

Cisco

Exam Questions 300-510

Implementing Cisco Service Provider Advanced Routing Solutions (SPRI)



NEW QUESTION 1

Refer to the exhibit. Which effect of this configuration is true?

- A. It sets the keepalive timer to 30 seconds and the hold timer to 240 seconds.
- B. It sets the keepalive timer to 30 milliseconds and the hold timer to 240 milliseconds
- C. It sets the hold timer to 30 milliseconds and the keepalive timer to 240 milliseconds
- D. It sets the hold timer to 30 seconds and the keepalive timer to 240 seconds

Answer: A

NEW QUESTION 2

```
RP/0/0/CPU0:XR1#show run

route-policy AGGRO
  if destination in (10.0.0.0/8 ge 8 le 25) then
    set community (10:825)
  endif
  if destination in (10.2.0.0/24) then
    drop
  endif
  if destination in (10.1.0.0/24) then
    suppress-route
  endif
end-policy
!
!
router bgp 1
  bgp router-id 192.168.0.7
  address-family ipv4 unicast
    aggregate-address 10.0.0.0/8 route-policy AGGRO
RP/0/0/CPU0:XR1#
```

Refer to the exhibit. A network operator is working to filter routes from being advertised that are covered under an aggregate announcement. The receiving router of the aggregate announcement block is still getting some of the more specific routes plus the aggregate. Which configuration change ensures that only the aggregate is announced now and in the future if other networks are to be added?

- A. Configure the summary-only keyword on the aggregate command
- B. Set each specific route in the AGGRO policy to drop instead of suppress-route
- C. Filter the routes on the receiving router
- D. Set each specific route in the AGGRO policy to remove instead of suppress-route

Answer: A

NEW QUESTION 3

A network consultant is troubleshooting IS-IS instances to identify why a routing domains is having communication problems between the two instances. Which description of the possible cause of issues in the routing domain is true?

- A. The same interface cannot be advertised in two different IS-IS instances
- B. The IS-IS "ISP" and "ISP2" instances are unrelated and unable to intercommunicate
- C. The configured IS-IS NSEL value is not allowing the routing systems to establish a neighborhood
- D. The interface mode ip router is-is command was not included in the script

Answer: A

NEW QUESTION 4

For which reason can two devices fail to establish an OSPF neighbor relationship?

- A. The two devices have different process IDs
- B. The two devices have different network types
- C. The two devices have different router IDs
- D. The two devices have the same area ID

Answer: B

NEW QUESTION 5

Refer to the exhibit. Which LSA type is indicated by this router output?

OSPF Router with ID (192.168.1.1) (Process ID 1)
Router Link States (Area 1234)
LS age: 691
Options: (No TOS-capability, DC)
LS Type: Router Links
Link State ID: 192.168.1.1

- A. type 3 LSA
- B. type 4 LSA
- C. type 1 LSA
- D. type 2 LSA

Answer: C

NEW QUESTION 6

Which statement about enabling segment routing for IGPs is true?

- A. Segment routing must first be enabled under then routing process and then globally
- B. Segment routing must first be enabled globally and then under the routing process
- C. Segment routing can be enabled only under the routing process
- D. Segment routing can be enabled only globally

Answer: B

NEW QUESTION 7

Refer to the exhibit. Router 1 is a core ABR in a Cisco Unified MPLS environment. All of the router 1 BGP peers are established, but traffic between customers is failing. Which BGP configuration must be added to the configuration?

- A. It must be configured for graceful restart
- B. It must be configured with a route reflector
- C. It must be configured with send labels
- D. It must be configured with PIC edge

Answer: C

NEW QUESTION 8

R1#sh ip int bri				
Interface	IP-Address	OK?	Method Status	Protocol
FastEthernet0/0	10.1.12.1	YES	manual up	up
FastEthernet0/1	10.1.13.1	YES	manual up	up
R1#sh run s router bgp				
!				
router bgp 123				
bgp log-neighbor-changes				
neighbor TEST peer-group				
neighbor TEST remote-as 2 alternate-as 3				
neighbor 10.1.12.2 peer-group TEST				
neighbor 10.1.13.3 peer-group TEST				
R2#sh ip int bri				
Interface	IP-Address	OK?	Method Status	Protocol
FastEthernet0/0	10.1.12.2	YES	manual up	up
R2#sh run s router bgp				
!				
router bgp 2				
bgp log-neighbor-changes				
neighbor 10.1.12.1 remote-as 123				
R3#sh ip int bri				
Interface	IP-Address	OK?	Method Status	Protocol
FastEthernet0/1	10.1.13.3	YES	manual up	up
R3#sh run s router bgp				
router bgp 3				
bgp log-neighbor-changes				
neighbor 10.1.13.1 remote-as 123				

Refer to the exhibit. R1 is directly connected to R2 and R3. R1 is in BGP AS 123, R2 is in BGP AS 2, and R3 is in BGP AS 3. Assume that there is no connectivity issue between R1, R2 and R1, R3. Which result between BGP peers R1, R2 and R1, R3 is true?

- A. The BGP session does not come up between R1 and R2 and between R1 and R3.
- B. The BGP session comes up between R1 and R2 and between R1 and R3.
- C. The BGP session comes up between R1 and R3, but not between R1 and R2.
- D. The BGP session comes up between R1 and R2, but not between R1 and R3.

Answer: B

NEW QUESTION 9

Which two conditions must be met before separate ISPs can provide interdomain multicast routing? (Choose two.)

- A. Each ISP must configure MSDP to connect its individual multicast administrative domain to the domains at other ISPs.
- B. Each ISP must dedicate a single router to handle multicast traffic between providers.
- C. Each ISP must replace its RP assignment with a global RP.
- D. Each ISP must configure its network to use PIM-DM.
- E. Each ISP must support intradomain multicast routing.

Answer: AE

NEW QUESTION 10

DRAG DROP

An engineer is troubleshooting end-to-end customer traffic across an MPLS VPN service provider network. Which tasks should the engineer use to solve the routing issues? Drag and drop the table types from the left onto the most useful troubleshooting tasks/router types on the right. (Not all options are used.)
 Select and Place:

- A. Mastered
- B. Not Mastered

Answer: A

NEW QUESTION 10

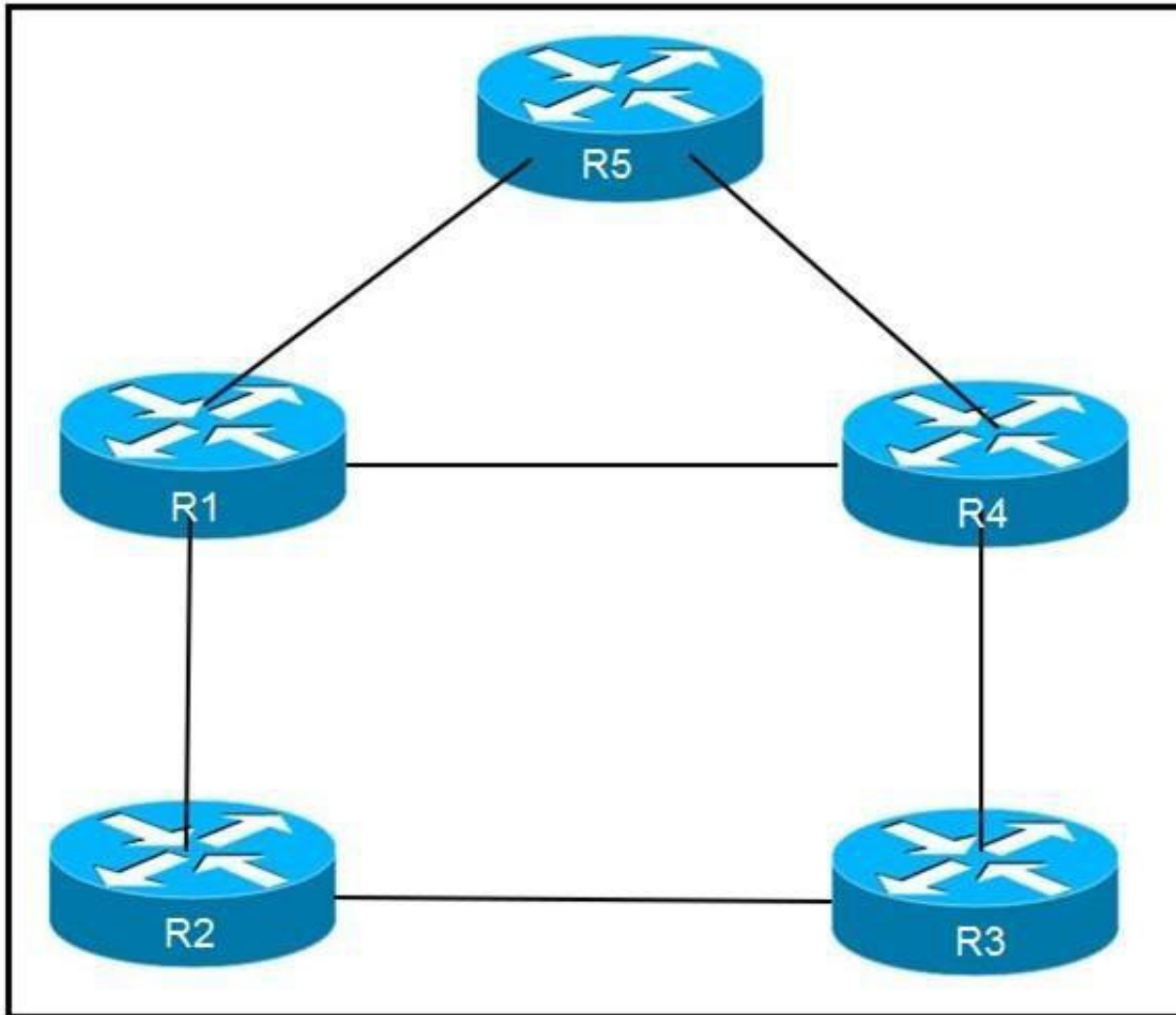
You have configured MSDP peering between two autonomous systems that pass traffic between two sites, but the peering has failed to come up. Which task do you perform to begin troubleshooting the problem?

- A. Verify that multicast has been disabled globally

- B. Verify that PIM-DM is configured on the source interface
- C. Verify that both source interfaces are reachable from both peers
- D. Verify that the two MSDP peers allow asymmetric routing

Answer: C

NEW QUESTION 11



Refer to the exhibit. An engineer is addressing an IS-IS design issue which is running within the topology. All links are running on FastEthernet, except the link between R5 and R4, which is Gigabit Ethernet. Which statement about the design is true?

- A. R4 prefer to reach R5 using R1 as the next hop
- B. All links have equal cost if the default metric is used
- C. R5 prefers to use R4 as the next hop for all routes
- D. R1 prefer to use R5 as the next hop to reach R4

Answer: B

NEW QUESTION 14

Router 1:

```

router bgp 65530
 address-family ipv4 unicast
  bgp additional-paths select all
  neighbor 192.168.1.1 additional-paths send
  neighbor 192.168.1.1 advertise additional-paths all
  
```

Refer to the exhibit. Which statement about this configuration is true?

- A. Router 1 sends and receives multiple best paths from neighbor 192.168.1.1
- B. Router 1 sends up to two paths to neighbor 192.168.1.1 for all routes
- C. Router 1 receives up to two paths from neighbor 192.168.1.1 for all routes in the same AS
- D. Router 1 receives only the best path from neighbor 192.168.1.1

Answer: A

NEW QUESTION 19

Refer to the exhibit. CE1 and CE2 cannot communicate through the service provider BGP peering is established between PE1 and PE2. IS-IS is the only routing protocol running in the service provider core. What step can be done to troubleshoot the issue?

- A. Switch the IGP's running in the core from IS-IS to OSPF to support a Cisco MPLS TE tunnel from PE1 to PE2.
- B. Configure BGP between CE and PE routers.
- C. Confirm that IS-IS is running with metric-style narrow.
- D. Verify the MPLS LSPs.

Answer: C

NEW QUESTION 22

Refer to the exhibit. Routers R1 and R2 cannot form a neighbor relationship, but the network is otherwise configured correctly and operating normally. Which two statements describe the problem? (Choose two.)

- A. The two routers are in the same area
- B. The two routers are in different subnets
- C. The two routers have password mismatch issues
- D. The two routers have the same network ID
- E. The two routers are in different areas

Answer: BE

NEW QUESTION 26

```
router bgp 65515
 neighbor 192.168.1.1 route-map ciscotest in
 neighbor 192.168.1.1 remote-as 65516

ip as-path access-list 1 permit _65517_

route-map ciscotest permit 10
 match as-path 1
 set local-preference 150
```

Refer to the exhibit. After troubleshooting BGP traffic steering issue, which action did the network operator take to achieve the correct effect of this configuration?

- A. Routes that have passed through AS 65517 have the local preference set to 150.
- B. Routes that have originated through AS 65517 have the local preference set to 150.
- C. Routes directly attached to AS 65517 have the local preference set to 150.
- D. Routes that have passed through AS 65517 have the local preference set to 150 and the traffic is denied.

Answer: A

NEW QUESTION 31

In a PIM-SM environment, which mechanism determines the traffic that a receiver receives?

- A. The receiver explicitly requests its desired traffic from the RP on the shared tree.
- B. The receiver explicitly requests traffic from a single source, which responds by forwarding all traffic.
- C. The RP on the shared tree floods traffic out of all PIM configured interfaces.
- D. The receiver explicitly requests traffic from each desired source, which responds by sending all traffic.

Answer: D

NEW QUESTION 36

Which two routing protocols have extensions capable of running SRv6? (Choose two.)

- A. OSPF
- B. BGP
- C. RIP
- D. IGRP
- E. EIGRP

Answer: AB

NEW QUESTION 41

Which two characteristics unique to SSM when compared to ASM are true? (Choose two.)

- A. It uses SPT switchover
- B. It uses (*,G) exclusively
- C. It uses IGMPv3
- D. It uses RP
- E. It uses (S,G) exclusively

Answer: CE

NEW QUESTION 42

Refer to the exhibit. Which attribute can router 1 alter so that only other iBGP peers prefer to use 192.168.4.2 as the next hop for route 192.168.3.0/24?

- A. MED
- B. local preference
- C. origin
- D. weight

Answer: A

NEW QUESTION 43

.....

Thank You for Trying Our Product

We offer two products:

1st - We have Practice Tests Software with Actual Exam Questions

2nd - Questions and Answers in PDF Format

300-510 Practice Exam Features:

- * 300-510 Questions and Answers Updated Frequently
- * 300-510 Practice Questions Verified by Expert Senior Certified Staff
- * 300-510 Most Realistic Questions that Guarantee you a Pass on Your First Try
- * 300-510 Practice Test Questions in Multiple Choice Formats and Updates for 1 Year

100% Actual & Verified — Instant Download, Please Click
[Order The 300-510 Practice Test Here](#)