



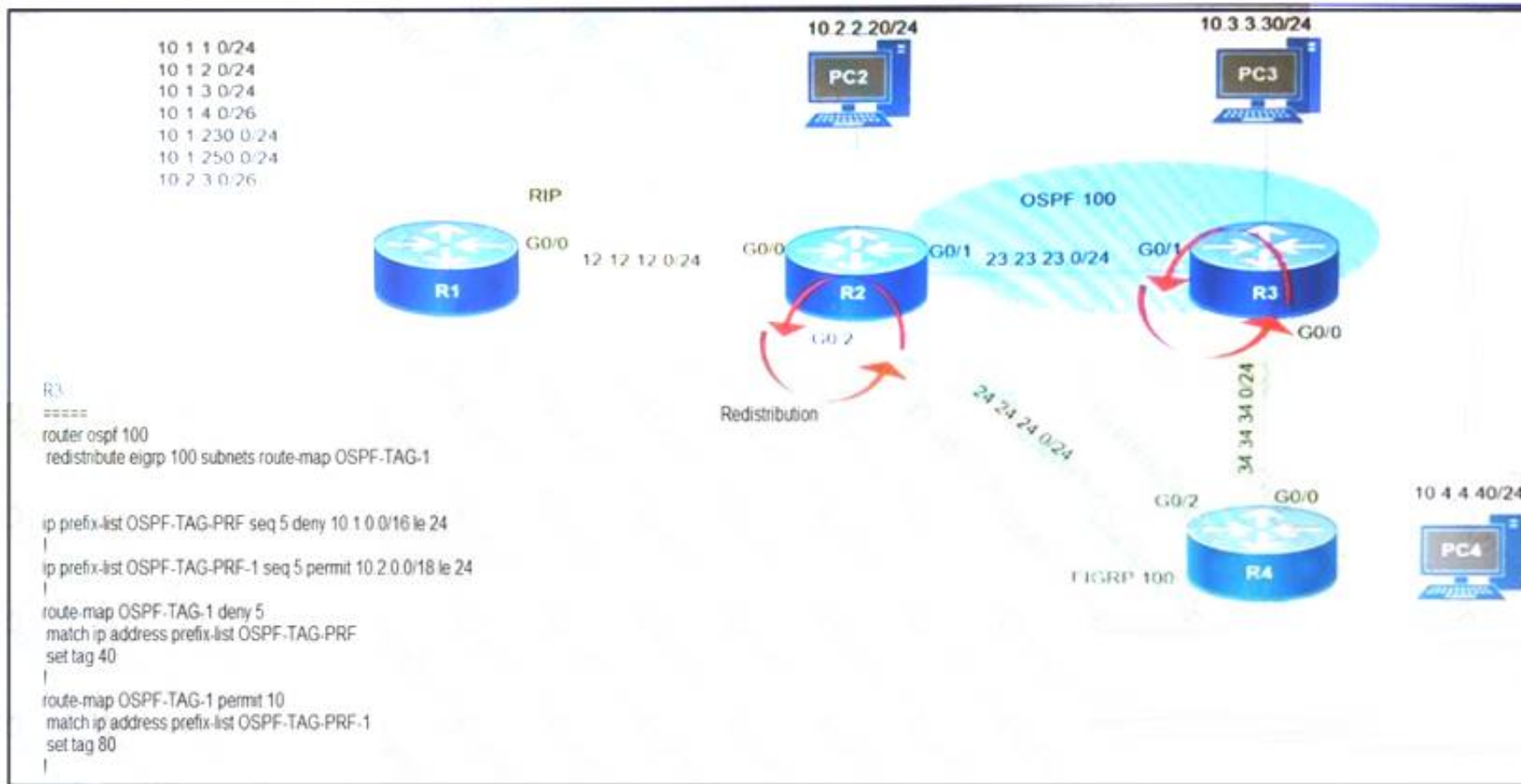
**Cisco**

## **Exam Questions 300-410**

Implementing Cisco Enterprise Advanced Routing and Services (ENARSI)

### NEW QUESTION 1

Refer to the exhibit.



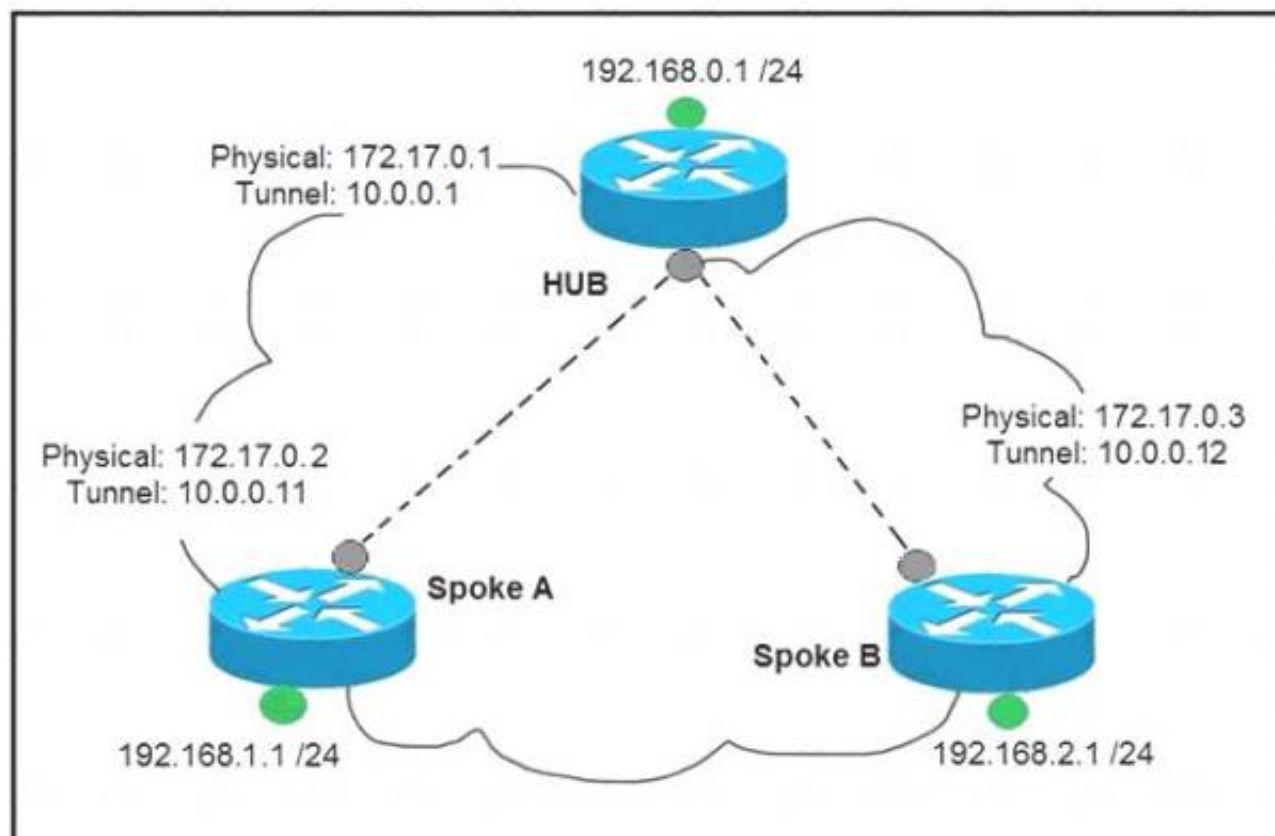
Which subnet is redistributed from EIGRP to OSPF routing protocols?

- A. 10.2.2.0/24
- B. 10.1.4.0/26
- C. 10.1.2.0/24
- D. 10.2.3.0/26

**Answer: A**

### NEW QUESTION 2

Refer to the exhibit.



Which interface configuration must be configured on the spoke A router to enable a dynamic DMVPN tunnel with the spoke B router?

- A. **interface Tunnel0**  
**description mGRE – DMVPN Tunnel**  
**ip address 10.0.0.11 255.255.255.0**  
**ip nhrp map multicast dynamic**  
**ip nhrp network-id 1**  
**tunnel source 10.0.0.1**  
**tunnel destination FastEthernet 0/0**  
**tunnel mode gre multipoint**
- B. **interface Tunnel0**  
**ip address 10.0.0.11 255.255.255.0**  
**ip nhrp network-id 1**  
**tunnel source FastEthernet 0/0**  
**tunnel mode gre multipoint**  
**ip nhrp nhs 10.0.0.1**  
**ip nhrp map 10.0.0.1 172.17.0.1**
- C. **interface Tunnel0**  
**ip address 10.1.0.11 255.255.255.0**  
**ip nhrp network-id 1**  
**tunnel source 1.1.1.10**  
**ip nhrp map 10.0.0.11 172.17.0.2**  
**tunnel mode gre**
- D. **interface Tunnel0**  
**ip address 10.0.0.11 255.255.255.0**  
**ip nhrp map multicast static**  
**ip nhrp network-id 1**  
**tunnel source 10.0.0.1**  
**tunnel mode gre multipoint**

- A. Option A  
B. Option B  
C. Option C  
D. Option D

**Answer:** A

### NEW QUESTION 3

Refer to the exhibit.

```
R1(config) # do show running-config | section line|username
username cisco secret 5 $1$yb/o$L3G5cXODxpYMSJ70PzEyo0
line con 0
  logging synchronous
line vty 0 4
  login local
  transport input telnet
R1(config) # logging console 7
R1(config) # do debug aaa authentication
R1(config) #
```

An administrator that is connected to the console does not see debug messages when remote users log in. Which action ensures that debug messages are displayed for remote logins?

- A. Enter the transport input ssh configuration command.  
B. Enter the terminal monitor exec command.  
C. Enter the logging console debugging configuration command.  
D. Enter the aaa new-model configuration command.

**Answer:** B

### NEW QUESTION 4

Refer to the exhibit.

```
* Jun 28 14:41:57: %BGP-5-ADJCHANGE: neighbor 192.168.2.2 Down User reset
* Jun 28 14:41:57: %BGP_SESSION-5-ADJCHANGE: neighbor 192.168.2.2 IPv4 Unicast
topology base removed from session User reset
* Jun 28 14:41:57: %BGP-5-ADJCHANGE: neighbor 192.168.2.2 Up
R1#show clock
*15:42:00.506 CET Fri Jun 28 2019
```

An engineer is troubleshooting BGP on a device but discovers that the clock on the device does not correspond to the time stamp of the log entries. Which action ensures consistency between the two times?

- A. Configure the service timestamps log uptime command in global configuration mode.
- B. Configure the logging clock synchronize command in global configuration mode.
- C. Configure the service timestamps log datetime localtime command in global configuration mode.
- D. Make sure that the clock on the device is synchronized with an NTP server.

**Answer: D**

#### NEW QUESTION 5

When provisioning a device in Cisco DNA Center, the engineer sees the error message "Cannot select the device. Not compatible with template". What is the reason for the error?

- A. The template has an incorrect configuration.
- B. The software version of the template is different from the software version of the device.
- C. The changes to the template were not committed.
- D. The tag that was used to filter the templates does not match the device tag.

**Answer: B**

#### NEW QUESTION 6

Which attribute eliminates LFAs that belong to protected paths in situations where links in a network are connected through a common fiber?

- A. shared risk link group-disjoint
- B. linecard-disjoint
- C. lowest-repair-path-metric
- D. interface-disjoint

**Answer: A**

#### NEW QUESTION 7

Which statement about route distinguishers in an MPLS network is true?

- A. Route distinguishers allow multiple instances of a routing table to coexist within the edge router.
- B. Route distinguishers are used for label bindings.
- C. Route distinguishers make a unique VPNv4 address across the MPLS network.
- D. Route distinguishers define which prefixes are imported and exported on the edge router.

**Answer: C**

#### NEW QUESTION 8

Drag and drop the addresses from the left onto the correct IPv6 filter purposes on the right.

permit ip 2001:d8b:800:200c::/117 2001:0DBB:800:2010::/64 eq 443	Permit NTP from this source 2001:0D8B:0800:200c::1f
permit ip 2001:D88:800:200C::e/126 2001:0DBB:800:2010::/64 eq 514	Permit syslog from this source 2001:0D88:0800:200c::1c
permit ip 2001:d8b:800:200c::800 /117 2001:0DBB:800:2010::/64 eq 80	Permit HTTP from this source 2001:0D8B:0800:200c::0fff
permit ip 2001:D8B:800:200C::c/126 2001:0DBB:800:2010::/64 eq 123	Permit HTTPS from this source 2001:0D8B:0800:200c::07ff

- A. Mastered
- B. Not Mastered

**Answer: A**



**Explanation:**

<pre>permit ip 2001:d8b:800:200c::/117 2001:0DBB:800:2010::/64 eq 443</pre>	<pre>permit ip 2001:D8B:800:200C::c/126 2001:0DBB:800:2010::/64 eq 123</pre>
<pre>permit ip 2001:D88:800:200C::e/126 2001:0DBB:800:2010::/64 eq 514</pre>	<pre>permit ip 2001:D88:800:200C::e/126 2001:0DBB:800:2010::/64 eq 514</pre>
<pre>permit ip 2001:d8b:800:200c::800 /117 2001:0DBB:800:2010::/64 eq 80</pre>	<pre>permit ip 2001:d8b:800:200c::800 /117 2001:0DBB:800:2010::/64 eq 80</pre>
<pre>permit ip 2001:D8B:800:200C::c/126 2001:0DBB:800:2010::/64 eq 123</pre>	<pre>permit ip 2001:d8b:800:200c::/117 2001:0DBB:800:2010::/64 eq 443</pre>

**NEW QUESTION 9**

While troubleshooting connectivity issues to a router, these details are noticed:

- Standard pings to all router interfaces, including loopbacks, are successful.
- Data traffic is unaffected.
- SNMP connectivity is intermittent.
- SSH is either slow or disconnects frequently.

Which command must be configured first to troubleshoot this issue?

- A. show policy-map control-plane
- B. show policy-map
- C. show interface | inc drop
- D. show ip route

**Answer: A**

**NEW QUESTION 10**

Refer to the exhibit.

```
snmp-server community ciscotest1
snmp-server host 192.168.1.128 ciscotest
snmp-sever enable traps bgp
```

Network operations cannot read or write any configuration on the device with this configuration from the operations subnet. Which two configurations fix the issue? (Choose two.)

- A. Configure SNMP rw permission in addition to community ciscotest.
- B. Modify access list 1 and allow operations subnet in the access list.
- C. Modify access list 1 and allow SNMP in the access list.
- D. Configure SNMP rw permission in addition to version 1.
- E. Configure SNMP rw permission in addition to community ciscotest 1.

**Answer: AB**

**NEW QUESTION 10**

Which method changes the forwarding decision that a router makes without first changing the routing table or influencing the IP data plane?

- A. nonbroadcast multiaccess
- B. packet switching
- C. policy-based routing
- D. forwarding information base

**Answer: C**

**NEW QUESTION 12**

Refer to the exhibit.

R200#show ip bgp summary

BGP router identifier 10.1.1.1, local AS number 65000

BGP table version is 26, main routing table version 26

1 network entries using 132 bytes of memory

1 path entries using 52 bytes of memory

2/1 BGP path/bestpath attribute entries using 296 bytes of memory

0 BGP route-map cache entries using 0 bytes of memory

0 BGP filter-list cache entries using 0 bytes of memory

Bitfield cache entries: current 1 (at peak 2) using 28 bytes of memory

BGP using 508 total bytes of memory

BGP activity 24/23 prefixes, 24/23 paths, scan interval 60 secs

Neighbor	V	AS	MsgRcvd	MsgSent	TblVer	InQ	OutQ	Up/Down	State/PfxRcd
192.0.2.2	4	65100	20335	20329	0	0	0	00:02:04	Idle (PfxCt)

R200#

In which circumstance does the BGP neighbor remain in the idle condition?

- A. if prefixes are not received from the BGP peer
- B. if prefixes reach the maximum limit
- C. if a prefix list is applied on the inbound direction
- D. if prefixes exceed the maximum limit

**Answer:** D

**NEW QUESTION 16**

.....

## About ExamBible

*[Your Partner of IT Exam](#)*

## Found in 1998

ExamBible is a company specialized on providing high quality IT exam practice study materials, especially Cisco CCNA, CCDA, CCNP, CCIE, Checkpoint CCSE, CompTIA A+, Network+ certification practice exams and so on. We guarantee that the candidates will not only pass any IT exam at the first attempt but also get profound understanding about the certificates they have got. There are so many alike companies in this industry, however, ExamBible has its unique advantages that other companies could not achieve.

## Our Advances

### \* 99.9% Uptime

All examinations will be up to date.

### \* 24/7 Quality Support

We will provide service round the clock.

### \* 100% Pass Rate

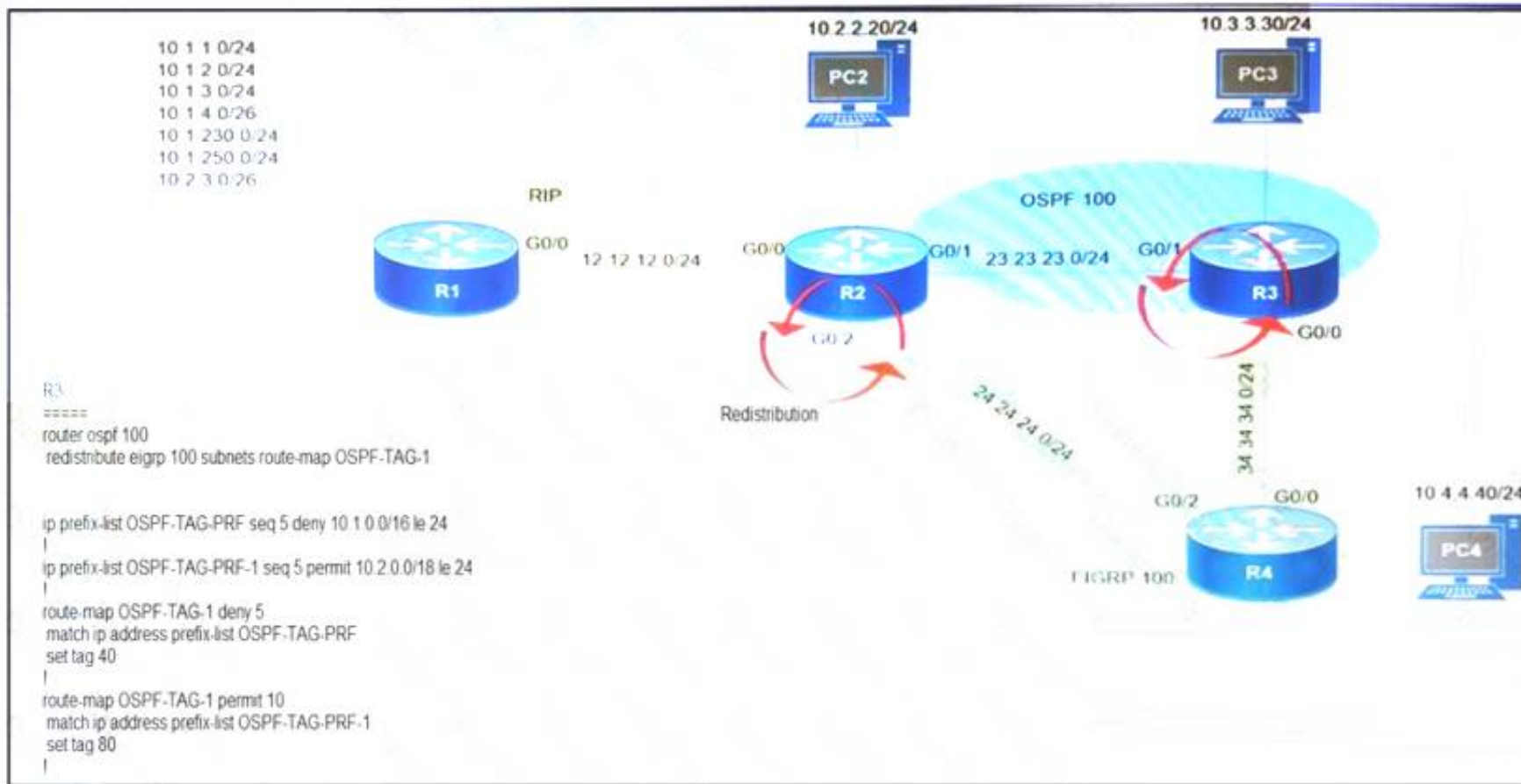
Our guarantee that you will pass the exam.

### \* Unique Gurantee

If you do not pass the exam at the first time, we will not only arrange FULL REFUND for you, but also provide you another exam of your claim, ABSOLUTELY FREE!

### NEW QUESTION 1

Refer to the exhibit.



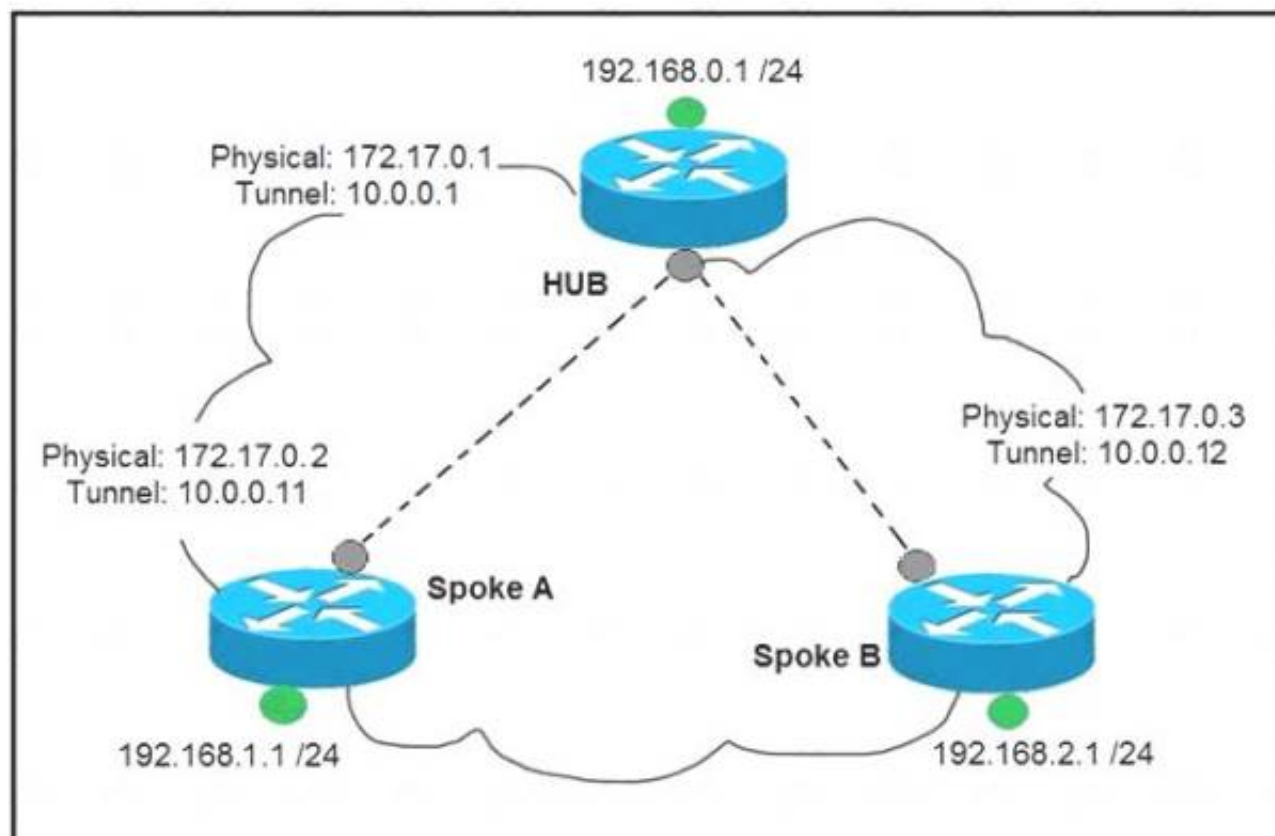
Which subnet is redistributed from EIGRP to OSPF routing protocols?

- A. 10.2.2.0/24
- B. 10.1.4.0/26
- C. 10.1.2.0/24
- D. 10.2.3.0/26

**Answer: A**

### NEW QUESTION 2

Refer to the exhibit.



Which interface configuration must be configured on the spoke A router to enable a dynamic DMVPN tunnel with the spoke B router?



- A. **interface Tunnel0**  
**description mGRE – DMVPN Tunnel**  
**ip address 10.0.0.11 255.255.255.0**  
**ip nhrp map multicast dynamic**  
**ip nhrp network-id 1**  
**tunnel source 10.0.0.1**  
**tunnel destination FastEthernet 0/0**  
**tunnel mode gre multipoint**
- B. **interface Tunnel0**  
**ip address 10.0.0.11 255.255.255.0**  
**ip nhrp network-id 1**  
**tunnel source FastEthernet 0/0**  
**tunnel mode gre multipoint**  
**ip nhrp nhs 10.0.0.1**  
**ip nhrp map 10.0.0.1 172.17.0.1**
- C. **interface Tunnel0**  
**ip address 10.1.0.11 255.255.255.0**  
**ip nhrp network-id 1**  
**tunnel source 1.1.1.10**  
**ip nhrp map 10.0.0.11 172.17.0.2**  
**tunnel mode gre**
- D. **interface Tunnel0**  
**ip address 10.0.0.11 255.255.255.0**  
**ip nhrp map multicast static**  
**ip nhrp network-id 1**  
**tunnel source 10.0.0.1**  
**tunnel mode gre multipoint**

- A. Option A  
B. Option B  
C. Option C  
D. Option D

**Answer:** A

### NEW QUESTION 3

Refer to the exhibit.

```
R1(config) # do show running-config | section line|username
username cisco secret 5 $1$yb/o$L3G5cXODxpYMSJ70PzEyo0
line con 0
  logging synchronous
line vty 0 4
  login local
  transport input telnet
R1(config) # logging console 7
R1(config) # do debug aaa authentication
R1(config) #
```

An administrator that is connected to the console does not see debug messages when remote users log in. Which action ensures that debug messages are displayed for remote logins?

- A. Enter the transport input ssh configuration command.  
B. Enter the terminal monitor exec command.  
C. Enter the logging console debugging configuration command.  
D. Enter the aaa new-model configuration command.

**Answer:** B

### NEW QUESTION 4

Refer to the exhibit.

```
* Jun 28 14:41:57: %BGP-5-ADJCHANGE: neighbor 192.168.2.2 Down User reset
* Jun 28 14:41:57: %BGP_SESSION-5-ADJCHANGE: neighbor 192.168.2.2 IPv4 Unicast
topology base removed from session User reset
* Jun 28 14:41:57: %BGP-5-ADJCHANGE: neighbor 192.168.2.2 Up
R1#show clock
*15:42:00.506 CET Fri Jun 28 2019
```

An engineer is troubleshooting BGP on a device but discovers that the clock on the device does not correspond to the time stamp of the log entries. Which action ensures consistency between the two times?

- A. Configure the service timestamps log uptime command in global configuration mode.
- B. Configure the logging clock synchronize command in global configuration mode.
- C. Configure the service timestamps log datetime localtime command in global configuration mode.
- D. Make sure that the clock on the device is synchronized with an NTP server.

**Answer: D**

#### NEW QUESTION 5

When provisioning a device in Cisco DNA Center, the engineer sees the error message "Cannot select the device. Not compatible with template". What is the reason for the error?

- A. The template has an incorrect configuration.
- B. The software version of the template is different from the software version of the device.
- C. The changes to the template were not committed.
- D. The tag that was used to filter the templates does not match the device tag.

**Answer: B**

#### NEW QUESTION 6

Which attribute eliminates LFAs that belong to protected paths in situations where links in a network are connected through a common fiber?

- A. shared risk link group-disjoint
- B. linecard-disjoint
- C. lowest-repair-path-metric
- D. interface-disjoint

**Answer: A**

#### NEW QUESTION 7

Which statement about route distinguishers in an MPLS network is true?

- A. Route distinguishers allow multiple instances of a routing table to coexist within the edge router.
- B. Route distinguishers are used for label bindings.
- C. Route distinguishers make a unique VPNv4 address across the MPLS network.
- D. Route distinguishers define which prefixes are imported and exported on the edge router.

**Answer: C**

#### NEW QUESTION 8

Drag and drop the addresses from the left onto the correct IPv6 filter purposes on the right.

permit ip 2001:d8b:800:200c::/117 2001:0DBB:800:2010::/64 eq 443	Permit NTP from this source 2001:0D8B:0800:200c::1f
permit ip 2001:D88:800:200C::e/126 2001:0DBB:800:2010::/64 eq 514	Permit syslog from this source 2001:0D88:0800:200c::1c
permit ip 2001:d8b:800:200c::800 /117 2001:0DBB:800:2010::/64 eq 80	Permit HTTP from this source 2001:0D8B:0800:200c::0fff
permit ip 2001:D8B:800:200C::c/126 2001:0DBB:800:2010::/64 eq 123	Permit HTTPS from this source 2001:0D8B:0800:200c::07ff

- A. Mastered
- B. Not Mastered

**Answer: A**



**Explanation:**

<pre>permit ip 2001:d8b:800:200c::/117 2001:0DBB:800:2010::/64 eq 443</pre>	<pre>permit ip 2001:D8B:800:200C::c/126 2001:0DBB:800:2010::/64 eq 123</pre>
<pre>permit ip 2001:D88:800:200C::e/126 2001:0DBB:800:2010::/64 eq 514</pre>	<pre>permit ip 2001:D88:800:200C::e/126 2001:0DBB:800:2010::/64 eq 514</pre>
<pre>permit ip 2001:d8b:800:200c::800 /117 2001:0DBB:800:2010::/64 eq 80</pre>	<pre>permit ip 2001:d8b:800:200c::800 /117 2001:0DBB:800:2010::/64 eq 80</pre>
<pre>permit ip 2001:D8B:800:200C::c/126 2001:0DBB:800:2010::/64 eq 123</pre>	<pre>permit ip 2001:d8b:800:200c::/117 2001:0DBB:800:2010::/64 eq 443</pre>

**NEW QUESTION 9**

While troubleshooting connectivity issues to a router, these details are noticed:

- Standard pings to all router interfaces, including loopbacks, are successful.
- Data traffic is unaffected.
- SNMP connectivity is intermittent.
- SSH is either slow or disconnects frequently.

Which command must be configured first to troubleshoot this issue?

- A. show policy-map control-plane
- B. show policy-map
- C. show interface | inc drop
- D. show ip route

**Answer:** A

**NEW QUESTION 10**

Refer to the exhibit.

```
snmp-server community ciscotest1
snmp-server host 192.168.1.128 ciscotest
snmp-sever enable traps bgp
```

Network operations cannot read or write any configuration on the device with this configuration from the operations subnet. Which two configurations fix the issue? (Choose two.)

- A. Configure SNMP rw permission in addition to community ciscotest.
- B. Modify access list 1 and allow operations subnet in the access list.
- C. Modify access list 1 and allow SNMP in the access list.
- D. Configure SNMP rw permission in addition to version 1.
- E. Configure SNMP rw permission in addition to community ciscotest 1.

**Answer:** AB

**NEW QUESTION 10**

Which method changes the forwarding decision that a router makes without first changing the routing table or influencing the IP data plane?

- A. nonbroadcast multiaccess
- B. packet switching
- C. policy-based routing
- D. forwarding information base

**Answer:** C

**NEW QUESTION 12**

Refer to the exhibit.

R200#show ip bgp summary

BGP router identifier 10.1.1.1, local AS number 65000

BGP table version is 26, main routing table version 26

1 network entries using 132 bytes of memory

1 path entries using 52 bytes of memory

2/1 BGP path/bestpath attribute entries using 296 bytes of memory

0 BGP route-map cache entries using 0 bytes of memory

0 BGP filter-list cache entries using 0 bytes of memory

Bitfield cache entries: current 1 (at peak 2) using 28 bytes of memory

BGP using 508 total bytes of memory

BGP activity 24/23 prefixes, 24/23 paths, scan interval 60 secs

Neighbor	V	AS	MsgRcvd	MsgSent	TblVer	InQ	OutQ	Up/Down	State/PfxRcd
192.0.2.2	4	65100	20335	20329	0	0	0	00:02:04	Idle (PfxCt)

R200#

In which circumstance does the BGP neighbor remain in the idle condition?

- A. if prefixes are not received from the BGP peer
- B. if prefixes reach the maximum limit
- C. if a prefix list is applied on the inbound direction
- D. if prefixes exceed the maximum limit

**Answer:** D

**NEW QUESTION 16**

.....



## Relate Links

**100% Pass Your 300-410 Exam with Examible Prep Materials**

<https://www.exambible.com/300-410-exam/>

## Contact us

We are proud of our high-quality customer service, which serves you around the clock 24/7.

Viste - <https://www.exambible.com/>