



Microsoft

Exam Questions mb-300

Microsoft Dynamics 365 Unified Operations Core

NEW QUESTION 1

- (Exam Topic 1)
You need to configure the system for account representatives.
Which two actions should you perform? Each correct answer presents a partial solution.
NOTE: Each correct selection is worth one point.

- A. Recreate the job alert as a change-based alert.
- B. Enable change-based alerts.
- C. Increase the batch job running frequency.
- D. Specify the batch server for the alert notifications job.

Answer: AB

NEW QUESTION 2

- (Exam Topic 1)
You need to configure check printing for Munson's.
Which four actions should you perform in sequence? To answer, move the appropriate actions from the list of actions to the answer area and arrange them in the correct order.

Actions

Install the Document Routing Agent on the client machines where users will be printing the checks.

Navigate to the legal entity and enable the printer.

Select the legal entities for the printer to be available.

Discover and add the check printer from the Document Routing Agent.

Enter the Dynamics 365 Finance and Operations configurations in the Document Routing Agent.

Discover and add the check printer to the system from Dynamics 365 Finance and Operations.

Install the Document Routing Agent on the corporate print server.

Register the Document Routing Agent with Dynamics 365 Finance and Operations.

Answer Area

- A. Mastered
- B. Not Mastered

Answer: A

Explanation:
Reference:
<https://docs.microsoft.com/en-us/dynamics365/unified-operations/dev-itpro/analytics/install-document-routing-a>

NEW QUESTION 3

- (Exam Topic 1)
You need to connect the Excel instance to the Relecloud production instance. What should you do?

- A. Set the server URL to Microsoft.Dynamics.Platform.Integration.Office.UrlViewerApplet.
- B. Set the server URL to <https://relecloud-prod.operations.dynamics.com>.
- C. Set the App Correlation ID to <https://relecloud-prod.operations.dynamics.com>.
- D. Set the App Correlation ID to the App Id in the Dynamics 365 Office App Parameters.

Answer: B

Explanation:
Reference:
<https://docs.microsoft.com/en-us/dynamics365/unified-operations/dev-itpro/office-integration/use-excel-add-in>

NEW QUESTION 4

- (Exam Topic 1)

You need to determine why the sales associate is not able to see Munson’s in the search results. What is the cause of the issue?

- A. The search criteria is searching for only names that are exactly ‘pickles’.
- B. The search criteria is only able to search by the shortened search name of the customer.
- C. The search criteria is searching for all customer names that start with ‘pickles’.
- D. The search criteria is case sensitive.

Answer: C

Explanation:

Reference:

<https://docs.microsoft.com/en-us/dynamics365/customer-engagement/basics/search-records>

NEW QUESTION 5

- (Exam Topic 2)

You are a Dynamics 365 for Finance and Operations system administrator.

Users have been creating advanced queries for filter data on forms. They want to be able to save the filter data for later use and access those views when they log in.

You need to instruct them in how to do this.

Which four actions should end users perform in sequence? To answer, move the appropriate actions from the list of actions to the answer area and arrange them in the correct order.

Actions

Select the saved query.

Click Save as filter.

Click Configure.

Filter the data in the grid via the advanced filter.

Right-click and select Personalize this form.

Click Options, and then select Add to workspace.

Select the workspace and presentation.

Add the All Customers form to favorites.

>

<

Answer Area

↑

↓

- A. Mastered
- B. Not Mastered

Answer: A

Explanation:

Actions	Answer Area
Select the saved query.	Add the All Customers form to favorites.
Click Save as filter.	
Click Configure.	Click Configure.
Filter the data in the grid via the advanced filter.	
Right-click and select Personalize this form.	Select the saved query.
Click Options, and then select Add to workspace.	
Select the workspace and presentation.	Click Options, and then select Add to workspace.
Add the All Customers form to favorites.	

NEW QUESTION 6

- (Exam Topic 2)

You are the project owner in a Lifecycle Services (LCS) project to deploy a Dynamics 365 for Finance and Operations environment.

The system must be configured to enable testers to record processes that become business processes and test plans.

You need to configure the system to generate User Acceptance Testing (UAT) test plans.

In which order should you perform the actions? To answer, move all actions from the list of actions to the answer area and arrange them in the correct order.

Actions	Answer Area
Create business process libraries in the LCS project.	
Enable Azure DevOps sync.	
Configure Azure DevOps for the LCS project.	
Configure system administrator help parameters to the LCS project.	
Enable Sync test cases.	

- A. Mastered
- B. Not Mastered

Answer: A

Explanation:

Actions	Answer Area
Create business process libraries in the LCS project.	Create business process libraries in the LCS project.
Enable Azure DevOps sync.	
Configure Azure DevOps for the LCS project.	Configure Azure DevOps for the LCS project.
Configure system administrator help parameters to the LCS project.	Configure system administrator help parameters to the LCS project.
Enable Sync test cases.	Enable Azure DevOps sync.
	Enable Sync test cases.

NEW QUESTION 7

- (Exam Topic 2)

Note: This question is part of a series of questions that present the same scenario. Each question in the series contains a unique solution that might meet the stated goals. Some question sets might have more than one correct solution, while others might not have a correct solution.

After you answer a question in this section, you will NOT be able to return to it. As a result, these questions will not appear in the review screen.

You are a Dynamics 365 for Finance and Operations security administrator.

When testing security setups, users report that certain roles are gaining access to sensitive information via a form in the system.

You must investigate which user roles have what visibility and access level to system objects, and then send a report to the implementation team to address security compliance concerns.

You need to report the information from the system. Solution: Generate the Security role access report. Does the solution meet the goal?

A. Yes

B. No

Answer: A

NEW QUESTION 8

- (Exam Topic 2)

You are a Dynamics 365 for Finance and Operations system administrator. You have production and testing environments. You move the workflow from the testing environment to the production environment.

The workflow in the production environment is stuck in a wait state.

You need to resolve the issue with the workflow in the production environment. What should you do?

A. Set the workflow batch job to critical

B. Set the workflow messaging batch job group

C. Grant the user workflow permissions

D. Set the workflow execution account in the workflow parameters

Answer: D

NEW QUESTION 9

- (Exam Topic 2)

You plan the migration from Dynamics AX 2009 to a Dynamics 365 for Finance and Operations environment. You will be moving data.

You need to create a data package from a group of entities in Dynamics AX 2009. What should you use?

A. Upgrade analyzer

B. Code upgrade estimation tools

C. Dynamics AX 2009 Data migration tool (DMT)

D. Data Import/Export Framework (DIXF)

Answer: D

Explanation:

References:

<https://docs.microsoft.com/en-us/dynamics365/unified-operations/dev-itpro/migration-upgrade/ax2009-upgrade-export-package>

NEW QUESTION 10

- (Exam Topic 2)

A company implements Dynamics 365 for Finance and Operations.

You have a requirement that the component data for address structure in the system be available in Portuguese (Brazil).

You need to provide address and contact information purpose with translation. What should you do?

A. Under Organization administration, on the Global addresses tab, enter the appropriate translation value in the translations form

B. In User options, set the language preference to Portuguese pt-BR and enter addresses for customers and vendors

C. Upload files to Dynamics 365 Translation Services (DTS) for conversion

D. Apply return from Dynamics 365 Translation Services (DTS) to the system by submitting a support ticket

Answer: A

NEW QUESTION 10

- (Exam Topic 2)

You plan the migration from a Dynamics AX 2012 to a Dynamics 365 for Finance and Operations environment.

You are tasked with overseeing and planning a cutover to guarantee a smooth experience for end users during the cutover. You perform a basic data upgrade validation.

You need to perform a cutover.

Which three tasks must you perform? Each correct answer presents part of the solution. NOTE: Each correct selection is worth one point.

A. Perform a smoke test.

B. Copy the upgraded database from the sandbox environment into the production environment.

C. Complete application setup tasks.

D. Ensure that Synchronous transfer mode is enabled

E. Enable the Microsoft Power BI AppSource content packs for Cost management, Financial performance, and Retail channel performance.

Answer: BCE

NEW QUESTION 15

- (Exam Topic 2)

You are a Dynamics 365 for Finance and Operations system administrator.

The expense department relies heavily on properly operating workflows. If there is a failure in the workflow, the issue needs to get resolved quickly. You need to make sure that the system actively tracks the status, so the support team can monitor and take actions against any failures. What should you do? Each correct answer presents a complete solution.
NOTE: Each correct selection is worth one point.

- A. Set the monitoring category of the Workflow message processing batch job to Workflow.
- B. Set the critical job flag of the Workflow message processing batch job to True.
- C. Set the Ignore task failure flag of the Workflow message processing batch job to False.
- D. Set the batch job named Workflow message processing to send an email when the status of the batch job is Error.
- E. Set the priority field of the Workflow message processing batch job to 1.

Answer: BCD

NEW QUESTION 20

- (Exam Topic 2)

A company implements Dynamics 365 for Finance and Operations. It sets up and configures the system to support reporting requirements using Microsoft Power BI.

The customer service manager wants to create reports in Power BI for analyzing customer order patterns, order fulfillment metrics, customer satisfaction KPIs, and customer service representative goal metrics. These reports compare aggregated information across multiple demographic regions and business lines for current trends against historic information.

The manager would like to use the reports to make individual team performance more visible to the managerial and executive teams. Since reports will be used by those teams as well as mobile users, the manager would like the report response to reflect the latest data without requiring the user to wait.

You need to determine which tool or functionality best fits the scenario.

Which feature or functionality should you use? To answer, select the appropriate feature or functionality in the dialog box in the answer area.

NOTE: Each correct selection is worth one point

Answer Area

Scenario	Feature or functionality
Stage the aggregate data for use by the reports.	Dynamics 365 system administration settings Power BI desktop client Lifecycle Services
Set the data source to use DirectQuery.	Dynamics 365 system administration settings Power BI desktop client Lifecycle Services
Publish the new reports to the production environment.	Dynamics 365 system administration settings Power BI desktop client Lifecycle Services
Configure the data refresh rate for periodic updating.	Dynamics 365 system administration settings Power BI desktop client Lifecycle Services

- A. Mastered
- B. Not Mastered

Answer: A

Explanation:

Answer Area

Scenario	Feature or functionality
Stage the aggregate data for use by the reports.	Dynamics 365 system administration settings Power BI desktop client Lifecycle Services
Set the data source to use DirectQuery.	Dynamics 365 system administration settings Power BI desktop client Lifecycle Services
Publish the new reports to the production environment.	Dynamics 365 system administration settings Power BI desktop client Lifecycle Services
Configure the data refresh rate for periodic updating.	Dynamics 365 system administration settings Power BI desktop client Lifecycle Services

NEW QUESTION 25

- (Exam Topic 2)

You are responsible for automation efforts in a Dynamics 365 for Finance and Operations environment. You are running into performance issues on a specific Application Object Server (AOS) that is over-used. You need to alter your batch processing of high-demand items to have affinity to a new AOS server. What batch processing component should you change?

- A. Batch task
- B. Batch group
- C. Batch periods
- D. Batch job

Answer: A

NEW QUESTION 27

- (Exam Topic 2)

You set up security roles for the users in a company. You must use standard security roles when possible. You need to identify the standard security roles. Which of the following can you assign to a user as a standard security role?

- A. Leasing manager
- B. System engineer
- C. Business development manager
- D. Waterspider

Answer: D

NEW QUESTION 32

- (Exam Topic 2)

You are a systems administrator for a Dynamics 365 for Finance and Operations environment.

You must notify the person responsible for deliveries that production could be delayed if deliveries are postponed.

You need to configure the alert.

What object should you configure the alert on?

- A. Inventory control
- B. Inventory location
- C. Purchase order
- D. Product

Answer: C

NEW QUESTION 36

- (Exam Topic 2)

You are a Dynamics 365 for Finance and Operations system administrator.

You manage a system that imports a large volume of sales orders from multiple systems daily. The system encounters a performance problem due to the amount of data.

You need to improve performance for the import. What should you do?

- A. Create an ODBC-type source data format and import directly from the database.
- B. Enable data import in recurrence.
- C. Configure entity execution parameters to make the data import multi-threaded.
- D. Enable change for the data entities.

Answer: C

NEW QUESTION 37

- (Exam Topic 2)

You are a Dynamics 365 for Finance and Operations implementation consultant. You plan to use automated regression testing in a company's environment, as the system will be updated frequently until automatic updates can be applied. You need to identify when and what key business object should be used during the implementation. Which business objects should you use? To answer, drag the appropriate objects to the correct component actions. Each object may be used once, more than once, or not at all. You may need to drag the split bar between panes or scroll to view content. NOTE: Each correct selection is worth one point.

1234

Objects

Test scripts

Business requirements

Answer Area

Component actions

Generate from the analysis meetings

Use for regression testing

Generate use cases

Use in a gap analysis process

Object

Object

Object

Object

Object

- A. Mastered
- B. Not Mastered

Answer: A

Explanation:

1234

Objects

Test scripts

Business requirements

Answer Area

Component actions

Generate from the analysis meetings

Use for regression testing

Generate use cases

Use in a gap analysis process

Object

Test scripts

Test scripts

Business requirements

Business requirements

NEW QUESTION 42

- (Exam Topic 2)

You are tasked with setting up Case management in the Dynamics 365 for Finance and Operations deployment for your organization. Your organization must use cases to track defect and enhancement reports for products, so that engineers can improve products over time. Only appropriate employees within the organization should have access to cases and related information.

- * Call center employees create thousands of service cases and ensure that the proper resources are allocated for each service.
- * Service department employees fix cases created by the call center and create cases for defects and enhancement suggestions when they identify them.
- * Engineers review the cases from the service department while planning and designing the next version. You need to configure the tool to enable tracking of service cases and product defects and enhancements.

Which Case management settings should you choose for each category or categories? To answer, select the appropriate options in the answer area. NOTE: Each correct selection is worth one point.

Option

Value

Category to use.

General and Production

Service and Product change

Service department in which employees create cases.

General

Production

Service

Product change

Call center in which employees create cases.

General

Production

Service

Product change

- A. Mastered
- B. Not Mastered

Answer: A

Guaranteed success with Our exam guides

visit - https://www.certshared.com

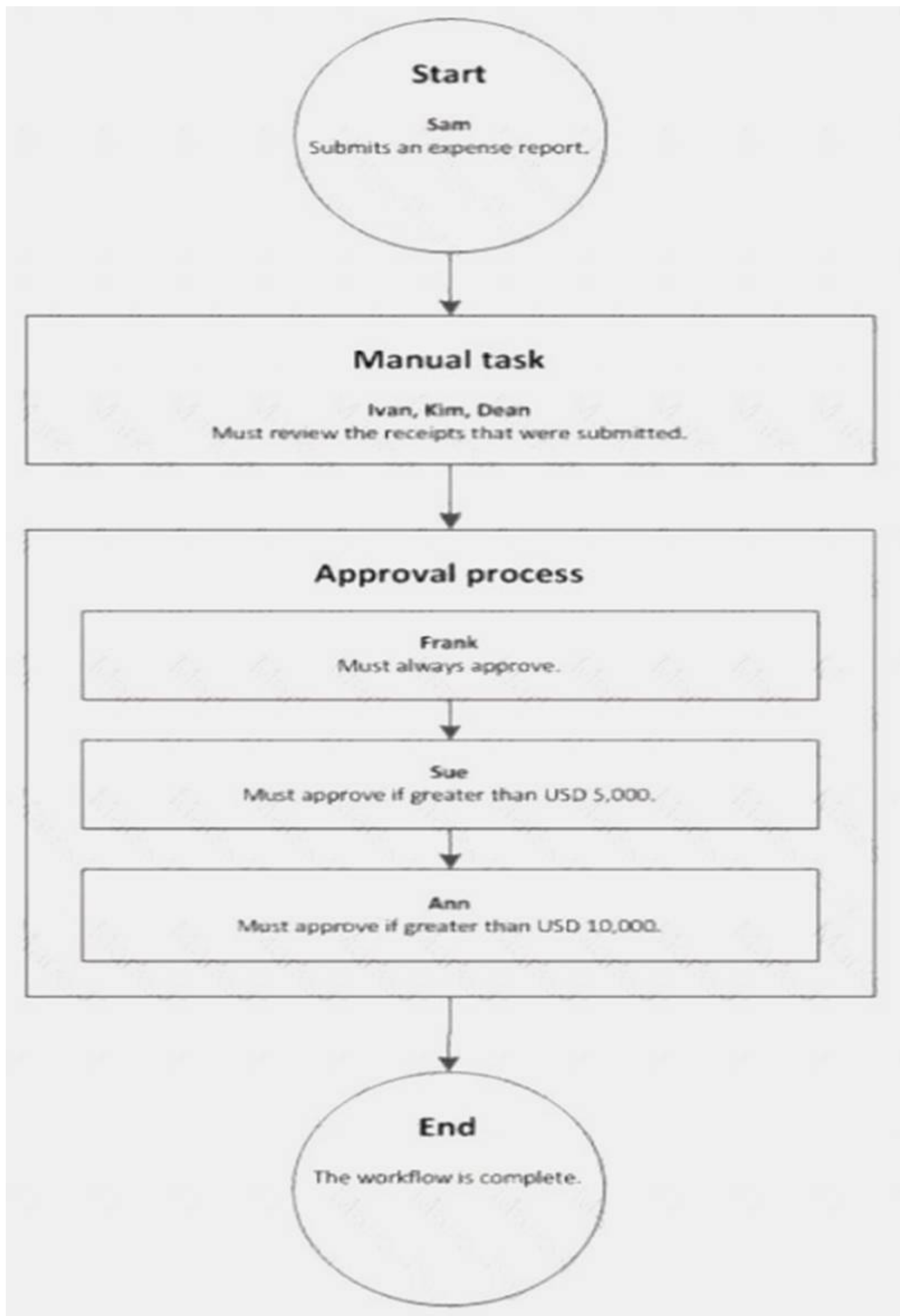
Explanation:

	Option	Value
Category to use.		<div>General and Production Service and Product change</div>
Service department in which employees create cases.		<div>General Production Service Product change</div>
Call center in which employees create cases.		<div>General Production Service Product change</div>

NEW QUESTION 47

- (Exam Topic 2)

A company sets up a workflow for expense reports. An employee named Sam submits an expense report totaling USD 7,000 to go through the workflow.



Use the drop-down menus to select the answer choice that answers each question based on the information presented in the graphic.

NOTE: Each correct selection is worth one point.

Questions	Answer choice
What statement about the workflow is correct?	Ann can reject the expense report. Ivan, Kim, and Dean must all complete the manual task. The workflow ends after Sue approves the expense report. The expense report will go through Frank, Sue, and Ann for approval.
What type of workflow is this?	Workflow with roles Workflow with a manual decision Workflow with multiple users in a task Workflow with a line-item workflow element

- A. Mastered
- B. Not Mastered

Answer: A

Explanation:

Reference:

<https://docs.microsoft.com/en-us/dynamicsax-2012/appuser-itpro/workflow-with-multiple-users-in-a-task>

NEW QUESTION 51

- (Exam Topic 2)

You set up Dynamics 365 for Finance and Operations. Your organization will use email with the application. You need to ensure that email will be sent using typical secure settings. What setting must be set up as specified?

- A. Specify if SSL is required is selected.
- B. Information rights management is enabled.
- C. In-place hold and Litigation hold are enabled.
- D. In-place eDiscovery is enabled.

Answer: A

NEW QUESTION 55

- (Exam Topic 2)

You are a Dynamics 365 for Finance and Operations system administrator. The finance department is experiencing electronic reporting submittal issues. You must use all available sources to troubleshoot those issues. You need to identify potential hotfixes. Which four actions should you perform in sequence? To answer, move the appropriate actions from the list of actions to the answer area and arrange them in the correct order.

Actions

Log in to Lifecycle Services (LCS).

Use the Issue search tile.

Select a project to work in.

Enter the issue case number.

Enter search terms.

Create a new case.

Answer area

>

<

↑

↓

- A. Mastered
- B. Not Mastered

Answer: A

Explanation:

Reference:

<https://docs.microsoft.com/en-us/dynamics365/unified-operations/dev-itpro/lifecycle-services/issue-search-lcs>

NEW QUESTION 57

- (Exam Topic 2)

Note: This question is part of a series of questions that present the same scenario. Each question in the series contains a unique solution that might meet the stated goals. Some question sets might have more than one correct solution, while others might not have a correct solution. After you answer a question in this section, you will NOT be able to return to it. As a result, these questions will not appear in the review screen. You are a Dynamics 365 for Finance and Operations security administrator. When testing security setups, users report that certain roles are gaining access to sensitive information via a form in the system. You must investigate which user roles have what visibility and access level to system objects, and then send a report to the implementation team to address security compliance concerns. You need to report the information from the system. Solution: Generate the Security duty assignments report. Does the solution meet the goal?

- A. Yes
- B. No

Answer: B

NEW QUESTION 59

- (Exam Topic 2)

Note: This question is part of a series of questions that present the same scenario. Each question in the series contains a unique solution that might meet the stated goals. Some question sets might have more than one correct solution, while others might not have a correct solution.

After you answer a question in this section, you will NOT be able to return to it. As a result, these questions will not appear in the review screen.

You are configuring a Dynamics 365 for Finance and Operations environment. You must set up Microsoft Excel data exports.

You need to verify that the solution will result in a successful export of data to Excel.

Solution: Use Open in Excel to open an entity form that does not share the same root data source by implementing the ExportToExcelGeneratedCustomExport interface.

Does the solution meet the goal?

- A. Yes
- B. No

Answer: B

NEW QUESTION 62

- (Exam Topic 2)

You implement Dynamics 365 for Finance and Operations. The implementation will undergo User Acceptance Testing (UAT).

You create test case recordings. To coordinate testing across multiple environments, UAT must be integrated with Microsoft Azure DevOps.

You need to configure Business process modeler (BPM) and Azure DevOps to complete user acceptance testing.

Which three actions should you perform? Each correct answer presents a complete solution.

NOTE: Each correct selection is worth one point.

- A. Synchronize the BPM library with Azure DevOps
- B. Create a test pass and test case in Azure DevOps
- C. Upload saved Task recorder files to BPM
- D. Create a test plan and test suites in Azure DevOps
- E. Synchronize the BPM library with a Git repo
- F. Upload saved Task recorder files to Azure DevOps

Answer: ACD

Explanation:

References:

<https://docs.microsoft.com/en-us/dynamics365/unified-operations/dev-itpro/lifecycle-services/using-taskguides-and-bpm-to-create-user-acceptance-tests>

NEW QUESTION 66

- (Exam Topic 2)

You set up Dynamics 365 for Finance and Operations. Your organization will use email with the application.

You need to ensure that email will be sent using typical secure settings. What setting must be set as specified?

- A. In-place hold and Litigation hold are enabled.
- B. In-place eDiscovery is enabled,
- C. The SMTP port field is set to 587.
- D. Retention policies are enabled.

Answer: C

NEW QUESTION 69

- (Exam Topic 2)

Note: This question is part of a series of questions that present the same scenario. Each question in the series contains a unique solution that might meet the stated goals. Some question sets might have more than one correct solution, while others might not have a correct solution.

After you answer a question in this section, you will NOT be able to return to it. As a result, these questions will not appear in the review screen.

You are developing a file-based integration to Dynamics 365 for Finance and Operations.

Microsoft Excel files with 15,000 or more records need to be imported into the system periodically by individual users. The records need to be imported in full within a 5-minute approved window.

You need to determine how to accomplish the import into the system.

Solution: Import the data by using the Data Management Framework's package API. Does the solution meet the goal?

- A. Yes
- B. No

Answer: B

NEW QUESTION 71

- (Exam Topic 2)

You are a Dynamics 365 for Finance and Operations system administrator for a United States-based corporation that is expanding to other regions.

You set up a new legal entity for Brazil.

You need to enable localization for Brazil in the new legal entity. What should you do?

- A. Create a new Lifecycle Services project.
- B. Create a new entity with your corporate address in the system, and then update the address to the Brazil office address.

- C. Create a new legal entity with the Brazil office address in the system, and then set preferences according to the user.
- D. Create a new configuration key and associate it with the Brazil localization.
- E. Create a new entity in the system with your corporate address and set the user language preferences for Brazil.

Answer: D

NEW QUESTION 74

- (Exam Topic 2)

You are a Dynamics 365 for Finance and Operations systems analyst.

A user configures an alert for purchase orders that have a delivery date of two weeks away. However, batch alerts are not being sent.

You need to troubleshoot why alerts are not processing.

What two actions may be the cause for alerts not being sent? Each correct answer presents a complete solution. NOTE: Each correct selection is worth one point.

- A. The date format in the Dynamics 365 tenant does not match the format in the client device-CD
- B. A batch processing window may be set up for that batch job.
- C. The change-based alert has expired.
- D. There may not be a batch server assigned to the batch job.

Answer: CD

Explanation:

Reference:

<https://community.dynamics.com/ax/b/shafeealabadiaxtutorials/posts/ax-2012-alert-management-part-ii-due-dat>

NEW QUESTION 75

- (Exam Topic 2)

Note: This question is part of a series of questions that present the same scenario. Each question in the series contains a unique solution that might meet the stated goals. Some question sets might have more than one correct solution, while others might not have a correct solution.

After you answer a question in this section, you will NOT be able to return to it. As a result, these questions will not appear in the review screen.

You are a Dynamics 365 for Finance and Operations system administrator. You have a test environment that is used by several people at any given time.

You create a new data entity in your development and migrate the code to the test environment. In the test environment, you are unable to find the data entity in the list.

You need to locate the data entity.

Solution: In the Data management framework parameter screen, refresh the Entity list. Does the solution meet the goal?

- A. Yes
- B. No

Answer: A

NEW QUESTION 78

- (Exam Topic 2)

Note: This question is part of a series of questions that present the same scenario. Each question in the series contains a unique solution that might meet the stated goals. Some question sets might have more than one correct solution, while others might not have a correct solution.

After you answer a question in this section, you will NOT be able to return to it. As a result, these questions will not appear in the review screen.

You are configuring a Dynamics 365 for Finance and Operations environment. You must set up Microsoft Excel data exports.

You need to verify that the solution will result in a successful export of data to Excel. Solution: Use OAuth authentication.

Does the solution meet the goal?

- A. Yes
- B. No

Answer: B

NEW QUESTION 80

- (Exam Topic 2)

A company needs to set up its printers to work with Dynamics 365 for Finance and Operations. You need to set up the printers for network printing from the Dynamics 365 client browser.

Which three actions should be performed in order? To answer, move all actions from the list of actions to the answer area and arrange them in the correct order.

Actions

Answer Area

Activate the network printers

Install and configure a document routing agent

Set up the network printer and assign a static IP

Register network printers in Finance and Operations



- A. Mastered
- B. Not Mastered

Answer: A

Explanation:

References:

<https://docs.microsoft.com/en-us/dynamics365/unified-operations/dev-itpro/analytics/install-document-routing-a>

NEW QUESTION 85

- (Exam Topic 2)

A company implements Dynamics 365 for Finance and Operations.

You are the primary approver for purchase requisitions that are greater than \$500,000. You are going on vacation for two weeks.

You need to assign another user as the approver only for purchase requisitions greater than \$500,000. What should you do?

- A. Under User Options, add a user and assign the scope of Module
- B. Under User Options, add a user and assign the scope of All
- C. Under User Options, add a user and assign the scope of Workflow

Answer: C

NEW QUESTION 87

- (Exam Topic 2)

You manage a Dynamics 365 for Finance and Operations environment.

In preparation for being migrated into a new environment, data packages are being numbered in alignment with the default numbering formats in Lifecycle Services. A package is named 03.01.002.

You need to identify what this package contains. To answer, select the appropriate option in the answer area. NOTE: Each correct selection is worth one point.

Segment	Component
03	<div>The environment The module The data type The month</div>
01	<div>The module The month The sequence number The data type</div>
002	<div>The sequence number The data package version The data entity The data type reference</div>

- A. Mastered
- B. Not Mastered

Answer: A

Explanation:

Segment	Component
03	<div>The environment The module The data type The month</div>
01	<div>The module The month The sequence number The data type</div>
002	<div>The sequence number The data package version The data entity The data type reference</div>

NEW QUESTION 89

- (Exam Topic 2)

Note: This question is part of a series of questions that present the same scenario. Each question in the series contains a unique solution that might meet the stated goals. Some question sets might have more than one correct solution, while others might not have a correct solution.

After you answer a question in this section, you will NOT be able to return to it. As a result, these questions will not appear in the review screen.

You are developing a file-based integration to Dynamics 365 for Finance and Operations.

Microsoft Excel files with 15,000 or more records need to be imported into the system periodically by individual users. The records need to be imported in full within a 5-minute approved window.

You need to determine how to accomplish the import into the system. Solution: Import the data by using the recurring data integrations API. Does the solution meet the goal?

- A. Yes
- B. No

Answer: B

NEW QUESTION 92

.....

Thank You for Trying Our Product

We offer two products:

1st - We have Practice Tests Software with Actual Exam Questions

2nd - Questons and Answers in PDF Format

mb-300 Practice Exam Features:

- * mb-300 Questions and Answers Updated Frequently
- * mb-300 Practice Questions Verified by Expert Senior Certified Staff
- * mb-300 Most Realistic Questions that Guarantee you a Pass on Your FirstTry
- * mb-300 Practice Test Questions in Multiple Choice Formats and Updatesfor 1 Year

100% Actual & Verified — Instant Download, Please Click
[Order The mb-300 Practice Test Here](#)