

Microsoft

Exam Questions mb-300

Microsoft Dynamics 365 Unified Operations Core



NEW QUESTION 1

- (Exam Topic 1)

You need to configure the system for account representatives.

Which two actions should you perform? Each correct answer presents a partial solution.

NOTE: Each correct selection is worth one point.

- A. Recreate the job alert as a change-based alert.
- B. Enable change-based alerts.
- C. Increase the batch job running frequency.
- D. Specify the batch server for the alert notifications job.

Answer: AB

NEW QUESTION 2

- (Exam Topic 1)

You need to configure check printing for Munson's.

Which four actions should you perform in sequence? To answer, move the appropriate actions from the list of actions to the answer area and arrange them in the correct order.

Actions	Answer Area
Install the Document Routing Agent on the client machines where users will be printing the checks.	
Navigate to the legal entity and enable the printer.	
Select the legal entities for the printer to be available.	
Discover and add the check printer from the Document Routing Agent.	
Enter the Dynamics 365 Finance and Operations configurations in the Document Routing Agent.	
Discover and add the check printer to the system from Dynamics 365 Finance and Operations.	
Install the Document Routing Agent on the corporate print server.	
Register the Document Routing Agent with Dynamics 365 Finance and Operations.	

- A. Mastered
- B. Not Mastered

Answer: A

Explanation:

Reference:

<https://docs.microsoft.com/en-us/dynamics365/unified-operations/dev-itpro/analytics/install-document-routing-a>

NEW QUESTION 3

- (Exam Topic 2)

You plan the migration from Dynamics AX 2012 R3 to a Dynamics 365 for Finance and Operations environment. You will be using Lifecycle Services (LCS) and the tools provided with it.

You need to clean up data, review and configure SQL optimizations, and identify deprecated features in your code. What tool should you use?

- A. Microsoft Azure DevOps
- B. Upgrade analyzer
- C. Data Import/Export Framework (DIXF)
- D. Code upgrade estimation tools

Answer: B

NEW QUESTION 4

- (Exam Topic 2)
You are a Dynamics 365 for Finance and Operations system administrator.
Users have been creating advanced queries for filter data on forms. They want to be able to save the filter data for later use and access those views when they log in.
You need to instruct them in how to do this.
Which four actions should end users perform in sequence? To answer, move the appropriate actions from the list of actions to the answer area and arrange them in the correct order.

Actions

Select the saved query.

Click Save as filter.

Click Configure.

Filter the data in the grid via the advanced filter.

Right-click and select Personalize this form.

Click Options, and then select Add to workspace.

Select the workspace and presentation.

Add the All Customers form to favorites.

Answer Area

- A. Mastered
- B. Not Mastered

Answer: A

Explanation:

Actions

Select the saved query.

Click Save as filter.

Click Configure.

Filter the data in the grid via the advanced filter.

Right-click and select Personalize this form.

Click Options, and then select Add to workspace.

Select the workspace and presentation.

Add the All Customers form to favorites.

Answer Area

Add the All Customers form to favorites.

Click Configure.

Select the saved query.

Click Options, and then select Add to workspace.

NEW QUESTION 5

- (Exam Topic 2)
You are the project owner in a Lifecycle Services (LCS) project to deploy a Dynamics 365 for Finance and Operations environment.
The system must be configured to enable testers to record processes that become business processes and test plans.
You need to configure the system to generate User Acceptance Testing (UAT) test plans.
In which order should you perform the actions? To answer, move all actions from the list of actions to the answer area and arrange them in the correct order.

Actions

Create business process libraries in the LCS project.

Enable Azure DevOps sync.

Configure Azure DevOps for the LCS project.

Configure system administrator help parameters to the LCS project.

Enable Sync test cases.

>

<

Answer Area

<

>

- A. Mastered
B. Not Mastered

Answer: A

Explanation:

Actions

Create business process libraries in the LCS project.

Enable Azure DevOps sync.

Configure Azure DevOps for the LCS project.

Configure system administrator help parameters to the LCS project.

Enable Sync test cases.

Answer Area

Create business process libraries in the LCS project.

Configure Azure DevOps for the LCS project.

Configure system administrator help parameters to the LCS project.

Enable Azure DevOps sync.

Enable Sync test cases.

<

>

NEW QUESTION 6

- (Exam Topic 2)

You are a Dynamics 365 for Finance and Operations system administrator.

Data is being migrated from a customized version of a legacy application to Dynamics 365 for Finance and Operations. Some of the fields in the entity are the same, and some are different.

As a starting point, you need to automatically map as many fields as possible within Dynamics 365 for Finance and Operations.

Which feature or tool should you use?

- A. Use the Mapping visualization tool
B. Generate source mapping
C. Use the Data task automation tool
D. Copy configuration data
E. Use Data templates

Answer: A

Explanation:

References:

<https://docs.microsoft.com/en-us/dynamics365/unified-operations/dev-itpro/data-entities/data-entities-data-pack>

NEW QUESTION 7

- (Exam Topic 2)

A multinational company has many legal entities and a complex organizational structure.

The management of the company wants to set up an organizational hierarchy to help improve efficiency. You need to help create the organizational hierarchy.

In which order should you recommend that actions be performed to create an organizational hierarchy? To answer, move all actions from the list of actions to the answer area and arrange them in the correct order.

1 2 3 4 5

Actions

- Add organizations to the hierarchy
- Assign a hierarchy purpose
- Create organizations
- Create a hierarchy
- Plan the organizational model



Answer Area



- A. Mastered
- B. Not Mastered

Answer: A

Explanation:

References:
<https://docs.microsoft.com/en-us/dynamics365/unified-operations/fin-and-ops/organization-administration/tasks>

NEW QUESTION 8

- (Exam Topic 2)
You are tasked with enhancing usability in the Dynamics 365 for Finance and Operations deployment for your organization. Your organization is evaluating different approaches, including using workspaces. You need to identify the goals of using workspaces. Which goals should you identify? To answer, select the appropriate options in the answer area. NOTE: Each correct selection is worth one point.

Answer Area

Requirement	Functional use
Visibility	<div>Understand the current state of the light task activity to support informed decisions</div> <div>Display deep information supporting complex task execution</div>
Workspace definition	<div>An initial overview for a specific role to increase productivity</div> <div>A view of complex activities requiring interaction across different roles</div>

- A. Mastered
- B. Not Mastered

Answer: A

Explanation:

Answer Area

Requirement	Functional use
Visibility	<div>Understand the current state of the light task activity to support informed decisions</div> <div>Display deep information supporting complex task execution</div>
Workspace definition	<div>An initial overview for a specific role to increase productivity</div> <div>A view of complex activities requiring interaction across different roles</div>

NEW QUESTION 9

- (Exam Topic 2)
You are a Dynamics 365 for Finance and Operations system administrator. You have production and testing environments. You move the workflow from the testing environment to the production environment. The workflow in the production environment is stuck in a wait state. You need to resolve the issue with the workflow in the production environment. What should you do?

- A. Set the workflow batch job to critical
- B. Set the workflow messaging batch job group
- C. Grant the user workflow permissions

D. Set the workflow execution account in the workflow parameters

Answer: D

NEW QUESTION 10

- (Exam Topic 2)

You plan the migration from Dynamics AX 2009 to a Dynamics 365 for Finance and Operations environment. You will be moving data. You need to create a data package from a group of entities in Dynamics AX 2009. What should you use?

- A. Upgrade analyzer
- B. Code upgrade estimation tools
- C. Dynamics AX 2009 Data migration tool (DMT)
- D. Data Import/Export Framework (DIXF)

Answer: D

Explanation:

References:

<https://docs.microsoft.com/en-us/dynamics365/unified-operations/dev-itpro/migration-upgrade/ax2009-upgrade-export-package>

NEW QUESTION 10

- (Exam Topic 2)

A company implements Dynamics 365 for Finance and Operations.

They need additional information and want a subledger to record information for additional reporting rather than customizing all reports.

You need to set up the posting to accommodate the need for a subledger. Which three actions should you take? Each answer presents part of the solution.

- A. Update existing reports to prevent data in the identified area from reporting
- B. Create posting profiles to post to the identified area as needed for the request
- C. Create posting definitions to post to the identified area as needed for the request
- D. Update existing reports to add data in the identified area
- E. Identify an area of the chart of accounts to record to as the subledger

Answer: BDE

NEW QUESTION 12

- (Exam Topic 2)

Note: This question is part of a series of questions that present the same scenario. Each question in the series contains a unique solution that might meet the stated goals. Some question sets might have more than one correct solution, while others might not have a correct solution.

After you answer a question in this section, you will NOT be able to return to it. As a result, these questions will not appear in the review screen.

You are a Dynamics 365 for Finance and Operations system administrator. You have a test environment that is used by several people at any given time.

You create a new data entity in your development and migrate the code to the test environment. In the test environment, you are unable to find the data entity in the list.

You need to locate the data entity.

Solution: Restart the Application Object Server (AOS) of the test environment. Does the solution meet the goal?

- A. Yes
- B. No

Answer: B

NEW QUESTION 15

- (Exam Topic 2)

You are a Dynamics 365 for Finance and Operations system administrator.

A company named Contoso Ltd. is creating a new legal entity that will be similar to an existing legal entity. Team members copy key entities to the new legal entity using the Data management workspace. They indicate that there were already-configured pieces of data unique to the new legal entity before they ran the Copy into legal entity process.

The data import/export framework settings are listed in the table below:

Setting	Current value
Ignore error	Yes
Create error file	Yes
Remove duplicates	Yes

You need to determine what happened to the already-configured pieces of data. What happened to the data?

- A. Any source legal entity data that already exists in the destination legal entity will be updated.
- B. Any destination legal entity data will be deleted, and the source data will be inserted.
- C. Any source legal entity data that already exists in the destination legal entity will be ignored.
- D. Any source legal entity data that already exists in the destination legal entity will be displayed as an error for user action in the Data management workspace.

Answer: C

NEW QUESTION 17

- (Exam Topic 2)

A company implements Dynamics 365 for Finance and Operations.

You have a requirement that the component data for address structure in the system be available in Portuguese (Brazil).

You need to provide address and contact information purpose with translation. What should you do?

- A. Under Organization administration, on the Global addresses tab, enter the appropriate translation value in the translations form
- B. In User options, set the language preference to Portuguese pt-BR and enter addresses for customers and vendors
- C. Upload files to Dynamics 365 Translation Services (DTS) for conversion
- D. Apply return from Dynamics 365 Translation Services (DTS) to the system by submitting a support ticket

Answer: A

NEW QUESTION 20

- (Exam Topic 2)

A company plans to use Dynamics 365 for Finance and Operations. You need to implement the security architecture. Which component should you use for each requirement? To answer, select the appropriate security component in the answer area.
NOTE: Each correct selection is worth one point.

Answer Area

Requirement	Security component
Group the security configuration for employees with the same job function.	<div>Security roles</div> <div>Duties</div> <div>Privileges</div> <div>Permissions</div>
Assign check-depositing tasks to a group of people as part of the accounts receivable process.	<div>Security roles</div> <div>Duties</div> <div>Privileges</div> <div>Permissions</div>
Restrict access to a specific table or chart.	<div>Security roles</div> <div>Duties</div> <div>Privileges</div> <div>Permissions</div>

- A. Mastered
- B. Not Mastered

Answer: A

Explanation:

Answer Area

Requirement	Security component
Group the security configuration for employees with the same job function.	<div>Security roles</div> <div>Duties</div> <div>Privileges</div> <div>Permissions</div>
Assign check-depositing tasks to a group of people as part of the accounts receivable process.	<div>Security roles</div> <div>Duties</div> <div>Privileges</div> <div>Permissions</div>
Restrict access to a specific table or chart.	<div>Security roles</div> <div>Duties</div> <div>Privileges</div> <div>Permissions</div>

NEW QUESTION 25

- (Exam Topic 2)

A company plans to use record templates in its implementation. You need to set up and use record templates. Which three actions should you perform in sequence to create the record templates? To answer, move the appropriate actions from the list of actions to the answer area and arrange them in the correct order.

Actions

Use the Record info feature

Create a user template

Create a company accounts template

Change the Record view property

Identify the templatized record

Answer Area

- A. Mastered
- B. Not Mastered

Answer: A

Explanation:

References:

<https://docs.microsoft.com/en-us/dynamics365/unified-operations/dev-itpro/data-entities/tasks/create-record-tem>

NEW QUESTION 29

- (Exam Topic 2)

Note: This question is part of a series of questions that present the same scenario. Each question in the series contains a unique solution that might meet the stated goals. Some question sets might have more than one correct solution, while others might not have a correct solution.

After you answer a question in this section, you will NOT be able to return to it. As a result, these questions will not appear in the review screen.

You are a functional consultant who is deploying Dynamics 365 for Finance and Operations. The implementation must:

- ☐ Use an iterative approach
- ☐ Integrate with real-world data
- ☐ Enforce standards and governance
- ☐ Implement multiple rounds of feedback

You need to deploy and validate the implementation.

Solution: Use the XPPBP tool to export customizations and scenarios from a development sandbox. Make changes to the sandbox containing users. Deploy from the sandbox to the production environment.

Does the solution meet the goal?

- A. Yes
- B. No

Answer: B

NEW QUESTION 31

- (Exam Topic 2)

Note: This question is part of a series of questions that present the same scenario. Each question in the series contains a unique solution that might meet the stated goals. Some question sets might have more than one correct solution, while others might not have a correct solution.

After you answer a question in this section, you will NOT be able to return to it. As a result, these questions will not appear in the review screen.

You are a functional consultant who is deploying Dynamics 365 for Finance and Operations. The implementation must:

- ☐ Use an iterative approach
- ☐ Integrate with real-world data
- ☐ Enforce standards and governance
- ☐ Implement multiple rounds of feedback

You need to deploy and validate the implementation.

Solution: Deploy the out-of-the-box solution. Enable users to customize the solution based on individual user scenarios.

Does the solution meet the goal?

- A. Yes
- B. No

Answer: B

NEW QUESTION 34

- (Exam Topic 2)

You are responsible for regulatory compliance for a Dynamics 365 for Finance and Operations environment. You need to be able to search for the regulatory features of Dynamics 365 for Finance and Operations.

What should you use?

- A. Intelligent Data Management Framework (IDMF)
- B. System diagnostics
- C. Application Object Tree (AOT)
- D. Issue search

Answer: D

Explanation:

References:

<https://docs.microsoft.com/en-us/dynamics365/unified-operations/dev-itpro/lifecycle-services/issue-search-lcs>

NEW QUESTION 38

- (Exam Topic 2)

You are a Dynamics 365 for Finance and Operations system administrator.

The expense department relies heavily on properly operating workflows. If there is a failure in the workflow, the issue needs to get resolved quickly.

You need to make sure that the system actively tracks the status, so the support team can monitor and take actions against any failures.

What should you do? Each correct answer presents a complete solution.

NOTE: Each correct selection is worth one point.

- A. Set the monitoring category of the Workflow message processing batch job to Workflow.
- B. Set the critical job flag of the Workflow message processing batch job to True.
- C. Set the Ignore task failure flag of the Workflow message processing batch job to False.
- D. Set the batch job named Workflow message processing to send an email when the status of the batch job is Error.
- E. Set the priority field of the Workflow message processing batch job to 1.

Answer: BCD

NEW QUESTION 43

- (Exam Topic 2)

A company implements Dynamics 365 for Finance and Operations. It sets up and configures the system to support reporting requirements using Microsoft Power BI.

The customer service manager wants to create reports in Power BI for analyzing customer order patterns, order fulfillment metrics, customer satisfaction KPIs, and customer service representative goal metrics. These reports compare aggregated information across multiple demographic regions and business lines for current trends against historic information.

The manager would like to use the reports to make individual team performance more visible to the managerial and executive teams. Since reports will be used by those teams as well as mobile users, the manager would like the report response to reflect the latest data without requiring the user to wait.

You need to determine which tool or functionality best fits the scenario.

Which feature or functionality should you use? To answer, select the appropriate feature or functionality in the dialog box in the answer area.

NOTE: Each correct selection is worth one point

Answer Area

Scenario	Feature or functionality
Stage the aggregate data for use by the reports.	<div>Dynamics 365 system administration settings</div> <div>Power BI desktop client</div> <div>Lifecycle Services</div>
Set the data source to use DirectQuery.	<div>Dynamics 365 system administration settings</div> <div>Power BI desktop client</div> <div>Lifecycle Services</div>
Publish the new reports to the production environment.	<div>Dynamics 365 system administration settings</div> <div>Power BI desktop client</div> <div>Lifecycle Services</div>
Configure the data refresh rate for periodic updating.	<div>Dynamics 365 system administration settings</div> <div>Power BI desktop client</div> <div>Lifecycle Services</div>

A. Mastered

B. Not Mastered

Answer: A

Explanation:

Answer Area

Scenario	Feature or functionality
Stage the aggregate data for use by the reports.	<div>Dynamics 365 system administration settings</div> <div>Power BI desktop client</div> <div>Lifecycle Services</div>
Set the data source to use DirectQuery.	<div>Dynamics 365 system administration settings</div> <div>Power BI desktop client</div> <div>Lifecycle Services</div>
Publish the new reports to the production environment.	<div>Dynamics 365 system administration settings</div> <div>Power BI desktop client</div> <div>Lifecycle Services</div>
Configure the data refresh rate for periodic updating.	<div>Dynamics 365 system administration settings</div> <div>Power BI desktop client</div> <div>Lifecycle Services</div>

NEW QUESTION 44

- (Exam Topic 2)

You are responsible for automation efforts in a Dynamics 365 for Finance and Operations environment. You are running into performance issues on a specific Application Object Server (AOS) that is over-used. You need to alter your batch processing of high-demand items to have affinity to a new AOS server. What batch processing component should you change?

A. Batch task

- B. Batch group
- C. Batch periods
- D. Batch job

Answer: A

NEW QUESTION 47

- (Exam Topic 2)

You set up security roles for the users in a company. You must use standard security roles when possible. You need to identify the standard security roles. Which of the following can you assign to a user as a standard security role?

- A. Leasing manager
- B. System engineer
- C. Business development manager
- D. Waterspider

Answer: D

NEW QUESTION 49

- (Exam Topic 2)

You receive an error when importing data into the pilot instance. You need to troubleshoot the error. What should you do first?

Answer Area

You receive an error when importing data into the pilot instance. You need to troubleshoot the error. What should you do first?

Set the entity order to Customer parameters, Customer groups, Customers V3, Customer invoicing journal.
Set Default refresh type to Full push only.
Set Skip staging to Yes.
Set Generate data package to No.

Only a subset of customers is imported into the pilot instance. You make a correction to ensure that all customer data is imported. What should you do next?

Set the entity order to Customer parameters, Customer groups, Customers V3, Customer invoicing journal.
Set Default refresh type to Full push only.
Set Skip staging to Yes.
Set Generate data package to No.

- A. Mastered
- B. Not Mastered

Answer: A

Explanation:

Answer Area

You receive an error when importing data into the pilot instance. You need to troubleshoot the error. What should you do first?

Set the entity order to Customer parameters, Customer groups, Customers V3, Customer invoicing journal.
Set Default refresh type to Full push only.
Set Skip staging to Yes. ¹
Set Generate data package to No.

Only a subset of customers is imported into the pilot instance. You make a correction to ensure that all customer data is imported. What should you do next?

Set the entity order to Customer parameters, Customer groups, Customers V3, Customer invoicing journal.
Set Default refresh type to Full push only.
Set Skip staging to Yes.
Set Generate data package to No.

NEW QUESTION 52

- (Exam Topic 2)

You are configuring the address books for a company's accounts receivable, accounts payable, and retail operations. You need to configure the appropriate address books to meet various requirements. Which address book should you use for each scenario? To answer, drag the appropriate address book objects to the correct scenarios. Each address book object may be used once, more than once, or not at all. You may need to drag the spit bar between panes or scroll to view content. NOTE: Each correct selection is worth one point.

Address Book Object	Scenario	Address Book Object
employee	Restrict account visibility for a given retail channel transaction. Create an address for a vendor. Link workers to retail locations. Create an address for a prospect.	Address Book Object
global		Address Book Object
customer		Address Book Object
contact		Address Book Object

- A. Mastered
- B. Not Mastered

Answer: A

Explanation:

Address Book Object	Scenario	Address Book Object
employee	Restrict account visibility for a given retail channel transaction. Create an address for a vendor. Link workers to retail locations. Create an address for a prospect.	customer
global		global
customer		employee
contact		contact

NEW QUESTION 56

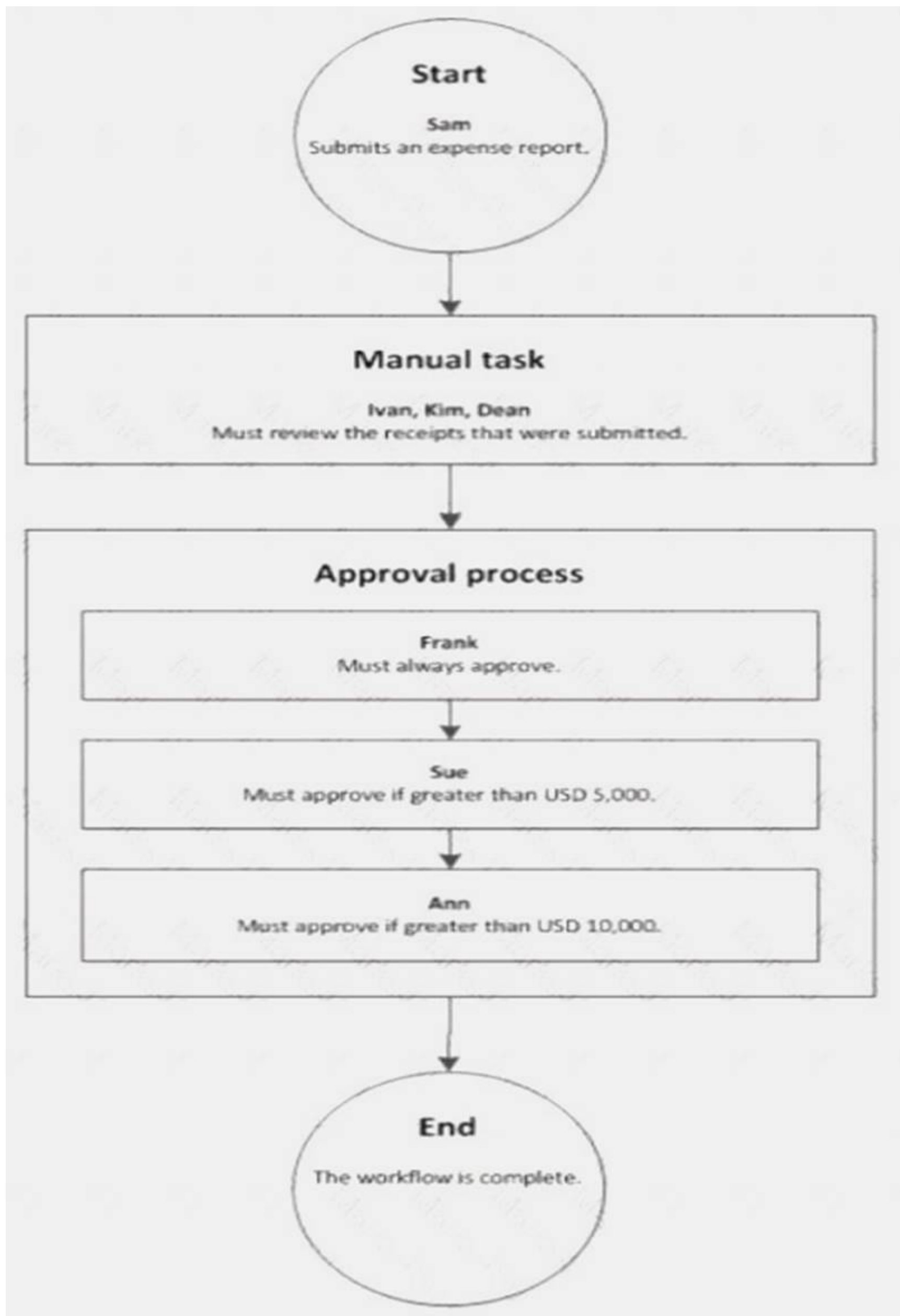
- (Exam Topic 2)
You are a Dynamics 365 for Finance and Operations system administrator. You manage a system that imports a large volume of sales orders from multiple systems daily. The system encounters a performance problem due to the amount of data. You need to improve performance for the import. What should you do?

- A. Create an ODBC-type source data format and import directly from the database.
- B. Enable data import in recurrence.
- C. Configure entity execution parameters to make the data import multi-threaded.
- D. Enable change for the data entities.

Answer: C

NEW QUESTION 58

- (Exam Topic 2)
A company sets up a workflow for expense reports. An employee named Sam submits an expense report totaling USD 7,000 to go through the workflow.



Use the drop-down menus to select the answer choice that answers each question based on the information presented in the graphic.

NOTE: Each correct selection is worth one point.

Answer Area	
Questions	Answer choice
What statement about the workflow is correct?	<div>Ann can reject the expense report.</div> <div>Ivan, Kim, and Dean must all complete the manual task.</div> <div>The workflow ends after Sue approves the expense report.</div> <div>The expense report will go through Frank, Sue, and Ann for approval.</div>
What type of workflow is this?	<div>Workflow with roles</div> <div>Workflow with a manual decision</div> <div>Workflow with multiple users in a task</div> <div>Workflow with a line-item workflow element</div>

- A. Mastered
- B. Not Mastered

Answer: A

Explanation:

Reference:
<https://docs.microsoft.com/en-us/dynamicsax-2012/appuser-itpro/workflow-with-multiple-users-in-a-task>

NEW QUESTION 62

- (Exam Topic 2)

Note: This question is part of a series of questions that present the same scenario. Each question in the series contains a unique solution that might meet the stated goals. Some question sets might have more than one correct solution, while others might not have a correct solution.

After you answer a question in this section, you will NOT be able to return to it. As a result, these questions will not appear in the review screen.

You are a Dynamics 365 for Finance and Operations system administrator. You have a test environment that is used by several people at any given time.

You create a new data entity in your development and migrate the code to the test environment. In the test environment, you are unable to find the data entity in the list.

You need to locate the data entity.

Solution: Enable the Public API check box in the data entity. Does the solution meet the goal?

- A. Yes
- B. No

Answer: B

NEW QUESTION 64

- (Exam Topic 2)

You are a Dynamics 365 for Finance and Operations system administrator.

A user is reporting an issue with the Sales Order form. The UI for the form is not loading properly, and there are some performance issues. The object was working fine until the most recent update release. The user has personalized this form, is using Microsoft Internet Explorer 11, and no other users are reporting issues.

You need to resolve the issue. What should you do?

- A. Switch to Microsoft Edge instead of Internet Explorer 11.
- B. Open the form in a new Microsoft Edge InPrivate session.
- C. Delete the sales form object in the usage data form.
- D. Disable and then re-enable the user.

Answer: A

NEW QUESTION 68

- (Exam Topic 2)

You are a system administrator using Dynamics 365 for Finance and Operations. You work in a project-based organization.

Each project has an approval process that will be assigned to different users of the system. Approvals are processed based on documents. Within those documents are different line items. Each line item may have a different approver.

You need to validate if the proposed action will satisfy the requirements.

For each of the following solutions, select Yes if the action meets the requirements. Otherwise, select No. NOTE: Each correct selection is worth one point.

Answer Area			
Action		Yes	No
Configure document types. Configure document management parameters.		<input type="radio"/>	<input type="radio"/>
Create a document workflow. Configure line-item workflow elements for the document workflow.		<input type="radio"/>	<input type="radio"/>
Create workflow actions for when the document is assigned to the approver.		<input type="radio"/>	<input type="radio"/>
Set up reason codes for electronic signatures.		<input type="radio"/>	<input type="radio"/>

- A. Mastered
- B. Not Mastered

Answer: A

Explanation:

Answer Area

Action	Yes	No
Configure document types. Configure document management parameters.	<input checked="" type="radio"/>	<input type="radio"/>
Create a document workflow. Configure line-item workflow elements for the document workflow.	<input type="radio"/>	<input checked="" type="radio"/>
Create workflow actions for when the document is assigned to the approver.	<input checked="" type="radio"/>	<input type="radio"/>
Set up reason codes for electronic signatures.	<input checked="" type="radio"/>	<input type="radio"/>

NEW QUESTION 72

- (Exam Topic 2)

Your company is using a highly customized version of Dynamics 365 for Finance and Operations. You have identified a new hotfix that will correct several important issues that have caused many user complaints. You need to determine whether the hotfix will break any customizations. Which four actions should you perform in sequence? To answer, move the appropriate actions from the list of actions to the answer area and arrange them in the correct order.

Actions

Upload the hotfix to Lifecycle Services

Download the hotfix from Lifecycle Services

Check in the entire hotfix as pending change and schedule and deploy it to the production environment

Build the hotfix in the development environment and accept changes

Install the hotfix in your Microsoft Azure DevOps application development environment in an Active state

Install the hotfix in your Microsoft Azure DevOps application development environment in a Pending state

←

→

Answer Area

- A. Mastered
- B. Not Mastered

Answer: A

Explanation:

References:

<https://docs.microsoft.com/en-us/dynamics365/unified-operations/dev-itpro/migration-upgrade/install-metadata->

NEW QUESTION 74

- (Exam Topic 2)

You are a Dynamics 365 for Finance and Operations system administrator. The finance department is experiencing electronic reporting submittal issues. You must use all available sources to troubleshoot those issues. You need to identify potential hotfixes. Which four actions should you perform in sequence? To answer, move the appropriate actions from the list of actions to the answer area and arrange them in the correct order.

Actions

Log in to Lifecycle Services (LCS).

Use the Issue search tile.

Select a project to work in.

Enter the issue case number.

Enter search terms.

Create a new case.

>

<

Answer area

↑

↓

- A. Mastered
- B. Not Mastered

Answer: A

Explanation:
Reference:
<https://docs.microsoft.com/en-us/dynamics365/unified-operations/dev-itpro/lifecycle-services/issue-search-lcs>

NEW QUESTION 75

- (Exam Topic 2)
Your company acquires hundreds of partnerships after it purchases a separate company. The separate company stores the partnership records in a legacy system. You export Partnership and PartnershipGroup files from the legacy system into Microsoft Word format. You create Partnership and PartnershipGroup entities. You need to import the partnerships into Dynamics 365 for Finance and Operations. Which four actions should you perform in order? To answer, move four actions from the list of actions to the answer area and arrange them in the correct order.

Actions

Perform the data import.

Convert the Word files to OData format. In the Dynamics 365 client Data management workspace, create a new data project.

In SQL Server Management Studio, use the SQL Server Integration Services import wizard.

In the Visual Studio Finance and Operations project, use the Data entity wizard.

Convert the Word files to CSV format. In the Dynamics 365 client Data management workspace, create a new data project.

For each file, select the entities and upload the files.

Validate all entity data mapping.

>

<

Answer Area

↑

↓

- A. Mastered
- B. Not Mastered

Answer: A

Explanation:

Actions	Answer Area
Perform the data import.	Convert the Word files to CSV format. In the Dynamics 365 client Data management workspace, create a new data project.
Convert the Word files to OData format. In the Dynamics 365 client Data management workspace, create a new data project.	Perform the data import.
In SQL Server Management Studio, use the SQL Server Integration Services import wizard.	In SQL Server Management Studio, use the SQL Server Integration Services import wizard.
In the Visual Studio Finance and Operations project, use the Data entity wizard.	Validate all entity data mapping.
Convert the Word files to CSV format. In the Dynamics 365 client Data management workspace, create a new data project.	
For each file, select the entities and upload the files.	
Validate all entity data mapping.	

NEW QUESTION 80

- (Exam Topic 2)

Note: This question is part of a series of questions that present the same scenario. Each question in the series contains a unique solution that might meet the stated goals. Some question sets might have more than one correct solution, while others might not have a correct solution.

After you answer a question in this section, you will NOT be able to return to it. As a result, these questions will not appear in the review screen.

You are configuring a Dynamics 365 for Finance and Operations environment. You must set up Microsoft Excel data exports.

You need to verify that the solution will result in a successful export of data to Excel.

Solution: Use Open in Excel to open an entity form that does not share the same root data source by implementing the ExportToExcelGeneratedCustomExport interface.

Does the solution meet the goal?

- A. Yes
- B. No

Answer: B

NEW QUESTION 84

- (Exam Topic 2)

A company implements Dynamics 365 for Finance and Operations and sets up and configures the system to support its reporting requirements using Microsoft Power BI. A user creates a chart in her Power BI instance to display customer order patterns for the top 10 customers daily.

You need to configure the Power BI integration to pin the chart to the user's workspace in Dynamics 365 for Finance and Operations.

Which three actions should you perform? Each correct answer presents part of the solution. NOTE: Each correct selection is worth one point.

- A. In the Dynamics 365 for Finance and Operations client, authorize sign-in to Power BI.
- B. In Azure Active Directory, grant the customer services manager administrative permissions to the company's Azure Active Directory account to run the report.
- C. In Microsoft Azure Active Directory, add the PowerBI service to the app registration and grant the necessary delegated permissions.
- D. In the Entity store, configure the Application ID and Application key for PowerBI.
- E. In the Dynamics 365 for Finance and Operations System administration setup screen in PowerBI.com, configure the application ID and application key.

Answer: ACE

Explanation:

References:

<https://docs.microsoft.com/en-us/dynamics365/unified-operations/dev-itpro/analytics/configure-power-bi-integr>

NEW QUESTION 88

- (Exam Topic 2)

You plan a data migration from Dynamics AX 2009 to a Dynamics 365 for Finance and Operations environment.

You need to ensure that you can perform the data migration. What should you do first?

- A. Upgrade the existing on-premises environment to Dynamics 365 for Finance and Operations online
- B. Migrate content to Dynamics POS (Point-of-Sale) 2009
- C. Upgrade the existing on-premises environment to Dynamics AX 2012 R2
- D. Migrate content to Dynamics 365 Business Central

Answer: C

NEW QUESTION 92

- (Exam Topic 2)

A company plans to create a global address book and additional address books for each line of business. You need to help add parties to the address books. What party types can you use for both the global address book and the additional address books? NOTE: Each correct selection is worth one point.

- A. Customer
- B. Vendor
- C. Person
- D. Competitor
- E. Organization

Answer: ABD

Explanation:

<https://docs.microsoft.com/en-sg/dynamics365/unified-operations/fin-and-ops/organization-administration/overv>

NEW QUESTION 93

- (Exam Topic 2)

You are a Dynamics 365 for Finance and Operations system administrator.

You have 50 identified purchase order numbers that are not used in the system and are not being recycled. Why they are missing is unknown. Purchasing operations is currently operating around the clock and no downtime can occur.

You need to use the missing numbers in the system. What should you do?

- A. Run the Number sequence wizard for the purchase order number sequence.
- B. Change the number sequence to manual, then manually assign the number sequences to the new purchase orders.
- C. Change the number sequence to continuous and create the new purchase orders.
- D. Run Automatic cleanup of number sequence and create the new purchase orders.
- E. Change the number sequence to non-continuous and create the new purchase orders.

Answer: D

NEW QUESTION 95

- (Exam Topic 2)

You are a Dynamics 365 for Finance and Operations system administrator for a United States-based corporation that is expanding to other regions.

You set up a new legal entity for Brazil.

You need to enable localization for Brazil in the new legal entity. What should you do?

- A. Create a new Lifecycle Services project.
- B. Create a new entity with your corporate address in the system, and then update the address to the Brazil office address.
- C. Create a new legal entity with the Brazil office address in the system, and then set preferences according to the user.
- D. Create a new configuration key and associate it with the Brazil localization.
- E. Create a new entity in the system with your corporate address and set the user language preferences for Brazil.

Answer: D

NEW QUESTION 100

- (Exam Topic 2)

A company is migrating to Dynamics 365 for Finance and Operations from a legacy system. The company is creating new questionnaires for customers.

When the survey responses come in, the company wants to provide ratings as a foundation for a further discussion.

You set up questionnaire types, question types, and questionnaire parameters. You need to design the questionnaire.

In which order should you perform the actions? To answer, move all actions to the answer area and arrange them in the correct order.

Actions

Attach questions to the questionnaire

Set up the questionnaire

Set up questions and their association

Set up answer groups and answers

Answer Area

- A. Mastered
- B. Not Mastered

Answer: A

Explanation:

References:

<https://docs.microsoft.com/en-us/dynamics365/unified-operations/talent/design-questionnaires>

NEW QUESTION 101

- (Exam Topic 2)

Note: This question is part of a series of questions that present the same scenario. Each question in the series contains a unique solution that might meet the stated goals. Some question sets might have more than one correct solution, while others might not have a correct solution.

After you answer a question in this section, you will NOT be able to return to it. As a result, these questions will not appear in the review screen.

You are configuring a Dynamics 365 for Finance and Operations environment. You must set up Microsoft Excel data exports.

You need to verify that the solution will result in a successful export of data to Excel. Solution: Use OAuth authentication.

Does the solution meet the goal?

A. Yes

B. No

Answer: B

NEW QUESTION 104

- (Exam Topic 2)

A company implements Dynamics 365 for Finance and Operations.

The company's purchasing agents must be able to create purchase orders for a first-time vendor. All new vendor requests must be reviewed and approved by the accounts payable manager.

A workflow must send an email to the accounts payable manager and the senior accounts payable clerk notifying both when a vendor application is waiting for approval. The workflow must be configured to account for people changing job roles.

You need to configure the system to meet these requirements. What should you do?

A. On the Recipient tab, select Use

B. Then, select the users for the accounts payable manager and the senior accounts payable clerk from the list.

C. On the Recipient tab, select Workflow use

D. Then, select the user for purchasing agents from the list.

E. On the Recipient tab, select Workflow use

F. Then, select the role for vendor approval from the list.

G. On the Recipient tab, select Use

H. Then, select the role for vendor approval from the list.

I. On the Recipient tab, select Participan

J. Then, select the role for vendor approval from the list.

K. On the Recipient tab, select Participan

L. Then, select the users for the accounts payable manager and the senior accounts payable clerk from the list.

Answer: B

NEW QUESTION 109

- (Exam Topic 2)

You manage a Dynamics 365 for Finance and Operations environment.

In preparation for being migrated into a new environment, data packages are being numbered in alignment with the default numbering formats in Lifecycle Services. A package is named 03.01.002.

You need to identify what this package contains. To answer, select the appropriate option in the answer area. NOTE: Each correct selection is worth one point.

Segment	Component
03	<div>The environment The module The data type The month</div>
01	<div>The module The month The sequence number The data type</div>
002	<div>The sequence number The data package version The data entity The data type reference</div>

A. Mastered

B. Not Mastered

Answer: A

Explanation:

Segment	Component
03	<div>The environment The module The data type The month</div>
01	<div>The module The month The sequence number The data type</div>
002	<div>The sequence number The data package version The data entity The data type reference</div>

NEW QUESTION 113

- (Exam Topic 2)

Note: This question is part of a series of questions that present the same scenario. Each question in the series contains a unique solution that might meet the stated goals. Some question sets might have more than one correct solution, while others might not have a correct solution.

After you answer a question in this section, you will NOT be able to return to it. As a result, these questions will not appear in the review screen.

You are developing a file-based integration to Dynamics 365 for Finance and Operations.

Microsoft Excel files with 15,000 or more records need to be imported into the system periodically by individual users. The records need to be imported in full within a 5-minute approved window.

You need to determine how to accomplish the import into the system. Solution: Import the data by using the Excel Add-in.

Does the solution meet the goal?

- A. Yes
- B. No

Answer: A

NEW QUESTION 118

- (Exam Topic 2)

You are a Dynamics 365 for Finance and Operations security administrator. Users are reporting that they cannot access a given form in the system.

You need to quickly identify what roles, duties, and privileges grant access to this form to determine the best course of action for granting access.

What should you do?

- A. Security duty assignments report
- B. Security role access report
- C. Security development tool
- D. Security diagnostics
- E. Maintenance mode

Answer: D

NEW QUESTION 120

- (Exam Topic 2)

You are a Dynamics 365 for Finance and Operations system administrator. You create different workflows for Canada and the Unites States.

You must create a workflow that sends a notification to the North American workflow administrator with workflow comments in the notification.

You need to configure the workflows.

What option should you select for each scenario? To answer, select the appropriate options in the answer area. NOTE: Each correct selection is worth one point.

Scenario	Option
Include a notification with workflow-specific data.	Notification texts Work item instructions Placeholders Line-item workflows
Run a different workflow for each region.	Condition Automatic action Parallel activity Automated task
Send an email to a group of users by role when a workflow task is rejected.	Workflow user Participant Queue

- A. Mastered
- B. Not Mastered

Answer: A

Explanation:

Scenario	Option
Include a notification with workflow-specific data.	Notification texts Work item instructions Placeholders Line-item workflows
Run a different workflow for each region.	Condition Automatic action Parallel activity Automated task
Send an email to a group of users by role when a workflow task is rejected.	Workflow user Participant Queue

NEW QUESTION 123

- (Exam Topic 2)

You set up a new installation of Dynamics 365 for Finance and Operations for a Fortune 500 company. The company is organized into divisions.

You need to design the structure in the application.

What application features should you use? To answer, drag the appropriate setting to the correct drop targets. Each source may be used once, more than once, or not at all. You may need to drag the split bar between panes or scroll to view content.

NOTE: Each correct selection is worth one point.

Application features

Legal entity

Business unit

Department

Value stream

Answer Area

Organizational structure

The fortune 500 company

A semi-autonomous operating entity

Human resources

Production flow activity control

Application feature

Application feature

Application feature

Application feature

- A. Mastered
- B. Not Mastered

Answer: A

Explanation:

References:
<https://docs.microsoft.com/en-us/dynamics365/unified-operations/fin-and-ops/organization-administration/organ>

NEW QUESTION 126

- (Exam Topic 2)
You are a Dynamics 365 for Finance and Operations systems administrator.
An issue has been reported that appears to be a base Dynamics 365 bug. The system was last updated three weeks ago. Searching for the issue by description in Lifecycle Services is not working.
You need to determine other ways to search for similar issues to help narrow down the search before opening a Microsoft ticket.
What are two ways to search for a released hotfix? Each correct answer presents a complete solution.
NOTE: Each correct selection is worth one point.

- A. By industry
- B. By Microsoft support ticket number
- C. By AOT object name
- D. Date range for release

Answer: BC

Explanation:

References:
<https://docs.microsoft.com/en-us/dynamics365/unified-operations/dev-itpro/lifecycle-services/issue-search-lcs>

NEW QUESTION 131

.....

Thank You for Trying Our Product

We offer two products:

1st - We have Practice Tests Software with Actual Exam Questions

2nd - Questions and Answers in PDF Format

mb-300 Practice Exam Features:

- * mb-300 Questions and Answers Updated Frequently
- * mb-300 Practice Questions Verified by Expert Senior Certified Staff
- * mb-300 Most Realistic Questions that Guarantee you a Pass on Your FirstTry
- * mb-300 Practice Test Questions in Multiple Choice Formats and Updatesfor 1 Year

100% Actual & Verified — Instant Download, Please Click
[Order The mb-300 Practice Test Here](#)