

Cisco

Exam Questions 300-420

Designing Cisco Enterprise Networks (ENSLD)



NEW QUESTION 1

A company is running BGP on a single router, which has two connections to the same ISP. Which BGP feature ensures traffic is load balanced across the two links to the ISP?

- A. Multihop
- B. Multipath Load Sharing
- C. Next-Hop Address Tracking
- D. AS-Path Prepending

Answer: B

NEW QUESTION 2

When vEdge router redundancy is designed, which FHRP is supported?

- A. HSRP
- B. OMP
- C. GLBP
- D. VRRP

Answer: D

NEW QUESTION 3

An engineer is designing a QoS policy that queues excess packets for later transmission. Which mechanism must be included in the design?

- A. shaping
- B. WRED
- C. policing
- D. RED

Answer: A

NEW QUESTION 4

When a first hop redundancy solution is designed, which protocol ensures that load balancing occurs over multiple routers using a single virtual IP address and multiple virtual MAC addresses?

- A. GLBP
- B. IRDP
- C. VRRP
- D. HSRP

Answer: A

NEW QUESTION 5

An enterprise customer has these requirements:

- end-to-end QoS for the business-critical applications and VoIP services based on CoS marking.
- flexibility to offer services such as IPv6 and multicast without any reliance on the service provider.
- support for full-mesh connectivity at Layer 2.

Which WAN connectivity option meets these requirements?

- A. VPWS
- B. MPLS VPN
- C. DMVPN
- D. VPLS

Answer: D

NEW QUESTION 6

An engineer must propose a QoS architecture model that allows an application to inform the network of its traffic profile and to request a particular type of service to support its bandwidth and delay requirements. The application requires consistent and dedicated bandwidth end to end. Which QoS architecture model meets these requirements?

- A. DiffServ
- B. LLQ
- C. WRED
- D. IntServ

Answer: D

NEW QUESTION 7

Which two best practices must be followed when designing an out-of-band management network? (Choose two.)

- A. Enforce access control
- B. Facilitate network integration
- C. Back up data using the management network

- D. Ensure that the management network is a backup to the data network
- E. Ensure network isolation

Answer: AE

NEW QUESTION 8

Which method will filter routes between EIGRP neighbors within the same autonomous system?

- A. distribute-list
- B. policy-based routing
- C. leak-map
- D. route tagging

Answer: A

NEW QUESTION 9

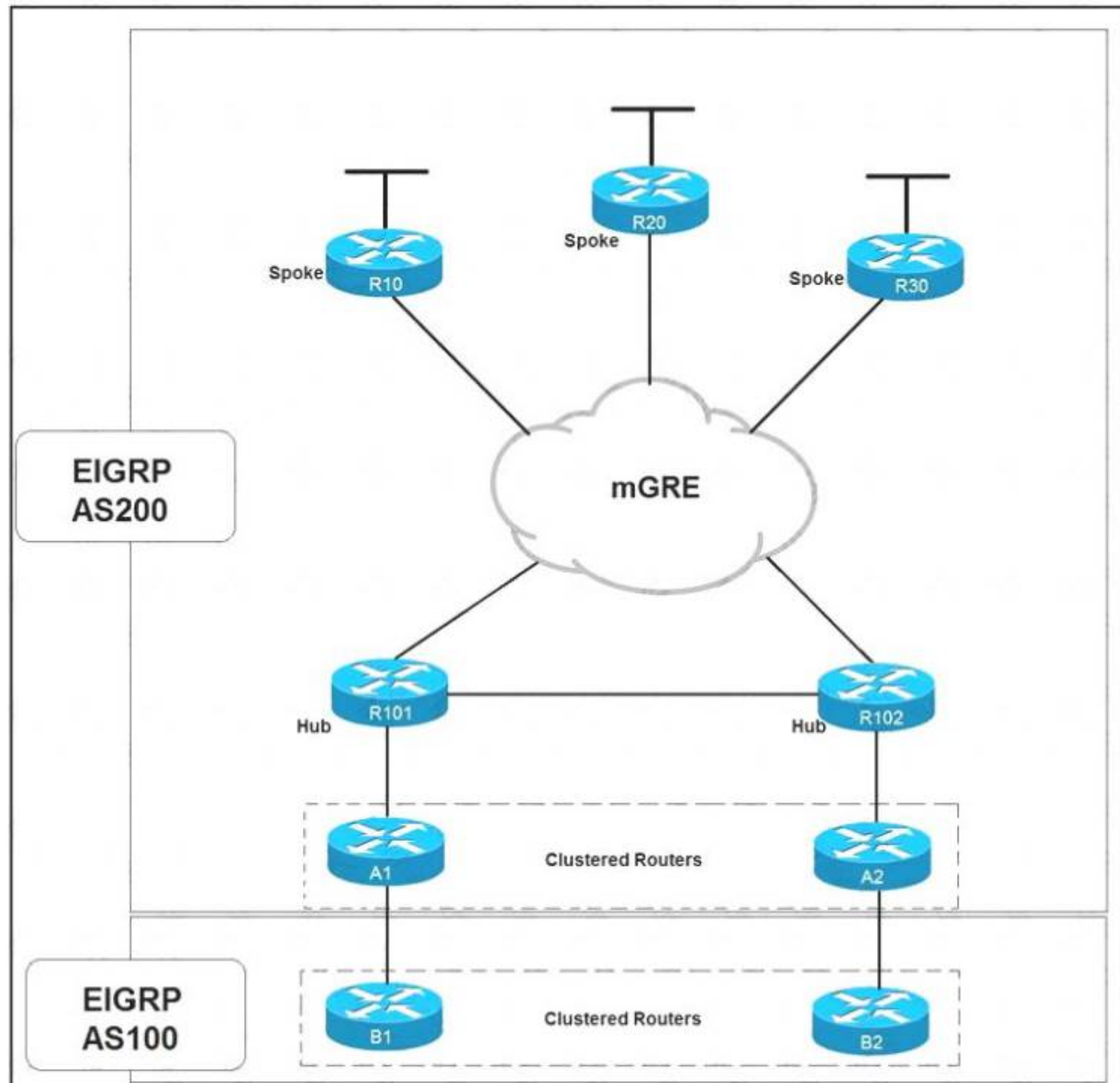
When designing interdomain multicast, which two protocols are deployed to achieve communication between multicast sources and receivers? (Choose two.)

- A. IGMPv2
- B. BIDIR-PIM
- C. MP-BGP
- D. MSDP
- E. MLD

Answer: CD

NEW QUESTION 10

Refer to the exhibit.



Which solution decreases the EIGRP convergence time?

- A. Enable subsecond timers
- B. Increase the hold time value
- C. Increase the dead timer value
- D. Enable stub routing on the spokes

Answer: D

NEW QUESTION 10

Which two statements describe source trees in a multicast environment? (Choose two.)

- A. Source trees guarantee the minimum amount of network latency for forwarding multicast traffic
- B. Source trees create an optimal path between the source and the receivers
- C. Source trees use a single common root placed at some chosen point in the network
- D. Source trees can introduce latency in packet delivery
- E. Source trees can create suboptimal paths between the source and the receivers

Answer: AB

NEW QUESTION 12

A company with multiple service providers wants to speed up BGP convergence time in the event a failure occurs with their primary link. Which approach achieves this goal and does not impact router CPU utilization?

- A. Utilize BFD and tune the multiplier to 50
- B. Lower the BGP hello interval
- C. Decrease the BGP keepalive timer
- D. Utilize BFD and keep the default BGP timers

Answer: C

NEW QUESTION 14

When IPsec VPNs are designed, what is a unique requirement if support for IP Multicast is required?

- A. encapsulation of traffic with GRE or VTI
- B. IPsec forwarding using transport mode
- C. additional bandwidth for headend
- D. IPsec forwarding using tunnel mode

Answer: A

NEW QUESTION 18

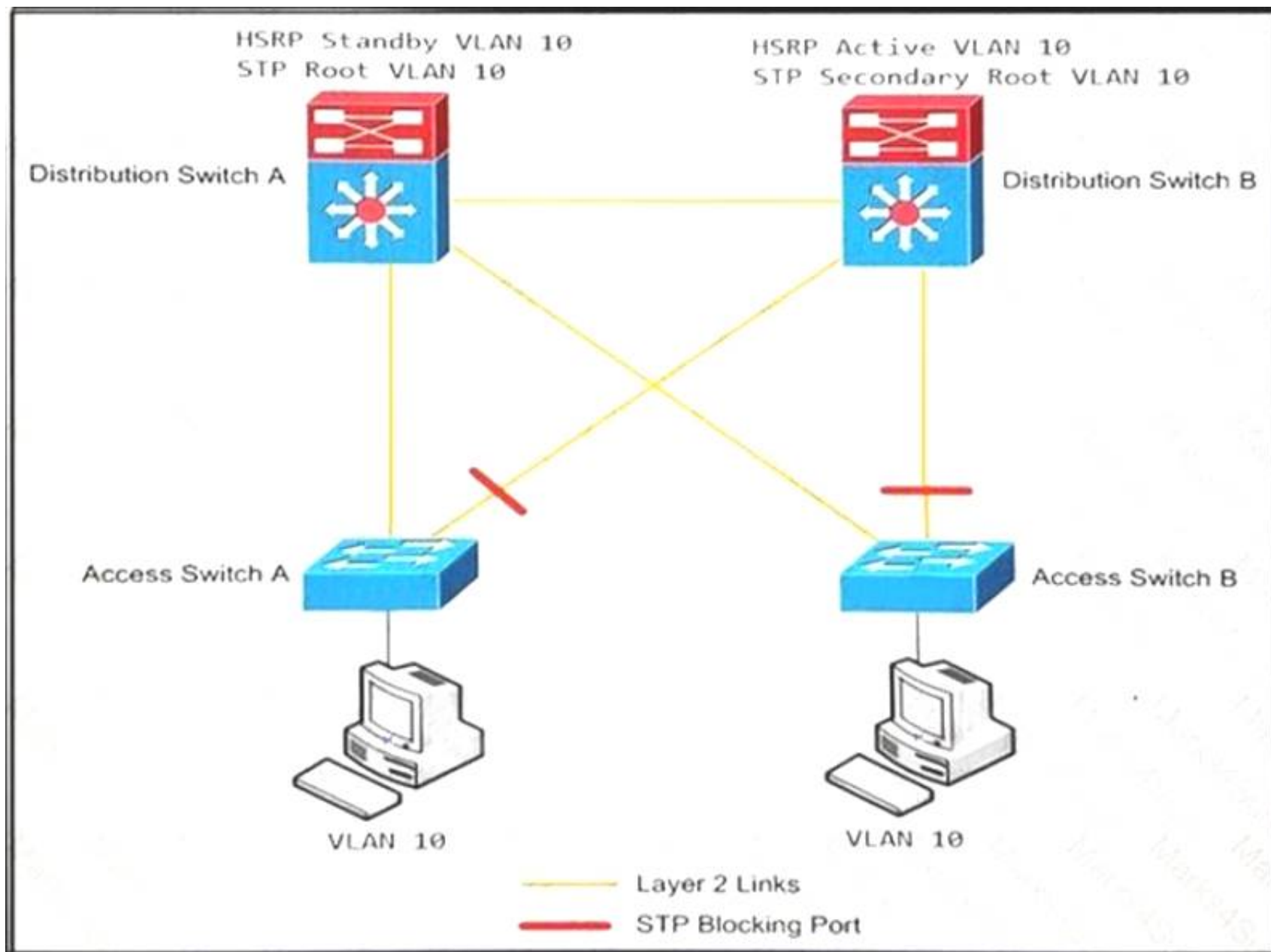
An infrastructure team is concerned about the shared memory utilization of a device, and for this reason, they need to monitor the device state. Which solution limits impact on the device and provides the required data?

- A. IPFIX
- B. static telemetry
- C. on-change subscription
- D. periodic subscription

Answer: A

NEW QUESTION 20

Refer to the exhibit.



An engineer must optimize the traffic flow of the network. Which change provides a more efficient design between the access and the distribution layer?

- A. Add a link between access switch A and access switch B
- B. Reconfigure the distribution switch A to become the HSRP Active
- C. Change the link between distribution switch A and distribution switch B to be a routed link
- D. Create an EtherChannel link between distribution switch A and distribution switch B

Answer: B

NEW QUESTION 25

An engineer is designing an enterprise campus network. The LAN infrastructure consists of switches from multiple vendors, and Spanning Tree must be used as a Layer 2 loop prevention mechanism. All configured VLANs must be grouped in two SIP instances. Which standards-based Spanning Tree technology supports this design solution?

- A. MSTP
- B. RSTP
- C. Rapid PVST
- D. STP

Answer: A

NEW QUESTION 30

Which NETCONF operation creates filtering that is specific to the session notifications?

- A. <create-subscription>
- B. <commit>
- C. <notification>
- D. <logging>

Answer: A

NEW QUESTION 34

A company is using OSPF between its HQ location and a branch office. HQ is assigned area 0 and the branch office is assigned area 1. The company purchases a second branch office, but due to circuit delays to HQ, it decides to connect the new branch office to the existing branch office as a temporary measure. The new branch office is assigned area 2. Which OSPF configuration enables all three locations to exchange routes?

- A. The existing branch office must be configured as a stub area
- B. A virtual link must be configured between the new branch office and HQ
- C. A sham link must be configured between the new branch office and HQ
- D. The new branch office must be configured as a stub area

Answer: B

NEW QUESTION 39

.....

Thank You for Trying Our Product

We offer two products:

1st - We have Practice Tests Software with Actual Exam Questions

2nd - Questions and Answers in PDF Format

300-420 Practice Exam Features:

- * 300-420 Questions and Answers Updated Frequently
- * 300-420 Practice Questions Verified by Expert Senior Certified Staff
- * 300-420 Most Realistic Questions that Guarantee you a Pass on Your First Try
- * 300-420 Practice Test Questions in Multiple Choice Formats and Updates for 1 Year

100% Actual & Verified — Instant Download, Please Click
[Order The 300-420 Practice Test Here](#)