

## Exam Questions NSE4\_FGT-7.0

Fortinet NSE 4 - FortiOS 7.0

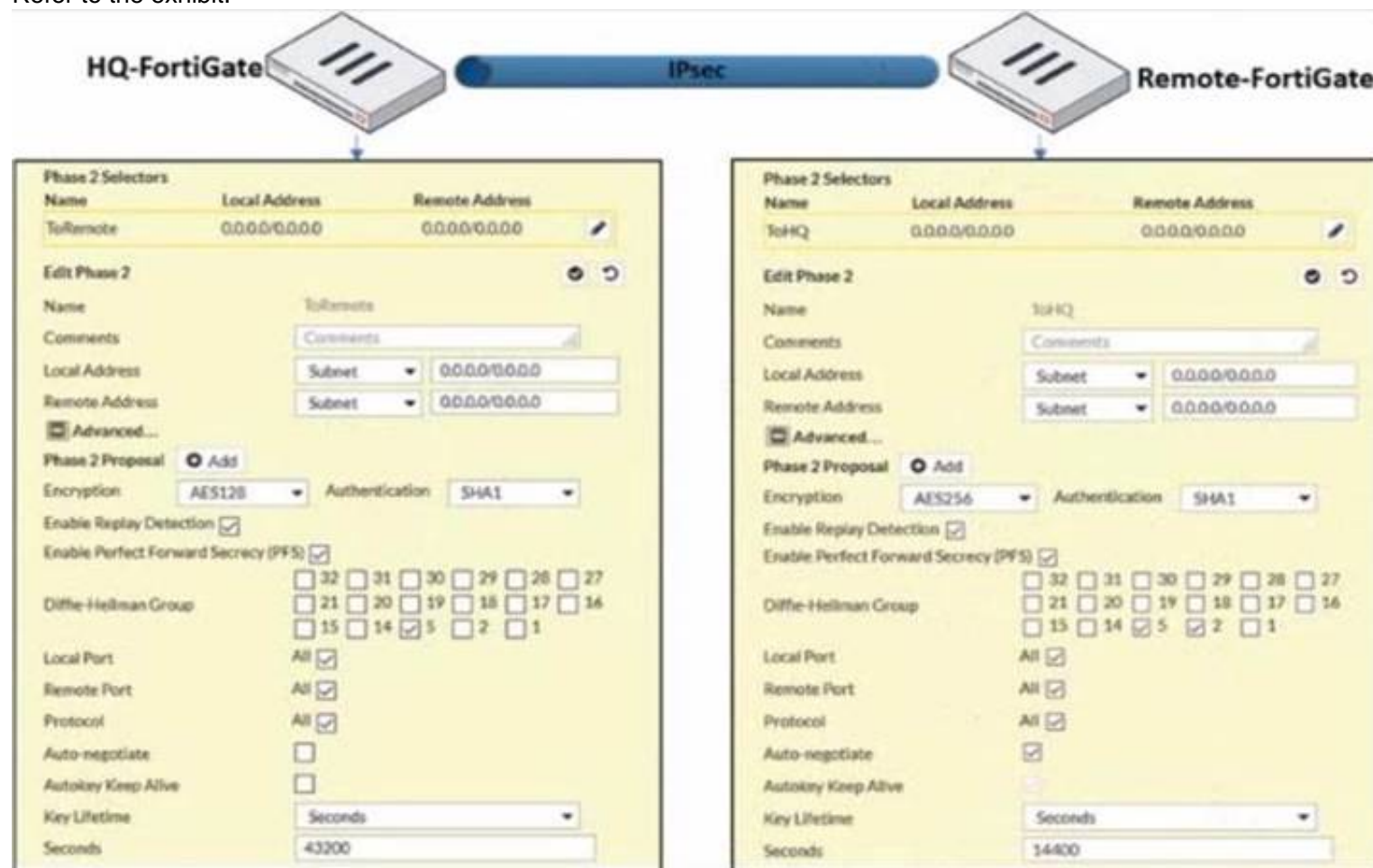
[https://www.2passeasy.com/dumps/NSE4\\_FGT-7.0/](https://www.2passeasy.com/dumps/NSE4_FGT-7.0/)



### NEW QUESTION 1

- (Exam Topic 1)

Refer to the exhibit.



A network administrator is troubleshooting an IPsec tunnel between two FortiGate devices. The administrator has determined that phase 1 status is up, but phase 2 fails to come up.

Based on the phase 2 configuration shown in the exhibit, what configuration change will bring phase 2 up?

- A. On HQ-FortiGate, enable Auto-negotiate.
- B. On Remote-FortiGate, set Seconds to 43200.
- C. On HQ-FortiGate, enable Diffie-Hellman Group 2.
- D. On HQ-FortiGate, set Encryption to AES256.

**Answer:** D

#### Explanation:

Reference: <https://docs.fortinet.com/document/fortigate/5.4.0/cookbook/168495>

Encryption and authentication algorithm needs to match in order for IPSEC to be successfully established.

### NEW QUESTION 2

- (Exam Topic 1)

Which two configuration settings are synchronized when FortiGate devices are in an active-active HA cluster? (Choose two.)

- A. FortiGuard web filter cache
- B. FortiGate hostname
- C. NTP
- D. DNS

**Answer:** CD

### NEW QUESTION 3

- (Exam Topic 1)

Which statement about video filtering on FortiGate is true?

- A. Full SSL Inspection is not required.
- B. It is available only on a proxy-based firewall policy.
- C. It inspects video files hosted on file sharing services.
- D. Video filtering FortiGuard categories are based on web filter FortiGuard categories.

**Answer:** B

#### Explanation:

Reference: <https://docs.fortinet.com/document/fortigate/7.0.0/new-features/190873/video-filtering>

### NEW QUESTION 4

- (Exam Topic 1)

Refer to the exhibit.

Username	Administrator	Change Password
Type	<div>Local User</div> <div>Match a user on a remote server group</div> <div>Match all users in a remote server group</div> <div>Use public key infrastructure (PKI) group</div>	
Comments	Write a comment... 0/255	
Administrator Profile	prof_admin	
Email Address	admin@xyz.com	
<input type="checkbox"/> SMS		
<input type="checkbox"/> Two-factor Authentication		
<input type="checkbox"/> Restrict login to trusted hosts		
<input type="checkbox"/> Restrict admin to guest account provisioning only		

The global settings on a FortiGate device must be changed to align with company security policies. What does the Administrator account need to access the FortiGate global settings?

- A. Change password
- B. Enable restrict access to trusted hosts
- C. Change Administrator profile
- D. Enable two-factor authentication

**Answer:** C

**Explanation:**

Reference: <https://kb.fortinet.com/kb/documentLink.do?externalID=FD34502>

#### NEW QUESTION 5

- (Exam Topic 1)

When configuring a firewall virtual wire pair policy, which following statement is true?

- A. Any number of virtual wire pairs can be included, as long as the policy traffic direction is the same.
- B. Only a single virtual wire pair can be included in each policy.
- C. Any number of virtual wire pairs can be included in each policy, regardless of the policy traffic direction settings.
- D. Exactly two virtual wire pairs need to be included in each policy.

**Answer:** A

**Explanation:**

Reference: <https://kb.fortinet.com/kb/documentLink.do?externalID=FD48690>

#### NEW QUESTION 6

- (Exam Topic 1)

Refer to the exhibits.

SSL-VPN Settings

Connection Settings ⓘ

Listen on Interface(s) port1 + ×

Listen on Port 10443

! Web mode access will be listening at <https://10.200.1.1:10443>

Redirect HTTP to SSL-VPN ☐

Restrict Access Allow access from any host Limit access to specific hosts

Idle Logout ☒

Inactive For 300 Seconds

Server Certificate Fortinet\_Factory

Require Client Certificate ☐

Tunnel Mode Client Settings ⓘ

Address Range Automatically assign addresses Specify custom IP ranges

! Tunnel users will receive IPs in the range of 10.212.134.200 - 10.212.134.210

DNS Server Same as client system DNS Specify

Specify WINS Servers ☐

Authentication/Portal Mapping ⓘ

+ Create New Edit Delete

Users/Groups	Portal
sslvpn	tunnel-access
All Other Users/Groups	full-access

Connection status

Connection: VPN

Server: https://10.200.1.1:1443/

Status: Connecting...

Duration: —

Bytes received: 0

Bytes sent: 0

Stop

The SSL VPN connection fails when a user attempts to connect to it. What should the user do to successfully connect to SSL VPN?

- A. Change the SSL VPN port on the client.
- B. Change the Server IP address.
- C. Change the idle-timeout.
- D. Change the SSL VPN portal to the tunnel.

**Answer:** A

**Explanation:**

Reference: <https://docs.fortinet.com/document/fortigate/5.4.0/cookbook/150494>

**NEW QUESTION 7**

- (Exam Topic 1)

An administrator does not want to report the logon events of service accounts to FortiGate. What setting on the collector agent is required to achieve this?

- A. Add the support of NTLM authentication.
- B. Add user accounts to Active Directory (AD).
- C. Add user accounts to the FortiGate group filter.
- D. Add user accounts to the Ignore User List.

**Answer:** D

**Explanation:**

Reference: <https://kb.fortinet.com/kb/documentLink.do?externalID=FD38828>

#### NEW QUESTION 8

- (Exam Topic 1)

Which two statements are true about the FGCP protocol? (Choose two.)

- A. Not used when FortiGate is in Transparent mode
- B. Elects the primary FortiGate device
- C. Runs only over the heartbeat links
- D. Is used to discover FortiGate devices in different HA groups

**Answer:** BC

**Explanation:**

Reference:

<https://docs.fortinet.com/document/fortigate/6.4.0/ports-and-protocols/564712/fgcp-fortigate-clustering-protocol>

#### NEW QUESTION 9

- (Exam Topic 1)

An administrator has configured the following settings:

```
config system settings
set ses-denied-traffic enable
end
config system global
set block-session-timer 30
end
```

What are the two results of this configuration? (Choose two.)

- A. Device detection on all interfaces is enforced for 30 minutes.
- B. Denied users are blocked for 30 minutes.
- C. A session for denied traffic is created.
- D. The number of logs generated by denied traffic is reduced.

**Answer:** CD

**Explanation:**

Reference: <https://kb.fortinet.com/kb/documentLink.do?externalID=FD46328>

#### NEW QUESTION 10

- (Exam Topic 1)

How does FortiGate act when using SSL VPN in web mode?

- A. FortiGate acts as an FDS server.
- B. FortiGate acts as an HTTP reverse proxy.
- C. FortiGate acts as DNS server.
- D. FortiGate acts as router.

**Answer:** B

**Explanation:**

Reference:

[https://pub.kb.fortinet.com/ksmcontent/Fortinet-Public/current/Fortigate\\_v4.0MR3/fortigate-sslvpn-40-mr3.pdf](https://pub.kb.fortinet.com/ksmcontent/Fortinet-Public/current/Fortigate_v4.0MR3/fortigate-sslvpn-40-mr3.pdf)

#### NEW QUESTION 10

- (Exam Topic 1)

Refer to the exhibits.

Exhibit A.



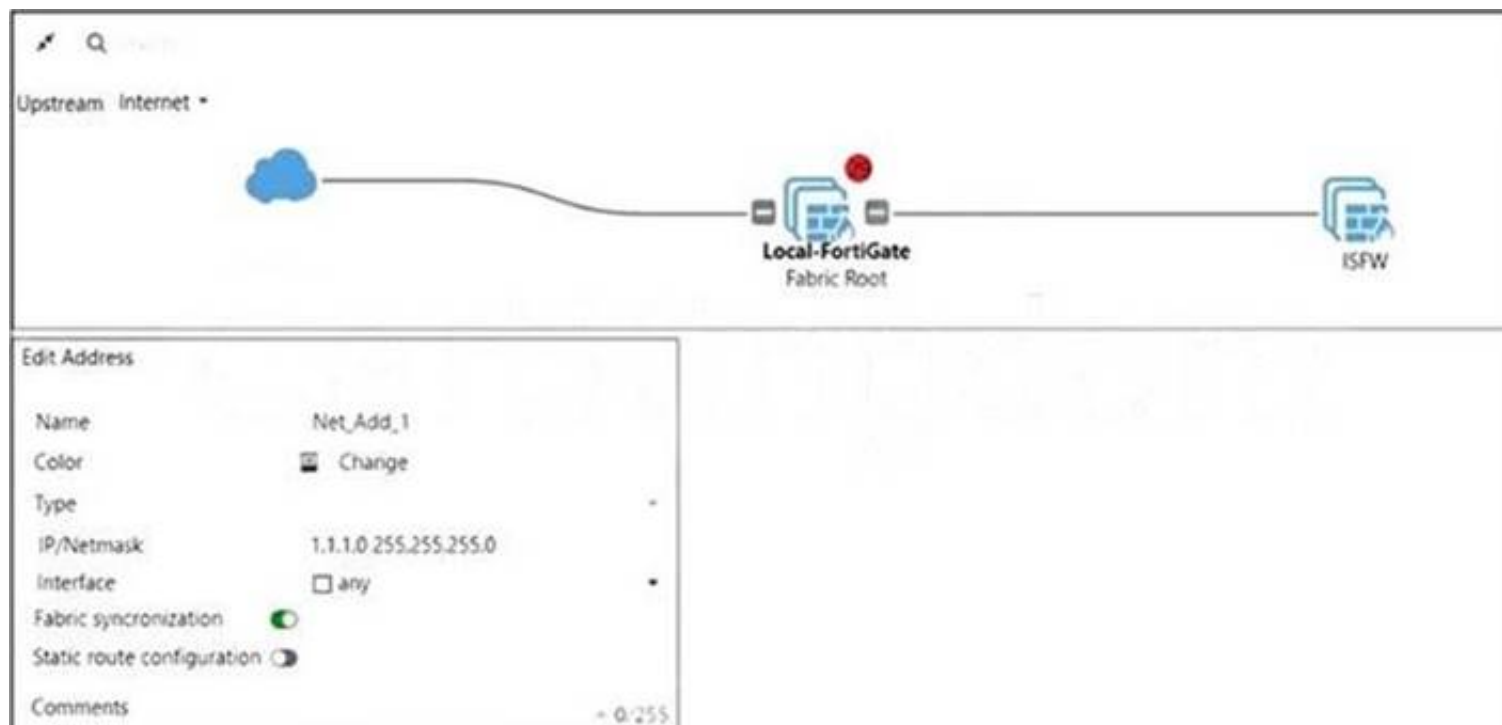


Exhibit B.



An administrator creates a new address object on the root FortiGate (Local-FortiGate) in the security fabric. After synchronization, this object is not available on the downstream FortiGate (ISFW).

What must the administrator do to synchronize the address object?

- A. Change the csf setting on Local-FortiGate (root) to sec configuration-sync local.
- B. Change the csf setting on ISFW (downstream) to sec configuracion-sync local.
- C. Change the csf setting on Local-FortiGate (root) to sec fabric-objecc-unificacion defaultc.
- D. Change the csf setting on ISFW (downstream) to sec fabric-objecc-unificacion defaultc.

**Answer:** A

**Explanation:**

Reference: <https://kb.fortinet.com/kb/documentLink.do?externalID=FD43820>

#### NEW QUESTION 15

- (Exam Topic 1)

By default, FortiGate is configured to use HTTPS when performing live web filtering with FortiGuard servers. Which CLI command will cause FortiGate to use an unreliable protocol to communicate with FortiGuard servers for live web filtering?

- A. set fortiguard-anycast disable
- B. set webfilter-force-off disable
- C. set webfilter-cache disable
- D. set protocol tcp

**Answer:** A

**Explanation:**

Reference: <https://kb.fortinet.com/kb/documentLink.do?externalID=FD48294>

#### NEW QUESTION 16

- (Exam Topic 1)

Which two statements about SSL VPN between two FortiGate devices are true? (Choose two.)

- A. The client FortiGate requires a client certificate signed by the CA on the server FortiGate.
- B. The client FortiGate requires a manually added route to remote subnets.
- C. The client FortiGate uses the SSL VPN tunnel interface type to connect SSL VPN.
- D. Server FortiGate requires a CA certificate to verify the client FortiGate certificate.

**Answer:** CD

**Explanation:**

Reference:

<https://docs.fortinet.com/document/fortigate/6.2.9/cookbook/266506/ssl-vpn-with-certificate-authentication>

#### NEW QUESTION 17

- (Exam Topic 2)

Refer to the exhibit.



In the network shown in the exhibit, the web client cannot connect to the HTTP web server. The administrator runs the FortiGate built-in sniffer and gets the output as shown in the exhibit.

What should the administrator do next to troubleshoot the problem?

- A. Run a sniffer on the web server.
- B. Capture the traffic using an external sniffer connected to port1.
- C. Execute another sniffer in the FortiGate, this time with the filter "host 10.0.1.10"
- D. Execute a debug flow.

Answer: D

#### NEW QUESTION 20

- (Exam Topic 2)

An administrator is configuring an Ipsec between site A and siteB. The Remotes Gateway setting in both sites has been configured as Static IP Address. For site A, the local quick mode selector is 192.16.1.0/24 and the remote quick mode selector is 192.16.2.0/24. How must the administrator configure the local quick mode selector for site B?

- A. 192.168.3.0/24
- B. 192.168.2.0/24
- C. 192.168.1.0/24
- D. 192.168.0.0/8

Answer: B

#### NEW QUESTION 22

- (Exam Topic 2)

Which two statements are correct regarding FortiGate FSSO agentless polling mode? (Choose two.)

- A. FortiGate points the collector agent to use a remote LDAP server.
- B. FortiGate uses the AD server as the collector agent.
- C. FortiGate uses the SMB protocol to read the event viewer logs from the DCs.
- D. FortiGate queries AD by using the LDAP to retrieve user group information.

Answer: CD

Explanation:

Fortigate Infrastructure 7.0 Study Guide P.272-273 <https://kb.fortinet.com/kb/documentLink.do?externalID=FD47732>

#### NEW QUESTION 26

- (Exam Topic 2)

Examine this PAC file configuration.

```
function FindProxyForURL (url, host) {
    if (shExpMatch (url, ".*fortinet.com/*")) {
        return "DIRECT";
    }
    if (isInNet (host, "172.25.120.0", "255.255.255.0")) {
        return "PROXY altproxy.corp.com: 8060";
    }
    return "PROXY proxy.corp.com: 8090";
}
```

Which of the following statements are true? (Choose two.)

- A. Browsers can be configured to retrieve this PAC file from the FortiGate.
- B. Any web request to the 172.25.120.0/24 subnet is allowed to bypass the proxy.
- C. All requests not made to Fortinet.com or the 172.25.120.0/24 subnet, have to go through altproxy.corp.com: 8060.
- D. Any web request fortinet.com is allowed to bypass the proxy.

**Answer:** AD

#### NEW QUESTION 28

- (Exam Topic 2)

Which of the following are purposes of NAT traversal in IPsec? (Choose two.)

- A. To detect intermediary NAT devices in the tunnel path.
- B. To dynamically change phase 1 negotiation mode aggressive mode.
- C. To encapsulation ESP packets in UDP packets using port 4500.
- D. To force a new DH exchange with each phase 2 rekey.

**Answer:** AC

#### NEW QUESTION 31

- (Exam Topic 2)

Refer to the exhibit.



Which contains a network diagram and routing table output. The Student is unable to access Webserver.  
 What is the cause of the problem and what is the solution for the problem?

- A. The first packet sent from Student failed the RPF check.This issue can be resolved by adding a static route to 10.0.4.0/24 through wan1.
- B. The first reply packet for Student failed the RPF check.This issue can be resolved by adding a static route to 10.0.4.0/24 through wan1.
- C. The first reply packet for Student failed the RPF check.This issue can be resolved by adding a static route to 203.0.114.24/32 through port3.
- D. The first packet sent from Student failed the RPF check.This issue can be resolved by adding a static route to 203.0.114.24/32 through port3.

**Answer:** D

#### NEW QUESTION 34

- (Exam Topic 2)

You have enabled logging on your FortiGate device for Event logs and all Security logs, and you have set up logging to use the FortiGate local disk.  
 What is the default behavior when the local disk is full?

- A. Logs are overwritten and the only warning is issued when log disk usage reaches the threshold of 95%.
- B. No new log is recorded until you manually clear logs from the local disk.
- C. Logs are overwritten and the first warning is issued when log disk usage reaches the threshold of 75%.
- D. No new log is recorded after the warning is issued when log disk usage reaches the threshold of 95%.

**Answer:** C

#### Explanation:

Reference: <https://docs.fortinet.com/document/fortigate/6.4.0/cli-reference/462620/log-disk-setting>

#### NEW QUESTION 37

- (Exam Topic 2)

FortiGate is configured as a policy-based next-generation firewall (NGFW) and is applying web filtering and application control directly on the security policy.  
 Which two other security profiles can you apply to the security policy? (Choose two.)

- A. Antivirus scanning
- B. File filter
- C. DNS filter
- D. Intrusion prevention

**Answer:** AD

#### NEW QUESTION 41



- (Exam Topic 2)

Which three pieces of information does FortiGate use to identify the hostname of the SSL server when SSL certificate inspection is enabled? (Choose three.)

- A. The subject field in the server certificate
- B. The serial number in the server certificate
- C. The server name indication (SNI) extension in the client hello message
- D. The subject alternative name (SAN) field in the server certificate
- E. The host field in the HTTP header

**Answer:** ACD

**Explanation:**

Reference: <https://checkthefirewall.com/blogs/fortinet/ssl-inspection>

#### NEW QUESTION 45

- (Exam Topic 2)

Which two statements are true about the RPF check? (Choose two.)

- A. The RPF check is run on the first sent packet of any new session.
- B. The RPF check is run on the first reply packet of any new session.
- C. The RPF check is run on the first sent and reply packet of any new session.
- D. RPF is a mechanism that protects FortiGate and your network from IP spoofing attacks.

**Answer:** AD

**Explanation:**

Reference: <https://www.programmersought.com/article/16383871634/>

#### NEW QUESTION 49

- (Exam Topic 2)

Which feature in the Security Fabric takes one or more actions based on event triggers?

- A. Fabric Connectors
- B. Automation Stitches
- C. Security Rating
- D. Logical Topology

**Answer:** B

**Explanation:**

Reference: <https://docs.fortinet.com/document/fortigate/6.2.0/cookbook/286973/fortinet-security-fabric>

#### NEW QUESTION 52

- (Exam Topic 2)

Refer to the exhibit, which contains a session diagnostic output.

```
session info: proto=17 proto_state=01 duration=254 expire=179 timeout=0 flags=00000000 socktype=0
sockport=0 av_idx=0 use=3
origin-shaper=
reply-shaper=
per_ip_shaper=
class_id=0 ha_id=0 policy_dir=0 tunnel=/ helper=dns-udp vlan_cos=0/255
state=log may_dirty f00 log-start
statistic(bytes/packets/allow_err): org=1420/22/1 reply=5678/22/1 tuples=2
tx speed(Bps/kbps): 5/0 rx speed(Bps/kbps): 22/0
origin -> sink: org pre->post, reply pre->post dev=5->3/3 ->5 gwy=10.200.1.254/10.0.1.200
hook=post dir=org act=snat 10.0.1.200:2486->208.91.112.53:53(10.200.1.1:62902)
hook=pre dir=reply act=dnat 208.91.112.53:53 -> 10.200.1.1:62902(10.0.1.200:2486)
misc=0 policy_id=3 auth_info=0 chk_client_info=0 vd=0
serial=0001fc1e tos=ff/ff app_list=0 app=0 url_cat=0
rpd_b_link_id= 00000000 rpd_b_svc_id=0 ngfwid=n/a
npu_state=0x040000
```

Which statement is true about the session diagnostic output?

- A. The session is a UDP unidirectional state.
- B. The session is in TCP ESTABLISHED state.
- C. The session is a bidirectional UDP connection.
- D. The session is a bidirectional TCP connection.

**Answer:** C

#### NEW QUESTION 53

- (Exam Topic 2)

Which two statements are correct about a software switch on FortiGate? (Choose two.)

- A. It can be configured only when FortiGate is operating in NAT mode
- B. Can act as a Layer 2 switch as well as a Layer 3 router
- C. All interfaces in the software switch share the same IP address
- D. It can group only physical interfaces

**Answer:** AC

#### NEW QUESTION 55

- (Exam Topic 2)

The HTTP inspection process in web filtering follows a specific order when multiple features are enabled in the web filter profile. What order must FortiGate use when the web filter profile has features enabled, such as safe search?

- A. DNS-based web filter and proxy-based web filter
- B. Static URL filter, FortiGuard category filter, and advanced filters
- C. Static domain filter, SSL inspection filter, and external connectors filters
- D. FortiGuard category filter and rating filter

**Answer:** B

#### Explanation:

Reference: [https://fortinet121.rssing.com/chan-67705148/all\\_p1.html](https://fortinet121.rssing.com/chan-67705148/all_p1.html)

#### NEW QUESTION 59

- (Exam Topic 2)

Which two statements about IPsec authentication on FortiGate are correct? (Choose two.)

- A. For a stronger authentication, you can also enable extended authentication (XAuth) to request the remote peer to provide a username and password
- B. FortiGate supports pre-shared key and signature as authentication methods.
- C. Enabling XAuth results in a faster authentication because fewer packets are exchanged.
- D. A certificate is not required on the remote peer when you set the signature as the authentication method.

**Answer:** AB

#### Explanation:

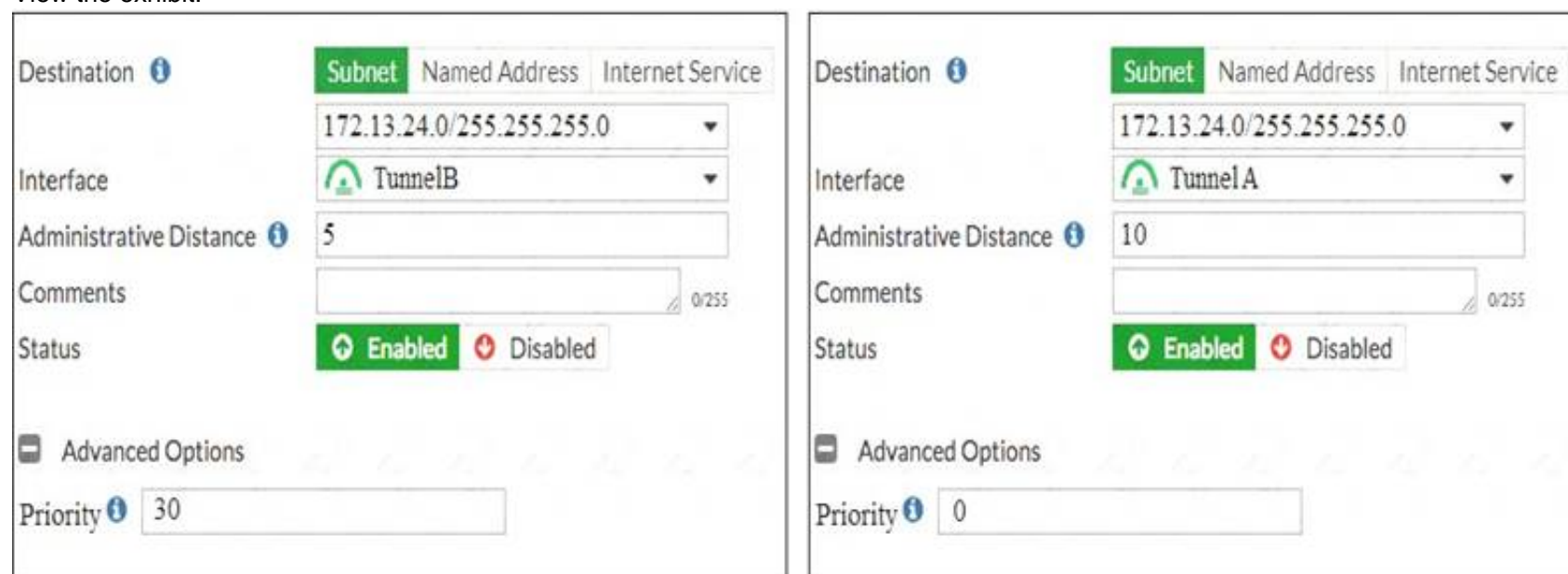
Reference:

<https://docs.fortinet.com/document/fortigate/6.2.0/cookbook/913287/ipsec-vpn-authenticating-a-remote-fortigate>

#### NEW QUESTION 62

- (Exam Topic 2)

View the exhibit.



Which of the following statements are correct? (Choose two.)

- A. This setup requires at least two firewall policies with the action set to IPsec.
- B. Dead peer detection must be disabled to support this type of IPsec setup.
- C. The TunnelB route is the primary route for reaching the remote sit
- D. The TunnelA route is used only if the TunnelB VPN is down.
- E. This is a redundant IPsec setup.

**Answer:** CD

#### NEW QUESTION 63

- (Exam Topic 2)

What is the effect of enabling auto-negotiate on the phase 2 configuration of an IPsec tunnel?

- A. FortiGate automatically negotiates different local and remote addresses with the remote peer.
- B. FortiGate automatically negotiates a new security association after the existing security association expires.
- C. FortiGate automatically negotiates different encryption and authentication algorithms with the remote peer.
- D. FortiGate automatically brings up the IPsec tunnel and keeps it up, regardless of activity on the IPsec tunnel.

**Answer:** D

**Explanation:**

<https://kb.fortinet.com/kb/documentLink.do?externalID=12069>

**NEW QUESTION 65**

- (Exam Topic 2)

If Internet Service is already selected as Destination in a firewall policy, which other configuration objects can be selected to the Destination field of a firewall policy?

A User or User Group

A. IP address

B. No other object can be added

C. FQDN address

**Answer: B**

**Explanation:**

Reference:

<https://docs.fortinet.com/document/fortigate/6.2.5/cookbook/179236/using-internet-service-in-policy>

**NEW QUESTION 66**

- (Exam Topic 2)

Which two types of traffic are managed only by the management VDOM? (Choose two.)

A. FortiGuard web filter queries

B. PKI

C. Traffic shaping

D. DNS

**Answer: AD**

**NEW QUESTION 70**

- (Exam Topic 2)

Exhibit:



```
Fortigate # show authentication rule
config authentication rule
    edit "NTLM_rule"
        set srcaddr "all"
        set ip-based disable
        set web-auth-cookie enable
    next
end
```

Refer to the exhibit to view the authentication rule configuration. In this scenario, which statement is true?

A. IP-based authentication is enabled

B. Route-based authentication is enabled

C. Session-based authentication is enabled.

D. Policy-based authentication is enabled

**Answer: C**

**Explanation:**

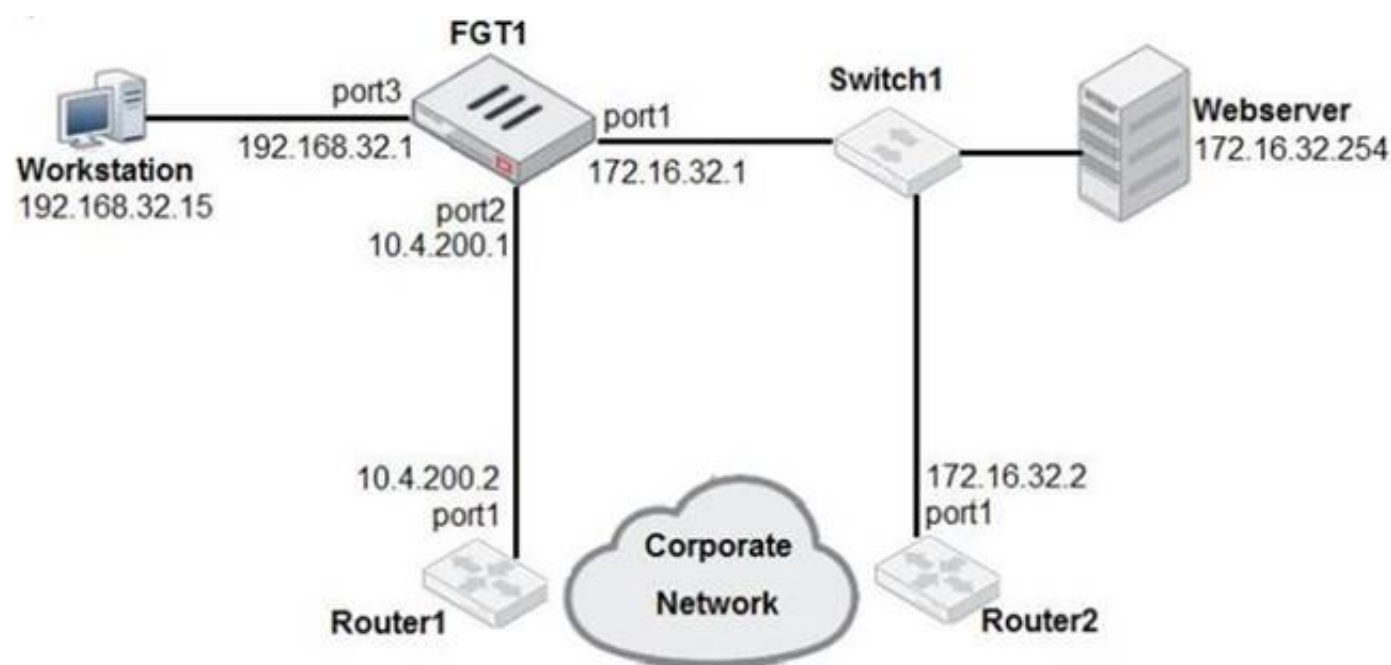
Reference: <https://kb.fortinet.com/kb/documentLink.do?externalID=FD45387>

**NEW QUESTION 72**

- (Exam Topic 2)

Examine the network diagram shown in the exhibit, then answer the following question:





Which one of the following routes is the best candidate route for FGT1 to route traffic from the Workstation to the Web server?

- A. 172.16.0.0/16 [50/0] via 10.4.200.2, port2 [5/0]
- B. 0.0.0.0/0 [20/0] via 10.4.200.2, port2
- C. 10.4.200.0/30 is directly connected, port2
- D. 172.16.32.0/24 is directly connected, port1

Answer: D

#### NEW QUESTION 77

- (Exam Topic 2)

Which two protocol options are available on the CLI but not on the GUI when configuring an SD-WAN Performance SLA? (Choose two.)

- A. DNS
- B. ping
- C. udp-echo
- D. TWAMP

Answer: CD

#### NEW QUESTION 78

- (Exam Topic 2)

Refer to the exhibit.

```

1: date=2020-08-14 time=06:28:24 logid= "0316013056" type= "utm" subtype= "webfilter"
eventtype= "ftgd_blk" level= "warning" vd= "root" eventtime= 1597343304867252750
policyid=2 sessionid=83212 srcip=10.0.1.10 srcport=53742 srcintf= "port3" srcintfrole=
"undefined" dstip=159.65.216.232 dstport=443 dstintf= "port1" dstintfrole= "wan" proto=6
service= "HTTPS" hostname= "etp-experiment-1.dummytracker.org" profile= "default"
action= "blocked" reqtype= "direct" url= "https://etp-experiment-1.dummytracker.org/"
sentbyte=517 rcvdbyte=0 direction= "outgoing" msg= "URL belongs to a denied category in
policy" method= "domain" cat=26 catdesc= "Malicious Websites" crscore=30 craction=
4194304 crlevel= "high"
  
```

Based on the raw log, which two statements are correct? (Choose two.)

- A. Traffic is blocked because Action is set to DENY in the firewall policy.
- B. Traffic belongs to the root VDOM.
- C. This is a security log.
- D. Log severity is set to error on FortiGate.

Answer: AC

#### NEW QUESTION 79

- (Exam Topic 2)

Which three security features require the intrusion prevention system (IPS) engine to function? (Choose three.)

- A. Web filter in flow-based inspection
- B. Antivirus in flow-based inspection
- C. DNS filter
- D. Web application firewall
- E. Application control

Answer: ABE

#### NEW QUESTION 80

- (Exam Topic 2)

What types of traffic and attacks can be blocked by a web application firewall (WAF) profile? (Choose three.)



- A. Traffic to botnetservers
- B. Traffic to inappropriate web sites
- C. Server information disclosure attacks
- D. Credit card data leaks
- E. SQL injection attacks

**Answer:** CDE

#### NEW QUESTION 85

- (Exam Topic 2)

Which Security rating scorecard helps identify configuration weakness and best practice violations in your network?

- A. Fabric Coverage
- B. Automated Response
- C. Security Posture
- D. Optimization

**Answer:** C

#### Explanation:

Reference:

<https://www.fortinet.com/content/dam/fortinet/assets/support/fortinet-recommended-security-bestpractices.pdf>

#### NEW QUESTION 86

- (Exam Topic 2)

What is the primary FortiGate election process when the HA override setting is disabled?

- A. Connected monitored ports > System uptime > Priority > FortiGate Serial number
- B. Connected monitored ports > HA uptime > Priority > FortiGate Serial number
- C. Connected monitored ports > Priority > HA uptime > FortiGate Serial number
- D. Connected monitored ports > Priority > System uptime > FortiGate Serial number

**Answer:** B

#### Explanation:

Reference: <http://myitmicroblog.blogspot.com/2018/11/what-should-you-know-about-ha-override.html>

#### NEW QUESTION 91

- (Exam Topic 2)

Refer to the exhibit.

config firewall policy	FIREWALL POLICIES	config firewall
<pre>edit 1   set name "INTERNET"   set uuid b11ac58c-791b-51e7-4600-12f829a689d9   set srcintf "port3"   set dstintf "port1"   set srcaddr "LOCAL_SUBNET"   set dstaddr "all"   set action accept   set schedule "always"   set service "ALL"   set utm-status enable   set inspection-mode proxy   set http-policy-redirect enable   set ssl-ssh-profile "certificate-inspection"   set av-profile "default"   set logtraffic all   set logtraffic-start enable   set ippool enable   set poolname "ProxyPool"   set nat enable next end</pre>		<pre>edit 1   set uuid 6491d126-c790-51ea-13f9-4ed04b543abe   set proxy transparent-web   set srcintf "port3"   set dstintf "port1"   set srcaddr "all"   set dstaddr "EICAR"   set service "webproxy"   set action accept   set schedule "always"   set logtraffic all   set utm-status enable   set ssl-ssh-profile "certificate-inspection"   set av-profile "default" next edit 2   set uuid 6a1c74c6-c794-51ea-e646-4f70ae2bc5f9   set proxy transparent-web   set srcintf "port2"   set dstintf "port1"   set srcaddr "all"   set dstaddr "all"   set service "webproxy"   set action accept   set status disable   set schedule "always"   set logtraffic disable   set ssl-ssh-profile "certificate-inspection" next edit 3   set uuid 818fb8b6-c797-51ea-d848-a7c2952ceea9   set proxy transparent-web   set srcintf "port3"   set dstintf "port1"   set srcaddr "all"   set dstaddr "all"   set service "webproxy"   set action accept   set status disable   set schedule "always"   set logtraffic all   set utm-status enable   set ssl-ssh-profile "certificate-inspection"   set av-profile "default" next end</pre>
<pre>config firewall proxy-address edit "EICAR"   set uuid 5a24bdaa-c792-51ea-2c89-a9f79e2bdc96   set type host-regex   set host-regex ".*eicar\\.org" next end</pre>	PROXY ADDRESS	

The exhibit shows a CLI output of firewall policies, proxy policies, and proxy addresses.  
How does FortiGate process the traffic sent to http://www.fortinet.com?

- A. Traffic will be redirected to the transparent proxy and it will be allowed by proxy policy ID 3.
- B. Traffic will not be redirected to the transparent proxy and it will be allowed by firewall policy ID 1.
- C. Traffic will be redirected to the transparent proxy and It will be allowed by proxy policy ID 1.
- D. Traffic will be redirected to the transparent proxy and it will be denied by the proxy implicit deny policy.

Answer: D

#### NEW QUESTION 94

- (Exam Topic 2)

Which downstream FortiGate VDOM is used to join the Security Fabric when split-task VDOM is enabled on all FortiGate devices?

- A. Root VDOM
- B. FG-traffic VDOM
- C. Customer VDOM
- D. Global VDOM

Answer: A

#### NEW QUESTION 99

- (Exam Topic 2)

Which two statements are true about collector agent advanced mode? (Choose two.)

- A. Advanced mode uses Windows convention—NetBios: Domain\Username.
- B. FortiGate can be configured as an LDAP client and group filters can be configured on FortiGate
- C. Advanced mode supports nested or inherited groups
- D. Security profiles can be applied only to user groups, not individual users.

Answer: BC

#### Explanation:

Reference: <https://docs.fortinet.com/document/fortigate/6.0.0/handbook/482937/agent-based-fsso>

#### NEW QUESTION 104

- (Exam Topic 2)

Which statement regarding the firewall policy authentication timeout is true?

- A. It is an idle timeout
- B. The FortiGate considers a user to be “idle” if it does not see any packets coming from the user’s source IP.
- C. It is a hard timeout
- D. The FortiGate removes the temporary policy for a user’s source IP address after this timer has expired.
- E. It is an idle timeout
- F. The FortiGate considers a user to be “idle” if it does not see any packets coming from the user’s source MAC.
- G. It is a hard timeout
- H. The FortiGate removes the temporary policy for a user’s source MAC address after this timer has expired.

**Answer:** A

#### NEW QUESTION 105

- (Exam Topic 2)

What is the limitation of using a URL list and application control on the same firewall policy, in NGFW policy-based mode?

- A. It limits the scope of application control to the browser-based technology category only.
- B. It limits the scope of application control to scan application traffic based on application category only.
- C. It limits the scope of application control to scan application traffic using parent signatures only
- D. It limits the scope of application control to scan application traffic on DNS protocol only.

**Answer:** B

#### NEW QUESTION 106

- (Exam Topic 2)

What is the limitation of using a URL list and application control on the same firewall policy, in NGFW policy-based mode?

- A. It limits the scanning of application traffic to the DNS protocol only.
- B. It limits the scanning of application traffic to use parent signatures only.
- C. It limits the scanning of application traffic to the browser-based technology category only.
- D. It limits the scanning of application traffic to the application category only.

**Answer:** C

#### NEW QUESTION 109

- (Exam Topic 2)

Which of the following statements correctly describes FortiGate’s route lookup behavior when searching for a suitable gateway? (Choose two)

- A. Lookup is done on the first packet from the session originator
- B. Lookup is done on the last packet sent from the responder
- C. Lookup is done on every packet, regardless of direction
- D. Lookup is done on the trust reply packet from the responder

**Answer:** AD

#### NEW QUESTION 110

- (Exam Topic 2)

Which scanning technique on FortiGate can be enabled only on the CLI?

- A. Heuristics scan
- B. Trojan scan
- C. Antivirus scan
- D. Ransomware scan

**Answer:** A

#### Explanation:

Reference: <https://docs.fortinet.com/document/fortigate/6.0.0/handbook/567568/enabling-scanning>

#### NEW QUESTION 114

- (Exam Topic 2)

Which three statements about security associations (SA) in IPsec are correct? (Choose three.)

- A. Phase 2 SAs are used for encrypting and decrypting the data exchanged through the tunnel.
- B. An SA never expires.
- C. A phase 1 SA is bidirectional, while a phase 2 SA is directional.
- D. Phase 2 SA expiration can be time-based, volume-based, or both.
- E. Both the phase 1 SA and phase 2 SA are bidirectional.

**Answer:** ACD

#### NEW QUESTION 116

- (Exam Topic 2)

Which statements about the firmware upgrade process on an active-active HA cluster are true? (Choose two.)

- A. The firmware image must be manually uploaded to each FortiGate.
- B. Only secondary FortiGate devices are rebooted.
- C. Uninterruptable upgrade is enabled by default.

D. Traffic load balancing is temporally disabled while upgrading the firmware.

**Answer:** CD

#### NEW QUESTION 118

- (Exam Topic 2)

Which three statements are true regarding session-based authentication? (Choose three.)

- A. HTTP sessions are treated as a single user.
- B. IP sessions from the same source IP address are treated as a single user.
- C. It can differentiate among multiple clients behind the same source IP address.
- D. It requires more resources.
- E. It is not recommended if multiple users are behind the source NAT

**Answer:** ACD

#### NEW QUESTION 120

- (Exam Topic 2)

When browsing to an internal web server using a web-mode SSL VPN bookmark, which IP address is used as the source of the HTTP request?

- A. remote user's public IP address
- B. The public IP address of the FortiGate device.
- C. The remote user's virtual IP address.
- D. The internal IP address of the FortiGate device.

**Answer:** D

#### Explanation:

Source IP seen by the remote resources is FortiGate's internal IP address and not the user's IP address

#### NEW QUESTION 124

- (Exam Topic 2)

Examine the two static routes shown in the exhibit, then answer the following question.

<a href="#">+ Create New</a> <a href="#">Edit</a> <a href="#">Clone</a> <a href="#">Delete</a>				
Destination	Gateway	Interface	Priority	Distance
172.20.168.0/24	172.25.1 76.1	port1	10	20
172.20.168.0/24	172.25.1 78.1	port2	20	20

Which of the following is the expected FortiGate behavior regarding these two routes to the same destination?

- A. FortiGate will load balance all traffic across both routes.
- B. FortiGate will use the port1 route as the primary candidate.
- C. FortiGate will route twice as much traffic to the port2 route
- D. FortiGate will only actuate the port1 route in the routing table

**Answer:** B

#### Explanation:

"If multiple static routes have the same distance, they are all active; however, only the one with the lowest priority is considered the best path."

#### NEW QUESTION 127

- (Exam Topic 2)

Refer to the exhibit, which contains a static route configuration.

### Edit Static Route

Destination

Subnet
Internet Service

Amazon-AWS

Gateway Address

10.200.1.254

Interface

port1

Comments

Write a comment... 0/255

Status

Enabled
Disabled

An administrator created a static route for Amazon Web Services. What CLI command must the administrator use to view the route?

- A. get router info routing-table all
- B. get internet service route list
- C. get router info routing-table database
- D. diagnose firewall proute list



**Answer:** D

**Explanation:**

Reference: <https://docs.fortinet.com/document/fortigate/latest/administration-guide/139692/routing-concepts>

**NEW QUESTION 131**

.....

## THANKS FOR TRYING THE DEMO OF OUR PRODUCT

Visit Our Site to Purchase the Full Set of Actual NSE4\_FGT-7.0 Exam Questions With Answers.

We Also Provide Practice Exam Software That Simulates Real Exam Environment And Has Many Self-Assessment Features. Order the NSE4\_FGT-7.0 Product From:

[https://www.2passeasy.com/dumps/NSE4\\_FGT-7.0/](https://www.2passeasy.com/dumps/NSE4_FGT-7.0/)

## Money Back Guarantee

### NSE4\_FGT-7.0 Practice Exam Features:

- \* NSE4\_FGT-7.0 Questions and Answers Updated Frequently
- \* NSE4\_FGT-7.0 Practice Questions Verified by Expert Senior Certified Staff
- \* NSE4\_FGT-7.0 Most Realistic Questions that Guarantee you a Pass on Your FirstTry
- \* NSE4\_FGT-7.0 Practice Test Questions in Multiple Choice Formats and Updatesfor 1 Year