

## Exam Questions 220-1001

CompTIA A+ Certification Exam: Core 1

<https://www.2passeasy.com/dumps/220-1001/>



#### NEW QUESTION 1

A user sets up cable modem at home and connects the modem to the ISP at the cable company. Which of the following network types does this connection describe?

- A. WAN
- B. LAN
- C. PAN
- D. MAN

**Answer:** A

#### NEW QUESTION 2

Ann, a user, needs to attend several day-long conferences and wants to ensure her mobile device will have enough power for these events. She is concerned about wall outlet availability at the conferences and needs to continuously use her device for important updates. Which of the following should a technician recommend to BEST accommodate Ann's needs?

- A. Wireless charging pad
- B. Built-in battery case
- C. Extra charging cords
- D. Airplane mode

**Answer:** A

#### NEW QUESTION 3

A laptop is connected to a conference room projector in extended display mode. The desktop icons appear normal on the laptop, but are disproportionate and illegible on the projector screen. Which of the following should the technician check?

- A. Video resolution
- B. HDMI connection
- C. Keystone
- D. Focus

**Answer:** A

#### NEW QUESTION 4

Which of the following has a P4 connector to provide a 12V output?

- A. Molex connector
- B. 24-pin adapter
- C. SCSI cable
- D. eSATA cable

**Answer:** A

#### NEW QUESTION 5

Which of the following connector types is used to terminate household telephone cabling?

- A. RG-6
- B. RJ-11
- C. RJ-45
- D. RG-59

**Answer:** B

#### NEW QUESTION 6

A user reports a laserjet printer is not printing properly. A technician prints a test page and notices the toner is smeared on the page. The technician confirms the toner cartridge is installed correctly and the paper in the tray is the right size. Which of the following printer components is the MOST likely cause of the problem?

- A. Fuser
- B. Roller
- C. Memory
- D. Toner

**Answer:** A

#### NEW QUESTION 7

A bank employee contacts the help desk for assistance with setting up a new computer. Which of the following peripherals will the technician MOST likely install alongside the device? (Select TWO)

- A. Magnetic reader
- B. Signature pad
- C. Flatbed scanner
- D. Web camera
- E. External storage drive

**Answer:** AD

#### NEW QUESTION 8

Some users are unable to access the Internet from their workstations. A technician runs the ipconfig command on one of the workstations and sees the following:

```
IPv4 address 192.168.1.27
Subnet mask 255.255.255.0
Default gateway 192.168.1.1
```

The technician pings 8.8.8.8 and gets no response. Next, the technician pings 192.168.1.1 and gets no response. The technician is able to successfully ping an adjacent workstation but cannot ping the print server on the floor below. Which of the following is the MOST likely cause of the Internet connectivity issue in the office?

- A. There is a problem with a router in the office
- B. There is a problem with a DNS server in the office
- C. The users are not getting correct IP addresses from the DHCP server
- D. The wireless access point in the area is down

**Answer:** A

#### NEW QUESTION 9

Which of the following resources is the MOST critical when using cloud file-storage synchronization applications?

- A. Disk speed
- B. I/O bandwidth
- C. RAM utilization
- D. CPU utilization

**Answer:** B

#### NEW QUESTION 10

A customer accidentally drops a laptop while it is charging. The next day, the customer notices the laptop will not turn on and calls a technician to investigate. The technician confirms the laptop will not turn on and calls a technician to investigate. The technician confirms the laptop will not turn on even though it is connected to the power adapter.

Which of the following components is the MOST likely cause of this behavior?

- A. Power adapter
- B. Battery
- C. DC jack
- D. Hard drive

**Answer:** C

#### NEW QUESTION 10

Several computers are having network connectivity issues. Two of the computers are wired and are not having any issues. The technician verifies that none of the computers having issues have been assigned a static IP.

Which of the following should the technician check NEXT?

- A. Check the closest AP for the area.
- B. Check each wireless adapter switch
- C. Check the group's network switch.
- D. Check the DHCP server.

**Answer:** D

#### NEW QUESTION 14

A customer's laptop display has suddenly become very dim. The image of the display can only be seen with a bright, external light, as adjusting the brightness/contracts controls does not cause much change.

Which of the following components MOST likely needs to be replaced?

- A. LCD panel
- B. Inverter
- C. Video card
- D. Digitizer

**Answer:** B

#### NEW QUESTION 16

You need to configure your mobile device to send and receive electronic messages from your company. You must use the company's WLAN as all e-mail services are on default non-secure ports.

The company's WLAN is broadcasting across the company for easier access. Both incoming and outgoing servers require login credentials.

Use the following parameters:

- Email address tech@techies.com
- Password P@SSwOrd
- Pop techies.com Port 110 Security: None
- IMAP techies.com Port 993 Security SSL
- smtp.techies.com Port 465 Security: TLS

- Company SSID Techies
- Security WPA2
- Passphrase P@SSwOrd
- SSID is not broadcasted INSTRUCTIONS:

Update the mobile device's parameters to fit the criteria.

If at any time you would like to bring back the initial state of the simulation, please click the Reset All button.



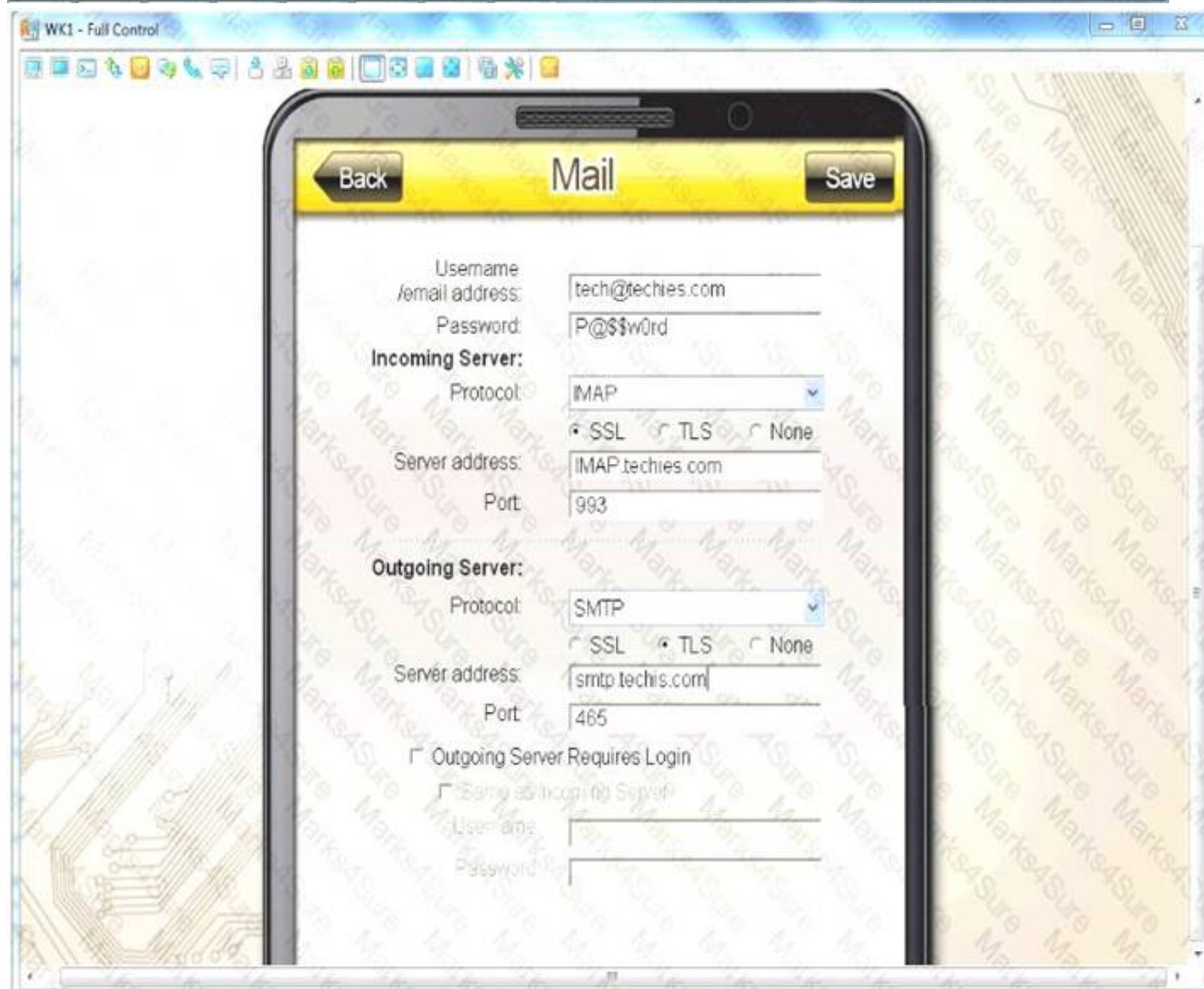
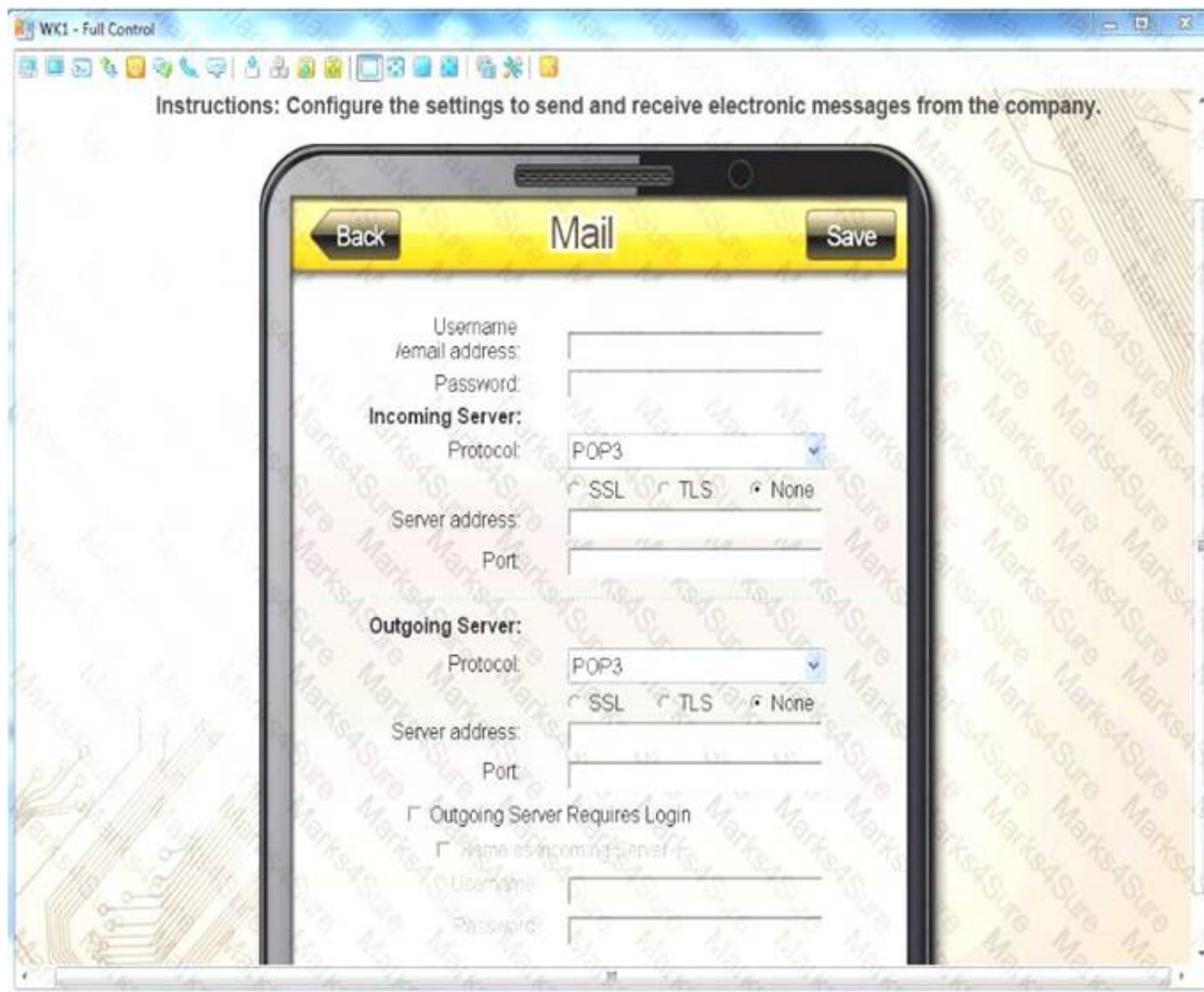
- A. Mastered
- B. Not Mastered

**Answer:** A

**Explanation:**

See explanation below





#### NEW QUESTION 21

Which of the following is an APIPA address?

- A. 162.200.1.1
- B. 167.100.1.1
- C. 168.254.0.1
- D. 169.254.1.1

**Answer: D**

#### NEW QUESTION 23

Which of the following connector types is MOST appropriate to use to connect a SOHO cable modem to the ISP?

- A. DB-9
- B. RJ-45
- C. RG-59
- D. RS-232

**Answer:** C

#### NEW QUESTION 26

A technician is determining the specifications for a desktop computer that will be used at trade shows all over the world. The computer will have the maximum amount of RAM. The CPU, GPU, and storage will be typical of a business workstation.

Which of the following system parameters is the MOST important for the technician to consider when choosing a power supply?

- A. input voltage
- B. Efficiency rating
- C. 12V rail amperage
- D. Number of SATA connectors

**Answer:** A

#### NEW QUESTION 28

A server administrator set up a VM to be used in a lab setting. A technician is setting up thin-client computers to access this VM. Which of the following tasks are required to complete the project? (Choose three.)

- A. Connect the device to a printer.
- B. Install the operating system.
- C. Install a USB keyboard and mouse.
- D. Connect the device to the network.
- E. Install the latest system updates.
- F. Install the latest device drivers.
- G. Connect the device to a monitor.
- H. Install the necessary applications.

**Answer:** DEH

#### NEW QUESTION 33

A user reports being unable to browse the internet. A technician believes the cause of the issue is related to DNS. Which of the following should the technician perform NEXT?

- A. Test the theory attempting to browse to a website known IP address.
- B. Implement preventive measures by manually assigning a DNS server to the PC.
- C. Identify the problem by running the command `ipconfig / flushdns`.
- D. Document the finding in the organization local knowledge base.

**Answer:** C

#### NEW QUESTION 36

Which of the following would provide power to an access point?

- A. POE injector
- B. Switch
- C. Repeater
- D. Modern

**Answer:** A

#### NEW QUESTION 40

Which of the following Ethernet cables would BEST support an application that requires a 600 Mbps throughput at the lowest price point?

- A. Cat 3
- B. Cat 5
- C. Cat 5e
- D. Cat 6

**Answer:** C

#### NEW QUESTION 41

A technician manually configured the wireless connection on the Chief Information Officer's (CIO's) new laptop so it can communicate with the network at the office. The CIO now is having trouble connecting to a guest WiFi hotspot. While the device has a gateway address and says it is connected, the CIO cannot access company email. Which of the following would BEST resolve the issue?

- A. Move the CIO's laptop closer to the access point to obtain a better RF signal
- B. Restart the wireless connection to obtain a self-assigned APIPA address
- C. Assign a different IP address to the device in conflict with the CIO's laptop

- D. Set the network connection to use DHCP instead of a static address
- E. Change the network's SSID to a mobile hotspot to access company email

**Answer:** D

#### NEW QUESTION 43

The IT department recently upgrade client computer for the graphics department. A user reports the new computer has not worked since up. It , makes unusual sound when pressing the power button.

A technician verifies the power cable works and the computer is connected properly to both data and power. The monitor powers on but display the message NO source. Which of the following BEST explains the cause of this problem?

- A. There is insufficient power to the computer
- B. There is back screen on system boot.
- C. The computer is overheating.
- D. The error beep codes on POST.

**Answer:** C

#### NEW QUESTION 46

A shipping department is having problems with its thermal label printer. Two columns on the left are not appearing on all labels. Which of the following should a technician do FIRST?

- A. Verify the ribbon is correctly aligned to the label
- B. Run a label calibration
- C. Remove stuck labels from the print path
- D. Replace the print head

**Answer:** A

#### NEW QUESTION 49

Following a recent malware infection, a user is unable to access network shares from the local server. A technician verifies the device is able to connect to the Internet and the hosted email provider off-site The technician also confirms the local server is online Additionally, a malware scar reports the user's computer is clean Which of the following is the best NEXT step to troubleshoot the issue?

- A. Verify the DNS servers are configured properly on the device.
- B. Assign a static IP address on the wired network connection
- C. Run a speed test on the network to check for slow transfer speeds
- D. Confirm the network connection is not using a link-local address
- E. Replace the Ethernet cable as it is causing limited connectivity

**Answer:** C

#### NEW QUESTION 50

An administrator is configuring a virtualization workstation that will host several mission-critical VMs for the human resources department The workstation will be required to support multiple users at once, and large amounts of data will be accessed daily Which of the following components will BEST meet these requirements? (Select THREE).

- A. Quad-core CPU
- B. Solid-state drives
- C. Additional RAM
- D. Redundant PSUs
- E. RAID 0 array
- F. High-end GPU
- G. RAID 6 array

**Answer:** ACG

#### NEW QUESTION 55

Which of the following devices can utilize VLANs to secure networks?

- A. Switch
- B. Hub
- C. Repeater
- D. Bridge

**Answer:** A

#### NEW QUESTION 56

Joe, a user, recently purchased a new multifunction printer and attempted to install it himself. He informed a technician that the printer is on his list of printers, but he is unable to print. The technician sees that the printer is listed as a generic printer under Devices and Printers. Which of the following should the technician do NEXT?

- A. Reboot the computer into safe mode and try to print a test page
- B. Download the correct drivers from the manufacturer's website and install them
- C. Unplug the USB cable from the printer and try another USB slot on the PC
- D. Set the printer as the default within the device properties



**Answer:** B

**NEW QUESTION 60**

A projector's image begins to flicker during a presentation. The laptop display does not produce this issue. When a technician changes the resolution on the laptop, the issue persists. Which of the following is the NEXT step the technician should take?

- A. Check the connectivity of the VGA cable.
- B. Check the connectivity of the power cable.
- C. Change the aspect ratio on the laptop.
- D. Change the settings of the projector.

**Answer:** A

**NEW QUESTION 61**

A user reports that a laptop is not connecting to the corporate wireless network. A technician confirms a with a smartphone that the corporate wireless network is available and can be accessed. the technician observes that the Ethernet connection to the corporate network is working. The technician disconnects the Ethernet cable.

Which of the following should the technician do NEXT to troubleshoot this problem?

- A. Confirm that the laptop wireless card is turned on.
- B. Confirm that the laptop is in range for the access point.
- C. Confirm that the correct wireless network is selected.
- D. Confirm the user's network login ID and password.

**Answer:** A

**NEW QUESTION 63**

An associate is seeking advice on which device to purchase for a friend who is a business owner. The friend needs the ability to chat activity while keeping in contact with the home office.

Which of the following would be the BEST recommendation?

- A. Smart watch
- B. Fitness monitor
- C. Global positioning sensor
- D. Portable hotspot

**Answer:** A

**NEW QUESTION 64**

A systems administrator is configuring a server to host several virtual machines. The administrator configures the server and is ready to begin provisioning the virtual machines.

Which of the following features should the administrator utilize to complete the task?

- A. Hypervisor
- B. Disk management
- C. Terminal services
- D. Device Manager
- E. Virtual LAN

**Answer:** A

**NEW QUESTION 69**

Which of the following technologies can be used for wireless payments?

- A. NFC
- B. Bluetooth
- C. IR
- D. LTE

**Answer:** A

**NEW QUESTION 74**

A user wants to build a computer with a high-end CPU, plenty of RAM, and a high-end graphics card for online gaming. The user wants to verify that the graphics card is compatible with the motherboard. Which of the following connection types would the user MOST likely utilize to connect the video card to the motherboard?

- A. PCIe
- B. ISA
- C. AGP
- D. USB

**Answer:** A

**NEW QUESTION 76**

A technician is hired to install network cable in a crawl space running the length of a hallway. To do so without a fire code violation, which of the following types of cable should the technician run?



- A. Plenum
- B. Fiber
- C. Shielded
- D. Coaxial

**Answer:** A

#### NEW QUESTION 81

After upgrading a smartphone's OS, Joe, a user, reports the smartphone no longer connects to his automobile automatically when near it, Joe, restarts the smartphone, but the problem persists. Which of the following should a technician do NEXT to restore the previous functionality?

- A. Connect the smartphone to the automobile via USB
- B. Reenable the smartphone's Bluetooth radio
- C. Perform a rollback of the smartphone's OS
- D. Pair the smartphone with the automobile

**Answer:** B

#### NEW QUESTION 83

A user brings in a smartphone for repair. The device is unable to send/receive calls or connect to WiFi. All applications on the device are working unless they require connectivity.

Which of the following is MOST likely causing the problem?

- A. Airplane mode
- B. Tethering
- C. Disabled hotspot
- D. VPN

**Answer:** A

#### NEW QUESTION 84

Which of the following Internet connection types often terminates at a switching center and then requires the use of a different media for the last mile to the customer?

- A. ISDN
- B. DSL
- C. Fiber
- D. Cable

**Answer:** B

#### NEW QUESTION 85

A technician is setting up a VM for use in testing software deployments. The VM is offline, but the hypervisor is not.

Which of the following settings should the technician change to resolve this issue?

- A. Virtual security
- B. Virtual storage
- C. Virtual CPU
- D. Virtual switch
- E. Virtual RAM

**Answer:** C

#### NEW QUESTION 87

Company management wants to give users the ability to work from home during periods of bad weather. Which of the following would enable the workforce to do this?

- A. NAT
- B. VLAN
- C. VPN
- D. HIPS

**Answer:** C

#### NEW QUESTION 92

Multiple users report that the network printer, which is connected through the print server, is not printing. Which of the following should a technician do FIRST to remedy this situation?

- A. Replace the USB cable.
- B. Reinstall the drivers on users' PCs.
- C. have users restart their PCs.
- D. Clear the print queue.

**Answer:** D

#### NEW QUESTION 93

The corporate office has mandated that all documents must be electronically signed and encrypted with a certificate in order to be stored on the network. The IT department has been asked to ensure the proper file format is used to accomplish this task. Which of the following would satisfy the requirement?

- A. Print to PDF
- B. Print to file
- C. Print to image
- D. Print to XPS

**Answer:** A

#### NEW QUESTION 97

Joe, a user, reports that his new smart wearable device is not synchronizing to his mobile device. Both devices are powered on, but the mobile device fails to read the data from the wearable. Which of the following will MOST likely fix this issue?

- A. Pair the devices
- B. Set the SSID
- C. Update the smart wearable device firmware
- D. Enable NFC

**Answer:** A

#### NEW QUESTION 100

A technician configures a new printer to be accessible via a print server After setting up the printer on a Windows client machine, the printer prints normally However, after setting up the printer on a macOS client machine, the printer only prints garbled text Which of the following should the technician do to resolve this issue?

- A. Add a macOS-compatible print driver to the printer object on the print server
- B. Configure the Windows client to share the printer with the macOS client
- C. Set the printer on the macOS client to connect to the print server via IPv6
- D. Ensure the network time of the macOS client matches that of the print server.

**Answer:** A

#### NEW QUESTION 101

A server needs a RAM upgrade, and a technician has been tasked with retrieving the RAM from storage and then installing it. Which of the following is the BEST RAM type for the technician to retrieve?

- A. SoDIMM
- B. DDR4
- C. Single channel
- D. ECC

**Answer:** B

#### NEW QUESTION 106

A technician needs to routinely run scripting commands in Linux but does not want to walk over the server room every time to perform the task. The technician also travels between buildings and has a Windows 10 laptop with 4GB of memory and a fully partitioned 500GB hard drive. Which of the following steps should the technician take to resolve this issue? (Choose two.)

- A. Increase the memory to 8GB.
- B. Install a Linux guest VM.
- C. Add another 500GB hard drive.
- D. Create a Linux LiveBoot CD.
- E. Repartition the hard drive.
- F. Install Linux on a new ext3 partition.

**Answer:** EF

#### NEW QUESTION 109

Which of the following cloud computing concepts facilitates automated server deployment?

- A. NaaS
- B. IaaS
- C. PaaS
- D. SaaS

**Answer:** B

#### NEW QUESTION 111

Which of the following is designed to function BEST in harsh lighting conditions?

- A. Large tablet
- B. E-reader
- C. Smart watch
- D. Virtual reality headset

**Answer:** D

#### NEW QUESTION 114

A technician is troubleshooting a WiFi issues with a laptop user in a corporate office. The user can connect to web pages without trouble; however, the user cannot connect to the email server or print a locally stored document to the network printer. The technician cannot ping the mail server or the network printer. No other users are experiencing this issue. Which of the following is MOST likely causing the issue?

- A. The laptop has an APIPA address
- B. The laptop is configured to the wrong default gateway
- C. The laptop is connected to the guest WiFi
- D. The laptop is configured with a static IP

**Answer:** C

#### NEW QUESTION 118

Which of the following services provides the ability to resolve UNC to appropriate IP addresses?

- A. DNS
- B. DHCP
- C. Proxy
- D. Web server

**Answer:** A

#### NEW QUESTION 121

Which of the following peripherals would a company use to take inventory quickly and update price tags for products? (Choose two.)

- A. Barcode scanner
- B. Label printer
- C. Magnetic reader
- D. KVM switch
- E. NFC device
- F. Flatted scanner

**Answer:** AC

#### NEW QUESTION 125

A customer is using a cloud storage program that maintains a copy of local file on the cloud storage servers. The WF network is not very fast, and the customer users bandwidth intensive video streaming all day. Which of the following parameters should be adjust to keep the cloud storage program from using too much bandwidth?

- A. Synchronization settings
- B. Wireless settings
- C. Video streaming settings
- D. QoS settings

**Answer:** D

#### NEW QUESTION 130

A small business owner with a limited budget wants to host a company website and ERP applications in the cloud. Which of the following would be the BEST cloud model to accomplish this task?

- A. DaaS
- B. IaaS
- C. PaaS
- D. SaaS

**Answer:** C

#### NEW QUESTION 135

Which of the following wireless standards is only capable of 5GHz frequencies?

- A. 802.11a
- B. 802.11ac
- C. 802.11b
- D. 802.11g

**Answer:** A

#### NEW QUESTION 140

A technician is setting up a new wireless network at a branch office that previously had only wired connectivity with statically assigned IP addresses. After setting up the network, the technician configures a server to provide IP addresses to wireless clients. During testing, the technician is unable to access the Internet or named network resources. The technician receives a valid IP address from the DHCP server and can ping the default gateway. Which of the following should be technician check NEXT to resolve this issue?

- A. Ensure the options are configured to provide a DNS server.
- B. Verify the Windows Firewall is turned off.
- C. Configure the wireless network's SSID to be hidden.

D. Enable file and printer sharing in the OS.

**Answer:** A

#### NEW QUESTION 142

A network administrator must install a device that will proactively stop outside attacks from reaching the LAN. Which of the following devices would BEST meet the organization's needs?

- A. IPS
- B. IDS.
- C. Proxy server
- D. Authentication server.

**Answer:** A

#### NEW QUESTION 143

A user reports that printing on heavy cardstock paper results in the image smearing if touched. When printing on plain paper, the problem does not occur. Which of the following would be the NEXT troubleshooting step to perform?

- A. Increase the fuser temperature.
- B. Change the paper feed rate.
- C. Clean the transfer roller.
- D. Replace the toner cartridge.

**Answer:** A

#### NEW QUESTION 148

A technician needs to give users the ability to transfer files between mobile devices. The technician teaches the staff how to use a file transfer method in which the devices need to be in close proximity with line-of-sight access to each other. Which of the following technologies is the technician teaching to the staff?

- A. IR
- B. Bluetooth
- C. Tethering
- D. NFC

**Answer:** A

#### NEW QUESTION 153

A network administrator is troubleshooting a notebook that is not loading the local Windows 10 operating system. All the computers inside the company are installed using UEFI mode selected. The message on the screen shows a failed attempt to connect to a PXE server. When requested, the end user reported trying to improve the computer's speed by changing some BIOS configurations randomly. Which of the following should the network administrator check FIRST inside BIOS?

- A. C-states should be configured to 2
- B. Secure Boot should be enabled
- C. Wake-on-LAN should be unchecked
- D. The PXE server address should be set

**Answer:** D

#### NEW QUESTION 154

.....

## THANKS FOR TRYING THE DEMO OF OUR PRODUCT

Visit Our Site to Purchase the Full Set of Actual 220-1001 Exam Questions With Answers.

We Also Provide Practice Exam Software That Simulates Real Exam Environment And Has Many Self-Assessment Features. Order the 220-1001 Product From:

<https://www.2passeasy.com/dumps/220-1001/>

## Money Back Guarantee

### 220-1001 Practice Exam Features:

- \* 220-1001 Questions and Answers Updated Frequently
- \* 220-1001 Practice Questions Verified by Expert Senior Certified Staff
- \* 220-1001 Most Realistic Questions that Guarantee you a Pass on Your FirstTry
- \* 220-1001 Practice Test Questions in Multiple Choice Formats and Updatesfor 1 Year