



Fortinet

Exam Questions NSE4_FGT-7.0

Fortinet NSE 4 - FortiOS 7.0

NEW QUESTION 1

- (Exam Topic 1)
Refer to the exhibits.

Exhibit AExhibit B

```
# get system performance status
CPU states: 0% user 0% system 0% nice 100% idle 0% iowait 0% irq 0% softirq
CPU0 states: 0% user 0% system 0% nice 100% idle 0% iowait 0% irq 0% softirq
Memory: 2061108k total, 1854997k used (90%), 106111k free (5.1%), 100000k freeable (4.8%)
Average network usage: 83 / 0 kbps in 1 minute, 81 / 0 kbps in 10 minutes, 81 / 0 kbps in 30
minutes
Average sessions: 5 sessions in 1 minute, 3 sessions in 10 minutes, 3 sessions in 30 minutes
Average session setup rate: 0 sessions per second in last 1 minute, 0 sessions per second in last
10 minutes, 0 sessions per second in last 30 minutes
Virus caught: 0 total in 1 minute
IPS attacks blocked: 0 total in 1 minute
Uptime: 10 days, 3 hours, 28 minutes
```

Exhibit AExhibit B

```
config system global
    set memory-use-threshold-red 88
    set memory-use-threshold-extreme 95
    set memory-use-threshold-green 82
end
```

Exhibit A shows system performance output. Exhibit B shows a FortiGate configured with the default configuration of high memory usage thresholds. Based on the system performance output, which two statements are correct? (Choose two.)

- A. Administrators can access FortiGate only through the console port.
- B. FortiGate has entered conserve mode.
- C. FortiGate will start sending all files to FortiSandbox for inspection.
- D. Administrators cannot change the configuration.

Answer: BD

Explanation:

Reference: <https://www.skillfulist.com/fortigate/fortigate-conserve-mode-how-to-stop-it-and-what-it-means/>

NEW QUESTION 2

- (Exam Topic 1)
Refer to the exhibit.

Outgoing Interfaces

☐ Manual
Manually assign outgoing interfaces.

☒ Best Quality
The interface with the best measured performance is selected.

☐ Lowest Cost (SLA)
The interface that meets SLA targets is selected. When there is a tie, the interface with the lowest assigned cost is selected.

☐ Maximize Bandwidth (SLA)
Traffic is load balanced among interfaces that meet SLA targets.

Interface preference

port1

port2

port3

port4

+

Measured SLA

SLA_1

Quality criteria

Latency

Status

Enable

Disable

```
NGFW-1 # diagnose sys virtual-wan-link health-check
Health Check(DC_PBX_SLA):
Seq(1 port1): state(alive), packet-loss(0.000%) latency(21.566), jitter(2.685) sla_map=0x
Seq(2 port2): state(alive), packet-loss(0.000%) latency(54.349), jitter(4.287) sla_map=0x
Seq(3 port3): state(alive), packet-loss(0.100%) latency(32.683), jitter(5.685) sla_map=0x
Seq(4 port4): state(alive), packet-loss(2.010%) latency(48.881), jitter(4.287) sla_map=0x
```

The exhibit contains the configuration for an SD-WAN Performance SLA, as well as the output of diagnose sys virtual-wan-link health-check. Which interface will be selected as an outgoing interface?

- A. port2
- B. port4
- C. port3
- D. port1

Answer: D

Explanation:

Port 1 shows the lowest latency.

NEW QUESTION 3

- (Exam Topic 1)

An administrator wants to configure timeouts for users. Regardless of the user's behavior, the timer should start as soon as the user authenticates and expire after the configured value.

Which timeout option should be configured on FortiGate?

- A. auth-on-demand
- B. soft-timeout
- C. idle-timeout
- D. new-session
- E. hard-timeout

Answer: E

Explanation:

Reference: <https://kb.fortinet.com/kb/documentLink.do?externalID=FD37221#:~:text=Hard%20timeout%3A%20User%20>

NEW QUESTION 4

- (Exam Topic 1)

Refer to the exhibit.



Review the Intrusion Prevention System (IPS) profile signature settings. Which statement is correct in adding the FTP.Login.Failed signature to the IPS sensor profile?

- A. The signature setting uses a custom rating threshold.
- B. The signature setting includes a group of other signatures.
- C. Traffic matching the signature will be allowed and logged.
- D. Traffic matching the signature will be silently dropped and logged.

Answer: D

Explanation:

Action is drop, signature default action is listed only in the signature, it would only match if action was set to default.

NEW QUESTION 5

- (Exam Topic 1)

A network administrator wants to set up redundant IPsec VPN tunnels on FortiGate by using two IPsec VPN tunnels and static routes.

- * All traffic must be routed through the primary tunnel when both tunnels are up
- * The secondary tunnel must be used only if the primary tunnel goes down
- * In addition, FortiGate should be able to detect a dead tunnel to speed up tunnel failover

Which two key configuration changes are needed on FortiGate to meet the design requirements? (Choose two.)

- A. Configure a high distance on the static route for the primary tunnel, and a lower distance on the static route for the secondary tunnel.
- B. Enable Dead Peer Detection.
- C. Configure a lower distance on the static route for the primary tunnel, and a higher distance on the static route for the secondary tunnel.

D. Enable Auto-negotiate and Autokey Keep Alive on the phase 2 configuration of both tunnels.

Answer: BC

Explanation:

B - because the customer requires the tunnels to notify when a tunnel goes down. DPD is designed for that purpose. To send a packet over a firewall to determine a failover for the next tunnel after a specific amount of time of not receiving a response from its peer.
 C - remember when it comes to choosing a route with regards to Administrative Distance. The route with the lowest distance for that particular route will be chosen. So, by configuring a lower routing distance on the primary tunnel, means that the primary tunnel will be chosen to route packets towards their destination.

NEW QUESTION 6

- (Exam Topic 1)

Which two statements about FortiGate FSSO agentless polling mode are true? (Choose two.)

- A. FortiGate uses the AD server as the collector agent.
- B. FortiGate uses the SMB protocol to read the event viewer logs from the DCs.
- C. FortiGate does not support workstation check.
- D. FortiGate directs the collector agent to use a remote LDAP server.

Answer: BD

Explanation:

Reference: <https://kb.fortinet.com/kb/documentLink.do?externalID=FD47732>

NEW QUESTION 7

- (Exam Topic 1)

Which statement correctly describes NetAPI polling mode for the FSSO collector agent?

- A. The collector agent uses a Windows API to query DCs for user logins.
- B. NetAPI polling can increase bandwidth usage in large networks.
- C. The collector agent must search security event logs.
- D. The NetSession Enum function is used to track user logouts.

Answer: D

Explanation:

Reference: <https://kb.fortinet.com/kb/documentLink.do?externalID=FD34906>

<https://kb.fortinet.com/kb/microsites/search.do?cmd=displayKC&docType=kc&externalId=FD34906&sliceId=1>

NEW QUESTION 8

- (Exam Topic 1)

Which two inspection modes can you use to configure a firewall policy on a profile-based next-generation firewall (NGFW)? (Choose two.)

- A. Proxy-based inspection
- B. Certificate inspection
- C. Flow-based inspection
- D. Full Content inspection

Answer: AC

NEW QUESTION 9

- (Exam Topic 1)

Refer to the exhibit.

Edit IPS Sensor

Name

WINDOWS_SERVERS

Comments

Write a comment... 0/255

Block malicious URLs

☐

IPS Signatures and Filters

+ Create New

Edit

Delete

Details	Exempt IPs	Action	Packet Logging	Status
NTP.Spoofed.KoD.DoS	0	Monitor	Enabled	Enabled
OS Windows		Block	Disabled	Enabled

The exhibit shows the IPS sensor configuration.

If traffic matches this IPS sensor, which two actions is the sensor expected to take? (Choose two.)

- A. The sensor will allow attackers matching the NTP.Spoofed.KoD.DoS signature.
- B. The sensor will block all attacks aimed at Windows servers.

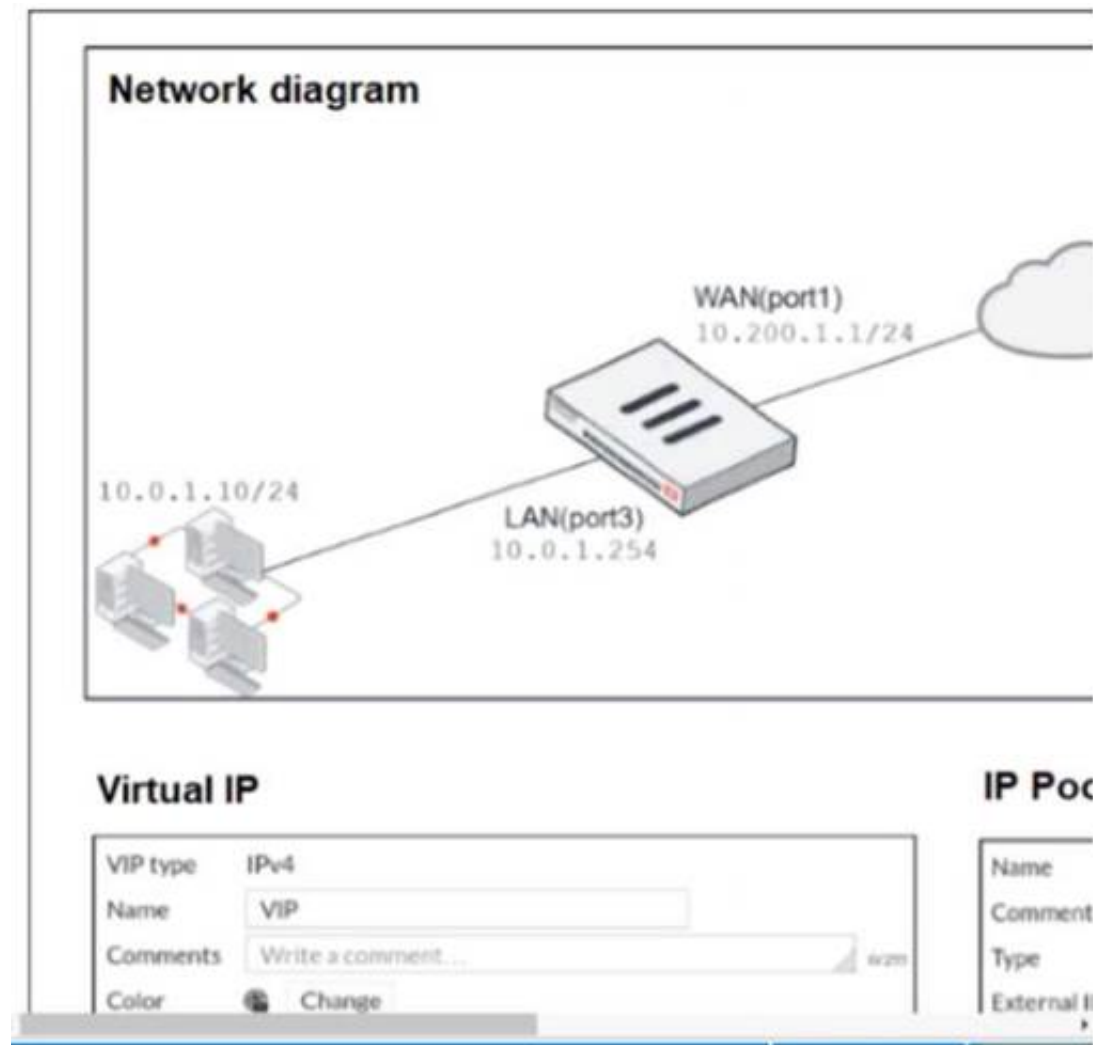
- C. The sensor will reset all connections that match these signatures.
- D. The sensor will gather a packet log for all matched traffic.

Answer: AB

NEW QUESTION 10

- (Exam Topic 1)

Refer to the exhibit.



The exhibit contains a network diagram, virtual IP, IP pool, and firewall policies configuration. The WAN (port1) interface has the IP address 10.200.1.1/24. The LAN (port3) interface has the IP address 10.0.1.254. /24. The first firewall policy has NAT enabled using IP Pool. The second firewall policy is configured with a VIP as the destination address. Which IP address will be used to source NAT the internet traffic coming from a workstation with the IP address 10.0.1.10?

- A. 10.200.1.1
- B. 10.200.3.1
- C. 10.200.1.100
- D. 10.200.1.10

Answer: A

Explanation:

Reference:

<https://help.fortinet.com/fos60hlp/60/Content/FortiOS/fortigate-firewall/Concepts%20-%20Firewall/Static%20NAT>

Reference: <https://kb.fortinet.com/kb/documentLink.do?externalID=FD44529>

NEW QUESTION 10

- (Exam Topic 1)

Which two configuration settings are synchronized when FortiGate devices are in an active-active HA cluster? (Choose two.)

- A. FortiGuard web filter cache
- B. FortiGate hostname
- C. NTP
- D. DNS

Answer: CD

NEW QUESTION 15

- (Exam Topic 1)

Refer to the exhibit.

Username	Administrator	Change Password
Type	<div>Local User</div> <div>Match a user on a remote server group</div> <div>Match all users in a remote server group</div> <div>Use public key infrastructure (PKI) group</div>	
Comments	Write a comment... 0/255	
Administrator Profile	prof_admin	
Email Address	admin@xyz.com	
<input type="checkbox"/> SMS		
<input type="checkbox"/> Two-factor Authentication		
<input type="checkbox"/> Restrict login to trusted hosts		
<input type="checkbox"/> Restrict admin to guest account provisioning only		

The global settings on a FortiGate device must be changed to align with company security policies. What does the Administrator account need to access the FortiGate global settings?

- A. Change password
- B. Enable restrict access to trusted hosts
- C. Change Administrator profile
- D. Enable two-factor authentication

Answer: C

Explanation:

Reference: <https://kb.fortinet.com/kb/documentLink.do?externalID=FD34502>

NEW QUESTION 19

- (Exam Topic 1)

Which engine handles application control traffic on the next-generation firewall (NGFW) FortiGate?

- A. Antivirus engine
- B. Intrusion prevention system engine
- C. Flow engine
- D. Detection engine

Answer: B

Explanation:

Reference: <http://docs.fortinet.com/document/fortigate/6.0.0/handbook/240599/application-control>

NEW QUESTION 24

- (Exam Topic 1)

Which three statements about a flow-based antivirus profile are correct? (Choose three.)

- A. IPS engine handles the process as a standalone.
- B. FortiGate buffers the whole file but transmits to the client simultaneously.
- C. If the virus is detected, the last packet is delivered to the client.
- D. Optimized performance compared to proxy-based inspection.
- E. Flow-based inspection uses a hybrid of scanning modes available in proxy-based inspection.

Answer: BDE

Explanation:

Reference: <https://forum.fortinet.com/tm.aspx?m=192309>

NEW QUESTION 26

- (Exam Topic 1)

Which two statements are correct about NGFW Policy-based mode? (Choose two.)

- A. NGFW policy-based mode does not require the use of central source NAT policy
- B. NGFW policy-based mode can only be applied globally and not on individual VDOMs
- C. NGFW policy-based mode supports creating applications and web filtering categories directly in a firewall policy
- D. NGFW policy-based mode policies support only flow inspection

Answer: CD

NEW QUESTION 28

- (Exam Topic 1)

Refer to the exhibit.

```
# diagnose test application ipsmonitor
1: Display IPS engine information
2: Toggle IPS engine enable/disable status
3: Display restart log
4: Clear restart log
5: Toggle bypass status
98: Stop all IPS engines
99: Restart all IPS engines and monitor
```

Examine the intrusion prevention system (IPS) diagnostic command.

Which statement is correct If option 5 was used with the IPS diagnostic command and the outcome was a decrease in the CPU usage?

- A. The IPS engine was inspecting high volume of traffic.
- B. The IPS engine was unable to prevent an intrusion attack.
- C. The IPS engine was blocking all traffic.
- D. The IPS engine will continue to run in a normal state.

Answer: A

Explanation:








Reference:

<https://docs.fortinet.com/document/fortigate/6.2.3/cookbook/232929/troubleshooting-high-cpu-usage>

NEW QUESTION 30

- (Exam Topic 2)

View the exhibit:

▼ Status	▼ Name	▼ VLAN ID	▼ Type	▼ IP/Netmask
Physical(12)				
	port1		Physical Interface	10.200.1.1 255.255.255.0
	port1-VLAN1	1	VLAN	10.200.5.1 255.255.255.0
	port1-VLAN10	10	VLAN	10.0.10.1 255.255.255.0
	port2		Physical Interface	10.200.2.1 255.255.255.0
	port2-VLAN1	1	VLAN	10.0.5.1 255.255.255.0
	port2-VLAN10	10	VLAN	10.0.20.254 255.255.255.0
	port3		Physical Interface	10.0.1.254 255.255.255.0

Which the FortiGate handle web proxy traffic rue? (Choose two.)

- A. Broadcast traffic received in port1-VLAN10 will not be forwarded to port2-VLAN10.
- B. port-VLAN1 is the native VLAN for the port1 physical interface.
- C. port1-VLAN10 and port2-VLAN10 can be assigned to different VDOMs.
- D. Traffic between port1-VLAN1 and port2-VLAN1 is allowed by default.

Answer: AC

NEW QUESTION 35

- (Exam Topic 2)

An administrator is configuring an Ipsec between site A and siteB. The Remotes Gateway setting in both sites has been configured as Static IP Address. For site A, the local quick mode selector is 192.168.1.0/24 and the remote quick mode selector is 192.168.2.0/24. How must the administrator configure the local quick mode selector for site B?

- A. 192.168.3.0/24
- B. 192.168.2.0/24
- C. 192.168.1.0/24
- D. 192.168.0.0/8

Answer: B

NEW QUESTION 36

- (Exam Topic 2)

Refer to the FortiGuard connection debug output.

```
FortiGate # diagnose debug rating
Locale      : english

Service     : Web-Filter
Status      : Enable
License     : Contract

Num. of servers : 1
Protocol     : https
Port        : 443
Anycast      : Enable
Default servers : Not included
-- Server List (Tue Feb 1 12:00:25 2020) --

IP           Weight    RTT  Flags  TZ      Packets  Curr  Lost  Total  Lost
173.243.138.210 10      85   DI     -8      868      0     0     0
96.45.33.68    10     270   -8     -8      868      0     0     0
173.243.138.211 10     340   -8     -8      859      0     0     0
```

Based on the output shown in the exhibit, which two statements are correct? (Choose two.)

- A. A local FortiManager is one of the servers FortiGate communicates with.
- B. One server was contacted to retrieve the contract information.
- C. There is at least one server that lost packets consecutively.
- D. FortiGate is using default FortiGuard communication settings.

Answer: BD

NEW QUESTION 40

- (Exam Topic 2)

An administrator must disable RPF check to investigate an issue.

Which method is best suited to disable RPF without affecting features like antivirus and intrusion prevention system?

- A. Enable asymmetric routing, so the RPF check will be bypassed.
- B. Disable the RPF check at the FortiGate interface level for the source check.
- C. Disable the RPF check at the FortiGate interface level for the reply check.
- D. Enable asymmetric routing at the interface level.

Answer: B

Explanation:

Reference: <https://kb.fortinet.com/kb/documentLink.do?externalID=FD33955>

NEW QUESTION 42

- (Exam Topic 2)

An administrator has a requirement to keep an application session from timing out on port 80. What two changes can the administrator make to resolve the issue without affecting any existing services running through FortiGate? (Choose two.)

- A. Create a new firewall policy with the new HTTP service and place it above the existing HTTP policy.
- B. Create a new service object for HTTP service and set the session TTL to never
- C. Set the TTL value to never under config system-ttl
- D. Set the session TTL on the HTTP policy to maximum

Answer: BC

NEW QUESTION 43

- (Exam Topic 2)

Which two statements are correct regarding FortiGate FSSO agentless polling mode? (Choose two.)

- A. FortiGate points the collector agent to use a remote LDAP server.
- B. FortiGate uses the AD server as the collector agent.
- C. FortiGate uses the SMB protocol to read the event viewer logs from the DCs.
- D. FortiGate queries AD by using the LDAP to retrieve user group information.

Answer: CD

Explanation:

Fortigate Infrastructure 7.0 Study Guide P.272-273 <https://kb.fortinet.com/kb/documentLink.do?externalID=FD47732>

NEW QUESTION 47

- (Exam Topic 2)

Refer to the exhibit.



Which contains a network diagram and routing table output. The Student is unable to access Webserver.
 What is the cause of the problem and what is the solution for the problem?

- A. The first packet sent from Student failed the RPF check. This issue can be resolved by adding a static route to 10.0.4.0/24 through wan1.
- B. The first reply packet for Student failed the RPF check. This issue can be resolved by adding a static route to 10.0.4.0/24 through wan1.
- C. The first reply packet for Student failed the RPF check. This issue can be resolved by adding a static route to 203.0.114.24/32 through port3.
- D. The first packet sent from Student failed the RPF check. This issue can be resolved by adding a static route to 203.0.114.24/32 through port3.

Answer: D

NEW QUESTION 52

- (Exam Topic 2)

Which two statements are true about the RPF check? (Choose two.)

- A. The RPF check is run on the first sent packet of any new session.
- B. The RPF check is run on the first reply packet of any new session.
- C. The RPF check is run on the first sent and reply packet of any new session.
- D. RPF is a mechanism that protects FortiGate and your network from IP spoofing attacks.

Answer: AD

Explanation:

Reference: <https://www.programmersought.com/article/16383871634/>

NEW QUESTION 57

- (Exam Topic 2)

To complete the final step of a Security Fabric configuration, an administrator must authorize all the devices on which device?

- A. FortiManager
- B. Root FortiGate
- C. FortiAnalyzer
- D. Downstream FortiGate

Answer: B

NEW QUESTION 62

- (Exam Topic 2)

Which feature in the Security Fabric takes one or more actions based on event triggers?

- A. Fabric Connectors
- B. Automation Stitches
- C. Security Rating
- D. Logical Topology

Answer: B

Explanation:

Reference: <https://docs.fortinet.com/document/fortigate/6.2.0/cookbook/286973/fortinet-security-fabric>

NEW QUESTION 65

- (Exam Topic 2)

Which two statements are correct about a software switch on FortiGate? (Choose two.)

- A. It can be configured only when FortiGate is operating in NAT mode
- B. Can act as a Layer 2 switch as well as a Layer 3 router
- C. All interfaces in the software switch share the same IP address
- D. It can group only physical interfaces

Answer: AC

NEW QUESTION 70

- (Exam Topic 2)

Which of statement is true about SSL VPN web mode?

- A. The tunnel is up while the client is connected.
- B. It supports a limited number of protocols.
- C. The external network application sends data through the VPN.
- D. It assigns a virtual IP address to the client.

Answer: B

Explanation:

FortiGate_Security_6.4 page 575 - Web mode requires only a web browser, but supports a limited number of protocols.

NEW QUESTION 72

- (Exam Topic 2)

The HTTP inspection process in web filtering follows a specific order when multiple features are enabled in the web filter profile. What order must FortiGate use when the web filter profile has features enabled, such as safe search?

- A. DNS-based web filter and proxy-based web filter
- B. Static URL filter, FortiGuard category filter, and advanced filters
- C. Static domain filter, SSL inspection filter, and external connectors filters
- D. FortiGuard category filter and rating filter

Answer: B

Explanation:

Reference: https://fortinet121.rssing.com/chan-67705148/all_p1.html

NEW QUESTION 76

- (Exam Topic 2)

Refer to the exhibit.

Authentication rule

Edit Rule Authentication rule

Name: WebproxyRule

Source Address: LOCAL_SUBNET

Protocol: HTTP

Authentication Scheme: Web-Proxy-Scheme

IP-based Authentication: ☒ Enable ☐ Disable

SSO Authentication Scheme: ☐

Comments: Write a comment 0/1023

Enable This Rule: ☒ Enable ☐ Disable

Users

[+ Create New](#) [Edit](#) [Delete](#)

Name	Type
User-A	LOCAL
User-B	LOCAL
User-C	LOCAL

Authentication scheme

Edit Authentication Scheme

Name: Web-Proxy-Scheme

Method: Form-based

User database: ☒ Local ☐ Other

Two-factor authentication: ☐

Firewall address

Edit Address

Category: ☒ Address ☐ Proxy Address

Name: LOCAL_SUBNET

Color: [Change](#)

Type: Subnet

IP/Netmask: 10.0.1.0/24

Interface: ☐ any

Static route configuration: ☐

Comments: Write a comment 0/255

Proxy address

Edit Address

Category: ☐ Address ☒ Proxy Address

Name: Browser-CAT-1

Color: [Change](#)

Type: User Agent

Host: LOCAL_SUBNET

User Agent: Apple Safari, Google Chrome, Microsoft Internet Explorer or Spart

Comments: Write a comment 0/255

Proxy address

Edit Address

Category: ☐ Address ☒ Proxy Address

Name: Browser-CAT-2

Color: [Change](#)

Type: User Agent

Host: LOCAL_SUBNET

User Agent: Mozilla Firefox

Comments: Write a comment 0/255

Web proxy address

ID	Source	Destination	Schedule	Action
explicit-web proxy → port1				
1	Browser-CAT-2 LOCAL_SUBNET User-B	all	always	DENY
2	LOCAL_SUBNET Browser-CAT-1 User-A	all	always	ACCEPT
3	LOCAL_SUBNET	all	always	ACCEPT

The exhibit shows proxy policies and proxy addresses, the authentication rule and authentication scheme, users, and firewall address.

An explicit web proxy is configured for subnet range 10.0.1.0/24 with three explicit web proxy policies. The authentication rule is configured to authenticate HTTP requests for subnet range 10.0.1.0/24 with a form-based authentication scheme for the FortiGate local user database. Users will be prompted for authentication.

How will FortiGate process the traffic when the HTTP request comes from a machine with the source IP 10.1.1.10 to the destination <http://www.fortinet.com>? (Choose two.)

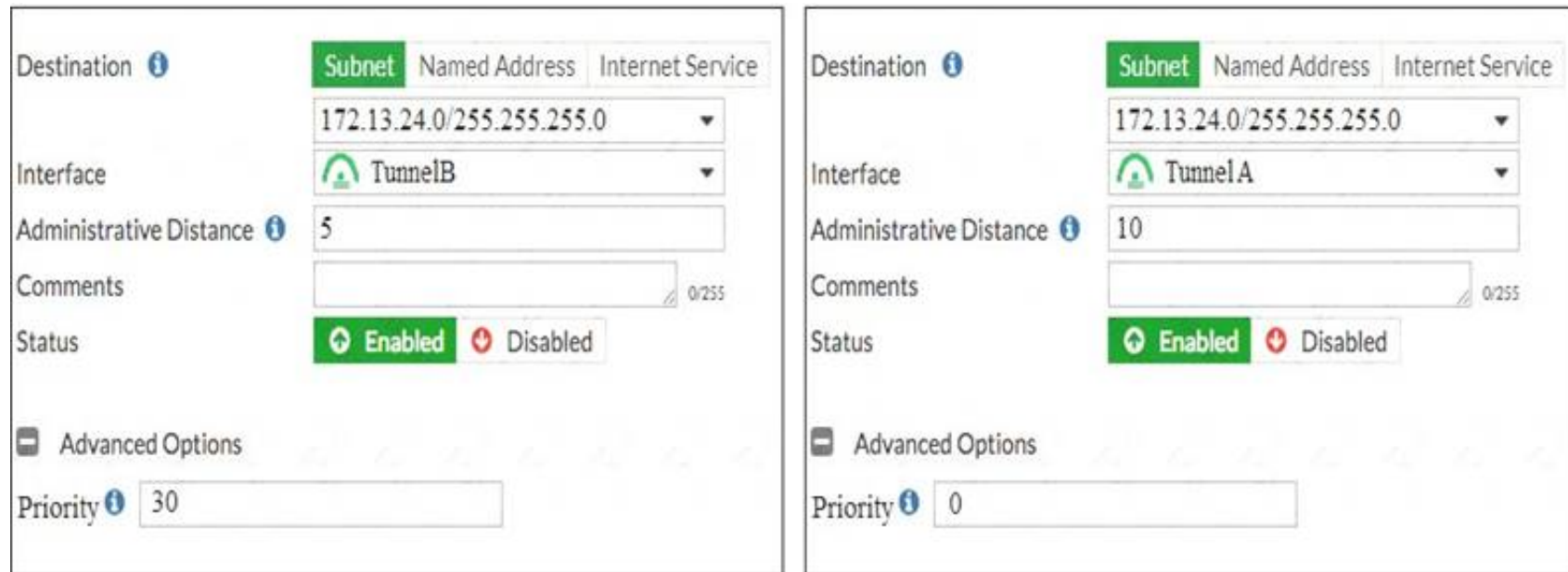
- A. If a Mozilla Firefox browser is used with User-B credentials, the HTTP request will be allowed.
- B. If a Google Chrome browser is used with User-B credentials, the HTTP request will be allowed.
- C. If a Mozilla Firefox browser is used with User-A credentials, the HTTP request will be allowed.
- D. If a Microsoft Internet Explorer browser is used with User-B credentials, the HTTP request will be allowed.

Answer: BD

NEW QUESTION 80

- (Exam Topic 2)

View the exhibit.



Which of the following statements are correct? (Choose two.)

- A. This setup requires at least two firewall policies with the action set to IPsec.
- B. Dead peer detection must be disabled to support this type of IPsec setup.
- C. The TunnelB route is the primary route for reaching the remote sit
- D. The TunnelA route is used only if the TunnelB VPN is down.
- E. This is a redundant IPsec setup.

Answer: CD

NEW QUESTION 85

- (Exam Topic 2)

If Internet Service is already selected as Destination in a firewall policy, which other configuration objects can be selected to the Destination field of a firewall policy?

A User or User Group

- A. IP address
- B. No other object can be added
- C. FQDN address

Answer: B

Explanation:

Reference:

<https://docs.fortinet.com/document/fortigate/6.2.5/cookbook/179236/using-internet-service-in-policy>

NEW QUESTION 89

- (Exam Topic 2)

Refer to the exhibit, which contains a radius server configuration.



An administrator added a configuration for a new RADIUS server. While configuring, the administrator selected the Include in every user group option.

What will be the impact of using Include in every user group option in a RADIUS configuration?

- A. This option places the RADIUS server, and all users who can authenticate against that server, into every FortiGate user group.
- B. This option places all FortiGate users and groups required to authenticate into the RADIUS server, which, in this case, is FortiAuthenticator.
- C. This option places all users into every RADIUS user group, including groups that are used for the LDAP server on FortiGate.
- D. This option places the RADIUS server, and all users who can authenticate against that server, into every RADIUS group.

Answer: A

Explanation:

Reference: <https://docs.fortinet.com/document/fortigate/6.0.0/handbook/634373/authentication-servers>

NEW QUESTION 94

- (Exam Topic 2)

Exhibit:

```
Fortigate # show authentication rule
config authentication rule
edit "NTLM_rule"
set srcaddr "all"
set ip-based disable
set web-auth-cookie enable
next
end
```

Refer to the exhibit to view the authentication rule configuration In this scenario, which statement is true?

- A. IP-based authentication is enabled
- B. Route-based authentication is enabled
- C. Session-based authentication is enabled.
- D. Policy-based authentication is enabled

Answer: C

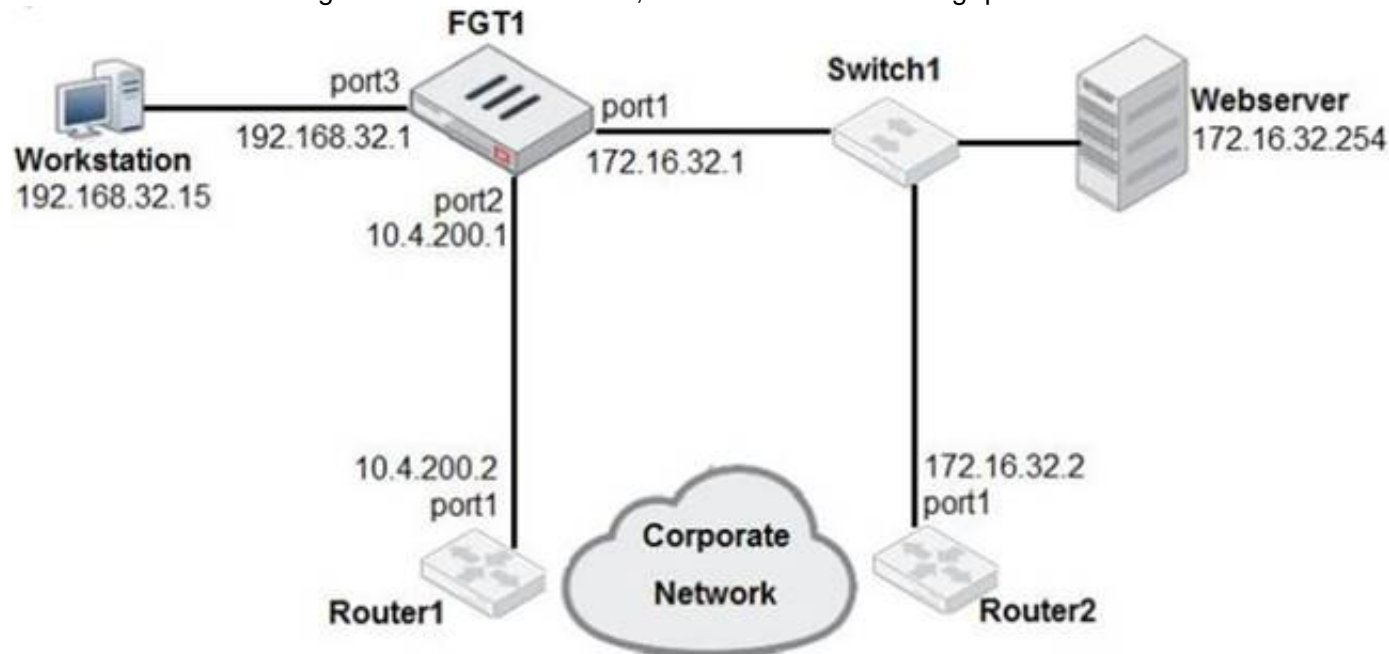
Explanation:

Reference: <https://kb.fortinet.com/kb/documentLink.do?externalID=FD45387>

NEW QUESTION 96

- (Exam Topic 2)

Examine the network diagram shown in the exhibit, then answer the following question:



Which one of the following routes is the best candidate route for FGT1 to route traffic from the Workstation to the Web server?

- A. 172.16.0.0/16 [50/0] via 10.4.200.2, port2 [5/0]
- B. 0.0.0.0/0 [20/0] via 10.4.200.2, port2
- C. 10.4.200.0/30 is directly connected, port2
- D. 172.16.32.0/24 is directly connected, port1

Answer: D

NEW QUESTION 99

- (Exam Topic 2)

Which of the following statements about central NAT are true? (Choose two.)

- A. IP tool references must be removed from existing firewall policies before enabling central NAT.
- B. Central NAT can be enabled or disabled from the CLI only.
- C. Source NAT, using central NAT, requires at least one central SNAT policy.
- D. Destination NAT, using central NAT, requires a VIP object as the destination address in a firewall.

Answer: AB

NEW QUESTION 100

- (Exam Topic 2)

Examine this FortiGate configuration:

```
config authentication setting
    set active-auth-scheme SCHEME1
end
config authentication rule
    edit WebProxyRule
        set srcaddr 10.0.1.0/24
        set active-auth-method SCHEME2
    next
end
```

How does the FortiGate handle web proxy traffic coming from the IP address 10.2.1.200 that requires authorization?

- A. It always authorizes the traffic without requiring authentication.
- B. It drops the traffic.
- C. It authenticates the traffic using the authentication scheme SCHEME2.
- D. It authenticates the traffic using the authentication scheme SCHEME1.

Answer: D

Explanation:

“What happens to traffic that requires authorization, but does not match any authentication rule? The active and passive SSO schemes to use for those cases is defined under config authentication setting”

NEW QUESTION 105

- (Exam Topic 2)

In which two ways can RPF checking be disabled? (Choose two)

- A. Enable anti-replay in firewall policy.
- B. Disable the RPF check at the FortiGate interface level for the source check
- C. Enable asymmetric routing.
- D. Disable strict-arc-check under system settings.

Answer: CD

Explanation:

Reference: <https://kb.fortinet.com/kb/documentLink.do?externalID=FD33955>

NEW QUESTION 108

- (Exam Topic 2)

Refer to the exhibit.

```
1: date=2020-08-14 time=06:28:24 logid= "0316013056" type= "utm" subtype= "webfilter"
eventtype= "ftgd_blk" level= "warning" vd= "root" eventtime= 1597343304867252750
policyid=2 sessionid=83212 srcip=10.0.1.10 srcport=53742 srcintf= "port3" srcintfrole=
"undefined" dstip=159.65.216.232 dstport=443 dstintf= "port1" dstintfrole= "wan" proto=6
service= "HTTPS" hostname= "etp-experiment-1.dummytracker.org" profile= "default"
action= "blocked" reqtype= "direct" url= "https://etp-experiment-1.dummytracker.org/"
sentbyte=517 rcvbyte=0 direction= "outgoing" msg= "URL belongs to a denied category in
policy" method= "domain" cat=26 catdesc= "Malicious Websites" crscore=30 craction=
4194304 crlevel= "high"
```

Based on the raw log, which two statements are correct? (Choose two.)

- A. Traffic is blocked because Action is set to DENY in the firewall policy.
- B. Traffic belongs to the root VDOM.
- C. This is a security log.
- D. Log severity is set to error on FortiGate.

Answer: AC

NEW QUESTION 112

- (Exam Topic 2)

Which two policies must be configured to allow traffic on a policy-based next-generation firewall (NGFW) FortiGate? (Choose two.)

- A. Firewall policy
- B. Policy rule
- C. Security policy
- D. SSL inspection and authentication policy

Answer: CD

Explanation:

Reference: <https://docs.fortinet.com/document/fortigate/5.6.0/cookbook/38324/ngfw-policy-based-mode>

NEW QUESTION 114

- (Exam Topic 2)

In an explicit proxy setup, where is the authentication method and database configured?

- A. Proxy Policy
- B. Authentication Rule
- C. Firewall Policy
- D. Authentication scheme

Answer: D

NEW QUESTION 115

- (Exam Topic 2)

Which three methods are used by the collector agent for AD polling? (Choose three.)

- A. FortiGate polling
- B. NetAPI
- C. Novell API
- D. WMI
- E. WinSecLog

Answer: BDE

Explanation:

Reference: <https://kb.fortinet.com/kb/documentLink.do?externalID=FD47732>

NEW QUESTION 119

- (Exam Topic 2)

If the Services field is configured in a Virtual IP (VIP), which statement is true when central NAT is used?

- A. The Services field prevents SNAT and DNAT from being combined in the same policy.
- B. The Services field is used when you need to bundle several VIPs into VIP groups.
- C. The Services field removes the requirement to create multiple VIPs for different services.
- D. The Services field prevents multiple sources of traffic from using multiple services to connect to a single computer.

Answer: C

NEW QUESTION 121

- (Exam Topic 2)

What is the primary FortiGate election process when the HA override setting is disabled?

- A. Connected monitored ports > System uptime > Priority > FortiGate Serial number
- B. Connected monitored ports > HA uptime > Priority > FortiGate Serial number
- C. Connected monitored ports > Priority > HA uptime > FortiGate Serial number
- D. Connected monitored ports > Priority > System uptime > FortiGate Serial number

Answer: B

Explanation:

Reference: <http://myitmicroblog.blogspot.com/2018/11/what-should-you-know-about-ha-override.html>

NEW QUESTION 123

- (Exam Topic 2)

Which statements are true regarding firewall policy NAT using the outgoing interface IP address with fixed port disabled? (Choose two.)

- A. This is known as many-to-one NAT.
- B. Source IP is translated to the outgoing interface IP.
- C. Connections are tracked using source port and source MAC address.
- D. Port address translation is not used.

Answer: BD

NEW QUESTION 124

- (Exam Topic 2)

If Internet Service is already selected as Source in a firewall policy, which other configuration objects can be added to the Source field of a firewall policy?

- A. IP address
- B. Once Internet Service is selected, no other object can be added
- C. User or User Group
- D. FQDN address

Answer: B

Explanation:

Reference:

<https://docs.fortinet.com/document/fortigate/6.2.5/cookbook/179236/using-internet-service-in-policy>

NEW QUESTION 126

- (Exam Topic 2)

Which downstream FortiGate VDOM is used to join the Security Fabric when split-task VDOM is enabled on all FortiGate devices?

- A. Root VDOM
- B. FG-traffic VDOM
- C. Customer VDOM
- D. Global VDOM

Answer: A

NEW QUESTION 127

- (Exam Topic 2)

Consider the topology:

Application on a Windows machine <--(SSL VPN)-->FGT--> Telnet to Linux server.

An administrator is investigating a problem where an application establishes a Telnet session to a Linux server over the SSL VPN through FortiGate and the idle session times out after about 90 minutes. The administrator would like to increase or disable this timeout.

The administrator has already verified that the issue is not caused by the application or Linux server. This issue does not happen when the application establishes a Telnet connection to the Linux server directly on the LAN.

What two changes can the administrator make to resolve the issue without affecting services running through FortiGate? (Choose two.)

- A. Set the maximum session TTL value for the TELNET service object.
- B. Set the session TTL on the SSLVPN policy to maximum, so the idle session timeout will not happen after 90 minutes.
- C. Create a new service object for TELNET and set the maximum session TTL.
- D. Create a new firewall policy and place it above the existing SSLVPN policy for the SSL VPN traffic, and set the new TELNET service object in the policy.

Answer: CD

NEW QUESTION 128

- (Exam Topic 2)

Which of the following are valid actions for FortiGuard category based filter in a web filter profile ui proxy-based inspection mode? (Choose two.)

- A. Warning
- B. Exempt
- C. Allow
- D. Learn

Answer: AC

NEW QUESTION 131

- (Exam Topic 2)

What is the limitation of using a URL list and application control on the same firewall policy, in NGFW policy-based mode?

- A. It limits the scanning of application traffic to the DNS protocol only.
- B. It limits the scanning of application traffic to use parent signatures only.
- C. It limits the scanning of application traffic to the browser-based technology category only.
- D. It limits the scanning of application traffic to the application category only.

Answer: C

NEW QUESTION 132

- (Exam Topic 2)

An administrator observes that the port1 interface cannot be configured with an IP address. What can be the reasons for that? (Choose three.)

- A. The interface has been configured for one-arm sniffer.
- B. The interface is a member of a virtual wire pair.
- C. The operation mode is transparent.
- D. The interface is a member of a zone.
- E. Captive portal is enabled in the interface.

Answer: ABC

Explanation:

https://help.fortinet.com/fos50hlp/54/Content/FortiOS/fortigate-whats-new-54/Top_VirtualWirePair.htm

NEW QUESTION 135

- (Exam Topic 2)

Which scanning technique on FortiGate can be enabled only on the CLI?

- A. Heuristics scan
- B. Trojan scan
- C. Antivirus scan
- D. Ransomware scan

Answer: A

Explanation:

Reference: <https://docs.fortinet.com/document/fortigate/6.0.0/handbook/567568/enabling-scanning>

NEW QUESTION 138

- (Exam Topic 2)

Which statements about the firmware upgrade process on an active-active HA cluster are true? (Choose two.)

- A. The firmware image must be manually uploaded to each FortiGate.
- B. Only secondary FortiGate devices are rebooted.
- C. Uninterruptable upgrade is enabled by default.
- D. Traffic load balancing is temporally disabled while upgrading the firmware.

Answer: CD

NEW QUESTION 143

- (Exam Topic 2)

Refer to the exhibit.

Field	Value
Version	V3
Serial Number	98765432
Signature algorithm	SHA256RSA
Issuer	cn=RootCA,o=BridgeAuthority, Inc., c=US
Valid from	Tuesday, October 3, 2016 4:33:37 PM
Valid to	Wednesday, October 2, 2019 5:03:37 PM
Subject	cn=John Doe, o=ABC, Inc., c=US
Public key	RSA (2048 bits)
Key Usage	keyCertSign
Extended Key Usage	Server Authentication (1.3.6.1.5.5.7.3.1), Client Authentication (1.3.6.1.5.5.7.3.2)
Basic Constraints	CA=True, Path Constraint=None
CRL Distribution Points	URL=http://webserver.abcinc.com/arlcrl

According to the certificate values shown in the exhibit, which type of entity was the certificate issued to?

- A. A user
- B. A root CA
- C. A bridge CA
- D. A subordinate

Answer: A

NEW QUESTION 145

- (Exam Topic 2)

When browsing to an internal web server using a web-mode SSL VPN bookmark, which IP address is used as the source of the HTTP request?

- A. remote user's public IP address
- B. The public IP address of the FortiGate device.
- C. The remote user's virtual IP address.
- D. The internal IP address of the FortiGate device.

Answer: D

Explanation:

Source IP seen by the remote resources is FortiGate's internal IP address and not the user's IP address

NEW QUESTION 148

.....

Thank You for Trying Our Product

We offer two products:

1st - We have Practice Tests Software with Actual Exam Questions

2nd - Questions and Answers in PDF Format

NSE4_FGT-7.0 Practice Exam Features:

- * NSE4_FGT-7.0 Questions and Answers Updated Frequently
- * NSE4_FGT-7.0 Practice Questions Verified by Expert Senior Certified Staff
- * NSE4_FGT-7.0 Most Realistic Questions that Guarantee you a Pass on Your FirstTry
- * NSE4_FGT-7.0 Practice Test Questions in Multiple Choice Formats and Updatesfor 1 Year

100% Actual & Verified — Instant Download, Please Click
[Order The NSE4_FGT-7.0 Practice Test Here](#)