

Exam Questions N10-007

CompTIA Network+ N10-007

<https://www.2passeasy.com/dumps/N10-007/>



NEW QUESTION 1

- (Exam Topic 1)

A network administrator has been given a network of 172.16.85.0/21 and wants to know the usable range of IP addresses on that subnet. Which of the following indicates the correct IP address range?

- A. 172.16.80.0-172.16.85.254
- B. 172.16.80.0-172.16.88.255
- C. 172.16.80.1-172.16.87.254
- D. 172.16.80.1-172.16.85.255

Answer: C

NEW QUESTION 2

- (Exam Topic 1)

Which of the following would a company place at the edge of its network if it wants to view and control which Internet applications are being used?

- A. VPN concentrator
- B. NGFW
- C. IDS/IPS
- D. Proxy server

Answer: B

NEW QUESTION 3

- (Exam Topic 1)

A UTM is deployed on the external edge of the main corporate office. The office connects to the WAN port of the edge router. The edge router at the main office connects to the remote offices using GRE IPsec tunnels. A network administrator notices that a worm that was not detected by the UTM has spread from the remote sites into the corporate network. The UTM currently has traffic rules applied that should block the port used by the worm. Which of the following steps would MOST likely correct this issue?

- A. Move the UTM onto the LAN side of the network
- B. Enable TLS inspection on the UTM
- C. Enable stateful inspection on the UTM
- D. Configure the UTM to deny encrypted files from being transferred

Answer: C

NEW QUESTION 4

- (Exam Topic 1)

Which of the following DNS record types is an alias?

- A. CNAME
- B. PTR
- C. NS
- D. SRV

Answer: A

NEW QUESTION 5

- (Exam Topic 1)

Which of the following backup techniques is used to capture all the data that has changed since the least full backup?

- A. Incremental
- B. Replica
- C. Different
- D. Snapshot

Answer: C

NEW QUESTION 6

- (Exam Topic 1)

A technician needs to set up a workstation with a private static address. Which of the following IP address would meet this requirement? (Select TWO).

- A. 65.78.90.102
- B. 127.0.0.1
- C. 169.254.90.19
- D. 172.16..1.103
- E. 172.33.47.100
- F. 192.168.1.55

Answer: DE

NEW QUESTION 7

- (Exam Topic 1)

A administrator is troubleshooting a user's intermittent wireless connectivity issue. Other users across the hallway can connect use the wireless network properly.

Upon inspection of the connection details, the administrator finds the following:

SSID	Company-WiFi
Signal	5%
SNR	2

Which of the following is MOST likely the cause of the poor wireless connection?

- A. Channel overlap
- B. Overcapacity
- C. Incorrect antenna type
- D. Latency

Answer: C

NEW QUESTION 8

- (Exam Topic 1)

A Chief Information Officer (CIO) is concentrated about an attacker gaining administrative access to the company's network devices. Which of the following is the MOST secure way to prevent this?

- A. ACL allowing only HTTP
- B. ACL allowing only Telnet
- C. Out-of-band modem
- D. Out-of-band console router

Answer: D

NEW QUESTION 9

- (Exam Topic 1)

Employees want the ability to use personal devices on the guest network while working out at the company gym. In order to meet the request, which of the following policies requires employee adherence?

- A. AUP
- B. SLA
- C. NDA
- D. MOU

Answer: A

NEW QUESTION 10

- (Exam Topic 1)

A technician is installing a new wireless badging system on a hospital network. The requirements of the badging system are for it to have its own SSID and low power levels. The badging system has to cover 99.9% of the hospital. Which of the following is the BEST action to take to meet the system requirements?

- A. Install additional WAPs
- B. Install external antennas
- C. Move the WAPs closer to the more populated area
- D. Change the antenna types

Answer: A

NEW QUESTION 10

- (Exam Topic 1)

An entire enterprise cannot access a specific website. The network technician knows the website was accessible last week. The technician can also ping the website. Which of the following is the technician MOST likely to find upon investigation?

- A. The firewall is misconfigured.
- B. The network is being hit by a zero-day attack.
- C. The SSL certificate is untrusted.
- D. The SSL certificate has expired.

Answer: D

NEW QUESTION 12

- (Exam Topic 1)

A technician must determine if a web page user's visits are connecting to a suspicious website's IP address in the background. Which of the following tools would provide the information on TCP connections?

- A. netstat
- B. tracer
- C. arp
- D. ipconfig
- E. route

Answer: A

NEW QUESTION 13

- (Exam Topic 1)

A technician is sent to a remote office to set up a device to connect to the internet. The company Standard document requires stateful inspection.

Which of the following should the technician install?

- A. ROUTER
- B. Multilayer switch
- C. Firewall
- D. Bridge

Answer: C

NEW QUESTION 15

- (Exam Topic 1)

A technician attempts to replace a switch with a new one of similar model from the same vendor. When the technician moves the fiber and SFP plug, the switch does not completely boot up. Considering that the config files are the same, which of the following is the MOST likely cause of the failure?

- A. Damaged fiber
- B. Corrupted operating system
- C. VLAN mismatch
- D. Bad port

Answer: B

NEW QUESTION 17

- (Exam Topic 1)

In a service provider network, a company has an existing IP address scheme. Company A's network currently uses the following scheme:

```
Subnet 1: 192.168.1.0/26
Subnet 2: 192.168.1.65/26
```

Company b uses the following scheme: Subnet 1: 192.168.1.50/28

The network administrator cannot force the customer to update its IP scheme. Considering this, which of the following is the BEST way for the company to connect these networks?

- A. DMZ
- B. PAT
- C. NAT
- D. VLAN

Answer: C

NEW QUESTION 18

- (Exam Topic 1)

A network technician is setting up a new router. Since it is exposed to the public, which of the following are the BEST steps the technician should take when setting up this device? (Choose two.)

- A. Disable unnecessary services.
- B. Use private IP addresses.
- C. Allow remote management access.
- D. Disable the console port.
- E. Enable encryption.
- F. Upgrade to the latest firmware.

Answer: AF

NEW QUESTION 23

- (Exam Topic 1)

A technician is investigating the cause of a network outage. Which of the following documents should be checked to rule out configuration issues?

- A. Change management records
- B. Inventory management
- C. Network log files
- D. Logical diagrams

Answer: A

NEW QUESTION 28

- (Exam Topic 1)

A technician is troubleshooting network connectivity issues with a remote host. Which of the following tools would BEST inform the technician of nodes between the client and the remote host? (Choose two.)

- A. tracer
- B. ping
- C. tcpdump
- D. pathping
- E. netstat

F. nslookup
G. route

Answer: AD

NEW QUESTION 29

- (Exam Topic 1)

Which of the following are characteristics of jumbo frames? (Choose two.)

- A. Commonly used on SAN
- B. MTU size greater than 1500
- C. MTU size greater than 10000
- D. Commonly used on IaaS
- E. MTU size greater than 12000

Answer: AB

NEW QUESTION 30

- (Exam Topic 1)

A network engineer planning for wireless connectivity in large office building. Currently, the office building contains both legacy and newer devices.

Which of the following wireless network routers should engineer select for the fastest throughput for all wireless devices in the office building?

- A. 802.11ac
- B. 802.11b
- C. 802.11g
- D. 802.11n

Answer: A

Explanation:

<https://www.forbes.com/forbes/welcome/?toURL=https://www.forbes.com/sites/gordonkelly/2014/12/30/802-11>

NEW QUESTION 35

- (Exam Topic 1)

A network technician downloaded new firmware for the company firewall. Which of the following should the network technician verify to ensure the downloaded file is correct and complete?

- A. File hash
- B. File date
- C. File type
- D. File size

Answer: A

NEW QUESTION 40

- (Exam Topic 1)

Which of the following provides the ability to deploy consistent access point configurations from a central location?

- A. Wireless controller
- B. AAA server
- C. WiFi-protected setup
- D. Proxy server
- E. VPN concentrator

Answer: A

NEW QUESTION 42

- (Exam Topic 1)

Which of the following is the correct port number for NTP?

- A. 25
- B. 69
- C. 123
- D. 161

Answer: C

NEW QUESTION 47

- (Exam Topic 1)

A network administrator wishes to ensure there are no unnecessary open communication paths into a server. Using a port scanner, the administrator finds that ports are reported as closed. Which of the following BEST explains this response?

- A. The ports belong to an active system and are denying requests
- B. The ports are associated with deprecated services
- C. The ports do not belong to a live system
- D. The ports replied with a SYN/ACK response

Answer: B

NEW QUESTION 48

- (Exam Topic 1)

A technician needs to upgrade a SOHO wireless router's firmware. The technician resets the router to factory settings and installs the new firmware. The technician enters the DHCP information and sets the SSID. Which of the following configurations would provide the MOST protection from advance hackers?

- A. Disable the broadcasting of the SSID.
- B. Enable WPA2 authentication for all hosts.
- C. Use private addressing for the DHCP scope.
- D. Install unidirectional antennas.

Answer: B

NEW QUESTION 53

- (Exam Topic 1)

A company recently upgraded all of its printers to networked multifunction devices. Users can print to the new devices, but they would also like the ability to scan and fax files from their computers. Which of the following should the technician update to allow this functionality?

- A. Device software
- B. Printer drivers
- C. Printer firmware
- D. NIC drivers

Answer: C

NEW QUESTION 58

- (Exam Topic 1)

A network technician is implementing a solution on the network to hide the workstation internal IP addresses across a WAN. Which of the following is the technician configuring?

- A. QoS
- B. DMZ
- C. RIP
- D. NAT

Answer: D

NEW QUESTION 61

- (Exam Topic 1)

A network technician is configuring a firewall access list to secure incoming connections to an email server. The internal address of this email server is 192.168.1.143. The firewall should allow external email servers to send email to the email server. The email server also supports client access via a web browser. Only secure protocols should be used, and only the necessary ports should be open. Which of the following ACL rules should be configured in the firewall's WAN port? (Choose two.)

- A. Permit 192.168.1.143.25
- B. Permit 192.168.1.143.80
- C. Permit 192.168.1.143.110
- D. Permit 192.168.1.143.143
- E. Permit 192.168.1.143.443
- F. Permit 192.168.1.143.587

Answer: EF

NEW QUESTION 62

- (Exam Topic 1)

Which of the following datacenter security methodologies is MOST likely to remain usable during a network outage?

- A. biometric scanners
- B. door locks
- C. video surveillance
- D. motion detectors

Answer: B

NEW QUESTION 66

- (Exam Topic 1)

A network administrator frequently needs to assist users with troubleshooting network hardware remotely, but the users are non-technical and unfamiliar with network devices. Which of the following would BEST help the administrator and users during hands-on troubleshooting?

- A. Logical diagrams
- B. MDF documentation
- C. Equipment labeling
- D. Standard operating procedures

Answer: D

NEW QUESTION 69

- (Exam Topic 1)

A network technician receives a call from a user who is experiencing network connectivity issues. The network technician questions the user and learns the user brought in a personal wired router to use multiple computers and connect to the network. Which of the following has the user MOST likely introduced to the network?

- A. Rogue DHCP server
- B. Evil twin
- C. VLAN mismatch
- D. Honey pot

Answer: A

NEW QUESTION 70

- (Exam Topic 1)

A technician is observing brownout issue at a smaller office. At least once a week, the edge switch power cycles. Which of the following should the technician do to resolve the issue?

- A. Install a new switch.
- B. Install a UPS.
- C. Replace the switch uplink cable.
- D. Install a new electrical circuit.

Answer: B

NEW QUESTION 74

- (Exam Topic 1)

A technician is configuring a printer for a client. The technician types the IP address to the network, but is unsure how to determine its switch port. Which of the following should the technician do FIRST to locate the switch port?

- A. Perform a DNS lookup on the server.
- B. Set up a SSH session to the desktop.
- C. Reference the ARP table in the router.
- D. Configure port security on the switch.

Answer: D

NEW QUESTION 79

- (Exam Topic 1)

An ISP technician gets a call from a business that just changed equipment but can no longer connect to the Internet. The technician checks the ARP table on the ISP switch, and there is no corresponding MAC address present. Instead, the entry is "Incomplete". Which of the following could cause this condition?

- A. VLAN mismatch
- B. Duplex/Speed mismatch
- C. Duplicate IP address
- D. TX/RX reverse

Answer: B

NEW QUESTION 83

- (Exam Topic 1)

A network technician wants to remotely and securely access the desktop of a Linux workstation. The workstation is running remote control software without encryption. Which of the following should the technician use to secure the connection?

- A. SSH in tunnel mode
- B. RDP set to console connection
- C. EAP-PEAP
- D. SFTP

Answer: A

NEW QUESTION 87

- (Exam Topic 1)

A technician is utilizing SNMPv3 to monitor network statistics. Which of the following actions would occur immediately if a server's utilization spikes above the prescribed value?

- A. A trap message is sent via UDP to the monitoring workstation.
- B. The SET function pushes an alert to the MIB database.
- C. The object identifier is modified and reported during the next monitoring cycle.
- D. A response message is sent from the agent to the manager.

Answer: A

NEW QUESTION 88

- (Exam Topic 1)

A technician is setting up a direct connection between two older PCs so they can communicate but not be on the corporate network. The technician does not have access to a spare switch but does have spare Cat 6 cables, RJ-45 plugs, and a crimping tool. The technician cuts off one end of the cable. Which of the following

should the technician do to make a crossover cable before crimping the new plug?

- A. Reverse the wires leading to pins 1 and 2
- B. Reverse the wires leading to pins 1 and 3
- C. Reverse the wires leading to pins 2 and 3
- D. Reverse the wires leading to pins 2 and 4

Answer: D

NEW QUESTION 91

- (Exam Topic 1)

The server team has just installed an application across three different servers. They are asking that all requests to the application are spread evenly across the three servers. Which of the following should the network team implement to fulfil the request?

- A. Proxy server
- B. UTM appliance
- C. Content filter
- D. Load balancer

Answer: D

NEW QUESTION 96

- (Exam Topic 1)

Which of the following protocols authenticates a PC to the server using a ticket issued to it by the authentication service?

- A. Kerberos
- B. RADIUS
- C. TACACS+
- D. LDAP

Answer: A

NEW QUESTION 100

- (Exam Topic 1)

A technician is working on a new machine that has been procured for testing and development. The machine will run a hypervisor and host several operating systems of various types so the development team can test the company's applications in a variety of environments. The technician wants the virtual machines to be available to communicate with each other without leaving the hypervisor. Which of the following is the BEST solution to the problem?

- A. The technician should connect the machine to its own separate switch.
- B. The technician should add a route in each virtual machine to the default gateway.
- C. The technician should configure a virtual switch.
- D. The technician should set up individual routes between the machines.

Answer: C

NEW QUESTION 104

- (Exam Topic 1)

A network technician notices the site-to-site VPN and Internet connection have not come back up at a branch office after a recent power outage. Which of the following is an out-of-band method the technician would MOST likely utilize to check the branch office's router status?

- A. Use a modem to console into the router
- B. Walk a user through troubleshooting the connection
- C. Travel to the branch office
- D. Hire a contractor to go on-site

Answer: A

NEW QUESTION 108

- (Exam Topic 1)

A network engineer arrives at work and discovers that many users are having problems when attempting to connect to the company network shared drives. The network operations center (NOC) technician just completed server upgrades the night before. To which of the following documents should the NOC technician refer to determine what potentially caused the connectivity problem?

- A. Network maps
- B. Cable management
- C. Release notes
- D. Change management

Answer: D

NEW QUESTION 110

- (Exam Topic 1)

A junior network technician is setting up a new email server on the company network. Which of the following default ports should the technician ensure is open on the firewall so the new email server can relay email?

- A. 23
- B. 25

C. 110
D. 143

Answer: B

NEW QUESTION 115

- (Exam Topic 1)

A firewall administrator is implementing a rule that directs HTTP traffic to an internal server listening on a non-standard socket. Which of the following types of rules is the administrator implementing?

A. NAT
B. PAT
C. STP
D. SNAT
E. ARP

Answer: B

NEW QUESTION 119

- (Exam Topic 1)

The process of attempting to exploit a weakness in a network after being given permission by the company is known as:

A. penetration testing
B. vulnerability scanning
C. reconnaissance
D. social engineering

Answer: A

NEW QUESTION 124

- (Exam Topic 1)

The Chief Information Officer (CIO) has noticed the corporate wireless signal is available in the parking lot. Management requests that the wireless network be changed so it is no longer accessible in public areas, without affecting the availability inside the building. Which of the following should be changed on the network?

A. Power levels
B. Overcapacity
C. Distance limitations
D. Channel overlap

Answer: A

NEW QUESTION 129

- (Exam Topic 1)

The IT manager at a small firm is in the process of renegotiating an SLA with the organization's ISP. As part of the agreement, the organization will agree to a dynamic bandwidth plan to provide 150Mbps of bandwidth.

However, if the ISP determines that a host on the organization's internal network produces malicious traffic, the ISP reserves the right to reduce available bandwidth to 1.5 Mbps. Which of the following policies is being agreed to in the SLA?

A. Session hijacking
B. Blocking
C. Throttling
D. Data usage limits
E. Bandwidth quotasf

Answer: C

NEW QUESTION 134

- (Exam Topic 1)

Which of the following WAN technologies utilizes the concept of virtual circuits and point-multipoint connections?

A. ISDN
B. MPLS
C. PRI
D. Broadband cable
E. Frame relay

Answer: E

NEW QUESTION 137

- (Exam Topic 1)

Which of the following is a reason why a business may be hesitant to move sensitive data to a SaaS cloud service?

A. Decreased performance of internal network
B. Loss of full control over data resources
C. Increased malware exposure
D. Incompatibility with the current network

Answer: B

NEW QUESTION 140

- (Exam Topic 1)

Based on networks 10.8.16.0/22 and 10.8.31.0/21, which of the following is the BEST summarized CIDR notation?

- A. 10.8.0.0/16
- B. 10.8.0.0/19
- C. 10.8.0.0/20
- D. 10.0.0.0/24

Answer: A

NEW QUESTION 145

- (Exam Topic 1)

A recently constructed building makes use of glass and natural light. Users in the building are reporting poor cellular connectivity and speeds. Which of the following is MOST likely the cause?

- A. Absorption
- B. Channel overlap
- C. Reflection
- D. Frequency mismatch

Answer: C

NEW QUESTION 147

- (Exam Topic 1)

A network administrator wants to increase the confidentiality of the system by hardening the authentication process. Currently, the users log in using usernames and passwords to access the system. Which of the following will increase the authentication factor to three?

- A. Adding a fingerprint reader to each workstation and providing a RSA authentication token
- B. Adding a fingerprint reader and retina scanner
- C. Using a smart card and RSA token
- D. Enforcing a stronger password policy and using a hand geometry scan

Answer: A

NEW QUESTION 151

- (Exam Topic 1)

A network administrator wants to employ a username and password authentication system for guest WiFi. Which of the following is the BEST option to provide this type of authentication?

- A. port security
- B. MAC filtering
- C. Network access control
- D. Captive portal

Answer: D

NEW QUESTION 153

- (Exam Topic 1)

A small town is attempting to attract tourists who visit larger nearby cities. A network engineer is asked to implement a network encompassing the five-block town center and nearby businesses. The inclusion of smartphones and portable devices is crucial to the plan. Which of the following is the network engineer being asked to implement?

- A. LAN
- B. PAN
- C. MAN
- D. WAN

Answer: C

NEW QUESTION 155

- (Exam Topic 1)

In which of the following ways does a DDoS attack differ from a spoofing attack?

- A. DDoS attacks target multiple networks
- B. Spoofing attacks originate from a single host
- C. DDoS attacks are launched from multiple hosts
- D. Spoofing attacks require physical presence

Answer: C

NEW QUESTION 158

- (Exam Topic 1)

A network technician is able to connect the switches between to offices, but the offices cannot communicate with each other, as each office uses a different IP addressing scheme. Which of the following devices needs to be installed between the switches to allow communication?

- A. Bridge
- B. Access point
- C. Router
- D. Range extender

Answer: C

NEW QUESTION 163

- (Exam Topic 1)

A network engineer is designing a new IDF in an old building. The engineer determines the equipment will fit in a two-post rack, and there is power available for this equipment. Which of the following would be the FIRST issue to remediate?

- A. Air flow and cooling
- B. UPS capability
- C. Circuit labeling
- D. Power redundancy

Answer: A

NEW QUESTION 168

- (Exam Topic 1)

A technician is replacing a switch at a branch office and discovers the existing backbone cable does not fit in the new switch. The fiber patch panel has circular connections. The new switch has a transceiver that accepts a smaller square adapter of two strands. Which of the following patch cables would the technician need to complete the installation?

- A. LC to SC
- B. SC to ST
- C. LC to ST
- D. ST to ST
- E. SC to SC

Answer: C

NEW QUESTION 170

- (Exam Topic 1)

A technician is replacing a failed SOHO router for a customer who has an existing, cable modem, and static IP address. The user has a web server that faces the Internet so users can visit and leave comments. Which of the following BEST describes the correct configuration for this customer's requirements?

- A. The modem is placed in bridge mode, the router is placed behind the modem, and the web server is placed behind the router.
- B. The router is place in bridge in mode, the modem is placed behind the router, and the web server ids placed behind the modem.
- C. the web server is placed in bridge mode, the router is placed behind the server, and the modem is placed behind the router.
- D. The switch is placed in bridge mode, the modem is placed behind the switch, and the router is placed behind the modem.

Answer: A

NEW QUESTION 172

- (Exam Topic 1)

Which of the following are DNS record type? (Select THREE).

- A. CNAME
- B. NTP
- C. PTR
- D. LDAP
- E. DHCP
- F. TTL
- G. SRV
- H. SSH

Answer: ACG

NEW QUESTION 176

- (Exam Topic 1)

Which of the following VPN protocols establishes a secure session that can be initiated using a browser?

- A. IPSec
- B. SSL VPN
- C. PTP
- D. PPTP

Answer: B

NEW QUESTION 178

- (Exam Topic 1)

While working on a Linux-based OS, a technician experiences an issue accessing servers and some sites by name. Which of the following command-line tools

should the technician use to assist in troubleshooting?

- A. dig
- B. iptables
- C. ifconfig
- D. traceroute

Answer: A

NEW QUESTION 181

- (Exam Topic 1)

A network administrator is assigned to run and connect a Cat 6e Ethernet cable between two nodes in a datacenter. Which of the following connector types should the network administrator use to terminate this cable?

- A. DB-9
- B. RS-232
- C. DB-25
- D. RJ-45

Answer: D

NEW QUESTION 186

- (Exam Topic 1)

A network technician performs a wireless site survey at a company building and identifies that the cafeteria is not covered by a wireless signal. The cafeteria is located in a medium-size, square-shaped room. Which of the following types of WAP antenna should the technician install in the center of the cafeteria to provide the BEST coverage?

- A. Unidirectional
- B. Parabolic
- C. Omnidirectional
- D. Yagi

Answer: C

NEW QUESTION 189

- (Exam Topic 1)

A network technician is installing a new SOHO branch office that requires the use of a DOCSIS-compatible. The modem needs to be connected to the ISP's network at the demark. Which of the following cable type should be used?

- A. UTP
- B. Multimode
- C. Coaxial
- D. Serial

Answer: C

NEW QUESTION 190

- (Exam Topic 1)

Which of the following would be the MOST efficient subnet mask for a point-to-point link?

- A. /28
- B. /29
- C. /31
- D. /32

Answer: C

NEW QUESTION 194

- (Exam Topic 1)

A Chief Information Officer (CIO) wants to move some IT services to a cloud service offering. However, the network administrator still wants to be able to control some parts of the cloud service's networking components. Which of the following should be leveraged to complete this task?

- A. IaaS
- B. PaaS
- C. SaaS
- D. DaaS

Answer: B

NEW QUESTION 195

- (Exam Topic 1)

Which of the following protocols can be both connection-oriented and connectionless?

- A. 20 FTP
- B. 53 DNS
- C. 67 DHCP
- D. 80 HTTP

Answer: B

NEW QUESTION 199

- (Exam Topic 1)

A technician is trying to configure a previously owned WAP. The technician successfully logs into the administrative console and attempts to input the IP address on the WAP. However, the WAP is not accepting the command. Which of the following is causing the problem?

- A. The WAP antenna is damaged
- B. The WAP transmitter light is dim
- C. The terminal emulation software is misconfigured
- D. The LWAPP image is installed on the WAP

Answer: C

NEW QUESTION 202

- (Exam Topic 1)

A company has a web-based application that is used by many different departments. The company has experienced some overload of resources on the database server. The network administrator implements a network device in between the servers and the database. Which of the following BEST describes the purpose of this device?

- A. Content filtering and network analysis
- B. Load balancing and providing high availability
- C. Port sniffing and protocol analysis
- D. Clustering and NIC teaming

Answer: B

NEW QUESTION 204

- (Exam Topic 1)

Joe, an employee at a large regional bank, wants to receive company email on his personal smartphone and table: To authenticate on the mail server, he must first a custom security application on those mobile services. Which of the following policies would BEST enforce this requirement?

- A. Incident response policy
- B. BYOD policy
- C. DLP policy
- D. Remote access policy

Answer: B

NEW QUESTION 209

- (Exam Topic 1)

Which of the following is networking stand-alone hardware that will permit any WIFI-compliant to connect to a wired network?

- A. Wireless hub
- B. Wireless firewall
- C. Wireless access point
- D. Wireless bridge

Answer: C

NEW QUESTION 213

- (Exam Topic 1)

A technician has been alerted of incoming HTTP traffic on the LAN segment that should not contain any web server's The technician has the IP address of the destination host and wants to determine if the socket for HTTP is open. Which of the following should the technician perform?

- A. Baseline assessment
- B. packet analysis
- C. portscan
- D. Patch-level assessment.

Answer: C

NEW QUESTION 216

- (Exam Topic 1)

A network technician is troubleshooting an end-user connectivity problem. The network technician goes to the appropriate IDF but is unable to identify the appropriate cable due to poor labeling. Which of the following should the network technician use to help identify the appropriate cable?

- A. Tone generator
- B. Multimeter
- C. OTDR
- D. Loopback adapter

Answer: A

NEW QUESTION 221

- (Exam Topic 1)

A user reports that a laptop cannot connect to the Internet despite the fact the wireless Internet was functioning on it yesterday. The user did not modify the laptop in any way, and the wireless Internet is functional on other users' laptops. Which of the following issues should be reviewed to help the user to connect to the wireless network?

- A. Wireless switch toggled off
- B. WAP settings
- C. WLAN IP address out of scope
- D. Wireless controller misconfiguration

Answer: A

NEW QUESTION 223

- (Exam Topic 1)

Which of the following WAN technologies is MOST preferred when developing a VoIP system with 23 concurrent channels?

- A. DSL
- B. POTS
- C. T1
- D. DOCSIS

Answer: C

NEW QUESTION 227

- (Exam Topic 1)

A computer lab on a campus network was recently reconfigured using recycled network cables. One of the 24 computers in the lab is unable to connect to the network after the upgrade. A network technician successfully uses the cable in question to connect directly to another computer. Which of the following is MOST likely issue with the cable?

- A. The cable is a crossover cable
- B. The cable is rollover cable
- C. The cable has bent pins
- D. The cable is a Cat 5 cable

Answer: A

NEW QUESTION 230

- (Exam Topic 1)

A technician is setting up VoIP phones on a wireless network. Users report that calls are choppy and sometimes dropped. The technician has measured two characteristics using simple command-line tools that verify the problem. Which of the following characteristics did the technician measure? (Choose two.)

- A. Reflection
- B. Latency
- C. Interference
- D. Packet loss
- E. Signal-to-noise ratio
- F. Attenuation

Answer: BD

NEW QUESTION 231

- (Exam Topic 1)

A network administrator has had difficulty keeping track of IP address assignments on networking devices and clients recently. Which of the following is the BEST technology to aid in this scenario?

- A. DNS
- B. DHCP
- C. IPAM
- D. NTP

Answer: C

NEW QUESTION 236

- (Exam Topic 1)

Which of the following concepts would BEST describe when a company chooses to use a third-party vendor to host and administer critical application?

- A. SaaS
- B. IaaS
- C. PaaS
- D. CASB

Answer: C

NEW QUESTION 237

- (Exam Topic 1)

According to the OSI model, at which of the following layers is data encapsulated into a packet?

- A. Layer 2
- B. Layer 3
- C. Layer 4
- D. Layer 5
- E. Layer 6

Answer: B

NEW QUESTION 240

- (Exam Topic 1)

A technician notices clients are receiving a 169.254.x.x IP address following the upgrade of a server. Which of the following ports should the technician check on the local server firewall?

- A. ports 20 and 21
- B. ports 67 and 68
- C. ports 80 and 443
- D. port 123 and 8080

Answer: B

NEW QUESTION 244

- (Exam Topic 1)

Which of the following physical security controls is MOST likely to be susceptible to a false positive?

- A. Identification card
- B. Biometric device
- C. Proximity reader
- D. Video camera

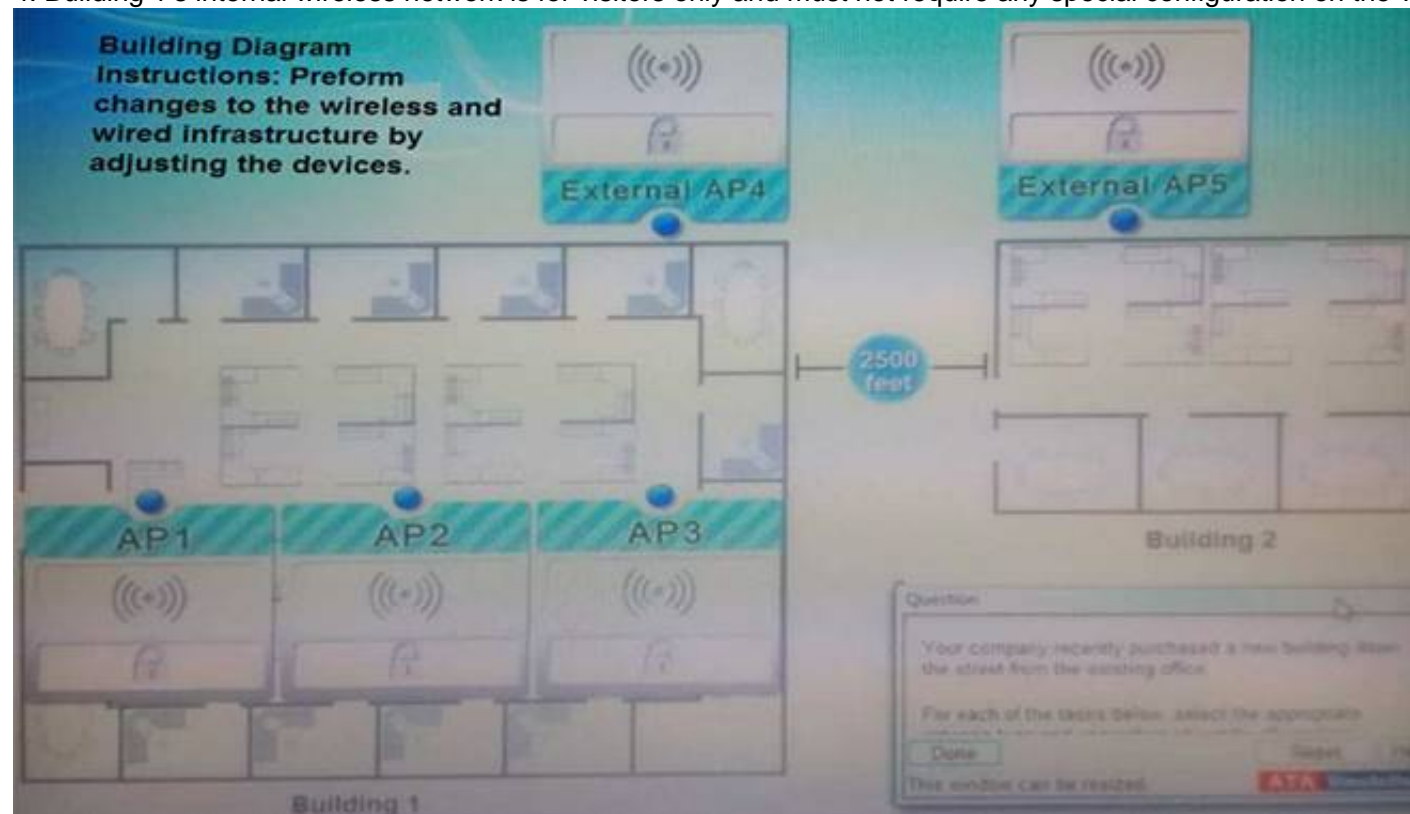
Answer: C

NEW QUESTION 249

- (Exam Topic 1)

Your company recently purchased a new building down the street from the existing office. For each of the tasks below, select the appropriate antenna type and encryption object for all wireless access point (AP).

1. Create an encrypted wireless connection between the two buildings that BEST controls signal propagation, while maximizing security.
2. Restrict the wireless signal generated by the access points (APs) inside Building 1, so that it minimizes broadcast beyond the building.
3. Maximize wireless coverage inside Building 1.
4. Building 1's internal wireless network is for visitors only and must not require any special configuration on the visitor's device to connect.



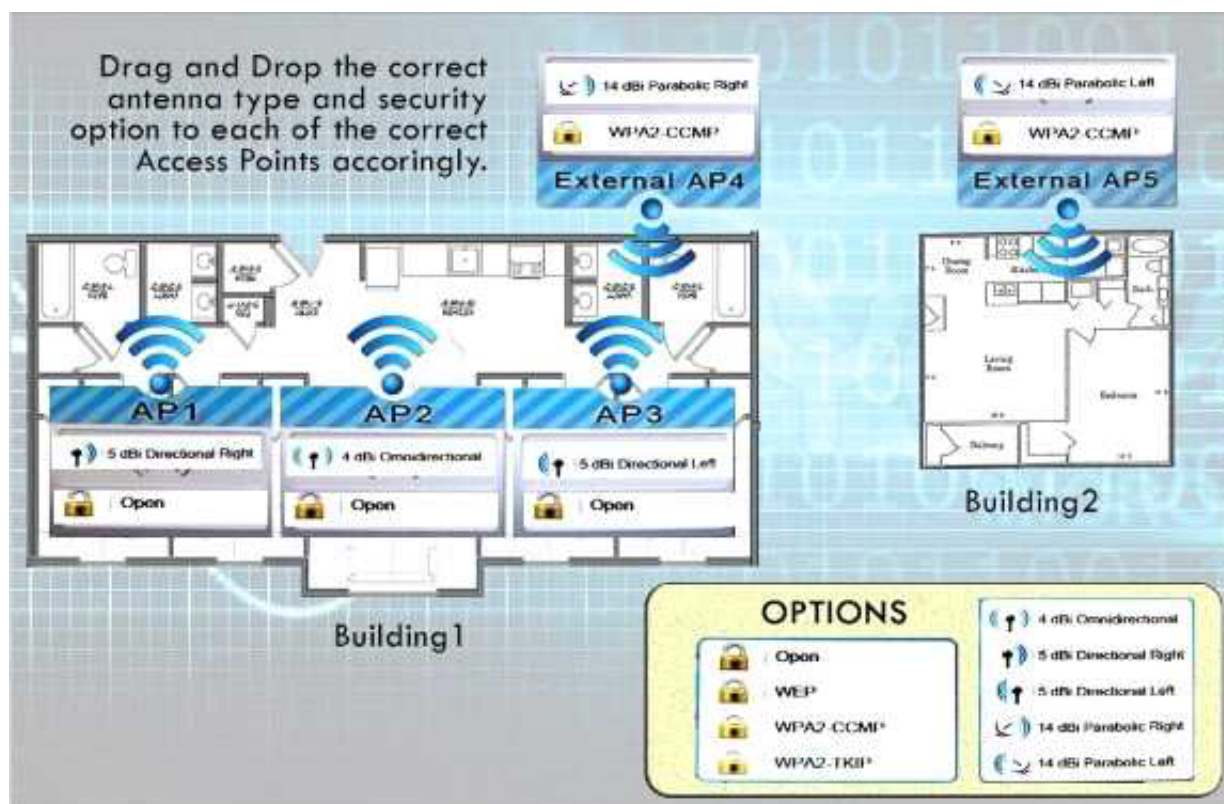
Instructions: When you have completed the simulation, select the Done button to submit.

- A. Mastered
- B. Not Mastered

Answer: A

Explanation:

Answer is as below in image.



NEW QUESTION 250

- (Exam Topic 1)

A network technician is building a network for a small office. The office currently has cable TV and now requires access to the Internet without adding any cabling other than what is already in place. Which of the following solutions should the technician install to meet these requirements?

- A. DOCSIS modem
- B. Wireless router
- C. DSL modem
- D. Access point

Answer: A

NEW QUESTION 253

- (Exam Topic 2)

Zach, a technician, is installing an 802.11n network. Which of the following should he disable to stop broadcasting the network name?

- A. Channel
- B. WEP
- C. SSID
- D. WPA

Answer: C

NEW QUESTION 254

- (Exam Topic 2)

Tenants access multiple wireless networks in a building. Users report intermittent connectivity. Which of the following is the MOST likely cause of the problem?

- A. The channels are overlapping with other wireless networks and should be changed.
- B. The SSIDs are incompatible and should be renamed.
- C. The users have incompatible wireless network cards and should upgrade.
- D. The default idle period for logoff is too short and should be changed to a longer limit.

Answer: A

NEW QUESTION 259

- (Exam Topic 2)

Lisa, a technician, is asked to not allow FTP traffic on a network. Which of the following ports should be blocked on the firewall to achieve this?

- A. 21
- B. 22
- C. 23
- D. 25

Answer: A

NEW QUESTION 264

- (Exam Topic 2)

Which of the following connector types would Sandy, a network technician, use to connect a serial cable?

- A. RJ-11
- B. BNC
- C. LC
- D. DB-9

Answer: D

NEW QUESTION 268

- (Exam Topic 2)

Jeff, an administrator, has just finished installing a new switch and connected two servers with IPs of 192.168.105.20 and .30. The servers are able to communicate with each other, but are unable to reach the Internet. Jeff sees the following information in the switch configuration:

```
interface VLAN 105
```

```
IP address 192.168.105.5 255.255.255.0
```

Jeff is able to ping the router at 192.168.105.1 from the switch. Which of the following is the MOST likely cause of the problem?

- A. The subnet mask is incorrect.
- B. A routing loop has occurred.
- C. Jeff used a crossover cable to connect the switch to the gateway.
- D. The server is missing default-gateway information.

Answer: D

NEW QUESTION 271

- (Exam Topic 2)

Which of the following cable types have a rated MAXIMUM bandwidth of 100Mbps?

- A. CAT3
- B. CAT5
- C. CAT5e
- D. CAT6

Answer: B

NEW QUESTION 275

- (Exam Topic 2)

Which of the following has a maximum transfer rate of 54Mbps and operates at the 5GHz frequency?

- A. 802.11a
- B. 802.11b
- C. 802.11g
- D. 802.11n

Answer: A

NEW QUESTION 278

- (Exam Topic 2)

Which of the following is a secure way to connect to a device?

- A. RSH
- B. TFTP
- C. SNMPv2
- D. SFTP

Answer: D

NEW QUESTION 283

- (Exam Topic 2)

attempting to access a popular website. Which of the following will MOST likely correct the error?

- A. HTTP uses UDP
- B. DNS port 23 needs to be allowed
- C. HTTP needs port 443 allowed
- D. UDP port 53 needs to be allowed

Answer: D

NEW QUESTION 285

- (Exam Topic 2)

Which of the following devices should be installed on a network to monitor the presence of and actively defend against attacks?

- A. An IPS
- B. A protocol analyzer
- C. A traffic shaper
- D. An IDS

Answer: A

NEW QUESTION 287

- (Exam Topic 2)

Which of the following are network topologies? (Select TWO).

- A. Ethernet
- B. Duplex
- C. Star
- D. Circular
- E. Bus

Answer: CE

NEW QUESTION 290

- (Exam Topic 2)

Which of the following cables will MOST likely be used to connect to a satellite dish?

- A. RG-6
- B. CAT5e
- C. Fiber
- D. CAT6

Answer: A

NEW QUESTION 294

- (Exam Topic 2)

Which of the following BEST describes how a layer 2 switch functions?

- A. Switches packets within the same subnet based on MAC addresses
- B. Switches packets between different subnets based on IP addresses
- C. Switches packets between different subnets based on MAC addresses
- D. Switches packets between different subnets based on MAC addresses

Answer: A

NEW QUESTION 297

- (Exam Topic 2)

In order to reduce spam email, Kim, a network administrator, changes the standard SMTP port from which of the following port numbers to port number 587?

- A. 20
- B. 21
- C. 23
- D. 25

Answer: D

NEW QUESTION 301

- (Exam Topic 2)

Lisa, a network administrator, needs to allow all websites to be accessible by the sales team for business purposes. Which of the following ports need to be enabled on the firewall? (Select TWO).

- A. 23
- B. 25
- C. 53
- D. 80
- E. 443

Answer: DE

NEW QUESTION 305

- (Exam Topic 2)

A computer on VLAN 10 with the IP address of 192.168.1.45/27 cannot ping a computer on VLAN 20 with the IP address of 192.168.1.65/27. Which configuration change will allow the PING to be successful?

- A. Replace the router with a Layer 2 switch that supports VLANs
- B. Change VLAN 20 computers Default Gateway to 192.168.1.127/27
- C. Change VLAN 10 computers Default Gateway to 192.168.1.32/27
- D. Allow ICMP to pass through the Router

Answer: D

NEW QUESTION 306

- (Exam Topic 2)

Which of the following is a purpose of a VLAN?

- A. Decreases bandwidth on a network
- B. Segments broadcast traffic
- C. Increases port speed
- D. Allows another connection to the router

Answer: B

NEW QUESTION 308

- (Exam Topic 2)

Which of the following is used to assign an IP address to a device?

- A. DHCP
- B. NTP
- C. DNS
- D. RADIUS

Answer: A

NEW QUESTION 311

- (Exam Topic 2)

Which of the following is a proprietary routing protocol?

- A. RIP
- B. EIGRP
- C. OSPF
- D. BGP

Answer: B

NEW QUESTION 315

- (Exam Topic 2)

Privilege creep among long-term employees can be mitigated by which of the following procedures?

- A. User permission reviews
- B. Mandatory vacations
- C. Separation of duties
- D. Job function rotation

Answer: A

NEW QUESTION 316

- (Exam Topic 2)

Which of the following protocols are used to connect devices in a secure manner? (Select TWO).

- A. TELNET
- B. SSH
- C. RDP
- D. HTTP
- E. DNS
- F. FTP

Answer: BC

NEW QUESTION 318

- (Exam Topic 2)

Matt, an administrator, notices a flood fragmented packet and retransmits from an email server. After disabling the TCP offload setting on the NIC, Matt sees normal traffic with packets flowing in sequence again. Which of the following utilities was he MOST likely using to view this issue?

- A. Spam filter
- B. Protocol analyzer
- C. Web application firewall
- D. Load balancer

Answer: B

NEW QUESTION 320

- (Exam Topic 2)

Which of the following routing protocols relies on hop count as its ONLY metric?

- A. BGP
- B. EIGRP
- C. OSPF
- D. RIP

Answer: D

NEW QUESTION 321

- (Exam Topic 2)

Jeff, a technician, has been asked to add a subnet to the company's LAN. Which of the following interfaces on the router will be modified?

- A. FastEthernet 0/0
- B. AUX 0
- C. Console 0
- D. Serial 0/0/0

Answer: A

NEW QUESTION 326

- (Exam Topic 2)

When querying a DNS server for an AAAA record, which of the following is an appropriate response?

- A. 192.168.2.1
- B. 00:f3:82:99:a2:b8
- C. 61.23.168.192.in-addr.arpa
- D. 3ffe:1900:4545:3:200:f8ff:fe21:67cf

Answer: D

NEW QUESTION 330

- (Exam Topic 2)

Which of the following access controls enforces permissions based on data labeling at specific levels?

- A. Mandatory access control
- B. Separation of duties access control
- C. Discretionary access control
- D. Role based access control

Answer: A

NEW QUESTION 331

- (Exam Topic 2)

A technician discovers that a malware infection has damaged part of the Windows TCP/IP stack. Which of the following commands can help repair the damage?

- A. netsh lan
- B. netsh interface
- C. netsh wlan
- D. netsh winsock

Answer: D

NEW QUESTION 334

- (Exam Topic 2)

A pest control contractor attempts to gain access to the datacenter; however, the manager on duty notes that a pest control inspection was not on the schedule. Which of the following attacks is in progress?

- A. Phishing
- B. Social engineering
- C. Man-in-the-middle
- D. Smurfing

Answer: B

NEW QUESTION 338

- (Exam Topic 2)

Which of the following is used to provide hot standby capabilities using paired routers?

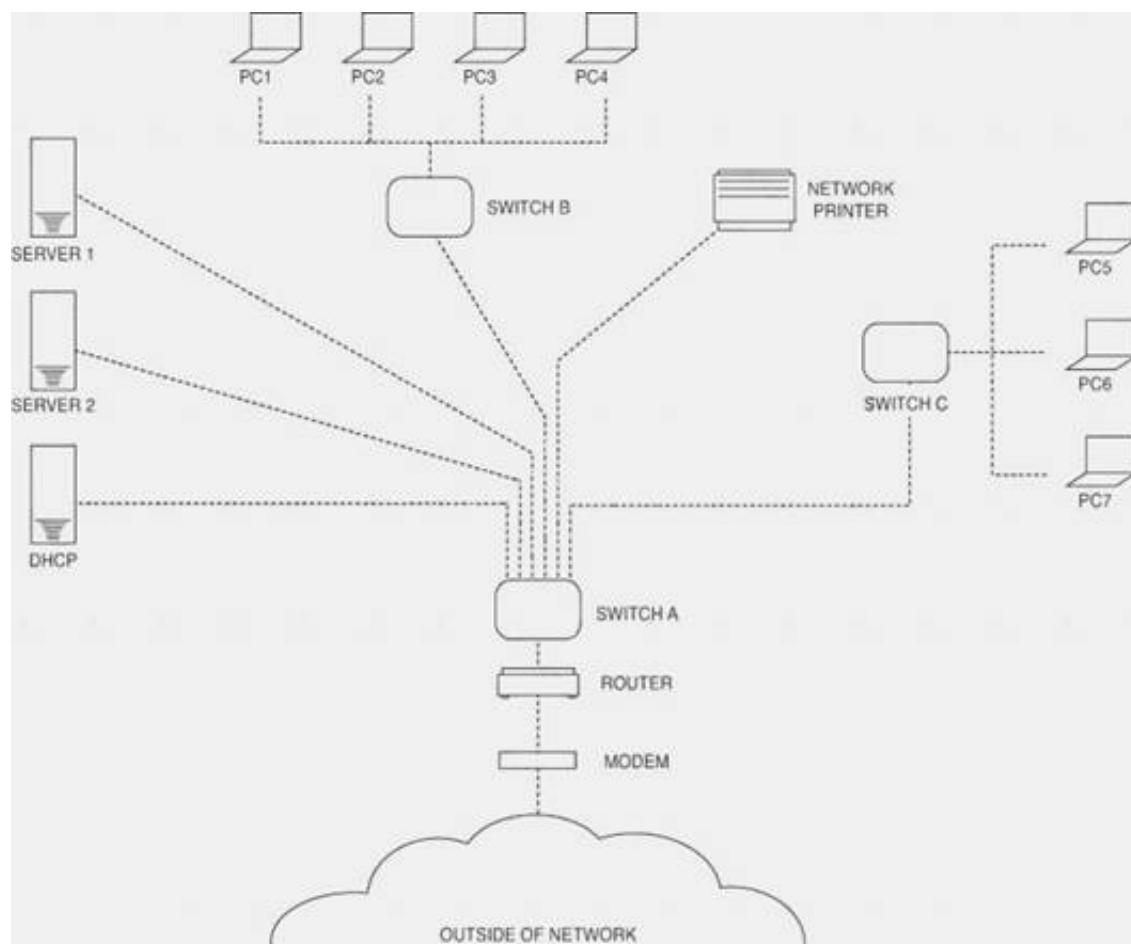
- A. CARP
- B. L2TP
- C. PPTP
- D. ISAKMP

Answer: A

NEW QUESTION 340

- (Exam Topic 2)

Please refer to the attached exhibit. Which of the following types of configuration management documentation is represented?



- A. Network security policy
- B. Network baseline
- C. Logical network diagram
- D. Wiring schematic

Answer: C

NEW QUESTION 342

- (Exam Topic 2)

Which of the following standards can operate at both the 2.4GHz and 5GHz frequencies?

- A. 802.11a
- B. 802.11b
- C. 802.11g
- D. 802.11n

Answer: D

NEW QUESTION 343

- (Exam Topic 2)

Which of the following subnet masks would allow for 192.168.0.3 and 192.168.0.240 to be in the same subnet?

- A. 255.255.255.0
- B. 255 255.255.128
- C. 255.255.255.192
- D. 255.255.255.248

Answer: A

NEW QUESTION 344

- (Exam Topic 2)

Which of the following network devices restricts traffic based on words, signatures, and URLs?

- A. Layer 2 switch
- B. Content filter
- C. Load balancer
- D. Traffic analyzer

Answer: B

NEW QUESTION 349

- (Exam Topic 2)

Which of the following allows a technician to gather information about the operating system?

- A. Domain services
- B. Fingerprinting
- C. Countermeasures
- D. Reconnaissance

Answer: B

NEW QUESTION 354

- (Exam Topic 2)

Which of the following devices exist as either hardware or software to assist in routing traffic? (Select TWO).

- A. Cable modem
- B. Layer 2 switch
- C. Router
- D. NIDS
- E. Layer 3 switch

Answer: CE

NEW QUESTION 356

- (Exam Topic 2)

Which of the following protocols would be used to send email to an email server?

- A. NTP
- B. FTP
- C. SNMP
- D. SMTP

Answer: D

NEW QUESTION 358

- (Exam Topic 2)

A new firewall was recently installed blocking SMTP traffic. As a result, no one has Internet access. Which of the following has MOST likely occurred?

- A. Port security is blocking all traffic.
- B. An IDS is blocking all traffic.
- C. Implicit deny is blocking all traffic.
- D. SMTP is blocking all traffic.

Answer: C

NEW QUESTION 362

- (Exam Topic 2)

Which of the following network topologies allows only communication to take place from one node at a time by passing a token around the network?

- A. Star
- B. Mesh
- C. Bus
- D. Ring

Answer: D

NEW QUESTION 367

- (Exam Topic 2)

A firewall that operates at Layer 7 of the OSI model is known as a(n):

- A. Circuit gateway
- B. Packet filter
- C. Application level
- D. Redundant firewall

Answer: C

NEW QUESTION 370

- (Exam Topic 2)

A technician recently fixed a computer with several viruses and spyware programs on it and notices the Internet settings were set to redirect all traffic through an unknown proxy. This type of attack is known as which of the following?

- A. Phishing
- B. Social engineering
- C. Man-in-the-middle
- D. Shoulder surfing

Answer: C

NEW QUESTION 375

- (Exam Topic 2)

Which of the following is true about an IP address if the first bit is a one and the second bit is a zero?

- A. The address is a Class A address.
- B. The address is a Class B address.
- C. The address is a Class C address.
- D. The address is a Class D address.

Answer: B

NEW QUESTION 378

- (Exam Topic 2)

Something you have, something you are, and something you know are the three tenets of:

- A. Social engineering
- B. Change management
- C. Remote access
- D. Access control

Answer: D

NEW QUESTION 379

- (Exam Topic 3)

A technician is setting up a firewall on the network that would show a public IP address out to the Internet and assign private IP addresses to users inside the network. Which of the following processes should be set up?

- A. Port security
- B. MAC filtering
- C. ACL
- D. NAT

Answer: D

NEW QUESTION 383

- (Exam Topic 3)

Jeff, a business owner, has discovered that several of the nearby businesses have wireless networks. Jeff wants to implement a unique wireless network inside the business. Which of the following should be configured on the wireless access point to reduce interference from the other wireless networks?

- A. PPPoE authentication
- B. MAC filtering
- C. WPA encryption
- D. Wireless channel

Answer: D

NEW QUESTION 386

- (Exam Topic 3)

Which of the following methods for network performance optimization is used to distribute traffic among similar devices?

- A. Fault tolerance
- B. QoS
- C. Proxy server
- D. Load balancing

Answer: D

NEW QUESTION 390

- (Exam Topic 3)

An administrator hosts all of the company's virtual servers internally. In the event of total server failure, the server images can be restored on a cloud provider and accessed through the VPN.

Which of the following cloud services is the administrator using?

- A. Community PaaS
- B. Public IaaS
- C. Hybrid SaaS
- D. Private IaaS

Answer: B

NEW QUESTION 394

- (Exam Topic 3)

An organization wants to perform maintenance on any of its web servers without affecting the service availability during a scheduled change window. Which of the following network devices would be required to provide this functionality?

- A. Router
- B. Forward proxy
- C. Load balancer
- D. Firewall

Answer: C

NEW QUESTION 398

- (Exam Topic 3)

Which of the following is the correct representation of an IPv6 address?

- A. ::
- B. 0:0:0:0:0:0:0:1
- C. 1:2:3:4:AB:CD:EF
- D. 2001::4860:800f::

Answer: A

NEW QUESTION 403

- (Exam Topic 3)

Which of the following cloud infrastructure designs includes on premise servers utilizing a centralized syslog server that is hosted at a third party organization for review?

- A. Hybrid
- B. Public
- C. Community
- D. Private

Answer: A

NEW QUESTION 407

- (Exam Topic 3)

Zach, a technician, needs to terminate a CAT5e Ethernet cable to a 110 block. Which of the following tools should he use?

- A. Toner probe
- B. Punch down
- C. Wire tester
- D. Crimper

Answer: B

NEW QUESTION 411

- (Exam Topic 3)

Zach, a network administrator, needs to purchase a new switch to support VoIP phones and wireless access points in a new building. Which of the following features are the MOST important for the new switch to support?

- A. PoE and QoS
- B. LACP and OSPF
- C. 802.1x and 802.11n
- D. NAT and VTP

Answer: A

NEW QUESTION 412

- (Exam Topic 3)

Which of the following security threats relies primarily on user deception and misinformation?

- A. Rogue access points
- B. DoS attacks
- C. Man-in-the-middle attacks
- D. Phishing

Answer: D

NEW QUESTION 416

- (Exam Topic 3)

A Windows server has a problem after booting up. Kim, a technician, should immediately check the:

- A. history logs.
- B. cron logs.
- C. application logs.
- D. system logs.

Answer: D

NEW QUESTION 420

- (Exam Topic 3)

A technician notices that network access is becoming increasingly slow. All of the activity lights, on the only network layer 2 switch, are blinking at steadily increasing rates. Which of the following is the MOST likely cause of the increased traffic?

- A. STP blocking
- B. IP addresses
- C. MTU mismatch
- D. Switching loop

Answer: D

NEW QUESTION 425

- (Exam Topic 3)

169.254.1.100 is an IP address which would MOST likely come from which of the following?

- A. CIDR
- B. DHCP
- C. APIPA
- D. DNS

Answer: C

NEW QUESTION 428

- (Exam Topic 3)

A company has attempted to introduce a new major network segment to allow growth in capacity. On the core switch, a GBIC was used to interconnect with a newly placed downstream distribution switch for the first time. Soon after this implementation, a network flood and an outage occurred between the core and new distribution network modules. Which of the following should the network administrator troubleshoot FIRST in order to rectify the issue?

- A. Check for switching loops between core and distribution switches.
- B. Check whether an incorrect VLAN has been assigned to the new distribution switch.
- C. Check for inconsistent or missing routes between the core and distribution switches.
- D. Check whether the GBIC was set to multi-mode instead of single-mode SFP.

Answer: A

NEW QUESTION 433

- (Exam Topic 3)

A SOHO office recently installed a wireless network for employees to use during lunch breaks. As such, the access point was placed in the kitchen area by the microwave. Employees have been reporting intermittent connectivity when using the wireless network. Which of the following would BEST improve connectivity?

- A. Disable SSID broadcast
- B. Increase the signal strength
- C. Move the access point
- D. Change the broadcast channel

Answer: C

NEW QUESTION 435

- (Exam Topic 3)

Zach, a technician, wants to test a laptop's NIC for functionality but has no other networking equipment to attach it to. Which of the following would allow him to test basic functionality of the NIC?

- A. Loopback plug
- B. Protocol analyzer
- C. Smart jack
- D. Coupler

Answer: A

NEW QUESTION 436

- (Exam Topic 3)

Kim, the client, has requested a cost-effective network solution to accommodate the ability to reconfigure the office space as needed. Which networking solution would provide the BEST solution?

- A. Private IP Addressing
- B. Wireless Access Points
- C. Wide Area Networking
- D. Virtual Local Area Networks

Answer: B

NEW QUESTION 437

- (Exam Topic 3)

A technician replaces a customer's router, and is now unable to ping the ISP's gateway. Which of the following should the technician check?

- A. The arp table of the new customer's router.
- B. The route table of the next-hop router.
- C. The route table of the new customer's router.
- D. The arp table of a network user.

Answer: C

NEW QUESTION 441

- (Exam Topic 3)

A network technician performs several switch commands to enable various advanced features on the switch in the accounting department. During the configuration changes, several users from this department report connectivity issues. Which of the following logs would the network technician need to analyze to troubleshoot the connectivity issues?

- A. Router logs
- B. History logs
- C. Startup/bootup config logs
- D. Event Viewer logs

Answer: B

NEW QUESTION 446

- (Exam Topic 3)

company wants the public to be able to connect to the wireless network with minimal security, but not be able to connect to the private internal network. Which of the following firewall rules would BEST accomplish this?

- A. Content filtering on the wireless access point
- B. Allow traffic from the wireless access point
- C. Block traffic from the wireless access point
- D. Packet filtering on the wireless access point

Answer: C

NEW QUESTION 451

- (Exam Topic 3)

Which of the follow creates a secure remote connection at the OSI network layer?

- A. L2TP
- B. SSL
- C. DTLS
- D. IPSec

Answer: D

NEW QUESTION 452

- (Exam Topic 3)

Kim, a technician, is installing a switch that does not feature auto-negotiation. Which of the following characteristics would need to be manually configured? (Select TWO).

- A. MAC addressing
- B. IP addressing
- C. Port speed
- D. IPv6 addressing
- E. Duplex

Answer: CE

NEW QUESTION 454

- (Exam Topic 3)

Lisa, a consultant, is inspecting an office that reports frequent wireless issues. Upon scanning the network broadcasting in the vicinity of the office, seven SSIDs are found. The company's Wi-Fi network and three others all share channel six. Which of the following is MOST likely causing the issue?

- A. Frequency interference
- B. Low signal strength
- C. Standard mismatch
- D. Incorrect channel

Answer: A

NEW QUESTION 457

- (Exam Topic 3)

Kim, a network administrator, should consult which documentation sources FIRST to determine the cause of recent network issues?

- A. Network map
- B. Cable management
- C. Change management
- D. Asset management

Answer: C

NEW QUESTION 462

- (Exam Topic 3)

A supervisor requests that a technician downloads a MIB for a particular server. Which of the following protocols requires MIBs?

- A. IPSec
- B. SSL
- C. ISAKMP
- D. SNMP

Answer: D

NEW QUESTION 466

- (Exam Topic 3)

Two WAPs are positioned with overlapping coverage, but seamless roaming across them is not working. Which of the following should be checked?

- A. WPA should be enabled
- B. PKI should be turned off
- C. WAP SSIDs are matching
- D. WAPs are transmitting on same channel

Answer: C

NEW QUESTION 469

- (Exam Topic 3)

Which of the following technologies could be implemented to improve call clarity when using VoIP technology?

- A. Static IP addressing
- B. Caching engines
- C. QoS
- D. Port forwarding

Answer: C

NEW QUESTION 473

- (Exam Topic 3)

Jeff, a customer, has a wireless network and has reported that the network traffic from the wireless access points seems high compared to the limited number of wireless devices used. Jeff believes that other non-employees are using the wireless network to access the Internet. Which of the following could be used to limit the access to the wireless network? (Select TWO).

- A. WPA encryption
- B. Changing wireless channels
- C. MAC filtering
- D. Changing wireless speed standards
- E. SSID disable

Answer: AC

NEW QUESTION 478

- (Exam Topic 3)

A company decides to deploy customer-facing, touch-scan kiosks. The kiosks appear to have several open service ports that could potentially become compromised. Which of the following is the MOST effective way to protect the kiosks?

- A. Install an IDS to monitor all traffic to and from the kiosks.
- B. Install honeypots on the network to detect and analyze potential kiosk attacks before they occur.
- C. Enable switchport security on the ports to which the kiosks are connected to prevent network –level attacks.
- D. Create a new network segment with ACLs, limiting kiosks' traffic with the internal network.

Answer: D

NEW QUESTION 480

- (Exam Topic 3)

Lisa, a technician, is tasked to monitor various analog POTS lines for voice activity. Which of the following hardware tools would be used?

- A. Butt set
- B. Toner probe
- C. Wire mapper
- D. Cable certifier

Answer: A

NEW QUESTION 483

- (Exam Topic 3)

A network administrator has created a virtual machine in the cloud. The technician would like to connect to the server remotely using RDP. Which of the following default ports needs to be opened?

- A. 445
- B. 3389
- C. 5004
- D. 5060

Answer: B

NEW QUESTION 484

- (Exam Topic 3)

Which of the following is used to create a secure connection between a client and a host?

- A. VLAN

- B. Proxy server
- C. IIS server
- D. VPN

Answer: D

NEW QUESTION 489

- (Exam Topic 3)

At which of the following layers of the OSI model do packets exist?

- A. Network
- B. Session
- C. Data link
- D. Transport

Answer: A

NEW QUESTION 491

- (Exam Topic 3)

An administrator is troubleshooting analog telephony issues on the punch down block. Which of the following tools would be MOST useful in this scenario?

- A. T1 loopback
- B. Butt set
- C. Multimeter
- D. Protocol analyzer

Answer: B

NEW QUESTION 492

- (Exam Topic 3)

A junior technician is settings up a voice control device so the Chief Executive Officer (CEO) will able to control various things in the office. Of which of the following types of the IoT technologies is this an example?

- A. LAN
- B. WAN
- C. SAN
- D. PAN

Answer: B

NEW QUESTION 493

- (Exam Topic 3)

Which of the following utilities would a technician use to determine the location of lost packets on a routed network?

- A. ping
- B. nslookup
- C. route
- D. tracert

Answer: D

NEW QUESTION 498

- (Exam Topic 3)

Kim, a user, cannot access the network using wireless. Which of the following is MOST likely the cause?

- A. TXRX is reversed
- B. Faulty crossover cable
- C. Incorrect WEP key
- D. A short in the cable pairs

Answer: C

NEW QUESTION 502

- (Exam Topic 3)

Keeping an authoritative and timely record of network devices and their settings is a key activity of which of the following?

- A. Project management
- B. Quality of service
- C. Configuration management
- D. Bandwidth shaping

Answer: C

NEW QUESTION 507

- (Exam Topic 3)

A network administrator suspects an employee of using the company's Internet connection to download illegal content. Which of the following can be used to inspect ongoing network traffic?

- A. Syslog server
- B. Toner probe
- C. OTDR
- D. Packet sniffer

Answer: D

NEW QUESTION 509

- (Exam Topic 3)

A network technician at a small office upgrades the VLAN switch. After the upgrade, a user reports being unable to access network resources. When the technician checks the switchport, the LED light is not lit. Which of the following should technician check FIRST?

- A. The device is using the correct cable type.
- B. The switchport is functioning properly.
- C. The device is connected to the switch.
- D. The switch is connected to the router.

Answer: C

NEW QUESTION 513

- (Exam Topic 3)

A technician is surveying college's network equipment room and connectivity. Which of the following types of documentation does the technician need perform a detailed site survey? (Select THREE).

- A. IDF/MDF documentation
- B. Cable run label documentation
- C. network configuration documentation
- D. Performance baseline documentation
- E. Standard operating procedure documentation
- F. Change management documentation
- G. Rack diagram documentation

Answer: ACG

NEW QUESTION 517

.....

THANKS FOR TRYING THE DEMO OF OUR PRODUCT

Visit Our Site to Purchase the Full Set of Actual N10-007 Exam Questions With Answers.

We Also Provide Practice Exam Software That Simulates Real Exam Environment And Has Many Self-Assessment Features. Order the N10-007 Product From:

<https://www.2passeasy.com/dumps/N10-007/>

Money Back Guarantee

N10-007 Practice Exam Features:

- * N10-007 Questions and Answers Updated Frequently
- * N10-007 Practice Questions Verified by Expert Senior Certified Staff
- * N10-007 Most Realistic Questions that Guarantee you a Pass on Your FirstTry
- * N10-007 Practice Test Questions in Multiple Choice Formats and Updatesfor 1 Year