

# Cisco

## Exam Questions 200-301

Cisco Certified Network Associate



#### NEW QUESTION 1

Which design element is a best practice when deploying an 802.11b wireless infrastructure?

- A. disabling TPC so that access points can negotiate signal levels with their attached wireless devices.
- B. setting the maximum data rate to 54 Mbps on the Cisco Wireless LAN Controller
- C. allocating nonoverlapping channels to access points that are in close physical proximity to one another
- D. configuring access points to provide clients with a maximum of 5 Mbps

**Answer: C**

#### NEW QUESTION 2

When configuring IPv6 on an interface, which two IPv6 multicast groups are joined? (Choose two)

- A. 2000::/3
- B. 2002::5
- C. FC00::/7
- D. FF02::1
- E. FF02::2

**Answer: DE**

#### NEW QUESTION 3

Which option about JSON is true?

- A. uses predefined tags or angle brackets () to delimit markup text
- B. used to describe structured data that includes arrays
- C. used for storing information
- D. similar to HTML, it is more verbose than XML

**Answer: B**

#### NEW QUESTION 4

Which command prevents passwords from being stored in the configuration as plain text on a router or switch?

- A. enable secret
- B. service password-encryption
- C. username Cisco password encrypt
- D. enable password

**Answer: B**

#### NEW QUESTION 5

What are two southbound APIs? (Choose two )

- A. OpenFlow
- B. NETCONF
- C. Thrift
- D. CORBA
- E. DSC

**Answer: CD**

#### NEW QUESTION 6

Which set of action satisfy the requirement for multifactor authentication?

- A. The user swipes a key fob, then clicks through an email link
- B. The user enters a user name and password, and then clicks a notification in an authentication app on a mobile device
- C. The user enters a PIN into an RSA token, and then enters the displayed RSA key on a login screen
- D. The user enters a user name and password and then re-enters the credentials on a second screen

**Answer: A**

#### NEW QUESTION 7

Which type of wireless encryption is used for WPA2 in preshared key mode?

- A. TKIP with RC4
- B. RC4
- C. AES-128
- D. AES-256

**Answer: D**

#### NEW QUESTION 8

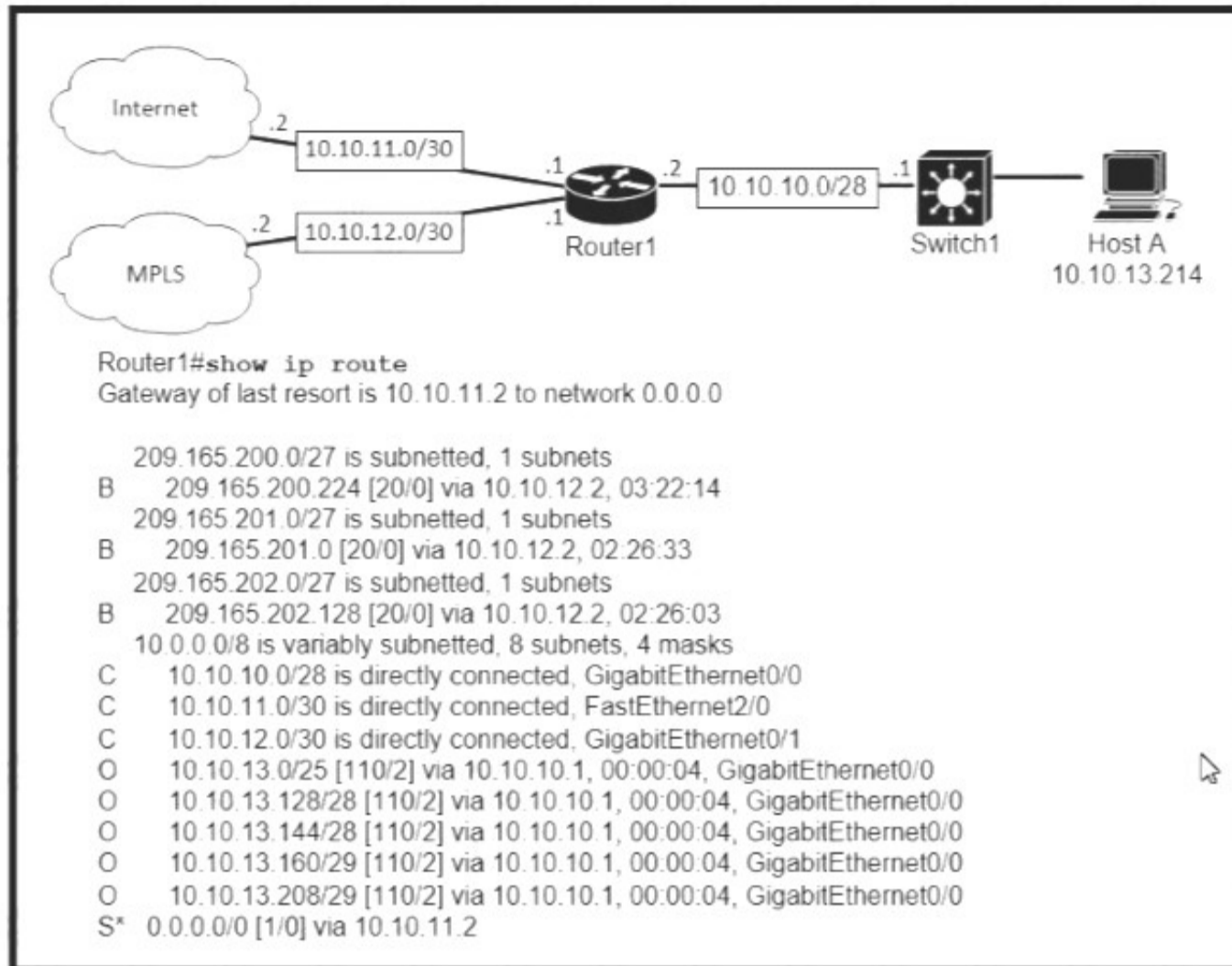
Which type of address is the public IP address of a NAT device?

- A. outside global
- B. outside local
- C. inside global
- D. inside local
- E. outside public
- F. inside public

**Answer: C**

#### NEW QUESTION 9

Refer to the exhibit.



Which prefix does Router 1 use for traffic to Host A?

- A. 10.10.10.0/28
- B. 10.10.13.0/25
- C. 10.10.13.144/28
- D. 10.10.13.208/29

**Answer: C**

#### NEW QUESTION 10

A network engineer must back up 20 network router configurations globally within a customer environment. Which protocol allows the engineer to perform this function using the Cisco IOS MIB?

- A. CDP
- B. SNMP
- C. SMTP
- D. ARP

**Answer: C**

#### NEW QUESTION 10

A frame that enters a switch fails the Frame Check Sequence. Which two interface counters are incremented? (Choose two)

- A. runts
- B. giants
- C. frame
- D. CRC
- E. input errors

**Answer: DE**

#### NEW QUESTION 13

Which configuration is needed to generate an RSA key for SSH on a router?

- A. Configure the version of SSH

- B. Configure VTY access.
- C. Create a user with a password.
- D. Assign a DNS domain name

**Answer:** B

#### NEW QUESTION 17

What is the primary different between AAA authentication and authorization?

- A. Authentication verifies a username and password, and authorization handles the communication between the authentication agent and the user database.
- B. Authentication identifies a user who is attempting to access a system, and authorization validates the users password
- C. Authentication identifies and verifies a user who is attempting to access a system, and authorization controls the tasks the user can perform.
- D. Authentication controls the system processes a user can access and authorization logs the activities the user initiates

**Answer:** C

#### NEW QUESTION 18

An engineer must configure a /30 subnet between two routers. Which usable IP address and subnet mask combination meets this criteria?

```
interface e0/0
description to HQ-A371:10975
ip address 172.16.1.4 255.255.255.248
```

```
interface e0/0
description to HQ-A371:10975
ip address 10.2.1.3 255.255.255.252
```

```
interface e0/0
description to HQ-A371:10975
ip address 192.168.1.1 255.255.255.248
```

```
interface e0/0
description to HQ-A371:10975
ip address 209.165.201.2 255.255.255.252
```

- A. Option A
- B. Option B
- C. Option C
- D. Option D

**Answer:** C

#### NEW QUESTION 19

What is a benefit of using a Cisco Wireless LAN Controller?

- A. Central AP management requires more complex configurations
- B. Unique SSIDs cannot use the same authentication method
- C. It supports autonomous and lightweight APs
- D. It eliminates the need to configure each access point individually

**Answer:** D

#### NEW QUESTION 22

Which attribute does a router use to select the best path when two or more different routes to the same destination exist from two different routing protocols.

- A. dual algorithm
- B. metric
- C. administrative distance
- D. hop count

**Answer:** D

#### NEW QUESTION 26

Refer to Exhibit.

```
SW2
vtp domain cisco
vtp mode transparent
vtp password ciscotest
interface fastethernet0/1
description connection to sw1
switchport mode trunk
switchport trunk encapsulation dot1q
```

How does SW2 interact with other switches in this VTP domain?

- A. It processes VTP updates from any VTP clients on the network on its access ports.
- B. It receives updates from all VTP servers and forwards all locally configured VLANs out all trunk ports
- C. It forwards only the VTP advertisements that it receives on its trunk ports.
- D. It transmits and processes VTP updates from any VTP Clients on the network on its trunk ports

Answer: C

NEW QUESTION 31

Which unified access point mode continues to serve wireless clients after losing connectivity to the Cisco Wireless LAN Controller?

- A. sniffer
- B. mesh
- C. flexconnect
- D. local

Answer: B

NEW QUESTION 32

Drag and drop the Cisco Wireless LAN Controller security settings from the left onto the correct security mechanism categories on the right.

web policy

Passthrough

WPA+WPA2

802.1X

Layer 2 Security Mechanisms

Layer 3 Security Mechanisms (for WLAN)

- A. Mastered
- B. Not Mastered

Answer: A

Explanation:

web policy

Passthrough

WPA+WPA2

802.1X

Layer 2 Security Mechanisms

Passthrough

802.1X

Layer 3 Security Mechanisms (for WLAN)

WPA+WPA2

web policy

NEW QUESTION 33

What are two reasons that cause late collisions to increment on an Ethernet interface? (Choose two)

- A. when the sending device waits 15 seconds before sending the frame again
- B. when the cable length limits are exceeded
- C. when one side of the connection is configured for half-duplex
- D. when Carner Sense Multiple Access/Collision Detection is used
- E. when a collision occurs after the 32nd byte of a frame has been transmitted

Answer: CE

NEW QUESTION 34

Refer to the exhibit.

```
R2#show ip nat translations
Pro Inside global      Inside local  Outside local  Outside global
tcp 172.23.104.3:43268 10.4.4.4:43268 172.23.103.10:23 172.23.103.10:23
tcp 172.23.104.4:45507 10.4.4.5:45507 172.23.103.10:80 172.23.103.10:80
```

An engineer configured NAT translations and has verified that the configuration is correct. Which IP address is the source IP?

- A. 10.4.4.4
- B. 10.4.4.5
- C. 172.23.103.10
- D. 172.23.104.4

Answer: C

#### NEW QUESTION 36

Refer to the exhibit.

```
R1# show ip route
D    192.168.16.0/26 [90/2679326] via 192.168.1.1
R    192.168.16.0/24 [120/3] via 192.168.1.2
O    192.168.16.0/21 [110/2] via 192.168.1.3
i L1 192.168.16.0/27 [115/30] via 192.168.1.4
```

Which route does R1 select for traffic that is destined to 192.168.16.2?

- A. A.-192.168.16.0/21
- B. 192.168.16.0/24
- C. 192.168.16.0/26
- D. 192.168.16.0/27

Answer: B

#### NEW QUESTION 41

Refer to the exhibit.

```
[root@HostTest ~]# ip route
default via 192.168.1.193 dev eth1 proto static
192.168.1.0/26 dev eth1 proto kernel scope link src 192.168.1.200 metric 1

[root@HostTest ~]# ip addr show eth1
eth1: mtu 1500 qdisc pfifo_fast qlen 1000
    link/ether 00:0c:22:83:79:a3 brd ff:ff:ff:ff:ff:ff
    inet 192.168.1.200/26 brd 192.168.1.255 scope global eth1
    inet6 fe80::20c:29ff:fe89:79b3/64 scope link
    valid_lft forever preferred_lft forever
```

Drag and drop the networking parameters from the left onto the correct values on the right. Check the answer below.

NIC MAC address

default gateway

subnet mask

host IP address

NIC vendor OUI

- A. Mastered
- B. Not Mastered

Answer: A

Explanation:

NIC MAC address

default gateway

subnet mask

host IP address

NIC vendor OUI

**NEW QUESTION 42**  
Drag and drop the AAA functions from the left onto the correct AAA services on the right

records user activities

restricts the services that are available to a user

identifies the user

controls the actions that a user can perform

provides analytical information for the network administrator

verifies the password associated with a user

Authentication

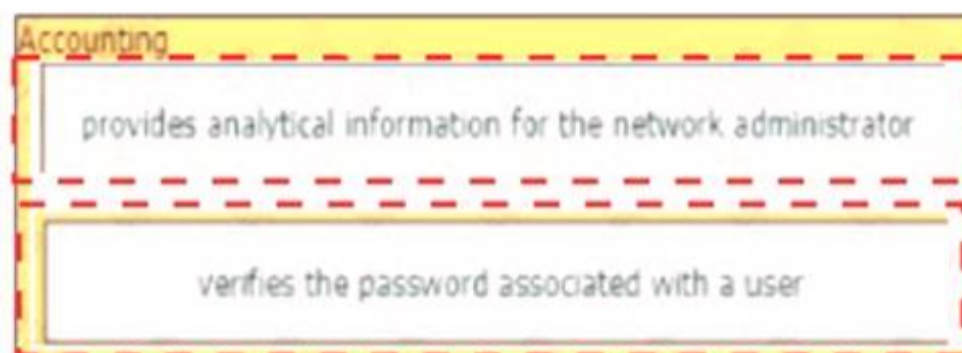
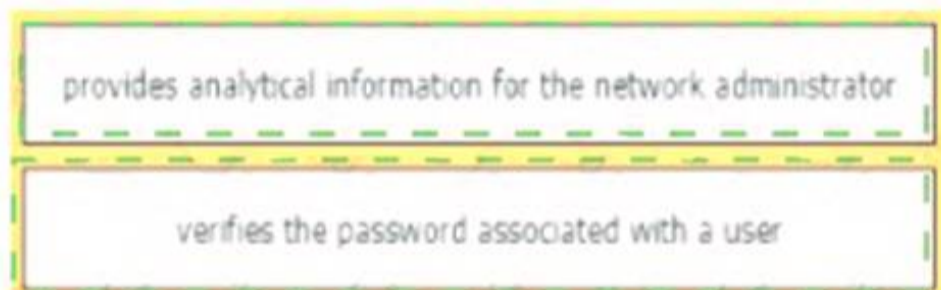
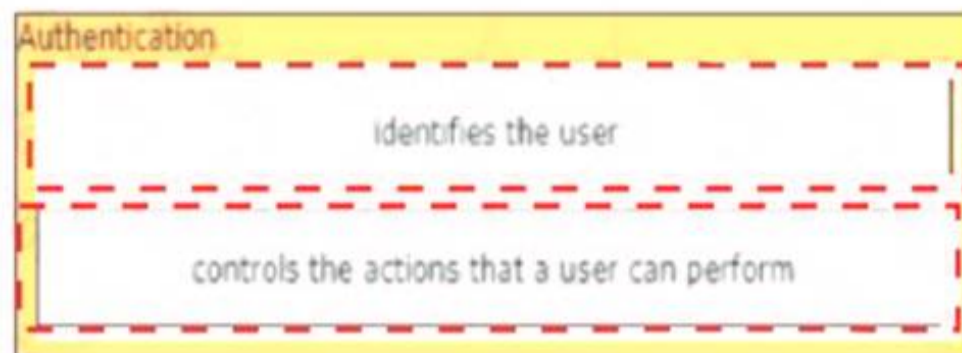
Authorization

Accounting

- A. Mastered
- B. Not Mastered

Answer: A

Explanation:



#### NEW QUESTION 46

Which two values or settings must be entered when configuring a new WLAN in the Cisco Wireless LAN Controller GUI? (Choose two)

- A. management interface settings
- B. QoS settings
- C. Ip address of one or more access points
- D. SSID
- E. Profile name

**Answer:** DE

#### NEW QUESTION 49

Which command is used to specify the delay time in seconds for LLDP to initialize on any interface?

- A. lldp timer
- B. lldp holdtimt
- C. lldp reinit
- D. lldp tlv-select

**Answer:** D

#### NEW QUESTION 54

Refer to the exhibit.

```
Designated Router (ID) 10.11.11.11, Interface address 10.10.10.1
Backup Designated router (ID) 10.3.3.3, Interface address 10.10.10.3
Timer intervals configured, Hello 10, Dead 40, Wait 40, Retransmit 5
oob-resync timeout 40
Hello due in 00:00:08
Supports Link-local Signaling (LLS)
Cisco NSF helper support enabled
IETF NSF helper support enabled
Index 1/1/1, flood queue length 0
Next 0x0(0)/0x0(0)/0x0(0)
Last flood scan length is 1, maximum is 6
Last flood scan time is 0 msec, maximum is 1 msec
Neighbor Count is 3, Adjacent neighbor count is 3
Adjacent with neighbor 10.1.1.4
Adjacent with neighbor 10.2.2.2
Adjacent with neighbor 10.3.3.3 (Backup Designated Router)
Suppress hello for 0 neighbor(s)
```

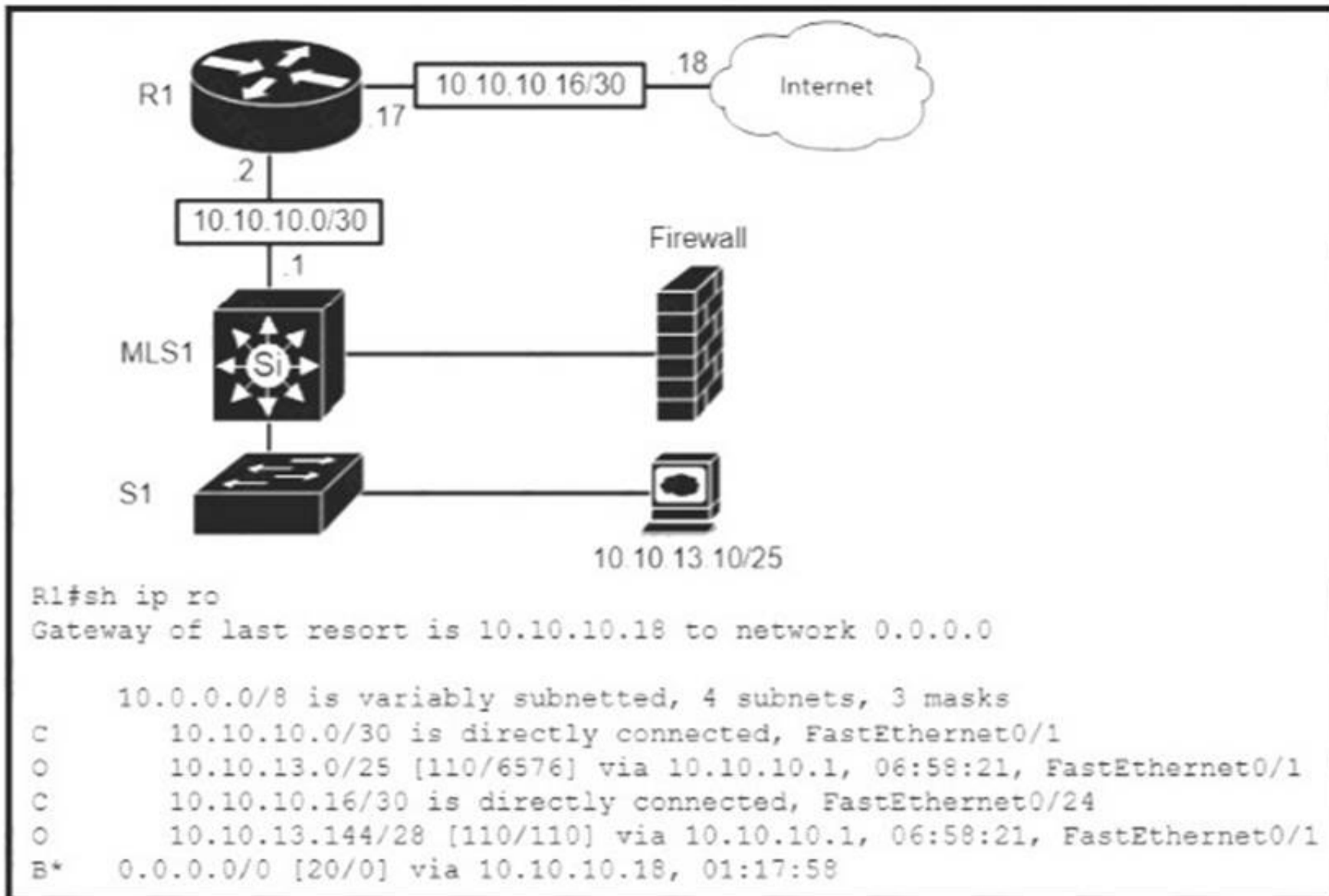
The show ip ospf interface command has been executed on R1. How is OSPF configured?

- A. The interface is not participating in OSPF
- B. A point-to-point network type is configured
- C. The default Hello and Dead timers are in use
- D. There are six OSPF neighbors on this interface

**Answer:** A

#### NEW QUESTION 59

Refer to the exhibit.



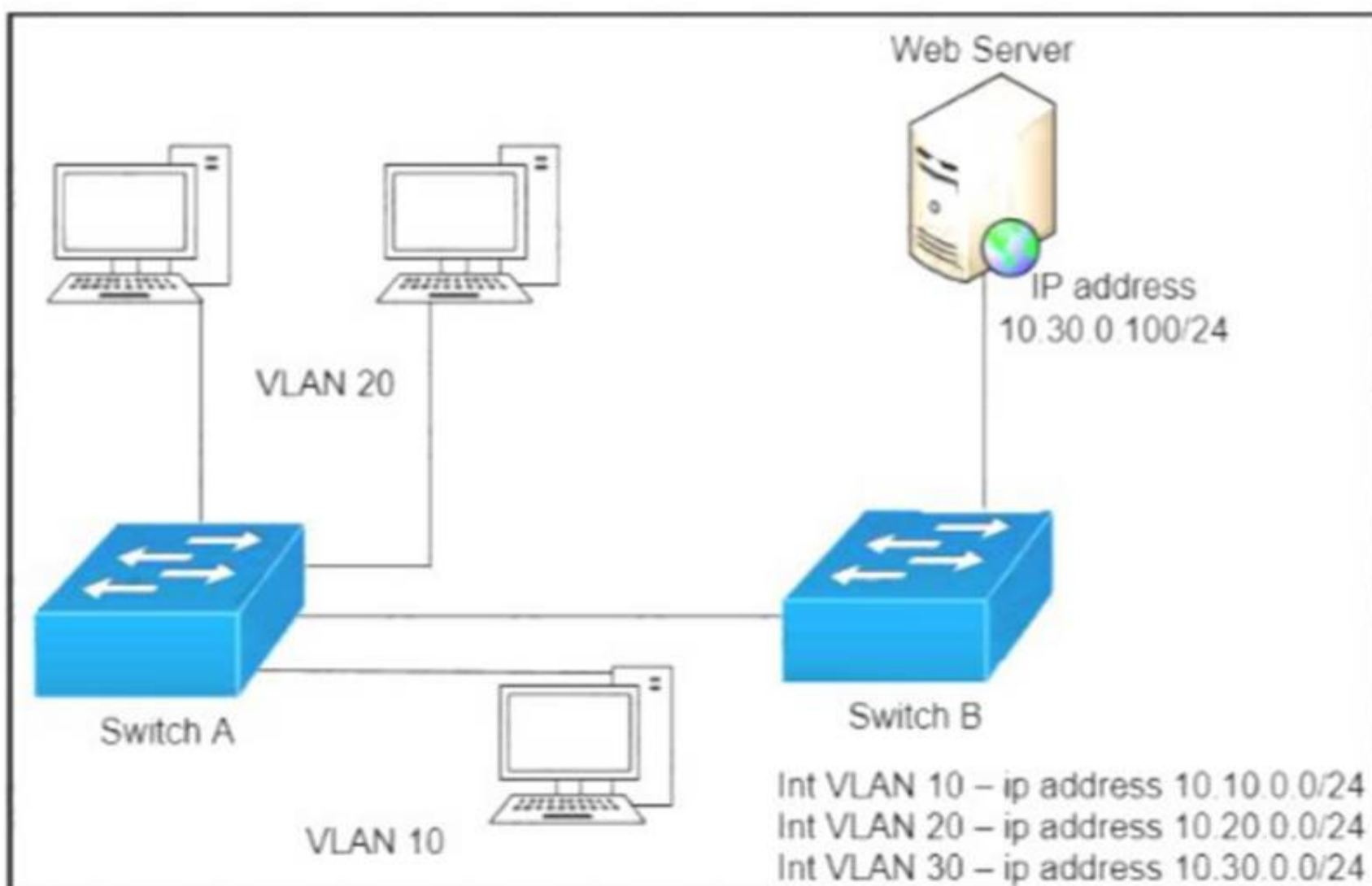
Which type of route does R1 use to reach host 10.10.13.10/32?

- A. floating static route
- B. host route
- C. default route
- D. network route

**Answer: D**

#### NEW QUESTION 64

Refer to the exhibit.



A network engineer must block access for all computers on VLAN 20 to the web server via HTTP. All other computers must be able to access the web server. Which configuration when applied to switch A accomplishes this task?

- ☐

```
config t
ip access-list extended wwwblock
deny tcp any host 10.30.0.100 eq 80
int vlan 10
ip access-group wwwblock in
```
- ☐

```
config t
ip access-list extended wwwblock
deny tcp any host 10.30.0.100 eq 80
permit ip any any
int vlan 20
ip access-group wwwblock in
```
- ☒

```
config t
ip access-list extended wwwblock
permit ip any any
deny tcp any host 10.30.0.100 eq 80
int vlan 30
ip access-group wwwblock in
```
- ☐

```
config t
ip access-list extended wwwblock
permit ip any any
deny tcp any host 10.30.0.100 eq 80
int vlan 20
ip access-group wwwblock in
```

- A. Option A  
B. Option B  
C. Option C  
D. Option D

**Answer:** B

#### NEW QUESTION 65

A user configured OSPF and advertised the Gigabit Ethernet interface in OSPF. By default, which type of OSPF network does this interface belong to?

- A. point-to-multipoint  
B. point-to-point  
C. broadcast  
D. nonbroadcast

**Answer:** B

#### NEW QUESTION 69

An organization has decided to start using cloud-provided services. Which cloud service allows the organization to install its own operating system on a virtual machine?

- A. platform-as-a-service  
B. software-as-a-service  
C. network-as-a-service  
D. infrastructure-as-a-service

**Answer:** D

#### NEW QUESTION 70

Drag and drop the IPv4 network subnets from the left onto the correct usable host ranges on the right

172.28.228.144/18	172.28.228.1 - 172.28.229.254
172.28.228.144/21	172.28.224.1 - 172.28.231.254
172.28.228.144/23	172.28.228.129 - 172.28.228.254
172.28.228.144/25	172.28.228.145 - 172.28.228.150
172.28.228.144/29	172.28.192.1 - 172.28.255.254

- A. Mastered  
 B. Not Mastered

**Answer:** A

**Explanation:**

172.28.228.144/18	172.28.228.144/21
172.28.228.144/21	172.28.228.144/29
172.28.228.144/23	172.28.228.144/23
172.28.228.144/25	172.28.228.144/25
172.28.228.144/29	172.28.228.144/18

**NEW QUESTION 74**

Refer to exhibit.

```
Router(config)#interface GigabitEthernet 1/0/1
Router(config-if)#ip address 192.168.16.143 255.255.255.240
Bad mask /28 for address 192.168.16.143
```

Which statement explains the configuration error message that is received?

- A. It is a broadcast IP address  
 B. The router does not support /28 mask.  
 C. It belongs to a private IP address range.  
 D. IT is a network IP address.

**Answer:** A

**NEW QUESTION 78**

What makes Cisco DNA Center different from traditional network management applications and their management of networks?

- A. It only supports auto-discovery of network elements in a greenfield deployment.  
 B. It modular design allows someone to implement different versions to meet the specific needs of an organization

- C. IT abstracts policy from the actual device configuration
- D. It does not support high availability of management functions when operating in cluster mode

Answer: A

NEW QUESTION 82

Drag and drop the descriptions of file-transfer protocols from the left onto the correct protocols on the right.

provides reliability when loading an IOS image upon boot up

does not require user authentication

uses port 69

uses ports 20 and 21

uses TCP

uses UDP

FTP

TFTP

- A. Mastered
- B. Not Mastered

Answer: A

Explanation:

provides reliability when loading an IOS image upon boot up

does not require user authentication

uses port 69

uses ports 20 and 21

uses TCP

uses UDP

FTP

provides reliability when loading an IOS image upon boot up

uses ports 20 and 21

uses TCP

TFTP

does not require user authentication

uses port 69

uses UDP

NEW QUESTION 86

Refer to the exhibit.

```
R1#show ip interface brief
Interface                               IP-Address      OK? Method Status        Protocol
FastEthernet0/0                         unassigned      YES NVRAM    administratively down down
GigabitEthernet1/0                      192.168.0.1     YES NVRAM    up            up
GigabitEthernet2/0                      10.10.1.10      YES manual   up            up
GigabitEthernet3/0                      10.10.10.20     YES manual   up            up
GigabitEthernet4/0                      unassigned      YES NVRAM    administratively down down
Loopback0                               172.16.15.10    YES manual
```

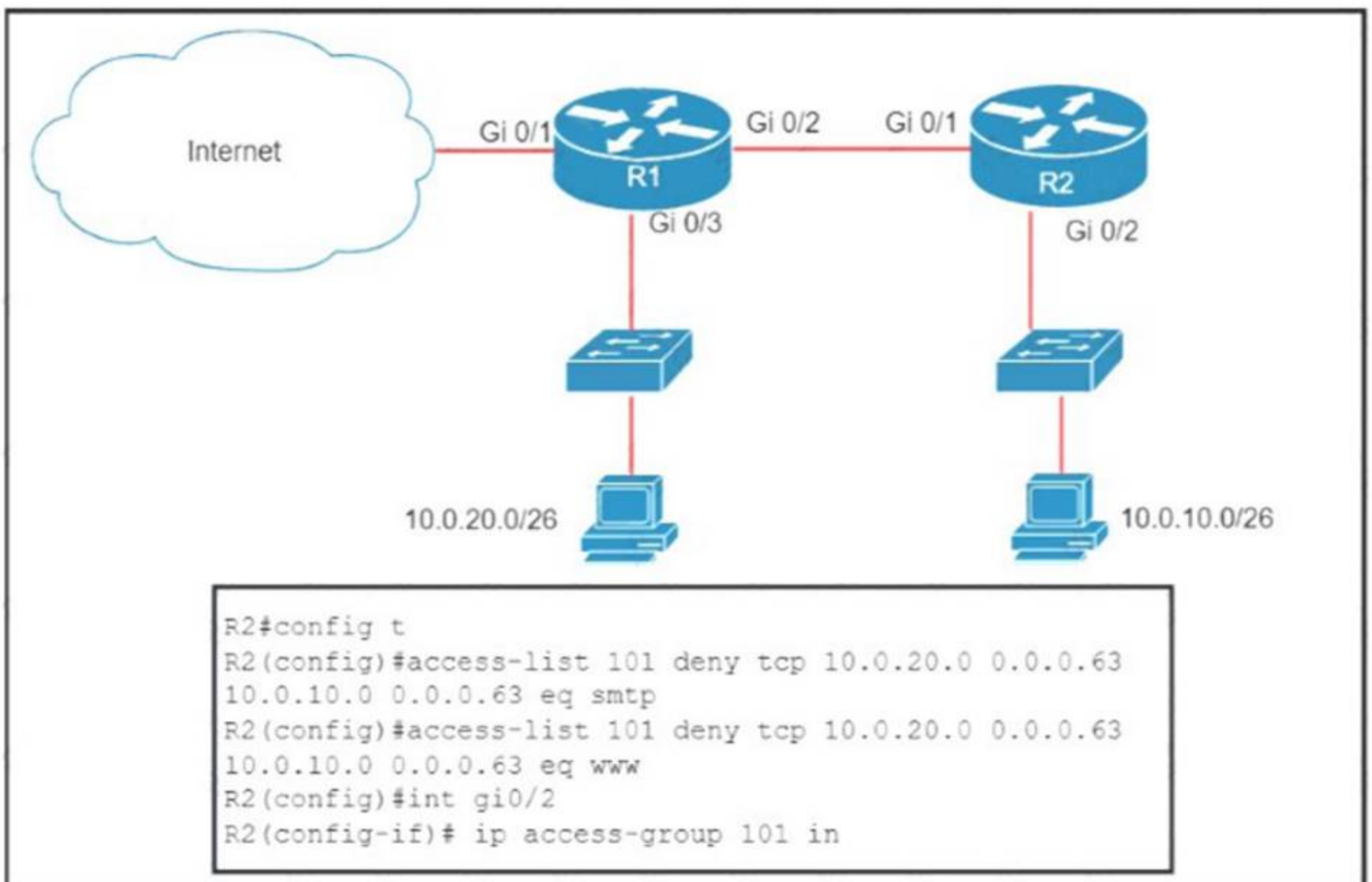
What does router R1 use as its OSPF router-ID?

- A. 10.10.1.10
- B. 10.10.10.20
- C. 172.16.15.10
- D. 192.168.0.1

**Answer: B**

#### NEW QUESTION 87

Refer to the exhibit.



An extended ACL has been configured and applied to router R2. The configuration failed to work as intended. Which two changes stop outbound traffic on TCP ports 25 and 80 to 10.0.20.0/26 from the 10.0.10.0/26 subnet while still allowing all other traffic? (Choose two)

- A. Add a "permit ip any any" statement to the beginning of ACL 101 for allowed traffic.
- B. Add a "permit ip any any" statement at the end of ACL 101 for allowed traffic.
- C. The source and destination IPs must be swapped in ACL 101.
- D. The ACL must be configured on the Gi0/2 interface inbound on R1.
- E. The ACL must be moved to the Gi0/1 interface outbound on R2.

**Answer: AE**

#### NEW QUESTION 90

A router running EIGRP has learned the same route from two different paths. Which parameter does the router use to select the best path?

- A. cost
- B. administrative distance
- C. metric
- D. as-path

Answer: C

NEW QUESTION 95

R1 has learned route 192.168.12.0/24 via IS-IS. OSPF, RIP. and Internal EIGRP Under normal operating conditions, which routing protocol is installed in the routing table?

- A. IS-IS
- B. RIP
- C. Internal EIGRP
- D. OSPF

Answer: C

NEW QUESTION 97

Refer to the exhibit.

```
R1# show ip route | begin gateway
Gateway of last resort is 209.165.200.246 to network 0.0.0.0
S* 0.0.0.0/0 [1/0] via 209.165.200.246, Serial0/1/0
   is directly connected, Serial0/1/0
   172.16.0.0/16 is variably subnetted, 3 subnets, 3 masks
S   172.16.0.0/24 [1/0] via 207.165.200.250, Serial0/0/0
O   172.16.0.128/25 [110/38443] via 207.165.200.254, 00:00:23, Serial0/0/1
D   172.16.0.192/29 [90/3184439] via 207.165.200.254, 00:00:25, Serial0/0/1
   209.165.200.0/24 is variably subnetted, 4 subnets, 2 masks
C   209.165.200.248/30 is directly connected, Serial0/0/0
L   209.165.200.249/32 is directly connected, Serial0/0/0
C   209.165.200.252/30 is directly connected, Serial0/0/1
L   209.165.200.253/32 is directly connected, Serial0/0/1
```

With which metric was the route to host 172.16.0.202 learned?

- A. 110
- B. 38443
- C. 3184439

Answer: C

NEW QUESTION 98

Drag and drop the WLAN components from the left onto the correct descriptions on the right.

access point	
virtual interface	
dynamic interface	
service port	
wireless LAN controller	

- A. Mastered
- B. Not Mastered

Answer: A

Explanation:

- 5:1
- 1:2
- 2:4
- 4:3
- 3:5

NEW QUESTION 101

Refer to the exhibit.

```
Gateway of last resort is 10.12.0.1 to network 0.0.0.0

O*E2  0.0.0.0/0 [110/1] via 10.12.0.1, 00:00:01, GigabitEthernet0/0
10.0.0.0/8 is variably subnetted, 2 subnets, 2 masks
C     10.0.0.0/24 is directly connected, GigabitEthernet0/0
L     10.0.0.2/32 is directly connected, GigabitEthernet0/0
C     10.13.0.0/24 is directly connected, GigabitEthernet0/1
L     10.13.0.2/32 is directly connected, GigabitEthernet0/1
```

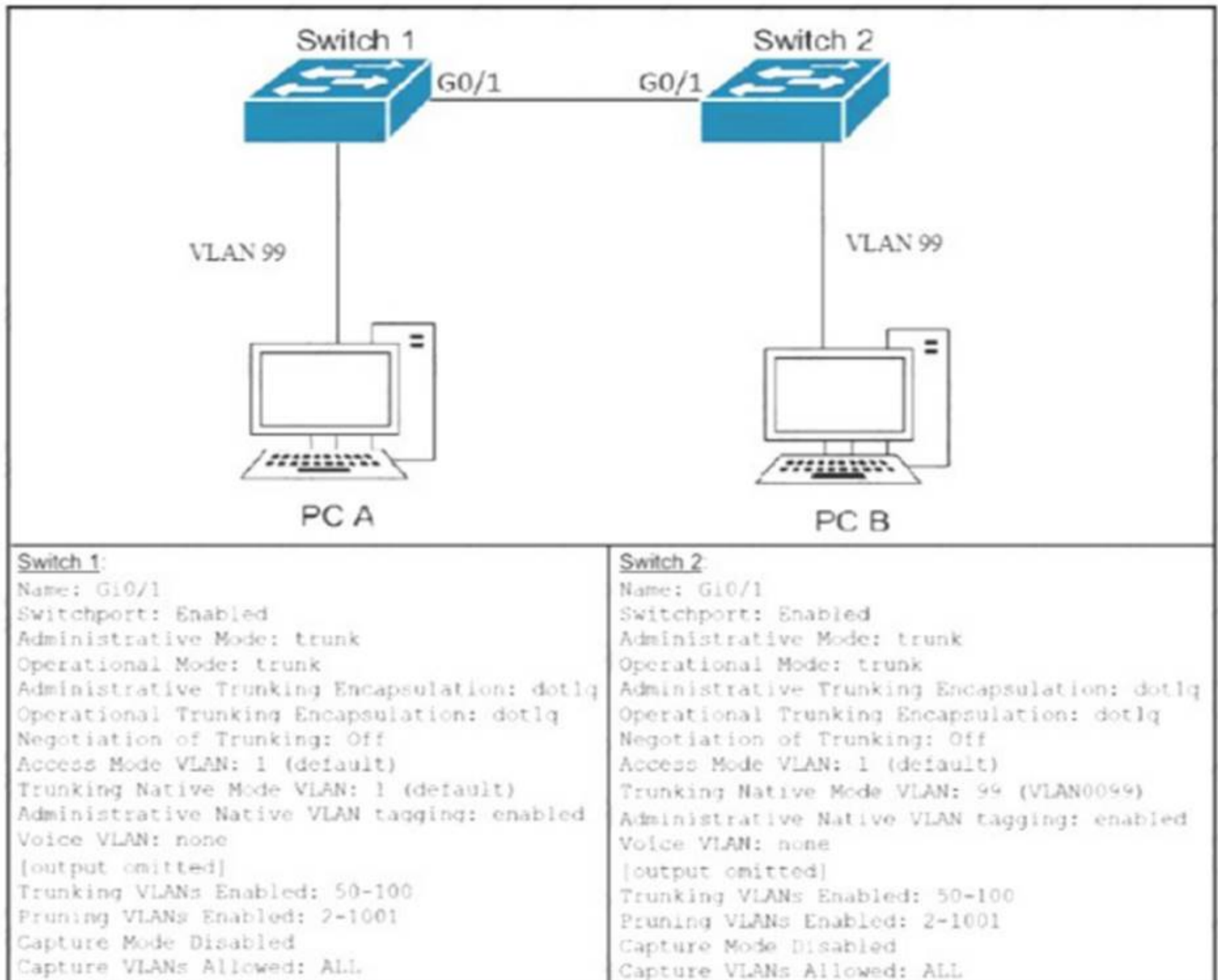
If configuring a static default route on the router with the ip route 0.0.0.0 0.0.0.0 10.13.0.1 120 command how does the router respond?

- A. It ignores the new static route until the existing OSPF default route is removed
- B. It immediately replaces the existing OSPF route in the routing table with the newly configured static route
- C. It starts load-balancing traffic between the two default routes
- D. It starts sending traffic without a specific matching entry in the routing table to GigabitEthernet0/1

**Answer: D**

#### NEW QUESTION 102

Refer to the Exhibit.



After the switch configuration the ping test fails between PC A and PC B Based on the output for switch 1. which error must be corrected?

- A. There is a native VLAN mismatch
- B. Access mode is configured on the switch ports.
- C. The PCs are in the incorrect VLAN
- D. All VLANs are not enabled on the trunk

**Answer: A**

#### NEW QUESTION 105

An engineer must configure a WLAN using the strongest encryption type for WPA2- PSK. Which cipher fulfills the configuration requirement?

- A. WEP
- B. RC4
- C. AES
- D. TKIP

**Answer:** D

**NEW QUESTION 106**

Which statement about Link Aggregation when implemented on a Cisco Wireless LAN Controller is true?

- A. To pass client traffic two or more ports must be configured.
- B. The EtherChannel must be configured in "mode active"
- C. When enabled the WLC bandwidth drops to 500 Mbps
- D. One functional physical port is needed to pass client traffic

**Answer:** C

**NEW QUESTION 108**

When configuring a WLAN with WPA2 PSK in the Cisco Wireless LAN Controller GUI, which two formats are available to select? (Choose two)

- A. ASCII
- B. base64
- C. binary
- D. decimal
- E. hexadecimal

**Answer:** AE

**NEW QUESTION 110**

Drag and drop the functions from the left onto the correct network components on the right

holds the TCP/IP settings to be distributed to the clients

resolves web URLs to IP addresses

stores a list of IP addresses mapped to names

assigns a default gateway to a client

assigns IP addresses to enabled clients

DHCP Server

DNS Server

- A. Mastered
- B. Not Mastered

**Answer:** A

**Explanation:**

holds the TCP/IP settings to be distributed to the clients

resolves web URLs to IP addresses

stores a list of IP addresses mapped to names

assigns a default gateway to a client

assigns IP addresses to enabled clients

DHCP Server

holds the TCP/IP settings to be distributed to the clients

resolves web URLs to IP addresses

assigns IP addresses to enabled clients

DNS Server

stores a list of IP addresses mapped to names

assigns a default gateway to a client

NEW QUESTION 113

.....

## Thank You for Trying Our Product

### We offer two products:

1st - We have Practice Tests Software with Actual Exam Questions

2nd - Questions and Answers in PDF Format

### 200-301 Practice Exam Features:

- \* 200-301 Questions and Answers Updated Frequently
- \* 200-301 Practice Questions Verified by Expert Senior Certified Staff
- \* 200-301 Most Realistic Questions that Guarantee you a Pass on Your First Try
- \* 200-301 Practice Test Questions in Multiple Choice Formats and Updates for 1 Year

**100% Actual & Verified — Instant Download, Please Click**  
**[Order The 200-301 Practice Test Here](#)**