

201 Dumps

TMOS Administration

<https://www.certleader.com/201-dumps.html>



NEW QUESTION 1

A BIG-IP Administrator notices that one of the servers that runs an application is NOT receiving any traffic. The BIG-IP Administrator examines the configuration status of the application and observes the displayed monitor configuration and affected Pool Member status.



What is the possible cause of this issue?

- A. The Node Health Monitor is NOT responding.
- B. The application is NOT responding with the expected Receive String.
- C. HTTP 1.1 is NOT appropriate for monitoring purposes.
- D. The BIG-IP device is NOT able to reach the Pool.

Answer: A

NEW QUESTION 2

Which three iRule events are likely to be seen in iRules designed to select a pool for load balancing? (Choose three.)

- A. CLIENT_DATA
- B. SERVER_DATA
- C. HTTP_REQUEST
- D. HTTP_RESPONSE
- E. CLIENT_ACCEPTED
- F. SERVER_SELECTED
- G. SERVER_CONNECTED

Answer: ACE

NEW QUESTION 3

Refer to the exhibit.

The screenshot shows the BIG-IP configuration interface for a virtual server. The top section displays the Destination Address/Mask as 192.168.162.80, Service Port as 443, and the protocol as HTTPS. The Notify Status to Virtual Address checkbox is checked. The Availability status is 'Available (Enabled)' with a green circle icon. The Synccookie Status is 'Off'. The State is 'Up'. Below this, the Configuration tab is set to 'Basic'. The left sidebar shows the configuration tree with 'SSL Profile (Client)' and 'SSL Profile (Server)' selected. The main area shows the 'Selected' and 'Available' lists for these profiles. The 'Selected' list for the Client profile contains '/Common/clientssl'. The 'Available' list for the Client profile contains '/Common/clientssl-insecure-compatible', '/Common/clientssl-secure', '/Common/clientssl2', and '/Common/crypto-server-default-clientssl'. The 'Selected' list for the Server profile is empty. The 'Available' list for the Server profile contains '/Common/apm-default-serverssl', '/Common/crypto-client-default-serverssl', '/Common/poolip-default-serverssl', and '/Common/serverssl'.

A BIG-IP Administrator needs to deploy an application on the BIG-IP system to perform SSL offload and re-encrypt the traffic to pool members. During testing, users are unable to connect to the application. What must the BIG-IP Administrator do to resolve the issue?

- A. Remove the configured SSL Profile (Client)
- B. Configure Protocol Profile (Server) as splitsession-default-tcp
- C. Enable Forward Proxy in the SSL Profile (Client)
- D. Configure an SSL Profile (Server)

Answer: D

Explanation:

According to the requirements of the subject, the client and server must be configured with ssl profile.

NEW QUESTION 4

How should a BIG-IP Administrator control the amount of traffic that a newly enabled pool member receives.

- A. set the Slow Ramp Time
- B. set a Connection Limit
- C. set the Priority Group Activation
- D. set a Health Monitor

Answer: A

Explanation:

Slow Ramp Time

Specifies the duration during which the system sends less traffic to a newly-enabled pool member. The amount of traffic is based on the ratio of how long the pool member has been available compared to the slow ramp time, in seconds. Once the pool member has been online for a time greater than the slow ramp time, the pool member receives a full proportion of the incoming traffic. Slow ramp time is particularly useful for the least connections load balancing mode.

Setting this to a nonzero value can cause unexpected Priority Group behavior, such as load balancing to a low-priority member even with enough high-priority servers.

NEW QUESTION 5

A virtual server is listening at 10.10.1.100:any and has the following iRule associated with it:

```
when CLIENT_ACCEPTED {
  if {[TCP::local_port] equals 80 } { pool pool1 }
  elseif {[TCP::local_port] equals 443} { pool pool2 }
}
```

If a user connects to 10.10.1.100 and port 22, which pool will receive the request?

- A. pool1
- B. pool2
- C. Non
- D. The request will be dropped.

- E. Unknow
- F. The pool cannot be determined from the information provided.

Answer: D

NEW QUESTION 6

A BIG-IP Administrator sees the following error message in /var/log/ltm diskmonitor: *****; Disk partition shared has less than 30\$ free Which section of the Configuration Utility should the BIG-IP Administrator access to investigate this error message?

- A. Statistics > Analytics
- B. System > File Management
- C. Statistics > Module Statistics > System
- D. System > Disk Management

Answer: D

NEW QUESTION 7

A BIGJP Administrator needs to load a UCS file but must exclude the license file. How should the administrator perform this task?

- A. From the CLI with command U tmsh load /\$sys ucs <ucs filename> no-license
- B. From the GUI, select the UCS file, unchcck the license box, and click restore
- C. From the CLI with command(tmos)« tmsh load /sys ucs <ucs filename> no-license
- D. From the GUI, select the UCS file and click restore

Answer: A

NEW QUESTION 8

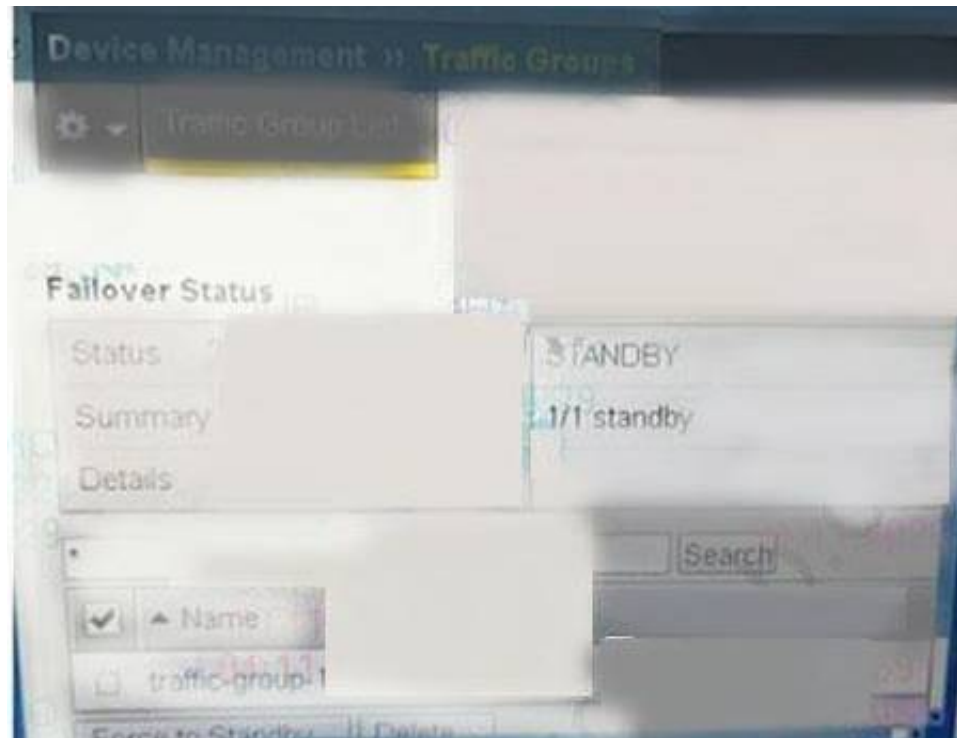
What is the status of a pool member when manual resume is enabled and a health check first fails and then passes?

- A. Offline (Disabled)
- B. Offline (Enabled)
- C. Available (Disabled)
- D. Available (Enabled)

Answer: A

NEW QUESTION 9

Refer to the exhibit.



A BIG-IP Administrator needs to fall over the active device. The administrator logs into the Configuration Utility and navigates to Device Management > Traffic Group. However, Force to Standby is greyed out What is causing this issue?

- A. The BIG-IP Administrator is NOT logged into command line to tail over
- B. The BIG-IP Administrator is on the Standby Device
- C. The BIG-IP Administrator is logged in as root
- D. The BIG-IP Administrator is logged in as administrator

Answer: B

NEW QUESTION 10

What should the BIG-IP Administrator do to apply and activate a hotfix to a BIG-IP device that is currently running version 11.0.0 on active partition HD1.1?

- A. * 1. confirm that 11.0.0 is installed on inactive partition HD1.2* 2. apply a hotfix to partition HD 1.2* 3. activate partition HD1.2
- B. * 1. reactivate the license on partition HD1.1* 2. apply a hotfix to partition HD1.1
- C. * 1. activate partition HD1.2* 2 confirm version 11.0.0 on partition HD1.2* 3. install a hotfix on partition HD1.2
- D. * 1. set partition HD1.2 active* 2. apply a hotfix to partition HD1.2

Answer: A

NEW QUESTION 10

A configuration change is made on the standby member of a device group.
What is displayed as "Recommended Action" on the Device Management Overview screen?

- A. Force active member of device group to standby
- B. Activate device with the most recent configuration
- C. Synchronize the active member configuration to the group.
- D. Synchronize the standby member configuration to the group

Answer: D

NEW QUESTION 15

A BIG-IP Administrator suspects that one of the BIG-IP device power supplies is experiencing power outages.
Which log file should the BIG-IP Administrator check to verify the suspicion?

- A. /var /log/daemon.log
- B. /var/log/kern.log
- C. /var/log/ltm
- D. /var/log/audit

Answer: C

NEW QUESTION 20

A BIG-IP Administrator configures remote authentication and needs to make sure that users can still login even when the remote authentication server is unavailable.
Which action should the BIG-IP Administrators in the remote authentication configuration to meet this requirement?

- A. Set partition access to "All"
- B. Enable the Fallback to Local option
- C. Configure a remote role grove
- D. Configure a second remote user directory

Answer: B

NEW QUESTION 25

A site has six members in a pool. All of the servers have been designed, built, and configured with the same applications. It is known that each client's interactions vary significantly and can affect the performance of the servers. If traffic should be sent to all members on a regular basis, which loadbalancing mode is most effective if the goal is to maintain a relatively even load across all servers?

- A. Ratio
- B. Priority
- C. Observed
- D. Round Robin

Answer: C

NEW QUESTION 28

A set of servers is used for an FTP application as well as an HTTP website via separate BIG-IP Pools. The server support team reports that some servers are receiving a lot more traffic than others.
Which Load Balancing Method should the BIG-IP Administrator apply to even out the connection count?

- A. Ratio (Member)
- B. Least Connections (Member)
- C. Least Connections (Node)
- D. Ratio (Node)

Answer: C

Explanation:

The connection is required to be balanced, and the unit is the server and the application port is the unit, so it is node.

NEW QUESTION 32

Which statement is true about the synchronization process, as performed by the Configuration Utility or by typing `b config sync all`?

- A. The process should always be run from the standby system.
- B. The process should always be run from the system with the latest configuration.
- C. The two `/config/bigip.conf` configuration files are synchronized (made identical) each time the process is run.
- D. Multiple files, including `/config/bigip.conf` and `/config/bigip_base.conf`, are synchronized (made identical) each time the process is run.

Answer: C

NEW QUESTION 35

The BIG-IP Administrator generates a qkview using `"qkview -SO"` and needs to transfer the output file via SCP.

Which directory contains the output file?

- A. /var/log
- B. /var/tmp
- C. /var/local
- D. /var/config

Answer: B

NEW QUESTION 37

A BIG-IP Administrator is unable to connect to the management interface via HTTPS. What is a possible reason for this issue?

- A. The port lockdown setting is configured to Allow None.
- B. An incorrect management route is specified.
- C. The IP address of the device used to access the management interface is NOT included in the "P Allow" list in the Configuration Utility.
- D. The IP address of the device used to access the management interface is NOT included in the "httpd Allow" list in the CLI.

Answer: D

NEW QUESTION 39

Which statement is true concerning SSL termination?

- A. A virtual server that has both ClientSSL and ServerSSL profiles can still support cookie persistence.
- B. Decrypting traffic at the BIG-IP allows the use of iRules for traffic management, but increases the load on the pool member.
- C. When any virtual server uses a ClientSSL profile, all SSL traffic sent to the BIG-IP is decrypted before it is forwarded to servers.
- D. If a virtual server has both a ClientSSL and ServerSSL profile, the pool members have less SSL processing than if the virtual server had only a ClientSSL profile.

Answer: A

NEW QUESTION 43

A site would like to ensure that a given web server's default page is being served correctly prior to sending it client traffic. They assigned the default HTTP monitor to the pool. What would the member status be if it sent an unexpected response to the GET request.?

- A. The pool member would be marked offline (red).
- B. The pool member would be marked online (green).
- C. The pool member would be marked unknown (blue).
- D. The pool member would alternate between red and green.

Answer: B

NEW QUESTION 47

A 816-IP Administrator recently deployed an application. Users are experiencing slow performance with the application on some remote networks. Which two modifications can the BIG-IP Administrator make to address this issue? (Choose two)

- A. Apply dest_addr profile to the Virtual Server
- B. Apply f5-tcp-wan profile to the Virtual Server
- C. Apply f5-tcp-lan profile to the Virtual Server
- D. Apply source_addr profile to the Virtual Server
- E. Apply fasti_4 profile to the Virtual Server

Answer: BC

NEW QUESTION 51

A VLAN has the following objects configured:

Self-IP 10.10.10.100 with port lockdown set to Allow default Virtual server 10.10.10.100:443 with UDP profile enabled Virtual server 10.10.10.0/24 port forwarding virtual server

Global destination NAT forwarding 10.10.10.100 to internal server 172.168.10.100

Which object will process this request when https://10.10.10.100 is entered into a browser?

- A. self-IP 10.10.10.100 with port lockdown set to Allow default
- B. virtual server 10.10.100/24 port forwarding virtual server
- C. global destination NAT forwarding 10.10.10.100 to internal server 172.168.10.100
- D. virtual server 10.10.10.100.443 with UDP profile enabled

Answer: A

NEW QUESTION 54

The current status of a given pool is offline (red). Which condition could explain that state? Assume the descriptions below include all monitors assigned for each scenario.

- A. No monitors are currently assigned to any pool, member or node.
- B. The pool has a monitor assigned to it, and none of the pool members passed the test.
- C. The pool has a monitor assigned to it, and only some of the pool's members passed the test.
- D. A monitor is assigned to all nodes and all nodes have passed the test.
- E. The pool's members have no specific monitor assigned to them.

Answer: B

NEW QUESTION 55

A site has assigned the ICMP monitor to all nodes and a custom monitor, based on the HTTP template, to a pool of web servers. The HTTP based monitor is working in all cases. The ICMP monitor is failing for 2 of the pool member 5 nodes. All other settings are default. What is the status of the monitor is working in all cases?

- A. All pool members are up since the HTTPbased monitor is successful.
- B. All pool members are down since the ICMPbased monitor is failing in some cases.
- C. The pool members whose nodes are failing the ICMPbased monitor will be marked disabled.
- D. The pool members whose nodes are failing the ICMPbased monitor will be marked unavailable.

Answer: D

NEW QUESTION 58

A BIG-IP Administrator finds the following log entry after a report of user issues connecting to a virtual server: 01010201: 2: Inet port exhaustion on 10.70.110.112 to 192.28.123.250:80 (proto 6)

How should the BIG-IP Administrator modify the SNAT pool that is associated with the virtual server?

- A. Remove the SNAT pool and apply SNAT Automap.
- B. Remove an IP address from the SNAT pool.
- C. Add an address to the SNAT pool.
- D. Increase the timeout of the SNAT addresses.

Answer: C

NEW QUESTION 59

A BIG-IP Administrator discovers malicious brute-force attempts to access the BIG-IP device on the management interface via SSH. The BIG-IP Administrator needs to restrict SSH access to the management interface.

Where should this be accomplished?

- A. System > Configuration
- B. Network > Interfaces
- C. Network > Self IPs
- D. System > Platform

Answer: D

NEW QUESTION 60

Where is the loadbalancing mode specified?

- A. within the pool definition
- B. within the node definition
- C. within the virtual server definition
- D. within the pool member definition

Answer: A

NEW QUESTION 63

Which statement is true concerning cookie persistence?

- A. Cookie persistence allows persistence independent of IP addresses.
- B. Cookie persistence allows persistence even if the data are encrypted from client to pool member.
- C. Cookie persistence uses a cookie that stores the virtual server, pool name, and member IP address in clear text.
- D. If a client's browser accepts cookies, cookie persistence will always cause a cookie to be written to the client's file system.

Answer: A

NEW QUESTION 68

A BIG-IP Administrator needs to restore an encrypted UCS archive from the command line using the TMSH utility. Which TMSH command should the BIG-IP Administrator use to accomplish this?

- A. load/sys ucs <filepath> passphrase <password>
- B. load/sys config file <filepath> passphrase <password>
- C. load/sys config file <filepath>
- D. load/sys ucs <filepath> no-license

Answer: A

NEW QUESTION 73

The BIG-IP appliance fails to boot. The BIG-IP Administrator needs to run the End User Diagnostics (EUD) utility to collect data to send to F5 Support. Where can the BIG-IP Administrator access this utility?

- A. Console Port

- B. Internal VLAN interface
- C. External VLAN interface
- D. Management Port

Answer: A

NEW QUESTION 77

A web server administrator informs the BIG-IP Administrator that web servers are overloaded Starting next month, the BIG-IP device will terminate SSL to reduce web server load. The BIG-IP device is ready using client SSL client profile and Rules on HTTP level. What actions should the BIG-IP Administrators to achieve the desired configuration?

- A. Remove the server SSL profile and configure the Pool Members to use HTTP
- B. Remove the client SSL profile and configure the Pool Members to US HTTP
- C. Remove the chart SSL profile and change the Virtual Server to accept HTTP
- D. Remove the server SSL profile and change the Virtual Server to accept HTTP traffic

Answer: A

NEW QUESTION 80

Which IP address will the client address be changed to when SNAT automap is specified within a Virtual Server configuration?

- A. The floating self-IP address on the VLAN where the packet leaves the system.
- B. The floating self-IP address on the VLAN where the packet arrives on the system.
- C. It will alternate between the floating and non floating self-IP address on the VLAN where the packet leaves the system so that port exhaustion is avoided.
- D. It will alternate between the floating and non floating self-IP address on the VLAN where the packet arrives on the system so that port exhaustion is avoided.

Answer: A

NEW QUESTION 83

Assume a client's traffic is being processed only by a NAT; no SNAT or virtual server processing takes place. Also assume that the NAT definition specifies a NAT address and an origin address while all other settings are left at their defaults. If the origin server were to initiate traffic via the BIG-IP, what changes, if any, would take place when the BIG-IP processes such packets?

- A. The BIG-IP would drop the request since the traffic didn't arrive destined to the NAT address.
- B. The source address would not change, but the destination address would be changed to the NAT address.
- C. The source address would be changed to the NAT address and destination address would be left unchanged.
- D. The source address would not change, but the destination address would be changed to a self-IP of the BIG-IP.

Answer: C

NEW QUESTION 86

Assuming that systems are synchronized, which action could take place if the fail over cable is connected correctly and working properly, but the systems cannot communicate over the network due to external network problems?

- A. If network failover is enabled, the standby system will assume the active mode.
- B. Whether or not network failover is enabled, the standby system will stay in standby mode.
- C. Whether or not network failover is enabled, the standby system will assume the active mode.
- D. If network failover is enabled, the standby system will go into active mode but only until the network recovers.

Answer: B

NEW QUESTION 87

A virtual server at 10.10.1.100:80 has the rule listed below applied.

```
when HTTP_REQUEST { if {[HTTP::uri] ends_with "htm" } { pool pool1 } else if {[HTTP::uri] ends_with "xt" } { pool pool2 }
```

If a user connects to <http://10.10.1.100/foo.txt> which pool will receive the request?

- A. pool1
- B. pool2
- C. Non
- D. The request will be dropped.
- E. Unknow
- F. The pool cannot be determined from the information provided.

Answer: B

NEW QUESTION 92

A BIG-IP Administrator wants to add the ASM Module to an HA pair of BIG-IP devices. The BIG-IP Administrator has already installed a new Add-On License on both devices in the HA pair. What should the BIG-IP Administrator do next to use the module?

- A. Provision the new module on both BIG-IP device's
- B. Synchronize both BIG-IP devices
- C. Reboot both BIG-IP devices
- D. Reactivate the Licenses on both BIG IP devices

Answer: A

NEW QUESTION 94

During a maintenance window, an EUD test was executed and the output displayed on the screen. The BIG-IP Administrator did NOT save the screen output. The BIG-IP device is currently handling business critical traffic. The BIG-IP Administrator needs to minimize impact. What should the BIG-IP Administrator do to provide the EUD results to F5 Support?

- A. Boot the device into EUD then collect output from console
- B. Execute EUD from tmsh and collect output from console
- C. Collect file /var/log/messages
- D. Collect file /shared/log/eud.log

Answer: D

NEW QUESTION 97

A BIG-IP Administrator reviews the log files to determine the cause of a recent problem and finds the following entry.
Mar 27.07.58.48 local/BIG-IP notice mcpd {5140} 010707275 Pool member 172.16.20.1.10029 monitor status down.
What is the cause of this log message?

- A. The pool member has been disabled.
- B. The pool member has been marked as Down by the BIG-IP Administrator.
- C. The monitor attached to the pool member needs a higher timeout value.
- D. The monitor attached to the pool member has failed.

Answer: D

NEW QUESTION 100

A BIG-IP Administrator needs to remove a pool specific health monitor. There is a pool named Best Pool with two members, one named Best pool member and one named Best pool member2. In the Local Traffic section of the administrative GUI, which steps should the BIG-IP Administrator take to remove a pool level monitor?

- A. Pool > Pool List > Best Pool > Members > Health Monitors
- B. Nodes > Node List> Best _pool_member1 > Heath Monitors
- C. Monitors > Monitor Name> Instances
- D. Pool > Pool List> Best Pool > Health Monitors

Answer: D

NEW QUESTION 103

What is the purpose of MAC masquerading?

- A. to prevent ARP cache errors
- B. to minimize ARP entries on routers
- C. to minimize connection loss due to ARP cache refresh delays
- D. to allow both BIGIP devices to simultaneously use the same MAC address

Answer: C

NEW QUESTION 108

A BIG-IP Administrator makes a configuration change to the BIG-IP device. Which file logs the message regarding the configuration change?

- A. /var/log/messages
- B. /var/log/audit
- C. /var/log/user.log
- D. /var/log/secure

Answer: B

Explanation:

About audit logging

Audit logging is an optional feature that togs messages whenever a BIG-IP® system object, such as a virtual server or a load balancing pool, is confined (that is, created, modified, or deleted). The BiGIP system logs the messages for these auditing events in the file /var/log/audit

There are three ways that objects can be configured

- By user action
- By system action
- By loading configuration data

Whenever an object is configured in one of these ways, the BIG-IP system logs a message to the audit log

NEW QUESTION 112

A BIG-IP Administrator configures a Virtual Server. Users report that they always receive a TCP RST packet to the BIG-IP system when attempting to connect to it. What is the possible reason for this issue?

- A. The virtual server Type is set to Internal
- B. The virtual server Type is set to Reject
- C. The virtual server Type is set to Drop
- D. The virtual server Type is set to Stateless

Answer: B

NEW QUESTION 114

Refer to the exhibit.



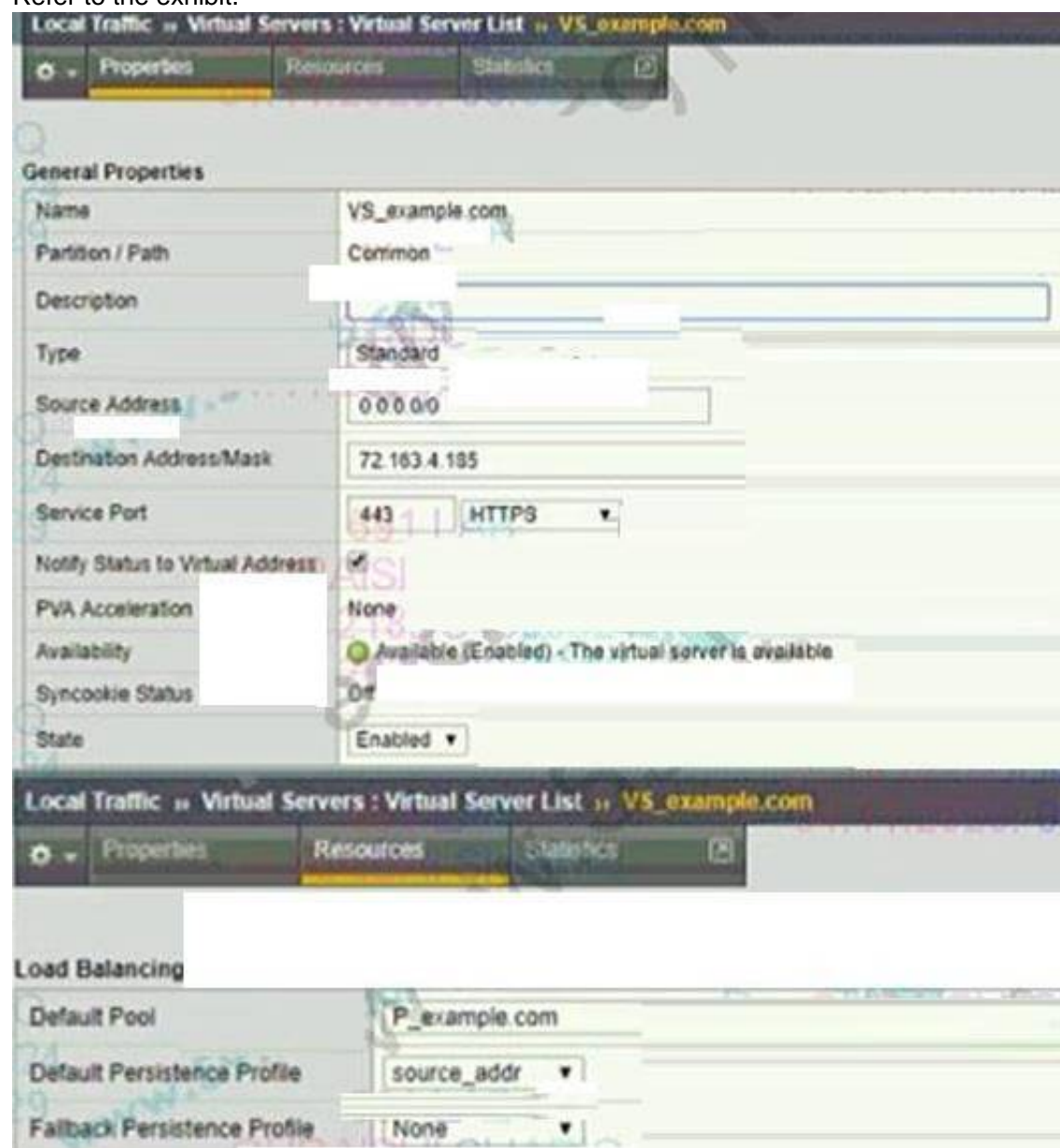
A pool member fails the monitor checks for about 30 minutes and then starts passing the monitor checks. New traffic is Not being sent to the pool member. What is the likely reason for this problem?

- A. The pool member is disabled
- B. Monitor Type is TCP Half Open
- C. Manual resume is enabled
- D. Time Until Up is zero

Answer: C

NEW QUESTION 117

Refer to the exhibit.



An organization is reporting slow performance accessing their Intranet website, hosted in a public cloud. All employees use a single Proxy Server with the public IP of 104.219.110.168 to connect to the Internet. What should the BIG-IP Administrator of the Intranet website do to fix this issue?

- A. Change Source Address to 104.219.110.168/32
- B. Change Load Balancing Method to Least Connection
- C. Change Fallback Persistence Profile to source_addr
- D. Change Default Persistence Profile to cookie

Answer: D

NEW QUESTION 122

Refer to the exhibit.

Address	Ratio	Priority Group	Connection Limit	Partition
10.21.0.101	10	4 (Active)	0	Common
10.21.0.102	10	6 (Active)	0	Common
10.21.0.103	10	1 (Active)	0	Common
10.21.0.104	10	7 (Active)	0	Common
10.21.0.105	10	1 (Active)	0	Common

Which two pool members are eligible to receive new connections? (Choose two)

- A. 10.21.0.102.80
- B. 10.21.0.104.80
- C. 10.21.0.105.80
- D. 10.21.0.101.80
- E. 10.21.0.103.80

Answer: BD

NEW QUESTION 126

A BIG-IP Administrator needs to apply a license to the BIG-IP system to increase the user count from the base license. Which steps should the BIG-IP Administrator?

- A. System License > Re-activate> Add-On Registration> Edit
- B. System > License > Re-activate > Base Registration> Edit
- C. Device Management > Devices > Select BIG-IP System > Update
- D. System > Configuration > Device > General

Answer: A

NEW QUESTION 131

A BIG-IP Administrator suspects that one of the BIG-IP device power supplies is experiencing power outages. Which log file should the BIG-IP Administrator check to verify the suspicion?

- A. /var /log/daemon.log
- B. /var/log/kern.log
- C. /var/log/ltm
- D. /var/log/audit

Answer: C

NEW QUESTION 135

All pool members are online. All other virtual server settings are at default What might after the load balancing behavior?

- A. enabling SNAT automap
- B. enabling a fallback host in the http profile
- C. adding a oneconnect profile
- D. adding a persistence profile

Answer: D

NEW QUESTION 137

Assume a BIG-IP has no NATs or SNATs configured. Which two scenarios are possible when client traffic arrives on a BIG-IP that is NOT destined to a self-IP? (Choose two.)

- A. If the destination of the traffic does not match a virtual server, the traffic will be discarded.
- B. If the destination of the traffic does not match a virtual server, the traffic will be forwarded based on routing tables.
- C. If the destination of the traffic matches a virtual server, the traffic will be processed per the virtual server definition.
- D. If the destination of the traffic matches a virtual server, the traffic will be forwarded, but it cannot be loadbalanced since no SNAT has been configured.

Answer: AC

NEW QUESTION 138

An LTM device has a virtual server mapped to www5f.com with a pool assigned. The objects are defined as follows:

Virtual server. Destination 192.168.245.100.443 netmask 255.255.255.0 Persistence: Source address persistence netmask 255.0.0.0 SNAT:AutoMap

Profiles: HnP/TCP

How should the BIG-IP Administrator modify the persistence profile so that each unique IP address creates a persistence record?

- A. netmask 0.0.0.0
- B. netmask 255.255.255.255
- C. netmask 255.255.0.0
- D. netmask 255.256.255.0

Answer: B

NEW QUESTION 142

An ecommerce company is experiencing latency issues with online shops during Black Friday's peak season. The BIG-IP Administrator detects an overall high CPU load on the BIG-IP device and wants to move the top utilized Virtual Servers to a dedicated BIG-IP device.

Where should the BIG-IP Administrator determine the problematic Virtual Servers?

- A. System > Plattform
- B. Local Traffic > Virtual Servers > Virtual Server List
- C. Local Traffic > Network Map
- D. Statistics > Module Statistics > Local Traffic > Virtual Servers

Answer: D

NEW QUESTION 143

Refer to the exhibit.

A user notifies the BIG-IP Administrator that http://remote company.com is NOT accessible. Remote access to company resources must be encrypted.

What should the BIG-IP Administrator do to fix the issue?

- A. Change the Listening Port on remote.company.com_vs to Port 80
- B. Add a Pool to the Virtual Server remote.company.com_VS
- C. Add an iRule to remote.company.com_vs to redirect Traffic to HTTPS
- D. Change the Type of the Virtual Server remote.company.com_vs to Forwarding

Answer: C

Explanation:

Requiring all traffic to be HTTPS access requires HTTP requests to be redirected directly to HTTPS.

NEW QUESTION 147

A BIG-IP Administrator opens a case with F5 Support. The support engineer requests the BIG-IP appliance chassis serial number.

Which TMSH command will provide this information?

- A. . list /sys software
- B. show /sys version
- C. list/sys diags
- D. show /sys hardware

Answer: D

NEW QUESTION 148

A BIG-IP has two load balancing virtual servers at 150.150.10.10:80 and 150.150.10.10:443. The port 80 virtual server has SNAT automap configured. There is also a SNAT configured at 150.150.10.11 set for a source address range of 200.200.1.0 / 255.255.255.0. All other settings are at their default states. If a client with the IP address 200.200.1.1 sends a request to https://150.150.10.10, what is the source IP address when the associated packet is sent to the pool member?

- A. 200.200.1.1
- B. 150.150.10.11
- C. Floating self IP address on VLAN where the packet leaves the system
- D. Floating self IP address on VLAN where the packet arrives on the system

Answer: B

NEW QUESTION 150

Generally speaking, should the monitor templates be used as production monitors or should they be customized prior to use.

- A. Most templates, such as http and tcp, are as effective as customized monitors.
- B. Monitor template customization is only a matter of preference, not an issue of effectiveness or performance.
- C. Most templates, such as https, should have the receive rule customized to make the monitor more robust.
- D. While some templates, such as ftp, must be customized, those that can be used without modification are not improved by specific changes.

Answer: C

NEW QUESTION 151

A BIG-IP Administrator needs to view the CPU utilization of a particular Virtual Server. Which section of the Configuration Utility should the administrator use for this purpose?

- A. Statistics > Module Statistics > Local Traffic > Virtual Addresses
- B. Statistics > Module Statistics > Traffic Summary
- C. Statistics > Analytics > Process CPU Utilization
- D. Statistics > Module Statistics > Local Traffic > Virtual Servers

Answer: D

NEW QUESTION 152

Which log file should the BIG-IP Administrator check to determine if a specific user tried to log in to the BIG-IP Configuration by utility?

- A. /var/log/pam/tally/log
- B. /var/log/secure
- C. /var/log/trn
- D. /var/log/httpd

Answer: B

NEW QUESTION 156

Refer to the exhibit.

A BIG-IP Administrator configures the Virtual Server to pass HTTP traffic. Users report that they are unable to access the application. What should the administrator do to resolve this issue?

- A. Change the Virtual Server name
- B. Disable the State
- C. Reconfigure the Source Address
- D. Reconfigure the Pool Members

Answer: D

NEW QUESTION 158

The ICMP monitor has been assigned to all nodes. In addition, all pools have been assigned custom monitors. The pool is marked available. If a pool is marked available (green) which situation is sufficient to cause this?

- A. All of the pool member nodes are responding to the ICMP monitor as expected.
- B. Less than 50% of the pool member nodes responded to the ICMP echo request.
- C. All of the members of the pool have had their content updated recently and their responses no longer match the monitor.
- D. Over 25% of the pool members have had their content updated and it no longer matches the receive rule of the custom monitor.
- E. The other respond as expected.

Answer: D

NEW QUESTION 159

Refer to the exhibit.



According to the shown Configuration Utility strings What is the setting of the User Directory configuration under the Authentication submenu?

- A. Local
- B. Managed
- C. Remote-TACACS+
- D. Default system configuration

Answer: C

NEW QUESTION 163

Which statement describes a typical purpose of iRules?

- A. iRules can be used to add individual control characters to an HTTP data stream.
- B. iRules can be used to update the timers on monitors as a server load changes.
- C. iRules can examine a server response and remove it from a pool if the response is unexpected.
- D. iRules can be used to look at client requests and server responses to choose a pool member to select for load balancing

Answer: A

NEW QUESTION 165

Refer to the exhibit.



How many nodes are represented on the network map shown?

- A. Four
- B. Three
- C. One
- D. Two

Answer: B

NEW QUESTION 169

Given that VLAN failsafe is enabled on the external VLAN and the network that the active BIG-IP's external VLAN is connected to has failed, which statement is always true about the results?

- A. The active system will note the failure in the HA table.
- B. The active system will reboot and the standby system will go into active mode.
- C. The active system will failover and the standby system will go into active mode.
- D. The active system will restart the traffic management module to eliminate the possibility that BIG-IP is the cause for the network failure.

Answer: A

NEW QUESTION 171

Active connections to pool members are unevenly distributed. The load balancing method is Least Connections (member) Priority Group Activation is disabled. What is a potential cause of the event distribution?

- A. Priority Group Activation is disabled
- B. SSL Profile Server is applied
- C. Persistence profile is applied
- D. incorrect load balancing method

Answer: C

NEW QUESTION 175

A BIG-IP Administrator needs to have a BIG-IP linked to two upstream switches for resilience of the external network. The network engineer who is going to configure the switch instructs the BIG-IP Administrator to configure interface binding with LACP. Which configuration should the administrator use?

- A. A virtual server with an LACP profile and the switches' management IPs as pool members.
- B. A virtual server with an LACP profile and the interfaces connected to the switches as pool members.
- C. A Trunk listing the allowed VLAN IDs and MAC addresses configured on the switches.
- D. A Trunk containing an interface connected to each switch.

Answer: D

NEW QUESTION 177

When configuring a Virtual Server to use an iRule with an HTTP_REQUEST event, which lists required steps in a proper order to create all necessary objects?

- A. create profiles, create the iRule, create required pools, create the Virtual Server
- B. create the Virtual Server, create required pools, create the iRule, edit the Virtual Server
- C. create a custom HTTP profile, create required pools, create the Virtual Server, create the iRule
- D. create required pools, create a custom HTTP profile, create the iRule, create the Virtual Server

Answer: B

NEW QUESTION 181

How should a BIG-IP Administrator persistent sessions from being sent to a pool member so that the server administrator can perform maintenance?

- A. force the pool member offline
- B. disable the pool member
- C. add an additional monitor to the pool
- D. disable the virtual server

Answer: A

NEW QUESTION 183

A BIG-IP Administrator is performing maintenance on the active BIG-IP device of an HA pair. The BIG-IP Administrator needs to minimize traffic disruptions. What should the BIG-IP Administrator do to start the maintenance activity?

- A. Reboot the BIG-IP device.
- B. Move resources to a new Traffic Group.
- C. Force the BIG-IP device to standby.
- D. Disable switch ports of the BIG-IP device.

Answer: C

NEW QUESTION 187

When upgrading a BIG-IP redundant pair, what happens when one system has been updated but the other has not?

- A. Synching should not be performed.
- B. The first system to be updated will assume the Active role.
- C. This is not possible since both systems are updated simultaneously.
- D. The older system will issue SNMP traps indicating a communication error with the partner.

Answer: A

NEW QUESTION 191

A virtual server is listening at 10.10.1.100:80 and has the following iRule associated with it:

```
when HTTP_REQUEST { if {[HTTP::uri] ends_with "txt" } { pool pool1 } elseif {[HTTP::uri] ends_with "php" } { pool pool2 }
```

If a user connects to <http://10.10.1.100/foo.html>, which pool will receive the request?

- A. pool1
- B. pool2
- C. Non
- D. The request will be dropped.
- E. Unknow
- F. The pool cannot be determined from the information provided.

Answer: D

NEW QUESTION 194

Which two methods can be used to determine which BIG-IP is currently active? (Choose two.)

- A. The bigtop command displays the status.
- B. Only the active system's configuration screens are active.
- C. The status (Active/Standby) is embedded in the command prompt.
- D. The ifconfig a command displays the floating addresses on the active system.

Answer: AC

NEW QUESTION 198

A BIG-IP Administrator needs to apply a health monitor for a pool of database servers named DB_Pool that uses TCP port 1521.

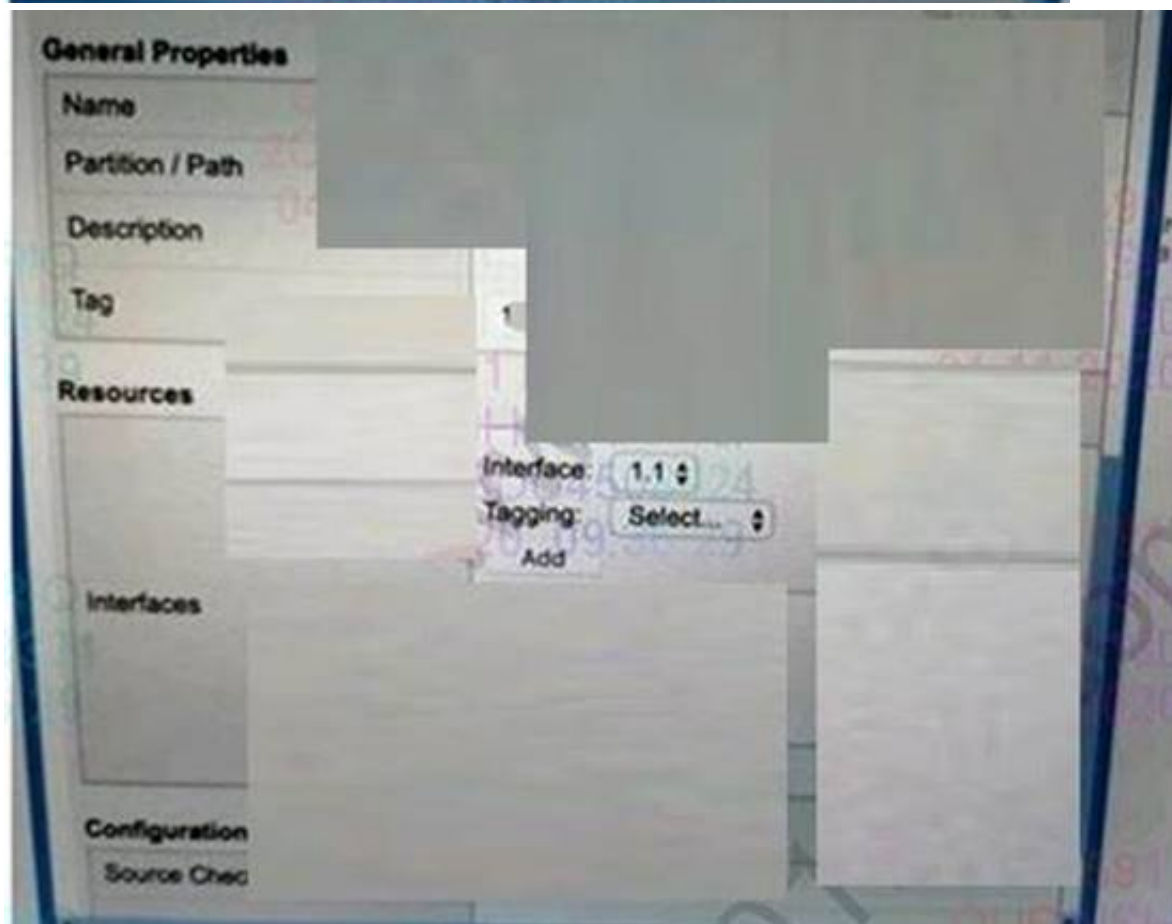
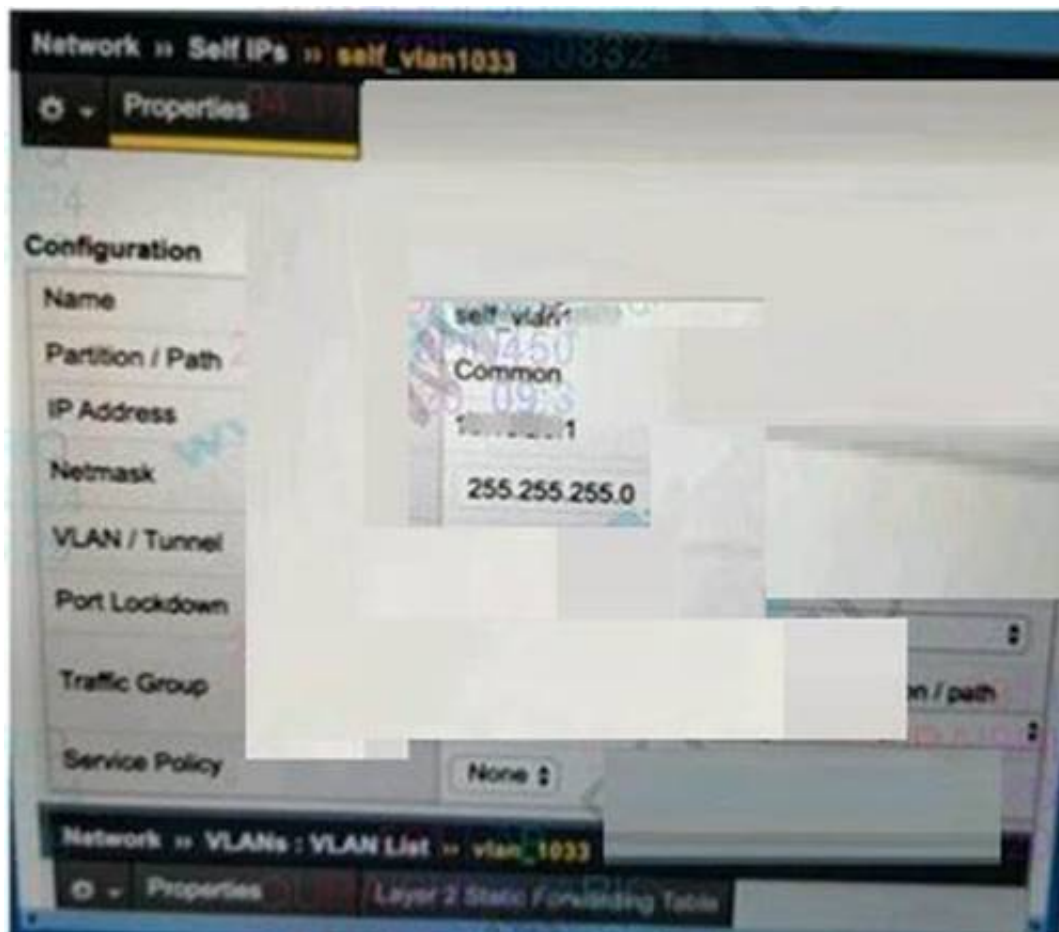
Where should the BIG-IP Administrator apply this monitor?

- A. Local Traffic > Profiles » Protocol > TCP
- B. Local Traffic > Nodes > Default Monitor
- C. Local Traffic > Pools > De Pool > Members
- D. Local Traffic > Pools > DB Pool > Properties

Answer: D

NEW QUESTION 202

Refer to the exhibit



The network team creates a new VLAN on the switches. The BIG-IP Administrator needs to create a configuration on the BIG-IP device. The BIG-IP Administrator creates a new VLAN and Self IP, but the servers on the new VLAN are NOT reachable from the BIG-IP device. Which action should the BIG-IP Administrators to resolve this issue?

- A. Set Port Lockdown of Set IP to Allow All
- B. Change Auto Last Hop to enabled
- C. Assign a physical interface to the new VLAN
- D. Create a Floating Set IP Address

Answer: C

NEW QUESTION 204

Which parameters are set to the same value when a pair of BIG-IP devices are synchronized?

- A. host names
- B. system clocks
- C. profile definitions
- D. VLAN failsafe settings
- E. MAC masquerade addresses

Answer: C

NEW QUESTION 206

Refer to the exhibit.

Which TMSH command generated this output?

- A. tmsh list /cm sync-status

- B. tmsh show /sys sync-status
- C. tmsh list /sys sync-status
- D. tmsh show /cm sync status

Answer: D

NEW QUESTION 208

Refer to the exhibit.



How many nodes are represented on the network map shown?

- A. Four
- B. Three
- C. One
- D. Two

Answer: B

NEW QUESTION 210

Refer to the exhibit.

A BIG-IP Administrator configures a new VLAN on an HA pair of devices that does NOT yet have any traffic. This action causes the assigned traffic group to fail over to the standby device.

Which VLAN setting should be changed to prevent this issue?

- A. Auto Last Hop
- B. Fail-safe
- C. Customer Tag
- D. Source Check

Answer: B

NEW QUESTION 211

For a given Virtual Server, the BIG-IP must perform SSL Offload and negotiate secure communication over TLSv1.2 only. What should the BIG-IP Administrator do to meet this requirement?

- A. Configure a custom SSL Profile (Client) and select no TLSv1 in the options list
- B. Configure a custom SSL Profile (Client) with a custom TLSV1.2 cipher string
- C. Configure a custom SSL Profile (Server) and select no TLSv1 in the options list

D. Configure a custom SSL Profile (Server) with a custom TLSV1.2 cipher string

Answer: B

Explanation:

no TLSv1 only disables TLS1.0, TLS1.1 is still used and does not meet the requirements.

NEW QUESTION 212

A BIG-IP Administrator must configure the BIG-IP device to send system log messages to a remote syslog server. In addition, the log messages need to be sent over TCP for guaranteed delivery. What should the BIG-IP Administrator configure?

- A. syslog-ng
- B. Request Logging Profile
- C. HSL Logging
- D. Remote Logging

Answer: D

NEW QUESTION 214

The BIG-IP Administrator needs to perform a BIG-IP device upgrade to the latest version of TMOS. Where can the administrator obtain F5 documentation on upgrade requirements?

- A. AskF5
- B. DevCentral
- C. Bug Tracker
- D. iHealth

Answer: A

NEW QUESTION 215

A virtual server is defined using a source address based persistence profile. The last five connections were A, B, C, A, C. Given the conditions shown in the graphic, if a client with IP address 205.12.45.52 opens a connection to the virtual server, which member will be used for the connection?

- A. 10.10.20.1:80
- B. 10.10.20.2:80
- C. 10.10.20.3:80
- D. 10.10.20.4:80
- E. 10.10.20.5:80

Answer: B

NEW QUESTION 216

During a high-demand traffic event, the BIG-IP Administrator needs to limit the number of new connections per second allowed to a Virtual Server. What should the administrator apply to accomplish this task?

- A. An HTTP Compression profile to the Virtual Server
- B. A connection rate limit to the Virtual Server
- C. A connection limit to the Virtual Server
- D. A OneConnect profile to the Virtual Server

Answer: B

NEW QUESTION 221

Refer to the exhibit.

Filesystem	Size	Used	Avail	Use%	Mounted on
/dev/md4	427M	427M	0	100%	/
none	16G	2.3M	16G	1%	/dev/shm
/dev/md6	3.2G	78M	2.9G	3%	/config
/dev/md5	4.0G	3.1G	696M	82%	/usr
/dev/md7	3.0G	663M	2.2G	24%	/var
/dev/md1	30G	7.6G	21G	27%	/shared
/dev/md2	6.9G	191M	6.4G	3%	/var/log
none	16G	51M	16G	1%	/shared/rnd.1.2
none	16G	21M	16G	1%	/var/tmstat
none	16G	1.6M	16G	1%	/var/run
prompt	4.0M	28K	4.0M	1%	/var/prompt
none	16G	0	16G	0%	/var/loipc

The BIG-IP Administrator is investigating disk utilization on the BIG-IP device. What should the BIG-IP Administrator check next?

- A. Large files on the / file system
- B. Results from the EUD test

- C. Results from the platform diagnostics test
- D. Large files on /usr file system

Answer: A

NEW QUESTION 225

One of the two members of a device group has been decommissioned. The BIG-IP Administrator tries to delete the device group, but is unsuccessful. Prior to removing the device group, which action should be performed?

- A. Disable the device group
- B. Remove all members from the device group
- C. Remove the decommissioned device from the device group
- D. Make sure all members of the device group are in sync

Answer: B

NEW QUESTION 227

A BIG-IP device sends out the following SNMP trap:

big-ipo.f5.com - bigipExternalLinkChange Link: 1.0 is DOWN

Where in the BIG-IP Configuration utility should the BIG-IP Administrator verify the current status of Link 1.0?

- A. System > Platform
- B. Network > Trunks > Trunk List
- C. Statistics > Performance > System
- D. Network > Interfaces > Interface List

Answer: D

Explanation:

1.1 is a physical interface, you can see the interface status from the physical interface in the network.

NEW QUESTION 228

Users report that traffic is negatively affected every time a BIG-IP device fails over. The traffic becomes stabilized after a few minutes. What should the BIG-IP Administrator do to reduce the impact of future failovers?

- A. Enable Failover Multicast Configuration
- B. Set up Failover Method to HA Order
- C. Configure MAC Masquerade
- D. Configure a global SNAT Listener

Answer: C

NEW QUESTION 233

A BIG-IP Administrator configures a node with a standard icmp Health Monitor. The Node shows as DOWN although the Backend Server is configured to answer ICMP requests. Which step should the administrator take next to find the root cause of this issue?

- A. Run a curl Run a qkview
- B. Run a qkview
- C. Runatcpdump
- D. Runanssldump

Answer: C

NEW QUESTION 236

Which action will take place when a failover trigger is detected by the active system?

- A. The active device will take the action specified for the failure.
- B. The standby device also detects the failure and assumes the active role.
- C. The active device will wait for all connections to terminate and then failover.
- D. The standby device will begin processing virtual servers that have failed, but the active device will continue servicing the functional virtual servers.

Answer: A

NEW QUESTION 238

Assume a virtual server is configured with a ClientSSL profile. What would the result be if the virtual server's destination port were not 443?

- A. SSL termination could not be performed if the virtual server's port was not port 443.
- B. Virtual servers with a ClientSSL profile are always configured with a destination port of 443.
- C. As long as client traffic was directed to the alternate port, the virtual server would work as intended.
- D. Since the virtual server is associated with a ClientSSL profile, it will always process traffic sent to port 443.

Answer: C

NEW QUESTION 241

Refer to the exhibit. The BIG-IP Administrator needs to avoid overloading any of the Pool Members with connections, when they become active.

What should the BIG-IP Administrator configure to meet this requirement?

- A. Different Ratio for each member
- B. Same Priority Group to each member
- C. Action On Service Down to Reselect
- D. Slow Ramp Time to the Pool

Answer: D

NEW QUESTION 245

A local user account (Users) on the BIG-IP device is assigned the User Manager role. User1 attempts to modify the properties of another account (User2), but the action fails. The BIG-IP Administrator can successfully modify the User2 account.

Assuming the principle of least privilege, what is the correct way to allow User 1 to modify User2 properties?

- A. Move User2 to the same partition as User1
- B. Grant User1 administrative privileges
- C. Move User to the same partition as User2.
- D. Modify the partition access for User 1

Answer: D

NEW QUESTION 249

A BIG-IP Administrator needs to determine which pool members in a pool have been manually forced offline and are NOT accepting any new traffic. Which status icon indicates this?

- A)
- B)
- C)
- D)

- A. Option A
- B. Option B
- C. Option C
- D. Option D

Answer: A

NEW QUESTION 253

A BIG-IP Administrator makes a configuration change to a Virtual Server on the Standby device of an HA pair. The HA pair is currently configured with Auto-Sync Enabled. What effect will the change have on the HA pair configuration?

- A. The change will be undone when Auto-Sync propagates the config to the HA pair.
- B. The change will be propagated next time a configuration change is made on the Active device.
- C. The change will be undone next time a configuration change is made on the Active device.
- D. The change will take effect when Auto-Sync propagates the config to the HA pair.

Answer: D

NEW QUESTION 258

A BIG-IP Administrator needs to install a HotFix on a standalone BIG-IP device, which has HD1.1 as the Active Boot Location. The BIG-IP Administrator has already re-activated the license and created an UCS archive of the configuration. In which sequence should the BIG-IP Administrator perform the remaining steps?

- A. Install HotFix in HD 1.1, Reboot the BIG-IP device
- B. Install UCS Archive
- C. Install HotFix in HD 1.2, Install base Image in HD 1.2, Activate HD1.2
- D. Install base Image in HD1.2, Install HotFix in HD1.2, Activate HD 1.2
- E. Activate HD 1.2, Install base image in HD 1.2. Install HotFix in HD 1.2

Answer: C

NEW QUESTION 259

A site needs to terminate client HTTPS traffic at the BIG-IP and forward that traffic unencrypted. Which two are profile types that must be associated with such a virtual server? (Choose two.)

- A. TCP
- B. HTTP
- C. HTTPS
- D. ClientSSL
- E. ServerSSL

Answer: AD

NEW QUESTION 262

.....

Thank You for Trying Our Product

* 100% Pass or Money Back

All our products come with a 90-day Money Back Guarantee.

* One year free update

You can enjoy free update one year. 24x7 online support.

* Trusted by Millions

We currently serve more than 30,000,000 customers.

* Shop Securely

All transactions are protected by VeriSign!

100% Pass Your 201 Exam with Our Prep Materials Via below:

<https://www.certleader.com/201-dumps.html>