

## N10-007 Dumps

### CompTIA Network+ N10-007

<https://www.certleader.com/N10-007-dumps.html>



**NEW QUESTION 1**

- (Exam Topic 1)

A network administrator has been given a network of 172.16.85.0/21 and wants to know the usable range of IP addresses on that subnet. Which of the following indicates the correct IP address range?

- A. 172.16.80.0-172.16.85.254
- B. 172.16.80.0-172.16.88.255
- C. 172.16.80.1-172.16.87.254
- D. 172.16.80.1-172.16.85.255

**Answer:** C

**NEW QUESTION 2**

- (Exam Topic 1)

Which of the following wireless connection types utilize MIMO on non-overlapping channels? (Choose two.)

- A. 802.11a
- B. 802.11ac
- C. 802.11b
- D. 802.11g
- E. 802.11n

**Answer:** BE

**NEW QUESTION 3**

- (Exam Topic 1)

Which of the following backup techniques is used to capture all the data that has changed since the least full backup?

- A. Incremental
- B. Replica
- C. Different
- D. Snapshot

**Answer:** C

**NEW QUESTION 4**

- (Exam Topic 1)

A network technician configures a firewall's ACL to allow outgoing traffic for several popular services such as email and web browsing. However, after the firewall's deployment, users are still unable to retrieve their emails. Which of the following would BEST resolve this issue?

- A. Allow the firewall to accept inbound traffic to ports 25, 67, 179, and 3389
- B. Allow the firewall to accept inbound traffic to ports 80, 110, 143, and 443
- C. Set the firewall to operate in transparent mode
- D. Allow the firewall to accept inbound traffic to ports 21, 53, 69, and 123

**Answer:** B

**NEW QUESTION 5**

- (Exam Topic 1)

A technician is configuring a default route with IPv6. Which of the following is the correct setting for an IPV6 default rout?

- A. :: 1
- B. :: /0
- C. 2001: :0/64
- D. FE80 : :0/64

**Answer:** C

**NEW QUESTION 6**

- (Exam Topic 1)

Employees want the ability to use personal devices on the guest network while working out at the company gym. In order to meet the request, which of the following policies requires employee adherence?

- A. AUP
- B. SLA
- C. NDA
- D. MOU

**Answer:** A

**NEW QUESTION 7**

- (Exam Topic 1)

A new building needs to be joined to an existing network, but management has decided that running fiber is too expensive. Since the buildings are bout 1000ft (305m) apart, the IT department has been asked to propose alternatives. Which of the following is the BEST device to add to each building to facilitate the

extension of the network while meeting budgetary demands?

- A. Switch
- B. Router
- C. Media converter
- D. PTP wireless

**Answer:** D

#### NEW QUESTION 8

- (Exam Topic 1)

A penetration tester has been tasked with reconnaissance to determine which ports are open on the network. Which of the following tasks should be done FIRST? (Choose two.)

- A. Network scan
- B. Banner grab
- C. Tracert
- D. DHCP server check
- E. Brute-force attack

**Answer:** AC

#### NEW QUESTION 9

- (Exam Topic 1)

A technician is installing a new wireless badging system on a hospital network. The requirements of the badging system are for it to have its own SSID and low power levels. The badging system has to cover 99.9% of the hospital. Which of the following is the BEST action to take to meet the system requirements?

- A. Install additional WAPs
- B. Install external antennas
- C. Move the WAPs closer to the more populated area
- D. Change the antenna types

**Answer:** A

#### NEW QUESTION 10

- (Exam Topic 1)

A network administrator is redesigning network security after an attack. During the attack, an attacker used open cubicle location to attach devices to the network. The administrator wants to be able to monitor future attack in a safe environment and determine the method of attack. Which of the following should the administrator do to Best meet this requirement?

- A. Create a VLAN for the unused ports and create a honeypot on the VLAN.
- B. Install a BPDU guard on switchports and enable STP
- C. Create a DMZ for public server and secure a segment for the internal network
- D. Install antivirus software and set an ACL on the servers.

**Answer:** A

#### NEW QUESTION 10

- (Exam Topic 1)

A technician must determine if a web page user's visits are connecting to a suspicious website's IP address in the background. Which of the following tools would provide the information on TCP connections?

- A. netstat
- B. tracert
- C. arp
- D. ipconfig
- E. route

**Answer:** A

#### NEW QUESTION 13

- (Exam Topic 1)

A technician attempts to replace a switch with a new one of similar model from the same vendor. When the technician moves the fiber and SFP plug, the switch does not completely boot up. Considering that the config files are the same, which of the following is the MOST likely cause of the failure?

- A. Damaged fiber
- B. Corrupted operating system
- C. VLAN mismatch
- D. Bad port

**Answer:** B

#### NEW QUESTION 15

- (Exam Topic 1)

A network technician recently installed a new server on a network. The technician must ensure the server does not have any unnecessary services running. The IP address of the server is 204.211.38.50

Which of the following commands would allow the technician to make this determination?

- A. nmap
- B. pathping
- C. route
- D. nslookup

**Answer:** A

#### NEW QUESTION 17

- (Exam Topic 1)

Which of the following communication media can carry many voice, data, and video channels simultaneously over multiple frequencies?

- A. Broadband
- B. Baseband
- C. Analog modem
- D. CSMA

**Answer:** A

#### NEW QUESTION 21

- (Exam Topic 1)

A network technician is setting up a new router. Since it is exposed to the public, which of the following are the BEST steps the technician should take when setting up this device? (Choose two.)

- A. Disable unnecessary services.
- B. Use private IP addresses.
- C. Allow remote management access.
- D. Disable the console port.
- E. Enable encryption.
- F. Upgrade to the latest firmware.

**Answer:** AF

#### NEW QUESTION 22

- (Exam Topic 1)

A technician is assigned to secure a basic wireless network. Which of the following authentication protocol should the technician use to performed this task (select TWO).

- A. RDP
- B. SNMP
- C. WPA2
- D. EAP SSL

**Answer:** CD

#### NEW QUESTION 27

- (Exam Topic 1)

A technician is investigating the cause of a network outage. Which of the following documents should be checked to rule out configuration issues?

- A. Change management records
- B. Inventory management
- C. Network log files
- D. Logical diagrams

**Answer:** A

#### NEW QUESTION 29

- (Exam Topic 1)

A router is set up to utilize RIPv2 to route traffic throughout the network. Which of the following routing metrics is used to determine the path?

- A. Distance
- B. bandwidth
- C. Speed
- D. hop count

**Answer:** D

#### NEW QUESTION 31

- (Exam Topic 1)

Which of the following are characteristics of jumbo frames? (Choose two.)

- A. Commonly used on SAN
- B. MTU size greater than 1500
- C. MTU size greater than 10000
- D. Commonly used on IaaS
- E. MTU size greater than 12000

**Answer:** AB

**NEW QUESTION 33**

- (Exam Topic 1)

A network engineer planning for wireless connectivity in large office building. Currently, the office building contains both legacy and newer devices. Which of the following wireless network routers should engineer select for the fastest throughput for all wireless devices in the office building?

- A. 802.11ac
- B. 802.11b
- C. 802.11g
- D. 802.11n

**Answer:** A

**Explanation:**

<https://www.forbes.com/forbes/welcome/?toURL=https://www.forbes.com/sites/gordonkelly/2014/12/30/802-11>

**NEW QUESTION 38**

- (Exam Topic 1)

A network technician is repurposing a switch that has been in storage for some time. The device has been wiped to factory defaults. Which of the following should be done FIRST to ensure the device has been hardened before configuration?

- A. Generate new keys.
- B. Disable unused ports.
- C. Check for updated firmware.
- D. Configure the default VLAN.

**Answer:** C

**NEW QUESTION 40**

- (Exam Topic 1)

A company recently upgraded all of its printers to networked multifunction devices. Users can print to the new devices, but they would also like the ability to scan and fax files from their computers. Which of the following should the technician update to allow this functionality?

- A. Device software
- B. Printer drivers
- C. Printer firmware
- D. NIC drivers

**Answer:** C

**NEW QUESTION 45**

- (Exam Topic 1)

A network technician is installing a new wireless network in a small office. Due to environment concerns, The customer wants the network to run exclusively on the %GHz frequency. Which of the following wireless technologies should the technician install meet this requirement? (Select TWO).

- A. 802.11ac
- B. 802.11b
- C. 802.11g
- D. 802.11n
- E. Bluetooth
- F. z-Wave

**Answer:** AD

**NEW QUESTION 49**

- (Exam Topic 1)

Two building used to be connected by wireless bridge, but they are upgrading to fiber. Which of the following new devices would be required at the demarcation points?

- A. Wireless access point
- B. Router
- C. Media converter
- D. Firewall

**Answer:** B

**NEW QUESTION 50**

- (Exam Topic 1)

A network administrator would like to collect information from several networking devices using SNMP. Which of the following SNMP options should a network administrator use to ensure the data transferred is confidential?

- A. authpriv
- B. SHA
- C. MD5
- D. Authentication passphrase

**Answer:** A

**NEW QUESTION 54**

- (Exam Topic 1)

A disgruntled employee decides to leak critical information about a company's new product. The employee places keyloggers on the department's computers, allowing the information to be sent out to the Internet. Which of the following attacks is occurring?

- A. Man-in-the-middle
- B. Logic bomb
- C. Insider threat
- D. Social engineering

**Answer:** C

**NEW QUESTION 55**

- (Exam Topic 1)

A typical cell tower will have microwave and cellular antennas. Which of the following network topologies do these represent? (Choose two.)

- A. Point-to-multipoint
- B. Bus
- C. Point-to-point
- D. Mesh
- E. Peer-peer
- F. Ring

**Answer:** CD

**NEW QUESTION 58**

- (Exam Topic 1)

A network administrator is testing connectivity at a new corporate site. The site has a wireless guest as well as a wired employee network. After verifying connectivity, the administrator checks link speeds by using a speed testing website. The speed testing website shows lower download and upload speeds for the wired network than the wireless network. Which of the following is the MOST likely explanation?

- A. There is less local congestion on the wireless network
- B. The testing server for the wired network was farther away
- C. The firewall is configured to throttle traffic to specific websites
- D. The wireless access points were misconfigured

**Answer:** B

**NEW QUESTION 59**

- (Exam Topic 1)

A technician set up a new SOHO network recently. The installed router has four Ethernet ports; however the customer has seven devices that wired connections. Which of the following should the technician do to BEST meet the customer's requirements?

- A. Install a six-port switch
- B. Configure port forwarding on the router
- C. Install WAPs near the devices.
- D. Configure the switchports as EtherChannel ports.

**Answer:** A

**NEW QUESTION 60**

- (Exam Topic 1)

A technician is configuring a printer for a client. The which of the following types to the network, But is unsure how to determine its switch port. Which of the following should the technician do FIRST to locate switch port?

- A. perform a DNS lookup on the server.
- B. Set up a SSH session to the desktop
- C. Reference the ARP table in the router
- D. Configure port security on the switch.

**Answer:** D

**NEW QUESTION 62**

- (Exam Topic 1)

A technician is upgrading the firmware on an older KVM switch. The specifications call for a serial port to connect to the computer on one side, and an Ethernet jack to connect to the switch on the other side. Which of the following connectors does the technician need for this cable? (Choose two.)

- A. RG-9
- B. DB-9
- C. RJ-11
- D. DB-25
- E. RJ-45
- F. BNC

**Answer:** BE

**NEW QUESTION 64**

- (Exam Topic 1)

An ISP technician gets a call from a business that just changed equipment but can no longer connect to the Internet. The technician checks the ARP table on the ISP switch, and there is no corresponding MAC address present. Instead, the entry is “Incomplete”. Which of the following could cause this condition?

- A. VLAN mismatch
- B. Duplex/Speed mismatch
- C. Duplicate IP address
- D. TX/RX reverse

**Answer:** B

#### NEW QUESTION 65

- (Exam Topic 1)

A network technician has salvaged several Ethernet cables from a datacenter. The technician attempts to use the cables to connect desktops to the network without success. Which of the following is MOST likely the issue?

- A. The cables have an incorrect pin-out.
- B. The cables are UTP instead of STP.
- C. The cables are Cat 6 instead of Cat 5.
- D. The cables are not plenum rated.

**Answer:** A

#### NEW QUESTION 68

- (Exam Topic 1)

A network technician is troubleshooting wireless network issues in a crowded office complex and suspects there is interference from nearby wireless networks. Which of the following should the technician perform to discover possible interference?

- A. Site survey
- B. Vulnerability scanning
- C. Wardriving
- D. Checking logical diagram
- E. Bandwidth test

**Answer:** A

#### NEW QUESTION 69

- (Exam Topic 1)

Which of the following BEST describes the BGP routing protocol?

- A. distance vector
- B. hybrid
- C. static
- D. link state

**Answer:** B

#### NEW QUESTION 71

- (Exam Topic 1)

An assistant systems analyst reports the following findings of an investigation of slow Internet connections in a remote office to the senior systems analyst:

Device	CPU Utilization	Memory Utilization	Link Status
Router	5%	43%	Good
Firewall	92%	58%	Good
Switch 1	23%	32%	Good
Switch 2	8%	81%	Good

Which of the following devices is causing the issue?

- A. Router
- B. Firewall
- C. Switch 1
- D. Switch 2

**Answer:** B

#### NEW QUESTION 76

- (Exam Topic 1)

Under which of the following layers of the OSI do ATM cells operate?

- A. Data link
- B. Network
- C. Session
- D. Transport
- E. Presentation

**Answer:** A



**NEW QUESTION 79**

- (Exam Topic 1)

A network administrator wants to ensure sensitive data is not exfiltrated from the system electronically. Which of the following should be implemented?

- A. DLP
- B. AUP
- C. NDA
- D. SLA

**Answer:** A

**NEW QUESTION 81**

- (Exam Topic 1)

In which of the following scenarios should a technician use a cross-over cable to provide connectivity?

- A. PC to switch
- B. Switch to AP
- C. Router to switch
- D. Router to modem
- E. PC to PC

**Answer:** E

**NEW QUESTION 82**

- (Exam Topic 1)

An administrator wants to implement an additional authentication factor to the remote SSH servers. Which of the following accomplishes this goal with the principle of \*something you have\*?

- A. Certificate
- B. pattern
- C. Password
- D. Fingerprint

**Answer:** A

**NEW QUESTION 86**

- (Exam Topic 1)

A network administrator gets a call regarding intermittent network outages across the country. Which of the following should be used to connect to the network so the administrator can troubleshoot this issue from home? (Choose two.)

- A. FTP
- B. SMTP
- C. VPN
- D. SSH
- E. SNMP

**Answer:** CD

**NEW QUESTION 90**

- (Exam Topic 1)

A network technician is adding workstation to the enterprise network. After bringing the PCs online. The technician receives reports from random users that they cannot log on. The technician checks and finds everything is functioning for most users. Which of the following is MOST likely causing the problem?

- A. Exhausted DHCP scope
- B. DNS resolving
- C. Duplicate Mac address
- D. Incorrect ACL entry

**Answer:** C

**NEW QUESTION 92**

- (Exam Topic 1)

A network technician notices the site-to-site VPN and Internet connection have not come back up at a branch office after a recent power outage. Which of the following is an out-of-band method the technician would MOST likely utilize to check the branch office's router status?

- A. Use a modem to console into the router
- B. Walk a user through troubleshooting the connection
- C. Travel to the branch office
- D. Hire a contractor to go on-site

**Answer:** A

**NEW QUESTION 97**

- (Exam Topic 1)

Which of the following MUST be implemented to share metrics between routing protocols within the same router?

- A. Routing loop



- B. Routing table
- C. Route redistribution
- D. Dynamic routes

**Answer:** B

#### NEW QUESTION 98

- (Exam Topic 1)

A junior network technician receives a help desk ticket from an end user who is having trouble accessing a web application that was working the previous day. After talking with the end user and gathering information about issue, which of the following would be the most likely course of action for the technician to perform next?

- A. Establish a theory of probable cause.
- B. Escalate the ticket to a senior technician.
- C. Implement the solution.
- D. Document the findings and outcomes.

**Answer:** A

#### NEW QUESTION 101

- (Exam Topic 1)

Which of the following should be performed to verify that unnecessary services are disabled on all switches in an environment?

- A. packet capturing
- B. port scanning
- C. Log scanning
- D. Baseline review

**Answer:** B

#### NEW QUESTION 105

- (Exam Topic 1)

Which of the following security mechanisms dynamically assigns a Layer 2 address and restricts traffic only to that Layer 2 address?

- A. Sticky MAC
- B. 802.1x
- C. ACL
- D. NAC

**Answer:** A

#### NEW QUESTION 108

- (Exam Topic 1)

Which of the following devices should a network administrator configure on the outermost part of the network?

- A. Media converter
- B. Switch
- C. Modem
- D. Firewall

**Answer:** D

#### NEW QUESTION 113

- (Exam Topic 1)

Which of the following DNS records needs to be configured for SMTP traffic?

- A. MX
- B. CNAME
- C. AAAA
- D. PTR

**Answer:** A

#### NEW QUESTION 118

- (Exam Topic 1)

The Chief Information Officer (CIO) has noticed the corporate wireless signal is available in the parking lot. Management requests that the wireless network be changed so it is no longer accessible in public areas, without affecting the availability inside the building. Which of the following should be changed on the network?

- A. Power levels
- B. Overcapacity
- C. Distance limitations
- D. Channel overlap

**Answer:** A

**NEW QUESTION 121**

- (Exam Topic 1)

A contractor is setting up and configuring conference rooms for a convention. The contractor sets up each room in the conference center to allow wired Internet access going to individual tables. The contractor measured the distance between the hotel's patch panel to the jack, and the distance is within Cat 5e specifications. The contractor is concerned that the room will be out of specification if cables are run in each room from the wall jacks. Which of the following actions should the contractor take to ensure the cable runs meet specifications and the network functions properly?

- A. Place a switch at the hotel's patch panel for connecting each room's cables
- B. Place a switch on each table to ensure strong connectivity
- C. Place repeaters between the patch panel and the rooms
- D. place a switch at the wall jack and run the cables in the room from there

**Answer:** A

**NEW QUESTION 125**

- (Exam Topic 1)

Which of the following should a technician investigate when using a network baseline to troubleshoot?

- A. Tracing a network wire connectivity issue from the datacenter to a host.
- B. Determining if the server performance is degraded.
- C. Changes that have been made to the network configuration.
- D. Location of networking equipment in a rack.

**Answer:** B

**NEW QUESTION 128**

- (Exam Topic 1)

The IT manager at a small firm is in the process of renegotiating an SLA with the organization's ISP. As part of the agreement, the organization will agree to a dynamic bandwidth plan to provide 150Mbps of bandwidth.

However, if the ISP determines that a host on the organization's internal network produces malicious traffic, the ISP reserves the right to reduce available bandwidth to 1.5 Mbps. Which of the following policies is being agreed to in the SLA?

- A. Session hijacking
- B. Blocking
- C. Throttling
- D. Data usage limits
- E. Bandwidth quotas

**Answer:** C

**NEW QUESTION 131**

- (Exam Topic 1)

Ann, a new employees within a department, cannot print to any of the printers in the department or access any of the resources that other can. However, she can access the internet. The network engineer has confirmed that Ann's has been set up same as the others. There are no access lists restricting Ann's access.

Which of the following cloud be the issue for this lack of access?

- A. Duplex/speed mismatch
- B. VLAN mismatch
- C. DNS server issue
- D. DHCP server issue
- E. Spanning tree blocked ports

**Answer:** B

**NEW QUESTION 133**

- (Exam Topic 1)

A recently constructed building makes use of glass and natural light. Users in the building are reporting poor cellular connectivity and speeds. Which of the following is MOST likely the cause?

- A. Absorption
- B. Channel overlap
- C. Reflection
- D. Frequency mismatch

**Answer:** C

**NEW QUESTION 136**

- (Exam Topic 1)

In which of the following ways does a DDoS attack differ from a spoofing attack?

- A. DDoS attacks target multiple networks
- B. Spoofing attacks originate from a single host
- C. DDoS attacks are launched from multiple hosts
- D. Spoofing attacks require physical presence

**Answer:** C

**NEW QUESTION 141**

- (Exam Topic 1)

A technician is investigating a server performance issue. The technician has gathered the server utilization statistics. Which of the following should the technician use to determine which statistics are not in the normal range?

- A. Baseline review
- B. Vulnerability scan
- C. System life-cycle report
- D. Archiving logs

**Answer:** A

**NEW QUESTION 146**

- (Exam Topic 1)

A network technician notices the site-to site VPN and internet connection have back up at a branch office' after a recent power outage. Which of the following is an out-of-band method the technician the would MOST likely utilize to check the branch office's router status?

- A. Use a modem to console into router.
- B. Walk to the branch troubleshooting the connection.
- C. Travel to the branch office.
- D. Hire a contractor to go on-site.

**Answer:** B

**NEW QUESTION 150**

- (Exam Topic 1)

A network technician needs to install a new access switch. After installing the new switch, the technician beings to move connections from the old switch to the new switch. The old switch used a GBIC connectors, and the new switch uses an SEF LC with LC connectors. After connecting the SC connector to the SC-to-LC adapter abd plugging it to the switch, the link does not come up as expected. Which of the following should a network technician perform NEXT?

- A. Replace SEP with a new one.
- B. Fall back to the switch.
- C. Transpose the fiber pairs.
- D. Replace multimode with single-mode cable

**Answer:** C

**NEW QUESTION 152**

- (Exam Topic 1)

A network engineer is designing a new IDF in an old building. The engineer determines the equipment will fit in a two-post rack, and there is power available for this equipment. Which of the following would be the FIRST issue to remediate?

- A. Air flow and cooling
- B. UPS capability
- C. Circuit labeling
- D. Power redundancy

**Answer:** A

**NEW QUESTION 157**

- (Exam Topic 1)

A technician is replacing a switch at a branch office and discovers the existing backbone cable does not fit in the new switch. The fiber patch panel has circular connections. The new switch has a transceiver that accepts a smaller square adapter of two strands. Which of the following patch cables would the technician need to complete the installation?

- A. LC to SC
- B. SC to ST
- C. LC to ST
- D. ST to ST
- E. SC to SC

**Answer:** C

**NEW QUESTION 158**

- (Exam Topic 1)

A technician is replacing a failed SOHO router for a customer who has an existing, cable modem, and static IP address. The user has a web server that faces the Internet so users can visit and leave comments. Which of the following BEST describes the correct configuration for this customer's requirements?

- A. The modem is placed in bridge mode, the router is placed behind the modem, and the web server is placed behind the router.
- B. The router is place in bridge in mode, the modem is placed behind the router, and the web server ids placed behind the modem.
- C. the web server is placed in bridge mode, the router is placed behind the server, and the modem is placed behind the router.
- D. The switch is placed in bridge mode, the modem is placed behind the switch, and the router is placed behind the modem.

**Answer:** A

**NEW QUESTION 159**

- (Exam Topic 1)

Which of the following are DNS record type? (Select THREE).

- A. CNAME
- B. NTP
- C. PTR
- D. LDAP
- E. DHCP
- F. TTL
- G. SRV
- H. SSH

**Answer:** ACG

#### NEW QUESTION 164

- (Exam Topic 1)

A network technician is configuring a wireless network at a branch office. Users at this office work with large files and must be able to access their files on the server quickly. Which of the following 802.11 standards provides the MOST bandwidth?

- A. a
- B. ac
- C. g
- D. n

**Answer:** B

#### NEW QUESTION 167

- (Exam Topic 1)

A customer is reporting difficulty connecting some devices after replacing a wireless router with a new wireless 802.11ac router. The SSID, encryption and password are the same as the previous router. A technician goes on-site and notices the devices that are no longer connecting appear to be several years ago. Which of the following is MOST likely the problem?

- A. the password needs to be re-entered.
- B. there is a security type mismatch.
- C. there is insufficient antenna power.
- D. there is a frequency mismatch.
- E. the channel has changed.

**Answer:** D

#### NEW QUESTION 169

- (Exam Topic 1)

A network administrator needs to transmit traffic to geographically diverse sites to improve performance. Which of the following devices would BEST direct traffic to the remote sites?

- A. Hub
- B. Bridge
- C. Switch
- D. Router

**Answer:** D

#### NEW QUESTION 173

- (Exam Topic 1)

Multiple users are reporting that they are unable to access the network. The ENTIRE network is shown in the diagram. PCs are not statically assigned IP addresses. The following devices will display settings.

- WorkstationA
- WorkstationB
- WofkstationC
- WorkstationD
- WokstationE
- WorkstalionF
- WorkstalionG
- Laptop1
- Laptop2
- DHCP server1
- DHCP serverr2

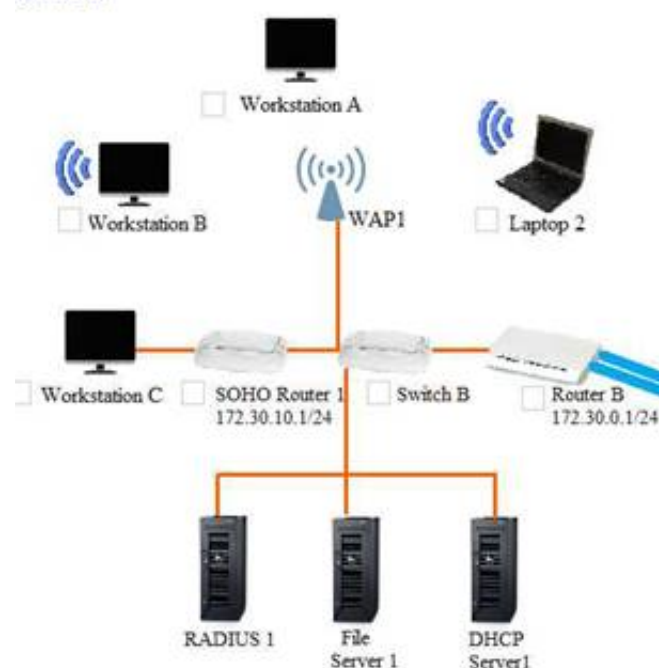
Review the settings and select the box in the diagram that identifies the device causing the issue. Only one device can be selected at a time.

After checking the device that is causing the issue, select the second tab in the lower left hand corner. Identify the reason as to why some users are unable to access the network.

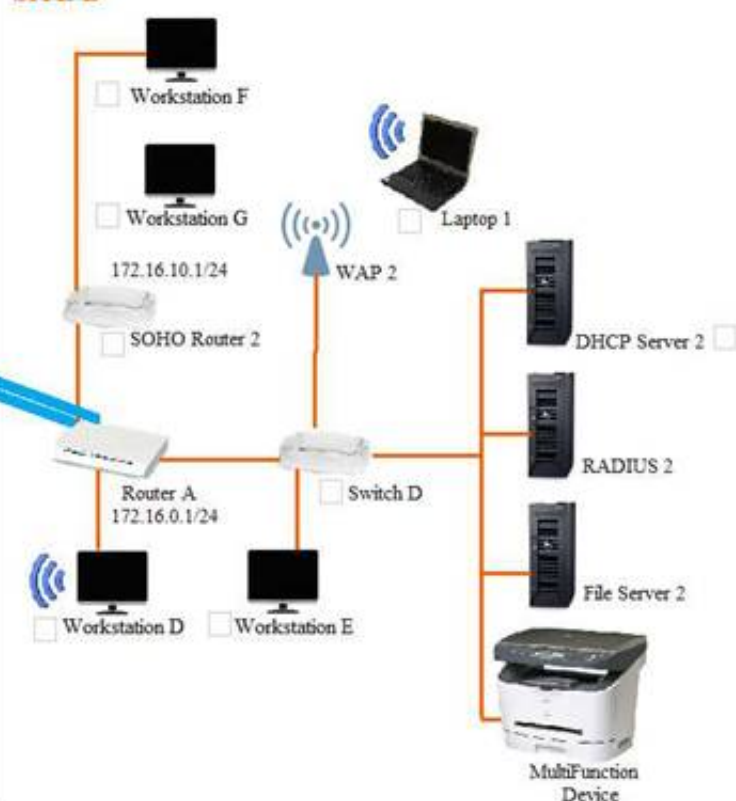
### Site A and B Network Diagram

Instructions: Only one device can be selected at a time. Please ensure you complete Part 1 and Part 2 of the simulation.

#### SITE A



#### SITE B



#### WORKSTATION A

IP Address	172.30.0.10
Netmask	255.255.255.0
Gateway	172.30.0.1

OK

#### WORKSTATION B

IP Address	172.30.0.14
Netmask	255.255.255.0
Gateway	172.30.0.1

OK

#### WORKSTATION C

IP Address	169.254.200.67
Netmask	255.255.255.0
Gateway	

OK

#### WORKSTATION D

IP Address	172.16.0.221
Netmask	255.255.255.0
Gateway	172.16.0.1

OK

#### WORKSTATION E

IP Address	172.16.0.21
Netmask	255.255.255.0
Gateway	172.16.0.1

OK

#### WORKSTATION F

IP Address	172.16.10.43
Netmask	255.255.255.0
Gateway	172.16.10.1

OK



**WORKSTATION G**

IP Address	172.16.10.120
Netmask	255.255.255.0
Gateway	172.16.10.1

**LAPTOP 1**

IP Address	172.16.0.220
Netmask	255.255.255.0
Gateway	172.16.0.1

**LAPTOP 2**

IP Address	172.30.0.12
Netmask	255.255.255.0
Gateway	172.30.0.1

**DHCP SERVER 1**

IP Address	172.30.0.5
Netmask	255.255.255.0
Gateway	172.30.0.1

DHCP Scope	172.30.0.10-250
Gateway	172.30.0.1
DNS Servers	10.200.2.20, 10.200.3.20
DHCP Lease Time	8 days

**DHCP SERVER 2**

IP Address	172.30.0.5
Netmask	255.255.255.0
Gateway	172.16.0.1

DHCP Scope	172.16.0.10-250
Gateway	172.16.0.1
DNS Servers	10.200.2.20, 10.200.3.20
DHCP Lease Time	8 days

Part 2

Identify the reason as to why some users are unable to access the network.

- A. Workstation(s) are plugged into switch ports configured with half duplex.
- B. The site-to-site router was configured with the incorrect ACL.
- C. DHCP server scope is full and is not providing IP addresses.
- D. WAN and LAN ports are reversed on the router.
- E. STP had disabled some of the ports on the switch.
- F. The NIC driver is not installed.
- G. A wireless client is unable to associate to the AP.

**Answer:** G

#### NEW QUESTION 176

- (Exam Topic 1)

A technician is connecting a PC to a switchport. At the wiring closet, the technician is identify which cable goes from patch panel a connected to the switch to patch panel B connected to the PC. Which of the following tools should the technician use to resolve the issue?

- A. Cable tester

- B. Multimeter
- C. Tone generator
- D. OTDR

**Answer:** C

#### NEW QUESTION 179

- (Exam Topic 1)

A Chief Information Officer (CIO) wants to move some IT services to a cloud service offering. However, the network administrator still wants to be able to control some parts of the cloud service's networking components. Which of the following should be leveraged to complete this task?

- A. IaaS
- B. PaaS
- C. SaaS
- D. DaaS

**Answer:** B

#### NEW QUESTION 183

- (Exam Topic 1)

A user reports difficulties connecting a PC to a wired network. The PC connects to an IP phone, which is working correctly. A network technician can verify that other devices successfully connect to the phone. At which of the following layers of the OSI model is the problem MOST likely located?

- A. Network
- B. Physical
- C. Transport
- D. Application

**Answer:** A

#### NEW QUESTION 184

- (Exam Topic 1)

Which of the following protocols can be both connection-oriented and connectionless?

- A. 20 FTP
- B. 53 DNS
- C. 67 DHCP
- D. 80 HTTP

**Answer:** B

#### NEW QUESTION 185

- (Exam Topic 1)

An end-user device requires a specific IP address every time it connects to the corporate network; however, corporate policy does not allow the use of static IP addresses. Which of the following will allow the request to be fulfilled without breaking the corporate policy?

- A. DHCP relay
- B. DHCP exclusion
- C. DHCP option
- D. DHCP reservation

**Answer:** D

#### NEW QUESTION 188

- (Exam Topic 1)

Client PCs are unable to receive addressing information from a newly configured interface on a router. Which of the following should be added to allow the clients to connect?

- A. DHCP lease me
- B. IP helper
- C. TTL
- D. DNS record type

**Answer:** B

#### NEW QUESTION 190

- (Exam Topic 1)

A technician logs onto a system using Telnet because SSH is unavailable. SSH is enabled on the target device, and access is allowed from all subnets. The technician discovers a critical step was missed. Which of the following would allow SSH to function properly?

- A. Perform file hashing
- B. Generate new keys
- C. Update firmware
- D. Change default credentials

**Answer:** B



**NEW QUESTION 191**

- (Exam Topic 1)

A network technician has created a network that consists of a router, a firewall, a switch, and several PCs. Which of the following physical network topologies was created?

- A. Star
- B. Mesh
- C. Ring
- D. Bus

**Answer:** D

**NEW QUESTION 196**

- (Exam Topic 1)

A network technician is considering opening ports on the firewall for an upcoming VoIP PBX implementation. Which of the following protocols is the technician MOST likely to consider? (Choose three.)

- A. SIP
- B. NTP
- C. H.323
- D. SMB
- E. ICMP
- F. RTP
- G. IPSec
- H. RDP

**Answer:** ACF

**NEW QUESTION 201**

- (Exam Topic 1)

Which of the following networking devices operates at Layer1?

- A. Router
- B. Firewall
- C. Hub
- D. Bridge

**Answer:** C

**NEW QUESTION 204**

- (Exam Topic 1)

Which of the following is the SHORTEST way to write 2001:0000:0d58:0000:0000:0095:7565:0001 in proper IPv6 shorthand?

- A. 2001::d58::95:7565:1
- B. 2001:0:d58:0:0:95:7565:1
- C. 2001:0:d58::95:7565:1
- D. 2001:0:0d58::95:7565:1

**Answer:** C

**NEW QUESTION 207**

- (Exam Topic 1)

A technician is connecting a router directly to a PC using the G1/0/1 interface. Without the use of auto-sensing ports, which of the following cables should be used?

- A. Straight-through
- B. Console
- C. Rollover
- D. Crossover

**Answer:** D

**NEW QUESTION 208**

- (Exam Topic 1)

A company is allowing its employees to use their personal computers, tables, and IoT devices while at work. However, there are rules and guidelines to which employees must adhere. Which of the following documents applies to these employees?

- A. NDA
- B. SOP
- C. BYOD
- D. SLA

**Answer:** C

**NEW QUESTION 213**

- (Exam Topic 1)

A network technician needs to connect to a remote router to modify the configuration, Which of the following method should the technician use to connected to the device security? (Select TWO)

- A. Telnet
- B. VNC
- C. SSH
- D. RDP
- E. HTTPS
- F. TFTP

**Answer:** BC

#### NEW QUESTION 214

- (Exam Topic 1)

A network administrator configures an email server to use secure protocols. When the upgrade is completed, which of the following ports on the firewall should be configured to allow for connectivity? (Choose three.)

- A. TCP 25
- B. TCP 110
- C. TCP 143
- D. TCP 389
- E. TCP 587
- F. TCP 993
- G. TCP 995

**Answer:** EFG

#### NEW QUESTION 219

- (Exam Topic 1)

A network technician has implemented ACLs to limit access to cloud-based file storage. Which of the following security mechanisms has the technician enforced?

- A. DLP
- B. IDS
- C. WAF
- D. WPA
- E. TPM

**Answer:** C

#### NEW QUESTION 222

- (Exam Topic 1)

The Chief Executive Officer's (CEO's) tablet cannot connect to the wireless network from the corner office. A network technician verified the tablet can connect to the wireless network in other areas of the building. The distance between the office and the 802.11ac WAP is 150ft (46m), and there are a few cubicles in between. Which of the following is the MOST likely cause of the tablet not connecting?

- A. Absorption
- B. Reflection
- C. Distance
- D. Refraction
- E. Attenuation

**Answer:** C

#### NEW QUESTION 225

- (Exam Topic 1)

A technician is planning a remote-access strategy to manage routers and switches on a dedicated management network. The management network is segregated from the production network and uses site-to-site VPN connections. Some of the equipment does not support encryption. Which of the following should the technician choose that all the equipment would support?

- A. Telnet
- B. SSL
- C. SSH
- D. IPSec

**Answer:** A

#### NEW QUESTION 227

- (Exam Topic 1)

An administrator is moving to a new office. There will be several network runs through the ceiling area of the office. Which of the following is the BEST to utilize in these areas?

- A. Single-mode fiber-optic cabling
- B. Cat 5e-rated cabling
- C. Cat 6-rated cabling
- D. Plenum-rated cabling

**Answer:** D

#### NEW QUESTION 228

- (Exam Topic 1)

According to the OSI model, at which of the following layers is data encapsulated into a packet?

- A. Layer 2
- B. Layer 3
- C. Layer 4
- D. Layer 5
- E. Layer 6

**Answer: B**

#### NEW QUESTION 233

- (Exam Topic 1)

A network technician has recently installed new VoIP phones at all employees' desks to support a new SIP cloud solution. However, the technician is unable to make a call from the device after testing. Which of the following should the technician verify?

- A. TCP 433 is allowed.
- B. UDP 1720 is allowed.
- C. UDP 50860 is allowed.
- D. UDP 5061 is allowed.
- E. TCP 8080 is allowed.
- F. TCP 8181 is allowed.

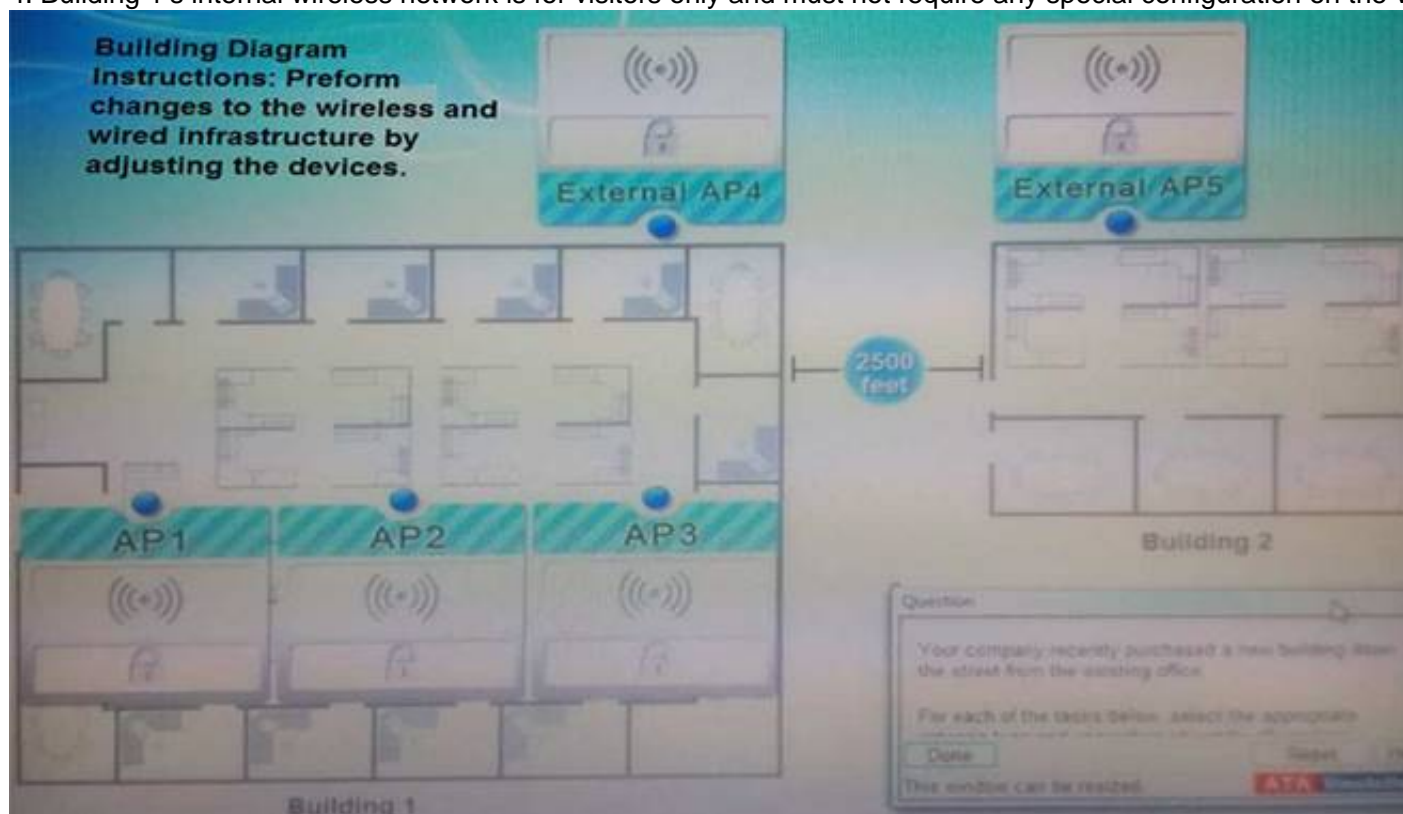
**Answer: CD**

#### NEW QUESTION 237

- (Exam Topic 1)

Your company recently purchased a new building down the street from the existing office. For each of the tasks below, select the appropriate antenna type and encryption object for all wireless access point (AP).

1. Create an encrypted wireless connection between the two buildings that BEST controls signal propagation, while maximizing security.
2. Restrict the wireless signal generated by the access points (APs) inside Building 1, so that it minimizes broadcast beyond the building.
3. Maximize wireless coverage inside Building 1.
4. Building 1's internal wireless network is for visitors only and must not require any special configuration on the visitor's device to connect.



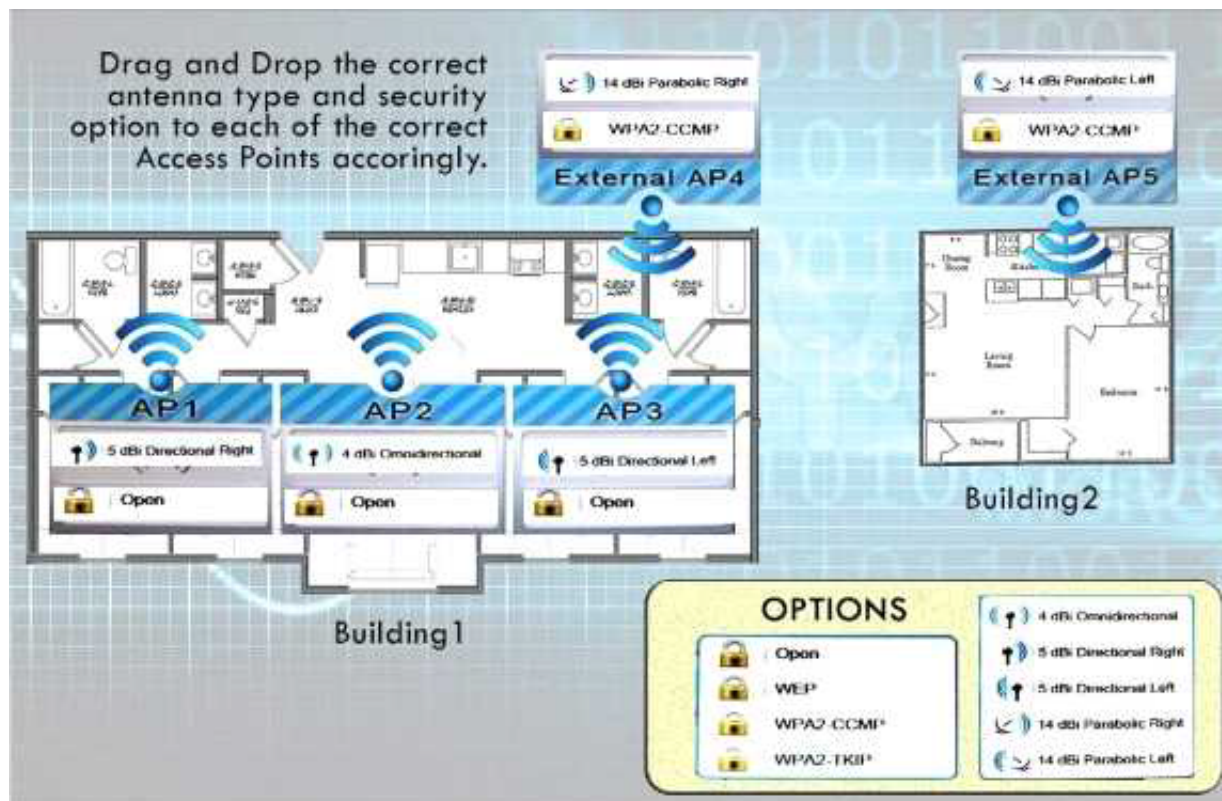
Instructions: When you have completed the simulation, select the Done button to submit.

- A. Mastered
- B. Not Mastered

**Answer: A**

#### Explanation:

Answer is as below in image.



#### NEW QUESTION 239

- (Exam Topic 1)

A second router was installed on a network to be used as a backup for the primary router that works as a gateway. The infrastructure team does not want to change the IP address of the gateway on the devices. Which of the following network components should be used in this scenario?

- A. Loopback IP
- B. Virtual IP
- C. Reserved IP
- D. Public

**Answer: B**

#### NEW QUESTION 243

- (Exam Topic 2)

Tenants access multiple wireless networks in a building. Users report intermittent connectivity. Which of the following is the MOST likely cause of the problem?

- A. The channels are overlapping with other wireless networks and should be changed.
- B. The SSIDs are incompatible and should be renamed.
- C. The users have incompatible wireless network cards and should upgrade.
- D. The default idle period for logoff is too short and should be changed to a longer limit.

**Answer: A**

#### NEW QUESTION 246

- (Exam Topic 2)

Which of the following uses port 53 by default?

- A. RDP
- B. QoS
- C. DHCP
- D. DNS

**Answer: D**

#### NEW QUESTION 247

- (Exam Topic 2)

Which of the following mediums is circuit switched?

- A. PSTN
- B. ATM
- C. Frame relay
- D. MPLS

**Answer: A**

#### NEW QUESTION 252

- (Exam Topic 2)

Which of the following cable types have a rated MAXIMUM bandwidth of 100Mbps?

- A. CAT3
- B. CAT5
- C. CAT5e
- D. CAT6

**Answer:** B

**NEW QUESTION 254**

- (Exam Topic 2)

Which of the following is true about tunneling and encryption?

- A. SIP encrypts all data going through the tunnel.
- B. PPTP creates a secure tunnel.
- C. SSL VPN provides a secure tunnel.
- D. RAS is a secure way to create a tunnel.

**Answer:** C

**NEW QUESTION 258**

- (Exam Topic 2)

A network technician is configuring a wireless network. To avoid interference from other wireless networks in the area, the technician should change which setting?

- A. Channel
- B. SSID
- C. Firewall rule
- D. Encryption

**Answer:** A

**NEW QUESTION 260**

- (Exam Topic 2)

Which of the following has a maximum transfer rate of 54Mbps and operates at the 5GHz frequency?

- A. 802.11a
- B. 802.11b
- C. 802.11g
- D. 802.11n

**Answer:** A

**NEW QUESTION 263**

- (Exam Topic 2)

Which of the following default ports would need to be open on a firewall to allow remote desktop access?

- A. 143
- B. 443
- C. 3389
- D. 8080

**Answer:** C

**NEW QUESTION 267**

- (Exam Topic 2)

attempting to access a popular website. Which of the following will MOST likely correct the error?

- A. HTTP uses UDP
- B. DNS port 23 needs to be allowed
- C. HTTP needs port 443 allowed
- D. UDP port 53 needs to be allowed

**Answer:** D

**NEW QUESTION 269**

- (Exam Topic 2)

A company has installed an access point and configured it to broadcast at 802.11n only. Some users are stating that they cannot connect to this access point.

Which of the following is the MOST likely reason some users cannot connect?

- A. Incorrect channel
- B. Weak encryption
- C. Incompatible NICs
- D. Incorrect SSID

**Answer:** C

**NEW QUESTION 271**

- (Exam Topic 2)

Use of group accounts should be minimized to ensure which of the following?

- A. Password security
- B. Regular auditing



- C. Baseline management
- D. Individual accountability

**Answer:** D

#### NEW QUESTION 272

- (Exam Topic 2)

A company wants to only allow incoming HTTP and HTTPS traffic on their public wireless network. Which of the following port numbers should be the only allowed open ports on the firewall to accomplish this? (Select TWO).

- A. 20
- B. 80
- C. 143
- D. 443
- E. 8080

**Answer:** BD

#### NEW QUESTION 274

- (Exam Topic 2)

In order to reduce spam email, Kim, a network administrator, changes the standard SMTP port from which of the following port numbers to port number 587?

- A. 20
- B. 21
- C. 23
- D. 25

**Answer:** D

#### NEW QUESTION 276

- (Exam Topic 2)

Which of the following is a purpose of a VLAN?

- A. Decreases bandwidth on a network
- B. Segments broadcast traffic
- C. Increases port speed
- D. Allows another connection to the router

**Answer:** B

#### NEW QUESTION 279

- (Exam Topic 2)

Which of the following defines an IP address that is NOT routed on the Internet?

- A. Multicast
- B. Public
- C. Private
- D. Classful

**Answer:** C

#### NEW QUESTION 281

- (Exam Topic 2)

Privilege creep among long-term employees can be mitigated by which of the following procedures?

- A. User permission reviews
- B. Mandatory vacations
- C. Separation of duties
- D. Job function rotation

**Answer:** A

#### NEW QUESTION 286

- (Exam Topic 2)

Which of the following protocols would Kurt, a technician, use to synchronize local date and time of a client workstation to that of a server?

- A. RTP
- B. NTP
- C. TFTP
- D. ARP

**Answer:** B

#### NEW QUESTION 287

- (Exam Topic 2)

Which of the following protocols are used to connect devices in a secure manner? (Select TWO).

- A. TELNET
- B. SSH
- C. RDP
- D. HTTP
- E. DNS
- F. FTP

**Answer:** BC

#### NEW QUESTION 289

- (Exam Topic 2)

An organization recently installed a firewall on the network. Employees must have access to their work computer from their home computer. In which of the following ways should the firewall be configured?

- A. Allow TCP port 3389 outbound
- B. Allow UDP port 3389 inbound
- C. Allow UDP port 3389 outbound
- D. Allow TCP port 3389 inbound

**Answer:** D

#### NEW QUESTION 290

- (Exam Topic 2)

A technician is troubleshooting a problem with a network printer. The technician thinks the network printer is out of paper and ink. Which of the following should the technician do NEXT?

- A. Implement the solution
- B. Question users
- C. Test the theory
- D. Escalate the problem

**Answer:** C

#### NEW QUESTION 293

- (Exam Topic 2)

Which of the following is characterized by an attacker attempting to map out an organization's staff hierarchy in order to send targeted emails?

- A. Whaling
- B. Impersonation
- C. Privilege escalation
- D. Spear phishing

**Answer:** A

#### NEW QUESTION 294

- (Exam Topic 2)

Which of the following defines when Pete, an attacker, attempts to monitor wireless traffic in order to perform malicious activities?

- A. XSS
- B. SQL injection
- C. Directory traversal
- D. Packet sniffing

**Answer:** D

#### NEW QUESTION 296

- (Exam Topic 2)

Which of the following routing protocols relies on hop count as its ONLY metric?

- A. BGP
- B. EIGRP
- C. OSPF
- D. RIP

**Answer:** D

#### NEW QUESTION 300

- (Exam Topic 2)

Which of the following is the network topology in which computers connect in a closed circle?

- A. Bus
- B. Mesh
- C. Ring
- D. Star



**Answer:** C

**NEW QUESTION 304**

- (Exam Topic 2)

Kim, a network technician, is installing an 802.11n network. Which of the following should Kim enable to ensure that the network only allows 802.11n clients?

- A. Name the SSID on the 802.11n network only
- B. Limit the DHCP address pool
- C. Disable 802.11b and 802.11g
- D. Only use WPA encryption

**Answer:** C

**NEW QUESTION 308**

- (Exam Topic 2)

Which of the following is indicative of an FTP bounce?

- A. Arbitrary IP address
- B. Reverse DNS lookups
- C. Same Port Number
- D. File Transfer Success

**Answer:** A

**NEW QUESTION 313**

- (Exam Topic 2)

Which of the following is the default subnet mask for a Class B address?

- A. 255.0.0.0
- B. 255.255.0.0
- C. 255.255.255.0
- D. 255.255.255.255

**Answer:** B

**NEW QUESTION 318**

- (Exam Topic 2)

An administrator is receiving reports from an executive that the executive's wireless access point loses the signal frequently, even though the WAP is on the executive's desk. The office contains four other 802.11n access points. Which of the following would MOST likely correct interference problems in the executive's office?

- A. Turn off SSID broadcasting for the executive's access point
- B. Replace the 802.11n access point in the office with an 802.11a access point.
- C. Change the channel on the access point to channel 11.
- D. Turn off as many lights in the executive's office as possible to reduce interference.

**Answer:** C

**NEW QUESTION 320**

- (Exam Topic 2)

Which of the following is the BEST way to mitigate security threats on a network?

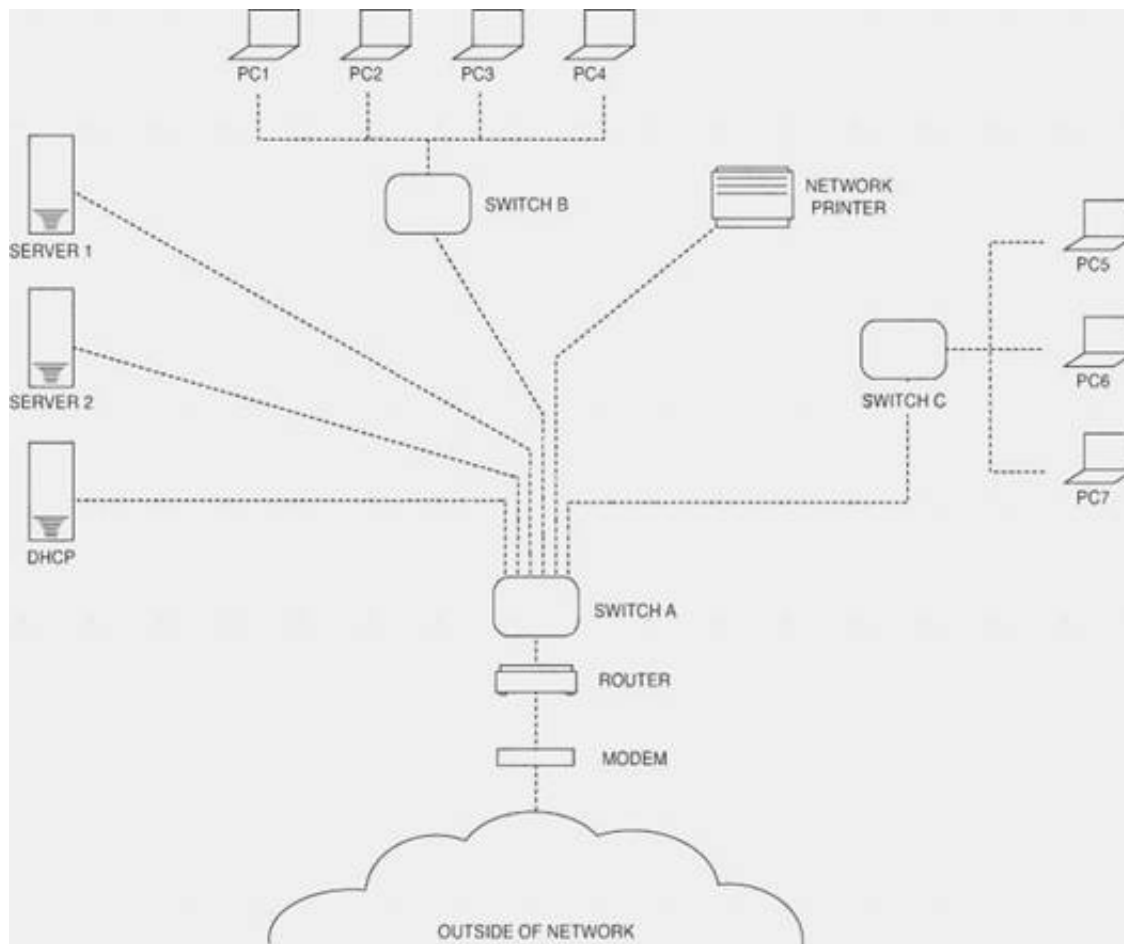
- A. Social engineering
- B. User training
- C. Incident response
- D. Man-in-the-middle

**Answer:** B

**NEW QUESTION 321**

- (Exam Topic 2)

Please refer to the attached exhibit. Which of the following types of configuration management documentation is represented?



- A. Network security policy
- B. Network baseline
- C. Logical network diagram
- D. Wiring schematic

**Answer: C**

#### NEW QUESTION 326

- (Exam Topic 2)

Which of the following is an invalid MAC address?

- A. AA:CE:58:FD:90:08
- B. 44:98:3E:F8:33:23
- C. 56:AD:BX:89:55:54
- D. 94:9E:FE:EE:8C:DF

**Answer: C**

#### NEW QUESTION 327

- (Exam Topic 2)

Which of the following network devices restricts traffic based on words, signatures, and URLs?

- A. Layer 2 switch
- B. Content filter
- C. Load balancer
- D. Traffic analyzer

**Answer: B**

#### NEW QUESTION 332

- (Exam Topic 2)

Which of the following MUST be kept synchronized in order for Kerberos to work?

- A. Certificate
- B. Ticket
- C. Time
- D. Token

**Answer: C**

#### NEW QUESTION 336

- (Exam Topic 2)

Which of the following allows a technician to gather information about the operating system?

- A. Domain services
- B. Fingerprinting
- C. Countermeasures
- D. Reconnaissance

**Answer: B**

**NEW QUESTION 340**

- (Exam Topic 2)

Which of the following WAP security features offers the STRONGEST encryption?

- A. WPA
- B. WPA2
- C. WEP
- D. Hidden SSID

**Answer:** B

**NEW QUESTION 345**

- (Exam Topic 2)

Which of the following devices exist as either hardware or software to assist in routing traffic? (Select TWO).

- A. Cable modem
- B. Layer 2 switch
- C. Router
- D. NIDS
- E. Layer 3 switch

**Answer:** CE

**NEW QUESTION 349**

- (Exam Topic 2)

Which of the following protocols would be used to send email to an email server?

- A. NTP
- B. FTP
- C. SNMP
- D. SMTP

**Answer:** D

**NEW QUESTION 354**

- (Exam Topic 2)

A new firewall was recently installed blocking SMTP traffic. As a result, no one has Internet access. Which of the following has MOST likely occurred?

- A. Port security is blocking all traffic.
- B. An IDS is blocking all traffic.
- C. Implicit deny is blocking all traffic.
- D. SMTP is blocking all traffic.

**Answer:** C

**NEW QUESTION 355**

- (Exam Topic 2)

Which of the following is based ENTIRELY on using ICMP packets?

- A. Social engineering
- B. NMAP
- C. Buffer overflow attack
- D. Smurf attack

**Answer:** D

**NEW QUESTION 357**

- (Exam Topic 2)

A username provides which of the following?

- A. Biometrics
- B. Identification
- C. Authorization
- D. Authentication

**Answer:** B

**NEW QUESTION 361**

- (Exam Topic 2)

Which of the following ports should be allowed through a firewall to allow DNS resolution to occur to an outside DNS server?

- A. 20
- B. 53
- C. 80
- D. 3389

**Answer:** B

**NEW QUESTION 363**

- (Exam Topic 2)

A small office home office (SOHO) customer is going to be replacing their switch. The customer also wants to add a WAP in a dropped ceiling; however, there are no power outlets above the drop ceiling, but there is a CAT5e network jack. Which of the following technologies should the new switch have to allow this WAP to be placed where the customer requests, without any other major changes to the environment?

- A. PoE
- B. Layer 3 switching
- C. STP
- D. VLAN

**Answer:** A

**NEW QUESTION 367**

- (Exam Topic 2)

An administrator is replacing an existing WAP because the customer is reporting that the connection speeds are too slow. Which of the following should be installed?

- A. 802.11a
- B. 802.11b
- C. 802.11g
- D. 802.11n

**Answer:** D

**NEW QUESTION 368**

- (Exam Topic 2)

A technician has replaced the Internet gateway router, and now no users can reach the Internet. The technician can ping the router Ethernet port but not the ISP's router IP address. Which of the following is the MOST likely problem?

- A. Faulty crossover cable
- B. DNS server is down
- C. Switching loop
- D. Outside interface shutdown

**Answer:** D

**NEW QUESTION 371**

- (Exam Topic 2)

Which of the following protocols uses port 3389?

- A. IMAP
- B. DHCP
- C. SSH
- D. RDP

**Answer:** D

**NEW QUESTION 372**

- (Exam Topic 2)

Which of the following commands will display the associated IP address of a network adapter in Windows and Linux environments? (Select TWO).

- A. dig
- B. nslookup
- C. nbstat
- D. ifconfig
- E. ipconfig

**Answer:** DE

**NEW QUESTION 376**

- (Exam Topic 3)

Which of the following protocols is used to securely connect to a multi-layer switch?

- A. HTTP
- B. SMTP
- C. SSH
- D. Telnet

**Answer:** C

**NEW QUESTION 379**

- (Exam Topic 3)

A new monitoring device is installed in the network that uses ping to determine whether critical network Internet routers are up. After three missing pings, the alarm reports the device is down. The device is now constantly reporting alarms, yet there are no reported Internet problems from users. Which of the following is the MOST likely cause?

- A. A missing route on the alarm device.
- B. Incorrect VLAN assignment on the router.
- C. A missing route on the network routers.
- D. Incorrect speed/duplex setting on the alarm device.

**Answer:** D

#### NEW QUESTION 380

- (Exam Topic 3)

When configuring a wireless access point, Zach, a network administrator, needs to determine the MAC address of a local printer. Which of the following commands would be MOST helpful in determining the MAC address?

- A. ping
- B. arp
- C. route
- D. dig

**Answer:** B

#### NEW QUESTION 382

- (Exam Topic 3)

Zach, a technician, suspects a duplicate IP address assignment on the network. Which of the following resources can be used to verify this problem?

- A. Network map
- B. Environmental monitor
- C. Placement map
- D. Syslog

**Answer:** D

#### NEW QUESTION 385

- (Exam Topic 3)

Which of the following is an example of two factor authentication?

- A. Password, device certificate and PIN
- B. SSL web server certificate and password
- C. User password and administrator password
- D. Password and hardware token OTP

**Answer:** D

#### NEW QUESTION 390

- (Exam Topic 3)

Lisa, a network technician, needs to introduce a few more cables to the existing patch panel. Which of the following tools would she use?

- A. OTDR
- B. Multimeter
- C. Punch down tool
- D. Temperature monitor

**Answer:** C

#### NEW QUESTION 391

- (Exam Topic 3)

An administrator has received a recommendation against deploying WEP as a wireless encryption protection scheme. Which of the following is MOST likely the reason?

- A. WEP's IV is too small.
- B. WEP uses RC4 which is easily accessible and not secure.
- C. WEP uses plain text.
- D. WEP is not well supported.

**Answer:** A

#### NEW QUESTION 395

- (Exam Topic 3)

Which of the following IP addresses would be classified as private?

- A. 10.100.200.0
- B. 169.253.10.20
- C. 172.168.5.0
- D. 200.100.25.0

**Answer:** A

**NEW QUESTION 400**

- (Exam Topic 3)

A Windows server has a problem after booting up. Kim, a technician, should immediately check the:

- A. history logs.
- B. cron logs.
- C. application logs.
- D. system logs.

**Answer:** D

**NEW QUESTION 403**

- (Exam Topic 3)

A technician notices that network access is becoming increasingly slow. All of the activity lights, on the only network layer 2 switch, are blinking at steadily increasing rates. Which of the following is the MOST likely cause of the increased traffic?

- A. STP blocking
- B. IP addresses
- C. MTU mismatch
- D. Switching loop

**Answer:** D

**NEW QUESTION 406**

- (Exam Topic 3)

Which of the following communication modes has the LOWEST overhead necessary to support streaming protocols such as RTP?

- A. Connectionless
- B. Stateful
- C. Full Duplex
- D. Quality of Service

**Answer:** A

**NEW QUESTION 408**

- (Exam Topic 3)

A company has attempted to introduce a new major network segment to allow growth in capacity. On the core switch, a GBIC was used to interconnect with a newly placed downstream distribution switch for the first time. Soon after this implementation, a network flood and an outage occurred between the core and new distribution network modules. Which of the following should the network administrator troubleshoot FIRST in order to rectify the issue?

- A. Check for switching loops between core and distribution switches.
- B. Check whether an incorrect VLAN has been assigned to the new distribution switch.
- C. Check for inconsistent or missing routes between the core and distribution switches.
- D. Check whether the GBIC was set to multi-mode instead of single-mode SFP.

**Answer:** A

**NEW QUESTION 413**

- (Exam Topic 3)

A user is getting very weak signals while trying to connect to the wireless. Which of the following should the user do to help with signal strength?

- A. Call the wireless provider and ask for a T3 circuit.
- B. Move the wireless router to a better location where line of sight is obtained.
- C. Reinstall the operating system to the PC to ensure the newest patches are installed.
- D. Install a hub to ensure there is a clear path for the cables to run.

**Answer:** B

**NEW QUESTION 415**

- (Exam Topic 3)

When configuring a WAP for a SOHO, which parameter will BEST limit access to the office area?

- A. Signal strength
- B. SSID enable
- C. Encryption
- D. Password hardening

**Answer:** A

**NEW QUESTION 416**

- (Exam Topic 3)

Zach, a network technician, is configuring several switches to be managed remotely. Which of the following must be configured to connect via SSH to each of those devices, as well as to retrieve various parameters?

- A. PoE settings and VTP configuration
- B. SNMP configuration only
- C. IP address and SNMP configuration
- D. QoS and PoE settings

**Answer:** C

#### NEW QUESTION 419

- (Exam Topic 3)

Which of the following is networking stand-alone hardware that will permit any WiFi-compliant device to connect to a network?

- A. Wireless hub
- B. Wireless firewall
- C. Wireless access point
- D. Wireless bridge

**Answer:** C

#### NEW QUESTION 424

- (Exam Topic 3)

Which of the following devices can be used to offload outbound web server SSL encryption overhead?

- A. NIPS
- B. Proxy server
- C. Content filter
- D. VPN connectator

**Answer:** B

#### NEW QUESTION 427

- (Exam Topic 3)

An 801.11g wireless access point was configured as follows:

- AP encryption forced to WPA2-AES mode only
- MAC address filtering enabled with the following MAC address in the allow list: 00-ab-29-da-c3-40 Which is true about the above configuration?

- A. Any 802.11b/g compatible client can connect to the wireless network if they support TKIP, the MAC address is 00-ab-29-da-c3-40, and the encryption key is known by the client.
- B. An 802.11a compatible client can connect to the wireless network only if its MAC address is 00- ab-29-da-c3-40 and the encryption key is known by the client.
- C. An 802.11n compatible client can connect to the wireless network only if its MAC address is 00- ab-29-da-c3-40 and the encryption key is known by the client.
- D. Any 802.11g compatible client can connect to the wireless network if the encryption key is known by the client.

**Answer:** C

#### NEW QUESTION 432

- (Exam Topic 3)

Which of the following technologies allows more than two transceivers with an access point?

- A. MIMO
- B. FIFO
- C. 802.1x
- D. WPA

**Answer:** A

#### NEW QUESTION 434

- (Exam Topic 3)

Kim, a technician, is installing a switch that does not feature auto-negotiation. Which of the following characteristics would need to be manually configured? (Select TWO).

- A. MAC addressing
- B. IP addressing
- C. Port speed
- D. IPv6 addressing
- E. Duplex

**Answer:** CE

#### NEW QUESTION 435

- (Exam Topic 3)

Which of the following could be used to estimate RTT across a router?

- A. Dig
- B. Traceroute
- C. Arp
- D. Uptime

**Answer:** B



**NEW QUESTION 439**

- (Exam Topic 3)

A new user is reporting connectivity issues. Zach, the network technician, notices that there is no link light on the user's NIC. Which of the following would be used to verify the wiring back to the patch panel?

- A. Butt set
- B. Cable certifier
- C. Toner probe
- D. Snips

**Answer:** B

**NEW QUESTION 443**

- (Exam Topic 3)

A customer wishes to network several computers throughout a large warehouse containing numerous metal shelves and concrete walls. The computers are at least 175 meters (574 feet) apart. Which of the following media types should be recommended for the customer using only a single switch?

- A. Fiber optic
- B. Wireless
- C. CAT5e
- D. CAT3

**Answer:** A

**NEW QUESTION 445**

- (Exam Topic 3)

There is suspected virus activity on the network. Which of the following would Lisa, a technician, use to study network traffic?

- A. Protocol analyzer
- B. Cable tester
- C. Cable certifier
- D. Environmental monitor

**Answer:** A

**NEW QUESTION 447**

- (Exam Topic 3)

Which of the following needs to be configured on a switch to use a packet sniffer?

- A. Port trunking
- B. Port mirroring
- C. Tagged VLAN
- D. Untagged VLAN

**Answer:** B

**NEW QUESTION 450**

- (Exam Topic 3)

A network administrator has created a virtual machine in the cloud. The technician would like to connect to the server remotely using RDP. Which of the following default ports needs to be opened?

- A. 445
- B. 3389
- C. 5004
- D. 5060

**Answer:** B

**NEW QUESTION 453**

- (Exam Topic 3)

A network technician is trying to terminate CAT5 modular jacks. Which of the following tools would be MOST appropriate for this scenario?

- A. Crimper
- B. OTDR
- C. Throughput tester
- D. Punch down tool

**Answer:** D

**NEW QUESTION 458**

- (Exam Topic 3)

Which of the following is used to create a secure connection between a client and a host?

- A. VLAN
- B. Proxy server
- C. IIS server

D. VPN

**Answer:** D

#### NEW QUESTION 463

- (Exam Topic 3)

A network technician configures a firewall to block only certain IP addresses from accessing the Internet. All users are reporting that they are unable to access the Internet.

Which of the following is the MOST likely reason?

- A. Incorrectly configured ACL
- B. Implicit allow statement
- C. SMTP requests are being denied
- D. All protocols are being allowed in

**Answer:** A

#### NEW QUESTION 466

- (Exam Topic 3)

Which of the following occurs when antenna gain is increased on an access point?

- A. Connection speeds decrease
- B. Throughput decreases
- C. Cell size increases
- D. Attenuation increases

**Answer:** C

#### NEW QUESTION 467

- (Exam Topic 3)

Jeff, a technician, is charged with setting up network monitoring for critical devices in the network. It is important the information be sent securely to the monitoring station. Which of the following protocols will support secure transmission of the data?

- A. SNMP v2
- B. VPN
- C. SYSLOG
- D. SMTP

**Answer:** A

#### NEW QUESTION 471

- (Exam Topic 3)

ADSL modem connects to the provider's network using which of the following authentication techniques?

- A. PoE
- B. MS-CHAP
- C. PPPoE
- D. EAP

**Answer:** C

#### NEW QUESTION 472

- (Exam Topic 3)

A network technician at a small office upgrades the VLAN switch. After the upgrade, a user reports being unable to access network resources. When the technician checks the switchport, the LED light is not lit. Which of the following should technician check FIRST?

- A. The device is using the correct cable type.
- B. The switchport is functioning properly.
- C. The device is connected to the switch.
- D. The switch is connected to the router.

**Answer:** C

#### NEW QUESTION 473

- (Exam Topic 3)

Which of the following devices is used to distribute network traffic equally over multiple links?

- A. Content filter
- B. DNS server
- C. Load balancer
- D. Proxy server

**Answer:** C

#### NEW QUESTION 475

.....

## Thank You for Trying Our Product

\* 100% Pass or Money Back

All our products come with a 90-day Money Back Guarantee.

\* One year free update

You can enjoy free update one year. 24x7 online support.

\* Trusted by Millions

We currently serve more than 30,000,000 customers.

\* Shop Securely

All transactions are protected by VeriSign!

**100% Pass Your N10-007 Exam with Our Prep Materials Via below:**

<https://www.certleader.com/N10-007-dumps.html>