

Exam Questions N10-007

CompTIA Network+ N10-007

<https://www.2passeasy.com/dumps/N10-007/>



NEW QUESTION 1

- (Exam Topic 1)

A network administrator has been given a network of 172.16.85.0/21 and wants to know the usable range of IP addresses on that subnet. Which of the following indicates the correct IP address range?

- A. 172.16.80.0-172.16.85.254
- B. 172.16.80.0-172.16.88.255
- C. 172.16.80.1-172.16.87.254
- D. 172.16.80.1-172.16.85.255

Answer: C

NEW QUESTION 2

- (Exam Topic 1)

A UTM is deployed on the external edge of the main corporate office. The office connects to the WAN port of the edge router. The edge router at the main office connects to the remote offices using GRE IPSec tunnels. A network administrator notices that a worm that was not detected by the UTM has spread from the remote sites into the corporate network. The UTM currently has traffic rules applied that should block the port used by the worm. Which of the following steps would MOST likely correct this issue?

- A. Move the UTM onto the LAN side of the network
- B. Enable TLS inspection on the UTM
- C. Enable stateful inspection on the UTM
- D. Configure the UTM to deny encrypted files from being transferred

Answer: C

NEW QUESTION 3

- (Exam Topic 1)

A technician is troubleshooting a workstation's network connectivity and wants to confirm which switchport corresponds to the wall jack the PC is using. Which of the following concepts would BEST jack the technician?

- A. Consistent labeling
- B. Change management
- C. Standard work instruction
- D. Inventory management
- D. Network baseline

Answer: A

NEW QUESTION 4

- (Exam Topic 1)

A network technician configures a firewall's ACL to allow outgoing traffic for several popular services such as email and web browsing. However, after the firewall's deployment, users are still unable to retrieve their emails. Which of the following would BEST resolve this issue?

- A. Allow the firewall to accept inbound traffic to ports 25, 67, 179, and 3389
- B. Allow the firewall to accept inbound traffic to ports 80, 110, 143, and 443
- C. Set the firewall to operate in transparent mode
- D. Allow the firewall to accept inbound traffic to ports 21, 53, 69, and 123

Answer: B

NEW QUESTION 5

- (Exam Topic 1)

A technician needs to set up a workstation with a private static address. Which of the following IP address would meet this requirement? (Select TWO).

- A. 65.78.90.102
- B. 127.0.0.1
- C. 169.254.90.19
- D. 172.16..1.103
- E. 172.33.47.100
- F. 192.168.1.55

Answer: DE

NEW QUESTION 6

- (Exam Topic 1)

A administrator is troubleshooting a user's intermitted wireless connectivity issue. Other users across the hallway can connect use the wireless network properly. Upon inspection of the connection details, the administrator finds the following:

SSID	Company-WiFi
Signal	5%
SNR	2

Which of the following is MOST likely the cause of the poor wireless connection?

- A. Channel overlap
- B. Overcapacity
- C. Incorrect antenna type
- D. Latency

Answer: C

NEW QUESTION 7

- (Exam Topic 1)

A technician is configuring a default route with IPv6. Which of the following is the correct setting for an IPV6 default rout?

- A. :: 1
- B. :: /0
- C. 2001: :0/64
- D. FE80 : :0/64

Answer: C

NEW QUESTION 8

- (Exam Topic 1)

A Chief Information Officer (CIO) is concentrated about an attacker gaining administrative access to the company's network devices. Which of the following is the MOST secure way to prevent this?

- A. ACL allowing only HTTP
- B. ACL allowing only Telnet
- C. Out-of-band modem
- D. Out-of-band console router

Answer: D

NEW QUESTION 9

- (Exam Topic 1)

A company has contracted with an outside vendor to perform a service that will provide hardware, software, and procedures in case of a catastrophic failure of the primary datacenter. The Chief Information Officer (CIO) is concerned because this contract does not include a long-term strategy for extended outages. Which of the following should the CIO complete?

- A. Disaster recovery plan
- B. Business continuity plan
- C. Service level agreement
- D. First responder training

Answer: B

NEW QUESTION 10

- (Exam Topic 1)

An entire enterprise cannot access a specific website. The network technician knows the website was accessible last week. The technician can also ping the website. Which of the following is the technician MOST likely to find upon investigation?

- A. The firewall is misconfigured.
- B. The network is being hit by a zero-day attack.
- C. The SSL certificate is untrusted.
- D. The SSL certificate has expired.

Answer: D

NEW QUESTION 10

- (Exam Topic 1)

A network administrator is redesigning network security after an attack. During the attack, an attacker used open cubicle location to attach devices to the network. The administrator wants to be able to monitor future attack in a safe environment and determine the method of attack. Which of the following should the administrator do to Best meet this requirement?

- A. Create a VLAN for the unused ports and create a honeypot on the VLAN.
- B. Install a BPDU guard on switchports and enable STP
- C. Create a DMZ for public server and secure a segment for the internal network
- D. Install antivirus software and set an ACL on the servers.

Answer: A

NEW QUESTION 14

- (Exam Topic 1)

Users are reporting Internet connectivity issues. The network administrator wants to determine if the issues are internal to the company network or if there is an issue with the ISP. Which of the following tools should be used to BEST determine where the outage is occurring?

- A. traceroute
- B. ping

- C. nslookup
- D. netstat

Answer: A

NEW QUESTION 16

- (Exam Topic 1)

To replace a defective UPS, the network administrator must take the switch offline. The administrator wants to be able to perform maintenance UPS in the future without affecting the availability of the attached switch. Which of the following would BEST allow this to happen?

- A. Add a redundant power supply to the switch
- B. Implement stacking on the switches in the rack
- C. Add a second UPS into the rack
- D. Install a power converter for the switch

Answer: A

NEW QUESTION 19

- (Exam Topic 1)

A technician is sent to a remote office to set up a device to connect to the internet. The company Standard document requires stateful inspection.

Which of the following should the technician install?

- A. ROUTER
- B. Multilayer switch
- C. Firewall
- D. Bridge

Answer: C

NEW QUESTION 22

- (Exam Topic 1)

A critical vulnerable is discovered on a network device. The vendor state it has already patched this vulnerable in its current release. Which of the following actions should an administrator take?

- A. Change the default password.
- B. Use a firewall in front of the device.
- C. Update the firmware.
- D. Upgrade the configuration.

Answer: B

NEW QUESTION 27

- (Exam Topic 1)

Which of the following communication media can carry many voice, data, and video channels simultaneously over multiple frequencies?

- A. Broadband
- B. Baseband
- C. Analog modem
- D. CSMA

Answer: A

NEW QUESTION 31

- (Exam Topic 1)

A network technician is setting up a new router. Since it is exposed to the public, which of the following are the BEST steps the technician should take when setting up this device? (Choose two.)

- A. Disable unnecessary services.
- B. Use private IP addresses.
- C. Allow remote management access.
- D. Disable the console port.
- E. Enable encryption.
- F. Upgrade to the latest firmware.

Answer: AF

NEW QUESTION 33

- (Exam Topic 1)

A user checks an IP address using an external website. The address is different than the one the user sees when opening a command prompt and typing in ipconfig/all. The user does not understand why the two tools show different IP addresses. This is BEST explained by the interworking of:

- A. network devices
- B. packet flow
- C. public/private networks
- D. traffic-routing protocols

Answer: C

NEW QUESTION 35

- (Exam Topic 1)

Which of the following should current network performance be compared against to determine network anomalies?

- A. Baseline
- B. Traffic analysis
- C. Packet capture
- D. Logs

Answer: A

NEW QUESTION 36

- (Exam Topic 1)

A technician is troubleshooting a point-to-point fiber-optic connection. The technician is at a remote site and has no connectivity to the main site. The technician confirms the switch and the send-and-receive light levels are within acceptable range. Both fiber SFPs are confirmed as working. Which of the following should the technician use to reveal the location of the fault?

- A. OTDR
- B. Light meter
- C. Tone generator
- D. CSU/DSU

Answer: A

NEW QUESTION 41

- (Exam Topic 1)

A technician is troubleshooting network connectivity issue with a remote host. Which of the following tools would BEST between the client and the remote host?

- A. tracert
- B. ping
- C. tcpdump
- D. pathping
- E. netstate
- F. nslookup
- G. route

Answer: EF

NEW QUESTION 44

- (Exam Topic 1)

A technician is investigating the cause of a network outage. Which of the following documents should be checked to rule out configuration issues?

- A. Change management records
- B. Inventory management
- C. Network log files
- D. Logical diagrams

Answer: A

NEW QUESTION 49

- (Exam Topic 1)

A network engineer planning for wireless connectivity in large office building. Currently, the office building contains both legacy and newer devices. Which of the following wireless network routers should engineer select for the fastest throughput for all wireless devices in the office building?

- A. 802.11ac
- B. 802.11b
- C. 802.11g
- D. 802.11n

Answer: A

Explanation:

<https://www.forbes.com/forbes/welcome/?toURL=https://www.forbes.com/sites/gordonkelly/2014/12/30/802-11>

NEW QUESTION 51

- (Exam Topic 1)

A network technician is repurposing a switch that has been in storage for some time. The device has been wiped to factory defaults. Which of the following should be done FIRST to ensure the device has been hardened before configuration?

- A. Generate new keys.
- B. Disable unused ports.
- C. Check for updated firmware.
- D. Configure the default VLAN.

Answer:

C

NEW QUESTION 54

- (Exam Topic 1)

802.11 n clients currently have no way to connect to the network. Which of the following devices should be implemented to let the clients connect?

- A. Router
- B. Range extender
- C. VoIP endpoint
- D. Access point

Answer: D

NEW QUESTION 59

- (Exam Topic 1)

A network technician downloaded new firmware for the company firewall. Which of the following should the network technician verify to ensure the downloaded file is correct and complete?

- A. File hash
- B. File date
- C. File type
- D. File size

Answer: A

NEW QUESTION 63

- (Exam Topic 1)

Which of the following provides the ability to deploy consistent access point configurations from a central location?

- A. Wireless controller
- B. AAA server
- C. WiFi-protected setup
- D. Proxy server
- E. VPN concentrator

Answer: A

NEW QUESTION 67

- (Exam Topic 1)

Management has requested that services be available within 72 hours of disaster, Budget is a major concern. A contract is signed with a company that has plenty space, and the technician will have the option of putting infrastructure equipment in place. Which of the following BEST describes this business continuity strategy?

- A. Cold site
- B. Differentiate backup
- C. Hot site
- D. Incremental backup
- E. Warm site
- F. Full backup

Answer: A

NEW QUESTION 68

- (Exam Topic 1)

Which of the following is the correct port number for NTP?

- A. 25
- B. 69
- C. 123
- D. 161

Answer: C

NEW QUESTION 71

- (Exam Topic 1)

A network administrator wishes to ensure there are no unnecessary open communication paths into a server. Using a port scanner, the administrator finds that ports are reported as closed. Which of the following BEST explains this response?

- A. The ports belong to an active system and are denying requests
- B. The ports are associated with deprecated services
- C. The ports do not belong to a live system
- D. The ports replied with a SYN/ACK response

Answer: B

NEW QUESTION 75

- (Exam Topic 1)

A network technician is installing a new wireless network in a small office. Due to environment concerns, The customer wants the network to run exclusively on the %GHz frequency. Which of the following wireless technologies should the technician install meet this requirement? (Select TWO).

- A. 802.11ac
- B. 802 11b
- C. 802 11g
- D. 802.11n
- E. Bluetooth
- F. z-Ware

Answer: AD

NEW QUESTION 80

- (Exam Topic 1)

A network technician is implementing a solution on the network to hide the workstation internal IP addresses across a WAN. Which of the following is the technician configuring?

- A. QoS
- B. DMZ
- C. RIP
- D. NAT

Answer: D

NEW QUESTION 81

- (Exam Topic 1)

A technician is allocating the IP address space needed for a remote office. This office will contain the engineering staff with six employees and the digital marketing staff with 55 employees. The technician has decided to allocate the 192.1.0/24 block to the remote office. The engineering staff has been allocated the 192.168./29 subnet. Using the LEAST amount of space possible, which of the following would be the last usable IP address in the engineering subnet?

- A. 192.168.1.62
- B. 192.168.1.63
- C. 192.168.1.70
- D. 192.168.1.71

Answer: A

NEW QUESTION 83

- (Exam Topic 1)

Which of the following storage network technologies inherently leverages block-level storage?

- A. NAS
- B. SAN
- C. FCoE
- D. iSCSI
- E. FTP

Answer: A

NEW QUESTION 85

- (Exam Topic 1)

Two building used to be connected by wireless bridge, but they are upgrading to fiber. Which of the following new devices would be required at the demarcation points?

- A. Wireless access point
- B. Router
- C. Media converter
- D. Firewall

Answer: B

NEW QUESTION 86

- (Exam Topic 1)

A disgruntled employee decides to leak critical information about a company's new product. The employee places keyloggers on the department's computers, allowing the information to be sent out to the Internet. Which of the following attacks is occurring?

- A. Man-in-the-middle
- B. Logic bomb
- C. Insider threat
- D. Social engineering

Answer: C

NEW QUESTION 88

- (Exam Topic 1)

A network technician is creating a new subnet for 488 host machines. The technician is told to use a class B address scheme when making the subnet and is instructed to leave as much room as possible for additional subnets of the same size. Which of the following subnets would fulfill these requirements?

- A. 10.5.4.0/22
- B. 10.233.2.0/23
- C. 172.16.0.0/22
- D. 172.18.0.0/23
- E. 192.168.25.0/24

Answer: D

NEW QUESTION 89

- (Exam Topic 1)

A typical cell tower will have microwave and cellular antennas. Which of the following network topologies do these represent? (Choose two.)

- A. Point-to-multipoint
- B. Bus
- C. Point-to-point
- D. Mesh
- E. Peer-peer
- F. Ring

Answer: CD

NEW QUESTION 94

- (Exam Topic 1)

A network administrator frequently needs to assist users with troubleshooting network hardware remotely, but the users are non-technical and unfamiliar with network devices. Which of the following would BEST help the administrator and users during hands-on troubleshooting?

- A. Logical diagrams
- B. MDF documentation
- C. Equipment labeling
- D. Standard operating procedures

Answer: D

NEW QUESTION 99

- (Exam Topic 1)

A network technician is connecting two switches together. Which of the following protocols should the technician use to increase speed and fault tolerance?

- A. SIP
- B. BGP
- C. LACP
- D. LLDP

Answer: C

NEW QUESTION 102

- (Exam Topic 1)

A network technician receives a call from a user who is experiencing network connectivity issues. The network technician questions the user and learns the user brought in a personal wired router to use multiple computers and connect to the network. Which of the following has the user MOST likely introduced to the network?

- A. Rogue DHCP server
- B. Evil twin
- C. VLAN mismatch
- D. Honeytrap

Answer: A

NEW QUESTION 105

- (Exam Topic 1)

At which of the following OSI model layers would a router operate?

- A. Physical
- B. Network
- C. Transport
- D. Data link

Answer: B

NEW QUESTION 110

- (Exam Topic 1)

A network technician is installing a new network switch and is looking for an appropriate fiber optic patch cable. The fiber optic patch panel uses a twist-style connector. The switch uses a SFP module. Which of the following connector types should the fiber patch cable have?

- A. LC
- B. ST
- C. SC
- D. MTRJ

E. MTP

Answer: B

NEW QUESTION 113

- (Exam Topic 1)

A technician is performing a maintenance task on a weekly basis and wants to ensure the task is properly documented and able to be performed by other technician. Which of the following types of documentation should the technician complete?

- A. Standard operating procedure
- B. Work order
- C. Performance baseline
- D. Logical diagram
- E. Change management

Answer: A

NEW QUESTION 116

- (Exam Topic 1)

A technician is observing brownout issue at a smaller office. At least once a week, the edge switch power cycles. Which of thy following should the technician do to resolve the issue?

- A. Install a new switch.
- B. Install a UPS.
- C. Replace the switch uplink cable.
- D. Install a new electrical circuit.

Answer: B

NEW QUESTION 121

- (Exam Topic 1)

A technician is configuring a printer for a client. The which of the following types to the network, But is unsure how to determine its switch port. Which of the following should the technician do FIRST to locate switch port?

- A. perform a DNS lookup on the server.
- B. Set up a SSH session to the desktop
- C. Reference the ARP table in the router
- D. Configure port security on the switch.

Answer: D

NEW QUESTION 124

- (Exam Topic 1)

A technician is upgrading the firmware on an older KVM switch. The specifications call for a serial port to connect to the computer on one side, and an Ethernet jack to connect to the switch on the other side. Which of the following connectors does the technician need for this cable? (Choose two.)

- A. RG-9
- B. DB-9
- C. RJ-11
- D. DB-25
- E. RJ-45
- F. BNC

Answer: BE

NEW QUESTION 127

- (Exam Topic 1)

A network technician has discovered a rogue access point under an empty cubicle desk. Which of the following should the technician perform to ensure another cannot be placed on the network?

- A. Disable unused ports on switches
- B. Enable DHCP guard to detect rogue servers
- C. Configure WPA2 on all access points
- D. Use TACACS+ authentication

Answer: B

NEW QUESTION 131

- (Exam Topic 1)

A network technician is working on a new switch implementation to expand the network. Which of the following is the BEST option to ensure the implementation goes according to business requirements?

- A. AUP
- B. NDA
- C. SOP
- D. SLA

Answer: C

NEW QUESTION 133

- (Exam Topic 1)

A network technician has salvaged several Ethernet cables from a datacenter. The technician attempts to use the cables to connect desktops to the network without success. Which of the following is MOST likely the issue?

- A. The cables have an incorrect pin-out.
- B. The cables are UTP instead of STP.
- C. The cables are Cat 6 instead of Cat 5.
- D. The cables are not plenum rated.

Answer: A

NEW QUESTION 138

- (Exam Topic 1)

A network technician is working on a proposal for email migration from an on-premises email system to a vendor-hosted email in the cloud. The technician needs to explain to management what type of cloud model will be utilized with the cloud-hosted email. Which of the following cloud models should the technician identify in the proposal?

- A. IaaS
- B. PaaS
- C. SaaS
- D. MaaS

Answer: C

NEW QUESTION 142

- (Exam Topic 1)

A network technician is troubleshooting wireless network issues in a crowded office complex and suspects there is interference from nearby wireless networks. Which of the following should the technician perform to discover possible interference?

- A. Site survey
- B. Vulnerability scanning
- C. Wardriving
- D. Checking logical diagram
- E. Bandwidth test

Answer: A

NEW QUESTION 146

- (Exam Topic 1)

A network technician wants to remotely and securely access the desktop of a Linux workstation. The desktop is running remote control software without encryption. Which of the following should the technician use to secure the connection?

- A. SSH in tunnel mode
- B. RDP set to console connection
- C. EAP-PEAP
- D. SFTP

Answer: A

NEW QUESTION 150

- (Exam Topic 1)

A technician is utilizing SNMPv3 to monitor network statistics. Which of the following actions would occur immediately of a server's utilization spikes above the prescribed value?

- A. A trap message is sent via UDP to the monitoring workstation.
- B. The SET function pushes an alert to the MIB database.
- C. The object identifier is modified and reported during the next monitoring cycle.
- D. A response message is sent from the agent to the manager.

Answer: A

NEW QUESTION 155

- (Exam Topic 1)

Which of the following are characteristic of jumbo frames? (Select TWO).

- A. Commonly used on SAN
- B. MTU size greater than 1500
- C. MTU size greater than 10000
- D. Commonly used on IaaS
- E. MTU size greater than 12000

Answer: BD

NEW QUESTION 158

- (Exam Topic 1)

An assistant systems analyst reports the following findings of an investigation of slow Internet connections in a remote office to the senior systems analyst:

Device	CPU Utilization	Memory Utilization	Link Status
Router	5%	43%	Good
Firewall	92%	58%	Good
Switch 1	23%	32%	Good
Switch 2	8%	81%	Good

Which of the following devices is causing the issue?

- A. Router
- B. Firewall
- C. Switch 1
- D. Switch 2

Answer: B

NEW QUESTION 162

- (Exam Topic 1)

A network technician is attempting to troubleshoot a connectivity issue. The issue is only reported during the evening hours, and only a single workstation loses connectivity. Which of the following is the MOST likely cause of the issue?

- A. The router has time-based ACL applied for the network segment.
- B. A light source is creating EMI interface, affecting the UTP.
- C. Nightly backups are consuming excessive bandwidth.
- D. The user has violated the AUP, and Internet access has been restricted

Answer: D

NEW QUESTION 165

- (Exam Topic 1)

Which of the following can be done to implement network device hardening (Select TWO).

- A. Implement spanning tree
- B. Perform VLAN hopping
- C. Patch and update
- D. Perform backups
- E. Enable port mirroring
- F. Change default admin password

Answer: CF

Explanation:

Network devices come with default credentials, the username and password that enables you to log into the device for configuration. Changing default credentials should be the first step in hardening a new device. As with any other system, avoiding common passwords adds security.

Keep network devices up to date. That means upgrading firmware, patching and updating as necessary to close any security gaps exposed over time.

Services on network devices like routers include common things, like Telnet and HTTP access; and also things you don't normally see, like TCP and UDP small services, debugging and testing tools that primarily use ports 20 and lower. If enabled, these services can be used to launch DoS and other attacks. All modern Cisco devices have these disabled; Cisco's hardening rules insist on disabling unnecessary services.

Using secure protocols hardens network devices. Don't use Telnet to access a managed switch or router, for example, but use SSH so that the communication is encrypted.

Disabling unused ports on network devices enhances port security for access control. This includes standard IP ports and device ports, both physical and virtual for the latter.

NEW QUESTION 168

- (Exam Topic 1)

When enabling jumbo frames on a network device, which of the following parameters is being adjusted?

- A. Speed
- B. Duplex
- C. MTU
- D. TTL

Answer: C

NEW QUESTION 171

- (Exam Topic 1)

A technician needs to order cable that meets 10GBaseT and safety requirements for an installation between a drop ceiling and a standard ceiling.

Which of the following should the technician order to ensure compliance with the requirements?

- A. PVC Cat 5
- B. Plenum Cat 5e
- C. Plenum Cat 6a
- D. PVC Cat 7

Answer: C

Explanation:

10GBaseT A 10 GbE standard designed to run on Cat 6a UTP cabling. Maximum cable length of 100 m.

NEW QUESTION 175

- (Exam Topic 1)

A technician has installed a Linux server in the tax office. The server can access most of the resources on the network, but it cannot connect to another server that has a share for backup. The technician learns that the target server is on a different subnet. Which of the following tools should the technician use to ensure the Linux server can reach the backup location?

- A. netstat
- B. traceroute
- C. route
- D. dig
- E. ifconfig

Answer: B

NEW QUESTION 178

- (Exam Topic 1)

A technician is setting up a wireless access point in a coffee shop. The shop is not concerned with security but only wants to allow customers to have access. Which of the following configurations should the technician deploy?

- A. Use a pre-shared key.
- B. Set up EAP.
- C. Configure RADIUS.
- D. Configure MAC filtering.

Answer: A

NEW QUESTION 182

- (Exam Topic 1)

Which of the following protocols authenticates a PC to the server using a ticket issued to it by the authentication service?

- A. Kerberos
- B. RADIUS
- C. TACACS+
- D. LDAP

Answer: A

NEW QUESTION 184

- (Exam Topic 1)

A network technician is adding workstation to the enterprise network. After bringing the PCs online. The technician receives reports from random users that they cannot log on. The technician checks and finds everything is functioning for most users. Which of the following is MOST likely causing the problem?

- A. Exhausted DHCP scope
- B. DNS resolving
- C. Duplicate Mac address
- D. Incorrect ACL entry

Answer: C

NEW QUESTION 188

- (Exam Topic 1)

A technician is responsible for configuring a new firewall. The hardware team has already installed, powered, and connected the system. Which of the following types of documentation should the technician utilize to complete the task?

- A. Rack diagram
- B. IDF/MDF documentation
- C. Network performance baseline
- D. Logical and physical diagrams

Answer: D

NEW QUESTION 191

- (Exam Topic 1)

A company finds that many desktops are being reported as missing or lost. Which of the following would BEST assist in recovering these devices?

- A. Asset tracking tags
- B. Motion detectors
- C. Security guards
- D. Computer locks

Answer: D

NEW QUESTION 196

- (Exam Topic 1)

A junior technician is setting up a voice control device so the Chief Executive Officer (CEO) will be able to control various things in the office. Of which of the following types of local technologies is this an example?

- A. LAN
- B. WAN
- C. SAN
- D. PAN

Answer: D

NEW QUESTION 201

- (Exam Topic 1)

The security manager reports that individual systems involved in policy or security violations or incidents cannot be located quickly. The security manager notices the hostnames all appear to be randomly generated characters. Which of the following would BEST assist the security manager in identifying systems involved in security incidents?

- A. Enforce port security to require system authentication
- B. Implement a standardized UNC
- C. Label existing systems with current hostnames
- D. Forward the DHCP logs to the security manager every day

Answer: B

NEW QUESTION 206

- (Exam Topic 1)

A network technician is diagnosing a time-out issue generated from an end user's web browser. The web browser issues standard HTTP GET and POST commands to interact with the website. Given this information, the technician would like to analyze the entire TCP handshake of the HTTP requests offline. Which of the following tools would allow the technician to view the handshake?

- A. Packet analyzer
- B. Port analyzer
- C. SNMP traps
- D. Spectrum analyzer

Answer: A

NEW QUESTION 207

- (Exam Topic 1)

Which of the following ports should a network technician open on a firewall to back up the configuration and operating system files of a router to a remote server using the TFTP method possible?

- A. UDP port 22
- B. TCP port 22
- C. TCP port 25
- D. UDP port 53
- E. UDP port 69

Answer: E

NEW QUESTION 211

- (Exam Topic 1)

Which of the following security mechanisms dynamically assigns a Layer 2 address and restricts traffic only to that Layer 2 address?

- A. Sticky MAC
- B. 802.1x
- C. ACL
- D. NAC

Answer: A

NEW QUESTION 214

- (Exam Topic 1)

A network engineer arrives at work and discovers that many users are having problems when attempting to connect to the company network shared drives. The network operations center (NOC) technician just completed server upgrades the night before. To which of the following documents should the NOC technician refer to determine what potentially caused the connectivity problem?

- A. Network maps
- B. Cable management
- C. Release notes
- D. Change management

Answer: D

NEW QUESTION 219

- (Exam Topic 1)

A technician is configuring a printer for a client. The technician connects the printer to the network, but is unsure how to determine its switchport. Which of the

following should the technician do FIRST to locate the switchport?

- A. Perform a DNS lookup on the server.
- B. Set up an SSH session to the desktop.
- C. Reference the ARP table in the router.
- D. Configure port security on the switch.

Answer: C

NEW QUESTION 224

- (Exam Topic 1)

The Chief Information Officer (CIO) has noticed the corporate wireless signal is available in the parking lot. Management requests that the wireless network be changed so it is no longer accessible in public areas, without affecting the availability inside the building. Which of the following should be changed on the network?

- A. Power levels
- B. Overcapacity
- C. Distance limitations
- D. Channel overlap

Answer: A

NEW QUESTION 229

- (Exam Topic 1)

A contractor is setting up and configuring conference rooms for a convention. The contractor sets up each room in the conference center to allow wired Internet access going to individual tables. The contractor measured the distance between the hotel's patch panel to the jack, and the distance is within Cat 5e specifications. The contractor is concerned that the room will be out of specification if cables are run in each room from the wall jacks. Which of the following actions should the contractor take to ensure the cable runs meet specifications and the network functions properly?

- A. Place a switch at the hotel's patch panel for connecting each room's cables
- B. Place a switch on each table to ensure strong connectivity
- C. Place repeaters between the patch panel and the rooms
- D. place a switch at the wall jack and run the cables in the room from there

Answer: A

NEW QUESTION 230

- (Exam Topic 1)

Which of the following should a technician investigate when using a network baseline to troubleshoot?

- A. Tracing a network wire connectivity issue from the datacenter to a host.
- B. Determining if the server performance is degraded.
- C. Changes that have been made to the network configuration.
- D. Location of networking equipment in a rack.

Answer: B

NEW QUESTION 231

- (Exam Topic 1)

Ann, a new employees within a department, cannot print to any of the printers in the department or access any of the resources that other can. However, she can access the internet. The network engineer has confirmed that Ann's has been set up same as the others. There are no access lists restricting Ann's access. Which of the following could be the issue for this lack of access?

- A. Duplex/speed mismatch
- B. VLAN mismatch
- C. DNS server issue
- D. DHCP server issue
- E. Spanning tree blocked ports

Answer: B

NEW QUESTION 234

- (Exam Topic 1)

Which of the following WAN technologies utilizes the concept of virtual circuits and point-multipoint connections?

- A. ISDN
- B. MPLS
- C. PRI
- D. Broadband cable
- E. Frame relay

Answer: E

NEW QUESTION 238

- (Exam Topic 1)

An employee wishes to use a personal cell phone for work-related purposes, including storage of sensitive company data, during long business trips. Which of the

following is needed to protect BOTH the employee and the company?

- A. An NDA ensuring work data stored on the personal phone remains confidential
- B. An AUP covering how a personal phone may be used for work matters
- C. A consent to monitoring policy covering company audits of the personal phone
- D. Real-time remote monitoring of the phone's activity and usage

Answer: D

NEW QUESTION 239

- (Exam Topic 1)

Which of the following provides two factor authentication?

- A. Username+ password
- B. Smartcard +PIN
- C. Fingerprint +retina scan
- D. Key fob +ID card

Answer: B

NEW QUESTION 240

- (Exam Topic 1)

A network security technician observes multiple attempts to scan network hosts and devices. All the attempts originate from a single host on the network. Which of the following threats is MOST likely involved?

- A. Smurf attack
- B. Rogue AP
- C. Compromised system
- D. Unintentional DoS

Answer: C

NEW QUESTION 242

- (Exam Topic 1)

Ann, a network technician, has just installed a fiber switch in a datacenter. To run the fiber cabling, Ann plans the cable route over the top of the rack using the cable trays, down to the switch, coiling up any excess cable. As Ann configures the switch, she notices several messages in the logging buffer stating the receive signal of the SFP is too weak. Which of the following is MOST likely the cause of the errors in the logging buffer?

- A. Bend radius exceeded
- B. Fiber cable mismatch
- C. Fiber type mismatch
- D. Bad fiber switch

Answer: A

NEW QUESTION 247

- (Exam Topic 1)

Which of the following is a reason why a business may be hesitant to move sensitive data to a SaaS cloud service?

- A. Decreased performance of internal network
- B. Loss of full control over data resources
- C. Increased malware exposure
- D. Incompatibility with the current network

Answer: B

NEW QUESTION 248

- (Exam Topic 1)

An office user cannot access local network drives but has full access to the Internet. A technician troubleshoots the issue and observes the following output of the ipconfig command:

```
Windows IP Configuration

Ethernet LAN Adapter: 980GTS
Connection-specific DNS Suffix: ...comptia.net
IPv4 Address: .....10.0.5.99
Subnet Mask: .....255.255.255.0
Default Gateway: ...10.0.5.1

Wireless LAN Adapter: FastWifi 99
Connection-specific DNS Suffix: ...guestwireless.local
IPv4 Address: .....172.16.0.5
Subnet Mask: .....255.255.255.0
Default Gateway: ...172.16.0.254
```

Which of the following would MOST likely allow the network drives to be accessed?

- A. Update the WLAN adapter driver

- B. Disable the WLAN adapter
- C. Check the wireless DHCP configuration
- D. Disable the LAN adapter

Answer: B

NEW QUESTION 252

- (Exam Topic 1)

Which of the following BEST describes the differences between VLAN hopping and session hijacking?

- A. VLAN hopping involves the unauthorized transition from one VLAN to another to gain additional acces
- B. Session hijacking involves overriding a user's web connection to execute commands
- C. VLAN hopping is a brute force attack executed to gain additional acces
- D. Session hijacking involves physically disrupting a network connection
- E. VLAN hopping involves overriding a user network connection to execute malicious command
- F. Session hijacking involves compromising a host to elevate privileges
- G. VLAN hopping is the act of exploiting poor VLAN taggin
- H. Session hijacking is a web-based attack aimed at privilege escalation

Answer: A

NEW QUESTION 253

- (Exam Topic 1)

A network administrator wants to employ a username and password authentication system for guest WiFi. Which of the following is the BEST option to provide this type of authentication?

- A. port security
- B. MAC filtering
- C. Network access control
- D. Captive portal

Answer: D

NEW QUESTION 256

- (Exam Topic 1)

Which of the following protocols do MOST MITM attacks utilize?

- A. ARP
- B. SIP
- C. FTP
- D. SCP

Answer: A

NEW QUESTION 257

- (Exam Topic 1)

A technician is downloading an ISO from a vendor's website. To ensure the integrity of the download, which of the following should be verified?

- A. File size
- B. Vendor URL
- C. File hashing
- D. Encryption

Answer: C

NEW QUESTION 262

- (Exam Topic 1)

A small town is attempting to attract tourists who visit larger nearby cities. A network engineer is asked to implement a network encompassing the five-block town center and nearby businesses. The inclusion of smartphones and portable devices is crucial to the plan. Which of the following is the network engineer being asked to implement?

- A. LAN
- B. PAN
- C. MAN
- D. WAN

Answer: C

NEW QUESTION 263

- (Exam Topic 1)

A network technician is able to connect the switches between to offices, but the offices cannot communicate with each other, as each office uses a different IP addressing scheme. Which of the following devices needs to be installed between the switches to allow communication?

- A. Bridge
- B. Access point
- C. Router
- D. Range extender

Answer: C

NEW QUESTION 264

- (Exam Topic 1)

A technician is investigating a server performance issue. The technician has gathered the server utilization statistics. Which of the following should the technician use to determine which statistics are not in the normal range?

- A. Baseline review
- B. Vulnerability scan
- C. System life-cycle report
- D. Archiving logs

Answer: A

NEW QUESTION 268

- (Exam Topic 1)

Which of the following protocols is associated with a three-way handshake?

- A. UDP
- B. ICMP
- C. GRE
- D. TCP

Answer: D

NEW QUESTION 273

- (Exam Topic 1)

A technician is replacing a switch at a branch office and discovers the existing backbone cable does not fit in the new switch. The fiber patch panel has circular connections. The new switch has a transceiver that accepts a smaller square adapter of two strands. Which of the following patch cables would the technician need to complete the installation?

- A. LC to SC
- B. SC to ST
- C. LC to ST
- D. ST to ST
- E. SC to SC

Answer: C

NEW QUESTION 277

- (Exam Topic 1)

As part of a transition from a static to a dynamic routing protocol on an organization's internal network, the routing protocol must support IPv4 and VLSM. Based on those requirements, which of the following should the network administrator use? (Choose two.)

- A. OSPF
- B. IS-IS
- C. RIPv1
- D. BGP
- E. VRRP

Answer: AB

NEW QUESTION 282

- (Exam Topic 1)

A technician is replacing a failed SOHO router for a customer who has an existing, cable modem, and static IP address. The user has a web server that faces the Internet so users can visit and leave comments. Which of the following BEST describes the correct configuration for this customer's requirements?

- A. The modem is placed in bridge mode, the router is placed behind the modem, and the web server is placed behind the router.
- B. The router is place in bridge in mode, the modem is placed behind the router, and the web server ids placed behind the modem.
- C. the web server is placed in bridge mode, the router is placed behind the server, and the modem is placed behind the router.
- D. The switch is placed in bridge mode, the modem is placed behind the switch, and the router is placed behind the modem.

Answer: A

NEW QUESTION 284

- (Exam Topic 1)

Which of the following VPN protocols establishes a secure session that can be initiated using a browser?

- A. IPSec
- B. SSL VPN
- C. PTP
- D. PPTP

Answer: B

NEW QUESTION 289

- (Exam Topic 1)

Users are reporting issues with slow connection speeds and a loss of connectivity on the newly installed wireless network. The issues are intermittent but seem to occur most often around midday. Which of the following is the MOST likely cause?

- A. There is interference from small appliances
- B. The signal coverage area is too small
- C. Not enough DHCP addresses have been allotted
- D. The DNS cache on the users' computers has become corrupt

Answer: C

NEW QUESTION 294

- (Exam Topic 1)

A telecommunications provider has just deployed a new OC-12 circuit at a customer site. While the circuit showed no errors from the provider end to the customer's demarcation point, a network administrator is trying to determine the cause of dropped packets and errors on the circuit. Which of the following should the network administrator do to rule out any problems at Layer 1? (Choose two.)

- A. Use a loopback at the demark and router, and check for a link light
- B. Use an OTDR to validate the cable integrity
- C. Use a pinout tester to validate the cable integrity
- D. Use a multimeter to validate the cable integrity
- E. Check for any devices that may be causing EMI on the cable
- F. Clean the cables to be sure they are free of dust and debris

Answer: AB

NEW QUESTION 297

- (Exam Topic 1)

A building is equipped with light sensors that turn off the fluorescent lights when natural light is above a certain brightness. Users report experiencing network connection issues only during certain hours. The west side of the building experiences connectivity issues in the morning hours and the east side near the end of the day. At night the connectivity issues affect the entire building. Which of the following could be the cause of the connectivity issues?

- A. Light sensors are interfering with the network
- B. EMI from the lights is interfering with the network cables
- C. Network wiring is run perpendicular to electrical conduit
- D. Temperature changes are causing attenuation in copper cabling

Answer: C

NEW QUESTION 300

- (Exam Topic 1)

A network administrator needs to transmit traffic to geographically diverse sites to improve performance. Which of the following devices would BEST direct traffic to the remote sites?

- A. Hub
- B. Bridge
- C. Switch
- D. Router

Answer: D

NEW QUESTION 304

- (Exam Topic 1)

A Chief Information Officer (CIO) wants to move some IT services to a cloud service offering. However, the network administrator still wants to be able to control some parts of the cloud service's networking components. Which of the following should be leveraged to complete this task?

- A. IaaS
- B. PaaS
- C. SaaS
- D. DaaS

Answer: B

NEW QUESTION 308

- (Exam Topic 1)

Which of the following WAN technologies provides a guaranteed throughput rate?

- A. DSL
- B. T-1
- C. Cable broadband
- D. Dial-up

Answer: B

NEW QUESTION 310

- (Exam Topic 1)

A network technician has just configured NAC for connections using Cat 6 cables. However, none of the Windows clients can connect to the network.

Which of the following components should the technician check on the Windows workstations? (Choose two.)

- A. Start the Wired AutoConfig service in the Services console
- B. Enable IEEE 802.1q Authentication in Network Interface Card Properties
- C. Enable IEEE 802.1x Authentication in Network Interface Card Properties
- D. Start the Wireless AutoConfig service in the Services console
- E. Enable IEEE 802.3 Ethernet IPv6 in Network Interface Card Properties

Answer: AC

NEW QUESTION 311

- (Exam Topic 1)

A technician is trying to configure a previously owned WAP. The technician successfully logs into the administrative console and attempts to input the IP address on the WAP. However, the WAP is not accepting the command. Which of the following is causing the problem?

- A. The WAP antenna is damaged
- B. The WAP transmitter light is dim
- C. The terminal emulation software is misconfigured
- D. The LWAPP image is installed on the WAP

Answer: C

NEW QUESTION 316

- (Exam Topic 1)

A chief information Officer (CIO) tasks the network engineer with protecting the network from outside attacks. Placing which of the following devices on the network perimeter would provide the MOST security for the system?

- A. Firewall
- B. NGFW
- C. Content filter
- D. IDS/PS

Answer: B

NEW QUESTION 317

- (Exam Topic 1)

An end-user device requires a specific IP address every time it connects to the corporate network; however, corporate policy does not allow the use of static IP addresses. Which of the following will allow the request to be fulfilled without breaking the corporate policy?

- A. DHCP relay
- B. DHCP exclusion
- C. DHCP option
- D. DHCP reservation

Answer: D

NEW QUESTION 322

- (Exam Topic 1)

Which of the following is networking stand-alone hardware that will permit any WIFI-compliant to connect to a wired network?

- A. Wireless hub
- B. Wireless firewall
- C. Wireless access point
- D. Wireless bridge

Answer: C

NEW QUESTION 323

- (Exam Topic 1)

A technician replaces a failed router with a spare that has been in inventory for some time. After attempting to enable HTTPS on the spare router, the technician discovers the feature is unavailable. The support office was able to connect to the previous router. Which of the following actions should the technician perform to enable HTTPS access for the support team?

- A. Reboot the router
- B. Enable HTTP on the router
- C. Update the firmware of the spare router
- D. Perform a factory reset on the router

Answer: C

NEW QUESTION 327

- (Exam Topic 1)

A technician has been alerted of incoming HTTP traffic on the LAN segment that should not contain any web server's The technician has the IP address of the destination host and wants to determine if the socket for HTTP is open. Which of the following should the technician perform?

- A. Baseline assessment
- B. packet analysis

- C. portscan
- D. Patch-level assessment.

Answer: C

NEW QUESTION 330

- (Exam Topic 1)

A network technician has created a network that consists of a router, a firewall, a switch, and several PCs. Which of the following physical network topologies was created?

- A. Star
- B. Mesh
- C. Ring
- D. Bus

Answer: D

NEW QUESTION 335

- (Exam Topic 1)

A network administrator is performing a major to the upgrade to the network. Which of the following should the administrator use in a case of a failure?

- A. Baseline report
- B. Vulnerability report
- C. Rollback plan
- D. Business continuity plan

Answer: A

NEW QUESTION 340

- (Exam Topic 1)

A network technician is considering opening ports on the firewall for an upcoming VoIP PBX implementation. Which of the following protocols is the technician MOST likely to consider? (Choose three.)

- A. SIP
- B. NTP
- C. H.323
- D. SMB
- E. ICMP
- F. RTP
- G. IPSec
- H. RDP

Answer: ACF

NEW QUESTION 344

- (Exam Topic 1)

A network technician is troubleshooting an end-user connectivity problem. The network technician goes to the appropriate IDF but is unable to identify the appropriate cable due to poor labeling. Which of the following should the network technician use to help identify the appropriate cable?

- A. Tone generator
- B. Multimeter
- C. OTDR
- D. Loopback adapter

Answer: A

NEW QUESTION 348

- (Exam Topic 1)

An engineer is reviewing the implementation requirements for an upcoming project. The basic requirements identified by the customer include the following:

- ▶ WLAN architecture supporting speeds in excess of 150 Mbps
- ▶ Clientless remote network access
- ▶ Port-based network access control

Which of the following solution sets properly addresses all of the identified requirements?

- A. 802.11a, IPSec VPN, 802.1x
- B. 802.11ac, MPLS, 802.3
- C. 802.11b, PPTP, 802.1x
- D. 802.11g, MS-CHAP, 802.16
- E. 802.11n, SSL-VPN, 802.1x

Answer: E

NEW QUESTION 349

- (Exam Topic 1)

A network engineer is designing a new network for a remote site. The remote site consists of ten desktop computers, ten VoIP phones, and two network printers. In addition, two of the desktop computers at the remote site will be used by managers who should be on a separate network from the other eight computers. Which

of the following represents the BEST configuration for the remote site?

- A. One router connected to one 24-port switch configured with three VLANs: one for the manager's computers and printer, one for the other computers and printer, and one for the VoIP phones
- B. Two routers with each router connected to a 12-port switch, with a firewall connected to the switch connected to the manager's desktop computers, VoIP phones, and printer
- C. One router connected to one 12-port switch configured for the manager's computers, phones, and printer, and one 12-port switch configured for the other computers, VoIP phones, and printer
- D. One router connected to one 24-port switch configured with two VLANs: one for the manager's computers, VoIP phones, and printer, and one for the other computers, VoIP phones, and printer

Answer: A

NEW QUESTION 352

- (Exam Topic 1)

A company is allowing its employees to use their personal computers, tables, and IoT devices while at work. However, there are rules and guidelines to which employees must adhere. Which of the following documents applies to these employees?

- A. NDA
- B. SOP
- C. BYOD
- D. SLA

Answer: C

NEW QUESTION 355

- (Exam Topic 1)

Which of the following devices, if implemented, would result in decreased administration time of an 802.11 network running centralized authentication services? (Choose two.)

- A. VPN concentrator
- B. Proxy server
- C. Wireless controller
- D. RADIUS server
- E. Multilayer switch

Answer: CD

NEW QUESTION 357

- (Exam Topic 1)

A network technician needs to connect to a remote router to modify the configuration, Which of the following method should the technician use to connected to the device security? (Select TWO)

- A. Telnet
- B. VNC
- C. SSH
- D. RDP
- E. HTTPS
- F. TFTP

Answer: BC

NEW QUESTION 359

- (Exam Topic 1)

Users are reporting their network is extremely slow. The technician discovers pings to external host have excessive response times. However, internal pings to printers and other PCs have acceptable response times. Which of the following steps should the technician take NEXT?

- A. Determine if any network equipment was replaced recently
- B. Verify malware has not disabled the users' PC firewalls
- C. Replace users' network cables with known-good network cables
- D. Power cycle the web server

Answer: A

NEW QUESTION 362

- (Exam Topic 1)

Which of the following WAN technologies is MOST preferred when developing a VoIP system with 23 concurrent channels?

- A. DSL
- B. POTS
- C. T1
- D. DOCSIS

Answer: C

NEW QUESTION 364

- (Exam Topic 1)

A network technician needs to separate a web server listening on port 80 from the internal LAN and secure the server from the public Internet. The web server should be accessible to the public Internet over port 80 but not the private LAN. Currently, the network is segmented with a network-based firewall using the following IP addressing scheme on each interface:

Zone	Interface	IP Address
Public	eth0	10.0.0.1/24
DMZ	eth1	10.0.1.1/24
Private	eth2	10.0.2.1/24

Which of the following ones should the technician use to place the web server and which of the following firewall rules should the technician configure?

- A. Place the web server in the public zone with an inbound rule from eth0 interface to accept traffic over port 80 designated to the web server
- B. Place the web server in the DMZ with an inbound rule from eth0 interface to eth1 to accept traffic over port 80 designated to the web server
- C. Place the web server in the private zone with an inbound rule from eth2 interface to eth1 to accept traffic over port 80 designated to the web server
- D. Place the web server in the DMZ with an inbound rule from eth1 interface to eth0 to accept traffic over port 80 designated to the web server

Answer: B

NEW QUESTION 366

- (Exam Topic 1)

A technician is planning a remote-access strategy to manage routers and switches on a dedicated management network. The management network is segregated from the production network and uses site-to-site VPN connections. Some of the equipment does not support encryption. Which of the following should the technician choose that all the equipment would support?

- A. Telnet
- B. SSL
- C. SSH
- D. IPSec

Answer: A

NEW QUESTION 368

- (Exam Topic 1)

A network administrator has had difficulty keeping track of IP address assignments on networking devices and clients recently. Which of the following is the BEST technology to aid in this scenario?

- A. DNS
- B. DHCP
- C. IPAM
- D. NTP

Answer: C

NEW QUESTION 372

- (Exam Topic 1)

According to the OSI model, at which of the following layers is data encapsulated into a packet?

- A. Layer 2
- B. Layer 3
- C. Layer 4
- D. Layer 5
- E. Layer 6

Answer: B

NEW QUESTION 377

- (Exam Topic 1)

Which of the following physical security controls is MOST likely to be susceptible to a false positive?

- A. Identification card
- B. Biometric device
- C. Proximity reader
- D. Video camera

Answer: C

NEW QUESTION 378

- (Exam Topic 1)

A network technician has recently installed new VoiP phones at all employees' desks to support a new SIP cloud solution. However, the technician is unable to make a call from the device after testing. Which of the following should the technician verify?

- A. TCP 433 is allowed.
- B. UDP 1720 is allowed.
- C. UDP 50860 is allowed.
- D. UDP 5061 is allowed.

- E. TCP 8080 is allowed.
- F. TCP 8181 is allowed.

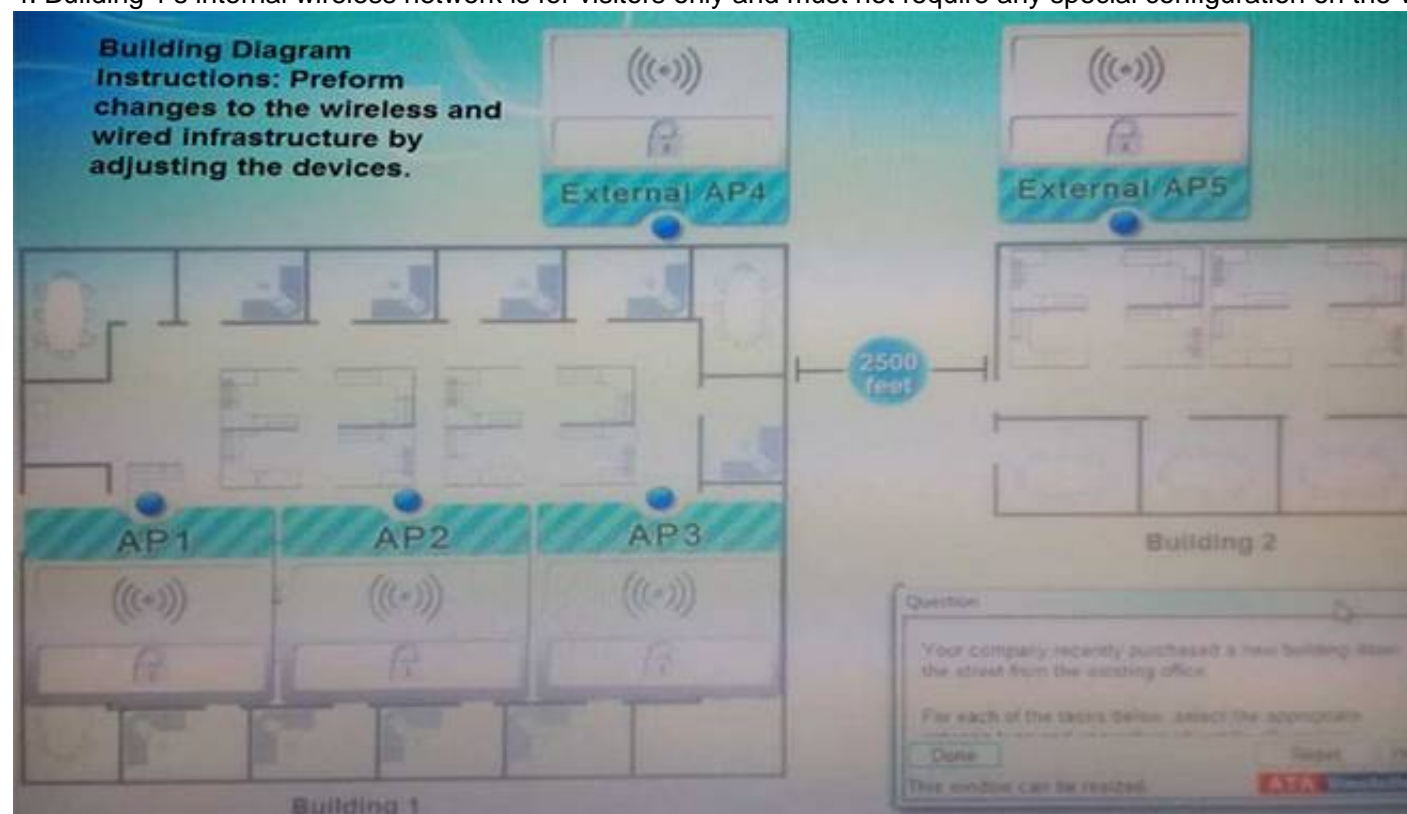
Answer: CD

NEW QUESTION 380

- (Exam Topic 1)

Your company recently purchased a new building down the street from the existing office. For each of the tasks below, select the appropriate antenna type and encryption object for all wireless access point (AP).

1. Create an encrypted wireless connection between the two buildings that BEST controls signal propagation, while maximizing security.
2. Restrict the wireless signal generated by the access points (APs) inside Building 1, so that it minimizes broadcast beyond the building.
3. Maximize wireless coverage inside Building 1.
4. Building 1's internal wireless network is for visitors only and must not require any special configuration on the visitor's device to connect.



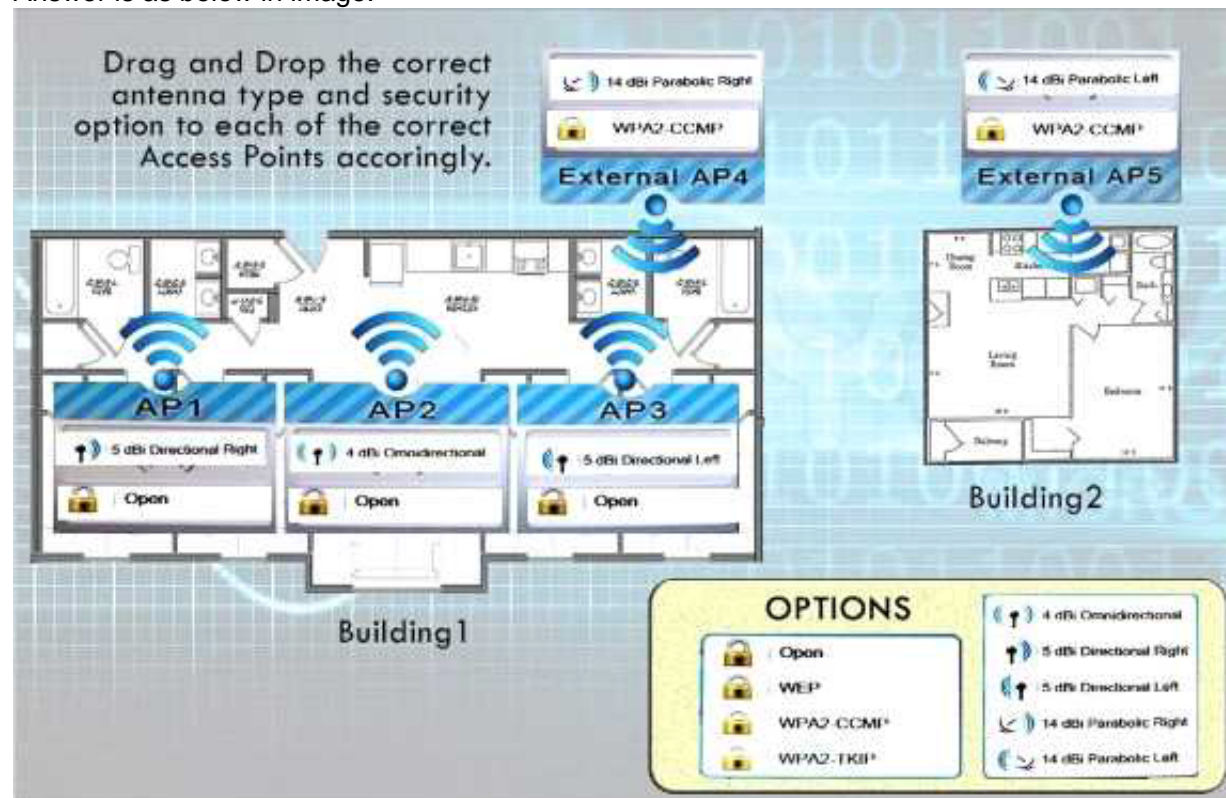
Instructions: When you have completed the simulation, select the Done button to submit.

- A. Mastered
- B. Not Mastered

Answer: A

Explanation:

Answer is as below in image.



NEW QUESTION 385

- (Exam Topic 1)

Which of the following will listen on the line to ensure there is no traffic transmitting and implement a back-off timer if a collision occurs?

- A. CSMA/CD
- B. CSMA/CA
- C. MPLS
- D. OSPF

Answer: A

NEW QUESTION 387

- (Exam Topic 1)

A single PRI can deliver multiple voice calls simultaneously using which of the following Layer 1 technologies?

- A. Time division multiplexing
- B. Analog circuit switching
- C. CSMA/CD
- D. Time division spread spectrum

Answer: A

NEW QUESTION 390

- (Exam Topic 1)

A network technician receives a spool of Cat 6a cable and is asked to build several cables for a new set of Ethernet runs between devices. Which of the following tools are MOST likely needed to complete the task? (Choose three.)

- A. Wire stripper
- B. Cable crimper
- C. RJ-11 connectors
- D. RJ-45 connectors
- E. Multimeter
- F. Punchdown tool
- G. Tone generator

Answer: ABD

NEW QUESTION 391

- (Exam Topic 2)

Which of the following default ports would need to be disabled to block TFTP traffic?

- A. 20
- B. 21
- C. 69
- D. 123

Answer: C

NEW QUESTION 393

- (Exam Topic 2)

The software that allows a machine to run multiple operating systems at once is called the:

- A. Server manager
- B. Hypervisor
- C. Boot loader
- D. Partition manager

Answer: B

NEW QUESTION 394

- (Exam Topic 2)

Which of the following uses types and codes rather than ports?

- A. EIGRP
- B. ICMP
- C. UDP
- D. IPv6

Answer: B

NEW QUESTION 396

- (Exam Topic 2)

Jeff, an administrator, has just finished installing a new switch and connected two servers with IPs of 192.168.105.20 and .30. The servers are able to communicate with each other, but are unable to reach the Internet. Jeff sees the following information in the switch configuration:

interface VLAN 105

IP address 192.168.105.5 255.255.255.0

Jeff is able to ping the router at 192.168.105.1 from the switch. Which of the following is the MOST likely cause of the problem?

- A. The subnet mask is incorrect.
- B. A routing loop has occurred.
- C. Jeff used a crossover cable to connect the switch to the gateway.
- D. The server is missing default-gateway information.

Answer: D

NEW QUESTION 400

- (Exam Topic 2)

Which of the following mediums is circuit switched?

- A. PSTN
- B. ATM
- C. Frame relay
- D. MPLS

Answer: A

NEW QUESTION 405

- (Exam Topic 2)

A network technician is configuring a wireless network. To avoid interference from other wireless networks in the area, the technician should change which setting?

- A. Channel
- B. SSID
- C. Firewall rule
- D. Encryption

Answer: A

NEW QUESTION 408

- (Exam Topic 2)

Which of the following default ports would need to be open on a firewall to allow remote desktop access?

- A. 143
- B. 443
- C. 3389
- D. 8080

Answer: C

NEW QUESTION 412

- (Exam Topic 2)

attempting to access a popular website. Which of the following will MOST likely correct the error?

- A. HTTP uses UDP
- B. DNS port 23 needs to be allowed
- C. HTTP needs port 443 allowed
- D. UDP port 53 needs to be allowed

Answer: D

NEW QUESTION 413

- (Exam Topic 2)

A company has installed an access point and configured it to broadcast at 802.11n only. Some users are stating that they cannot connect to this access point.

Which of the following is the MOST likely reason some users cannot connect?

- A. Incorrect channel
- B. Weak encryption
- C. Incompatible NICs
- D. Incorrect SSID

Answer: C

NEW QUESTION 417

- (Exam Topic 2)

Which of the following provides the use of a secure tunnel for telecommuting without manually installing and configuring encryption software?

- A. RDP
- B. SSL VPN
- C. ISAKMP
- D. TLS 2.0

Answer: B

NEW QUESTION 419

- (Exam Topic 2)

Which of the following are network topologies? (Select TWO).

- A. Ethernet
- B. Duplex
- C. Star
- D. Circular
- E. Bus

Answer: CE

NEW QUESTION 423

- (Exam Topic 2)

Which of the following cables will MOST likely be used to connect to a satellite dish?

- A. RG-6
- B. CAT5e
- C. Fiber
- D. CAT6

Answer: A

NEW QUESTION 425

- (Exam Topic 2)

Which of the following provides the MOST protection against zero day attacks via email attachments?

- A. Anti-spam
- B. Anti-virus
- C. Host-based firewalls
- D. Patch management

Answer: A

NEW QUESTION 429

- (Exam Topic 2)

Which of the following BEST describes how a layer 2 switch functions?

- A. Switches packets within the same subnet based on MAC addresses
- B. Switches packets between different subnets based on IP addresses
- C. Switches packets between different subnets based on MAC addresses
- D. Switches packets between different subnets based on MAC addresses

Answer: A

NEW QUESTION 433

- (Exam Topic 2)

Which of the following ports would have to be allowed through a firewall to allow SNMP traffic to pass on its default port? (Select TWO).

- A. 22
- B. 23
- C. 143
- D. 161
- E. 162
- F. 8080

Answer: DE

NEW QUESTION 437

- (Exam Topic 2)

A computer on VLAN 10 with the IP address of 192.168.1.45/27 cannot ping a computer on VLAN 20 with the IP address of 192.168.1.65/27. Which configuration change will allow the PING to be successful?

- A. Replace the router with a Layer 2 switch that supports VLANs
- B. Change VLAN 20 computers Default Gateway to 192.168.1.127/27
- C. Change VLAN 10 computers Default Gateway to 192.168.1.32/27
- D. Allow ICMP to pass through the Router

Answer: D

NEW QUESTION 438

- (Exam Topic 2)

Kurt, a network technician, has configured a new firewall on the network. Users are reporting errors when attempting to access several websites. Kurt attempts to access several popular websites with no errors, however, he does receive an error when attempting to access a bank website. Which of the following rules would BEST allow access to the bank website?

- A. Allow UDP port 53
- B. Allow TCP port 80
- C. Allow UDP port 340
- D. Allow TCP port 443

Answer: D

NEW QUESTION 440

- (Exam Topic 2)

Which of the following defines an IP address that is NOT routed on the Internet?

- A. Multicast
- B. Public

- C. Private
- D. Classful

Answer: C

NEW QUESTION 443

- (Exam Topic 2)

Which of the following protocols are used to connect devices in a secure manner? (Select TWO).

- A. TELNET
- B. SSH
- C. RDP
- D. HTTP
- E. DNS
- F. FTP

Answer: BC

NEW QUESTION 447

- (Exam Topic 2)

An organization recently installed a firewall on the network. Employees must have access to their work computer from their home computer. In which of the following ways should the firewall be configured?

- A. Allow TCP port 3389 outbound
- B. Allow UDP port 3389 inbound
- C. Allow UDP port 3389 outbound
- D. Allow TCP port 3389 inbound

Answer: D

NEW QUESTION 448

- (Exam Topic 2)

A technician is troubleshooting a problem with a network printer. The technician thinks the network printer is out of paper and ink. Which of the following should the technician do NEXT?

- A. Implement the solution
- B. Question users
- C. Test the theory
- D. Escalate the problem

Answer: C

NEW QUESTION 451

- (Exam Topic 2)

Which of the following is characterized by an attacker attempting to map out an organization's staff hierarchy in order to send targeted emails?

- A. Whaling
- B. Impersonation
- C. Privilege escalation
- D. Spear phishing

Answer: A

NEW QUESTION 454

- (Exam Topic 2)

A company would like all HTTP traffic to filter through a proxy server on port 8080. Which of the following port numbers needs to be redirected through the proxy server to accomplish this?

- A. 20
- B. 80
- C. 143
- D. 443

Answer: B

NEW QUESTION 457

- (Exam Topic 2)

Which of the following defines when Pete, an attacker, attempts to monitor wireless traffic in order to perform malicious activities?

- A. XSS
- B. SQL injection
- C. Directory traversal
- D. Packet sniffing

Answer: D

NEW QUESTION 462

- (Exam Topic 2)

Which of the following routing protocols relies on hop count as its ONLY metric?

- A. BGP
- B. EIGRP
- C. OSPF
- D. RIP

Answer: D

NEW QUESTION 467

- (Exam Topic 2)

Jeff, a technician, has been asked to add a subnet to the company's LAN. Which of the following interfaces on the router will be modified?

- A. FastEthernet 0/0
- B. AUX 0
- C. Console 0
- D. Serial 0/0/0

Answer: A

NEW QUESTION 469

- (Exam Topic 2)

Which of the following wireless standards is capable of ONLY operating on 5.8GHz?

- A. 802.11a
- B. 802.11b
- C. 802.11g
- D. 802.11n

Answer: A

NEW QUESTION 472

- (Exam Topic 2)

Which of the following is the network topology in which computers connect in a closed circle?

- A. Bus
- B. Mesh
- C. Ring
- D. Star

Answer: C

NEW QUESTION 475

- (Exam Topic 2)

Which of the following cables is MOST likely to be terminated into a patch panel?

- A. Serial
- B. RG-6
- C. RG-59
- D. CAT6

Answer: D

NEW QUESTION 476

- (Exam Topic 2)

A user is unable to open up websites on the Internet from a browser. The administrator determines that the workstation can ping its local gateway, but not the remote web server. At which of the following layers of the OSI model does the problem MOST likely exist?

- A. Data link
- B. Network
- C. Session
- D. Physical

Answer: B

NEW QUESTION 481

- (Exam Topic 2)

An organization has installed a new firewall. Users need to have access to remote websites and must be able to use SSH to retrieve files from remote locations. Which of the following actions should be taken on the new firewall? (Select TWO).

- A. Allow UDP port 21 outbound
- B. Allow UDP port 22 outbound
- C. Allow UDP port 80 outbound
- D. Allow TCP port 21 outbound
- E. Allow TCP port 22 outbound

F. Allow TCP port 80 outbound

Answer: EF

NEW QUESTION 484

- (Exam Topic 2)

Which of the following is indicative of an FTP bounce?

- A. Arbitrary IP address
- B. Reverse DNS lookups
- C. Same Port Number
- D. File Transfer Success

Answer: A

NEW QUESTION 488

- (Exam Topic 2)

Which of the following is the default subnet mask for a Class B address?

- A. 255.0.0.0
- B. 255.255.0.0
- C. 255.255.255.0
- D. 255.255.255.255

Answer: B

NEW QUESTION 491

- (Exam Topic 2)

Which of the following access controls enforces permissions based on data labeling at specific levels?

- A. Mandatory access control
- B. Separation of duties access control
- C. Discretionary access control
- D. Role based access control

Answer: A

NEW QUESTION 495

- (Exam Topic 2)

A technician discovers that a malware infection has damaged part of the Windows TCP/IP stack. Which of the following commands can help repair the damage?

- A. netsh lan
- B. netsh interface
- C. netsh wlan
- D. netsh winsock

Answer: D

NEW QUESTION 500

- (Exam Topic 2)

A pest control contractor attempts to gain access to the datacenter; however, the manager on duty notes that a pest control inspection was not on the schedule.

Which of the following attacks is in progress?

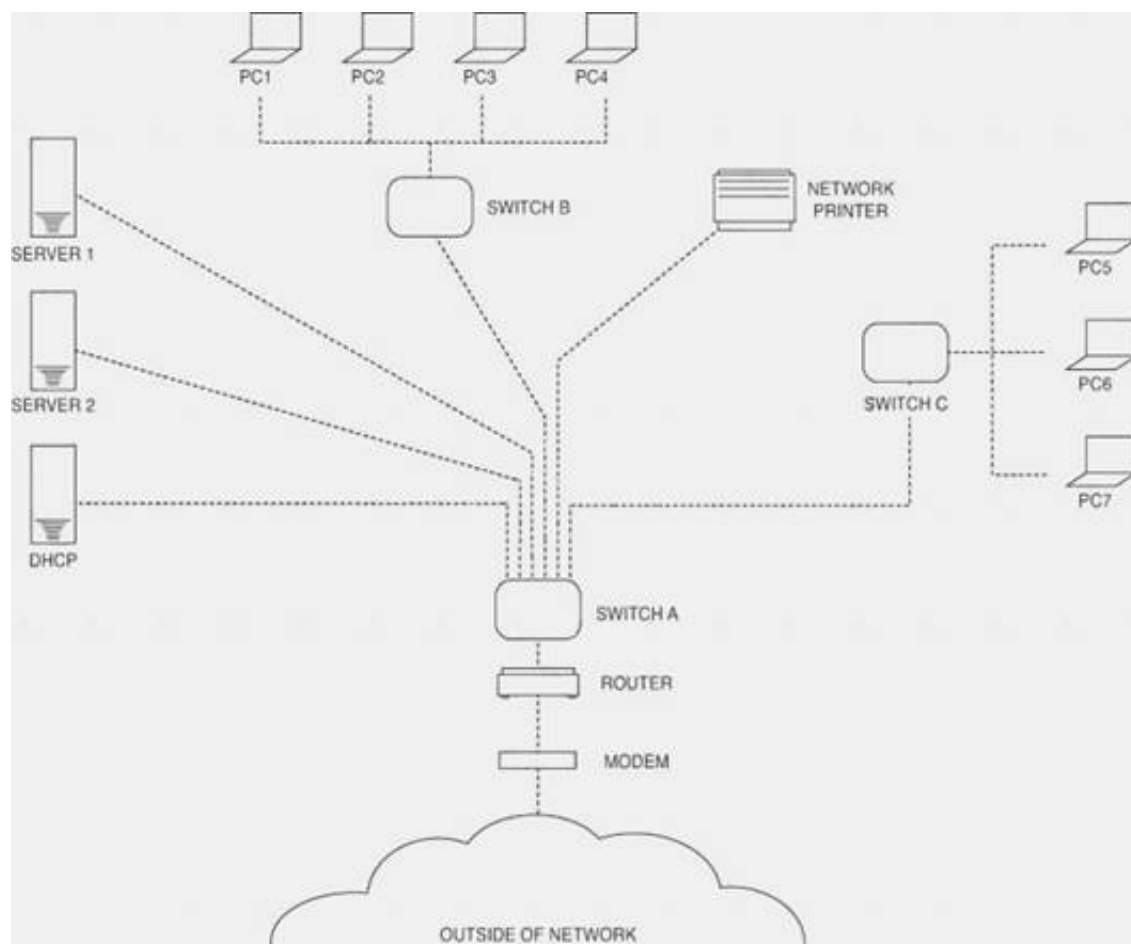
- A. Phishing
- B. Social engineering
- C. Man-in-the-middle
- D. Smurfing

Answer: B

NEW QUESTION 502

- (Exam Topic 2)

Please refer to the attached exhibit. Which of the following types of configuration management documentation is represented?



- A. Network security policy
- B. Network baseline
- C. Logical network diagram
- D. Wiring schematic

Answer: C

NEW QUESTION 507

- (Exam Topic 2)

Which of the following default services uses TCP/UDP port 88?

- A. LDAP
- B. IGMP
- C. HTTP
- D. Kerberos

Answer: D

NEW QUESTION 511

- (Exam Topic 2)

Which of the following standards can operate at both the 2.4GHz and 5GHz frequencies?

- A. 802.11a
- B. 802.11b
- C. 802.11g
- D. 802.11n

Answer: D

NEW QUESTION 514

- (Exam Topic 2)

Which of the following subnet masks would allow for 192.168.0.3 and 192.168.0.240 to be in the same subnet?

- A. 255.255.255.0
- B. 255.255.255.128
- C. 255.255.255.192
- D. 255.255.255.248

Answer: A

NEW QUESTION 519

- (Exam Topic 2)

Which of the following MUST be kept synchronized in order for Kerberos to work?

- A. Certificate
- B. Ticket
- C. Time
- D. Token

Answer: C

NEW QUESTION 521

- (Exam Topic 2)

Which of the following allows a central point to simultaneously address other points without addressing all of them?

- A. Multicast
- B. Subnetting
- C. Unicast
- D. Broadcast

Answer: A

NEW QUESTION 524

- (Exam Topic 2)

Which of the following allows a technician to gather information about the operating system?

- A. Domain services
- B. Fingerprinting
- C. Countermeasures
- D. Reconnaissance

Answer: B

NEW QUESTION 529

- (Exam Topic 2)

A user is unable to print to a network printer. Which of following is the FIRST step that a technician should take to troubleshoot the issue?

- A. Identify the problem.
- B. Establish a plan of action to resolve the problem.
- C. Establish a theory of probable cause.
- D. Implement preventative measures.

Answer: A

NEW QUESTION 534

- (Exam Topic 2)

Which of the following specifications would Sara, an administrator, implement as a network access control?

- A. 802.1q
- B. 802.3
- C. 802.11n
- D. 802.1x

Answer: D

NEW QUESTION 538

- (Exam Topic 2)

A new firewall was recently installed blocking SMTP traffic. As a result, no one has Internet access. Which of the following has MOST likely occurred?

- A. Port security is blocking all traffic.
- B. An IDS is blocking all traffic.
- C. Implicit deny is blocking all traffic.
- D. SMTP is blocking all traffic.

Answer: C

NEW QUESTION 542

- (Exam Topic 2)

A firewall that operates at Layer 7 of the OSI model is known as a(n):

- A. Circuit gateway
- B. Packet filter
- C. Application level
- D. Redundant firewall

Answer: C

NEW QUESTION 546

- (Exam Topic 2)

A technician recently fixed a computer with several viruses and spyware programs on it and notices the Internet settings were set to redirect all traffic through an unknown proxy. This type of attack is known as which of the following?

- A. Phishing
- B. Social engineering
- C. Man-in-the-middle
- D. Shoulder surfing

Answer: C

NEW QUESTION 547

- (Exam Topic 2)

A technician, Joe, visits a site that has reported a network down emergency. He immediately reboots the switches and the router since the network is down. Which of the following network troubleshooting methodology steps should Joe have performed FIRST?

- A. Determine if anything has changed
- B. Once a theory is confirmed determine the next step is to resolve the problem
- C. Implement the solution or escalate as necessary
- D. Question the obvious

Answer: A

NEW QUESTION 549

- (Exam Topic 2)

Which of the following ports should be allowed through a firewall to allow DNS resolution to occur to an outside DNS server?

- A. 20
- B. 53
- C. 80
- D. 3389

Answer: B

NEW QUESTION 552

- (Exam Topic 2)

Which of the following is true about an IP address if the first bit is a one and the second bit is a zero?

- A. The address is a Class A address.
- B. The address is a Class B address.
- C. The address is a Class C address.
- D. The address is a Class D address.

Answer: B

NEW QUESTION 557

- (Exam Topic 2)

Something you have, something you are, and something you know are the three tenets of:

- A. Social engineering
- B. Change management
- C. Remote access
- D. Access control

Answer: D

NEW QUESTION 561

- (Exam Topic 2)

Which of the following would Sandy, a technician, find in a network map?

- A. QoS standards
- B. MDF/IDFs
- C. System logs
- D. Firewall rules

Answer: B

NEW QUESTION 562

- (Exam Topic 2)

Which of the following commands will display the associated IP address of a network adapter in Windows and Linux environments? (Select TWO).

- A. dig
- B. nslookup
- C. nbstat
- D. ifconfig
- E. ipconfig

Answer: DE

NEW QUESTION 565

- (Exam Topic 2)

A network technician needs to address bandwidth issues on the wireless network. There are currently four 802.11n access points. The technician would like to increase the bandwidth. Which of the following would be the BEST solution?

- A. Disable SSID
- B. Channel bonding
- C. MIMO
- D. Increase the signal

Answer: B

NEW QUESTION 566

- (Exam Topic 3)

A national cable company providing TV, telephone, and Internet service to home users over its IP network, has been tracking a large increase of network bandwidth due to P2P file sharing. Which of the following should the company deploy to ensure excellent TV and telephone service?

- A. QoS
- B. Load balancing
- C. High availability
- D. Fiber optics

Answer: A

NEW QUESTION 568

- (Exam Topic 3)

Which of the following would Kim, a technician, do to monitor remote traffic through an access point?

- A. Enable an SNMP agent
- B. Enable network mapping
- C. Set monitoring SSID
- D. Select WPA2

Answer: A

NEW QUESTION 571

- (Exam Topic 3)

Jeff, a business owner, has discovered that several of the nearby businesses have wireless networks. Jeff wants to implement a unique wireless network inside the business. Which of the following should be configured on the wireless access point to reduce interference from the other wireless networks?

- A. PPPoE authentication
- B. MAC filtering
- C. WPA encryption
- D. Wireless channel

Answer: D

NEW QUESTION 572

- (Exam Topic 3)

Which of the following protocols is used to securely connect to a multi-layer switch?

- A. HTTP
- B. SMTP
- C. SSH
- D. Telnet

Answer: C

NEW QUESTION 577

- (Exam Topic 3)

A new monitoring device is installed in the network that uses ping to determine whether critical network Internet routers are up. After three missing pings, the alarm reports the device is down. The device is now constantly reporting alarms, yet there are no reported Internet problems from users. Which of the following is the MOST likely cause?

- A. A missing route on the alarm device.
- B. Incorrect VLAN assignment on the router.
- C. A missing route on the network routers.
- D. Incorrect speed/duplex setting on the alarm device.

Answer: D

NEW QUESTION 580

- (Exam Topic 3)

When configuring a wireless access point, Zach, a network administrator, needs to determine the MAC address of a local printer. Which of the following commands would be MOST helpful in determining the MAC address?

- A. ping
- B. arp
- C. route
- D. dig

Answer: B

NEW QUESTION 582

- (Exam Topic 3)

A network administrator is troubleshooting an intermittent network issue between devices that have a particularly long cable run. The issue was escalated to a network designer who alluded to potential attenuation issues. Which of the following BEST describes what the network designer was referring to?

- A. Bad connectors
- B. Cross-talk
- C. EMI / Interference
- D. dB loss

Answer: D

NEW QUESTION 586

- (Exam Topic 3)

Kim, a technician, needs to locate a cable in an unorganized wiring closet. Which of the following tools will help her locate the cable?

- A. Protocol analyzer
- B. Cable tester
- C. Toner probe
- D. Punch down tool

Answer: C

NEW QUESTION 588

- (Exam Topic 3)

A network administrator notices that all of the company switches are running at capacity on a given day, which is abnormal according to network baselines taken recently. Which tool would BEST allow the administrator to inspect what type of traffic is on the network?

- A. Wire tap
- B. Network sniffer
- C. Load balancing appliance
- D. NIPS

Answer: B

NEW QUESTION 591

- (Exam Topic 3)

A company only wants preapproved laptops to be able to connect to a wireless access point. Which of the following should be configured?

- A. SSID disable
- B. ACL rules
- C. WPA encryption
- D. MAC filtering

Answer: D

NEW QUESTION 592

- (Exam Topic 3)

A company is experiencing accessibility issues reaching services on a cloud-based system. Which of the following monitoring tools should be used to locate possible outages?

- A. Network analyzer
- B. Packet analyzer
- C. Protocol analyzer
- D. Network sniffer

Answer: A

Explanation:

A network analyzer is a useful tool, helping you do things like track traffic and malicious usage on the network.

NEW QUESTION 596

- (Exam Topic 3)

An administrator hosts all of the company's virtual servers internally. In the event of total server failure, the server images can be restored on a cloud provider and accessed through the VPN.

Which of the following cloud services is the administrator using?

- A. Community PaaS
- B. Public IaaS
- C. Hybrid SaaS
- D. Private IaaS

Answer: B

NEW QUESTION 600

- (Exam Topic 3)

Which of the following should be implemented in a networked environment carrying teleconferencing packets?

- A. L2TP
- B. SSH
- C. QoS
- D. SNMP

Answer: C

NEW QUESTION 605

- (Exam Topic 3)

When Jeff, a technician, is troubleshooting a problem, which of the following is the NEXT step after verifying full system functionality?

- A. Establish a plan of action to resolve the problem and identify potential effects.
- B. Implement the solution.
- C. Establish a theory of probable cause.
- D. Document findings, actions, and outcomes.

Answer: D

NEW QUESTION 606

- (Exam Topic 3)

Which of the following DNS records allows for reverse lookup of a domain?

- A. PTR
- B. AAAA
- C. A
- D. MX

Answer: A

NEW QUESTION 609

- (Exam Topic 3)

Which of the following devices are MOST often responsible for 1q tagging? (Select TWO).

- A. Switch
- B. Router
- C. IDS
- D. Hub
- E. IPS
- F. Network tap

Answer: AB

NEW QUESTION 610

- (Exam Topic 3)

Which of the following layers of the OSI model is between the Data Link and Transport layers?

- A. Application
- B. Session
- C. Network
- D. Physical

Answer: C

NEW QUESTION 614

- (Exam Topic 3)

An organization wants to perform maintenance on any of its web servers without affecting the service availability during a scheduled change window. Which of the following network devices would be required to provide this functionality?

- A. Router
- B. Forward proxy
- C. Load balancer
- D. Firewall

Answer: C

NEW QUESTION 619

- (Exam Topic 3)

Which of the following is the correct representation of an IPv6 address?

- A. ::
- B. 0:0:0:0:0:0:0:1
- C. 1:2:3:4:AB:CD:EF
- D. 2001::4860:800f::

Answer: A

NEW QUESTION 621

- (Exam Topic 3)

Which of the following cloud infrastructure designs includes on premise servers utilizing a centralized syslog server that is hosted at a third party organization for review?

- A. Hybrid
- B. Public
- C. Community
- D. Private

Answer: A

NEW QUESTION 624

- (Exam Topic 3)

Which of the following methods limits access to a network based on characteristics of the network card?

- A. IP filtering
- B. MAC filtering
- C. Port filtering
- D. Encryption

Answer: B

NEW QUESTION 626

- (Exam Topic 3)

Lisa, a network technician, needs to introduce a few more cables to the existing patch panel. Which of the following tools would she use?

- A. OTDR
- B. Multimeter
- C. Punch down tool
- D. Temperature monitor

Answer: C

NEW QUESTION 627

- (Exam Topic 3)

A technician needs to verify an Ethernet run is functioning properly. Which of the following tools should be used?

- A. Protocol analyzer
- B. Crimper
- C. Cable tester
- D. Punch down tool

Answer: C

NEW QUESTION 630

- (Exam Topic 3)

A user is unable to connect to a server in another building. A technician is troubleshooting the issue and determines the following:

- 1) Client PC 1 has an IP address of 192.168.10.25/25
- 2) PC 1 can successfully ping its gateway of 192.168.10.1/25 which is an interface of router A
- 3) Server A is named 'BLDGBFILESVR01' and has an IP address of 192.168.10.145/25
- 4) PC 2 with an IP address of 192.168.10.200/25 can successfully ping server A

However, when PC 1 pings server A, it receives a destination host unreachable response. Which of the following is the MOST likely cause?

- A. Link from router A to PC 1 are on different subnets
- B. Link from router A to server A is down
- C. Link from PC 1 to router A has duplex issues
- D. Link from server A to PC 2 is down

Answer: A

NEW QUESTION 634

- (Exam Topic 3)

Lisa, an administrator, has set up an 802.11n wireless network. Users with 802.11n laptops have reported that speeds are slow. After testing, Lisa determines that users max out at 802.11g speeds. Which of the following would MOST likely fix this issue?

- A. Enable wireless multimedia (WMM) for QoS
- B. Use the 40MHz channels in the 2.4GHz band
- C. Enable access point antenna isolation
- D. Limit the clients to 802.11g compatible laptops

Answer: A

NEW QUESTION 637

- (Exam Topic 3)

Which of the following protocols are used for accessing a command line terminal session for management purposes? (Select TWO).

- A. Telnet
- B. FTP
- C. SNMP
- D. SSH
- E. RDP

Answer: AD

NEW QUESTION 640

- (Exam Topic 3)

A company has attempted to introduce a new major network segment to allow growth in capacity. On the core switch, a GBIC was used to interconnect with a newly placed downstream distribution switch for the first time. Soon after this implementation, a network flood and an outage occurred between the core and new distribution network modules. Which of the following should the network administrator troubleshoot FIRST in order to rectify the issue?

- A. Check for switching loops between core and distribution switches.
- B. Check whether an incorrect VLAN has been assigned to the new distribution switch.
- C. Check for inconsistent or missing routes between the core and distribution switches.
- D. Check whether the GBIC was set to multi-mode instead of single-mode SFP.

Answer: A

NEW QUESTION 642

- (Exam Topic 3)

A user is getting very weak signals while trying to connect to the wireless. Which of the following should the user do to help with signal strength?

- A. Call the wireless provider and ask for a T3 circuit.
- B. Move the wireless router to a better location where line of sight is obtained.
- C. Reinstall the operating system to the PC to ensure the newest patches are installed.
- D. Install a hub to ensure there is a clear path for the cables to run.

Answer: B

NEW QUESTION 645

- (Exam Topic 3)

An analog POTS voice line is no longer working and Kim, the technician, is tasked to verify if a dial tone is present at the IDF. Which of the following tools would be used?

- A. Protocol analyzer
- B. Butt set
- C. OTDR
- D. Toner probe

Answer: B

NEW QUESTION 650

- (Exam Topic 3)

A technician looks at an ARP table in an attempt to resolve a connectivity issue. After table of the switch is a cleared, a different MAC in the output, Which of the following does this indicate?

- A. ARP flooding
- B. VLAN mismatch
- C. Duplicate IP address
- D. Faulty NIC

Answer: A

NEW QUESTION 652

- (Exam Topic 3)

Which of the following is networking stand-alone hardware that will permit any WiFi-compliant device to connect to a network?

- A. Wireless hub
- B. Wireless firewall
- C. Wireless access point
- D. Wireless bridge

Answer: C

NEW QUESTION 657

- (Exam Topic 3)

A network technician wants to baseline traffic flows on a specific network. Which of the following will provide the GREATEST level of detail?

- A. Network flow information
- B. SNMP traps
- C. Debug level syslog

D. Protocol analyzer

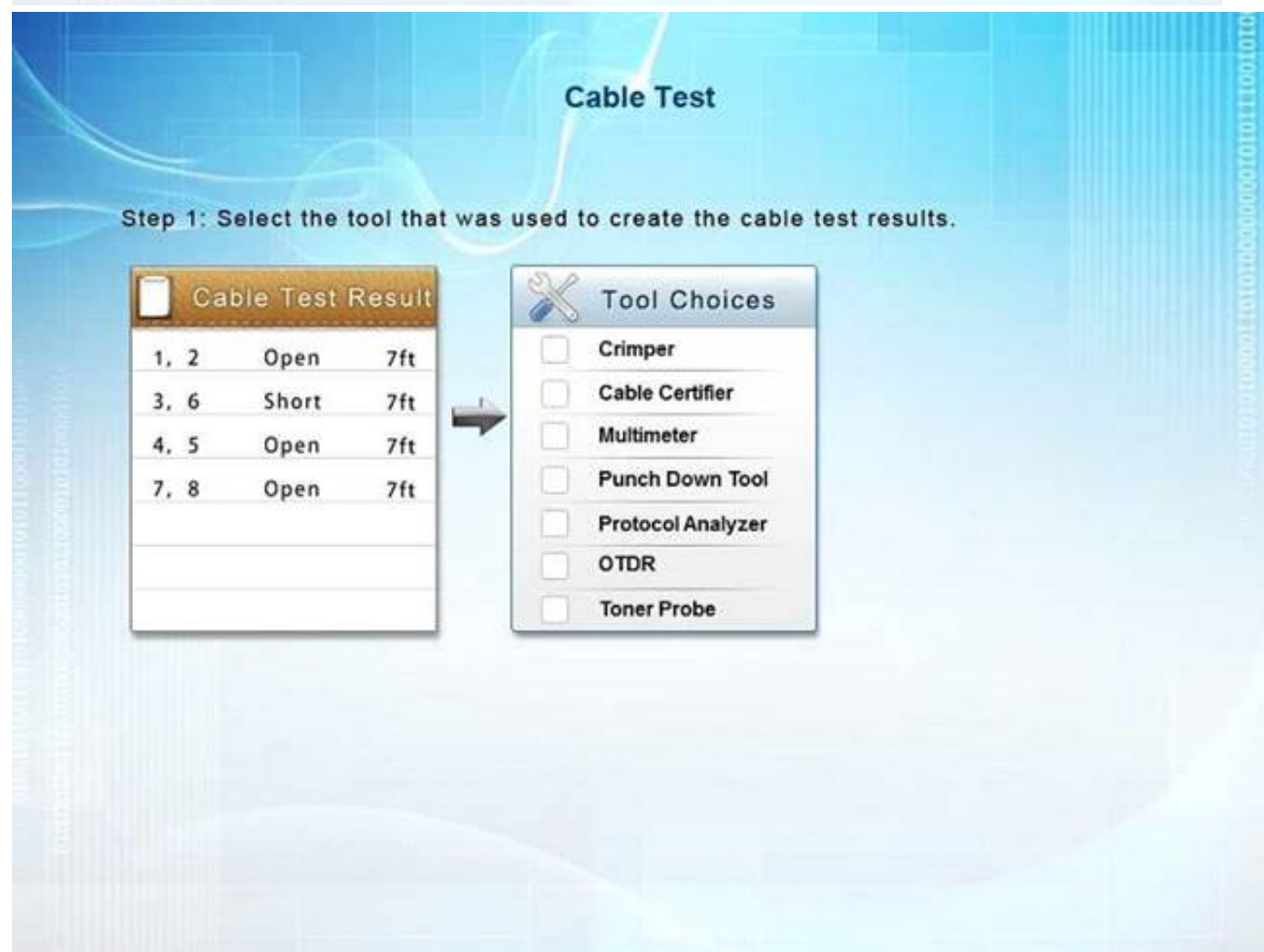
Answer: D

NEW QUESTION 658

- (Exam Topic 3)

You have been tasked with testing a CAT5e cable. A summary of the test results can be found on the screen. Step 1: Select the tool that was used to create the cable test results.

Step 2: Interpret the test results and select the option that explains the results. After you are done with your analysis, click the 'Submit Cable Test Analysis' button.



A. Mastered

B. Not Mastered

Answer: A

Explanation:

ACable Certifier provides "Pass" or "Fail" information in accordance with industry standards but can also show detailed information when a "Fail" occurs. This includes shorts, the wire pairs involved and the distance to the short. When a short is identified, at the full length of the cable it means the cable has not been crimped correctly.

NEW QUESTION 659

- (Exam Topic 3)

A technician replaces a customer's router, and is now unable to ping the ISP's gateway. Which of the following should the technician check?

- A. The arp table of the new customer's router.
- B. The route table of the next-hop router.
- C. The route table of the new customer's router.
- D. The arp table of a network user.

Answer: C

NEW QUESTION 660

- (Exam Topic 3)

A network administrator wants to monitor traffic by deploying MIBs. Which of the follow network monitoring resources would be used?

- A. SCTP
- B. Packet sniffer
- C. DCCP
- D. SNMP

Answer: D

NEW QUESTION 663

- (Exam Topic 3)

Which of the following devices can be used to offload outbound web server SSL encryption overhead?

- A. NIPS
- B. Proxy server
- C. Content filter
- D. VPN connectator

Answer: B

NEW QUESTION 668

- (Exam Topic 3)

Which of the follow creates a secure remote connection at the OSI network layer?

- A. L2TP
- B. SSL
- C. DTLS
- D. IPSec

Answer: D

NEW QUESTION 671

- (Exam Topic 3)

A user snapped the retention tab off of a network cable. Which of the following tools would Jeff, a technician, use to replace the RJ-45 connector?

- A. Wire tester
- B. Punch down
- C. Crimper
- D. Multimeter

Answer: C

NEW QUESTION 674

- (Exam Topic 3)

Which of the following media types can carry a standard Ethernet signal for network connectivity?

- A. USB
- B. PArallel
- C. Serial
- D. CAT6

Answer: D

NEW QUESTION 676

- (Exam Topic 3)

Kim, a technician, is installing a switch that does not feature auto-negotiation. Which of the following characteristics would need to be manually configured? (Select TWO).

- A. MAC addressing
- B. IP addressing
- C. Port speed
- D. IPv6 addressing
- E. Duplex

Answer: CE

NEW QUESTION 677

- (Exam Topic 3)

Which of the following could be used to estimate RTT across a router?

- A. Dig
- B. Traceroute
- C. Arp
- D. Uptime

Answer: B

NEW QUESTION 679

- (Exam Topic 3)

Lisa, a consultant, is inspecting an office that reports frequent wireless issues. Upon scanning the network broadcasting in the vicinity of the office, seven SSIDs are found. The company's Wi-Fi network and three others all share channel six. Which of the following is MOST likely causing the issue?

- A. Frequency interference
- B. Low signal strength
- C. Standard mismatch
- D. Incorrect channel

Answer: A

NEW QUESTION 680

- (Exam Topic 3)

A user reports a network failure on a computer. The technician determines that the computer and NIC are operating properly. Which of the following tools can the technician use to trace the network cabling back to the punch down block?

- A. Protocol analyzer
- B. Multimeter
- C. Punch down tool
- D. Toner probe

Answer: D

NEW QUESTION 683

- (Exam Topic 3)

A company decides to deploy customer-facing, touch-scan kiosks. The kiosks appear to have several open service ports that could potentially become compromised. Which of the following is the MOST effective way to protect the kiosks?

- A. Install an IDS to monitor all traffic to and from the kiosks.
- B. Install honeypots on the network to detect and analyze potential kiosk attacks before they occur.
- C. Enable switchport security on the ports to which the kiosks are connected to prevent network –level attacks.
- D. Create a new network segment with ACLs, limiting kiosks' traffic with the internal network.

Answer: D

NEW QUESTION 688

- (Exam Topic 3)

A network technician is configuring user's access to a VPN concentrator and has advised to use a protocol that supports encryption over UDP. Which of the following protocols has the technician MOST likely configured for client use?

- A. TFTP
- B. DTLS
- C. DNS
- D. SNMP

Answer: B

NEW QUESTION 693

- (Exam Topic 3)

Which of the following protocols is used for remote management of devices?

- A. SNMP
- B. TFTP
- C. Syslog
- D. SMTP

Answer: A

NEW QUESTION 696

- (Exam Topic 3)

A network technician receives a call from a branch office about a problem with its wireless connectivity. The user states the office hosting a large meeting that includes some online training with local businesses. The guest users have all brought devices to connect to the guest network at the branch office. All users are connected to a single WAP and are reporting that connections dropping and network speeds are unusable. Which of the following is the MOST likely cause of this issue?

- A. DCHP exhaustion
- B. Chanel overlapping
- C. Interference
- D. Overcapacity

Answer: C

NEW QUESTION 700

- (Exam Topic 3)

Which of the following needs to be configured on a switch to use a packet sniffer?

- A. Port trunking
- B. Port mirroring
- C. Tagged VLAN
- D. Untagged VLAN

Answer: B

NEW QUESTION 703

- (Exam Topic 3)

A network administrator has created a virtual machine in the cloud. The technician would like to connect to the server remotely using RDP.

Which of the following default ports needs to be opened?

- A. 445
- B. 3389
- C. 5004
- D. 5060

Answer: B

NEW QUESTION 707

- (Exam Topic 3)

Which of the following is used to create a secure connection between a client and a host?

- A. VLAN
- B. Proxy server
- C. IIS server
- D. VPN

Answer: D

NEW QUESTION 710

- (Exam Topic 3)

At which of the following layers of the OSI model do packets exist?

- A. Network
- B. Session
- C. Data link
- D. Transport

Answer: A

NEW QUESTION 711

- (Exam Topic 3)

Which of the following protocols is used to allow multiple hosts to share a common IP address?

- A. HTTPS
- B. ARP
- C. CARP
- D. NAT

Answer: D

NEW QUESTION 715

- (Exam Topic 3)

A network technician configures a firewall to block only certain IP addresses from accessing the Internet. All users are reporting that they are unable to access the Internet.

Which of the following is the MOST likely reason?

- A. Incorrectly configured ACL
- B. Implicit allow statement
- C. SMTP requests are being denied
- D. All protocols are being allowed in

Answer: A

NEW QUESTION 719

- (Exam Topic 3)

No link lights on a switch's SFP are functioning, so the network technician re-terminates the end. After testing the cable, the tester is showing a db loss of -9. Which of the following types of cable is MOST likely being tested?

- A. Fiber
- B. CAT3
- C. CAT5e
- D. CAT6a

Answer: A

NEW QUESTION 720

- (Exam Topic 3)

An administrator is troubleshooting analog telephony issues on the punch down block. Which of the following tools would be MOST useful in this scenario?

- A. T1 loopback
- B. Butt set
- C. Multimeter
- D. Protocol analyzer

Answer: B

NEW QUESTION 721

- (Exam Topic 3)

A junior technician is settings up a voice control device so the Chief Executive Officer (CEO) will able to control various things in the office. Of which of the following types of the IoT technologies is this an example?

- A. LAN
- B. WAN
- C. SAN
- D. PAN

Answer: B

NEW QUESTION 723

- (Exam Topic 3)

Which of the following technologies allows for redundant links within a Layer 2 segment?

- A. OSPF
- B. RIP
- C. Port Mirroring
- D. Spanning Tree

Answer: D

NEW QUESTION 726

- (Exam Topic 3)

Lisa, a technician, has configured a new switch that is remotely accessed using SSH. The switch is working properly but cannot be accessed remotely. Which of the following items is MOST likely missing in the configuration?

- A. Port speed
- B. Cryptokey
- C. Data VLAN
- D. NAT/PAT

Answer: B

NEW QUESTION 728

- (Exam Topic 3)

Jeff, a user, is having a problem with a POTS line. Which of the following tools would Jeff use to make sure the phone lines have a dial tone?

- A. Loopback plugs
- B. Butt set
- C. Cable certifier
- D. Toner probe

Answer: B

NEW QUESTION 733

- (Exam Topic 3)

A mobile user is no longer able to access network resources. Jeff, the network technician, is unable to ping the user's workstation. Which of the following commands would MOST likely be used on that workstation to verify its current network settings?

- A. net share
- B. hostname
- C. ipconfig

D. tracer

Answer: C

NEW QUESTION 735

- (Exam Topic 3)

A technician needs to limit the amount of broadcast traffic on a network and allow different segments to communicate with each other. Which of the following options would satisfy these requirements?

- A. Add a router and enable OSPF.
- B. Add a layer 3 switch and create a VLAN.
- C. Add a bridge between two switches.
- D. Add a firewall and implement proper ACL.

Answer: B

Explanation:

We can limit the amount of broadcast traffic on a switched network by dividing the computers into logical network segments called VLANs.

A virtual local area network (VLAN) is a logical group of computers that appear to be on the same LAN even if they are on separate IP subnets. These logical subnets are configured in the network switches. Each VLAN is a broadcast domain meaning that only computers within the same VLAN will receive broadcast traffic.

To allow different segments (VLAN) to communicate with each other, a router is required to establish a connection between the systems. We can use a network router to route between the VLANs or we can use a 'Layer 3' switch. Unlike layer 2 switches that can only read the contents of the data-link layer protocol header in the packets they process, layer 3 switches can read the (IP) addresses in the network layer protocol header as well.

NEW QUESTION 736

- (Exam Topic 3)

Several users from the same building are reporting connectivity issues. The SFP at that building's IDF switch is showing a link light, but there is no link light to the corresponding switch's SFP at the MDF. Which of the following is the MOST likely cause?

- A. A crossover cable is being used.
- B. DB loss is too high on all strands.
- C. Only TX or RX strand is working.
- D. TX and RX are reversed.

Answer: C

NEW QUESTION 741

- (Exam Topic 3)

A company is having a new T1 line installed. Which of the following will the connection MOST likely terminate to?

- A. Core switch
- B. MDF
- C. Ethernet router
- D. IDF

Answer: B

NEW QUESTION 745

- (Exam Topic 3)

A network technician at a small office upgrades the VLAN switch. After the upgrade, a user reports being unable to access network resources. When the technician checks the switchport, the LED light is not lit. Which of the following should technician check FIRST?

- A. The device is using the correct cable type.
- B. The switchport is functioning properly.
- C. The device is connected to the switch.
- D. The switch is connected to the router.

Answer: C

NEW QUESTION 747

- (Exam Topic 3)

Which of the following is the prefix for a link-local IPv6 address?

- A. FE80::/10
- B. FF00::/8
- C. 2FFE::/16
- D. FEEF:/12

Answer: A

NEW QUESTION 750

- (Exam Topic 3)

Which of the following devices is used to distribute network traffic equally over multiple links?

- A. Content filter
- B. DNS server

C. Load balancer
D. Proxy server

Answer: C

NEW QUESTION 751

.....

THANKS FOR TRYING THE DEMO OF OUR PRODUCT

Visit Our Site to Purchase the Full Set of Actual N10-007 Exam Questions With Answers.

We Also Provide Practice Exam Software That Simulates Real Exam Environment And Has Many Self-Assessment Features. Order the N10-007 Product From:

<https://www.2passeasy.com/dumps/N10-007/>

Money Back Guarantee

N10-007 Practice Exam Features:

- * N10-007 Questions and Answers Updated Frequently
- * N10-007 Practice Questions Verified by Expert Senior Certified Staff
- * N10-007 Most Realistic Questions that Guarantee you a Pass on Your FirstTry
- * N10-007 Practice Test Questions in Multiple Choice Formats and Updatesfor 1 Year