

MS-100 Dumps

Microsoft 365 Identity and Services

<https://www.certleader.com/MS-100-dumps.html>



NEW QUESTION 1

- (Exam Topic 1)

You company has a Microsoft Azure Active Directory (Azure AD) tenant that contains the users shown in the following table.

The tenant includes a security group named Admin1. Admin1 will be used to manage administrative accounts. You need to identify which users can perform the following administrative tasks:

- ▶ Create guest user accounts.
- ▶ Add User3 to Admin1.

Which users should you identify for each task? To answer, select the appropriate options in the answer area. NOTE: Each correct selection is worth one point.

Create guest user accounts:

▼
User4 only
User2 only
User3 only
User2 and User3 only
User1, User2 and User3 only
User1, User2, User3, and User4

Add User3 to Admin1:

▼
User4 only
User2 only
User3 only
User2 and User3 only
User1, User2 and User3 only
User1, User2, User3, and User4

- A. Mastered
- B. Not Mastered

Answer: A

Explanation:

References:

<https://docs.microsoft.com/en-us/azure/active-directory/users-groups-roles/directory-assign-admin-roles>

NEW QUESTION 2

- (Exam Topic 1)

Your network contains an Active Directory forest named contoso.local. You purchase a Microsoft 365 subscription.

You plan to move to Microsoft and to implement a hybrid deployment solution for the next 12 months. You need to prepare for the planned move to Microsoft 365.

What is the best action to perform before you implement directory synchronization? More than one answer choice may achieve the goal. Select the BEST answer.

- A. Purchase a third-party X.509 certificate.
- B. Rename the Active Directory forest.
- C. Purchase a custom domain name.
- D. Create an external forest trust.

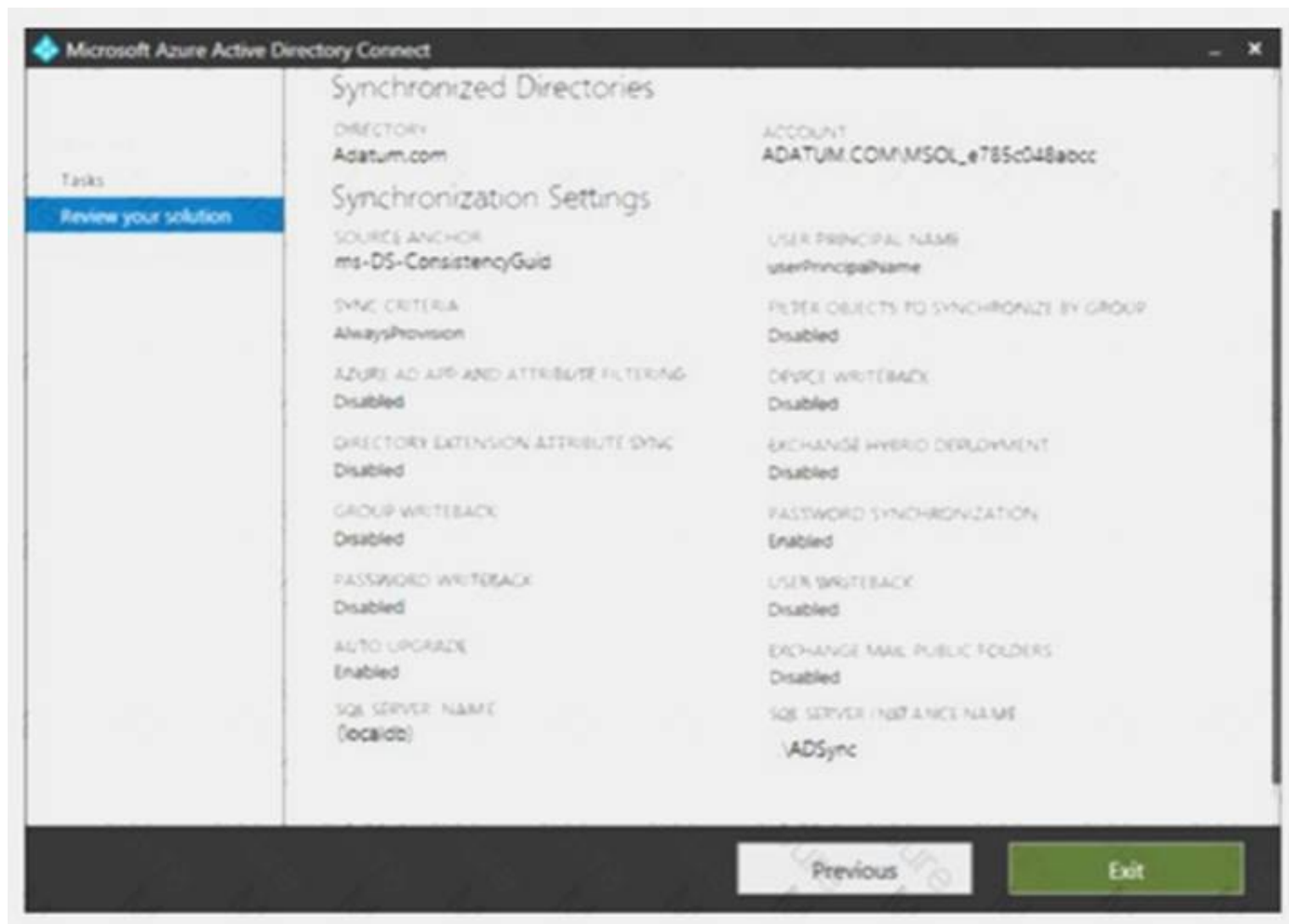
Answer: C

NEW QUESTION 3

- (Exam Topic 1)

Your company has a hybrid deployment of Microsoft 365.

An on-premises user named User1 is synced to Microsoft Azure Active Directory (Azure AD). Azure AD Connect is configured as shown in the following exhibit.



Use the drop-down menus to select the answer choice that completes each statement based on the information presented in the graphic.
NOTE: Each correct selection is worth one point.

User1 [answer choice].

cannot change her password from any Microsoft portals

can change her password by using self-service password reset feature only

an change her password from the Office 365 admin center only

If the password for User1 is changed in Active Directory, [answer choice].

the password will be synchronized to Azure AD

a new randomly generated password will be assigned to User1

the password in Azure AD will be unchanged

- A. Mastered
- B. Not Mastered

Answer: A

Explanation:

User1 [answer choice].

cannot change her password from any Microsoft portals

can change her password by using self-service password reset feature only

an change her password from the Office 365 admin center only

If the password for User1 is changed in Active Directory, [answer choice].

the password will be synchronized to Azure AD

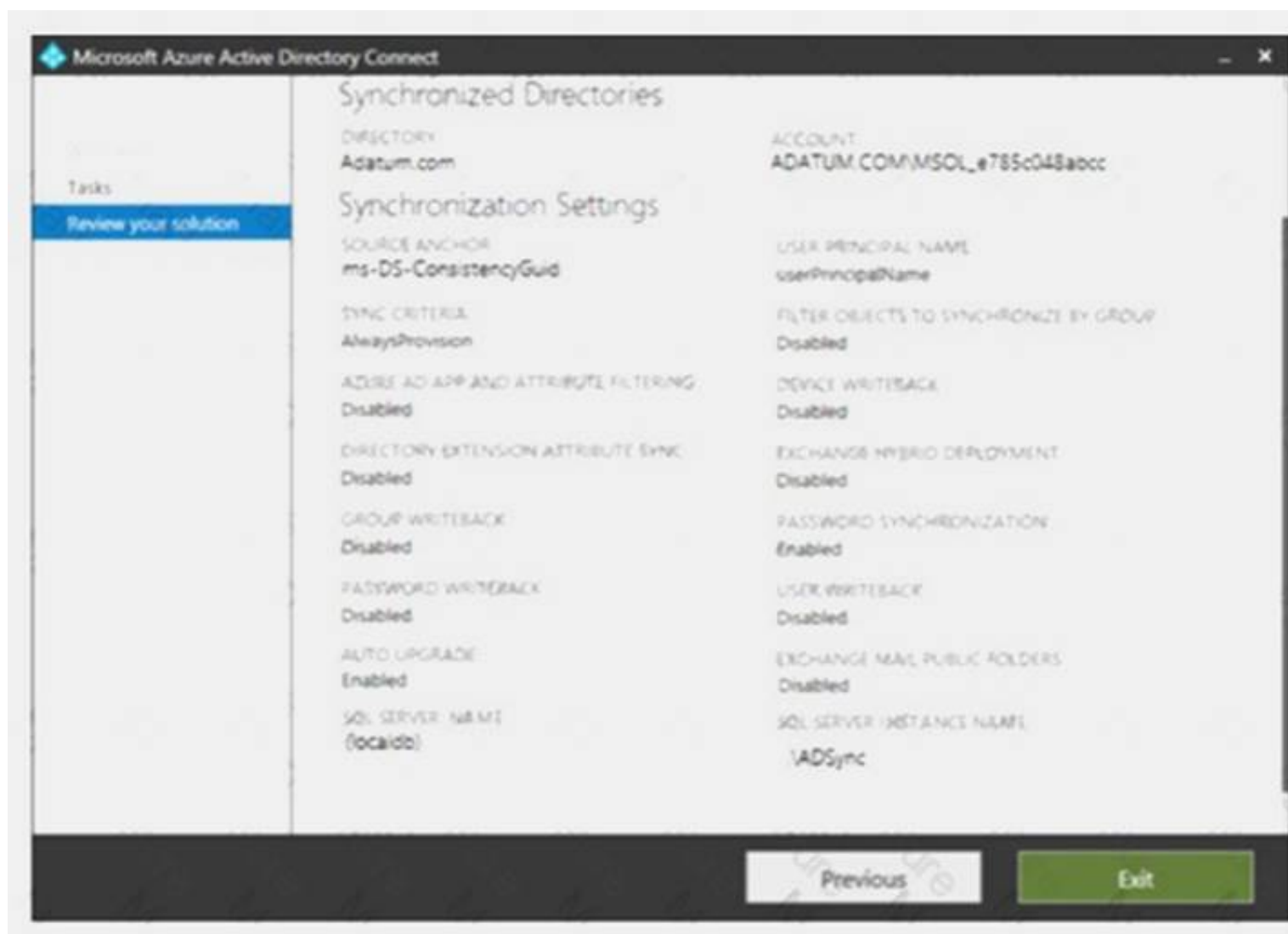
a new randomly generated password will be assigned to User1

the password in Azure AD will be unchanged

NEW QUESTION 4

- (Exam Topic 1)

Your network contains an on-premises Active Directory domain that is synced to Microsoft Azure Active Directory (Azure AD) as shown in the following exhibit.



An on-premises Active Directory user account named Allan Yoo is synchronized to Azure AD. You view Allan's account from Microsoft 365 and notice that his username is set to Allan@contoso.onmicrosoft.com.

For each of the following statements, select Yes if the statement is true. Otherwise, select No. NOTE: Each correct selection is worth one point.

Statements	Yes	No
From the Azure portal, you can reset the password of Allan Yoo.	<input type="radio"/>	<input type="radio"/>
From the Azure portal, you can configure the job title of Allan Yoo.	<input type="radio"/>	<input type="radio"/>
From the Azure portal, you can configure the usage location of Allan Yoo.	<input type="radio"/>	<input type="radio"/>

- A. Mastered
B. Not Mastered

Answer: A

Explanation:

Statements	Yes	No
From the Azure portal, you can reset the password of Allan Yoo.	<input type="radio"/>	<input checked="" type="radio"/>
From the Azure portal, you can configure the job title of Allan Yoo.	<input type="radio"/>	<input checked="" type="radio"/>
From the Azure portal, you can configure the usage location of Allan Yoo.	<input checked="" type="radio"/>	<input type="radio"/>

NEW QUESTION 5

- (Exam Topic 1)

Your company has a Microsoft Azure Active Directory (Azure AD) tenant named contoso.com that includes the users shown in the following table.

Name	Usage location	Membership
User1	Not applicable	Group1
User2	United States	Group2
User3	United States	Not applicable

Group2 is a member of Group1.

You assign a Microsoft Office 365 Enterprise E3 license to User2 as shown in the following exhibit.

License options

Office 365 Enterprise E3

Azure Rights Management	<input checked="" type="checkbox"/> Off	<input type="checkbox"/> On
Exchange Online (Plan 2)	<input checked="" type="checkbox"/> Off	<input type="checkbox"/> On
Flow for Office 365	<input checked="" type="checkbox"/> Off	<input type="checkbox"/> On
Microsoft Forms (Plan E3)	<input checked="" type="checkbox"/> Off	<input type="checkbox"/> On
Microsoft Planner	<input checked="" type="checkbox"/> Off	<input type="checkbox"/> On
Microsoft StaffHub	<input checked="" type="checkbox"/> Off	<input type="checkbox"/> On
Microsoft Teams	<input checked="" type="checkbox"/> Off	<input type="checkbox"/> On
Office 365 ProPlus	<input checked="" type="checkbox"/> Off	<input type="checkbox"/> On
Office Online	<input checked="" type="checkbox"/> Off	<input type="checkbox"/> On
PowerApps for Office 365	<input checked="" type="checkbox"/> Off	<input type="checkbox"/> On
SharePoint Online (Plan 2)	<input type="checkbox"/> Off	<input checked="" type="checkbox"/> On
Skype for Business Online (Plan 2)	<input checked="" type="checkbox"/> Off	<input type="checkbox"/> On
Stream for Office 365	<input checked="" type="checkbox"/> Off	<input type="checkbox"/> On
Sway	<input checked="" type="checkbox"/> Off	<input type="checkbox"/> On
To-Do (Plan 2)	<input checked="" type="checkbox"/> Off	<input type="checkbox"/> On
Yammer Enterprise	<input checked="" type="checkbox"/> Off	<input type="checkbox"/> On

You assign Office 365 Enterprise E3 licenses to Group1 as shown in the following exhibit.

License options

Office 365 Enterprise E3

Azure Rights Management	<input checked="" type="checkbox"/> Off	<input type="checkbox"/> On
Exchange Online (Plan 2)	<input type="checkbox"/> Off	<input checked="" type="checkbox"/> On
Flow for Office 365	<input checked="" type="checkbox"/> Off	<input type="checkbox"/> On
Microsoft Forms (Plan E3)	<input checked="" type="checkbox"/> Off	<input type="checkbox"/> On
Microsoft Planner	<input checked="" type="checkbox"/> Off	<input type="checkbox"/> On
Microsoft StaffHub	<input checked="" type="checkbox"/> Off	<input type="checkbox"/> On
Microsoft Teams	<input checked="" type="checkbox"/> Off	<input type="checkbox"/> On
Office 365 ProPlus	<input checked="" type="checkbox"/> Off	<input type="checkbox"/> On
Office Online	<input checked="" type="checkbox"/> Off	<input type="checkbox"/> On
PowerApps for Office 365	<input checked="" type="checkbox"/> Off	<input type="checkbox"/> On
SharePoint Online (Plan 2)	<input checked="" type="checkbox"/> Off	<input type="checkbox"/> On
Skype for Business Online (Plan 2)	<input checked="" type="checkbox"/> Off	<input type="checkbox"/> On
Stream for Office 365	<input checked="" type="checkbox"/> Off	<input type="checkbox"/> On
Sway	<input checked="" type="checkbox"/> Off	<input type="checkbox"/> On
To-Do (Plan 2)	<input checked="" type="checkbox"/> Off	<input type="checkbox"/> On
Yammer Enterprise	<input checked="" type="checkbox"/> Off	<input type="checkbox"/> On

For each of the following statements, select Yes if the statement is true. Otherwise, select No. NOTE: Each correct selection is worth one point.

Statements	Yes	No
User1 is licensed to use Microsoft Exchange Online.	<input type="radio"/>	<input type="radio"/>
User1 is licensed to use Microsoft Exchange Online and Microsoft Share Point Online.	<input type="radio"/>	<input type="radio"/>
If you add User3 to Group2, the user will be licensed to use Microsoft Exchange Online.	<input type="radio"/>	<input type="radio"/>

- A. Mastered
- B. Not Mastered

Answer: A

Explanation:
Group-based licensing currently does not support groups that contain other groups (nested groups). If you apply a license to a nested group, only the immediate first-level user members of the group have the licenses applied.
References:
<https://docs.microsoft.com/en-us/azure/active-directory/users-groups-roles/licensing-group-advanced>

NEW QUESTION 6

- (Exam Topic 1)

Your organization has an on-premises Microsoft Exchange Server 2016 organization. The organization is in the company's main office in Melbourne. The main office has a low-bandwidth connection to the Internet.

The organization contains 250 mailboxes.

You purchase a Microsoft 365 subscription and plan to migrate to Exchange Online next month. In 12 months, you plan to increase the bandwidth available for the Internet connection.

You need to recommend the best migration strategy for the organization. The solution must minimize administrative effort.

What is the best recommendation to achieve the goal? More than one answer choice may achieve the goal. Select the BEST answer.

- A. network upload
- B. cutover migration
- C. hybrid migration
- D. staged migration

Answer: C

NEW QUESTION 7

- (Exam Topic 1)

Your company has a Microsoft Office 365 subscription that contains the groups shown in the following table.

Name	Members
Group1	User1, User2
Group2	User3

You have the licenses shown in the following table.

License	Included service	Assigned to
Microsoft 365	Microsoft Exchange Online	Group1
Microsoft 365	Microsoft SharePoint Online	User1, User2, User3

Another administrator removes User1 from Group1 and adds Group2 to Group1.

For each of the following statements, select Yes if the statement is true. Otherwise, select No. NOTE: Each correct selection is worth one point.

Statements	Yes	No
User1 is licensed for SharePoint Online.	<input type="radio"/>	<input type="radio"/>
User2 is licensed for SharePoint Online.	<input type="radio"/>	<input type="radio"/>
User3 is licensed for SharePoint Online.	<input type="radio"/>	<input type="radio"/>

- A. Mastered
- B. Not Mastered

Answer: A

Explanation:

The users are assigned SharePoint licenses directly. Their group memberships have no effect on licenses directly assigned to the user accounts.

NEW QUESTION 8

- (Exam Topic 1)

Your company has offices in several cities and 100.000 users. The network contains an Active Directory domain contoso.com.

You purchase Microsoft 365 and plan to deploy several Microsoft 365 services.

You are evaluating the implementation of pass-through authentication and seamless SSO. Azure AD Connect will NOT be in staging mode.

You need to identify the redundancy limits for the planned implementation.

What should you identify? To answer, select the appropriate options in the answer area. NOTE: Each correct selection is worth one point.

Maximum number of servers on which you can run
Azure AD Connect:

▼
1
2
4
6
11

Maximum number of servers on which you can run
standalone Authentication Agents:

▼
1
2
4
6
11

- A. Mastered
- B. Not Mastered

Answer: A

Explanation:

Maximum number of servers on which you can run Azure AD Connect:

1

2

4

6

11

Maximum number of servers on which you can run standalone Authentication Agents:

1

2

4

6

11

NEW QUESTION 9

- (Exam Topic 1)

Your company has a main office and 20 branch offices in North America and Europe. Each branch office connects to the main office by using a WAN link. All the offices connect to the Internet and resolve external host names by using the main office connections. You plan to deploy Microsoft 365 and to implement a direct Internet connection in each office. You need to recommend a change to the infrastructure to provide the quickest possible access to Microsoft 365 services. What is the best recommendation to achieve the goal? More than one answer choice may achieve the goal. Select the BEST answer.

- A. For all the client computers in the branch offices, modify the MTU setting by using a Group Policy object (GPO).
- B. In each branch office, deploy a proxy server that has user authentication enabled.
- C. In each branch office, deploy a firewall that has packet inspection enabled.
- D. In each branch office, configure name resolution so that all external hosts are redirected to public DNS servers directly.

Answer: D

NEW QUESTION 10

- (Exam Topic 1)

Note: This question is part of a series of questions that present the same scenario. Each question in the series contains a unique solution that might meet the stated goals. Some question sets might have more than one correct solution, while others might not have a correct solution. After you answer a question in this section, you will NOT be able to return to it. As a result, these questions will not appear in the review screen. Your company has a Microsoft Office 365 tenant. You suspect that several Office 365 features were recently updated. You need to view a list of the features that were recently updated in the tenant. Solution: You review the Security & Compliance report in the Microsoft 365 admin center. Does this meet the goal?

- A. Yes
- B. No

Answer: B

NEW QUESTION 10

- (Exam Topic 1)

Your network contains an on-premises Active Directory domain that is synced to Microsoft Azure Active Directory (Azure AD) as shown in the following two exhibits.

Microsoft Azure Active Directory Connect

Tasks

- Connect to Azure AD
- Sync
 - Connect Directories
 - Domain/OU Filtering
 - Optional Features
 - Azure AD Apps
 - Azure AD Attributes**
 - Directory Extensions
 - Configure

Azure AD attributes

These attributes will be exported to Azure AD based on the previously selected application. Remove an individual attribute only if required to meet string organizational security policy.

EXPORTED ATTRIBUTES

- ☒ domainNetBios
- ☒ employeeID
- ☒ extensionAttribute1
- ☐ extensionAttribute10
- ☐ extensionAttribute11
- ☒ extensionAttribute12
- ☒ extensionAttribute13
- ☒ extensionAttribute14
- ☒ extensionAttribute15
- ☒ extensionAttribute2
- ☒ extensionAttribute3
- ☒ extensionAttribute4

☒ I want to further limit the attributes exported to Azure AD. ?

☐ View the list of attribute as comma-separated values

Previous Next

Microsoft Azure Active Directory Connect

Tasks

- Connect to Azure AD
- Sync
 - Connect Directories
 - Domain/OU Filtering
 - Optional Features
 - Azure AD Apps
 - Azure AD Attributes**
 - Directory Extensions
 - Configure

Directory extensions

Synchronize directory extension attributes from on-premises to Azure AD to make them available to cloud-based apps.

Available Attributes

- accountExpires (user) [LargeInteger]
- accountNameHistory (group) [String]
- accountNameHistory (user) [String]
- aCSPolicyName (user) [String]
- adminCount (group) [Integer]
- adminCount (user) [Integer]
- adminDescription (group) [String]
- adminDescription (user) [String]
- adminDisplayName (group) [String]
- adminDisplayName (user) [String]
- altSecurityIdentities (group) [String]
- altSecurityIdentities (user) [String]

Selected Attributes

- extensionAttribute10 (user) [String]
- extensionAttribute12 (user) [String]

Previous Next

You create a user named User1 in Active Directory as shown in the following exhibit.

For each of the following statements, select Yes if the statement is true. Otherwise, select No. NOTE: Each correct selection is worth one point.

A. Mastered
B. Not Mastered

Answer: A

Explanation:

NEW QUESTION 14

- (Exam Topic 1)

Your company has a Microsoft 365 subscription. All identities are managed in the cloud. The company purchases a new domain name.

Your company has a Microsoft 365 subscription. All identities are managed in the cloud. The company purchases a new domain name. You need to ensure that all new mailboxes use the new domain as their primary email address. What are two possible ways to achieve the goal? Each correct answer presents a complete solution. NOTE: Each correct selection is worth one point.

- From Microsoft Exchange Online PowerShell, run the Update-EmailAddressPolicy policy command.
- From the Exchange admin center, click mail flow, and then configure the email address policies.
- From the Microsoft 365 admin center, click Setup, and then configure the domains.
- From Microsoft Exchange Online PowerShell, run the Set-EmailAddressPolicy policy command.
- From the Azure Active Directory admin center, configure the custom domain names.

Answer: BD

NEW QUESTION 15

- (Exam Topic 1)

Your network contains two Active Directory forests. Each forest contains two domains. All client computers run Windows 10 and are domain-joined.

You plan to configure Hybrid Azure AD join for the computers. You create Microsoft Azure Active Directory (Azure AD) tenant.

You need to ensure that the computers can discover the Azure AD tenant. What should you create?

- A. a new computer account for each computer
- B. a new service connection point (SCP) for each domain
- C. a new trust relationship for each forest
- D. a new service connection point (SCP) for each forest

Answer: D

Explanation:

References:

<https://docs.microsoft.com/en-us/azure/active-directory/devices/hybrid-azuread-join-manual>

NEW QUESTION 18

- (Exam Topic 1)

Your company has an on-premises Microsoft Exchange Server 2013 organization. The company has 100 users.

The company purchases Microsoft 365 and plans to move its entire.- infrastructure to the cloud.

The company does NOT plan to sync the on-premises Active Directory domain to Microsoft Azure Active Directory (Azure AD).

You need to recommend which type of migration to use to move all email messages, contacts, and calendar items to Exchange Online.

What should you recommend?

- A. cutover migration
- B. IMAP migration
- C. remote move migration
- D. staged migration

Answer: A

Explanation:

References:

<https://docs.microsoft.com/en-us/exchange/mailbox-migration/cutover-migration-to-office-365>

NEW QUESTION 20

- (Exam Topic 1)

Note: This question is part of a series of questions that present the same scenario. Each question in the series contains a unique solution that might meet the stated goals. Some question sets might have more than one correct solution, while others might not have a correct solution.

After you answer a question in this section, you will NOT be able to return to it. As a result these questions will not appear in the review screen.

Your company has a main office and three branch offices. All the branch offices connect to the main office by using a WAN link. The main office has a high-speed Internet connection. All the branch offices connect to the Internet by using the main office connection.

Users use Microsoft Outlook 2016 to connect to 4 Microsoft Exchange Server mailbox hosted in the main office.

The users report that when the WAN link in their office becomes unavailable, they cannot access their mailbox.

You create a Microsoft 365 subscription, and then migrate all the user data to Microsoft 365.

You need to ensure that all the users can continue to use Outlook to receive email messages if a WAN link fails.

Solution: For each device, you configure an additional Outlook profile that uses IMAP. Does this meet the goal?

- A. Yes
- B. NO

Answer: B

NEW QUESTION 22

- (Exam Topic 1)

You have a Microsoft 365 subscription.

You need to prevent phishing email messages from being delivered to your organization. What should you do?

- A. From the Exchange admin center, create an anti-malware policy.
- B. From Security & Compliance, create a DLP policy.
- C. From Security & Compliance, create a new threat management policy.
- D. From the Exchange admin center, create a spam filter policy.

Answer: C

Explanation:

References:

<https://docs.microsoft.com/en-us/office365/securitycompliance/set-up-anti-phishing-policies>

NEW QUESTION 27

- (Exam Topic 1)

Your company has a Microsoft Azure Active Directory (Azure AD) tenant named contoso.onmicrosoft.com that contains a user named User1.

You suspect that an imposter is signing in to Azure AD by using the credentials of User1.

You need to ensure that an administrator named Admin1 can view all the sign in details of User 1 from the

past 24 hours.

To which three roles should you add Admin1? Each correct answer presents a complete solution. NOTE: Each correct selection is worth one point.

- A. Security administrator
- B. Password administrator
- C. User administrator
- D. Compliance administrator

Answer: ABC

NEW QUESTION 28

- (Exam Topic 1)

You have several Microsoft SharePoint document libraries in your on-premises environment. You have a Microsoft 365 tenant that has directory synchronization implemented.

You plan to move all the document libraries to SharePoint Online.

You need to recommend a migration strategy for the document libraries.

Which three actions should you perform in sequence? To answer, move the appropriate actions from the list of actions to the answer area and arrange them in the correct order.

Actions

Use the SharePoint Migration Tool to migrate the SharePoint data.

Create new SharePoint sites.

Run azcopy.exe to migrate the SharePoint data.

Create a Microsoft Azure Storage account.

Create new SharePoint libraries.

Answer Area

- A. Mastered
- B. Not Mastered

Answer: A

Explanation:

References:

<https://docs.microsoft.com/en-us/sharepointmigration/how-to-use-the-sharepoint-migration-tool>

NEW QUESTION 31

- (Exam Topic 1)

You recently migrated your on-premises email solution to Microsoft Exchange Online and are evaluating which licenses to purchase.

You want the members of two groups named IT and Managers to be able to use the features shown in the following table.

Feature	Available to
Microsoft Azure Active Directory (Azure AD) conditional access	IT group, Managers group
Microsoft Azure Active Directory (Azure AD) Privileged Identity Management	IT group

The IT group contains 50 users. The Managers group contains 200 users.

You need to recommend which licenses must be purchased for the planned solution. The solution must minimize licensing costs.

Which licenses should you recommend?

- A. 250 Microsoft 365 E3 only
- B. 50 Microsoft 365 E 3 and 200 Microsoft 365 E5
- C. 250 Microsoft 365 E5 only
- D. 200 Microsoft 365 E3 and 50 Microsoft 365 E5

Answer: D

NEW QUESTION 34

- (Exam Topic 1)

Your network contains an Active Directory domain named contoso.com. You have a Microsoft 365 subscription.

You have a Microsoft Azure Active Directory (Azure AD) tenant named contoso.onmicrosoft.com. You implement directory synchronization.

The developers at your company plan to build an app named App1. App1 will connect to the Microsoft Graph API to provide access to several Microsoft Office 365 services.

You need to provide the URI for the authorization endpoint that App1 must use. What should you provide?

- A. <https://login.microsoftonline.com/>
- B. <https://contoso.com/contoso.onmicrosoft.com/app1>
- C. <https://login.microsoftonline.com/contoso.onmicrosoft.com/>

D. <https://myapps.microsoft.com>

Answer: C

NEW QUESTION 37

- (Exam Topic 1)

You have a Microsoft 365 Enterprise E5 subscription.

You need to enforce multi-factor authentication on all cloud-based applications for the users in the finance department.

What should you do?

- A. Create an activity policy.
- B. Create a Sign-in risk policy.
- C. Create a session policy.
- D. Create an app permission policy.

Answer: B

Explanation:

References:

<https://docs.microsoft.com/en-us/azure/active-directory/identity-protection/howto-sign-in-risk-policy>

NEW QUESTION 42

- (Exam Topic 1)

Your company has a Microsoft Azure Active Directory (Azure AD) tenant named contoso.com that includes the users shown in the following table.

Name	Usage location	Membership
User1	United States	Group1, Group2
User2	<i>Not applicable</i>	Group2
User3	<i>Not applicable</i>	Group1
User4	Canada	Group1

Group2 is a member of Group1.

You assign a Microsoft Office 365 Enterprise E3 license to Group1. You need to identify how many Office 365 E3 licenses are assigned. What should you identify?

- A. 1
- B. 2
- C. 3
- D. 4

Answer: C

NEW QUESTION 45

- (Exam Topic 1)

You have a Microsoft 365 subscription.

Your company deploys an Active Directory Federation Services (AD FS) solution. You need to configure the environment to audit AD FS user authentication.

Which two actions should you perform? Each correct answer presents part of the solution. NOTE: Each correct selection is worth one point.

- A. From all the AD FS servers, run `audltpol.exe`.
- B. From all the domain controllers, run the `set-AdminAuditLogConfig` cmdlet and specify the `-LogiLevel` parameter.
- C. On a domain controller install Azure AD Connect Health for AD DS.
- D. From the Azure AD Connect server, run the `Register-AzureADConnectHealthSyncAgent` cmdlet.
- E. On a server, install Azure AD Connect Health (or AD FS).

Answer: DE

NEW QUESTION 46

- (Exam Topic 1)

You have an on-premises Microsoft SharePoint Server 2016 environment. You create a Microsoft 365 tenant.

You need to migrate some of the SharePoint sites to SharePoint Online. The solution must meet the following requirements:

- ▶ Microsoft OneDrive sites must redirect users to online content.
- ▶ Users must be able to follow both on-premises and cloud-based sites.
- ▶ Users must have a single SharePoint profile for both on-premises and on the cloud.

When users search for a document by using keywords, the results must include online and on-premises results. From the SharePoint Hybrid Configuration Wizard, you select the following features:

- ▶ Hybrid business to business (B2B) sites
- ▶ Hybrid OneDrive
- ▶ Hybrid Search

Which two requirements are met by using the SharePoint Hybrid Configuration Wizard features? Each correct answer presents a complete solution.

NOTE: Each correct selection is worth one point.

- A. Users must have a single SharePoint profile for both on-premises and on the cloud.
- B. OneDrive sites must redirect users to online content.
- C. Users must be able to follow both on-premises and cloud-based sites.
- D. When users search for a document by using keywords, the results must include online and on-premises results.

Answer: BD

NEW QUESTION 51

- (Exam Topic 1)

You have a Microsoft 365 subscription and a Microsoft Azure Active Directory (Azure AD) tenant named contoso.com. Contoso.com contains the users shown in the following table.

Name	Type	Role
User1	Member	None
User2	Member	Security administrator, Guest inviter
User3	Member	User administrator
User4	Guest	None

Contoso.com is configured as shown in the following exhibit.

You need to ensure that guest users can be created in the tenant. Which setting should you modify?

- A. Guests can invite.
- B. Guest users permissions are limited.
- C. Members can invite.
- D. Admins and users in the guest inviter role can invite.
- E. Deny invitations to the specified domains

Answer: D

Explanation:

References:

<https://docs.microsoft.com/en-us/azure/active-directory/b2b/delegate-invitations> <https://docs.microsoft.com/en-us/azure/active-directory/fundamentals/users-default-permissions>

NEW QUESTION 56

- (Exam Topic 1)

Your Network contains an on-premises Active Directory domain named contoso.local. The domain contains five domain controllers.

Your company purchases Microsoft 365 and creates a Microsoft Anne Active Directory (Azure AD) tenant named .contoso.onmicrosoft.com.

You plan to implement pass-through authentication.

You need to prepare the environment for the planned implementation of pass-through authentication. Which three actions should you perform? Each correct answer presents part of the solution.

NOTE: Each correct selection is worth one point.

- A. Modify the email address attribute for each user account.
- B. From the Azure portal, add a custom domain name.
- C. From Active Directory Domains and Trusts, add a UPN suffix.
- D. Modify the User logon name for each user account.
- E. From the Azure portal, configure an authentication method.
- F. From a domain controller, install an authentication Agent.

Answer: BCD

NEW QUESTION 58

- (Exam Topic 1)

Your company has a Microsoft 365 subscription that has multi-factor authentication configured for all users. Users on the network report that they are prompted for multi-factor authentication multiple times a day.

You need to reduce the number of times the users are prompted for multi-factor authentication on their company-owned devices. What should you do?

- A. Enable the multi-factor authentication trusted IPs setting, and then verify each device as a trusted device.
- B. Enable the remember multi-factor authentication setting, and then verify each device as a trusted device.
- C. Enable the multi-factor authentication trusted IPs setting, and then join all client computers to Microsoft Azure Active Directory (Azure AD).
- D. Enable the remember multi-factor authentication setting, and then join all client computers to Microsoft Azure Active Directory (Azure AD).

Answer: B

Explanation:

References:

<https://docs.microsoft.com/en-us/azure/active-directory/authentication/howto-mfa-mfasettings>

NEW QUESTION 63

- (Exam Topic 1)

You have a Microsoft 365 subscription that contains several Microsoft SharePoint Online sites. You discover that users from your company can invite external users to access files on the SharePoint sites. You need to ensure that the company users can invite only authenticated guest users to the sites. What should you do?

- A. From the Microsoft 365 admin center, configure a partner relationship.
- B. From SharePoint Online Management Shell, run the set-SPOSite cmdlet.
- C. From the Azure Active Directory admin center, configure a conditional access policy.
- D. From the SharePoint admin center, configure the sharing settings.

Answer: D

NEW QUESTION 64

- (Exam Topic 1)

Your company has an on premises Microsoft Exchange Server 2016 organization and a Microsoft 365 Enterprise subscription. You plan to migrate mailboxes and groups to Exchange Online.

You start a new migration batch.

Users report low performance when they use the on premises Exchange Server organization. You discover that the migration is causing the slow performance.

You need to reduce the impact of the mailbox migration on the end-users. What should you do?

- A. Create a mail flow rule.
- B. Configure back pressure
- C. Modify the migration endpoint setting
- D. Create a throttling policy.

Answer: C

Explanation:

You can reduce the maximum number of concurrent mailbox migrations.

NEW QUESTION 69

- (Exam Topic 1)

You have a Microsoft 365 subscription.

A new corporate security policy states that you must automatically send DLP incident reports to the users in the legal department.

You need to schedule the email delivery of the reports. The solution must ensure that the reports are sent as frequently as possible.

How frequently can you share the reports?

- A. hourly
- B. monthly
- C. weekly
- D. daily

Answer: C

NEW QUESTION 71

- (Exam Topic 1)

Your company has a Microsoft 365 subscription.

You upload several archive PST files to Microsoft 365 by using the Security & Compliance admin center. A month later, you attempt to run an import job for the PST files.

You discover that the PST files were deleted from Microsoft 365.

What is the most likely cause of the files being deleted? More than one answer choice may achieve the goal. Select the BEST answer.

- A. The PST files were corrupted and deleted by Microsoft 365 security features.
- B. PST files are deleted automatically from Microsoft 365 after 30 days.
- C. The size of the PST files exceeded a storage quota and caused the files to be deleted.
- D. Another administrator deleted the PST files.

Answer: B

Explanation:

References:

<https://docs.microsoft.com/en-us/office365/securitycompliance/faqimporting-pst-files-to-office-365>

NEW QUESTION 75

- (Exam Topic 1)

You create a Microsoft 365 Enterprise subscription. You assign licenses for all products to all users.

You need to ensure that all Microsoft Office 365 ProPlus installations occur from a network share. The solution must prevent the users from installing Office 365 ProPlus from the Internet.

Which three actions should you perform? Each correct answer presents part of the solution. NOTE: Each correct selection is worth one point.

- A. From your computer, run setup.exe /download downloadconfig.xml.
- B. Create an XML download file.
- C. From the Microsoft 365 admin center, deactivate the Office 365 licenses for all the users.
- D. From each client computer, run setup.exe /configure installconfig.xml.
- E. From the Microsoft 365 admin center, configure the Software download settings.

Answer: BDE

Explanation:

References:

<https://docs.microsoft.com/en-us/deployoffice/overview-of-the-office-2016-deployment-tool#download-the-inst>

NEW QUESTION 78

- (Exam Topic 1)

Your network contain*, an on-premises Active Directory forest.

You are evaluating the implementation of Microsoft 365 and the deployment of authentication strategy. You need to recommend an authentication strategy that meets the following requirements:

- Allows users to sign in by using smart card-based certificates
- Allows users to connect to on premises and Microsoft 365 services by using SSO Which authentication strategy should you recommend?

- A. password hash synchronization and seamless SSO
- B. federation with Active Directory Federation Services (AD FS)
- C. pass-through authentication and seamless SSO

Answer: B

Explanation:

References:

<https://docs.microsoft.com/en-us/azure/security/azure-ad-choose-authn>

NEW QUESTION 79

- (Exam Topic 1)

Your network contains three Active Directory forests.

You create a Microsoft Azure Active Directory (Azure AD) tenant. You plan to sync the on premises Active Directory (Azure AD).

You need to recommend a synchronization solution. The solution must ensure that the synchronization can complete successfully and as quickly as possible if a single server fails.

What should you include in the recommendation?

- A. Three Azure AD Connect sync servers and three Azure AD Connect sync servers in staging mode
- B. One Azure AD Connect sync servers one Azure AD Connect sync servers in staging mode
- C. Three Azure AD Connect sync servers and one Azure AD Connect sync servers in staging mode
- D. six Azure AD Connect sync servers and three Azure AD Connect sync servers in staging mode

Answer: B

NEW QUESTION 82

- (Exam Topic 1)

Note: This question it part of a series of questions that present the same scenario. Cacti question in the series contains a unique solution that might meet the stated goals. Some question sets might have more than one correct solution, while others might not have a correct solution.

After you answer a question in this section, you will NOT be able to return to it. As a result, these questions will not appear in the review screen.

Your company has a Microsoft Office 36S tenant.

You suspect that several Office 365 features were recently updated.

You need to view a last of the features that were recently updated in the tenant. Solution: You use Dashboard in Security & Compliance.

Does this meet the goal?

- A. Yes
- B. NO

Answer: B

NEW QUESTION 85

- (Exam Topic 1)

Your company has on-premises servers and a Microsoft Azure Active Directory (Azure AD) tenant. Several months ago, the Azure AD Connect Health agent was installed on all the servers.

You review the health status of all the servers regularly.

Recently, you attempted to view the health status of a server named Server1 and discovered that the server is NOT listed on the Azure Active Directory Connect Servers list.

You suspect that another administrator removed Server1 from the list. You need to ensure that you can view the health status of Server1.

What are two possible ways to achieve the goal? Each correct answer presents a complete solution. NOTE: Each correct selection is worth one point.

- A. From Windows PowerShell, run the Register-AzureADConnectHealthSyncAgent cmdlet.
- B. From Azure Cloud shell, run the Connect-AzureAD cmdlet.
- C. From Server1, change the Azure AD Connect Health services Startup type to Automatic (Delayed Start).
- D. From Server1, change the Azure AD Connect Health services Startup type to Automatic.
- E. From Server1, reinstall the Azure AD Connect Health agent.

Answer: AE

NEW QUESTION 87

- (Exam Topic 2)

Note: This question is part of a series of questions that present the same scenario. Each question in the series contains a unique solution that might meet the stated goals. Some question sets might have more than one correct solution, while others might not have a correct solution.

After you answer a question in this section, you will NOT be able to return to it. As a result, these questions will not appear in the review screen.

You need to assign User2 the required roles to meet the security requirements. Solution: From the Office 365 admin center, you assign User2 the Security Reader role. From the Exchange admin center, you assign User2 the Help Desk role.

Does this meet the goal?

- A. Yes
- B. NO

Answer: B

NEW QUESTION 91

- (Exam Topic 2)

You need to Add the custom domain name* to Office 365 K> support the planned changes as quickly as possible.

What should you create to verify the domain names successfully?

- A. three alias (CNAME) record
- B. one text (TXT) record
- C. one alias (CNAME) record
- D. three text (TXT) record

Answer: D

NEW QUESTION 93

- (Exam Topic 2)

To which Azure AD role should you add User4 to meet the security requirement?

- A. Password administrator
- B. Global administrator
- C. Security administrator
- D. Privileged role administrator

Answer: B

NEW QUESTION 95

- (Exam Topic 2)

You need to meet the security requirements for User3. The solution must meet the technical requirements. What should you do? To answer, select the appropriate options in the answer area.

NOTE: Each correct selection is worth one point.

Tool to use to add User3 to the role:

	▼
the Azure portal	
the Exchange admin center	
the Microsoft 365 admin center	
the Security & Compliance admin center	

Role to assign to User3:

	▼
Cloud application administrator	
Global administrator	
Organization Management	
Security Administrator	

- A. Mastered
- B. Not Mastered

Answer: A

Explanation:

References:

<https://docs.microsoft.com/en-us/office365/SecurityCompliance/eop/feature-permissions-in-eop>

NEW QUESTION 98

- (Exam Topic 2)

Note: This question is part of a series of questions that present the same scenario. Each question in the series contains a unique solution that might meet the stated goals. Some question sets might have more than one correct solution, while others might not have a correct solution.

After you answer a question in this section, you will NOT be able to return to it. As a result, these questions will not appear in the review screen.

You need to assign User2 the required roles to meet the security requirements.

Solution: From the Office 365 admin center, you assign User2 the Security Reader role. From the Exchange admin center, you assign User2 the Compliance Management role.

Does this meet the goal?

- A. Yes
- B. NO

Answer: A

NEW QUESTION 102

- (Exam Topic 2)

Note This question is part of a series of questions that present the same scenario. Each question in the series contains a unique solution that might meet the stated goals. Some question sets might have more than one correct solution, while others might not have a correct solution.

After you answer a question in this section, you will NOT be able to return to it. As a result, these questions will not appear in the review screen.

You need to assign User2 the required roles to meet the security requirements.

Solution: From the Office 365 admin center, you assign User2 the Security Administrator role. From the Exchange admin center, you add User2 to the View-Only Management role.

Does this meet the goal?

- A. Yes
- B. NO

Answer: B

NEW QUESTION 106

- (Exam Topic 3)

You need to ensure that all the sales department users can authenticate successfully during Project1and Project2.

Which authentication strategy should you implement for the pilot projects?

- A. password hash synchronization and seamless SSO
- B. pass-through authentication
- C. password hash synchronization
- D. pass-through authentication and seamless SSO

Answer: A

Explanation:

References:

<https://docs.microsoft.com/en-us/azure/security/azure-ad-choose-authn>

NEW QUESTION 109

- (Exam Topic 3)

You need to prepare the environment for Project1. You create the Microsoft 365 tenant.

Which three actions should you perform in sequence next? To answer, move the appropriate actions from the list of actions to the answer area and arrange them in the correct order.

Actions

Configure the required DNS records and verify fabrikam.com as a custom domain.

Implement directory synchronization.

Create a Microsoft Azure Active Directory (Azure AD) tenant.

Modify the Exchange ActiveSync Access Settings.

Run the Hybrid Configuration wizard.

Answer Area

- A. Mastered
- B. Not Mastered

Answer: A

Explanation:

Actions

Configure the required DNS records and verify fabrikam.com as a custom domain.

Implement directory synchronization.

Create a Microsoft Azure Active Directory (Azure AD) tenant.

Modify the Exchange ActiveSync Access Settings.

Run the Hybrid Configuration wizard.

Answer Area

Create a Microsoft Azure Active Directory (Azure AD) tenant.

Configure the required DNS records and verify fabrikam.com as a custom domain.

Implement directory synchronization.

NEW QUESTION 110

- (Exam Topic 3)

Which role should you assign to User1?

- A. Security Administrator
- B. Records Management
- C. Security Reader
- D. Hygiene Management

Answer: C

NEW QUESTION 112

- (Exam Topic 3)

You are evaluating the required processes for Project1.

You need to recommend which DNS record must be created before you begin the project. Which DNS record should you recommend?

- A. mail exchanger (MX)
- B. alias (CNAME)
- C. host (A)
- D. host (AAA)

Answer: A

NEW QUESTION 113

.....

Thank You for Trying Our Product

* 100% Pass or Money Back

All our products come with a 90-day Money Back Guarantee.

* One year free update

You can enjoy free update one year. 24x7 online support.

* Trusted by Millions

We currently serve more than 30,000,000 customers.

* Shop Securely

All transactions are protected by VeriSign!

100% Pass Your MS-100 Exam with Our Prep Materials Via below:

<https://www.certleader.com/MS-100-dumps.html>