

Exam Questions MS-500

Microsoft 365 Security Administrator

<https://www.2passeasy.com/dumps/MS-500/>



NEW QUESTION 1

You need to recommend a solution for the user administrators that meets the security requirements for auditing. Which blade should you recommend using from the Azure Active Directory admin center?

- A. Sign-ins
- B. Azure AD Identity Protection
- C. Authentication methods
- D. Access review

Answer: A

Explanation:

References:

<https://docs.microsoft.com/en-us/azure/active-directory/reports-monitoring/concept-sign-ins>

NEW QUESTION 2

HOTSPOT

You need to recommend an email malware solution that meets the security requirements.

What should you include in the recommendation? To answer, select the appropriate options in the answer area.

NOTE: Each correct selection is worth one point.

Policy to create:

ATP safe attachments	✓
ATP Safe Links	
Anti-spam	
Anti-malware	

Option to configure:

Block	✓
Replace	
Dynamic Delivery	
Monitor	
Quarantine message	

- A. Mastered
- B. Not Mastered

Answer: A

Explanation:

Policy to create:

ATP safe attachments	✓
ATP Safe Links	
Anti-spam	
Anti-malware	

Option to configure:

Block	✓
Replace	
Dynamic Delivery	
Monitor	
Quarantine message	

NEW QUESTION 3

You need to resolve the issue that targets the automated email messages to the IT team. Which tool should you run first?

- A. Synchronization Service Manager
- B. Azure AD Connect wizard
- C. Synchronization Rules Editor
- D. IdFix

Answer: B

Explanation:

References:

<https://docs.microsoft.com/en-us/office365/enterprise/fix-problems-with-directory-synchronization>

Case Study: 2 Litware, Inc Overview

Litware, Inc. is a financial company that has 1,000 users in its main office in Chicago and 100 users in a branch office in San Francisco.

Existing Environment

Internal Network Infrastructure

The network contains a single domain forest. The forest functional level is Windows Server 2016. Users are subject to sign-in hour restrictions as defined in Active Directory.

The network has the IP address range shown in the following table.

Location	IP address range
Chicago office internal network	192.168.0.0/20
Chicago office perimeter network	172.16.0.0/24
Chicago office external network	131.107.83.0/28
San Francisco office internal network	192.168.16.0/20
San Francisco office perimeter network	172.16.16.0/24
San Francisco office external network	131.107.16.218/32

The offices connect by using Multiprotocol Label Switching (MPLS).

The following operating systems are used on the network:

- Windows Server 2016
- Windows 10 Enterprise
- Windows 8.1 Enterprise

The internal network contains the systems shown in the following table.

Office	Name	Configuration
Chicago	DC1	Domain controller
Chicago	DC2	Domain controller
San Francisco	DC3	Domain controller
Chicago	Server1	SIEM-server

Litware uses a third-party email system.

Cloud Infrastructure

Litware recently purchased Microsoft 365 subscription licenses for all users.

Microsoft Azure Active Directory (Azure AD) Connect is installed and uses the default authentication settings. User accounts are not yet synced to Azure AD.

You have the Microsoft 365 users and groups shown in the following table.

Name	Object type	Description
Group 1	Security group	A group for testing Azure and Microsoft 365 functionality
User1	User	A test user who is a member of Group1
User2	User	A test user who is a member of Group1
User3	User	A test user who is a member of Group1
User4	User	An administrator
Guest1	Guest user	A guest user

Planned Changes

Litware plans to implement the following changes: Migrate the email system to Microsoft Exchange Online Implement Azure AD Privileged Identity Management

Security Requirements

Litware identifies the following security requirements:

- Create a group named Group2 that will include all the Azure AD user accounts. Group2 will be used to provide limited access to Windows Analytics
- Create a group named Group3 that will be used to apply Azure Information Protection policies to pilot users. Group3 must only contain user accounts
- Use Azure Advanced Threat Protection (ATP) to detect any security threats that target the forest
- Prevent users locked out of Active Directory from signing in to Azure AD and Active Directory
- Implement a permanent eligible assignment of the Compliance administrator role for User1
- Integrate Windows Defender and Windows Defender ATP on domain-joined servers
- Prevent access to Azure resources for the guest user accounts by default
- Ensure that all domain-joined computers are registered to Azure AD

Multi-factor authentication (MFA) Requirements

Security features of Microsoft Office 365 and Azure will be tested by using pilot Azure user accounts. You identify the following requirements for testing MFA.

Pilot users must use MFA unless they are signing in from the internal network of the Chicago office. MFA must NOT be used on the Chicago office internal network.

If an authentication attempt is suspicious, MFA must be used, regardless of the user location Any disruption of legitimate authentication attempts must be minimized

General Requirements

Litware want to minimize the deployment of additional servers and services in the Active Directory forest.

NEW QUESTION 4

Which IP address space should you include in the MFA configuration?

- A. 131.107.83.0/28
- B. 192.168.16.0/20
- C. 172.16.0.0/24
- D. 192.168.0.0/20

Answer: B

NEW QUESTION 5

HOTSPOT

Which users are members of ADGroup1 and ADGroup2? To answer, select the appropriate options in the answer area.

NOTE: Each correct selection is worth one point.

ADGroup1:	None	v
	User1 and User2 only	
	User2 and User4 only	
	User3 and User4 only	
	User1, User2, User3, and User4	

ADGroup2:	None	v
	User1 and User2 only	
	User2 and User4 only	
	User3 and User4 only	
	User1, User2, User3, and User4	

- A. Mastered
- B. Not Mastered

Answer: A

Explanation:

Reference:

<https://docs.microsoft.com/en-us/azure/active-directory/users-groups-roles/groups-dynamic-membership#supported-values>

NEW QUESTION 6

Which user passwords will User2 be prevented from resetting?

- A. User6 and User7
- B. User4 and User6
- C. User4 only
- D. User7 and User8
- E. User8 only

Answer: C

NEW QUESTION 7

HOTSPOT

You are evaluating which devices are compliant in Intune.

For each of the following statements, select Yes if the statement is true. Otherwise, select No. NOTE: Each correct selection is worth one point.

Statements	Yes	No
Device2 is compliant.	<input type="radio"/>	<input type="radio"/>
Device5 is compliant.	<input type="radio"/>	<input type="radio"/>
Device6 is compliant.	<input type="radio"/>	<input type="radio"/>

- A. Mastered
- B. Not Mastered

Answer: A

Explanation:

Statements	Yes	No
Device2 is compliant.	<input checked="" type="radio"/>	<input type="radio"/>
Device5 is compliant.	<input type="radio"/>	<input checked="" type="radio"/>
Device6 is compliant.	<input checked="" type="radio"/>	<input type="radio"/>

NEW QUESTION 8

HOTSPOT

Which policies apply to which devices? To answer, select the appropriate options in the answer area. NOTE: Each correct selection is worth one point.

Answer Area

DevicePolicy1:	<div>None</div> <div>Device1 only</div> <div>Device3 only</div> <div>Device2 and Device3 only</div> <div>Device1 and Device3 only</div> <div>Device1, Device2, and Device3</div>
DevicePolicy2:	<div>None</div> <div>Device4 only</div> <div>Device2 and Device4 only</div> <div>Device2, Device3, and Device 4 only</div>

- A. Mastered
- B. Not Mastered

Answer: A

Explanation:

Answer Area

DevicePolicy1:	<div>None</div> <div>Device1 only</div> <div>Device3 only</div> <div>Device2 and Device3 only</div> <div>Device1 and Device3 only</div> <div>Device1, Device2, and Device3</div>
DevicePolicy2:	<div>None</div> <div>Device4 only</div> <div>Device2 and Device4 only</div> <div>Device2, Device3, and Device 4 only</div>

NEW QUESTION 9

Note: This question is part of series of questions that present the same scenario. Each question in the series contains a unique solution that might meet the stated goals. Some question sets might have more than one correct solution, while others might not have a correct solution.

After you answer a question in this section, you will NOT be able to return to it. As a result, these questions will not appear in the review screen.

You have a Microsoft 365 E5 subscription that is associated to a Microsoft Azure Active Directory (Azure AD) tenant named contoso.com.

You use Active Directory Federation Services (AD FS) to federate on-premises Active Directory and the tenant. Azure AD Connect has the following settings:

- Source Anchor: objectGUID
- Password Hash Synchronization: Disabled
- Password writeback: Disabled
- Directory extension attribute sync: Disabled
- Azure AD app and attribute filtering: Disabled
- Exchange hybrid deployment: Disabled
- User writeback: Disabled

You need to ensure that you can use leaked credentials detection in Azure AD Identity Protection. Solution: You modify the Password Hash Synchronization settings.

Does that meet the goal?

- A. Yes
- B. No

Answer: A

Explanation:

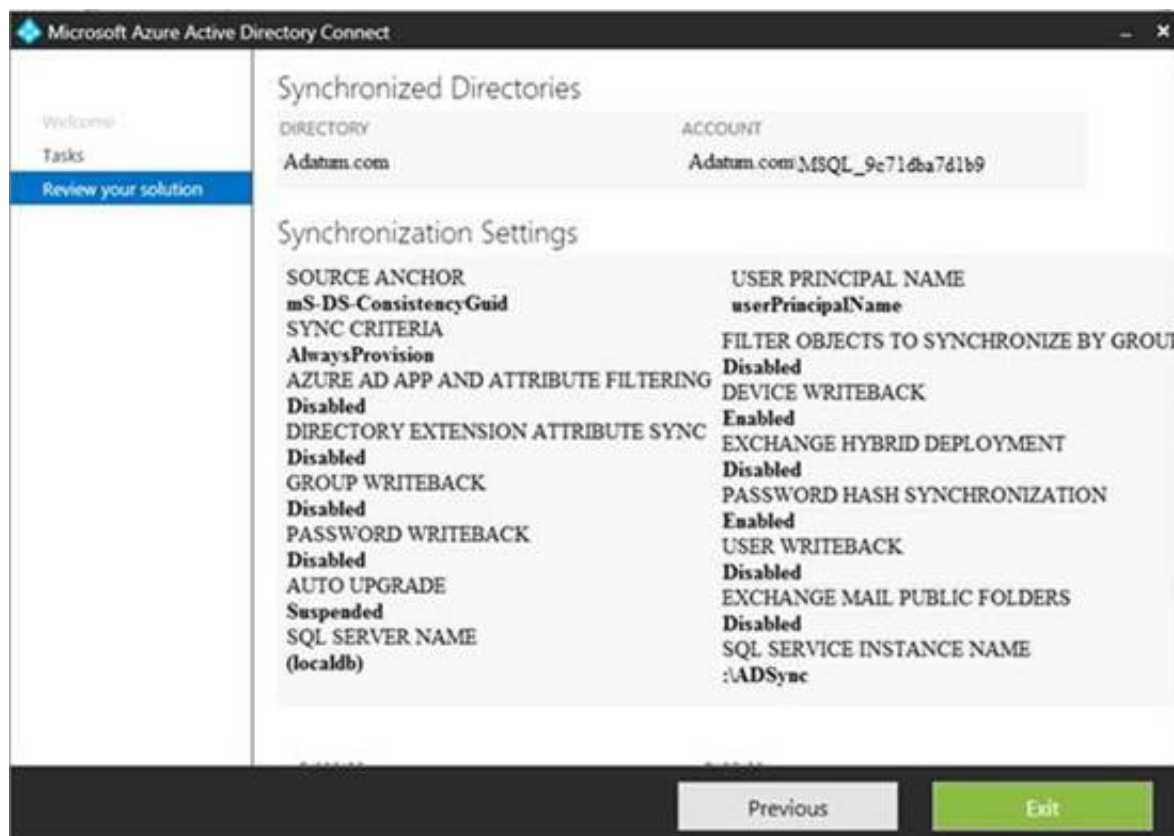
References:

<https://docs.microsoft.com/en-us/azure/security/azure-ad-secure-steps>

NEW QUESTION 10

HOTSPOT

You configure Microsoft Azure Active Directory (Azure AD) Connect as shown in the following exhibit.



Use the drop-down menus to select the answer choice that completes each statement based on the information presented in the graphic.

NOTE: Each correct selection is worth one point.

If you reset a password in Azure AD, the password will [answer choice].

be overwritten	✓
be synced to Active Directory	
be subject to the Active Directory password policy	

If you join a computer to Azure AD, [answer choice].

an object will be provisioned in the Computers container	✓
an object will be provisioned in the RegisteredDevices container	
the device object in Azure will be deleted during synchronization	

- A. Mastered
- B. Not Mastered

Answer: A

Explanation:

Reference:

<https://docs.microsoft.com/en-us/azure/active-directory/hybrid/how-to-connect-device-writeback>

NEW QUESTION 10

You have a hybrid Microsoft 365 environment. All computers run Windows 10 and are managed by using Microsoft Intune.

You need to create a Microsoft Azure Active Directory (Azure AD) conditional access policy that will allow only Windows 10 computers marked as compliant to establish a VPN connection to the on-premises network.

What should you do first?

- A. From the Azure Active Directory admin center, create a new certificate
- B. Enable Application Proxy in Azure AD
- C. From Active Directory Administrative Center, create a Dynamic Access Control policy
- D. From the Azure Active Directory admin center, configure authentication methods

Answer: A

Explanation:

Reference:

<https://docs.microsoft.com/en-us/windows-server/remote/remote-access/vpn/ad-ca-vpn-connectivitywindows10>

NEW QUESTION 13

You have a Microsoft 365 subscription.

From the Microsoft 365 admin center, you create a new user. You plan to assign the Reports reader role to the user.

You need to see the permissions of the Reports reader role. Which admin center should you use?

- A. Azure Active Directory
- B. Cloud App Security
- C. Security & Compliance

D. Microsoft 365

Answer: A

NEW QUESTION 18

You have a Microsoft 365 subscription.

You need to ensure that all users who are assigned the Exchange administrator role have multi-factor authentication (MFA) enabled by default.

What should you use to achieve the goal?

- A. Security & Compliance permissions
- B. Microsoft Azure Active Directory (Azure AD) Privileged Identity Management
- C. Microsoft Azure AD group management
- D. Microsoft Office 365 user management

Answer: B

NEW QUESTION 21

You have a Microsoft 365 Enterprise E5 subscription.

You use Windows Defender Advanced Threat Protection (Windows Defender ATP). You plan to use Microsoft Office 365 Attack simulator.

What is a prerequisite for running Attack simulator?

- A. Enable multi-factor authentication (MFA)
- B. Configure Advanced Threat Protection (ATP)
- C. Create a Conditional Access App Control policy for accessing Office 365
- D. Integrate Office 365 Threat Intelligence and Windows Defender ATP

Answer: A

Explanation:

Reference:

<https://docs.microsoft.com/en-us/office365/securitycompliance/attack-simulator>

NEW QUESTION 24

HOTSPOT

Your network contains an Active Directory domain named contoso.com. The domain contains a VPN server named VPN1 that runs Windows Server 2016 and has the Remote Access server role installed. You have a Microsoft Azure subscription.

You are deploying Azure Advanced Threat Protection (ATP).

You install an Azure ATP standalone sensor on a server named Server1 that runs Windows Server 2016.

You need to integrate the VPN and Azure ATP.

What should you do? To answer, select the appropriate options in the answer area. NOTE: Each correct selection is worth one point.

On VPN1:

Configure an authentication provider.	v
Configure an accounting provider.	
Create a connection request policy.	
Create a RADIUS client.	

On Server1, enable the following inbound port:

443	v
1723	
1813	
8080	
8531	

- A. Mastered
- B. Not Mastered

Answer: A

Explanation:

Reference:

<https://docs.microsoft.com/en-us/azure-advanced-threat-protection/install-atp-step6-vpn>

NEW QUESTION 27

HOTSPOT

You have a Microsoft 365 subscription that uses a default domain name of contoso.com. Microsoft Azure Active Directory (Azure AD) contains the users shown in the following table.

Name	Member of
User1	Group1
User2	Group1, Group2
User3	Group3

Microsoft Intune has two devices enrolled as shown in the following table:

Name	Platform
Device1	Android
Device2	Windows 10

Both devices have three apps named App1, App2, and App3 installed.

You create an app protection policy named ProtectionPolicy1 that has the following settings:

- Protected apps: App1
- Exempt apps: App2
- Windows Information Protection mode: Block

You apply ProtectionPolicy1 to Group1 and Group3. You exclude Group2 from ProtectionPolicy1. For each of the following statements, select Yes if the statement is true. Otherwise, select No.

NOTE: Each correct selection is worth one point.

Answer Area

Yes No

From Device1, User1 can copy data from App1 to App3.

☐
☐

From Device2, User1 can copy data from App1 to App2.

☐
☐

From Device2, User1 can copy data from App1 to App3.

☐
☐

A. Mastered

B. Not Mastered

Answer: A

Explanation:

Answer Area

Yes No

From Device1, User1 can copy data from App1 to App3.

☐
☒

From Device2, User1 can copy data from App1 to App2.

☒
☐

From Device2, User1 can copy data from App1 to App3.

☒
☐

NEW QUESTION 32

HOTSPOT

Your company has a Microsoft 365 subscription that contains the users shown in the following table.

Name	Member of
User1	Group1
User2	Group2
User3	Group3

The company implements Windows Defender Advanced Threat Protection (Windows Defender ATP). Windows Defender ATP includes the roles shown in the following table:

Name	Permission	Assigned user group
Role1	View data, Active remediation actions, Alerts investigation	Group1
Role2	View data, Active remediation actions	Group2
Windows Defender ATP administrator (default)	View data, Alerts investigation, Active remediation actions, Manage portal system settings, Manage security settings	Group3

Windows Defender ATP contains the machine groups shown in the following table:

Rank	Machine group	Machine	User access
First	ATPGroup1	Device1	Group1
Last	Ungrouped machines (default)	Device2	Group2

For each of the following statements, select Yes if the statement is true. Otherwise, select No. NOTE: Each correct selection is worth one point.

Statements	Yes	No
User1 can run an antivirus scan on Device1.	<input type="radio"/>	<input type="radio"/>
User2 can collect an investigation package from Device2.	<input type="radio"/>	<input type="radio"/>
User3 can isolate Device1.	<input type="radio"/>	<input type="radio"/>

- A. Mastered
 B. Not Mastered

Answer: A

Explanation:

Statements	Yes	No
User1 can run an antivirus scan on Device1.	<input checked="" type="radio"/>	<input type="radio"/>
User2 can collect an investigation package from Device2.	<input type="radio"/>	<input checked="" type="radio"/>
User3 can isolate Device1.	<input type="radio"/>	<input checked="" type="radio"/>

NEW QUESTION 35

Note: This question is part of series of questions that present the same scenario. Each question in the series contains a unique solution that might meet the stated goals. Some question sets might have more than one correct solution, while others might not have a correct solution.

After you answer a question in this section, you will NOT be able to return to it. As a result, these questions will not appear in the review screen.

You have a Microsoft 365 tenant. You create a label named CompanyConfidential in Microsoft Azure Information Protection.

You add CompanyConfidential to a global policy.

A user protects an email message by using CompanyConfidential and sends the label to several external recipients. The external recipients report that they cannot open the email message.

You need to ensure that the external recipients can open protected email messages sent to them. Solution: You modify the encryption settings of the label.

Does this meet the goal?

- A. Yes
 B. No

Answer: B

NEW QUESTION 38

HOTSPOT

Your network contains an on-premises Active Directory domain named contoso.com. The domain contains the groups shown in the following table.

Name	Type	Email address
Group1	Security Group – Domain Local	Group1@contoso.com
Group2	Security Group – Universal	None
Group3	Distribution Group – Global	None
Group4	Distribution Group – Universal	Group4@contoso.com

The domain is synced to a Microsoft Azure Active Directory (Azure AD) tenant that contains the groups shown in the following table.

Name	Type	Membership type
Group11	Security group	Assigned
Group12	Security group	Dynamic
Group13	Office	Assigned
Group14	Mail-enabled security group	Assigned

You create an Azure Information Protection policy named Policy1. You need to apply Policy1.

To which groups can you apply Policy1? To answer, select the appropriate options in the answer area. NOTE: Each correct selection is worth one point.

On-premises Active Directory groups:

Group4 only	V
Group1 and Group4 only	
Group3 and Group4 only	
Group1, Group3, and Group4 only	
Group1, Group2, Group3, and Group4	

Azure AD groups:

Group13 only	V
Group13 and Group14 only	
Group11 and Group12 only	
Group11, Group13, and Group14 only	
Group11, Group12, Group13, and Group14 only	

- A. Mastered
 B. Not Mastered

Answer: A

Explanation:

Reference:

<https://docs.microsoft.com/en-us/azure/information-protection/prepare>

NEW QUESTION 41

HOTSPOT

You have the Microsoft conditions shown in the following table.

Name	Pattern	Case sensitivity
Condition1	Product1	Off
Condition2	Product2	On

You have the Azure Information Protection labels shown in the following table.

Name	Use condition	Label is applied
Label1	Condition1	Automatically
Label2	Condition2	Automatically

You have the Azure Information Protection policies shown in the following table.

Name	Applies to	Use label	Set the default label
Global	<i>Not applicable</i>	<i>None</i>	None
Policy1	User1	Label1	None
Policy2	User2	Label2	None

For each of the following statements, select Yes if the statement is true. Otherwise, select No.

Statements	Yes	No
If a user types "Product1 and Product2" in a document and saves the document in Microsoft Word, the document will be assigned Label1 sensitivity automatically.	<input type="radio"/>	<input type="radio"/>
If a user types "Product2 and Product1" in a document and saves the document in Microsoft Word, the document will be assigned Label2 sensitivity automatically.	<input type="radio"/>	<input type="radio"/>
If a user types "product2" in a document and save the document in Microsoft Word, the document will be assigned Label2 sensitivity automatically.	<input type="radio"/>	<input type="radio"/>

- A. Mastered
 B. Not Mastered

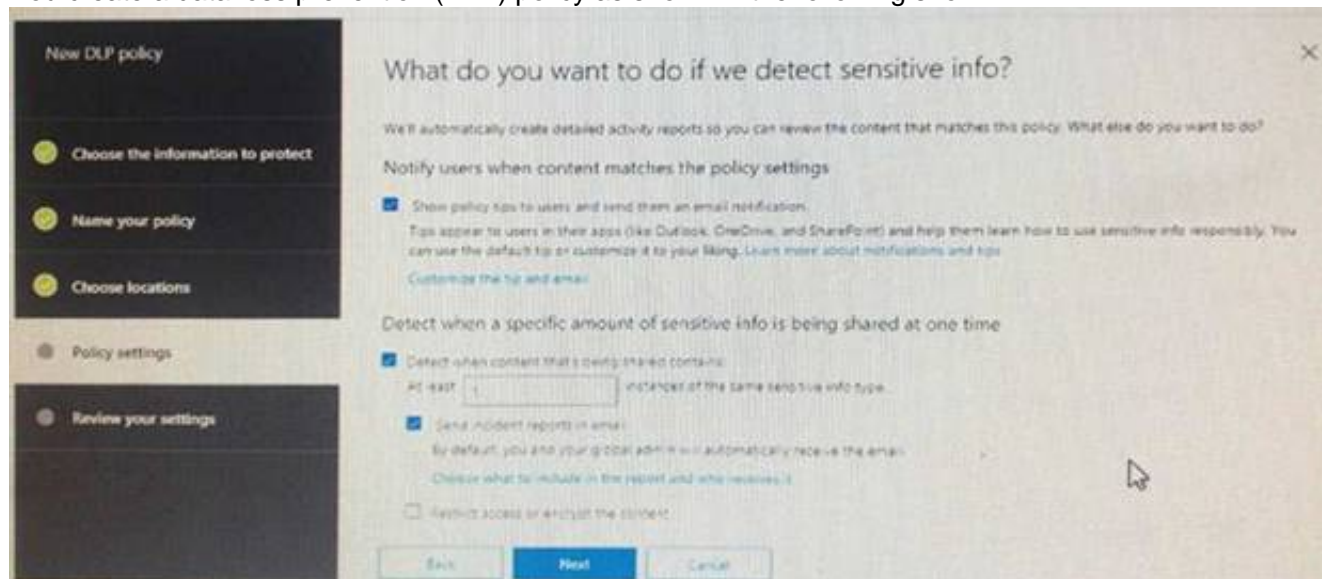
Answer: A

Explanation:

Statements	Yes	No
If a user types "Product1 and Product2" in a document and saves the document in Microsoft Word, the document will be assigned Label1 sensitivity automatically.	<input type="radio"/>	<input checked="" type="radio"/>
If a user types "Product2 and Product1" in a document and saves the document in Microsoft Word, the document will be assigned Label2 sensitivity automatically.	<input checked="" type="radio"/>	<input type="radio"/>
If a user types "product2" in a document and save the document in Microsoft Word, the document will be assigned Label2 sensitivity automatically.	<input type="radio"/>	<input checked="" type="radio"/>

NEW QUESTION 45

You create a data loss prevention (DLP) policy as shown in the following shown:



What is the effect of the policy when a user attempts to send an email messages that contains sensitive information?

- A. The user receives a notification and can send the email message
- B. The user receives a notification and cannot send the email message
- C. The email message is sent without a notification
- D. The email message is blocked silently

Answer: A

Explanation:

<https://docs.microsoft.com/en-us/office365/securitycompliance/data-loss-prevention-policies>

NEW QUESTION 46

You have a Microsoft 365 subscription.

You need to create data loss prevention (DLP) queries in Microsoft SharePoint Online to find sensitive data stored in sites.

Which type of site collection should you create first?

- A. Records Center
- B. Compliance Policy Center
- C. eDiscovery Center
- D. Enterprise Search Center
- E. Document Center

Answer: C

Explanation:

Reference:

<https://support.office.com/en-us/article/overview-of-data-loss-prevention-in-sharepoint-server-2016-80f907bbb944-448d-b83d-8fec4abcc24c>

NEW QUESTION 47

You have a Microsoft 365 subscription. You need to ensure that users can apply retention labels to individual documents in their Microsoft SharePoint libraries.

Which two actions should you perform? Each correct answer presents part of the solution. NOTE: Each correct selection is worth one point.

- A. From the Cloud App Security admin center, create a file policy.
- B. From the SharePoint admin center, modify the Site Settings.
- C. From the SharePoint & Compliance admin center, create a label.
- D. From the SharePoint admin center, modify the records management settings.
- E. From the Security & Compliance admin center, publish a label.

Answer: CE

Explanation:

Reference:

<https://docs.microsoft.com/en-us/office365/securitycompliance/protect-sharepoint-online-files-with-office-365-labels-and-dlp>

NEW QUESTION 51

You have a Microsoft 365 subscription.
You need to enable auditing for all Microsoft Exchange Online users. What should you do?

- A. From the Exchange admin center, create a journal rule
- B. Run the Set-MailboxDatabase cmdlet
- C. Run the Set-Mailbox cmdlet
- D. From the Exchange admin center, create a mail flow message trace rule.

Answer: C

Explanation:

Reference:
<https://docs.microsoft.com/en-us/office365/securitycompliance/enable-mailbox-auditing>

NEW QUESTION 55

HOTSPOT
You view Compliance Manager as shown in the following exhibit.



Use the drop-down menus to select the answer choice that completes each statement based on the information presented in the graphic.
NOTE: Each correct selection is worth one point.

To increase the GDPR Compliance Score for Microsoft Office 365, you must [answer choice].

assign action items	V
review actions	
perform an assessment	
create a service request with Microsoft	

The current GDPR Compliance Score [answer choice].

proves that the organization is non-compliant	V
proves that the organization is compliant	
shows that actions are required to evaluate compliance	

- A. Mastered
- B. Not Mastered

Answer: A

Explanation:

Reference:
<https://docs.microsoft.com/en-us/office365/securitycompliance/meet-data-protection-and-regulatory-reqs-using-microsoft-cloud>

NEW QUESTION 56

You create a label that encrypts email data. Users report that they cannot use the label in Outlook on the web to protect the email messages they send.
You need to ensure that the users can use the new label to protect their email. What should you do?

- A. Modify the priority order of label policies
- B. Wait six hours and ask the users to try again
- C. Create a label policy
- D. Create a new sensitive information type

Answer: B

NEW QUESTION 59

You have a hybrid Microsoft 365 environment.
All computers run Windows 10 Enterprise and have Microsoft Office 365 ProPlus installed. All the computers are joined to Active Directory.
You have a server named Server1 that runs Windows Server 2016. Server1 hosts the telemetry database. You need to prevent private details in the telemetry data from being transmitted to Microsoft.
What should you do?

- A. On Server1, run readinessreportcreator.exe
- B. Configure a registry on Server1

- C. Configure a registry on the computers
D. On the computers, run tdadm.exe

Answer: C

NEW QUESTION 62

HOTSPOT

You have a Microsoft 365 E5 subscription.

Users and device objects are added and removed daily. Users in the sales department frequently change their device.

You need to create three following groups:

Group	Requirement
1	All the devices of users where the Department attributes is set to Sales
2	All the devices where the Department attribute is set to Sales
3	All the devices where the deviceOwnership attribute is set to Company

The solution must minimize administrative effort.

What is the minimum number of groups you should create for each type of membership? To answer, select the appropriate options in the answer area.

NOTE: Each correct selection is worth one point.

Groups that have assigned membership:

	▼
0	
1	
2	
3	

Groups that have dynamic membership:

	▼
0	
1	
2	
3	

- A. Mastered
B. Not Mastered

Answer: A

Explanation:

References:

<https://github.com/MicrosoftDocs/azure-docs/blob/master/articles/active-directory/users-groups-roles/groups-dynamic-membership.md>

NEW QUESTION 64

HOTSPOT

You have a Microsoft Azure Active Directory (Azure AD) tenant named contoso.com that contains the users shown in the following table.

Name	Member	Multi-factor authentication (MFA) status
User1	Group1	Disabled
User2	Group1, Group2	Enabled

You create and enforce an Azure AD Identity Protection user risk policy that has the following settings:

- Assignments: Include Group1, Exclude Group2
- Conditions: Sign in risk of Low and above
- Access: Allow access, Require password change

You need to identify how the policy affects User1 and User2.

What occurs when User1 and User2 sign in from an unfamiliar location? To answer, select the appropriate options in the answer area.

NOTE: Each correct selection is worth one point.

Must change their password:

	▼
User1 only	
User2 only	
Both User1 and User2	
Neither User1 not User2	

Prompted for MFA:

	▼
User1 only	
User2 only	
Both User1 and User2	
Neither User1 not User2	

- A. Mastered
- B. Not Mastered

Answer: A

Explanation:

Must change their password:

	▼
User1 only	
User2 only	
Both User1 and User2	
Neither User1 not User2	

Prompted for MFA:

	▼
User1 only	
User2 only	
Both User1 and User2	
Neither User1 not User2	

NEW QUESTION 66

You have a Microsoft 365 Enterprise E5 subscription.

You use Windows Defender Advanced Threat Protection (Windows Defender ATP).

You need to integrate Microsoft Office 365 Threat Intelligence and Windows Defender ATP. Where should you configure the integration?

- A. From the Microsoft 365 admin center, select Settings, and then select Services & add-ins.
- B. From the Security & Compliance admin center, select Threat management, and then select Explorer.
- C. From the Microsoft 365 admin center, select Reports, and then select Security & Compliance.
- D. From the Security & Compliance admin center, select Threat management and then select Threat tracker.

Answer: B

Explanation:

References:

<https://docs.microsoft.com/en-us/office365/securitycompliance/integrate-office-365-ti-with-wdatp>

NEW QUESTION 70

Your network contains an on-premises Active Directory domain. The domain contains servers that run Windows Server and have advanced auditing enabled.

The security logs of the servers are collected by using a third-party SIEM solution.

You purchase a Microsoft 365 subscription and plan to deploy Azure Advanced Threat Protection (ATP) by using standalone sensors.

You need to ensure that you can detect when sensitive groups are modified and when malicious services are created.

What should you do?

- A. Configure auditing in the Office 365 Security & Compliance center.
- B. Turn off Delayed updates for the Azure ATP sensors.
- C. Modify the Domain synchronizer candidate's settings on the Azure ATP sensors.
- D. Integrate SIEM and Azure ATP.

Answer: C

Explanation:

References:

<https://docs.microsoft.com/en-us/azure-advanced-threat-protection/install-atp-step5>

NEW QUESTION 73

Note: This question is part of a series of questions that present the same scenario. Each question in the series contains a unique solution that might meet the stated goals. Some questions sets might have more than one correct solution, while others might not have a correct solution.
After you answer a question in this section, you will NOT be able to return to it. As a result, these questions will not appear in the review screen.
You have a Microsoft 365 subscription.
You have a user named User1. Several users have full access to the mailbox of User1.
Some email messages sent to User1 appear to have been read and deleted before the user viewed them.
When you search the audit log in Security & Compliance to identify who signed in to the mailbox of User1, the results are blank.
You need to ensure that you can view future sign-ins to the mailbox of User1. You run the Set-AuditConfig -Workload Exchange command.
Does that meet the goal?

- A. Yes
- B. No

Answer: B

Explanation:

References:

<https://docs.microsoft.com/en-us/powershell/module/exchange/policy-and-compliance-audit/set-auditconfig?view=exchange-ps>

NEW QUESTION 74

Note: This question is part of a series of questions that present the same scenario. Each question in the series contains a unique solution that might meet the stated goals. Some questions sets might have more than one correct solution, while others might not have a correct solution.
After you answer a question in this section, you will NOT be able to return to it. As a result, these questions will not appear in the review screen.
You have a Microsoft 365 subscription.
You have a user named User1. Several users have full access to the mailbox of User1.
Some email messages sent to User1 appear to have been read and deleted before the user viewed them.
When you search the audit log in Security & Compliance to identify who signed in to the mailbox of User1, the results are blank.
You need to ensure that you can view future sign-ins to the mailbox of User1.
You run the Set-AdminAuditLogConfig -AdminAuditLogEnabled \$true-AdminAuditLogCmdlets *Mailbox* command. Does that meet the goal?

- A. Yes
- B. No

Answer: B

Explanation:

References:

<https://docs.microsoft.com/en-us/powershell/module/exchange/policy-and-compliance-audit/setadmindauditlogconfig?view=exchange-ps>

NEW QUESTION 76

You have a Microsoft 365 subscription.
A security manager receives an email message every time a data loss prevention (DLP) policy match occurs.
You need to limit alert notifications to actionable DLP events.
What should you do?

- A. From the Security & Compliance admin center, modify the Policy Tips of a DLP policy.
- B. From the Cloud App Security admin center, apply a filter to the alerts.
- C. From the Security & Compliance admin center, modify the User overrides settings of a DLP policy.
- D. From the Security & Compliance admin center, modify the matched activities threshold of an alert policy.

Answer: D

Explanation:

References:

<https://docs.microsoft.com/en-us/office365/securitycompliance/alert-policies>

NEW QUESTION 81

HOTSPOT

You have a Microsoft 365 subscription. Auditing is enabled.
A user named User1 is a member of a dynamic security group named Group1. You discover that User1 is no longer a member of Group1.
You need to search the audit log to identify why User1 was removed from Group1.
Which two actions should you use in the search? To answer, select the appropriate activities in the answer area.
NOTE: Each correct selection is worth one point.

If User1 runs a scheduled task that copies File1.docx to a local folder every five minutes.
 [answer choice].

	▼
Policy1 will not be triggered	
Policy1 will be triggered after 45 minutes	
Policy1 will be triggered after 60 minutes	

If User1, User2, and User3 each run a scheduled task that copies File1.docx to a local folder every 10 minutes. [answer choice].

	▼
Policy1 will not be triggered	
Policy1 will be triggered within 20 minutes	
Policy1 will be triggered within 45 minutes	
Policy1 will be triggered after 60 minutes	

- A. Mastered
- B. Not Mastered

Answer: A

Explanation:

References:

<https://docs.microsoft.com/en-us/office365/securitycompliance/alert-policies>

NEW QUESTION 88

You have a Microsoft 365 subscription.

All users are assigned a Microsoft 365 E5 license. How long will auditing data be retained?

- A. 30 days
- B. 90 days
- C. 365 days
- D. 5 years

Answer: B

Explanation:

References:

<https://docs.microsoft.com/en-us/office365/securitycompliance/search-the-audit-log-in-security-and-compliance>

NEW QUESTION 92

HOTSPOT

You have a Microsoft 365 subscription.

You create a retention label named Label1 as shown in the following exhibit.

The screenshot shows the 'Review your settings' page for a retention label named 'Label1'. On the left, there are three tabs: 'Name your label' (selected), 'Label settings', and 'Review your settings'. The 'Name your label' tab is active, showing the label name 'Label1' and a green checkmark. The 'Label settings' tab is also active, showing a green checkmark. The 'Review your settings' tab is inactive, showing a grey circle. The main content area displays the following settings:

- Name:** Label1 (with an 'Edit' link)
- Descriptions for admins:** (with an 'Edit' link)
- Description for users:** (with an 'Edit' link)
- Retention:** 2 years (with an 'Edit' link)
- Retention details:** Retain and Delete, Based on when it was created, Use Label to classify content as a "Record"

At the bottom, there are three buttons: 'Back', 'Create this label', and 'Cancel'.

You publish Label1 to SharePoint sites.

Use the drop-down menus to select the answer choice that completes each statement based on the information presented in the graphic.

NOTE: Each correct selection is worth one point.

If you create a file in a Microsoft SharePoint library on January 1, 2019, you can [answer choice].

	▼
never delete the file.	
delete the file before January 1, 2021.	
delete the file after January 1, 2021.	

If you create a file in a Microsoft SharePoint library on March 15, 2019, the file will [answer choice].

	▼
always remain in the library.	
remain in the library until you delete the file.	
be deleted automatically on March 15, 2021.	

- A. Mastered
- B. Not Mastered

Answer: A

Explanation:

References:

<https://docs.microsoft.com/en-us/office365/securitycompliance/labels>

NEW QUESTION 96

You have a Microsoft 365 subscription.

You have a team named Team1 in Microsoft Teams. You plan to place all the content in Team1 on hold.

You need to identify which mailbox and which Microsoft SharePoint site collection are associated to Team1.

Which cmdlet should you use?

- A. Get-UnifiedGroup
- B. Get-MailUser
- C. Get-TeamMessagingSettings
- D. Get-TeamChannel

Answer: A

NEW QUESTION 99

Several users in your Microsoft 365 subscription report that they received an email message without the attachment. You need to review the attachments that were removed from the messages. Which two tools can you use? Each correct answer presents a complete solution. NOTE: Each correct selection is worth one point.

- A. the Exchange admin center
- B. the Azure ATP admin center
- C. Microsoft Azure Security Center
- D. the Security & Compliance admin center
- E. Outlook on the web

Answer: AD

Explanation:

References:

<https://docs.microsoft.com/en-us/office365/securitycompliance/manage-quarantined-messages-and-files>

NEW QUESTION 101

Note: This question is part of a series of questions that present the same scenario. Each question in the series contains a unique solution that might meet the stated goals. Some questions sets might have more than one correct solution, while others might not have a correct solution.

After you answer a question in this section, you will NOT be able to return to it. As a result, these questions will not appear in the review screen.

You have an on-premises Active Directory domain named contoso.com.

You install and run Azure AD Connect on a server named Server1 that runs Windows Server. You need to view Azure AD Connect events.

You use the Directory Service event log on Server1. Does that meet the goal?

- A. Yes
- B. No

Answer: B

Explanation:

References:

<https://support.pingidentity.com/s/article/PingOne-How-to-troubleshoot-an-AD-Connect-Instance>

NEW QUESTION 102

Note: This question is part of a series of questions that present the same scenario. Each question in the series contains a unique solution that might meet the stated goals. Some questions sets might have more than one correct solution, while others might not have a correct solution.

After you answer a question in this section, you will NOT be able to return to it. As a result, these questions will not appear in the review screen.

You have an on-premises Active Directory domain named contoso.com.

You install and run Azure AD Connect on a server named Server1 that runs Windows Server. You need to view Azure AD Connect events.

You use the System event log on Server1. Does that meet the goal?

- A. Yes
- B. No

Answer: B

Explanation:

References:

<https://support.pingidentity.com/s/article/PingOne-How-to-troubleshoot-an-AD-Connect-Instance>

NEW QUESTION 105

Note: This question is part of a series of questions that present the same scenario. Each question in the series contains a unique solution that might meet the stated goals. Some questions sets might have more than one correct solution, while others might not have a correct solution.

After you answer a question in this section, you will NOT be able to return to it. As a result, these questions will not appear in the review screen.

You have a Microsoft 365 subscription.

You have a user named User1. Several users have full access to the mailbox of User1. Some email messages sent to User1 appear to have been read and deleted before the user viewed them. When you search the audit log in Security & Compliance to identify who signed in to the mailbox of User1, the results are blank. You need to ensure that you can view future sign-ins to the mailbox of User1. You run the Set-MailboxFolderPermission –Identity "User1" -User User1@contoso.com –AccessRights Owner command. Does that meet the goal?

- A. Yes
- B. No

Answer: B

Explanation:

References:

<https://docs.microsoft.com/en-us/powershell/module/exchange/mailboxes/set-mailbox?view=exchange-ps>

NEW QUESTION 106

.....

THANKS FOR TRYING THE DEMO OF OUR PRODUCT

Visit Our Site to Purchase the Full Set of Actual MS-500 Exam Questions With Answers.

We Also Provide Practice Exam Software That Simulates Real Exam Environment And Has Many Self-Assessment Features. Order the MS-500 Product From:

<https://www.2passeasy.com/dumps/MS-500/>

Money Back Guarantee

MS-500 Practice Exam Features:

- * MS-500 Questions and Answers Updated Frequently
- * MS-500 Practice Questions Verified by Expert Senior Certified Staff
- * MS-500 Most Realistic Questions that Guarantee you a Pass on Your FirstTry
- * MS-500 Practice Test Questions in Multiple Choice Formats and Updatesfor 1 Year