

CompTIA

Exam Questions N10-007

CompTIA Network+ N10-007



NEW QUESTION 1

- (Exam Topic 1)

A device operating at Layer 3 of the OSI model uses which of the following protocols to determine the path to a different network?

- A. STP
- B. RTP
- C. RIP
- D. NTP
- E. SIP

Answer: C

NEW QUESTION 2

- (Exam Topic 1)

Which of the following wireless connection types utilize MIMO on non-overlapping channels? (Choose two.)

- A. 802.11a
- B. 802.11ac
- C. 802.11b
- D. 802.11g
- E. 802.11n

Answer: BE

NEW QUESTION 3

- (Exam Topic 1)

A UTM is deployed on the external edge of the main corporate office. The office connects to the WAN port of the edge router. The edge router at the main office connects to the remote offices using GRE IPsec tunnels. A network administrator notices that a worm that was not detected by the UTM has spread from the remote sites into the corporate network. The UTM currently has traffic rules applied that should block the port used by the worm. Which of the following steps would MOST likely correct this issue?

- A. Move the UTM onto the LAN side of the network
- B. Enable TLS inspection on the UTM
- C. Enable stateful inspection on the UTM
- D. Configure the UTM to deny encrypted files from being transferred

Answer: C

NEW QUESTION 4

- (Exam Topic 1)

Which of the following backup techniques is used to capture all the data that has changed since the least full backup?

- A. Incremental
- B. Replica
- C. Different
- D. Snapshot

Answer: C

NEW QUESTION 5

- (Exam Topic 1)

A technician is troubleshooting a workstation's network connectivity and wants to confirm which switchport corresponds to the wall jack the PC is using. Which of the following concepts would BEST jack the technician?

- A. Consistent labeling
- B. Change management
- C. Standard work instruction D .Inventory management
- D. Network baseline

Answer: A

NEW QUESTION 6

- (Exam Topic 1)

A network technician installs a web server on the firewall. Which of the following methods should the technician implement to allow access to outside users without giving access to the inside network?

- A. VLAN
- B. DMZ
- C. SNMP
- D. NTP

Answer: B

NEW QUESTION 7

- (Exam Topic 1)

A network technician configures a firewall's ACL to allow outgoing traffic for several popular services such as email and web browsing. However, after the firewall's deployment, users are still unable to retrieve their emails. Which of the following would BEST resolve this issue?

- A. Allow the firewall to accept inbound traffic to ports 25, 67, 179, and 3389
- B. Allow the firewall to accept inbound traffic to ports 80, 110, 143, and 443
- C. Set the firewall to operate in transparent mode
- D. Allow the firewall to accept inbound traffic to ports 21, 53, 69, and 123

Answer: B

NEW QUESTION 8

- (Exam Topic 1)

A home user has purchased a new smart TV to stream online video services. The smart TV is unable to connect to the wireless network after several attempts. After from vacation, the home user tries again and can connect the TV to wireless network. However, the user notice a laptop is no longer able to connect to the network. Which of the following is the MOST likely cause?

- A. The DHCP scope has been exhausted.
- B. The security passcode has been changed
- C. The SSID is hidden.
- D. The AP configuration was reset.

Answer: A

NEW QUESTION 9

- (Exam Topic 1)

A administrator is troubleshooting a user's intermitted wireless connectivity issue. Other users across the hallway can connect use the wireless network properly. Upon inspection of the connection details, the administrator finds the following:

| | |
|--------|--------------|
| SSID | Company-WiFi |
| Signal | 5% |
| SNR | 2 |

Which of the following is MOST likely the cause of the poor wireless connection?

- A. Channel overlap
- B. Overcapacity
- C. Incorrect antenna type
- D. Latency

Answer: C

NEW QUESTION 10

- (Exam Topic 1)

Employees want the ability to use personal devices on the guest network while working out at the company gym. In order to meet the request, which of the following policies requires employee adherence?

- A. AUP
- B. SLA
- C. NDA
- D. MOU

Answer: A

NEW QUESTION 10

- (Exam Topic 1)

Users are reporting Internet connectivity issues. The network administrator wants to determine if the issues are internal to the company network or if there is an issue with the ISP. Which of the following tools should be used to BEST determine where the outage is occurring?

- A. traceroute
- B. ping
- C. nslookup
- D. netstat

Answer: A

NEW QUESTION 12

- (Exam Topic 1)

A technician must determine if a web page user's visits are connecting to a suspicious website's IP address in the background. Which of the following tools would provide the information on TCP connections?

- A. netstat
- B. tracert
- C. arp
- D. ipconfig

E. route

Answer: A

NEW QUESTION 17

- (Exam Topic 1)

A network technician needs to set up an access method for Ann, a manager, to work from home. Ann needs to locally mapped corporate resources to perform her job. Which of the following would provide secure access to the corporate resources?

- A. Utilize an SSH connection to the corporate server.
- B. Use TFTP to transfer files to corporate resources.
- C. Allow RDP through an external firewall.
- D. Connect utilizing client-to-site VPN.

Answer: D

NEW QUESTION 20

- (Exam Topic 1)

A network technician recently installed a new server on a network. The technician must ensure the server does not have any unnecessary services running. The IP address of the server is 204.211.38.50

Which of the following commands would allow the technician to make this determination?

- A. nmap
- B. pathping
- C. route
- D. nslookup

Answer: A

NEW QUESTION 21

- (Exam Topic 1)

A critical vulnerability is discovered on a network device. The vendor states it has already patched this vulnerability in its current release. Which of the following actions should an administrator take?

- A. Change the default password
- B. Use a firewall in front of the device.
- C. Update the firmware.
- D. Upgrade the configuration.

Answer: C

NEW QUESTION 23

- (Exam Topic 1)

A technician is setting up a public guest network for visitors to access the Internet that must be separate from the corporate network. Which of the following are the BEST steps for the technician to take with minimum overhead configuration? (Choose two.)

- A. Enable SSID broadcasting to identify the guest network
- B. Configure visitor devices to use static IP addresses
- C. Enable two-factor authentication on visitor devices
- D. Configure the access point to use WPA2-AES encryption
- E. Ensure the access point is not running in mixed mode

Answer: AB

NEW QUESTION 28

- (Exam Topic 1)

A network technician is setting up a new router. Since it is exposed to the public, which of the following are the BEST steps the technician should take when setting up this device? (Choose two.)

- A. Disable unnecessary services.
- B. Use private IP addresses.
- C. Allow remote management access.
- D. Disable the console port.
- E. Enable encryption.
- F. Upgrade to the latest firmware.

Answer: AF

NEW QUESTION 33

- (Exam Topic 1)

A technician is assigned to secure a basic wireless network. Which of the following authentication protocol should the technician use to performed this task (select TWO).

- A. RDP
- B. SNMP
- C. WPA2
- D. EAP SSL

Answer: CD

NEW QUESTION 34

- (Exam Topic 1)

A user checks an IP address using an external website. The address is different than the one the user sees when opening a command prompt and typing in ipconfig/all. The user does not understand why the two tools show different IP addresses. This is BEST explained by the interworking of:

- A. network devices
- B. packet flow
- C. public/private networks
- D. traffic-routing protocols

Answer: C

NEW QUESTION 38

- (Exam Topic 1)

A technician discovers that multiple switches require a major update. Which of the following policies should be followed?

- A. Change management policy
- B. Remote access policy
- C. Acceptable use policy
- D. Memorandum of understanding

Answer: A

NEW QUESTION 43

- (Exam Topic 1)

A router is set up to utilize RIPv2 to route traffic throughout the network. Which of the following routing metrics is used to determine the path?

- A. Distance
- B. bandwidth
- C. Speed
- D. hop count

Answer: D

NEW QUESTION 46

- (Exam Topic 1)

A network technician receives a call from a user in the accounting department stating that Internet connectivity has been lost after receiving a new workstation. No other users in accounting are reporting similar issues. The network technician is able to ping the machine from the accounting department's router, but is not able to ping the machine from the IT network. Which of the following is MOST likely the cause?

- A. Incorrect default gateway
- B. Duplicate IP address
- C. Misconfigured OSPF
- D. Improper VLAN assignment

Answer: A

NEW QUESTION 48

- (Exam Topic 1)

Which of the following are characteristics of jumbo frames? (Choose two.)

- A. Commonly used on SAN
- B. MTU size greater than 1500
- C. MTU size greater than 10000
- D. Commonly used on IaaS
- E. MTU size greater than 12000

Answer: AB

NEW QUESTION 49

- (Exam Topic 1)

A network engineer planning for wireless connectivity in large office building. Currently, the office building contains both legacy and newer devices. Which of the following wireless network routers should engineer select for the fastest throughput for all wireless devices in the office building?

- A. 802.11ac
- B. 802.11b
- C. 802.11g
- D. 802.11n

Answer: A

Explanation:

<https://www.forbes.com/forbes/welcome/?toURL=https://www.forbes.com/sites/gordonkelly/2014/12/30/802-11>

NEW QUESTION 53

- (Exam Topic 1)

A disgruntled employee executes a man-in-the-middle attack on the company network. Layer 2 traffic destined for the gateway is redirected to the employee's computer. This type of attack is an example of:

- A. ARP cache poisoning
- B. IP spoofing
- C. amplified DNS attack
- D. evil twin

Answer: A

NEW QUESTION 57

- (Exam Topic 1)

A network technician downloaded new firmware for the company firewall. Which of the following should the network technician verify to ensure the downloaded file is correct and complete?

- A. File hash
- B. File date
- C. File type
- D. File size

Answer: A

NEW QUESTION 61

- (Exam Topic 1)

Management has requested that services be available within 72 hours of disaster, Budget is a major concern. A contract is signed with a company that has plenty space, and the technician will have the option of putting infrastructure equipment in place. Which of the following BEST describes this business continuity strategy?

- A. Cold site
- B. Differentiate backup
- C. Hot site
- D. Incremental backup
- E. Warm site
- F. Full backup

Answer: A

NEW QUESTION 66

- (Exam Topic 1)

A network technician has unable to make a from a datacenter. The technician attempts to use the cables to connect desktops to the network without success. Which of the following is MOST likely the issue?

- A. The cables have an incorrect pin out
- B. The cables UTP instead of STP.
- C. The cables are 6 instead of Cat 5.
- D. The cables plenum rated.

Answer: D

NEW QUESTION 67

- (Exam Topic 1)

A company recently upgraded all of its printers to networked multifunction devices. Users can print to the new devices, but they would also like the ability to scan and fax files from their computers. Which of the following should the technician update to allow this functionality?

- A. Device software
- B. Printer drivers
- C. Printer firmware
- D. NIC drivers

Answer: C

NEW QUESTION 69

- (Exam Topic 1)

A network technician is installing a new wireless network in a small office. Due to environment concerns, The customer wants the network to run exclusively on the %GHz frequency. Which of the following wireless technologies should the technician install meet this requirement? (Select TWO).

- A. 802.11ac
- B. 802 11b
- C. 802 11g
- D. 802.11n
- E. Bluetooth
- F. z-Ware

Answer: AD

NEW QUESTION 74

- (Exam Topic 1)

A network technician is implementing a solution on the network to hide the workstation internal IP addresses across a WAN. Which of the following is the technician configuring?

- A. QoS
- B. DMZ
- C. RIP
- D. NAT

Answer: D

NEW QUESTION 75

- (Exam Topic 1)

A company dedicates deploy customer –facing, touch-screen kiosks. The kiosks appear to have several open service ports that potentially became compromised. Which of the following is the MOST effective way to project the kiosk?

- A. Install an IDS to monitor all traffic to and from the kiosk.
- B. install honeypots on the network to detect and analyze potential kiosks attacks before they occur.
- C. Enable switchport security on the ports to which the kiosks are connected to prevent network level attacks.
- D. Create a new segment with ACLs, limiting kiosks traffic with the internal network

Answer: A

NEW QUESTION 80

- (Exam Topic 1)

A network technician is configuring a firewall access list to secure incoming connections to an email server. The internal address of this email server is 192.168.1.143. The firewall should allow external email servers to send email to the email server. The email server also supports client access via a web browser. Only secure protocols should be used, and only the necessary ports should be open. Which of the following ACL rules should be configured in the firewall's WAN port? (Choose two.)

- A. Permit 192.168.1.143.25
- B. Permit 192.168.1.143.80
- C. Permit 192.168.1.143.110
- D. Permit 192.168.1.143.143
- E. Permit 192.168.1.143.443
- F. Permit 192.168.1.143.587

Answer: EF

NEW QUESTION 85

- (Exam Topic 1)

Two building used to be connected by wireless bridge, but they are upgrading to fiber. Which of the following new devices would be required at the demarcation points?

- A. Wireless access point
- B. Router
- C. Media converter
- D. Firewall

Answer: B

NEW QUESTION 88

- (Exam Topic 1)

A network administrator is testing connectivity at a new corporate site. The site has a wireless guest as well as a wired employee network. After verifying connectivity, the administrator checks link speeds by using a speed testing website. The speed testing website shows lower download and upload speeds for the wired network than the wireless network. Which of the following is the MOST likely explanation?

- A. There is less local congestion on the wireless network
- B. The testing server for the wired network was farther away
- C. The firewall is configured to throttle traffic to specific websites
- D. The wireless access points were misconfigured

Answer: B

NEW QUESTION 92

- (Exam Topic 1)

A network technician is connecting two switches together. Which of the following protocols should the technician use to increase speed and fault tolerance?

- A. SIP
- B. BGP
- C. LACP
- D. LLDP

Answer: C

NEW QUESTION 93

- (Exam Topic 1)

A technician set up a new SOHO network recently. The installed router has four Ethernet ports; however the customer has seven devices that wired connections. Which of the following should the technician do to BEST meet the customer's requirements?

- A. Install a six-port switch
- B. Configure port forwarding on the router
- C. Install WAPs near the devices.
- D. Configure the switchports as EtherChannel ports.

Answer: A

NEW QUESTION 94

- (Exam Topic 1)

A technician is upgrading the firmware on an older KVM switch. The specifications call for a serial port to connect to the computer on one side, and an Ethernet jack to connect to the switch on the other side. Which of the following connectors does the technician need for this cable? (Choose two.)

- A. RG-9
- B. DB-9
- C. RJ-11
- D. DB-25
- E. RJ-45
- F. BNC

Answer: BE

NEW QUESTION 99

- (Exam Topic 1)

A network technician has discovered a rogue access point under an empty cubicle desk. Which of the following should the technician perform to ensure another cannot be placed on the network?

- A. Disable unused ports on switches
- B. Enable DHCP guard to detect rogue servers
- C. Configure WPA2 on all access points
- D. Use TACACS+ authentication

Answer: B

NEW QUESTION 103

- (Exam Topic 1)

AContent filter is set to analyze XML and JSON that users access from the internet. At which of the following layer's is this analysis taking place?

- A. 1
- B. 3
- C. 5
- D. 7
- E. 6

Answer: E

NEW QUESTION 104

- (Exam Topic 1)

A network technician has salvaged several Ethernet cables from a datacenter. The technician attempts to use the cables to connect desktops to the network without success. Which of the following is MOST likely the issue?

- A. The cables have an incorrect pin-out.
- B. The cables are UTP instead of STP.
- C. The cables are Cat 6 instead of Cat 5.
- D. The cables are not plenum rated.

Answer: A

NEW QUESTION 105

- (Exam Topic 1)

A system administrator receives report from users of odd behavior in regard to recently installed server. While reviewing the server network configuration, the systems administrator does both a forward and a reverse DNS lookup on the host, along with the network adapter configuration.


```
$ host server.company.com
server.company.com has address 129.168.0.100
server.company.com is handled by 100 mail.company.com
$ host 192.168.0.100
100.0.168.192.in-addr.arpa domain name pointer web.company.com
$ host web.company.com
server.company.com has address 129.168.0.50
server.company.com is handled by 100 mail.company.com
$ ifconfig -a
eth0Link encap:Ethernet HWaddr 00:30:48:9D:06:73
Inet addr:192.168.0.100 Bcast:192.168.0.255 Mask:255.255.255.0
UP BROADCAST RUNNING MULTICAST MTU:1500 Metric:1
lo0Link encap:Local Loopback
inet addr:127.0.0.1 Mask:255.0.0.0
UP LOOPBACK RUNNING MTU:16436 Metric:1
```

Which of the following is the problem identified in the output above?

- A. There is no reverse DNS entry for this host.
- B. The server IP address is incorrectly configured.
- C. The DNS lookup entry is incorrectly configured.
- D. The reverse DNS entry is pointing to a different host.

Answer: C

NEW QUESTION 106

- (Exam Topic 1)

A network technician is working on a proposal for email migration from an on-premises email system to a vendor-hosted email in the cloud. The technician needs to explain to management what type of cloud model will be utilized with the cloud-hosted email. Which of the following cloud models should the technician identify in the proposal?

- A. IaaS
- B. PaaS
- C. SaaS
- D. MaaS

Answer: C

NEW QUESTION 110

- (Exam Topic 1)

Which of the following physical security devices is used to detect unauthorized server room access?

- A. Access badge
- B. Biometrics
- C. Smart card
- D. Video surveillance

Answer: D

NEW QUESTION 112

- (Exam Topic 1)

A technician is utilizing SNMPv3 to monitor network statistics. Which of the following actions would occur immediately of a server's utilization spikes above the prescribed value?

- A. A trap message is sent via UDP to the monitoring workstation.
- B. The SET function pushes an alert to the MIB database.
- C. The object identifier is modified and reported during the next monitoring cycle.
- D. A response message is sent from the agent to the manager.

Answer: A

NEW QUESTION 114

- (Exam Topic 1)

Which of the following are characteristic of jumbo frames? (Select TWO).

- A. Commonly used on SAN
- B. MTU size greater than 1500
- C. MTU size greater than 10000
- D. Commonly used on IaaS
- E. MTU size greater than 12000

Answer: BD

NEW QUESTION 119

- (Exam Topic 1)

A technician needs to order cable that meets 10GBaseT and safety requirements for an installation between a drop ceiling and a standard ceiling.

Which of the following should the technician order to ensure compliance with the requirements?

- A. PVC Cat 5
- B. Plenum Cat 5e
- C. Plenum Cat 6a
- D. PVC Cat 7

Answer: C

Explanation:

10GBaseT A 10 GbE standard designed to run on Cat 6a UTP cabling. Maximum cable length of 100 m.

NEW QUESTION 122

- (Exam Topic 1)

In which of the following scenarios should a technician use a cross-over cable to provide connectivity?

- A. PC to switch
- B. Switch to AP
- C. Router to switch
- D. Router to modem
- E. PC to PC

Answer: E

NEW QUESTION 123

- (Exam Topic 1)

Which of the following protocols authenticates a PC to the server using a ticket issued to it by the authentication service?

- A. Kerberos
- B. RADIUS
- C. TACACS+
- D. LDAP

Answer: A

NEW QUESTION 124

- (Exam Topic 1)

A network administrator gets a call regarding intermittent network outages across the country. Which of the following should be used to connect to the network so the administrator can troubleshoot this issue from home? (Choose two.)

- A. FTP
- B. SMTP
- C. VPN
- D. SSH
- E. SNMP

Answer: CD

NEW QUESTION 128

- (Exam Topic 1)

A technician is working on a new machine that has been procured for testing and development. The machine will run a hypervisor and host several operating systems of various types so the development team can test the company's applications in a variety of environments. The technician wants the virtual machines to be available to communicate with each other without leaving the hypervisor. Which of the following is the BEST solution to the problem?

- A. The technician should connect the machine to its own separate switch.
- B. The technician should add a route in each virtual machine to the default gateway.
- C. The technician should configure a virtual switch.
- D. The technician should set up individual routes between the machines.

Answer: C

NEW QUESTION 133

- (Exam Topic 1)

A junior technician is setting up a voice control device so the Chief Executive Officer (CEO) will be able to control various things in the office. Of which of the following types of IoT technologies is this an example?

- A. LAN
- B. WAN
- C. SAN
- D. PAN

Answer: D

NEW QUESTION 134

- (Exam Topic 1)

A network administrator is going to be performing a major upgrade to the network. Which of the following should the administrator use in case of a failure?

- A. Baseline report
- B. Vulnerability report
- C. Rollback plan
- D. Business continuity plan

Answer: C

NEW QUESTION 138

- (Exam Topic 1)

Which of the following is the number of broadcast domain that are created when using an unmanaged 12-port switch?

- A. 1
- B. 2
- C. 6
- D. 12

Answer: B

NEW QUESTION 141

- (Exam Topic 1)

A network technician is diagnosing a time-out issue generated from an end user's web browser. The web browser issues standard HTTP get and post commands to interact with the website. Given this information, the technician would like to analyze the entire TCP handshake of the HTTP requests offline. Which of the following tools would allow the technician to view the handshake?

- A. Packet analyzer
- B. Port analyzer
- C. SNMP traps
- D. Spectrum analyzer

Answer: A

NEW QUESTION 144

- (Exam Topic 1)

A junior network technician is setting up a new email server on the company network. Which of the following default ports should the technician ensure is open on the firewall so the new email server can relay email?

- A. 23
- B. 25
- C. 110
- D. 143

Answer: B

NEW QUESTION 149

- (Exam Topic 1)

Which of the following devices should a network administrator configure on the outermost part of the network?

- A. Media converter
- B. Switch
- C. Modem
- D. Firewall

Answer: D

NEW QUESTION 151

- (Exam Topic 1)

A technician is configuring a printer for a client. The technician connects the printer to the network, but is unsure how to determine its switchport. Which of the following should the technician do FIRST to locate the switchport?

- A. Perform a DNS lookup on the server.
- B. Set up an SSH session to the desktop.
- C. Reference the ARP table in the router.
- D. Configure port security on the switch.

Answer: C

NEW QUESTION 152

- (Exam Topic 1)

Which of the following DNS records needs to be configured for SMTP traffic?

- A. MX
- B. CNAME
- C. AAAA
- D. PTR

Answer: A

NEW QUESTION 153

- (Exam Topic 1)

A firewall administrator is implementing a rule that directs HTTP traffic to an internal server listening on a non-standard socket. Which of the following types of rules is the administrator implementing?

- A. NAT
- B. PAT
- C. STP
- D. SNAT
- E. ARP

Answer: B

NEW QUESTION 158

- (Exam Topic 1)

The process of attempting to exploit a weakness in a network after being given permission by the company is known as:

- A. penetration testing
- B. vulnerability scanning
- C. reconnaissance
- D. social engineering

Answer: A

NEW QUESTION 163

- (Exam Topic 1)

The Chief Information Officer (CIO) has noticed the corporate wireless signal is available in the parking lot. Management requests that the wireless network be changed so it is no longer accessible in public areas, without affecting the availability inside the building. Which of the following should be changed on the network?

- A. Power levels
- B. Overcapacity
- C. Distance limitations
- D. Channel overlap

Answer: A

NEW QUESTION 166

- (Exam Topic 1)

A junior network technician is working in the field and needs to connect to the company/s remote server, however, doing so will require the junior technician to use the public Internet. Because security is a concern which of the following is the BEST method to use?

- A. Telnet
- B. SSH
- C. SFTP
- D. VNC

Answer: B

NEW QUESTION 171

- (Exam Topic 1)

A contractor is setting up and configuring conference rooms for a convention. The contractor sets up each room in the conference center to allow wired Internet access going to individual tables. The contractor measured the distance between the hotel's patch panel to the jack, and the distance is within Cat 5e specifications. The contractor is concerned that the room will be out of specification if cables are run in each room from the wall jacks. Which of the following actions should the contractor take to ensure the cable runs meet specifications and the network functions properly?

- A. Place a switch at the hotel's patch panel for connecting each room's cables
- B. Place a switch on each table to ensure strong connectivity
- C. Place repeaters between the patch panel and the rooms
- D. place a switch at the wall jack and run the cables in the room from there

Answer: A

NEW QUESTION 174

- (Exam Topic 1)

An employee wishes to use a personal cell phone for work-related purposes, including storage of sensitive company data, during long business trips. Which of the following is needed to protect BOTH the employee and the company?

- A. An NDA ensuring work data stored on the personal phone remains confidential
- B. An AUP covering how a personal phone may be used for work matters
- C. A consent to monitoring policy covering company audits of the personal phone
- D. Real-time remote monitoring of the phone's activity and usage

Answer: D

NEW QUESTION 175

- (Exam Topic 1)

Which of the following provides two factor authentication?

- A. Username+ password
- B. Smartcard +PIN
- C. Fingerprint +retina scan
- D. Key fob +ID card

Answer: B

NEW QUESTION 176

- (Exam Topic 1)

A network security technician observes multiple attempts to scan network hosts and devices. All the attempts originate from a single host on the network. Which of the following threats is MOST likely involved?

- A. Smurf attack
- B. Rogue AP
- C. Compromised system
- D. Unintentional DoS

Answer: C

NEW QUESTION 179

- (Exam Topic 1)

Ann, a network technician, has just installed a fiber switch in a datacenter. To run the fiber cabling, Ann plans the cable route over the top of the rack using the cable trays, down to the switch, coiling up any excess cable. As Ann configures the switch, she notices several messages in the logging buffer stating the receive signal of the SFP is too weak. Which of the following is MOST likely the cause of the errors in the logging buffer?

- A. Bend radius exceeded
- B. Fiber cable mismatch
- C. Fiber type mismatch
- D. Bad fiber switch

Answer: A

NEW QUESTION 184

- (Exam Topic 1)

A technician is trying to determine the IP address of a customer's router. The customer has an IP address of 192.168.1.55/24. Which of the following is the address of the customer's router?

- A. 192.168.0.55
- B. 192.168.1.0
- C. 192.168.1.1
- D. 192.168.5.5
- E. 255.255.255.0

Answer: C

NEW QUESTION 185

- (Exam Topic 1)

Which of the following BEST describes the differences between VLAN hopping and session hijacking?

- A. VLAN hopping involves the unauthorized transition from one VLAN to another to gain additional acces
- B. Session hijacking involves overriding a user's web connection to execute commands
- C. VLAN hopping is a brute force attack executed to gain additional acces
- D. Session hijacking involves physically disrupting a network connection
- E. VLAN hopping involves overriding a user network connection to execute malicious command
- F. Session hijacking involves compromising a host to elevate privileges
- G. VLAN hopping is the act of exploiting poor VLAN taggin
- H. Session hijacking is a web-based attack aimed at privilege escalation

Answer: A

NEW QUESTION 187

- (Exam Topic 1)

A network administrator wants to increase the confidentiality of the system by hardening the authentication process. Currently, the users log in using usernames and passwords to access the system. Which of the following will increase the authentication factor to three?

- A. Adding a fingerprint reader to each workstation and providing a RSA authentication token
- B. Adding a fingerprint reader and retina scanner
- C. Using a smart card and RSA token
- D. Enforcing a stronger password policy and using a hand geometry scan

Answer: A

NEW QUESTION 190

- (Exam Topic 1)

Which of the following is recognized as the SMALLEST network type?

- A. SAN
- B. CAN
- C. PAN
- D. LAN

Answer: C

Explanation:

PAN is definitively the smallest type of network you can currently use and the name comes from Personal Area Network. You've probably used this in the last week without even knowing it.

<http://compinfofro.com/types-of-network-pan-man-wlan-san-can-dan/>

NEW QUESTION 191

- (Exam Topic 1)

A technician is downloading an ISO from a vendor's website. To ensure the integrity of the download, which of the following should be verified?

- A. File size
- B. Vendor URL
- C. File hashing
- D. Encryption

Answer: C

NEW QUESTION 195

- (Exam Topic 1)

In which of the following ways does a DDoS attack differ from a spoofing attack?

- A. DDoS attacks target multiple networks
- B. Spoofing attacks originate from a single host
- C. DDoS attacks are launched from multiple hosts
- D. Spoofing attacks require physical presence

Answer: C

NEW QUESTION 198

- (Exam Topic 1)

An analyst is developing a proof of concept of a wireless-based attack as part of a penetration test against an organization's network. As part of the attack, the analyst launches a fake access point matching the SSID of the organization's guest access network. When a user connects to the fake access point, the analyst allows the traffic to flow through the access point to the legitimate site while the data traversing the network is logged for latest analysis and exploitation. Which of the following attacks has the analyst successfully performed in this scenario?

- A. Bluesnarfing
- B. Session hijacking
- C. MAC spoofing
- D. VLAN hopping
- E. Man-in-the-middle

Answer: E

NEW QUESTION 199

- (Exam Topic 1)

A network technician needs to install a new access switch. After installing the new switch, the technician begins to move connections from the old switch to the new switch. The old switch used a GBIC connectors, and the new switch uses an SEF LC with LC connectors. After connecting the SC connector to the SC-to-LC adapter and plugging it to the switch, the link does not come up as expected. Which of the following should a network technician perform NEXT?

- A. Replace SEP with a new one.
- B. Fall back to the switch.
- C. Transpose the fiber pairs.
- D. Replace multimode with single-mode cable

Answer: C

NEW QUESTION 202

- (Exam Topic 1)

A network engineer is designing a new IDF in an old building. The engineer determines the equipment will fit in a two-post rack, and there is power available for this equipment. Which of the following would be the FIRST issue to remediate?

- A. Air flow and cooling
- B. UPS capability
- C. Circuit labeling
- D. Power redundancy

Answer: A

NEW QUESTION 205

- (Exam Topic 1)

Which of the following protocols is associated with a three-way handshake?

- A. UDP
- B. ICMP
- C. GRE
- D. TCP

Answer: D

NEW QUESTION 207

- (Exam Topic 1)

A technician is replacing a switch at a branch office and discovers the existing backbone cable does not fit in the new switch. The fiber patch panel has circular connections. The new switch has a transceiver that accepts a smaller square adapter of two strands. Which of the following patch cables would the technician need to complete the installation?

- A. LC to SC
- B. SC to ST
- C. LC to ST
- D. ST to ST
- E. SC to SC

Answer: C

NEW QUESTION 212

- (Exam Topic 1)

As part of a transition from a static to a dynamic routing protocol on an organization's internal network, the routing protocol must support IPv4 and VLSM. Based on those requirements, which of the following should the network administrator use? (Choose two.)

- A. OSPF
- B. IS-IS
- C. RIPv1
- D. BGP
- E. VRRP

Answer: AB

NEW QUESTION 215

- (Exam Topic 1)

Which of the following is used to classify network data for the purpose of providing QoS?

- A. STP
- B. VLANs
- C. SIP
- D. DSCP

Answer: D

NEW QUESTION 216

- (Exam Topic 1)

Which of the following VPN protocols establishes a secure session that can be initiated using a browser?

- A. IPSec
- B. SSL VPN
- C. PTP
- D. PPTP

Answer: B

NEW QUESTION 220

- (Exam Topic 1)

A network administrator is assigned to run and connect a Cat 6e Ethernet cable between two nodes in a datacenter. Which of the following connector types should the network administrator use to terminate this cable?

- A. DB-9
- B. RS-232
- C. DB-25
- D. RJ-45

Answer: D

NEW QUESTION 223

- (Exam Topic 1)

A network technician performs a wireless site survey at a company building and identifies that the cafeteria is not covered by a wireless signal. The cafeteria is located in a medium-size, square-shaped room. Which of the following types of WAP antenna should the technician install in the center of the cafeteria to provide the BEST coverage?

- A. Unidirectional
- B. Parabolic
- C. Omnidirectional
- D. Yagi

Answer: C

NEW QUESTION 226

- (Exam Topic 1)

A customer is reporting difficulty connecting some devices after replacing a wireless router with a new wireless 802.11ac router. The SSID, encryption and password are the same as the previous router. A technician goes on-site and notices the devices that are no longer connecting appear to be several years ago. Which of the following is MOST likely the problem?

- A. the password needs to be re-entered.
- B. there is a security type mismatch.
- C. there is insufficient antenna power.
- D. there is a frequency mismatch.
- E. the channel has changed.

Answer: D

NEW QUESTION 230

- (Exam Topic 1)

A network engineer is configuring wireless access for guests at an organization. Access to other areas in the organization should not be accessible to guests. Which of the following represents the MOST secure method to configure guest access to the wireless network?

- A. Guests should log into a separate wireless network using a captive portal
- B. Guests should log into the current wireless network using credentials obtained upon entering the facility
- C. The existing wireless network should be configured to allow guest access
- D. An additional wireless network should be configured to allow guest access

Answer: A

NEW QUESTION 235

- (Exam Topic 1)

A switch has detected duplicate broadcast messages sourced from a second port. The broadcasts continue to be transmitted and duplicated until the amount of traffic causes severe performance issues. Which of the following should be configured to prevent this behavior?

- A. BPDU guard
- B. DHCP snooping
- C. ARP protection
- D. Spanning tree

Answer: D

NEW QUESTION 239

- (Exam Topic 1)

A technician is connecting a PC to a switchport. At the wiring closet, the technician is identify which cable goes from patch panel a connected to the switch to patch panel B connected to the PC. Which of the following tools should the technician use to resolve the issue?

- A. Cable tester
- B. Multimeter
- C. Tone generator
- D. OTDR

Answer: C

NEW QUESTION 242

- (Exam Topic 1)

Which of the following would be the MOST efficient subnet mask for a point-to-point link?

- A. /28
- B. /29
- C. /31
- D. /32

Answer: C

NEW QUESTION 245

- (Exam Topic 1)

Which of the following protocols can be both connection-oriented and connectionless?

- A. 20 FTP
- B. 53 DNS
- C. 67 DHCP
- D. 80 HTTP

Answer: B

NEW QUESTION 249

- (Exam Topic 1)

An end-user device requires a specific IP address every time it connects to the corporate network; however, corporate policy does not allow the use of static IP addresses. Which of the following will allow the request to be fulfilled without breaking the corporate policy?

- A. DHCP relay
- B. DHCP exclusion
- C. DHCP option
- D. DHCP reservation

Answer: D

NEW QUESTION 252

- (Exam Topic 1)

Joe, an employee at a large regional bank, wants to receive company email on his personal smartphone and tablet. To authenticate on the mail server, he must first install a custom security application on those mobile services. Which of the following policies would BEST enforce this requirement?

- A. Incident response policy
- B. BYOD policy
- C. DLP policy
- D. Remote access policy

Answer: B

NEW QUESTION 255

- (Exam Topic 1)

Which of the following is networking stand-alone hardware that will permit any WIFI-compliant device to connect to a wired network?

- A. Wireless hub
- B. Wireless firewall
- C. Wireless access point
- D. Wireless bridge

Answer: C

NEW QUESTION 260

- (Exam Topic 1)

A technician replaces a failed router with a spare that has been in inventory for some time. After attempting to enable HTTPS on the spare router, the technician discovers the feature is unavailable. The support office was able to connect to the previous router. Which of the following actions should the technician perform to enable HTTPS access for the support team?

- A. Reboot the router
- B. Enable HTTP on the router
- C. Update the firmware of the spare router
- D. Perform a factory reset on the router

Answer: C

NEW QUESTION 261

- (Exam Topic 1)

Client PCs are unable to receive addressing information from a newly configured interface on a router. Which of the following should be added to allow the clients to connect?

- A. DHCP lease time
- B. IP helper
- C. TTL
- D. DNS record type

Answer: B

NEW QUESTION 266

- (Exam Topic 1)

A technician has been alerted of incoming HTTP traffic on the LAN segment that should not contain any web server's traffic. The technician has the IP address of the destination host and wants to determine if the socket for HTTP is open. Which of the following should the technician perform?

- A. Baseline assessment
- B. packet analysis
- C. portscan
- D. Patch-level assessment.

Answer: C

NEW QUESTION 271

- (Exam Topic 1)

A technician logs onto a system using Telnet because SSH is unavailable. SSH is enabled on the target device, and access is allowed from all subnets. The technician discovers a critical step was missed. Which of the following would allow SSH to function properly?

- A. Perform file hashing
- B. Generate new keys
- C. Update firmware
- D. Change default credentials

Answer: B

NEW QUESTION 274

- (Exam Topic 1)

The backups server connects to a NAS device using block-level storage over Ethernet. The performance is very slow, however, and the network technician suspects the performance issues are network related. Which of the following should the technician do to improve performance?

- A. Utilize UDP to eliminate packet overhead
- B. Turn off MDIX settings on the NAS and server switchports
- C. Enable jumbo frames on the NAS and server
- D. Encapsulate the storage traffic in a GRE tunnel

Answer: C

NEW QUESTION 275

- (Exam Topic 1)

Which of the following is the SHORTEST way to write 2001:0000:0d58:0000:0000:0095:7565:0001 in proper IPv6 shorthand?

- A. 2001::d58::95:7565:1
- B. 2001:0:d58:0:0:95:7565:1
- C. 2001:0:d58::95:7565:1
- D. 2001:0:0d58::95:7565:1

Answer: C

NEW QUESTION 278

- (Exam Topic 1)

An engineer is reviewing the implementation requirements for an upcoming project. The basic requirements identified by the customer include the following:

- ▶ WLAN architecture supporting speeds in excess of 150 Mbps
- ▶ Clientless remote network access
- ▶ Port-based network access control

Which of the following solution sets properly addresses all of the identified requirements?

- A. 802.11a, IPSec VPN, 802.1x
- B. 802.11ac, MPLS, 802.3
- C. 802.11b, PPTP, 802.1x
- D. 802.11g, MS-CHAP, 802.16
- E. 802.11n, SSL-VPN, 802.1x

Answer: E

NEW QUESTION 283

- (Exam Topic 1)

A network engineer is designing a new network for a remote site. The remote site consists of ten desktop computers, ten VoIP phones, and two network printers. In addition, two of the desktop computers at the remote site will be used by managers who should be on a separate network from the other eight computers. Which of the following represents the BEST configuration for the remote site?

- A. One router connected to one 24-port switch configured with three VLANs: one for the manager's computers and printer, one for the other computers and printer, and one for the VoIP phones
- B. Two routers with each router connected to a 12-port switch, with a firewall connected to the switch connected to the manager's desktop computers, VoIP phones, and printer
- C. One router connected to one 12-port switch configured for the manager's computers, phones, and printer, and one 12-port switch configured for the other computers, VoIP phones, and printer
- D. One router connected to one 24-port switch configured with two VLANs: one for the manager's computers, VoIP phones, and printer, and one for the other computers, VoIP phones, and printer

Answer: A

NEW QUESTION 286

- (Exam Topic 1)

A technician is connecting a router directly to a PC using the G1/0/1 interface. Without the use of auto-sensing ports, which of the following cables should be used?

- A. Straight-through
- B. Console
- C. Rollover
- D. Crossover

Answer: D

NEW QUESTION 289

- (Exam Topic 1)

Which of the following BEST describes an exploit?

- A. A router with default credentials
- B. An open mail relay server
- C. A SNMPv1 private community
- D. A privilege escalation script

Answer: D

NEW QUESTION 294

- (Exam Topic 1)

Users have been experiencing slow network response times, and management has asked the network technician to provide evidence of network improvement. After optimizing the network, which of the following would be required?

- A. IDF/MDF documentation
- B. Change management
- C. Performance baseline
- D. Physical diagram

Answer: C

NEW QUESTION 299

- (Exam Topic 1)

A network technician needs to connect to a remote router to modify the configuration, Which of the following method should the technician use to connected to the device security? (Select TWO)

- A. Telnet
- B. VNC
- C. SSH
- D. RDP
- E. HTTPS
- F. TFTP

Answer: BC

NEW QUESTION 301

- (Exam Topic 1)

A customer cannot access a company's secure website. The company's network security is reviewing the firewall for the server and finds the following output:

| Time | Action | Src IP | Src Port | Dst IP | Dst Port |
|------|--------|------------|----------|-----------|----------|
| 0902 | Allow | 12.73.15.5 | 31865 | 10.5.0.10 | 80 |
| 1005 | Deny | 12.73.15.5 | 31866 | 10.5.0.10 | 443 |
| 1006 | Deny | 12.73.15.5 | 31890 | 10.5.0.10 | 443 |

Which of the following changes should be made to allow all customers to access the company's secure website?

- A. Allow any any 10.5.0.10 443
- B. Allow any any 12.73.15.5 443
- C. Allow 10.5.0.10 443 any any
- D. Allow 10.5.0.10 any 10.5.0.10 80

Answer: C

NEW QUESTION 306

- (Exam Topic 1)

A user reports that a laptop cannot connect to the Internet despite the fact the wireless Internet was functioning on it yesterday. The user did not modify the laptop in any way, and the wireless Internet is functional on other users' laptops. Which of the following issues should be reviewed to help the user to connect to the wireless network?

- A. Wireless switch toggled off
- B. WAP settings
- C. WLAN IP address out of scope
- D. Wireless controller misconfiguration

Answer: A

NEW QUESTION 309

- (Exam Topic 1)

Users in a school lab are reporting slow connections to the servers and the Internet. Other users in the school have no issues. The lab has 25 computers and is connected with a single 1Gb Ethernet connection on Cat 5e wiring to an unmanaged switch. There are also three spare Cat 5e cable runs, which are not in use. The school wants to double the connection speed between the lab and the servers without running new cables. Which of the following would be the BEST solution?

- A. Plug in a second spare cable at each end to double the speed.
- B. Replace the switches with ones that utilize port bonding and use the spare cables.
- C. Replace the switches with 10Gb switches and utilize the existing cabling.

D. Plug in a second cable and set one port to TX and one port to RX.

Answer: B

NEW QUESTION 311

- (Exam Topic 1)

A network administrator configures an email server to use secure protocols. When the upgrade is completed, which of the following ports on the firewall should be configured to allow for connectivity? (Choose three.)

- A. TCP 25
- B. TCP 110
- C. TCP 143
- D. TCP 389
- E. TCP 587
- F. TCP 993
- G. TCP 995

Answer: EFG

NEW QUESTION 313

- (Exam Topic 1)

Which of the following WAN technologies is MOST preferred when developing a VoIP system with 23 concurrent channels?

- A. DSL
- B. POTS
- C. T1
- D. DOCSIS

Answer: C

NEW QUESTION 314

- (Exam Topic 1)

A network technician has implemented ACLs to limit access to cloud-based file storage. Which of the following security mechanisms has the technician enforced?

- A. DLP
- B. IDS
- C. WAF
- D. WPA
- E. TPM

Answer: C

NEW QUESTION 316

- (Exam Topic 1)

The Chief Executive Officer's (CEO's) tablet cannot connect to the wireless network from the corner office. A network technician verified the tablet can connect to the wireless network in other areas of the building. The distance between the office and the 802.11ac WAP is 150ft (46m), and there are a few cubicles in between. Which of the following is the MOST likely cause of the tablet not connecting?

- A. Absorption
- B. Reflection
- C. Distance
- D. Refraction
- E. Attenuation

Answer: C

NEW QUESTION 320

- (Exam Topic 1)

A computer lab on a campus network was recently reconfigured using recycled network cables. One of the 24 computers in the lab is unable to connect to the network after the upgrade. A network technician successfully uses the cable in question to connect directly to another computer. Which of the following is MOST likely issue with the cable?

- A. The cable is a crossover cable
- B. The cable is rollover cable
- C. The cable has bent pins
- D. The cable is a Cat 5 cable

Answer: A

NEW QUESTION 322

- (Exam Topic 1)

Which of the following would allow a network technician to access files on a remote system? (Select TWO).

- A. FTP
- B. TFTP
- C. VLSM
- D. SIP

- E. SMTP
- F. IMAP

Answer: AB

NEW QUESTION 324

- (Exam Topic 1)

A network administrator has had difficulty keeping track of IP address assignments on networking devices and clients recently. Which of the following is the BEST technology to aid in this scenario?

- A. DNS
- B. DHCP
- C. IPAM
- D. NTP

Answer: C

NEW QUESTION 327

- (Exam Topic 1)

According to the OSI model, at which of the following layers is data encapsulated into a packet?

- A. Layer 2
- B. Layer 3
- C. Layer 4
- D. Layer 5
- E. Layer 6

Answer: B

NEW QUESTION 332

- (Exam Topic 1)

Which of the following physical security controls is MOST likely to be susceptible to a false positive?

- A. Identification card
- B. Biometric device
- C. Proximity reader
- D. Video camera

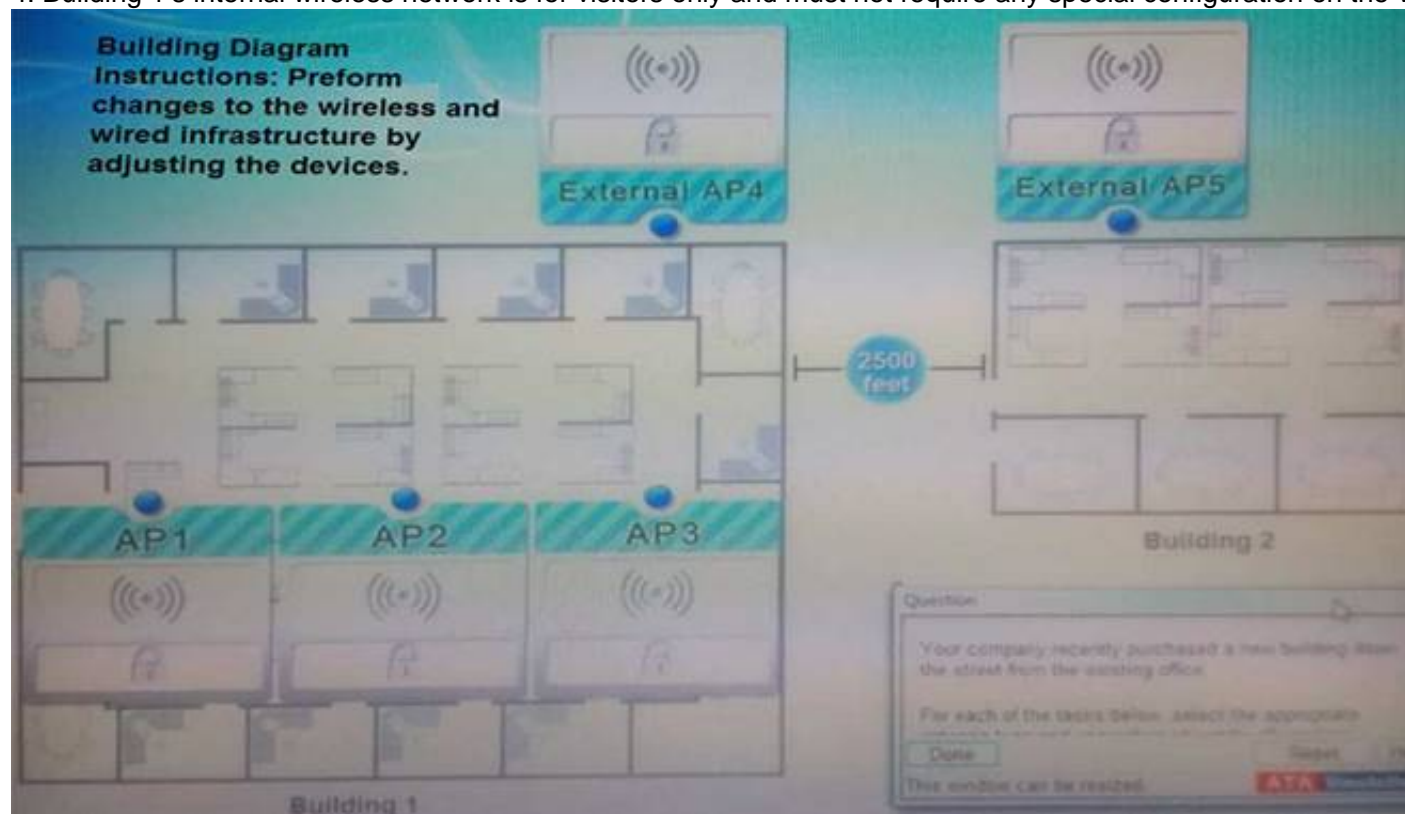
Answer: C

NEW QUESTION 334

- (Exam Topic 1)

Your company recently purchased a new building down the street from the existing office. For each of the tasks below, select the appropriate antenna type and encryption object for all wireless access point (AP).

1. Create an encrypted wireless connection between the two buildings that BEST controls signal propagation, while maximizing security.
2. Restrict the wireless signal generated by the access points (APs) inside Building 1, so that it minimizes broadcast beyond the building.
3. Maximize wireless coverage inside Building 1.
4. Building 1's internal wireless network is for visitors only and must not require any special configuration on the visitor's device to connect.



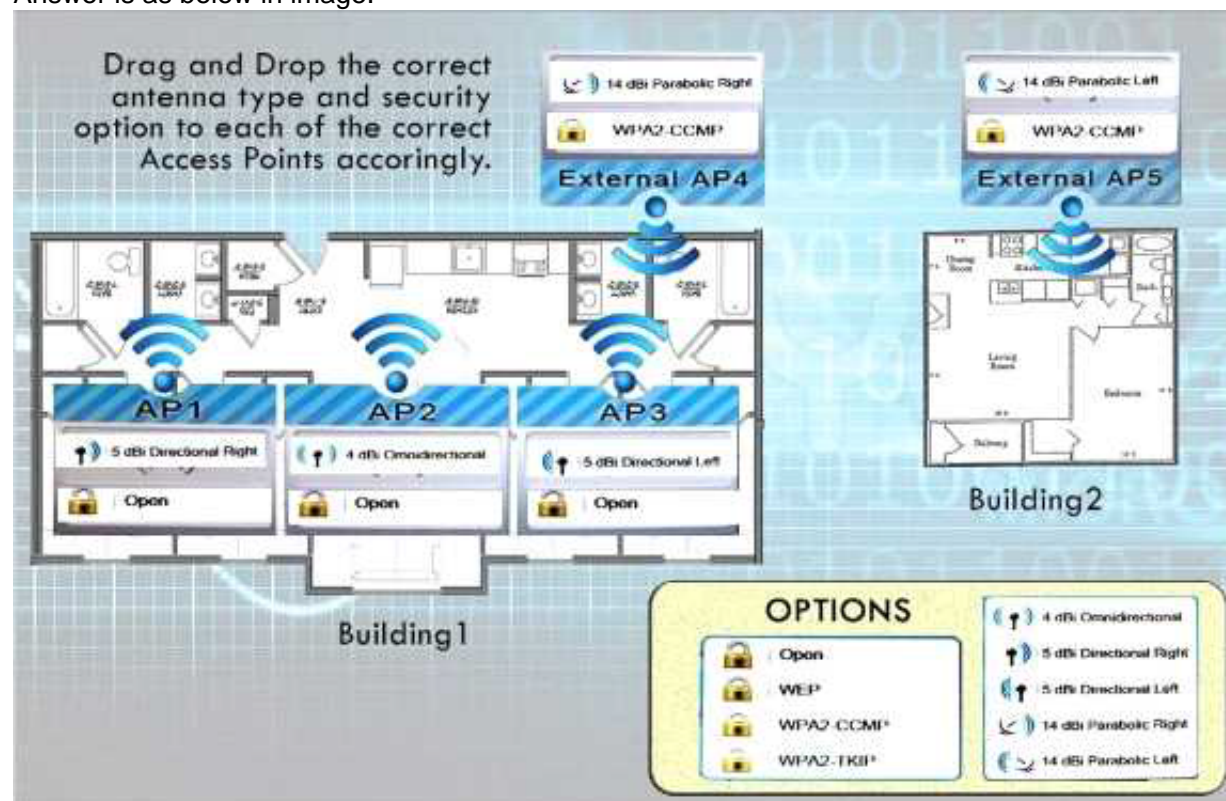
Instructions: When you have completed the simulation, select the Done button to submit.

- A. Mastered
- B. Not Mastered

Answer: A

Explanation:

Answer is as below in image.



NEW QUESTION 337

- (Exam Topic 2)

Which of the following default ports would need to be disabled to block TFTP traffic?

- A. 20
- B. 21
- C. 69
- D. 123

Answer: C

NEW QUESTION 341

- (Exam Topic 2)

Zach, a technician, is installing an 802.11n network. Which of the following should he disable to stop broadcasting the network name?

- A. Channel
- B. WEP
- C. SSID
- D. WPA

Answer: C

NEW QUESTION 344

- (Exam Topic 2)

Which of the following uses port 53 by default?

- A. RDP
- B. QoS
- C. DHCP
- D. DNS

Answer: D

NEW QUESTION 345

- (Exam Topic 2)

The software that allows a machine to run multiple operating systems at once is called the:

- A. Server manager
- B. Hypervisor
- C. Boot loader
- D. Partition manager

Answer: B

NEW QUESTION 349

- (Exam Topic 2)

Which of the following uses types and codes rather than ports?

- A. EIGRP
- B. ICMP
- C. UDP

D. IPv6

Answer: B

NEW QUESTION 353

- (Exam Topic 2)

Which of the following is an IPv6 address?

- A. 00:14:38:05:7B:E5
- B. 10.10.1.1
- C. 192.168.1.1
- D. 2001:cdba::3257:9652

Answer: D

NEW QUESTION 357

- (Exam Topic 2)

Which of the following connector types would Sandy, a network technician, use to connect a serial cable?

- A. RJ-11
- B. BNC
- C. LC
- D. DB-9

Answer: D

NEW QUESTION 362

- (Exam Topic 2)

Which of the following mediums is circuit switched?

- A. PSTN
- B. ATM
- C. Frame relay
- D. MPLS

Answer: A

NEW QUESTION 366

- (Exam Topic 2)

Which of the following cable types have a rated MAXIMUM bandwidth of 100Mbps?

- A. CAT3
- B. CAT5
- C. CAT5e
- D. CAT6

Answer: B

NEW QUESTION 367

- (Exam Topic 2)

Which of the following is true about tunneling and encryption?

- A. SIP encrypts all data going through the tunnel.
- B. PPTP creates a secure tunnel.
- C. SSL VPN provides a secure tunnel.
- D. RAS is a secure way to create a tunnel.

Answer: C

NEW QUESTION 370

- (Exam Topic 2)

A network technician is configuring a wireless network. To avoid interference from other wireless networks in the area, the technician should change which setting?

- A. Channel
- B. SSID
- C. Firewall rule
- D. Encryption

Answer: A

NEW QUESTION 371

- (Exam Topic 2)

A company has just installed wireless in their office. In one corner of the office building users are not able to establish a connection. Which of the following can be changed on the AP to help resolve this issue?

- A. SSID
- B. Channels
- C. Signal strength
- D. Encryption

Answer: C

NEW QUESTION 376

- (Exam Topic 2)

A company has installed an access point and configured it to broadcast at 802.11n only. Some users are stating that they cannot connect to this access point. Which of the following is the MOST likely reason some users cannot connect?

- A. Incorrect channel
- B. Weak encryption
- C. Incompatible NICs
- D. Incorrect SSID

Answer: C

NEW QUESTION 381

- (Exam Topic 2)

A company wants to only allow incoming HTTP and HTTPS traffic on their public wireless network. Which of the following port numbers should be the only allowed open ports on the firewall to accomplish this? (Select TWO).

- A. 20
- B. 80
- C. 143
- D. 443
- E. 8080

Answer: BD

NEW QUESTION 383

- (Exam Topic 2)

Which of the following cables will MOST likely be used to connect to a satellite dish?

- A. RG-6
- B. CAT5e
- C. Fiber
- D. CAT6

Answer: A

NEW QUESTION 384

- (Exam Topic 2)

Which of the following ports would have to be allowed through a firewall to allow SNMP traffic to pass on its default port? (Select TWO).

- A. 22
- B. 23
- C. 143
- D. 161
- E. 162
- F. 8080

Answer: DE

NEW QUESTION 386

- (Exam Topic 2)

Jeff, a network engineer, is troubleshooting an issue where clients are not receiving IP addresses from a new, properly configured DHCP server on another subnet. Statically addressed clients can get onto the same network with no issues. Which of the following is causing the issue?

- A. Incorrect VLAN tagging
- B. Missing helper addresses
- C. Wrong default gateway
- D. Improper routing protocols

Answer: B

NEW QUESTION 389

- (Exam Topic 2)

Which of the following protocols is used to transmit outgoing email?

- A. RDP
- B. NTP
- C. POP3
- D. SMTP

Answer: D

NEW QUESTION 391

- (Exam Topic 2)

Which of the following cables has the MOST twists per inch?

- A. CAT3
- B. CAT5
- C. CAY5e
- D. CAT6

Answer: D

NEW QUESTION 393

- (Exam Topic 2)

Which of the following uses certificates as a form of security?

- A. Kerberos
- B. LDAP
- C. PKI
- D. CHAP

Answer: C

NEW QUESTION 394

- (Exam Topic 2)

Which of the following is used to assign an IP address to a device?

- A. DHCP
- B. NTP
- C. DNS
- D. RADIUS

Answer: A

NEW QUESTION 395

- (Exam Topic 2)

Which of the following defines an IP address that is NOT routed on the Internet?

- A. Multicast
- B. Public
- C. Private
- D. Classful

Answer: C

NEW QUESTION 398

- (Exam Topic 2)

Which of the following operates at OSI layer 2 to forward traffic based on the MAC address?

- A. Switch
- B. Proxy Server
- C. Router
- D. VPN Concetnrator

Answer: A

NEW QUESTION 402

- (Exam Topic 2)

Privilege creep among long-term employees can be mitigated by which of the following procedures?

- A. User permission reviews
- B. Mandatory vacations
- C. Separation of duties
- D. Job function rotation

Answer: A

NEW QUESTION 406

- (Exam Topic 2)

Which of the following protocols would Kurt, a technician, use to synchronize local date and time of a client workstation to that of a server?

- A. RTP
- B. NTP
- C. TFTP

D. ARP

Answer: B

NEW QUESTION 407

- (Exam Topic 2)

Which of the following will allow multiple frequencies to be combined?

- A. WiMAX
- B. MPLS
- C. MIMO
- D. Channel bonding

Answer: D

NEW QUESTION 408

- (Exam Topic 2)

Which of the following defines when Pete, an attacker, attempts to monitor wireless traffic in order to perform malicious activities?

- A. XSS
- B. SQL injection
- C. Directory traversal
- D. Packet sniffing

Answer: D

NEW QUESTION 411

- (Exam Topic 2)

Which of the following routing protocols relies on hop count as its ONLY metric?

- A. BGP
- B. EIGRP
- C. OSPF
- D. RIP

Answer: D

NEW QUESTION 415

- (Exam Topic 2)

Which of the following MUST be used when securing a VoIP network consisting of private IP addresses?

- A. IPS
- B. Application layer firewall
- C. IDS
- D. An unmanaged switch

Answer: B

NEW QUESTION 417

- (Exam Topic 2)

Which of the following is the network topology in which computers connect in a closed circle?

- A. Bus
- B. Mesh
- C. Ring
- D. Star

Answer: C

NEW QUESTION 422

- (Exam Topic 2)

Which of the following is the MOST economical way for Sandy, a technician, to implement 10- Gigabit Ethernet at a datacenter?

- A. 10GBaseLR
- B. 10GBaseSR
- C. 10GBaseX
- D. 10GBaseT

Answer: D

NEW QUESTION 426

- (Exam Topic 2)

When querying a DNS server for an AAAA record, which of the following is an appropriate response?

- A. 192.168.2.1

- B. 00:f3:82:99:a2:b8
- C. 61.23.168.192.in-addr.arpa
- D. 3ffe:1900:4545:3:200:f8ff:fe21:67cf

Answer: D

NEW QUESTION 430

- (Exam Topic 2)

An organization recently installed a firewall on the network. Employees must be able to send and receive email from a POP3 server. In which of the following ways should the firewall be configured? (Select TWO).

- A. Allow TCP port 23
- B. Allow TCP port 25
- C. Allow TCP port 110
- D. Allow UDP port 25
- E. Allow UDP port 110

Answer: BC

NEW QUESTION 431

- (Exam Topic 2)

A technician discovers that a malware infection has damaged part of the Windows TCP/IP stack. Which of the following commands can help repair the damage?

- A. netsh lan
- B. netsh interface
- C. netsh wlan
- D. netsh winsock

Answer: D

NEW QUESTION 434

- (Exam Topic 2)

An administrator is receiving reports from an executive that the executive's wireless access point loses the signal frequently, even though the WAP is on the executive's desk. The office contains four other 802.11n access points. Which of the following would MOST likely correct interference problems in the executive's office?

- A. Turn off SSID broadcasting for the executive's access point
- B. Replace the 802.11n access point in the office with an 802.11a access point.
- C. Change the channel on the access point to channel 11.
- D. Turn off as many lights in the executive's office as possible to reduce interference.

Answer: C

NEW QUESTION 435

- (Exam Topic 2)

Which of the following is the BEST way to mitigate security threats on a network?

- A. Social engineering
- B. User training
- C. Incident response
- D. Man-in-the- middle

Answer: B

NEW QUESTION 437

- (Exam Topic 2)

A pest control contractor attempts to gain access to the datacenter; however, the manager on duty notes that a pest control inspection was not on the schedule. Which of the following attacks is in progress?

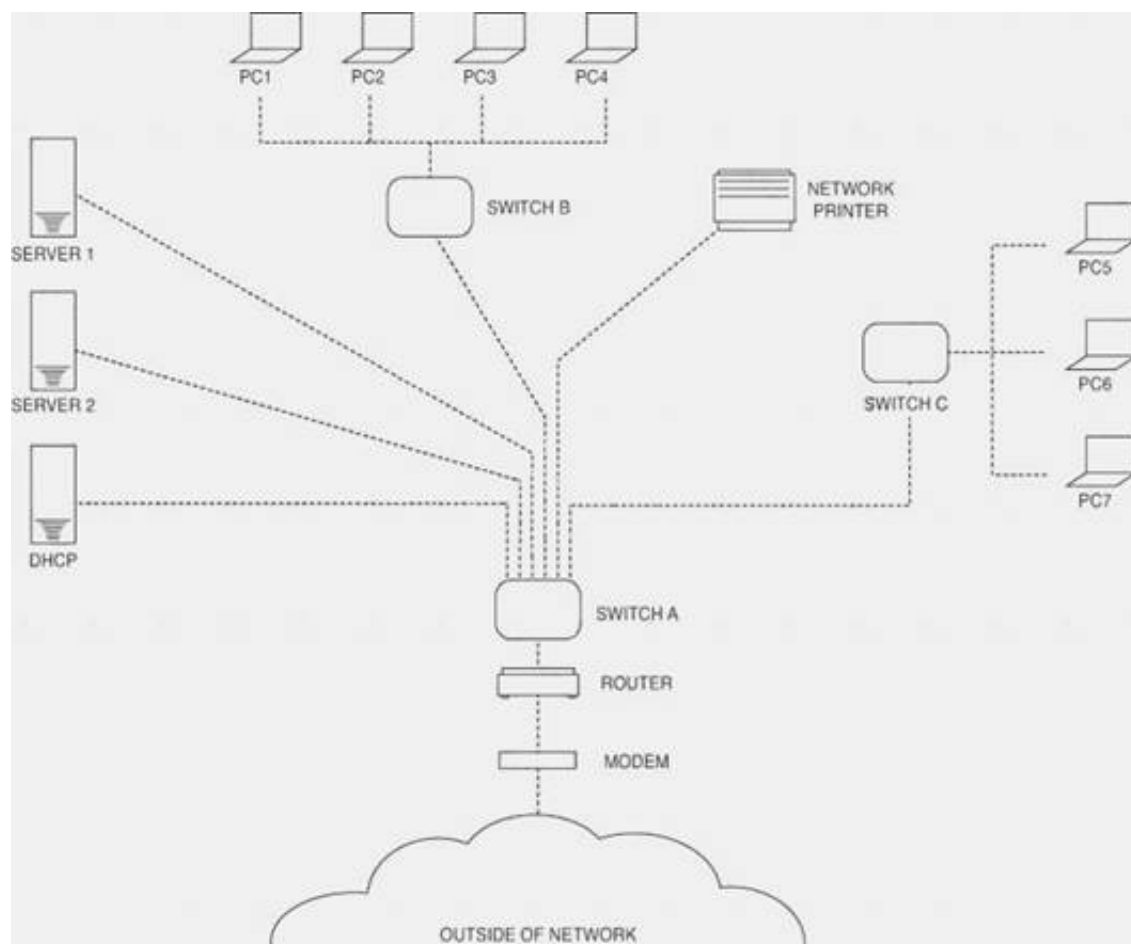
- A. Phishing
- B. Social engineering
- C. Man-in-the-middle
- D. Smurfing

Answer: B

NEW QUESTION 440

- (Exam Topic 2)

Please refer to the attached exhibit. Which of the following types of configuration management documentation is represented?



- A. Network security policy
- B. Network baseline
- C. Logical network diagram
- D. Wiring schematic

Answer: C

NEW QUESTION 442

- (Exam Topic 2)

Which of the following default services uses TCP/UDP port 88?

- A. LDAP
- B. IGMP
- C. HTTP
- D. Kerberos

Answer: D

NEW QUESTION 443

- (Exam Topic 2)

Which of the following is an invalid MAC address?

- A. AA:CE:58:FD:90:08
- B. 44:98:3E:F8:33:23
- C. 56:AD:BX:89:55:54
- D. 94:9E:FE:EE:8C:DF

Answer: C

NEW QUESTION 444

- (Exam Topic 2)

Which of the following network devices restricts traffic based on words, signatures, and URLs?

- A. Layer 2 switch
- B. Content filter
- C. Load balancer
- D. Traffic analyzer

Answer: B

NEW QUESTION 447

- (Exam Topic 2)

Which of the following MUST be kept synchronized in order for Kerberos to work?

- A. Certificate
- B. Ticket
- C. Time
- D. Token

Answer: C

NEW QUESTION 449

- (Exam Topic 2)

Which of the following devices exist as either hardware or software to assist in routing traffic? (Select TWO).

- A. Cable modem
- B. Layer 2 switch
- C. Router
- D. NIDS
- E. Layer 3 switch

Answer: CE

NEW QUESTION 451

- (Exam Topic 2)

Which of the following specifications would Sara, an administrator, implement as a network access control?

- A. 802.1q
- B. 802.3
- C. 802.11n
- D. 802.1x

Answer: D

NEW QUESTION 456

- (Exam Topic 2)

A new firewall was recently installed blocking SMTP traffic. As a result, no one has Internet access. Which of the following has MOST likely occurred?

- A. Port security is blocking all traffic.
- B. An IDS is blocking all traffic.
- C. Implicit deny is blocking all traffic.
- D. SMTP is blocking all traffic.

Answer: C

NEW QUESTION 458

- (Exam Topic 2)

Which of the following is a routed protocol that functions at layer 3 of the OSI model?

- A. IP
- B. Frame relay
- C. PPP
- D. ADSL

Answer: A

NEW QUESTION 463

- (Exam Topic 2)

Which of the following network topologies allows only communication to take place from one node at a time by passing a token around the network?

- A. Star
- B. Mesh
- C. Bus
- D. Ring

Answer: D

NEW QUESTION 468

- (Exam Topic 2)

A username provides which of the following?

- A. Biometrics
- B. Identification
- C. Authorization
- D. Authentication

Answer: B

NEW QUESTION 469

- (Exam Topic 2)

A firewall that operates at Layer 7 of the OSI model is known as a(n):

- A. Circuit gateway
- B. Packet filter
- C. Application level
- D. Redundant firewall

Answer: C

NEW QUESTION 471

- (Exam Topic 2)

A technician, Joe, visits a site that has reported a network down emergency. He immediately reboots the switches and the router since the network is down. Which of the following network troubleshooting methodology steps should Joe have performed FIRST?

- A. Determine if anything has changed
- B. Once a theory is confirmed determine the next step is to resolve the problem
- C. Implement the solution or escalate as necessary
- D. Question the obvious

Answer: A

NEW QUESTION 472

- (Exam Topic 2)

Which of the following ports should be allowed through a firewall to allow DNS resolution to occur to an outside DNS server?

- A. 20
- B. 53
- C. 80
- D. 3389

Answer: B

NEW QUESTION 476

- (Exam Topic 2)

An administrator is replacing an existing WAP because the customer is reporting that the connection speeds are too slow. Which of the following should be installed?

- A. 802.11a
- B. 802.11b
- C. 802.11g
- D. 802.11n

Answer: D

NEW QUESTION 478

- (Exam Topic 2)

Which of the following ports are MOST commonly used to interactively configure a networking device? (Select TWO).

- A. 21
- B. 22
- C. 23
- D. 53
- E. 67

Answer: BC

NEW QUESTION 479

- (Exam Topic 2)

The Transport Layer of the TCP/IP model corresponds to which of the following layers of the OSI model?

- A. 1
- B. 3
- C. 4
- D. 5

Answer: C

NEW QUESTION 481

- (Exam Topic 2)

A technician has replaced the Internet gateway router, and now no users can reach the Internet. The technician can ping the router Ethernet port but not the ISP's router IP address. Which of the following is the MOST likely problem?

- A. Faulty crossover cable
- B. DNS server is down
- C. Switching loop
- D. Outside interface shutdown

Answer: D

NEW QUESTION 483

- (Exam Topic 2)

Which of the following could be used to stop unknown threats?

- A. DMZ
- B. Signature based IPS
- C. Behavior based IPS
- D. Honey pots

Answer: C

NEW QUESTION 485

- (Exam Topic 2)

Which of the following DNS records would allow for a website to have more than one FQDN?

- A. TXT
- B. PTR
- C. MX
- D. CNAME

Answer: D

NEW QUESTION 490

- (Exam Topic 2)

Which of the following would Sandy, a technician, find in a network map?

- A. QoS standards
- B. MDF/IDFs
- C. System logs
- D. Firewall rules

Answer: B

NEW QUESTION 491

- (Exam Topic 2)

Which of the following describes a DNS server?

- A. Translates an IP address to a name
- B. Caches commonly viewed web pages
- C. Assigns IP addresses to network devices
- D. Provides port security for a network

Answer: A

NEW QUESTION 492

- (Exam Topic 2)

Which of the following protocols uses port 3389?

- A. IMAP
- B. DHCP
- C. SSH
- D. RDP

Answer: D

NEW QUESTION 495

- (Exam Topic 3)

Which of the following BEST describes the difference between layer 2 switching and layer 2 routing?

- A. Switching moves packets between hosts on different subnets, and routing moves packets between hosts on the same subnet.
- B. Routing moves packets between hosts on different subnets, and switching moves packets between hosts on the same subnet.
- C. Both routing and switching move packets between hosts on the same subnet, but routing does so at a faster pace.
- D. Both routing and switching move packets between hosts on different subnets, but switching does so at a faster pace.

Answer: B

NEW QUESTION 498

- (Exam Topic 3)

A new monitoring device is installed in the network that uses ping to determine whether critical network Internet routers are up. After three missing pings, the alarm reports the device is down. The device is now constantly reporting alarms, yet there are no reported Internet problems from users. Which of the following is the MOST likely cause?

- A. A missing route on the alarm device.
- B. Incorrect VLAN assignment on the router.
- C. A missing route on the network routers.
- D. Incorrect speed/duplex setting on the alarm device.

Answer: D

NEW QUESTION 501

- (Exam Topic 3)

When configuring a wireless access point, Zach, a network administrator, needs to determine the MAC address of a local printer. Which of the following commands would be MOST helpful in determining the MAC address?

- A. ping
- B. arp
- C. route
- D. dig

Answer: B

NEW QUESTION 503

- (Exam Topic 3)

A user has no network connectivity. Jeff, the network technician, is unable to locate the CAT5e cable from the user at the IDF. Which of the following tools would be used to assist Jeff in locating the CAT5e cable?

- A. Butt set
- B. Punch down tool
- C. Toner probe
- D. Protocol analyzer

Answer: C

NEW QUESTION 505

- (Exam Topic 3)

A company is experiencing accessibility issues reaching services on a cloud-based system. Which of the following monitoring tools should be used to locate possible outages?

- A. Network analyzer
- B. Packet analyzer
- C. Protocol analyzer
- D. Network sniffer

Answer: A

Explanation:

A network analyzer is a useful tool, helping you do things like track traffic and malicious usage on the network.

NEW QUESTION 508

- (Exam Topic 3)

Zach, a technician, discovers a switch is not communicating with the other switches in a stack. Which of the following is the MOST likely cause?

- A. Both T568A and T568B standards are being used.
- B. STP is disabled.
- C. The cable is not a crossover.
- D. The port is not trunked.

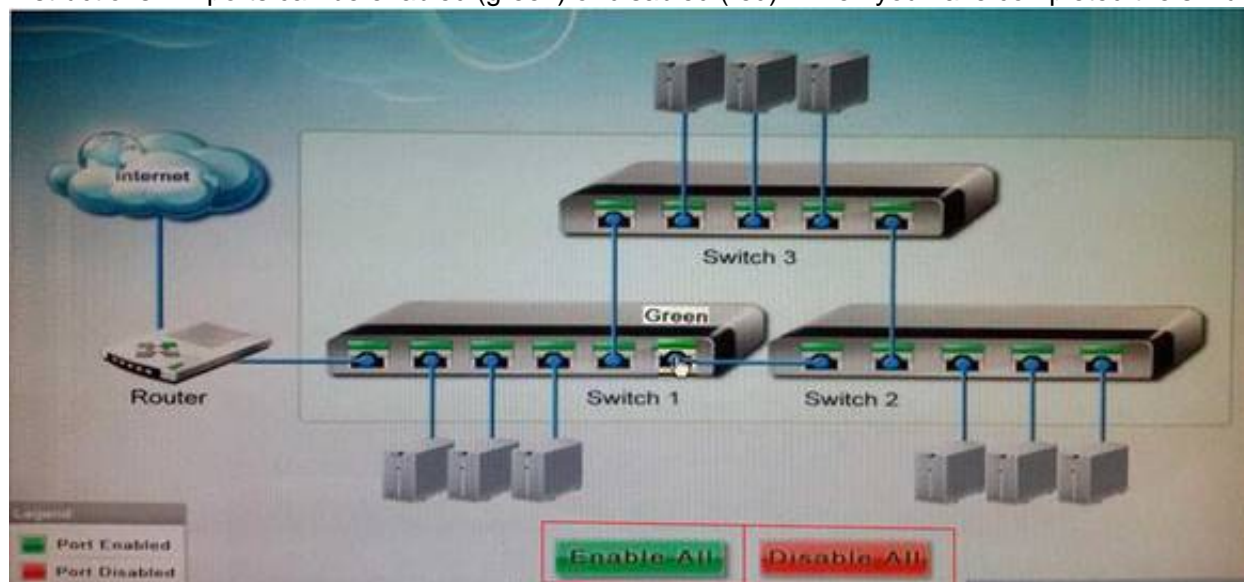
Answer: C

NEW QUESTION 511

- (Exam Topic 3)

Workstations are unable to access the Internet after a recent power outage. Configure the appropriate devices to ensure ALL workstations have Internet connectivity.

Instructions: All ports can be enabled (green) or disabled (red). When you have completed the simulation please select the Done button.



- A. Mastered
- B. Not Mastered

Answer: A

Explanation:

All ports should be enabled.

NEW QUESTION 515

- (Exam Topic 3)

Which of the following does the IP address 169.254.222.10 indicate?

- A. No DHCP server connectivity
- B. The DNS server is unavailable
- C. Firewall issue
- D. Duplicate IP addresses are found

Answer: A

NEW QUESTION 518

- (Exam Topic 3)

A customer has not been using security on a wireless network and has recently received many attacks through this vector.

Which of the following would be the MOST secure way to harden this wireless network?

- A. Disable the SSID
- B. WPA encryption
- C. VLAN implementation
- D. WEP encryption

Answer: B

NEW QUESTION 519

- (Exam Topic 3)

Which of the following should be implemented in a networked environment carrying teleconferencing packets?

- A. L2TP
- B. SSH
- C. QoS
- D. SNMP

Answer: C

NEW QUESTION 523

- (Exam Topic 3)

Jeff, a network technician, is installing a wireless router. Which of the following should Jeff consider to get the BEST signal strength?

- A. WAP placement
- B. PoE devices
- C. MAC filtering
- D. Encryption type

Answer: A

NEW QUESTION 526

- (Exam Topic 3)

A network technician is installing a simple SOHO router with wireless functionality. Which of the following wireless encryption standards would be BEST suited for the HIGHEST level of security?

- A. WPA2
- B. WPA
- C. WEP64
- D. WEP128

Answer: A

NEW QUESTION 530

- (Exam Topic 3)

Which of the following DNS records allows for reverse lookup of a domain?

- A. PTR
- B. AAAA
- C. A
- D. MX

Answer: A

NEW QUESTION 532

- (Exam Topic 3)

Which of the following tools can the technician use to analyze TCP/IP packets when trying to determine a connection problem within a subnet?

- A. Wire mapper
- B. Protocol analyzer

- C. Cable tester
- D. SYSLOG server

Answer: B

NEW QUESTION 533

- (Exam Topic 3)

Zach, a technician, is checking newly installed CAT5e cabling, and suspects that some of the ends were not properly terminated. Which of the following tools will verify this?

- A. Cable tester
- B. Toner probe
- C. OTDR
- D. Loopback plug

Answer: A

NEW QUESTION 538

- (Exam Topic 3)

Which of the following methods limits access to a network based on characteristics of the network card?

- A. IP filtering
- B. MAC filtering
- C. Port filtering
- D. Encryption

Answer: B

NEW QUESTION 542

- (Exam Topic 3)

Zach, a technician, needs to terminate a CAT5e Ethernet cable to a 110 block. Which of the following tools should he use?

- A. Toner probe
- B. Punch down
- C. Wire tester
- D. Crimper

Answer: B

NEW QUESTION 547

- (Exam Topic 3)

Lisa, a network technician, needs to introduce a few more cables to the existing patch panel. Which of the following tools would she use?

- A. OTDR
- B. Multimeter
- C. Punch down tool
- D. Temperature monitor

Answer: C

NEW QUESTION 550

- (Exam Topic 3)

Which of the following solutions will detect and disable a rogue access point?

- A. Port scan
- B. Packet sniffer
- C. IPS
- D. IDS

Answer: C

NEW QUESTION 555

- (Exam Topic 3)

An administrator has received a recommendation against deploying WEP as a wireless encryption protection scheme. Which of the following is MOST likely the reason?

- A. WEP's IV is too small.
- B. WEP uses RC4 which is easily accessible and not secure.
- C. WEP uses plain text.
- D. WEP is not well supported.

Answer: A

NEW QUESTION 556

- (Exam Topic 3)

Zach, a network administrator, needs to purchase a new switch to support VoIP phones and wireless access points in a new building. Which of the following features are the MOST important for the new switch to support?

- A. PoE and QoS
- B. LACP and OSPF
- C. 802.1x and 802.11n
- D. NAT and VTP

Answer: A

NEW QUESTION 557

- (Exam Topic 3)

A Windows server has a problem after booting up. Kim, a technician, should immediately check the:

- A. history logs.
- B. cron logs.
- C. application logs.
- D. system logs.

Answer: D

NEW QUESTION 561

- (Exam Topic 3)

A technician notices that network access is becoming increasingly slow. All of the activity lights, on the only network layer 2 switch, are blinking at steadily increasing rates. Which of the following is the MOST likely cause of the increased traffic?

- A. STP blocking
- B. IP addresses
- C. MTU mismatch
- D. Switching loop

Answer: D

NEW QUESTION 566

- (Exam Topic 3)

Lisa, an administrator, has set up an 802.11n wireless network. Users with 802.11n laptops have reported that speeds are slow. After testing, Lisa determines that users max out at 802.11g speeds. Which of the following would MOST likely fix this issue?

- A. Enable wireless multimedia (WMM) for QoS
- B. Use the 40MHz channels in the 2.4GHz band
- C. Enable access point antenna isolation
- D. Limit the clients to 802.11g compatible laptops

Answer: A

NEW QUESTION 567

- (Exam Topic 3)

Which of the following communication modes has the LOWEST overhead necessary to support streaming protocols such as RTP?

- A. Connectionless
- B. Stateful
- C. Full Duplex
- D. Quality of Service

Answer: A

NEW QUESTION 568

- (Exam Topic 3)

A SOHO with ten Wi-Fi equipped laptops needs a new network installed. Which of the following items would be used to setup the office using a new DSL line? (Select TWO).

- A. Router
- B. Wi-Fi Access point
- C. Cable modem
- D. Ten WiMAX adapters
- E. Ten CAT6 patch cables

Answer: AB

NEW QUESTION 569

- (Exam Topic 3)

Which of the following protocols are used for accessing a command line terminal session for management purposes? (Select TWO).

- A. Telnet
- B. FTP
- C. SNMP
- D. SSH

E. RDP

Answer: AD

NEW QUESTION 574

- (Exam Topic 3)

A company has attempted to introduce a new major network segment to allow growth in capacity. On the core switch, a GBIC was used to interconnect with a newly placed downstream distribution switch for the first time. Soon after this implementation, a network flood and an outage occurred between the core and new distribution network modules. Which of the following should the network administrator troubleshoot FIRST in order to rectify the issue?

- A. Check for switching loops between core and distribution switches.
- B. Check whether an incorrect VLAN has been assigned to the new distribution switch.
- C. Check for inconsistent or missing routes between the core and distribution switches.
- D. Check whether the GBIC was set to multi-mode instead of single-mode SFP.

Answer: A

NEW QUESTION 578

- (Exam Topic 3)

A user is getting very weak signals while trying to connect to the wireless. Which of the following should the user do to help with signal strength?

- A. Call the wireless provider and ask for a T3 circuit.
- B. Move the wireless router to a better location where line of sight is obtained.
- C. Reinstall the operating system to the PC to ensure the newest patches are installed.
- D. Install a hub to ensure there is a clear path for the cables to run.

Answer: B

NEW QUESTION 580

- (Exam Topic 3)

When configuring a WAP for a SOHO, which parameter will BEST limit access to the office area?

- A. Signal strength
- B. SSID enable
- C. Encryption
- D. Password hardening

Answer: A

NEW QUESTION 581

- (Exam Topic 3)

A SOHO office recently installed a wireless network for employees to use during lunch breaks. As such, the access point was placed in the kitchen area by the microwave. Employees have been reporting intermittent connectivity when using the wireless network. Which of the following would BEST improve connectivity?

- A. Disable SSID broadcast
- B. Increase the signal strength
- C. Move the access point
- D. Change the broadcast channel

Answer: C

NEW QUESTION 584

- (Exam Topic 3)

Zach, a network technician, is configuring several switches to be managed remotely. Which of the following must be configured to connect via SSH to each of those devices, as well as to retrieve various parameters?

- A. PoE settings and VTP configuration
- B. SNMP configuration only
- C. IP address and SNMP configuration
- D. QoS and PoE settings

Answer: C

NEW QUESTION 586

- (Exam Topic 3)

A network technician wants to baseline traffic flows on a specific network. Which of the following will provide the GREATEST level of detail?

- A. Network flow information
- B. SNMP traps
- C. Debug level syslog
- D. Protocol analyzer

Answer: D

NEW QUESTION 588

- (Exam Topic 3)

A technician replaces a customer's router, and is now unable to ping the ISP's gateway. Which of the following should the technician check?

- A. The arp table of the new customer's router.
- B. The route table of the next-hop router.
- C. The route table of the new customer's router.
- D. The arp table of a network user.

Answer: C

NEW QUESTION 591

- (Exam Topic 3)

company wants the public to be able to connect to the wireless network with minimal security, but not be able to connect to the private internal network. Which of the following firewall rules would BEST accomplish this?

- A. Content filtering on the wireless access point
- B. Allow traffic from the wireless access point
- C. Block traffic from the wireless access point
- D. Packet filtering on the wireless access point

Answer: C

NEW QUESTION 595

- (Exam Topic 3)

Which of the following devices can be used to offload outbound web server SSL encryption overhead?

- A. NIPS
- B. Proxy server
- C. Content filter
- D. VPN connector

Answer: B

NEW QUESTION 600

- (Exam Topic 3)

An 801.11g wireless access point was configured as follows:

- AP encryption forced to WPA2-AES mode only
- MAC address filtering enabled with the following MAC address in the allow list: 00-ab-29-da-c3-40 Which is true about the above configuration?

- A. Any 802.11b/g compatible client can connect to the wireless network if they support TKIP, the MAC address is 00-ab-29-da-c3-40, and the encryption key is known by the client.
- B. An 802.11a compatible client can connect to the wireless network only if its MAC address is 00- ab-29-da-c3-40 and the encryption key is known by the client.
- C. An 802.11n compatible client can connect to the wireless network only if its MAC address is 00- ab-29-da-c3-40 and the encryption key is known by the client.
- D. Any 802.11g compatible client can connect to the wireless network if the encryption key is known by the client.

Answer: C

NEW QUESTION 601

- (Exam Topic 3)

Which of the following media types can carry a standard Ethernet signal for network connectivity?

- A. USB
- B. PArallel
- C. Serial
- D. CAT6

Answer: D

NEW QUESTION 605

- (Exam Topic 3)

Which of the following technologies allows more than two transceivers with an access point?

- A. MIMO
- B. FIFO
- C. 802.1x
- D. WPA

Answer: A

NEW QUESTION 610

- (Exam Topic 3)

A network technician needs to install an additional access point to the company's wireless network. The network has two 802.11b access points. Which of the following channels should be used to allow the access point's coverage areas to overlap?

- A. 1, 6, 11
- B. 2, 5, 10
- C. 3, 13, 23

D. 4, 8, 16

Answer: A

NEW QUESTION 615

- (Exam Topic 3)

The network optimization process used to allow reasonable use of data, voice, and video on the same network infrastructure is called:

- A. CARP
- B. QoS
- C. Traffic shaping.
- D. Fault tolerance.

Answer: B

NEW QUESTION 618

- (Exam Topic 3)

Which of the following could be used to estimate RTT across a router?

- A. Dig
- B. Traceroute
- C. Arp
- D. Uptime

Answer: B

NEW QUESTION 621

- (Exam Topic 3)

Lisa, a consultant, is inspecting an office that reports frequent wireless issues. Upon scanning the network broadcasting in the vicinity of the office, seven SSIDs are found. The company's Wi-Fi network and three others all share channel six. Which of the following is MOST likely causing the issue?

- A. Frequency interference
- B. Low signal strength
- C. Standard mismatch
- D. Incorrect channel

Answer: A

NEW QUESTION 623

- (Exam Topic 3)

A supervisor requests that a technician downloads a MIB for a particular server. Which of the following protocols requires MIBs?

- A. IPSec
- B. SSL
- C. ISAKMP
- D. SNMP

Answer: D

NEW QUESTION 624

- (Exam Topic 3)

A customer wishes to network several computers throughout a large warehouse containing numerous metal shelves and concrete walls. The computers are at least 175 meters (574 feet) apart. Which of the following media types should be recommended for the customer using only a single switch?

- A. Fiber optic
- B. Wireless
- C. CAT5e
- D. CAT3

Answer: A

NEW QUESTION 627

- (Exam Topic 3)

A user reports a network failure on a computer. The technician determines that the computer and NIC are operating properly. Which of the following tools can the technician use to trace the network cabling back to the punch down block?

- A. Protocol analyzer
- B. Multimeter
- C. Punch down tool
- D. Toner probe

Answer: D

NEW QUESTION 628

- (Exam Topic 3)

A user wants a SOHO network to be protected from unauthorized users hacking their network. Which of the following should be implemented to aide in this matter?

- A. VPN
- B. Throughput tester
- C. Firewall
- D. OC3

Answer: C

NEW QUESTION 630

- (Exam Topic 3)

A network technician receives a call from a branch office about a problem with its wireless connectivity. The user states the office hosting a large meeting that includes some online training with local businesses. The guest users have all brought devices to connect to the guest network at the branch office. All users are connected to a single WAP and are reporting that connections dropping and network speeds are unusable. Which of the following is the MOST likely cause of this issue?

- A. DHCP exhaustion
- B. Chanel overlapping
- C. Interference
- D. Overcapacity

Answer: C

NEW QUESTION 635

- (Exam Topic 3)

A network administrator has created a virtual machine in the cloud. The technician would like to connect to the server remotely using RDP. Which of the following default ports needs to be opened?

- A. 445
- B. 3389
- C. 5004
- D. 5060

Answer: B

NEW QUESTION 639

- (Exam Topic 3)

Which of the following will prevent switching loops by selectively shutting down switch ports?

- A. RIP
- B. IGP
- C. STP
- D. VLAN

Answer: C

NEW QUESTION 641

- (Exam Topic 3)

Which of the following protocols is used to allow multiple hosts to share a common IP address?

- A. HTTPS
- B. ARP
- C. CARP
- D. NAT

Answer: D

NEW QUESTION 642

- (Exam Topic 3)

Which of the following diagnostic commands relies on proper forwarding of ICMP ECHO packets?

- A. ipconfig
- B. ping
- C. route
- D. nbstat

Answer: B

NEW QUESTION 646

- (Exam Topic 3)

Which of the following occurs when antenna gain is increased on an access point?

- A. Connection speeds decrease
- B. Throughput decreases
- C. Cell size increases
- D. Attenuation increases

Answer: C

NEW QUESTION 648

- (Exam Topic 3)

No link lights on a switch's SFP are functioning, so the network technician re-terminates the end. After testing the cable, the tester is showing a db loss of -9. Which of the following types of cable is MOST likely being tested?

- A. Fiber
- B. CAT3
- C. CAT5e
- D. CAT6a

Answer: A

NEW QUESTION 650

- (Exam Topic 3)

An administrator is troubleshooting analog telephony issues on the punch down block. Which of the following tools would be MOST useful in this scenario?

- A. T1 loopback
- B. Butt set
- C. Multimeter
- D. Protocol analyzer

Answer: B

NEW QUESTION 655

- (Exam Topic 3)

Jeff, a technician, is charged with setting up network monitoring for critical devices in the network. It is important the information be sent securely to the monitoring station. Which of the following protocols will support secure transmission of the data?

- A. SNMP v2
- B. VPN
- C. SYSLOG
- D. SMTP

Answer: A

NEW QUESTION 656

- (Exam Topic 3)

A junior technician is settings up a voice control device so the Chief Executive Officer (CEO) will able to control various things in the office. Of which of the following types of the IoT technologies is this an example?

- A. LAN
- B. WAN
- C. SAN
- D. PAN

Answer: B

NEW QUESTION 660

- (Exam Topic 3)

Jeff, a user, is having a problem with a POTS line. Which of the following tools would Jeff use to make sure the phone lines have a dial tone?

- A. Loopback plugs
- B. Butt set
- C. Cable certifier
- D. Toner probe

Answer: B

NEW QUESTION 661

- (Exam Topic 3)

A mobile user is no longer able to access network resources. Jeff, the network technician, is unable to ping the user's workstation. Which of the following commands would MOST likely be used on that workstation to verify its current network settings?

- A. net share
- B. hostname
- C. ipconfig
- D. tracert

Answer: C

NEW QUESTION 663

- (Exam Topic 3)

Kim, a user, cannot access the network using wireless. Which of the following is MOST likely the cause?

- A. TXRX is reversed
- B. Faulty crossover cable
- C. Incorrect WEP key
- D. A short in the cable pairs

Answer: C

NEW QUESTION 668

- (Exam Topic 3)

Keeping an authoritative and timely record of network devices and their settings is a key activity of which of the following?

- A. Project management
- B. Quality of service
- C. Configuration management
- D. Bandwidth shaping

Answer: C

NEW QUESTION 670

- (Exam Topic 3)

A technician needs to limit the amount of broadcast traffic on a network and allow different segments to communicate with each other. Which of the following options would satisfy these requirements?

- A. Add a router and enable OSPF.
- B. Add a layer 3 switch and create a VLAN.
- C. Add a bridge between two switches.
- D. Add a firewall and implement proper ACL.

Answer: B

Explanation:

We can limit the amount of broadcast traffic on a switched network by dividing the computers into logical network segments called VLANs.

A virtual local area network (VLAN) is a logical group of computers that appear to be on the same LAN even if they are on separate IP subnets. These logical subnets are configured in the network switches. Each VLAN is a broadcast domain meaning that only computers within the same VLAN will receive broadcast traffic.

To allow different segments (VLAN) to communicate with each other, a router is required to establish a connection between the systems. We can use a network router to route between the VLANs or we can use a 'Layer 3' switch. Unlike layer 2 switches that can only read the contents of the data-link layer protocol header in the packets they process, layer 3 switches can read the (IP) addresses in the network layer protocol header as well.

NEW QUESTION 673

- (Exam Topic 3)

Several users from the same building are reporting connectivity issues. The SFP at that building's IDF switch is showing a link light, but there is no link light to the corresponding switch's SFP at the MDF. Which of the following is the MOST likely cause?

- A. A crossover cable is being used.
- B. DB loss is too high on all strands.
- C. Only TX or RX strand is working.
- D. TX and RX are reversed.

Answer: C

NEW QUESTION 677

- (Exam Topic 3)

A company is having a new T1 line installed. Which of the following will the connection MOST likely terminate to?

- A. Core switch
- B. MDF
- C. Ethernet router
- D. IDF

Answer: B

NEW QUESTION 680

- (Exam Topic 3)

A network technician at a small office upgrades the VLAN switch. After the upgrade, a user reports being unable to access network resources. When the technician checks the switchport, the LED light is not lit. Which of the following should technician check FIRST?

- A. The device is using the correct cable type.
- B. The switchport is functioning properly.
- C. The device is connected to the switch.
- D. The switch is connected to the router.

Answer: C

NEW QUESTION 685

- (Exam Topic 3)

Which of the following devices is used to distribute network traffic equally over multiple links?

- A. Content filter
- B. DNS server
- C. Load balancer
- D. Proxy server

Answer: C

NEW QUESTION 688

- (Exam Topic 3)

A technician is surveying college's network equipment room and connectivity. Which of the following types of documentation does the technician need perform a detailed site survey? (Select THREE).

- A. IDF/MDF documentation
- B. Cable run label documentation
- C. network configuration documentation
- D. Performance baseline documentation
- E. Standard operating procedure documentation
- F. Change management documentation
- G. Rack diagram documentation

Answer: ACG

NEW QUESTION 692

.....

Thank You for Trying Our Product

We offer two products:

1st - We have Practice Tests Software with Actual Exam Questions

2nd - Questions and Answers in PDF Format

N10-007 Practice Exam Features:

- * N10-007 Questions and Answers Updated Frequently
- * N10-007 Practice Questions Verified by Expert Senior Certified Staff
- * N10-007 Most Realistic Questions that Guarantee you a Pass on Your First Try
- * N10-007 Practice Test Questions in Multiple Choice Formats and Updates for 1 Year

100% Actual & Verified — Instant Download, Please Click
[Order The N10-007 Practice Test Here](#)