

## 1Z0-071 Dumps

### Oracle Database 12c SQL

<https://www.certleader.com/1Z0-071-dumps.html>



**NEW QUESTION 1**

In which normal form is a table, if it has no multi-valued attributes and no partial dependencies?

- A. second normal form
- B. first normal form
- C. third normal form
- D. fourth normal form

**Answer:** A

**Explanation:**

References:

<https://blog.udemy.com/database-normal-forms/>

**NEW QUESTION 2**

Evaluate the following SQL statements that are issued in the given order:

```
CREATE TABLE emp
```

```
(emp_no NUMBER(2) CONSTRAINT emp_emp_no_pk PRIMARY KEY, ename VARCHAR2(15),
```

```
salary NUMBER (8,2),
```

```
mgr_no NUMBER(2) CONSTRAINT emp_mgr_fk REFERENCES emp(emp_no)); ALTER TABLE emp
```

```
DISABLE CONSTRAINT emp_emp_no_pk CASCADE; ALTER TABLE emp
```

```
ENABLE CONSTRAINT emp_emp_no_pk;
```

What would be the status of the foreign key EMP\_MGR\_PK?

- A. It would remain disabled and can be enabled only by dropping the foreign key constraint and recreating it.
- B. It would remain disabled and has to be enabled manually using the ALTER TABLE command.
- C. It would be automatically enabled and immediate.
- D. It would be automatically enabled and deferred.

**Answer:** B

**NEW QUESTION 3**

You must write a query that prompts users for column names and conditions every time it is executed. (Choose the best answer.)

The user must be prompted only once for the table name. Which statement achieves those objectives?

- A. `SELECT &col1, '&col2'FROM &tableWHERE &&condition = '&cond';`
- B. `SELECT &col1, &col2 FROM "&table"WHERE &condition =&cond;`
- C. `SELECT &col1, &col2 FROM &&tableWHERE &condition = &cond;`
- D. `SELECT &col1, &col2 FROM &&tableWHERE &condition = &&cond`

**Answer:** C

**NEW QUESTION 4**

You issue this command which succeeds: `SQL> DROP TABLE products;`

Which three statements are true?

- A. All existing views and synonyms that refer to the table are invalidated but retained.
- B. Any uncommitted transaction in the session is committed.
- C. Table data and the table structure are deleted.
- D. All the table's indexes if any exist, are invalidated but retained.
- E. Table data is deleted but the table structure is retained.

**Answer:** BCD

**NEW QUESTION 5**

Which three statements are true regarding subqueries?

- A. Multiple columns or expressions can be compared between the main query and subquery.
- B. Subqueries can contain ORDER BY but not the GROUP BY clause.
- C. Main query and subquery can get data from different tables.
- D. Subqueries can contain GROUP BY and ORDER BY clauses.
- E. Main query and subquery must get data from the same tables.
- F. Only one column or expression can be compared between the main query and subquery.

**Answer:** ACD

**Explanation:**

References:

<http://docs.oracle.com/javadb/10.6.2.1/ref/rrefsqlj13658.html>

**NEW QUESTION 6**

You are designing the structure of a table in which two columns have the specifications:

COMPONENT\_ID – must be able to contain a maximum of 12 alphanumeric characters and uniquely identify the row

EXECUTION\_DATETIME – contains Century, Year, Month, Day, Hour, Minute, Second to the maximum precision and is used for calculations and comparisons between components.

Which two options define the data types that satisfy these requirements most efficiently?

- A. The EXECUTION\_DATETIME must be of INTERVAL DAY TO SECOND data type.
- B. The EXECUTION\_DATETIME must be of TIMESTAMP data type.
- C. The EXECUTION\_DATETIME must be of DATE data type.
- D. The COMPONENT\_ID must be of ROWID data type.
- E. The COMPONENT\_ID must be of VARCHAR2 data type.
- F. The COMPONENT\_ID column must be of CHAR data type.

**Answer:** CF

#### NEW QUESTION 7

Which two statements are true regarding the COUNT function?

- A. A SELECT statement using the COUNT function with a DISTINCT keyword cannot have a WHERE clause.
- B. COUNT (DISTINCT inv\_amt) returns the number of rows excluding rows containing duplicates and NULL values in the INV\_AMT column.
- C. COUNT (cust\_id) returns the number of rows including rows with duplicate customer IDs and NULL value in the CUST\_ID column.
- D. COUNT (\*) returns the number of rows including duplicate rows and rows containing NULL value in any of the columns.
- E. The COUNT function can be used only for CHAR, VARCHAR2, and NUMBER data types.

**Answer:** BD

#### NEW QUESTION 8

View the exhibit and examine the structure of the CUSTOMERS table.

Table CUSTOMERS		
Name	Null?	Type
CUST_ID	NOT NULL	NUMBER
CUST_FIRST_NAME	NOT NULL	VARCHAR2 (20)
CUST_LAST_NAME	NOT NULL	VARCHAR2 (40)
CUST_GENDER	NOT NULL	CHAR (1)
CUST_YEAR_OF_BIRTH	NOT NULL	NUMBER (4)
CUST_MARITAL_STATUS		VARCHAR2 (20)
CUST_STREET_ADDRESS	NOT NULL	VARCHAR2 (40)
CUST_POSTAL_CODE	NOT NULL	VARCHAR2 (10)
CUST_CITY	NOT NULL	VARCHAR2 (30)
CUST_STATE_PROVINCE	NOT NULL	VARCHAR2 (40)
COUNTRY_ID	NOT NULL	NUMBER
CUST_INCOME_LEVEL		VARCHAR2 (30)
CUST_CREDIT_LIMIT		NUMBER
CUST_EMAIL		VARCHAR2 (30)

Which two tasks would require subqueries or joins to be executed in a single statement?

- A. finding the number of customers, in each city, whose credit limit is more than the average credit limit of all the customers
- B. finding the average credit limit of male customers residing in 'Tokyo' or 'Sydney'
- C. listing of customers who do not have a credit limit and were born before 1980
- D. finding the number of customers, in each city, who's marital status is 'married'.
- E. listing of those customers, whose credit limit is the same as the credit limit of customers residing in the city 'Tokyo'.

**Answer:** AE

#### NEW QUESTION 9

You must display details of all users whose username contains the string 'ch\_'. (Choose the best answer.) Which query generates the required output?

- A. SELECT \* FROM users Where user\_name LIKE '%ch\_';
- B. SELECT \* FROM usersWhere user\_name LIKE '%ch\_\'ESCAPE'%';
- C. SELECT \* FROM users Where user\_name LIKE 'ch\\_%' ESCAPE '\_';
- D. SELECT \* FROM users Where user\_name LIKE '%ch\\_%' ESCAPE '\';

**Answer:** B

#### NEW QUESTION 10

Which two statements are true regarding constraints?

- A. A foreign key column cannot contain null values.
- B. A column with the UNIQUE constraint can contain null values.
- C. A constraint is enforced only for INSERT operation on the table.
- D. A constraint can be disabled even if the constraint column contains data.
- E. All constraints can be defined at the column level and at the table level.

**Answer:** BD

#### NEW QUESTION 10

View the Exhibit and examine the structure of the CUSTOMERS and CUST\_HISTORY tables.

CUSTOMERS		
Name	Null?	Type
-----	-----	-----
CUST_ID	NOT NULL	NUMBER (4)
CUST_NAME		VARCHAR2 (20)
CUST_ADDRESS		VARCHAR2 (30)
CUST_CITY		VARCHAR2 (20)

CUST_HISTORY		
Name	Null?	Type
-----	-----	-----
CUST_ID	NOT NULL	NUMBER (4)
CUST_NAME		VARCHAR2 (20)
CUST_CITY		VARCHAR2 (20)
CHANGE_DATE		DATE

The CUSTOMERS table contains the current location of all currently active customers.

The CUST\_HISTORY table stores historical details relating to any changes in the location of all current as well as previous customers who are no longer active with the company.

You need to find those customers who have never changed their address. Which SET operator would you use to get the required output?

- A. INTERSECT
- B. UNION ALL
- C. MINUS
- D. UNION

**Answer: C**

#### NEW QUESTION 14

You want to display 5 percent of the rows from the SALES table for products with the lowest AMOUNT\_SOLD and also want to include the rows that have the same AMOUNT\_SOLD even if this causes the output to exceed 5 percent of the rows.

Which query will provide the required result?

- A. SELECT prod\_id, cust\_id, amount\_soldFROM salesORDER BY amount\_soldFETCH FIRST 5 PERCENT ROWS WITH TIES;
- B. SELECT prod\_id, cust\_id, amount\_soldFROM salesORDER BY amount\_soldFETCH FIRST 5 PERCENT ROWS ONLY WITH TIES;
- C. SELECT prod\_id, cust\_id, amount\_soldFROM salesORDER BY amount\_soldFETCH FIRST 5 PERCENT ROWS WITH TIES ONLY;
- D. SELECT prod\_id, cust\_id, amount\_soldFROM salesORDER BY amount\_soldFETCH FIRST 5 PERCENT ROWS ONLY;

**Answer: A**

#### NEW QUESTION 19

Examine the data in the CUST\_NAME column of the CUSTOMERS table.

CUST\_NAME

-----

Renske Ladwig Jason Mallin Samuel McCain Allan MCEwen Irene Mikilineni Julia Nayer

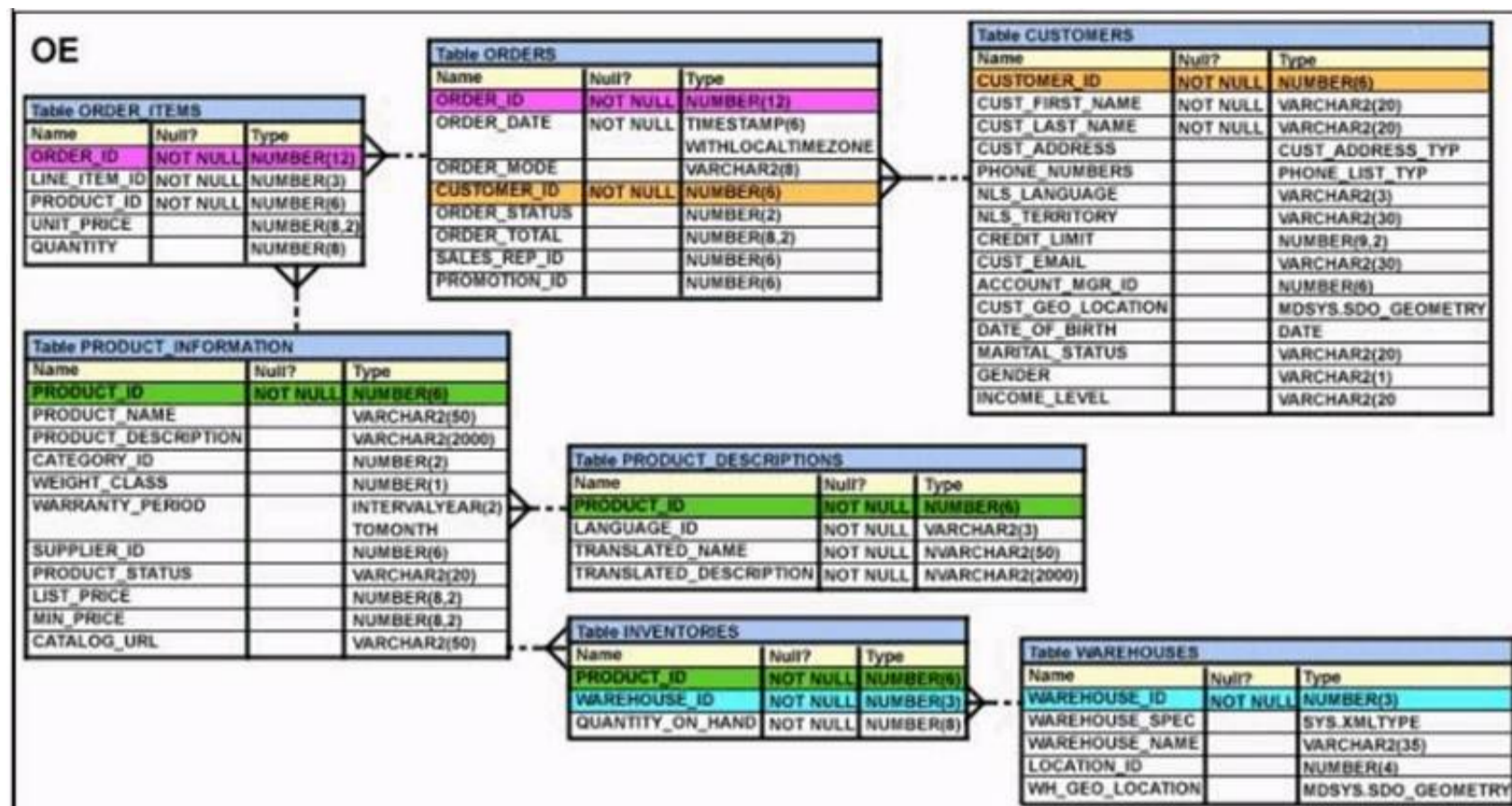
You need to display customers' second names where the second name starts with "Mc" or "MC". Which query gives the required output?

- A. SELECT SUBSTR (cust\_name, INSTR (cust\_name, '')+1)FROM customersWHERE SUBSTR (cust\_name, INSTR (cust\_name, '')+1)LIKE INITCAP ('MC%');
- B. SELECT SUBSTR (cust\_name, INSTR (cust\_name, '')+1)FROM customersWHERE INITCAP (SUBSTR(cust\_name, INSTR (cust\_name, '')+1)) ='Mc';
- C. SELECT SUBSTR (cust\_name, INSTR (cust\_name, '')+1)FROM customersWHERE INITCAP (SUBSTR(cust\_name, INSTR (cust\_name, '')+1))LIKE 'Mc%';
- D. SELECT SUBSTR (cust\_name, INSTR (cust\_name, '')+1)FROM customersWHERE INITCAP (SUBSTR(cust\_name, INSTR (cust\_name, '')+1)) =INITCAP 'MC%';

**Answer: C**

#### NEW QUESTION 23

View the Exhibit and examine the structure of the ORDERS table.



Which UPDATE statement is valid?

- A. UPDATE orders SET order\_date = '12-mar-2007', order\_total IS NULL WHERE order\_id = 2455;
- B. UPDATE orders SET order\_date = '12-mar-2007', AND order\_total = TO\_NUMBER(NULL) WHERE order\_id = 2455;
- C. UPDATE orders SET order\_date = '12-mar-2007', order\_total = NULL WHERE order\_id = 2455;
- D. UPDATE orders SET order\_date = TO\_DATE('12-mar-2007', 'dd-mon-yyyy'), SET order\_total = TO\_NUMBER(NULL) WHERE order\_id = 2455;

**Answer: C**

#### NEW QUESTION 25

You issued the following command: SQL> DROP TABLE employees; Which three statements are true?

- A. All uncommitted transactions are committed.
- B. All indexes and constraints defined on the table being dropped are also dropped.
- C. Sequences used in the employees table become invalid.
- D. The space used by the employees table is reclaimed immediately.
- E. The employees table can be recovered using the rollback command.
- F. The employees table is moved to the recycle bin.

**Answer: ABF**

#### NEW QUESTION 27

Evaluate the following SQL statement:

```
SQL> select cust_id, cust_last_name "Last name" FROM customers
WHERE country_id = 10 UNION
SELECT cust_id CUST_NO, cust_last_name FROM customers
WHERE country_id = 30
```

Identify three ORDER BY clauses either one of which can complete the query.

- A. ORDER BY "Last name"
- B. ORDER BY 2, cust\_id
- C. ORDER BY CUST\_NO
- D. ORDER BY 2, 1
- E. ORDER BY "CUST\_NO"

**Answer: ABD**

#### Explanation:

Using the ORDER BY Clause in Set Operations

- The ORDER BY clause can appear only once at the end of the compound query.
- Component queries cannot have individual ORDER BY clauses.
- The ORDER BY clause recognizes only the columns of the first SELECT query.
- By default, the first column of the first SELECT query is used to sort the output in an ascending order.

#### NEW QUESTION 30

On your Oracle 12c database, you invoked SQL \*Loader to load data into the EMPLOYEES table in the HR schema by issuing the following command:

```
$> sqlldr hr/hr@pdb table=employees
```

Which two statements are true regarding the command?

- A. It succeeds with default settings if the EMPLOYEES table belonging to HR is already defined in the database.
- B. It fails because no SQL \*Loader data file location is specified.
- C. It fails if the HR user does not have the CREATE ANY DIRECTORY privilege.
- D. It fails because no SQL \*Loader control file location is specified.

**Answer:** AC

**NEW QUESTION 34**

Examine the structure of the EMPLOYEES table. NameNull?Type

----- EMPLOYEE\_ID NOT NULL NUMBER(6) FIRST\_NAME VARCHAR2(20) LAST\_NAME NOT NULL VARCHAR2(25) EMAIL NOT NULL VARCHAR2(25) PHONE NUMBER VARCHAR2(20) HIRE\_DATE NOT NULL DATE JOB\_ID NOT NULL VARCHAR2(10) SALARY NUMBER(8,2) COMMISSION\_PCT NUMBER(2,2) MANAGER\_ID NUMBER(6) DEPARTMENT\_ID NUMBER(4)

There is a parent/child relationship between EMPLOYEE\_ID and MANAGER\_ID.

You want to display the last names and manager IDs of employees who work for the same manager as the employee whose EMPLOYEE\_ID is 123.

Which query provides the correct output?

- A. SELECT e.last\_name, m.manager\_id FROM employees e RIGHT OUTER JOIN employees mon (e.manager\_id = m.employee\_id) AND e.employee\_id = 123;
- B. SELECT e.last\_name, m.manager\_id FROM employees e RIGHT OUTER JOIN employees mon (e.employee\_id = m.manager\_id) WHERE e.employee\_id = 123;
- C. SELECT e.last\_name, e.manager\_id FROM employees e RIGHT OUTER JOIN employees mon (e.employee\_id = m.employee\_id) WHERE e.employee\_id = 123;
- D. SELECT m.last\_name, e.manager\_id FROM employees e LEFT OUTER JOIN employees mon (e.manager\_id = m.manager\_id) WHERE e.employee\_id = 123;

**Answer:** B

**NEW QUESTION 36**

Examine the structure of the MEMBERS table: NameNull?Type

----- MEMBER\_ID NOT NULL VARCHAR2 (6)

FIRST\_NAME VARCHAR2 (50)

LAST\_NAME NOT NULL VARCHAR2 (50)

ADDRESS VARCHAR2 (50)

CITY VARCHAR2 (25)

STATE VARCHAR2 (3)

You want to display details of all members who reside in states starting with the letter A followed by exactly one character.

Which SQL statement must you execute?

- A. SELECT \* FROM MEMBERS WHERE state LIKE '%A\_\*';
- B. SELECT \* FROM MEMBERS WHERE state LIKE 'A\_\*';
- C. SELECT \* FROM MEMBERS WHERE state LIKE 'A\_%';
- D. SELECT \* FROM MEMBERS WHERE state LIKE 'A%';

**Answer:** B

**NEW QUESTION 37**

Which statement is true about Enterprise Manager (EM) express in Oracle Database 12c?

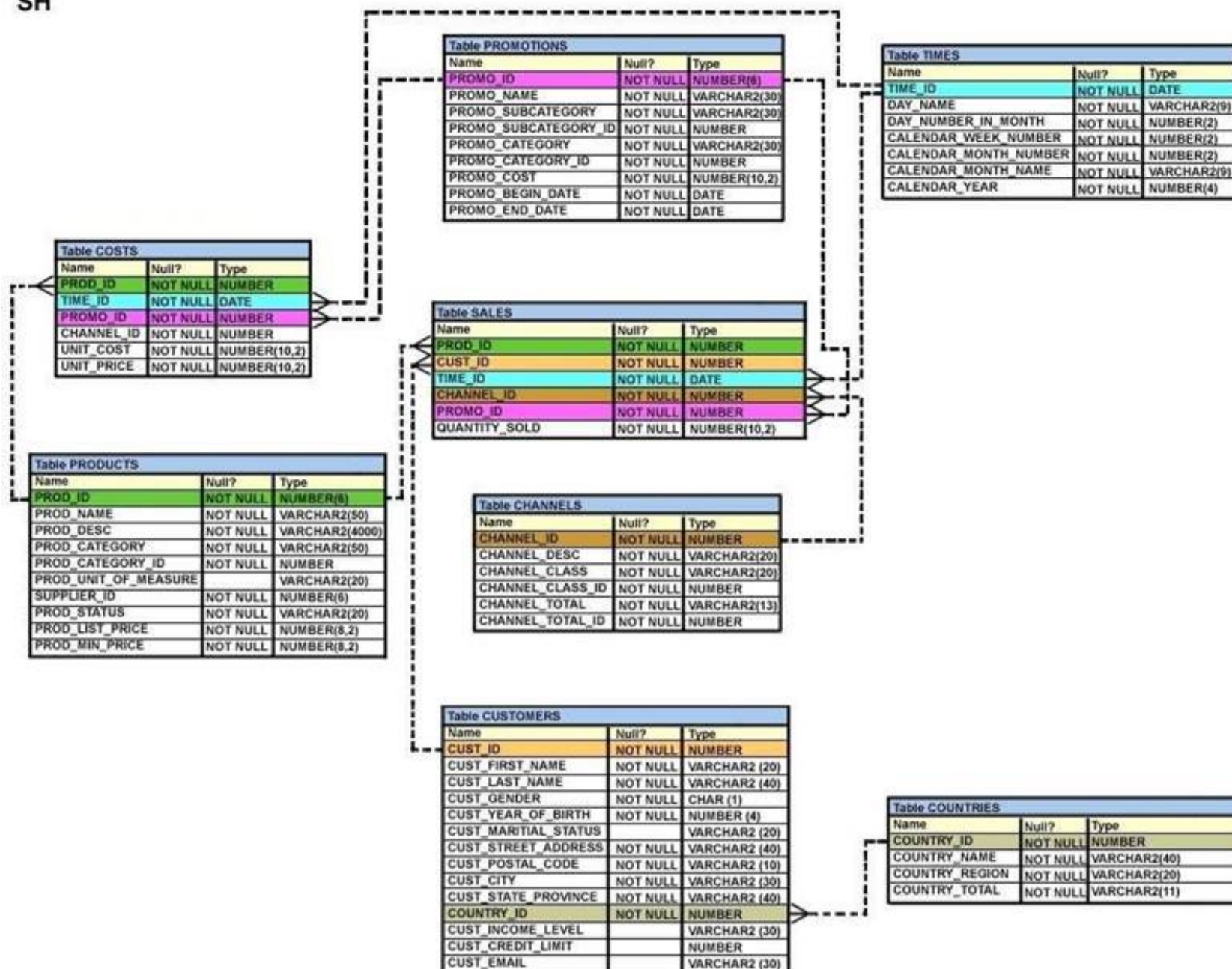
- A. By default, EM express is available for a database after database creation.
- B. You can use EM express to manage multiple databases running on the same server.
- C. You can perform basic administrative tasks for pluggable databases by using the EM express interface.
- D. You cannot start up or shut down a database Instance by using EM express.
- E. You can create and configure pluggable databases by using EM express.

**Answer:** A

**NEW QUESTION 38**

View the Exhibit and examine, the description for the SALES and CHANNELS tables. (Choose the best answer.)

SH



You issued this SQL statement:

```
INSERT INTO SALES VALUES (23, 2300, SYSDATE, (SELECT CAHNNEL_ID
FROM CHANNELS
WHERE CHANNEL_DESC='DIRECT SALES'), 12, 1, 500);
```

Which statement is true regarding the result?

- A. The statement will fail because the sub-query in the VALUES clause is not enclosed within single quotation marks.
- B. The statement will fail because a subquery cannot be used in a VALUES clause.
- C. The statement will execute and a new row will be inserted in the SALES table.
- D. The statement will fail because the VALUES clause is not required with the subquery.

**Answer: C**

#### NEW QUESTION 39

Which two statements are true regarding the EXISTS operator used in the correlated subqueries? (Choose two.)

- A. The outer query stops evaluating the result set of the inner query when the first value is found.
- B. It is used to test whether the values retrieved by the inner query exist in the result of the outer query.
- C. It is used to test whether the values retrieved by the outer query exist in the result set of the inner query.
- D. The outer query continues evaluating the result set of the inner query until all the values in the result set are processed.

**Answer: AC**

#### Explanation:

References:

<http://www.techonthenet.com/oracle/exists.php>

#### NEW QUESTION 44

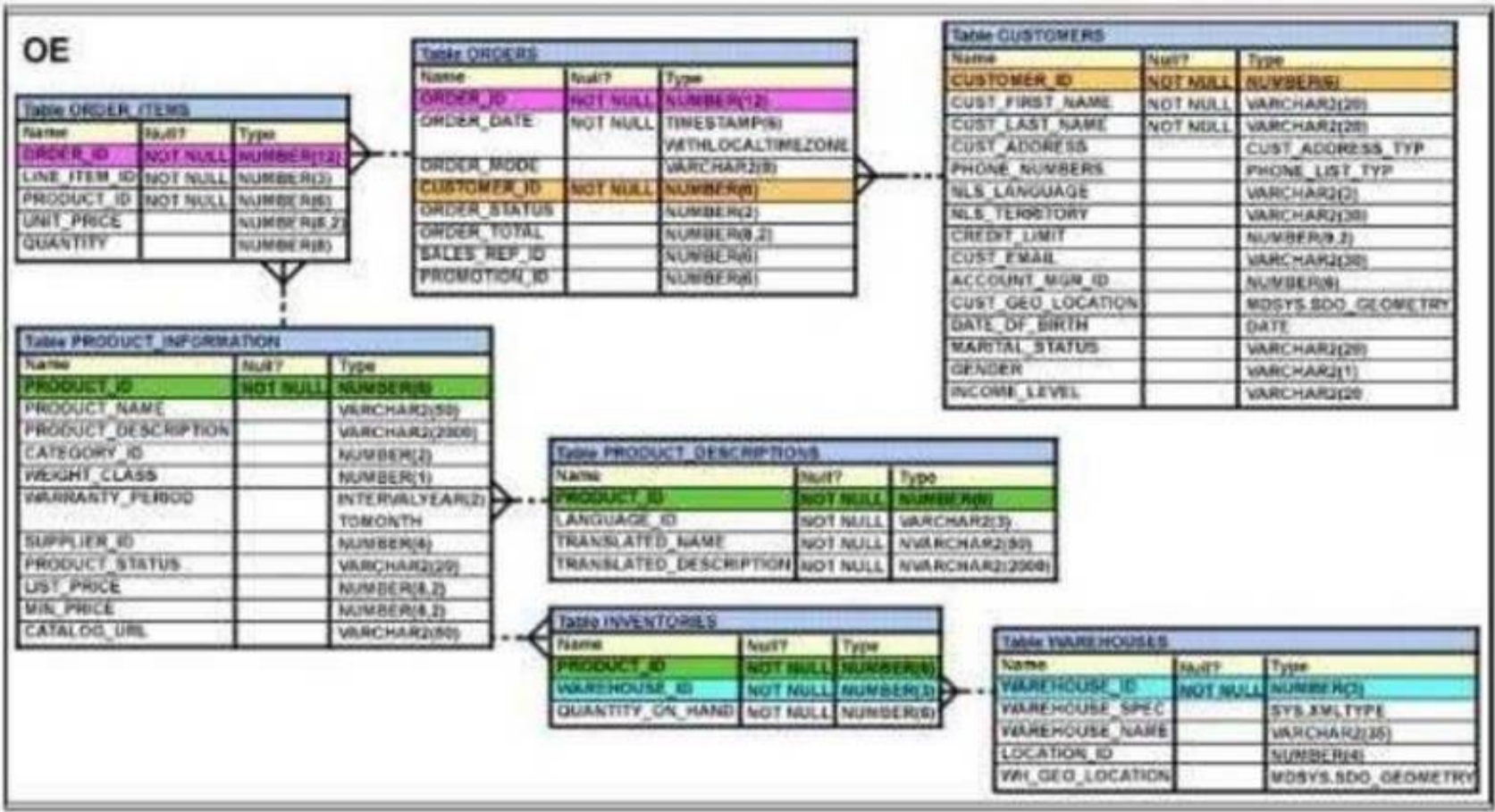
Which three tasks can be performed using SQL functions built into Oracle Database?

- A. displaying a date in a nondefault format
- B. finding the number of characters in an expression
- C. substituting a character string in a text expression with a specified string
- D. combining more than two columns or expressions into a single column in the output

**Answer: ABC**

#### NEW QUESTION 46

View the Exhibit and examine the structure of the PORDUCT\_INFORMATION table. (Choose the best answer.)



PRODUCT\_ID column is the primary key. You create an index using this command: SQL > CREATE INDEX upper\_name\_idx ON product\_information(UPPER(product\_name));

No other indexes exist on the PRODUCT\_INFORMATION table. Which query would use the UPPER\_NAME\_IDX index?

A. SELECT product\_id, UPPER(product\_name)FROM product\_informationWHERE UPPER(product\_name) = 'LASERPRO' OR list\_price > 1000;

B. SELECT UPPER(product\_name)FROM product\_information;

C. SELECT UPPER(product\_name)FROM product\_informationWHERE product\_id = 2254;

D. SELECT product\_idFROM product\_informationWHERE UPPER(product\_name) IN ('LASERPRO', 'CABLE');

Answer: D

NEW QUESTION 50

Examine the structure proposed for the TRANSACTIONS table:

Name	Null?	Type
-----	-----	-----
TRANS_ID	NOT NULL	NUMBER (6)
CUST_NAME	NOT NULL	VARCHAR2 (20)
CUST_STATUS	NOT NULL	VARCHAR2
TRANS_DATE	NOT NULL	DATE
TRANS_VALIDITY		INTERVAL DAY TO SECOND
CUST_CREDIT_VALUE		NUMBER (10)

Which two statements are true regarding the storage of data in the above table structure? (Choose two.)

- A. The CUST\_CREDIT\_VALUE column would allow storage of positive and negative integers.
- B. The TRANS\_VALIDITY column would allow storage of a time interval in days, hours, minutes, and seconds.
- C. The CUST\_STATUS column would allow storage of data up to the maximum VARCHAR2 size of 4,000 characters.
- D. The TRANS\_DATE column would allow storage of dates only in the dd-mon-yyyy format.

Answer: AB

NEW QUESTION 54

View the Exhibit and examine the data in the PRODUCTS table. (Choose the best answer.)

## PRODUCTS

PROD_ID	PROD_NAME	PROD_CATEGORY	PROD_MIN_PRICE	PROD_UNIT_OF_MEASURE
101	Envoy 156MB-40GB	Hardware	6000	Nos.
102	Y Box	Electronics	9000	
103	DVD-R Disc, 4.7 GB	Software/Other	2000	Nos.
104	Documentation	Software/Other	4000	

You must display product names from the PRODUCTS table that belong to the 'Software/other' category with minimum prices as either \$2000 or \$4000 and with no unit of measure.

You issue this query:

SQL > SELECT prod\_name, prod\_category, prod\_min\_price FROM products

Where prod\_category LIKE '%Other%' AND (prod\_min\_price = 2000 OR prod\_min\_price = 4000) AND prod\_unit\_of\_measure <> ' ';

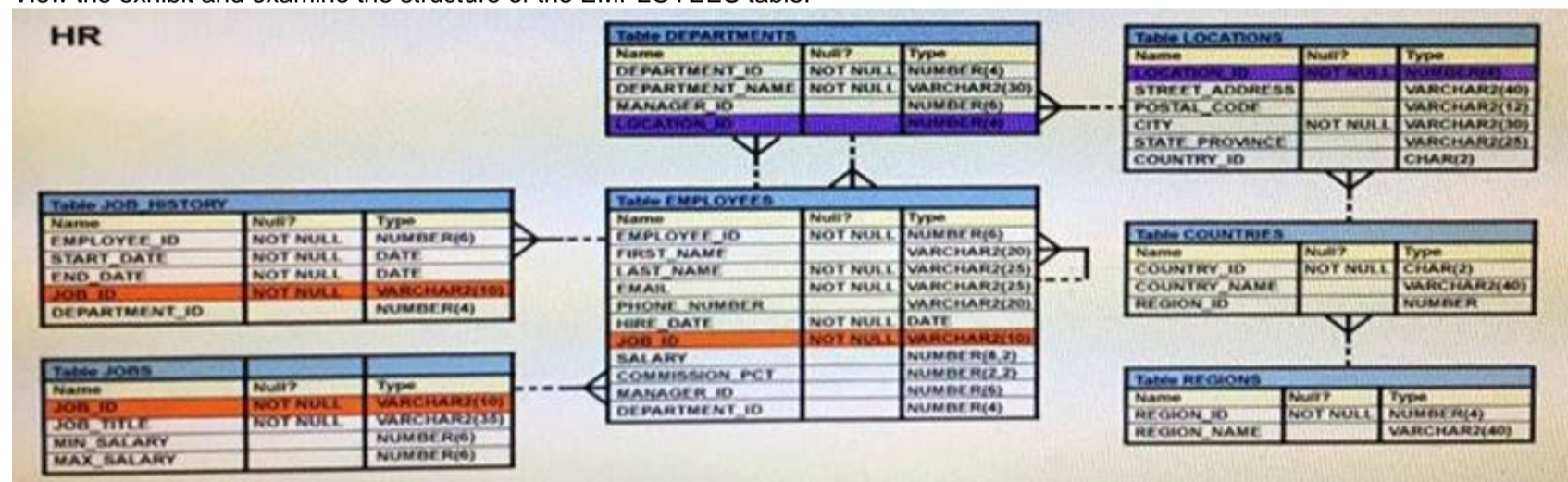
Which statement is true?

- A. It executes successfully but returns no result.
- B. It executes successfully and returns the required result.
- C. It generates an error because the condition specified for PROD\_UNIT\_OF\_MEASURE is not valid.
- D. It generates an error because the condition specified for the PROD\_CATEGORY column is not valid.

**Answer: A**

## NEW QUESTION 56

View the exhibit and examine the structure of the EMPLOYEES table.



You want to display all employees and their managers having 100 as the MANAGER\_ID. You want the output in two columns: the first column would have the LAST\_NAME of the managers and the second column would have LAST\_NAME of the employees.

Which SQL statement would you execute?

- A. SELECT m.last\_name "Manager", e.last\_name "Employee" FROM employees m JOIN employees e ON m.employee\_id = e.manager\_id WHERE m.manager\_id = 100;
- B. SELECT m.last\_name "Manager", e.last\_name "Employee" FROM employees m JOIN employees e ON m.employee\_id = e.manager\_id WHERE e.manager\_id = 100;
- C. SELECT m.last\_name "Manager", e.last\_name "Employee" FROM employees m JOIN employees e ON e.employee\_id = m.manager\_id WHERE m.manager\_id = 100;
- D. SELECT m.last\_name "Manager", e.last\_name "Employee" FROM employees m JOIN employees e WHERE m.employee\_id = e.manager\_id and AND e.manager\_id = 100

**Answer: B**

## NEW QUESTION 57

Which two statements are true regarding the SQL GROUP BY clause?

- A. You can use a column alias in the GROUP BY clause.
- B. Using the WHERE clause after the GROUP BY clause excludes rows after creating groups.
- C. The GROUP BY clause is mandatory if you are using an aggregating function in the SELECT clause.
- D. Using the WHERE clause before the GROUP BY clause excludes rows before creating groups.
- E. If the SELECT clause has an aggregating function, then columns without an aggregating function in the SELECT clause should be included in the GROUP BY clause.

**Answer: DE**

## NEW QUESTION 58

In the customers table, the CUST\_CITY column contains the value 'Paris' for the CUST\_FIRST\_NAME 'Abigail'.

Evaluate the following query:

```
SQL> SELECT INITCAP(cust_first_name || ' ' ||
                UPPER(SUBSTR(cust_city,-LENGTH(cust_city),2)))
FROM customers
WHERE cust_first_name = 'Abigail';
```

What would be the outcome?

- A. Abigail PA
- B. Abigail Pa
- C. Abigail IS
- D. An error message

**Answer: B**

#### NEW QUESTION 60

When does a transaction complete? (Choose all that apply.)

- A. When a PL/SQL anonymous block is executed
- B. When a DELETE statement is executed
- C. When a data definition language statement is executed
- D. When a TRUNCATE statement is executed after the pending transaction
- E. When a ROLLBACK command is executed

**Answer: CDE**

#### NEW QUESTION 63

View the exhibits and examine the structures of the COSTS and PROMOTIONS tables.

Table COSTS		
Name	Null?	Type
PROD_ID	NOT NULL	NUMBER
TIME_ID	NOT NULL	DATE
PROMO_ID	NOT NULL	NUMBER
CHANNEL_ID	NOT NULL	NUMBER
UNIT_COST	NOT NULL	NUMBER(10,2)
UNIT_PRICE	NOT NULL	NUMBER(10,2)

Table PROMOTIONS		
Name	Null?	Type
PROMO_ID	NOT NULL	NUMBER(6)
PROMO_NAME	NOT NULL	VARCHAR2(30)
PROMO_SUBCATEGORY	NOT NULL	VARCHAR2(30)
PROMO_SUBCATEGORY_ID	NOT NULL	NUMBER
PROMO_CATEGORY	NOT NULL	VARCHAR2(30)
PROMO_CATEGORY_ID	NOT NULL	NUMBER
PROMO_COST	NOT NULL	NUMBER(10,2)
PROMO_BEGIN_DATE	NOT NULL	DATE
PROMO_END_DATE	NOT NULL	DATE

Evaluate the following SQL statement: SQL> SELECT prod\_id FROM costs  
WHERE promo\_id IN (SELECT promo\_id FROM promotions WHERE promo\_cost < ALL  
(SELECT MAX(promo\_cost) FROM promotions GROUP BY (promo\_end\_date- promo\_begin\_date)));  
What would be the outcome of the above SQL statement?

- A. It displays prod IDs in the promo with the lowest cost.
- B. It displays prod IDs in the promos with the lowest cost in the same time interval.
- C. It displays prod IDs in the promos with the highest cost in the same time interval.
- D. It displays prod IDs in the promos which cost less than the highest cost in the same time interval.

**Answer: D**

#### NEW QUESTION 65

Which two statements are true regarding constraints?

- A. A table can have only one primary key and one foreign key.
- B. A table can have only one primary key but multiple foreign keys.
- C. Only the primary key can be defined at the column and table levels.
- D. The foreign key and parent table primary key must have the same name.
- E. Both primary key and foreign key constraints can be defined at both column and table levels.

**Answer: BE**

#### NEW QUESTION 68

Which task can be performed by using a single Data Manipulation Language (DML) statement?

- A. adding a column constraint when inserting a row into a table
- B. adding a column with a default value when inserting a row into a table
- C. removing all data only from one single column on which a unique constraint is defined

D. removing all data only from one single column on which a primary key constraint is defined

**Answer: C**

### NEW QUESTION 73

Which statement is true regarding the default behavior of the ORDER BY clause?

- A. In a character sort, the values are case-sensitive.
- B. NULL values are not considered at all by the sort operation.
- C. Only those columns that are specified in the SELECT list can be used in the ORDER BY clause.
- D. Numeric values are displayed from the maximum to the minimum value if they have decimal positions.

**Answer: A**

### NEW QUESTION 77

You must create a table for a banking application. (Choose the best answer.) One of the columns in the table has these requirements:

- 1: A column to store the duration of a short term loan
- 2: The data should be stored in a format supporting DATE arithmetic with DATE datatypes without using conversion functions.
- 3: The maximum loan period is 30 days.
- 4: Interest must be calculated based on the number of days for which the loan remains unpaid. Which data type would you use?

- A. Date
- B. Number
- C. Timestamp
- D. Interval day to second
- E. Interval year to month

**Answer: D**

### NEW QUESTION 82

The following are the steps for a correlated subquery, listed in random order:

- The WHERE clause of the outer query is evaluated.
  - The candidate row is fetched from the table specified in the outer query.
  - This is repeated for the subsequent rows of the table, till all the rows are processed.
  - Rows are returned by the inner query, after being evaluated with the value from the candidate row in the outer query.
- Which is the correct sequence in which the Oracle server evaluates a correlated subquery?

- A. 2, 1, 4, 3
- B. 4, 1, 2, 3
- C. 4, 2, 1, 3
- D. 2, 4, 1, 3

**Answer: D**

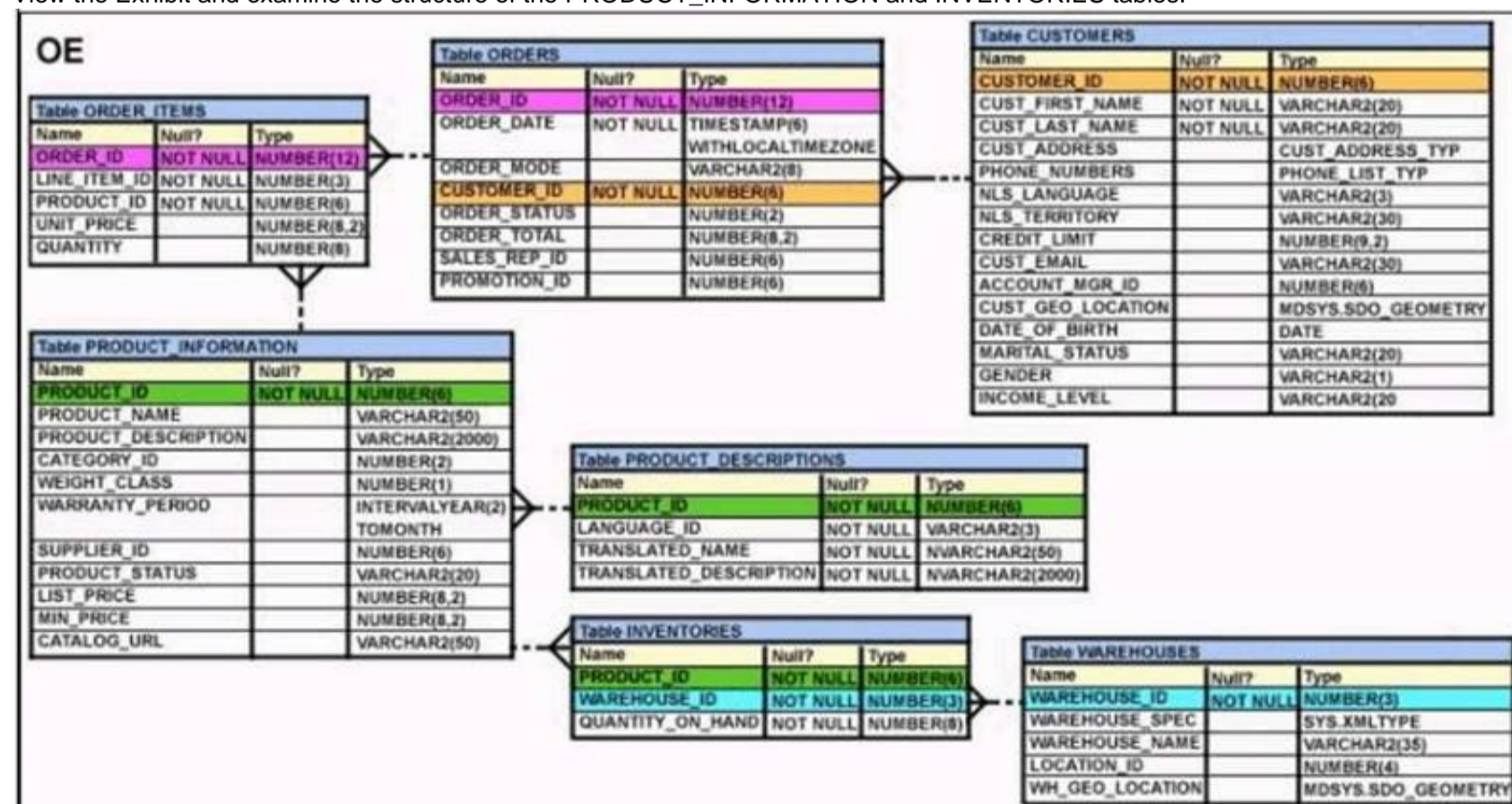
### Explanation:

References:

<http://rajanimohanty.blogspot.co.uk/2014/01/correlated-subquery.html>

### NEW QUESTION 83

View the Exhibit and examine the structure of the PRODUCT\_INFORMATION and INVENTORIES tables.



You have a requirement from the supplies department to give a list containing PRODUCT\_ID, SUPPLIER\_ID, and QUANTITY\_ON\_HAND for all the products wherein QUANTITY\_ON\_HAND is less than five.

Which two SQL statements can accomplish the task? (Choose two.)

A. SELECT i.product\_id, i.quantity\_on\_hand, pi.supplier\_idFROM product\_information pi JOIN inventories iON (pi.product\_id=i.product\_id)WHERE quantity\_on\_hand < 5;  
B. SELECT product\_id, quantity\_on\_hand, supplier\_idFROM product\_informationNATURAL JOIN inventories AND quantity\_on\_hand < 5;  
C. SELECT i.product\_id, i.quantity\_on\_hand, pi.supplier\_idFROM product\_information pi JOIN inventories iON (pi.product\_id=i.product\_id) AND quantity\_on\_hand < 5;  
D. SELECT i.product\_id, i.quantity\_on\_hand, pi.supplier\_idFROM product\_information pi JOINinventories iON (pi.product\_id=i.product\_id)USING (product\_id) AND quantity\_on\_hand < 5;

**Answer:** AC

#### NEW QUESTION 87

Examine the structure of the BOOKS\_TRANSACTIONS table:

Name	Null?	Type
TRANSACTION_ID	NOT NULL	VARCHAR2 (6)
BORROWED_DATE		DATE
DUE_DATE		DATE
BOOK_ID		VARCHAR2 (6)
MEMBER_ID		VARCHAR2 (6)

You want to display the member IDs, due date, and late fee as \$2 for all transactions. Which SQL statement must you execute?

A. SELECT member\_id AS "MEMBER ID", due\_date AS "DUE DATE", \$2 AS "LATE FEE" FROM BOOKS\_TRANSACTIONS  
B. SELECT member\_id AS "MEMBER ID", due\_date AS "DUE DATE", '\$2' AS "LATE FEE" FROM BOOKS\_TRANSACTIONS  
C. SELECT member\_id 'MEMBER ID', due\_date 'DUE DATE', '\$2 AS LATE FEE' FROM BOOKS\_TRANSACTIONS;  
D. SELECT member\_id AS MEMBER\_ID, due\_date AS DUE\_DATE, \$2 AS LATE\_FEE FROM BOOKS\_TRANSACTIONS

**Answer:** B

#### NEW QUESTION 92

View the exhibit and examine the structure of the STORES table. STORES table

NameNull?Type

----- STORE\_IDNUMBER NAMEVARCHAR2(100)

ADDRESSVARCHAR2(200) CITYVARCHAR2(100) COUNTRYVARCHAR2(100) START\_DATEDATE END\_DATEDATE PROPERTY\_PRICE

NUMBER  
You want to display the NAME of the store along with the ADDRESS, START\_DATE, PROPERTY\_PRICE, and the projected property price, which is 115% of property price.

The stores displayed must have START\_DATE in the range of 36 months starting from 01-Jan-2000 and above.

Which SQL statement would get the desired output?

A. SELECT name, concat (address|| ','|| |city| |', ', country) AS full\_address,start\_date,property\_price, property\_price\*115/100FROM storesWHERE MONTHS\_BETWEEN (start\_date, '01-JAN-2000')<=36;  
B. SELECT name, concat (address|| ','|| |city| |', ', country) AS full\_address,start\_date,property\_price, property\_price\*115/100FROM storesWHERETO\_NUMBER(start\_date-TO\_DATE('01-JAN-2000','DD-MON-RRRR')) <=36;  
C. SELECT name, address||','|||city||','||country AS full\_address,start\_date,property\_price, property\_price\*115/100FROM storesWHERE MONTHS\_BETWEEN (start\_date, TO\_DATE('01-JAN-2000','DD-MON-RRRR')) <=36;  
D. SELECT name, concat (address||','|| |city| |', ', country) AS full\_address,start\_date,property\_price, property\_price\*115/100FROM storesWHERE MONTHS\_BETWEEN (start\_date, TO\_DATE('01-JAN-2000','DD-MON-RRRR')) <=36;

**Answer:** D

#### NEW QUESTION 96

Which three statements are true about multiple-row subqueries?

A. They can contain a subquery within a subquery.  
B. They can return multiple columns as well as rows.  
C. They cannot contain a subquery within a subquery.  
D. They can return only one column but multiple rows.  
E. They can contain group functions and GROUP BY and HAVING clauses.  
F. They can contain group functions and the GROUP BY clause, but not the HAVING clause.

**Answer:** ABE

#### NEW QUESTION 99

Which two statements are true regarding constraints? (Choose two.)

A. A constraint is enforced only for an INSERT operation on a table.  
B. A foreign key cannot contain NULL values.  
C. The column with a UNIQUE constraint can store NULLS.  
D. You can have more than one column in a table as part of a primary key.

**Answer:** CD

### NEW QUESTION 101

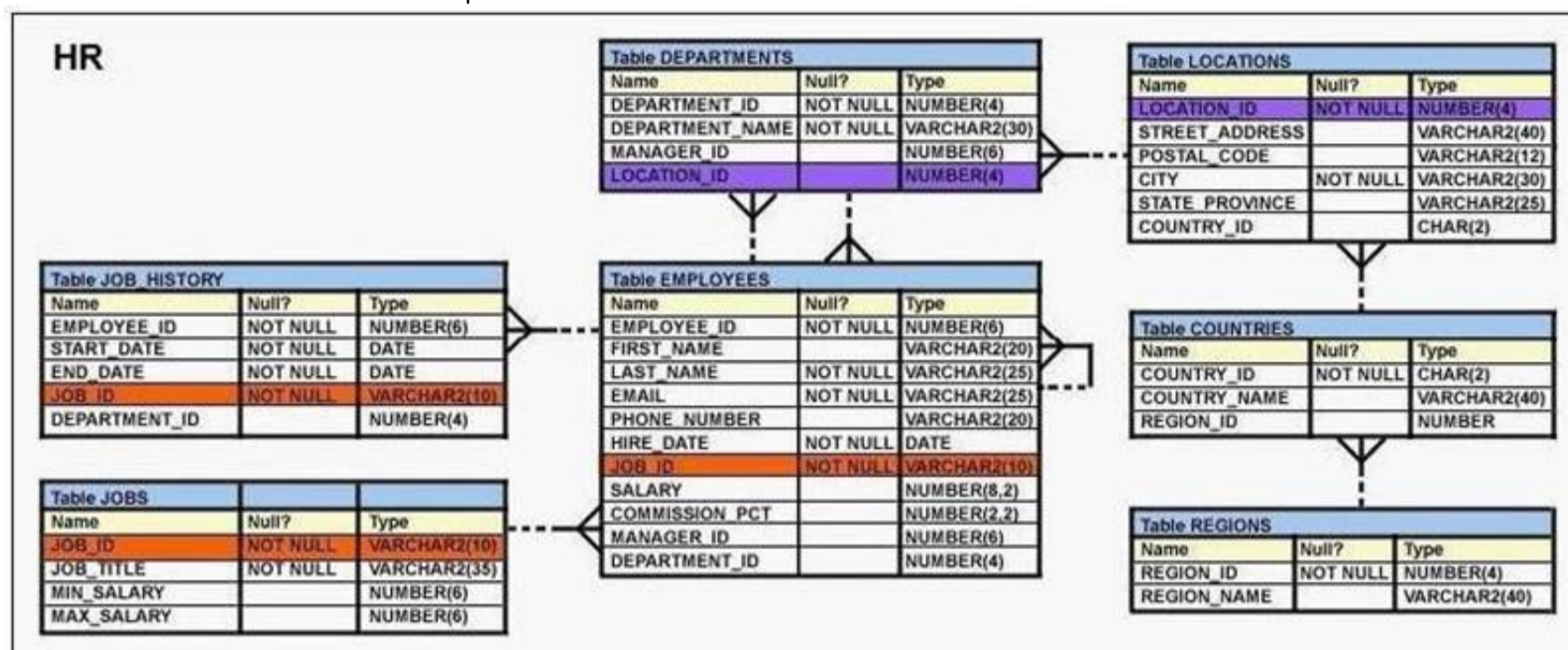
A non-correlated subquery can be defined as . (Choose the best answer.)

- A. A set of one or more sequential queries in which generally the result of the inner query is used as the search value in the outer query.
- B. A set of sequential queries, all of which must return values from the same table.
- C. A set of sequential queries, all of which must always return a single value.
- D. A SELECT statement that can be embedded in a clause of another SELECT statement only.

**Answer: A**

### NEW QUESTION 104

View the Exhibit and examine the description of the EMPLOYEES table.



You want to calculate the total remuneration for each employee. Total remuneration is the sum of the annual salary and the percentage commission earned for a year. Only a few employees earn commission.

Which SQL statement would you execute to get the desired output?

- A. SELECT first\_name, salary, salary\*12+(salary\*NVL2 (commission\_pct, salary,salary+commission\_pct))"Total"FROM EMPLOYEES;
- B. SELECT first\_name, salary, salary\*12+salary\*commission\_pct "Total"FROM EMPLOYEES;
- C. SELECT first\_name, salary (salary + NVL (commission\_pct, 0)\*salary)\*12 "Total"FROM EMPLOYEES;
- D. SELECT first\_name, salary\*12 + NVL(salary,0)\*commission\_pct, "Total"FROM EMPLOYEES;

**Answer: A**

### NEW QUESTION 105

Sales data of a company is stored in two tables, SALES1 and SALES2, with some data being duplicated across the tables. You want to display the results from the SALES1 table, which are not present in the SALES2 table.

SALES1 table NameNullType

----- SALES\_IDNUMBER STORE\_IDNUMBER ITEMS\_IDNUMBER QUANTITYNUMBER SALES\_DATEDATE

SALES2 table NameNullType

----- SALES\_IDNUMBER STORE\_IDNUMBER

ITEMS\_IDNUMBER QUANTITYNUMBER SALES\_DATEDATE

Which set operator generates the required output?

- A. INTERSECT
- B. UNION
- C. PLUS
- D. MINUS
- E. SUBTRACT

**Answer: D**

### Explanation:

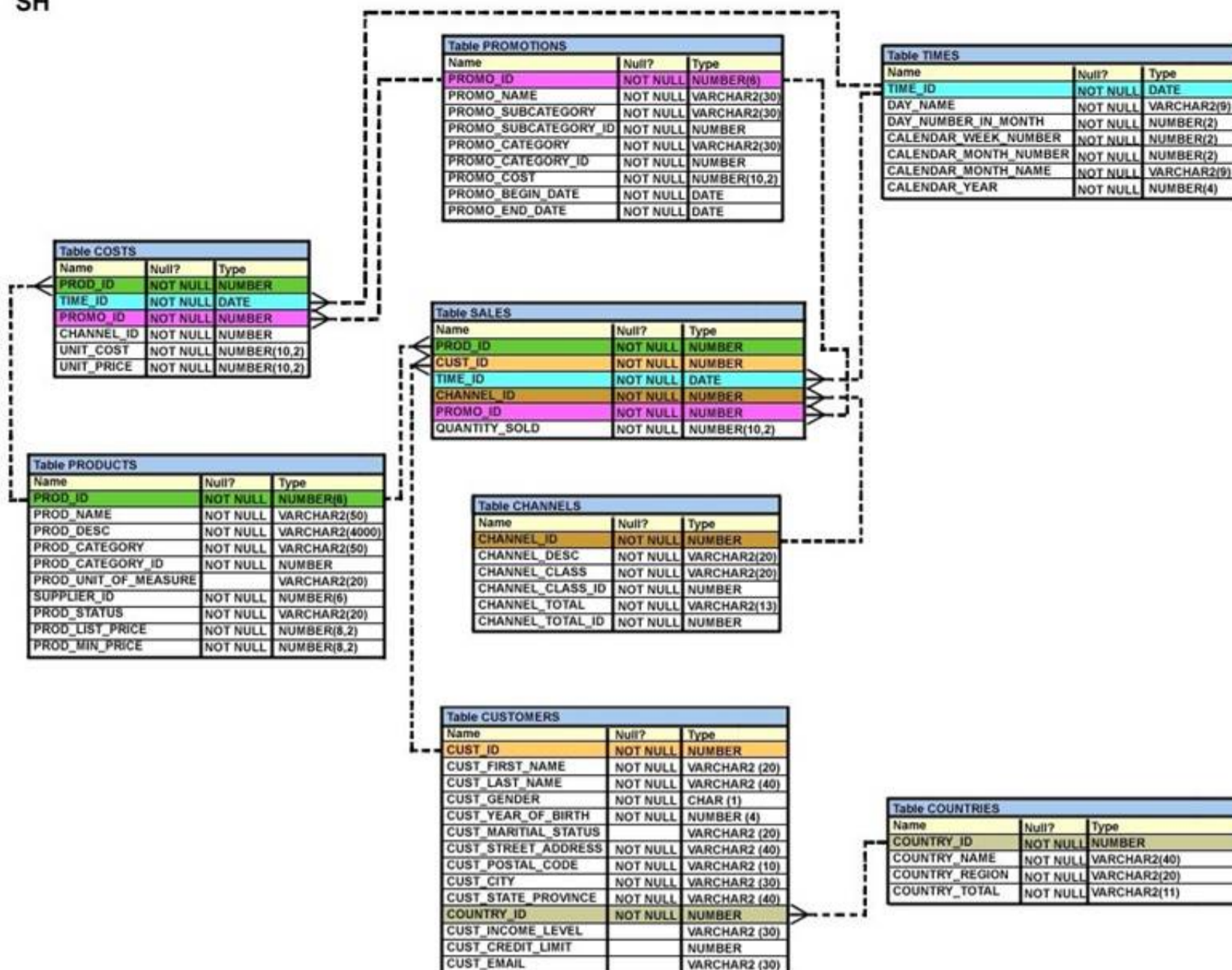
References:

[https://docs.oracle.com/cd/B19306\\_01/server.102/b14200/queries004.htm](https://docs.oracle.com/cd/B19306_01/server.102/b14200/queries004.htm)

### NEW QUESTION 106

View the exhibit and examine the structure of the SALES, CUSTOMERS, PRODUCTS and TIMES tables.

SH



The PROD\_ID column is the foreign key in the SALES tables, which references the PRODUCTS table.

Similarly, the CUST\_ID and TIME\_ID columns are also foreign keys in the SALES table referencing the CUSTOMERS and TIMES tables, respectively.

Evaluate the following CREATE TABLE command:

```
CREATE TABLE new_sales (prod_id, cust_id, order_date DEFAULT SYSDATE)
```

AS

```
SELECT prod_id, cust_id, time_id FROM sales;
```

Which statement is true regarding the above command?

- A. The NEW\_SALES table would get created and all the NOT NULL constraints defined on the specified columns would be passed to the new table.
- B. The NEW\_SALES table would not get created because the DEFAULT value cannot be specified in the column definition.
- C. The NEW\_SALES table would not get created because the column names in the CREATE TABLE command and the SELECT clause do not match.
- D. The NEW\_SALES table would get created and all the FOREIGN KEY constraints defined on the specified columns would be passed to the new table.

**Answer: A**

#### NEW QUESTION 110

View the Exhibit and examine the structure of the PROMOTIONS table.

Table PROMOTIONS		
Name	Null?	Type
PROMO_ID	NOT NULL	NUMBER(6)
PROMO_NAME	NOT NULL	VARCHAR2(30)
PROMO_SUBCATEGORY	NOT NULL	VARCHAR2(30)
PROMO_SUBCATEGORY_ID	NOT NULL	NUMBER
PROMO_CATEGORY	NOT NULL	VARCHAR2(30)
PROMO_CATEGORY_ID	NOT NULL	NUMBER
PROMO_COST	NOT NULL	NUMBER(10,2)
PROMO_BEGIN_DATE	NOT NULL	DATE
PROMO_END_DATE	NOT NULL	DATE

Evaluate the following SQL statement:

```
SQL>SELECT promo_name,CASE
      WHEN promo_cost >=(SELECT AVG(promo_cost)
      FROM promotions
      WHERE promo_category='TV' )
      THEN 'HIGH'
      ELSE 'LOW'
      END COST_REMARK
FROM promotions;
```

Which statement is true regarding the outcome of the above query?

- A. It produces an error because subqueries cannot be used with the CASE expression.
- B. It shows COST\_REMARK for all the promos in the promo category 'TV'.
- C. It shows COST\_REMARK for all the promos in the table.
- D. It produces an error because the subquery gives an error.

**Answer:** C

#### NEW QUESTION 112

Evaluate the following query:

```
SQL> SELECT TRUNC (ROUND (156.00, -1),-1) FROM DUAL;
```

What would be the outcome?

- A. 150
- B. 200
- C. 160
- D. 16
- E. 100

**Answer:** C

#### Explanation:

References:

[https://docs.oracle.com/cd/B19306\\_01/server.102/b14200/functions135.htm](https://docs.oracle.com/cd/B19306_01/server.102/b14200/functions135.htm) [https://docs.oracle.com/cd/B28359\\_01/olap.111/b28126/dml\\_functions\\_2127.htm](https://docs.oracle.com/cd/B28359_01/olap.111/b28126/dml_functions_2127.htm)

#### NEW QUESTION 113

Which three statements are true regarding single-row functions? (Choose three.)

- A. The data type returned, can be different from the data type of the argument that is referenced.
- B. They can return multiple values of more than one data type.
- C. They can accept only one argument.
- D. They can be nested up to only two levels.
- E. They can be used in SELECT, WHERE, and ORDER BY clauses.
- F. They can accept column names, expressions, variable names, or a user-supplied constants as arguments.

**Answer:** AEF

#### NEW QUESTION 116

Which two statements are true about Data Manipulation Language (DML) statements?

- A. An INSERT INTO...VALUES.. statement can add multiple rows per execution to a table.
- B. An UPDATE... SET... statement can modify multiple rows based on multiple conditions on a table.
- C. ADELETE FROM..... statement can remove rows based on only a single condition on a table.
- D. An INSERT INTO... VALUES..... statement can add a single row based on multiple conditions on a table.
- E. ADELETE FROM..... statement can remove multiple rows based on multiple conditions on a table.
- F. An UPDATE....SET.... statement can modify multiple rows based on only a single condition on a table.

**Answer:** BE

#### Explanation:

References:

[http://www.techonthenet.com/sql/and\\_or.php](http://www.techonthenet.com/sql/and_or.php)

#### NEW QUESTION 121

In which three situations does a transaction complete?

- A. when a PL/SQL anonymous block is executed
- B. when a DELETE statement is executed
- C. when a ROLLBACK command is executed
- D. when a data definition language (DDL) statement is executed
- E. when a TRUNCATE statement is executed after the pending transaction

**Answer:** CDE

**Explanation:**

References:

[https://docs.oracle.com/cd/B19306\\_01/server.102/b14220/transact.htm](https://docs.oracle.com/cd/B19306_01/server.102/b14220/transact.htm)

#### NEW QUESTION 124

View the Exhibit and examine the structure of the EMP table which is not partitioned and not an index-organized table. (Choose two.)

EMP Name	Null?	Type
EMPNO	NOT NULL	NUMBER (4)
FIRST_NAME		VARCHAR2 (20)
LAST_NAME		VARCHAR2
SALARY		NUMBER (10, 2)
DEPTNO		NUMBER (2)

Evaluate this SQL statement: ALTER TABLE emp

DROP COLUMN first\_name; Which two statements are true?

- A. The FIRST\_NAME column can be dropped even if it is part of a composite PRIMARY KEY provided the CASCADE option is added to the SQL statement.
- B. The FIRST\_NAME column would be dropped provided at least one column remains in the table.
- C. The FIRST\_NAME column would be dropped provided it does not contain any data.
- D. The drop of the FIRST\_NAME column can be rolled back provided the SET UNUSED option is added to the SQL statement.

**Answer:** B

#### NEW QUESTION 129

Which two statements are true about sequences crated in a single instance Oracle database?

- A. The numbers generated by an explicitly defined sequence can only be used to insert data in one table.
- B. DELETE <sequencename> would remove a sequence from the database.
- C. CURRVAL is used to refer to the most recent sequence number that has been generated for a particular sequence.
- D. When the MAXVALUE limit for a sequence is reached, it can be increased by using the ALTER SEQUENCE statement.
- E. When the database instance shuts down abnormally, sequence numbers that have been cached but not used are available again when the instance is restarted.

**Answer:** CD

#### NEW QUESTION 131

View and Exhibit and examine the structure and data in the INVOICE table. (Choose two.)

Name	Null	Type
-----		
INV_NO	NOT NULL	NUMBER(3)
INV_DATE		DATE
INV_AMT		NUMBER(10,2)

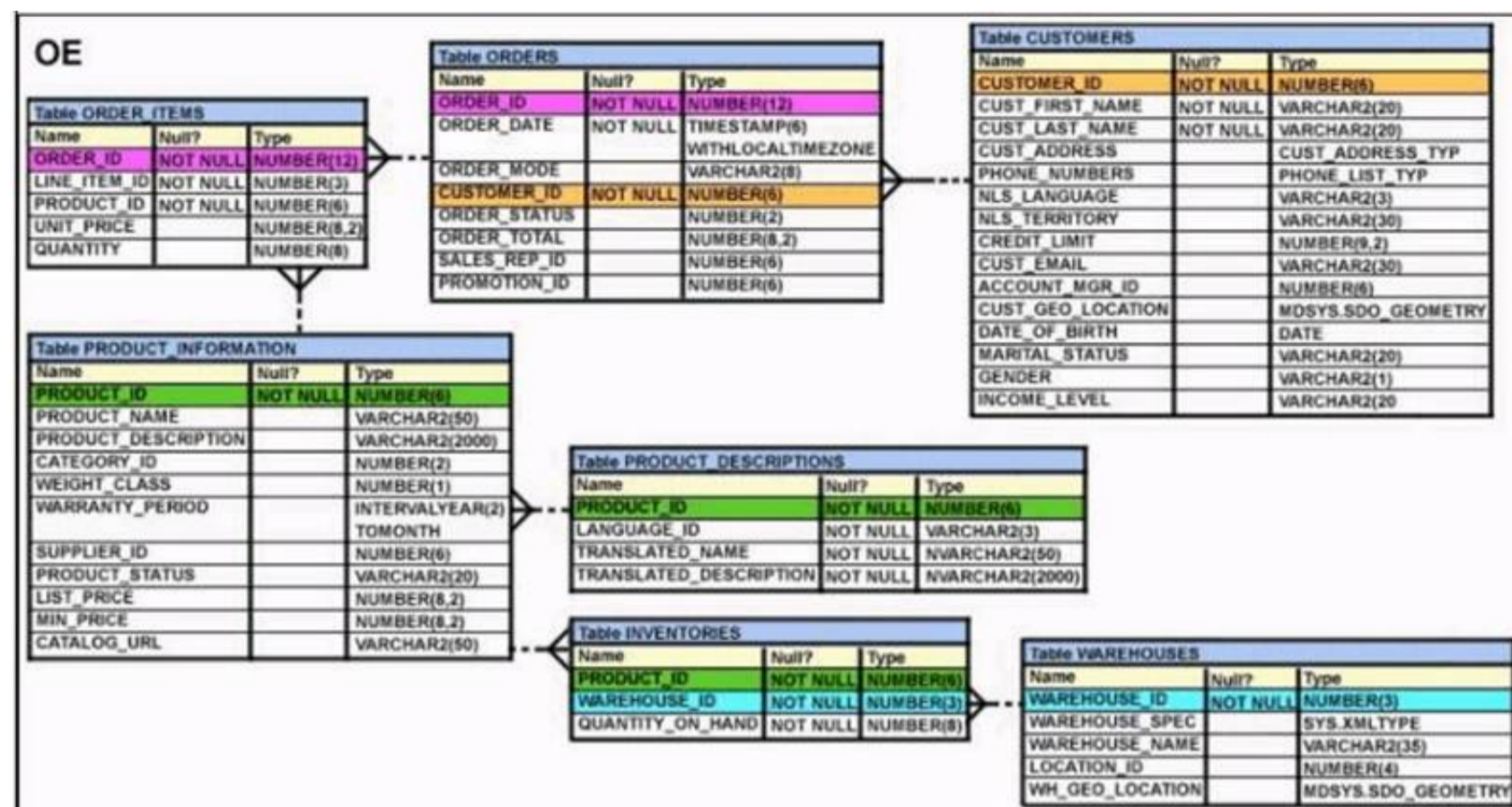
Which two statements are true regarding data type conversion in query expressions?

- A. inv\_date = '15-february-2008' :uses implicit conversion
- B. inv\_amt = '0255982' : requires explicit conversion
- C. inv\_date > '01-02-2008' : uses implicit conversion
- D. CONCAT(inv\_amt, inv\_date) : requires explicit conversion
- E. inv\_no BETWEEN '101' AND '110' : uses implicit conversion

**Answer:** AE

#### NEW QUESTION 133

View the Exhibit and examine the structure of the ORDERS table. The ORDER\_ID column is the PRIMARY KEY in the ORDERS table.



Evaluate the following CREATE TABLE command:

```
CREATE TABLE new_orders(ord_id, ord_date DEFAULT SYSDATE, cus_id) AS
```

```
SELECT order_id, order_date, customer_id FROM orders;
```

Which statement is true regarding the above command?

- A. The NEW\_ODRDERS table would not get created because the DEFAULT value cannot be specified in the column definition.
- B. The NEW\_ODRDERS table would get created and only the NOT NULL constraint defined on the specified columns would be passed to the new table.
- C. The NEW\_ODRDERS table would not get created because the column names in the CREATE TABLE command and the SELECT clause do not match.
- D. The NEW\_ODRDERS table would get created and all the constraints defined on the specified columns in the ORDERS table would be passed to the new table.

**Answer: B**

#### NEW QUESTION 138

Examine these SQL statements that are executed in the given order:

```
CREATE TABLE emp
```

```
(emp_no NUMBER(2) CONSTRAINT emp_emp_no_pk PRIMARY KEY, ename VARCHAR2(15),
```

```
salary NUMBER(8,2),
```

```
mgr_no NUMBER(2) CONSTRAINT emp_mgr_fk REFERENCES emp (emp_no)); ALTER TABLE emp
```

```
DISABLE CONSTRAINT emp_emp_no_pk CASCADE; ALTER TABLE emp
```

```
ENABLE CONSTRAINT emp_emp_no_pk;
```

What will be the status of the foreign key EMP\_MGR\_FK?

- A. It will be enabled and immediate.
- B. It will be enabled and deferred.
- C. It will remain disabled and can be re-enabled manually.
- D. It will remain disabled and can be enabled only by dropping the foreign key constraint and re-creating it.

**Answer: C**

#### NEW QUESTION 143

Examine the structure of the EMPLOYEES table. (Choose two.)

Name	Null?	Type
EMPLOYEE_ID	NOT NULL	NUMBER(6)
FIRST_NAME		VARCHAR2(20)
LAST_NAME	NOT NULL	VARCHAR2(25)
EMAIL	NOT NULL	VARCHAR2(25)
PHONE_NUMBER		VARCHAR2(20)
HIRE_DATE	NOT NULL	DATE
JOB_ID	NOT NULL	VARCHAR2(10)
SALARY		NUMBER(8,2)
COMMISSION_PCT		NUMBER(2,2)
MANAGER_ID		NUMBER(6)
DEPARTMENT_ID		NUMBER(4)

You must display the maximum and minimum salaries of employees hired 1 year ago. Which two statements would provide the correct output?

- A. `SELECT MIN(salary) minsal, MAX(salary) maxsal FROM employees WHERE hire_date < SYSDATE-365 GROUP BY MIN(salary), MAX(salary);`
- B. `SELECT minsal, maxsal FROM (SELECT MIN(salary) minsal, MAX(salary) maxsal FROM employees WHERE hire_date < SYSDATE-365) GROUP BY maxsal, minsal;`
- C. `SELECT minsal, maxsal FROM (SELECT MIN(salary) minsal, MAX(salary) maxsal FROM employees WHERE hire_date < SYSDATE-365) GROUP BY`

MIN(salary), MAX(salary);  
D. SELECT MIN(Salary), MAX(salary)FROM (SELECT salary FROM employeesWHERE hire\_date < SYSDATE-365);

**Answer:** BD

#### NEW QUESTION 148

Examine the structure of the SALES table. (Choose two.)

NAME	NULL?	TYPE
PRODUCT_ID	NOT NULL	NUMBER(10)
CUSTOMER_ID	NOT NULL	VARCHAR2(10)
TIME_ID	NOT NULL	DATE
CHANNEL_ID	NOT NULL	NUMBER(5)
PROMO_ID	NOT NULL	NUMBER(5)
QUANTITY_SOLD	NOT NULL	NUMBER(10, 2)
PRICE		NUMBER(10, 2)
AMOUNT_SOLD	NOT NULL	NUMBER(10, 2)

Examine this statement:

```
SQL > CREATE TABLE sales1 (prod_id, cust_id, quantity_sold, price) AS
SELECT product_id, customer_id, quantity_sold, price FROM sales
WHERE 1 = 2;
```

Which two statements are true about the SALES1 table?

- A. It will not be created because the column-specified names in the SELECT and CREATE TABLE clauses do not match.
- B. It will have NOT NULL constraints on the selected columns which had those constraints in the SALES table.
- C. It will not be created because of the invalid WHERE clause.
- D. It is created with no rows.
- E. It has PRIMARY KEY and UNIQUE constraints on the selected columns which had those constraints in the SALES table.

**Answer:** BD

#### NEW QUESTION 150

View the Exhibit and examine the structure of the ORDER\_ITEMS table. (Choose the best answer.)

ORDER_ITEMS				
ORDER_ID	LINE_ITEM_ID	PRODUCT_ID	UNIT_PRICE	QUANTITY
2355	4	2322	19	188
2355	5	2323	17	190
2355	9	2359	226.6	204
2355	1	2289	46	200
2356	5	2308	58	47
2356	6	2311	95	51
2356	1	2264	199.1	38
2356	2	2274	148.5	34
2356	3	2293	98	40
2356	4	2299	72	44
2357	2	2245	462	26
2357	3	2252	788.7	26
2357	4	2257	371.8	29
2357	5	2262	95	29

You must select the ORDER\_ID of the order that has the highest total value among all the orders in the ORDER\_ITEMS table.  
Which query would produce the desired result?

- A. SELECT order\_idFROM order\_itemsGROUP BY order\_idHAVING SUM(unit\_price\*quantity) = (SELECT MAX (SUM(unit\_price\*quantity))FROM order\_items GROUP BY order\_id);
- B. SELECT order\_idFROM order\_itemsWHERE(unit\_price\*quantity) = (SELECT MAX (SUM(unit\_price\*quantity)FROM order\_items) GROUP BY order\_id);
- C. SELECT order\_idFROM order\_itemsWHERE(unit\_price\*quantity) = MAX(unit\_price\*quantity)GROUP BY order\_id);
- D. SELECT order\_idFROM order\_itemsWHERE (unit\_price\*quantity) = (SELECT MAX(unit\_price\*quantity)FROM order\_itemsGROUP BY order\_id)

**Answer:** A

#### NEW QUESTION 153

Evaluate the following CREATE TABLE command:

```
CREATE TABLE order_item
(order_id NUMBER (3),
item-id NUMBER (2),
qty NUMBER (4),
CONSTRAINT ord_itm_id_pk
PRIMARY KEY (order_id, item_id)
USING INDEX
(CREATE INDEX ord_itm_idx
ON order_item (order_id, item_id)));
```

Which statement is true regarding the above SQL statement?

- A. It would execute successfully and only ORD\_ITM\_IDX index would be created.
- B. It would give an error because the USING INDEX clause cannot be used on a composite primary.
- C. It would execute successfully and two indexes ORD\_ITM\_IDX and ORD\_ITM\_ID PK would be created.
- D. It would give an error because the USING INDEX is not permitted in the CRETAE TABLE command.

**Answer: A**

#### NEW QUESTION 155

Evaluate the following query:

```
SELECT INTERVAL '300' MONTH,
INTERVAL '54-2' YEAR TO MONTH,
INTERVAL '11:12:10.1234567' HOUR TO SECOND
FROM dual;
```

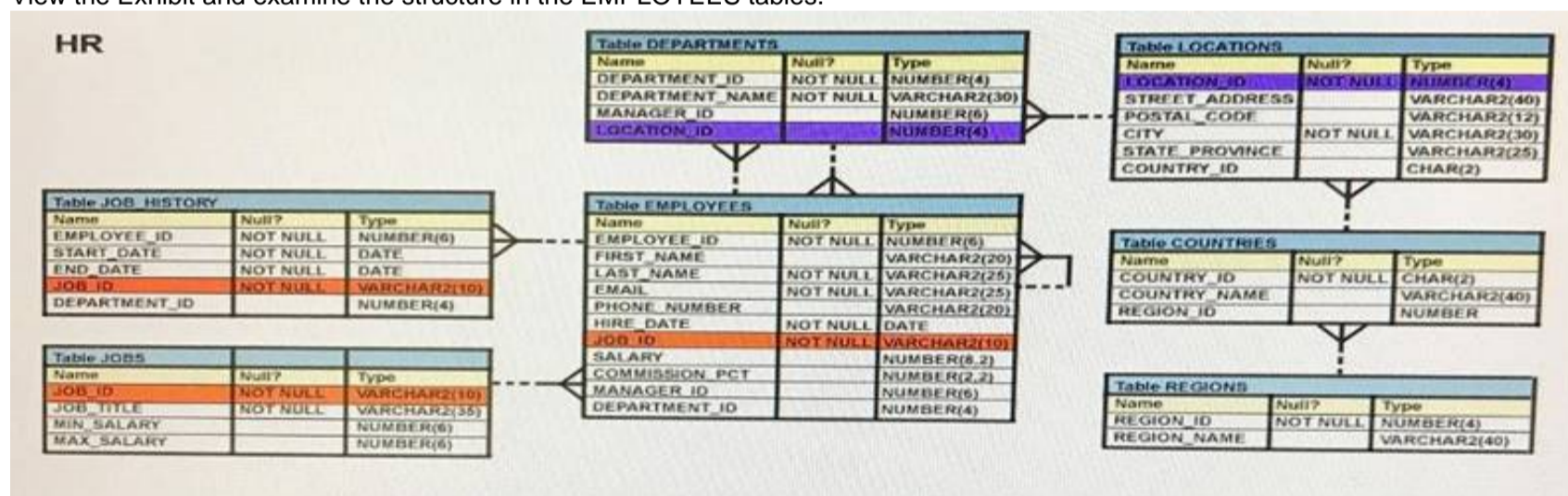
Which is the correct output of the above query?

- A. +00-300, +54-02, +00 11:12:10.123457
- B. +00-300, +00-650, +00 11:12:10.123457
- C. +25-00, +54-02, +00 11:12:10.123457
- D. +25-00, +00-650, +00 11:12:10.123457

**Answer: C**

#### NEW QUESTION 159

View the Exhibit and examine the structure in the EMPLOYEES tables.



Evaluate the following SQL statement: SELECT employee\_id, department\_id FROM employees WHERE department\_id= 50 ORDER BY department\_id UNION SELECT employee\_id, department\_id FROM employees WHERE department\_id=90 UNION SELECT employee\_id, department\_id FROM employees WHERE department\_id=10;

What would be the outcome of the above SQL statement?

- A. The statement would not execute because the positional notation instead of the column name should be used with the ORDER BY clause.
- B. The statement would execute successfully and display all the rows in the ascending order of DEPARTMENT\_ID.
- C. The statement would execute successfully but it will ignore the ORDER BY clause and display the rows in random order.
- D. The statement would not execute because the ORDER BY clause should appear only at the end of the SQL statement, that is, in the last SELECT statement.

**Answer: D**

#### NEW QUESTION 162

The BOOKS\_TRANSACTIONS table exists in your database. SQL>SELECT \* FROM books\_transactions ORDER BY 3; What is the outcome on execution?

- A. The execution fails unless the numeral 3 in the ORDER BY clause is replaced by a column name.
- B. Rows are displayed in the order that they are stored in the table only for the three rows with the lowest values in the key column.
- C. Rows are displayed in the order that they are stored in the table only for the first three rows.
- D. Rows are displayed sorted in ascending order of the values in the third column in the table.

**Answer:** D

#### NEW QUESTION 165

You want to display the date for the first Monday of the next month and issue the following command: SQL>SELECT

```
TO_CHAR(NEXT_DAY(LAST_DAY(SYSDATE), 'MON'),  
'dd "is the first Monday for" fmmonth rrrr') FROM DUAL;
```

What is the outcome?

- A. In generates an error because rrrr should be replaced by rr in the format string.
- B. It executes successfully but does not return the correct result.
- C. It executes successfully and returns the correct result.
- D. In generates an error because TO\_CHAR should be replaced with TO\_DATE.
- E. In generates an error because fm and double quotation marks should not be used in the format string.

**Answer:** C

#### NEW QUESTION 170

Examine the commands used to create DEPARTMENT\_DETAILS and COURSE\_DETAILS:

```
SQL>CREATE TABLE DEPARTMENT_DETAILS (DEPARTMENT_ID NUMBER PRIMARY KEY, DEPARTMENT_NAMEVARCHAR2(50), HODVARCHAR2(50));
```

```
SQL>CREATE TABLE COURSE_DETAILS (COURSE_IDNUMBER PRIMARY KEY, COURSE_NAMEVARCHAR2(50), DEPARTMENT_IDVARCHAR2(50));
```

You want to generate a list of all department IDs along with any course IDs that may have been assigned to them.

Which SQL statement must you use?

- A. SELECT d.department\_id, c.course\_id FROM department\_details d RIGHT OUTER JOIN course\_details c ON (d.department\_id=
- B. department\_id);
- C. SELECT d.department\_id, c.course\_id FROM department\_details d LEFT OUTER JOIN course\_details c ON (d.department\_id=
- D. department\_id);
- E. SELECT d.department\_id, c.course\_id FROM course\_details c LEFT OUTER JOIN department\_details d ON (c.department\_id=
- F. department\_id);
- G. SELECT d.department\_id, c.course\_id FROM department\_details d RIGHT OUTER JOIN course\_details c ON (c.department\_id=
- H. department\_id);

**Answer:** B

#### NEW QUESTION 172

You notice a performance change in your production Oracle 12c database. You want to know which change caused this performance difference.

Which method or feature should you use?

- A. Compare Period ADDM report.
- B. AWR Compare Period report.
- C. Active Session History (ASH) report.
- D. Taking a new snapshot and comparing it with a preserved snapshot.

**Answer:** B

#### NEW QUESTION 175

Examine the structure of the MEMBERS table: NameNull?Type

```
----- MEMBER_IDNOT NULLVARCHAR2 (6)
```

```
FIRST_NAMEVARCHAR2 (50)
```

```
LAST_NAMENOT NULLVARCHAR2 (50)
```

```
ADDRESSVARCHAR2 (50)
```

You execute the SQL statement:

```
SQL > SELECT member_id, ' ', first_name, ' ', last_name "ID FIRSTNAME LASTNAME " FROM members;
```

What is the outcome?

- A. It fails because the alias name specified after the column names is invalid.
- B. It fails because the space specified in single quotation marks after the first two column names is invalid.
- C. It executes successfully and displays the column details in a single column with only the alias column heading.
- D. It executes successfully and displays the column details in three separate columns and replaces only the last column heading with the alias.

**Answer:** D

#### NEW QUESTION 177

Which two statements are true regarding roles? (Choose two.)

- A. A role can be granted to itself.
- B. A role can be granted to PUBLIC.
- C. A user can be granted only one role at any point of time.
- D. The REVOKE command can be used to remove privileges but not roles from other users.
- E. Roles are named groups of related privileges that can be granted to users or other roles.

**Answer:** BE

**Explanation:**

References:

[http://docs.oracle.com/cd/E25054\\_01/network.11111/e16543/authorization.htm#autold28](http://docs.oracle.com/cd/E25054_01/network.11111/e16543/authorization.htm#autold28)

**NEW QUESTION 180**

Examine the structure of the BOOKS\_TRANSACTIONS table:

Name	Null?	Type
TRANSACTION_ID	NOT NULL	VARCHAR2 (6)
BORROWED_DATE		DATE
DUE_DATE		DATE
BOOK_ID		VARCHAR2 (6)
MEMBER_ID		VARCHAR2 (6)

You want to display the member IDs, due date, and late fee as \$2 for all transactions. Which SQL statement must you execute?

- A. SELECT member\_id AS MEMBER\_ID, due\_date AS DUE\_DATE, \$2 AS LATE\_FEE FROM BOOKS\_TRANSACTIONS;
- B. SELECT member\_id 'MEMBER ID', due\_date 'DUE DATE', '\$2 AS LATE FEE' FROM BOOKS\_TRANSACTIONS;
- C. SELECT member\_id AS "MEMBER ID", due\_date AS "DUE DATE", '\$2' AS "LATE FEE" FROM BOOKS\_TRANSACTIONS;
- D. SELECT member\_id AS "MEMBER ID", due\_date AS "DUE DATE", \$2 AS "LATE FEE" FROM BOOKS\_TRANSACTIONS;

**Answer: C**

**NEW QUESTION 181**

Which two statements are true regarding single row functions? (Choose two.)

- A. MOD : returns the quotient of a division.
- B. TRUNC : can be used with NUMBER and DATE values.
- C. CONCAT : can be used to combine any number of values.
- D. SYSDATE : returns the database server current date and time.
- E. INSTR : can be used to find only the first occurrence of a character in a string.
- F. TRIM : can be used to remove all the occurrences of a character from a string.

**Answer: BD**

**NEW QUESTION 183**

Which two statements are true regarding the execution of the correlated subqueries? (Choose two.)

- A. The nested query executes after the outer query returns the row.
- B. The nested query executes first and then the outer query executes.
- C. The outer query executes only once for the result returned by the inner query.
- D. Each row returned by the outer query is evaluated for the results returned by the inner query.

**Answer: AD**

**NEW QUESTION 187**

.....

## Thank You for Trying Our Product

\* 100% Pass or Money Back

All our products come with a 90-day Money Back Guarantee.

\* One year free update

You can enjoy free update one year. 24x7 online support.

\* Trusted by Millions

We currently serve more than 30,000,000 customers.

\* Shop Securely

All transactions are protected by VeriSign!

**100% Pass Your 1Z0-071 Exam with Our Prep Materials Via below:**

<https://www.certleader.com/1Z0-071-dumps.html>