



# Cisco

## Exam Questions 300-410

Implementing Cisco Enterprise Advanced Routing and Services (ENARSI)

### NEW QUESTION 1

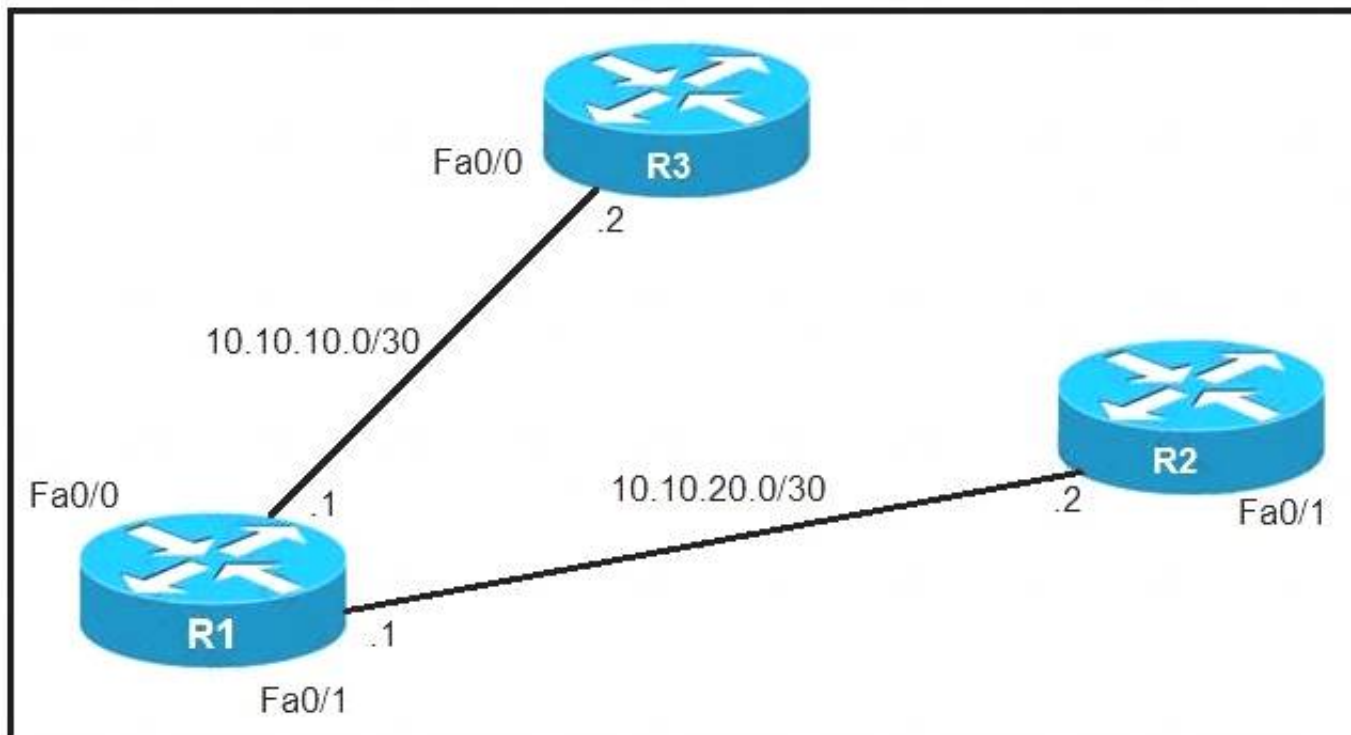
While working with software images, an engineer observes that Cisco DNA Center cannot upload its software image directly from the device. Why is the image not uploading?

- A. The device must be resynced to Cisco DNA Center.
- B. The software image for the device is in install mode.
- C. The device has lost connectivity to Cisco DNA Center.
- D. The software image for the device is in bundle mode

**Answer: B**

### NEW QUESTION 2

Refer to the exhibit.



An IP SLA was configured on router R1 that allows the default route to be modified in the event that Fa0/0 loses reachability with the router R3 Fa0/0 interface. The route has changed to flow through router R2. Which debug command is used to troubleshoot this issue?

- A. debug ip flow
- B. debug ip sla error
- C. debug ip routing
- D. debug ip packet

**Answer: C**

### NEW QUESTION 3

An engineer is trying to copy an IOS file from one router to another router by using TFTP. Which two actions are needed to allow the file to copy? (Choose two.)

- A. Copy the file to the destination router with the copy tftp: flash: command
- B. Enable the TFTP server on the source router with the tftp-server flash: <filename> command
- C. TFTP is not supported in recent IOS versions, so an alternative method must be used
- D. Configure a user on the source router with the username tftp password tftp command
- E. Configure the TFTP authentication on the source router with the tftp-server authentication local command

**Answer: AB**

### NEW QUESTION 4

A network engineer is investigating a flapping (up/down) interface issue on a core switch that is synchronized to an NTP server. Log output currently does not show the time of the flap. Which command allows the logging on the switch to show the time of the flap according to the clock on the device?

- A. service timestamps log uptime
- B. clock summer-time mst recurring 2 Sunday mar 2:00 1 Sunday nov 2:00
- C. service timestamps log datetime localtime show-timezone
- D. clock calendar-valid

**Answer: A**

### NEW QUESTION 5

Refer to the exhibit.

```
R1(config)#route-map ADD permit 20
R1(config-route-map)#set tag 1

R1(config)#router ospf1
R1(config-router)#redistribute rip subnets route-map ADD
```

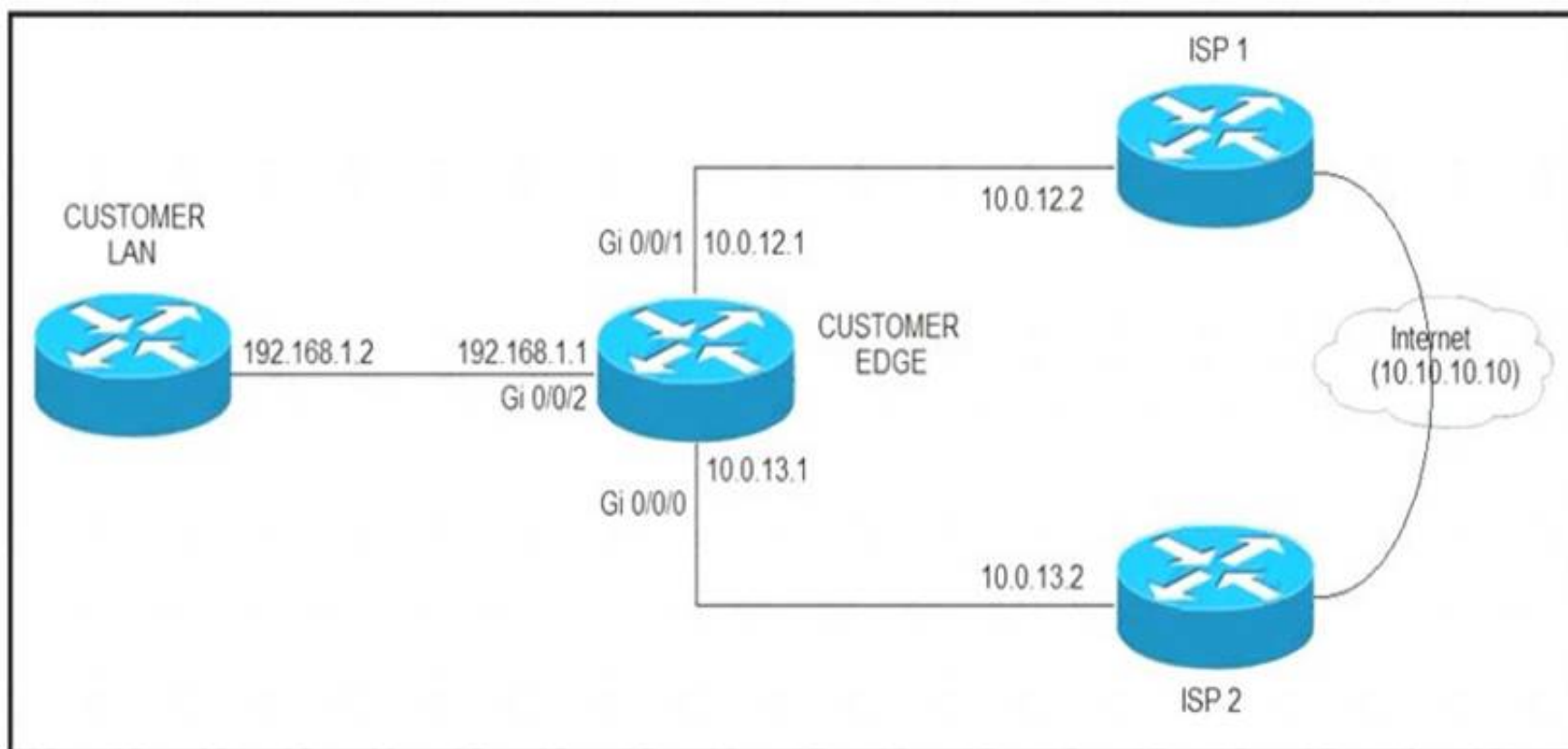
Which statement about R1 is true?

- A. OSPF redistributes RIP routes only if they have a tag of one.
- B. RIP learned routes are distributed to OSPF with a tag value of one.
- C. R1 adds one to the metric for RIP learned routes before redistributing to OSPF.
- D. RIP routes are redistributed to OSPF without any changes.

**Answer: B**

#### NEW QUESTION 6

Refer to the exhibit.



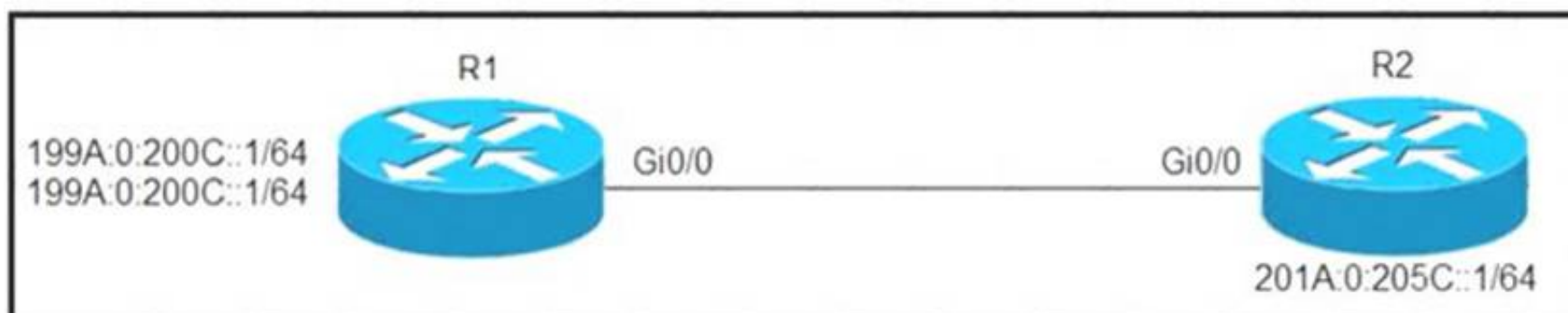
ISP 1 and ISP 2 directly connect to the Internet. A customer is tracking both ISP links to achieve redundancy and cannot see the Cisco IOS IP SLA tracking output on the router console. Which command is missing from the IP SLA configuration?

- A. Start-time 00:00
- B. Start-time 0
- C. Start-time immediately
- D. Start-time now

**Answer: D**

#### NEW QUESTION 7

Refer to the exhibit.



Which configuration denies Telnet traffic to router 2 from 198A:0:200C::1/64?

- A. `ipv6 access-list Deny_Telnet sequence 10 deny tcp host 198A:0:200C::1/64 host 201A:0:205C::1/64 eq telnet`  
`!`  
`int Gi0/0`  
`ipv6 traffic-filter Deny_Telnet in`  
`!`
- B. `ipv6 access-list Deny_Telnet sequence 10 deny tcp host 198A:0:200C::1/64 host 201A:0:205C::1/64 eq telnet`  
`!`  
`int Gi0/0`  
`ipv6 access-map Deny_Telnet in`  
`!`
- C. `ipv6 access-list Deny_Telnet sequence 10 deny tcp host 198A:0:200C::1/64 host 201A:0:205C::1/64`  
`!`  
`int Gi0/0`  
`ipv6 access-map Deny_Telnet in`  
`!`
- D. `ipv6 access-list Deny_Telnet sequence 10 deny tcp host 198A:0:200C::1/64 host 201A:0:205C::1/64`  
`!`  
`int Gi0/0`  
`ipv6 traffic-filter Deny_Telnet in`  
`!`

- A. Option A
- B. Option B
- C. Option C
- D. Option D

**Answer:** A

#### NEW QUESTION 8

Refer to the exhibit.

```

service timestamps debug datetime msec
service timestamps log datetime
clock timezone MST -7 0
clock summer-time MST recurring
ntp authentication-key 1 md5 00101A0B0152181206224747071E 7
ntp server 10.10.10.10

R1#show clock
*06:13:44.045 MST Sun Dec 30 2018

R1#conf t
Enter configuration commands, one per line. End with CNTL/Z.
R1(config) #logging host 10.10.10.20
R1(config) #end
R1#
*Dec 30 13:15:28: %SYS-5-CONFIG_I: Configured from console by console
R1#
*Dec 30 13:15:28: %SYS-6-LOGGINGHOST_STARTSTOP: Logging to host 10.10.10.20 port 514
started - CLI initiated

```

An administrator noticed that after a change was made on R1, the timestamps on the system logs did not match the clock. What is the reason for this error?



- A. An authentication error with the NTP server results in an incorrect timestamp.
- B. The keyword localtime is not defined on the timestamp service command.
- C. The NTP server is in a different time zone.
- D. The system clock is set incorrectly to summer-time hours.

**Answer: D**

#### NEW QUESTION 9

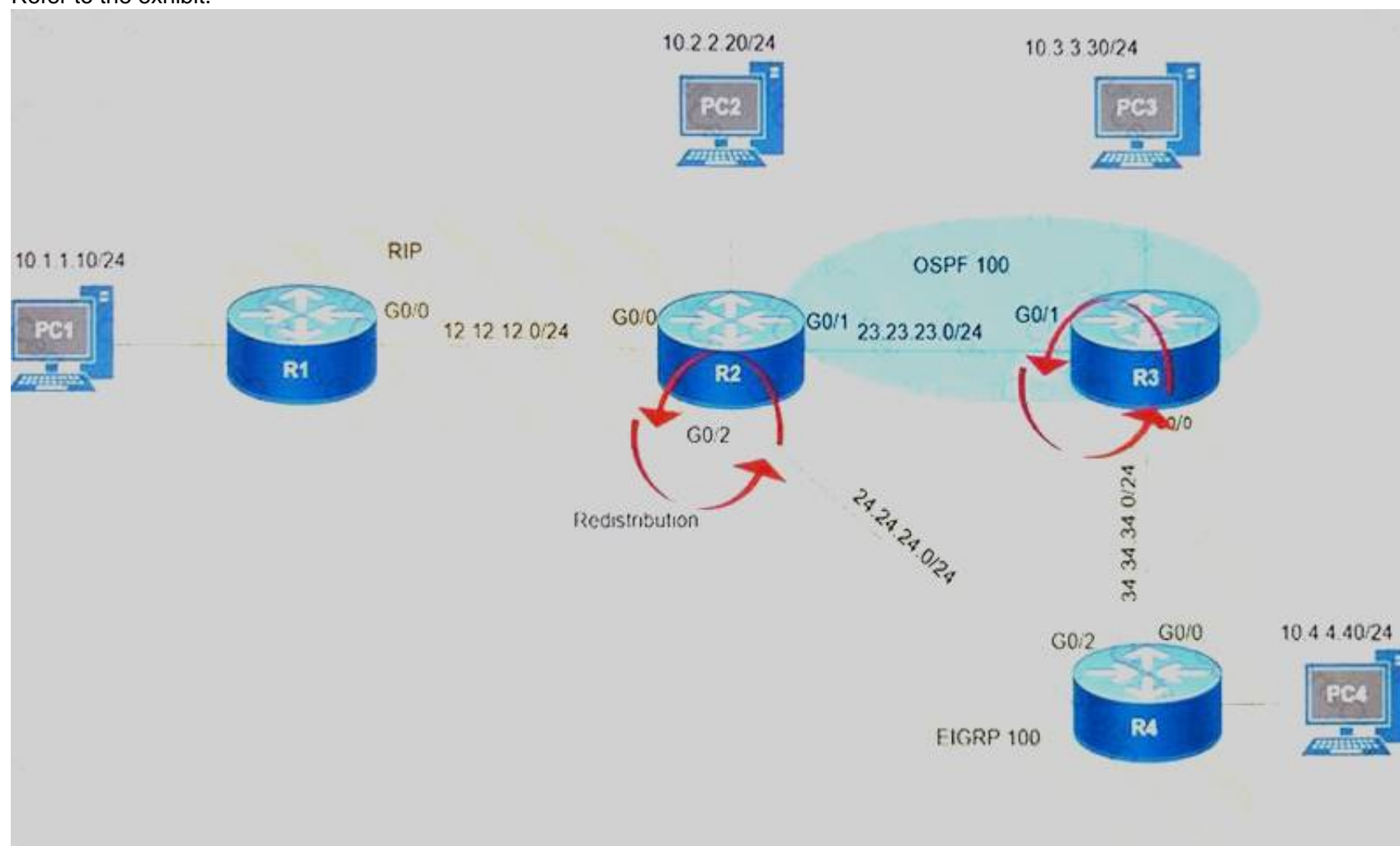
Which configuration adds an IPv4 interface to an OSPFv3 process in OSPFv3 address family configuration?

- A. router ospfv3 1 address-family ipv4
- B. Router(config-router)#ospfv3 1 ipv4 area 0
- C. Router(config-if)#ospfv3 1 ipv4 area 0
- D. router ospfv3 1 address-family ipv4 unicast

**Answer: B**

#### NEW QUESTION 10

Refer to the exhibit.



After redistribution is enabled between the routing protocols; PC2, PC3, and PC4 cannot reach PC1. Which action can the engineer take to solve the issue so that all the PCs are reachable?

- A. Set the administrative distance 100 under the RIP process on R2.
- B. Filter the prefix 10.1.1.0/24 when redistributed from OSPF to EIGRP.
- C. Filter the prefix 10.1.1.0/24 when redistributed from RIP to EIGRP.
- D. Redistribute the directly connected interfaces on R2.

**Answer: B**

#### NEW QUESTION 10

An engineer configured the wrong default gateway for the Cisco DNA Center enterprise interface during the install. Which command must the engineer run to correct the configuration?

- A. sudo mangle-config update
- B. sudo mangle install config update
- C. sudo mangle reinstall
- D. sudo update config install

**Answer: A**

#### NEW QUESTION 15

Which command allows traffic to load-balance in an MPLS Layer 3 VPN configuration?

- A. multi-paths eibgp 2
- B. maximum-paths 2
- C. maximum-paths ibgp 2
- D. multi-paths 2

**Answer: B**

**NEW QUESTION 18**

Refer to the exhibit.

```
R1#show running-config | include aaa
aaa new-model
aaa authentication login default group tacacs+ local
aaa authentication login Console local
R1#show running-config | section line
line con 0
  logging synchronous
R1#
```

An engineer is trying to configure local authentication on the console line, but the device is trying to authenticate using TACACS+. Which action produces the desired configuration?

- A. Add the aaa authentication login default none command to the global configuration.
- B. Replace the capital “C” with a lowercase “c” in the aaa authentication login Console local command.
- C. Add the aaa authentication login default group tacacs+ local-case command to the global configuration.
- D. Add the login authentication Console command to the line configuration

**Answer:** D

**NEW QUESTION 19**

Drag and drop the MPLS VPN concepts from the left onto the correct descriptions on the right.

route distinguisher	propagates VPN reachability information
route target	distributes labels for traffic engineering
Resource Reservation Protocol	uniquely identifies a customer prefix
multiprotocol BGP	controls the import/export of customer prefixes

- A. Mastered
- B. Not Mastered

**Answer:** A

**Explanation:**

route distinguisher	multiprotocol BGP
route target	Resource Reservation Protocol
Resource Reservation Protocol	route distinguisher
multiprotocol BGP	route target

**NEW QUESTION 21**

Refer to the exhibit.

```
Router#show running-config | include ip route
ip route 192.168.2.2 255.255.255.255 209.165.200.225 130
Router#show ip route

<output omitted>

Gateway of last resort is not set

    192.168.1.0/32 is subnetted, 1 subnets
C       192.168.1.1 is directly connected, Loopback0
    192.168.2.0/32 is subnetted, 1 subnets
O       192.168.2.2[110/11] via 192.168.12.2, 00:52:09, Ethernet0/0
    192.168.12.0/24 is variably subnetted, 2 subnets, 2 masks
C       192.168.12.0/24 is directly connected, Ethernet0/0
L       192.168.12.1/32 is directly connected, Ethernet0/0
    209.165.200.0/24 is variably subnetted, 2 subnets, 2 masks
C       209.165.200.0/24 is directly connected, Ethernet0/1
        209.165.200.226/32 is directly connected, Ethernet0/1
```

An engineer configures a static route on a router, but when the engineer checks the route to the destination, a different next hop is chosen. What is the reason for this?

- A. Dynamic routing protocols always have priority over static routes.
- B. The metric of the OSPF route is lower than the metric of the static route.
- C. The configured AD for the static route is higher than the AD of OSPF.
- D. The syntax of the static route is not valid, so the route is not considered.

**Answer: C**

#### NEW QUESTION 25

Refer to the exhibit.

```
Router#show access-lists
Standard IP access list 1
    10 permit 192.168.2.2 (1 match)
Router#
Router#show route-map
route-map RM-OSPF-DL, permit, sequence 10
  Match clauses:
    ip address (access-lists): 1
  Set clauses:
    Policy routing matches: 0 packets, 0 bytes
Router#
Router#show running-config | section ospf
router ospf 1
  network 192.168.1.1 0.0.0.0 area 0
  network 192.168.12.0 0.0.0.255 area 0
  distribute-list route-map RM-OSPF-DL in
Router#
```

An engineer is trying to block the route to 192.168.2.2 from the routing table by using the configuration that is shown. The route is still present in the routing table as an OSPF route. Which action blocks the route?

- A. Use an extended access list instead of a standard access list.
- B. Change sequence 10 in the route-map command from permit to deny.
- C. Use a prefix list instead of an access list in the route map.
- D. Add this statement to the route map: route-map RM-OSPF-DL deny 20.

**Answer: B**

#### NEW QUESTION 30

Which list defines the contents of an MPLS label?

- A. 20-bit label; 3-bit traffic class; 1-bit bottom stack; 8-bit TTL
- B. 32-bit label; 3-bit traffic class; 1-bit bottom stack; 8-bit TTL
- C. 20-bit label; 3-bit flow label; 1-bit bottom stack; 8-bit hop limit
- D. 32-bit label; 3-bit flow label; 1-bit bottom stack; 8-bit hop limit



**Answer:** A

**NEW QUESTION 33**

Which statement about IPv6 ND inspection is true?

- A. It learns and secures bindings for stateless autoconfiguration addresses in Layer 3 neighbor tables.
- B. It learns and secures bindings for stateless autoconfiguration addresses in Layer 2 neighbor tables.
- C. It learns and secures bindings for stateful autoconfiguration addresses in Layer 3 neighbor tables.
- D. It learns and secures bindings for stateful autoconfiguration addresses in Layer 2 neighbor tables.

**Answer:** B

**NEW QUESTION 36**

.....



## About Exambible

### *Your Partner of IT Exam*

## Found in 1998

Exambible is a company specialized on providing high quality IT exam practice study materials, especially Cisco CCNA, CCDA, CCNP, CCIE, Checkpoint CCSE, CompTIA A+, Network+ certification practice exams and so on. We guarantee that the candidates will not only pass any IT exam at the first attempt but also get profound understanding about the certificates they have got. There are so many alike companies in this industry, however, Exambible has its unique advantages that other companies could not achieve.

## Our Advances

### \* 99.9% Uptime

All examinations will be up to date.

### \* 24/7 Quality Support

We will provide service round the clock.

### \* 100% Pass Rate

Our guarantee that you will pass the exam.

### \* Unique Gurantee

If you do not pass the exam at the first time, we will not only arrange FULL REFUND for you, but also provide you another exam of your claim, ABSOLUTELY FREE!

### NEW QUESTION 1

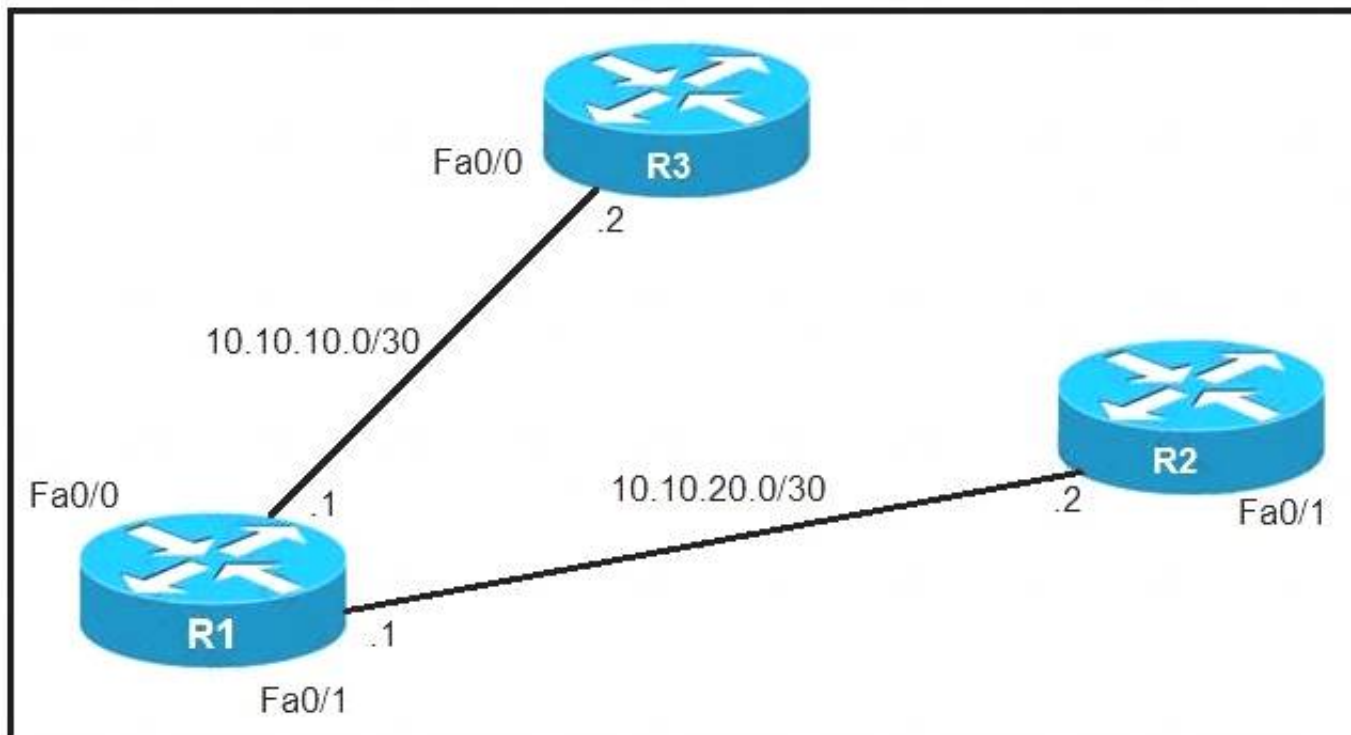
While working with software images, an engineer observes that Cisco DNA Center cannot upload its software image directly from the device. Why is the image not uploading?

- A. The device must be resynced to Cisco DNA Center.
- B. The software image for the device is in install mode.
- C. The device has lost connectivity to Cisco DNA Center.
- D. The software image for the device is in bundle mode

**Answer: B**

### NEW QUESTION 2

Refer to the exhibit.



An IP SLA was configured on router R1 that allows the default route to be modified in the event that Fa0/0 loses reachability with the router R3 Fa0/0 interface. The route has changed to flow through router R2. Which debug command is used to troubleshoot this issue?

- A. debug ip flow
- B. debug ip sla error
- C. debug ip routing
- D. debug ip packet

**Answer: C**

### NEW QUESTION 3

An engineer is trying to copy an IOS file from one router to another router by using TFTP. Which two actions are needed to allow the file to copy? (Choose two.)

- A. Copy the file to the destination router with the copy tftp: flash: command
- B. Enable the TFTP server on the source router with the tftp-server flash: <filename> command
- C. TFTP is not supported in recent IOS versions, so an alternative method must be used
- D. Configure a user on the source router with the username tftp password tftp command
- E. Configure the TFTP authentication on the source router with the tftp-server authentication local command

**Answer: AB**

### NEW QUESTION 4

A network engineer is investigating a flapping (up/down) interface issue on a core switch that is synchronized to an NTP server. Log output currently does not show the time of the flap. Which command allows the logging on the switch to show the time of the flap according to the clock on the device?

- A. service timestamps log uptime
- B. clock summer-time mst recurring 2 Sunday mar 2:00 1 Sunday nov 2:00
- C. service timestamps log datetime localtime show-timezone
- D. clock calendar-valid

**Answer: A**

### NEW QUESTION 5

Refer to the exhibit.

```
R1(config)#route-map ADD permit 20
R1(config-route-map)#set tag 1

R1(config)#router ospf1
R1(config-router)#redistribute rip subnets route-map ADD
```

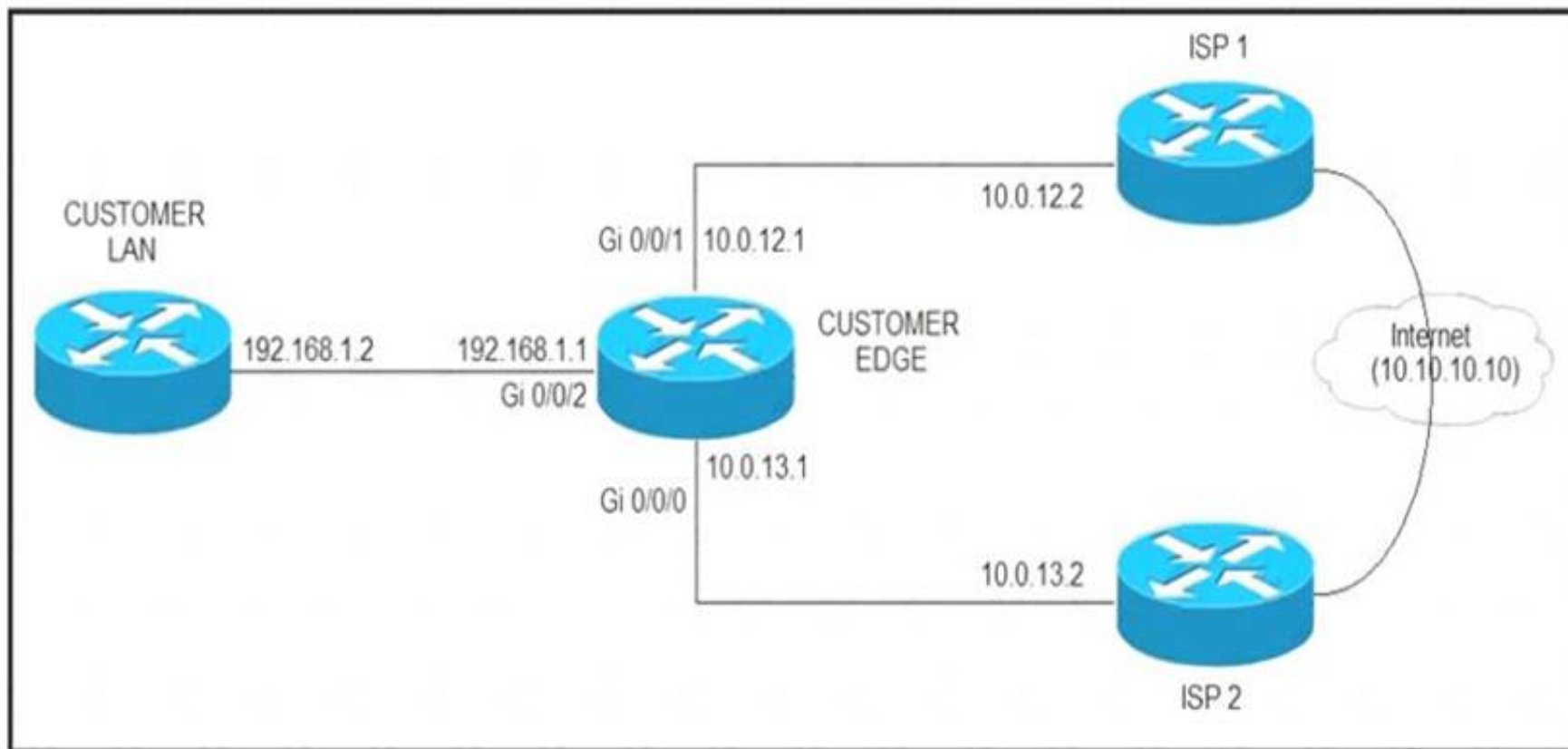
Which statement about R1 is true?

- A. OSPF redistributes RIP routes only if they have a tag of one.
- B. RIP learned routes are distributed to OSPF with a tag value of one.
- C. R1 adds one to the metric for RIP learned routes before redistributing to OSPF.
- D. RIP routes are redistributed to OSPF without any changes.

**Answer: B**

#### NEW QUESTION 6

Refer to the exhibit.



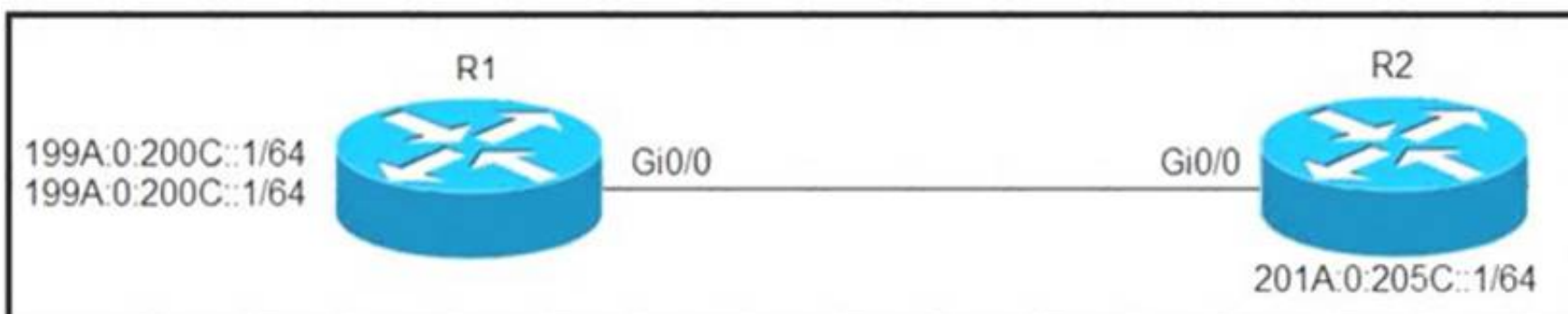
ISP 1 and ISP 2 directly connect to the Internet. A customer is tracking both ISP links to achieve redundancy and cannot see the Cisco IOS IP SLA tracking output on the router console. Which command is missing from the IP SLA configuration?

- A. Start-time 00:00
- B. Start-time 0
- C. Start-time immediately
- D. Start-time now

**Answer: D**

#### NEW QUESTION 7

Refer to the exhibit.



Which configuration denies Telnet traffic to router 2 from 198A:0:200C::1/64?

- A. `ipv6 access-list Deny_Telnet sequence 10 deny tcp host 198A:0:200C::1/64 host 201A:0:205C::1/64 eq telnet`  
`!`  
`int Gi0/0`  
`ipv6 traffic-filter Deny_Telnet in`  
`!`
- B. `ipv6 access-list Deny_Telnet sequence 10 deny tcp host 198A:0:200C::1/64 host 201A:0:205C::1/64 eq telnet`  
`!`  
`int Gi0/0`  
`ipv6 access-map Deny_Telnet in`  
`!`
- C. `ipv6 access-list Deny_Telnet sequence 10 deny tcp host 198A:0:200C::1/64 host 201A:0:205C::1/64`  
`!`  
`int Gi0/0`  
`ipv6 access-map Deny_Telnet in`  
`!`
- D. `ipv6 access-list Deny_Telnet sequence 10 deny tcp host 198A:0:200C::1/64 host 201A:0:205C::1/64`  
`!`  
`int Gi0/0`  
`ipv6 traffic-filter Deny_Telnet in`  
`!`

- A. Option A
- B. Option B
- C. Option C
- D. Option D

**Answer:** A

#### NEW QUESTION 8

Refer to the exhibit.

```

service timestamps debug datetime msec
service timestamps log datetime
clock timezone MST -7 0
clock summer-time MST recurring
ntp authentication-key 1 md5 00101A0B0152181206224747071E 7
ntp server 10.10.10.10

R1#show clock
*06:13:44.045 MST Sun Dec 30 2018

R1#conf t
Enter configuration commands, one per line. End with CNTL/Z.
R1(config) #logging host 10.10.10.20
R1(config) #end
R1#
*Dec 30 13:15:28: %SYS-5-CONFIG_I: Configured from console by console
R1#
*Dec 30 13:15:28: %SYS-6-LOGGINGHOST_STARTSTOP: Logging to host 10.10.10.20 port 514
started - CLI initiated

```

An administrator noticed that after a change was made on R1, the timestamps on the system logs did not match the clock. What is the reason for this error?



- A. An authentication error with the NTP server results in an incorrect timestamp.
- B. The keyword localtime is not defined on the timestamp service command.
- C. The NTP server is in a different time zone.
- D. The system clock is set incorrectly to summer-time hours.

**Answer: D**

#### NEW QUESTION 9

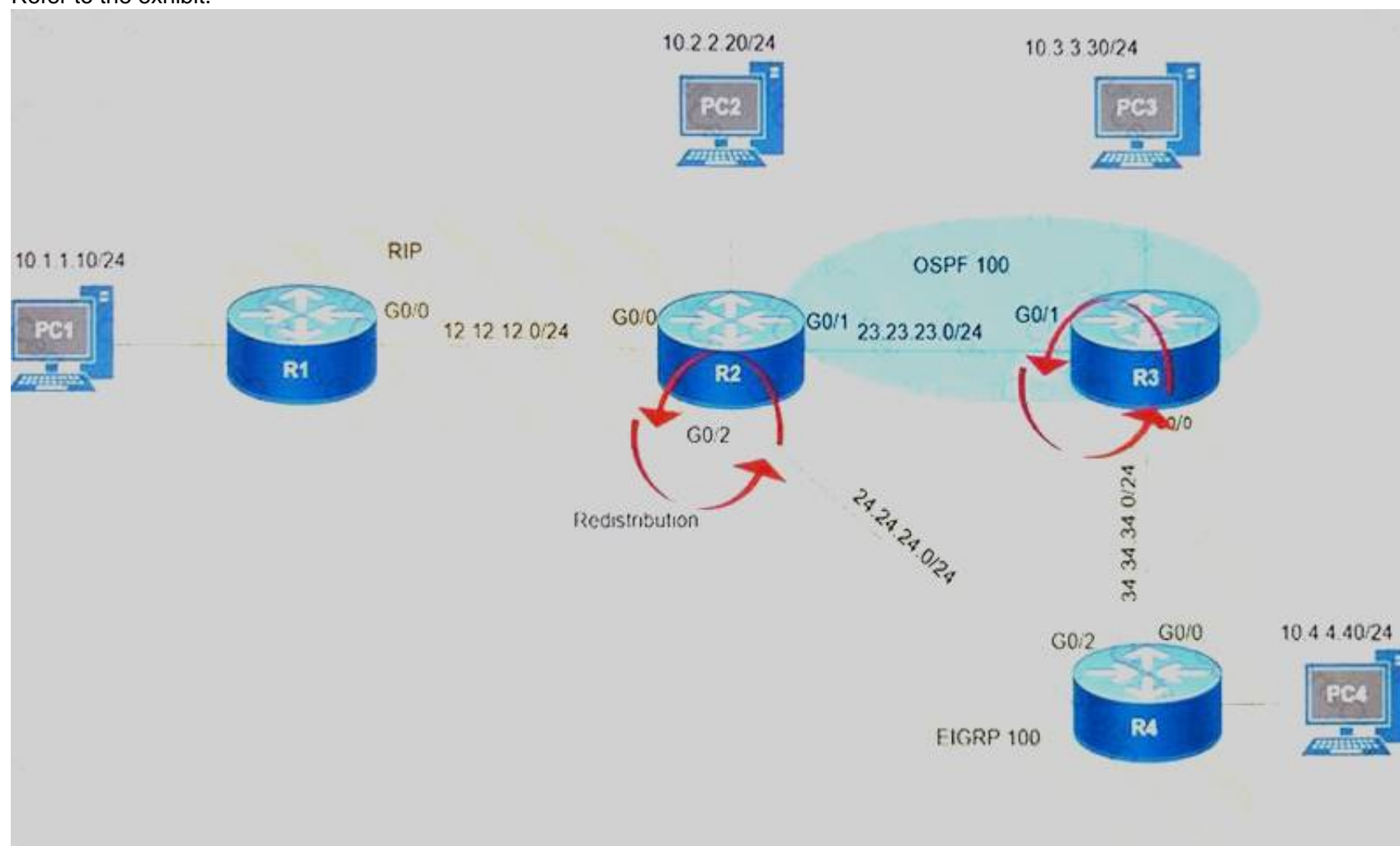
Which configuration adds an IPv4 interface to an OSPFv3 process in OSPFv3 address family configuration?

- A. router ospfv3 1 address-family ipv4
- B. Router(config-router)#ospfv3 1 ipv4 area 0
- C. Router(config-if)#ospfv3 1 ipv4 area 0
- D. router ospfv3 1 address-family ipv4 unicast

**Answer: B**

#### NEW QUESTION 10

Refer to the exhibit.



After redistribution is enabled between the routing protocols; PC2, PC3, and PC4 cannot reach PC1. Which action can the engineer take to solve the issue so that all the PCs are reachable?

- A. Set the administrative distance 100 under the RIP process on R2.
- B. Filter the prefix 10.1.1.0/24 when redistributed from OSPF to EIGRP.
- C. Filter the prefix 10.1.1.0/24 when redistributed from RIP to EIGRP.
- D. Redistribute the directly connected interfaces on R2.

**Answer: B**

#### NEW QUESTION 10

An engineer configured the wrong default gateway for the Cisco DNA Center enterprise interface during the install. Which command must the engineer run to correct the configuration?

- A. sudo maglev-config update
- B. sudo maglev install config update
- C. sudo maglev reinstall
- D. sudo update config install

**Answer: A**

#### NEW QUESTION 15

Which command allows traffic to load-balance in an MPLS Layer 3 VPN configuration?

- A. multi-paths eibgp 2
- B. maximum-paths 2
- C. maximum-paths ibgp 2
- D. multi-paths 2

**Answer: B**

#### NEW QUESTION 18

Refer to the exhibit.

```
R1#show running-config | include aaa
aaa new-model
aaa authentication login default group tacacs+ local
aaa authentication login Console local
R1#show running-config | section line
line con 0
 logging synchronous
R1#
```

An engineer is trying to configure local authentication on the console line, but the device is trying to authenticate using TACACS+. Which action produces the desired configuration?

- A. Add the aaa authentication login default none command to the global configuration.
- B. Replace the capital "C" with a lowercase "c" in the aaa authentication login Console local command.
- C. Add the aaa authentication login default group tacacs+ local-case command to the global configuration.
- D. Add the login authentication Console command to the line configuration

**Answer:** D

#### NEW QUESTION 19

Drag and drop the MPLS VPN concepts from the left onto the correct descriptions on the right.

route distinguisher	propagates VPN reachability information
route target	distributes labels for traffic engineering
Resource Reservation Protocol	uniquely identifies a customer prefix
multiprotocol BGP	controls the import/export of customer prefixes

- A. Mastered
- B. Not Mastered

**Answer:** A

**Explanation:**

route distinguisher	multiprotocol BGP
route target	Resource Reservation Protocol
Resource Reservation Protocol	route distinguisher
multiprotocol BGP	route target

#### NEW QUESTION 21

Refer to the exhibit.

```
Router#show running-config | include ip route
ip route 192.168.2.2 255.255.255.255 209.165.200.225 130
Router#show ip route

<output omitted>

Gateway of last resort is not set

    192.168.1.0/32 is subnetted, 1 subnets
C       192.168.1.1 is directly connected, Loopback0
    192.168.2.0/32 is subnetted, 1 subnets
O       192.168.2.2[110/11] via 192.168.12.2, 00:52:09, Ethernet0/0
    192.168.12.0/24 is variably subnetted, 2 subnets, 2 masks
C       192.168.12.0/24 is directly connected, Ethernet0/0
L       192.168.12.1/32 is directly connected, Ethernet0/0
    209.165.200.0/24 is variably subnetted, 2 subnets, 2 masks
C       209.165.200.0/24 is directly connected, Ethernet0/1
        209.165.200.226/32 is directly connected, Ethernet0/1
```

An engineer configures a static route on a router, but when the engineer checks the route to the destination, a different next hop is chosen. What is the reason for this?

- A. Dynamic routing protocols always have priority over static routes.
- B. The metric of the OSPF route is lower than the metric of the static route.
- C. The configured AD for the static route is higher than the AD of OSPF.
- D. The syntax of the static route is not valid, so the route is not considered.

**Answer: C**

#### NEW QUESTION 25

Refer to the exhibit.

```
Router#show access-lists
Standard IP access list 1
    10 permit 192.168.2.2 (1 match)
Router#
Router#show route-map
route-map RM-OSPF-DL, permit, sequence 10
  Match clauses:
    ip address (access-lists): 1
  Set clauses:
    Policy routing matches: 0 packets, 0 bytes
Router#
Router#show running-config | section ospf
router ospf 1
  network 192.168.1.1 0.0.0.0 area 0
  network 192.168.12.0 0.0.0.255 area 0
  distribute-list route-map RM-OSPF-DL in
Router#
```

An engineer is trying to block the route to 192.168.2.2 from the routing table by using the configuration that is shown. The route is still present in the routing table as an OSPF route. Which action blocks the route?

- A. Use an extended access list instead of a standard access list.
- B. Change sequence 10 in the route-map command from permit to deny.
- C. Use a prefix list instead of an access list in the route map.
- D. Add this statement to the route map: route-map RM-OSPF-DL deny 20.

**Answer: B**

#### NEW QUESTION 30

Which list defines the contents of an MPLS label?

- A. 20-bit label; 3-bit traffic class; 1-bit bottom stack; 8-bit TTL
- B. 32-bit label; 3-bit traffic class; 1-bit bottom stack; 8-bit TTL
- C. 20-bit label; 3-bit flow label; 1-bit bottom stack; 8-bit hop limit
- D. 32-bit label; 3-bit flow label; 1-bit bottom stack; 8-bit hop limit



**Answer:** A

**NEW QUESTION 33**

Which statement about IPv6 ND inspection is true?

- A. It learns and secures bindings for stateless autoconfiguration addresses in Layer 3 neighbor tables.
- B. It learns and secures bindings for stateless autoconfiguration addresses in Layer 2 neighbor tables.
- C. It learns and secures bindings for stateful autoconfiguration addresses in Layer 3 neighbor tables.
- D. It learns and secures bindings for stateful autoconfiguration addresses in Layer 2 neighbor tables.

**Answer:** B

**NEW QUESTION 36**

.....



## Relate Links

**100% Pass Your 300-410 Exam with Exambible Prep Materials**

<https://www.exambible.com/300-410-exam/>

## Contact us

We are proud of our high-quality customer service, which serves you around the clock 24/7.

Viste - <https://www.exambible.com/>