

## 220-1001 Dumps

### CompTIA A+ Certification Exam: Core 1

<https://www.certleader.com/220-1001-dumps.html>



**NEW QUESTION 1**

A technician was called to check an unexpected clicking noise on a desktop that has become more frequent every time a video editing application is loaded. The system fans have been replaced, but the clicking noise remains. Diagnostics have been run on the video card. Which of the following should me the technician do FIRST?

- A. Replace the hard drive.
- B. Replace the video card.
- C. Do a System Restore.
- D. Perform a full data backup.
- E. Scan the system for viruses.

**Answer:** D

**NEW QUESTION 2**

A technician has noticed that when at company headquarters the laptop connection to the Internet is more responsive than when using the company-provided phone as a hotspot. The technician updated the drivers on the WiFi NIC without resolution and then verified the configuration on the WiFi was correct. Which of the following configurations could cause the decreased performance?

- A. The connection if throttled.
- B. There is a low RFID signal.
- C. SSID is not found.
- D. It is out of range.

**Answer:** A

**NEW QUESTION 3**

The graphics has an issue with printing certain files. The printer does not print the complete image on larger files. A technician verifies the network speed of the printer is set to 1GB and that regular text files print without issue. Which of the following is the MOST likely cause of this problem?

- A. The printer needs more RAM
- B. The print server is timing out
- C. The users are not printing in post-script mode
- D. The printer network connection is set to half duplex

**Answer:** A

**NEW QUESTION 4**

A laptop is connected to a conference room projector in extended display mode. The desktop icons appear normal on the laptop, but are disproportionate and illegible on the projector screen. Which of the following should the technician check?

- A. Video resolution
- B. HDMI connection
- C. Keystone
- D. Focus

**Answer:** A

**NEW QUESTION 5**

A user is unable to access websites and has reported connectivity issues with pop-ups on the screen. A technician removes malware, and then is able to ping the router and access the websites.

Which of the following NEXT steps should the technician perform in troubleshooting this issue? (Choose two.)

- A. Documents findings, actions, and outcomes.
- B. Reboot the device to verify the fix.
- C. Reconnect the device to the network.
- D. Verify the settings in IPConfig.
- E. Research the problem based on symptoms.
- F. Run a virus scan.

**Answer:** AF

**NEW QUESTION 6**

A technician wants to set up a virtual machine in a public cloud environment. Which of the following cloud models should the technician use?

- A. IaaS
- B. SaaS
- C. PaaS
- D. DBaaS

**Answer:** A

**NEW QUESTION 7**

Which of the following cable types should be used to connect a cable modem to a SOHO router?

- A. Thunderbolt

- B. Coaxial
- C. USB
- D. Ethernet

**Answer:** D

#### NEW QUESTION 8

Some users are unable to access the Internet from their workstations. A technician runs the ipconfig command on one of the workstations and sees the following:

```
IPv4 address 192.168.1.27
Subnet mask 255.255.255.0
Default gateway 192.168.1.1
```

The technician pings 8.8.8.8 and gets no response. Next, the technician pings 192.168.1.1 and gets no response. The technician is able to successfully ping an adjacent workstation but cannot ping the print server on the floor below. Which of the following is the MOST likely cause of the Internet connectivity issue in the office?

- A. There is a problem with a router in the office
- B. There is a problem with a DNS server in the office
- C. The users are not getting correct IP addresses from the DHCP server
- D. The wireless access point in the area is down

**Answer:** A

#### NEW QUESTION 9

Which of the following adapters may suffer signal degradation or data loss due to conversion?

- A. DVI to HDMI
- B. HDMI to DisplayPort
- C. USB to Ethernet
- D. DVI-D to VGA

**Answer:** D

#### NEW QUESTION 10

A customer wants to purchase a new home computer. The machine will mainly be used for internal browsing and streaming video, except on weekends when the customers' son will use it to play games with friends.

Which of the following should the technician focus on to meet these requirements?

- A. 80mm case fans
- B. Four-core processor
- C. RAID 5 array
- D. 16GB DDR2 memory
- E. Dual monitors
- F. Encrypted hard drive

**Answer:** BD

#### NEW QUESTION 10

A customer's laptop display has suddenly become very dim. The image of the display can only be seen with a bright, external light, as adjusting the brightness/contracts controls does not cause much change.

Which of the following components MOST likely needs to be replaced?

- A. LCD panel
- B. Inverter
- C. Video card
- D. Digitizer

**Answer:** B

#### NEW QUESTION 14

A user is having a problem with printing a specific document type.

The network printer OCP shows that the printer is online with no errors. Other users are not having the same issue. The user sends the document to another printer and the document prints.

Which of the following should a technician do FIRST in troubleshooting the problem?

- A. Stop and restart the PC print spooler service.
- B. Verify the user is sending the document to the correct printer queue.
- C. Have each user send the same document to the correct printer queue.
- D. Stop and restart the print server queues, and then have the user resend the document.

**Answer:** B

#### NEW QUESTION 18

You need to configure your mobile device to send and receive electronic messages from your company. You must use the company's WLAN as all e-mail services are on default non-secure ports.

The company's WLAN is broadcasting across the company for easier access. Both incoming and outgoing servers require login credentials.

Use the following parameters:

- Email address tech@techies.com
- Password P@SSwOrd
- Pop techies.com Port 110 Security: None
- IMAP techies.com Port 993 Security SSL
- smtp.techies.com Port 465 Security: TLS
- Company SSID Techies
- Security WPA2
- Passphrase P@SSwOrd
- SSID is not broadcasted

INSTRUCTIONS:  
Update the mobile device's parameters to fit the criteria.

If at any time you would like to bring back the initial state of the simulation, please click the Reset All button.



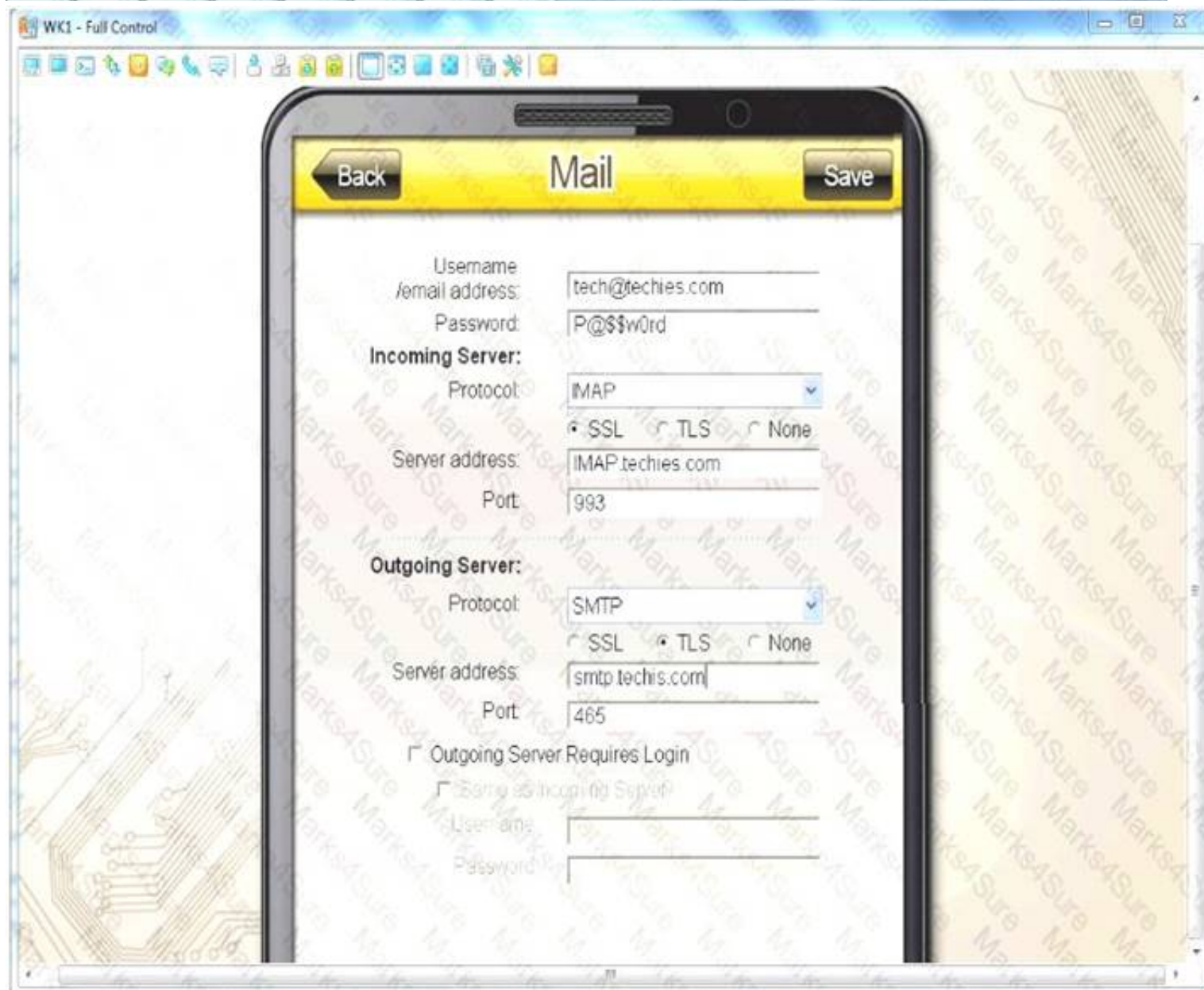
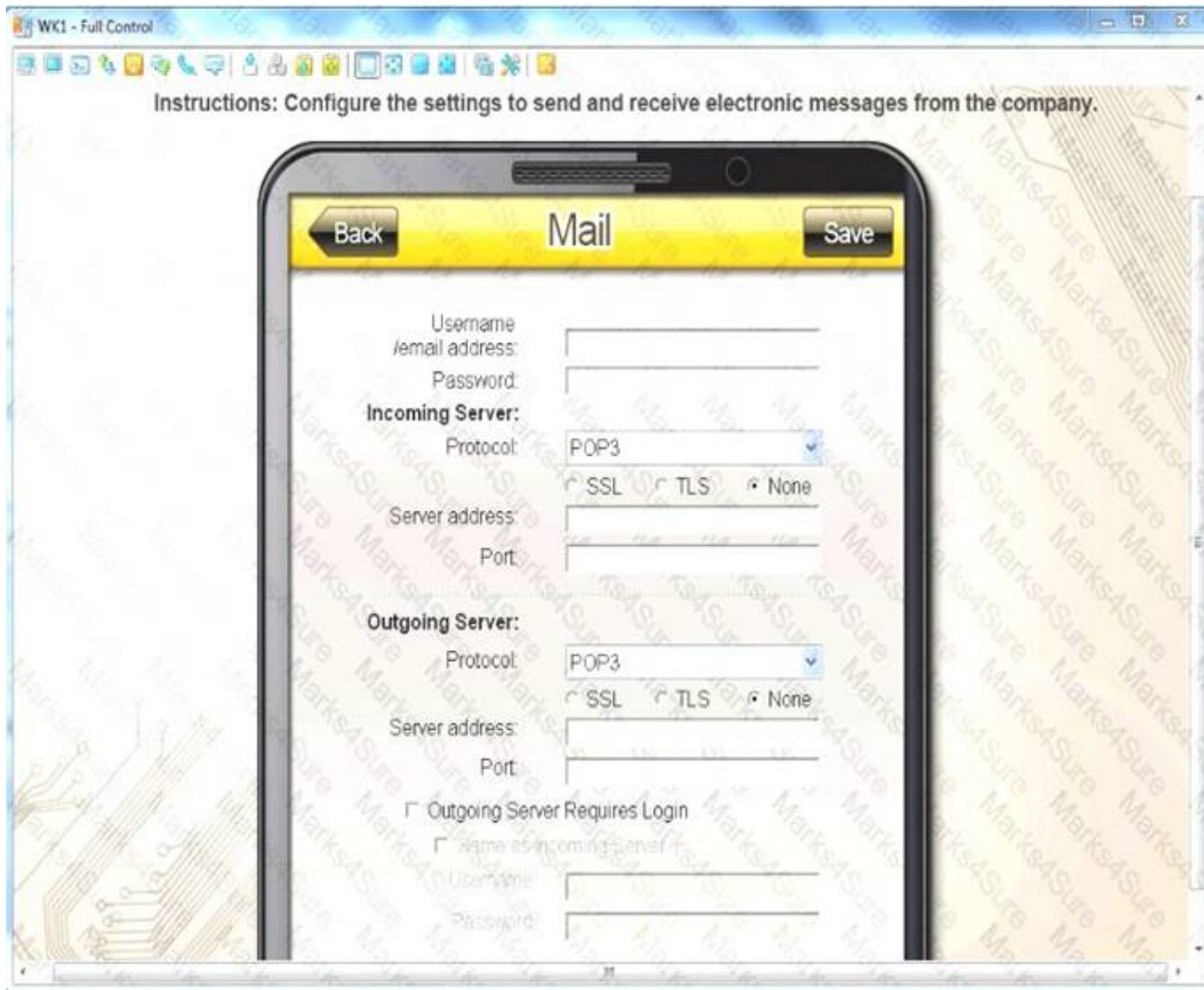
- A. Mastered
- B. Not Mastered

**Answer:** A

**Explanation:**

See explanation below





#### NEW QUESTION 20

A printer stops working in the billing department and cannot be repaired. A new printer has been ordered and a technician is tasked with allowing other users to print to the billing manager's printer until the new printer arrives. The manager's printer is currently used via USB connection, and there are no network jacks available for use.

Which of the following is the BEST way for the technician to allow access to the printer?

- A. Create a share on the manager's computer and give the users rights to the share.
- B. Install the printer on the users' desktops and point it to the IP address of the manager's computer.
- C. Purchase a wireless printer so the users can access the printer via network.

D. Provide flash drives to the users so they can transfer data to the manager's computer for printing.

**Answer:** C

#### NEW QUESTION 21

A technician receives a cellular from a manager. The technician is instructed to download a service manual directly from the Internet to a laptop. However, there is no WiFi signal or wired Ethernet. Which of the following would be the MOST appropriate connections for the technician to use?

- A. Hotspot
- B. NFC
- C. Bluetooth
- D. VPN

**Answer:** A

#### NEW QUESTION 26

A technician is determining the specifications for a desktop computer that will be used at trade shows all over the world. The computer will have the maximum amount of RAM. The CPU, GPU, and storage will be typical of a business workstation.

Which of the following system parameters is the MOST important for the technician to consider when choosing a power supply?

- A. input voltage
- B. Efficiency rating
- C. 12V rail amperage
- D. Number of SATA connectors

**Answer:** A

#### NEW QUESTION 29

The ability for new computers to be automatically connected to the network is provided by the:

- A. DHCP server
- B. DNS server
- C. proxy server
- D. TACACS server

**Answer:** A

#### NEW QUESTION 33

Which of the following devices would enable a VLAN user to communicate with a user in another VLAN?

- A. Router
- B. Access point
- C. Repeater
- D. Bridge

**Answer:** A

#### NEW QUESTION 34

A technician replaced a broken LED screen on a mobile computer. The operating system can be seen perfectly on screen, but the touch screen is non-responsive. Which of the following are the MOST probable root causes for the given failure? (Choose three.)

- A. The hardware replacement used is a non-touch-screen.
- B. The touch screen must be calibrated after a replacement.
- C. The digitizer cable is not seated properly on the motherboard.
- D. The new touch-screen drivers must be installed.
- E. The replacement part is dead-on-arrival.
- F. The LCD panel firmware must be updated.
- G. The grounding screws are not securely attached.

**Answer:** ACD

#### NEW QUESTION 38

A user reports being unable to browse the internet. A technician believes the cause of the issue is related to DNS. Which of the following should the technician perform NEXT?

- A. Test the theory attempting to browse to a website known IP address.
- B. Implement preventive measures by manually assigning a DNS server to the PC.
- C. Identify the problem by running the command `ipconfig / flushdns`.
- D. Document the finding in the organization local knowledge base.

**Answer:** C

#### NEW QUESTION 40

A technician is setting up a printer for a small office that does not have an RJ-45 jack. The users' computers are all in the same workgroup and are connected physically to the same network switch. The technician needs to make sure all users can print to the new printer through the switch. Which of the following should

the technician configure?

- A. Shared printer
- B. Print server
- C. Bluetooth printing
- D. Cloud printing

**Answer:** A

**NEW QUESTION 44**

Which of the following BEST describes the purpose of an IPv4 subnet mask?

- A. It defines where network and host bits exist
- B. It is used to find the default gateway on a LAN
- C. It gives users the ability to send and receive data.
- D. It allows the ability, when needed, to bridge subnets.

**Answer:** A

**NEW QUESTION 45**

Which of the following networking protocols would be BEST track packages through a sorting facility?

- A. RFID
- B. NFC
- C. Bluetooth
- D. Zigbee

**Answer:** D

**NEW QUESTION 49**

Which of the following is the MOST likely cause for a network PC to have an APIPA address?

- A. DHCP failure
- B. DNS resolution
- C. Duplicate IP address
- D. Cleared ARP cache

**Answer:** A

**NEW QUESTION 52**

Which of the following is the main purpose of the +5VSB output of a power supply?

- A. It allows peripherals to draw power when the machine is off
- B. It provides power to the audio and sound boards of the machine
- C. It acts as the main voltage supply to the motherboard and processor
- D. It powers all expansion cards and external device hubs

**Answer:** A

**NEW QUESTION 57**

A technician manually configured the wireless connection on the Chief Information Officer's (CIO's) new laptop so it can communicate with the network at the office. The CIO now is having trouble connecting to a guest WiFi hotspot. While the device has a gateway address and says it is connected, the CIO cannot access company email. Which of the following would BEST resolve the issue?

- A. Move the CIO's laptop closer to the access point to obtain a better RF signal
- B. Restart the wireless connection to obtain a self-assigned APIPA address
- C. Assign a different IP address to the device in conflict with the CIO's laptop
- D. Set the network connection to use DHCP instead of a static address
- E. Change the network's SSID to a mobile hotspot to access company email

**Answer:** D

**NEW QUESTION 58**

An end user reports a printer error that states "Replace filament". With which of the following types of printer is the end user MOST likely having problems?

- A. ink jet
- B. Laser
- C. 3-D
- D. Thermal

**Answer:** C

**NEW QUESTION 59**

Ann, a user, reports that after setting up a new WAP in her kitchen she is experiencing intermittent connectivity issues. Which of the following should a technician check FIRST?



- A. Channels
- B. Frequency
- C. Antenna power level
- D. SSID

**Answer:** A

#### NEW QUESTION 62

Which of the following charging and data ports has a non-directional connector?

- A. Micro-USB
- B. Mini-USB
- C. USB-A
- D. USB-C

**Answer:** D

#### NEW QUESTION 64

A user accidentally spills liquid on a laptop. The user wants the device to be fixed and would like to know how much it will cost. Which of the following steps should the technician take NEXT to verify if the device is repairable before committing to a price? (Choose two.)

- A. Remove the case and organize the parts.
- B. Document the screw locations.
- C. Search the Internet for repair tutorials.
- D. Consult colleagues for advice.
- E. Place the device in rice for a few days.

**Answer:** AB

#### NEW QUESTION 66

A shipping department is having problems with its thermal label printer. Two columns on the left are not appearing on all labels. Which of the following should a technician do FIRST?

- A. Verify the ribbon is correctly aligned to the label
- B. Run a label calibration
- C. Remove stuck labels from the print path
- D. Replace the print head

**Answer:** A

#### NEW QUESTION 70

A technician is replacing an older video card with a new high-end video card in a workstation. The installation was successful, the new card seated properly, and power is connected. However, upon booting, the computer now emits several beeps and will not boot, but shows no error messages. Which of the following is MOST likely the cause of this issue?

- A. The BIOS is out-of-date
- B. The is not enough PSU output
- C. There is an onboard RAM mismatch
- D. GPU is overlocked
- E. The firmware is out-of-date

**Answer:** B

#### NEW QUESTION 75

A user is no longer able to browse the Internet after returning from vacation. The user is able to log in and navigate to the local intranet, but not to any outside sites. A technician pings a well-known website by name but gets no reply. The technician then pings its IP address and gets a reply.

Which of the following commands will MOST likely resolve the issue?

- A. ipconfig /all
- B. ipconfig /flushdns
- C. ipconfig /release
- D. ipconfig /setclassid

**Answer:** B

#### NEW QUESTION 78

Following a recent malware infection, a user is unable to access network shares from the local server. A technician verifies the device is able to connect to the Internet and the hosted email provider off-site. The technician also confirms the local server is online. Additionally, a malware scan reports the user's computer is clean. Which of the following is the best NEXT step to troubleshoot the issue?

- A. Verify the DNS servers are configured properly on the device.
- B. Assign a static IP address on the wired network connection
- C. Run a speed test on the network to check for slow transfer speeds
- D. Confirm the network connection is not using a link-local address
- E. Replace the Ethernet cable as it is causing limited connectivity

**Answer:** C



**NEW QUESTION 83**

An administrator is configuring a virtualization workstation that will host several mission-critical VMs for the human resources department. The workstation will be required to support multiple users at once, and large amounts of data will be accessed daily. Which of the following components will BEST meet these requirements? (Select THREE).

- A. Quad-core CPU
- B. Solid-state drives
- C. Additional RAM
- D. Redundant PSUs
- E. RAID 0 array
- F. High-end GPU
- G. RAID 6 array

**Answer:** ACG

**NEW QUESTION 86**

A business owner wants to provide security to laptop users with the ability to charge their devices, access corporate LAN resources, and allow for a variety of their removable hardware.

Which of the following devices would BEST meet the owner's needs?

- A. Docking station
- B. Port replicator
- C. Thunderbolt
- D. USB hub

**Answer:** A

**NEW QUESTION 87**

Which of the following devices can utilize VLANs to secure networks?

- A. Switch
- B. Hub
- C. Repeater
- D. Bridge

**Answer:** A

**NEW QUESTION 88**

Which of the following devices performs forwarding decisions based on MAC addresses?

- A. Switch
- B. Router
- C. Hub
- D. Repeater

**Answer:** A

**NEW QUESTION 91**

Joe, a user, recently purchased a new multifunction printer and attempted to install it himself. He informed a technician that the printer is on his list of printers, but he is unable to print. The technician sees that the printer is listed as a generic printer under Devices and Printers. Which of the following should the technician do NEXT?

- A. Reboot the computer into safe mode and try to print a test page
- B. Download the correct drivers from the manufacturer's website and install them
- C. Unplug the USB cable from the printer and try another USB slot on the PC
- D. Set the printer as the default within the device properties

**Answer:** B

**NEW QUESTION 93**

Which of the following server types caches previously visited web pages for faster access in the future?

- A. Proxy server
- B. Web hosting server
- C. DNS server
- D. Branch cache server

**Answer:** D

**NEW QUESTION 98**

The touch-screen feature on a Windows device has stopped working. Which of the following should the technician check FIRST?

- A. Device Manager
- B. Performance Monitor
- C. System configuration
- D. Digitizer settings

**Answer:** D

**NEW QUESTION 103**

An associate is seeking advice on which device to purchase for a friend who is a business owner. The friend needs the ability to chat activity while keeping in contact with the home office.

Which of the following would be the BEST recommendation?

- A. Smart watch
- B. Fitness monitor
- C. Global positioning sensor
- D. Portable hotspot

**Answer:** A

**NEW QUESTION 105**

Which of the following technologies can be used for wireless payments?

- A. NFC
- B. Bluetooth
- C. IR
- D. LTE

**Answer:** A

**NEW QUESTION 108**

A corporation maintains an active social media presence by constantly uploading audio and video. The corporation also regularly hosts video conferences, but attendees are reporting buffering during their telecast.

Which of the following should the IT department do to improve the ability to attend video conferences without interruption?

- A. Enable QoS on network traffic, prioritizing telecast traffic over uploads.
- B. Upgrade video conference room equipment.
- C. Create a VLAN for all employees updating social media.
- D. Adjust the network intrusion device to allow video to flow without filtering.

**Answer:** A

**NEW QUESTION 109**

A technician is replacing the LCD panel in a laptop. Which of the following components is MOST likely to be damaged accidentally during the repair?

- A. Bezel
- B. Hinge
- C. Motherboard
- D. Digitizer

**Answer:** D

**NEW QUESTION 110**

The network administrator has changed the IP address of ComputerA from 192.168.1.20 to 10.10.10.20 and now jane, a user, is unable to connect to file shares on ComputerA from ComputerB using the computer name.

**INSTRUCTIONS**

Using the available tools, resolve the connectivity issues. After troubleshooting the issue, verify a successful connection.

If at any time you would like to bring back the initial state of the simulation? please click the Reset All button.

```
-----  
--- Welcome to Computer A -----  
-----  
  
c: > |
```

```

Reply from 10.10.10.10.30: bytes=32 time=13ms TTL=52
Reply from 10.10.10.10.30: bytes=32 time=13ms TTL=52

Ping statistics for 10.10.10.10:
    Packets: Sent = 4, Received = 4, Lost = 0 (0% loss),
Approximate round trip times in milli-seconds:
    Minimum = 13ms, Maximum = 13ms, Average = 13ms

c:\> ?
    % Invalid input detected, query help for valid commands.
c:\> help

    ipconfig
    nslookup
    ping
    tracert

    help

c:\> nslookup
    % Invalid input detected, query help for valid commands.
c:\> nslookup
    % Invalid input detected, query help for valid commands.
c:\> help

    ipconfig
    nslookup
    ping
    tracert
    help

c:\>

```

```

-----
--- Welcome to Computer B -----
-----

c:\>

```

```
-----  
  
c:\> ipconfig
```

```
Windows IP Configuration
```

```
Ethernet adapter Ethernet:
```

```
    Connection-specific DNS Suffix . . . . . : local.net  
    IPv4 Address . . . . . : 10.10.10.30  
    Subnet Mask . . . . . : 255.255.255.0  
    Default Gateway . . . . . : 10.10.10.1
```

```
c:\> ping 10.10.10.20
```

```
Pinging 10.10.10.20 with 32 bytes of data:  
Reply from 10.10.10.20: bytes=32 time=13ms TTL=52  
Reply from 10.10.10.20: bytes=32 time=13ms TTL=52  
Reply from 10.10.10.20: bytes=32 time=13ms TTL=52  
Reply from 10.10.10.20: bytes=32 time=13ms TTL=52
```

```
Ping statistics for 10.10.10.20:  
    Packets: Sent = 4, Received = 4, Loat = 0 (0% loss),  
Approximate round trip times in milli-seconds:  
    Minimum = 13ms, Maximum = 13ms, Average = 13ms
```

```
c:\> nslookup
```

```
* Invalid input detected, query help for valid commands.
```

```
c:\>
```

```
computerB
```

- A. Mastered
- B. Not Mastered

**Answer:** A

**Explanation:**

We need to flush the DNS to have the new IP address assigned to the same computer name. Use the ipconfig/flushdns command.

**NEW QUESTION 113**

A technician was asked to virtualize four existing PCs before decommissioning them. The resulting VMs are imported into a new VM workstation running a hypervisor on top of an OS Three of the VMs are running property, but the entire system locks up when trying to start the fourth VM. Which of the following should the technician have reviewed prior to creating the VMs to prevent this from occurring? (Select TWO)

- A. Hypervisor requirements
- B. Storage requirements
- C. Resource requirements
- D. Network requirements
- E. Backup requirements
- F. Security requirements

**Answer:** AF

**NEW QUESTION 115**

Which of the following Internet connection types often terminates at a switching center and then requires the use of a different media for the last mile to the

customer?

- A. ISDN
- B. DSL
- C. Fiber
- D. Cable

**Answer:** B

#### NEW QUESTION 116

The cloud model that represents a company maintaining some data in on-premise storage and some data in cloud-based storage is known as:

- A. hybrid
- B. private
- C. public
- D. community

**Answer:** A

#### NEW QUESTION 119

A workstation was just moved to a new work location without a surge protector. It was working the day before, but now the PC will not power on, the fans will not spin, and there are no signs of activity. Which of the following should the technician do FIRST?

- A. Check the power cable connection
- B. Check the voltage of the PSU with a tester
- C. Test for distended capacitors
- D. Check the voltage switch

**Answer:** A

#### NEW QUESTION 122

A technician is setting up RAID 5 on a server that needs to be highly available. Which of the following is the BEST option to use for the array?

- A. Hot spare drives
- B. Large capacity drives
- C. Hot swappable drives
- D. Solid state drives

**Answer:** D

#### NEW QUESTION 127

A technician is setting up a WiFi-enabled thermostat for a customer, but the customer is concerned about IoT devices getting hacked. Which of the following BEST address the customer's concerns? (Choose two.)

- A. Use the latest encryption standard on the wireless network and set a strong password.
- B. Enable two-factor authentication for the IoT device's cloud account, if it is available.
- C. Separate the IoT thermostat by segregating it in a DMZ network.
- D. Disable wireless access on the thermostat to make it unshakable.
- E. Upgrade the customer's router to the latest version to improve network security.
- F. Upgrade the customer's wireless network encryption to WPA.

**Answer:** AC

#### NEW QUESTION 132

A user purchases a wireless printer and sets it up in an office. The user installs all necessary software for the printer on the computer and connects the printer to the guest wireless network. However, when the user attempts to print to the printer, nothing happens. Which of the following will resolve the issue?

- A. Set up the user's computer to act as a print server.
- B. Configure the printer to use the Internet printing protocol.
- C. Ensure the user's computer is set to DHCP.
- D. Connect the printer to the company wireless network.

**Answer:** D

#### NEW QUESTION 137

A company has very strict rules regarding proprietary information leaving the premises. All computers host proprietary information. A technician is called to repair a computer on-site at the company's corporate office. The technician identifies the troubleshooting steps to create a plan of action. The technician determines the computer needs to be taken off-site for repair. Which of the following should the technician do NEXT?

- A. Check corporate policies for guidance.
- B. Get authorization from the manager.
- C. Delete proprietary data before leaving the building.
- D. Remove the HDD and send the device for repair.

**Answer:** A



**NEW QUESTION 139**

A technician is buying a PC that will host three VMs running at the same time with the current configuration. The technician believes there might be a need to run several additional VMs in the near future. Which of the following resources would be the MOST important to upgrade to allow for the additional VMs?

- A. CPU
- B. SSD
- C. NIC
- D. RAM

**Answer:** B

**NEW QUESTION 144**

Users report they have to select the output tray at the printer, even though the correct tray is selected in the print dialog. Which of the following should a technician perform FIRST to attempt to solve the problem?

- A. Check the user's account for the correct printing privileges.
- B. Reinstall the driver on the print server.
- C. Update the firmware on the commercial office printer.
- D. Run Windows Update on the affected computers.

**Answer:** B

**NEW QUESTION 146**

A technician is troubleshooting network connectivity issues after a new wireless router was installed in an office. Users who connect to the new router are unable to access LAN resources. Which of the following is the MOST likely cause of the issue?

- A. There are conflicting DHCP servers on the network
- B. There are conflicting ARP records
- C. There are conflicting gateways on the network
- D. There are conflicting IP protocols

**Answer:** A

**NEW QUESTION 150**

A user notices a laser printer is picking up multiple sheets of paper from one of its paper trays. The problem started last week and has gotten worse. Which of the following is MOST likely the cause of this problem?

- A. Separation pad
- B. Feed roller
- C. Registration roller
- D. Duplex assembly

**Answer:** A

**NEW QUESTION 153**

Which of the following connector types can be plugged into a device both right-side up and upside down?

- A. USB
- B. USB-C
- C. Mini-USB
- D. Micro-USB

**Answer:** B

**NEW QUESTION 157**

Joe, a user, reports that his new smart wearable device is not synchronizing to his mobile device. Both devices are powered on, but the mobile device fails to read the data from the wearable. Which of the following will MOST likely fix this issue?

- A. Pair the devices
- B. Set the SSID
- C. Update the smart wearable device firmware
- D. Enable NFC

**Answer:** A

**NEW QUESTION 160**

An administrator connects to the company's cloud account and builds a server that is hosted in the cloud. The server will be used as a confidential database server for one of the company's core applications. The administrator is responsible for patching and updating the server OS. Which of the following cloud models is this an example of?

- A. IaaS
- B. SaaS
- C. PaaS
- D. Public

**Answer:**

A

**NEW QUESTION 163**

A server needs a RAM upgrade, and a technician has been tasked with retrieving the RAM from storage and then installing it. Which of the following is the BEST RAM type for the technician to retrieve?

- A. SoDIMM
- B. DDR4
- C. Single channel
- D. ECC

**Answer:** B

**NEW QUESTION 168**

A technician needs to routinely run scripting commands in Linux but does not want to walk over the server room every time to perform the task. The technician also travels between buildings and has a Windows 10 laptop with 4GB of memory and a fully partitioned 500GB hard drive. Which of the following steps should the technician take to resolve this issue? (Choose two.)

- A. Increase the memory to 8GB.
- B. Install a Linux guest VM.
- C. Add another 500GB hard drive.
- D. Create a Linux LiveBoot CD.
- E. Repartition the hard drive.
- F. Install Linux on a new ext3 partition.

**Answer:** EF

**NEW QUESTION 173**

A technician is talking to end users about the specifications for an upgraded application server. The users of the application report that there cannot be any unscheduled downtime or data loss. Additionally, they would like the performance of the application to improve over the previous server in any way possible. The previous server running RAID 5. Which of the following RAID solutions should be implemented in this scenario?

- A. RAID 0
- B. RAID 2
- C. RAID 6
- D. RAID 10

**Answer:** D

**NEW QUESTION 174**

A company is concerned about security of sensitive data on a laptop a user frequently takes off-site Which of the following enables hardware encryption to secure user data?

- A. BIOS password
- B. Hibernation mode
- C. Trusted Platform Module
- D. Screen-saver lock

**Answer:** C

**NEW QUESTION 179**

A user reports being unable to browse the Internet. A technician believes the cause of the issue is related to DNS. Which of the following should the technician perform NEXT?

- A. Test the theory by attempting to browse to a website's known IP address.
- B. Implement preventive measures by manually assigning a DNS server to the PC.
- C. Identify the problem by running the command `ipconfig /flushdns`.
- D. Document the findings in the organization's local knowledge base.

**Answer:** A

**NEW QUESTION 181**

Which of the following peripherals would a company use to take inventory quickly and update price tags for products? (Choose two.)

- A. Barcode scanner
- B. Label printer
- C. Magnetic reader
- D. KVM switch
- E. NFC device
- F. Flatted scanner

**Answer:** AC

**NEW QUESTION 183**

A technician is setting up a new SOHO router for a home user. The user has a media server to be accessible from the Internet while the user is traveling.

Which of the following should the technician configure to allow access to the server from the Internet?

- A. Port forwarding
- B. NAT
- C. MAC filtering
- D. QoS

**Answer:** A

#### **NEW QUESTION 186**

An end user reports a Windows based PC just had a BSOD. The PC rebooted, and the user is now logged back in and working without any issues. Which of the following should a technician check FIRST to begin troubleshooting?

- A. Hard drive S.M.A.R.
- B. data
- C. Event Viewer
- D. Device Manager
- E. BIOS settings
- F. Performance Monitor

**Answer:** B

#### **NEW QUESTION 187**

A network administrator is troubleshooting a notebook that is not loading the local Windows 10 operating system. All the computers inside the company are installed using UEFI mode selected. The message on the screen shows a failed attempt to connect to a PXE server. When requested, the end user reported trying to improve the computer's speed by changing some BIOS configurations randomly. Which of the following should the network administrator check FIRST inside BIOS?

- A. C-states should be configured to 2
- B. Secure Boot should be enabled
- C. Wake-on-LAN should be unchecked
- D. The PXE server address should be set

**Answer:** D

#### **NEW QUESTION 191**

A customer reports being unable to access email on desktop workstation, however, other office application are working. A technician determines the computer has an IP address of 169.254.1.10. The technician learns from the customer that the computer recently was moved across the room. Which of the following troubleshooting steps should technician take NEXT?

- A. Check the default gateway
- B. Verify physical Ethernet connections
- C. Test web browser functional
- D. Restrict the computer
- E. Resolve the IP address conflict

**Answer:** E

#### **NEW QUESTION 195**

.....

## Thank You for Trying Our Product

\* 100% Pass or Money Back

All our products come with a 90-day Money Back Guarantee.

\* One year free update

You can enjoy free update one year. 24x7 online support.

\* Trusted by Millions

We currently serve more than 30,000,000 customers.

\* Shop Securely

All transactions are protected by VeriSign!

**100% Pass Your 220-1001 Exam with Our Prep Materials Via below:**

<https://www.certleader.com/220-1001-dumps.html>