

## 010-151 Dumps

### Cisco Certified Technician (CCT) for Data Center

<https://www.certleader.com/010-151-dumps.html>



**NEW QUESTION 1**

Which method does FCIP use to enable connectivity of geographically distributed Fibre Channel SANs over IP?

- A. routing
- B. tunneling
- C. handshaking
- D. transporting

**Answer:** B

**NEW QUESTION 2**

Which important feature on the front end is provided to the clients by multiple servers that access the same storage devices across the SAN?

- A. recovery
- B. redundancy
- C. resiliency
- D. security
- E. storage

**Answer:** B

**NEW QUESTION 3**

Which type of connection across the network does a SAN allow for multiple servers to access an unlimited amount of storage devices?

- A. any-to-many
- B. many-to-any
- C. any-to-any
- D. any-to-one
- E. one-to-any
- F. one-to-one

**Answer:** C

**NEW QUESTION 4**

Which two statements about the Ethernet media are true? (Choose two.)

- A. A twisted-pair cable system has each pair of wires twisted together to reduce electromagnetic interferenc
- B. Compared to multimode fiber, the single-mode fiber is designed for shorter distances with higher cos
- C. 40 Gigabit Ethernet twinax cables deploy Enhanced Quad Small Form Factor Pluggable (QSFP+) connector
- D. The twinax cables can be found in either a shielded twisted-pair or an unshielded twisted-pair variatio

**Answer:** AC

**NEW QUESTION 5**

What is the wire transmission speed for 100GBASE-ER4 Ethernet?

- A. 100 Mb/s
- B. 1 Gb/s
- C. 10 Gb/s
- D. 100 Gb/s

**Answer:** D

**NEW QUESTION 6**

Which two statements about PCIe are true? (Choose two.)

- A. The PCIe link is built around dedicated unidirectional couples of serial, point-to-point connections known as lane
- B. You can install a PCI Express x8 adapter into an x4 slo
- C. The PCIe standard is a bus-based system in which all the devices share the same bidirectional, 32-bit or 64-bit, parallel signal pat
- D. The PCIe 1.0 standard doubles the transfer rate compared to PCIe 2.0.
- E. A link that is composed of four lanes is called an x4 lin

**Answer:** AE

**NEW QUESTION 7**

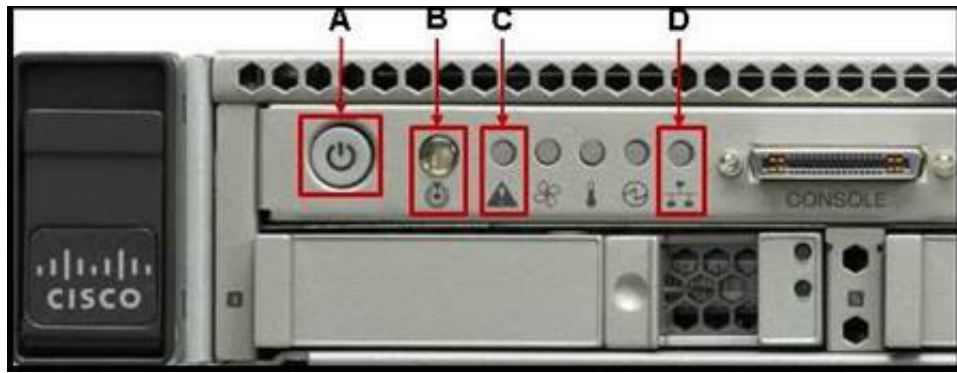
How do you find the serial number of a Cisco UCS 5108 Blade Server chassis?

- A. Use the Cisco UCS Admi
- B. Use the Cisco UCS Applicatio
- C. Use the Cisco UCS Assistan
- D. Use the Cisco UCS Manage

**Answer:** D

### NEW QUESTION 8

Refer to the exhibit.



Which statement correctly identifies the front panel LEDs on the Cisco UCS C220 Server?

- A. A is power button and power status LED; B is identification button and LED; C is system status LED; D is network link activity LED
- B. A is network link activity LED; B is system status LED; C is power button and power status LED; D is identification button and LED
- C. A is system status LED; B is network link activity LED; C is power button and power status LED; D is identification button and LED
- D. A is network link activity LED; B is system status LED; C is identification button and LED; D is power button and power status LED

**Answer: A**

### NEW QUESTION 9

Which processor option is supported in the Cisco UCS C420 M3 Server?

- A. up to two Intel Xeon E5-4600 series multicore processors
- B. up to two Intel Xeon E7-4800 series multicore processors
- C. up to four Intel Xeon E5-4600 series multicore processors
- D. two or four Intel Xeon E7-8800 series multicore processors

**Answer: C**

### NEW QUESTION 10

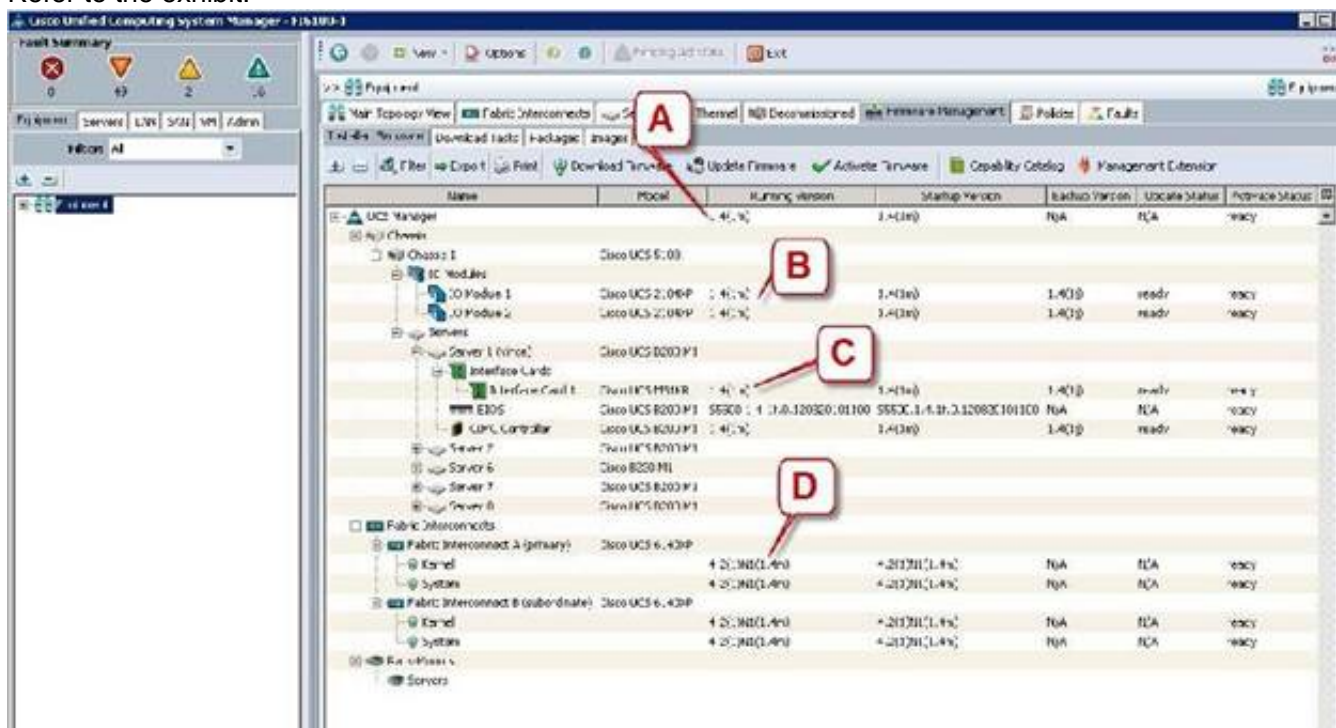
Which two major components does a Cisco Nexus 1000V Series Switch have? (Choose two.)

- A. Virtual Fiber Channel Module
- B. Virtual Ethernet Module
- C. Virtual Supervisor Module
- D. Virtual Memory Controller Module
- E. Virtual Network Module

**Answer: BC**

### NEW QUESTION 10

Refer to the exhibit.



Which call-out accurately shows the current running version of the Cisco UCS Manager management software?

- A. A - UCS Manager running version 1.4(1m)
- B. B - IO Module 1 running version 1.4(1m)
- C. C - Interface Card 1 running version 1.4(1m)
- D. D - Kernel running version 4.2(1)N(1.4m)

**Answer: A**

### NEW QUESTION 12

Which command-line interface mode is best described by this prompt?

UCS-switch-A (nxos)#

- A. maintenance mode
- B. EXEC mode
- C. local management mode
- D. global configuration mode
- E. Cisco IOS mode

**Answer: B**

#### NEW QUESTION 13

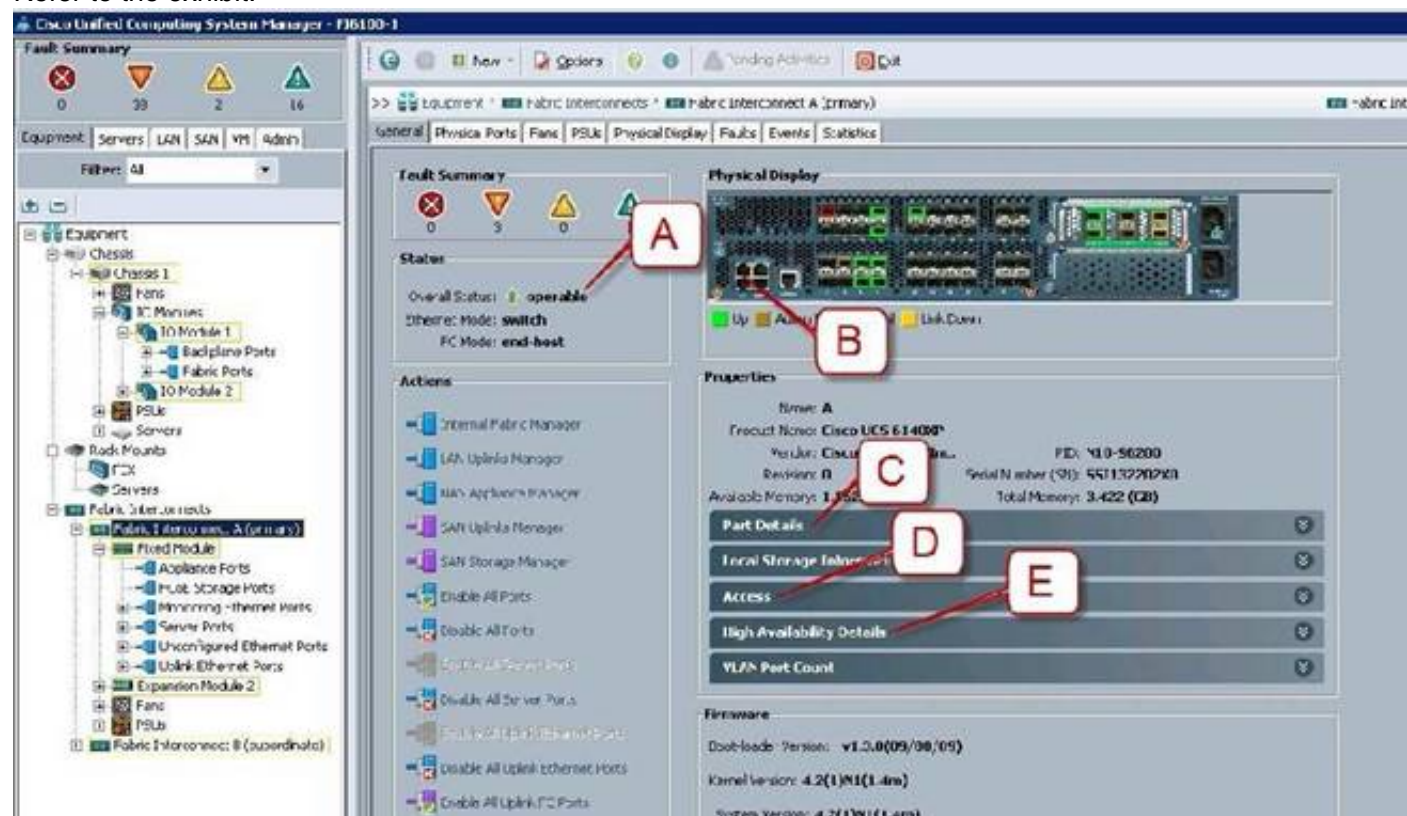
Which command can be used to exit to EXEC mode from this current mode?  
switch(config-if) #

- A. Ctrl-C
- B. Ctrl-L
- C. quit
- D. exit
- E. end

**Answer: E**

#### NEW QUESTION 15

Refer to the exhibit.



Where is the best place to see whether the system is ready for a Fabric Interconnect failover?

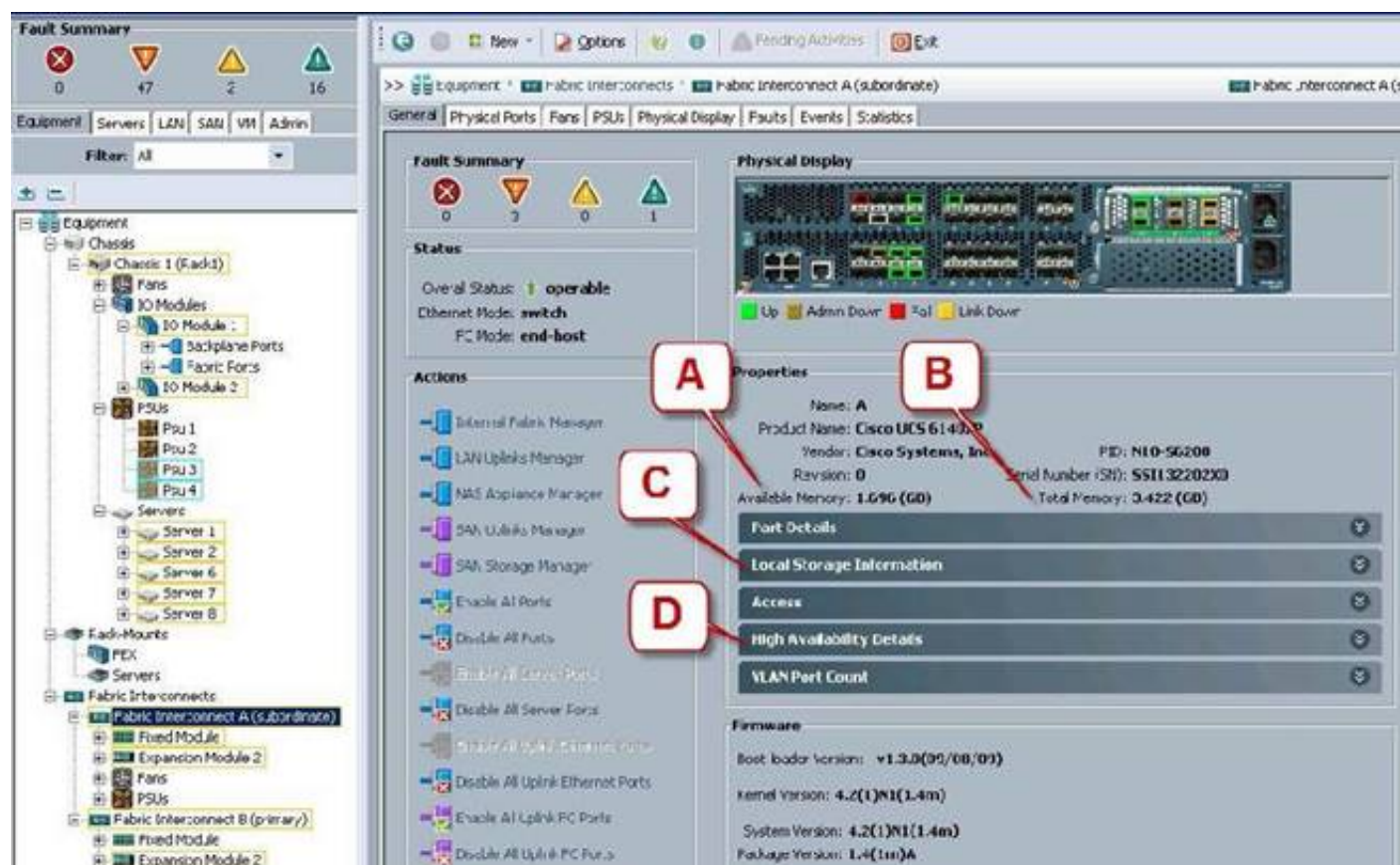
- A. A - Overall Status operable
- B. B - L1 Connection
- C. C - Part Details
- D. D - Access
- E. E - High Availability Details

**Answer: E**

#### NEW QUESTION 20

Refer to the exhibit.





Where is the best place to see bootflash free space?

- A. A - Available Memory
- B. B - Total Memory
- C. C - Local Storage Information
- D. D - High Availability Details

**Answer: C**

#### NEW QUESTION 23

Which command syntax is correct to reset the admin password when the switch is in the kickstart prompt "switch(boot) #"?

- A. exec -> admin-password <password>
- B. connect local-mgmt -> admin-password <password>
- C. configure terminal -> admin-password <password>
- D. connect nxos -> admin-password <password>
- E. admin-password <password>

**Answer: C**

#### NEW QUESTION 25

To do a password recovery on a Cisco NX-OS Switch, which option shows the correct syntax to display the bootflash contents at the switch(boot)#?

- A. display bootflash:
- B. show bootflash:
- C. dir bootflash:
- D. find bootflash:

**Answer: C**

#### NEW QUESTION 28

Which Cisco NX-OS command displays kernel uptime?

- A. show module
- B. show version
- C. show license
- D. show boot
- E. show interface

**Answer: B**

#### NEW QUESTION 33

On the Sensors page from the CIMC view, which four tabs are displayed to view further information? (Choose four.)

- A. Power Supply
- B. Fan
- C. Memory
- D. CPU
- E. LEDs
- F. Temperature

**Answer: ABEF**

**NEW QUESTION 36**

If the Overall Status for a Cisco UCS B-Series Blade Server indicates a failure in the Cisco UCS Manager, such as discovery-failed, which statement is true?

- A. The server shuts dow
- B. The server automatically reboots reboot in 3 minute
- C. The endpoints on that server cannot be upgrade
- D. The server is online, but the administrator cannot assign a service profile to that blad

**Answer:** C

**NEW QUESTION 39**

Which action should the administrator take before physically removing a blade server for maintenance or replacement?

- A. Force the server to shut dow
- B. Disassociate the service profil
- C. Decommission the serve
- D. Perform a graceful shutdown of the serve

**Answer:** C

**NEW QUESTION 43**

Which five things should the administrator verify after performing maintenance or replacing a blade server? (Choose five.)

- A. blade server status
- B. hard drive status
- C. host OS boot status
- D. CPU status
- E. mezzanine card status
- F. memory DIMM status
- G. fan and power status

**Answer:** ABDEF

**NEW QUESTION 47**

Which two statements about DIMM replacement in Cisco UCS Servers are true? (Choose two.)

- A. In blade servers, DIMMs can be installed in either 1, 2, 4, or 8 DIMMs per channe
- B. Rack-mount and blade servers have memory fault LEDs that indicate which DIMM requires attentio
- C. In servers that require pairs of DIMMs, the pairs must be identical (manufacturer, size, part #, and so on).
- D. If the memory in a server is not fully populated, you can install DIMMs in any open slo

**Answer:** AC

**NEW QUESTION 50**

Which three tools are necessary to console into a Cisco UCS C-Series Rack-Mount Server? (Choose three.)

- A. Cisco DB-9-to-RJ-45 console cable
- B. laptop
- C. monitor
- D. keyboard
- E. KVM dongle
- F. USB serial adapter

**Answer:** CDE

**NEW QUESTION 51**

After installation or replacement of a Cisco UCS C-Series Rack-Mount Server, the host does not boot.

Which four options should be verified? (Choose four.)

- A. Verify the power source to the equipmen
- B. Check for loose HDD cable
- C. Reseat the DIMMs, CPU, and PCI card
- D. Verify that power supplies are receiving powe
- E. Reseat the mezzanine card connecto
- F. Check the CPU sockets for bent pin
- G. Check the Cisco IMC for fan fault

**Answer:** ACDF

**NEW QUESTION 55**

Which three troubleshooting procedures do you perform when there is no power to a Cisco UCS B250 M2 Blade Server? (Choose three.)

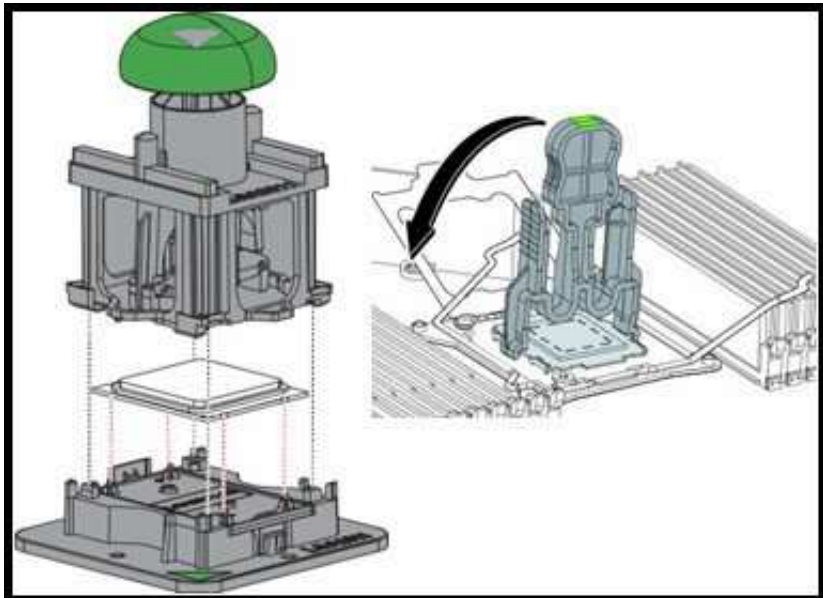
- A. Decommission and acknowledge the blad
- B. Check the back of the blade to ensure that there is no damage to the connection that goes into chassi
- C. Reseat the memory DIMM
- D. Check the CPU sockets for bent pin
- E. Reseat the blade in the same slot in the chassi

F. Move the blade to another slot in the chassi

**Answer:** BEF

#### NEW QUESTION 60

Refer to the exhibit.



This image shows a CPU Pick-and-Place tool and a CPU Socket Protective Cap Removal tool. Which types of Cisco UCS servers and Intel Xeon processors do these tools support?

- A. Cisco UCS B22 Blade Server, C22 Rack Server, and C24 Rack Server with Intel Xeon E5-2400 Series processors
- B. Cisco UCS B22 Blade Server, C22 Rack Server, and C24 Rack Server with Intel Xeon E5-2600 Series processors
- C. Cisco UCS B200 M3 Blade Server, B420 M3 Blade Server, C220 Rack Server, C240 Rack Server, and C420 Rack Server with Intel Xeon E5-2400 Series processors
- D. Cisco UCS B200 M3 Blade Server, B420 M3 Blade Server, C220 Rack Server, C240 Rack Server, and C420 Rack Server with Intel Xeon E5-2600 Series processors

**Answer:** D

#### NEW QUESTION 61

What is the maximum distance that the 40GBASE-LR4 Ethernet standard can span?

- A. 550 m
- B. 10 km
- C. 40 km
- D. 80 km

**Answer:** B

#### NEW QUESTION 66

Refer to the exhibit.



Which three options are features of the Cisco UCS 6248UP Fabric Interconnect front panel? (Choose three.)

- A. Console port
- B. FCoE port
- C. 10 Gb/s port
- D. Fan module
- E. USB port

**Answer:** ADE

#### NEW QUESTION 70

Which two Cisco Nexus switches provide the foundation of the Cisco Application Centric Infrastructure? (Choose two.)

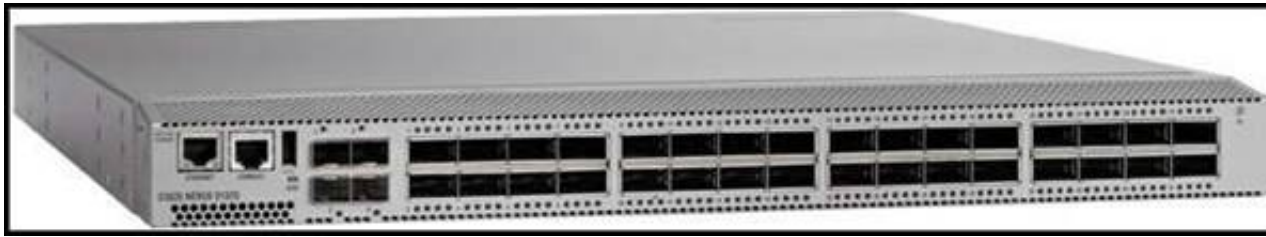
- A. Cisco Nexus 7718 switch
- B. Cisco Nexus 9508 switch
- C. Cisco Nexus 7710 switch
- D. Cisco Nexus 93128TX switch
- E. Cisco Nexus 6004 switch

**Answer:** BD

#### NEW QUESTION 71

Refer to the exhibit.





What is the name of this Cisco Nexus 3000 Series Switch?

- A. Cisco Nexus 3132Q
- B. Cisco Nexus 3172PQ
- C. Cisco Nexus 3524
- D. Cisco Nexus 3016

**Answer:** A

#### NEW QUESTION 75

Which three steps do you perform to troubleshoot when a rack server powers on with no video? (Choose three.)

- A. Check that the front I/O dongle is properly seated
- B. Check the front I/O cable connection to the motherboard
- C. Check for memory subsystem failure
- D. Verify the power source to equipment
- E. Reseat the DIMMs, CPU, and PCI card

**Answer:** ABC

#### NEW QUESTION 79

DRAG DROP

| Drag the password recovery procedures on a Cisco NX-OS switch from the left to the right and place them in order.   |        |
|---|--------|
| Log in to the switch using the new administrator password.  | Step 1 |
| Reset the network administrator password.   | Step 2 |
| Load the Cisco NX-OS system software image.   | Step 3 |
| Power-cycle the switch.   | Step 4 |
| Reset the new password to ensure that it is also the Simple Network Management Protocol (or SNMP) password.   | Step 5 |
| To enter the boot prompt mode, press the Ctrl-J key sequence from the console port session when the switch begins the Cisco NX-OS software boot sequence. | Step 6 |
| Save the configuration.   | Step 7 |
| Display the bootflash: contents to locate the Cisco NX-OS software image.   | Step 8 |

- A. Mastered
- B. Not Mastered

**Answer:** A

**Explanation:**

| Drag the password recovery procedures on a Cisco NX-OS switch from the left to the right and place them in order.   |   |
|---|---|
| Log in to the switch using the new administrator password.  | Power-cycle the switch.   |
| Reset the network administrator password.   | To enter the boot prompt mode, press the Ctrl-J key sequence from the console port session when the switch begins the Cisco NX-OS software boot sequence. |
| Load the Cisco NX-OS system software image.   | Reset the network administrator password.   |
| Power-cycle the switch.   | Display the bootflash: contents to locate the Cisco NX-OS software image.   |
| Reset the new password to ensure that it is also the Simple Network Management Protocol (or SNMP) password.   | Load the Cisco NX-OS system software image.   |
| To enter the boot prompt mode, press the Ctrl-J key sequence from the console port session when the switch begins the Cisco NX-OS software boot sequence. | Log in to the switch using the new administrator password.  |
| Save the configuration.   | Reset the new password to ensure that it is also the Simple Network Management Protocol (or SNMP) password.   |
| Display the bootflash: contents to locate the Cisco NX-OS software image.   | Save the configuration.   |

#### NEW QUESTION 81

DRAG DROP



Drag the cable or connector on the left to the correct interface on the right.

|                                 |  |
|---------------------------------|--|
| KVM dongle                      | Fabric Interconnect to Fabric Extender |
| straight-through Ethernet cable | console port                           |
| mini USB cable                  | MDS                                    |
| Twinax cable                    | C-Series Rack Server                   |
| Fiber Channel SFP               | from laptop to Management Port         |
| rolled RJ-45 cable              |  |
| SAS cable                       |  |

- A. Mastered
- B. Not Mastered

Answer: A

Explanation:

Drag the cable or connector on the left to the correct interface on the right.

|                                 |                                 |
|---------------------------------|---------------------------------|
| KVM dongle                      | Twinax cable                    |
| straight-through Ethernet cable | rolled RJ-45 cable              |
| mini USB cable                  | Fiber Channel SFP               |
| Twinax cable                    | KVM dongle                      |
| Fiber Channel SFP               | straight-through Ethernet cable |
| rolled RJ-45 cable              |                                 |
| SAS cable                       |                                 |

NEW QUESTION 84

.....

## Thank You for Trying Our Product

\* 100% Pass or Money Back

All our products come with a 90-day Money Back Guarantee.

\* One year free update

You can enjoy free update one year. 24x7 online support.

\* Trusted by Millions

We currently serve more than 30,000,000 customers.

\* Shop Securely

All transactions are protected by VeriSign!

**100% Pass Your 010-151 Exam with Our Prep Materials Via below:**

<https://www.certleader.com/010-151-dumps.html>