

# Microsoft

## Exam Questions 98-366

MTA Networking Fundamentals



**NEW QUESTION 1**

What is the default subnet mask for a Class C Internet network?

- A. 255.255.255.252
- B. 255.255.255.240
- C. 255.255.255.192
- D. 255.255.255.0

**Answer:** D

**NEW QUESTION 2**

What type of DNS record maps host names to addresses?

- A. Mail Exchanger (MX) DNS record
- B. Service (SRV) DNS record
- C. Host (A) DNS record
- D. Canonical (CNAME) DNS record

**Answer:** C

**NEW QUESTION 3**

How many bits are there in an Internet Protocol version 6 (IPv6) address?

- A. 32
- B. 64
- C. 128
- D. 256

**Answer:** C

**NEW QUESTION 4**

Which two features of a Windows Server 2008 R2 server should you install to use that server as a software router? (Choose two.)

- A. Network Policy and Access Services
- B. Routing and Remote Access Services
- C. Remote Administration
- D. DirectAccess

**Answer:** AB

**NEW QUESTION 5**

HOTSPOT

For each of the following statements, select Yes if the statement is true. Otherwise, select No. Each correct selection is worth one point.

**Answer Area**

	Yes	No
Dynamic Routing provides the ability to add networks automatically by learning them from other RIP routers.	<input type="radio"/>	<input type="radio"/>
Dynamic Routing provides the ability to automatically remove routes from the routing table when other RIP neighbors delete them.	<input type="radio"/>	<input type="radio"/>
Dynamic Routing provides the ability to select the best route based on routing metrics.	<input type="radio"/>	<input type="radio"/>

- A. Mastered
- B. Not Mastered

**Answer:** A

**Explanation:**

**Answer Area**

	Yes	No
Dynamic Routing provides the ability to add networks automatically by learning them from other RIP routers.	<input checked="" type="radio"/>	<input type="radio"/>
Dynamic Routing provides the ability to automatically remove routes from the routing table when other RIP neighbors delete them.	<input checked="" type="radio"/>	<input type="radio"/>
Dynamic Routing provides the ability to select the best route based on routing metrics.	<input checked="" type="radio"/>	<input type="radio"/>

**NEW QUESTION 6**

The service that resolves fully qualified domain names (FQDN) to IP addresses is:

- A. Windows Internet Name Service (WINS).
- B. Domain Name Service (DNS).
- C. Internet Service Provider (ISP).
- D. Address Resolution Protocol (ARP).

**Answer:** B

**NEW QUESTION 7**

HOTSPOT

For each of the following statements, select Yes if the statement is true. Otherwise, select No. Each correct selection is worth one point.

**Answer Area**

	Yes	No
An IPv4 address consists of 64 bits.	<input type="radio"/>	<input type="radio"/>
It is standard practice to divide the binary bits of an IPv4 address into 8-bit fields named octets.	<input type="radio"/>	<input type="radio"/>
The value of any IPv4 octet can be from 0 to 256.	<input type="radio"/>	<input type="radio"/>

- A. Mastered
- B. Not Mastered

**Answer:** A

**Explanation:**

## Answer Area

	Yes	No
An IPv4 address consists of 64 bits.	<input type="radio"/>	<input checked="" type="radio"/>
It is standard practice to divide the binary bits of an IPv4 address into 8-bit fields named octets.	<input checked="" type="radio"/>	<input type="radio"/>
The value of any IPv4 octet can be from 0 to 256.	<input type="radio"/>	<input checked="" type="radio"/>

### NEW QUESTION 8

You are setting up a network computer game.

You need to open up ports on your firewall so your friends can join the network. Which command displays the ports that your computer is listening for?

- A. nslookup
- B. nbtstat
- C. ping
- D. netstat

Answer: A

### NEW QUESTION 9

What happens when an 802.11b node starts broadcasting within the range of an 802.11g access point?

- A. The access point will transmit, but the node will be unable to receive.
- B. A connection will be established,
- C. Both the node and the access point will be unable to transmit.
- D. The node will transmit, but the access point will be unable to receive.

Answer: B

### NEW QUESTION 10

HOTSPOT

For each of the following statements, select Yes if the statement is true. Otherwise, select No. Each correct selection is worth one point.

#### Answer Area

	Yes	No
A switch sends unicast packets to one destination port only.	<input type="radio"/>	<input type="radio"/>
A switch floods ports if it does not know where to send a packet.	<input type="radio"/>	<input type="radio"/>
A switch sends broadcast packets to the uplink port only.	<input type="radio"/>	<input type="radio"/>

- A. Mastered
- B. Not Mastered

Answer: A

Explanation:

Answer Area

	Yes	No
A switch sends unicast packets to one destination port only.	<input checked="" type="radio"/>	<input type="radio"/>
A switch floods ports if it does not know where to send a packet.	<input checked="" type="radio"/>	<input type="radio"/>
A switch sends broadcast packets to the uplink port only.	<input type="radio"/>	<input checked="" type="radio"/>

NEW QUESTION 10

Which Microsoft network service can you use to establish a connection to a corporate LAN without any user action?

- A. VPN
- B. Remote Desktop
- C. DirectAccess
- D. Nap

Answer: A

NEW QUESTION 13

DRAG DROP

Match the TCP ports to the corresponding service.

To answer, drag the appropriate port number from the column on the left to its service on the right. Each port number may be used once, more than once, or not at all. Each correct match is worth one point.

Ports	Answer Area
80	SMTP Port
53	FTP Port
25	HTTPS Port
21	
443	

- A. Mastered
- B. Not Mastered

Answer: A

Explanation:

Ports	Answer Area
80	SMTP 25
53	FTP 21
25	HTTPS 443
21	
443	

NEW QUESTION 16

DRAG DROP

Match the IPv4 address type to the corresponding definition.

To answer, drag the appropriate definition from the column on the left to the address type on the right. Each definition may be used once, more than once, or not at all. Each correct match is worth one point.

Definitions	Answer Area
assigned to a single network interface located on a specific subnet on the network and used for one-to-one communications	Multicast Definition
assigned to the variable portion of an IPv4 address that is used to identify a network node's interface on a subnet	Broadcast Definition
assigned to one or more network interfaces located on various subnets on the network and used for one-to-many communications	Unicast Definition
assigned to all network interface located on a subnet on the network and used for one-to-everyone-on-a-subnet communications	

- A. Mastered
- B. Not Mastered

Answer: A

Explanation:



Definitions	Answer Area
assigned to a single network interface located on a specific subnet on the network and used for one-to-one communications	Multicast assigned to one or more network interfaces located on various subnets on the network and used for one-to-many communications
assigned to the variable portion of an IPv4 address that is used to identify a network node's interface on a subnet	Broadcast assigned to all network interface located on a subnet on the network and used for one-to-everyone-on-a-subnet communications
assigned to one or more network interfaces located on various subnets on the network and used for one-to-many communications	Unicast assigned to a single network interface located on a specific subnet on the network and used for one-to-one communications
assigned to all network interface located on a subnet on the network and used for one-to-everyone-on-a-subnet communications	

#### NEW QUESTION 20

What happens when an 802.11a node broadcasts within the range of an 802.11g access point?

- A. The access point transmits, but the node is unable to receive.
- B. A connection occurs.
- C. Both the node and the access point are unable to transmit.
- D. The node transmits, but the access point is unable to receive.

Answer: C

#### NEW QUESTION 21

This question requires that you evaluate the underlined text to determine if it is correct. In a wireless network that requires an SSL certificate, WEP handles the SSL certificate.

Select the correct answer if the underlined text does not make the statement correct. Select 'No change is needed' if the underlined text makes the statement correct.

- A. 802.1X
- B. WPA2-PSK
- C. WPA-PSK
- D. No change is needed

Answer: A

#### NEW QUESTION 26

This question requires that you evaluate the underlined text to determine if it is correct. Dynamic routing is fault tolerant.

Select the correct answer if the underlined text does not make the statement correct. Select 'No change is needed' if the underlined text makes the statement correct.

- A. Static routing
- B. Default route
- C. Least cost routing
- D. No change is needed

Answer: D

#### NEW QUESTION 30

DRAG DROP

Match each protocol to its description.

To answer, drag the appropriate protocol from the column on the left to its description on the right. Each protocol may be used once, more than once, or not at all. Each correct match is worth one point.

Protocols

TCP

ICMP

ARP

UDP

IGMP

Answer Area

connectionless, message-based protocol with best-effort service

Protocol

connection-oriented protocol with guaranteed service

Protocol

resolves IP addresses to MAC addresses

Protocol

- A. Mastered
- B. Not Mastered

Answer: A

Explanation:

Protocols

TCP

ICMP

ARP

UDP

IGMP

Answer Area

connectionless, message-based protocol with best-effort service

UDP

connection-oriented protocol with guaranteed service

TCP

resolves IP addresses to MAC addresses

ARP

NEW QUESTION 31

If a router cannot determine the next hop for a packet, the router will:

- A. Forward the packet to the default route.
- B. Send the packet back to the packet's source.
- C. Broadcast the packet.
- D. Store the packet in the memory buffer.

Answer: A

NEW QUESTION 32

Which of the following uses a tunneling protocol?



- A. Internet
- B. VPN
- C. Extranet
- D. VLAN

**Answer:** :B

**NEW QUESTION 33**

The default port used for telnet is:

- A. 23
- B. 25
- C. 80
- D. 8080

**Answer:** A

**NEW QUESTION 35**

This question requires that you evaluate the underlined text to determine if it is correct. WEP wireless encryption is the most susceptible to interception and decryption.

Select the correct answer if the underlined text does not make the statement correct. Select 'No change is needed' if the underlined text makes the statement correct

- A. WPA-AES
- B. WPA2
- C. WPA-PSK
- D. No change is needed

**Answer:** D

**NEW QUESTION 39**

DRAG DROP

Match the VPN connection type to the corresponding definition.

To answer, drag the appropriate VPN term from the column on the left to its definition on the right. Each term may be used once, more than once, or not at all. Each correct match is worth one point.

Terms	Answer Area
Point-to-Point Protocol	allows a remote user to connect to a private network from anywhere on the Internet
SSL VPN	securely connects two portions of a private network or two private networks
Layer 2 Tunneling Protocol	creates an unencrypted connection between two network devices
Site-to-Site VPN	

- A. Mastered
- B. Not Mastered

**Answer:** A

**Explanation:**

visit - <https://www.surepassexam.com>

## Answer Area

	Yes	No
Quality of Service (QoS) allows you to define the priority traffic on the network.	<input checked="" type="radio"/>	<input type="radio"/>
Quality of Service (QoS) allows you to control bandwidth.	<input checked="" type="radio"/>	<input type="radio"/>
Quality of Service (QoS) allows you to assign protocols dynamically.	<input type="radio"/>	<input checked="" type="radio"/>

### NEW QUESTION 55

In which physical network topology is each computer connected to a central point?

- A. Star
- B. Mesh
- C. Ring
- D. Bus

**Answer:** A

### NEW QUESTION 58

Internet Key Exchange (IKE) is responsible for which two functions? (Choose two.)

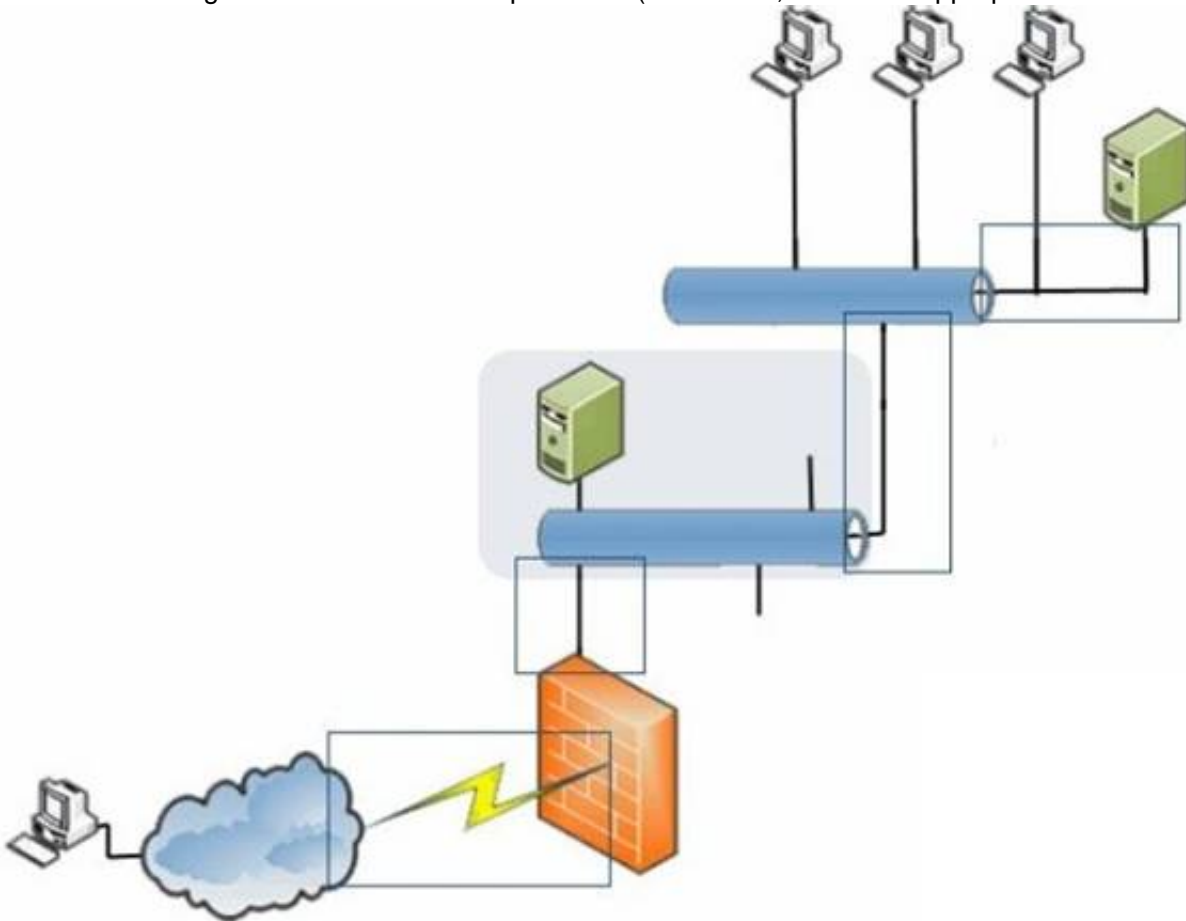
- A. Establishing network speed parameters
- B. Verifying the client's patch level
- C. Negotiating algorithms to use
- D. Exchanging key information

**Answer:** AB

### NEW QUESTION 59

HOTSPOT

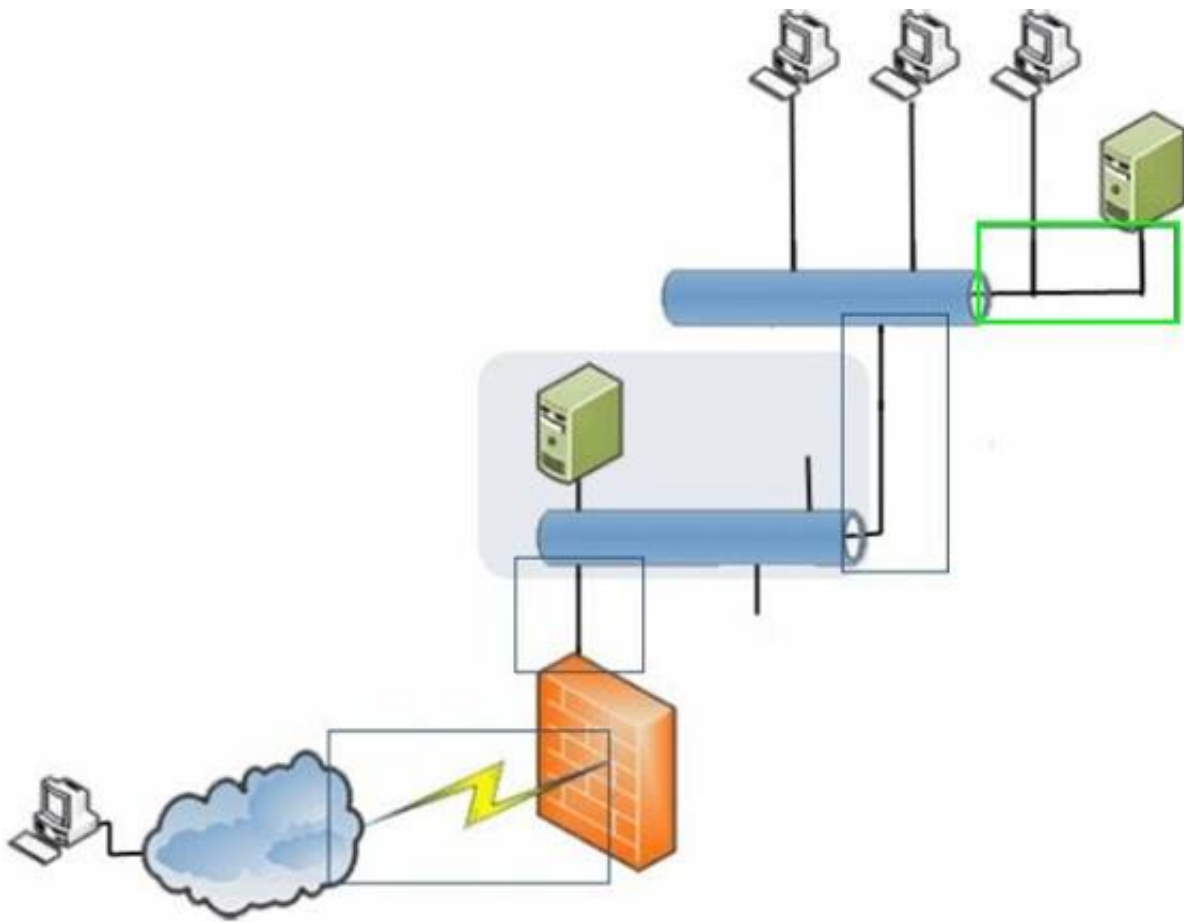
Where in the diagram is a T3 connection possible? (To answer, select the appropriate connection in the diagram in the answer area.)



- A. Mastered
- B. Not Mastered

**Answer:** A

**Explanation:**



#### NEW QUESTION 62

To which IP configuration does the CIDR notation 192.168.1.1/25 refer?

- A. 192.168.1.1 255.255.255.64
- B. 192.168.1.1 255.255.255.1
- C. 192.168.1.1 255.255.255.32
- D. 192.168.1.1 255.255.255.256
- E. 192.168.1.1 255.255.255.128

**Answer: E**

#### NEW QUESTION 64

The command-line tool used to list a host's active incoming connections is:

- A. NETSTAT
- B. IPCONFIG
- C. NSLOOKUP
- D. PING

**Answer: A**

#### NEW QUESTION 66

A user reports that she cannot connect to network resources from a computer on the company network. The user was able to connect to the network resources yesterday.

You verify that the user's computer is properly physically connected to the network. You discover that the computer's IP address is 169.254.48.97.

You need to restore access to network resources. What should you do next?

- A. Flush the cache on the DNS server.
- B. Reset the user's password on the server.
- C. Check your router's current routing tables.
- D. Verify that the DHCP service is available.

**Answer: D**

#### NEW QUESTION 69

Attenuation in a wireless network signal is a result of:

- A. Number of wireless nodes connected.
- B. Distance from the access point.
- C. Interference from cellular phones.
- D. Encryption of the signal.

**Answer: B**

#### NEW QUESTION 74

A service that resolves NetBIOS names to IP addresses is:

- A. Domain Name Service (DNS).
- B. Internet Service Provider (ISP).

- C. Address Resolution Protocol (ARP).
- D. Windows Internet Name Service (WINS).

**Answer:** D

**NEW QUESTION 75**

A characteristic of the mesh topology is that it:

- A. Uses a central hub.
- B. Cannot use wired connections.
- C. Uses redundant paths.
- D. Cannot use wireless connections.

**Answer:** C

**NEW QUESTION 79**

Which technology provides the highest bit rate?

- A. T1
- B. E1
- C. DS3
- D. ISDN

**Answer:** C

**NEW QUESTION 82**

A network device that associates a Media Access Control (MAC) address with a port is a:

- A. DSL modem
- B. Hub
- C. Router
- D. Switch

**Answer:** D

**NEW QUESTION 87**

Which of the following services masks internal IP addresses from outside the network?

- A. DHCP
- B. WINS
- C. NAT
- D. DNS

**Answer:** C

**NEW QUESTION 88**

The maximum throughput of an 802.11g network is:

- A. 2.4 GHz.
- B. 54 GHz.
- C. 2.4 Mbps
- D. 54 Mbps.

**Answer:** D

**NEW QUESTION 89**

HOTSPOT

For each of the following statements, select Yes if the statement is true. Otherwise, select No. Each correct selection is worth one point.

**Answer Area**

	Yes	No
IPv6 addresses are 64-bit in length.	<input type="radio"/>	<input type="radio"/>
IPv6 addresses are divided into 8-bit blocks.	<input type="radio"/>	<input type="radio"/>
IPv6 addresses are represented by dotted-decimal notation.	<input type="radio"/>	<input type="radio"/>

- A. Mastered
- B. Not Mastered

**Answer:** A

**Explanation:**

**Answer Area**

Yes      No

IPv6 addresses are 64-bit in length.

☐☒

IPv6 addresses are divided into 8-bit blocks.

☐☒

IPv6 addresses are represented by dotted-decimal notation.

☐☒

#### NEW QUESTION 91

The protocol that maps IP addresses to a Media Access Control (MAC) address is:

- A. Internet Message Access Protocol (IMAP).
- B. Dynamic Host Configuration Protocol (DHCP).
- C. Routing Information Protocol (RIP).
- D. User Datagram Protocol (UDP).
- E. Address Resolution Protocol (ARP).

**Answer:** E

#### NEW QUESTION 92

Which of the following are features of DHCP? (Choose two.)

- A. IP address resolution to canonical names
- B. Secure shell connections
- C. Address reservation
- D. Network file transfer
- E. IP address exclusion

**Answer:** CE

#### NEW QUESTION 95

A VPN is a/an:

- A. Encrypted connection across the Internet.
- B. Virtual network within your local area network (LAN).
- C. Communication tunnel between VLANs.
- D. Personal network for your use only.

**Answer:** A

#### NEW QUESTION 100

A computer that has an IP address of 169.254.0.1 cannot access the network. Which of the following services should you confirm is available?

- A. WINS
- B. DNS
- C. DHCP
- D. TFTP

**Answer:** C

#### NEW QUESTION 102

To directly connect the Ethernet network interface cards (NICs) of two computers, you should use a:

- A. Crossover cable
- B. Straight cable
- C. Rollover cable
- D. Coaxial cable

**Answer:** A

#### NEW QUESTION 106

A node within a local area network (LAN) must have a network interface device and a:

- A. Network account
- B. Table of all network nodes



- C. Host address
- D. Resource to share

Answer: C

NEW QUESTION 111

Which of these is a public address space?

- A. 192.168.0.0/16
- B. 197.16.0.0/12
- C. 10.0.0.0/8
- D. 172.16.0.0/12

Answer: D

NEW QUESTION 115

HOTSPOT

For each of the following statements, select Yes if the statement is true. Otherwise, select No. Each correct selection is worth one point.

Answer Area

	Yes	No
The TCP/IP model has four layers, which correspond with the OSI model's seven layers.	<input type="radio"/>	<input type="radio"/>
The TCP/IP application layer corresponds with the top four layers of the OSI model.	<input type="radio"/>	<input type="radio"/>
The TCP/IP transport and Internet layers correspond with layers 3 and 4 of the OSI model.	<input type="radio"/>	<input type="radio"/>

- A. Mastered
- B. Not Mastered

Answer: A

Explanation:

Answer Area

	Yes	No
The TCP/IP model has four layers, which correspond with the OSI model's seven layers.	<input checked="" type="radio"/>	<input type="radio"/>
The TCP/IP application layer corresponds with the top four layers of the OSI model.	<input type="radio"/>	<input checked="" type="radio"/>
The TCP/IP transport and Internet layers correspond with layers 3 and 4 of the OSI model.	<input checked="" type="radio"/>	<input type="radio"/>

NEW QUESTION 120

You run the ipconfig command. The output is shown in the following image:

```
Windows IP Configuration

Wireless LAN adapter Wireless Network Connection 3:

    Media State . . . . . : Media disconnected
    Connection-specific DNS Suffix  . :

Wireless LAN adapter Wireless Network Connection:

    Connection-specific DNS Suffix  . :
    IPv6 Address. . . . . : 2602:304:aecf:a929:cce2:4be1:be2a:260
    Temporary IPv6 Address. . . . . : 2602:304:aecf:a929:f09e:893:6519:6a2
    Link-local IPv6 Address . . . . . : fe80::cce2:4be1:be2a:260%17
    IPv4 Address. . . . . : 192.168.1.65
    Subnet Mask . . . . . : 255.255.255.0
    Default Gateway . . . . . :
```

From these settings, you can tell that the computer:

- A. Will have limited Internet access
- B. Will have full Internet access
- C. Will not be able to access the Internet
- D. Will not be able to access the local network

Answer: A

NEW QUESTION 123

You are helping a friend set up a public-facing web server for a home office. Your friend wants to protect the internal network from intrusion. What should you do?

- A. Set the web server in a perimeter network.
- B. Set the web server to block access on ports 80 and 443.
- C. Configure the firewall to block access on ports 80 and 443.
- D. Set the IP address of the web server to be within the LAN.

Answer: A

NEW QUESTION 125

DRAG DROP

Match the networking topologies to their corresponding characteristics. To answer, drag the appropriate topology from the column on the left to its characteristic on the right. Each topology may be used once, more than once, or not at all. Each correct match is worth one point.

Topologies	Answer Area	
Star	Each computer is connected by a single cable.	Topology
Mesh	Each workstation acts as a repeater.	Topology
Ring	Each computer is connected to every other computer.	Topology
	There is a central connectivity device.	Topology
	The number of connections equals the total number of computers minus one.	Topology
	Each node is connected to exactly two other nodes.	Topology

- A. Mastered
- B. Not Mastered

Answer: A

Explanation:

Topologies	Answer Area	
Star	Each computer is connected by a single cable.	Star
Mesh	Each workstation acts as a repeater.	Ring
Ring	Each computer is connected to every other computer.	Mesh
	There is a central connectivity device.	Star
	The number of connections equals the total number of computers minus one.	Mesh
	Each node is connected to exactly two other nodes.	Ring

NEW QUESTION 130

What is an example of a Layer 3 device that connects multiple computers and networks?

- A. Packet
- B. Repeater
- C. Switch
- D. Router

Answer: A

NEW QUESTION 133

This question requires that you evaluate the underlined text to determine if it is correct. According to the OSI model, encryption takes place on the transport layer. Select the correct answer if the underlined text does not make the statement correct. Select 'No change is needed' if the underlined text makes the statement correct.

- A. Presentation
- B. Network
- C. Application
- D. No change is needed

Answer: A

NEW QUESTION 135

This question requires that you evaluate the underlined text to determine if it is correct. Plain old telephone service (POTS), most ISDN lines, and switched T1 lines are all examples of Message Switching. Select the correct answer if the underlined text does not make the statement correct. Select 'No change is needed' if the underlined text makes the statement correct.

- A. Circuit Switching
- B. Packet Switching
- C. FDDI Switching
- D. No change is needed

Answer: A

NEW QUESTION 138

For which two reasons should you use IPsec between computers? (Choose two.)

- A. Data compression
- B. Data integrity
- C. Data redundancy
- D. Data confidentiality

**Answer:** AB

**NEW QUESTION 139**

What are two characteristics of a mesh network topology? (Choose two.)

- A. It is fault tolerant because of redundant connections.
- B. Every node connects to every other node on the network.
- C. It works best for networks with a large number of nodes.
- D. It requires less cabling than either a star or ring topology.

**Answer:** AC

**NEW QUESTION 143**

HOTSPOT

For each of the following statements, select Yes if the statement is true. Otherwise, select No. Each correct selection is worth one point.

**Answer Area**

	Yes	No
The tracert command displays router addresses that are traversed between a source and a destination.	<input type="radio"/>	<input type="radio"/>
The tracert command determines packet loss between a source and a destination.	<input type="radio"/>	<input type="radio"/>
The tracert command can display a list of routers being used for all active connections.	<input type="radio"/>	<input type="radio"/>

- A. Mastered
- B. Not Mastered

**Answer:** A

**Explanation:**



## Answer Area

Yes

No

The tracert comm and displays router addresses that are traversed between a source and a destination.

☒
☐

The tracert comm and determines packet loss between a source and a destination.

☐
☒

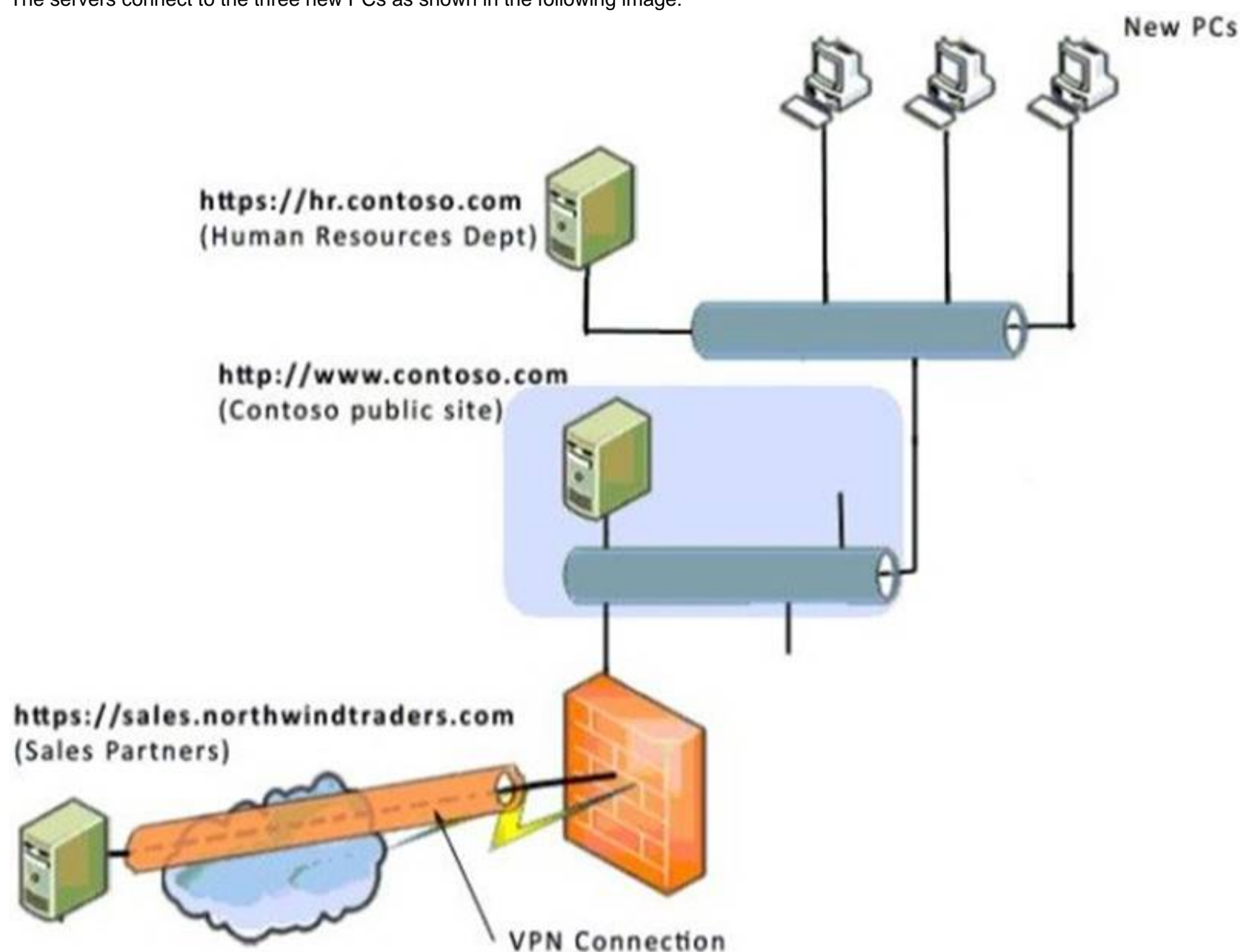
The tracert comm and can display a list of routers being used for all active connections.

☐
☒

### NEW QUESTION 146

#### HOTSPOT

You are an intern for Contoso Ltd. Your supervisor asks you to configure the security zones for three new PCs so that they are able to connect to two web servers. The servers connect to the three new PCs as shown in the following image:



Use the drop-down menus to select the answer choice that completes each statement. Each correct selection is worth one point.

## Answer Area

The appropriate type of security zone for <https://sales.northwindtraders.com> is **[answer choice]**

Restricted Sites.  
Local Intranet.  
Trusted Sites.

The appropriate type of security zone for <https://hr.contoso.com> is **[answer choice]**

Restricted Sites.  
Local Intranet.  
Trusted Sites.

- A. Mastered
- B. Not Mastered

Answer: A

Explanation:

## Answer Area

The appropriate type of security zone for <https://sales.northwindtraders.com> is **[answer choice]**

Restricted Sites.  
Local Intranet.  
Trusted Sites.

The appropriate type of security zone for <https://hr.contoso.com> is **[answer choice]**

Restricted Sites.  
Local Intranet.  
Trusted Sites.

### NEW QUESTION 150

You are home for vacation, and a family member wants your help to purchase and install network cable for a home office. The cable needs to support at least 300 Mbps. What is the least expensive option that meets this requirement?

- A. Cat3
- B. CAT5
- C. Cat5e
- D. Cat6

Answer: C

### NEW QUESTION 154

One purpose of a perimeter network is to:

- A. Make resources available to the intranet.
- B. Link campus area networks (CANs).
- C. Link local area networks (LANs).
- D. Make resources available to the Internet.

Answer: D

### NEW QUESTION 159



What is the minimum cabling requirement for a 100BaseTX network?

- A. Category 3 UTP cable
- B. Category 5 UTP cable
- C. Category 6 UTP cable
- D. Multimode fiber cable

Answer: A

**NEW QUESTION 163**

HOTSPOT

For each of the following statements, select Yes if the statement is true. Otherwise, select No. Each correct selection is worth one point.

**Answer Area**

	Yes	No
You use a perimeter network to grant internal clients access to external resources.	<input type="radio"/>	<input type="radio"/>
A LAN has no access to the perimeter network.	<input type="radio"/>	<input type="radio"/>
A perimeter network typically contains servers that require Internet access, such as web or email servers.	<input type="radio"/>	<input type="radio"/>

- A. Mastered
- B. Not Mastered

Answer: A

Explanation:

**Answer Area**

	Yes	No
You use a perimeter network to grant internal clients access to external resources.	<input type="radio"/>	<input checked="" type="radio"/>
A LAN has no access to the perimeter network.	<input type="radio"/>	<input checked="" type="radio"/>
A perimeter network typically contains servers that require Internet access, such as web or email servers.	<input checked="" type="radio"/>	<input type="radio"/>

**NEW QUESTION 166**

Which of these factors has the biggest impact on data transmission speed in a wireless network?

- A. The access method used for the network
- B. The transmission standard of the equipment used
- C. The use of strong encryption for transmissions
- D. The transmission wattage rating used on the NIC

Answer: B

**NEW QUESTION 171**

What are three characteristics of Ethernet network topology? (Choose three.)

- A. It uses tokens to avoid collisions on the network.
- B. It can use coaxial, twisted pair, and fiber optic media.
- C. It comprises the largest share of the networks in place today.
- D. It is a non-switching protocol.
- E. It can negotiate different transmission speeds.

Answer: ABD

**NEW QUESTION 173**

If a router is installed so that it separates a DHCP server from its clients, the clients will:

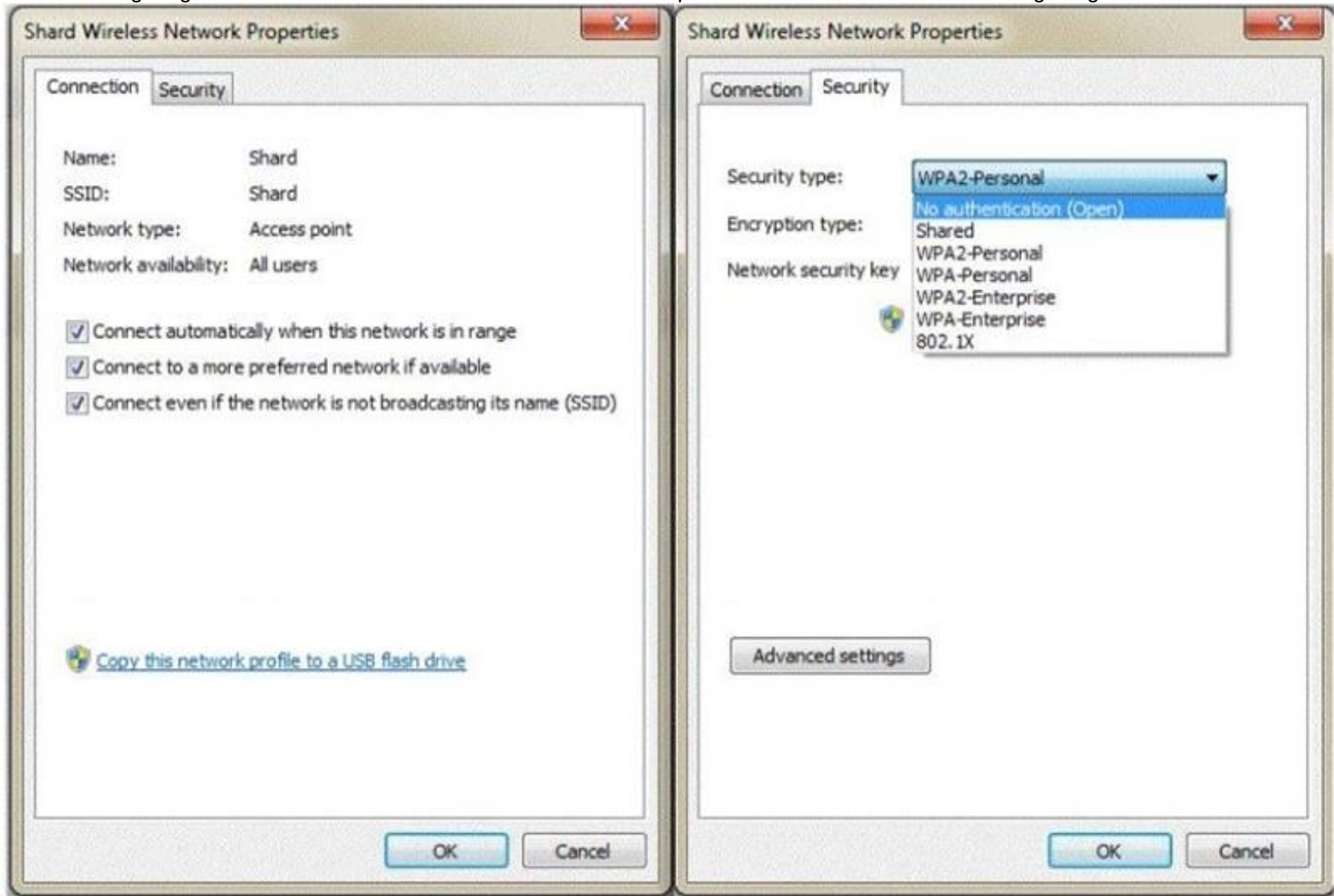
- A. Immediately lose connectivity to all segments.
- B. Be unable to obtain their leases from the server.
- C. Immediately lose connectivity to the local segment.
- D. Receive an immediate renewal of their lease.

Answer: B

NEW QUESTION 176

HOTSPOT

You are configuring a wireless network with the Wireless Network Properties that are shown in the following image:



Use the drop-down menus to select the answer choice that completes each statement. Each correct selection is worth one point.

Answer Area

To manually select which network to connect to, you should uncheck [answer choice]

▼

Connect automatically when this network is in range.  
Connect to a more preferred network if available.  
Connect even if the network is not broadcasting its name (SSID).

The [answer choice] security type requires certificates for its encryption.

▼

WPA-Enterprise  
WPA2-Personal  
802.1X

- A. Mastered
- B. Not Mastered

Answer: A

Explanation:

Answer Area

To manually select which network to connect to, you should uncheck [answer choice]

▼

Connect automatically when this network is in range.  
Connect to a more preferred network if available.  
Connect even if the network is not broadcasting its name (SSID).

The [answer choice] security type requires certificates for its encryption.

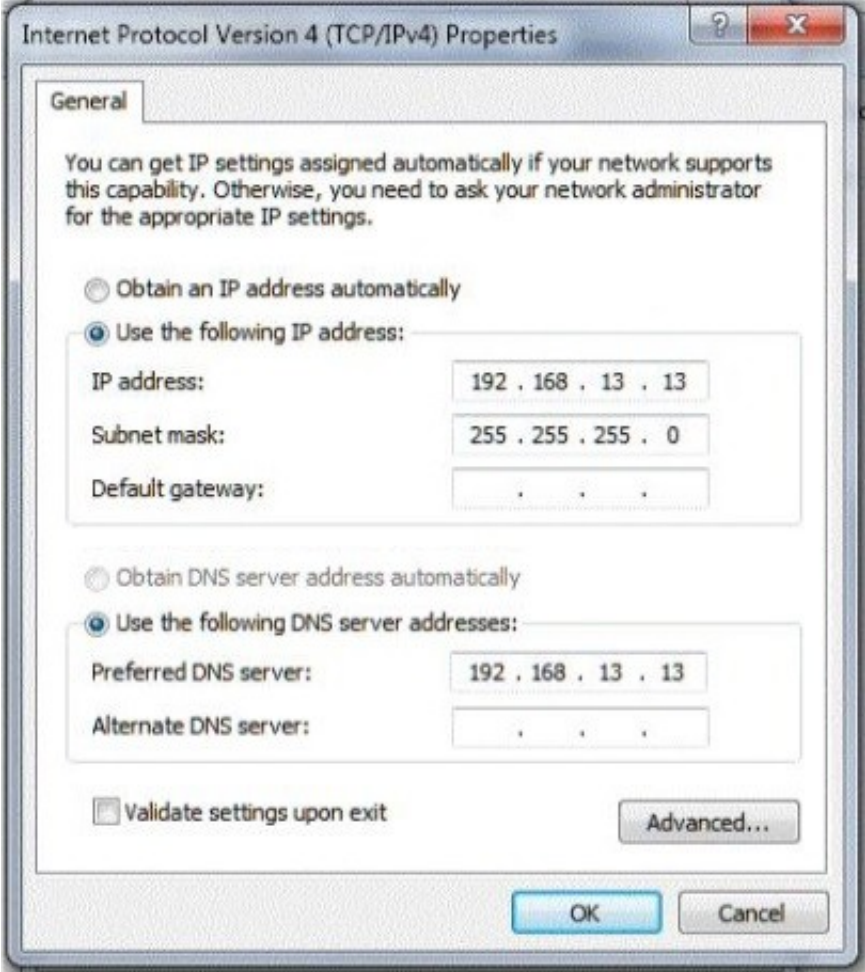
▼

WPA-Enterprise  
WPA2-Personal  
802.1X

NEW QUESTION 178

HOTSPOT

You cannot get to any site on the Internet or on the school's intranet. Your school uses DHCP. You check your network settings, which are configured as shown in the following image:



You need to change the settings to access websites. Use the drop-down menus to select the answer choice that completes each statement. Each correct selection is worth one point.

Answer Area

Changing the IP address settings to **[answer choice]** will allow Internet access.

▼

have a default gateway address of 192.168.1.1

have a default gateway address of 192.168.13.13

obtain an IP address automatically

Setting the DNS server settings to **[answer choice]** will allow the user's computer to look up website addresses.

▼

obtain DNS server address automatically

set Preferred DNS server to Nothing

set Alternate DNS server to 192.168.13.13

- A. Mastered
- B. Not Mastered

Answer: A

Explanation:

Answer Area

Changing the IP address settings to **[answer choice]** will allow Internet access.

▼

have a default gateway address of 192.168.1.1

have a default gateway address of 192.168.13.13

obtain an IP address automatically

Setting the DNS server settings to **[answer choice]** will allow the user's computer to look up website addresses.

▼

obtain DNS server address automatically

set Preferred DNS server to Nothing

set Alternate DNS server to 192.168.13.13

NEW QUESTION 182

The type of connector used on a 100BaseT Ethernet cable is:

- A. RJ-11
- B. RJ-45.
- C. TNC.
- D. BNC.

Answer: B

NEW QUESTION 187



A cable that meets the I000BaseT standard has a maximum length of:

- A. 100 m
- B. 250 m
- C. 500 m
- D. 1,000 m

**Answer:** A

**NEW QUESTION 189**

This question requires that you evaluate the underlined text to determine if it is correct. All session data is encrypted between all machines while using telnet. Select the correct answer if the underlined text does not make the statement correct. Select 'No change is needed' if the underlined text makes the statement correct.

- A. Not encrypted
- B. Encrypted between any Windows machines
- C. Encrypted only to any non-Windows machines
- D. No change is needed

**Answer:** A

**NEW QUESTION 191**

DRAG DROP

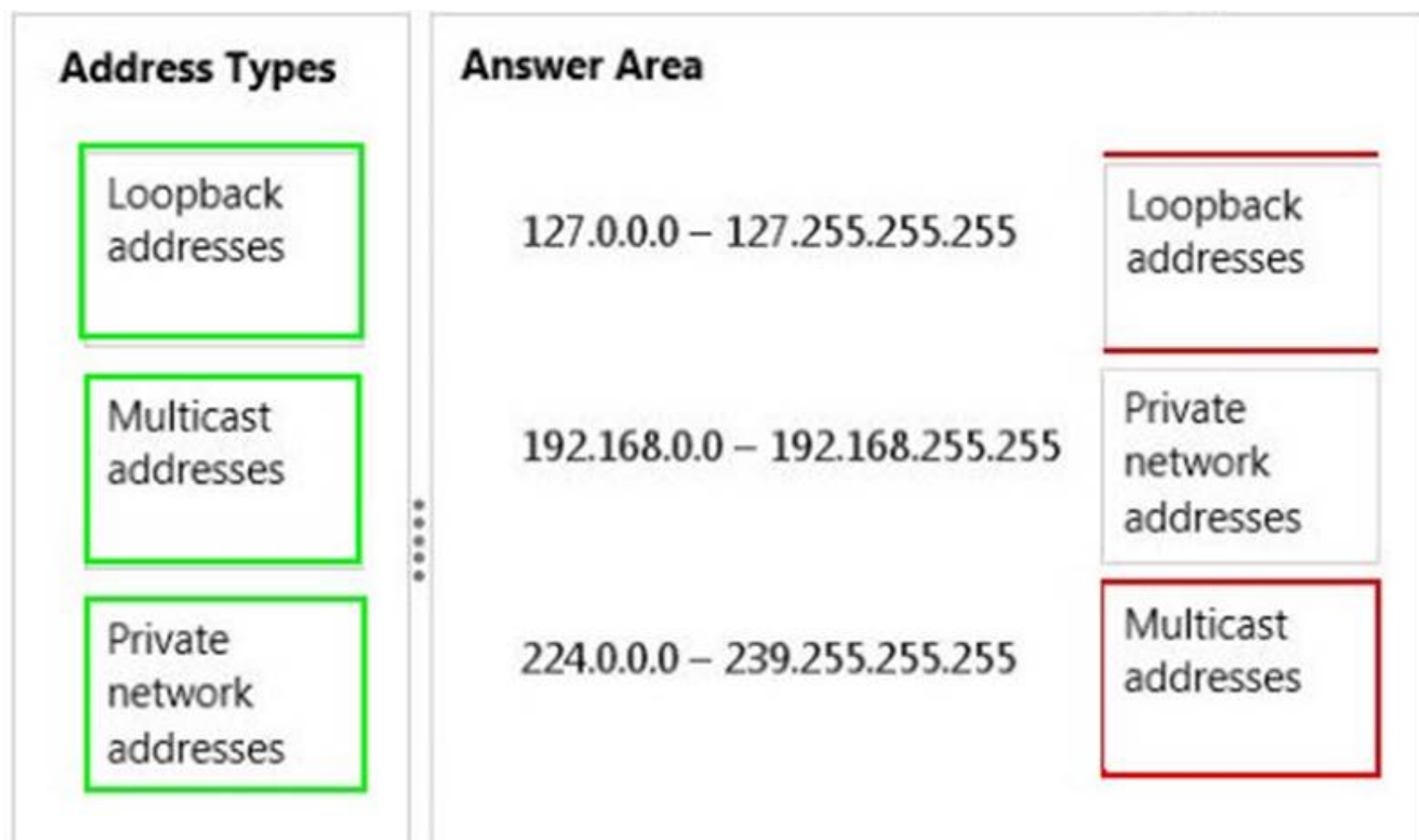
Match each address type to its appropriate range.  
To answer, drag the appropriate address type from the column on the left to its range on the right. Each address type may be used once, more than once, or not at all. Each correct match is worth one point.

Address Types		Answer Area
Loopback addresses		127.0.0.0 – 127.255.255.255 Address Type
Multicast addresses		192.168.0.0 – 192.168.255.255 Address Type
	⋮	
Private network addresses		224.0.0.0 – 239.255.255.255 Address Type

- A. Mastered
- B. Not Mastered

**Answer:** A

**Explanation:**



#### NEW QUESTION 196

One reason to incorporate VLANs in a network is to:

- A. Increase the number of available IP addresses.
- B. Increase the number of available Media Access Control (MAC) addresses.
- C. Reduce the number of broadcast domains.
- D. Reduce the number of nodes in a broadcast domain.

**Answer: D**

#### NEW QUESTION 197

Which of the following is a public IP address?

- A. 10.156.89.1
- B. 68.24.78.221
- C. 172.16.152.48
- D. 192.168.25.101

**Answer: B**

#### NEW QUESTION 202

The function of a router is to:

- A. Provide IP subnet masks for hosts.
- B. Forward traffic to other networks.
- C. Broadcast routing tables to clients.
- D. Store tables for name resolution.

**Answer: B**

#### NEW QUESTION 206

What type of record does DNS use to find a mail service?

- A. Service (SRV) DNS record
- B. Canonical (CNAME) DNS record
- C. Mail Exchanger (MX) DNS record
- D. Host (A) DNS record

**Answer: C**

#### NEW QUESTION 211

Which wireless communication problem is caused by electromagnetic waves?

- A. Fading
- B. Attenuation
- C. Interference
- D. Diffraction

**Answer:** C

**NEW QUESTION 212**

Which two of the following are connectivity options for wide area networks (WANs)? (Choose two.)

- A. Token ring
- B. Ethernet
- C. Dial-up
- D. Leased line

**Answer:** CD

**NEW QUESTION 215**

If an 802.11g Internet connection has connectivity problems, what may be the cause?

- A. A cordless phone
- B. A cellular phone
- C. Incandescent lights
- D. Electromagnetic interference (EMI)

**Answer:** D

**NEW QUESTION 220**

.....



## Thank You for Trying Our Product

### We offer two products:

1st - We have Practice Tests Software with Actual Exam Questions

2nd - Questions and Answers in PDF Format

### 98-366 Practice Exam Features:

- \* 98-366 Questions and Answers Updated Frequently
- \* 98-366 Practice Questions Verified by Expert Senior Certified Staff
- \* 98-366 Most Realistic Questions that Guarantee you a Pass on Your First Try
- \* 98-366 Practice Test Questions in Multiple Choice Formats and Updates for 1 Year

**100% Actual & Verified — Instant Download, Please Click**  
**[Order The 98-366 Practice Test Here](#)**