

98-349 Dumps

Windows Operating System Fundamentals

<https://www.certleader.com/98-349-dumps.html>



NEW QUESTION 1

- (Exam Topic 1)

Which Windows feature will allow you to run automated scripts on a remote computer?

- A. Windows Remote Management
- B. Remote Access Services
- C. Remote Desktop Connection
- D. Virtual Private Network

Answer: A

NEW QUESTION 2

- (Exam Topic 1)

Which program will run on a 64-bit version of the Windows operating system?

- A. A 32-bit laser printer driver
- B. A 32-bit video card driver
- C. A 32-bit version of Microsoft Office
- D. A 32-bit wireless network adapter driver

Answer: C

NEW QUESTION 3

- (Exam Topic 1)

Which two versions of Windows 7 support the Encrypting File System (EFS) functionality? (Each correct answer presents a complete solution. Chose two.)

- A. Ultimate Edition
- B. Home Premium Edition
- C. Professional Edition
- D. Starter Edition

Answer: AC

Explanation:

EFS is not fully supported on Windows 7 Starter, Windows 7 Home Basic, and Windows 7 Home Premium.

NEW QUESTION 4

- (Exam Topic 1)

A Windows 7 library:

- A. Organizes user files from disparate locations.
- B. Makes copies of user files in a central location.
- C. Encrypts files by using the Encrypting File System (EFS).
- D. Restores files from system backup.

Answer: A

NEW QUESTION 5

- (Exam Topic 1)

Which feature allows you to create a new virtual application?

- A. Application Virtualization Sequencer
- B. Windows Installer
- C. Remote Desktop Connection
- D. Windows Virtual PC

Answer: A

NEW QUESTION 6

- (Exam Topic 1)

Which is the largest single file that you can store on a FAT32 file system?

- A. 4GB
- B. 8GB
- C. 16GB
- D. 32GB

Answer: A

NEW QUESTION 7

- (Exam Topic 1)

Which two descriptions of Windows PowerShell are accurate? (Choose two.)

- A. A utility for upgrading your Windows operating system

- B. Designed to synchronize files between a computer and a network location
- C. Allows you to run scripts to perform various administrative tasks
- D. An interface that is an enhancement of the capabilities of the Windows Command window

Answer: CD

NEW QUESTION 8

- (Exam Topic 1)

Which prevents you from establishing a Remote Desktop connection to a remote computer?

- A. Incorrect monitor settings in Device Manager.
- B. Incorrect screen resolution in the Display Properties dialog box.
- C. Incorrect port settings in Windows Firewall.
- D. Incorrect security settings in Internet Explorer.

Answer: C

NEW QUESTION 9

- (Exam Topic 1)

You need to migrate files and settings from a Windows XP computer to another computer that runs Windows 7. Which tool should you use?

- A. Windows Easy Transfer
- B. Windows 7 Compatibility Checker
- C. Windows Upgrade Advisor
- D. Application Compatibility Toolkit

Answer: A

NEW QUESTION 10

- (Exam Topic 1)

Which feature should you use to install the most recent definitions for Windows Defender?

- A. Windows Update
- B. Sync Center
- C. Windows Installer
- D. Programs and Features

Answer: A

NEW QUESTION 10

- (Exam Topic 1)

PowerShell is used to:

- A. Monitor user keystrokes.
- B. Repair damaged hard disk drive sectors.
- C. Automate a routine task.
- D. Extend the life of the battery.

Answer: C

NEW QUESTION 11

- (Exam Topic 1)

Which feature ensures that the latest device drivers are installed on your computer?

- A. Reliability and Performance Monitor
- B. Windows Update
- C. Task Scheduler
- D. System configuration Utility

Answer: B

NEW QUESTION 12

- (Exam Topic 1)

You need to find out whether your computer can run a program that performs resource-intensive tasks. Which Windows feature should you use?

- A. System Configuration Utility
- B. Memory Diagnostics Tool
- C. Reliability and Performance Monitor
- D. Windows Experience Index

Answer: D

NEW QUESTION 16

- (Exam Topic 1)

Which two features are supported by the Infrared Data Association (IrDA) protocol? (Each correct answer presents a complete solution. Choose two.)

- A. Data can be transferred across short distances.
- B. One computer can control another computer through a wireless connection.
- C. Some features of another computer can be controlled by using a remote control unit.
- D. The computer can identify Bluetooth devices.

Answer: AC

NEW QUESTION 17

- (Exam Topic 1)

You attempt to install Windows 7 on your personal computer. You receive an error message stating that your product key is not valid. What is causing the error?

- A. You accidentally entered the product key in lower case.
- B. Your product key does not match the version of Windows that you are installing.
- C. The product key you are trying to use has expired.
- D. You reformatted your hard disk drive before you installed Windows.

Answer: B

NEW QUESTION 18

- (Exam Topic 1)

Windows Aero is a:

- A. Pointing device
- B. Device driver
- C. Desktop theme
- D. Windows application

Answer: C

NEW QUESTION 23

- (Exam Topic 1)

You insert a software installation CD into your Windows 7 computer. The CD does not launch automatically.

You need to perform a manual installation. What should you do?

- A. From Control Panel, use Programs.
- B. From Control Panel, use Ease of Access.
- C. Browse the contents of the hard disk drive and locate the Program Files folder.
- D. Browse the contents of the CD and locate the Setup file.

Answer: D

NEW QUESTION 28

- (Exam Topic 1)

You plan to upgrade your computer to Windows 7.

You need to view a report that identifies potential compatibility problems with your computer's hardware, devices, and programs.

Which tool should you use?

- A. Sync Center
- B. Windows Anytime Upgrade
- C. Windows Upgrade Advisor
- D. Windows Easy Transfer

Answer: C

NEW QUESTION 29

- (Exam Topic 1)

What should you do to secure and protect the connection to a Bluetooth device?

- A. Turn off make device discoverable after connecting your devices.
- B. Reset the Bluetooth device to factory default settings after making a connection.
- C. Turn off the Bluetooth device when not in use.
- D. Use unique pairing codes when connecting your devices.

Answer: D

NEW QUESTION 30

- (Exam Topic 1)

Which Windows technology increases system performance by using flash memory?

- A. Direct Memory Access
- B. File compression
- C. Connect Now
- D. ReadyBoost

Answer: D

NEW QUESTION 33

- (Exam Topic 1)

Which file system is designed for transfer of large files between a personal computer and flash devices?

- A. FAT16 file system
- B. FAT32 file system
- C. exFAT file system
- D. NTFS file system

Answer: C

NEW QUESTION 35

- (Exam Topic 1)

Which Windows feature allows you to run a program on your computer that is installed on another computer?

- A. Windows Virtual PC
- B. Microsoft Application Virtualization
- C. Remote Desktop Connection
- D. System Center Service Manager

Answer: B

NEW QUESTION 36

- (Exam Topic 1)

You have a document that you update regularly. To access it directly from a/an:

- A. folder.
- B. icon.
- C. library.
- D. shortcut.

Answer: D

NEW QUESTION 37

- (Exam Topic 1)

Which Windows feature allows you to request that someone else control your computer from their computer?

- A. Remote Assistance
- B. Action Center
- C. Sync Center
- D. Connect Now

Answer: A

NEW QUESTION 41

- (Exam Topic 1)

Which Windows feature should you use to find patches for Internet Explorer?

- A. Sync Center
- B. System Information
- C. Internet Properties
- D. Windows Update

Answer: D

NEW QUESTION 43

- (Exam Topic 1)

Which Windows 7 feature should you use to ensure that only administrators can install new software?

- A. Network and Sharing Center
- B. User Account Control
- C. Microsoft Management Console
- D. Ease of Access

Answer: B

NEW QUESTION 46

- (Exam Topic 1)

What is the maximum size of a virtual hard disk?

- A. 2 terabytes
- B. 5 terabytes
- C. 16 terabytes
- D. 500GB

Answer: A

NEW QUESTION 49

- (Exam Topic 1)

Which feature should you use to restrict certain actions only to an administrator account on a Windows 7 computer?

- A. Windows Experience Index
- B. User Account Control
- C. BitLocker
- D. Computer Management

Answer: B

NEW QUESTION 52

- (Exam Topic 1)

Which is a potential risk when redirecting a USB storage device during a Remote Desktop session?

- A. Access can be slower.
- B. The device can stop working.
- C. The session can stop responding.
- D. Data can be lost.

Answer: D

NEW QUESTION 53

- (Exam Topic 1)

You want to upgrade your Windows operating system to Windows 7.

Which feature should you use to find out whether the existing devices will work after the upgrade?

- A. System Manager
- B. Windows 7 Compatibility Center
- C. Device Manager
- D. Windows Update

Answer: B

NEW QUESTION 57

- (Exam Topic 1)

Which Windows feature allows you to manually control another Windows computer?

- A. Remote Control Monitor
- B. Remote Desktop Connection
- C. Remote Power Management
- D. Remote Procedure Call

Answer: B

NEW QUESTION 62

- (Exam Topic 1)

You need to install Windows 7 over an existing version of Windows.

Which type of installation should you use to retain all your files, settings, and programs on your computer?

- A. Use the Windows Easy Transfer tool, and select Custom (advanced).
- B. Use the Windows 7 installation disk to perform a system repair.
- C. Use the Windows Easy Transfer tool, and select Upgrade.
- D. Use the Windows 7 installation disk to perform a clean installation.

Answer: C

NEW QUESTION 64

- (Exam Topic 1)

You want to connect to a wireless access point. You need to view a list of available networks.

Which two actions should you perform? (Each correct answer presents a complete solution. Choose two.)

- A. Click the network icon in the notification area.
- B. From Control Panel, use Windows Mobility Center.
- C. From Control Panel, use Network and Sharing Center.
- D. From Control Panel, use Sync Center.
- E. From Control Panel, use Ease of Access.

Answer: AC

NEW QUESTION 65

- (Exam Topic 2)

You need to secure the contents of your entire hard disk drive even if an unauthorized user steals your computer.

Which method should you use?

- A. Rights Management Services

- B. File-level share permissions
- C. Password-protection
- D. BitLocker encryption

Answer: D

NEW QUESTION 70

- (Exam Topic 2)

After you remove malicious software from an infected computer, the user still experiences problems. When the user opens the browser, it redirects to compromised websites.

You need to troubleshoot the problem.

Which three areas should you investigate? (Choose three.)

- A. The system's hosts file
- B. The proxy settings
- C. The Windows Action Center
- D. The browser's security zone settings
- E. The browser's home page setting

Answer: CDE

NEW QUESTION 74

- (Exam Topic 2)

This question requires that you evaluate the underlined text to determine if it is correct. By default, Windows 7 allows users with any user account to install manual updates.

Select the correct answer if the underlined text does not make the statement correct. Select "No change is needed" if the underlined text makes the statement correct.

- A. administrator user accounts
- B. standard user accounts
- C. guest user accounts
- D. No change is needed.

Answer: A

NEW QUESTION 76

- (Exam Topic 2)

This question requires that you evaluate the underlined text to determine if it is correct. You can set Windows to automatically install all updates through Windows Update.

Select the correct answer if the underlined text does not make the statement correct. Select "No change is needed" if the underlined text makes the statement correct.

- A. Important updates only
- B. Recommended updates only
- C. Optional updates only
- D. No change is needed

Answer: A

NEW QUESTION 77

- (Exam Topic 2)

You are working as a technical intern for Tailspin Toys. A product developer plans to attend a convention in France and wants to bring a company-owned Windows 7 Ultimate laptop. Your manager is concerned about the security of the information contained on the laptop and asks you to turn on BitLocker.

You receive the error message shown in the following image:



Use the drop-down menus to select the answer choice that completes each statement. Each correct selection is worth one point

Answer Area

You check **[answer choice]** on the system to see if a TPM was disabled.

If it is determined that the system does not have a TPM, you should use **[answer choice]** to allow you to enable BitLocker on the computer.

Answer Area

You check [answer choice] on the system to see if a TPM was disabled.

System Bios
Disk Management
Devices and Printers

If it is determined that the system does not have a TPM, you should use [answer choice] to allow you to enable BitLocker on the computer.

Local Security Policy
Disk Management
BitLocker Administration

- A. Mastered
- B. Not Mastered

Answer: A

Explanation:

You check [answer choice] on the system to see if a TMP was disabled.

System Bios

If it is determined that the system does not have a TPM, you should use [answer choice] to allow you to enable BitLocker on the computer.

Local Security Policy

NEW QUESTION 78

- (Exam Topic 2)

You are an intern at a small company. You are learning how to run some of the system management tools from a command line.

You want to access Device Manager from a command prompt. Which command should you enter?

- A. devmgmt.cpl
- B. devmgmt.dll
- C. devmgmt.exe
- D. devmgmt.msc

Answer: D

Explanation:

References:[https://technet.microsoft.com/en-us/library/cc754081\(v=ws.11\).aspx](https://technet.microsoft.com/en-us/library/cc754081(v=ws.11).aspx)

NEW QUESTION 83

- (Exam Topic 2)

You are setting up accounts on your computer so your roommates can log on to your computer and browse the web.

You decide to use the graphical Local Users and Groups tool to configure the user account on your computer. What does the Action display when you select a user name?

- A. A history of all actions you have performed on that user
- B. All pending actions the computer will execute
- C. Buttons to record the action you take on that user
- D. Available actions based on that user

Answer: D

NEW QUESTION 84

- (Exam Topic 2)

For each of the following statements, select Yes if the statement is true. Otherwise, select No. Each correct selection is worth one point.

Answer Area

	Yes	No
A Windows 7 library can display files from various locations on your computer, files from various locations across several computers on the same network, and files from various Internet locations.	<input type="radio"/>	<input type="radio"/>
When a location is added to an existing Windows 7 library, the contents of the added location are automatically copied to the library.	<input type="radio"/>	<input type="radio"/>
A Windows 7 library can include folders located on a CD or DVD.	<input type="radio"/>	<input type="radio"/>

- A. Mastered
- B. Not Mastered

Answer: A

Explanation:

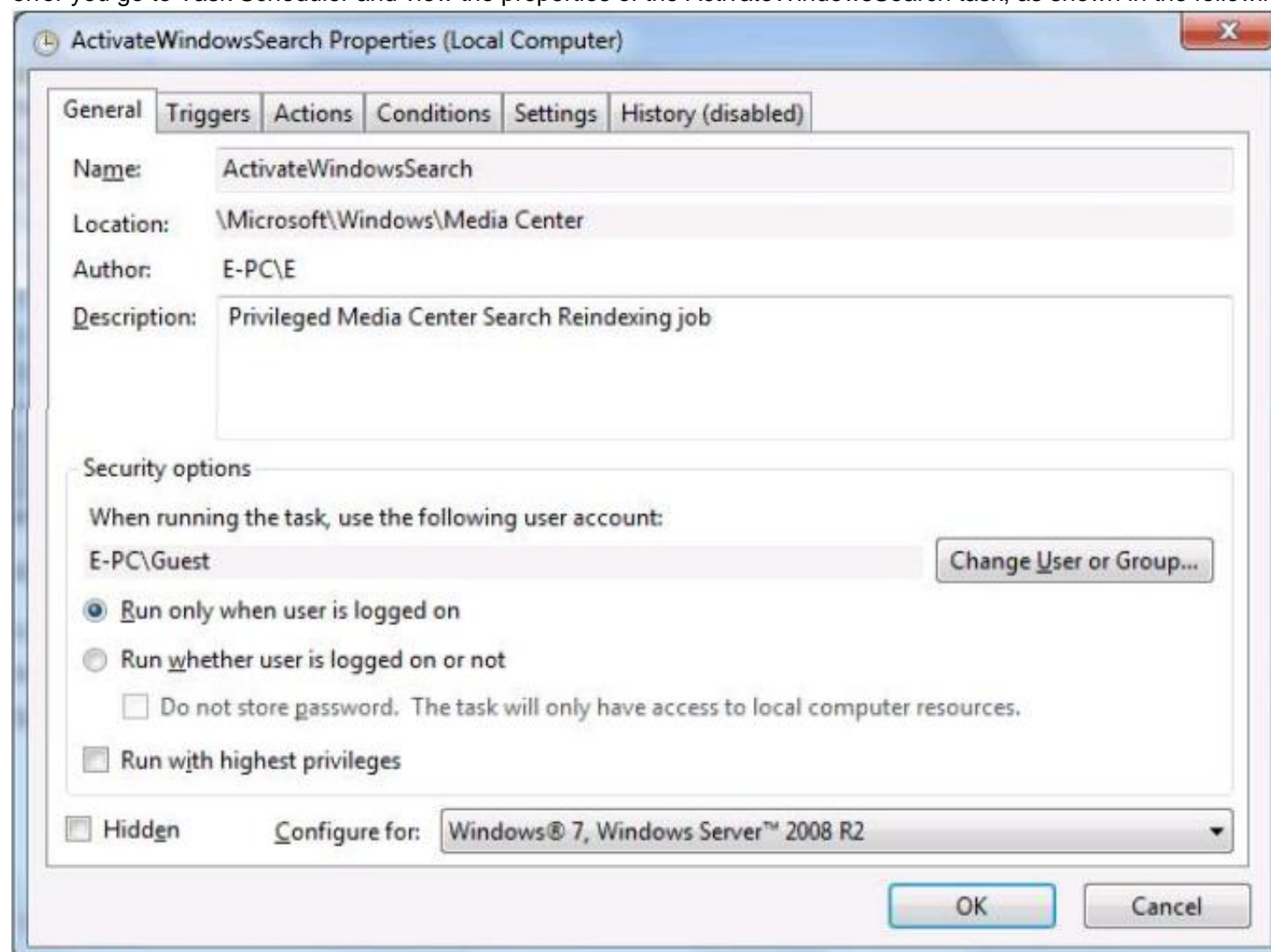
Answer Area

	Yes	No
A Windows 7 library can display files from various locations on your computer, files from various locations across several computers on the same network, and files from various Internet locations.	<input type="radio"/>	<input checked="" type="radio"/>
When a location is added to an existing Windows 7 library, the contents of the added location are automatically copied to the library.	<input type="radio"/>	<input checked="" type="radio"/>
A Windows 7 library can include folders located on a CD or DVD.	<input type="radio"/>	<input checked="" type="radio"/>

NEW QUESTION 85

- (Exam Topic 2)

Your roommate complains that her computer is showing an error message that says ActivateWindowsSearch scheduled task failed to run. To troubleshoot the error you go to Task Scheduler and view the properties of the ActivateWindowsSearch task, as shown in the following image:



Use the drop-down menus to select the answer choice that completes each statement. Each correct selection is worth one point.

Answer Area

To resolve the issue, the first task to complete is [answer choice]

To resolve the issue, the second task to complete is [answer choice]

Answer Area

To resolve the issue, the first task to complete is [answer choice]

To resolve the issue, the second task to complete is [answer choice]

- A. Mastered
- B. Not Mastered

Answer: A

Explanation:

Answer Area

To resolve the issue, the first task to complete is [answer choice]

set the task to run as SYSTEM.
set the task to run as LOCAL SERVICE.
set the task to run as NETWORK SERVICE.

To resolve the issue, the second task to complete is [answer choice]

set the task to run whether the user is logged on or not.
set the task to run with highest privileges.
set the task to "Configure" for Windows Vista.

NEW QUESTION 87

- (Exam Topic 2)

You need to print a paper to give to your professor. A classmate says you can print to a USB printer, which is connected to another computer.

You try to add to your printer list and get prompted for a password that you do not know. Why does adding the printer to your computer require a password?

- A. Your User ID is not part of the local Administrators group.
- B. Your computer is not part of a domain.
- C. Your computer is not on the same network as the printer.
- D. Password Protected Sharing is enabled.

Answer: D

Explanation:

References:<https://www.recoverlostpassword.com/windows-10/how-to-turn-off-password-protected-sharing-inw>

NEW QUESTION 90

- (Exam Topic 2)

Match the Windows feature to its corresponding usage.

To answer, drag the appropriate Windows feature from the column on the left to its corresponding usage on the right. Each Windows feature may be used once, more than once, or not at all. Each correct match is worth one point.

Windows features

Answer Area

Windows Media Player

Windows Media Center

IPCONFIG

Snipping Tool

MSCONFIG

enables screen capture and editing of the captured image

troubleshoots, enables, and disables startup services

requires use of the command prompt

enables media playback, DVR functionality, HDTV capability, and watching live TV

Windows feature

Windows feature

Windows feature

Windows feature

- A. Mastered
- B. Not Mastered

Answer: A

Explanation:

Windows features

Windows Media Player

Windows Media Center

IPCONFIG

Snipping Tool

MSCONFIG

Answer Area

enables screen capture and editing of the captured image

troubleshoots, enables, and disables startup services

requires use of the command prompt

enables media playback, DVR functionality, HDTV capability, and watching live TV

Snipping Tool

MSCONFIG

IPCONFIG

Windows Media Center

NEW QUESTION 94

- (Exam Topic 2)

This question requires that you evaluate the underlined text to determine if it is correct.

You can export information to a text file by using the msconfig command from a command prompt. Select the correct answer if the underlined text does not make the statement correct. Select "No change is needed" if the underlined text makes the statement correct.

- A. msinfo32
- B. perfmon
- C. taskmgr
- D. No change is needed

Answer: A

NEW QUESTION 96

- (Exam Topic 2)

This question requires that you evaluate the underlined text to determine if it is correct.

FAT32 is the preferred file system for Windows 7.

Select the correct answer if the underlined text does not make the statement correct. Select "No change is needed" if the underlined text makes the statement correct.

- A. NTFS
- B. FAT16
- C. EFS
- D. No change is needed

Answer: A

NEW QUESTION 99

- (Exam Topic 2)

Your brother asks you for help installing Windows 10 on this laptop. His laptop does not have a DVD drive on it.

Which software should you use to create a bootable USB memory stick that can be used to install Windows?

- A. Media creation tool
- B. Windows Update
- C. Windows Easy transfer
- D. PCmover Express

Answer: A

NEW QUESTION 104

- (Exam Topic 2)

For each of the following statements, select Yes if the statement is true. Otherwise, select No. Each correct selection is worth one point.

Answer Area

	Yes	No
Only an administrator can install a plug and play device.	<input type="radio"/>	<input type="radio"/>
If a plug and play device driver is placed in the driver store, non-administrative accounts can install the device.	<input type="radio"/>	<input type="radio"/>
A network printer installs automatically on Windows.	<input type="radio"/>	<input type="radio"/>

A. Mastered
B. Not Mastered

Answer: A

Explanation:

Answer Area

	Yes	No
Only an administrator can install a plug and play device.	<input type="radio"/>	<input checked="" type="radio"/>
If a plug and play device driver is placed in the driver store, non-administrative accounts can install the device.	<input checked="" type="radio"/>	<input type="radio"/>
A network printer installs automatically on Windows.	<input type="radio"/>	<input checked="" type="radio"/>

NEW QUESTION 109

- (Exam Topic 2)

For each of the following statements, select Yes if the statement is true. Otherwise, select No. Each correct selection is worth one point.

Answer Area

	Yes	No
BitLocker is required for encrypting files.	<input type="radio"/>	<input type="radio"/>
An encrypted file can be permanently unencrypted.	<input type="radio"/>	<input type="radio"/>
Windows 7 Professional supports BitLocker.	<input type="radio"/>	<input type="radio"/>

A. Mastered
B. Not Mastered

Answer: A

Explanation:

Answer Area

	Yes	No
BitLocker is required for encrypting files.	<input type="radio"/>	<input checked="" type="radio"/>
An encrypted file can be permanently unencrypted.	<input checked="" type="radio"/>	<input type="radio"/>
Windows 7 Professional supports BitLocker.	<input type="radio"/>	<input checked="" type="radio"/>

NEW QUESTION 114

- (Exam Topic 2)

Microsoft Management Console has snap-ins that are used to manage:

- A. Contacts, calendars, and other data in the cloud.
- B. Hardware, software, and network components on a computer.
- C. Restore points for recovery.
- D. IP addresses on a peer-to-peer network.

Answer: B

NEW QUESTION 116

- (Exam Topic 2)

Which three of these may be included in a service pack? (Choose three.)

- A. A remote servicing of the operating system
- B. A reinstallation of the operating system
- C. All previously released important and recommended Windows Updates
- D. New functionality
- E. Fixes for security issues

Answer: CDE

NEW QUESTION 118

- (Exam Topic 2)

Instructions: For each of the following statements, select Yes if the statement is true. Otherwise, select No. NOTE: Each correct selection is worth one point.

Answer Area

	Yes	No
Launch Action Center from the System Tray to troubleshoot the system problems.	<input type="radio"/>	<input type="radio"/>
Use the System option in the Control Panel System and Security area to defragment.	<input type="radio"/>	<input type="radio"/>
Use the Folder Options selection in the Control Panel Appearance and personalization area to have file extensions appear in Windows Explorer.	<input type="radio"/>	<input type="radio"/>

- A. Mastered
- B. Not Mastered

Answer: A

Explanation:

Answer Area

	Yes	No
Launch Action Center from the System Tray to troubleshoot the system problems.	<input checked="" type="radio"/>	<input type="radio"/>
Use the System option in the Control Panel System and Security area to defragment.	<input checked="" type="radio"/>	<input type="radio"/>
Use the Folder Options selection in the Control Panel Appearance and personalization area to have file extensions appear in Windows Explorer.	<input checked="" type="radio"/>	<input type="radio"/>

NEW QUESTION 122

- (Exam Topic 2)

For each of the following statements, select Yes if the statement is true. Otherwise, select No, Each correct selection is worth one point.

Answer Area

	Yes	No
Only an administrator can install a plug and play device.	<input type="radio"/>	<input type="radio"/>
If a plug and play device driver is placed in the driver store, non-administrative accounts can install the device.	<input type="radio"/>	<input type="radio"/>
A network printer installs automatically on Windows.	<input type="radio"/>	<input type="radio"/>

- A. Mastered
- B. Not Mastered

Answer: A

Explanation:

Answer Area

	Yes	No
Only an administrator can install a plug and play device.	<input type="radio"/>	<input checked="" type="radio"/>
If a plug and play device driver is placed in the driver store, non-administrative accounts can install the device.	<input checked="" type="radio"/>	<input type="radio"/>
A network printer installs automatically on Windows.	<input type="radio"/>	<input checked="" type="radio"/>

NEW QUESTION 123

- (Exam Topic 2)

For each of the following statements, select Yes if the statement is true. Otherwise, select No. Each correct selection is worth one point.

	Yes	No
An application that is installed by using Group Policy may be uninstalled by using Group Policy.	<input type="radio"/>	<input type="radio"/>
An application that is installed by using Group Policy may be uninstalled by using a script.	<input type="radio"/>	<input type="radio"/>
An application that is installed by using Group Policy may be uninstalled manually.	<input type="radio"/>	<input type="radio"/>

- A. Mastered
- B. Not Mastered

Answer: A

Explanation:

	Yes	No
An application that is installed by using Group Policy may be uninstalled by using Group Policy.	<input checked="" type="radio"/>	<input type="radio"/>
An application that is installed by using Group Policy may be uninstalled by using a script.	<input checked="" type="radio"/>	<input type="radio"/>
An application that is installed by using Group Policy may be uninstalled manually.	<input checked="" type="radio"/>	<input type="radio"/>

NEW QUESTION 124

- (Exam Topic 2)

You have an internship at a company that wants you to help deploy Windows 7 to a dozen computers. The company uses the Microsoft Deployment Toolkit instead of System Center Configuration Manager.

Which three migration methods are possible? (Choose three.)

- A. LTI
- B. HTTP
- C. USB
- D. UDI
- E. ZTI

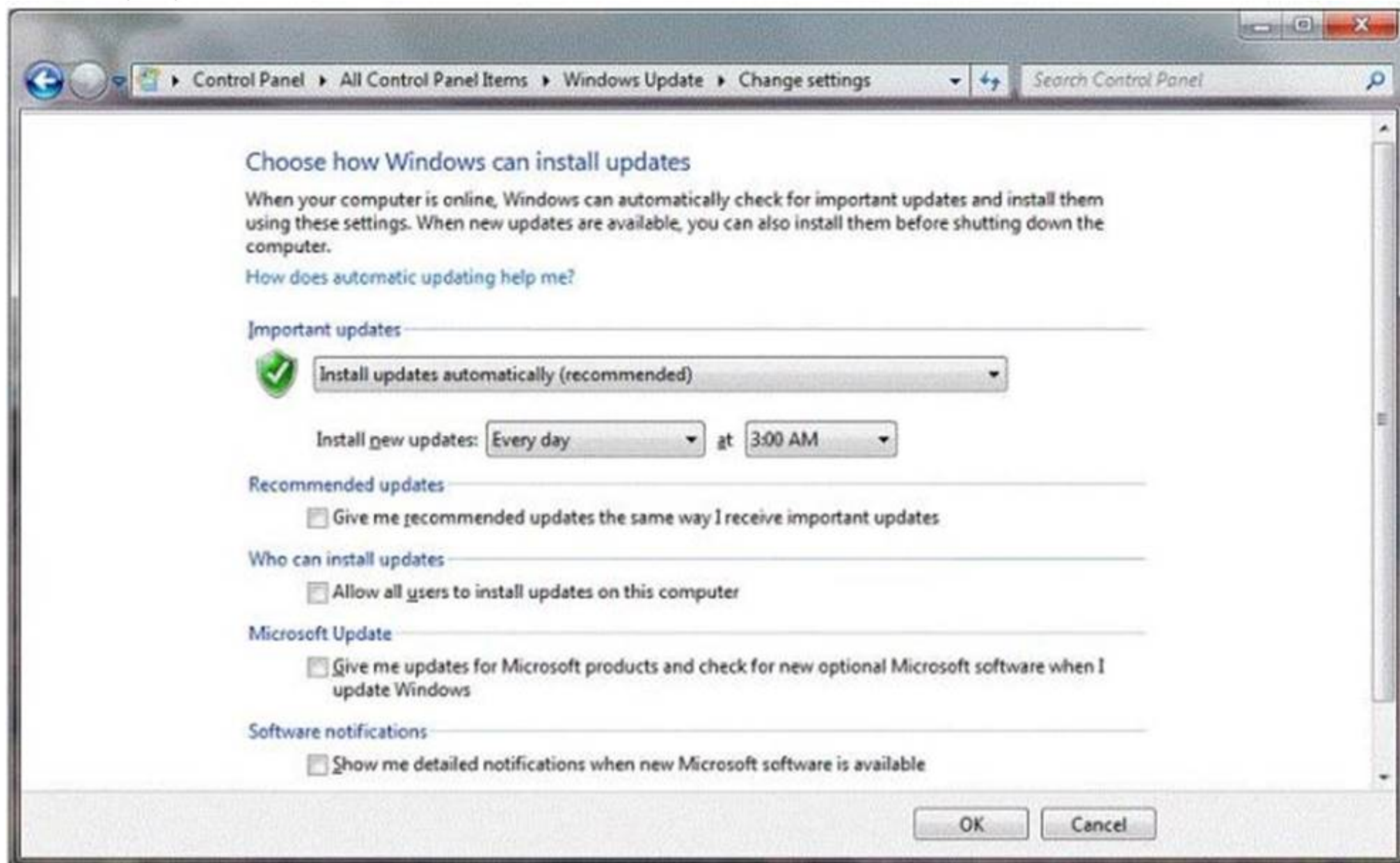
Answer: BCD

NEW QUESTION 128

- (Exam Topic 2)

You have an administrator account on your computer. You set up standard user accounts for each of your roommates.

You want to ensure that your computer automatically receives the latest updates, even when your roommates are using the computer. You review the information in the following image:



Use the drop-down menus to select the answer choice that completes each statement. Each correct selection is worth one point.

Answer Area

To allow updates to install when your roommates are using the computer, select the **[Answer choice]**

To allow one of your roommates to install Driver Updates, select the **[Answer choice]**

Answer Area

To allow updates to install when your roommates are using the computer, select the **[Answer choice]**

 "Allow all users to install updates on this computer" box.
 "Give me recommended updates the same way I receive important updates" box.
 "Give me updates for Microsoft products and check for new optional Microsoft Software when I update Windows" box.

To allow one of your roommates to install Driver Updates, select the **[Answer choice]**

 "Give me recommended updates the same way I receive important updates" box.
 "Allow all users to install updates on this computer" box.
 "Give me updates for Microsoft products and check for new optional Microsoft Software when I update Windows" box.

- A. Mastered
- B. Not Mastered

Answer: A

Explanation:

Answer Area

To allow updates to install when your roommates are using the computer, select the **[Answer choice]**

 "Allow all users to install updates on this computer" box.
 "Give me recommended updates the same way I receive important updates" box.
 "Give me updates for Microsoft products and check for new optional Microsoft Software when I update Windows" box.

To allow one of your roommates to install Driver Updates, select the **[Answer choice]**

 "Give me recommended updates the same way I receive important updates" box.
 "Allow all users to install updates on this computer" box.
 "Give me updates for Microsoft products and check for new optional Microsoft Software when I update Windows" box.

NEW QUESTION 131

- (Exam Topic 2)

You are preparing to install Windows 7 on a new computer. You need to enable BitLocker for encryption. What is required in order to enable BitLocker?

- A. FAT32 system drive
- B. Smart card
- C. NTFS system drive
- D. Trusted Platform Module (TPM)

Answer: C

NEW QUESTION 133

- (Exam Topic 2)

This question requires that you evaluate the underlined text to determine if it is correct.

You need to install Windows 7 on a computer using a USB drive. You need to use a ZIP to create that drive. Select the correct answer if the underlined text does not make the statement correct. Select "No change is needed" if the underlined text makes the statement correct.

- A. An ISO
- B. A PXE
- C. A ZTI
- D. No change is needed

Answer: A

NEW QUESTION 134

- (Exam Topic 2)

Your friend asks for your help with upgrading his computer to Windows 10. You plan to perform a clean install of Windows 10 on his computer, which has Windows 8.1 installed.

What should you tell your friend he will be able to find on the computer's hard drive after the installation is complete?

- A. previous Windows8.1 installation
- B. backup copy of all personal files
- C. user profiles migrated to Windows 10
- D. Windows 10 installation files

Answer: D

Explanation:

References: <https://www.cnet.com/how-to/clean-install-windows-10/>

NEW QUESTION 139

- (Exam Topic 2)

This requires that you evaluate the underlined text to determine if it is correct.

A Service Account requires local group membership in the Administrators group to start and stop services. Instructions: Review the underlined text. If it makes the statement correct, select "No change is needed." If the statement is incorrect, select the answer choice that makes the statement correct.

- A. Power Users
- B. Netmon Users
- C. Access Control Assistance Operators
- D. No change is needed

Answer: D

NEW QUESTION 142

- (Exam Topic 2)

What is a reason to use FAT32 as the file system for Windows 7?

- A. To have support for files larger than 4 GB
- B. To recover disk errors automatically
- C. To dual boot with an older version of Windows
- D. To set file permissions

Answer: C

NEW QUESTION 143

- (Exam Topic 2)

For each of the following statements, select Yes if the statement is true. Otherwise, select No. Each correct selection is worth one point.

Answer Area	Yes	No
Installing Windows XP Mode requires a separate license for Windows XP.	<input type="radio"/>	<input type="radio"/>
Programs from an XP Mode installation display in both the Windows 7 list of programs and the XP Mode list of programs.	<input type="radio"/>	<input type="radio"/>
Windows XP Mode is available for Windows 7 Home.	<input type="radio"/>	<input type="radio"/>

- A. Mastered
- B. Not Mastered

Answer: A

Explanation:

Answer Area	Yes	No
Installing Windows XP Mode requires a separate license for Windows XP.	<input type="radio"/>	<input checked="" type="radio"/>
Programs from an XP Mode installation display in both the Windows 7 list of programs and the XP Mode list of programs.	<input checked="" type="radio"/>	<input type="radio"/>
Windows XP Mode is available for Windows 7 Home.	<input type="radio"/>	<input checked="" type="radio"/>

NEW QUESTION 147

- (Exam Topic 2)

Which two system requirements allow Windows 7 to take advantage of 64-bit processing? (Choose two.)

- A. A minimum of 2 GB of RAM
- B. A minimum of 4 GB of RAM

- C. A minimum of 16 GB of available hard disk space
- D. A minimum of 20 GB of available hard disk space

Answer: AD

NEW QUESTION 152

- (Exam Topic 2)

For each of the following statements, select Yes if the statement is true. Otherwise, select No. Each correct selection is worth one point.

Answer Area

	Yes	No
Restore deleted data files by using the System Restore Wizard.	<input type="radio"/>	<input type="radio"/>
Restore registry settings by using the System Restore Wizard.	<input type="radio"/>	<input type="radio"/>
Restore data files from a system image backup.	<input type="radio"/>	<input type="radio"/>

- A. Mastered
- B. Not Mastered

Answer: A

Explanation:

Answer Area

	Yes	No
Restore deleted data files by using the System Restore Wizard.	<input type="radio"/>	<input checked="" type="radio"/>
Restore registry settings by using the System Restore Wizard.	<input checked="" type="radio"/>	<input type="radio"/>
Restore data files from a system image backup.	<input checked="" type="radio"/>	<input type="radio"/>

NEW QUESTION 156

- (Exam Topic 2)

For each of the following statements, select Yes if the statement is true. Otherwise, select No. Each correct selection is worth one point.

Answer Area

	Yes	No
Installing Windows XP Mode requires a separate license for Windows XP.	<input type="radio"/>	<input type="radio"/>
Programs from an XP Mode installation display in both the Windows 7 list of programs and the XP Mode list of programs.	<input type="radio"/>	<input type="radio"/>
Windows XP Mode is available for Windows 7 Home.	<input type="radio"/>	<input type="radio"/>

- A. Mastered
- B. Not Mastered

Answer: A

Explanation:

Answer Area

	Yes	No
Installing Windows XP Mode requires a separate license for Windows XP.	<input type="radio"/>	<input checked="" type="radio"/>
Programs from an XP Mode installation display in both the Windows 7 list of programs and the XP Mode list of programs.	<input checked="" type="radio"/>	<input type="radio"/>
Windows XP Mode is available for Windows 7 Home.	<input type="radio"/>	<input checked="" type="radio"/>

NEW QUESTION 160

- (Exam Topic 2)

This QUESTION requires that you evaluate the underlined text to determine if it is correct.

Running Windows Update will automatically download and install device drivers for Bluetooth devices. Instructions: Review the underlined text. If it makes the statement correct, select “No change is needed.” If the statement is incorrect, select the answer choice that makes the statement correct.

- A. Device Manager
- B. Hardware Wizard
- C. No change is needed.
- D. Bluetooth Support Service

Answer: C

Explanation:

References:<https://support.microsoft.com/en-za/help/4028443/windows-update-drivers-in-windows-10>

NEW QUESTION 163

- (Exam Topic 2)

Two students in your class want to work together on a project over the summer break- Courtney is staying on campus, and Ty is taking an internship in Japan. They want to know how to share files in order to work remotely. You suggest Microsoft OneDrive.

Which three features of OneDrive can help Ty and Courtney? (Choose three.)

- A. OneDrive automatically keeps track of the previous 25 versions of all documents.
- B. OneDrive provides the ability to view and control someone's computer desktop to allow for easier collaboration.
- C. When the OneDrive desktop application is installed on a Windows 7 computer, Microsoft Office applications can save directly to OneDrive folders.
- D. OneDrive provides automatic BitLocker encryption of the files stored in the local OneDrive folder and the OneDrive.com folders.
- E. OneDrive allows access to files from any networked device by using OneDrive.com or a OneDrive application on their mobile device.

Answer: ACE

NEW QUESTION 165

- (Exam Topic 2)

You need to return your Windows system files and settings to an earlier point in time without affecting personal files. What should you do?

- A. Restore a system image to the drive.
- B. Restart the computer, press F8, and select Last Known Good Configuration.
- C. Use the System Restore Wizard.
- D. Restart the computer in Safe Mode.

Answer: C

NEW QUESTION 169

- (Exam Topic 2)

Which two tools should you use to gather basic real-time performance information about the computer's system settings? (Choose two.)

- A. System Properties
- B. Task Manager
- C. System Information
- D. Resource Monitor
- E. Computer Management

Answer: BD

NEW QUESTION 174

- (Exam Topic 2)

A Windows 10 library:

- A. Organizes user files from disparate locations.
- B. Encrypts files by using the Encrypting File System (EFS).
- C. Makes copies of user files in a central location.
- D. Restores files from system backup.

Answer: A

Explanation:

References:<https://docs.microsoft.com/en-us/windows/client-management/windows-libraries>

NEW QUESTION 178

.....

Thank You for Trying Our Product

* 100% Pass or Money Back

All our products come with a 90-day Money Back Guarantee.

* One year free update

You can enjoy free update one year. 24x7 online support.

* Trusted by Millions

We currently serve more than 30,000,000 customers.

* Shop Securely

All transactions are protected by VeriSign!

100% Pass Your 98-349 Exam with Our Prep Materials Via below:

<https://www.certleader.com/98-349-dumps.html>