

## 350-201 Dumps

# Performing CyberOps Using Core Security Technologies (CBRCOR)

<https://www.certleader.com/350-201-dumps.html>



### NEW QUESTION 1

A company launched an e-commerce website with multiple points of sale through internal and external e- stores. Customers access the stores from the public website, and employees access the stores from the intranet with an SSO. Which action is needed to comply with PCI standards for hardening the systems?

- A. Mask PAN numbers
- B. Encrypt personal data
- C. Encrypt access
- D. Mask sales details

**Answer: B**

### NEW QUESTION 2

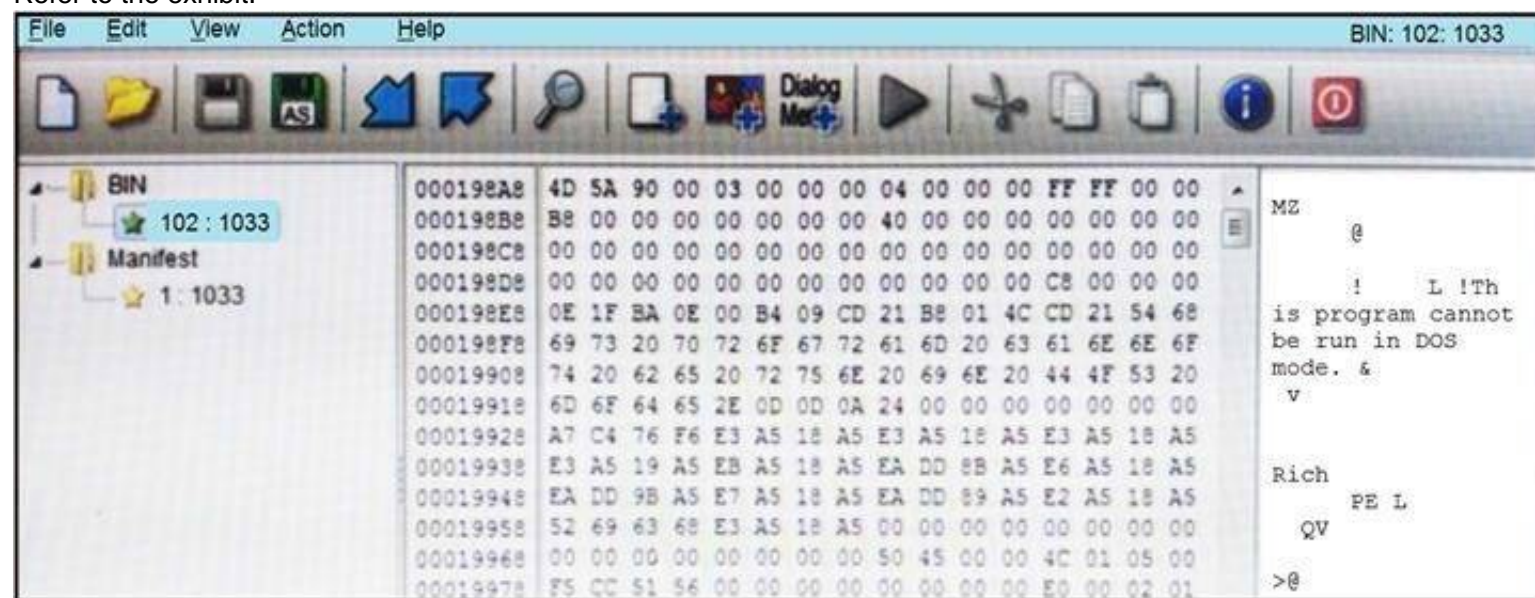
A European-based advertisement company collects tracking information from partner websites and stores it on a local server to provide tailored ads. Which standard must the company follow to safeguard the resting data?

- A. HIPAA
- B. PCI-DSS
- C. Sarbanes-Oxley
- D. GDPR

**Answer: D**

### NEW QUESTION 3

Refer to the exhibit.



An engineer is reverse engineering a suspicious file by examining its resources. What does this file indicate?

- A. a DOS MZ executable format
- B. a MS-DOS executable archive
- C. an archived malware
- D. a Windows executable file

**Answer: D**

### NEW QUESTION 4

An engineer receives an incident ticket with hundreds of intrusion alerts that require investigation. An analysis of the incident log shows that the alerts are from trusted IP addresses and internal devices. The final incident report stated that these alerts were false positives and that no intrusions were detected. What action should be taken to harden the network?

- A. Move the IPS to after the firewall facing the internal network
- B. Move the IPS to before the firewall facing the outside network
- C. Configure the proxy service on the IPS
- D. Configure reverse port forwarding on the IPS

**Answer: C**

### NEW QUESTION 5

Refer to the exhibit.

## Analysis Report

ID	12cbdee21b1ea4	Filename	fpzryrf.exe
OS	7601.1898.amd64fre.win7sp1_gdr.150316-1654	Magic Type	PE32 executable (GUI) Intel 80386, for MS Windows
Started	7/29/16 18:44:43	Analyzed As	exe
Ended	7/29/16 18:50:39	SHA256	e9ca08a3cc2f8c9748a9e9b304c9f5a16d830066e5467d3dd5927be36fec47da
Duration	0:05:56	SHA1	a2de85810fd5ebcf29c5da5dd29ce03470772ad
Sandbox	phl-work-02 (pilot-d)	MD5	dd07d778edf8d581ffaadb1610aaa008

## Warnings

- Executable Failed Integrity Check

## Behavioral Indicators

CTB Locker Detected	Severity: 100	Confidence: 100
Generic Ransomware Detected	Severity: 100	Confidence: 95
Excessive Suspicious Activity Detected	Severity: 90	Confidence: 100
Process Modified a File in a System Directory	Severity: 90	Confidence: 100
Large Amount of High Entropy Artifacts Written	Severity: 100	Confidence: 80
Process Modified a File in the Program Files Directory	Severity: 80	Confidence: 90
Decoy Document Detected	Severity: 70	Confidence: 100
Process Modified an Executable File	Severity: 60	Confidence: 100
Process Modified File in a User Directory	Severity: 70	Confidence: 80
Windows Crash Tool Execution Detected	Severity: 20	Confidence: 80
Hook Procedure Detected in Executable	Severity: 35	Confidence: 40
Ransomware Queried Domain	Severity: 25	Confidence: 25
Executable Imported the IsDebuggerPresent Symbol	Severity: 20	Confidence: 20

Cisco Advanced Malware Protection installed on an end-user desktop has automatically submitted a low prevalence file to the Threat Grid analysis engine for further analysis. What should be concluded from this report?

- A. The prioritized behavioral indicators of compromise do not justify the execution of the “ransomware” because the scores do not indicate the likelihood of malicious ransomware.
- B. The prioritized behavioral indicators of compromise do not justify the execution of the “ransomware” because the scores are high and do not indicate the likelihood of malicious ransomware.
- C. The prioritized behavioral indicators of compromise justify the execution of the “ransomware” because the scores are high and indicate the likelihood that malicious ransomware has been detected.
- D. The prioritized behavioral indicators of compromise justify the execution of the “ransomware” because the scores are low and indicate the likelihood that malicious ransomware has been detected.

Answer: C

### NEW QUESTION 6

An engineer is developing an application that requires frequent updates to close feedback loops and enable teams to quickly apply patches. The team wants their code updates to get to market as often as possible. Which software development approach should be used to accomplish these goals?

- A. continuous delivery
- B. continuous integration
- C. continuous deployment
- D. continuous monitoring

Answer: A

### NEW QUESTION 7

An engineer implemented a SOAR workflow to detect and respond to incorrect login attempts and anomalous user behavior. Since the implementation, the security team has received dozens of false positive alerts and negative feedback from system administrators and privileged users. Several legitimate users were tagged as a threat and their accounts blocked, or credentials reset because of unexpected login times and incorrectly typed credentials. How should the workflow be improved to resolve these issues?

- A. Meet with privileged users to increase awareness and modify the rules for threat tags and anomalous behavior alerts
- B. Change the SOAR configuration flow to remove the automatic remediation that is increasing the false positives and triggering threats
- C. Add a confirmation step through which SOAR informs the affected user and asks them to confirm whether they made the attempts
- D. Increase incorrect login tries and tune anomalous user behavior not to affect privileged accounts

Answer: B

### NEW QUESTION 8

A company's web server availability was breached by a DDoS attack and was offline for 3 hours because it was not deemed a critical asset in the incident response playbook. Leadership has requested a risk assessment of the asset. An analyst conducted the risk assessment using the threat sources, events, and



vulnerabilities. Which additional element is needed to calculate the risk?

- A. assessment scope
- B. event severity and likelihood
- C. incident response playbook
- D. risk model framework

**Answer: D**

#### NEW QUESTION 9

What is the HTTP response code when the REST API information requested by the authenticated user cannot be found?

- A. 401B.-402C.403D.404E.405

**Answer: A**

#### NEW QUESTION 10

A new malware variant is discovered hidden in pirated software that is distributed on the Internet. Executives have asked for an organizational risk assessment. The security officer is given a list of all assets. According to NIST, which two elements are missing to calculate the risk assessment? (Choose two.)

- A. incident response playbooks
- B. asset vulnerability assessment
- C. report of staff members with asset relations
- D. key assets and executives
- E. malware analysis report

**Answer: BE**

#### NEW QUESTION 10

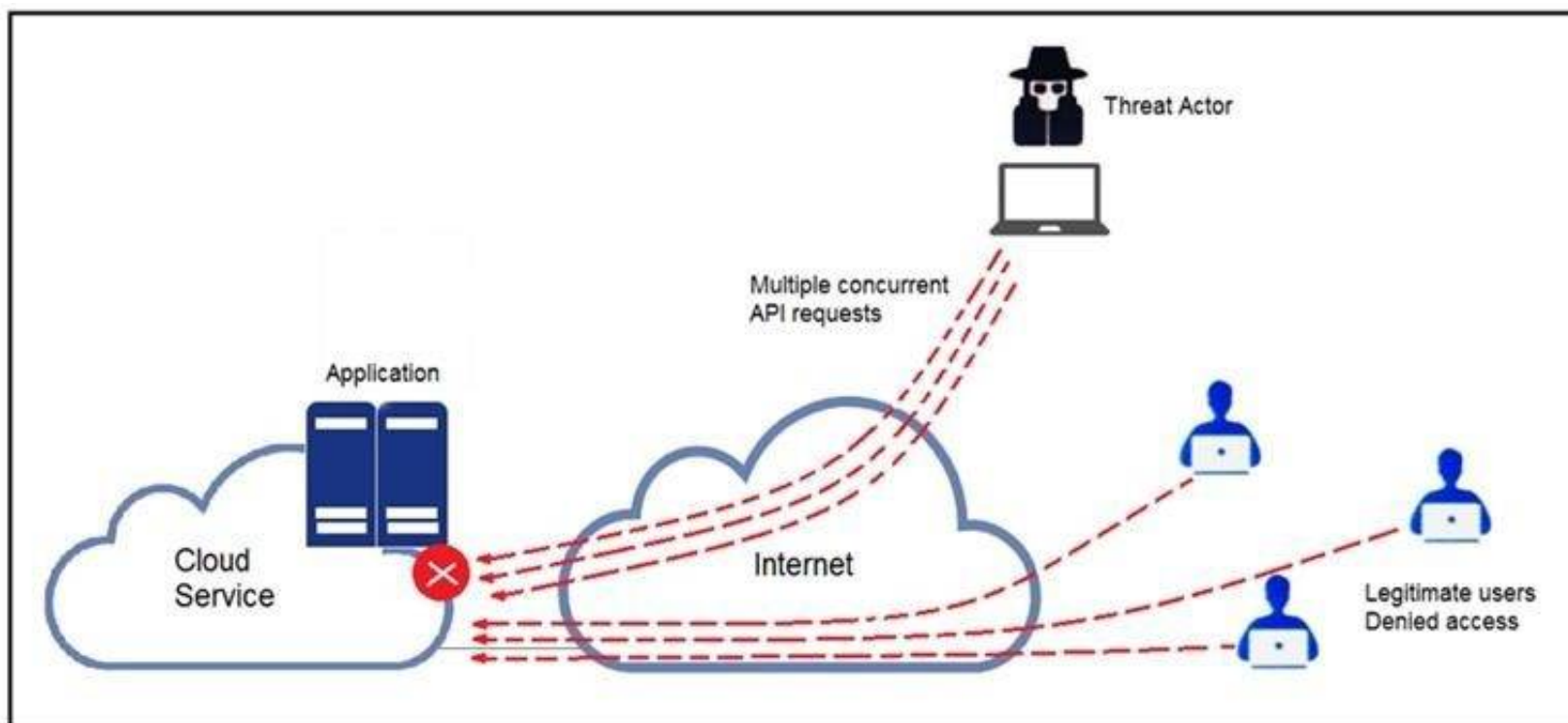
An organization installed a new application server for IP phones. An automated process fetched user credentials from the Active Directory server, and the application will have access to on-premises and cloud services. Which security threat should be mitigated first?

- A. aligning access control policies
- B. exfiltration during data transfer
- C. attack using default accounts
- D. data exposure from backups

**Answer: B**

#### NEW QUESTION 12

Refer to the exhibit.



A threat actor behind a single computer exploited a cloud-based application by sending multiple concurrent API requests. These requests made the application unresponsive. Which solution protects the application from being overloaded and ensures more equitable application access across the end-user community?

- A. Limit the number of API calls that a single client is allowed to make
- B. Add restrictions on the edge router on how often a single client can access the API
- C. Reduce the amount of data that can be fetched from the total pool of active clients that call the API
- D. Increase the application cache of the total pool of active clients that call the API

**Answer: A**

#### NEW QUESTION 13

A security architect is working in a processing center and must implement a DLP solution to detect and prevent any type of copy and paste attempts of sensitive data within unapproved applications and removable devices. Which technical architecture must be used?

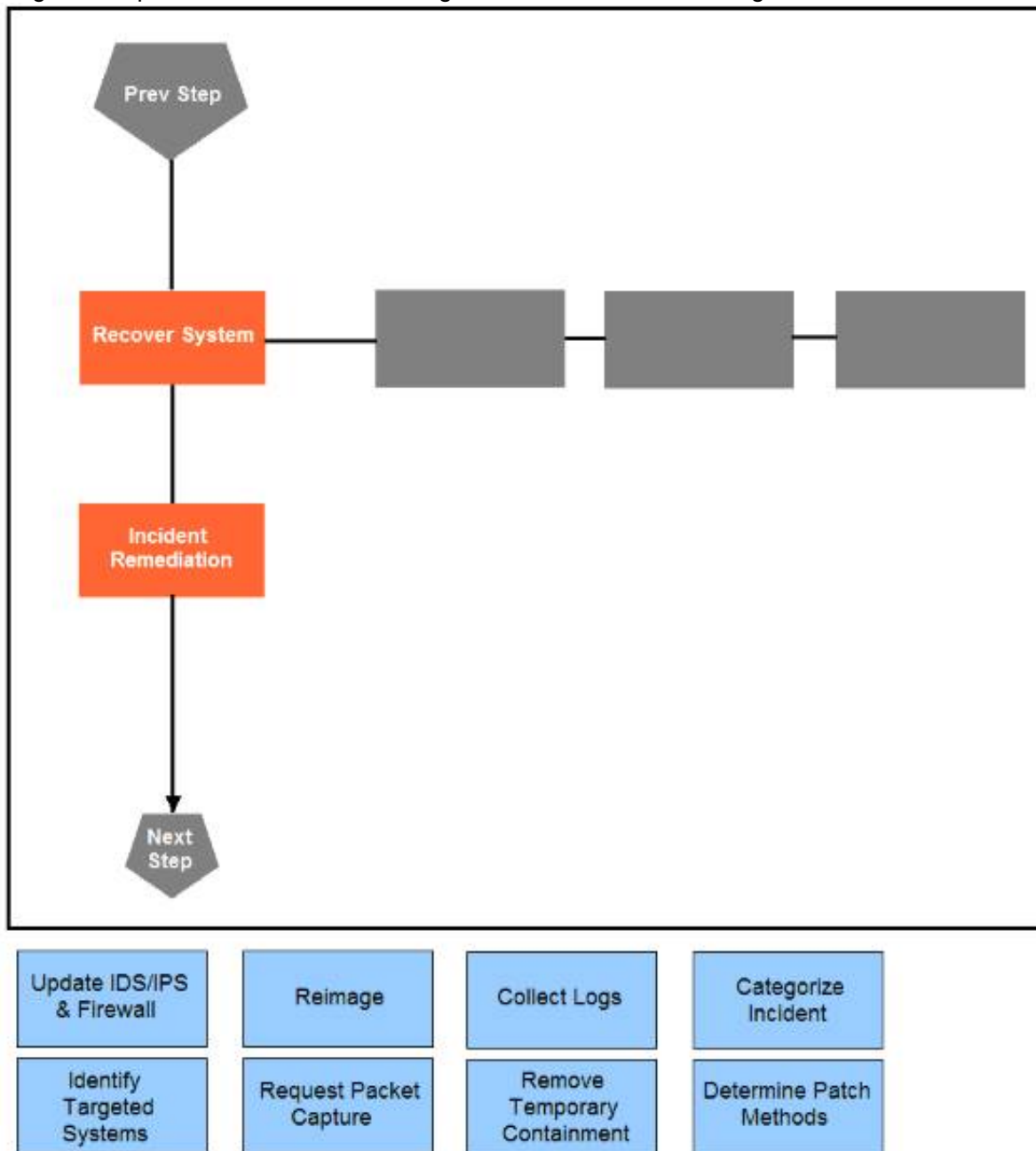
- A. DLP for data in motion

- B. DLP for removable data
- C. DLP for data in use
- D. DLP for data at rest

**Answer:** C

**NEW QUESTION 15**

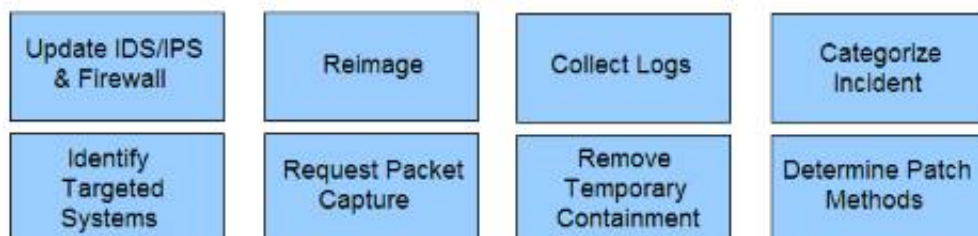
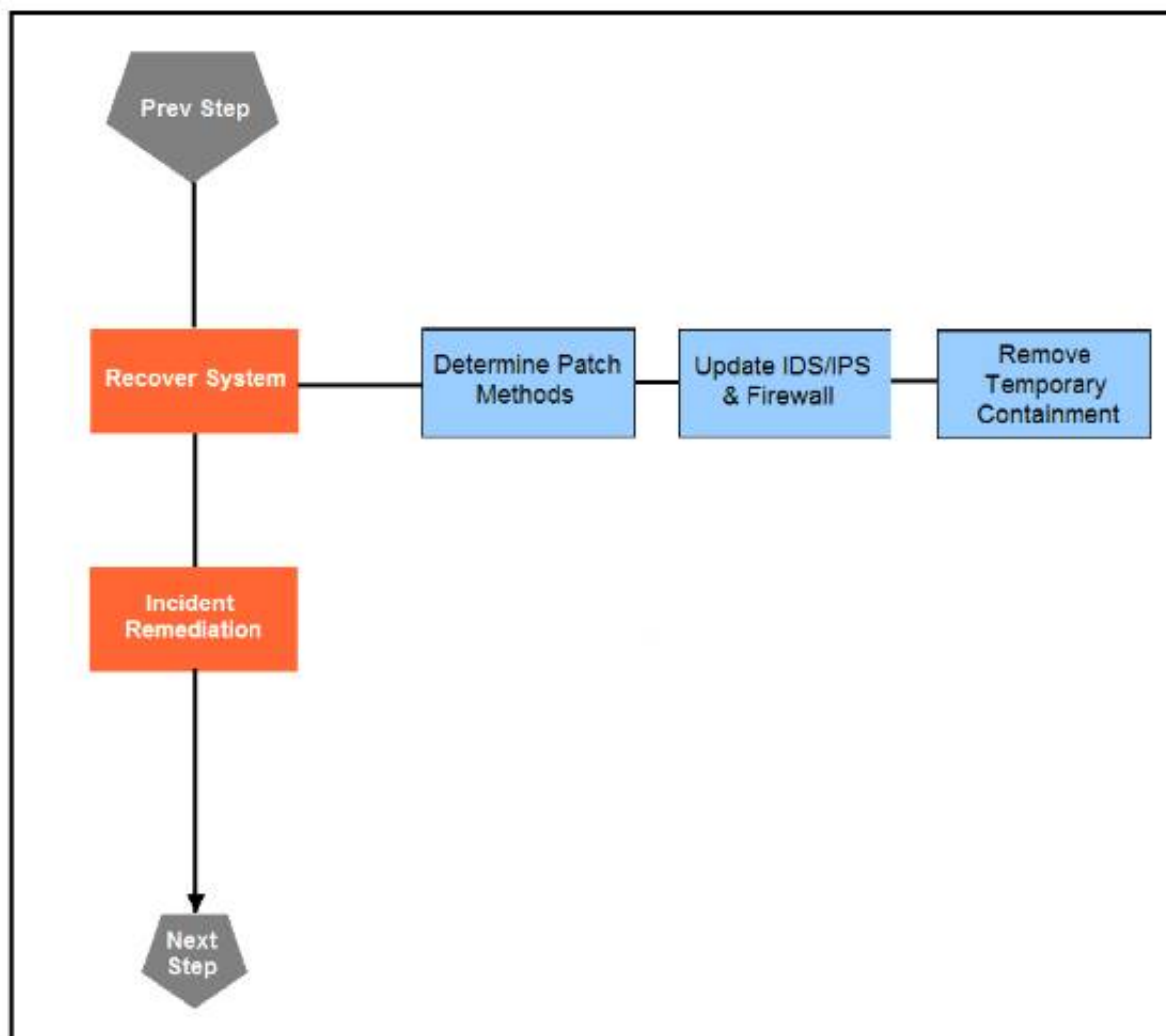
Drag and drop the actions below the image onto the boxes in the image for the actions that should be taken during this playbook step. Not all options are used.



- A. Mastered
- B. Not Mastered

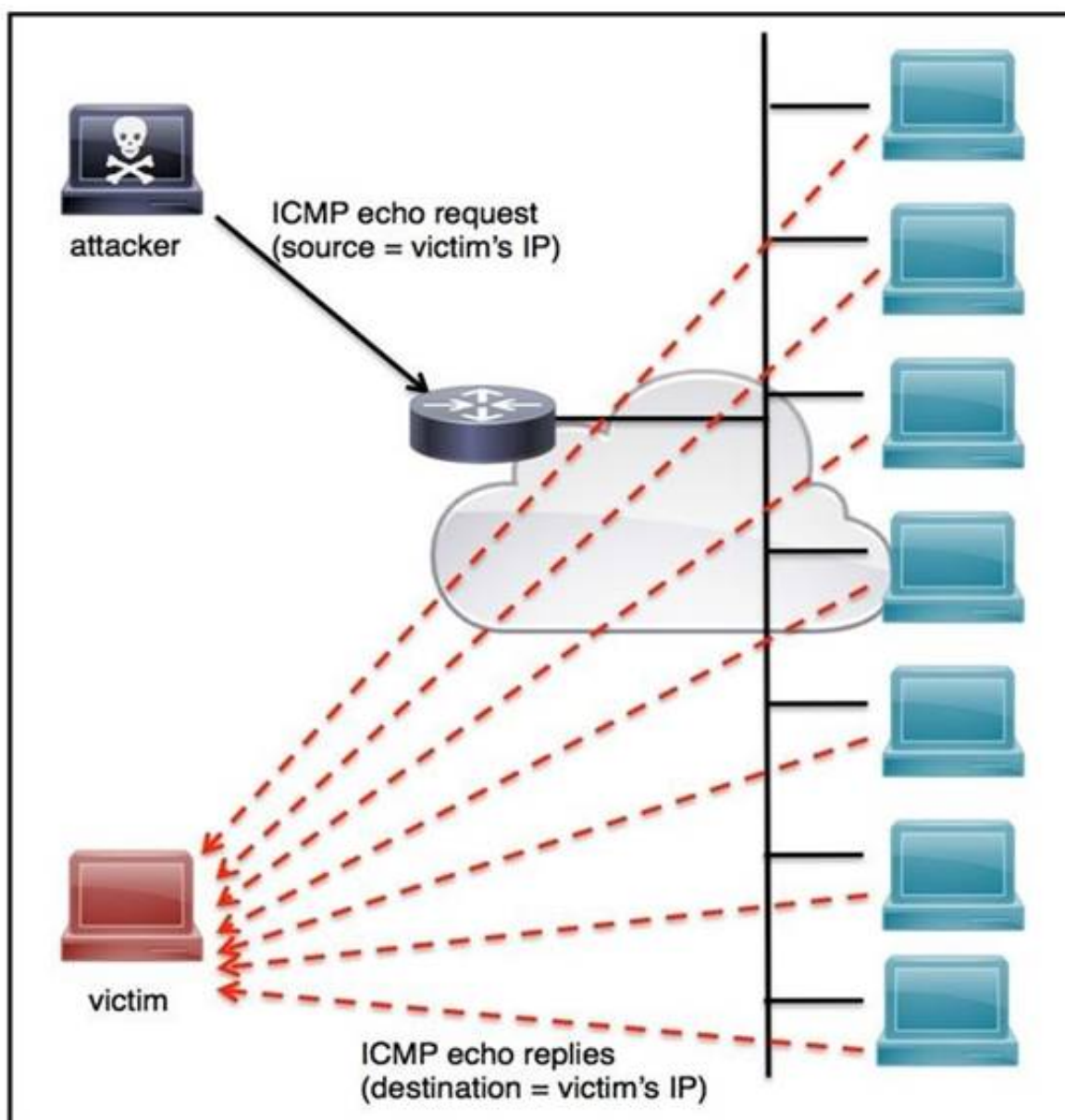
**Answer:** A

**Explanation:**



#### NEW QUESTION 19

Refer to the exhibit.



An engineer must tune the Cisco IOS device to mitigate an attack that is broadcasting a large number of ICMP packets. The attack is sending the victim's spoofed source IP to a network using an IP broadcast address that causes devices in the network to respond back to the source IP address. Which action does the engineer recommend?

A. Use command `ip verify reverse-path interface`

- B. Use global configuration command service tcp-keepalives-out
- C. Use subinterface command no ip directed-broadcast
- D. Use logging trap 6

**Answer:** A

**NEW QUESTION 24**

The incident response team was notified of detected malware. The team identified the infected hosts, removed the malware, restored the functionality and data of infected systems, and planned a company meeting to improve the incident handling capability. Which step was missed according to the NIST incident handling guide?

- A. Contain the malware
- B. Install IPS software
- C. Determine the escalation path
- D. Perform vulnerability assessment

**Answer:** D

**NEW QUESTION 27**

Drag and drop the mitigation steps from the left onto the vulnerabilities they mitigate on the right.

**Answer Area**

Restrict administrative access to operating systems and applications in accordance with job duties	End-user desktops allow the execution of non-approved applications that include malicious code
Use multifactor authentication for remote access or accessing sensitive information	Application security vulnerabilities can be used to execute malicious code
Change backup and store software and configuration settings for at least three months	Privilege accounts have full rights to information systems
Patch applications including flash, web browsers, and PDF viewers	User verification is weak and based on a single factor
Utilize application control to stop malware delivery and execution	Data or access loss occurs due to cybersecurity incidents

- A. Mastered
- B. Not Mastered

**Answer:** A

**Explanation:**



Answer Area

Restrict administrative access to operating systems and applications in accordance with job duties	Utilize application control to stop malware delivery and execution
Use multifactor authentication for remote access or accessing sensitive information	Patch applications including flash, web browsers, and PDF viewers
Change backup and store software and configuration settings for at least three months	Restrict administrative access to operating systems and applications in accordance with job duties
Patch applications including flash, web browsers, and PDF viewers	Use multifactor authentication for remote access or accessing sensitive information
Utilize application control to stop malware delivery and execution	Change backup and store software and configuration settings for at least three months

NEW QUESTION 30

Drag and drop the phases to evaluate the security posture of an asset from the left onto the activity that happens during the phases on the right.

Answer Area

vulnerability assessment	gathering information on a target for future use
persistence	probing the target to discover operating system details
exploit	confirming the existence of known vulnerabilities in the target system
cover tracks	using previously identified vulnerabilities to gain access to the target system
reconnaissance	inserting backdoor access or covert channels to ensure access to the target system
enumeration	erasing traces of actions in audit logs and registry entries

- A. Mastered
- B. Not Mastered

Answer: A

Explanation:



## Answer Area

vulnerability assessment	persistence
persistence	reconnaissance
exploit	vulnerability assessment
cover tracks	exploit
reconnaissance	enumeration
enumeration	cover tracks

### NEW QUESTION 32

The incident response team receives information about the abnormal behavior of a host. A malicious file is found being executed from an external USB flash drive. The team collects and documents all the necessary evidence from the computing resource. What is the next step?

- A. Conduct a risk assessment of systems and applications
- B. Isolate the infected host from the rest of the subnet
- C. Install malware prevention software on the host
- D. Analyze network traffic on the host's subnet

**Answer:** B

### NEW QUESTION 34

A patient views information that is not theirs when they sign in to the hospital's online portal. The patient calls the support center at the hospital but continues to be put on hold because other patients are experiencing the same issue. An incident has been declared, and an engineer is now on the incident bridge as the CyberOps Tier 3 Analyst. There is a concern about the disclosure of PII occurring in real-time. What is the first step the analyst should take to address this incident?

- A. Evaluate visibility tools to determine if external access resulted in tampering
- B. Contact the third-party handling provider to respond to the incident as critical
- C. Turn off all access to the patient portal to secure patient records
- D. Review system and application logs to identify errors in the portal code

**Answer:** C

### NEW QUESTION 35

Refer to the exhibit.

Max (K)	Retain	OverflowAction	Entries	Log
15,168	0	OverwriteAsNeeded	20,792	Application
15,168	0	OverwriteAsNeeded	12,559	System
15,360	0	OverwriteAsNeeded	11,173	Windows PowerShell

Which command was executed in PowerShell to generate this log?

- A. Get-EventLog -LogName\*
- B. Get-EventLog -List
- C. Get-WinEvent -ListLog\* -ComputerName localhost
- D. Get-WinEvent -ListLog\*

**Answer:** A

### NEW QUESTION 39

A Mac laptop user notices that several files have disappeared from their laptop documents folder. While looking for the files, the user notices that the browser history was recently cleared. The user raises a case, and an analyst reviews the network usage and discovers that it is abnormally high. Which step should be taken to continue the investigation?

- A. Run the sudo sysdiagnose command
- B. Run the sh command
- C. Run the w command
- D. Run the who command

Answer: A

**NEW QUESTION 42**

A SOC team is informed that a UK-based user will be traveling between three countries over the next 60 days. Having the names of the 3 destination countries and the user's working hours, what must the analyst do next to detect an abnormal behavior?

- A. Create a rule triggered by 3 failed VPN connection attempts in an 8-hour period
- B. Create a rule triggered by 1 successful VPN connection from any nondestination country
- C. Create a rule triggered by multiple successful VPN connections from the destination countries
- D. Analyze the logs from all countries related to this user during the traveling period

Answer: D

**NEW QUESTION 45**

Drag and drop the components from the left onto the phases of the CI/CD pipeline on the right.

**Answer Area**

build	Phase 1
release	Phase 2
deploy	Phase 3
operate	Phase 4
monitor	Phase 5
test	Phase 6
plan	Phase 7
develop	Phase 8

- A. Mastered
- B. Not Mastered

Answer: A

Explanation:

**Answer Area**

build	plan
release	develop
deploy	build
operate	test
monitor	release
test	deploy
plan	operate
develop	monitor

**NEW QUESTION 46**

An engineer is analyzing a possible compromise that happened a week ago when the company ? (Choose two.)

- A. firewall
- B. Wireshark
- C. autopsy
- D. SHA512
- E. IPS

**Answer:** AB

**NEW QUESTION 50**

.....



## Thank You for Trying Our Product

\* 100% Pass or Money Back

All our products come with a 90-day Money Back Guarantee.

\* One year free update

You can enjoy free update one year. 24x7 online support.

\* Trusted by Millions

We currently serve more than 30,000,000 customers.

\* Shop Securely

All transactions are protected by VeriSign!

**100% Pass Your 350-201 Exam with Our Prep Materials Via below:**

<https://www.certleader.com/350-201-dumps.html>