

JN0-681 Dumps

Data Center - Professional (JNCIP-DC)

<https://www.certleader.com/JN0-681-dumps.html>



NEW QUESTION 1

You are implementing perimeter security for your data center. You need to inspect all traffic Layer 7 and ensure the failure of a port or device will not result in an interruption to traffic flows.

In this scenario, which design would satisfy these requirements?

- A. MX with MC LAG
- B. QFX Virtual Chassis
- C. SRX Chassis cluster
- D. SRX using LAG

Answer: C

NEW QUESTION 2

Which protocol replicates forwarding information between MC-LAG peers?

- A. VCCP
- B. ICCP
- C. VRRP
- D. LLDP

Answer: B

NEW QUESTION 3

After configuring an IP fabric using EBGP as your protocol, you notice that not all of the routers are showing up in the routing tables. You have verified that all adjacencies have formed, and are configured properly.

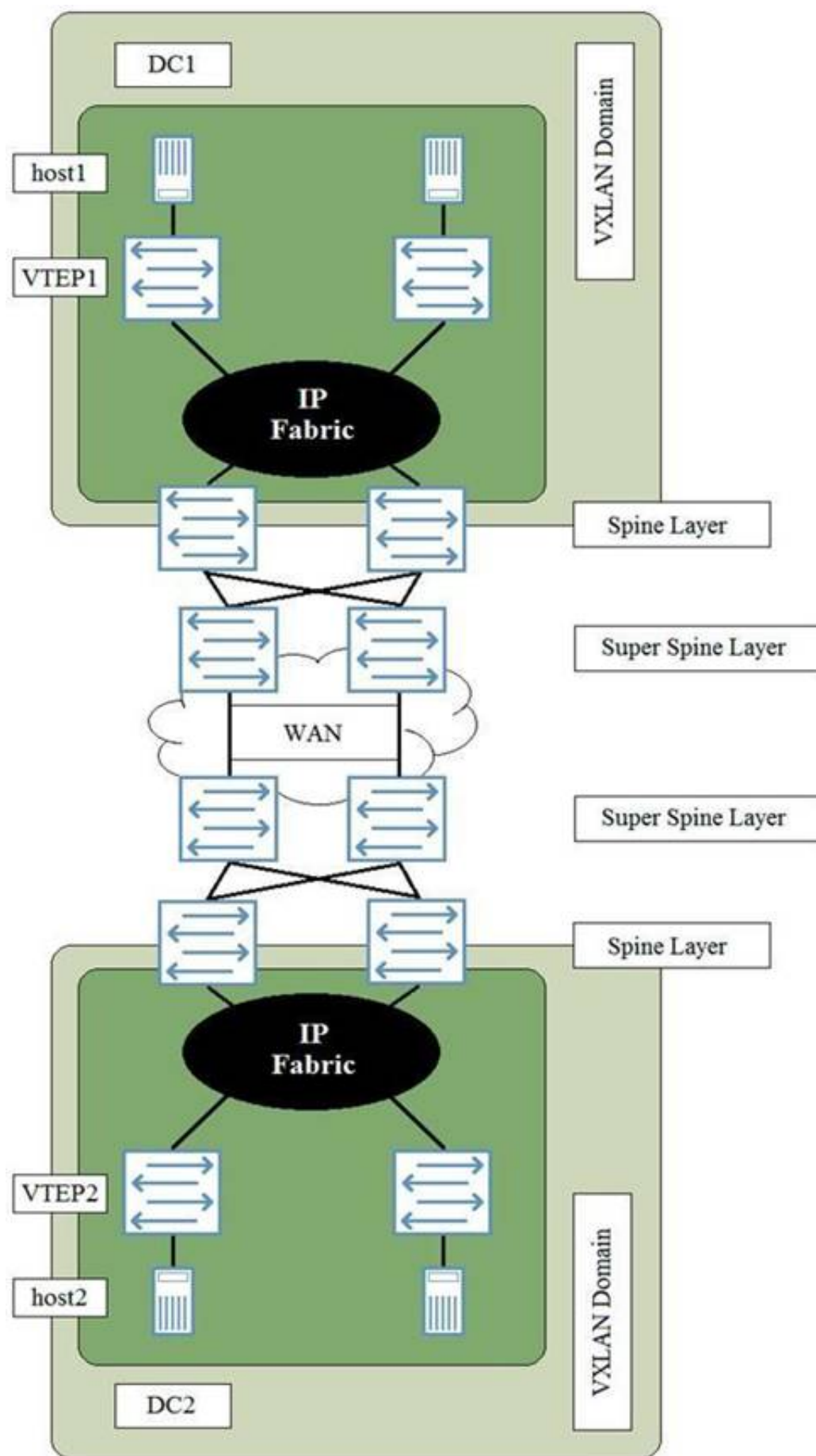
In this scenario, which statement is true?

- A. The routers have not been configured with the multipath multiple-as parameter.
- B. The routers have not been configured using the bfd-1 Liveness-detection parameter.
- C. The routers have not been configured using the multihop parameter.
- D. The routers have not been configured using the add-path parameter

Answer: A

NEW QUESTION 4

You have deployed two data centers that require a Layer 2 stretch between host1 and host2.



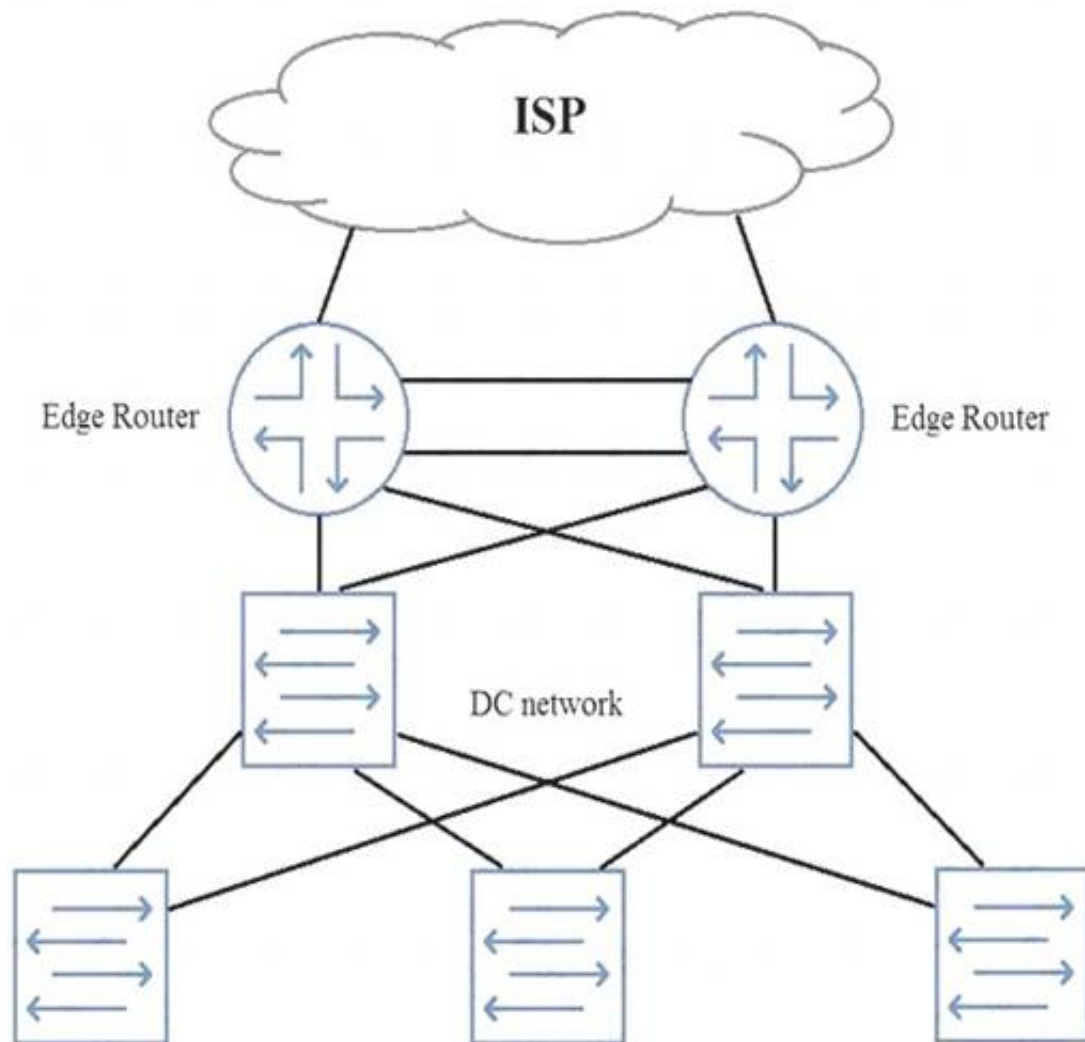
Referring to the exhibit, what does a Layer 2 stretch require?

- A. A VPLS WAN connection data centers
- B. A VXLAN tunnel originating on VTEP1 to VTEP2
- C. A VXLAN tunnel originating on the super Spine Layer in DC1 to the Super Spine Layer in DC2
- D. A VXLAN tunnel originating on the Spine Layer in DC1 to the Spine Layer in DC2.

Answer: B

NEW QUESTION 5

You need to add perimeter security to the network shown in the exhibit. All traffic must be inspected for attacks. The edge routers are using all available ports. Your solution must maintain both port and device resiliency.



In this scenario, which design would satisfy these requirements?

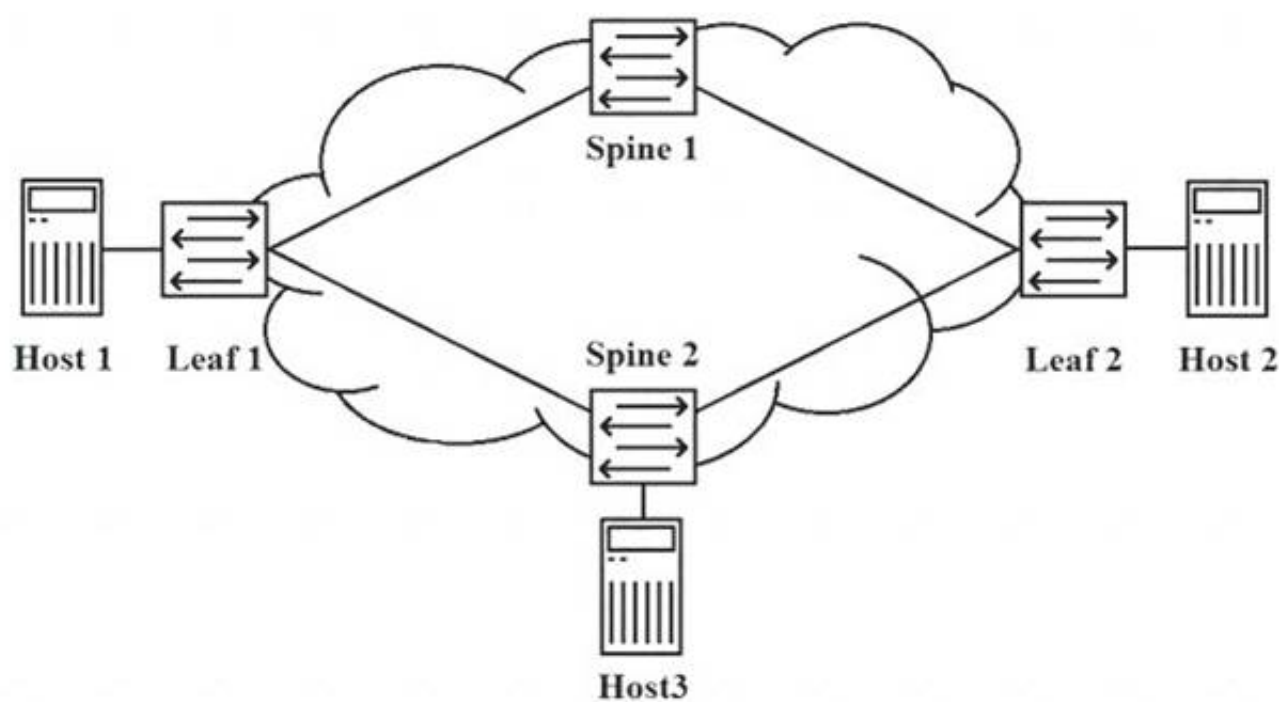
- A. one-arm SRX Series chassis cluster
- B. one-arm SRX Series device using LAG
- C. inline SRX Series chassis cluster
- D. inline SRX Series device using LAG

Answer: C

NEW QUESTION 6

Referring to the exhibit, Host 1 and Host 3 have exchanged traffic.

IP Fabric EVPN-VXLAN Overlay



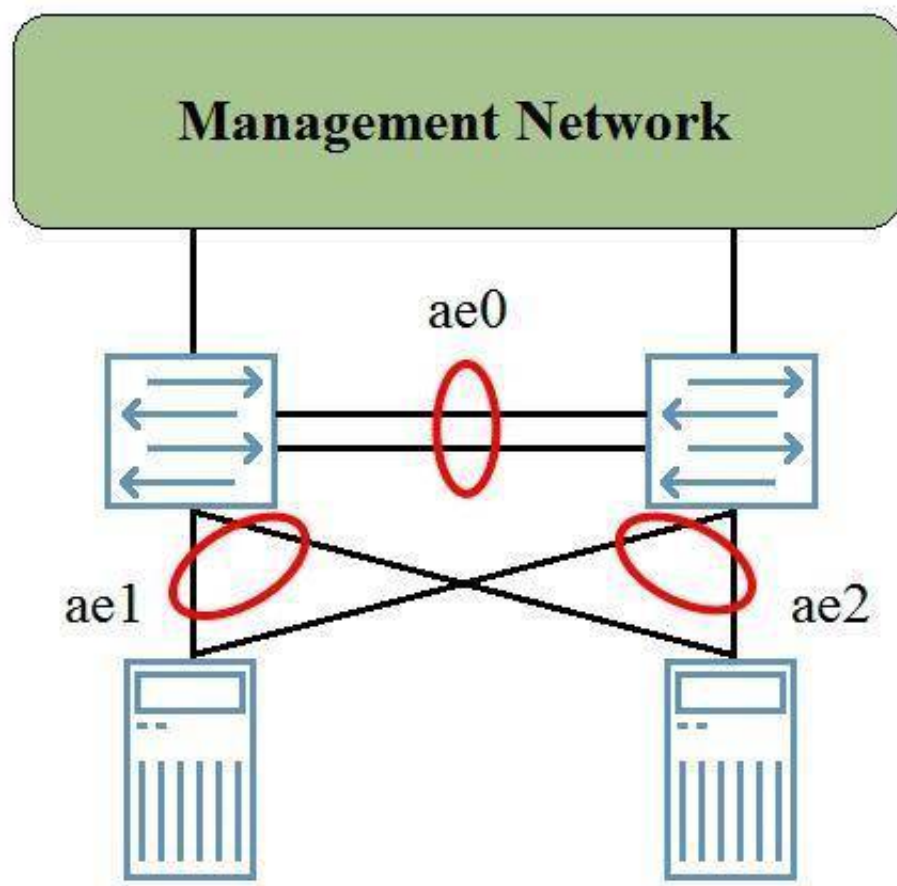
In this scenario, which statement is true?

- A. Leaf 2 learn Host 1's MAC address through periodic updates from Spine 2
- B. Leaf 2 learn Host 1's MAC address when Host 3 learns Host 1's MAC address.
- C. Leaf 2 learn Host 1's MAC address when Leaf 1 queries Host 1.
- D. Leaf 2 does not learn Host 1's MAC address until Host1 and Host2 send traffic to each other

Answer: B

NEW QUESTION 7

The MC-LAG group shown in the exhibit is providing high availability services for the directly connected servers. The backup liveness detection is applied to the ICL-PL link, however, when one of the members rebooted, there was traffic loss for a few seconds.



In this scenario, where should you apply the backup liveness detection?

- A. On the management interfaces
- B. On the ae2 interface
- C. On the ae1 interface
- D. On the ae0 interface

Answer: A

NEW QUESTION 8

Which two statements describes an IP fabric? (Choose two.)

- A. Each leaf should have a connection to each spine.
- B. Open standards allow for vendor interoperability.
- C. Traffic should always follow a single path
- D. xSTP protocols should be used to prevent loops

Answer: AB

NEW QUESTION 9

Which two statements describe a VXLAN network identifier (VNI)? (Choose Two)

- A. A VNI identifies the inner MAC frame.
- B. A VNI identifies a VXLAN segment ID.
- C. A VNI allows only 512 VLANs.
- D. A VNI validates the remote VTEP.

Answer: BD

NEW QUESTION 10

Which EVPN router type prevents BUM traffic from looping back to a multihomed host?

- A. Ethernet segment router
- B. IP prefix route
- C. Ether auto discovery route
- D. Inclusive multicast-Ethernet tag route

Answer: C

NEW QUESTION 10

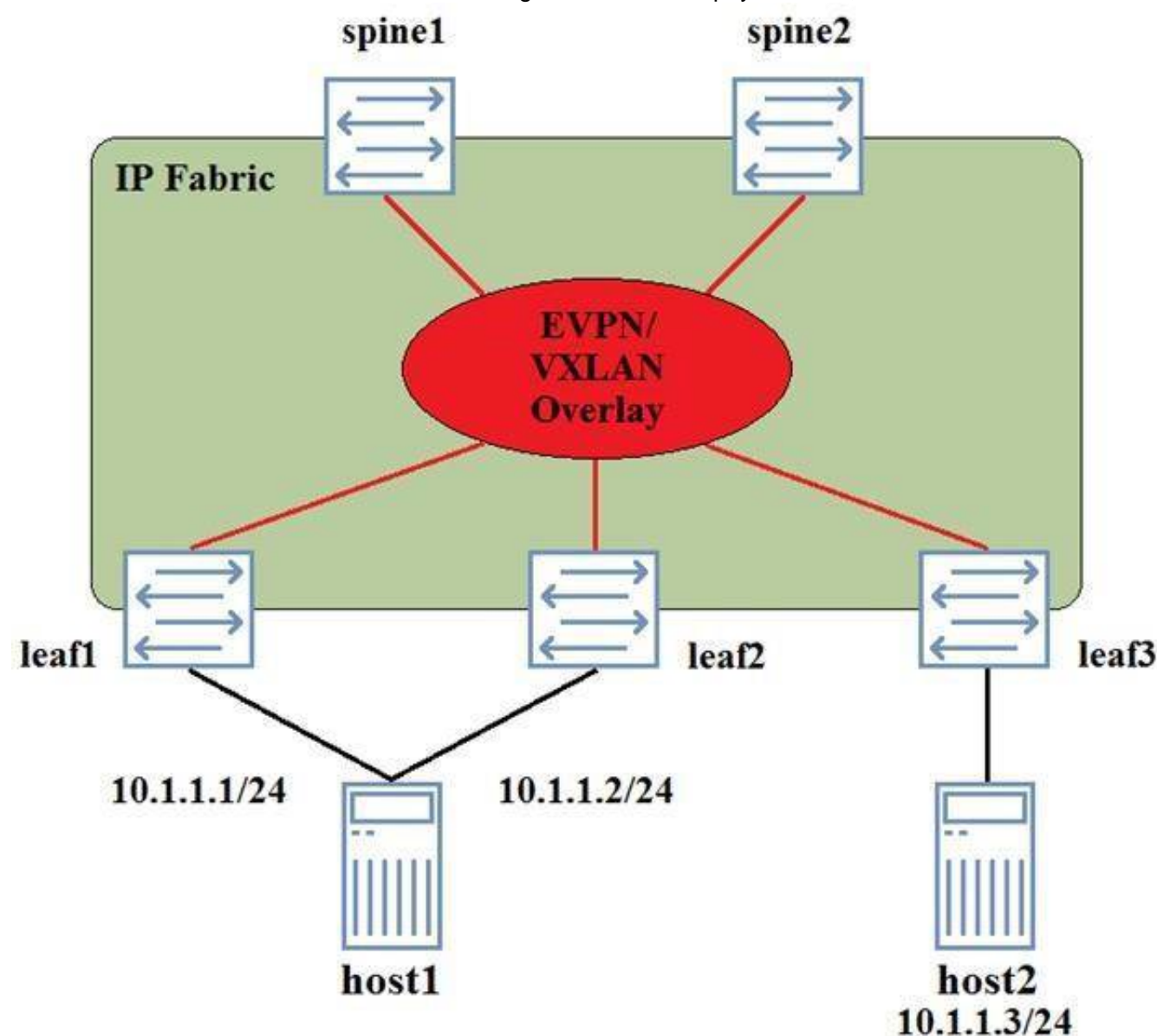
You are building a new IP fabric data center underlay network and want to ensure predicted load-balancing behavior for traffic, traversing the fabric. What are two approaches you should take to satisfy the requirement in this scenario? (Choose two.)

- A. Ensure that all spine devices are the same switched mode.
- B. Ensure that all uplinks are 40GbE.
- C. Ensure that every leaf node has an uplink spine node
- D. Ensure that every node has a link to every other leaf node

Answer: AC

NEW QUESTION 14

An EVPN-signaled VXLAN overlay has been deployed in the network shown in the exhibit. Host1 is a bare metal server, and is dual-homed to the network. The IP addresses 10.1.1.1/24 and 10.1.1.2/24 are assigned to the same physical NIC, and no virtualization is configured on the server.



In this scenario, which two statements are true? (Choose two.)

- A. The MAC address associated with 10.1.1.1/24 and 10.1.1.2/24 will be same when advertised to leaf3.
- B. Traffic from IP address 10.1.1.1/24 must traverse the VXLAN network to reach IP address 10.1.1.2/24
- C. The connection host1 to devices leaf1 and leaf2 must be configuration a LAG.
- D. The ESI assigned to the host1 link must be the as the ESI assigned to the leaf2 host1 link.

Answer: CD

NEW QUESTION 15

You are configuring an EVPN overlay network. You want to ensure that leaf devices can respond to ARP requests from locally connected hosts, when the leaf device knows the MAC of the intended destination.

In this scenario, what should you configure on the leaf devices to accomplish this task?

- A. Proxy ARP
- B. Static ARP entries
- C. Persistent MAC learning
- D. IGMP snooping

Answer: A

NEW QUESTION 17

You work in a data center where VMs and hosts are frequently moved. Your design needs to eliminate inefficient traffic flows.

In this scenario, which two solutions will satisfy this requirement? (Choose two.)

- A. VXLAN
- B. EVPN
- C. VMTO
- D. VPLS

Answer: BC

NEW QUESTION 22

What is the purpose of the command shown in the exhibit?

```
[edit protocols 12-learning]
user@switch# show
disable-vxlan-multicast-transit {
    vxlan-multicast-group 239.0.0.1;
}
```

- A. To stop the reception of transit multicast traffic when there are no interested receives attached to the local VTEP
- B. To disable the group 2390.0.1 across the entire VXLAN.
- C. To stop the transmission of transit multicast traffic when there are no interested receives attached to a remote VTEP
- D. To disallow IGMP request for the group 239.0.01 from host attached to the local VTEP

Answer: C

NEW QUESTION 25

What are three advantages of using MPLS for data center interconnects? (Choose two.)

- A. Dedicated MPLS backbones for Layer 1 and Layer 3 DCIs
- B. Any to any connectivity
- C. Dedicated connections between customer sites
- D. Sub 50 ms failover times
- E. Traffic engineering

Answer: ADE

NEW QUESTION 28

You are asked to deploy 20 QFX Series devices using ZTP. Each QFX5100 requires a TFTP server. In this scenario, which two components must you configure on the DHCP Server? (Choose two.)

- A. The MAC address of the TFTP server
- B. The IP address of the TFTP server
- C. The MAC address of each QFX5100
- D. The MAC address of each TFTP QFX5100

Answer: AB

NEW QUESTION 31

You are designing a network for a small data center.

In this scenario, which underlay protocol allows for the simplest implementation?

- A. EIGRP
- B. OSPF
- C. IGMP
- D. MPLS

Answer: B

NEW QUESTION 35

Your manager asks you to secure ARP and DHCP traffic across your local Ethernet links. In this scenario, which technology will accomplish this task?

- A. SSL
- B. MACsec
- C. IPsec
- D. A firewall filter

Answer: B

NEW QUESTION 38

What is the endpoint of a VXLAN tunnel?

- A. DLCI
- B. VTEP
- C. LSR
- D. VCF

Answer: B

NEW QUESTION 40

You are configuring an IP Fabric in your data center and you are trying to load-balance traffic across multiple equal-cost BGP routes. You have enabled multipath, but the traffic is not being load-balanced.

```
user@switch> show route 10.1.2.0/24

inet.0: 11 destinations, 13 routes (11 active,
holddown, 0 hidden)
+ = Active Route, - = Last Active, * = Both

10.1.2.0/24          *[BGP/170] 01:21:05,
localpref 100
                    AS path: 64516 I,
validation-state: unverified
                    to 172.16.3.1 via ge-
0/0/1.0
                    > to 172.16.5.1 via ge-
0/0/2.0
                    [BGP/170] 01:09:08,
localpref 100
                    AS path: 64515 I,
validation-state: unverified
                    > to 172.16.3.1 via ge-
0/0/1.0

user@switch> show route forwarding-table
destination 10.1.2.0/24
Routing table: default.inet
Internet:
Destination          Type RtRef Next hop
                    Type Index   NhRef Netif
10.1.2.0/24          user    0 172.16.5.1
                    ucst    574  4 ge-0/0/2.0
...

user@switch> show configuration policy-options
policy-statement load-balance {
    term lb {
        then {
            load-balance per-packet;
            accept;
        }
    }
}
```

Referring to the exhibit, what will solve this problem?

- A. You should apply load-balance policy as an import policy to the forwarding table
- B. You should apply the load-balance policy as an export policy to the forwarding table
- C. You should apply the load-balance policy as an export policy to the BGP neighbor
- D. You should apply the load-balance policy as an export policy for the BGP neighbor

Answer: B

NEW QUESTION 44

You are creating a new EVPN and are asked to selectively accept certain MAC advertisement routers from your EVPN peers using VXLAN Encapsulation. Which statements is correct in this scenario?

- A. You can use VRF policies and route distinguisher values to filter out unwanted routes.
- B. You can use VBRF import policies and community values to filter out unwanted routes.
- C. You can use MAC filtering to filter out unwanted routes.
- D. You can use firewall filters to filters out unwanted routes

Answer: B

NEW QUESTION 45

.....

Thank You for Trying Our Product

* 100% Pass or Money Back

All our products come with a 90-day Money Back Guarantee.

* One year free update

You can enjoy free update one year. 24x7 online support.

* Trusted by Millions

We currently serve more than 30,000,000 customers.

* Shop Securely

All transactions are protected by VeriSign!

100% Pass Your JN0-681 Exam with Our Prep Materials Via below:

<https://www.certleader.com/JN0-681-dumps.html>