

98-361 Dumps

Microsoft MTA Software Development Fundamentals

<https://www.certleader.com/98-361-dumps.html>



NEW QUESTION 1

- (Topic 1)

You are creating an application that presents users with a graphical interface in which they can enter data. The application must run on computers that do not have network connectivity.

Which type of application should you choose?

- A. Console-based
- B. Windows Forms
- C. Windows Service
- D. ClickOnce

Answer: B

Explanation:

Use Windows Forms when a GUI is needed.

NEW QUESTION 2

- (Topic 1)

You are writing a Web application that processes room reservation requests. You need to verify that the room that a guest has selected is not already reserved by another guest.

Which type of programming should you use to determine whether the room is still available when the request is made?

- A. client-side
- B. server-side
- C. multithreaded
- D. batch processing

Answer: B

Explanation:

For room availability we need to check a database located on a server.

NEW QUESTION 3

- (Topic 1)

You are creating a routine that will perform calculations by using a repetition structure. You need to ensure that the entire loop executes at least once.

Which looping structure should you use?

- A. For
- B. While
- C. Do„While
- D. Fo
- E. „Each

Answer: :C

Explanation:

In a Do..While loop the test is at the end of the structure, so it will be executed at least once.

NEW QUESTION 4

HOTSPOT - (Topic 1)

You are reviewing the following code that saves uploaded images.

```
struct ImageInfo
{
    public byte[] Data;
    public int Length;
    public Guid Id;
}

void Post()
{
    var uploaded = PostedImage();
    var newImage = new ImageInfo();
    newImage.Data = uploaded;
    newImage.Length = uploaded.Length;
    newImage.Id = Guid.NewGuid();
}
```

For each of the following statements, select Yes if the statement is true. Otherwise, select No. Each correct selection is worth one point.

Answer Area

Description of Behavior	Yes	No
The bytes that comprise the image are stored on the stack	<input type="radio"/>	<input type="radio"/>
The length of the image data is stored on the heap.	<input type="radio"/>	<input type="radio"/>
The Id of the image is stored on the stack.	<input type="radio"/>	<input type="radio"/>

- A. Mastered
- B. Not Mastered

Answer: A

Explanation:

Answer Area

Description of Behavior	Yes	No
The bytes that comprise the image are stored on the stack	<input type="radio"/>	<input checked="" type="radio"/>
The length of the image data is stored on the heap.	<input type="radio"/>	<input checked="" type="radio"/>
The Id of the image is stored on the stack.	<input checked="" type="radio"/>	<input type="radio"/>

NEW QUESTION 5

- (Topic 1)
A data warehouse database is designed to:

- A. Enable business decisions by collecting, consolidating, and organizing data.
- B. Support a large number of concurrent users.
- C. Support real-time business operations.
- D. Require validation of incoming data during real-time business transactions.

Answer: A

NEW QUESTION 6

HOTSPOT - (Topic 1)
For each of the following statements, select Yes if the statement is true. Otherwise, select No. Each correct selection is worth one point.

Answer Area

Statement	Yes	No
Within an XHTML document, the XHTML DOCTYPE declaration is mandatory.	<input type="radio"/>	<input type="radio"/>
Within an XHTML document, the XML namespace attribute in the html tag is mandatory.	<input type="radio"/>	<input type="radio"/>
Within an XHTML document, the html, head, title, and body tags are mandatory.	<input type="radio"/>	<input type="radio"/>

- A. Mastered
- B. Not Mastered

Answer: A

Explanation:

Answer Area

Statement	Yes	No
Within an XHTML document, the XHTML DOCTYPE declaration is mandatory.	<input checked="" type="radio"/>	<input type="radio"/>
Within an XHTML document, the XML namespace attribute in the html tag is mandatory.	<input checked="" type="radio"/>	<input type="radio"/>
Within an XHTML document, the html, head, title, and body tags are mandatory.	<input checked="" type="radio"/>	<input type="radio"/>

NEW QUESTION 7

- (Topic 1)

You are creating an application for a help desk center. Calls must be handled in the same order in which they were received. Which data structure should you use?

- A. Binary tree
- B. Stack
- C. Hashtable
- D. Queue

Answer: D

Explanation:

A queue keeps the order of the items.

NEW QUESTION 8

- (Topic 1)

You have a class with a property.

You need to ensure that consumers of the class can write to the value of the property. Which keyword should you use?

- A. value
- B. add
- C. get
- D. set

Answer: D

Explanation:

Set:

The set { } implementation receives the implicit argument "value." This is the value to which the property is assigned.

* Property. On a class, a property gets and sets values. A simplified syntax form, properties are implemented in the IL as methods (get, set).

NEW QUESTION 9

- (Topic 1)

You are developing a webpage that enables students to manage races.

The webpage will display two lists: past races and upcoming races. The page also contains a sidebar with contact information and a panel with social media settings that can be edited. Race results can be shared on social media.

How many components will be on the webpage?

- A. 2
- B. 3
- C. 4
- D. 5

Answer: C

NEW QUESTION 10

- (Topic 1)

You are creating a database for a student directory. The Students table contains the following fields:

```
firstName  
lastName  
emailAddress  
telephoneNumber
```

Which statement will retrieve only the first name, last name, and telephone number for every student listed in the directory?

- A. WHERE Students SELECT *
- B. SELECT firstName, lastName, telephoneNumber FROM Students
- C. SELECT firstName, lastName, telephoneNumber IN Students
- D. SELECT * FROM Students
- E. WHERE Students SELECT firstName, lastName, telephoneNumber

Answer: B

Explanation:

Use SELECT??FROM and list the fields you want to retrieve.

NEW QUESTION 10

- (Topic 1)

You have a website that includes a form for username and password.

You need to ensure that users enter their username and password. The validation must work in all browsers.

Where should you put the validation control?

- A. in both the client-side code and the server-side code
- B. in the client-side code only
- C. in the Web.config file
- D. in the server-side code only

Answer: A

Explanation:

From version 2.0 on, ASP.NET recognized the JavaScript capabilities of these browsers, so client-side validation is now available to all modern browsers, including Opera, Firefox, and others. Support is even better now in ASP.NET 4.0. That said, it??s important not to forget that JavaScript can be disabled in any browser, so client-side validation cannot be relied upon??we must always validate any submitted data on the server.

NEW QUESTION 15

HOTSPOT - (Topic 1)

For each of the following statements, select Yes if the statement is true. Otherwise, select No. Each correct selection is worth one point.

Answer Area

Test Behavior

Yes

No

The primary goal of unit testing is to take the smallest piece of testable software in the application, isolate it from the remainder of the code, and determine whether it behaves exactly as expected.

☐☐

In unit testing, each unit is tested separately before integrating the units into modules to test the interfaces between modules.

☐☐

The driver that you use in unit testing simulates a calling unit and the stub simulates a called unit.

☐☐

- A. Mastered
- B. Not Mastered

Answer: A

Explanation:

Answer Area

Test Behavior

Yes

No

The primary goal of unit testing is to take the smallest piece of testable software in the application, isolate it from the remainder of the code, and determine whether it behaves exactly as expected.

☒☐

In unit testing, each unit is tested separately before integrating the units into modules to test the interfaces between modules.

☒☐

The driver that you use in unit testing simulates a calling unit and the stub simulates a called unit.

☒☐

NEW QUESTION 19

- (Topic 1)

Simulating the final design of an application in order to ensure that the development is progressing as expected is referred to as:

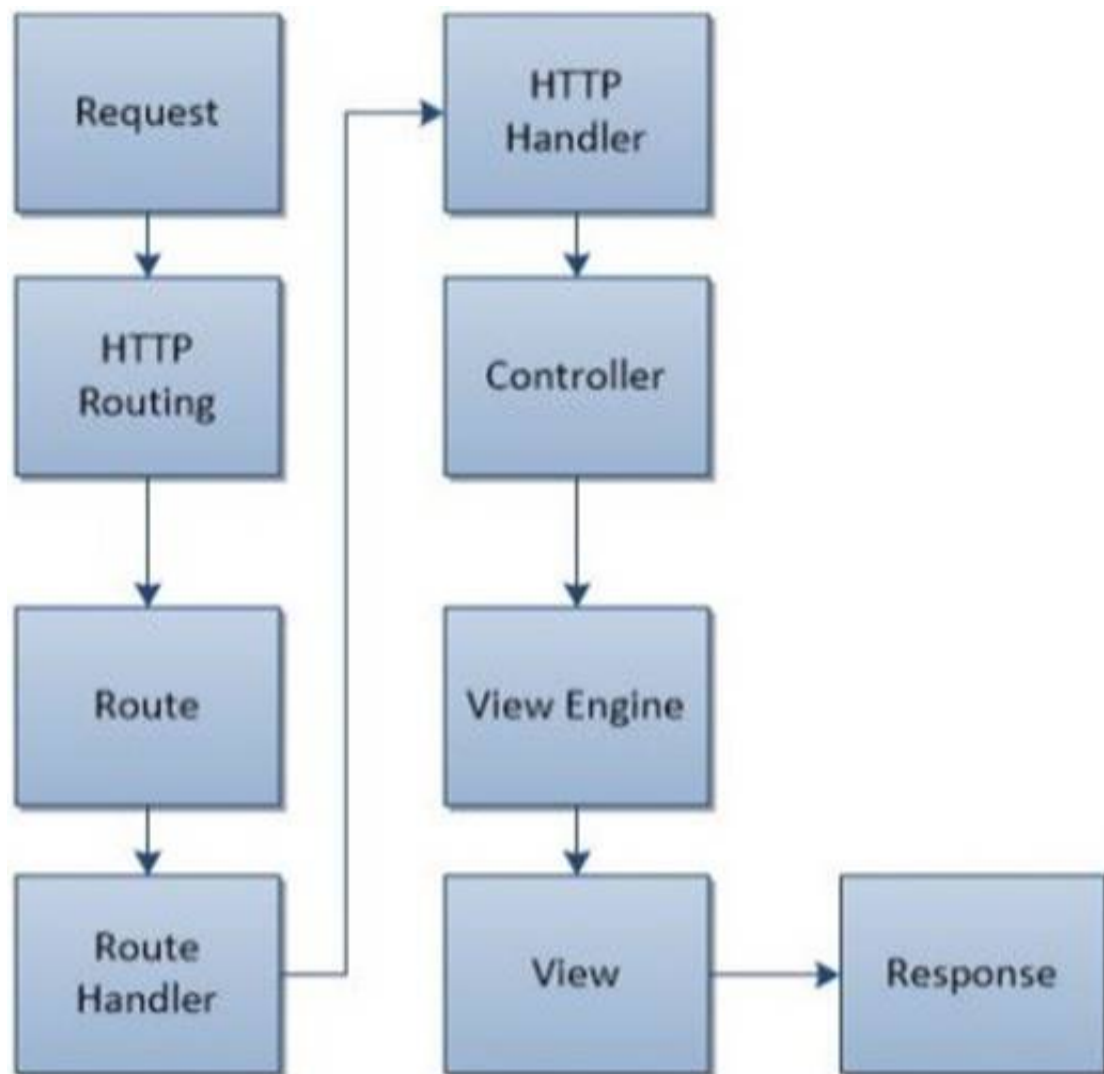
- A. Analyzing requirements
- B. Prototyping
- C. Software testing
- D. Flowcharting

Answer: C

NEW QUESTION 22

HOTSPOT - (Topic 1)

The ASP.NET MVC page lifecycle is shown in the following graphic:



Use the drop-down menus to select the answer choice that completes each statement Each correct selection is worth one point.

Answer Area

The [answer choice] event determines which action method is needed and then calls that method.

The URL pattern is matched during the [answer choice] event.

Answer Area

The [answer choice] event determines which action method is needed and then calls that method.

- View
- Route
- Controller
- HTTP Handler

The URL pattern is matched during the [answer choice] event.

- View
- Route
- Controller
- HTTP Handler

- A. Mastered
- B. Not Mastered

Answer: A

Explanation:

Answer Area

The [answer choice] event determines which action method is needed and then calls that method.

- View
- Route
- Controller
- HTTP Handler

The URL pattern is matched during the [answer choice] event.

- View
- Route
- Controller
- HTTP Handler

NEW QUESTION 24

HOTSPOT - (Topic 1)

You are creating a Windows Store application that uses the following gesture:



Use the drop-down menus to select the answer choice that completes each statement. Each correct selection is worth one point.

Answer Area

The gesture shown in the graphic is called [answer choice].

The surface displayed after the gesture has been completed is the [answer choice].

Answer Area

The gesture shown in the graphic is called [answer choice].

moving
pushing
sliding
swiping

The surface displayed after the gesture has been completed is the [answer choice].

app bar
canvas
charms
context menu

- A. Mastered
- B. Not Mastered

Answer: A

Explanation:

Answer Area

The gesture shown in the graphic is called [answer choice].

moving
pushing
sliding
swiping

The surface displayed after the gesture has been completed is the [answer choice].

app bar
canvas
charms
context menu

NEW QUESTION 29

- (Topic 1)

You are reviewing a design for a database. A portion of this design is shown in the exhibits. Note that you may choose either the Crow's Foot Notation or Chen Notation version of the design. (To view the Crow's Foot Notation, click the Exhibit A button. To view the Chen Notation, click the Exhibit B button.)

Exhibit A



Exhibit B



Which term is used to describe the Customer component?

- A. Field
- B. Attribute
- C. Property
- D. Entity

Answer: D

Explanation:

Customer is a table (entity).

NEW QUESTION 33

- (Topic 1)

Which three items are benefits of encapsulation? (Choose three.)

- A. maintainability
- B. flexibility
- C. restricted access
- D. inheritance
- E. performance

Answer: ABC

Explanation:

Encapsulation is the packing of data and functions into a single component.

In programming languages, encapsulation is used to refer to one of two related but distinct notions, and sometimes to the combination thereof:

* A language mechanism for restricting access to some of the object's components.

* A language construct that facilitates the bundling of data with the methods (or other functions) operating on that data.

Incorrect:

not D: Encapsulation is one of the four fundamental OOP concepts. The other three are inheritance, polymorphism, and abstraction.

NEW QUESTION 36

- (Topic 1)

What are two methods that can be used to evaluate the condition of a loop at the start of each iteration? (Each correct answer presents a complete solution. Choose two.)

- A. If
- B. D
- C. . . While
- D. For
- E. While

Answer: CD

Explanation:

For and While constructs check at the start of each iteration.

NEW QUESTION 38

- (Topic 1)

You are creating an application that presents the user with a Windows Form. You need to configure the application to display a message box to confirm that the user wants to close the form.

Which event should you handle?

- A. Deactivate
- B. Leave
- C. FormClosed
- D. FormClosing

Answer: D

Explanation:

The Closing event occurs as the form is being closed.

NEW QUESTION 39

- (Topic 1)

What are two advantages of normalization in a database? (Choose two)

- A. prevents data inconsistencies
- B. reduces schema limitations
- C. minimizes impact of data corruption
- D. decreases space used on disk

Answer: AD

NEW QUESTION 44

- (Topic 1)

You need to create an application that processes data on a last-in, first-out (LIFO) basis. Which data structure should you use?

- A. Queue
- B. Tree
- C. Stack
- D. Array

Answer: C

Explanation:

A stack implements LIFO.

NEW QUESTION 47

- (Topic 1)

You create an application that uses Simple Object Access Protocol (SOAP).

Which technology provides information about the application's functionality to other applications?

- A. Web Service Description Language (WSDL)
- B. Extensible Application Markup Language (XAML)
- C. Common Intermediate Language (CIL)
- D. Universal Description, Discovery, and Integration (UDDI)

Answer: A

Explanation:

WSDL is often used in combination with SOAP and an XML Schema to provide Web services over the Internet. A client program connecting to a Web service can read the WSDL file to determine what operations are available on the server. Any special datatypes used are embedded in the WSDL file in the form of XML Schema. The client can then use SOAP to actually call one of the operations listed in the WSDL file using for example XML over HTTP.

NEW QUESTION 52

- (Topic 1)

Which two types of information should you include in an effective test case? (Choose two.)

- A. the expected result from testing the case
- B. multiple actions combined as a single step to test the case
- C. any pre-conditions necessary to test the case
- D. the stakeholders who originated the test case

Answer: AB

Explanation:

You can create manual test cases using Microsoft Test Manager that have both action and validation test steps. You can also share a set of common test steps between multiple test cases called shared steps. This simplifies maintenance of test steps if your application under test changes.

NEW QUESTION 54

- (Topic 1)

You are migrating several HTML pages to your website. Many of these pages contain HTML <center> and tags. Which XHTML document type declaration should you use?

A.	<code><!DOCTYPE HTML PUBLIC "-//W3C//DTD HTML 4.01 Transitional//EN" "http://www.w3.org/TR/html4/loose.dtd"></code>
B.	<code><!DOCTYPE html></code>
C.	<code><!DOCTYPE html PUBLIC "-//W3C//DTD XHTML 1.0 Frameset//EN" "http://www.w3.org/TR/xhtml1/DTD/xhtml1-frameset.dtd"></code>
D.	<code><!DOCTYPE html PUBLIC "-//W3C//DTD XHTML 1.0 Strict//EN" "http://www.w3.org/TR/xhtml1/DTD/xhtml1-strict.dtd"></code>

- A. Option A
- B. Option B
- C. Option C
- D. Option D

Answer: A

Explanation:

The <!DOCTYPE> declaration is not an HTML tag; it is an instruction to the web browser about what version of HTML the page is written in.

XHTML 1.0 Transitional

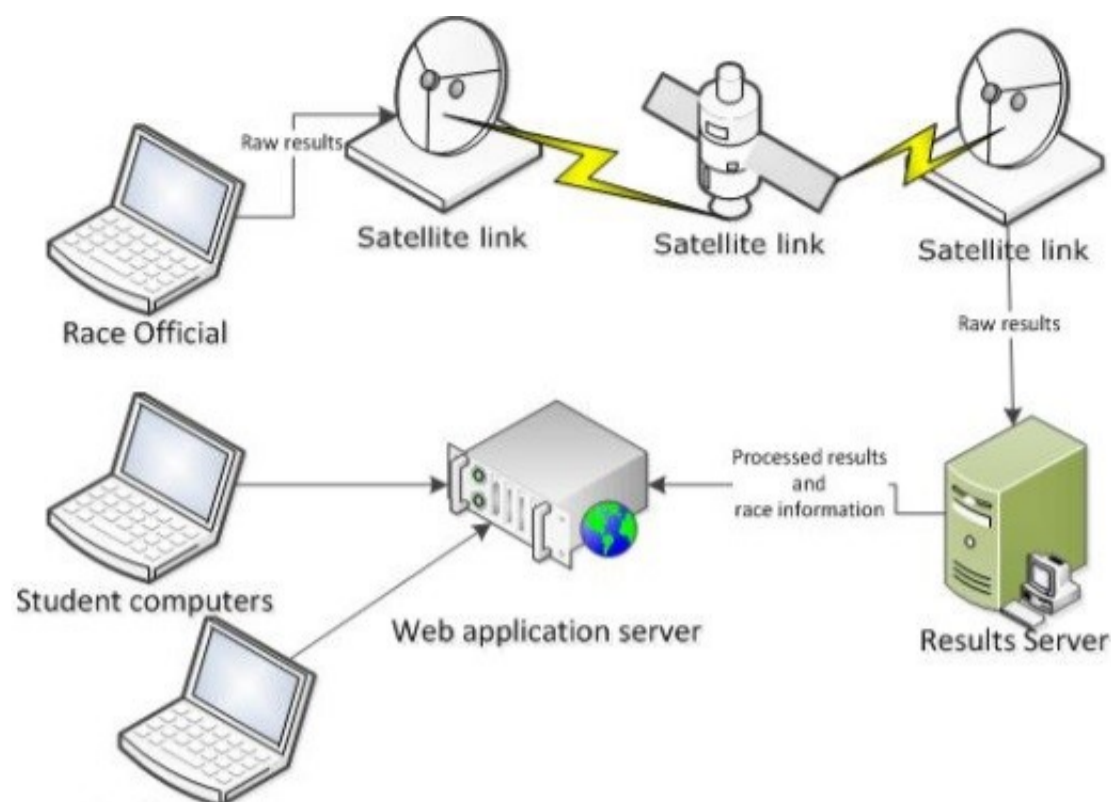
This DTD contains all HTML elements and attributes, INCLUDING presentational and deprecated elements (like font). Framesets are not allowed. The markup must also be written as well-formed XML.

`<!DOCTYPE html PUBLIC "-//W3C//DTD XHTML 1.0 Transitional//EN" "http://www.w3.org/TR/xhtml1/DTD/xhtml1-transitional.dtd">`

NEW QUESTION 57

HOTSPOT - (Topic 1)

You are reviewing the architecture for a system that allows race officials to enter the results of 5K race results. The results are then made available to students using a web application. The architecture is shown below:



Use the drop-down menus to select the answer choice that answers each question. Each correct selection is worth one point.

Answer Area

To minimize the time between when a race official records the results and when the results are available on the web, which part of the system is critical?

To increase the number of students that can access race results, what element should be added to the system?

Answer Area

To minimize the time between when a race official records the results and when the results are available on the web, which part of the system is critical?

 satellite link
 student computer
 race official computer
 web application server

To increase the number of students that can access race results, what element should be added to the system?

 satellite link
 race officials
 results servers
 web application servers

- A. Mastered
B. Not Mastered

Answer: A

Explanation:

Answer Area

To minimize the time between when a race official records the results and when the results are available on the web, which part of the system is critical?

 satellite link
 student computer
 race official computer
 web application server

To increase the number of students that can access race results, what element should be added to the system?

 satellite link
 race officials
 results servers
 web application servers

NEW QUESTION 62

- (Topic 1)

The throw keyword is used to perform which two actions? (Choose two.)

- A. stop processing of the code
B. move error handling to a separate thread
C. raise exceptions
D. re-throw exceptions as a different type

Answer: CD

Explanation:

* The Throw statement throws an exception that you can handle with structured exception-handling code (Try...Catch...Finally) or unstructured exception-handling code (On Error GoTo). You can use the Throw statement to trap errors within your code because Visual Basic moves up the call stack until it finds the appropriate exception-handling code.

* This example throws an ApplicationException exception. Throw New ApplicationException

NEW QUESTION 64

- (Topic 1)

You have a stack that contains integer values. The values are pushed onto the stack in the following order: 2,4,6,8.

The following sequence of operations is executed:

Pop Push 3 Pop Push 4

Push 6

Push 7 Pop Pop Pop

What is the value of the top element after these operations are executed?

- A. 2
- B. 3
- C. 6
- D. 7

Answer: B

NEW QUESTION 68

- (Topic 1)

This question requires that you evaluate the underlined text to determine if it is correct.

The benefit of using a transaction when updating multiple tables is that the update cannot fail.

Select the correct answer if the underlined text does not make the statement correct. Select "No change is needed" if the underlined text makes the statement correct.

- A. No change is needed
- B. succeeds or fails as a unit
- C. finishes as quickly as possible
- D. can be completed concurrently with other transactions

Answer: B

Explanation:

The benefit of using a transaction when updating multiple tables is that the update succeeds or fails as a unit.

NEW QUESTION 72

- (Topic 1)

This question requires that you evaluate the underlined text to determine if it is correct.

The Response.Redirect method is used to transfer processing of the current page to a new page, and then return processing back to the calling page once processing of the new page has completed.

Select the correct answer if the underlined text does not make the statement correct. Select "No change is needed" if the underlined text makes the statement correct.

- A. No change is needed
- B. Server.Transfer method
- C. Server.Execute method
- D. meta http-equiv="refresh" tag

Answer: C

Explanation:

The Execute method calls an .asp file, and processes it as if it were part of the calling ASP script. The Execute method is similar to a procedure call in many programming languages.

Incorrect:

* Response.Redirect Method

The Redirect method causes the browser to redirect the client to a different URL.

* The Server.Transfer method sends all of the information that has been assembled for processing by one .asp file to a second .asp file.

NEW QUESTION 73

- (Topic 1)

This question requires that you evaluate the underlined text to determine if it is correct.

The process of transforming compiled C# code into an XML string for a web service is known as deserialization.

Select the correct answer if the underlined text does not make the statement correct. Select "No change is needed" if the underlined text makes the statement correct.

- A. No change is needed
- B. serialization
- C. decoding
- D. encoding

Answer: B

Explanation:

Serialization is the process of converting an object into a stream of bytes in order to store the object or transmit it to memory, a database, or a file. Its main purpose is to save the state of an object in order to be able to recreate it when needed.

Serialization allows the developer to save the state of an object and recreate it as needed, providing storage of objects as well as data exchange. Through serialization, a developer can perform actions like sending the object to a remote application by means of a Web

Service, passing an object from one domain to another, passing an object through a firewall as an XML string, or maintaining security or user-specific information across applications.

NEW QUESTION 77

- (Topic 1)

You have a table named ITEMS with the following fields:

? ID (integer, primary key, auto generated)

? Description (text)

? Completed (Boolean)

You need to insert the following data in the table:

"Cheese", False

Which statement should you use?

A. INSERT INTO ITEMS (ID, Description, Completed) VALUES (1, 'Cheese', 0)

B. INSERT INTO ITEMS (Description, Completed) VALUES ('Cheese', 1)

C. INSERT INTO ITEMS (10, Description, Completed) VALUES (NEWID(), 'Cheese', 6)

D. INSERT INTO ITEMS (Description, Completed) VALUES ('Cheese', 0)

Answer: D

Explanation:

The string values TRUE and FALSE can be converted to bit values: TRUE is converted to 1 and FALSE is converted to 0.

Incorrect:

Not A, not C: ID is autogenerated and should not be specified.

NEW QUESTION 82

- (Topic 1)

You need to group all the style settings into a separate file that can be applied to all the pages in a Web application.

What should you do?

A. Use a Cascading Style Sheet (CSS).

B. Use inline styles.

C. Use an Extensible Markup Language (XML) schema.

D. Use a WebKit.

Answer: A

Explanation:

Cascading Style Sheets (CSS) is a style sheet language used for describing the look and formatting of a document written in a markup language.

CSS is designed primarily to enable the separation of document content from document presentation, including elements such as the layout, colors, and fonts.

NEW QUESTION 86

- (Topic 1)

Which type of Windows application presents a parent window that contains child windows?

A. Application programming interface (API)

B. Single-document interface (SDI)

C. Multiple-document interface (MDI)

D. Command-line interface (CLI)

Answer: C

Explanation:

A multiple document interface (MDI) is a graphical user interface in which multiple windows reside under a single parent window. Such systems often allow child windows to embed other windows inside them as well, creating complex nested hierarchies. This contrasts with single document interfaces (SDI) where all windows are independent of each other.

NEW QUESTION 87

- (Topic 1)

You execute the following code.

```
for(int i = 0; i <= 10; i+= 2)
{
    Console.WriteLine("Hello");
}
```

How many times will the word Hello be printed?

A. 5

B. 6

C. 10

D. 12

Answer: B

NEW QUESTION 92

- (Topic 1)

This question requires that you evaluate the underlined text to determine if it is correct.

To minimize the amount of storage used on the hard drive by an application that generates many small files, you should make the partition as small as possible.

Select the correct answer if the underlined text does not make the statement correct. Select "No change is needed" if the underlined text makes the statement correct.

A. No change is needed

B. file allocation table

- C. block size
- D. folder and file names

Answer: C

NEW QUESTION 96

- (Topic 1)

The purpose of a constructor in a class is to:

- A. Initialize an object of that class.
- B. Release the resources that the class holds.
- C. Create a value type.
- D. Inherit from the base class.

Answer: A

Explanation:

Each value type has an implicit default constructor that initializes the default value of that type.

NEW QUESTION 101

- (Topic 1)

You are creating an application that presents users with a graphical interface. Users will run this application from remote computers. Some of the remote computers do not have the

. NET Framework installed. Users do not have permissions to install software. Which type of application should you choose?

- A. Windows Forms
- B. Windows Service
- C. AS
- D. NET
- E. Console-based

Answer: C

NEW QUESTION 102

- (Topic 1)

You need to debug a Windows Service application by using breakpoints. What should you do?

- A. Write all events to an event log.
- B. Set the Windows Service status to Paused.
- C. Implement the Console.WriteLine method throughout the Windows Service.
- D. Use the Attach to Process menu in Microsoft Visual Studio.

Answer: D

Explanation:

* Because a service must be run from within the context of the Services Control Manager rather than from within Visual Studio, debugging a service is not as straightforward as debugging other Visual Studio application types. To debug a service, you must start the service and then attach a debugger to the process in which it is running.

* To debug a service Install your service.

Start your service, either from Services Control Manager, Server Explorer, or from code. In Visual Studio, choose Attach to Process from the Debug menu. Etc.

NEW QUESTION 105

HOTSPOT - (Topic 1)

For each of the following statements, select Yes if the statement is true. Otherwise, select No. Each correct selection is worth one point.

Answer Area

Description of Behavior	Yes	No
An entity relationship diagram (ERD) is designed for an object-oriented database.	<input type="radio"/>	<input type="radio"/>
An entity relationship diagram (ERD) contains entities, relationships, and attributes.	<input type="radio"/>	<input type="radio"/>
Cardinality refers to how one table is linked to another table; as one-to-many.	<input type="radio"/>	<input type="radio"/>

- A. Mastered
- B. Not Mastered

Answer: A

Explanation:

Answer Area

Description of Behavior	Yes	No
An entity relationship diagram (ERD) is designed for an object-oriented database.	<input type="radio"/>	<input checked="" type="radio"/>
An entity relationship diagram (ERD) contains entities, relationships, and attributes.	<input checked="" type="radio"/>	<input type="radio"/>
Cardinality refers to how one table is linked to another table; as one-to-many.	<input checked="" type="radio"/>	<input type="radio"/>

NEW QUESTION 110

- (Topic 1)

You have a class named Glass that inherits from a base class named Window. The Window class includes a protected method named break(). How should you call the Glass class implementation of the break() method?

- A. Window.break();
- B. Glass.break();
- C. this.break();
- D. base.break();

Answer: A

NEW QUESTION 114

- (Topic 1)

You are creating an ASP. NET Web application.

Which line of code should you use to require a control to process on the computer that hosts the application?

- A. defaultRedirect="ServerPag
- B. htm"
- C. redirect="HostPag
- D. htm"
- E. AutoEventWireup="true"
- F. runat="server"

Answer: D

NEW QUESTION 116

- (Topic 1)

You are creating an application that accepts input and displays a response to the user. You cannot create a graphical interface for this application. Which type of application should you create?

- A. Windows Forms
- B. Windows Service
- C. Web-based
- D. Console-based

Answer: C

NEW QUESTION 121

- (Topic 1)

A table named Student has columns named ID, Name, and Age. An index has been created on the ID column. What advantage does this index provide?

- A. It reorders the records alphabetically.
- B. It speeds up query execution.
- C. It minimizes storage requirements.
- D. It reorders the records numerically.

Answer: B

Explanation:

Faster to access an index table.

NEW QUESTION 124

- (Topic 1)

You are creating an application for a priority help desk center. The most recent call must be handled first. Which data structure should you use?

- A. queue
- B. hashtable
- C. stack
- D. binary tree

Answer: C

Explanation:

In computer science, a stack is a particular kind of abstract data type or collection in which the principal (or only) operations on the collection are the addition of an entity to the collection, known as push and removal of an entity, known as pop. The relation between the push and pop operations is such that the stack is a Last-In-First-Out (LIFO) data structure. In a LIFO data structure, the last element added to the structure must be the first one to be removed.

NEW QUESTION 129

- (Topic 1)

How many parameters can a default constructor have?

- A. 1
- B. 2
- C. 3 or more

Answer: A

Explanation:

If a class contains no instance constructor declarations, a default instance constructor is automatically provided. That default constructor simply invokes the parameterless constructor of the direct base class.

NEW QUESTION 132

- (Topic 1)

You are building a web application that enables international exchange students to schedule phone calls with their prospective schools.

The application allows students to indicate a preferred date and time for phone calls. Students may indicate no preferred time by leaving the date and time field empty. The application must support multiple time zones.

Which data type should you use to record the student's preferred date and time?

- A. uLong?
- B. DateTime
- C. SByte
- D. DateTimeOffset?

Answer: D

Explanation:

datetimeoffset: Defines a date that is combined with a time of a day that has time zone awareness and is based on a 24-hour clock.

Incorrect:

DateTime: Defines a date that is combined with a time of day with fractional seconds that is based on a 24-hour clock.

sByte: The sbyte keyword indicates an integral type that stores values in the range of -128 to 127.

NEW QUESTION 137

- (Topic 1)

This question requires that you evaluate the underlined text to determine if it is correct. Arguments are passed to console applications as a Hashtable object. Select the correct answer if the underlined text does not make the statement correct. Select "No change is needed" if the underlined text makes the statement correct.

- A. No change is needed
- B. String Array
- C. StoredProcedureCollection
- D. Dictionary

Answer: B

Explanation:

Arguments are passed to console applications as a String Array object.

NEW QUESTION 138

HOTSPOT - (Topic 1)

For each of the following statements, select Yes if the statement is true. Otherwise, select No. Each correct selection is worth one point.

Answer Area

Statement	Yes	No
XHTML attribute names must be in uppercase.	<input type="radio"/>	<input type="radio"/>
XHTML attribute values must be in quotation marks.	<input type="radio"/>	<input type="radio"/>
XHTML attribute minimization is forbidden.	<input type="radio"/>	<input type="radio"/>

- A. Mastered
B. Not Mastered

Answer: A

Explanation:

Answer Area

Statement	Yes	No
XHTML attribute names must be in uppercase.	<input type="radio"/>	<input checked="" type="radio"/>
XHTML attribute values must be in quotation marks.	<input checked="" type="radio"/>	<input type="radio"/>
XHTML attribute minimization is forbidden.	<input checked="" type="radio"/>	<input type="radio"/>

NEW QUESTION 142

- (Topic 1)

Two classes named Circle and Square inherit from the Shape class. Circle and Square both inherit Area from the Shape class, but each computes Area differently. Which term is used to describe this object-oriented concept?

- A. polymorphism
B. encapsulation
C. superclassing
D. overloading

Answer: A

Explanation:

You can use polymorphism to in two basic steps:

Create a class hierarchy in which each specific shape class derives from a common base class.

Use a virtual method to invoke the appropriate method on any derived class through a single call to the base class method.

NEW QUESTION 147

- (Topic 1)

This question requires that you evaluate the underlined text to determine if it is correct.

When creating a site to utilize message queuing, the "IP address" must be configured to MSMQ.

Select the correct answer if the underlined text does not make the statement correct. Select "No change is needed" if the underlined text makes the statement correct.

- A. No change is needed
B. protocol
C. host header
D. port

Answer: B

Explanation:

MSMQ is a messaging protocol that allows applications running on separate servers/processes to communicate in a failsafe manner.

NEW QUESTION 149

- (Topic 1)

What is displayed when you attempt to access a Web service by using a Web browser?

- A. a listing of methods that are available in the Web service
- B. a directory listing of the Web service's application structure
- C. an error page explaining that you have accessed the Web service incorrectly
- D. a visual depiction of your preliminary connection to the Web service

Answer: A

Explanation:

The server, in response to this request, displays the Web service's HTML description page.

The Web service's HTML description page shows you all the Web service methods supported by a particular Web service. Link to the desired Web service method and enter the necessary parameters to test the method and see the XML response.

NEW QUESTION 154

- (Topic 1)

Which service can host an ASP.NET application?

- A. Internet Information Services
- B. Cluster Services
- C. Remote Desktop Services
- D. Web Services

Answer: A

Explanation:

Using Internet Information Services (IIS) Manager, you can create a local Web site for hosting an ASP.NET Web application.

NEW QUESTION 158

- (Topic 1)

You need to create a property in a class. Consumers of the class must be able to read the values of the property. Consumers of the class must be prevented from writing values to the property.

Which property procedure should you include?

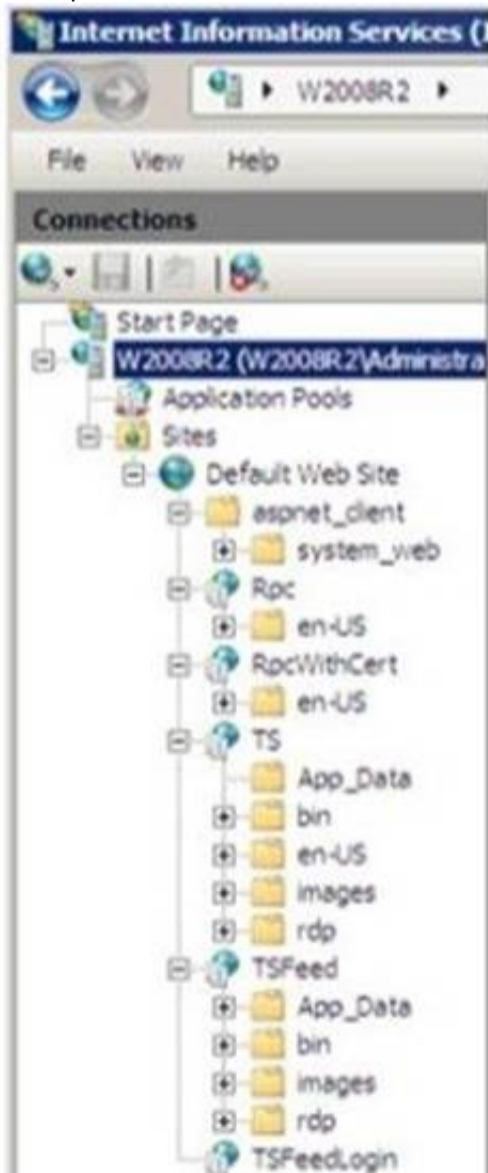
- A. Return
- B. Get
- C. Set
- D. Let

Answer: B

NEW QUESTION 160

HOTSPOT - (Topic 1)

You open the Internet Information Services 7.5 Manager console as shown in the following exhibit:



You need to examine the current configuration of the server W2008R2.

Use the drop-down menus to select the answer choice that answers each question. Each correct selection is worth one point.

Answer Area

How many sites are configured on server W2008R2?

How many applications are configured on server W2008R2?

Answer Area

How many sites are configured on server W2008R2?

0
1
5
13

How many applications are configured on server W2008R2?

0
1
5
13

- A. Mastered
- B. Not Mastered

Answer: A

Explanation:

Answer Area

How many sites are configured on server W2008R2?

0
1
5
13

How many applications are configured on server W2008R2?

0
1
5
13

NEW QUESTION 161

- (Topic 1)

You have a Microsoft ASP.NET web application.

You need to store a value that can be shared across users on the server. Which type of state management should you use?

- A. Session
- B. ViewState
- C. Application
- D. Cookies

Answer: C

Explanation:

Application state is a data repository available to all classes in an ASP.NET application. Application state is stored in memory on the server and is faster than storing and retrieving information in a database. Unlike session state, which is specific to a single user session, application state applies to all users and sessions. Therefore, application state is a useful place to store small amounts of often-used data that does not change from one user to another.

Incorrect:

not A: Session State contains information that is pertaining to a specific session (by a particular client/browser/machine) with the server. It's a way to track what the user is doing on the site.. across multiple pages...amid the statelessness of the Web. e.g. the contents of a particular user's shopping cart is session data. Cookies can be used for session state. Not B: Viewstate is a state management technique in asp.net. ASP.NET Viewstate is preserving the data between the requests or postbacks and stored in hidden fields on the page.

NEW QUESTION 163

- (Topic 1)

You are creating an application that presents the user with a Windows Form.

Which event is triggered each time the Windows Form receives focus?

- A. Enter
- B. Paint
- C. Load
- D. Activated

Answer: A

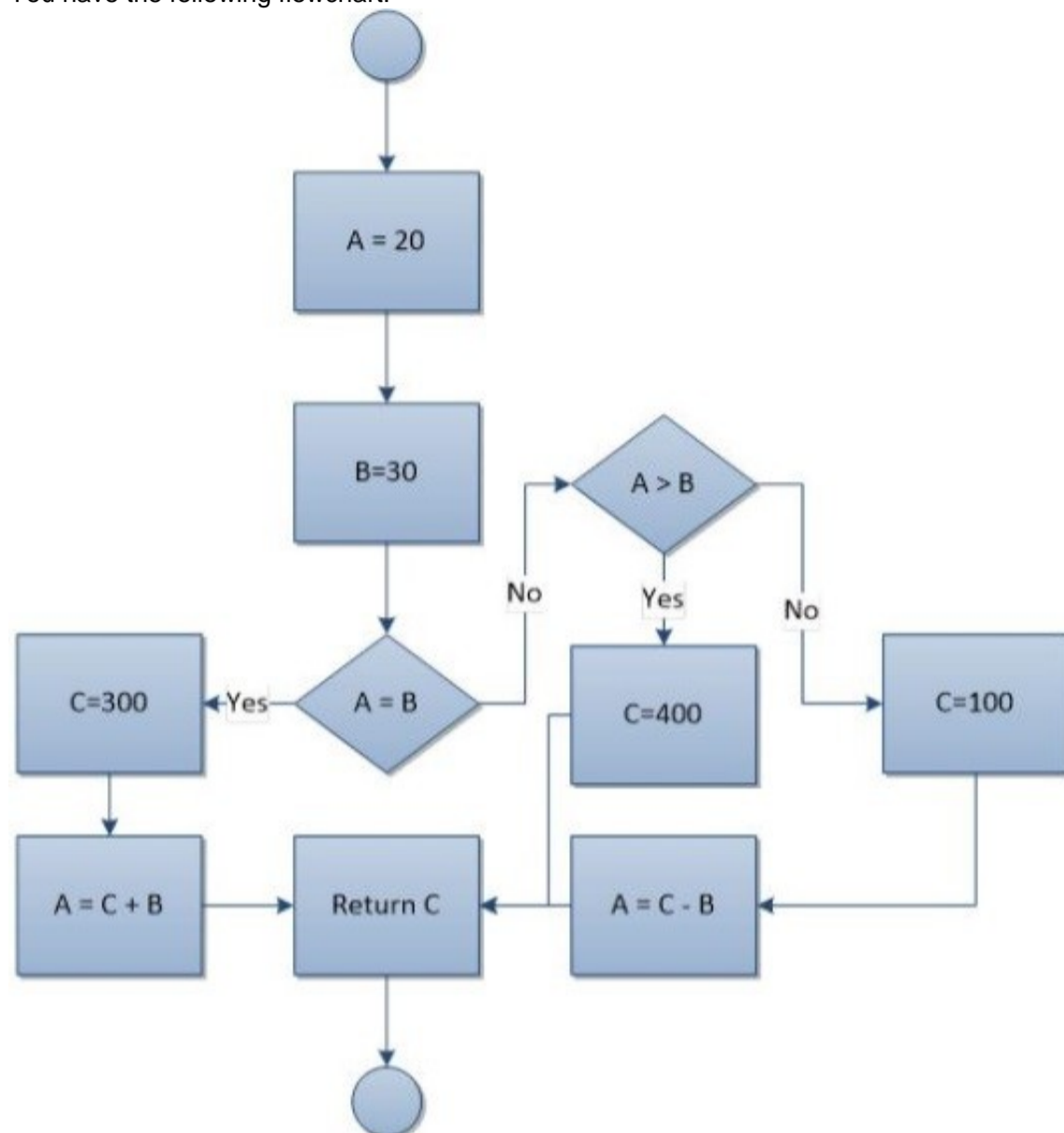
Explanation:

When you change the focus by using the mouse or by calling the Focus method, focus events of the Control class occur in the following order:
Enter GotFocus LostFocus Leave Validating Validated

NEW QUESTION 164

HOTSPOT - (Topic 2)

You have the following flowchart:



Use the drop-down menus to select the answer choice that completes each statement Each correct selection is worth one point.

Answer Area

The value that is returned is [answer choice].

The value of A is [answer choice].

Answer Area

The value that is returned is [answer choice].

- 20
- 100
- 300
- 400

The value of A is [answer choice].

- 20
- 30
- 70
- 330

- A. Mastered
- B. Not Mastered

Answer: A

Explanation:

Answer Area

The value that is returned is [answer choice].

☐ 20
☒ 100
☐ 300
☐ 400

The value of A is [answer choice].

☐ 20
☐ 30
☒ 70
☐ 330

NEW QUESTION 166

- (Topic 2)

This question requires that you evaluate the underlined text to determine if it is correct.

When creating a site to utilize message queuing, the "IP address" must be configured to MSMQ.

Select the correct answer if the underlined text does not make the statement correct. Select "No change is needed" if the underlined text makes the statement correct.

- A. No change is needed
- B. protocol
- C. host header
- D. port

Answer: B

Explanation:

MSMQ is a messaging protocol that allows applications running on separate servers/processes to communicate in a failsafe manner.

NEW QUESTION 170

- (Topic 2)

What are two methods that can be used to evaluate the condition of a loop at the start of each iteration? (Each correct answer presents a complete solution. Choose two.)

- A. For
- B. D
- C. . . While
- D. If
- E. While

Answer: AD

Explanation:

For and While constructs check at the start of each iteration.

NEW QUESTION 173

- (Topic 2)

You execute the following code.

```
For i = 0 to 10 Step 2
    Console.WriteLine("Hello")
Next
```

How many times will the word Hello be printed?

- A. 5
- B. 6
- C. 10
- D. 12

Answer: B

NEW QUESTION 175

- (Topic 2)

The purpose of a constructor in a class is to:

- A. Initialize an object of that class.
- B. Inherit from the base class.
- C. Release the resources that the class holds.
- D. Create a value type.

Answer: A

Explanation:

Each value type has an implicit default constructor that initializes the default value of that type.

NEW QUESTION 179

- (Topic 2)

In this XHTML code sample, what will cause an error?

```
<!DOCTYPE html PUBLIC "-//W3C//DTD XHTML 1.0 Strict//EN" "http://www.w3.org/TR/xhtml1/DTD/xhtml1-strict.dtd">
<html xmlns="http://www.w3.org/1999/xhtml" lang="en" xml:lang="en">
  <head>
    <title>The Title</title>
  </head>
  <body>
    <h1>This is a Heading.</h1>
    <p>This is a paragraph</p><br>
  </body>
</html>
```

- A. The line break tag is incorrectly formatted.
- B. The HTML tags do not read XHTML.
- C. The body tag is missing a background attribute,
- D. All tags are not in uppercase.

Answer: A

Explanation:

In XHTML, the
 tag must be properly closed, like this:
.

NEW QUESTION 183

- (Topic 2)

What are the three basic states that a Windows service can be in? (Choose three.)

- A. running
- B. starting
- C. halted
- D. stopped
- E. paused

Answer: BDE

Explanation:

A service can exist in one of three basic states: Running, Paused, or Stopped.

NEW QUESTION 188

- (Topic 2)

This question requires that you evaluate the underlined text to determine if it is correct.

The benefit of using a transaction when updating multiple tables is that the update cannot fail.

Select the correct answer if the underlined text does not make the statement correct. Select "No change is needed" if the underlined text makes the statement correct.

- A. No change is needed
- B. succeeds or fails as a unit
- C. finishes as quickly as possible
- D. can be completed concurrently with other transactions

Answer: B

Explanation:

The benefit of using a transaction when updating multiple tables is that the update succeeds or fails as a unit.

NEW QUESTION 190

- (Topic 2)

A data warehouse database is designed to:

- A. Require validation of incoming data during real-time business transactions.
- B. Enable business decisions by collecting, consolidating, and organizing data.
- C. Support real-time business operations.
- D. Support a large number of concurrent users.

Answer: B

NEW QUESTION 192

- (Topic 2)

How should you configure an application to consume a Web service?

- A. Add the Web service to the development computer.
- B. Add a reference to the application in the Web service.
- C. Add a reference to the Web service in the application.
- D. Add the Web service code to the application.

Answer: C

Explanation:

Start by adding a Service Reference to the project. Right-click the ConsoleApplication1 project and choose ??Add Service Reference??:

NEW QUESTION 194

- (Topic 2)

Which of the following must exist to inherit attributes from a particular class?

- A. Public properties
- B. A has-a relationship
- C. Static members
- D. An is-a relationship

Answer: A

Explanation:

There must be some public properties that can be inherited.

NEW QUESTION 198

- (Topic 2)

All objects in .NET inherit from which item?

- A. a reference type
- B. the System.Type class
- C. a value type
- D. the System.Object class

Answer: D

Explanation:

The System.Object class supports all classes in the .NET Framework class hierarchy and provides low-level services to derived classes. This is the ultimate base class of all classes in the .NET Framework; it is the root of the type hierarchy.

NEW QUESTION 202

- (Topic 2)

You are writing a Web application that processes room reservation requests. You need to verify that the room that a guest has selected is not already reserved by another guest.

Which type of programming should you use to determine whether the room is still available when the request is made?

- A. functional
- B. in-browser
- C. dynamic
- D. server-side

Answer: :D

NEW QUESTION 204

HOTSPOT - (Topic 2)

You are creating a Windows Store application that uses the following gesture:



Use the drop-down menus to select the answer choice that completes each statement. Each correct selection is worth one point.

Answer Area

The gesture shown in the graphic is called [answer choice].

The surface displayed after the gesture has been completed is the [answer choice].

Answer Area

The gesture shown in the graphic is called [answer choice].

moving
pushing
sliding
swiping

The surface displayed after the gesture has been completed is the [answer choice].

app bar
canvas
charms
context menu

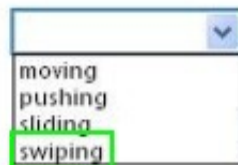
- A. Mastered
B. Not Mastered

Answer: A

Explanation:

Answer Area

The gesture shown in the graphic is called [answer choice].



The surface displayed after the gesture has been completed is the [answer choice].



NEW QUESTION 208

- (Topic 2)

You are creating an application that presents the user with a Windows Form. Which event is triggered each time the Windows Form receives focus?

- A. Load
B. Enter
C. Activated
D. paint

Answer: B

Explanation:

When you change the focus by using the mouse or by calling the Focus method, focus events of the Control class occur in the following order:
Enter GotFocus LostFocus Leave Validating Validated

NEW QUESTION 209

HOTSPOT - (Topic 2)

For each of the following statements, select Yes if the statement is true. Otherwise, select No. Each correct selection is worth one point.

Answer Area

Description of Behavior	Yes	No
A linked list has a maximum of 100 nodes.	<input type="radio"/>	<input type="radio"/>
You can add new nodes anywhere in a linked list.	<input type="radio"/>	<input type="radio"/>
A linked list can be sorted.	<input type="radio"/>	<input type="radio"/>

- A. Mastered
B. Not Mastered

Answer: A

Explanation:

Answer Area

Description of Behavior	Yes	No
A linked list has a maximum of 100 nodes.	<input type="radio"/>	<input checked="" type="radio"/>
You can add new nodes anywhere in a linked list.	<input checked="" type="radio"/>	<input type="radio"/>
A linked list can be sorted.	<input checked="" type="radio"/>	<input type="radio"/>

NEW QUESTION 212

DRAG DROP - (Topic 2)

You are extending an application that stores and displays the results of various types of foot races. The application contains the following definitions:

```
Public Interface IDisplayResult
    Sub Display()
End Interface
```

```
Public Class Race
    Public Seconds As Integer

    Public Overridable Sub Display()
        Console.WriteLine(Seconds)
    End Sub
End Class
```

The following code is used to display the result for a race:

```
Dim r1 = New FootRace()
Dim r2 = TryCast(r1, IDisplayResult)
r1.Seconds = 99
```

```
r1.Display()
r2.Display()
r1.DisplayRaw()
```

The contents of the console must be as follows:

? 99 seconds
? 1.65 minutes
? 99

You need to implement the FootRace class.

Match the method declaration to the method body. (To answer, drag the appropriate declaration from the column on the left to its body on the right. Each declaration may be used once, more than once, or not at all. Each correct match is worth one point.)

Code Segments

Public Overrides Sub Display()

Public Sub DisplayRaw()

Public Sub Display() Implements IDisplayResult.Display

Private Sub Display()

Answer Area

```
Public Class FootRace
    Inherits Race
    Implements IDisplayResult
```

Code Segment

```
    Console.WriteLine(Seconds & "seconds")
End Sub
```

Code Segment

```
    MyBase.Display()
End Sub
```

Code Segment

```
    Console.WriteLine(Seconds / 60 & " minutes")
End Sub
End Class
```

- A. Mastered
- B. Not Mastered

Answer: A

Explanation:

Code Segments

```
Public Overrides Sub Display()
```

```
Public Sub DisplayRaw()
```

```
Public Sub Display() Implements IDisplayResult.Display
```

```
Private Sub Display()
```

Answer Area

```
Public Class FootRace  
    Inherits Race  
    Implements IDisplayResult
```

```
Public Overrides Sub Display()
```

```
    Console.WriteLine(Seconds & "seconds")  
End Sub
```

```
Public Sub DisplayRaw()
```

```
    MyBase.Display()  
End Sub
```

```
Public Sub Display() Implements IDisplayResult.Display
```

```
    Console.WriteLine(Seconds / 60 & " minutes")  
End Sub  
End Class
```

NEW QUESTION 217

- (Topic 2)

Which type of Windows application presents a parent window that contains child windows?

- A. Multiple-document interface (MDI)
- B. Command-line interface (CLI)
- C. Single-document interface (SDI)
- D. Application programming interface (API)

Answer: A

Explanation:

A multiple document interface (MDI) is a graphical user interface in which multiple windows reside under a single parent window. Such systems often allow child windows to embed other windows inside them as well, creating complex nested hierarchies. This contrasts with single document interfaces (SDI) where all windows are independent of each other.

NEW QUESTION 219

- (Topic 2)

You are creating a Web application. The application will be consumed by client computers that run a variety of Web browsers. Which term is used to describe the process of making the application available for client computers to access?

- A. Deploying
- B. Hosting
- C. Virtualization
- D. Casting

Answer: B

Explanation:

You host web applications.

NEW QUESTION 222

- (Topic 2)

You have a website that includes a form for username and password. You need to ensure that users enter their username and password. The validation must work in all browsers. Where should you put the validation control?

- A. in the Web.config file
- B. in the server-side code only
- C. in the client-side code only
- D. in both the client-side code and the server-side code

Answer: D

Explanation:

From version 2.0 on, ASP.NET recognized the JavaScript capabilities of these browsers, so client-side validation is now available to all modern browsers, including Opera, Firefox, and others. Support is even better now in ASP.NET 4.0. That said, it's important not to forget that JavaScript can be disabled in any browser, so client-side validation cannot be relied upon—we must always validate any submitted data on the server.

NEW QUESTION 225

- (Topic 2)

What are two advantages of normalization in a database? (Choose two.)

- A. reduces schema limitations
- B. minimizes impact of data corruption
- C. decreases space used on disk
- D. prevents data inconsistencies

Answer: CD

NEW QUESTION 228

- (Topic 2)

This question requires that you evaluate the underlined text to determine if it is correct. Converting a value type to a reference type in an object is called boxing. Select the correct answer if the underlined text does not make the statement correct. Select "No change is needed" if the underlined text makes the statement correct.

- A. No change is needed
- B. unboxing
- C. interfacing
- D. mapping

Answer: :A

Explanation:

Boxing is an implicit conversion of a Value Types (C# Reference) to the type object or to any interface type implemented by this value type.

NEW QUESTION 231

- (Topic 2)

This question requires that you evaluate the underlined text to determine if it is correct.

The bubble sort algorithm steps through the list to be sorted, comparing adjacent items and swapping them if they are in the wrong order.

Select the correct answer if the underlined text does not make the statement correct. Select "No change is needed" if the underlined text makes the statement correct.

- A. No change is needed
- B. merge
- C. library
- D. insertion

Answer: A

NEW QUESTION 233

- (Topic 2)

This question requires that you evaluate the underlined text to determine if it is correct.

A piece of text that is 4096 bytes or smaller and is stored on and retrieved from the client computer to maintain state is known as a ViewState.

Select the correct answer if the underlined text does not make the statement correct. Select "No change is needed" if the underlined text makes the statement correct.

- A. No change is needed
- B. cookie
- C. form post
- D. QueryString

Answer: B

Explanation:

A piece of text that is 4096 bytes or smaller and is stored on and retrieved from the client computer to maintain state is known as a Cookie.

NEW QUESTION 234

HOTSPOT - (Topic 2)

For each of the following statements, select Yes if the statement is true. Otherwise, select No. Each correct selection is worth one point.

Answer Area

Description of Behavior	Yes	No
A queue's items are stored in the order they were added.	<input type="radio"/>	<input type="radio"/>
A queue is a first in, first out (FIFO) data structure.	<input type="radio"/>	<input type="radio"/>
A queue has a limited number of items.	<input type="radio"/>	<input type="radio"/>

- A. Mastered
B. Not Mastered

Answer: A

Explanation:

Answer Area

Description of Behavior	Yes	No
A queue's items are stored in the order they were added.	<input checked="" type="radio"/>	<input type="radio"/>
A queue is a first in, first out (FIFO) data structure.	<input checked="" type="radio"/>	<input type="radio"/>
A queue has a limited number of items.	<input type="radio"/>	<input checked="" type="radio"/>

NEW QUESTION 238

- (Topic 2)

This question requires that you evaluate the underlined text to determine if it is correct.

The process of transforming compiled C# code into an XML string for a web service is known as deserialization.

Select the correct answer if the underlined text does not make the statement correct. Select "No change is needed" if the underlined text makes the statement correct.

- A. No change is needed
B. serialization
C. decoding
D. encoding

Answer: B

Explanation:

Serialization is the process of converting an object into a stream of bytes in order to store the object or transmit it to memory, a database, or a file. Its main purpose is to save the state of an object in order to be able to recreate it when needed.

Serialization allows the developer to save the state of an object and recreate it as needed, providing storage of objects as well as data exchange. Through serialization, a developer can perform actions like sending the object to a remote application by means of a Web Service, passing an object from one domain to another, passing an object through a firewall as an XML string, or maintaining security or user-specific information across applications.

NEW QUESTION 241

- (Topic 2)

Which language allows you to dynamically create content on the client side?

- A. Cascading Style Sheets (CSS)
B. JavaScript (JS)
C. Extensible Markup Language (XML)
D. Hypertext Markup Language (HTML)

Answer: B

Explanation:

JavaScript (JS) is a dynamic computer programming language. It is most commonly used as part of web browsers, whose implementations allow client-side

scripts to interact with the user, control the browser, communicate asynchronously, and alter the document content that is displayed.

NEW QUESTION 244

HOTSPOT - (Topic 2)

You are developing a web application.

You need to create the following graphic by using Cascading Style Sheets (CSS):



Use the drop-down menus to select the answer choice that completes each statement. Each correct selection is worth one point.

Answer Area

For the CSS Style **background-image**, you should use the value
[answer choice]

For the CSS Style **border-radius**, you should use the value [answer choice]

Answer Area

For the CSS Style **background-image**, you should use the value
[answer choice]

linear-gradient(to top, green, black);
linear-gradient(to bottom, green, black);
radial-gradient(green, black);
repeating-linear-gradient(green, black);

For the CSS Style **border-radius**, you should use the value [answer choice]

10px;
10px, 10px, 10px;
inherit;
initial;

- A. Mastered
- B. Not Mastered

Answer: A

Explanation:

Answer Area

For the CSS Style **background-image**, you should use the value
[answer choice]

linear-gradient(to top, green, black);
linear-gradient(to bottom, green, black);
radial-gradient(green, black);
repeating-linear-gradient(green, black);

For the CSS Style **border-radius**, you should use the value [answer choice]

10px;
10px, 10px, 10px;
inherit;
initial;

NEW QUESTION 249

- (Topic 2)

You need to group all the style settings into a separate file that can be applied to all the pages in a Web application.

What should you do?

- A. Use a Cascading Style Sheet (CSS).
- B. Use an Extensible Markup Language (XML) schema.
- C. Use inline styles.
- D. Use a WebKit.

Answer: A

Explanation:

Cascading Style Sheets (CSS) is a style sheet language used for describing the look and formatting of a document written in a markup language.

CSS is designed primarily to enable the separation of document content from document presentation, including elements such as the layout, colors, and fonts.

NEW QUESTION 250

- (Topic 2)

You execute the following code.

```
Dim beakerFull As Boolean = True
Dim flameOn As Boolean = False
Dim iResult As Integer

Select Case beakerFull
    Case True
        Select Case flameOn
            Case True
                iResult = 1
            Case False
                iResult = 2
        End Select
    Case False
        Select Case flameOn
            Case False
                iResult = 3
            Case True
                iResult = 4
        End Select
End Select
```

What will the variable result be?

- A. 1
- B. 2
- C. 3
- D. 4

Answer: :B

NEW QUESTION 254

- (Topic 2)

Which type of function can a derived class override?

- A. A Protected Overridable member function
- B. A Shared function
- C. A Private Overridable function
- D. A non-overridable public member function

Answer: A

Explanation:

The Overridable modifier allows a property or method in a class to be overridden in a derived class. You cannot specify Overridable on a Private method.

NEW QUESTION 256

- (Topic 2)

You need to evaluate the following expression:

(A>B) AND (C<D)

What is the value of this expression if A=3, B=4, C=4, and D=5?

- A. 4
- B. 5
- C. False
- D. Null
- E. True

Answer: D

Explanation:

A>B is false.

NEW QUESTION 257

- (Topic 2)

You are reviewing a design for a database. A portion of this design is shown in the exhibits. Note that you may choose either the Crow's Foot Notation or Chen Notation version of the design. (To view the Crow's Foot Notation, click the Exhibit A button. To view the Chen Notation, click the Exhibit B button.)

Exhibit A



Exhibit B



Which term is used to describe the Customer component?

- A. Field
- B. Entity
- C. Property
- D. Attribute

Answer: B

Explanation:

Customer is a table (entity).

NEW QUESTION 259

- (Topic 2)

You are developing an application that tracks tennis matches. A match is represented by the following class:

```

Public Class Match
    Public Property Location As String
    Public Property MatchDate As Date?

    Public Sub New()
        Location = "unknown"
    End Sub
End Class
  
```

A match is created by using the following code:

```

Dim match = New Match With
    {.Location = "north region",
    .MatchDate = New DateTime(2013, 4, 14)}
  
```

How many times is the Location property on the newly created Match class assigned?

- A. 1
- B. 2
- C. 3

Answer: C

NEW QUESTION 260

- (Topic 2)

Which three phrases are advantages of connection pooling? (Choose three.)

- A. reduces load on the server
- B. improved performance
- C. reduces time to create a connection
- D. requires no configuration
- E. improved scalability

Answer: BCE

Explanation:

B: In connection pooling, after a connection is created, it is placed in the pool and it is used over again so that a new connection does not have to be established.

E: Connection pooling often improves application performance, concurrency and scalability.

C: Connection pooling also cuts down on the amount of time a user must wait to establish a connection to the database.

NEW QUESTION 262

- (Topic 2)

What are two possible options for representing a Web application within Internet Information Services (IIS)? (Each correct answer presents a complete solution. Choose two.)

- A. web site
- B. virtual directory
- C. application directory

- D. application server
- E. Web directory

Answer: AB

Explanation:

* Create a Web Application

An application is a grouping of content at the root level of a Web site or a grouping of content in a separate folder under the Web site's root directory. When you add an application in IIS 7, you designate a directory as the application root, or starting point, for the application and then specify properties specific to that particular application, such as the application pool that the application will run in.

* You can make an Existing Virtual Directory a Web Application.

NEW QUESTION 267

- (Topic 2)

You are creating an application that presents users with a graphical interface in which they computers that do not have network connectivity.

Which type of application should you choose?

- A. ClickOnce
- B. Windows Service
- C. Windows Forms
- D. Console-based

Answer: C

Explanation:

Use Windows Forms when a GUI is needed.

NEW QUESTION 268

- (Topic 2)

The purpose of the Catch section in an exception handler is to:

- A. Conclude the execution of the application.
- B. Break out of the error handler.
- C. Execute code only when an exception is thrown.
- D. Execute code regardless of whether an exception is thrown.

Answer: C

NEW QUESTION 271

- (Topic 2)

You run the following code.

```
Dim beakerFull As Boolean = True
Dim flameOn As Boolean = False
Dim iResult As Integer
```

```
Select Case beakerFull
    Case True
        Select Case flameOn
            Case True
                iResult = 4
            Case False
                iResult = 3
        End Select
    Case False
        Case flameOn
            Case False
                iResult = 2
            Case True
                iResult = 1
        End Select
```

What will the value of the variable iResult be?

- A. 1
- B. 2
- C. 3
- D. 4

Answer: C

NEW QUESTION 272

- (Topic 2)

Which two types of information should you include in an effective test case? (Choose two.)

- A. any pre-conditions necessary to test the case

- B. the expected result from testing the case
- C. multiple actions combined as a single step to test the case
- D. the stakeholders who originated the test case

Answer: BC

Explanation:

You can create manual test cases using Microsoft Test Manager that have both action and validation test steps. You can also share a set of common test steps between multiple test cases called shared steps. This simplifies maintenance of test steps if your application under test changes.

NEW QUESTION 273

- (Topic 2)

This question requires that you evaluate the underlined text to determine if it is correct. The Response.Redirect method is used to transfer processing of the current page to a new page, and then return processing back to the calling page once processing of the new page has completed.

Select the correct answer if the underlined text does not make the statement correct. Select "No change is needed" if the underlined text makes the statement correct.

- A. No change is needed
- B. Server.Transfer method
- C. Server.Execute method
- D. meta http-equiv="refresh" tag

Answer: C

Explanation:

The Execute method calls an .asp file, and processes it as if it were part of the calling ASP script. The Execute method is similar to a procedure call in many programming languages.

Incorrect:

* Response.Redirect Method

The Redirect method causes the browser to redirect the client to a different URL.

* The Server.Transfer method sends all of the information that has been assembled for processing by one .asp file to a second .asp file.

NEW QUESTION 276

- (Topic 2)

You run the following code:

```
Dim a As Integer = 10
Dim b As Integer = 20
Dim c As Integer = 30
Dim result As Integer = 0

If a <= b Or c > a Then
    result = 10
ElseIf a <= b Or c <= a Then
    result = 20
Else
    result = 30
End If
```

What is the value of result when the code has completed?

- A. 10
- B. 20
- C. 30

Answer: B

Explanation:

The conditional-OR operator (||) performs a logical-OR of its bool operands. If the first operand evaluates to true, the second operand isn't evaluated. If the first operand evaluates to false, the second operator determines whether the OR expression as a whole evaluates to true or false.

NEW QUESTION 277

- (Topic 2)

You are creating the necessary variables for an application. The data you will store in these variables has the following characteristics:

- ? Consists of numbers
- ? Includes numbers that have decimal points
- ? Requires more than seven digits of precision

You need to use a data type that will minimize the amount of memory that is used. Which data type should you use?

- A. Decimal
- B. Single
- C. Byte
- D. Double

Answer: D

Explanation:

The double keyword signifies a simple type that stores 64-bit floating-point values.
Precision: 15-16 digits

NEW QUESTION 281

- (Topic 2)

In the life cycle of an ASP. NET Web page, which phase follows the SaveStateComplete phase?

- A. Load
- B. Render
- C. PostInit
- D.PostBack

Answer: B

Explanation:

The SaveStateComplete event is raised after the view state and control state of the page and controls on the page are saved to the persistence medium. This is the last event raised before the page is rendered to the requesting browser.

NEW QUESTION 282

- (Topic 2)

You are designing a class for an application. You need to restrict the availability of the member variable accessCount to the base class and to any classes that are derived from the base class.

Which access modifier should you use?

- A. Protected
- B. Private
- C. Public
- D. Friend

Answer: B

NEW QUESTION 285

- (Topic 2)

What is displayed when you attempt to access a Web service by using a Web browser?

- A. a visual depiction of your preliminary connection to the Web service
- B. a listing of methods that are available in the Web service
- C. an error page explaining that you have accessed the Web service incorrectly
- D. a directory listing of the Web services application structure

Answer: B

Explanation:

The server, in response to this request, displays the Web service's HTML description page.

The Web service's HTML description page shows you all the Web service methods supported by a particular Web service. Link to the desired Web service method and enter the necessary parameters to test the method and see the XML response.

NEW QUESTION 287

- (Topic 2)

You are creating a routine that will perform calculations by using a repetition structure. You need to ensure that the entire loop executes at least once.

Which looping structure should you use?

- A. For-Each
- B. For
- C. While
- D. Do-While

Answer: D

Explanation:

In a Do..While loop the test is at the end of the structure, so it will be executed at least once.

NEW QUESTION 292

- (Topic 2)

Your database administrators will not allow you to write SQL code in your application. How should you retrieve data in your application?

- A. Reference an index in the database.
- B. Call a stored procedure.
- C. Query a database view.
- D. Script a SELECT statement to a file.

Answer: B

Explanation:

The SQL will only be inside the stored procedure.

NEW QUESTION 293

- (Topic 2)

You are creating an application for a help desk center. Calls must be handled in the same order in which they were received.

Which data structure should you use?

- A. Queue
- B. Hashtable
- C. Stack
- D. Binary tree

Answer: :A

NEW QUESTION 297

- (Topic 2)

The elements of an array must be accessed by:

- A. Calling the item that was most recently inserted into the array.
- B. Using a first-in, last-out (FILO) process.
- C. Using an integer index.
- D. Calling the last item in the memory array.

Answer: C

NEW QUESTION 298

- (Topic 2)

You have a stack that contains integer values. The values are pushed onto the stack in the following order: 2,4,6,8. The following sequence of operations is executed:

Pop

Push 3 Pop Push 4

Push 6

Push 7 Pop Pop Pop

What is the value of the top element after these operations are executed?

- A. 2
- B. 3
- C. 6
- D. 7

Answer: B

NEW QUESTION 303

- (Topic 2)

The purpose of the Finally section in an exception handler is to:

- A. Execute code only when an exception is thrown.
- B. Break out of the error handler.
- C. Execute code regardless of whether an exception is thrown.
- D. Conclude the execution of the application.

Answer: C

Explanation:

By using a finally block, you can clean up any resources that are allocated in a try block, and you can run code even if an exception occurs in the try block.

Typically, the statements of a finally block run when control leaves a try statement. The transfer of control can occur as a result of normal execution, of execution of a break, continue, goto, or return statement, or of propagation of an exception out of the try statement.

NEW QUESTION 307

- (Topic 2)

When a web service is referenced from a client application in Microsoft Visual Studio, which two items are created? (Choose two.)

- A. a stub
- B. a proxy
- C. a.disco file
- D. a.wsdlfile

Answer: CD

Explanation:

A .wsdl file that references the Web service is created, together with supporting files, such as discovery (.disco and .discomap) files, that include information about where the Web service is located.

NEW QUESTION 311

- (Topic 2)

Class C and Class D inherit from Class B. Class B inherits from Class A. The classes have the methods shown in the following table.

Class	Method
A	m1
B	m2
C	m3
D	m4

All methods have a protected scope.

Which methods does Class C have access to?

- A. only m1, m3
- B. only m2, m3
- C. m1, m3, m4
- D. m1, m2, m3
- E. m2, m3, m4
- F. only m3, m4

Answer: D

NEW QUESTION 314

- (Topic 2)

Which three are valid SQL keywords? (Choose three.)

- A. GET
- B. FROM
- C. SELECT
- D. WHAT
- E. WHERE

Answer: BCE

Explanation:

Example:

```
SELECT * FROM CustomersWHERE Country='Mexico';
```

NEW QUESTION 317

- (Topic 2)

You are creating an application that presents users with a graphical interface. Users will run this application from remote computers. Some of the remote computers do not have the

. NET Framework installed. Users do not have permissions to install software. Which type of application should you choose?

- A. Console-based
- B. AS
- C. NET
- D. Windows Service
- E. Windows Forms

Answer: B

NEW QUESTION 320

- (Topic 2)

You need to allow a consumer of a class to modify a private data member. What should you do?

- A. Provide a public function that assigns a value to the data member.
- B. Create global variables in the class.
- C. Assign a value directly to the data member.
- D. Provide a private function that assigns a value to the data member.

Answer: A

Explanation:

In this example (see below), the Employee class contains two private data members, name and salary. As private members, they cannot be accessed except by member methods. Public methods named GetName and Salary are added to allow controlled access to the private members. The name member is accessed by way of a public method, and the salary member is accessed by way of a public read-only property.

Note: The private keyword is a member access modifier. Private access is the least permissive access level. Private members are accessible only within the body of the class or the struct in which they are declared

Example:

```
class Employee2
{
    private string name = "FirstName, LastName"; private double salary = 100.0;
    public string GetName()
    {
        return name;
    }
    public double Salary
    {
        get { return salary; }
    }
}
```

```
}
}
```

NEW QUESTION 324

- (Topic 2)

You are creating an application that presents the user with a Windows Form. You need to configure the application to display a message box to confirm that the user wants to close the form.

Which event should you handle?

- A. Deactivate
- B. FormClosed
- C. Leave
- D. FormClosing

Answer: D

Explanation:

The Closing event occurs as the form is being closed.

NEW QUESTION 329

- (Topic 2)

You are reviewing a design for a database. A portion of this design is shown in the exhibit. Note that you may choose to view either the Crow's Foot Notation or Chen Notation version of the design. (To view the Crow's Foot Notation, click the Exhibit A button. To view the Chen Notation, click the Exhibit B button.)

Exhibit A



Exhibit B



Which term is used to describe the relationship between Customer and Order?

- A. many-to-many
- B. multi-dimensional
- C. one-to-many
- D. one-to-one
- E. one-dimensional

Answer: C

Explanation:

A customer can have many orders.

NEW QUESTION 331

- (Topic 2)

The following functions are defined:

```
Public Shared Function Printer(j As Integer) As Integer
    Dim i As Integer = j
    While i > 0
        Console.Write(i)
        i = Printer(i - 1)
    End While
    Return j
End Function
```

What does the console display after the following line? Printer(2)

- A. 210
- B. 211
- C. 2101
- D. 2121

Answer: B

NEW QUESTION 336

- (Topic 2)

You have a SQL Server database named MyDB that uses SQL Server Authentication. Which connection string should you use to connect to MyDB?

- A. Data Source=MyDB; Integrated Security=SSPf; Initial Catalog=Sales
- B. Data Source=MyDB; Trusted_Connection=True; MultipleActiveResultSets=True; Initial Catalog=Sales
- C. Data Source=MyDB; Integrated Security=True; Initial Catalog=Sales

D. Data Source=MyDB; UserID=username; Password=P@sswOrd; Initial Catalog=Sales

Answer: D

Explanation:

Integrated Security Integrated Security is by default set to false.

When false, User ID and Password are specified in the connection.

Incorrect:

not C: Windows Authentication (Integrated Security = true) remains the most secure way to log in to a SQL Server database.

NEW QUESTION 339

- (Topic 2)

You plan to create an application for your company. The application will run automated routines and write the results to a text-based log file. Little or no user interaction is required.

Security requirements on the host computers prevent you from running applications on startup, and users must be able to see the status easily on the screen. The host computers also have limited memory and monitors that display only two colors. These computers will have no network connectivity.

Which type of application should you use for this environment?

A. Windows Store app

B. console-based

C. DirectX

D. Windows Service

Answer: B

Explanation:

Building Console Applications

Applications in the .NET Framework can use the System.Console class to read characters from and write characters to the console. Data from the console is read from the standard input stream, data to the console is written to the standard output stream, and error data to the console is written to the standard error output stream.

NEW QUESTION 343

- (Topic 2)

You need to debug a Windows Service application by using breakpoints. What should you do?

A. Write all events to an event log.

B. Set the Windows Service status to Paused.

C. Implement the Console.WriteLine method throughout the Windows Service.

D. use the Attach to Process menu in Microsoft Visual Studio.

Answer: D

Explanation:

* Because a service must be run from within the context of the Services Control Manager rather than from within Visual Studio, debugging a service is not as straightforward as debugging other Visual Studio application types. To debug a service, you must start the service and then attach a debugger to the process in which it is running.

* To debug a service Install your service.

Start your service, either from Services Control Manager, Server Explorer, or from code. In Visual Studio, choose Attach to Process from the Debug menu. Etc.

NEW QUESTION 348

- (Topic 2)

Which service can host an ASP.NET application?

A. Remote Desktop Services

B. Internet Information Services

C. web Services

D. Cluster Services

Answer: :B

Explanation:

Using Internet Information Services (IIS) Manager, you can create a local Web site for hosting an ASP.NET Web application.

NEW QUESTION 353

HOTSPOT - (Topic 2)

You have a base class named Tree with a friend property named color and a protected property named NumberOfLeaves. In the same project, you also have a class named Person.

For each of the following statements, select Yes if the statement is true. Otherwise, select No. Each correct selection is worth one point.

Answer Area

Description of Behavior	Yes	No
Methods in the Person class can access the color property.	<input type="radio"/>	<input type="radio"/>
Methods in the Person class can access the NumberOfLeaves property.	<input type="radio"/>	<input type="radio"/>
Methods in the Tree class can access all private properties in Person.	<input type="radio"/>	<input type="radio"/>

- A. Mastered
- B. Not Mastered

Answer: A

Explanation:

Answer Area

Description of Behavior	Yes	No
Methods in the Person class can access the color property.	<input checked="" type="radio"/>	<input type="radio"/>
Methods in the Person class can access the NumberOfLeaves property.	<input type="radio"/>	<input checked="" type="radio"/>
Methods in the Tree class can access all private properties in Person.	<input type="radio"/>	<input checked="" type="radio"/>

NEW QUESTION 357

.....

Thank You for Trying Our Product

* 100% Pass or Money Back

All our products come with a 90-day Money Back Guarantee.

* One year free update

You can enjoy free update one year. 24x7 online support.

* Trusted by Millions

We currently serve more than 30,000,000 customers.

* Shop Securely

All transactions are protected by VeriSign!

100% Pass Your 98-361 Exam with Our Prep Materials Via below:

<https://www.certleader.com/98-361-dumps.html>