

# Microsoft

## Exam Questions 98-349

Windows Operating System Fundamentals



#### NEW QUESTION 1

- (Exam Topic 1)

Which two versions of Windows 7 support the Encrypting File System (EFS) functionality? (Each correct answer presents a complete solution. Chose two.)

- A. Ultimate Edition
- B. Home Premium Edition
- C. Professional Edition
- D. Starter Edition

**Answer:** AC

#### **Explanation:**

EFS is not fully supported on Windows 7 Starter, Windows 7 Home Basic, and Windows 7 Home Premium.

#### NEW QUESTION 2

- (Exam Topic 1)

Which is the fastest way to ensure that new desktop icons align into straight columns and rows?

- A. Right-click Desktop, select Properties, and then click Appearance.
- B. Right-click Desktop, select View, and then click Auto arrange icons.
- C. Right-click Taskbar, select Tile Vertically, and then click Tile Horizontally.
- D. Right-click Desktop and select Refresh.

**Answer:** B

#### NEW QUESTION 3

- (Exam Topic 1)

You need to configure a folder that allows everyone in your group to view and modify files. Which item in the Share With menu should you use?

- A. Specific People
- B. Nobody
- C. Homegroup (Read/Write)
- D. Homegroup (Read)

**Answer:** C

#### NEW QUESTION 4

- (Exam Topic 1)

A Windows 7 library:

- A. Organizes user files from disparate locations.
- B. Makes copies of user files in a central location.
- C. Encrypts files by using the Encrypting File System (EFS).
- D. Restores files from system backup.

**Answer:** A

#### NEW QUESTION 5

- (Exam Topic 1)

Windows hides some files by default to:

- A. Avoid accidental modification or deletion of system files.
- B. Protect the confidentiality of the contents of files.
- C. Improve access to system files.
- D. Save disk space.

**Answer:** A

#### NEW QUESTION 6

- (Exam Topic 1)

Your computer is running slower than usual.

Where should you look to find out which applications are consuming the maximum number of resources?

- A. Administrative Tools
- B. Device Manager
- C. System Tray
- D. Task Manager
- E. Network and Sharing Center

**Answer:** D

#### NEW QUESTION 7

- (Exam Topic 1)

You attempt to update your video driver. Your screen stops responding. You need to be able to restore the previous video driver.

Which Windows feature should you use?

- A. Disk Defragmenter
- B. Disk Cleanup
- C. Check Disk (Chkdsk)
- D. Safe Mode

**Answer:** D

#### **NEW QUESTION 8**

- (Exam Topic 1)

Which feature allows you to create a new virtual application?

- A. Application Virtualization Sequencer
- B. Windows Installer
- C. Remote Desktop Connection
- D. Windows Virtual PC

**Answer:** A

#### **NEW QUESTION 9**

- (Exam Topic 1)

Which Windows feature should you use to assign a drive letter to a shared folder on the network?

- A. Public Folder Sharing
- B. Computer Management Console
- C. Advanced Sharing
- D. Map Network Drive

**Answer:** D

#### **NEW QUESTION 10**

- (Exam Topic 1)

Which feature ensures that the latest device drivers are installed on your computer?

- A. Reliability and Performance Monitor
- B. Windows Update
- C. Task Scheduler
- D. System configuration Utility

**Answer:** B

#### **NEW QUESTION 10**

- (Exam Topic 1)

Which feature allows you to transfer information from your computer to your mobile phone?

- A. Windows Mobility Center
- B. Device Manager
- C. Sync Center
- D. Windows Easy Transfer

**Answer:** B

#### **Explanation:**

Ref:

<http://windows.microsoft.com/en-us/windows7/sync-music-pictures-contacts-and-calendars-with-a-mobile-devic>

#### **NEW QUESTION 14**

- (Exam Topic 1)

You need to find out whether your computer can run a program that performs resource-intensive tasks. Which Windows feature should you use?

- A. System Configuration Utility
- B. Memory Diagnostics Tool
- C. Reliability and Performance Monitor
- D. Windows Experience Index

**Answer:** D

#### **NEW QUESTION 17**

- (Exam Topic 1)

You need to prevent specific users from logging on to a computer from 24:00 hours to 07:00 hours. Which Control Panel feature should you use?

- A. User Account Control
- B. Administrative Tools
- C. Clock, Language, and Region
- D. Parental Controls

**Answer:** D

**Explanation:**

Ref: <http://windows.microsoft.com/en-us/windows/control-when-children-use-computer#1TC=windows-7>

**NEW QUESTION 20**

- (Exam Topic 1)

Which Windows feature allows you to roll back your computer's settings to a previous date and time?

- A. System Restore
- B. Safe Mode
- C. Disk Cloning
- D. Disk Mirroring

**Answer:** A

**NEW QUESTION 23**

- (Exam Topic 1)

Which two editions of Windows 7 support Windows XP mode? (Each correct answer presents a complete solution. Choose two.)

- A. Home Premium
- B. Starter
- C. Ultimate
- D. Professional

**Answer:** CD

**Explanation:**

Using Windows XP Mode, you can run programs that were designed for Windows XP on computers running Windows 7 Professional, Enterprise, or Ultimate editions.

**NEW QUESTION 24**

- (Exam Topic 1)

You attempt to print to a network printer, but you are unable to find the printer when you search for available printers. What is a reason that you might not be able to find the printer?

- A. Windows Firewall is blocking network discovery.
- B. The computer that the printer is connected to is turned off.
- C. The printer does not have the Plug and Play functionality.
- D. The printer is out of paper.

**Answer:** A

**NEW QUESTION 25**

- (Exam Topic 1)

A Windows service is a:

- A. Program or process that runs in the background and does not require user intervention.
- B. Hardware driver that provides support to a specific device.
- C. Program or process that runs in the foreground.
- D. Hardware driver that provides support to the operating system.

**Answer:** A

**NEW QUESTION 26**

- (Exam Topic 1)

You attempt to install Windows 7 on your personal computer. You receive an error message stating that your product key is not valid. What is causing the error?

- A. You accidentally entered the product key in lower case.
- B. Your product key does not match the version of Windows that you are installing.
- C. The product key you are trying to use has expired.
- D. You reformatted your hard disk drive before you installed Windows.

**Answer:** B

**NEW QUESTION 29**

- (Exam Topic 1)

The Encrypting File System (EFS) is a:

- A. Digital document that verifies the identity of a user.
- B. Specially made hard disk drive that requires a password.
- C. Sequence of characters used to encrypt and decrypt information stored in a folder.
- D. Feature that enables files to be stored in a secure format.

**Answer:** D

### NEW QUESTION 33

- (Exam Topic 1)

The purpose of a Public folder is to:

- A. share files with only one person on a network.
- B. share files with everyone on a network.
- C. share files with a selected group of people on a network.
- D. back up files to a location on a network.

**Answer: B**

### NEW QUESTION 34

- (Exam Topic 1)

You insert a software installation CD into your Windows 7 computer. The CD does not launch automatically.

You need to perform a manual installation. What should you do?

- A. From Control Panel, use Programs.
- B. From Control Panel, use Ease of Access.
- C. Browse the contents of the hard disk drive and locate the Program Files folder.
- D. Browse the contents of the CD and locate the Setup file.

**Answer: D**

### NEW QUESTION 38

- (Exam Topic 1)

You need to upgrade your computer from the FAT file system to an NTFS file system. What should you do?

- A. Use the Backup and Restore tool.
- B. Clear the hard disk drive by using the Format tool.
- C. Use the Convert C:/fs:ntfs command.
- D. Run the Windows Easy Transfer tool.

**Answer: C**

### NEW QUESTION 41

- (Exam Topic 1)

The Windows 7 USB/DVD Download Tool allows you to:

- A. Create a bootable version of Windows 7 on a USB stick or a writable DVD.
- B. Create backups of data files from your computer to a USB stick or a writable DVD.
- C. Install Microsoft .NET Framework on a USB stick or a writable DVD.
- D. Download files from the Internet directly to a USB stick or a writable DVD.

**Answer: A**

### NEW QUESTION 44

- (Exam Topic 1)

You plan to upgrade your computer to Windows 7.

You need to view a report that identifies potential compatibility problems with your computer's hardware, devices, and programs.

Which tool should you use?

- A. Sync Center
- B. Windows Anytime Upgrade
- C. Windows Upgrade Advisor
- D. Windows Easy Transfer

**Answer: C**

### NEW QUESTION 49

- (Exam Topic 1)

What should you do to secure and protect the connection to a Bluetooth device?

- A. Turn off make device discoverable after connecting your devices.
- B. Reset the Bluetooth device to factory default settings after making a connection.
- C. Turn off the Bluetooth device when not in use.
- D. Use unique pairing codes when connecting your devices.

**Answer: D**

### NEW QUESTION 53

- (Exam Topic 1)

You want to change the default printer used by the Quick Print feature in some applications. Where should you change the Windows default printer?

- A. In the printer's Properties window
- B. In the print queue
- C. Within the Print Setup page
- D. Within the Devices and Printers user interface

**Answer:** D

**NEW QUESTION 55**

- (Exam Topic 1)

BitLocker prevents:

- A. The operating system from overwriting protected sectors on the hard disk drive.
- B. Unauthorized users from accessing the Internet.
- C. Unauthorized access to files.
- D. Programs from accessing the memory of other programs.

**Answer:** C

**NEW QUESTION 60**

- (Exam Topic 1)

You have a document that you update regularly. To access it directly from a/an:

- A. folder.
- B. icon.
- C. library.
- D. shortcut.

**Answer:** D

**NEW QUESTION 61**

- (Exam Topic 1)

Which Windows feature allows secure printing over the Internet?

- A. Secure Transfer Protocol (STP)
- B. Internet Printing Protocol (IPP) by using HTTPS
- C. Voce over Internet Protocol (VoIP)
- D. Web2Print

**Answer:** B

**NEW QUESTION 62**

- (Exam Topic 1)

You need to allow others to access your Windows 7 computer by using the Remote Desktop connection. What should you do?

- A. Click Turn on network discovery in Network and Sharing Center.
- B. Enable Remote Desktop Connections in System Properties.
- C. Start the Remote Desktop Connection client in Accessories.
- D. Set the security level to medium in Internet Options.

**Answer:** B

**NEW QUESTION 64**

- (Exam Topic 1)

Which two steps should you perform to install a local printer that connects directly to your personal computer? (Each correct answer presents part of the solution. Choose two.)

- A. Connect the printer to an available USB port and allow Windows to locate and install the appropriate driver.
- B. Connect the Ethernet cable from your printer to the RJ45 connector on the personal computer and follow the Windows prompts.
- C. Follow the manufacturer's directions by using the installation CD provided along with the printer.
- D. Use the Add Network Printer feature from Control Panel.

**Answer:** AD

**NEW QUESTION 69**

- (Exam Topic 1)

You need to manage service dependencies on your Windows 7 computer. Which feature should you use?

- A. Action Center
- B. Event Viewer
- C. Task Scheduler
- D. Computer Management Console

**Answer:** D

**NEW QUESTION 73**

- (Exam Topic 1)

You have several active jobs in the print queue. You need to view the print queue. What should you do?

- A. Use the Printer icon on the system tray.

- B. Use the Windows Task Manager.
- C. Click the Print button in the application that is printing.
- D. Use the Computer Management console.

**Answer:** A

**NEW QUESTION 78**

- (Exam Topic 1)

You want to change your default home page in Internet Explorer. In which location should you modify settings?

- A. Trusted Sites
- B. View
- C. Internet Options
- D. Favorites

**Answer:** C

**NEW QUESTION 82**

- (Exam Topic 2)

Match the Device Manager icon description to its meaning.

To answer, drag the appropriate icon description from the column on the left to its meaning on the right. Each icon description may be used once, more than once, or not at all. Each correct match is worth one point.

Icons	Answer Area
black exclamation point on a yellow background	The device was manually disabled.
red X	A critical error has occurred and the device has been disabled by the operating system.
white circle with a black down arrow	The device is NOT functioning properly.

- A. Mastered
- B. Not Mastered

**Answer:** A

**Explanation:**

Icons	Answer Area	
black exclamation point on a yellow background	The device was manually disabled.	white circle with a black down arrow
red X	A critical error has occurred and the device has been disabled by the operating system.	red X
white circle with a black down arrow	The device is NOT functioning properly.	black exclamation point on a yellow background

**NEW QUESTION 83**

- (Exam Topic 2)

For each of the following statements, select Yes if the statement is true. Otherwise, select No, Each correct selection is worth one point.

**Answer Area**

	Yes	No
Use the Action Center option in the Control Panel System and Security area to troubleshoot system problems.	<input type="radio"/>	<input type="radio"/>
Use the System option in the Control Panel System and Security area to defragment a disk drive.	<input type="radio"/>	<input type="radio"/>
Use the Folder Options selection in the Control Panel Appearance and Personalization area to have file extensions appear in Windows Explorer.	<input type="radio"/>	<input type="radio"/>

- A. Mastered
- B. Not Mastered

**Answer:** A

**Explanation:**

**Answer Area**

	Yes	No
Use the Action Center option in the Control Panel System and Security area to troubleshoot system problems.	<input checked="" type="radio"/>	<input type="radio"/>
Use the System option in the Control Panel System and Security area to defragment a disk drive.	<input type="radio"/>	<input checked="" type="radio"/>
Use the Folder Options selection in the Control Panel Appearance and Personalization area to have file extensions appear in Windows Explorer.	<input checked="" type="radio"/>	<input type="radio"/>

**NEW QUESTION 84**

- (Exam Topic 2)

You want to use your home computer to access your work computer.

Which two actions should you perform before connecting the computers? (Each correct answer presents part of the solution. Choose two.)

- A. Obtain the IP address of the work computer.
- B. Obtain the IP address of the home computer.

- C. Obtain the MAC address of the home computer.
- D. Allow Remote Desktop on the home computer.
- E. Allow Remote Desktop on the work computer,
- F. Obtain the MAC address of the work computer.

Answer: DE

NEW QUESTION 85

- (Exam Topic 2)

Your roommate has a laptop with Windows 7. Updates install automatically. Several months ago, your roommate accidentally hid several Windows updates. Now your roommate wants to install them. You need to unhide these updates in Windows Update so the computer can install them. What should you do?

- A. Unhide the updates from the Change Settings window.
- B. Restore hidden updates from the View Update History window.
- C. Check for new updates and include hidden updates.
- D. Unhide the updates from the Restore Hidden Updates window.

Answer: B

NEW QUESTION 90

- (Exam Topic 2)

You want to upgrade your computer from Windows 8.1 to Windows 10. What is the minimum processor speed required to run a 64-bit version of Windows 10?

- A. 1.2 GHz
- B. 1.8 GHz
- C. 800 MHz
- D. 1.0 GHz

Answer: D

Explanation:

References:  
<https://www.microsoft.com/en-gb/windows/windows-10-specifications>

NEW QUESTION 93

- (Exam Topic 2)

For each of the following statements, select Yes if the statement is true. Otherwise, select No. Each correct selection is worth one point.

Answer Area

	Yes	No
Users logged in to Windows 7 as administrators are given a standard user token in addition to their administrator token.	<input type="radio"/>	<input type="radio"/>
A standard user account is able to make changes to services or drivers that affect other users of the computer.	<input type="radio"/>	<input type="radio"/>
To make changes to how UAC operates, you must be logged in as an administrator.	<input type="radio"/>	<input type="radio"/>

- A. Mastered
- B. Not Mastered

Answer: A

Explanation:

Answer Area

	Yes	No
Users logged in to Windows 7 as administrators are given a standard user token in addition to their administrator token.	<input checked="" type="radio"/>	<input type="radio"/>
A standard user account is able to make changes to services or drivers that affect other users of the computer.	<input type="radio"/>	<input checked="" type="radio"/>
To make changes to how UAC operates, you must be logged in as an administrator.	<input checked="" type="radio"/>	<input type="radio"/>

NEW QUESTION 94

- (Exam Topic 2)

This question requires that you evaluate the underlined text to determine if it is correct.  
To actively scan for spyware and viruses, you should ensure Action Center is installed and running. Select the correct answer if the underlined text does not make the statement correct. Select "No change is needed" if the underlined text makes the statement correct.

- A. Windows Defender
- B. The Malicious Software Removal Tool
- C. Microsoft Security Essentials
- D. No change is needed.

Answer: C

NEW QUESTION 96

- (Exam Topic 2)

Match the Windows feature to its corresponding usage.  
To answer, drag the appropriate Windows feature from the column on the left to its corresponding usage on the right Each Windows feature may be used once, more than once, or not at all. Each correct match is worth one point.

Windows features

Windows Media Player

Windows Media Center

IPCONFIG

Snipping Tool

MSCONFIG

Answer Area

enables screen capture and editing of the captured image

troubleshoots, enables, and disables startup services

requires use of the command prompt

enables media playback, DVR functionality, HDTV capability, and watching live TV

Windows feature

Windows feature

Windows feature

Windows feature

- A. Mastered
- B. Not Mastered

Answer: A

Explanation:

Windows features

Windows Media Player

Windows Media Center

IPCONFIG

Snipping Tool

MSCONFIG

Answer Area

enables screen capture and editing of the captured image

troubleshoots, enables, and disables startup services

requires use of the command prompt

enables media playback, DVR functionality, HDTV capability, and watching live TV

Snipping Tool

MSCONFIG

IPCONFIG

Windows Media Center

NEW QUESTION 100

- (Exam Topic 2)

How can you create a connection to a network share without having to type its network address each time you need to connect?

- A. Add the computer to the shared workgroup.
- B. Add a Network Location.
- C. Map a network drive.
- D. Create a HomeGroup.

**Answer:** C

#### **NEW QUESTION 101**

- (Exam Topic 2)

Windows presents a UAC prompt when you configure:

- A. Battery power options
- B. The desktop background
- C. Automatic updates
- D. Accessibility options

**Answer:** C

#### **NEW QUESTION 103**

- (Exam Topic 2)

You want to configure Windows to periodically and automatically check for the most recent driver for your video card Which Windows feature should you use?

- A. Windows Update
- B. Device Manager
- C. Windows Installer
- D. Programs and Features

**Answer:** A

#### **NEW QUESTION 106**

- (Exam Topic 2)

After you remove malicious software from an infected computer, the user still experiences problems. When the user opens the browser, it redirects to compromised websites.

You need to troubleshoot the problem.

Which three areas should you investigate? (Choose three.)

- A. The system's hosts file
- B. The proxy settings
- C. The Windows Action Center
- D. The browser's security zone settings
- E. The browser's home page setting

**Answer:** CDE

#### **NEW QUESTION 107**

- (Exam Topic 2)

You want to share a document with everyone on your school network. Which Windows 7 feature should you use?

- A. Map Network Drive
- B. Public Folder
- C. Computer Management Console
- D. Documents Library

**Answer:** B

#### **NEW QUESTION 112**

- (Exam Topic 2)

The School of Fine Art has a lounge with five computers for visitors to use. You need to configure the computers to improve accessibility.

You open Control Panel and see what is shown in the following image:



Use the drop-down menus to select the answer choice that completes each statement. Each correct selection is worth one point.

Answer Area

Configure [answer choice] to adjust the default volume for the hearing impaired.

Configure [answer choice] to enhance the display to be optimized for the vision impaired.

Answer Area

Configure [answer choice] to adjust the default volume for the hearing impaired.   
 Appearance and Personalization  
 Hardware and Sound  
 System and Security

Configure [answer choice] to enhance the display to be optimized for the vision impaired.   
 Ease of Access  
 Programs  
 System and Security

- A. Mastered
- B. Not Mastered

**Answer: A**

**Explanation:**

Configure [answer choice] to adjust the default volume for the hearing impaired.  
 Hardware and Sound  
 Configure [answer choice] to enhance the display to be optimized for the visually impaired.  
 Ease of Access

**NEW QUESTION 116**

- (Exam Topic 2)

For each of the following statements, select Yes if the statement is true. Otherwise, select No. Each correct selection is worth one point.

Answer Area

	Yes	No
NTFS and FAT32 both support a file size of over 4 GB.	<input type="radio"/>	<input type="radio"/>
NTFS and FAT32 can both use permissions and encryption.	<input type="radio"/>	<input type="radio"/>
NTFS and FAT32 can both be used as the format for Windows 7.	<input type="radio"/>	<input type="radio"/>

- A. Mastered
- B. Not Mastered

Answer: A

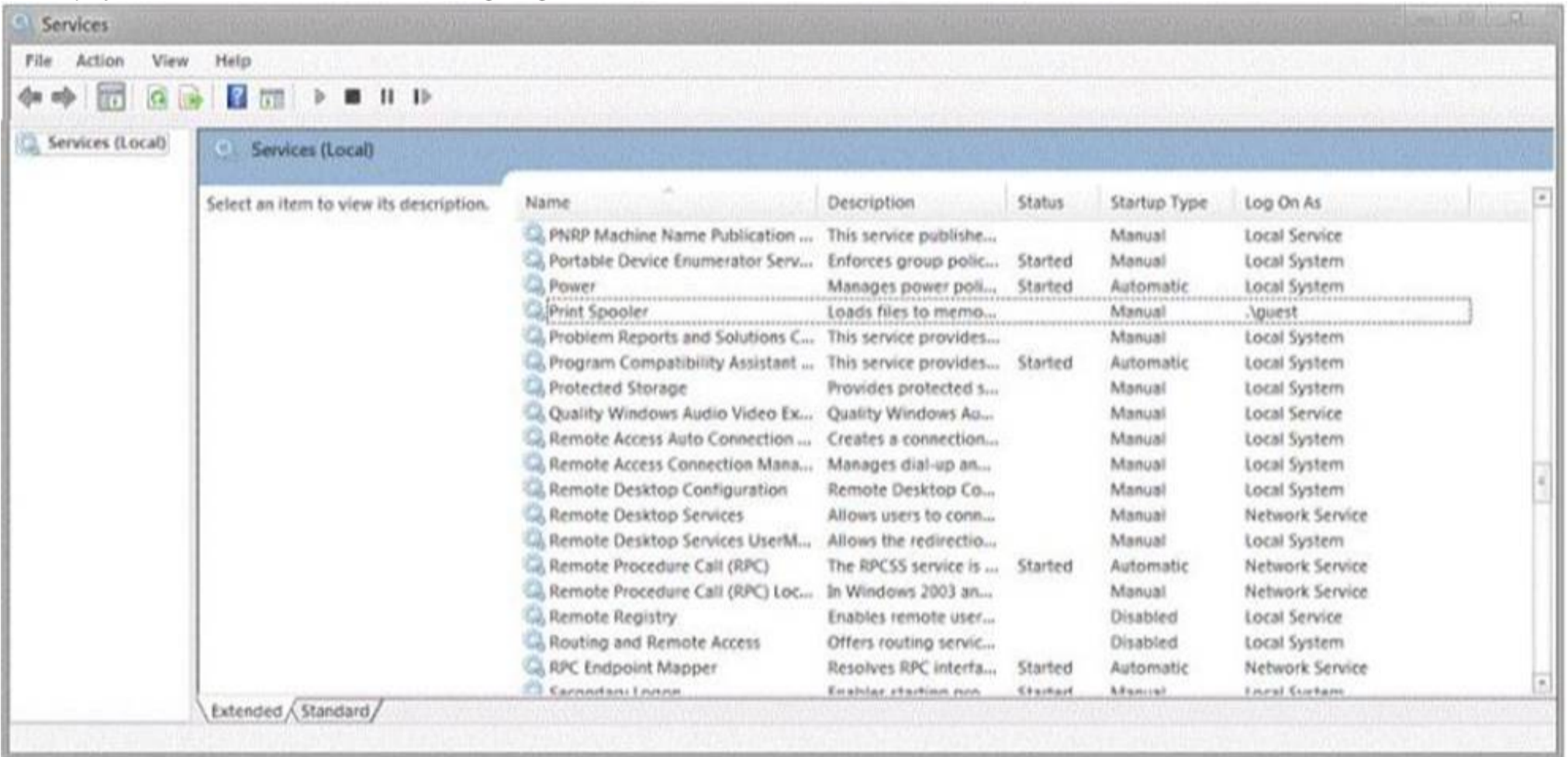
Explanation:

Answer Area		Yes	No
NTFS and FAT32 both support a file size of over 4 GB.	<input type="radio"/>	<input checked="" type="radio"/>	
NTFS and FAT32 can both use permissions and encryption.	<input type="radio"/>	<input checked="" type="radio"/>	
NTFS and FAT32 can both be used as the format for Windows 7.	<input checked="" type="radio"/>	<input type="radio"/>	

NEW QUESTION 120

- (Exam Topic 2)

During your summer job at Lucerne Publishing, an employee's computer is infected by a virus, which is then removed. However, this virus made changes to a service on the computer, and now the employee is unable to print or even see networked printers. The employee's services are shown in the following image:



Use the drop-down menus to select the answer choice that completes each statement. Each correct selection is worth one point.

Answer Area

Set the Print Spooler service to a startup type of [answer choice]

Set the Print Spooler service to the [answer choice] level of privileges.

Answer Area

Set the Print Spooler service to a startup type of [answer choice]

Set the Print Spooler service to the [answer choice] level of privileges.

- A. Mastered
- B. Not Mastered

**Answer:** A

**Explanation:**

**Answer Area**

Set the Print Spooler service to a startup type of [answer choice]

Automatic.  
Manual.  
Disabled.

Set the Print Spooler service to the [answer choice] level of privileges.

Local System  
Local Service  
Network Service

**NEW QUESTION 121**

- (Exam Topic 2)

You need to find out the speed of the processor that your Windows 7 computer is running. What should you do?

- A. From Hardware and Sound, select Devices and Printers
- B. From System and Security, select System.
- C. From Administrative Tools, select Event Viewer.
- D. From Administrative Tools, select Services.

**Answer:** B

**NEW QUESTION 123**

- (Exam Topic 2)

Where should you configure settings to allow Workgroup users to use a printer connected to your computer?

- A. In the System Configuration Utility
- B. In the Computer Management console
- C. In the Network and Sharing Center
- D. In the Local Security Policy editor

**Answer:** C

**NEW QUESTION 125**

- (Exam Topic 2)

You install Windows 7. When you restart your computer, Windows 7 fails to start. Which tool should you use to diagnose the problem?

- A. Windows Recovery Environment
- B. Windows Update
- C. Last Known Good Configuration
- D. Windows Easy Transfer

**Answer:** A

**NEW QUESTION 130**

- (Exam Topic 2)

For each of the following statements, select Yes if the statement is true. Otherwise, select No. Each correct selection is worth one point.

**Answer Area**

	Yes	No
A Windows 7 library can display files from various locations on your computer, files from various locations across several computers on the same network, and files from various Internet locations.	<input type="radio"/>	<input type="radio"/>
When a location is added to an existing Windows 7 library, the contents of the added location are automatically copied to the library.	<input type="radio"/>	<input type="radio"/>
A Windows 7 library can include folders located on a CD or DVD.	<input type="radio"/>	<input type="radio"/>

- A. Mastered
- B. Not Mastered

**Answer:** A

**Explanation:**

**Answer Area**

	Yes	No
A Windows 7 library can display files from various locations on your computer, files from various locations across several computers on the same network, and files from various Internet locations.	<input type="radio"/>	<input checked="" type="radio"/>
When a location is added to an existing Windows 7 library, the contents of the added location are automatically copied to the library.	<input type="radio"/>	<input checked="" type="radio"/>
A Windows 7 library can include folders located on a CD or DVD.	<input type="radio"/>	<input checked="" type="radio"/>

**NEW QUESTION 132**

- (Exam Topic 2)

Which Windows 7 edition is NOT available through retail and requires special Microsoft licensing?

- A. Windows 7 Ultimate
- B. Windows 7 Professional
- C. Windows 7 Premium
- D. Windows 7 Enterprise

**Answer:** D

**NEW QUESTION 136**

- (Exam Topic 2)

For each of the following statements, select Yes if the statement is true. Otherwise, select No. Each correct selection is worth one point.

**Answer Area**

	Yes	No
NTFS and FAT32 both support a file size of over 4 GB.	<input type="radio"/>	<input type="radio"/>
NTFS and FAT32 can both use permissions and encryption.	<input type="radio"/>	<input type="radio"/>
NTFS and FAT32 can both be used as the format for Windows 7.	<input type="radio"/>	<input type="radio"/>

- A. Mastered
- B. Not Mastered

**Answer:** A

**Explanation:**

**Answer Area**

	Yes	No
NTFS and FAT32 both support a file size of over 4 GB.	<input type="radio"/>	<input checked="" type="radio"/>
NTFS and FAT32 can both use permissions and encryption.	<input type="radio"/>	<input checked="" type="radio"/>
NTFS and FAT32 can both be used as the format for Windows 7.	<input checked="" type="radio"/>	<input type="radio"/>

**NEW QUESTION 138**

- (Exam Topic 2)

Microsoft Management Console has snap-ins that are used to manage:

- A. Contacts, calendars, and other data in the cloud.
- B. Hardware, software, and network components on a computer.
- C. Restore points for recovery.
- D. IP addresses on a peer-to-peer network.

**Answer:** B

**NEW QUESTION 140**

- (Exam Topic 2)

You are an intern at Lucerne Publishing.

The company needs to use multiple versions of Microsoft Office on each machine in the editing department. Which virtualization strategy should the company use?

- A. RDP
- B. App-V
- C. Windows XP Mode
- D. VDI

**Answer:** B

**NEW QUESTION 142**

- (Exam Topic 2)

You need to find out if your Windows XP computer is capable of running Windows 7. Which tool should you use?

- A. Windows Easy Transfer
- B. Windows Upgrade Advisor
- C. Application Compatibility Toolkit
- D. Windows 7 Compatibility Checker

**Answer:** B

**NEW QUESTION 143**

- (Exam Topic 2)

Your roommate has a Windows 8.1 32-bit laptop and wants to upgrade it to Windows 10 64-bit.

What should you tell her about such upgrade?

- A. You need to upgrade the existing operating system, preserving the files, applications, and settings.
- B. You need to perform a new installatio
- C. Files, applications, and settings will be deleted.
- D. You cannot upgrade Windows 8.1 32-bit to Windows 10 64-bit.
- E. You need to upgrade to Windows 8.1 64-bit and then upgrade to Windows 10 64-bit.

**Answer:** B

**Explanation:**

References:<http://www.intowindows.com/upgrade-to-windows-10-64-bit-from-windows-78-1-32/>

**NEW QUESTION 147**

- (Exam Topic 2)

You have an internship at a company that wants you to help deploy Windows 7 to a dozen computers. The company uses the Microsoft Deployment Toolkit instead of System Center Configuration Manager.

Which three migration methods are possible? (Choose three.)

- A. LTI
- B. HTTP
- C. USB
- D. UDI
- E. ZTI

**Answer:** BCD

**NEW QUESTION 152**

- (Exam Topic 2)

You are preparing to install Windows 7 on a new computer. You need to enable BitLocker for encryption. What is required in order to enable BitLocker?

- A. FAT32 system drive
- B. Smart card
- C. NTFS system drive
- D. Trusted Platform Module (TPM)

**Answer:** C

**NEW QUESTION 155**

- (Exam Topic 2)

You work for the school library. You are instructed to upgrade all of the library's Windows 8.1 devices to Windows 10 64-bit.

What is the minimum memory the devices must have for you to be able to install Windows 10 64-bit?

- A. 8 GB
- B. 4 GB
- C. 1 GB
- D. 2 GB

**Answer:** D

**Explanation:**

References:

<https://www.microsoft.com/en-gb/windows/windows-10-specifications>

#### NEW QUESTION 158

- (Exam Topic 2)

Instructions: For each of the following statements, select Yes if the statement is true. Otherwise, select No. NOTE: Each correct selection is worth one point.

	Yes	No
The Hyper-V role can be installed on Windows 10 Home.	<input type="radio"/>	<input type="radio"/>
Hyper-V virtual machines can only run Microsoft operating systems.	<input type="radio"/>	<input type="radio"/>
A private, virtual network can be created among virtual machines.	<input type="radio"/>	<input type="radio"/>

- A. Mastered
- B. Not Mastered

**Answer:** A

**Explanation:**

References: <https://docs.microsoft.com/en-us/virtualization/hyper-v-on-windows/quick-start/enable-hyper-v> [https://docs.microsoft.com/en-us/windows-server/virtualization/hyper-v/Supported-Linux-and-FreeBSD-virtual for-Hyper-V-on-Windows](https://docs.microsoft.com/en-us/windows-server/virtualization/hyper-v/Supported-Linux-and-FreeBSD-virtual-for-Hyper-V-on-Windows)  
<https://docs.microsoft.com/en-us/virtualization/hyper-v-on-windows/quick-start/connect-to-network>

#### NEW QUESTION 163

- (Exam Topic 2)

Your friend asks for your help with upgrading his computer to Windows 10. You plan to perform a clean install of Windows 10 on his computer, which has Windows 8.1 installed.

What should you tell your friend he will be able to find on the computer's hard drive after the installation is complete?

- A. previous Windows8.1 installation
- B. backup copy of all personal files
- C. user profiles migrated to Windows 10
- D. Windows 10 installation files

**Answer:** D

**Explanation:**

References: <https://www.cnet.com/how-to/clean-install-windows-10/>

#### NEW QUESTION 165

- (Exam Topic 2)

What is a reason to use FAT32 as the file system for Windows 7?

- A. To have support for files larger than 4 GB
- B. To recover disk errors automatically
- C. To dual boot with an older version of Windows
- D. To set file permissions

**Answer:** C

#### NEW QUESTION 168

- (Exam Topic 2)

For each of the following statements, select Yes if the statement is true. Otherwise, select No. Each correct selection is worth one point.

Answer Area	Yes	No
Installing Windows XP Mode requires a separate license for Windows XP.	<input type="radio"/>	<input type="radio"/>
Programs from an XP Mode installation display in both the Windows 7 list of programs and the XP Mode list of programs.	<input type="radio"/>	<input type="radio"/>
Windows XP Mode is available for Windows 7 Home.	<input type="radio"/>	<input type="radio"/>

- A. Mastered
- B. Not Mastered

Answer: A

Explanation:

Answer Area	Yes	No
Installing Windows XP Mode requires a separate license for Windows XP.	<input type="radio"/>	<input checked="" type="radio"/>
Programs from an XP Mode installation display in both the Windows 7 list of programs and the XP Mode list of programs.	<input checked="" type="radio"/>	<input type="radio"/>
Windows XP Mode is available for Windows 7 Home.	<input type="radio"/>	<input checked="" type="radio"/>

NEW QUESTION 170

- (Exam Topic 2)  
This QUESTION requires that you evaluate the underlined text to determine if it is correct.  
Running Windows Update will automatically download and install device drivers for Bluetooth devices. Instructions: Review the underlined text. If it makes the statement correct, select “No change is needed.” If the statement is incorrect, select the answer choice that makes the statement correct.

- A. Device Manager
- B. Hardware Wizard
- C. No change is needed.
- D. Bluetooth Support Service

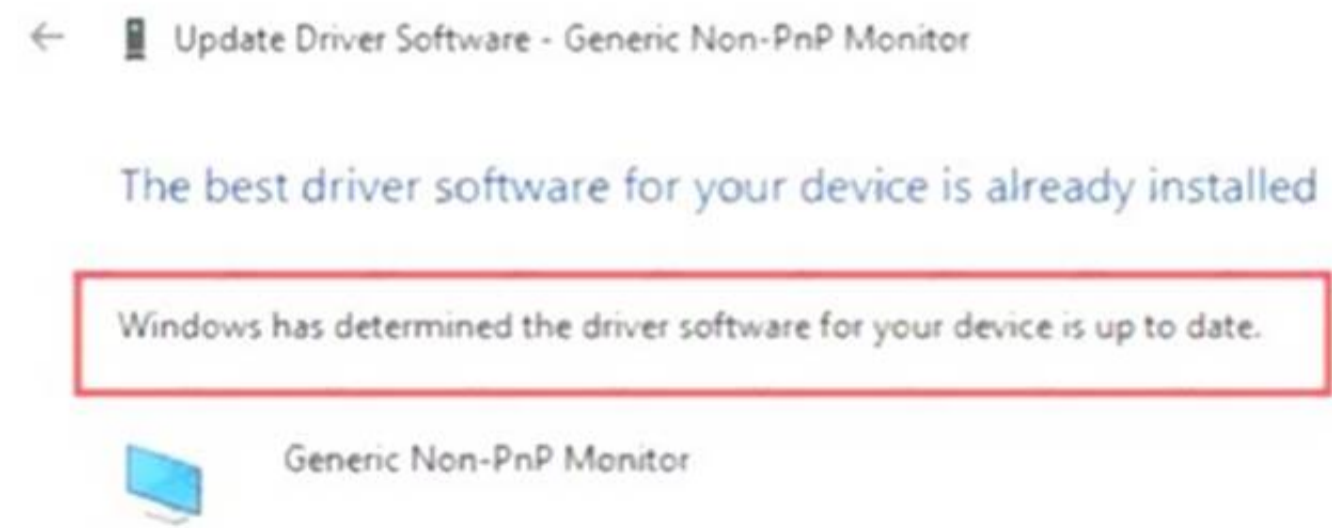
Answer: C

Explanation:

References:<https://support.microsoft.com/en-za/help/4028443/windows-update-drivers-in-windows-10>

NEW QUESTION 171

- (Exam Topic 2)  
You install a new monitor to your Windows 10 computer.  
The following graphic shows the driver recommendations for the monitor.



Instructions: Use the drop-down menus to select the answer choice that completes each statement based on the information presented in the graphic.  
NOTE: Each correct selection is worth one point.

Why did the system choose this driver as the best available?

Choose One...

Windows 10 cannot identify the monitor and has installed the default driver.
Windows 10 does not have the drivers for the monitor as part of the auto update feature.
Windows 10 does not support the monitor, and a generic driver must be used.

How can you update the monitor device driver to properly support the make and model?

Choose One...

Manually install the drivers.
Run Windows Update.
Restart the Windows 10 device.

- A. Mastered
- B. Not Mastered

**Answer:** A

**Explanation:**

Why did the system choose this driver as the best available?

Choose One...

Windows 10 cannot identify the monitor and has installed the default driver.
Windows 10 does not have the drivers for the monitor as part of the auto update feature.
Windows 10 does not support the monitor, and a generic driver must be used.

How can you update the monitor device driver to properly support the make and model?

Choose One...

Manually install the drivers.
Run Windows Update.
Restart the Windows 10 device.

#### NEW QUESTION 176

- (Exam Topic 2)

Your roommate is having problems with his computer. He cannot get Windows to boot up normally. You start the computer and press F8 to see the Advanced Boot Options.

You want to start the computer in a diagnostic mode that also has access to the Internet. Which boot option should you select?

- A. Safe Mode with Networking
- B. Start Windows Normally
- C. Safe Mode
- D. Safe Mode with Command Prompt

**Answer:** A

#### NEW QUESTION 180

- (Exam Topic 2)

Which two tools should you use to gather basic real-time performance information about the computer's system settings? (Choose two.)

- A. System Properties
- B. Task Manager
- C. System Information
- D. Resource Monitor
- E. Computer Management

**Answer:** BD

#### NEW QUESTION 182

- (Exam Topic 2)

A Windows 10 library:

- A. Organizes user files from disparate locations.
- B. Encrypts files by using the Encrypting File System (EFS).
- C. Makes copies of user files in a central location.
- D. Restores files from system backup.

**Answer:** A

**Explanation:**

References:<https://docs.microsoft.com/en-us/windows/client-management/windows-libraries>

#### NEW QUESTION 185

- (Exam Topic 2)

What is the largest single file that you can store on an NTFS file system?

- A. 4 TB
- B. 8 TB
- C. 16 TB
- D. 32 GB

**Answer:** C

**NEW QUESTION 186**

.....

## Thank You for Trying Our Product

### We offer two products:

1st - We have Practice Tests Software with Actual Exam Questions

2nd - Questions and Answers in PDF Format

### 98-349 Practice Exam Features:

- \* 98-349 Questions and Answers Updated Frequently
- \* 98-349 Practice Questions Verified by Expert Senior Certified Staff
- \* 98-349 Most Realistic Questions that Guarantee you a Pass on Your First Try
- \* 98-349 Practice Test Questions in Multiple Choice Formats and Updates for 1 Year

**100% Actual & Verified — Instant Download, Please Click**  
**[Order The 98-349 Practice Test Here](#)**