

Exam Questions MS-600

Building Applications and Solutions with Microsoft 365 Core Services

<https://www.2passeasy.com/dumps/MS-600/>



NEW QUESTION 1

- (Exam Topic 1)

Which URI should you use to query all the emails that relate to an invoice?

```
https://graph.microsoft.com/v1.0/me/messages?$search="{invoiceid}"

https://graph.microsoft.com/v1.0/me/messages?$subject eq {invoiceid}

https://graph.microsoft.com/v1.0/me/messages?${invoiceid}

https://graph.microsoft.com/v1.0/me/messages?$filter=contains(subject,{invoiceid})
```

- A. Option A
- B. Option B
- C. Option C
- D. Option D

Answer: A

NEW QUESTION 2

- (Exam Topic 1)

Which type of authentication flow should you recommend for the planned integration with Office 365?

- A. device code
- B. implicit grant
- C. authorization code
- D. client credentials

Answer: C

Explanation:

To use Microsoft Graph to read and write resources on behalf of a user, your app must get an access token from the Microsoft identity platform and attach the token to requests that it sends to Microsoft Graph.

One common flow used by native and mobile apps and also by some Web apps is the OAuth 2.0 authorization code grant flow.

Scenario: Email the generated invoices to customers on behalf of the current signed-in user. Any emails generated by the system will contain the invoiced.

Use Azure AD to manage identities, authentication, and authorization. Reference: <https://docs.microsoft.com/en-us/graph/auth-v2-user>

NEW QUESTION 3

- (Exam Topic 1)

What are two possible URIs that you can use to configure the content administration user interface? Each correct answer present a complete solution.

NOTE: Each correct selection is worth one point.

```
https://login.microsoftonline.com/common/adminconsent?client_id={clientid}

https://login.microsoftonline.com/{tenant}/oauth2/v2.0/token/authorize?client_id={clientid}&state={state}&redirect_uri={url}

https://login.microsoftonline.com/{tenant}/oauth2/v2.0/authorize?client_id={clientid}&state={state}&redirect_uri={url}

https://login.microsoftonline.com/{domain}/adminconsent?client_id={clientid}&state={state}&redirect_uri={url}
```

- A. Option A
- B. Option B
- C. Option C
- D. Option D

Answer: BC

NEW QUESTION 4

- (Exam Topic 1)

How can you validate that the JSON notification message is sent from the Microsoft Graph service?

- A. The ClientState must match the value provided when subscribing.
- B. The user_guid must map to a user ID in the Azure AD tenant of the customer.
- C. The tenant ID must match the tenant ID of the customer's Office 365 tenant.

D. The subscription ID must match the Azure subscription used by ADatum.

Answer: A

Explanation:

clientState specifies the value of the clientState property sent by the service in each notification. The maximum length is 128 characters. The client can check that the notification came from the service by comparing the value of the clientState property sent with the subscription with the value of the clientState property received with each notification.

Note: A subscription allows a client app to receive notifications about changes to data in Microsoft Graph. Reference: <https://docs.microsoft.com/en-us/graph/api/resources/subscription>

NEW QUESTION 5

- (Exam Topic 1)

You need to protect the backend web service to meet the technical requirements.

Which four actions should you perform in sequence? To answer, move the actions from the list of actions to the answer area and arrange them in the correct order.

Actions

Set the App ID URI for the backend web service application registration

Register an application in Azure AD for the backend web service

Define the scopes in the E-invoicing application registration

Register an application in Azure AD for E-invoicing. Grant admin consent to the E-invoicing application registration to the API scopes of the backend web service application registration

Define the scopes in the backend web service application registration

Answer Area

- A. Mastered
- B. Not Mastered

Answer: A

Explanation:

Here is a quick overview of the steps:

Step 1: Register an application in Azure AD for the backend web service Register an application (backend-app) in Azure AD to represent the API. Step 2: Set the App ID URI for the backend service application registration

When the application is created (step 1) select Expose an API and click on Save and continue to create an Application ID URI.

Step 3: Defend the scopes in the backend web service application registration

In the Add a scope page, create a new scope supported by the API. (e.g., Read) then click on Add scope to create the scope. Repeat this step to add all scopes supported by your API.

Step 4: Register an application in Azure AD for E-invoicing.

Step 4.1 Register another application in Azure AD to represent a client application

Step 4.2 Now that you have registered two applications to represent the API and the Developer Console, you need to grant permissions to allow the client-app to call the backend-app.

Scenario:

Secure access to the backend web service by using Azure AD

E- invoicing will have internal logic that will dynamically identify whether the user should be allowed to call the backend API.

Reference:

<https://docs.microsoft.com/en-us/azure/api-management/api-management-howto-protect-backend-with-aad>

NEW QUESTION 6

- (Exam Topic 2)

You are developing a server-based web app that will use OAuth2 on behalf of the user and will be registered with the Microsoft identity platform.

Which two types of token will the app retrieve as part of the authorization flow? Each correct answer presents part of the solution. NOTE: Each correct selection is worth one point.

- A. context token
- B. Kerberos token
- C. refresh token
- D. SAML token
- E. access token

Answer: BD

NEW QUESTION 7

- (Exam Topic 2)

You are developing a Microsoft Office Add-in for Microsoft Word. Which Office UI element can contain commands from the add-in?

- A. dialog boxes
- B. the Quick Access Toolbar (QAT)
- C. context menus
- D. task panes

Answer: A

NEW QUESTION 8

- (Exam Topic 2)

You are developing an application that will run as an overnight background service on a server. The service will access web-hosted resources by using the application's identity and the OAuth 2.0 client credentials grant flow.

You register the application and grant permissions. The tenant administrator grants admin consent to the application.

You need to get the access token from Azure Active Directory (Azure AD).

Which URI should you use for the POST request? To answer, select the appropriate options in the answer area.

NOTE: Each correct selection is worth one point.

```
https://login.microsoftonline.com/<TenantId>/oauth2/v2.0/  
?client_id=<ClientID>  
&client_secret=<ClientSecret>  
&scope=https://graph.microsoft.com/.default  
&grant_type=
```

authorization_code
client_credentials
on_behalf_of
refresh_token
urn:ietf:params:oauth:grant-type:jwt-bearer

	▼
authorize	
code	
keys	
token	

- A. Mastered
- B. Not Mastered

Answer: A

Explanation:

OAuth2 client_id client_secret

The authorization code flow begins with the client directing the user to the /authorize endpoint. Box 1: token

Use the authorization code to request an access token.

Now that you've acquired an authorization code and have been granted permission by the user, you can redeem the code for an access token to the desired resource, by sending a POST request to the /token endpoint:

Box 2: authorization_code

Use the authorization code to request an access token. Example:

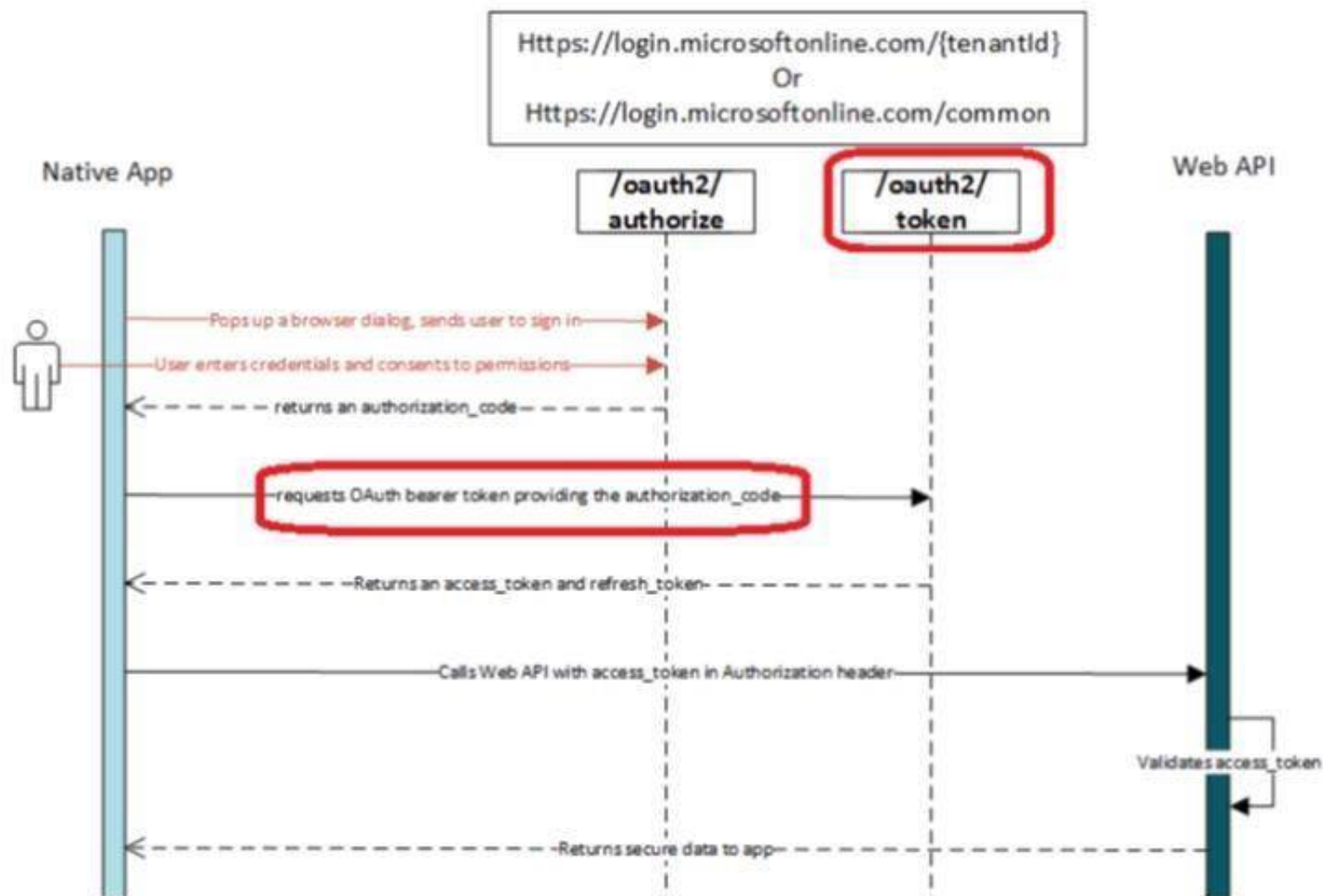
// Line breaks for legibility only

POST /{tenant}/oauth2/token HTTP/1.1 Host: https://login.microsoftonline.com

Content-Type: application/x-www-form-urlencoded grant_type=authorization_code

etc.

Note: At a high level, the entire authorization flow for an application looks a bit like this:



Reference: <https://docs.microsoft.com/en-us/azure/active-directory/develop/v1-protocols-oauth-code>

NEW QUESTION 9

- (Exam Topic 2)

You need to develop a client-side web app that will be registered with the Microsoft identity platform. Which type of authorization flow should you use?

- A. authorization code grant
- B. device code grant
- C. implicit grant
- D. client credentials grant

Answer: A

NEW QUESTION 10

- (Exam Topic 2)

You are developing a front end web app.

You want to display the current username as part of the user interface.

You need to retrieve the current username from Microsoft Graph by using a REST request. The solution must minimize the amount of information returned.

To which URI should you send the request?

- A. `https://graph.microsoft.com/v1.0/users/john@contoso.com/people?$select=displayName`
- B. `https://graph.microsoft.com/v1.0/me?$search=displayName`
- C. `https://graph.microsoft.com/v1.0/me`
- D. `https://graph.microsoft.com/v1.0/me?$select=displayName`

- A. Option A
- B. Option B
- C. Option C
- D. Option D

Answer: A

NEW QUESTION 10

- (Exam Topic 2)

You need to develop a SharePoint Framework (SPFx) solution that interacts with Microsoft SharePoint and Teams. The solution must share the same code base. What should you include in the solution?

- A. Include the Microsoft Authentication Library for .NET (MSALNET) in the solution.
- B. Grant admin consent to the Teams API.
- C. Make the code aware of the Teams context and the SharePoint context.
- D. Publish the solution to an Azure App Service.

Answer: A

NEW QUESTION 11

- (Exam Topic 2)

You are developing an Azure web app that will enable users to view a consolidated view of multiple users' tasks based on data in Microsoft Planner and Outlook. The app will use the Microsoft identity platform and a certificate to establish an authorization flow between the app and Microsoft 365.

You obtain a certificate and you create an Azure Active Directory (Azure AD) application. You need to set up authorization for the application.

Which three actions should you perform? Each correct answer presents part of the solution. NOTE: Each correct selection is worth one point. A. Add the application permissions to the Azure AD application.

- A. Create a secret in the Azure AD application.
- B. Add the required delegated permissions to the Azure AD application.
- C. Modify the code of the Azure web app to use the certificate to obtain an access token for Microsoft Graph.
- D. From the Azure portal, configure a certificate public key for the Azure AD application.

Answer: ACD

NEW QUESTION 15

- (Exam Topic 2)

This question requires that you evaluate the bold text to determine if it is correct.

You can use a Command Set extension to develop a breadcrumb element that will appear on every Microsoft SharePoint page.

Instructions: Review the underlined text. If it makes the statement correct, select “No change is needed”. If the statement is incorrect, select the answer choice that makes the statement correct.

- A. No change is needed
- B. an Application Customizer
- C. a Field Customizer
- D. a web part

Answer: B

Explanation:

Application Customizers provide access to well-known locations on SharePoint pages that you can modify based on your business and functional requirements. For example, you can create dynamic header and footer experiences that render across all the pages in SharePoint Online.

Reference:

<https://docs.microsoft.com/en-us/sharepoint/dev/spfx/extensions/get-started/using-page-placeholder-with-extens>

NEW QUESTION 20

- (Exam Topic 2)

You are building a server-based web app that will use OAuth2 and will be registered with the Microsoft identity platform.

Which two values does the app require to obtain tokens from the Azure Active Directory (Azure AD) authorization endpoint? Each correct answer presents part of the solution.

NOTE: Each correct selection is worth one point.

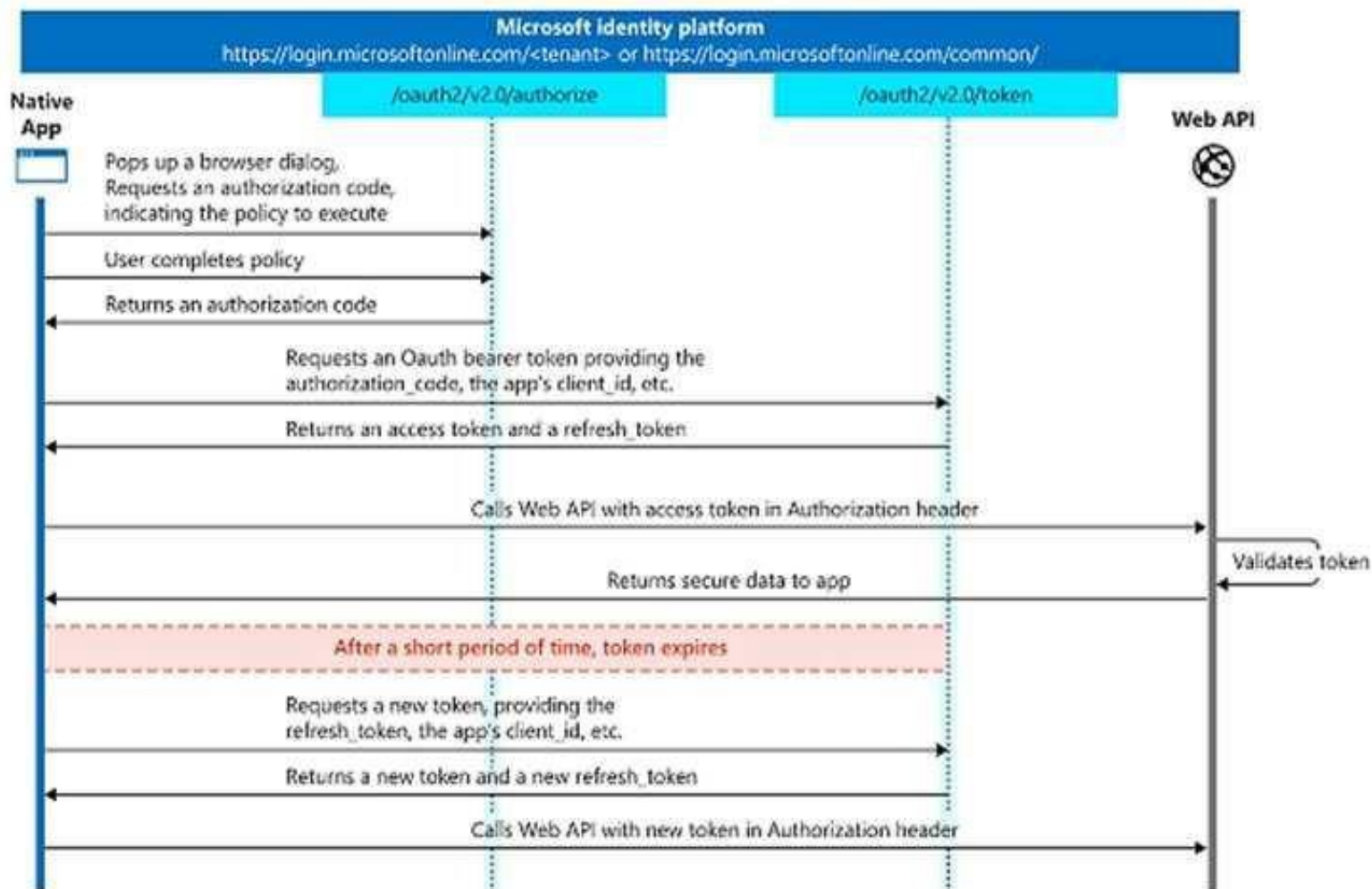
- A. the tenant ID
- B. the context token
- C. the application ID
- D. the application secret
- E. the authorization code

Answer: CE

Explanation:

C: The required client_id is the Application (client) ID that the Azure portal – App registrations experience assigned to your app.

E: The authorization code flow begins with the client directing the user to the /authorize endpoint.



Reference: <https://docs.microsoft.com/en-us/azure/active-directory/develop/v2-oauth2-auth-code-flow>

NEW QUESTION 22

- (Exam Topic 2)

Which tool can you use to generate a SharePoint Framework (SPFx) solution?

- A. Eclipse
- B. App Studio
- C. Yacc
- D. Yeoman

Answer: D

Explanation:

Yeoman helps you to kickstart new projects, prescribing best practices and tools to help you stay productive. Using the Yeoman SharePoint generator, developers are able to scaffold new client-side solution projects to build, package, and deploy SharePoint solutions. The generator provides common build tools, boilerplate code, and a common playground website to host web parts for testing. Reference:

<https://docs.microsoft.com/en-us/sharepoint/dev/spfx/toolchain/scaffolding-projects-using-yeomansharepoint-ge>

NEW QUESTION 26

- (Exam Topic 2)

You have an application that has the code shown in the exhibits. (Click the JavaScript Version tab or the C# Version tab.)

For each of the following statements, select Yes if the statement is true. Otherwise, select No. NOTE: Each correct selection is worth one point.

JavaScript Version

```

module.exports = function(context, myTrigger) {
    //...
    var group = {
        DisplayName: groupTitle,
        GroupTypes: ["Unified"],
        MailEnabled: true,
        SecurityEnabled: false,
        Visibility: "Private"
    };
    client.api('/groups').post(group).then((groupResult) => {
        client.api('/users/${userName}').get().then((userResult) => {
            var user = {
                "@odata.id": 'https://graph.microsoft.com/v1.0/directoryObjects/${userResult.Id}'
            };
            client.api('/groups/${groupResult.Id}/members/${ref}').post(user).then(() => {
                context.done();
            });
        });
    });
};

```

C# Version

```
namespace MyProject
{
    public static class MainActivity
    {
        [FunctionName(nameof(MainActivity))]
        public static async Task Run([ActivityTrigger] string accessToken, string userEmail, string groupTitle)
        {
            var client = new GraphServiceClient(new GraphAuthProvider(accessToken));
            var group = new Group
            {
                DisplayName = groupTitle,
                GroupTypes = new string[] { "Unified" },
                MailEnabled = true,
                SecurityEnabled = false,
                Visibility = "Private"
            };
            var createdGroup = await client.Groups.Request().AddAsync(group);
            var user = await client.Users[userEmail].Request().GetAsync();
            await client.Groups[createdGroup.Id].Members.References.Request().AddAsync(user);
        }
    }
}
```

Statements	Yes	No
The code creates a unified group in Microsoft Office 365.	<input type="radio"/>	<input type="radio"/>
The code adds a member to a group.	<input type="radio"/>	<input type="radio"/>
The code adds an owner to a group.	<input type="radio"/>	<input type="radio"/>
The code creates a team in Microsoft Teams.	<input type="radio"/>	<input type="radio"/>

- A. Mastered
 B. Not Mastered

Answer: A

Explanation:

Box 1: Yes

Unified is specified in the code.

Note: You can create the following types of groups: Office 365 group (unified group)

Security group Box 2: Yes

A member is added to the group. Box 3: No

Box 4: No

Reference: <https://docs.microsoft.com/en-us/graph/api/group-post-groups>

NEW QUESTION 29

- (Exam Topic 2)

You are developing a mobile application that will display the current signed-in user's display name and the application settings. The application settings are stored as Microsoft graph extension of the user profile.

Users of the application have intermittent network connectivity.

You need to retrieve the least amount of data by using a single REST request. The solution must minimize network traffic.

Which URI Should you use to retrieve the data?

[https://graph.microsoft.com/v1.0/me?\\$select=displayName,userType&\\$expand=extensions](https://graph.microsoft.com/v1.0/me?$select=displayName,userType&$expand=extensions)

[https://graph.microsoft.com/v1.0/me?\\$select=displayName,id&\\$expand=extensions](https://graph.microsoft.com/v1.0/me?$select=displayName,id&$expand=extensions)

<https://graph.microsoft.com/v1.0/me>

[https://graph.microsoft.com/v1.0/me?\\$expand=extensions](https://graph.microsoft.com/v1.0/me?$expand=extensions)

- A. Option A
 B. Option B
 C. Option C
 D. Option D

Answer: C

NEW QUESTION 31

- (Exam Topic 2)

You develop a web API named WebApi1.

When validating a token received from a client application, WebApi1 receives a MsalUiRequiredException exception from Azure Active Directory (Azure AD).

You need to formulate the response that WebApi1 will return to the client application. Which HTTP response should you send?

- A. HTTP 307 Temporary Redirect
- B. HTTP 400 Bad Request
- C. HTTP 403 Forbidden
- D. HTTP 412 Precondition Failed

Answer: D

Explanation:

The HyperText Transfer Protocol (HTTP) 412 Precondition Failed client error response code indicates that access to the target resource has been denied. This happens with conditional requests on methods other than GET or HEAD when the condition defined by the If-Unmodified-Since or If-None-Match headers is not fulfilled. In that case, the request, usually an upload or a modification of a resource, cannot be made and this error response is sent back.

MsalUiRequiredException

The "Ui Required" is proposed as a specialization of MsalServiceException named MsalUiRequiredException. This means you have attempted to use a non-interactive method of acquiring a token (e.g. AcquireTokenSilent), but MSAL could not do it silently. this can be because:

- > you need to sign-in
- > you need to consent
- > you need to go through a multi-factor authentication experience.

The remediation is to call AcquireTokenInteractive try

```
{
app.AcquireTokenXXX(scopes, account) WithYYYY(...)
ExecuteAsync()
}
catch(MsalUiRequiredException ex)
{
app.AcquireTokenInteractive(scopes) WithAccount(account)
WithClaims(ex.Claims) ExcecuteAsync();
}
```

NEW QUESTION 32

- (Exam Topic 2)

For each of the following statements, select Yes if the statement is true. Otherwise, select No.

NOTE: Each correct selection is worth one point.

Statements	Yes	No
You can use the Adaptive Cards Designer to create Microsoft Outlook actionable messages.	<input type="radio"/>	<input type="radio"/>
Microsoft Outlook actionable messages are written in JSON.	<input type="radio"/>	<input type="radio"/>
You need Azure Active Directory (Azure AD) tenant admin privileges to enable Microsoft Outlook actionable messages.	<input type="radio"/>	<input type="radio"/>

- A. Mastered
- B. Not Mastered

Answer: A

Explanation:

Box 1: Yes

The Adaptive Cards Designer provides a drag-and-drop experience to quickly build and tweak adaptive cards. Outlook Actionable Messages cards are designed using the Adaptive Card format. The Adaptive Card format

is a simple yet powerful declarative layout format that provides a lot of flexibility, allowing for visually rich cards. In this topic we'll cover the Outlook-specific features of the Adaptive Card format.

Box 2: Yes

The actionable message card is in JSON format. Box 3: No

By default, the Tenant Administrator can create, edit, clone, and delete tenants, and manage user accounts. Note:

To enable Actionable Messages the recipient of the task must be an Office 365 customer with permissions for the SharePoint online site.

No: Office 365 administrators can disable actionable messages via the Set-OrganizationConfig cmdlet. If actionable messages do not render, check with your administrator to make sure the feature is enabled in your organization.

Adaptive Cards Designer Microsoft outlook actionable messages

References: <https://docs.microsoft.com/en-us/outlook/actionable-messages/adaptive-card> <https://gingkoapp.com/create-tenant-administrator.html>

NEW QUESTION 37

- (Exam Topic 2)

You have an application that employees use to schedule vacations. The application sets an automatic reply and an out-of-office event in the employees' Microsoft 365 calendar.

Employees who access the application from a mobile device report that the application is slow to make changes.

You need to replace the application calls to use batched request. Automatic reply must be set only if an out-of-office event is set successfully.

How should you complete the batch request? To answer, select the appropriate options in the answer area.

Answer Area

DELETE
GET
HEAD
PATCH
POST
PUT

https://graph.microsoft.com/v1.0/\$batch

These are the selections for the first missing value:
application/json

```
{
  "requests": [
    {
      "id": "1",
      "method": "DELETE",
      "url": "/me/event",
      "body": {
        "subject": "Vacation",
        "showAs": "off",
        "start": {
          "dateTime": "2019-08-27T14:49:06.595Z",
          "timeZone": "UTC"
        },
        "headers": {
          "Content-Type": "application/json"
        }
      },
    },
    {
      "id": "2",
      "dependsOn": [
        "1",
        "2"
      ],
      "url": "/me/mail",
      "method": "POST",
      "body": {
        "automaticRepliesSetting": {
          "status": "Scheduled",
          "scheduledStartTime": {
            "dateTime": "2020-03-20T18:00:00.0000000",
            "timeZone": "UTC"
          },
          "scheduledEndTime": {
            "dateTime": "2020-03-26T18:00:00.0000000",
            "timeZone": "UTC"
          }
        },
        "headers": {
          "Content-Type": "application/json"
        }
      },
    }
  ]
}
```

- A. Mastered
- B. Not Mastered

Answer: A

Explanation:

Answer Area

DELETE

GET

HEAD

PATCH

POST

PUT

https://graph.microsoft.com/v1.0/\$batch

There are the selections for the first missing value.
application/json

```
"requests": [
  {
    "id": "1",
    "method": "DELETE",
    "url": "/me/event",
    "body": {
      "subject": "on vacation",
      "showAs": "off",
      "start": {
        "dateTime": "2019-08-27T14:49:06.5952",
        "timeZone": "UTC"
      },
      "headers": {
        "Content-Type": "application/json"
      }
    },
    {
      "id": "2",
      "dependsOn": [1],
      "url": "/me/mailFolders/{2}/messages/{1,2}",
      "method": "POST",
      "body": {
        "automaticRepliesSetting": {
          "status": "Scheduled",
          "scheduledStartDateTime": {
            "dateTime": "2020-03-20T18:00:00.0000000",
            "timeZone": "UTC"
          },
          "scheduledEndDateTime": {
            "dateTime": "2020-03-28T18:00:00.0000000",
            "timeZone": "UTC"
          }
        },
        "headers": {
          "Content-Type": "application/json"
        }
      }
    }
  ]
}
```

NEW QUESTION 39

- (Exam Topic 2)

For each of the following statements, select Yes if the statement is true. Otherwise, select NO. NOTE: Each correct selection is worth one point.

Answer Area	Statements	Yes	No
	Search-based messaging extensions can query a third-party service and show the information on a card.	<input type="radio"/>	<input type="radio"/>
	Search-based messaging extensions can use the Bot Framework to interact with third-party applications.	<input type="radio"/>	<input type="radio"/>
	Search-based messaging extensions can be used to display information on a tab.	<input type="radio"/>	<input type="radio"/>

- A. Mastered
- B. Not Mastered

Answer: A

Explanation:

Answer Area

Statements	Yes	No
Search-based messaging extensions can query a third-party service and show the information on a card.	<input type="radio"/>	<input checked="" type="radio"/>
Search-based messaging extensions can use the Bot Framework to interact with third-party applications.	<input type="radio"/>	<input checked="" type="radio"/>
Search-based messaging extensions can be used to display information on a tab.	<input checked="" type="radio"/>	<input type="radio"/>

NEW QUESTION 41

- (Exam Topic 2)

You are developing a SharePoint Framework (SPFx) web part. The web part will call a backed API that is secured by using Azure Active Directory (Azure AD). The web part will be on a page that has many other web parts.

Which type of web part should you use ensure that access to the exclusive to the web part?

- A. Provider-hosted
- B. SharePoint-hosted
- C. Domain isolated
- D. Connected

Answer: A

NEW QUESTION 43

- (Exam Topic 2)

For each of the following statements, select Yes if the statement is true. Otherwise, select No. NOTE: Each correct select is worth one point.

Answer Area

Statements	Yes	No
A Microsoft Office Web Add-in can be scaffolded by using a Yeoman generator.	<input type="radio"/>	<input type="radio"/>
Microsoft Office Web Add-ins can be developed by using C#.	<input type="radio"/>	<input type="radio"/>
The code for a Microsoft Office Web Add-in has access to the local file system of a device.	<input type="radio"/>	<input type="radio"/>

- A. Mastered
- B. Not Mastered

Answer: A

Explanation:

Answer Area

Statements	Yes	No
A Microsoft Office Web Add-in can be scaffolded by using a Yeoman generator.	<input checked="" type="radio"/>	<input type="radio"/>
Microsoft Office Web Add-ins can be developed by using C#.	<input checked="" type="radio"/>	<input type="radio"/>
The code for a Microsoft Office Web Add-in has access to the local file system of a device.	<input checked="" type="radio"/>	<input type="radio"/>

NEW QUESTION 44

- (Exam Topic 2)

Note: This question is part of a series of questions that present the same scenario. Each question in the series contains a unique solution that might meet the stated goals. Some question sets have more than one correct solution, while others might not have a correct solution.

After you answer a question in this section, you will NOT be able to return to it. As a result, these questions will not appear in the review screen.

You are developing a new application named App1 that uses the Microsoft identity platform to authenticate to Azure Active Directory (Azure AD).

Currently, App1 can read user profile information. You need to allow App1 to read the user's calendar.

Solution: Add `https://graph.windows.net/user.read` to the list of scopes during the initial login request. Does this meet the goal?

- A. Yes
- B. No

Answer: B

Explanation:

Microsoft Graph Calendars.Read allows the app to read events in user calendars.

For your app to access data in Microsoft Graph, the user or administrator must grant it the correct permissions via a consent process.

Application permissions are used by apps that run without a signed-in user present; for example, apps that run as background services or daemons. Application permissions can only be consented by an administrator.

References: <https://docs.microsoft.com/en-us/azure/active-directory/develop/v2-permissions-and-consent> <https://docs.microsoft.com/en-us/graph/permissions-reference>

NEW QUESTION 47

.....

THANKS FOR TRYING THE DEMO OF OUR PRODUCT

Visit Our Site to Purchase the Full Set of Actual MS-600 Exam Questions With Answers.

We Also Provide Practice Exam Software That Simulates Real Exam Environment And Has Many Self-Assessment Features. Order the MS-600 Product From:

<https://www.2passeasy.com/dumps/MS-600/>

Money Back Guarantee

MS-600 Practice Exam Features:

- * MS-600 Questions and Answers Updated Frequently
- * MS-600 Practice Questions Verified by Expert Senior Certified Staff
- * MS-600 Most Realistic Questions that Guarantee you a Pass on Your FirstTry
- * MS-600 Practice Test Questions in Multiple Choice Formats and Updatesfor 1 Year