



Cisco

Exam Questions 200-901

Developing Applications and Automating Workflows using Cisco Core Platforms (DEVASC)

NEW QUESTION 1

Refer to the exhibit.

URL: https://<ASA_IP>/api/access/global/rules

Method: POST

Payload:

```

{
  "destinationAddress": {
    "kind": "IPv4Address",
    "value": "10.1.1.1"
  },
  "remarks": [ ],
  "active": true
  "permit": true,
  "sourceAddress": {
    "kind": "IPv4Address",
    "value": "192.168.1.1"
  }
}

```

Response Status Code: 400 Bad Request

```

{"messages":[{"level":"Error","code":"JSON-PARSE-ERROR","details":"
Unexpected character ('\'' (code 34))":

```

Which JSON is equivalent to the XML –encoded data?

List Messages

Lists all messages in a room. Each message will include content attachments if present.

The list sorts the messages in descending order by creation date.

Long result sets will be split into [pages](#).

GET /v1/messages

Query Parameters

roomId
string **Required**
List messages in a room, by ID.

mentionedPeople
array
List messages with these people mentioned, by ID.
Use me as a shorthand for the current API user.

before
string
List messages sent before a date and time.

beforeMessage
string
List messages sent before a message, by ID.

max
number
Limit the maximum number of messages in the response.
Default: **50**

Try it **Example**

GET /v1/messages(?roomId,mentionedPeople,before,beforeMessage)

Header

Authorization ☒ Use personal access token

Bearer

This limited-duration personal access token is hidden for your security.

Query Parameters

roomId
Required e.g. Y2lzY29zcGFyazovL3VzL1JPT00vYmJj

mentionedPeople e.g. Y2lzY29zcGFyazovL3VzL1BFT1BMRS6

before e.g. 2016-04-2Tfj:9:01:55:966Z

beforeMessage e.g. Y2lzY29zcGFyazovL3VzL1FU1NBROL

max e.g. 100

Run

```
bash-3.2$ curl -H "Content-Type: application/json" -H "Authorization:
Fj2zzzykEa091ic9GK2j8LtE1Hk1Hk1H6oRHPQdw1Pat60i7ndtHHnWzL2b5pqMg14Kk_B9EI59isacLy7-
NarA02n9H-tGgt-SxQ39iDejgcs" -i -X POST -d "{ \"roomId\":
\"Y2geK53sjEknosrc7SwQ5ZGL99pHgiuScB7DfNvUstr8Xx4wDKLiPORcEkryAnM3QmK9LQZsP0G4\"
, \"text\": \"test2\" }" https://api.ciscospark.com/v1/messages

HTTP/1.1 401 Unauthorized
Via: 1.1 linker
TrackingID: ROUTER_5E0FDC8C-EB6F-01BB-00EF-806BF1BD00EF
Date: Sat, 04 Jan 2020 00:30:04 GMT
Server: Redacted
Content-Length: 267
Content-Type: application/json
Strict-Transport-Security: max-age=63072000; includeSubDomains; preload

{"message": "The request requires a valid access token set in the Authorization request
header.", "errors": [{"description": "The request requires a valid access token set in the
Authorization request
header."}], "trackingId": "ROUTER_5E0FDC8C-EB6F-01BB-00EF-806BF1BD00EF"}

bash-3.2$
```

- A. Option A
- B. Option B
- C. Option C
- D. Option D

Answer: A

NEW QUESTION 2

Refer to the exhibit.

```
curl -X GET [redacted] -H "Accept [redacted]: application/json" \
-H "Authorization: Bearer AbCdEf123456" https://localhost/api/myresource
```

A process on the host wants to access the service running inside this Docker container. Which port is used to make a connection?

- A. only outbound connections between 3000 and 5000 are possible
- B. port 3000
- C. any port between 3000 and 5000
- D. port 5000

Answer: B

NEW QUESTION 3

Refer to the exhibit.

```
curl -X [redacted] -H "[redacted]: application/json" \
-H "[redacted]: Bearer AbCdEf123456" https://localhost/api/myresource
```

Which two statement describe the configuration of the Ansible script is run? (Choose two.)

- A. Traffic on port 0/2 and 0/3 is connected to port 0/6.
- B. Traffic from ports 0/2 to 0/5 can flow on port 0/1 due to the trunk.
- C. Traffic can flow between ports 0/2 to 0/5 due to the trunk on port 0/1.
- D. GigabitEthernet0/2 and GigabitEthernet0/3 are access ports for VLAN 6.
- E. GiabitEthernet0/1 is left unconfigured.

Answer: BD

NEW QUESTION 4

What is the outcome of executing this command?

```
git clone ssh://john@exmaple.com/path/to/my-project_git
```

- A. Creates a local copy of a repository called "my project"
- B. Creates a copy of a branch called "my project"
- C. Initiates a new Git repository called "my project"
- D. Creates a new branch called "my project"

Answer: A

NEW QUESTION 5

Refer to the exhibit.

FROM ubuntu:12.04	informs Docker that the container listens on the specified network port(s) at runtime
VOLUME ["/var/www", "/var/log/apache2", "/etc/apache2"]	creates a mount point with the specified name
RUN apt-get update && apt-get install -y --force-yes apache2	configures a container that runs as an executable
ENTRYPOINT ["/usr/sbin/apache2ctl", "-D", "FOREGROUND"]	must be the first instruction in the Docker file
EXPOSE 1521	

Fill in the blank to complete the query parameter and value so that the result set is returned in reverse chronological order (most recent first) based on when message were entered.

FROM ubuntu:12.04	EXPOSE 1521
VOLUME ["/var/www", "/var/log/apache2", "/etc/apache2"]	VOLUME ["/var/www", "/var/log/apache2", "/etc/apach
RUN apt-get update && apt get install -y --force-yes apache	ENTRYPOINT ["/usr/sbin/apache2ctl", "-D", "FOREGROU
ENTRYPOINT ["/usr/sbin/apache2ctl", "-D", "FOREGROUND"]	FROM ubuntu:12.04
EXPOSE 1521	

- A. Mastered
- B. Not Mastered

Answer: A

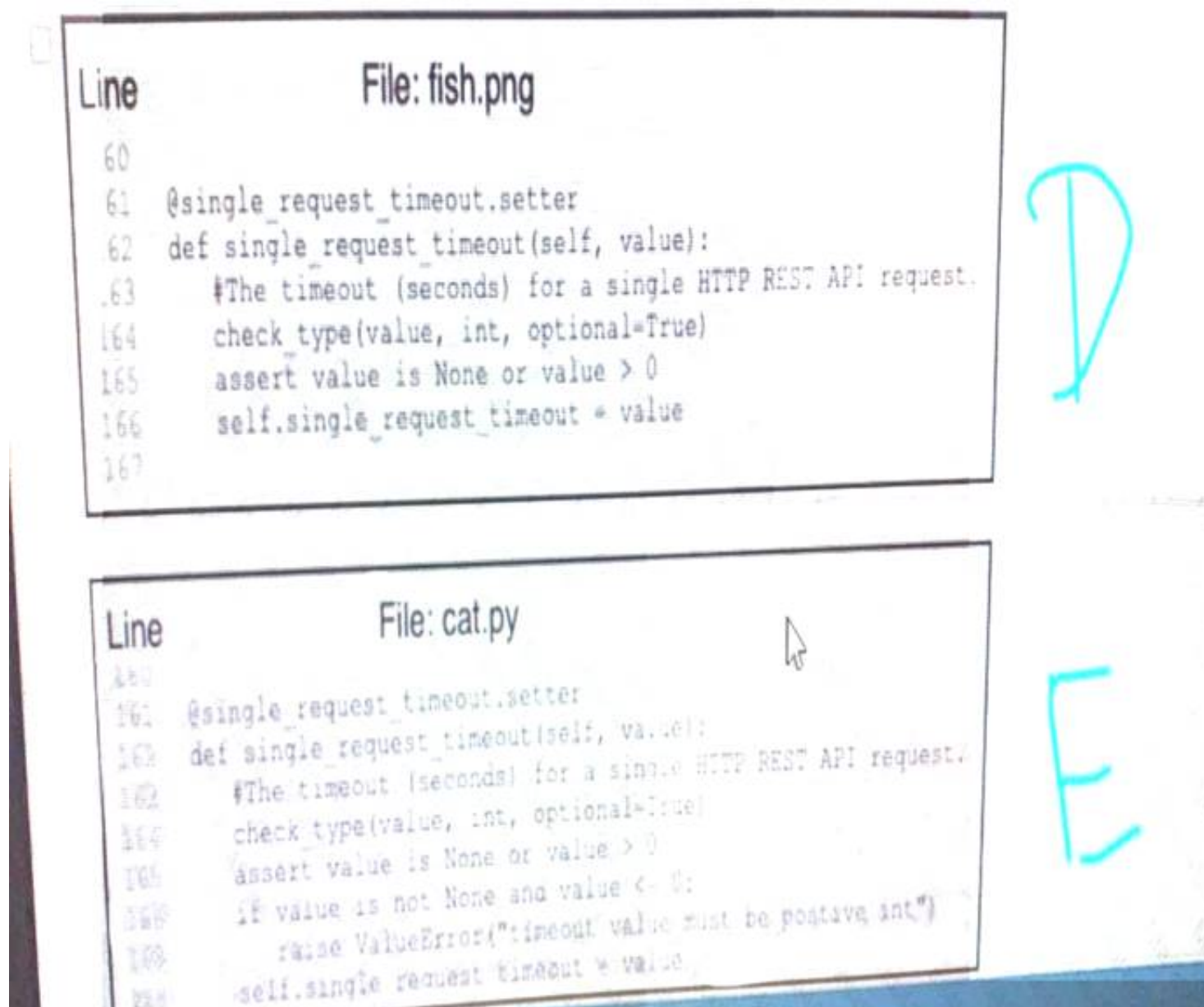
Explanation:

?sortBy=lastactivity

```
<books>
  <science>
    <biology>10.00</biology>
    <geology>9.00</geology>
    <chemistry>8.00</chemistry>
  </science>
  <math>
    <calculus>20.00</calculus>
    <algebra>12.00</algebra>
  </math>
</books>
```

NEW QUESTION 6

Refer to the exhibit.



What is the effect of this Ansible playbook on an IOS router?

- A. A new running configuration is pushed to the IOS router.
- B. The current running configuration of the IOS router is backed up.
- C. The start-up configuration of the IOS router is copied to a local folder.
- D. A new start-up configuration is copied to the IOS router.

Answer: B

NEW QUESTION 7

Which CI/CD tool is an automation tool used to build, test, and deploy software?

- A. Nagios
- B. Gradle
- C. Jenkins
- D. Git

Answer: C

NEW QUESTION 8

Which type of HTTP method is used by the Meraki and webex teams APIs to send webhook notifications?

- A. HTTP GET
- B. HTTP PUT
- C. HTTP HEAD
- D. HTTP POST

Answer: D

NEW QUESTION 9

A function `my_func()` returns True when it executes normally. Which python snippet tests `my_func()`?

For CLI commands that support XML, the `clid()` method returns JSON output. An exception is thrown when XML is not used. Executes CLI commands. Takes CLI command string and returns show command output in a JSON form.

“

Note: The “clid” API can be useful when searching the output of show commands using JSON tools as shown in the example.

PYTHON

```
Example:
>>> import json
>>> from cli import *
>>> jversion = json.loads(clid("show
version"))
>>> jversion[bios_ver_str']
'08.06'
```

Arguments:

- cmd: Single CLI command or a batch of CLI commands. Delimiter for multiple CLI commands is a space followed by a semicolon. Configuration commands must be in a fully qualified form.

Returns:

- string: JSON-formatted output of show commands.

- A. Option A
- B. Option B
- C. Option C
- D. Option D

Answer: B

NEW QUESTION 10

Which status code is used by a REST API to indicate that the submitted payload is incorrect?

- A. A.-400B.403C.405D.429

Answer: A

NEW QUESTION 10

Refer to the exhibit.

```
leaf IPPeer {
    type union {
        type inet:ipv4-address;
        type inet:ipv6-address;
    }
}
```

Drag and drop the descriptors from the left onto the correct parts of the API request and response on the right.

```
{
  "IPPeer": "10.1.1.1"
}

{
  "IPPeer": "10.1.1.1 2001:db::1"
}

{
  "IPPeer": [
    "10.1.1.1",
    "2001:db::1"
  ]
}

{
  "IPPeer": [
    "10.1.1.1"
  ]
}
```

- A. Mastered
- B. Not Mastered

Answer: A

Explanation:

A – E, B – D, C – B, D – C, E – A, F – F

NEW QUESTION 11

What is an example of a network interface hardware address?

- A. domain name
- B. IP address
- C. workstation name
- D. MAC address

Answer: D

NEW QUESTION 12

Drag and drop the requests from the left into the correct order on the right to create and check the path trace between two devices using Cisco DNA center API.

HTTP GET /v1/rooms ?sortBy=lastactivity

- A. Mastered
- B. Not Mastered

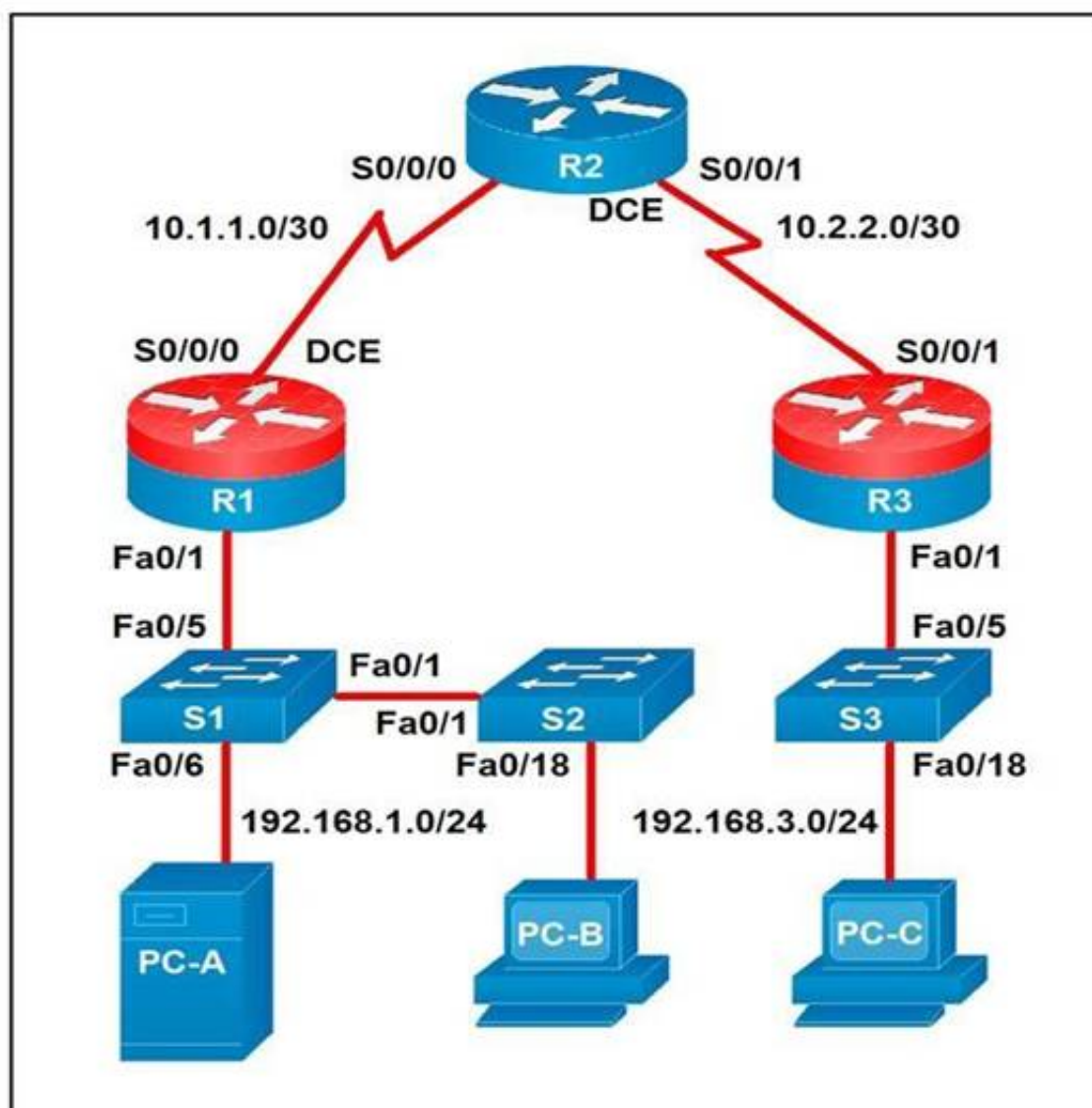
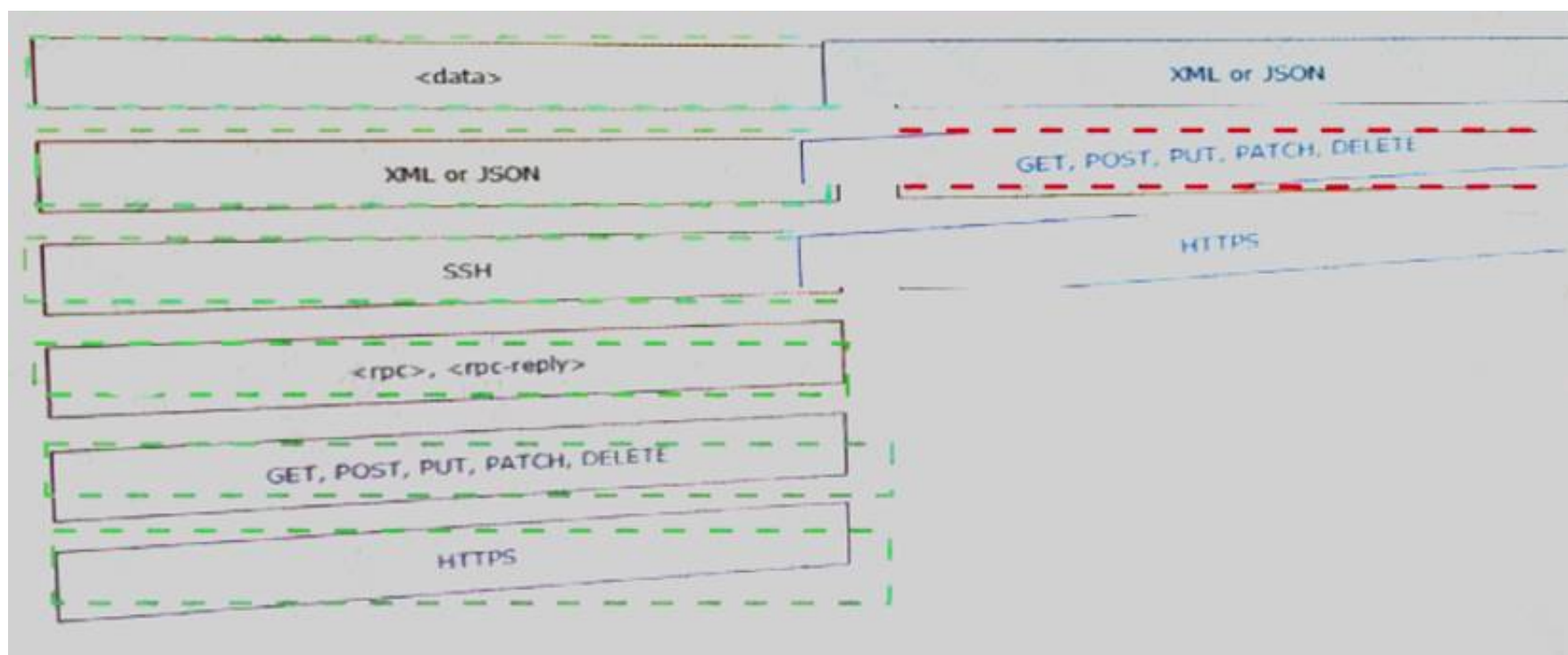
Answer: A

Explanation:

1 – C, 2 – D, 3 – B, 4 - A

NEW QUESTION 13

Refer to the exhibit.



A developer is troubleshooting an API with the given API with the given API documentation and cURL command. What is the cause of this problem?

- A. The user is not allowed to post messages from their account
- B. The request body is missing or incomplete
- C. The API token specified is expired
- D. The authorization header is missing or incomplete

Answer: C

NEW QUESTION 16

Drag and drop elements of the RESTCONF protocol stack from the left onto the correct description on the right. Not all elements on the left are used.

List the networks in a Meraki organization:

```
GET https://api.meraki.com/api/v0/organizations/<org_id>/networks
Response code: 200
Response body: [ {
  "id": <network_id>,
  "name": "Test Network",
  "organization_id": <new_org_id>,
  "type": "wireless",
  "timeZone": "America/Los_Angeles",
  "tags": " test "
```


- A. Mastered
- B. Not Mastered

Answer: A

Explanation:

1 – B, 2 – E, 3 - F

NEW QUESTION 21

An application calls a REST API and expects a result set of more than 550 records, but each time the call is made, only 25 are returned. Which feature limits the amount of data that is returned by the API?

- A. pagination
- B. payload limit
- C. rate limiting
- D. service timeouts

Answer: A

NEW QUESTION 24

Refer to the exhibit.

ports are different broadcast domain by default	Firewall
ports can be in the same broadcast domain	Load Balancer
uses traffic inspection to make routing decisions	Router
blocks networks traffic by default	Switch

An administrator attempts to perform a GET using the Cisco IOS XE RESTOCNF API to return the hostname of a device. The sequence diagram illustrated the HTTP message observed. Which change to the API request resolves the issue?

- A. Add Content-Type HTTP header with 'application/yang-data+json' using –H 'Content-Type: application/yang-data+json'.
- B. Use -u cisco: cisco instead of -u 'cisco: cisco'.
- C. Change the request method from -X "GET" to- X' POST".
- D. Remove the -H 'Accept: application/yang-data^/son' HTTP header because it is not required.

Answer: B

NEW QUESTION 25

What is the purpose of a MAC address?

- A. To uniquely identify a router in a LAN
- B. To uniquely identify a network interface in a LAN
- C. To uniquely identify a device on the internet
- D. To uniquely identify a switch in a LAN

Answer: B

NEW QUESTION 27

Which principle is a value from the manifesto for Agile software development?

- A. adhering to a plan over responding to requirements
- B. detailed documentation over working software
- C. processes and tools over teams and inter actions
- D. customer collaboration over contract negotiation

Answer: D

NEW QUESTION 28

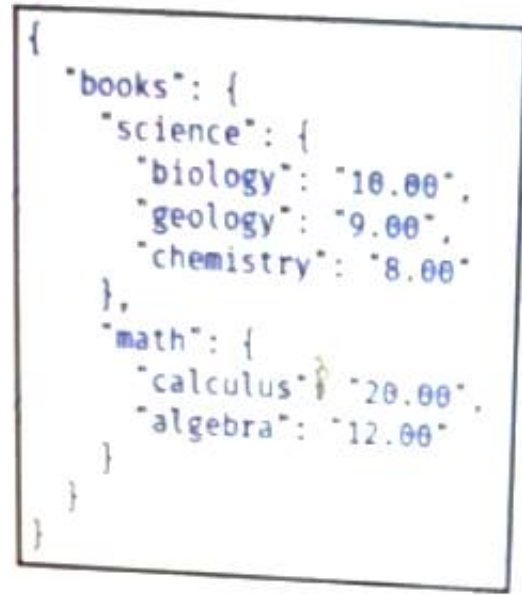
Which action does the Git command git merge allow the development to perform?

- A. Combine multiple sequence of commits into one unified history.
- B. Push changes to the remote repository
- C. Switch between branches
- D. Create, list, rename, and delete branches

Answer: A

NEW QUESTION 30

Drag and drop the descriptions from the left onto correct application deployment models on the right.



- A. Mastered
- B. Not Mastered

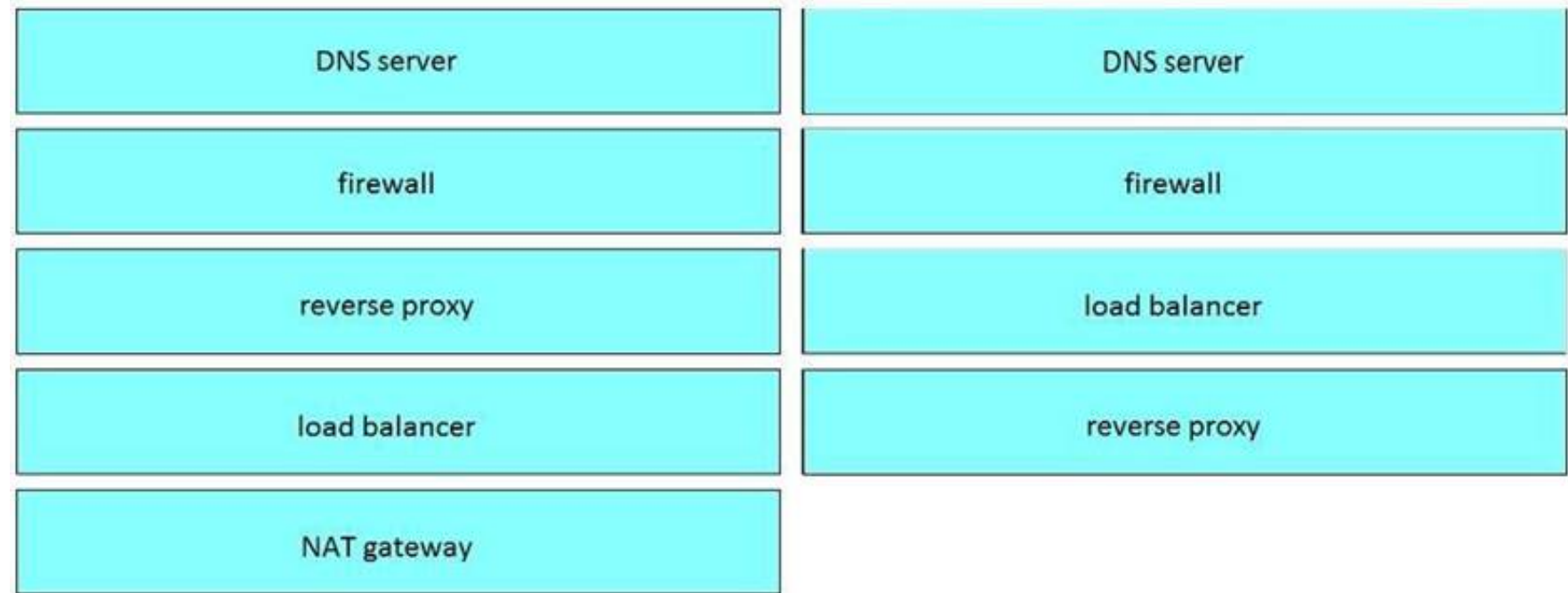
Answer: A

Explanation:

1 – B, 2 – E, 3 – C, 4 – D, 5 – A

NEW QUESTION 35

Refer to the exhibit.



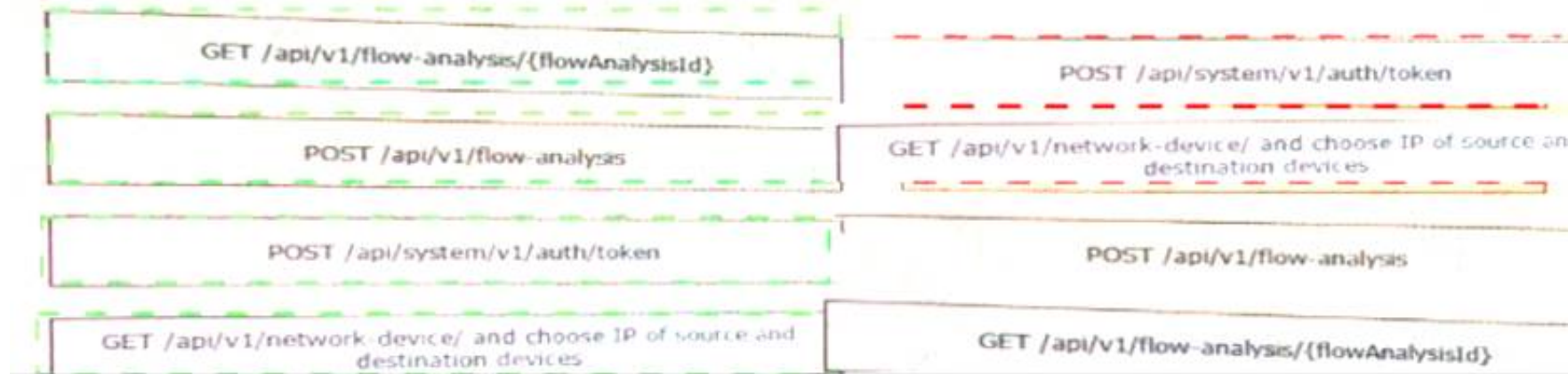
Which two statements about the network diagram are true? (Choose two.)

- A. PC-A and PC-B are in the same subnet.
- B. One of the routers has two connected serial interfaces.
- C. The subnet of PC-C can contain 256 hosts.
- D. R1 and R3 are in the same subnet.
- E. The subnet address of PC-B has 18 bits dedicated to the network portion.

Answer: BC

NEW QUESTION 37

Drag and drop the HTTP status codes from the left onto the correct descriptions on the right.



- A. Mastered
- B. Not Mastered

Answer: A

Explanation:
1 – B, 2 – D, 3 – A, 4 – C

NEW QUESTION 41
Fill in the blanks to complete the Python script to update the Webex Teams membership of a room using the Python requests library import requests

Response Headers	A
HTTP Request	B
HTTP Response	C
Request Payload	D
Request Headers	E
Response Payload	F

- A. Mastered
- B. Not Mastered

Answer: A

Explanation:
request, headers , payload

NEW QUESTION 46
Which detail is included in a routing table?

- A. IP protocol
- B. Broadcast address
- C. TCP or UDP port number
- D. Destination next hop or outgoing interface

Answer: D

NEW QUESTION 51
Which two statements about JSON and XML are true? (Choose two.)

- A. JSON objects arc collection of key value paire.
- B. The syntax of JSON contains tags, elements, and attributes.
- C. JSON arrays are an unordered set of key value pairs.
- D. The syntax of XML contains tags, elements, and attributes.
- E. XML objects are collections of key-value pairs.

Answer: AD

NEW QUESTION 52
Refer to the exhibit.

List the clients that have used this network in the timespan

HTTP REQUEST

GET /networks/ {networkId}/clients

PARAMETERS

t0

The beginning of the timespan for the data. The maximum lookback period is 31 days from today.

timespan

The timespan for which the information will be fetched. If specifying timespan, do not specify parameter t0. The value must be in seconds and be less than or equal to 31 days. The default is 1 day.

perPage

The number of entries per page returned. Acceptable range is 3 – 1000. Default is 10.

startingAfter

A token used by the server to indicate the start of the page. Often this is a timestamp or an ID but it is not limited to those. This parameter should not be defined by client applications. The link for the first, last, prev, or next page in the HTTP Link header should define it.

endingBefore

A token used by the server to indicate the end of the page. Often this is a timestamp or an ID but it is not limited to those. This parameter should not be defined by client applications. The link for the first, last, prev, or next page in the HTTP Link header should define it.

The output of a unified diff when comparing two versions of a python script is shown. Which two “single_request _ timeout ()”

```
base_url = https://api.meraki.com/api/v0"
network_id = "L_12345678910"
api_key = "1098hadpfsiapsf8ahf8ohp"
requests.<item 1> (
    <item 2> + "/"<item 3>/" + /<item 4>, "/"<item 5>",
    headers = {
        "X-Cisco-Meraki-API-Key": "<item 6>",
        "Content-Type": "<item 7>"
    },
    <item 8>={"<item 9>":"/<item 10>})
```

- A. Option A
- B. Option B
- C. Option C
- D. Option D

Answer: BC

NEW QUESTION 57

.....

About ExamBible

[Your Partner of IT Exam](#)

Found in 1998

ExamBible is a company specialized on providing high quality IT exam practice study materials, especially Cisco CCNA, CCDA, CCNP, CCIE, Checkpoint CCSE, CompTIA A+, Network+ certification practice exams and so on. We guarantee that the candidates will not only pass any IT exam at the first attempt but also get profound understanding about the certificates they have got. There are so many alike companies in this industry, however, ExamBible has its unique advantages that other companies could not achieve.

Our Advances

* 99.9% Uptime

All examinations will be up to date.

* 24/7 Quality Support

We will provide service round the clock.

* 100% Pass Rate

Our guarantee that you will pass the exam.

* Unique Gurantee

If you do not pass the exam at the first time, we will not only arrange FULL REFUND for you, but also provide you another exam of your claim, ABSOLUTELY FREE!

NEW QUESTION 1

Refer to the exhibit.

URL: https://<ASA_IP>/api/access/global/rules

Method: POST

Payload:

```
{
  "destinationAddress": {
    "kind": "IPv4Address",
    "value": "10.1.1.1"
  },
  "remarks": [ ],
  "active": true
  "permit": true,
  "sourceAddress": {
    "kind": "IPv4Address",
    "value": "192.168.1.1"
  }
}
```

Response Status Code: 400 Bad Request

```
{
  "messages": [
    {
      "level": "Error",
      "code": "JSON-PARSE-ERROR",
      "details": "Unexpected character ('\"' (code 34)):"
    }
  ]
}
```

Which JSON is equivalent to the XML –encoded data?

List Messages

Lists all messages in a room. Each message will include content attachments if present.

The list sorts the messages in descending order by creation date.

Long result sets will be split into [pages](#).

GET /v1/messages

Query Parameters

roomId
string **Required**
List messages in a room, by ID.

mentionedPeople
array
List messages with these people mentioned, by ID.
Use me as a shorthand for the current API user.

before
string
List messages sent before a date and time.

beforeMessage
string
List messages sent before a message, by ID.

max
number
Limit the maximum number of messages in the response.
Default: **50**

Try it **Example**

GET /v1/messages(?roomId,mentionedPeople,before,beforeMessage)

Header

Authorization ☒ Use personal access token

Bearer

This limited-duration personal access token is hidden for your security.

Query Parameters

roomId
Required
e.g. Y2lzY29zcGFyazovL3VzL1JPT00vYmJj

mentionedPeople
e.g. Y2lzY29zcGFyazovL3VzL1BFT1BMRS6

before
e.g. 2016-04-2Tfj:9:01:55:966Z

beforeMessage
e.g. Y2lzY29zcGFyazovL3VzL1FU1NBROL

max
e.g. 100

Run


```
bash-3.2$ curl -H "Content-Type: application/json" -H "Authorization:
Fj2zzzykEa091ic9GK2j8LtE1Hk1Hk1H6oRHPQdw1Pat60i7ndtHHnWzL2b5pqMg14Kk_B9EI59isacLy7-
NarA02n9H-tGgt-SxQ39iDejgcs" -i -X POST -d "{ \"roomId\":
\"Y2geK53sjEknosrc7SwQ5ZGL99pHgiuScB7DfNvUstr8Xx4wDKLiPORcEkryAnM3QmK9LQZsP0G4\"
, \"text\": \"test2\" }" https://api.ciscospark.com/v1/messages

HTTP/1.1 401 Unauthorized
Via: 1.1 linkerD
TrackingID: ROUTER_5E0FDC8C-EB6F-01BB-00EF-806BF1BD00EF
Date: Sat, 04 Jan 2020 00:30:04 GMT
Server: Redacted
Content-Length: 267
Content-Type: application/json
Strict-Transport-Security: max-age=63072000; includeSubDomains; preload

{"message": "The request requires a valid access token set in the Authorization request
header.", "errors": [{"description": "The request requires a valid access token set in the
Authorization request
header."}], "trackingId": "ROUTER_5E0FDC8C-EB6F-01BB-00EF-806BF1BD00EF"}

bash-3.2$
```

- A. Option A
- B. Option B
- C. Option C
- D. Option D

Answer: A

NEW QUESTION 2

Refer to the exhibit.

```
curl -X GET [redacted] -H "Accept: application/json" \
-H "Authorization: Bearer AbCdEf123456" https://localhost/api/myresource
```

A process on the host wants to access the service running inside this Docker container. Which port is used to make a connection?

- A. only outbound connections between 3000 and 5000 are possible
- B. port 3000
- C. any port between 3000 and 5000
- D. port 5000

Answer: B

NEW QUESTION 3

Refer to the exhibit.

```
curl -X [redacted] -H "[redacted]: application/json" \
-H "[redacted]: Bearer AbCdEf123456" https://localhost/api/myresource
```

Which two statement describe the configuration of the Ansible script is run? (Choose two.)

- A. Traffic on port 0/2 and 0/3 is connected to port 0/6.
- B. Traffic from ports 0/2 to 0/5 can flow on port 0/1 due to the trunk.
- C. Traffic can flow between ports 0/2 to 0/5 due to the trunk on port 0/1.
- D. GigabitEthernet0/2 and GigabitEthernet0/3 are access ports for VLAN 6.
- E. GiabitEthernet0/1 is left unconfigured.

Answer: BD

NEW QUESTION 4

What is the outcome of executing this command?

```
git clone ssh://john@exmaple.com/path/to/my-project_git
```

- A. Creates a local copy of a repository called "my project"
- B. Creates a copy of a branch called "my project"
- C. Initiates a new Git repository called "my project"
- D. Creates a new branch called "my project"

Answer: A

NEW QUESTION 5

Refer to the exhibit.

FROM ubuntu:12.04	informs Docker that the container listens on the specified network port(s) at runtime
VOLUME ["/var/www", "/var/log/apache2", "/etc/apache2"]	creates a mount point with the specified name
RUN apt-get update && apt-get install -y --force-yes apache2	configures a container that runs as an executable
ENTRYPOINT ["/usr/sbin/apache2ctl", "-D", "FOREGROUND"]	must be the first instruction in the Docker file
EXPOSE 1521	

Fill in the blank to complete the query parameter and value so that the result set is returned in reverse chronological order (most recent first) based on when message were entered.

FROM ubuntu:12.04	EXPOSE 1521
VOLUME ["/var/www", "/var/log/apache2", "/etc/apache2"]	VOLUME ["/var/www", "/var/log/apache2", "/etc/apach
RUN apt-get update && apt get install -y --force-yes apache	ENTRYPOINT ["/usr/sbin/apache2ctl", "-D", "FOREGROU
ENTRYPOINT ["/usr/sbin/apache2ctl", "-D", "FOREGROUND"]	FROM ubuntu:12.04
EXPOSE 1521	

- A. Mastered
- B. Not Mastered

Answer: A

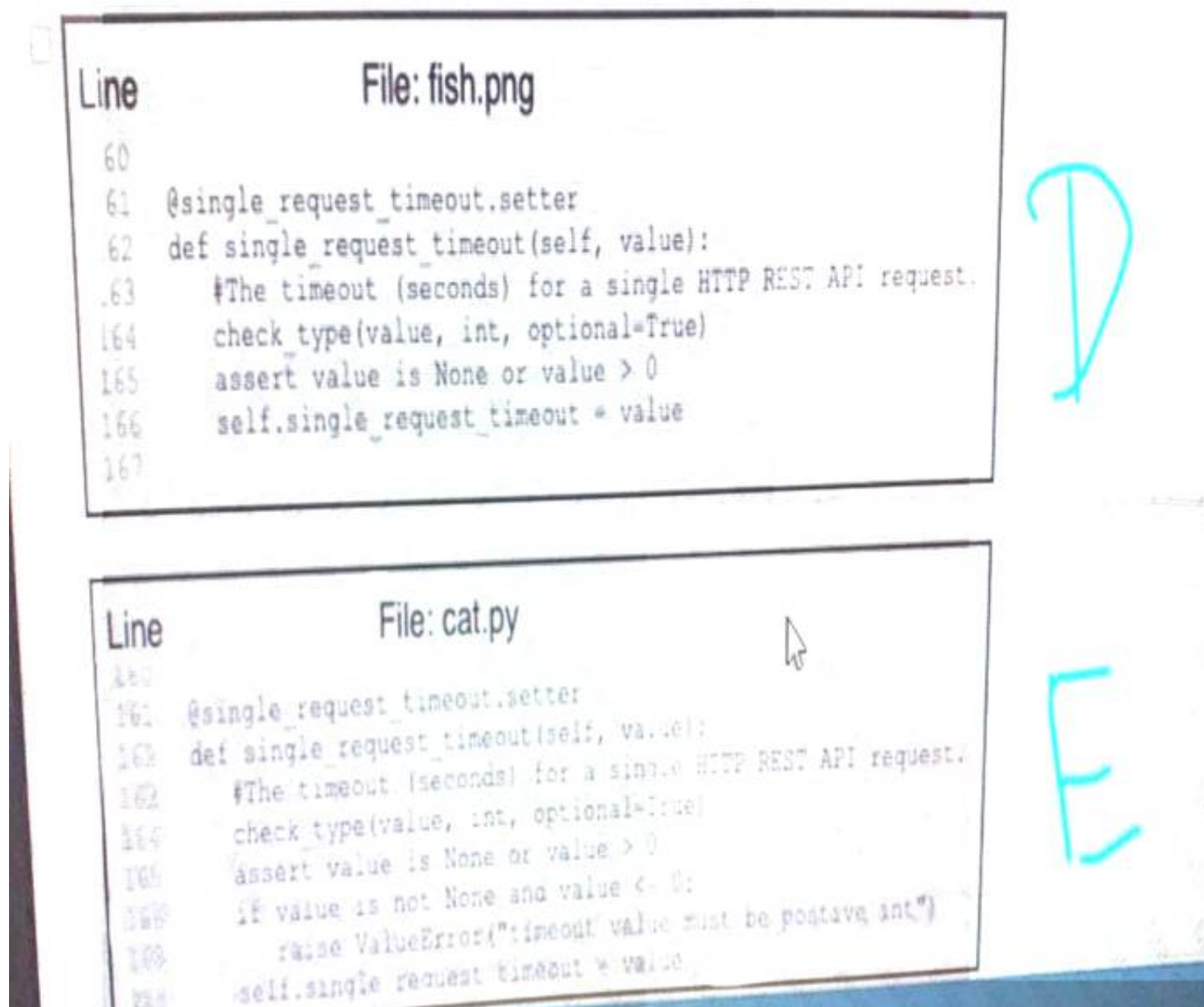
Explanation:

?sortBy=lastactivity

```
<books>
  <science>
    <biology>10.00</biology>
    <geology>9.00</geology>
    <chemistry>8.00</chemistry>
  </science>
  <math>
    <calculus>20.00</calculus>
    <algebra>12.00</algebra>
  </math>
</books>
```

NEW QUESTION 6

Refer to the exhibit.



What is the effect of this Ansible playbook on an IOS router?

- A. A new running configuration is pushed to the IOS router.
- B. The current running configuration of the IOS router is backed up.
- C. The start-up configuration of the IOS router is copied to a local folder.
- D. A new start-up configuration is copied to the IOS router.

Answer: B

NEW QUESTION 7

Which CI/CD tool is an automation tool used to build, test, and deploy software?

- A. Nagios
- B. Gradle
- C. Jenkins
- D. Git

Answer: C

NEW QUESTION 8

Which type of HTTP method is used by the Meraki and webex teams APIs to send webhook notifications?

- A. HTTP GET
- B. HTTP PUT
- C. HTTP HEAD
- D. HTTP POST

Answer: D

NEW QUESTION 9

A function `my_func()` returns True when it executes normally. Which python snippet tests `my_func()`?

For CLI commands that support XML, the `clid()` method returns JSON output. An exception is thrown when XML is not used. Executes CLI commands. Takes CLI command string and returns show command output in a JSON form.

“

Note: The “clid” API can be useful when searching the output of show commands using JSON tools as shown in the example.

PYTHON

```
Example:
>>> import json
>>> from cli import *
>>> jversion = json.loads(clid("show
version"))
>>> jversion[bios_ver_str]
'08.06'
```

Arguments:

- cmd: Single CLI command or a batch of CLI commands. Delimiter for multiple CLI commands is a space followed by a semicolon. Configuration commands must be in a fully qualified form.

Returns:

- string: JSON-formatted output of show commands.

- A. Option A
- B. Option B
- C. Option C
- D. Option D

Answer: B

NEW QUESTION 10

Which status code is used by a REST API to indicate that the submitted payload is incorrect?

- A. A.-400B.403C.405D.429

Answer: A

NEW QUESTION 10

Refer to the exhibit.

```
leaf IPPeer {
  type union {
    type inet:ipv4-address;
    type inet:ipv6-address;
  }
}
```

Drag and drop the descriptors from the left onto the correct parts of the API request and response on the right.

```
{
  "IPPeer": "10.1.1.1"
}

{
  "IPPeer": "10.1.1.1 2001:db::1"
}

{
  "IPPeer": [
    "10.1.1.1",
    "2001:db::1"
  ]
}

{
  "IPPeer": [
    "10.1.1.1"
  ]
}
```

- A. Mastered
- B. Not Mastered

Answer: A

Explanation:

A – E, B – D, C – B, D – C, E – A, F – F

NEW QUESTION 11

What is an example of a network interface hardware address?

- A. domain name
- B. IP address
- C. workstation name
- D. MAC address

Answer: D

NEW QUESTION 12

Drag and drop the requests from the left into the correct order on the right to create and check the path trace between two devices using Cisco DNA center API.

HTTP GET /v1/rooms ?sortBy=lastactivity

- A. Mastered
- B. Not Mastered

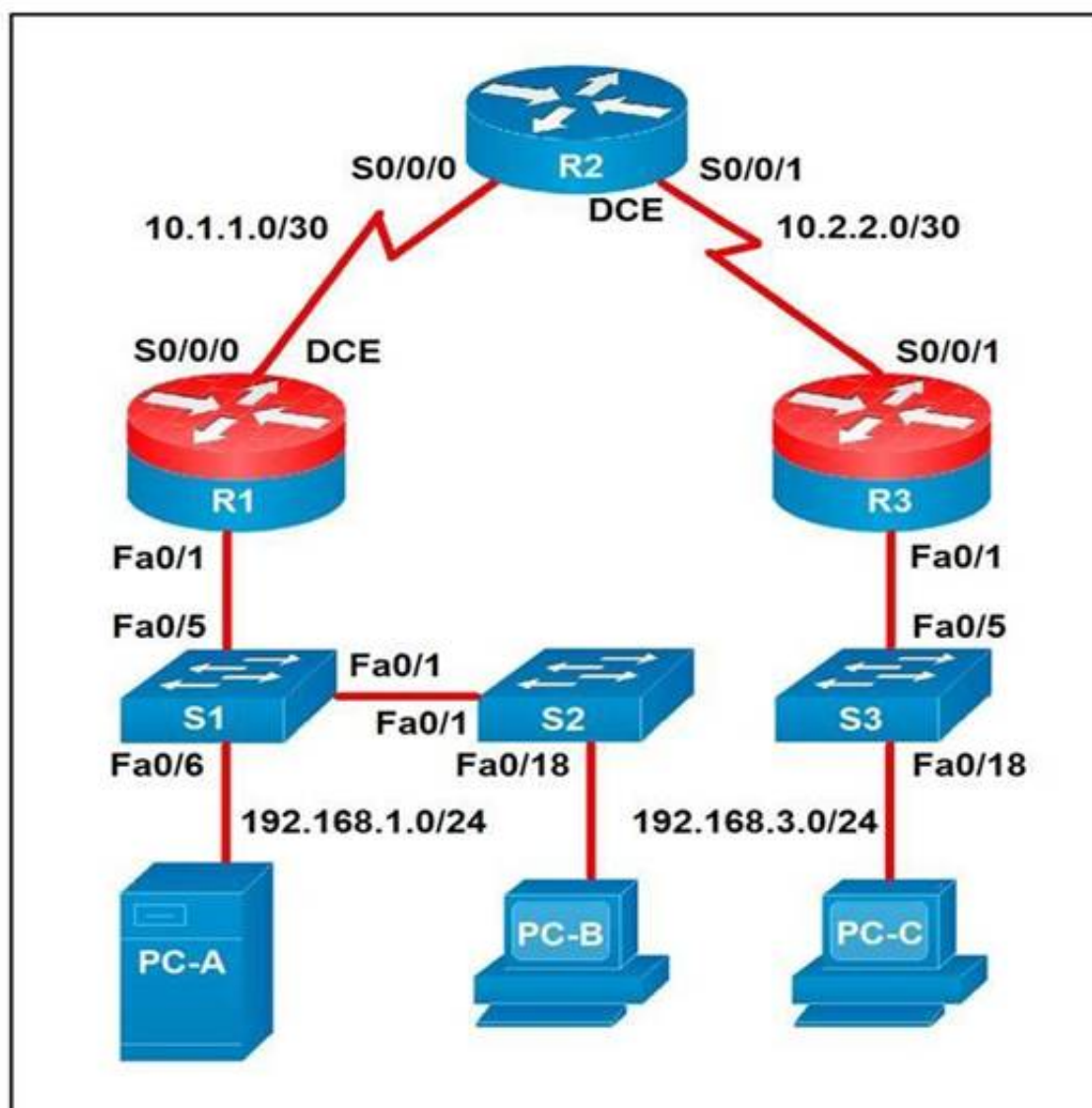
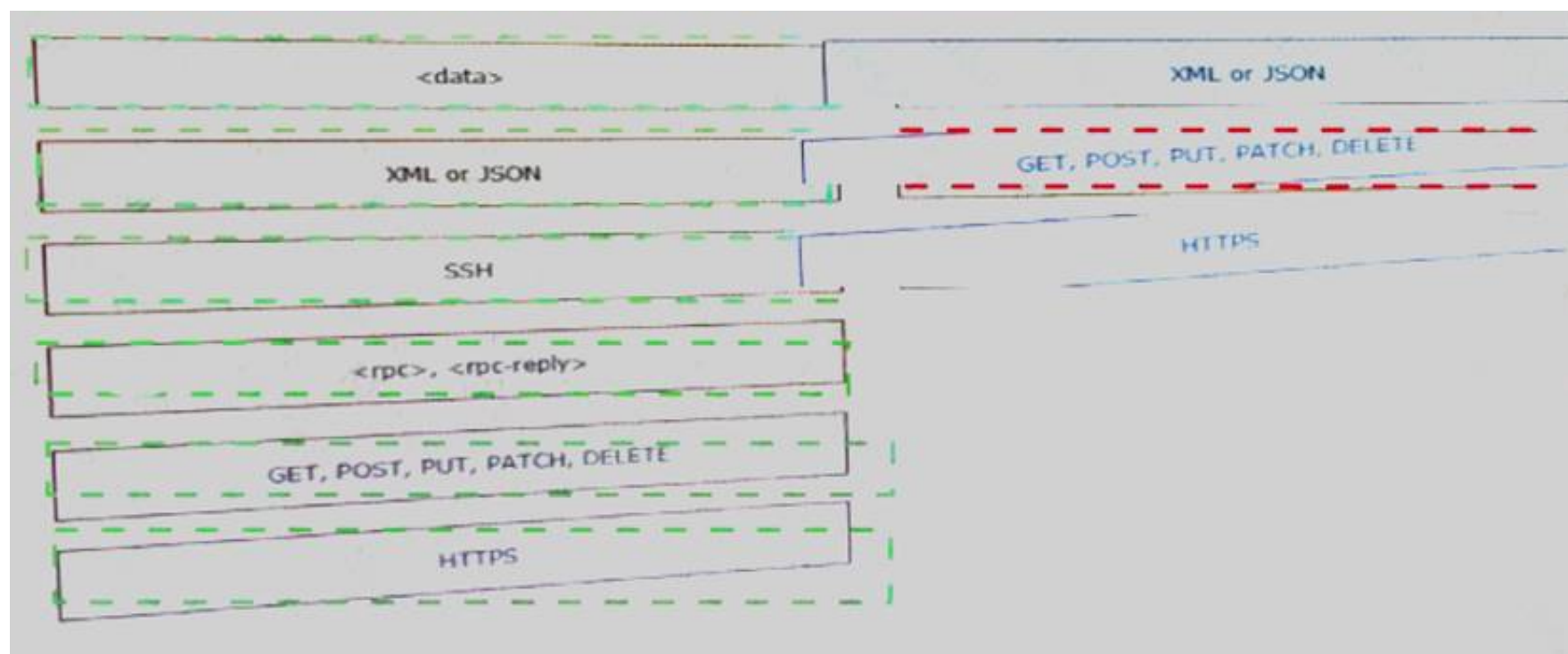
Answer: A

Explanation:

1 – C, 2 – D, 3 – B, 4 - A

NEW QUESTION 13

Refer to the exhibit.



A developer is troubleshooting an API with the given API with the given API documentation and cURL command. What is the cause of this problem?

- A. The user is not allowed to post messages from their account
- B. The request body is missing or incomplete
- C. The API token specified is expired
- D. The authorization header is missing or incomplete

Answer: C

NEW QUESTION 16

Drag and drop elements of the RESTCONF protocol stack from the left onto the correct description on the right. Not all elements on the left are used.

```
List the networks in a Meraki organization:

GET https://api.meraki.com/api/v0/organizations/<org_id>/networks
Response code: 200
Response body: [ {
  "id": <network_id>,
  "name": "Test Network",
  "organization_id": <new_org_id>,
  "type": "wireless",
  "timeZone": "America/Los_Angeles",
  "tags": " test "
}
```


- A. Mastered
- B. Not Mastered

Answer: A

Explanation:

1 – B, 2 – E, 3 - F

NEW QUESTION 21

An application calls a REST API and expects a result set of more than 550 records, but each time the call is made, only 25 are returned. Which feature limits the amount of data that is returned by the API?

- A. pagination
- B. payload limit
- C. rate limiting
- D. service timeouts

Answer: A

NEW QUESTION 24

Refer to the exhibit.

ports are different broadcast domain by default	Firewall
ports can be in the same broadcast domain	Load Balancer
uses traffic inspection to make routing decisions	Router
blocks networks traffic by default	Switch

An administrator attempts to perform a GET using the Cisco IOS XE RESTOCNF API to return the hostname of a device. The sequence diagram illustrated the HTTP message observed. Which change to the API request resolves the issue?

- A. Add Content-Type HTTP header with 'application/yang-data+json' using –H 'Content-Type: application/yang-data+json'.
- B. Use -u cisco: cisco instead of -u 'cisco: cisco'.
- C. Change the request method from -X "GET" to- X' POST".
- D. Remove the -H 'Accept: application/yang-data^/son' HTTP header because it is not required.

Answer: B

NEW QUESTION 25

What is the purpose of a MAC address?

- A. To uniquely identify a router in a LAN
- B. To uniquely identify a network interface in a LAN
- C. To uniquely identify a device on the internet
- D. To uniquely identify a switch in a LAN

Answer: B

NEW QUESTION 27

Which principle is a value from the manifesto for Agile software development?

- A. adhering to a plan over responding to requirements
- B. detailed documentation over working software
- C. processes and tools over teams and inter actions
- D. customer collaboration over contract negotiation

Answer: D

NEW QUESTION 28

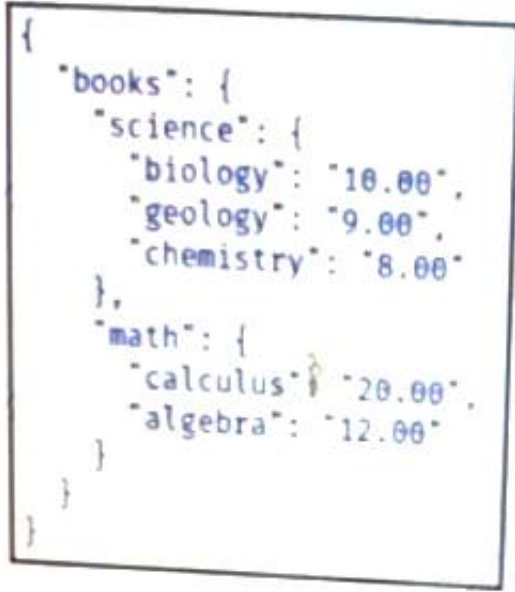
Which action does the Git command git merge allow the development to perform?

- A. Combine multiple sequence of commits into one unified history.
- B. Push changes to the remote repository
- C. Switch between branches
- D. Create, list, rename, and delete branches

Answer: A

NEW QUESTION 30

Drag and drop the descriptions from the left onto correct application deployment models on the right.



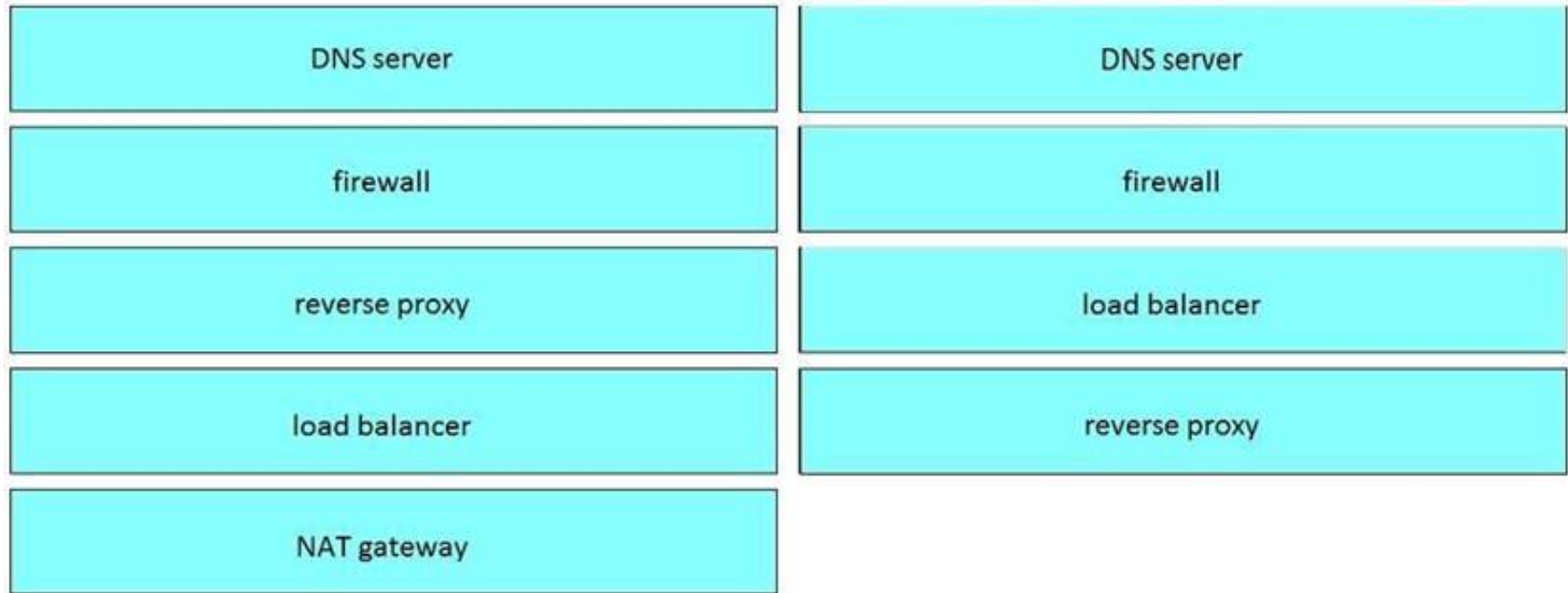
- A. Mastered
- B. Not Mastered

Answer: A

Explanation:
1 – B, 2 – E, 3 – C, 4 – D, 5 – A

NEW QUESTION 35

Refer to the exhibit.



Which two statements about the network diagram are true? (Choose two.)

- A. PC-A and PC-B are in the same subnet.
- B. One of the routers has two connected serial interfaces.
- C. The subnet of PC-C can contain 256 hosts.
- D. R1 and R3 are in the same subnet.
- E. The subnet address of PC-B has 18 bits dedicated to the network portion.

Answer: BC

NEW QUESTION 37

Drag and drop the HTTP status codes from the left onto the correct descriptions on the right.



- A. Mastered
- B. Not Mastered

Answer: A

Explanation:
1 – B, 2 – D, 3 – A, 4 – C

NEW QUESTION 41
Fill in the blanks to complete the Python script to update the Webex Teams membership of a room using the Python requests library import requests

Response Headers	A
HTTP Request	B
HTTP Response	C
Request Payload	D
Request Headers	E
Response Payload	F

- A. Mastered
- B. Not Mastered

Answer: A

Explanation:
request, headers , payload

NEW QUESTION 46
Which detail is included in a routing table?

- A. IP protocol
- B. Broadcast address
- C. TCP or UDP port number
- D. Destination next hop or outgoing interface

Answer: D

NEW QUESTION 51
Which two statements about JSON and XML are true? (Choose two.)

- A. JSON objects arc collection of key value paire.
- B. The syntax of JSON contains tags, elements, and attributes.
- C. JSON arrays are an unordered set of key value pairs.
- D. The syntax of XML contains tags, elements, and attributes.
- E. XML objects are collections of key-value pairs.

Answer: AD

NEW QUESTION 52
Refer to the exhibit.

List the clients that have used this network in the timespan

HTTP REQUEST

GET /networks/ {networkId}/clients

PARAMETERS

t0

The beginning of the timespan for the data. The maximum lookback period is 31 days from today.

timespan

The timespan for which the information will be fetched. If specifying timespan, do not specify parameter t0. The value must be in seconds and be less than or equal to 31 days. The default is 1 day.

perPage

The number of entries per page returned. Acceptable range is 3 – 1000. Default is 10.

startingAfter

A token used by the server to indicate the start of the page. Often this is a timestamp or an ID but it is not limited to those. This parameter should not be defined by client applications. The link for the first, last, prev, or next page in the HTTP Link header should define it.

endingBefore

A token used by the server to indicate the end of the page. Often this is a timestamp or an ID but it is not limited to those. This parameter should not be defined by client applications. The link for the first, last, prev, or next page in the HTTP Link header should define it.

The output of a unified diff when comparing two versions of a python script is shown. Which two “single_request _ timeout ()”

```
base_url = https://api.meraki.com/api/v0"
network_id = "L_12345678910"
api_key = "1098hadpfsiapsf8ahf8ohp"
requests.<item 1> (
    <item 2> + "/"<item 3>/" + /<item 4>, "/"<item 5>",
    headers = {
        "X-Cisco-Meraki-API-Key": "<item 6>",
        "Content-Type": "<item 7>"
    },
    <item 8>={"<item 9>":"/<item 10>})
```

- A. Option A
- B. Option B
- C. Option C
- D. Option D

Answer: BC

NEW QUESTION 57

.....

Relate Links

100% Pass Your 200-901 Exam with ExamBible Prep Materials

<https://www.exambible.com/200-901-exam/>

Contact us

We are proud of our high-quality customer service, which serves you around the clock 24/7.

Viste - <https://www.exambible.com/>