



**Microsoft**

## **Exam Questions 70-740**

Installation, Storage, and Compute with Windows Server 2016

### NEW QUESTION 1

You have a server that runs Windows Server 2016 Standard.

You create a new three-way mirror storage space. You format the storage space by using ReFS.

Which two features can you use on the new storage space? Each correct answer presents a complete solution.

- A. file and folder permissions
- B. disk quotas
- C. Encrypting File System (EFS)
- D. long file names
- E. Data Deduplication

**Answer:** AE

### NEW QUESTION 2

Note: This question is part of a series of questions that present the same scenario. Each question in the series contains a unique solution that might meet the stated goals. Some question sets might have more than one correct solution, while others might not have a correct solution.

After you answer a question in this section, you will NOT be able to return to it. As a result, these questions will not appear in the review screen.

You have a server named Server1 that runs Windows Server 2016. Server1 has the Hyper-V server role and Docker installed.

You pull the Microsoft/iis Docker image to Server1.

You need to view the available space in the Microsoft/iis Docker image. Solution: You run the command `docker run -d Microsoft/iis`.

You open Disk Management on Server1. Does this meet the goal?

- A. Yes
- B. No

**Answer:** B

### NEW QUESTION 3

Note: This question is part of a series of questions that present the same scenario. Each question in the series contains a unique solution that might meet the stated goals. Some question sets might have more than one correct solution, while others might not have a correct solution.

After you answer a question in this section, you will NOT be able to return to it. As a result, these questions will not appear in the review screen.

You have two servers that run Windows Server 2016.

You have a server named Server1 that runs Windows Server 2016. Server1 has the Hyper-V server role and Docker installed.

You pull the Microsoft/iis Docker image to Server1.

You need to view the available space in the Microsoft/iis Docker image. Solution: You run the following commands.

```
docker run --name container1 --d Microsoft/iis docker exec -i container1 cmd.exe
```

```
dir
```

Does this meet the goal?

- A. Yes
- B. No

**Answer:** A

#### Explanation:

References: [https://docs.docker.com/engine/reference/commandline/container\\_exec/#options](https://docs.docker.com/engine/reference/commandline/container_exec/#options) <https://www.windows-commandline.com/get-file-size-directory-size-command/>

### NEW QUESTION 4

You have two Hyper V hosts named Server1 and Server2 that run Windows Server 2012 R2. The servers are nodes in a failover cluster named Cluster1.

You perform a rolling upgrade of the cluster nodes to Windows Server 2016.

You need to ensure that you can implement the Virtual Machine Load Balancing feature. Which cmdlet should you use?

- A. Update-ClusterNetWorkNameResource
- B. Set-GusterGroupSet
- C. Update-ClusterFunctionalLevel
- D. Set-CauClosterRole

**Answer:** C

#### Explanation:

<https://docs.microsoft.com/en-us/windows-server/failover-clustering/cluster-operating-system-rollingupgrade#cluster-os-rolling-upgrade-process>

### NEW QUESTION 5

You have a Windows Server 2016 failover Cluster named Cluster 1 that contains four nodes named Server1 Server2, Server3, and Serve4.

You need to configure Cluster to use directly attached storage to store several virtual machines. You run the `Enable-ClusterStorageSpacesDirect` cmdlet on Server1.

What should you do next?

- A. Run the `Enable-ClusterStorageSpacesDirect` cmdlet on the other three nodes.
- B. Create volumes.
- C. Create storage pool.
- D. Add-ClustcrResource mdlet on all of the nodes.

**Answer:** B

#### Explanation:

References:  
<https://medium.com/beyond-the-helpdesk/setting-up-and-configuring-storage-spaces-direct-in-windows-server-2016-4d2be85a8f7d>

**NEW QUESTION 6**

You have a Hyper-V host named Server1 that runs Windows Server 2016. Server1 hosts a virtual machine named VM1 that runs Windows Server 2016. On VM1, Dynamic Memory is disabled, MAC spoofing is enabled for the virtual network adapter, and checkpoints are disabled. You need to ensure that you can install the Hyper-V server role on VM1. What should you do?

- A. Shut down VM1, enable Dynamic Memory on VM1 and then start VM1.
- B. Configure VM1 to use standard checkpoints.
- C. Disable Hyper-V integration services for VM1 and then restarts VM1.
- D. Shut down VMI, run the Set-VMProcessor cmdlet and then start VM1.

**Answer:** D

**Explanation:**

References:  
<https://docs.microsoft.com/en-us/virtualization/hyper-v-on-windows/user-guide/nested- virtualization>

**NEW QUESTION 7**

You have a server named Server1 that runs Windows Server 2016 and has the File and Storage Services server role installed. Server1 has an ReFS-formatted volume named Volume1 that is 512 GB. Volume1 is mounted as C:\App1\temp. You need to ensure that you can enable deduplication of Volume1. What should you do?

- A. Initialize the physical disk that contains Volume1.
- B. Install a Windows feature.
- C. Format Volume1.
- D. Unmount Volume1.

**Answer:** B

**NEW QUESTION 8**

You have a server named Server1 that runs Windows Server 2016. Windows Defender is enabled on Server1. Server1 runs an application named App1 that stores various types of files in Microsoft OneDrive for Business, MicrosoftOneDrive, and Microsoft SharePoint Online. App1 also interacts with several local services. You need to prevent Windows Defender from scanning any files opened by App1. What should you do on Server1?

- A. From the Windows Defender settings, configure a file exclusion.
- B. Run the New-CiPolicy cmdlet.
- C. Modify the real-time protection settings in Windows Defender.
- D. From the Windows Defender settings, configure a process exclusion.

**Answer:** A

**NEW QUESTION 9**

DRAG DROP  
Your network contains an Active Directory domain named adatim.com. The domain contains four member servers that run Windows Server 2016. On each server, you locally attach three disks and install the Failover Clustering feature. You need to create a volume that uses all the disks. The volume must be highly available. Which three cmdlets should you run in sequence? To answer, move the appropriate cmdlets from the list of cmdlets to the answer area and arrange them in the correct order.

**Cmdlets**

New-Cluster

Initialize-Disk

Enable-VMReplication

Enable-ClusterS2D

New-Volume

New-Partition

**Answer Area**

>

<

- A. Mastered
- B. Not Mastered

**Answer:** A

**Explanation:**

Answer Area

New-Cluster

Enable-ClusterS2D

New-Volume

NEW QUESTION 10

You have a Hyper-V server named Server1 that runs Windows Server 2012 R2. Server1 hosts a virtual machine named VM1 that runs Windows Server 2016. VM1 connects to an external virtual switch named Switch1. You can ping VM1 from Server1. You upgrade Server1 to Windows Server 2016. You need to ensure that you can connect to VM1 by using PowerShell Direct. What should you do?

- A. Configure the firewall rules on Server1.
- B. Enable the Hyper-V extensible switch extensions on Server1.
- C. Upgrade the configuration version of VM1.
- D. Configure the firewall rules on VM1.

Answer: C

NEW QUESTION 10

HOTSPOT  
Your network contains an Active Directory forest The forest contains one domain named contoso.com. The domain contains two domain controllers named DC1 and DC2. DC1 holds all of the operations master roles. During normal network operations, you run the following commands on DC2: Move-ADDirectoryServerOperationMasterRole -Identity "DC2" -OperationMasterRole PDCEmulator Move-ADDirectoryServerOperationMasterRole -Identity "DC2" -OperationMasterRole RIDMaster DC1 fails. You remove DC1 from the network, and then you run the following command: Move-ADDirectoryServerOperationMasterRole -Identity "DC2" -OperationMasterRole SchemaMaster For each of the following statements, select Yes if the statement is true. Otherwise, select No

Statements	Yes	No
DC2 holds the schema master operations role.	<input type="radio"/>	<input type="radio"/>
DC2 holds the PDC emulator master operations role.	<input type="radio"/>	<input type="radio"/>
Currently, you can add additional domains to the forest.	<input type="radio"/>	<input type="radio"/>

- A. Mastered
- B. Not Mastered

Answer: A

Explanation:

Statements	Yes	No
DC2 holds the schema master operations role.	<input type="radio"/>	<input checked="" type="radio"/>
DC2 holds the PDC emulator master operations role.	<input checked="" type="radio"/>	<input type="radio"/>
Currently, you can add additional domains to the forest.	<input type="radio"/>	<input checked="" type="radio"/>

**NEW QUESTION 13**

DRAG DROP

You install a new Nano Server named Nano1. Nano1 is a member of a workgroup and has an IP address of 192.168.1.10.

You have a server named Server1 that runs Windows Server 2016.

From Server1, you need to establish a Windows PowerShell session to Nano1.

How should you complete the PowerShell script? To answer, drag the appropriate cmdlets to the correct targets. Each cmdlet may be used once, more than once, or not at all. You may need to drag the split bar between panes or scroll to view content.

Enable-PSRemoting

Enter-PSSession

Set-Item

Set-ItemProperty

Set-LocalUser

\$ip = "192.168.1.10"

\$user = "Administrator"

WSMan:\localhost\Client\TrustedHosts  
"192.168.1.10"

-ComputerName \$ip -Credential \$user

- A. Mastered
- B. Not Mastered

Answer: A

Explanation:

Enable-PSRemoting

Enter-PSSession

Set-Item

Set-ItemProperty

Set-LocalUser

\$ip = "192.168.1.10"

\$user = "Administrator"

Set-Item  
WSMan:\localhost\Client\TrustedHosts  
"192.168.1.10"

Enter-PSSession  
-ComputerName \$ip -Credential \$user



#### NEW QUESTION 17

##### HOTSPOT

Your network contains an Active Directory domain named contoso.com. The domain contains a DNS server named Server1. Server1 is configured to use a forwarder named server2.contoso.com that has an IP address of 10.0.0.10.

You need to prevent Server1 from using root hints if the forwarder is unavailable.

What command should you run? To answer, select the appropriate options in the answer area.

<div>▼</div> <div> Suspend-DnsServerZone  Set-DnsServer  Set-DnsServerForwarder  Set-DnsServerRootHint </div>	<div>▼</div> <div> -Name *.* -PassThru  -IPAddress 10.0.0.10  -NameServer server2.contoso.com  -UseRootHints. \$false </div>
---	--

- A. Mastered
- B. Not Mastered

**Answer:** A

**Explanation:**

<div>▼</div> <div> Suspend-DnsServerZone  Set-DnsServer  Set-DnsServerForwarder  Set-DnsServerRootHint </div>	<div>▼</div> <div> -Name *.* -PassThru  -IPAddress 10.0.0.10  -NameServer server2.contoso.com  -UseRootHints. \$false </div>
---	--

#### NEW QUESTION 18

You have a Nano Server named Nano1.

Which cmdlet should you use to identify whether the DNS Server role is installed on Nano1?

- A. Find-NanoServerPackage
- B. Get-Package
- C. Find-Package
- D. Get-WindowsOptionalFeature

**Answer:** B

#### NEW QUESTION 21

##### DRAG DROP

You are deploying DirectAccess to a server named DA1. DA1 will be located behind a firewall and will have a single network adapter. The intermediary network will be IPv4.

You need to configure firewall to support DirectAccess.

Which firewall rules should you create for each type of traffic? To answer, drag the appropriate ports and protocols to the correct traffic types. Each port and protocol may be used once, more than once, or not at all. You may need to drag the split bar between panes or scroll to view content.

Ports and Protocols		Answer Area	
IP protocol ID 1	IP Protocol ID 41	Teredo traffic:	
TCP 443	UDP 3544	6to4 traffic:	
		IP-HTTPS:	

- A. Mastered
- B. Not Mastered

**Answer:** A

**Explanation:**

Ports and Protocols

IP protocol ID 1

TCP 443

IP Protocol ID 41

UDP 3544

Answer Area

Teredo traffic:UDP 3544

6to4 traffic:IP Protocol ID 41

IP-HTTPS:TCP 443

NEW QUESTION 26

DRAG DROP

You have a server named Server1 that runs Windows Server 2016. You plan to deploy Internet Information Services (US) in a Windows container. You need to prepare Server1 for the planned deployment. Which three actions should you perform in sequence? To answer, move the appropriate actions from the list of actions to the answer area and arrange them in the correct order

Actions

Install the Hyper-V server role.

Install the Base Container Images.

Install the Container feature.

Install the Web Server role.

Install Docker.

Answer Area

1.

2.

3.

>

<

⬆

⬇

- A. Mastered
- B. Not Mastered

Answer: A

Explanation:

Guaranteed success with Our exam guides

visit - <https://www.certshared.com>

## Answer Area

1. Install the Container feature.
2. Install Docker.
3. Install the Base Container Images.

### NEW QUESTION 29

You have a Hyper-V host named Served That runs Windows Server 2016

Server1 has a virtual machine named VM1 VM1 is configured to run the Docker daemon. On VM1 you have a container network that uses transparent mode

You need to ensure that containers that run on VM1 can obtain IP addresses from DHCP. What should you do?

- A. On VM1, rundocker network connect
- B. On Server1 runGet-VMNetworkAdapter-VMName VM1| Set-VMNetworkAdapter- MacAddressSpoofing On
- C. On Server1, rundocker network connect
- D. On VM1, runGet-VMNetworkAdapter-VMName VM1| Set-VMNetworkAdapter- MacAddressSpoofing On.

**Answer:** D

### NEW QUESTION 31

You have a server named Served that runs Windows Server 2016. Server1 will be used as a VPN

server. You need to configure Server1 to support VPN Reconnect. Which VPN protocol should you use?

- A. PPTP
- B. L2TP
- C. SSTP
- D. IKEv2

**Answer:** D

### NEW QUESTION 34

You have a server named Server1 that runs Windows Server 2016 You install the Docker daemon on

Server1 You need to configure the Docker daemon to accept connections only on TCP port 64500. What should you do?

- A. Run theNew-NetFirewallRulecmdlet
- B. Run theSet-ServiceWindows PowerShell cmdlet.
- C. Edit the daemon.json file.
- D. Edit the configuration json file

**Answer:** C

### NEW QUESTION 38

You have an Active Directory domain named Contoso com The domain contains servers named

Server1 and Server2 that run Windows Server 2016. You install the Remote Access server role on Server1. You install the Network Policy and Access Services server role on Server2. You need to configure Server1 to use Server2 as a RADIUS server.

What should you do?

- A. From Routing and Remote Access, configure the authentication provider.
- B. From the Connection Manager Administration Kit, create a Connection Manager profile
- C. From Server Manager, create an Access Policy.
- D. From Active Directory Users and Computers, modify the Delegation settings of the Server1 computer account.

**Answer:** A

### NEW QUESTION 41

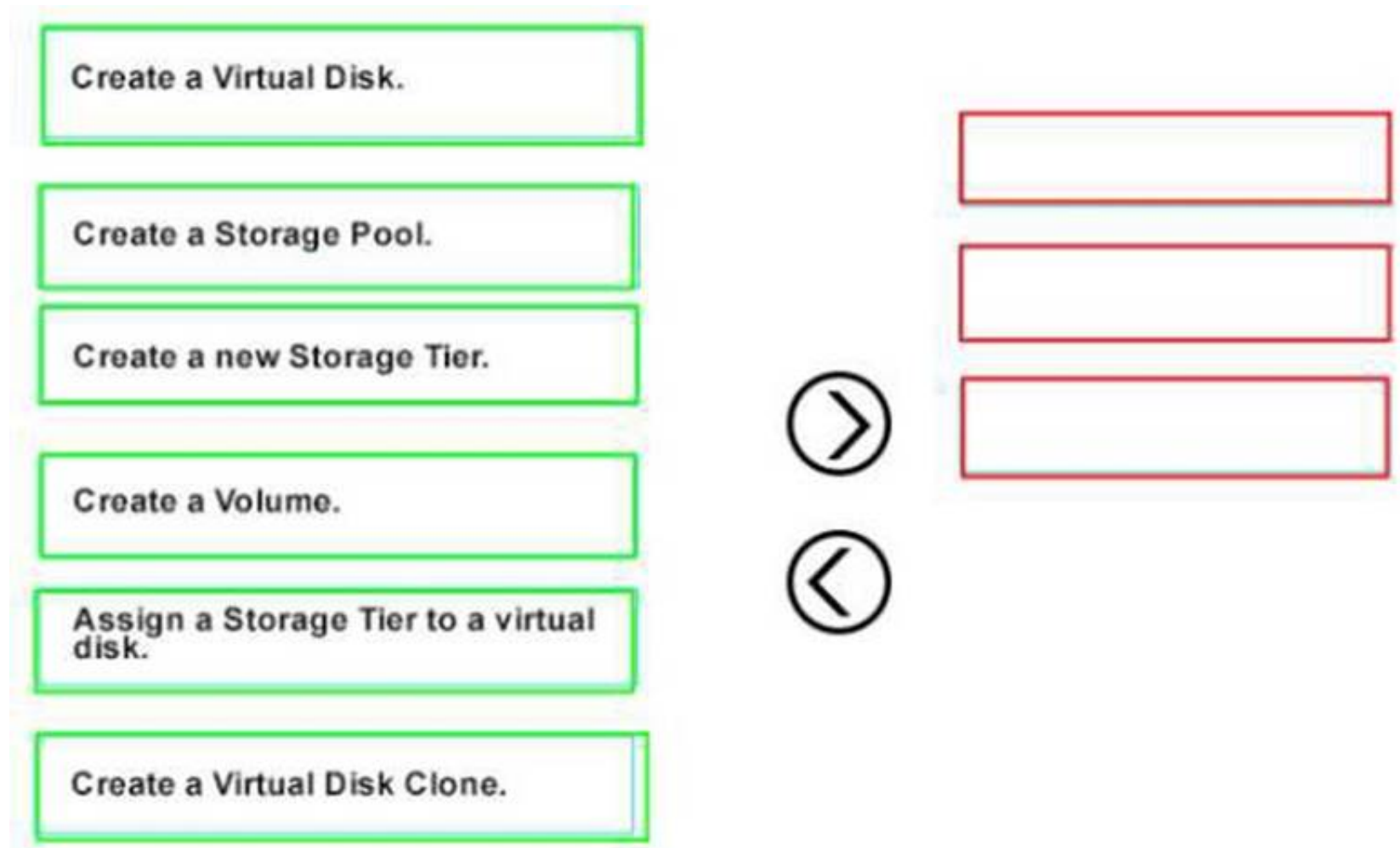
DRAG DROP

You have a server that runs Windows Server 2016 You install three additional physical disks named Disk1. Disk2. and Disk3 You plan to use these physical disks to store data

You need to create a volume to store data The solution must prevent data loss in the event of a single disk failure

Which three actions should you perform in sequence'? To answer, move the appropriate actions from the list of actions to the answer area and arrange them in the correct order

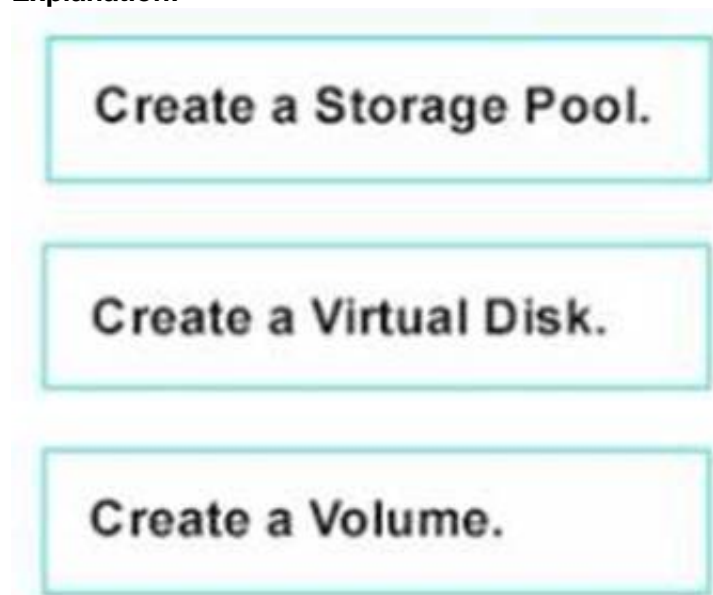




- A. Mastered
- B. Not Mastered

**Answer:** A

**Explanation:**



#### NEW QUESTION 45

You have a server that runs Windows Server 2016.  
 The server contains a storage pool named Pool1. Pool1 contains five physical disks named Disk1, Disk2, Disk3, Disk4, and Disk5.  
 A virtual disk named VirtualDisk1 is stored in pool1. VirtualDisk1 uses the parity storage layout. Disk3 fails.  
 You need to remove Disk3 from Pool1.  
 Which two commands should you run? Each correct answer presents part of the solution.

- A. Update-StoragePool -FriendlyName Pool1
- B. Set-ResiliencySetting -StoragePool Pool1 -PhysicalDiskRedundancyDefault 4
- C. Reset-PhysicalDisk -FriendlyName Disk3
- D. Set-PhysicalDisk -FriendlyName Disk3 -Usage Retired
- E. Remove-PhysicalDisk -FriendlyName Disk3

**Answer:** BE

#### NEW QUESTION 49

Your network contains an Active Directory domain named contoso.com. The domain contains two servers named Server1 and Server2 that have the same hardware configuration.  
 You need to asynchronously replicate volume F: from Server1 to Server2. What should you do?

- A. Run New-SRPartnership and specify the -ReplcationModeparameter.
- B. install the Failover Clustering feature and create a new cluster resource group.

- C. Install the Failover Clustering feature and use Cluster Shared Volumes (CSV).
- D. Run Set-DfsrServiceConfiguration and specify the -RPCPort parameter

Answer: A

#### NEW QUESTION 51

##### HOTSPOT

You have a server named Server1 that runs Windows Server 2016. Server1 has the Windows Application Proxy role service installed. You are publishing an application named App1 that will use Integrated Windows authentication as shown in the following graphic.



Use the drop-down menus to select the answer choice that completes each statement based on the information presented in the graphic.

Before you can complete the wizard, you must [answer choice]

- change the external certificate
- configure the Backend server SPN
- select Enable HTTP to HTTPS redirection

To ensure that users can access App1 externally, you must change the External URL to [answer choice.]

- https://app1.contoso.com/app1
- https://server02.contoso.com/app1
- https://server02.contoso.com/publish/app1

- A. Mastered
- B. Not Mastered

Answer: A

Explanation:

Before you can complete the wizard, you must [answer choice]

▼

change the external certificate  
configure the Backend server SPN  
select Enable HTTP to HTTPS redirection

To ensure that users can access App1 externally, you must change the External URL to [answer choice.]

▼

https://app1.contoso.com/app1  
https://server02.contoso.com/app1  
https://server02.contoso.com/publish/app1

**NEW QUESTION 56**

You have a failover cluster named Cluster1. A virtual machine named VM1 is a highly available virtual machine that runs on Cluster1. A custom application named App1 runs on VM1. You need to configure monitoring of VM1. If App1 adds an error entry to the Application event log, VM1 should be automatically rebooted and moved to another cluster node. Which tool should you use?

- A. Hyper-V Manager
- B. Failover Cluster Manager
- C. Server Manager
- D. Resource Monitor

**Answer:** B

**NEW QUESTION 57**

**HOTSPOT**  
Your network contains an Active Directory domain named contoso.com. The domain contains four servers named Server1, Server2, Server3, and Server4 that run Windows Server 2016. Server1 and Server2 are nodes in a Hyper-V cluster named Cluster1. You have a highly available virtual machine named VM1. Server1 is the owner node of VM1. Server3 and Server4 are nodes of a scale-out file server named Cluster2. The storage on Server1 is configured as shown in the following table.

Location	Type
C:\ClusterStorage\Volume1	iSCSI Cluster Shared Volumes (CSV)
D:\	A locally attached disk
E:\	An iSCSI LUN
\\Cluster2\Share1	A file share on Cluster2

You need to move the virtual disk of VM1 to a different location. What should you do? To answer, select the appropriate options in the answer area.

Tool you should move the virtual disk of VM1:

▼

Disk Management  
Failover Cluster Manager  
Hyper-V Manager  
Server Manager

Location to which you should move the virtual disk of VM1:

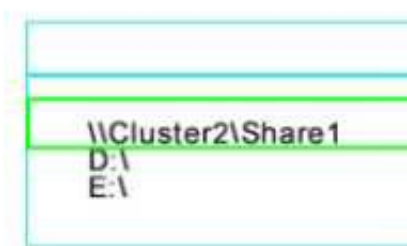
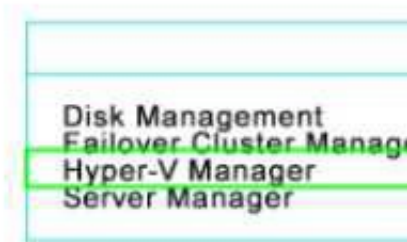
▼

\\Cluster2\Share1  
D:\  
E:\

- A. Mastered
- B. Not Mastered

Answer: A

Explanation:



NEW QUESTION 62

DRAG DROP

You have a server named Server1 that runs Windows Server 2016.

You need to deploy the first node cluster of a Network Controller cluster

Which four cmdlets should you run in sequence? To answer, move the appropriate cmdlets from the list of cmdlets to the answer area and arrange them in the correct order

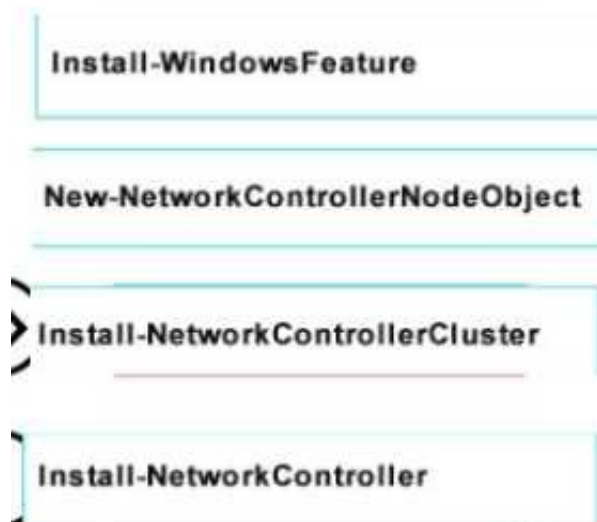


Actions	Answer Area
Install-WindowsFeature	1. <input type="text"/>
New-NetworkControllerNodeObject	2. <input type="text"/>
Enable-NetworkControllerNode	3. <input type="text"/>
Install-NetworkController	4. <input type="text"/>
Install-NetworkControllerCluster	

- A. Mastered
- B. Not Mastered

**Answer:** A

**Explanation:**



```

Install-WindowsFeature
New-NetworkControllerNodeObject
Install-NetworkControllerCluster
Install-NetworkController
    
```

#### NEW QUESTION 65

Your company has 10 offices. Each office has a local network that contains several Hyper-V hosts that run Windows Server 2016. All of the offices are connected by high speed, low latency WAN links. You need to ensure that you can use QoS policies for Live Migration traffic between the offices. Which component should you install?

- A. the Multipath I/O feature
- B. the Routing role service
- C. the Network Controller server role
- D. the Canary Network Diagnostics feature
- E. the Data Center Bridging feature

**Answer:** CE

#### NEW QUESTION 68

You have a server named Server1 that runs Windows Server 2016 You need to configure Server1 as a multitenant RAS Gateway. What should you install on Server1?

- A. the Network Policy and Access Services server role
- B. the Remote Access server role
- C. the Data Center Bridging feature
- D. the Network Controller server role

**Answer:** B

#### NEW QUESTION 69

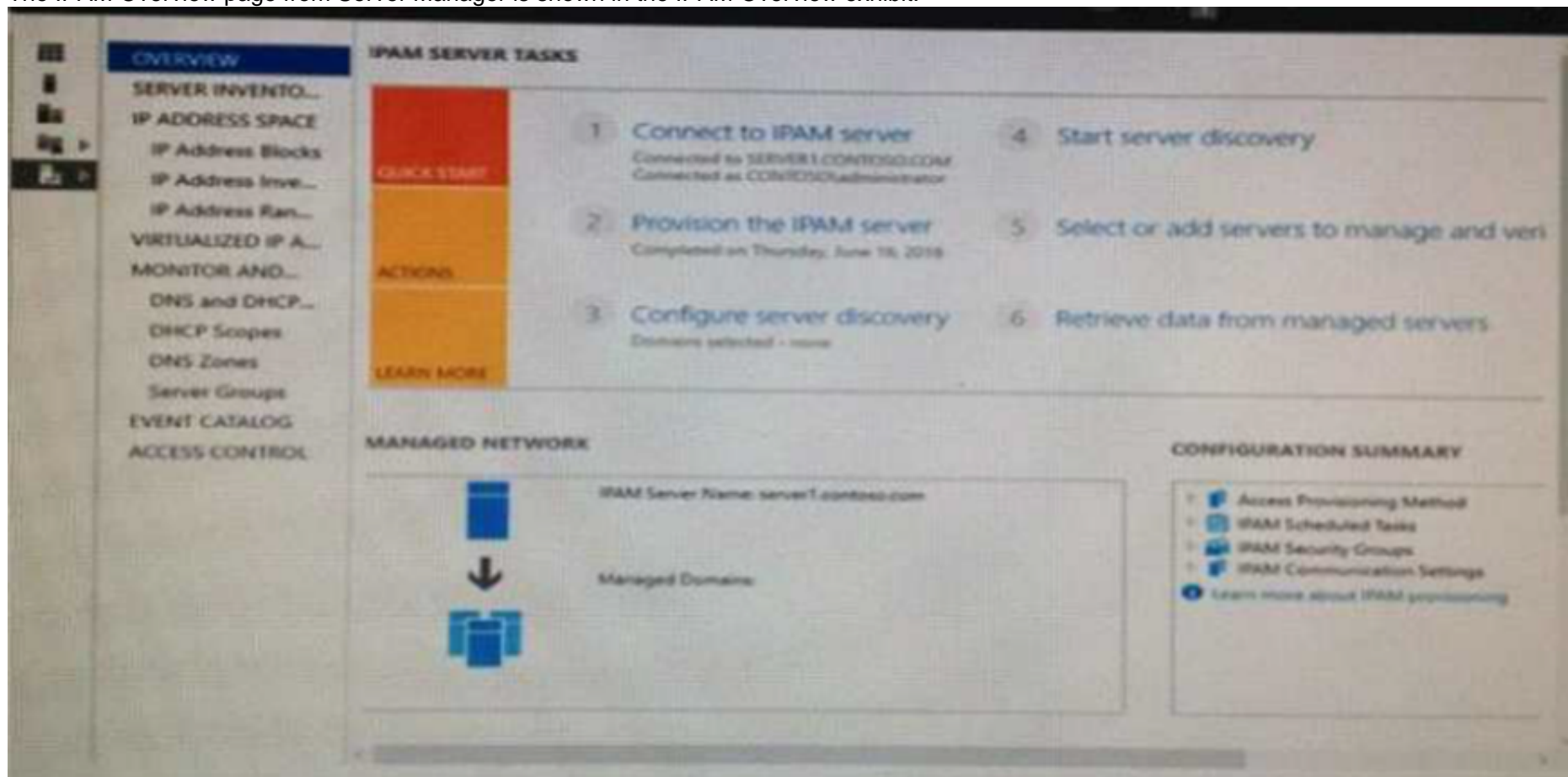
##### HOTSPOT

Your company has a testing environment that contains an Active Directory domain named contoso.com The domain contains a server named Server1 that runs Windows Server 2016. Server1 has IP Address Management (IPAM) installed IPAM has the following configuration.



Version : 6.3.0.1  
 Port : 4885  
 ProvisioningMethod : Automatic  
 GpoPrefix : IPAM  
 HMACKey : System.Security.SecureString

The IPAM Overview page from Server Manager is shown in the IPAM Overview exhibit.



The group policy configurations are shown in the GPO exhibit.



For each of the following statements, select Yes if the statement is true Otherwise, select No

Statements	Yes	No
If a DNS server is added to contoso.com, the server will be discovered by IPAM automatically.	<input type="radio"/>	<input type="radio"/>
If you manually add a DHCP server named Server3 to IPAM and set the Manageability status to Managed, the IPAM_DHCP Group Policy will apply to Server3.	<input type="radio"/>	<input type="radio"/>
If you click Start server discovery, the domain controllers in contoso.com will be discovered by IPAM.	<input type="radio"/>	<input type="radio"/>

- A. Mastered
- B. Not Mastered

Answer: A

Explanation:

Statements	Yes	No
If a DNS server is added to contoso.com, the server will be discovered by IPAM automatically.	<input type="radio"/>	<input checked="" type="radio"/>
If you manually add a DHCP server named Server3 to IPAM and set the Manageability status to Managed, the IPAM_DHCP Group Policy will apply to Server3.	<input checked="" type="radio"/>	<input type="radio"/>
If you click Start server discovery, the domain controllers in contoso.com will be discovered by IPAM.	<input type="radio"/>	<input checked="" type="radio"/>

NEW QUESTION 71

You need to modify the GPO prefix by IPAM. What should you do?

- A. Run theSet-IpamConfigurationcmdlet
- B. ClickProvision the IPAM serverin Server Manager.
- C. ClickConfigure server discoveryin Server Manage
- D. Run theInvoke-IpamGpoProvisioningcmdlet

Answer: A

NEW QUESTION 76

HOTSPOT

Your network contains an Active Directory domain named contoso.com. The domain contains a domain controller named Server1 and a member server named Server2.

Server1 has the DNS Server role installed Server2 has IP Address Management IPAM installed The IPAM server retrieves zones from Server1 as shown in the following table

Zone name	Dynamic update setting	Access scope
Adatum.com	Secure	\Global
Fabrikam.com	None	\Global\Scope1

The IPAM server has one access policy configured as shown in the exhibit.





For each of the following statements, select Yes, if the statement is true. Otherwise, select No.

Answer Area

Statements	Yes	No
User1 can add a host (A) record) to adatum.com.	<input type="radio"/>	<input type="radio"/>
User1 can add a host (A) record to fabrikam.com.	<input type="radio"/>	<input type="radio"/>
User1 can delete the fabrikam.com zone.	<input type="radio"/>	<input type="radio"/>

- A. Mastered
- B. Not Mastered

Answer: A

Explanation:

Statements	Yes	No
User1 can add a host (A) record) to adatum.com.	<input type="radio"/>	<input checked="" type="radio"/>
User1 can add a host (A) record to fabrikam.com.	<input type="radio"/>	<input checked="" type="radio"/>
User1 can delete the fabrikam.com zone.	<input checked="" type="radio"/>	<input type="radio"/>

NEW QUESTION 78

HOTSPOT

You have a Hyper-V host that runs Windows Server 2016 The Hyper-V host has a virtual machine named VM1  
 You have a VHD named VHD1 vhdx that has a generalized image of Windows Server 2016. You plan to create multiple virtual machines that will use the generalized image  
 You need to create differencing disks based on VHD1 vhdx  
 What command should you run? To answer, select the appropriate options in the answer area

▼

Add-VMHardDiskDrive  
New-VHD  
Set-VHD  
Set-VMHardDiskDrive

-Path "C:\VHDs\VHD1Diff.VHDX"

▼

-ParentPath  
-SourceDisk

"C:\VHDs\VHD1.VHDX" -Differencing

- A. Mastered
- B. Not Mastered

Answer: A

Explanation:

▼

Add-VMHardDiskDrive  
New-VHD  
Set-VHD  
Set-VMHardDiskDrive

-Path "C:\VHDs\VHD1Diff.VHDX"

▼

-ParentPath  
-SourceDisk

"C:\VHDs\VHD1.VHDX" -Differencing

NEW QUESTION 79

DRAG DROP

Your network contains an Active Directory domain named contoso.com. The domain contains two servers named Server1 and Server2 that run Windows Server 2016. Server1 has IP Address Management (IPAM) installed. Server2 has Microsoft System Center 2016 Virtual Machine Manager (VMM) installed. You need to integrate IPAM and VMM. Which types of objects should you create on each server? To answer, drag the appropriate object types to the correct servers. Each object type may be used once, more than once, or not at all. You may need to drag the split bar between panes or scroll to view content.

Access policy

Run As Account

User Role

Network Service

Service Template

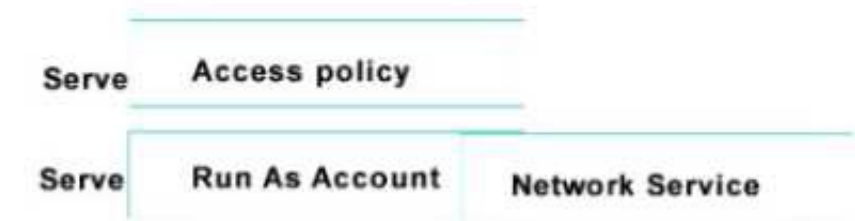
Server1: Object

Server2: Object Object

- A. Mastered
- B. Not Mastered

Answer: A

Explanation:



#### NEW QUESTION 83

Note: This question is part of a series of questions that use the same similar answer choices. An answer choice may be correct for more than one question in the series. Each question is independent of the other questions in this series. Information and details provided in a question apply only to that question.

You have a Hyper-V host named Server1 that runs Windows Server 2016 and a two-node scale-out file server cluster named Cluster1.

A virtual machine named VM1 runs on Server1.

You need to migrate the storage on VM1 to Cluster1. Which tool should you use?

- A. the clussvc.exe command
- B. the cluster.exe command
- C. the Computer Management console
- D. the configurehyperv.exe command
- E. the Disk Management console
- F. the Failover Cluster Manager console
- G. the Hyper-V Manager console
- H. the Server Manager Desktop app

**Answer: G**

#### NEW QUESTION 86

Note: This question is part of a series of questions that use the same similar answer choices. An answer choice may be correct for more than one question in the series. Each question is independent of the other questions in this series. Information and details provided in a question apply only to that question.

You have a two-node Hyper-V cluster named Cluster1. A virtual machine named VM1 runs on Cluster1.

You need to configure monitoring of VM1. The solution must move VM1 to a different node if the Print Spooler service on VM1 stops unexpectedly. Which tool should you use?

- A. the clussvc.exe command
- B. the cluster.exe command
- C. the Computer Management console
- D. the configurehyperv.exe command
- E. the Disk Management console
- F. the Failover Cluster Manager console
- G. the Hyper-V Manager console
- H. the Server Manager Desktop app

**Answer: F**

#### NEW QUESTION 87

Note: This question is part of a series of questions that use the same similar answer choices. An answer choice may be correct for more than one question in the series. Each question is independent of the other questions in this series. Information and details provided in a question apply only to that question.

You have a two-node Hyper-V cluster named Cluster1 at a primary location and a stand-alone Hyper-V host named Server1 at a secondary location.

A virtual machine named VM1 runs on Cluster1. You configure a Hyper-V Replica of VM1 to Server1. You need to perform a Test Failover of VM1. Which tool should you use?

- A. the clussvc.exe command
- B. the cluster.exe command
- C. the Computer Management console
- D. the configurehyperv.exe command
- E. the Disk Management console
- F. the Failover Cluster Manager console
- G. the Hyper-V Manager console
- H. the Server Manager Desktop app

**Answer: G**

#### NEW QUESTION 90

In this section, you'll see one or more sets of questions with the same scenario and problem. Each question presents a unique solution to the problem, and you must determine whether the solution meets the stated goals. Any of the solutions might solve the problem. It is also possible that none of the solutions solve the problem.

Once you answer a question in this section, you will NOT be able to return to it. As a result, these questions will not appear in the review screen.

Note: This question is part of a series of questions that present the same scenario. Each question in the series contains a unique solution. Determine whether the solution meets the stated goals.

Your network contains an Active Directory forest named contoso.com. The forest contains a member server named Server1 that runs Windows Server 2016. All domain controllers run Windows Server 2012 R2.

Contoso.com has the following configuration:



```
PS C:\> (Get-ADForest). ForestMode
Windows2008R2Forest

PS C:\> (Get-ADDomain). DomainMode
Windows2008R2Domain
PS C:\>
```

You plan to deploy an Active Directory Federation Services (AD FS) farm on Served and to configure device registration You need to configure Active Directory to support the planned deployment. Solution You upgrade a domain controller to Windows Server 2016 Does this meet the goal?

- A. Yes
- B. No

**Answer: B**

#### NEW QUESTION 94

In this section, you'll see one or more sets of questions with the same scenario and problem Each question presents a unique solution to the problem, and you must determine whether the solution meets the stated goals Any of the solutions might solve the problem. It is also possible that none of the solutions solve the problem.

Once you answer a question in this section, you will NOT be able to return to it As a result. these questions will not appear in the review screen

Note This question is part of a series of questions that present the same scenario Each question in the series contains a unique solution Determine whether the solution meets the stated goals.

Your network contains an Active Directory forest named contoso.com. The forest contains a member server named Server1 that runs Windows Server 2016 All domain controllers run Windows Server 2012 R2

Contoso com has the following configuration

```
PS C:\> (Get-ADForest). ForestMode
Windows2008R2Forest

PS C:\> (Get-ADDomain). DomainMode
Windows2008R2Domain
PS C:\>
```

You plan to deploy an Active Directory Federation Services (AD FS) farm on Server1 and to configure device registration You need to configure Active Directory to support the planned deployment. Solution You raise the domain functional level to Windows Server 2012R2. Does this meet the goal?

- A. Yes
- B. No

**Answer: B**

#### NEW QUESTION 96

In this section, you'll see one or more sets of questions with the same scenario and problem Each question presents a unique solution to the problem, and you must determine whether the solution meets the stated goals. Any of the solutions might solve the problem. It is also possible that none of the solutions solve the problem.

Once you answer a question in this section, you will NOT be able to return to it. As a result, these questions will not appear in the review screen

Note: This question is part of a series of questions that present the same scenario. Each question in the series contains a unique solution. Determine whether the solution meets the stated goals.

Your network contains an Active Directory domain named contoso.com. The domain contains a DNS server named Server1. All client computers run Windows 10. On Server1, you have the following zone configuration

ZoneName	ZoneType	IsAutoCreated	IsDsIntegrated	IsReverseLookupZone	IsSign
-----	-----	-----	-----	-----	-----
_msdcs.contoso.com	Primary	False	True	False	False
adatum.com	Forwarder	False	False	False	
contoso.com	Primary	False	True	False	False
fabrikam.com	Primary	False	False	False	True
TrustAnchors	Primary	False	True	False	False

You have the following subnets defined on Server1.

Name	IPv4Subnet	IPv6Subnet
-----	-----	-----
Subnet1	{10.0.0.0/24}	
Subnet2	{10.0.1.0/24}	
Subnet3	{192.168.15.0/24}	
Subnet4	{172.16.1.0/24}	

You need to prevent Server1 from resolving queries from DNS clients located on Subnet4 Server1 must resolve queries from all other DNS clients Solution From a Group Policy object (GPO) in the domain, you modify the Network List Manager Policies Does this meet the goal?

- A. Yes
- B. No

Answer: B

NEW QUESTION 97

In this section, you'll see one or more sets of questions with the same scenario and problem Each question presents a unique solution to the problem, and you must determine whether the solution meets the stated goals. Any of the solutions might solve the problem. It is also possible that none of the solutions solve the problem. Once you answer a question in this section, you will NOT be able to return to it. As a result, these questions will not appear in the review screen Note: This question is part of a series of questions that present the same scenario. Each question in the series contains a unique solution. Determine whether the solution meets the stated goals. Your network contains an Active Directory domain named contoso.com. The domain contains a DNS server named Server1. All client computers run Windows 10. On Server1, you have the following zone configuration

ZoneName	ZoneType	IsAutoCreated	IsDsIntegrated	IsReverseLookupZone	IsSign
-----	-----	-----	-----	-----	-----
_msdcs.contoso.com	Primary	False	True	False	False
adatum.com	Forwarder	False	False	False	
contoso.com	Primary	False	True	False	False
fabrikam.com	Primary	False	False	False	True
TrustAnchors	Primary	False	True	False	False

You have the following subnets defined on Server1.

Name	IPv4Subnet	IPv6Subnet
-----	-----	-----
Subnet1	{10.0.0.0/24}	
Subnet2	{10.0.1.0/24}	
Subnet3	{192.168.15.0/24}	
Subnet4	{172.16.1.0/24}	

You need to prevent Server1 from resolving queries from DNS clients located on Subnet4 Server1 must resolve queries from all other DNS clients Solution From the Security setting of each zone on Server1, you modify the permissions Does this meet the goal?

- A. Yes
- B. No

Answer: B

NEW QUESTION 99

In this section, you'll see one or more sets of questions with the same scenario and problem Each question presents a unique solution to the problem, and you must determine whether the solution meets the stated goals. Any of the solutions might solve the problem. It is also possible that none of the solutions solve the problem. Once you answer a question in this section, you will NOT be able to return to it. As a result, these questions will not appear in the review screen Note: This question is part of a series of questions that present the same scenario. Each question in the series contains a unique solution. Determine whether the solution meets the stated goals. Your network contains an Active Directory domain named contoso.com. The domain contains a DNS server named Server1. All client computers run Windows 10.



On Server1, you have the following zone configuration

ZoneName	ZoneType	IsAutoCreated	IsDsIntegrated	IsReverseLookupZone	IsSign
-----	-----	-----	-----	-----	-----
_msdcs.contoso.com	Primary	False	True	False	False
adatum.com	Forwarder	False	False	False	
contoso.com	Primary	False	True	False	False
fabrikam.com	Primary	False	False	False	True
TrustAnchors	Primary	False	True	False	False

You have the following subnets defined on Server1.

Name	IPv4Subnet	IPv6Subnet
----	-----	-----
Subnet1	{10.0.0.0/24}	
Subnet2	{10.0.1.0/24}	
Subnet3	{192.168.15.0/24}	
Subnet4	{172.16.1.0/24}	

You need to prevent Server1 from resolving queries from DNS clients located on Subnet4 Server1 must resolve queries from all other DNS clients

Solution From Windows Firewall with Advanced Security on Server1, you create an inbound rule Does this meet the goal?

- A. Yes
- B. No

Answer: A

#### NEW QUESTION 103

In this section, you'll see one or more sets of questions with the same scenario and problem Each question presents a unique solution to the problem, and you must determine whether the solution meets the stated goals. Any of the solutions might solve the problem. It is also possible that none of the solutions solve the problem.

Once you answer a question in this section, you will NOT be able to return to it. As a result, these questions will not appear in the review screen

Note: This question is part of a series of questions that present the same scenario. Each question in the series contains a unique solution. Determine whether the solution meets the stated goals.

Your network contains an Active Directory domain named contoso.com. The domain contains a DNS server named Server1. All client computers run Windows 10. On Server1, you have the following zone configuration

ZoneName	ZoneType	IsAutoCreated	IsDsIntegrated	IsReverseLookupZone	IsSign
-----	-----	-----	-----	-----	-----
_msdcs.contoso.com	Primary	False	True	False	False
adatum.com	Forwarder	False	False	False	
contoso.com	Primary	False	True	False	False
fabrikam.com	Primary	False	False	False	True
TrustAnchors	Primary	False	True	False	False

You have the following subnets defined on Server1.

Name	IPv4Subnet	IPv6Subnet
----	-----	-----
Subnet1	{10.0.0.0/24}	
Subnet2	{10.0.1.0/24}	
Subnet3	{192.168.15.0/24}	
Subnet4	{172.16.1.0/24}	

You need to prevent Server1 from resolving queries from DNS clients located on Subnet4 Server1 must resolve queries from all other DNS clients

Solution From Windows PowerShell on Server1, you run the Export-DnsServerDnsSecPublicKey cmdlet Does this meet the goal?

- A. Yes
- B. No

Answer: B

#### NEW QUESTION 108

In this section, you'll see one or more sets of questions with the same scenario and problem Each question presents a unique solution to the problem, and you must determine whether the solution meets the stated goals Any of the solutions might solve the problem. It is also possible that none of the solutions solve the problem.

Once you answer a question in this section, you will NOT be able to return to it As a result. these questions will not appear in the review screen

Note This question is part of a series of questions that present the same scenario Each question in the series contains a unique solution Determine whether the

solution meets the stated goals.

Your network contains an Active Directory forest named contoso.com. The forest contains a member server named Server1 that runs Windows Server 2016 All domain controllers run Windows Server 2012 R2

Contoso com has the following configuration

```
PS C:\> (Get-ADForest). ForestMode
Windows2008R2Forest

PS C:\> (Get-ADDomain). DomainMode
Windows2008R2Domain
PS C:\>
```

You plan to deploy an Active Directory Federation Services (AD FS) farm on Server1 and to configure

device registration You need to configure Active Directory to support the planned deployment. Solution You raise the forest functional level to Windows Server 2012R2.

Does this meet the goal?

- A. Yes
- B. No

**Answer:** A

#### NEW QUESTION 111

Note: This question is part of a series of questions that present the same scenario. Each question in the series contains a unique solution that might meet the stated goals. Some question sets might have more than one correct solution, while others might not have a correct solution.

After you answer a question in this section, you will NOT be able to return to it. As a result, these questions will not appear in the review screen.

You have two servers that run Windows Server 2016.

You plan to create a Network Load Balancing (NLB) cluster that will contain both servers. You need to configure the network cards on the servers for the planned NLB configuration.

Solution: You configure the network cards to be on the same subnet and to have static IP addresses. You configure the cluster to use unicast.

Does this meet the goal?

- A. Yes
- B. No

**Answer:** A

#### Explanation:

References:

<https://technet.microsoft.com/en-us/windows-server-docs/networking/technologies/network-load-balancing>

#### NEW QUESTION 112

Note: This question is part of a series of questions that present the same scenario. Each question in the series contains a unique solution that might meet the stated goals. Some question sets might have more than one correct solution, while others might not have a correct solution.

After you answer a question in this section, you will NOT be able to return to it. As a result, these questions will not appear in the review screen.

You are a server administrator at a company named Contoso, Ltd.

Contoso has a Windows Server 2016 Hyper-V environment configured as shown in the following table.

Hyper-V host name	Configuration	Virtual switch name
Host1	- Uses an Intel processor - Is a member of a SAN named SAN1	Switch1
Host2	- Uses an AMD processor - Has local storage only	Switch2
Host3	- Uses an Intel processor - Is a member of a SAN named SAN1	Switch1
Host4	- Uses an Intel processor - Has local storage only	Switch2

All of the virtual switches are of the external type.

You need to ensure that you can move virtual machines between the hosts without causing the virtual machines to disconnect from the network.

Solution: You implement live migration by using Host3 and Host4. Does this meet the goal?

- A. Yes
- B. No

**Answer:** A

#### NEW QUESTION 116

Note This question is part of a series of questions that present the same scenario. Each question in the series contains a unique solution that might meet the stated goals. Some question sets might have more than one correct solution, while others might not have a correct solution.

After you answer a question in this section, you will NOT be able to return to it. As a result, these questions will not appear in the review screen.

You are a server administrator at a company named Contoso, Ltd.

Contoso has a Windows Server 2016 Hyper-V environment configured as shown in the following table.

Hyper-V host name	Configuration	Virtual switch name
Host1	- Uses an Intel processor - Is a member of a SAN named SAN1	Switch1
Host2	- Uses an AMD processor - Has local storage only	Switch2
Host3	- Uses an Intel processor - Is a member of a SAN named SAN1	Switch1
Host4	- Uses an Intel processor - Has local storage only	Switch2

All of the virtual switches are of the external type.

You need to ensure that you can move virtual machines between the hosts without causing the virtual machines to disconnect from the network.

Solution: You implement live migration by using Host1 and Host2. Does this meet the goal?

A. Yes

B. No

**Answer: B**

#### NEW QUESTION 119

Note: This question is part of a series of questions that present the same scenario. Each question in the series contains a unique solution that might meet the stated goals. Some question sets might have more than one correct solution, while others might not have a correct solution.

Your network contains an Active Directory forest

You install Windows Server 2016 on 10 virtual machines.

You need to deploy the Web Server (IIS) server role identically to the virtual machines.

Solution: You use Windows PowerShell Desired State Configuration (DSC) to create a default configuration and then you apply the configuration the virtual

A. Yes

B. No

**Answer: A**

**Explanation:**

References:

<https://www.simple-talk.com/sysadmin/powershell/powershell-desired-state-configuration-the-basics/>

#### NEW QUESTION 121

Note: This question is part of a series of questions that present the same scenario. Each question in the series contains a unique solution that might meet the stated goals. Some question sets might have more than one correct solution, while others might not have a correct solution.

Your network contains an Active Directory forest

You install Windows Server 2016 on 10 virtual machines.

You need to deploy the Web Server (IIS) server role identically to the virtual machines.

Solution: You create a software installation package, and then you publish the package to the virtual machines by using a Group Policy object (GPO)

Does this meet the goal?

A. Yes

B. No

**Answer: B**

#### NEW QUESTION 123

You have a Windows Server 2016 Hyper-V failover cluster that contains two nodes named Node1 and Node2

On Node1, you create a virtual machine named VM01 by using Hyper-V Manager.

You need to configure VM01 to move to Node2 automatically if Node1 becomes unavailable What should you do?

A. From Failover Cluster manager, run the configure Role actions.

B. From Hyper-V Manager, click VM01 and click Enable Replication.

C. From Hyper-V Manager Click Node 1 and the modify the hyper-V settings.

D. From Windows Powershell, run the Enable-VMReplication cmdlet.



**Answer:** A

**Explanation:**

<http://windowsitpro.com/hyper-v/make-vm-highly-available-windows-server-2012>

#### NEW QUESTION 124

Note This question is part of a series of questions that use the same scenario. For your convenience, the scenario is repeated in each question. Each question presents a different goal and answer choices, but the text of the scenario is exactly the same in each question in this series.

Start of Repeated Scenario:

Your network contains an Active Directory domain named contoso.com. The functional level of the forest and the domain is Windows Server 2008 R2. All servers in the domain run Windows Server 2016 Standard. The domain contains 300 client computers that run either Windows 8.1 or Windows 10.

The domain contains nine servers that are configured as shown in the following table.

Name	Configuration	Planned changes
Server1	Domain controller	None
Server2	File server	Run Failover Clustering and Storage Spaces Direct
Server3	File server	Run Failover Clustering and Storage Spaces Direct
Server4	Hyper-V host	Run shielded virtual machines
Server5	Hyper-V host	None
Server6	Member server	Run Active Directory Federation Services (AD FS)
VM1	Virtual machine hosted on Server5	None
VM2	Virtual machine hosted on Server5	None
VM3	Virtual machine hosted on Server5	None

The virtual machines are configured as follows:

- Each virtual machine has one virtual network adapter.
  - VM1 and VM2 are part of a Network Load Balancing (NLB) cluster.
  - All of the servers on the network can communicate with all of the virtual machines.
- End of repeated Scenario.

On server4, you plan to provision a new volume that will be used to create large, fixed-size VHDX files.

Which type of file system should you use the new volume to minimize the amount of time required to create the VHDX files?

- A. ReFS
- B. NTFS
- C. CVFS
- D. exFAT

**Answer:** A

#### NEW QUESTION 126

You have a server named Server1 that runs Windows Server 2016.

The Windows Server 2016 installation media is mounted as drive D.

You copy the NanoServerImageGenerator folder from the D:\NanoServer folder to the C:\NanoServer folder.

You need to create a custom Nano Server image that includes the Hyper-V server role. The image will be used to deploy Nano Servers to physical servers.

Which two commands should you run? Each correct answer presents part of the solution.

- A. New-NanoServerImage -Edition Standard -DeploymentType Guest -MediaPath D:\ -TargetPath.\NanoServerImage\NanoServer.wim -Compute
- B. Install-PackageProvider NanoServerPackage
- C. Import-PackageProvider NanoServerPackage
- D. New-NanoServerImage -Edition Standard -DeploymentType Host -MediaPath D:\ -TargetPath.\NanoServerImage\NanoServer.wim -Compute
- E. Import-Module C:\NanoServer\NanoServerImageGenerator

**Answer:** DE

#### NEW QUESTION 131

You have a server named Server1 that runs Windows Server 2016. You need to install the DNS Server role on Server1. What should you run?

- A. the dns.exe command
- B. the optionalfeatures.exe command
- C. the Install-Package cmdlet
- D. the Enable-WindowsOptionalFeature cmdlet

**Answer:** D

#### NEW QUESTION 136

You have a server named Server 1 that runs Windows Server 2016.

Server 1 has Internet connectivity. You have a Nano Server image.

You need to download and save a Nano Server package in the Nano Server image. The package is NOT included in the Windows Server 2016 installation media.

Which two cmdlets should you run on Server1.

- A. Set-PackageSource
- B. Install-PackageProvider
- C. Add-AppxProvisionedPackage

- D. Save-NanoServerPackage
- E. Add-WindowsPackage

Answer: BD

NEW QUESTION 138

You have a server named Server 1 that runs Windows Server 2016 and has the Hyper-V server role installed. On Server1, you plan to create a virtual machine named VM1. You need to ensure that you can start VM1 from the network. What are two possible ways to achieve the goal? Each correct answer presents a complete solution.

- A. Create a generation 2 virtual machine.
- B. Create a generation 1 virtual machine and run theEnable-NetAdapterPackageDirectcmdlet.
- C. Create a generation 1 virtual machine that has a legacy network adapter.
- D. Create a generation 1 virtual machine and configure a single root I/O virtualization (SRV-IO) interface for the network adapter.

Answer: AC

NEW QUESTION 143

You have a Hyper-V host that runs Windows Server 2016. The host contains a virtual machine named VM1. VM1 has resource metering enabled. You need to use resource metering to track the amount of network traffic that VM1 sends to the 10.0.0.0/8 network. Which cmdlet should you run?

- A. Add-VMNetworkAdapteiAd
- B. Set-VMNetworkAdapter
- C. New-VMResourcePool
- D. Set-VMNetworkAdapterRoutingDomamMapping

Answer: A

NEW QUESTION 146

DRAG DROP

Your network contains two Hyper-V servers named Server1 and Server2. Server1 has Windows Server 2012 R2 installed. Server2 has Windows Server 2016 installed.

You perform a live migration of a virtual machine named VM1 from Server1 to Server2. You need to create a production checkpoint for VM1 on Server2. Which three Windows PowerShell cmdlets should you run in sequence? To answer, move the appropriate Windows PowerShell cmdlets from the list of actions to the answer area and arrange them in the correct order.

Cmdlets

Set-VM

Update-VMVersion

Checkpoint-VM

Set-VMHost

Stop-VM

Answer Area

<

>

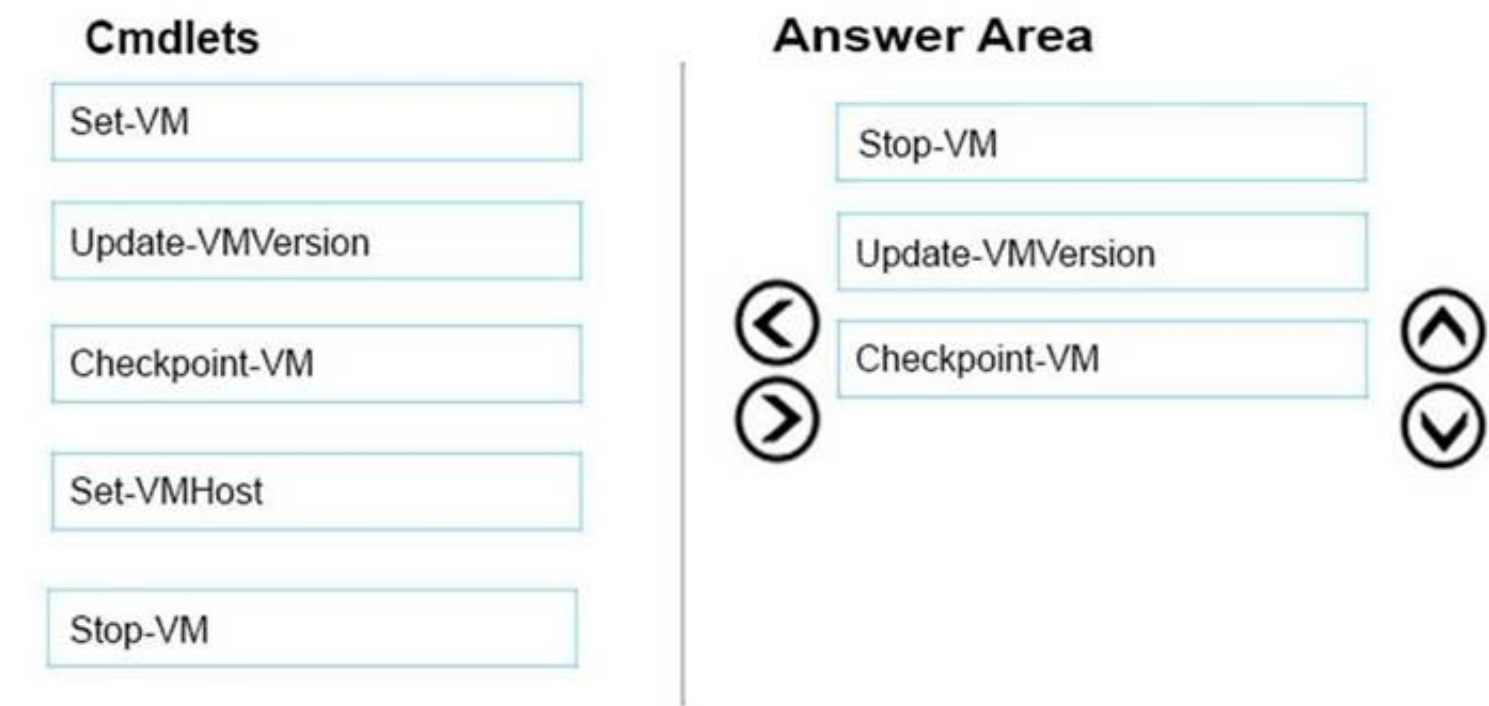
↑

↓

- A. Mastered
- B. Not Mastered

Answer: A

Explanation:



#### NEW QUESTION 147

You have a Hyper-V host named Server1 that runs Windows Server 2016. Server1 contains four virtual machines that are configured as shown in the following table.

Virtual machine name	Configuration
VM1	A shielded virtual machine that runs Windows Server 2012 R2
VM2	A shielded virtual machine that runs Windows Server 2016
VM3	A virtual machine that runs Windows Server 2012 R2 and has Secure Boot enabled
VM4	A virtual machine that runs Windows Server 2016 and has all of its drivers protected by using BitLocker Drive Encryption (BitLocker)

To which machine or machines can you connect by using Virtual Machine Connection from Hyper-V Manager?

- A. VM1, VM2, VM3 and VM4
- B. VM4 only
- C. VM1 and VM2 only
- D. VM3 and VM4 only
- E. VM2 only

**Answer: D**

#### NEW QUESTION 149

After you answer a question in this section, you will NOT be able to return to it. As a result, these questions will not appear in the review screen.

You have a server named Server1 that runs Windows Server 2016.

You plan to use Windows Server Backup to back up all of the data on Server1. You create a new volume on Server1.

You need to ensure that the new volume can be used as a backup target. The backup target must support incremental backups.

Solution: You mount the volume to C:\Backup, and you format the volume by using NTFS. Does this meet the goal?

- A. Yes
- B. No

**Answer: A**

#### NEW QUESTION 152

Your network contains an Active Directory domain. The domain contains a new file server named

Server1 that runs a Server Core installation of Windows Server 2016.

Server1 has an ReFS-formatted volume D: and NTFS-formatted volume E: The volumes do not contain any data.

You install the Data Deduplication role service on Server1.

You need to implement Data Deduplication for volumes on D: and E:.

Solution: From Windows PowerShell, you run Format-Volume D: -FileSystem EXFat and Enable- DeDupVolume -Volume D:,E:.

Does this meet the goal?

- A. Yes
- B. No

**Answer: A**

#### NEW QUESTION 157

HOTSPOT

You have a Hyper-V host named Server1 that runs Windows Server 2016. Server1 has a virtual disk file named Disk1.vhdx that contains an installation of



Windows Server 2016.

You create a virtual disk file named Disk2.vhdx that is configured as shown in the following exhibit.

```

>_ Administrator: Windows PowerShell

PS C:\> Get-VHD -Path C:\Folder1\Disk2.vhdx

ComputerName      : SERVER1
Path              : c:\folder1\disk2.vhdx
VhdFormat         : VHDX
VhdType           : Differencing
FileSize          : 4194304
Size              : 107374182400
MinimumSize       :
LogicalSelectorSize : 512
PhysicalSelectorSize : 4096
BlockSize         : 2097152
ParentPath        : C:\Folder1\Disk1.vhdx
DiskIdentifier     : 6D447006-DE3B-470A-838A-25B064ABEF39
FragmentationPercentage :
Alignment         : 1
Attached          : False
DiskNumber        :
Number            :

PS C:\>
  
```

Use the drop-down menus to select the answer choice that completes each statement based on the information presented in the graphic.

### Answer Area

When you move Disk1.vhdx to C:\Folder2, you will be able to use Disk2.vhdx only after you run [answer choice].

▼
Merge-VHD
Optimize-VHD
Optimize-VHDSets
Set-VHD
Test-VHD

Before you can copy files directly into Disk2.vhdx, you must first run [answer choice].

▼
Merge-VHD
Mount-VHD
Optimize-VHD
Resize-VHD
Set-VHD

- A. Mastered
- B. Not Mastered

**Answer:** A

Explanation:

### Answer Area

When you move Disk1.vhdx to C:\Folder2, you will be able to use Disk2.vhdx only after you run [answer choice].

▼
Merge-VHD
Optimize-VHD
Optimize-VHDSets
Set-VHD
Test-VHD

Before you can copy files directly into Disk2.vhdx, you must first run [answer choice].

▼
Merge-VHD
Mount-VHD
Optimize-VHD
Resize-VHD
Set-VHD

#### NEW QUESTION 161

You have a Nano Server that runs Windows Server 2016. The Nano Server runs on a physical machine. You have not installed any packages on the server. You attach a new disk to the server, and you initialize the disk as a GPT disk. You need to create an RefS-formatted volume on the new disk. What should you do first?

- A. From the physical server, log on to the Nano Server Recovery Console.
- B. Install the Microsoft-NanoServer-Host-Package package.
- C. Run the Format-Volume cmdlet and specify the -FileSystem switch.
- D. Install the Microsoft NanoServer-Storage-Package package.

Answer: C

#### NEW QUESTION 162

You have a server named Server1 that runs Windows Server 2016. The disks on Server1 are configured as shown in the following table.

Volume	Type	File System	Capacity
C:	Attached locally	NTFS	150 GB
D:	Attached locally	exFAT	100 GB
E:	Attached locally	NTFS	20 GB
F:	Attached locally	ReFS	1 TB
G:	iSCSI LUN	NTFS	2 TB

Windows Server 2016 is installed in C:\Windows. On which two volumes can you enable data deduplication? Each correct answer presents a complete solution.

- A. C:
- B. D:
- C. E:
- D. F:
- E. G:

Answer: CE

#### NEW QUESTION 165

Your network contains an Active Directory domain named contoso.com. The domain contains two servers, Server1 and Server2 that run Windows Server 2016. Each server has an operating system disk and four data disks. All of the disks are locally attached SATA disks. Data disk1 is initialized as an MBR disk, and has a single NTFS volume. You plan to implement Storage Spaces Direct by using the data disks on Server1 and Server2. You need to prepare the data disks for the Storage Spaces Direct implementation. What should you do?



- A. Convert the data disks to dynamic disks.
- B. Format the volumes on the data disks as exFAT.
- C. Initialize the data disks as GPT disks and create an ReFS volume on each disk.
- D. Delete the volumes from the data disks.

Answer: D

NEW QUESTION 167

HOTSPOT

You have a server named Server1 that runs Windows Server 2016. Server1 is a Hyper-V host. You run the commands shown in the following graphic:



```

Windows PowerShell
Copyright (C) 2016 Microsoft Corporation. All rights reserved.

PS C:\Users\ServerAdmin> New-VmSwitch -Name TEAM1 -NetAdapterName "NIC 1", "NIC 2" -EnableEmbeddedTeaming $true
PS C:\Users\ServerAdmin> Set-VmSwitch -Name TEAM1 -NetAdapterName "NIC 1"
    
```

Use the drop-down menus to select the answer choice that completes each statement based on the information presented in the graphic.

# Answer Area

After running the commands, TEAM1 contains [answer choice] network adapters.

▼

one

two

three

If you run **Add-VmSwitchTeamMember -VmSwitchName TEAM1 -NetAdapterName "NIC4"**, TEAM1 will contain [answer choice] network adapters.

▼

one

two

three

four

- A. Mastered
- B. Not Mastered

Answer: A

Explanation:

# Answer Area

After running the commands, TEAM1 contains [answer choice] network adapters.

▼

one

two

three

If you run **Add-VmSwitchTeamMember -VmSwitchName TEAM1 -NetAdapterName "NIC4"**, TEAM1 will contain [answer choice] network adapters.

▼

one

two

three

four

NEW QUESTION 170

Note: This question is part of a series of questions that use the same or similar answer choices. An answer choice may be correct for more than one question in

the series. Each question is independent of the other questions in this series. Information and details provided in a question apply only to that question. You have two servers named Server1 and Server2 that run Windows Server 2016. Server1 and Server2 have the Hyper-V server role installed and are nodes in a failover cluster. On Server1, an administrator creates a virtual machine named VM1. You need to configure VM1 for high availability. Which tool should you use?

- A. the clussvc.exe command
- B. the cluster.exe command
- C. the Computer Management snap-in
- D. the configurehyperv.exe command
- E. the Disk Management snap-in
- F. the Failover Cluster Manager snap-in
- G. the Hyper-V Manager snap-in
- H. the Server Manager app

**Answer:** F

**Explanation:**

References:

<http://windowsitpro.com/hyper-v/make-vm-highly-available-windows-server-2012>

**NEW QUESTION 175**

Note: This question is part of a series of questions that use the same or similar answer choices. An answer choice may be correct for more than one question in the series. Each question is independent of the other questions in this series. Information and details provided in a question apply only to that question.

You have two servers named Server1 and Server2 that run Windows Server 2016. Server1 and Server2 have the Hyper-V server role installed.

An iSCSI SAN connects to the network.

You create a LUN on the SAN and configure both servers to connect to the iSCSI target.

You create a failover cluster and add Server1 and Server2 to the cluster. You connect both servers to the iSCSI target and format the shared storage.

You need to add the shared storage to the cluster. The solution must ensure that virtual machines running on both nodes can access the shared storage simultaneously.

Which tool should you use?

- A. the clussvc.exe command
- B. the cluster.exe command
- C. the Computer Management snap-in
- D. the configurehyperv.exe command
- E. the Disk Management snap-in
- F. the Failover Cluster Manager snap-in
- G. the Hyper-V Manager snap-in
- H. the Server Manager app

**Answer:** F

**Explanation:**

References:

[https://technet.microsoft.com/en-us/library/jj612868\(v=ws.11\).aspx](https://technet.microsoft.com/en-us/library/jj612868(v=ws.11).aspx)

**NEW QUESTION 177**

HOTSPOT

Your network contains an Active Directory forest named contoso.com. You need to add a new domain named fabrikam.com to the forest.

What command should you run? To answer, select the appropriate options in the answer area.

## Answer Area

<div><div></div><div>Install-ADDSDomain</div><div>Install-ADDSDomainControler</div><div>Install-ADDSTForest</div></div>	-DomainType	<div><div></div><div>TreeDomain</div><div>ChildDomain</div></div>
---	-------------	---

`-InstallDns:$true -NewDomainName fabrikam.com -ParentDomainName contoso.com`

- A. Mastered
- B. Not Mastered

**Answer:** A

**Explanation:**

## Answer Area

<div> <div>▼</div> <div> <div>Install-ADDSDomain</div> <div>Install-ADDSDomainController</div> <div>Install-ADDSDForest</div> </div> </div>	-DomainType	<div> <div>▼</div> <div> <div>TreeDomain</div> <div>ChildDomain</div> </div> </div>
---	-------------	---

```
-InstallDns:Strue -NewDomainName fabrikam.com -ParentDomainName contoso.com
```

Explanation:

References:

[https://technet.microsoft.com/en-us/library/hh974722\(v=wps.630\).aspx](https://technet.microsoft.com/en-us/library/hh974722(v=wps.630).aspx)

### NEW QUESTION 182

HOTSPOT

You have a DNS server named Server1.

The forwarders are configured as shown in the Forwarders exhibit. (Click the Exhibit button.)

**SERVER1 Properties**

Debug Logging | Event Logging | Monitoring | Security

Interfaces | **Forwarders** | Advanced | Root Hints

Forwarders are not available because this server does not use recursion.

IP Address	Server FQDN
168.63.129.16	<Unable to resolve>

☒ Use root hints if no forwarders are available Edit...

Note: If conditional forwarders are defined for a given domain, they will be used instead of server-level forwarders. To create or view conditional forwarders, navigate to the Conditional Forwarders node in the scope tree.

OK Cancel Apply Help

The Advanced Settings are configured as shown in the Advanced exhibit. (Click the Exhibit button.)



SERVER1 Properties

Debug Logging    Event Logging    Monitoring    Security  
 Interfaces    Forwarders    **Advanced**    Root Hints

Server version number:  
 10.0 14300 (0x37dc)

Server options:

- ☒ Disable recursion (also disables forwarders)
- ☐ Enable BIND secondaries
- ☐ Fail on load if bad zone data
- ☒ **Enable round robin**
- ☒ Enable netmask ordering
- ☒ Secure cache against pollution

Name checking:    Multibyte (UTF8)    v

Load zone data on startup:    From Active Directory and registry    v

☐ Enable automatic scavenging of stale records

Scavenging period:    0    days    v

Reset to Default

OK    Cancel    Apply    Help

The Root Hints are configured as shown in the Root Hints exhibit. (Click the Exhibit button.)

SERVER1 Properties

Debug Logging    Event Logging    Monitoring    Security  
 Interfaces    Forwarders    Advanced    **Root Hints**

Root hints resolve queries for zones that do not exist on the local DNS server. They are only used if forwarders are not configured or fail to respond.

Name servers:

Server Fully Qualified Domain Name (FQDN)	IP Address
a.root-servers.net.	[2001:503:ba3e::2...
b.root-servers.net.	[2001:500:84:b]
f.root-servers.net.	[2001:500:2f:f]
i.root-servers.net.	[2001:7fe::53]
l.root-servers.net.	[2001:500:9f::42]
m.root-servers.net.	[2001:dc3::35]

Add...    Edit...    Remove    Copy from Server

OK    Cancel    Apply    Help

Server1 does not contain any DNS zones.  
 For each of the following statements, select Yes if the statement is true. Otherwise, select No.



## Answer Area

Statements	Yes	No
Server1 can resolve the names of hosts that are located on the Internet.	<input type="radio"/>	<input type="radio"/>
From Server1 Properties, if you perform a test from the Monitoring tab, the recursive test will pass.	<input type="radio"/>	<input type="radio"/>
Server1 is configured as a root DNS server.	<input type="radio"/>	<input type="radio"/>

- A. Mastered  
 B. Not Mastered

**Answer:** A

**Explanation:**

Recursion is disabled so internet hosts cannot be resolved. The recursive test fails because recursion is disabled. Server1 is not configured as a root server. The forwarders list would be greyed out if it was.

### NEW QUESTION 183

#### HOTSPOT

Your network contains an Active Directory forest. The forest contains one domain named contoso.com. The domain contains two domain controllers named DC1 and DC2. DC1 holds all of the operations master roles.

During normal network operations, you run the following commands on DC2:

```
Move-ADDirectoryServerOperationMasterRole -Identity "DC2" - OperationMasterRole PDCEmulator
```

```
Move-ADDirectoryServerOperationMasterRole -Identity "DC2" - OperationMasterRole RIDMaster
```

DC1 fails.

You remove DC1 from the network, and then you run the following command:

```
Move-ADDirectoryServerOperationMasterRole -Identity "DC2" - OperationMasterRole SchemaMaster
```

For each of the following statements, select Yes if the statement if true. Otherwise, select No.

## Answer Area

Statements	Yes	No
DC2 holds the schema master operations role.	<input type="radio"/>	<input type="radio"/>
DC2 holds the PDC emulator master operations role.	<input type="radio"/>	<input type="radio"/>
Currently, you can add additional domains to the forest.	<input type="radio"/>	<input type="radio"/>

- A. Mastered  
 B. Not Mastered

**Answer:** A

**Explanation:**

## Answer Area

Statements	Yes	No
DC2 holds the schema master operations role.	<input type="radio"/>	<input checked="" type="radio"/>
DC2 holds the PDC emulator master operations role.	<input checked="" type="radio"/>	<input type="radio"/>
Currently, you can add additional domains to the forest.	<input type="radio"/>	<input checked="" type="radio"/>

### NEW QUESTION 184

Note: This question is part of a series of questions that present the same scenario. Each question in the series contains a unique solution that might meet the stated goals. Some question sets might have more than one correct solution, while others might not have a correct solution.

After your answer a question in this section, you will NOT be able to return to it. As a result, these questions will not appear in the review screen.

Your network contains an Active Directory forest named contoso.com. You need to identify which server is the schema master.

Solution: From Windows PowerShell, you run Get-ADDomainController -Discover -Service 2. Does this meet the goal?

- A. Yes
- B. No

**Answer:** B

#### Explanation:

References:

<https://blogs.technet.microsoft.com/mempson/2007/11/08/how-to-find-out-who-has-your-fsmo-roles/>

### NEW QUESTION 186

Note: This question is part of a series of questions that present the same scenario. Each question in the series contains a unique solution that might meet the stated goals. Some question sets might have more than one correct solution, while others might not have a correct solution.

After you answer a question in this section, you will NOT be able to return to it. As a result, these questions will not appear in the review screen.

Your network contains an Active Directory forest named contoso.com. You need to identify which server is the schema master.

Solution: You open Active Directory Users and Computers, right-click contoso.com in the console tree, and then click Operations Master.

Does this meet the goal?

- A. Yes
- B. No

**Answer:** B

#### Explanation:

This solution only shows the domain FSMO roles, not the forest FSMO roles.

References: <https://blogs.technet.microsoft.com/mempson/2007/11/08/how-to-find-out-who-has-your-fsmo-roles/>

### NEW QUESTION 191

Note: This question is part of a series of questions that present the same scenario. Each question in the series contains a unique solution that might meet the stated goals. Some question sets might have more than one correct solution, while others might not have a correct solution.

After your answer a question in this section, you will NOT be able to return to it. As a result, these questions will not appear in the review screen.

Your network contains an Active Directory forest named contoso.com. You need to identify which server is the schema master.

Solution: From a command prompt, you run netdom query fsmo. Does this meet the goal?

- A. Yes
- B. No

**Answer:** A

#### Explanation:

References: <https://blogs.technet.microsoft.com/mempson/2007/11/08/how-to-find-out-who-has-your-fsmo-roles/>

### NEW QUESTION 196

Your Network contains one Active Directory domain named contoso.com. You pilot DirectAccess on the network.

During the pilot deployment, you enable DirectAccess only for a group Contoso\Test Computers. Once the pilot is complete, you need to enable DirectAccess for all the client computers in the domain.

What should you do?

- A. From Windows PowerShell, run the Set-DAClient cmdlet.
- B. From Windows PowerShell, run the Set-DirectAccess cmdlet.
- C. From Active Directory Users and Computers, modify the membership of the Windows Authorization Access Group.
- D. From Group Policy Management, modify the security filtering of an object named Direct Access Client Setting Group Policy.

**Answer:** D

#### NEW QUESTION 201

You have two servers named Server1 and Server2. A firewall exists between Server1 and Server2. Both servers run Windows Server Update Services (WSUS). Server1 downloads updates from Microsoft update. Server2 must synchronize updates from Server1. Which port should to open on the firewall?

- A. 80
- B. 443
- C. 3389
- D. 8530

**Answer:** D

#### NEW QUESTION 205

Active Directory Recycle Bin is enabled. You discover that a support technician accidentally removed 100 users from an Active Directory group named Group1 an hour ago. You need to restore the membership of Group1. What should you do?

- A. Perform tombstone reanimation.
- B. Export and import data by using Dsain.
- C. Perform a non-authoritative restore.
- D. Recover the items by using Active Directory Recycle Bin.

**Answer:** B

#### Explanation:

A group has been modified. Nothing has been deleted. Therefore, answers A and D will not work. Answer C would work if it was an authoritative restore, but not a non-authoritative restore.

The solution is to recover an earlier copy of the group from a backup or active directory snapshot by using DSadmin.

#### NEW QUESTION 206

You have a server named Server1 that runs Windows Server 2016 and is configured as a domain controller.

You install the DNS Server server role on Server1.

You plan to store a DNS zone in a custom Active Directory partition. You need to create a new Active Directory partition for the zone. What should you use?

- A. Set-DnsServer
- B. Active Directory Sites and Services
- C. Dns.exe
- D. Dnscmd.exe

**Answer:** D

#### Explanation:

[https://technet.microsoft.com/en-us/library/ee649181\(v=ws.10\).aspx](https://technet.microsoft.com/en-us/library/ee649181(v=ws.10).aspx)

#### NEW QUESTION 211

##### HOTSPOT

Your network contains an Active Directory domain named contoso.com. The domain contains three servers named Server1, Server2, and Server3 that run Windows Server 2016.

Server1 has IP Address Management (IPAM) installed. Server2 and Server3 have the DHCP Server role installed and have several DHCP scopes configured. The IPAM server retrieves data from Server2 and Server3.

A domain user named User1 is a member of the groups shown in the following table.

Server name	Group
Server2	DHCP Administrators
Server3	DHCP Users

On Server1, you create a security policy for User1. The policy grants the IPAM DHCP Scope Administrator Role with the \Global access scope to the user. Which actions can User1 perform? To answer, select the appropriate options in the answer area.



# Answer Area

From Server Manager on Server1, User1 can modify the description of the DHCP scopes:

On Server2 only  
On Server3 only  
On both Server2 and Server3

From Server Manager on Server1, User1 can create a new DHCP scope:

On Server2 only  
On Server3 only  
On both Server2 and Server3

- A. Mastered
- B. Not Mastered

Answer: A

Explanation:

[https://technet.microsoft.com/en-us/library/dn268500\(v=ws.11\).aspx](https://technet.microsoft.com/en-us/library/dn268500(v=ws.11).aspx)

NEW QUESTION 214

You have a server named Server1 that runs Windows Server 2016. Server1 is a Hyper-V host that hosts a virtual machine named VM1. Server1 has three network adapter cards that are connected to virtual switches named vSwitch1, vSwitch2 and vSwitch3. You configure NIC Teaming on VM1 as shown in the exhibit. (Click the Exhibit button.)

NIC Teaming

New team

Team name:  
VM1 NIC Team

Member adapters:

In Team	Adapter	Speed	State	Reason
<input type="checkbox"/>	Ethernet	10 Gbps		
<input checked="" type="checkbox"/>	Ethernet 2	10 Gbps		
<input checked="" type="checkbox"/>	Ethernet 3	10 Gbps		

Additional properties

Teaming mode:  
Switch Independent

You need to ensure that VM1 will retain access to the network if a physical network adapter card fails on Server1. What should you do?

- A. From Windows PowerShell on VM1, run the Set-VmNetworkAdapterTeamMapping cmdlet.
- B. From Hyper-V Manager on Server1, modify the settings on VM1.
- C. From Windows PowerShell on Server1, run the Set-VmNetworkAdapterFailoverConfiguration cmdlet.
- D. From the properties of the NIC team on VM1, add the adapter named Ethernet to the NIC team.

Answer: D



Explanation:

<https://technet.microsoft.com/en-us/windows-server-docs/networking/technologies/nic-teaming/nic-teaming>

NEW QUESTION 216

You have two servers named Server1 and Server2 that run Windows Server 2016. You plan to implement Storage Replica to replicate the contents of volumes on Server1 to Server2. You need to ensure that the replication traffic between the servers is limited to a maximum of 100 Mbps. Which cmdlet should you run?

- A. Set-NetUDPSetting
- B. New-StorageQosPolicy
- C. Set-SmbBandwidthLimit
- D. Set-NetTCPSetting

Answer: C

NEW QUESTION 217

You deploy two servers that run Windows Server 2016. You install the Failover Clustering feature on both servers. You need to create a workgroup cluster. What should you do?

- A. Configure both of the server to be in a workgroup named Workgrou
- B. Configure the Cluster Service to log on as Network Servic
- C. Run the New-Cluster cmdlet and specify an administrative access point of None.
- D. Create matching local administrative accounts on both of the server
- E. Assign the same primary DNS suffix to both of the server
- F. Run the New-Cluster cmdlet and specify an administrative access point of DNS.
- G. Configure both of the server to be in a workgroup named Workgrou
- H. Configure the Cluster Service to log on as Network Servic
- I. Run the New-Cluster cmdlet and specify an administrative access point of DNS.
- J. Create matching local administrative accounts on both of the server
- K. Assign the same primary DNS suffix to both of the server
- L. Run the New-Cluster cmdlet and specify an administrative access point of None

Answer: B

Explanation:

References:  
<https://rlevchenko.com/2015/09/07/workgroup-and-multi-domain-clusters-in-windows-server-2016/>

NEW QUESTION 220

You have a server named Server1 that runs Windows Server 2016. Server1 has four SCSI disks and a storage pool named Pool1 that contains three disks. You create a virtual disk named Disk 1 that uses a mirrored layout. You create a partition named Partition1 that uses all of the available space on Disk 1. You need to extend Partition1. What should you do first?

- A. From Windows PowerShell, run the Resize-VirtualDisk cmdlet.
- B. From Windows PowerShell, run the Resize-StorageTier cmdlet.
- C. From Windows PowerShell, run the Expand-IscsiVirtualDisk cmdlet.
- D. From Disk Management, modify the properties of Partition1.

Answer: A

NEW QUESTION 222

DRAG DROP  
You have a server named Server1 that runs Windows Server 2016. On Server1 you use the Basic template to create a new Data Collector Set named CollectorSet1. You need to configure data collection for the performance counters. The configuration must support the following requirements:  
Data collection must run on a schedule.  
Data collection must stop if there is less than 1 GB of free disk space.  
What should you modify to meet each requirement? To answer, drag the appropriate settings to the correct requirements. Each setting may be used once, more than once, or not at all. You may need to drag the Split bar between panes or scroll to view content.

Settings to Modify		Answer Area
The Data Manager settings of CollectorSet1	Data collection must run on a schedule:	Setting to modify
The properties of the performance counter data collector	Data collection must stop if there is less than 1 GB of free disk space:	Setting to modify
The properties of CollectorSet1		

- A. Mastered
- B. Not Mastered

**Answer:** A

**Explanation:**

### Settings to Modify

### Answer Area

The Data Manager settings of CollectorSet1

Data collection must run on a schedule:

The properties of CollectorSet1

Data collection must stop if there is less than 1 GB of free disk space:

The properties of the performance counter data collector

### NEW QUESTION 227

Which container type is described below:  
Provides application isolation through process and namespace isolation technology.  
This container shares a kernel with the container host and all containers running on the host.

- A. Hyper-V Container
- B. Windows Server Container

**Answer:** B

### NEW QUESTION 230

You have just finished installing Windows Server 2016 on a new server.  
Your colleague has informed you that its essential that you must activate Windows Server. Which of the following command line tools can be used to Activate Windows Server?

- A. Netdom C:\windows\system32\slmgr.vbs -ato
- B. Netsh C:\windows\system32\slmgr.vbs -ato
- C. Ocsetup C:\windows\system32\slmgr.vbs -ato
- D. Cscript C:\windows\system32\slmgr.vbs -ato

**Answer:** D

**Explanation:**

The correct answer is Cscript C:\windows\system32\slmgr.vbs -ato

### NEW QUESTION 235

With Nano Server some packages are installed directly with their own Windows PowerShell switches (such as -Compute); others you install by passing package names to the -Packages parameter, which you can combine in a comma-separated list.  
You want to add IIS to your Nano Server, which command should you use?

- A. -Compute
- B. -Packages
- C. -Containers
- D. -Storage

**Answer:** B

**Explanation:**

IIS is added by using -Packages Microsoft-NanoServer-IIS-Package.

### NEW QUESTION 239

Nano Server is foundational to the modern datacenter and is useful in two core scenarios: As a private cloud infrastructure it's particularly useful for clustered Hyper-V, clustered storage and core networking services scenarios; or as an application platform it's highly optimized for modern distributed and cloud-based apps which leverage containers and micro service architectures.

Is the following statement TRUE or FALSE?

A local interface with UI support is available for offline management of Nano Servers?

- A. TRUE
- B. FALSE

**Answer:** B

**Explanation:**

A local interface with UI support is NOT available for Nano servers. You must administer them remotely using PowerShell.

#### NEW QUESTION 240

You have decided to install Windows Server 2016 by choosing the Service Core Installation option. If you want to install, configure or uninstall server roles remotely, what tool would you use?

- A. Any of these
- B. Windows PowerShell
- C. Remote Server Administration Tools (RSAT)
- D. Server Manager

**Answer:** A

#### NEW QUESTION 243

When you create a new SET team, you must configure the following team properties: Member adapters and Load balancing mode. Which Load balancing mode ensures that outbound loads are distributed based on a hash of the TCP Ports and IP addresses. This mode also re-balances loads in real time so that a given outbound flow can move back and forth between SET team members.

- A. Dynamic
- B. Hyper-V Port

**Answer:** A

#### NEW QUESTION 247

##### HOTSPOT

You have two servers named Server1 and Server2 that run Windows Server 2016. Server1 hosts two containers named Container1 and Container2. The servers and the containers are configured as shown in the following table.

Name	IP address	IP subnet mask
Server1	10.10.50.20	255.255.255.0
Server2	10.10.50.21	255.255.255.0
Container1	172.16.1.100	255.255.255.0
Container2	172.16.1.101	255.255.255.0

Container1 hosts a website on port 8080.


You create a port mapping between port 8080 on Container1 and port 80 on Server1.

Which URL can you use to access the website from Server1, Server2, and Container2? To answer, select the appropriate options in the answer area.


NOTE: Each correct selection is worth one point.




Answer Area

Server1: 

http://10.10.50.20:80 only
http://10.10.50.20:8080 only
http://172.16.1.100:80 only
http://172.16.1.100:8080 only
http://10.10.50.20:80 and http://172.16.1.100:8080
http://10.10.50.20:8080 and http://172.16.1.100:80

Server2: 

http://10.10.50.20:80 only
http://10.10.50.20:8080 only
http://172.16.1.100:80 only
http://172.16.1.100:8080 only
http://10.10.50.20:80 and http://172.16.1.100:8080
http://10.10.50.20:8080 and http://172.16.1.100:80

Server3: 

http://10.10.50.20:80 only
http://10.10.50.20:8080 only
http://172.16.1.100:80 only
http://172.16.1.100:8080 only
http://10.10.50.20:80 and http://172.16.1.100:8080
http://10.10.50.20:8080 and http://172.16.1.100:80

- A. Mastered
- B. Not Mastered

Answer: A

Explanation:

Answer Area

Server1:

http://10.10.50.20:80 only
http://10.10.50.20:8080 only
http://172.16.1.100:80 only
http://172.16.1.100:8080 only
http://10.10.50.20:80 and http://172.16.1.100:8080
http://10.10.50.20:8080 and http://172.16.1.100:80

Server2:

http://10.10.50.20:80 only
http://10.10.50.20:8080 only
http://172.16.1.100:80 only
http://172.16.1.100:8080 only
http://10.10.50.20:80 and http://172.16.1.100:8080
http://10.10.50.20:8080 and http://172.16.1.100:80

Server3:

http://10.10.50.20:80 only
http://10.10.50.20:8080 only
http://172.16.1.100:80 only
http://172.16.1.100:8080 only
http://10.10.50.20:80 and http://172.16.1.100:8080
http://10.10.50.20:8080 and http://172.16.1.100:80

**NEW QUESTION 248**

You plan to install a Nano Server on a physical server named Nano1. Nano1 will host several virtual machines that will use live migration. Which package should you install on Nano1?

- A. Microsoft-NanoServer-SecureStartup-Package
- B. Microsoft-NanoServer-ShieldedVM-Package
- C. Microsoft-NanoServer-Compute-Package
- D. Microsoft-NanoServer-FailoverCluster-Package
- E. Microsoft-NanoServer-Storage –Package

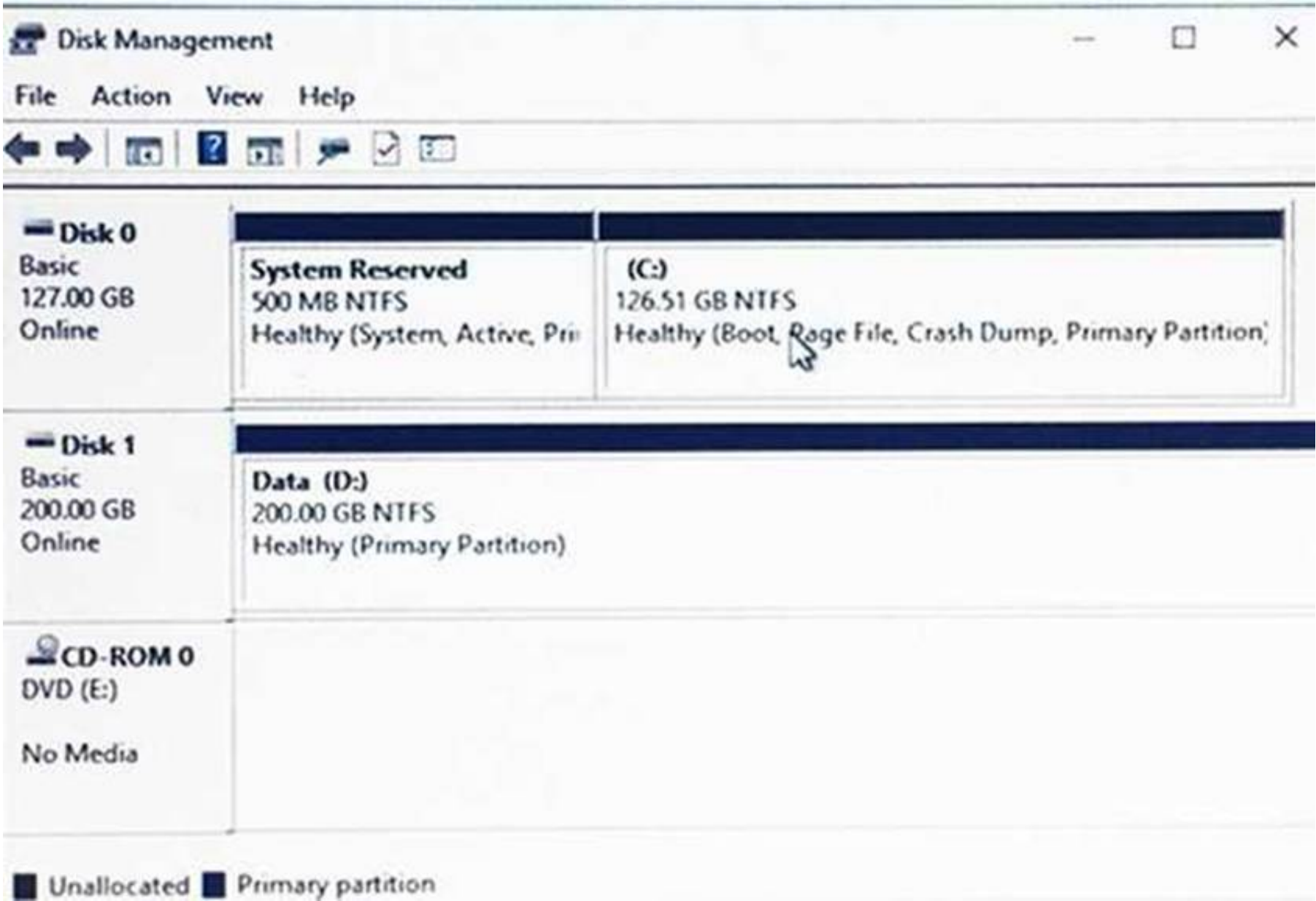
**Answer:** C

**NEW QUESTION 253**

DRAG DROP

You have a Hyper-V host named Server1 that runs Windows Server 2016. Server1 hosts a virtual machine named VM1. VM1 runs Windows Server 2016. VM1 uses a VHD for storage.

The disk configuration of VM1 is shown in the exhibit. (Click the Exhibit button.)



You need to increase the size of volume D to 400 GB.  
Which cmdlets should you run on Server1 and VM1? To answer, drag the appropriate cmdlets to the correct servers. Each cmdlet may be used once, more than once, or not at all. You may need to drag the split bar between panes or scroll to view content.  
NOTE: Each correct selection is worth one point.

Cmdlets

- Resize-Partition
- Resize-VHD
- Resize-VirtualDisk
- Set-VHD
- Set-Volume

Answer Area

Cmdlet to run on Server1:	Cmdlet
Cmdlet to run on VM1:	Cmdlet

- A. Mastered
- B. Not Mastered

Answer: A

Explanation:



Cmdlets	Answer Area
<div>Resize-Partition</div>	<div>Cmdlet to run on Server1: <div>Resize-VHD</div></div>
<div>Resize-VHD</div>	<div>Cmdlet to run on VM1: <div>Resize-Partition</div></div>
<div>Resize-VirtualDisk</div>	
<div>Set-VHD</div>	
<div>Set-Volume</div>	

#### NEW QUESTION 257

You have two servers that run Windows Server 2016. The servers are configured as shown in the following table.

Server name	Workgroup	DNS suffix
Server1	Workgroup1	None
Server2	Workgroup2	Contoso.com

You need to create a failover cluster that contains both servers.

Which two commands should you run? Each correct answer presents part of the solution. NOTE: Each correct selection is worth one point.

- A. wmic ComputerSystem Set Workgroup= "Workgroup2"
- B. New-Cluster-Name Cluster1- Node Server1, Server2- AdministrativeAccessPoint DNS
- C. New-Cluster-Name Cluster1- Node Server1, Server2- AdministrativeAccessPoint ActiveDirectoryAndDns
- D. New-Cluster-Name Cluster1- Node Server1, Server2- AdministrativeAccessPoint None
- E. netdom computername Server1/MakePrimary:server1.contoso.com

**Answer:** AB

#### NEW QUESTION 262

HOTSPOT

You have four servers named Server1, Server2, Server3, and Server4 that run Windows Server 2016. Server1 and Server2 are nodes in a failover cluster named FC1. Server3 and Server4 are nodes in a failover cluster named FC2.

You add the cluster roles shown in the following table.

Role name	Type	Failover cluster	Owner node
FS1(\FS1)	File server	FC1	Server1
FS2(\FS2)	Scale-Out File Server	FC2	Server3

You add a file share named Share1 to FS1. You add a file share named Share2 to FS2.

Which UNC paths can you use to access each share? To answer, select the appropriate options in the answer area.

NOTE: Each correct selection is worth one point.

## Answer Area

UNC path to access Share1:

▼

\\FS1\Share1 only

\\Server1\Share1 only

\\Server2\Share1 only

\\Server1\Share1 and \\Server2\Share1 only

\\Server1\Share1, \\Server2\Share1. and \\FS1\Share1

UNC path to access Share2:

▼

\\FS2\Share2 only

\\Server3\Share2 only

\\Server4\Share2 only

\\Server3\Share2 and \\Server4\Share2 only

\\Server1\Share2, \\Server4\Share2. and \\FS2\Share2

- A. Mastered
- B. Not Mastered

**Answer:** A

**Explanation:**

References:

<https://blogs.technet.microsoft.com/canitpro/2013/12/10/step-by-step-scale-out-file-shares-and-continuously-available-file-services/>  
<https://robertsmit.wordpress.com/2018/02/21/clustering-fileserver-data-deduplication-on-windows-2016-step-by-step-sofs-winserv-refs-windowsserver2016-dedupe/>

### NEW QUESTION 264

You have a server named Server1 that runs Windows Server 2016. Server1 has the Containers feature installed. You create a text file that contains the commands that will be used to automate the creation of new containers. You need to ensure that the commands in the text file are used when you create new containers. What should you name the file?

- A. Bootstrap.ini
- B. Config.ini
- C. Dockerfile
- D. Unattend.txt

**Answer:** C

### NEW QUESTION 269

You have a container host named Server1 that runs Windows Server 2016. You need to start a Hyper-V container on Server1. Which parameter should you use with the docker run command?

- A. --runtime
- B. --entrypoint
- C. --privileged
- D. --isolation
- E. --expose

**Answer:** D

**Explanation:**

<https://docs.microsoft.com/en-us/virtualization/windowscontainers/deploy-containers/system-requirements>

### NEW QUESTION 270

You create a Storage Spaces Direct hyper-converged failover cluster. The cluster contains three nodes and a 1-TB Storage Spaces Direct volume. The cluster will store virtual machines. You plan to extend the volume by adding an additional 3 TB. What is the minimum amount of extra disk capacity required to accommodate extending the volume?

- A. 3TB on the coordinator node
- B. 3 TB per node
- C. 4 TB per node
- D. 4 TB on the coordinator node

**Answer:** B

**Explanation:**

References:

<https://docs.microsoft.com/en-us/windows-server/storage/storage-spaces/drive-symmetry-considerations>

**NEW QUESTION 275**

You have a Hyper-V failover cluster that contains three nodes. Virtual machines are distributed evenly across the cluster nodes.

You need to ensure that if a node loses connectivity from the other nodes, the virtual machines on the node will be transitioned to one of the remaining nodes after one minute.

Which settings should you modify?

- A. QuarantineDuration and QuarantineThreshold
- B. SameSubnetDelay and CrossSubnetDelay
- C. QuorumArbitrationTimeMax and RequestReplyTimeout
- D. ResiliencyPeriod and ResiliencyLevel

**Answer:** C

**Explanation:**

References: [https://msdn.microsoft.com/en-us/library/aa369123\(v=vs.85\).aspx](https://msdn.microsoft.com/en-us/library/aa369123(v=vs.85).aspx) [https://msdn.microsoft.com/en-us/library/bb394696\(v=vs.85\).aspx](https://msdn.microsoft.com/en-us/library/bb394696(v=vs.85).aspx)

**NEW QUESTION 278**

You have a server named Server1 that runs Windows Server 2016.

On Server1, you use the Basic template to create a new Data Collector Set named CollectorSet1. You need to configure CollectorSet1 to generate performance alerts.

What should you do before you start CollectorSet1?

- A. Modify the performance counter data collector of CollectorSet1.
- B. Add a new data collector to CollectorSet1.
- C. Modify the configuration data collector of CollectorSet1.
- D. Add a new task to CollectorSet1.

**Answer:** A

**Explanation:**

[https://technet.microsoft.com/en-us/library/cc722414\(v=ws.11\).aspx](https://technet.microsoft.com/en-us/library/cc722414(v=ws.11).aspx)

**NEW QUESTION 283**

You have a server named Server1 that runs Windows Server 2016. Server1 is a member of contoso.com. Server1 has the Hyper-V role installed. Virtual machines on Server1 are connected to an external switch named Switch1.

You create a virtual machine named VM1 on Server1 by running the following cmdlets.

```
Add-VM VM1
Add-VMHardDiskDrive -VMName VM1 -ControllerType IDE -Path c:\VMs\Disk1.vhd
Add-VMNetworkAdapter -VMName VM1
```

You need to ensure that you can install the operating system on VM1 by using Windows Deployment Services.

What should you do?

- A. Modify the SwitchType parameter of Switch1.
- B. Modify the DefaultFlowMinimumBandwidthWeight parameter of Switch1.
- C. Add a SCSI controller to VM1.
- D. Add a legacy network adapter to VM1.

**Answer:** D

**NEW QUESTION 284**

Note: This question is part of a series of questions that present the same scenario. Each question in the series contains a unique solution that might meet the stated goals. Some question sets might

have more than one correct solution, while others might not have a correct solution. Your network contains an Active Directory forest

You install Windows Server 2016 on 10 virtual machines.

You need to deploy the Web Server (IIS) server role identically to the virtual machines.

Solution: From Windows System Image Manager, you create an answer file, you copy the file to C:\Sysprep on each virtual machine, and then you run the Apply-Image cmdlet.

Does this meet the goal?

- A. Yes
- B. No

**Answer:** B

**NEW QUESTION 286**

Note: This question is part of a series of questions that present the same scenario. Each question in

the series contains a unique solution that might meet the stated goals. Some question sets might have more than one correct solution, while others might not have a correct solution.



You have a server named Server1 that runs Windows Server 2016. Server1 hosts a line-of-business application named App1. App1 has a memory leak that occasionally causes the application to consume an excessive amount of memory.

You need to log an event in the Application event log whenever App1 consume more than 4 GB of memory.

Solution: You create a performance counter data collector. Does this meet the goal?

- A. Yes
- B. No

**Answer:** B

#### NEW QUESTION 287

You have two Hyper-V hosts named Server1 and Server2 that run Windows Server 2016. Server1

hosts a virtual machine named VM1 that is in a Running state.

On Server1, you export VM1 and then you import VM1 on Server2. What is the current state of VM1 on Server2?

- A. Off
- B. Running
- C. Paused
- D. Saved

**Answer:** B

#### NEW QUESTION 291

You have three Hyper-V hosts named Server1, Server2, and Server3 that run Windows Server 2016. The servers are nodes in a failover cluster.

The failover cluster contains two virtual machines named VM1 and VM2. The roles for VM1 and VM2 have the following configurations.

```
PS C:\> Get-ClusterGroup vm1,vm2 | fl *
```

```
AntiAffinityClassNames      : {}
AutoFailbackType            : 0
ColdStartSetting            : 0
Cluster                     : Cluster1
DefaultOwner                : 1
Description                  :
GroupType                   : VirtualMachine
FailoverPeriod              : 6
FailoverThreshold           : 4294967295
FailbackWindowEnd           : 4294967295
FailbackWindowStart         : 4294967295
IsCoreGroup                 : False
Name                        : vm1
OwnerNode                   : Server1
PersistentState              : 1
PreferredSite                : {}
Priority                     : 0
ReliliencyPeriod            : 429467295
State                       : Online
StatusInformation           : 0
Id                          : d02c87d1-8alc-4ffb-b87d-adf059416f25
```

```
AntiAffinityClassNames      : {}
AutoFailbackType            : 0
ColdStartSetting            : 0
Cluster                     : Cluster1
DefaultOwner                : 1
Description                  :
GroupType                   : VirtualMachine
FailoverPeriod              : 6
FailoverThreshold           : 4294967295
FailbackWindowEnd           : 4294967295
FailbackWindowStart         : 4294967295
IsCoreGroup                 : False
Name                        : vm2
OwnerNode                   : Server1
PersistentState              : 1
PreferredSite                : {}
Priority                     : 3000
ResiliencyPeriod            : 4294967295
State                       : Online
StatusInformation           : 0
Id                          : ab38e657-bfcf-463d-a88b-d4e99aff4ef1
```

All of the nodes in the failover cluster have sufficient resources to run VM1 and VM2 concurrently. VM1 and VM2 fail over to Server3. What is the state of each virtual machine after the failover?

- A. Both VM1 and VM2 are stopped.
- B. Both VM1 and VM2 are running.
- C. VM1 is stopped and VM2 is running.
- D. VM1 is stopped and VM2 is paused.

**Answer:** C

**Explanation:**

References:

[https://msdn.microsoft.com/en-us/library/jj151956\(v=vs.85\).aspx](https://msdn.microsoft.com/en-us/library/jj151956(v=vs.85).aspx)

**NEW QUESTION 292**

Note: This question is part of a series of questions that use the same or similar answer choices. An answer choice may be correct for more than one question in the series. Each question is independent of the other questions in this series. Information and details provided in a question apply only to that question.

You have a Hyper-V host named Server1 that runs Windows Server 2016. Server1 has a virtual machine that uses a virtual hard disk (VHD) named disk1.vhdx. You receive the following warning message from Event Viewer: "One or more virtual hard disks have a physical sector size that is smaller than the physical sector size of the storage on which the virtual hard disk file is located."

You need to resolve the problem that causes the warning message. What should you run?

- A. the Mount-VHD cmdlet
- B. the Diskpart command
- C. the Set-VHD cmdlet
- D. the Set-VM cmdlet
- E. the Set-VMHost cmdlet
- F. the Set-VMProcessor cmdlet
- G. the Install-WindowsFeature cmdlet
- H. the Optimize-VHD cmdlet

**Answer:** C

**Explanation:**

References:

[https://technet.microsoft.com/en-us/library/hh848561\(v=wps.630\).aspx](https://technet.microsoft.com/en-us/library/hh848561(v=wps.630).aspx)

**NEW QUESTION 294**

You have two servers named Server1 and Server2 that run Windows Server 2016. Server1 contains a volume named Volume1. You implement a Storage Replica that replicates the contents of Volume1 from Server1 to Server2. Server1 fails. From Server2, you need to ensure that you can access the contents of Volume1. What should you run?

- A. Update-StoragePool
- B. Set-SRPartnership
- C. vssadmin revert shadow
- D. Clear-FileStorageTier

**Answer:** B

**Explanation:**

References:

<https://docs.microsoft.com/en-us/windows-server/storage/storage-replica/server-to-server-storage-replication>

**NEW QUESTION 297**

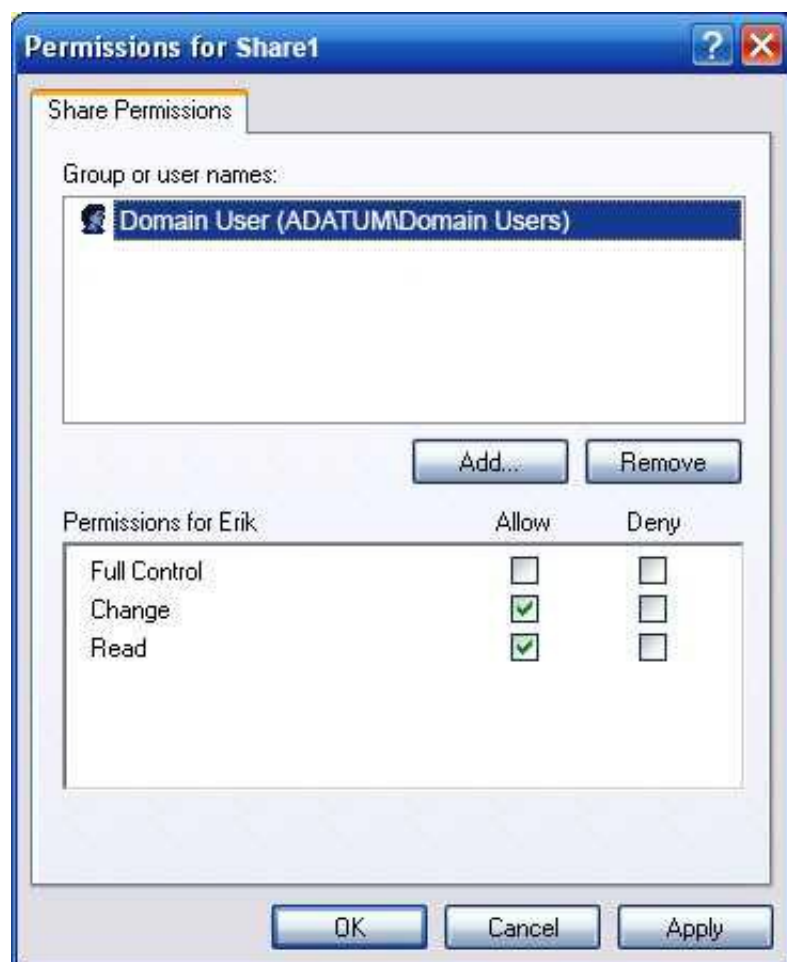
**HOTSPOT**

Your network contains an Active Directory domain named Adatum.com. The domain contains two servers named Server1 and Server2 that run Windows Server 2016. The domain contains three users named User1, User2, and User3. Server1 has a share named Share1 that has the following configurations.

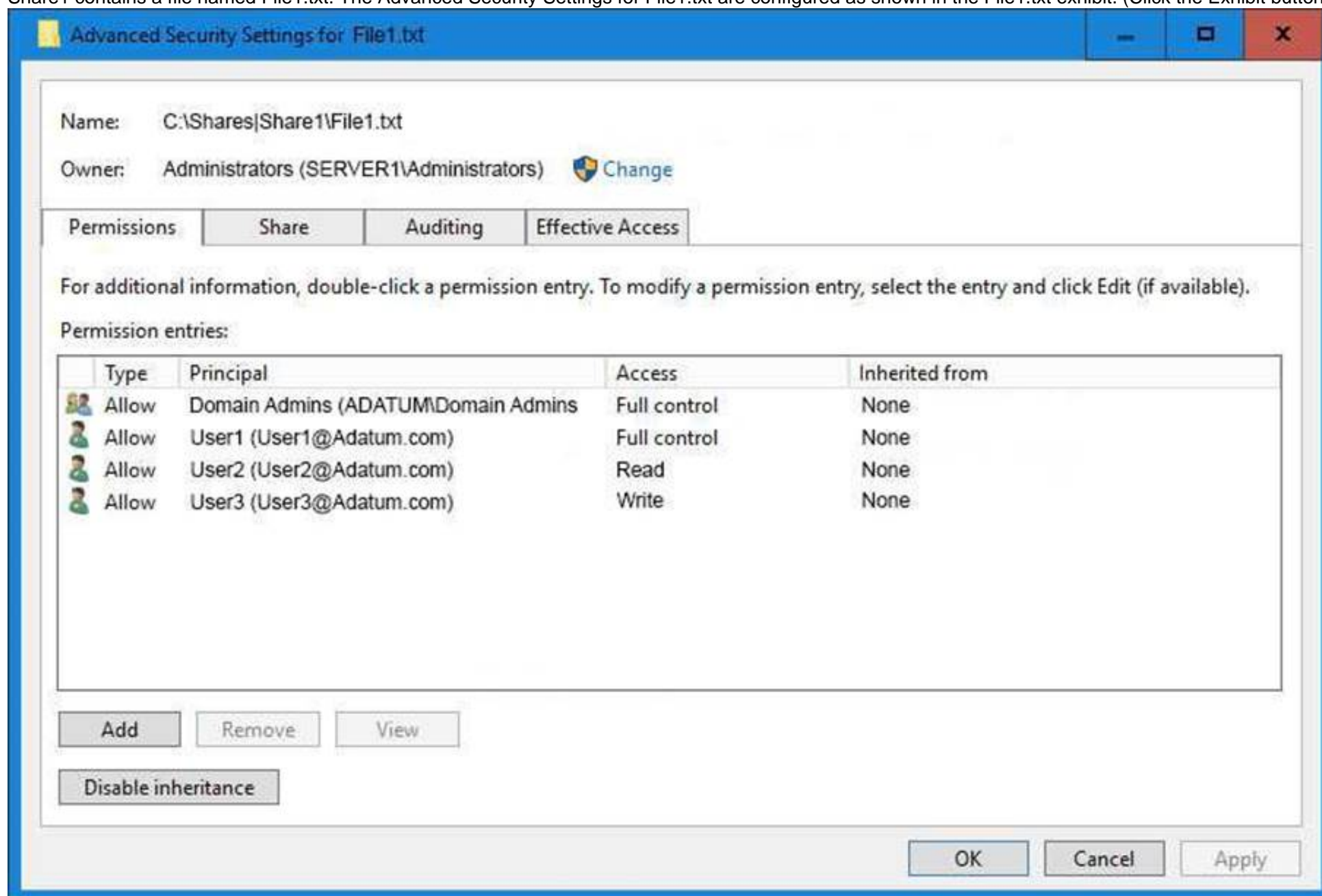
```
PresetPathAcl      : System.Security.AccessControl.DirectorySecurity
ShareState         : Online
AvailabilityType   : NonClustered
ShareType          : FileSystemDirectory
FolderEnumerationMode : AccessBased
CachingMode        : Manual
SmbInstance        : Default
CATimeout          : 0
ConcurrentUserLimit : 0
ContinuouslyAvailable : False
CurrentUsers        : 0
Description        :
EncryptData         : False
Name                : Share1
Path                : C:\Shares\Share1
Scoped              : False
ScopeName           : *
SecurityDescriptor  : O:BAG:DUD:(A;OICI;FA;;;WD)
ShadowCopy          : False
Special             : False
Temporary          : False
Volume              : \\?\Volume{d80578cf-0000-0000-0000-501f00000000}\
PSComputerName      :
CimClass            : ROOT\Microsoft\Windows\SMB:MSFT_SmsShare
CimInstanceProperties : {AvailabilityType, CachingMode, CATimeout, ConcurrentUserLimit...}
CimSystemProperties  : Microsoft.Management.Infrastructure.CimSystemProperties
```

The share permissions for Share1 are configured as shown in the Share1 exhibit. (Click the Exhibit button.)





Share1 contains a file named File1.txt. The Advanced Security Settings for File1.txt are configured as shown in the File1.txt exhibit. (Click the Exhibit button.)



For each of the following statement, select Yes if the statement is true. Otherwise, select No.

## Answer Area

Statement	Yes	No
When User1 navigates to \\Server1\Share1\, the user can take ownership of File1.txt.	<input type="radio"/>	<input type="radio"/>
When User2 navigates to \\Server1\Share1\, the user will see File1.txt	<input type="radio"/>	<input type="radio"/>
When User3 navigates to \\Server1\Share1\, the user will see File1.txt	<input type="radio"/>	<input type="radio"/>

- A. Mastered  
 B. Not Mastered

Answer: A

Explanation:

## Answer Area

Statement	Yes	No
When User1 navigates to \\Server1\Share1\, the user can take ownership of File1.txt.	<input type="radio"/>	<input checked="" type="radio"/>
When User2 navigates to \\Server1\Share1\, the user will see File1.txt	<input checked="" type="radio"/>	<input type="radio"/>
When User3 navigates to \\Server1\Share1\, the user will see File1.txt	<input checked="" type="radio"/>	<input type="radio"/>

### NEW QUESTION 302

You have a server named Server1 that runs Windows Server 2016. The Docker daemon runs on Server1. You need to ensure that members of a security group named Docker Administrators can administer Docker. What should you do?

- A. Run the sc privsc ommand.  
 B. Edit the Daemon.json file.  
 C. Add Docker Administrators to the local Administrators group.  
 D. Edit the Configuration.json file.

Answer: C

### NEW QUESTION 303

You have a Windows container host named Server1. On Server1, you create a container named Container1. You need to mount C:\ContainerFiles from Server1 to Container1. What should you run?

- A. dockerd --storage-opt dm.mountopt=ContainerFiles  
 B. docker run -it -v c:\ContainerFiles Container1  
 C. dockerd --storage-opt dm.datadev=/c/ContainerFiles  
 D. docker run -it -vc:\ContainerFiles:c:\ContainerFiles Container1

Answer: D

### NEW QUESTION 304

#### HOTSPOT

Note: This question is part of a series of questions that use the same scenario. For your convenience, the scenario is repeated in each question. Each question presents a different goal and answer choices, but the text of the scenario is exactly the same in each question in this series.

Your network contains an Active Directory domain named contoso.com. The functional level of the forest and the domain is Windows Server 2008 R2. All servers in the domain run Windows Server 2016 Standard. The domain contains 300 client computers that run either Windows 8.1 or Windows 10. The domain contains nine servers that are configured as shown in the following table.

Name	Configuration	Planned changes
Server1	Domain controller	None
Server2	File server	Run Failover Clustering and Storage Spaces Direct
Server3	File server	Run Failover Clustering and Storage Spaces Direct
Server4	Hyper-V host	Run shielded virtual machines
Server5	Hyper-V host	None
Server6	Member server	Run Active Directory Federation Services (AD FS)
VM1	Virtual machine hosted on Server5	None
VM2	Virtual machine hosted on Server5	None
VM3	Virtual machine hosted on Server5	None

The virtual machines are configured as follows:

Each virtual machine has one virtual network adapter.

VM1 and VM2 are part of a Network Load Balancing (NLB) cluster.

All of the servers on the network can communicate with all of the virtual machines. For VM1 and VM2, you plan to use live migration between Server4 and Server5.

You need to ensure that when the virtual machines migrate, they maintain connectivity to the network.

Which virtual switch names and connection types should you use on each server? To answer, select the appropriate options in the answer area.

## Answer Area

Virtual switch connection type on Server4:

▼

External network

Internal network

Private network

Virtual switch connection type on Server5:

▼

External network

Internal network

Private network

Virtual switch name on Server4:

▼

External on Server4

Network switch

Server4

Virtual switch name on Server5:

▼

External on Server5

Network switch

Server5

- A. Mastered
- B. Not Mastered

**Answer:** A

**Explanation:**



## Answer Area

Virtual switch connection type on Server4:

▼

External network

Internal network

Private network

Virtual switch connection type on Server5:

▼

External network

Internal network

Private network

Virtual switch name on Server4:

▼

External on Server4

Network switch

Server4

Virtual switch name on Server5:

▼

External on Server5

Network switch

Server5

### NEW QUESTION 309

Note: This question is part of a series of questions that present the same scenario. Each question in the series contains a unique solution that might meet the stated goals. Some question sets might have more than one correct solution, while others might not have a correct solution.

After you answer a question in this section, you will NOT be able to return to it. As a result, these questions will not appear in the review screen.

You network contains an Active Directory domain named contoso.com.

You need to create a Nano Server image named Nano1 that will be used as a virtualization host. The Windows Server 2016 source files are located in drive D.

Solution: You run the following cmdlet.

```
New-NanoServerImage -Edition Datacenter -DeploymentType Host -Compute
-MediaPath 'D:\' -TargetPath C:\Nano1\Nano1.wim -ComputerName Nano1
-DomainName Contoso.com
```

Does this meet the goal?

- A. Yes
- B. No

**Answer: A**

### NEW QUESTION 313

Note: This question is part of a series of questions that present the same scenario. Each question in the series contains a unique solution that might meet the stated goals. Some question sets might have more than one correct solution, while others might not have a correct solution.

After you answer a question in this section, you will NOT be able to return to it. As a result, these questions will not appear in the review screen.

You network contains an Active Directory domain named contoso.com.

You need to create a Nano Server image named Nano1 that will be used as a virtualization host. The Windows Server 2016 source files are located in drive D.

Solution: You run the following cmdlet.

```
New-NanoServerImage -Edition Datacenter -DeploymentType Host -Package
Microsoft-NanoServer-SCVMM-Package -MediaPath 'D:\' -TargetPath
C:\Nano1\Nano1.wim -ComputerName Nano1 -DomainName Contoso.com
```

Does this meet the goal?

- A. Yes
- B. No

**Answer: B**

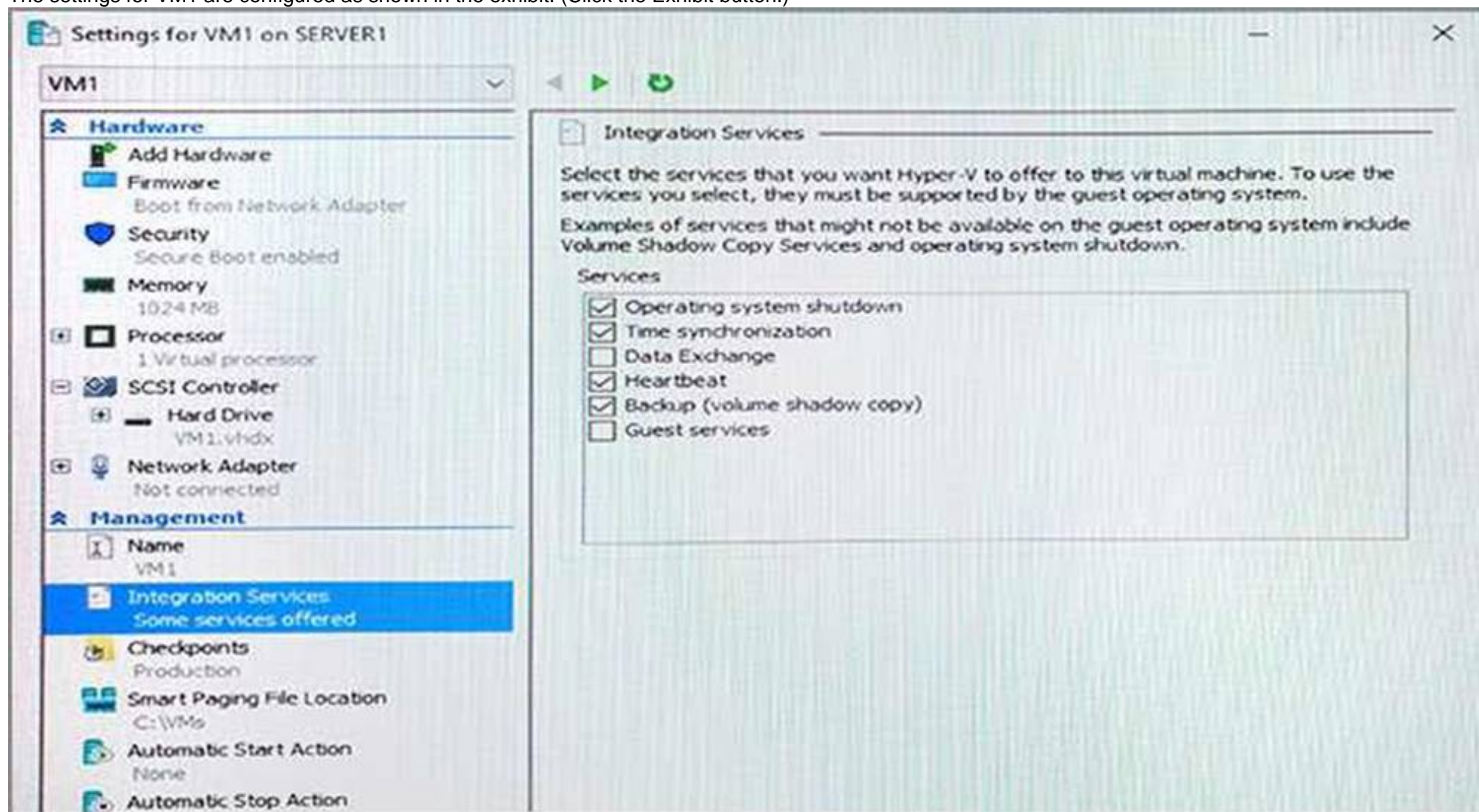
### NEW QUESTION 317

Note: This question is part of a series of questions that present the same scenario. Each question in the series contains a unique solution that might meet the stated goals. Some question sets might have more than one correct solution, while others might not have a correct solution.

After you answer a question in this section, you will NOT be able to return to it. As a result, these questions will not appear in the review screen.

You have a Hyper-V host named Server1 that hosts a virtual machine named VM1. Server1 and VM1 run Windows Server 2016.

The settings for VM1 are configured as shown in the exhibit. (Click the Exhibit button.)



You need to ensure that you can use the Copy-VMFile cmdlet on Server1 to copy files from VM1. Solution: You enable the Data Exchange integration service for VM1.

Does this meet the goal?

- A. Yes
- B. No

**Answer: B**

#### Explanation:

References:

[https://technet.microsoft.com/en-us/library/dn798297\(v=ws.11\).aspx](https://technet.microsoft.com/en-us/library/dn798297(v=ws.11).aspx)

### NEW QUESTION 321

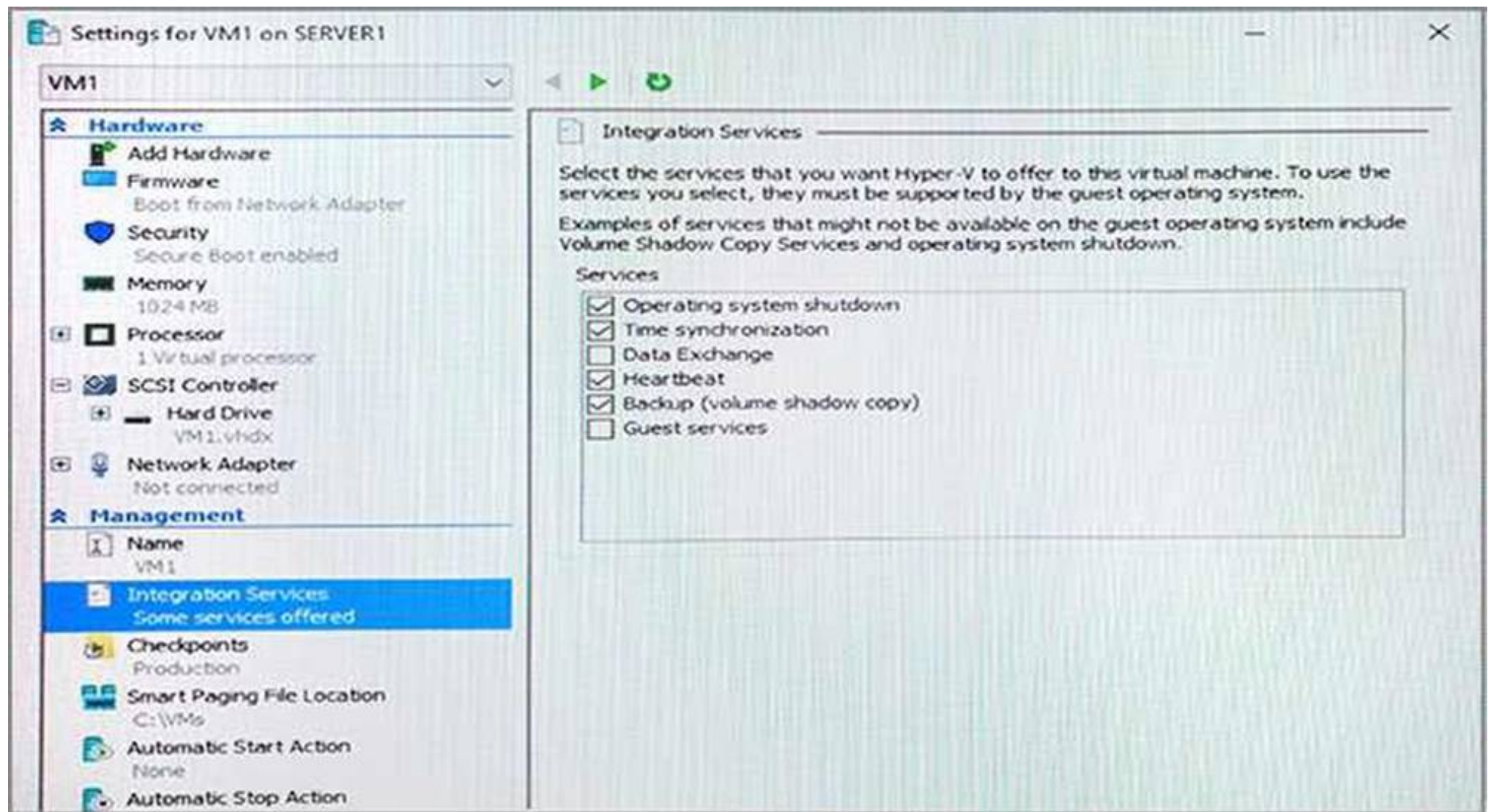
Note: This question is part of a series of questions that present the same scenario. Each question in the series contains a unique solution that might meet the stated goals. Some question sets might have more than one correct solution, while others might not have a correct solution.

After you answer a question in this section, you will NOT be able to return to it. As a result, these questions will not appear in the review screen.

You have a Hyper-V host named Server1 that hosts a virtual machine named VM1. Server1 and VM1 run Windows Server 2016.

The settings for VM1 are configured as shown in the exhibit. (Click the Exhibit button.)





You need to ensure that you can use the Copy-VMFile cmdlet on Server1 to copy files from VM1. Solution: You connect VM1 to an internal virtual switch. Does this meet the goal?

- A. Yes
- B. No

Answer: B

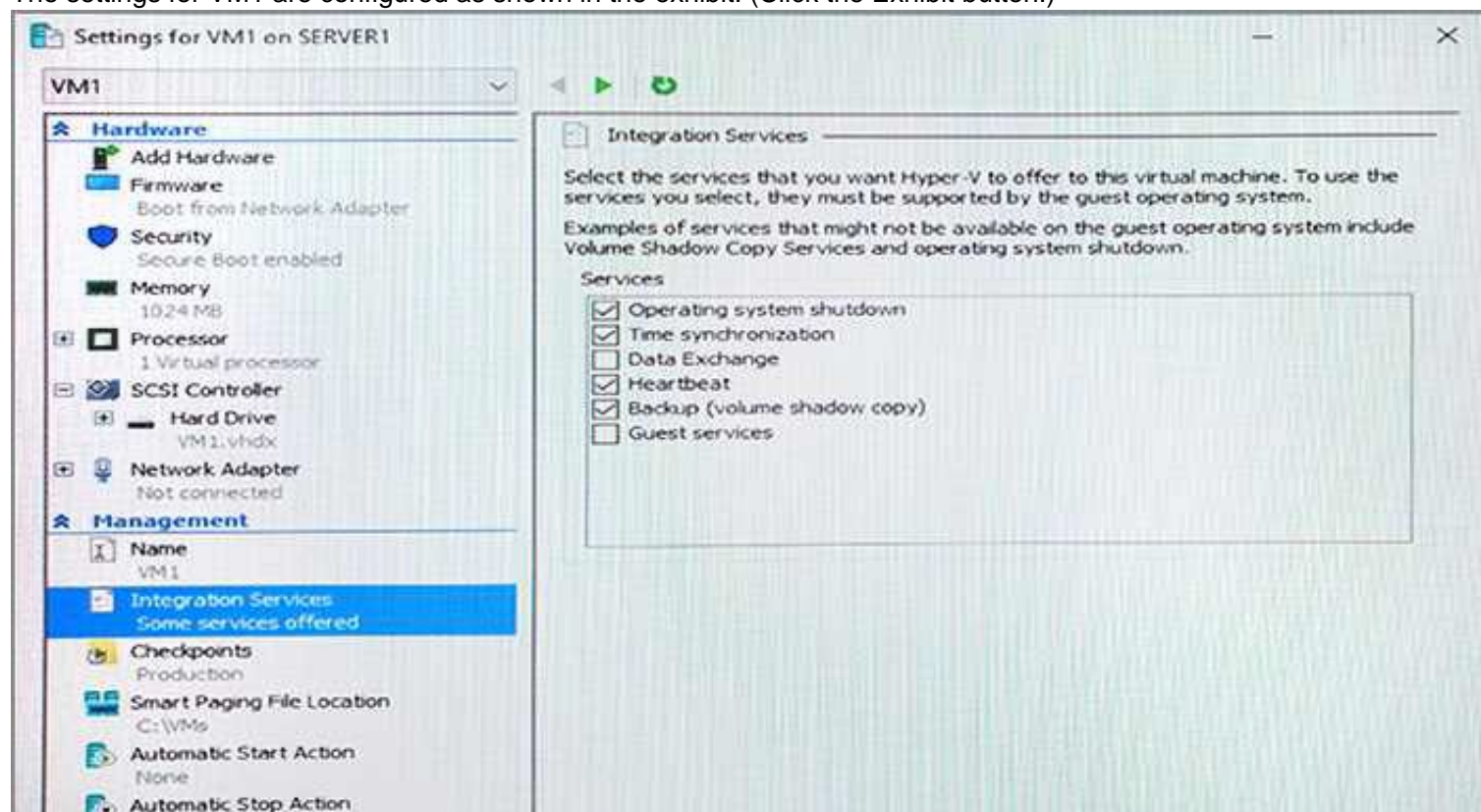
### NEW QUESTION 322

Note: This question is part of a series of questions that present the same scenario. Each question in the series contains a unique solution that might meet the stated goals. Some question sets might have more than one correct solution, while others might not have a correct solution.

After you answer a question in this section, you will NOT be able to return to it. As a result, these questions will not appear in the review screen.

You have a Hyper-V host named Server1 that hosts a virtual machine named VM1. Server1 and VM1 run Windows Server 2016.

The settings for VM1 are configured as shown in the exhibit. (Click the Exhibit button.)



You need to ensure that you can use the Copy-VMFile cmdlet on Server1 to copy files from VM1.

Solution: You start the Hyper-V Guest Service Interface service on VM1. Does this meet the goal?

- A. Yes
- B. No

Answer: A

### Explanation:

References:

[https://technet.microsoft.com/en-us/library/dn798297\(v=ws.11\).aspx](https://technet.microsoft.com/en-us/library/dn798297(v=ws.11).aspx)



#### NEW QUESTION 326

Note: This question is part of a series of questions that present the same scenario. Each question in the series contains a unique solution that might meet the stated goals. Some question sets might have more than one correct solution, while others might not have a correct solution.

After you answer a question in this section, you will NOT be able to return to it. As a result, these questions will not appear in the review screen.

You have a server named Server1 that runs Windows Server 2016.

Server1 hosts a line-of-business application named App1. App1 has a memory leak that occasionally causes the application to consume an excessive amount of memory.

You need to log an event in the Application event log whenever App1 consumes more than 4 GB of memory.

Solution: You create an event trace data collector. Does this meet the goal?

A. Yes

B. No

**Answer: B**

#### NEW QUESTION 331

Note: This question is part of a series of questions that present the same scenario. Each question in the series contains a unique solution that might meet the stated goals. Some question sets might have more than one correct solution, while others might not have a correct solution.

After you answer a question in this section, you will NOT be able to return to it. As a result, these questions will not appear in the review screen.

After you answer a question in this section, you will NOT be able to return to it. As a result, these questions will not appear in the review screen.

Your network contains an Active Directory domain. The domain contains a new file server named Server1 that runs a Server Core installation of Windows Server 2016.

Server1 has an ReFS-formatted volume D: and an NTFS-formatted volume E:. the volumes do not contain any data.

You install the Data Deduplication role service on Server1.

You need to implement Data Deduplication for volumes on D: and E:.

Solution: From Windows PowerShell, you run `Format-Volume D: -FileSystem NTFS` and `Enable-DeDupVolume-Volume D:,E:.`

Does this meet the goal?

A. Yes

B. No

**Answer: A**

#### NEW QUESTION 332

Note: This question is part of a series of questions that use the same or similar answer choices. An answer choice may be correct for more than one question in the series. Each question is independent of the other questions in this series. Information and details provided in a question apply only to that question.

You have two servers named Server1 and Server2 that run Windows Server 2016. Server1 and Server2 have the Hyper-V server role installed and are nodes in a failover cluster.

On Server1, an administrator creates a virtual machine named VM1. You need to configure VM1 for high availability.

Which tool should you use?

A. the `clussvc.exe` command

B. the `cluster.exe` command

C. the Computer Management snap-in

D. the `configurehyperv.exe` command

E. the Disk Management snap-in

F. the Failover Cluster Manager snap-in

G. the Hyper-V Manager snap-in

H. the Server Manager app

**Answer: F**

#### NEW QUESTION 335

You have a Nano Server image named `Disk1.vhdx`.

You mount `Disk1.vhdx`.

You need to add a folder that contains several files to the image. Which tool or cmdlet should you use?

A. File Explorer.

B. Add-Windows Image

C. Nano Server Image Builder

D. Server Manager

**Answer: D**

#### NEW QUESTION 337

Note: This question is part of a series of questions that use the same scenario. For your convenience, the scenario is repeated in each question. Each question presents a different goal and answer choices, but the text of the scenario is exactly the same in each question in this series.

Start of Repeated Scenario:

A company named Contoso, Ltd. has several servers that run Windows Server 2016. Contoso has a Hyper-V environment that uses failover clustering and Windows Server Update Services (WSUS). The environment contains several Windows containers and several virtual machines.

The WSUS deployment contains one upstream server that is located on the company's perimeter network and several downstream servers located on the internal network. A firewall separates the upstream server from the downstream servers.

You plan to deploy a human resources application to a new server named HRServer5. HRServer5 contains a FAT32-formatted data volume.

The CIO of Contoso identifies the following requirements for the company's IT department:

- Deploy failover cluster to two new virtual machines.
- Store all application databases by using Encrypted File System (EFS).
- Ensure that each Windows container has a dedicated IP address assigned by a DHCP server.

- Produce a report that lists the processor time used by all of the processes on a server named Server 1 for five hour.
- Encrypt all communication between the internal network and the perimeter network, including all WSUS communications.
- Automatically load balance the virtual machines hosted in the Hyper-V cluster when processor utilization exceeds 70 percent.
- End of Repeated Scenario.
- You need to modify the Hyper V cluster to meet the load balancing requirement for the virtual machine. Which command should you run?
- A. Create a firewall rule 10 allow TCP port 443.  
 B. Create a firewall rule to allow TCP port 8531.  
 C. Require- SSI Oil the Client WebService virtual directory.  
 D. Require SSI on the Inventory virtual directory.

**Answer: D**

#### NEW QUESTION 342

Note This question is part of a series of questions that use the same scenario. For your convenience, the scenario is repeated in each question. Each question presents a different goal and answer choices, but the text of the scenario is exactly the same in each question in this series.

Start of Repeated Scenario:

A company named Contoso, Ltd. has several servers that run Windows Server 2016 Contoso has a Hyper V environment that uses failover clustering and Windows Server Update Services (WSUS). The environment contains several Windows containers and several virtual machines.

The WSUS deployment contains one upstream server that is located on the company's perimeter network and several downstream servers located on the internal network, A firewall separates the upstream server from the downstream servers.

You plan to deploy a human resources application to a new server named HRServer5. HRServer5 contains a FAT32-formatted data volume.

The CIO of Contoso identifies the following requirements for the company's IT department:

- Deploy failover cluster to two new virtual machines.
  - Store all application databases by using Encrypted File System (EFS).
  - Ensure that each Windows container has a dedicated IP address assigned by a DHCP server
  - Produce a report that lists the processor time used by all of the processes on a server named Server 1 for five hour.
- Encrypt all communication between the internal network and the perimeter network, including all WSUS communications.
- Automatically load balance the virtual machines hosted in the Hyper-V cluster when processor utilization exceeds 70 percent.

End of Repeated Scenario.

You need to modify the Hyper V cluster to meet the load balancing requirement for the virtual machine. Which command should you run?

- A. network address translation (NAT)  
 B. I2bridge  
 C. I2tunnel  
 D. transparent

**Answer: A**

#### NEW QUESTION 347

HOTSPOT

You have two Hyper-V hosts named Server1 and Server2 that run Windows Server 2016. Server1 and Server2 connect to the same network. Server1 and Server2 have virtual switches configured as shown in the following table.

Switch name	Host	Type	VLAN ID
Switch1	Server1	External	2
Switch2	Server2	External	4
Switch3	Server2	Internal	<i>Not applicable</i>

You have nine virtual machines configured as shown in the following table.

Virtual machine name	Connected to	VLAN ID
VM1	Switch1	2
VM2	Switch1	<i>Not applicable</i>
VM3	Switch1	4
VM4	Switch2	2
VM5	Switch2	<i>Not applicable</i>
VM6	Switch2	4
VM7	Switch3	2
VM8	Switch3	<i>Not applicable</i>
VM9	Switch3	4

All of the virtual machines are configured to have IP addresses from the same network segment. The firewall on each of the virtual machines is configured to allow network connectivity.

To which virtual machines can you connect from VM1 and VM2? To answer, select the appropriate options in the answer area.

## Answer Area

Virtual machines to which you can connect from VM1:

	▼
VM4 only	
VM4 and VM7	
VM2, VM4, and VM5	
None	

Virtual machines to which you can connect from VM2:

	▼
VM5 only	
VM1 and VM3	
VM5 and VM8	
VM5, VM7, VM8, and VM9	
None	

- A. Mastered
- B. Not Mastered

Answer: A

Explanation:

## Answer Area

Virtual machines to which you can connect from VM1:

	▼
VM4 only	
VM4 and VM7	
VM2, VM4, and VM5	
None	

Virtual machines to which you can connect from VM2:

	▼
VM5 only	
VM1 and VM3	
VM5 and VM8	
VM5, VM7, VM8, and VM9	
None	

### NEW QUESTION 348

You have a Scale-Out File Server that has a share named Share 1. Share1 contains a virtual disk trie named Disk1.vhd.  
 You plan to create a guest failover cluster.  
 You need to ensure that you can use the virtual disk as a shared virtual disk for the guest failover\*  
 Cluster.  
 Which cmdlet should you use?

- A. Optimize-VHD
- B. Convert-VHD
- C. Set-VHO
- D. Optimize-VHDSets

Answer: A

### NEW QUESTION 350

Note: This question is part of a series questions that present the same scenario, Each question in the series contains a unique solution that might meet the stated goals. Some question sets might have more than one correct solution, while others might not have a correct solution.

After you answer a question in this section, you will NOT be able to return to it. As a result, these questions will not appear in the review screen.

You have a server named Server1 that runs Windows Server 2016. Server1 is a Docker Host.

You are creating a Docker file to build 3 Docker image.

You need to add a file named File1.txt from Server1 to, C:\folder1\ in the Docker image.



What are two possible commands that you can use to achieve the goal/ Each correct answer presents a complete solution.  
NOTE: Each correct selection is worth one point.

- A. COPY file1.txt c:/folder1/
- B. copy-item file1.txt folder1\file1.txt
- C. ROBOCOPY file.txt \folder1\
- D. XCOPY file1.txt c:\folder1\
- E. ADD file1.txt /folder1/

**Answer:** AE

#### NEW QUESTION 351

You have two servers named Server1 and Server 2 that run Windows Server 2016.  
Server 1 and Server 2 are nodes in a Network Load Balancing (NLB) cluster. The Web Sever server role is installed on each node.  
Users report that when they submit web form data, sometimes the data is not stored, and they must full in the form again.  
You need to resolve the issue. The solution must ensure that connections are load balanced between Server 1 Server 2.  
What should you do in the NLB cluster?

- A. Modify the existing port rules.
- B. Modify the Cluster operation mode.
- C. Add the Microsoft Load Balancing/Failover Provider service to all of the network adapters.
- D. Add an IP address.

**Answer:** B

#### NEW QUESTION 355

You have a Windows Server 2016 failover cluster named Ousted that contains three nodes named  
Server 1, Server 2, and Server 3. Each node hosts several virtual machines. the virtual machines are configured to fail over to another node in Ousted if the  
hosting node tails.  
You need to ensure that it if the Cluster service tails on one of the nodes, the virtual machine of that node will fail over immediately.  
Which setting should you configure?

- A. failureConditionLevel
- B. QuarantineDuration
- C. Resiliency Period
- D. ResiliencyLevel

**Answer:** B

#### NEW QUESTION 360

You have two Hyper-V hosts named Server1 and Server2 that run Windows Server 2016. The hosts are nodes in failover cluster.  
A highly available virtual machine named VM1 is running on Server1. You need to move VM1 to Server2 while minimizing downtime.  
What should you do?

- A. From Windows PowerShell, run Move-ClusterGroup
- B. From Hyper-V Manager, use the Move action.
- C. From Failover Cluster Manager, use the Move Virtual Machine Storage option.
- D. From Windows PowerShell, run Move-VM.

**Answer:** A

#### NEW QUESTION 362

Your network contains an Active Directory domain named adatum.com The domain contains Network load Balancing (NLB) cluster as shown in the exhibit. (Click the Exhibit button.)  
Which hosts will respond to requests sent to nlb.adatum.com?

The screenshot shows the Network Load Balancing Manager interface. On the left, a tree view shows the 'Network Load Balancing Cluster' expanded, with 'NLB.Adatum.com (192.168.10.50)' selected. The main pane displays 'Host configuration information for hosts in cluster NLB.Adatum.com'. Below this is a table with the following data:

Host (interface)	Status	Dedicated IP...	Dedic
SERVER1 (Ethernet 2)	Suspended	192.168.10.1	255.255
SERVER2 (Ethernet 2)	Converged	192.168.10.2	255.255
SERVER3 (Ethernet 2)	Stopped	192.168.10.3	255.255

Below the table is a log view with the following entries:

Log En...	Date	Time	Cluster	Host	Description
0040	7/8/2017	2:07:53 AM	192.168.10...	SERVER2	End configuration change
00401	7/8/2017	2:07:53 AM	192.168.10...	SERVER1	Update 6 succeeded [double click
0042	7/8/2017	2:07:53 AM	192.168.10...	SERVER1	End configuration change

- A. Server1 only
- B. Server2 only
- C. Server1 an Server2 only
- D. Server1 ,Server2

Answer: B

#### NEW QUESTION 365

##### HOTSPOT

You have a server named Server1 that runs Windows Servers 2016. Server1 has a storage array that contains multiple storage enclosures. The storage hardware supports enclosure awareness.

You need to implement Storage Spaces on Server1. Storage Spaces must remain available if two enclosures fail. The solution must minimize the number of enclosures required and must provide the fastest possible write performance.

Which configurations should you use? To answer, select the appropriate options in the answer area. NOTE: Each correct selection is worth one point.

## Answer Area

Resiliency type:

▼

Dual parity

Single parity

Three-way mirror

Two-way mirror

Number of enclosures:

▼

3

4

5

6

- A. Mastered
- B. Not Mastered

Answer: A

##### Explanation:

References: <https://docs.microsoft.com/en-us/windows-server/storage/storage-spaces/storage-spaces-fault-tolerance#summary>

#### NEW QUESTION 370

##### HOTSPOT

You have a server named Server1 that runs Windows Server 2016. You create a storage pool named Pool1. Pool1 contains three disks. You need to create a two-way mirror storage space from the disks in Pool1. Which command should you run? To answer, select the appropriate options in the answer area. NOTE: Each correct selection is worth one point.

## Answer Area

▼

New-StorageSunsystemVirtualDisk  
New-VHD  
New-VirtualDisk  
New-Volume

-StoragePoolFirendlyName Pool1 -FirendlyName Space1-  
-UseMaximumSize -ResiliencySettingName Mirror

-NumberOfDataCopies

▼

1  
2  
3

-NumberOfColumns-

▼

1  
2  
3

- A. Mastered
- B. Not Mastered

**Answer:** A

### Explanation:

References: <https://charbelnemnom.com/2014/09/step-by-step-how-to-create-a-two-way-mirrored-storage-space-via-powershell-storagespaces-powershell/>

### NEW QUESTION 371

You have a Windows Server 2016 failover cluster 1 that contains four nodes named Server1, Server2, Server3, Server4. Cluster1 hosts 40 virtual machines that are distributed evenly across the nodes. Server1 and Server2 are located in a data center in Madrid. Server3 and Server4 are located in a data center in Barcelona.

You need to ensure that when you pause a node in the other data center.

Which two actions should you perform? Each correct answer present part of the solution.

- A. Run the New-Cluster Fault Domain cmdlet.
- B. Run the Add-Cluster Group cmdlet.
- C. Configure a file share witness for each data center.
- D. Run the Set-Cluster Fault Domain cmdlet.
- E. Create an Active Directory site for each data center.
- F. Change the quorum configuration of the cluster to Node Majority.

**Answer:** BD

### NEW QUESTION 375

You have a Hyper-V host named Server1 that runs Windows Server 2016. Server1 host a virtual machine named VM1. VM1 has the following settings: Nested virtualization is enabled.

Dynamic Memory is disabled. VM1 is currently running.

You need to adjust the amount of memory assigned to VM1 as quickly as possible. What should you do first?

- A. Change the memory buffer setting of VM1.
- B. Pause VM1.
- C. Shut down VM1.
- D. Enable Dynamic Memory for VM1.

**Answer:** D

### NEW QUESTION 380

You have a server named Server1 that runs Windows Server 2016.

Server1 has four SCSI disks and a storage pool named Pool1 that contains three disks. You create a virtual disk named Disk 1 that uses a mirrored layout.

You create a partition named Partition1 that uses all of the available space on Disk 1. You need to extend Partition1.

What should you do first?

- A. From Windows PowerShell, run the Resize-Partition cmdlet.
- B. From Disk Management, modify the properties of Partition1.
- C. From the Storage Pools page in Server Manager, extend a virtual disk.
- D. From Disk Management, extend a volume.

**Answer:** C

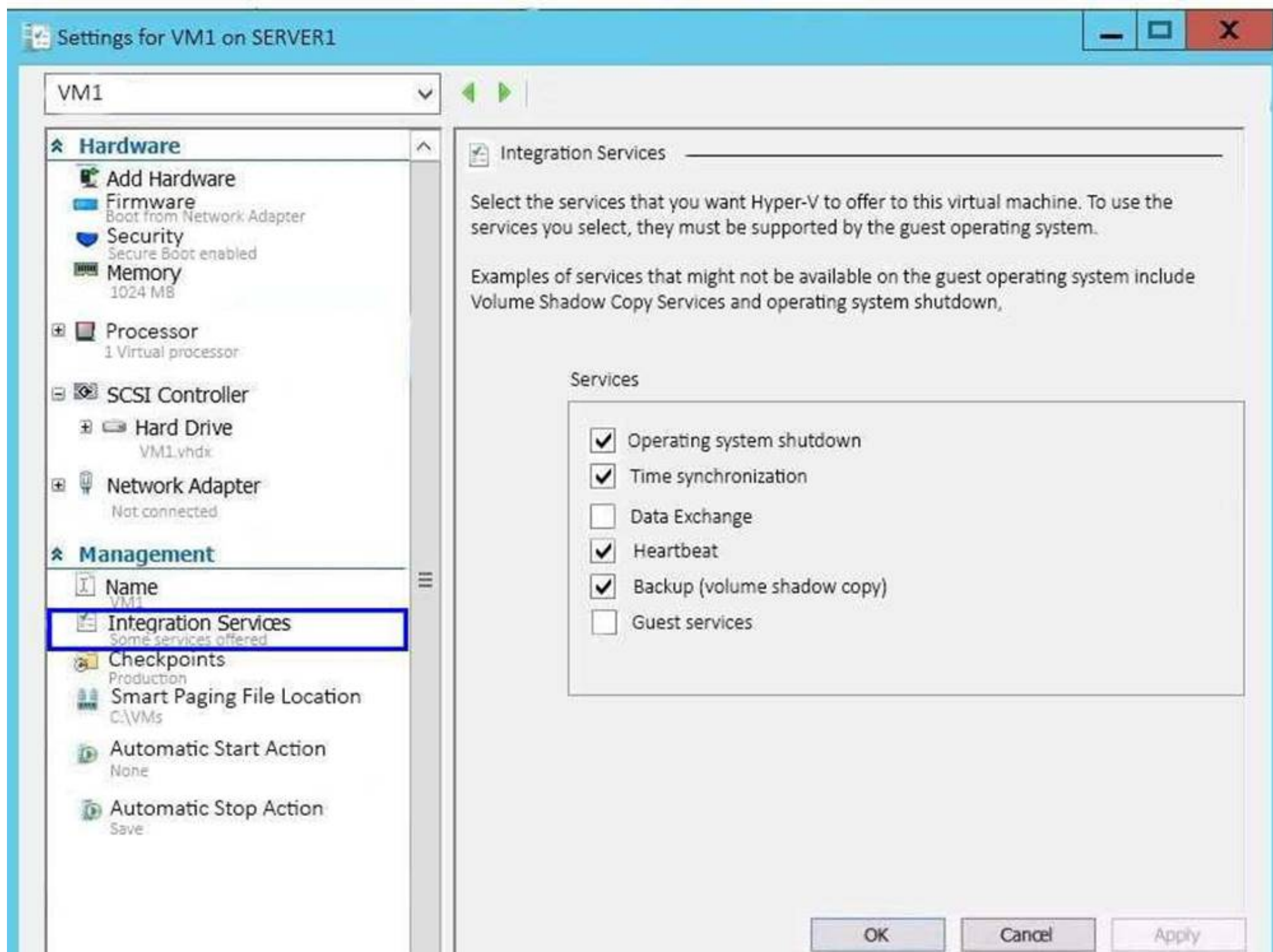
### Explanation:

References: <https://charbelnemnom.com/2015/03/step-by-step-how-to-extend-and-resize-a-two-way-mirrored-storage-tiered-space-storagespaces-ws2012r2/>



### NEW QUESTION 381

Note: This question is part of a series of questions that present the same scenario. Each question in the series contains a unique solution that might meet the stated goals. Some question sets might have more than one correct solution, while others might not have a correct solution.  
 After you answer a question in this section, you will NOT be able to return to it. As a result, these questions will not appear in the review screen.  
 You have a Hyper-V host named Server1 that hosts a virtual machine named VM1. Server1 and VM1 run Windows Server 2016.  
 The settings for VM1 are configured as shown in the exhibit. (Click the Exhibit button.)



You need to ensure that you can use the Copy-VMFile cmdlet on Server1 to copy files from VM1. Solution: You enable the Guest services integration service for VM1.

Does this meet the goal?

- A. Yes
- B. No

**Answer: A**

#### Explanation:

References: [https://technet.microsoft.com/en-us/library/dn798297\(v=ws.11\).aspx](https://technet.microsoft.com/en-us/library/dn798297(v=ws.11).aspx)

### NEW QUESTION 385

#### HOTSPOT

Your network contains an Active Directory domain named contoso.com. The domain contains three clusters named FC1, FC2, and FC3.  
 The domain contains servers that run Windows Server 2016. The servers are configured as shown in the following table.

Server name	CPU	Memory	Cluster
Server1	Intel Xeon E3	128 GB	FC1
Server2	Intel Xeon E3	128 GB	FC1
Server3	Intel Xeon E3	64 GB	FC2
Server4	Intel Xeon E3	64 GB	FC2
Server5	AMD Opteron	256 GB	FC3
Server6	AMD Opteron	256 GB	FC3

Server1 hosts a highly available virtual machine named VM1.

You are creating a maintenance plan for the servers, and you are evaluating how to move VM1 to the different clusters.

You need to identify the fastest method to move VM1 to FC2 and FC3.

Which method should you identify for each cluster? To answer, select the appropriate options in the answer area.

NOTE: Each correct selection is worth one point.

Answer Area

Fastest method to move VM1 to FC2:

Export and import
Live migration
Quick migration

Fastest method to move VM1 to FC3:

Export and import
Live migration
Quick migration

- A. Mastered
- B. Not Mastered

Answer: A

Explanation:  
References: <https://www.petri.com/move-virtual-machine-between-hyper-v-hosts>

**NEW QUESTION 390**  
HOTSPOT  
You have a Windows Server 2016 failover cluster named Cluster1. You need to implement Cloud Witness for Cluster 1. What should you do? To answer, select the appropriate options in the answer area. NOTE: Each correct selection is worth one point.

## Answer Area

In Microsoft Azure, create:

An availability set
An integration account
A public IP address
A Recovery Services vault
A storage account

On Cluster1, run:

Add-ClusterResource
Add-ClusterResourceType
Set-ClusterParameter
Set-ClusterQuorum

- A. Mastered
- B. Not Mastered

**Answer:** A

### Explanation:

References:

<https://www.vembu.com/blog/deploying-a-azure-cloud-witness-for-a-failover-cluster-in-windows-server-2016/>  
<https://docs.microsoft.com/en-us/powershell/module/failoverclusters/set-clusterquorum?view=win10-ps>

### NEW QUESTION 393

You have a server named Server1 that runs Windows Server 2016.

The server has an application named App1. App1 writes entries to the Application event log when errors are encountered. The events have IDs of either 111 or 112.

You need to restart the service whenever either of these events is logged. What should you do?

- A. From Windows PowerShell, run the Write-EventLog cmdlet and specify the-EventID parameter and the -Source parameter.
- B. From Event Viewer, create a custom view that has a filter for the event IDs.
- C. From Event Viewer, create a subscription that has a filter for the event IDs.
- D. From Task Scheduler, use Create Task to create one task that includes triggers for both event IDs.
- E. From Windows PowerShell, run the Get-SMSEvent cmdlet and pipe the output to the Start-NetEventSession cmdlet.
- F. From Performance Monitor, add an Event Trace Session data collector that uses the Microsoft-Windows-Eventlog provider.

**Answer:** D

### NEW QUESTION 398

Note: This question is part of a series of questions that present the same scenario. Each question in

the series contains a unique solution that might meet the stated goals. Some question sets might have more than one correct solution, while others might not have a correct solution.

After you answer a question in this section, you will NOT be able to return to it. As a result, these questions will not appear in the review screen.

You network contains an Active Directory forest named contoso.com. The forest contains a child domain named eu.contoso.com.

You plan to implement live migration between two Hyper-V hosts that run Windows Server 2016. The hosts are configured as shown in the following table.



Host name	Configuration
Host1	<ul style="list-style-type: none"> <li>Is a member of the contoso.com domain</li> <li>Uses an Intel Xeon processor released in 2012</li> <li>Has an external virtual switch named Switch1</li> <li>Hosts a virtual machine named VM1 that connects to Switch1</li> </ul>
Host2	<ul style="list-style-type: none"> <li>Is a member of the eu.contoso.com domain</li> <li>Uses an Intel Xeon processor released in 2016</li> <li>Has an external virtual switch named Switch1</li> </ul>

You need to ensure that you can perform a live migration of VM1 from Host1 to Host2.

Solution: On Host1 and Host2, you create a private switch named Priv1, and then you connect VM1 to Priv1.

Does meet the goal?

- A. Yes  
 B. No

**Answer: B**

#### NEW QUESTION 401

Note: This question is part of a series of questions that present the same scenario. Each question in the series contains a unique solution that might meet the stated goals. Some question sets might have more than one correct solution, while others might not have a correct solution.

After you answer a question in this section, you will NOT be able to return to it. As a result, these questions will not appear in the review screen.

You have an Exchange Server 2016 organization.

Some users access the mailbox on their mobile device by using Exchange ActiveSync.

You need to prevent the users from synchronizing more than one month of email or calendar data to their device.

Solution: You deploy an Allow/Block/Quarantine policy. Does this meet the goal?

- A. Yes  
 B. No

**Answer: B**

#### NEW QUESTION 406

Note: This question is part of a series of questions that present the same scenario. Each question in the series contains a unique solution that might meet the stated goals. Some question sets might have more than one correct solution, while others might not have a correct solution.

After you answer a question in this section, you will NOT be able to return to it. As a result, these questions will not appear in the review screen.

Your network contains an Active Directory forest.

You install Windows Server 2016 on 10 virtual machines.

You need to deploy the Web Server (IIS) server role identically to the virtual machines.

Solution: You use Windows PowerShell Desired State Configuration (DSC) to create a default configuration, and then you apply the configuration to the virtual machines.

Does this meet the goal?

- A. Yes  
 B. No

**Answer: A**

#### Explanation:

References:

<https://www.simple-talk.com/sysadmin/powershell/powershell-desired-state-configuration-the-basics/>

#### NEW QUESTION 411

Note: This question is part of a series of questions that use the same scenario. For your convenience, the scenario is repeated in each question. Each question presents a different goal and answer choices, but the text of the scenario is exactly the same in each question in this series.

A company named Contoso, Ltd. has several servers that run Windows Server 2016. Contoso has a Hyper-V environment that uses failover clustering and Windows Server Update Services (WSUS). The environment contains several Windows containers and several virtual machines.

The WSUS deployment contains one upstream server that is located on the company's perimeter network and several downstream servers located on the internal network. A firewall separates the upstream server from the downstream servers.

You plan to deploy a human resources application to a new server named HRServer5. HRServer5 contains a FAT32-formatted data volume.

The CIO of Contoso identifies the following requirements for the company's IT department:

Deploy a failover cluster to two new virtual machines.

Store all application databases by using Encrypted File System (EFS).

Ensure that each Windows container has a dedicated IP address assigned by a DHCP server.

Produce a report that lists the processor time used by all of the processes on a server named Server1 for five hours.

Encrypt all communication between the internal network and the perimeter network, including all WSUS communications.

Automatically load balance the virtual machines hosted in the Hyper-V cluster when processor utilization exceeds 70 percent.

Which networking mode should you configure for the Windows containers?

- A. 12tunnel
- B. 12bridge
- C. network address translation (NAT)
- D. transparent

**Answer:** C

**Explanation:**

References: <https://blogs.technet.microsoft.com/virtualization/2016/05/05/windows-container-networking/>

**NEW QUESTION 413**

You have a server named Server1 that runs Windows Server 2016.  
You need to install the DNS Server role on Server1. What should you run?

- A. the Install-Package cmdlet
- B. the Add-WindowsPackage cmdlet
- C. the Add-WindowsFeature cmdlet
- D. the setup.exe command

**Answer:** C

**NEW QUESTION 418**

You have a Network Load Balancing (NLB) cluster that contains two nodes named Server1 and Server2. The nodes run Windows Server 2016.  
The NLB cluster has the following configuration.

ClusterName	:						
IPAddress	:	172.16.4.1					
Name	:						
ClusterIPAddress	:	172.16.4.1					
ClusterNetworkMask	:	255.255.0.0					
ClusterMacAddress	:	02-bf-ac-10-04-01					
OperationMode	:	UNICAST					
BdaReverseHash	:	False					
BdaTeamActive	:	False					
BdaTeamId	:						
BdaTeamMaster	:	False					
IPAddress	State	Start	End	Protocol	Mode	Affinity	Timeout
-----	-----	-----	-----	-----	-----	-----	-----
All	Enabled	0	65535	Both	Multiple	Single	0

You deploy the Web Server (IIS) server role identically to both servers.  
You need to configure NLB to load balance requests between the web servers. HTTP requests must be stateless. HTTPS requests must be stateful.  
What should you do? Each correct answer presents part of the solution.

- A. Modify the Cluster operation mode.
- B. Suspend the cluster.
- C. Drainstop the cluster.
- D. Add a new port rule.
- E. Edit the existing port rule.

**Answer:** CD

**Explanation:**

References:  
<https://www.ntweekly.com/2017/09/04/failover-nlb-cluster-host-member/> <https://docs.microsoft.com/en-us/windows-server/networking/technologies/network-load-balancing>

**NEW QUESTION 420**

You have a server named Server1 that runs Windows Server 2016. Windows Defender is enabled on Server1.  
Server1 runs an application named App1 that stores various types of files in Microsoft OneDrive for Business, MicrosoftOneDrive, and Microsoft SharePoint Online. App1 also interacts with several local services.  
You need to prevent Windows Defender from scanning any files opened by App1. What should you do on Server1?

- A. Run the Set-ExecutionPolicy cmdlet.
- B. Run the New-AppLockerPolicy cmdlet.

- C. Modify the real-time protection settings in Windows Defender.
- D. Run the Add-MpPreference cmdlet.

Answer: D

Explanation:

References:  
<https://docs.microsoft.com/en-us/windows/security/threat-protection/windows-defender-antivirus/configure-proc>

NEW QUESTION 425

You have a Hyper-V host named Server1 that runs Windows Server 2016. Server1 hosts a virtual machine named VM1 that runs Windows Server 2012. VM1 has the following configuration.

```
C:\>Get-VM VM1 | fl Version, HardDrives, DynamicMemoryEnabled, Generation, MemoryStartup

Version           : 5.0
HardDrives         : {Hard drive on IDE controller number 0 at location 0}
DynamicMemoryEnabled : False
Generation         : 1
MemoryStartup      : 536870912

C:\>Get-VMIntegrationService VM1

VMName Name                Enabled PrimaryStatusDescription SecondaryStatusDescription
-----
VM1    Guest Service Interface False      OK
VM1    Heartbeat                False      OK
VM1    Key-Value Pair Exchange  False      OK
VM1    Shutdown                 False      OK
VM1    Time Synchronization     False      OK
VM1    VSS                      False      OK
```

You discover that when you back up Server1, VM1 temporarily pauses. You need to ensure that you can back up Server1 without causing downtime on VM1. What should you do?

- A. Increase the memory on VM1
- B. Connect the hard disk drive of VM1 to an SCSI controller
- C. Update the virtual machine version of VM1
- D. Upgrade VM1 to Windows Server 2016
- E. Enable the VSS integration service on VM1

Answer: E

Explanation:

References:  
<https://www.starwindsoftware.com/blog/hyper-v-backup-challenges-windows-server-2016-needs-to-address>

NEW QUESTION 430

.....



## Thank You for Trying Our Product

### We offer two products:

1st - We have Practice Tests Software with Actual Exam Questions

2nd - Questons and Answers in PDF Format

### 70-740 Practice Exam Features:

- \* 70-740 Questions and Answers Updated Frequently
- \* 70-740 Practice Questions Verified by Expert Senior Certified Staff
- \* 70-740 Most Realistic Questions that Guarantee you a Pass on Your FirstTry
- \* 70-740 Practice Test Questions in Multiple Choice Formats and Updatesfor 1 Year

**100% Actual & Verified — Instant Download, Please Click**  
**[Order The 70-740 Practice Test Here](#)**