



Microsoft

Exam Questions 70-410

Installing and Configuring Windows Server 2012

NEW QUESTION 1

- (Topic 1)

Your network contains an Active Directory domain named contoso.com. The domain contains a server named Server1 that runs Windows Server 2012 R2 and has the Remote Access server role installed.

A user named User1 must connect to the network remotely. The client computer of User1 requires Challenge Handshake Authentication Protocol (CHAP) for remote connections. CHAP is enabled on Server1.

You need to ensure that User1 can connect to Server1 and authenticate to the domain. What should you do from Active Directory Users and Computers?

- A. From the properties of User1, select Store password using reversible encryption.
- B. From the properties of Server1, assign the Allowed to Authenticate permission to User1.
- C. From the properties of User1, select Use Kerberos DES encryption types for this account.
- D. From the properties of Server1, select Trust this computer for delegation to any service (Kerberos only).

Answer: A

Explanation:

The Store password using reversible encryption policy setting provides support for Applications that use protocols that require the user's password for authentication. Storing encrypted passwords in a way that irreversible means that the encrypted passwords can be decrypted. A knowledgeable attacker who is able to break this encryption can then log on to network resources by using the compromised account. For this reason, never enable Store password using reversible encryption for all users in the domain unless Application requirements outweigh the need to protect password information. If you use the Challenge Handshake Authentication Protocol (CHAP) through remote access or Internet Authentication Services (IAS), you must enable this policy setting. CHAP is an authentication protocol that is used by remote access and network connections.

Digest Authentication in Internet Information Services (IIS) also requires that you enable this policy setting. If your organization uses CHAP through remote access or IAS, or Digest Authentication in IIS, you must configure this policy setting to Enabled. This presents a security risk when you Apply the setting through Group Policy on a user-by-user basis because it requires the appropriate user account object to be opened in Active Directory Users and Computers.

NEW QUESTION 2

- (Topic 1)

Your network contains a server named Server1 that runs Windows Server 2012 R2. Server1 has the Hyper-V server role installed.

Server1 hosts four virtual machines named VM1, VM2, VM3, and VM4. Server1 is configured as shown in the following table.

Hardware component	Configuration
Processor	Eight quad-core CPUs that have non-uniform memory access (NUMA)
Memory	32 GB of RAM
Disk	Two local 4-TB disks
Network	Eight network adapters VMQ-supported PCI-SIG-supported

VM2 sends and receives large amounts of data over the network.

You need to ensure that the network traffic of VM2 bypasses the virtual switches of the parent partition.

What should you configure?

- A. NUMA topology
- B. Resource control
- C. resource metering
- D. virtual Machine Chimney
- E. The VLAN ID
- F. Processor Compatibility
- G. The startup order
- H. Automatic Start Action
- I. Integration Services
- J. Port mirroring
- K. Single-root I/O virtualization

Answer: K

Explanation:

Single-root I/O virtualization -capable network adapters can be assigned directly to a virtual machine to maximize network throughput while minimizing network latency and the CPU overhead required for processing network traffic.

References: [http://technet.microsoft.com/en-us/library/cc766320\(v=ws.10\).aspx](http://technet.microsoft.com/en-us/library/cc766320(v=ws.10).aspx) <http://technet.microsoft.com/en-us/library/hh831410.aspx>

Exam Ref 70-410, Installing and Configuring Windows Server 2012 R2, Chapter 3: Configure Hyper-V, Objective 3.1: Create and Configure virtual machine settings, p.144 Training Guide: Installing and Configuring Windows Server 2012 R2: Chapter 7: Hyper-V Virtualization, Lesson 2: Deploying and configuring virtual machines, p.335

NEW QUESTION 3

- (Topic 1)

Your network contains a server named Server1 that runs Windows Server 2012 R2. Server1 has the Hyper-V server role installed.

Server1 hosts four virtual machines named VM1, VM2, VM3, and VM4. Server1 is configured as shown in the following table.

Hardware component	Configuration
Processor	Eight quad-core CPUs that have non-uniform memory access (NUMA)
Memory	32 GB of RAM
Disk	Two local 4-TB disks
Network	Eight network adapters VMQ-supported PCI-SIG-supported

You need to ensure that VM1 can use more CPU time than the other virtual machines when the CPUs on Server1 are under a heavy load. What should you configure?

- A. NUMA topology
- B. Resource control
- C. resource metering
- D. virtual Machine Chimney
- E. The VLAN ID
- F. Processor Compatibility
- G. The startup order
- H. Automatic Start Action
- I. Integration Services
- J. Port mirroring
- K. Single-root I/O virtualization

Answer: B

Explanation:

B. Resource controls provide you with several ways to control the way that Hyper-V allocates resources to virtual machine. Resource control is used in the event where you need to adjust the computing resources of a virtual machine, you can reconfigure the resources to meet the changing needs. You can also specify resource controls to automate how resources are allocated to virtual machines.

References:

[http://technet.microsoft.com/en-us/library/cc766320\(v=ws.10\).aspx](http://technet.microsoft.com/en-us/library/cc766320(v=ws.10).aspx)

<http://technet.microsoft.com/en-us/library/hh831410.aspx> <http://technet.microsoft.com/en-us/library/cc742470.aspx>

Exam Ref 70-410, Installing and Configuring Windows Server 2012 R2, Chapter 3: Configure Hyper-V, Objective 3.1: Create and Configure virtual machine settings, p.144 Training Guide: Installing and Configuring Windows Server 2012 R2: Chapter 7: Hyper-V Virtualization, Lesson 2: Deploying and configuring virtual machines, p.335

NEW QUESTION 4

- (Topic 1)

Your network contains two Hyper-V hosts that run Windows Server 2012 R2. The Hyper-V hosts contain several virtual machines that run Windows Server 2012 R2.

You install the Network Load Balancing feature on the virtual machines.

You need to configure the virtual machines to support Network Load Balancing (NLB). Which virtual machine settings should you configure?

- A. DHCP guard
- B. Port mirroring
- C. Router guard
- D. MAC address

Answer: D

Explanation:

<http://social.technet.microsoft.com/Forums/windowsserver/en-US/5b3a0a9d-26a2-49ba-bbbe-29d11fcb7ce/nlb-on-hyperv?forum=winserverhyperv>

For NLB to be configured you need to enable MAC address spoofing.

NEW QUESTION 5

- (Topic 1)

Your network contains an Active Directory forest named contoso.com. The forest contains

a single domain. The domain contains two domain controllers named DC1 and DC2 that run Windows Server 2012 R2.

The domain contains a user named User1 and a global security group named Group1. You need to modify the SAM account name of Group1.

Which cmdlet should you run?

- A. Add-AdPrincipalGroupMembership
- B. Install-AddsDomainController
- C. Install-WindowsFeature
- D. Install-AddsDomain
- E. Rename-AdObject
- F. Set AdAccountControl
- G. Set-AdGroup
- H. Set-User

Answer: G

NEW QUESTION 6

DRAG DROP - (Topic 1)

Your network contains three servers. The servers are configured as shown in the following table.

Server name	CPU type	Operating system	Installation type
Server1	x86	32-bit Windows Server 2008 Service Pack 2 (SP2)	Full
Server2	X86	32-bit Windows Server 2008 Service Pack 2 (SP2)	Server Core
Server3	x64	64-bit Windows Server 2008 R2	Full

Your company plans to standardize all of the servers on Windows Server 2012 R2. You need to recommend an upgrade path for each server.

The solution must meet the following requirements:

? Upgrade the existing operating system whenever possible.

? Minimize hardware purchases.

Which upgrade path should you recommend for each server?

To answer, drag the appropriate upgrade path to each server in the answer area. Each upgrade path may be used once, more than once, or not at all.

Answer Area	
Server1	
Server2	
Server3	

Clean installation on new hardware

Clean installation on existing hardware

Upgrade on existing hardware

- A. Mastered
- B. Not Mastered

Answer: A

Explanation:

Upgrade paths for Windows Server 2012 R2 are limited. In fact, it's easier to specify when you can perform an upgrade than when you can't. If you have a 64-bit computer running Windows Server 2008 or Windows Server 2008 R2, then you can upgrade it to Windows Server 2012 R2 as long as you use the same operating system edition.

Windows Server 2012 R2 does not support the following:

Upgrades from Windows Server versions prior to Windows Server 2008 Upgrades from pre-RTM editions of Windows Server 2012 R2 Upgrades from Windows workstation operating systems

Cross-platform upgrades, such as 32-bit Windows Server 2008 to 64-bit Windows Server 2012

Upgrades from any Itanium edition

Cross-language upgrades, such as from Windows Server 2008, U.S.English to Windows Server 2012, French

In any of these cases, the Windows Setup program will not permit the upgrade to proceed.

References:

<http://technet.microsoft.com/en-us/library/jj134246.aspx>

NEW QUESTION 7

- (Topic 1)

Your network contains an Active Directory domain named contoso.com. The domain contains an organizational unit (OU) named OU1.

You need to ensure that when new client computers join the domain, their computer accounts are created in OU1 by default.

What should you do?

- A. From Windows PowerShell, run the Move-ADObjectcmdlet.
- B. From a command prompt, run the redircmp.exe command.
- C. From ADSI Edit, configure the properties of the OU1 object.
- D. From Ldp, configure the properties of the Computers container.

Answer: B

Explanation:

Redirects the default container for newly created computers to a specified, target organizational unit (OU) so that newly created computer objects are created in the specific target OU instead of in CN=Computers.

The CN=Computers container is a computer-protected object. For backward compatibility reasons, you cannot (and must not) remove it.

Reference: <http://technet.microsoft.com/en-us/library/cc770619.aspx>

NEW QUESTION 8

- (Topic 1)

You have a server named Server1 that runs Windows Server 2012 R2. Server1 has the Hyper-V server role installed. Server1 is connected to two Fibre Channel

SANs and is configured as shown in the following table.

Host bus adapter (HBA) name	Fibre Channel SAN name
HBA1	SAN1
HBA2	SAN2
HBA3	SAN1
HBA4	SAN2

You have a virtual machine named VM1.

You need to configure VM1 to connect to SAN1. What should you do first?

- A. Add one HBA
- B. Create a Virtual Fibre Channel SAN.
- C. Create a Hyper-V virtual switch.
- D. Configure network adapter teaming.

Answer: B

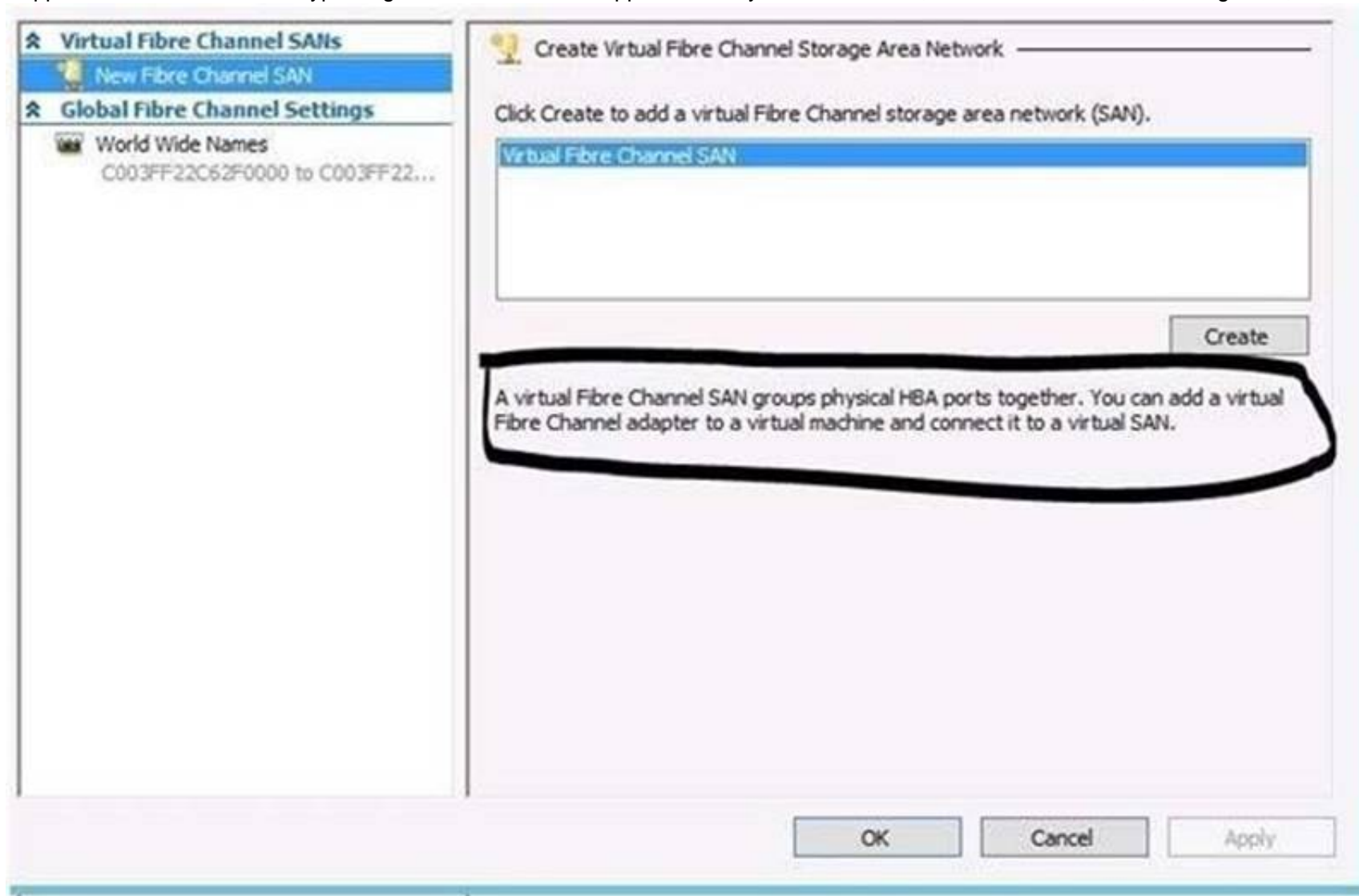
Explanation:

You need your virtualized workloads to connect easily and reliably to your existing storage arrays.

Windows Server 2012 provides Fibre Channel ports within the guest operating system, which allows you to connect to Fibre Channel directly from within virtual machines. This feature protects your investments in Fibre Channel, enables you to virtualize workloads that use direct access to Fibre Channel storage, allows you to cluster guest operating systems over Fibre Channel, and provides an important new storage option for servers hosted in your virtualization infrastructure.

With this Hyper-V virtual Fibre Channel feature, you can connect to Fibre Channel storage from within a virtual machine. This allows you to use your existing Fibre Channel investments to support virtualized workloads.

Support for Fibre Channel in Hyper-V guests also includes support for many related features, such as virtual SANs, live migration, and MPIO.



NEW QUESTION 9

- (Topic 1)

Your network contains an Active Directory forest. The forest contains a single domain named contoso.com. The domain contains four domain controllers. The domain controllers are configured as shown in the following table.

Name	Operating system	Configuration
DC1	Windows Server 2008 R2	Domain naming master Schema master Global catalog
DC2	Windows Server 2012 R2	PDC emulator Global catalog
DC3	Windows Server 2008 R2	Infrastructure master
DC4	Windows Server 2012 R2	RID master Global catalog

All domain controllers are DNS servers.

You plan to deploy a new domain controller named DC5 in the contoso.com domain. You need to identify which domain controller must be online to ensure that DC5 can be promoted successfully to a domain controller. Which domain controller should you identify?

- A. DC1
- B. DC2
- C. DC3
- D. DC4

Answer: D

Explanation:

Relative ID (RID) Master:

Allocates active and standby RID pools to replica domain controllers in the same domain. (corp.contoso.com).

Must be online for newly promoted domain controllers to obtain a local RID pool that is required to advertise or when existing domain controllers have to update their current or standby RID pool allocation.

The RID master is responsible for processing RID pool requests from all domain controllers in a particular domain. When a DC creates a security principal object such as a user or

group, it attaches a unique Security ID (SID) to the object. This SID consists of a domain SID (the same for all SIDs created in a domain), and a relative ID (RID) that is unique for each security principal SID created in a domain. Each DC in a domain is allocated a pool of RIDs that it is allowed to assign to the security principals it creates. When a DC's allocated RID pool falls below a threshold, that DC issues a request for additional RIDs to the domain's RID master. The domain RID master responds to the request by retrieving RIDs from the domain's unallocated RID pool and assigns them to the pool of the requesting DC. At any one time, there can be only one domain controller acting as the RID master in the domain.



The Infrastructure Master – The purpose of this role is to ensure that cross-domain object references are correctly handled. For example, if you add a user from one domain to a security group from a different domain, the Infrastructure Master makes sure this is done properly. As you can guess however, if your Active Directory deployment has only a single domain, then the Infrastructure Master role does no work at all, and even in a multi-domain environment it is rarely used except when complex user administration tasks are performed, so the machine holding this role doesn't need to have much horsepower at all.

NEW QUESTION 10

- (Topic 1)

Your network contains an Active Directory domain named contoso.com. The domain contains a server named Server1. Server1 runs Windows Server 2012 R2.

You create a group Managed Service Account named gservice1.

You need to configure a service named Service1 to run as the gservice1 account. How should you configure Service1?

- A. From the Services Console, configure the recovery settings
- B. From a command prompt, run sc.exe and specify the config parameter
- C. From Windows PowerShell, run Set-Service and specify the -PassThrough parameter
- D. From a command prompt, run sc.exe and specify the sdset parameter

Answer: B

Explanation:

Sc config, Modifies the value of a service's entries in the registry and in the Service Control Manager database.

obj= {<AccountName> | <ObjectName>}

Specifies a name of an account in which a service will run, or specifies a name of the Windows driver object in which the driver will run. The default setting is LocalSystem. password= <Password>

Specifies a password. This is required if an account other than the LocalSystem account is used.

NEW QUESTION 10

- (Topic 1)

Your network contains an Active Directory forest named contoso.com. The forest contains a single domain. The domain contains two domain controllers named DC1 and DC2 that run Windows Server 2012 R2.

The domain contains a user named User1 and a global security group named Group1. You reconfigure DC2 as a member server in the domain.

You need to add DC2 as the first domain controller in a new domain in the forest. Which cmdlet should you run?

- A. Add-AdPrincipalGroupMembership
- B. Install-AddsDomainController
- C. Install WindowsFeature
- D. Install AddsDomain
- E. Rename-AdObject
- F. Set AdAccountControl
- G. Set-AdGroup
- H. Set-User

Answer: C

Explanation:

Since a member server does not have Active Directory Domain Services installed, you must install this role before you can configure the new Domain Controller (which would require you to run Install-ADDSForest).

NEW QUESTION 15

- (Topic 1)

Your network contains a server named Server1 that runs Windows Server 2012 R2. Server1 has the Hyper-V server role installed. Server1 hosts four virtual machines named VM1, VM2, VM3, and VM4. Server1 is configured as shown in the following table.

Hardware component	Configuration
Processor	Eight quad-core CPUs that have non-uniform memory access (NUMA)
Memory	32 GB of RAM
Disk	Two local 4-TB disks
Network	Eight network adapters VMQ-supported PCI-SIG-supported

You install Windows Server 2012 R2 on VM2 by using Windows Deployment Services (WDS).

You need to ensure that the next time VM2 restarts, you can connect to the WDS server by using PXE.

Which virtual machine setting should you configure for VM2?

- A. NUMA topology
- B. Resource control
- C. resource metering
- D. virtual Machine Chimney
- E. The VLAN ID
- F. Processor Compatibility
- G. The startup order
- H. Automatic Start Action
- I. Integration Services
- J. Port mirroring
- K. Single-root I/O virtualization

Answer: G

Explanation:

Configure the BIOS of the computer to enable PXE boot, and set the boot order so that it is booting from the network is first.

References: [http://technet.microsoft.com/en-us/library/cc766320\(v=ws.10\).aspx](http://technet.microsoft.com/en-us/library/cc766320(v=ws.10).aspx) Exam Ref 70-410, Installing and Configuring Windows Server 2012 R2, Chapter 3: Configure Hyper-V, Objective 3.1: Create and Configure virtual machine settings, p.144 Training Guide: Installing and Configuring Windows Server 2012 R2: Chapter 7: Hyper-V Virtualization, Lesson 2: Deploying and configuring virtual machines, p.335

NEW QUESTION 18

- (Topic 1)

Your network contains an Active Directory forest. The forest functional level is Windows Server 2012 R2. The forest contains a single domain. The domain contains a member server named Server1. Server1 runs windows Server 2012 R2.

You purchase a network scanner named Scanner1 that supports Web Services on Devices (WSD).

You need to share the network scanner on Server1. Which server role should you install on Server1?

- A. Web Server (IIS)
- B. Fax Server
- C. Print and Document Services
- D. File and Storage Services

Answer: C

Explanation:

The Print and Document Services role allows for the configuration to share printers, scanners and fax devices.

References:

Exam Ref 70-410: Installing and Configuring Windows Server 2012 R2, Chapter 1: Installing and Configuring servers, Objective 1.2: Configure servers, p. 8
<http://technet.microsoft.com/en-us/library/hh831468.aspx>

NEW QUESTION 19

- (Topic 1)

Your network contains an Active Directory forest named contoso.com. The forest contains a single domain. The domain contains two domain controllers named DC1 and DC2 that run Windows Server 2012 R2.

The domain contains a user named User1 and a global security group named Group1. You need to prevent User1 from changing his password. The solution must minimize administrative effort.
Which cmdlet should you run?

- A. Add-AdPrincipalGroupMembership
- B. Install-AddsDomainController
- C. Install-WindowsFeature
- D. Install-AddsDomain
- E. Rename-AdObject
- F. Set-AdAccountControl
- G. Set-AdGroup
- H. Set-User

Answer: F

Explanation:

The Set-ADAccountControlcmdlet modifies the user account control (UAC) values for an Active Directory user or computer account. UAC values are represented by cmdlet parameters.

CannotChangePassword

Modifies the ability of an account to change its password. To disallow password change by the account set this to \$true. This parameter changes the Boolean value of the CannotChangePassword property of an account.

The following example shows how to specify the PasswordCannotChange parameter.

-CannotChangePassword \$false References:

<http://technet.microsoft.com/en-us/library/ee617249.aspx> <http://technet.microsoft.com/en-us/library/hh974723.aspx> <http://technet.microsoft.com/en-us/library/hh974722.aspx>

NEW QUESTION 22

HOTSPOT - (Topic 1)

Your network contains an Active Directory domain named adatum.com. You create an account for a temporary employee named User1.

You need to ensure that User1 can log on to the domain only between 08:00 and 18:00 from a client computer named Computer1.

From which tab should you perform the configuration? To answer, select the appropriate tab in the answer area.

The screenshot shows the 'User1 Properties' dialog box with the 'General' tab selected. The 'Logon Hours' tab is not visible, which is the correct state for the 'Mastered' answer.

- A. Mastered
- B. Not Mastered

Answer: A

Explanation:

The User account properties contains the Logon Hours settings that you can use to change the hours that this selected object can log on to the domain. By default, domain logon is allowed 24 hours a day, 7 days a week. Note that this control does not affect the user's ability to log on locally to a computer using a local computer account instead of a domain account.

To set logon hours

1. Open Active Directory Users and Computers.
2. In the console tree, click Users. Where? Active Directory Users and Computers/domain node/Users Or, click the folder that contains the user account.
3. Right-click the user account, and then click Properties.
4. On the Account tab, click Logon Hours, and then set the permitted or denied logon hours for the user.

Joshua Properties ? x

Published Certificates	Member Of	Password Replication	Dial-in	Object
Security	Environment	Sessions	Remote control	
Remote Desktop Services Profile	COM+	Attribute Editor		
General	Address	Account	Profile	Telephones
Organization				

User logon name:
 @PRACTICE.LOCAL

User logon name (pre-Windows 2000):

Logon Hours... Log On To...

☐ Unlock account

Account options:

- ☐ User must change password at next logon
- ☐ User cannot change password
- ☐ Password never expires
- ☐ Store password using reversible encryption

Account expires:

☒ Never

☐ End of: Tuesday, May 26, 2015

OK Cancel Apply Help

Logon Hours for Joshua x

12 • 2 • 4 • 6 • 8 • 10 • 12 • 2 • 4 • 6 • 8 • 10 • 12

All	Sunday	Monday	Tuesday	Wednesday	Thursday	Friday	Saturday

☒ Logon Permitted
☐ Logon Denied

OK Cancel

Sunday through Saturday from 12:00 AM to 12:00 AM

NEW QUESTION 26

DRAG DROP - (Topic 1)

You have a server named Server1 that runs Windows Server 2012 R2.

You need to perform the following storage configuration tasks on Server1:

? Bring a disk named Disk1 online.

? Defragment a volume named Volume1.

? Remove a disk named Disk2 from a storage pool named Pool1.

Which cmdlet should you use to perform each task?

To answer, drag the appropriate cmdlets to the correct tasks. Each cmdlet may be used once, more than once, or not at all. You may need to drag the split bar between panes or scroll to view content.

Cmdlets	Answer Area
Initialize-Disk	Bring a disk named Disk1 online. Cmdlet
Optimize-Volume	Defragment a volume named Volume1. Cmdlet
Remove-PhysicalDisk	Remove a disk named Disk2 from a storage pool named Pool1. Cmdlet
Repair-Volume	
Set-Disk	
Set-PhysicalDisk	
Set-StoragePool	
Update-Disk	

- A. Mastered
- B. Not Mastered

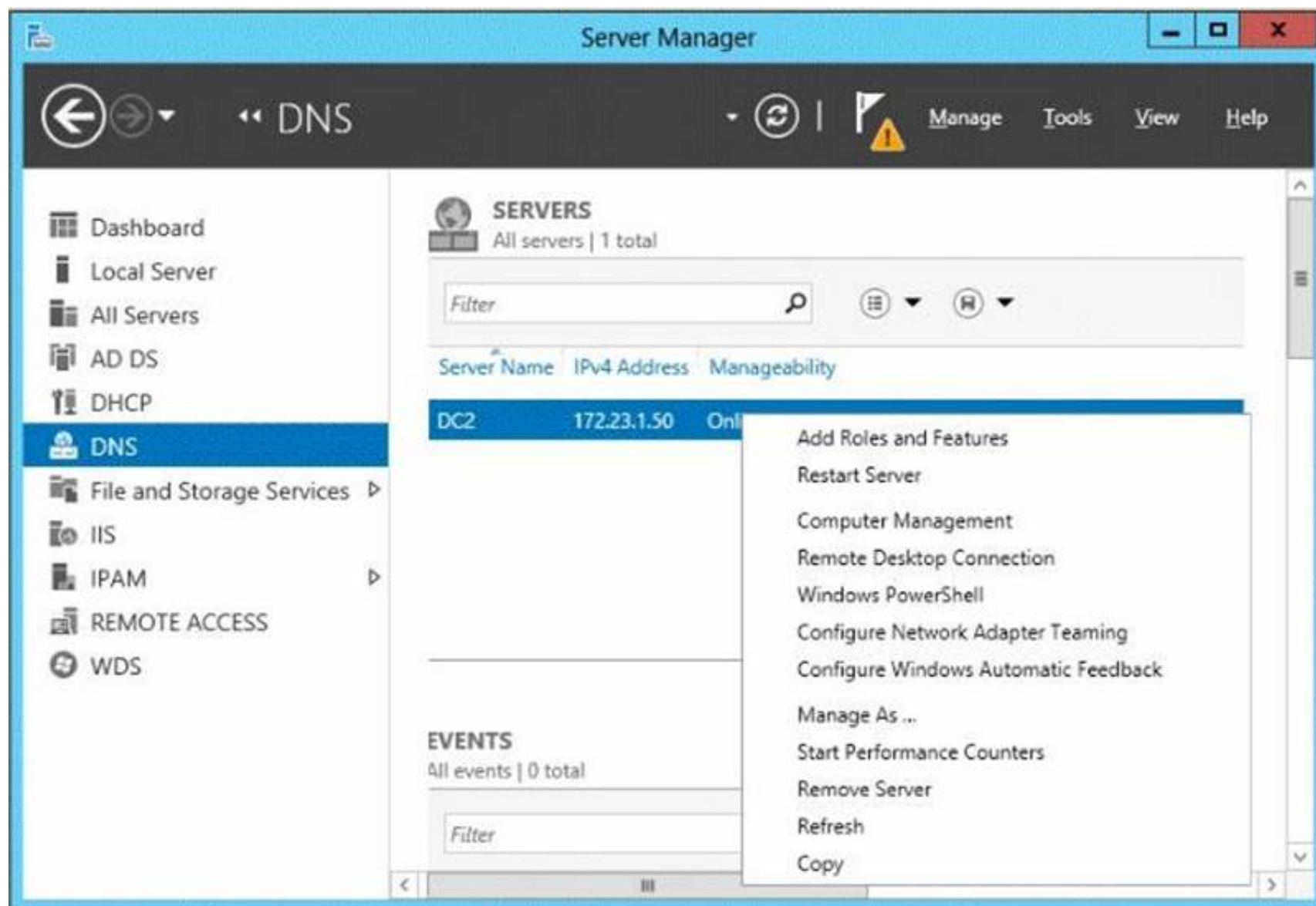
Answer: A

Explanation:

Cmdlets	Answer Area
Initialize-Disk	Bring a disk named Disk1 online. Set-Disk
Optimize-Volume	Defragment a volume named Volume1. Optimize-Volume
Remove-PhysicalDisk	Remove a disk named Disk2 from a storage pool named Pool1. Remove-PhysicalDisk
Repair-Volume	
Set-Disk	
Set-PhysicalDisk	
Set-StoragePool	
Update-Disk	

NEW QUESTION 31

- (Topic 1)
Your network contains an Active Directory domain named contoso.com. The domain contains a member server named Server1 and a domain controller named DC2.All servers run Windows Server 2012 R2. All domain controllers are configured as DNS servers.
On Server1, you open Server Manager and you add DC2 as another server to manage. From Server Manager on Server1, you right-click DC2 as shown in the exhibit. (Click the Exhibit button.)



You need to ensure that when you right-click DC2, you see the option to run DNS Manager.
 What should you do?

- A. On Server1, install the Role Administration Tools.
- B. In the domain, add Server1 to the DNS Admins group.
- C. On DC2 and Server1, run winrmquickconfig.
- D. On DC2, install the Feature Administration Tools.

Answer: A

Explanation:

The Domain Name System (DNS) role is a role that provides a standard method for associating names with numeric Internet addresses. This lets users refer to network computers by using easy-to-remember names instead of a long series of numbers. Windows DNS services can be integrated with DHCP services, eliminating the need to add DNS records as computers are added to the network.

NEW QUESTION 35

- (Topic 1)

Your network contains an Active Directory forest named contoso.com. All domain controllers currently run Windows Server 2008 R2.

You plan to install a new domain controller named DC4 that runs Windows Server 2012 R2.

The new domain controller will have the following configurations:

- ? Schema master
- ? Global catalog server
- ? DNS Server server role
- ? Active Directory Certificate Services server role

You need to identify which configurations cannot be fulfilled by using the Active Directory Domain Services Configuration Wizard.

Which two configurations should you identify? (Each correct answer presents part of the solution. Choose two.)

- A. Install the DNS Server role.
- B. Enable the global catalog server.
- C. Install the Active Directory Certificate Services role.
- D. Transfer the schema master.

Answer: CD

Explanation:

Installation Wizard will automatically install DNS and allows for the option to set it as a global catalog server. ADCS and schema must be done separately.

NEW QUESTION 40

HOTSPOT - (Topic 1)

You have a Hyper-V host named Server1 that runs Windows Server 2012 R2. Server1 hosts 40 virtual machines that run Windows Server 2008 R2. The virtual machines connect to a private virtual switch.

You have a file that you want to copy to all of the virtual machines.

You need to identify to which servers you can copy files by using the Copy-VmFile cmdlet. What command should you run? To answer, select the appropriate options in the answer area.

Answer Area

-ComputerName Server1 |

Get-VIntegrationService -Name | where Enabled -eq \$true

Answer Area

-ComputerName Server1 |

Compare-Vm
 Get-Vm
 Get-VmHost

Get-VIntegrationService -Name | where Enabled -eq \$true

"Data Exchange Service"
 "Guest Service Interface"
 "Heartbeat Service"

- A. Mastered
- B. Not Mastered

Answer: A

Explanation:

Answer Area

-ComputerName Server1 |

Compare-Vm
 Get-Vm |
 Get-VmHost

Get-VIntegrationService -Name | where Enabled -eq \$true

"Data Exchange Service"
 "Guest Service Interface"
 "Heartbeat Service"

NEW QUESTION 45

- (Topic 1)

Your network contains an Active Directory domain named contoso.com. The domain contains a server named Server1. Server1 runs Windows Server 2012 R2 and has the Hyper-V server role installed.

On Server1, you create and start a virtual machine named VM1. VM1 is configured as shown in the following table.

Setting	Configuration
Minimum RAM	2048 MB
Maximum RAM	4096 MB
Disk type	Fixed size
Disk size	100 GB

You need to recommend a solution to minimize the amount of disk space used for the checkpoint of VM1. What should you do before you create the checkpoint?

- A. Run the Resize-VHD cmdlet.
- B. Convert Disk1.vhd to a dynamically expanding disk.
- C. Shut down VM1.
- D. Run the Convert-VHD cmdlet.

Answer: C

Explanation:

Changing between a fixed and dynamic disk type does not alter the size of a SNAPSHOT much at all.

However, since a snapshot is a record of a VMs state at the exact time that the snapshot was taken, shutting down the VM before taking the snapshot prevents the snapshot from having to contain all of the data in RAM (as there is no data in memory when a machine is powered down).

The question states that the solution should minimize the amount of disk space used for the checkpoint of VM1. If the checkpoint is taken while VM1 is running, there will be two attritional files present at the checkpoint location; a .VSV with VM1 saved state files and a

.BIN file which contains VM1's memory contents. If, however, VM1 is shut down first, these files will not be created, thus saving disk space.

In order to convert Disk1.vhd to a dynamically expanding disk, VM1 still have to be shut down.

NEW QUESTION 47

- (Topic 1)

Your network contains an Active Directory forest named contoso.com. The forest contains a single domain. The domain contains two domain controllers named DC1 and DC2 that run Windows Server 2012 R2.

The domain contains a user named User1 and a global security group named Group1. You need to add a new domain controller to the domain.

You install Windows Server 2012 R2 on a new server named DC3. Which cmdlet should you run next?

- A. Add-AdPrincipalGroupMembership
- B. Install-AddsDomainController
- C. Install WindowsFeature
- D. Install AddsDomain
- E. Rename-AdObject
- F. Set-AdAccountControl
- G. Set-AdGroup
- H. Set-User

Answer: C

Explanation:

It is the 2nd step when installing a DC by powershell on a fresh server.

NEW QUESTION 50

- (Topic 1)

You have a Hyper-V host named Server1 that runs Windows Server 2012 R2.

Server1 hosts a virtual machine named VM1 that runs Windows Server 2012 R2. VM1 has several snapshots.

You need to modify the snapshot file location of VM1. What should you do?

- A. Right-click VM1, and then click Export.
- B. Shut down VM1, and then modify the settings of VM1.
- C. Delete the existing snapshots, and then modify the settings of VM1.
- D. Pause VM1, and then modify the settings of VM1.

Answer: C

NEW QUESTION 51

- (Topic 1)

Your network contains an Active Directory domain named contoso.com. The domain contains two servers named Server1 and Server2 that run Windows Server 2012 R2.

You create a security template named Template1 by using the security template snap-in. You need to apply Template1 to Server2.

Which tool should you use?

- A. Security Templates
- B. Computer Management
- C. Security Configuration and Analysis
- D. System Configuration

Answer: C

Explanation:

A security policy is a combination of security settings that affect the security on a computer. You can use your local security policy to edit account policies and local policies on your local computer.

A. Template was already created – Provide standard security option to use in security policies

B. Needs to be applied at the GP level

C. Security templates are inactive until imported into a Group Policy object or the SecurityConfiguration and Analysis

D. Tool to ID windows problems

NEW QUESTION 52

- (Topic 1)

Your network contains an Active Directory domain named adatum.com. The domain contains a server named Server1 that runs Windows Server 2012 R2.

On a server named Core1, you perform a Server Core Installation of Windows Server 2012 R2. You join Core1 to the adatum.com domain.

You need to ensure that you can use Event Viewer on Server1 to view the event logs on Core1.

What should you do on Core1?

- A. Run the Disable NetFirewallRule cmdlet.
- B. Install Remote Server Administration Tools (RSAT).
- C. Install Windows Management Framework.
- D. Run the Enable-Com + Network Access Firewall Rule.

Answer: D

Explanation:

Information regarding IPsec policy changes, etc. can be found in the Event Viewer. Thus you need to enable the NetFirewallRule command. This will allow you to view the event logs.

NEW QUESTION 56

- (Topic 1)

Your network contains an Active Directory domain named contoso.com. The domain contains an Application server named Server1. Server1 runs Windows Server 2012 R2.

Server1 is configured as an FTP server.

Client computers use an FTP Application named App1.exe. App1.exe uses TCP port 21 as the control port and dynamically requests a data port.

On Server1, you create a firewall rule to allow connections on TCP port 21.

You need to configure Server1 to support the client connections from App1.exe.

What should you do?

- A. Run netsh advfirewall set global statefulftp enable.
- B. Create an inbound firewall rule to allow App1.exe.
- C. Create a tunnel connection security rule.
- D. Run Set-NetFirewallRule -DisplayName DynamicFTP -Profile Domain

Answer: A

Explanation:

The netsh firewall context is supplied only for backward compatibility. We recommend that you do not use this context on a computer that is running Windows Vista or a later version of Windows.

In the netsh advfirewall firewall context, the add command only has one variation, the add rule command. Netsh advfirewall set global statefulftp:

Configures how Windows Firewall with Advanced Security handles FTP traffic that uses an initial connection on one port to request a data connection on a different port.

When statefulftp is enabled, the firewall examines the PORT and PASV requests for these other port numbers and then allows the corresponding data connection to the port number that was requested.

Syntax

```
set global statefulftp { enable | disable | notconfigured }
```

Parameters

statefulftp can be set to one of the following values: enable

The firewall tracks the port numbers specified in PORT command requests and in the responses to PASV requests, and then allows the incoming FTP data traffic entering on the requested port number.

disable

This is the default value. The firewall does not track outgoing PORT commands or PASV responses, and so incoming data connections on the PORT or PASV requested port is blocked as an unsolicited incoming connection.

notconfigured

Valid only when netsh is configuring a GPO by using the set store command.

NEW QUESTION 57

- (Topic 1)

You have a server named Server1 that runs Windows Server 2012 R2. Server1 has the Hyper-V server role installed.

An iSCSI SAN is available on the network.

Server1 hosts four virtual machines named VM1, VM2, VM3, and VM4.

You create a LUN on the SAN to host the virtual hard drive files for the virtual machines. You need to create a 3-TB virtual hard disk for VM1 on the LUN. The solution must prevent

VM1 from being paused if the LUN runs out of disk space. Which type of virtual hard disk should you create on the LUN?

- A. Dynamically expanding VHDX
- B. Fixed-size VHDX
- C. Fixed-size VHD
- D. Dynamically expanding VHD

Answer: B

Explanation:

The virtual disk needs to be a VHDX file since it is going to be over 2TB in size and it must be fixed-size so that the space is already taken on the server (that way the server does not run out of space as the volume grows) even if the actual virtual disk does not yet hold that amount of data.

NEW QUESTION 62

HOTSPOT - (Topic 1)

Your network contains an Active Directory domain named contoso.com. All domain controllers run Windows Server 2012 R2.

All servers are configured to enforce AppLocker policies. You install a server named Server1.

On Server1, you install an application named App1.exe in a folder located on C:\App1.

You have two domain groups named Group1 and Group2. A user named User1 is a member of Group1 and Group2.

You create a Group Policy object (GPO) named GPO1. You link GPO1 to contoso.com. You create the executable rules as shown in the exhibit by using the Create Executable

Rules wizard. (Click the Exhibit button.)

Group Policy Management Editor				
File Action View Help				
Action	User	Name	Condition	Exceptions
Allow	Everyone	(Default Rule) All files located in the Program Files folder	Path	
Allow	Everyone	All files located in the Windows folder	Path	
Allow	BUILTIN\Administrators	(Default Rule) All files	Path	
Allow	CONTOSO\Group1	App1.exe	File Hash	
Deny	Everyone	App1.exe	File Hash	
Allow	CONTOSO\Domain Admins	regedit.exe	File Hash	
Deny	CONTOSO\Group2	regedit.exe	File Hash	

To answer, complete each statement according to the information presented in the exhibit. Each correct selection is worth one point.

Answer Area

User1 can run regedit.exe if ...

User1 can run app1.exe if ...

Answer Area

User1 can run regedit.exe if ...

User1 is removed from Group2.
 User1 is added to the Domain Admins group.
 regedit.exe is renamed as registryeditor.exe.

User1 can run app1.exe if ...

app1.exe is renamed as app2.exe.
 the Deny rule for app1.exe is removed.
 an exception is added to the default rules.
 Group1 is added to the Domain Admins group.
 User1 is added to the BUILTIN\Administrators group

- A. Mastered
- B. Not Mastered

Answer: A

Explanation:

Answer Area

User1 can run regedit.exe if ...

User1 is removed from Group2.

User1 is added to the Domain Admins group.

regedit.exe is renamed as registryeditor.exe.

User1 can run app1.exe if ...

app1.exe is renamed as app2.exe.

the Deny rule for app1.exe is removed.

an exception is added to the default rules.

Group1 is added to the Domain Admins group.

User1 is added to the BUILTIN\Administrators group

NEW QUESTION 63

- (Topic 1)
 You have virtual machine named VM1.
 VM1 uses a fixed size virtual hard disk (VHD) named Disk1.vhd. Disk1.vhd is 200 GB. You shut down VM1.
 You need to reduce the size of disk1.vhd.
 Which action should you select from the Edit Virtual Hard Disk Wizard?

- A. Merge
- B. Compact
- C. Shrink
- D. Convert

Answer: C

NEW QUESTION 68

- (Topic 1)
 Your network contains an Active Directory forest named contoso.com.
 The forest contains two domains named contoso.com and child.contoso.com and two sites named Site1 and Site2. The domains and the sites are configured as shown in following table.

Domain controller name	Domain name	Site name	Role
DC1	Contoso.com	Site1	Global catalog RID master PDC emulator
DC2	Contoso.com	Site1	Domain naming master Schema master Infrastructure master
DC3	Child.contoso.com	Site1	Infrastructure master RID master PDC emulator
DC4	Child.contoso.com	Site2	Not applicable

When the link between Site1 and Site2 fails, users fail to log on to Site2. You need to identify what prevents the users in Site2 from logging on to the child.contoso.com domain. What should you identify?

- A. The placement of the global catalog server
- B. The placement of the infrastructure master
- C. The placement of the domain naming master
- D. The placement of the PDC emulator

Answer: D

Explanation:

The exhibit shows that Site2 does not have a PDC emulator. This is important because of the close interaction between the RID operations master role and the PDC emulator role. The PDC emulator processes password changes from earlier-version clients and other domain controllers on a best-effort basis; handles password authentication requests involving passwords that have recently changed and not yet been replicated throughout the domain; and, by default, synchronizes time. If this domain controller cannot connect to the PDC emulator, this domain controller cannot process authentication requests, it may not be able to synchronize time, and password updates cannot be replicated to it.

The PDC emulator master processes password changes from client computers and replicates these updates to all domain controllers throughout the domain. At any time, there can be only one domain controller acting as the PDC emulator master in each domain in the forest.

NEW QUESTION 69

- (Topic 1)

Your network contains an Active Directory forest named contoso.com. The forest contains a single domain. All servers run Windows Server 2012 R2. The domain contains two domain controllers named DC1 and DC2. Both domain controllers are virtual machines on a Hyper-V host.

You plan to create a cloned domain controller named DC3 from an image of DC1. You need to ensure that you can clone DC1.

Which two actions should you perform? (Each correct answer presents part of the solution. Choose two.)

- A. Add the computer account of DC1 to the Cloneable Domain Controllers group.
- B. Create a DCCloneConfig.xml file on DC1.
- C. Add the computer account of DC3 to the Cloneable Domain Controllers group.
- D. Run the Enable-AdOptionalFeaturecmdlet.
- E. Modify the contents of the DefaultDCCloneAllowList.xml file on DC1.

Answer: AB

Explanation:

A. Cloneable Domain Controllers Group There's a new group in town. It's called Cloneable Domain Controllers and you can find it in the Users container.

Membership in this group

dictates whether a DC can or cannot be cloned. This group has some permissions set on the domain head that should not be removed. Removing these permissions will cause cloning to fail. Also, as a best practice, DCs shouldn't be added to the group until you plan to clone and DCs should be removed from the group once cloning is complete. Cloned DCs will also end up in the Cloneable Domain Controllers group.

B. DCCloneConfig.xml

There's one key difference between a cloned DC and a DC that is being restored to a previous snapshot:

DCCloneConfig.XML.

DCCloneConfig.xml is an XML configuration file that contains all of the settings the cloned DC will take when it boots. This includes network settings, DNS, WINS, AD site name, new DC name and more. This file can be generated in a few different ways.

The New-ADDCCloneConfigcmdlet in PowerShell By hand with an XML editor

By editing an existing config file, again with an XML editor.

Reference: Virtual Domain Controller Cloning in Windows Server 2012.

NEW QUESTION 73

- (Topic 1)

You have a server named Server1 that runs Windows Server 2012 R2. You plan to create a storage pool that will contain a new volume.

You need to create a new 600-GB volume by using thin provisioning. The new volume must use the parity layout.

What is the minimum number of 256-GB disks required for the storage pool?

- A. 2
- B. 3
- C. 4
- D. 5

Answer: C

Explanation:

It takes 3 discs (minimum) in order to create a storage pool array with parity. If this array were using fixed provisioning, this would not be enough given the 256MB capacity (since only 2/3rds of 256 X 3 - less than 600 - could be used as actual data with the rest being parity bits), but since this array uses thin provisioning, a 600GB volume could technically be set up on a 20GB disc and it would still show as 600GB. (So, essentially, the question really becomes how many drives it takes in a storage pool to create a parity array.)

References:

<http://technet.microsoft.com/en-us/library/hh831391.aspx> <http://www.ibeast.com/content/tools/RaidCalc/RaidCalc.asp> <http://www.raid-calculator.com/default.aspx>

<https://www.icc-usa.com/raid-calculator>

NEW QUESTION 75

HOTSPOT - (Topic 1)

You have a Hyper-V host named Server1 that runs Windows Server 2008 R2. All of the virtual machines on Server1 use VHDs.

You install the Hyper-V server role on a server named Server2 that runs Windows Server 2012 R2. Server2 has the same hardware configurations as Server1.

You plan to migrate the Hyper-V host from Server1 to Server2 by using the Windows Server Migration Tools.

In the table below, identify what can be migrated by using the Windows Server Migration Tools. Make only one selection in each row. Each correct selection is worth one point.

	Can be migrated	Cannot be migrated
The virtual machine configurations	<input type="radio"/>	<input type="radio"/>
The Hyper-V settings	<input type="radio"/>	<input type="radio"/>
The VHD files that are attached to a virtual machine	<input type="radio"/>	<input type="radio"/>
The virtual floppy disks	<input type="radio"/>	<input type="radio"/>

- A. Mastered
- B. Not Mastered

Answer: A

Explanation:

* The following configurations and settings can be migrated automatically include:
 / Most virtual machine configurations. Virtual machines and their data are moved as part of the migration, but some configurations require manual intervention
 / Hyper-V settings. These include the system-wide settings and the authorization store.
 References:
<http://technet.microsoft.com/en-us/library/ee849855%28v=WS.10%29.aspx>

NEW QUESTION 78

HOTSPOT - (Topic 1)
 You have a DHCP server named Server1 that runs Windows Server 2012 R2.
 On Server1, you run the commands as shown in the exhibit. (Click the Exhibit button.)

```

Administrator: Windows PowerShell
PS C:\> Add-DhcpServerv4Scope -Name Scope1 -StartRange 192.168.10.11 -EndRange 192.168.10.200 -SubnetMask 255.255.255.0
PS C:\> Add-DhcpServerv4Scope -Name Scope2 -StartRange 192.168.15.11 -EndRange 192.168.15.200 -SubnetMask 255.255.255.0
PS C:\> Add-DhcpServerv4Reservation -ScopeId 192.168.10.0 -IPAddress 192.168.10.15 -ClientId AABBCCDDEEFF
PS C:\> Set-DhcpServerv4Scope -ScopeId 192.168.15.0 -StartRange 192.168.15.11 -EndRange 192.168.15.230
PS C:\> Add-DhcpServerv4ExclusionRange -ScopeId 192.168.15.0 -StartRange 192.168.15.21 -EndRange 192.168.15.30
PS C:\> Set-DhcpServerv4OptionValue -DnsServer 172.16.1.250 -ReservedIP 192.168.10.15
PS C:\> Set-DhcpServerv4OptionValue -DnsServer 192.168.15.250 -Router 192.168.15.1 -ScopeId 192.168.15.0
PS C:\> Set-DhcpServerv4OptionValue -DnsServer 192.168.10.250
  
```

To answer, complete each statement according to the information presented in the exhibit. Each correct selection is worth one point.

A computer that has a MAC address of AABBCCDDEEFF will get the DNS server address of ... from Server1 when the computer is connected to the 192.168.15.

Server1 can lease ... addresses on the 192.168.15.0/24 segment.

A computer that has a MAC address of AABBCCDDEEFF will get the DNS server address of ... from Server1 when the computer is connected to the 192.168.15. ...

Server1 can lease ... addresses on the 192.168.15.0/24 segment.

- A. Mastered
 B. Not Mastered

Answer: A

Explanation:

A computer that has a MAC address of AABBCCDDEEFF will get the DNS server address of ... from Server1 when the computer is connected to the 192.168.15. ...

Server1 can lease ... addresses on the 192.168.15.0/24 segment.

NEW QUESTION 80

- (Topic 1)

Your network contains an Active Directory forest named contoso.com. The forest contains two domains named contoso.com and child.contoso.com. The forest contains two domain controllers. The domain controllers are configured as shown in the following table.

Server name	Domain	Role
DC1	Contoso.com	DNS Server Domain controller
DC2	Child.contoso.com	Domain controller

You need to ensure that DC2 can provide authoritative responses for queries to the contoso.com namespace. What should you do?

- A. On DC1, create a delegation.
 B. On DC1, change the replication scope of the contoso.com zone.
 C. On DC2, create a forwarder.
 D. On DC2, modify the Zone Transfers settings.

Answer: B

Explanation:

For DC1 to be able to provide authoritative responses to DNS queries the replication scope should be changed accordingly so that it has the zone data for the contoso.com domain.

NEW QUESTION 83

- (Topic 1)

Your company has a main office and two branch offices. The offices connect to each other by using a WAN link. In the main office, you have a server named Server1 that runs Windows Server 2012 R2. Server1 is configured to use an IPv4 address only. You need to assign an IPv6 address to Server1. The IP address must be private and routable. Which IPv6 address should you assign to Server1?

- A. fe80:ab32:145c::32cc:401b
 B. ff00:3fff:65df:145c:dca8::82a4
 C. 2001:ab32:145c::32cc:401b
 D. fd00:ab32:14:ad88:ac:58:abc2:4

Answer: D

Explanation:

Unique local addresses are IPv6 addresses that are private to an organization in the same way that private addresses—such as 10.x.x.x, 192.168.x.x, or 172.16.0.0 172.31.255.255—can be used on an IPv4 network.

Unique local addresses, therefore, are not routable on the IPv6 Internet in the same way that an address like 10.20.100.55 is not routable on the IPv4 Internet. A unique local address is always structured as follows:

The first 8 bits are always 11111101 in binary format. This means that a unique local address always begins with FD and has a prefix identifier of FD00::/8.

NEW QUESTION 87

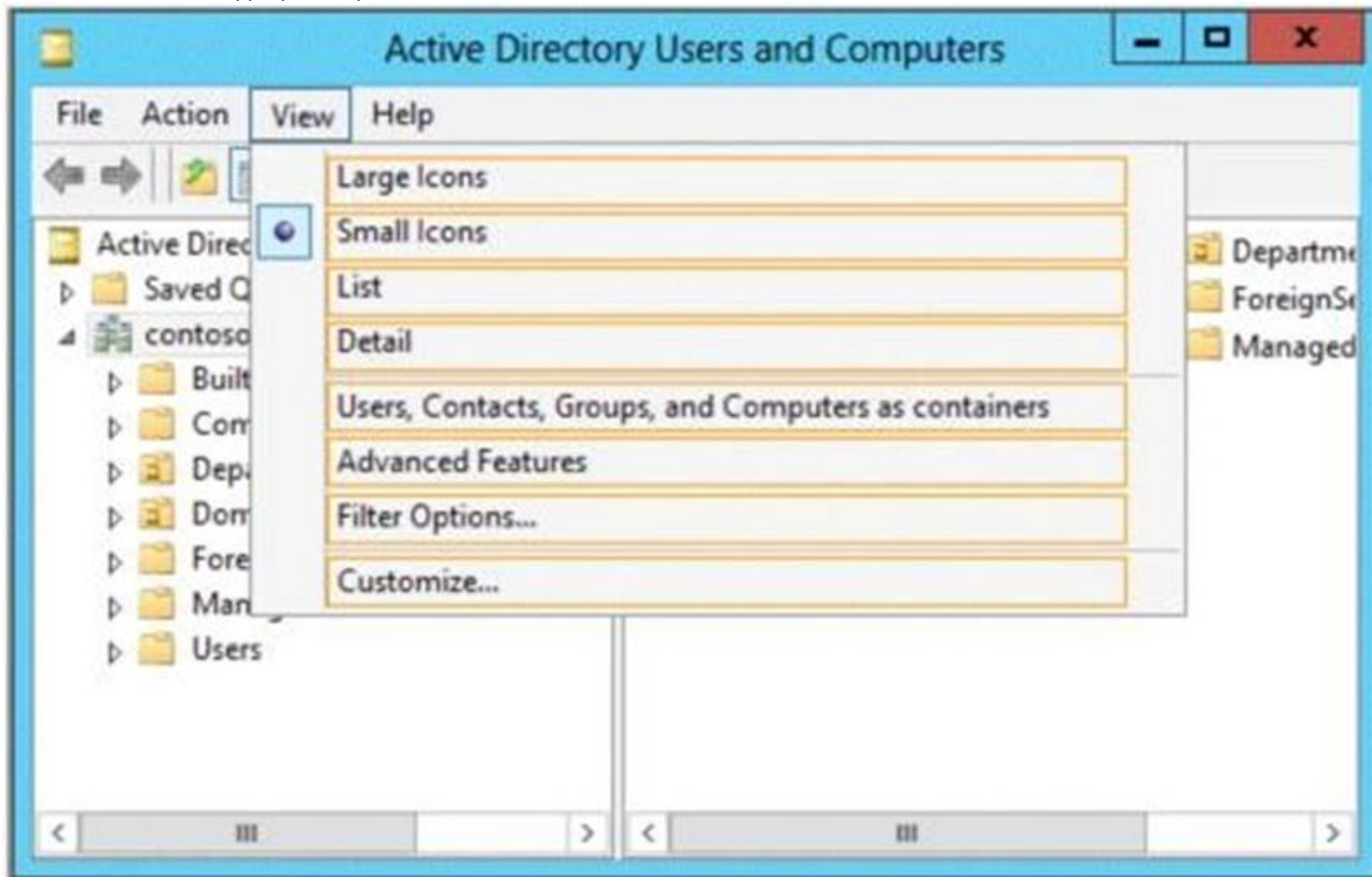
HOTSPOT - (Topic 1)

Your network contains an Active Directory domain named contoso.com. The domain contains a print server named Server1 that runs Windows Server 2012 R2.

You share several printers on Server1.

You need to ensure that you can view the printer objects associated to Server1 in Active Directory Users and Computers. Which option should you select?

To answer, select the appropriate option in the answer area.



- A. Mastered
- B. Not Mastered

Answer: A

Explanation:

You can view printer objects in Active Directory by clicking Users, Groups, and Computers as containers from the View menu in the Active Directory Users and Computers snap-in. By default, printer objects are created under the machine object in which they are shared. After you turn on the Users, Groups, and Computers as containers option, you can see printers by expanding the printer's host computer.

NEW QUESTION 91

HOTSPOT - (Topic 1)

Your network contains an Active Directory domain named contoso.com. All servers run Windows Server 2012 R2.

You need to add a user named User1 to a group named ServerAdmins.

What command should you run? To answer, select the appropriate options in the answer area.

Answer Area

-identity

Answer Area

-identity

Add-AdGroupMember
Add-Member
Set-AdGroup
Set-AdUser

ServerAdmins
User1

ServerAdmins
User1

- A. Mastered
- B. Not Mastered

Answer: A

Explanation:

Answer Area

-identity

Add-AdGroupMember
Add-Member
Set-AdGroup
Set-AdUser

ServerAdmins
User1

ServerAdmins
User1

NEW QUESTION 92
HOTSPOT - (Topic 1)
You have a print server named Server1 that runs Windows Server 2012 R2. On Server1, you create and share a printer named Printer1. The Advanced settings of Printer1 are shown in the Advanced exhibit. (Click the Exhibit button.)

Printer1 Properties

General | Sharing | Ports | **Advanced** | Color Management | Security | Device Settings

☐ Always available
☒ Available from 8:00 AM To 5:00 PM
 Priority: 1
 Driver: Brother Color Type4 Class Driver [v] New Driver...

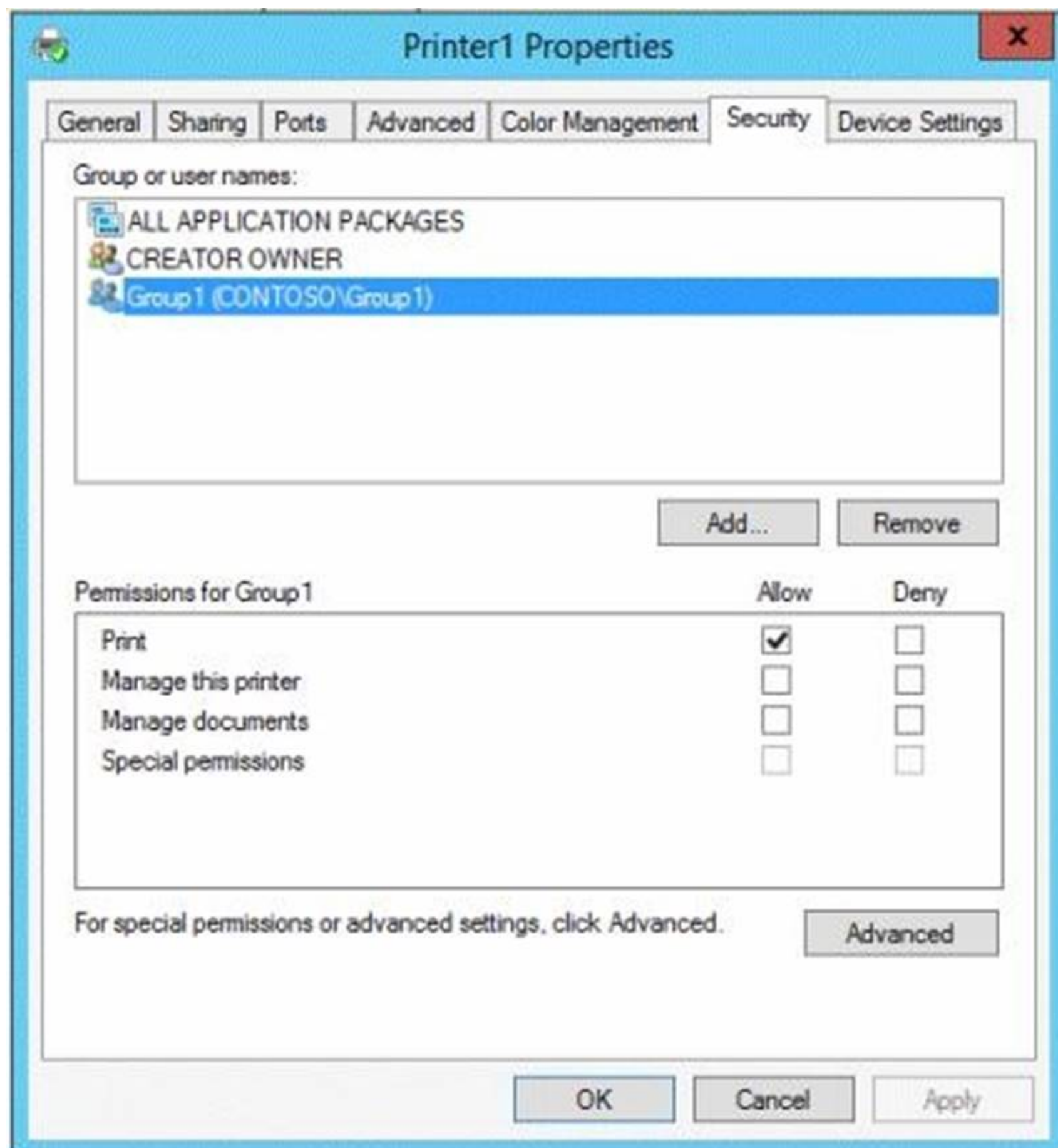
☒ Spool print documents so program finishes printing faster
 ☐ Start printing after last page is spooled
 ☒ Start printing immediately
☐ Print directly to the printer

☐ Hold mismatched documents
☒ Print spooled documents first
☐ Keep printed documents
☒ Enable advanced printing features

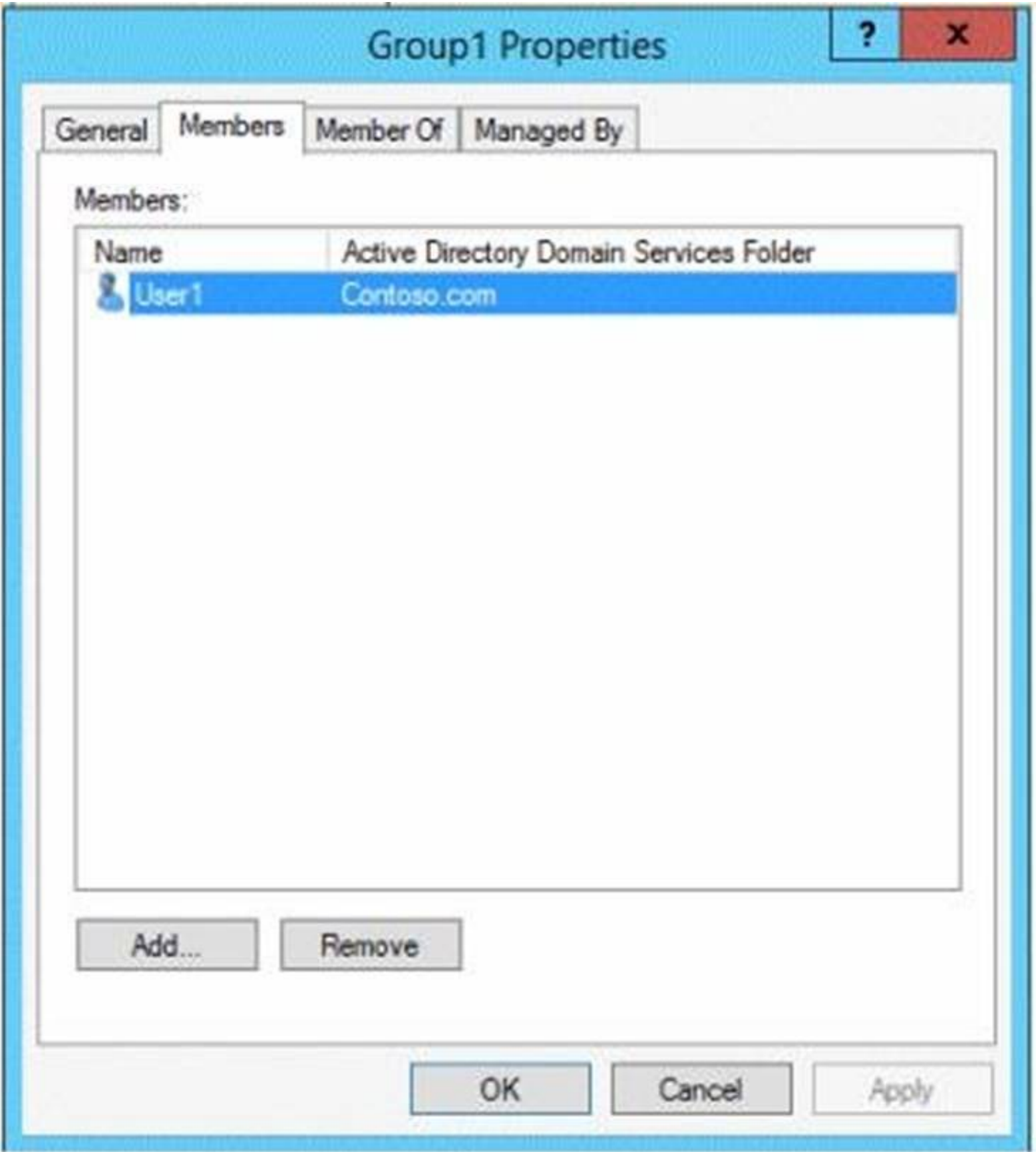
Printing Defaults... Print Processor... Separator Page...

OK Cancel Apply

The Security settings of Printer1 are shown in the Security exhibit. (Click the Exhibit button.)



The Members settings of a group named Group1 are shown in the Group1 exhibit. (Click the Exhibit button.)



Select Yes if the statement can be shown to be true based on the available information; otherwise select No. Each correct selection is worth one point.

	Yes	No
User1 can print on Printer1 on Monday at 18:00.	<input type="radio"/>	<input type="radio"/>
User2 can print on Printer1 on Friday at 14:00.	<input type="radio"/>	<input type="radio"/>
User1 can print on Printer1 on Sunday at 11:00.	<input type="radio"/>	<input type="radio"/>

- A. Mastered
- B. Not Mastered

Answer: A

Explanation:

	Yes	No
User1 can print on Printer1 on Monday at 18:00.	<input type="radio"/>	<input checked="" type="radio"/>
User2 can print on Printer1 on Friday at 14:00.	<input type="radio"/>	<input checked="" type="radio"/>
User1 can print on Printer1 on Sunday at 11:00.	<input checked="" type="radio"/>	<input type="radio"/>

NEW QUESTION 96

HOTSPOT - (Topic 1)

Your network contains an Active Directory forest. The forest contains a single domain named contoso.com.

AppLocker policies are enforced on all member servers.

You view the AppLocker policy applied to the member servers as shown in the exhibit. (Click the Exhibit button.)

Group Policy Management Editor				
File Action View Help				
Action	User	Name	Condition	Exceptions
Deny	CONTOSO\Server Admins	%PROGRAMFILES%\Internet Explorer\iexplore.exe	Path	
Allow	CONTOSO\Domain Admins	%PROGRAMFILES%\Internet Explorer\iexplore.exe	Path	
Allow	Everyone	(Default Rule) All files located in the Program Files folder	Path	
Allow	Everyone	(Default Rule) All files located in the Windows folder	Path	
Deny	CONTOSO\Domain Users	%PROGRAMFILES%\Internet Explorer\iexplore.exe	Path	
Allow	BUILTIN\Administrators	(Default Rule) All files	Path	
Allow	Everyone	Program Files: MICROSOFT® WINDOWS® OPERATING SY...	Publisher	
Allow	Everyone	Program Files: INTERNET EXPLORER signed by O=MICROS...	Publisher	
Allow	Everyone	Program Files: MICROSOFT(R) CONNECTION MANAGER si...	Publisher	

To answer, complete each statement according to the information presented in the exhibit. Each correct selection is worth one point.

Answer Area

... can run Internet Explorer on the servers.

... can run Windows Mail on the servers.

Answer Area

... can run Internet Explorer on the servers.

No one
Everyone
Only local users
Only the members of Domain Admins
Only the members of a group named ServerAdmins

... can run Windows Mail on the servers.

No one
Everyone
Only local users
Only the members of Domain Admins
Only the members of a group named ServerAdmins

- A. Mastered
- B. Not Mastered

Answer: A

Explanation:

Answer Area

... can run Internet Explorer on the servers.

No one
Everyone
Only local users
Only the members of Domain Admins
Only the members of a group named ServerAdmins

... can run Windows Mail on the servers.

No one
Everyone
Only local users
Only the members of Domain Admins
Only the members of a group named ServerAdmins

NEW QUESTION 97

HOTSPOT - (Topic 1)

Your network contains an Active Directory domain named adatum.com. All domain controllers run Windows Server 2012 R2. All client computers run Windows 7. The computer accounts for all of the client computers are located in an organizational unit (OU) named OU1.

An administrator links a Group Policy object (GPO) to OU1. The GPO contains several application control policies.

You discover that the application control policies are not enforced on the client computers. You need to modify the GPO to ensure that the application control policies are enforced on the client computers.

What should you configure in the GPO?

To answer, select the appropriate service in the answer area.

Group Policy Management Editor		
File Action View Help		
Service Name	Startup	Permission
Active Directory Domain Services	Not Defined	Not Defined
Active Directory Web Services	Not Defined	Not Defined
Application Experience	Not Defined	Not Defined
Application Host Helper Service	Not Defined	Not Defined
Application Identity	Not Defined	Not Defined
Application Information	Not Defined	Not Defined
Application Layer Gateway Service	Not Defined	Not Defined
Application Management	Not Defined	Not Defined
ASP.NET State Service	Not Defined	Not Defined
Background Intelligent Transfer Service	Not Defined	Not Defined
Base Filtering Engine	Not Defined	Not Defined
Broker Infrastructure	Not Defined	Not Defined
Certificate Propagation	Not Defined	Not Defined
CNG Key Isolation	Not Defined	Not Defined
COM+ Event System	Not Defined	Not Defined
COM+ System Application	Not Defined	Not Defined
Computer Browser	Not Defined	Not Defined
Credential Manager	Not Defined	Not Defined
Cryptographic Services	Not Defined	Not Defined
Data Deduplication Service	Not Defined	Not Defined

- A. Mastered
- B. Not Mastered

Answer: A

Explanation:

Does AppLocker use any services for its rule enforcement?

Yes, AppLocker uses the Application Identity service (AppIDSvc) for rule enforcement. For AppLocker rules to be enforced, this service must be set to start automatically in the GPO.

Before you can enforce AppLocker policies, you must start the Application Identity service by using the Services snap-in console.

Membership in the local Administrators group, or equivalent, is the minimum required to complete this procedure.

To start the Application Identity service

? Click Start, click Administrative Tools, and then click Services.

? In the Services snap-in console, double-click Application Identity.

? In the Application Identity Properties dialog box, click Automatic in the Startup type list, click Start, and then click OK.

NEW QUESTION 100

- (Topic 2)

You have a Hyper-V host named Server1 that runs Windows Server 2012 R2.

Server1 hosts a virtual machine named VM1 that runs Windows Server 2012 R2. VM1 has several snapshots.

You need to modify the snapshot file location of VM1. What should you do?

- A. Delete the existing snapshots, and then modify the settings of VM1.
- B. Right-click VM1, and then click Move.
- C. Right-click VM1, and then click Export.
- D. Pause VM1, and then modify the settings of VM1.

Answer: A

Explanation:

You will need to navigate to the Hyper-V Management snap-in (C:\ProgramData\Microsoft\Windows\Hyper-V) and from there access the Snapshot file Location tab

where you can change the settings for the VM1 snapshot file location. However, since there are already several snapshots in existence, you will need to delete them first because you will not be able to change the location of the snapshot file while there is an existing snapshot. You need to modify the snapshot file location of VM1.

NEW QUESTION 102

HOTSPOT - (Topic 2)

Your network contains an Active Directory domain named contoso.com. The domain contains servers named Server1 and Server2 that run Windows Server 2012 R2.

You create a windows PowerShell script named Script1.ps1 that contains the following configuration:

```
Configuration ConfigGroup1
{
    Node "Server1"
    {
        Group Group1
        {
            Ensure = "Present"
            Name = "Group1"
            Members = "User1"
        }
    }
}
ConfigGroup1
```

You need to apply the configuration to Server1. The solution must ensure that the configuration on Server1 can be updated by modifying a MOF file on Server2. Which actions should you perform on each server?

To answer, select the appropriate server on which to perform each action in the answer area.

Answer Area

From the Windows PowerShell command prompt, run Script1.ps1.

From the Windows PowerShell command prompt, run the Set-DscLocalConfigurationManager cmdlet.

Install the Windows PowerShell Desired State Configuration Service.

Answer Area

From the Windows PowerShell command prompt, run Script1.ps1.

 Server1
 Server2

From the Windows PowerShell command prompt, run the Set-DscLocalConfigurationManager cmdlet.

 Server1
 Server2

Install the Windows PowerShell Desired State Configuration Service.

 Server1
 Server2

- A. Mastered
- B. Not Mastered

Answer: A

Explanation:

Answer Area

From the Windows PowerShell command prompt, run Script1.ps1.

 Server1
 Server2

From the Windows PowerShell command prompt, run the Set-DscLocalConfigurationManager cmdlet.

 Server1
 Server2

Install the Windows PowerShell Desired State Configuration Service.

 Server1
 Server2

NEW QUESTION 107

HOTSPOT - (Topic 2)

You have a file server named Server1 that runs Windows Server 2012 R2. Server1 contains a folder named Folder1.

Group name	Folder permission	Share permission
Group1	Read and Write	Full Control
Group2	Read	Read
Group3	Read & Execute	Change

A user named User1 is a member of Group1 and Group2. A user named User2 is a member of Group2 and Group3. You need to identify which actions the users can perform when they access the files in Share1. What should you identify?
To answer, select the appropriate actions for each user in the answer area.

Actions	User1	User2
Read the files.	<input type="checkbox"/>	<input type="checkbox"/>
Edit the contents of the files.	<input type="checkbox"/>	<input type="checkbox"/>
Delete files created by other users.	<input type="checkbox"/>	<input type="checkbox"/>
Modify the permissions on the files.	<input type="checkbox"/>	<input type="checkbox"/>
Run executable files.	<input type="checkbox"/>	<input type="checkbox"/>

- A. Mastered
- B. Not Mastered

Answer: A

Explanation:

Actions	User1	User2
Read the files.	<input checked="" type="checkbox"/>	<input checked="" type="checkbox"/>
Edit the contents of the files.	<input checked="" type="checkbox"/>	<input type="checkbox"/>
Delete files created by other users.	<input type="checkbox"/>	<input type="checkbox"/>
Modify the permissions on the files.	<input type="checkbox"/>	<input type="checkbox"/>
Run executable files.	<input type="checkbox"/>	<input checked="" type="checkbox"/>

Your network contains a server named Server1 that runs Windows Server 2012 R2. Server1 has the Hyper-V server role installed. Server1 hosts four virtual machines named VM1, VM2, VM3, and VM4. Server1 is configured as shown in the following table.

Hardware component	Configuration
Processor	Eight quad-core CPUs that have non-uniform memory access (NUMA)
Memory	32 GB of RAM
Disk	Two local 4-TB disks
Network	Eight network adapters VMQ-supported PCI-SIG-supported

You need to configure VM4 to track the CPU, memory, and network usage. What should you configure?

- A. NUMA topology
- B. Resource control
- C. Resource metering
- D. Virtual Machine Chimney
- E. The VLAN ID
- F. Processor Compatibility
- G. The startup order
- H. Automatic Start Action
- I. Integration Services
- J. Port mirroring
- K. Single-root I/O virtualization

Answer: C

Explanation:

Metrics collected for each virtual machine using resource metering:

- ? Average CPU usage, measured in megahertz over a period of time.
- ? Average physical memory usage, measured in megabytes.
- ? Minimum memory usage (lowest amount of physical memory).
- ? Maximum memory usage (highest amount of physical memory).
- ? Maximum amount of disk space allocated to a virtual machine.
- ? Total incoming network traffic, measured in megabytes, for a virtual network adapter.
- ? Total outgoing network traffic, measured in megabytes, for a virtual network adapter

Reference: <http://blogs.technet.com/b/meamcs/archive/2012/05/28/hyper-v-resource-metering-in-windows-server-2012-server-8-beta.aspx>

NEW QUESTION 113

- (Topic 2)

You have a server named Server1 that runs Windows Server 2012 R2.

You try to install the Microsoft .NET Framework 3.5 Features feature on Server1, but the installation fails repeatedly.

You need to ensure that the feature can be installed on Server1. What should you do?

- A. Run the Add-AppxProvisionedPackage cmdlet.
- B. Disable User Account Control (UAC).
- C. Connect Server1 to the Internet.
- D. Remove the .NET Framework 4.5 Features feature.

Answer: C

NEW QUESTION 116

- (Topic 2)

Your network contains an Active Directory domain named contoso.com.

An organizational unit (OU) named OU1 contains user accounts and computer accounts.

A Group Policy object (GPO) named GP1 is linked to the domain. GP1 contains Computer Configuration settings and User Configuration settings.

You need to prevent the User Configuration settings in GP1 from being applied to users. The solution must ensure that the Computer Configuration settings in GP1 are applied to all client computers.

What should you configure?

- A. The GPO Status
- B. The Block Inheritance feature
- C. The Group Policy loopback processing mode
- D. The Enforced setting

Answer: C

Explanation:

A loopback with merge option needs to be used.

NEW QUESTION 117

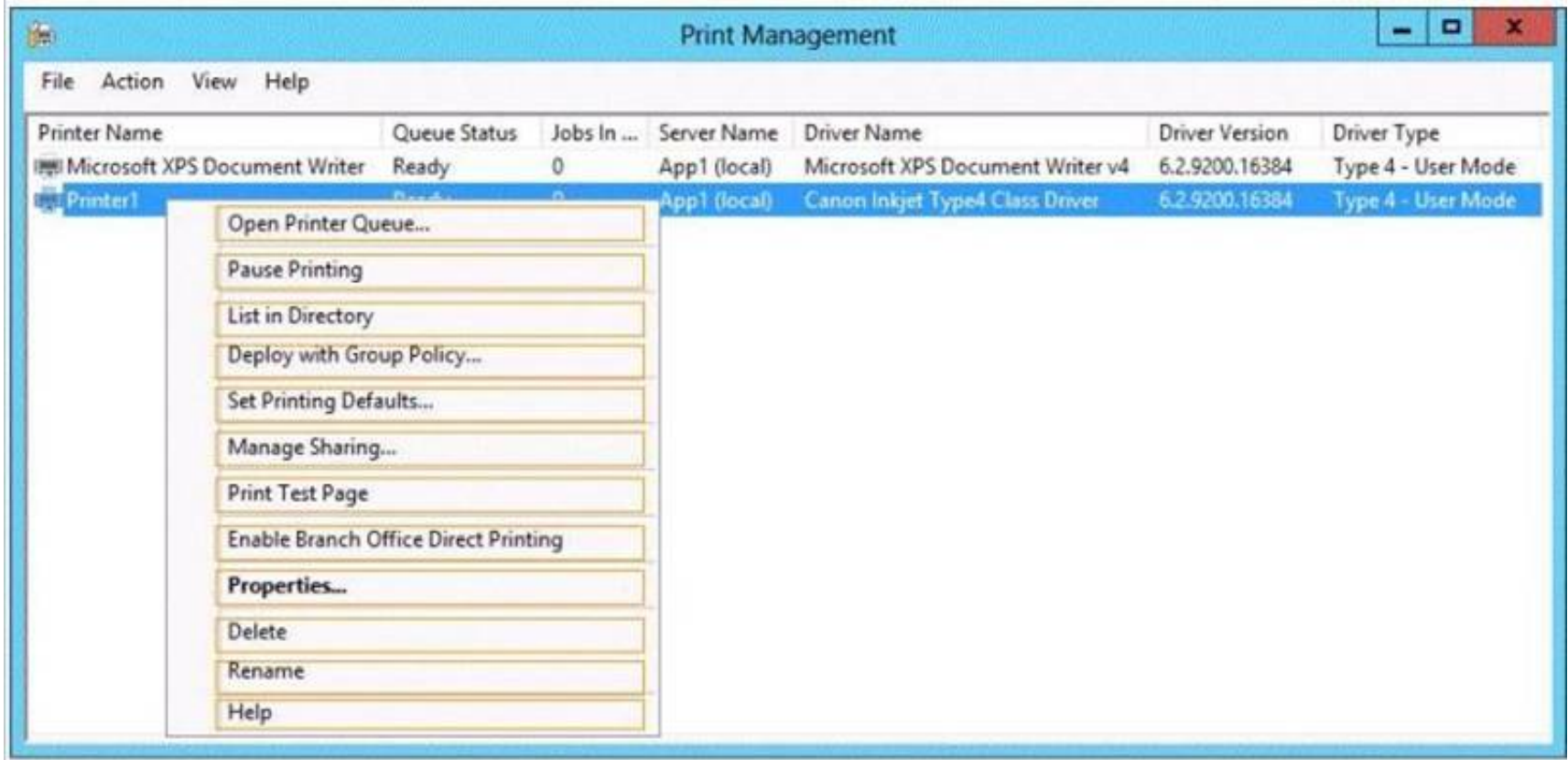
HOTSPOT - (Topic 2)

Your company has a main office and a sales office. The main office has 2,000 users. The sales office has 20 users. All client computers in the sales office run Windows 8.

The sales office contains a print server named App1 that runs Windows Server 2012 R2. App1 has a shared printer named Printer1. Printer1 connects to a network-attached print device.

You plan to connect all of the users in the sales office to Printer1 on App1.

You need to ensure that if App1 fails, the users can continue to print to Printer1. What should you configure on App1? To answer, select the appropriate option in the answer area.



- A. Mastered
- B. Not Mastered

Answer: A

Explanation:

Direct printer will bypass the need to print via the print server.

References:

Exam Ref 70-410: Installing and Configuring Windows Server 2012 R2: Objective 2.3 Configure Print and Document services, Chapter 2: Configure Server roles and Features, p.104, 107.

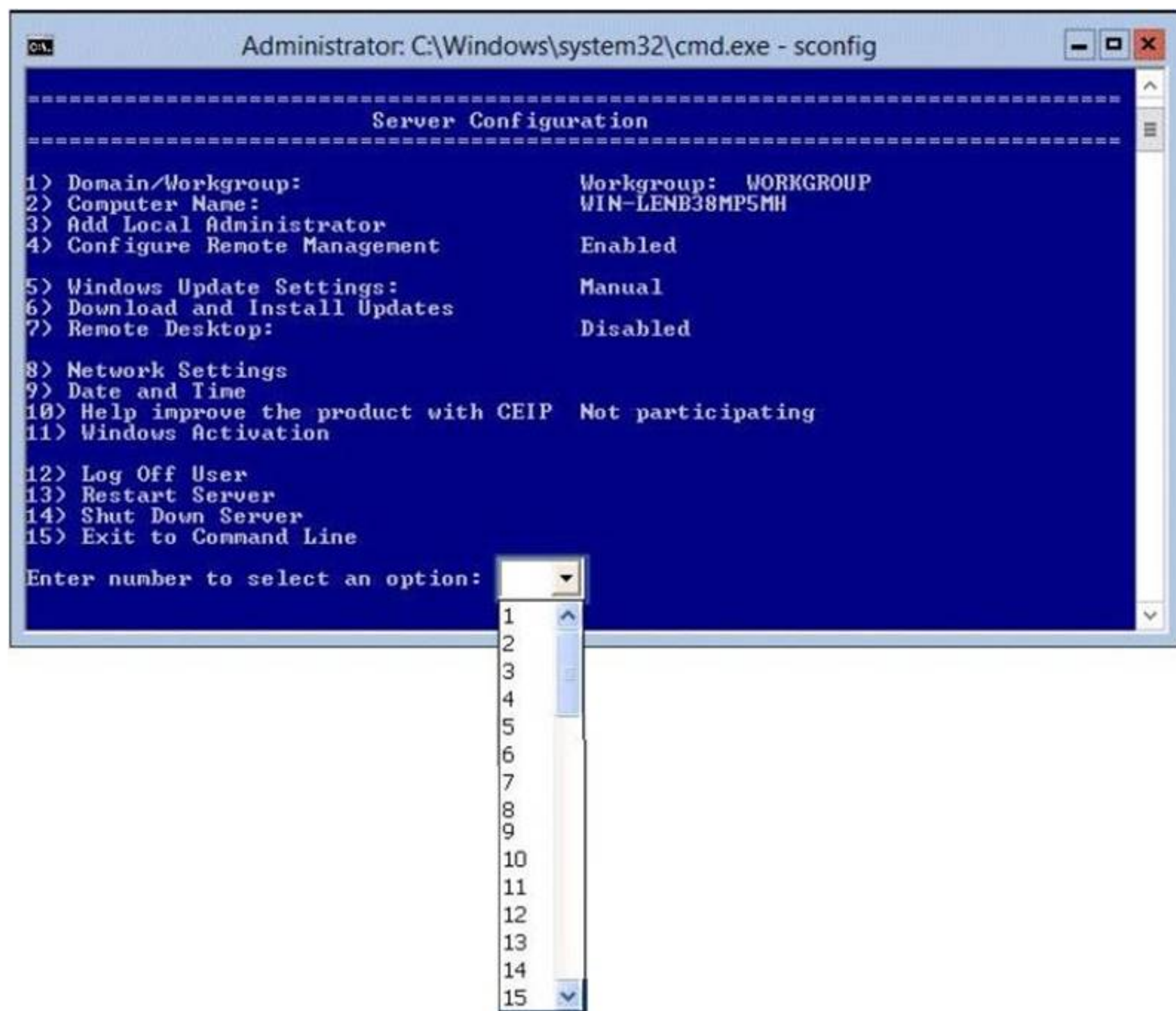
NEW QUESTION 119

HOTSPOT - (Topic 2)

Your network contains an Active Directory domain named contoso.com. The domain contains a server named Server that runs Windows Server 2012 R2.

You perform a Server Core Installation of Windows Server 2012 R2 on a new server. You need to ensure that you can add the new server to Server Manager on Server1.

What should you configure on the new server? To answer, select the appropriate setting in the answer area.



- A. Mastered
- B. Not Mastered

Answer: A

Explanation:

You can add a computer to server manager using IP address. So you need to configure Network Settings. If the server is not member of a domain, you can admin it remotely.

8 - Network Settings

You will require a network connection to the server to manage it from a different server, therefore you need to configure the network settings to enable Remote Management.

NEW QUESTION 123

- (Topic 2)

Your network contains an Active Directory domain named contoso.com. The domain contains a server named Server1 that runs Windows Server 2012 R2 and a server named Server2 that runs Windows Server 2008 R2 Service Pack 1 (SP1). Both servers are member servers.

On Server2, you install all of the software required to ensure that Server2 can be managed remotely from Server Manager.

You need to ensure that you can manage Server2 from Server1 by using Server Manager. Which two tasks should you perform on Server2? (Each correct answer presents part of the solution. Choose two.)

- A. Run the systempropertiesremot
- B. execommand.
- C. Run the Fn timer cmdlet.
- D. Run the Enable-PsSessionConfigurationcmdlet.
- E. Run the Configure-SMRemoting.ps1script.
- F. Run the Set-ExecutionPolicycmdlet.

Answer: DE

Explanation:

The output of this command indicates whether Server Manager Remoting is enabled or disabled on the server. To configure Server Manager remote management by using Windows PowerShell

On the computer that you want to manage remotely, open a Windows PowerShell session with elevated user rights. To do this, click Start, click All Programs, click Accessories, click Windows PowerShell, right-click the Windows PowerShell shortcut, and then click Run as administrator.

In the Windows PowerShell session, type the following, and then press Enter. Set-ExecutionPolicy -ExecutionPolicyRemoteSigned

Type the following, and then press Enter to enable all required firewall rule exceptions.

Configure-SMRemoting.ps1 -force -enable.

NEW QUESTION 124

- (Topic 2)

Your network contains an Active Directory forest named contoso.com. The forest contains five domains. All domain controllers run Windows Server 2012 R2. The contoso.com domain contains two user accounts named Admin1 and Admin2.

You need to ensure that Admin1 and Admin2 can configure hardware and services on all of the member servers in the forest. The solution must minimize the number of privileges granted to Admin1 and Admin2.

Which built-in groups should you use?

- A. Administrators local groups
- B. Administrators domain local groups
- C. Domain Admins global groups
- D. Server Operators global groups

Answer: A

NEW QUESTION 127

- (Topic 2)

You have a server named Core1 that has a Server Core Installation of Windows Server 2012 R2.

Core1 has the Hyper-V server role installed. Core1 has two network adapters from different third-party hardware vendors.

You need to configure network traffic failover to prevent connectivity loss if a network adapter fails.

What should you use?

- A. New-NetSwitchTeam
- B. Install-Feature
- C. Add-NetSwitchTeamMember
- D. Netsh.exe

Answer: A

NEW QUESTION 132

- (Topic 2)

Your network contains a production Active Directory forest named contoso.com and a test Active Directory forest named contoso.test. A trust relationship does not exist between the forests.

In the contoso.test domain, you create a backup of a Group Policy object (GPO) named GPO1.

You transfer the backup of GPO1 to a domain controller in the contoso.com domain. You need to create a GPO in contoso.com based on the settings of GPO1. You must achieve this goal by using the minimum amount of Administrative effort.

What should you do?

- A. From Windows PowerShell, run the Get-GPO cmdlet and the Copy-GPO cmdlet.
- B. From Windows PowerShell, run the New-GPO cmdlet and the Import-GPO cmdlet.
- C. From Group Policy Management, create a new starter GP
- D. Right-click the new starter GPO, and then click Restore from Backup.
- E. From Group Policy Management, right-click the Group Policy Objects container, and then click Manage Backups.

Answer: B

Explanation:

A. Copy-GPO requires domain trust / copy from one domain to another domain within the same forest.

B. The Import-GPO cmdlet imports the settings from a GPO backup into a specified target GPO. The target GPO can be in a different domain or forest than that from which the backup was made and it does not have to exist prior to the operation.

C. This would create a starter GPO, not a GPO.

D: You can also restore GPOs. This operation takes a backed-up GPO and restores it to the same domain from which the GPO's original which it was backed up. You cannot restore a GPO from backup into a domain different from the original domain.

The New-GPO cmdlet creates a new GPO with a specified name. By default, the newly created GPO is not linked to a site, domain, or organizational unit (OU).

The Import-GPO cmdlet imports the settings from a GPO backup into a specified target GPO. The target GPO can be in a different domain or forest than that from which the backup was made and it does not have to exist prior to the operation.

The Restore-GPO cmdlet restores a GPO backup to the original domain from which it was saved. If the original domain is not available, or if the GPO no longer exists in the domain, the cmdlet fails.

Since the GPO's original domain is different and there is no trust relationship between forests, you should execute the New-GPO command and import the already existing command into the 'new' domain.

NEW QUESTION 133

- (Topic 2)

Your network contains an Active Directory domain named contoso.com. The domain contains a server named Server1 that runs Windows Server 2012 R2.

Server1 contains a virtual machine named VM1 that runs Windows Server 2012 R2.

You need to ensure that a user named User1 can install Windows features on VM1. The solution must minimize the number of permissions assigned to User1. To which group should you add User1?

- A. Hyper-V Administrators on Server1
- B. Administrators on VM1
- C. Server Operators on Server1
- D. Power Users on VM1

Answer: B

Explanation:

The user has to be an administrator on VM1 to be able to install features.

In Windows Server 2012 R2, the Server Manager console and Windows PowerShell cmdlets for

Server Manager allow installation of roles and features to local or remote servers, or offline virtual hard disks (VHDs).

You can install multiple roles and features on a single remote server or offline VHD in a single Add Roles and Features Wizard or Windows PowerShell session. You must be logged on to a server as an administrator to install or uninstall roles, role services, and features. If you are logged on to the local computer with an account that does not have administrator rights on your target server, right-click the target server in the Servers tile, and then click Manage As to provide an account that has administrator rights. The server on which you want to mount an offline VHD must be added to Server Manager, and you must have Administrator rights on that server.

References:

Training Guide: Installing and Configuring Windows Server 2012 R2, Chapter 10: Implementing Group Policy, p.539

NEW QUESTION 137

- (Topic 2)

Your network contains an Active Directory domain named contoso.com. The domain contains a server named Server1. Server1 runs Windows Server 2012 R2. You plan to create a shared folder. The shared folder will have a quota limit.

You discover that when you run the New Share Wizard, you cannot select the SMB Share

– Advanced option.

You need to ensure that you can use SMB Share – Advanced to create the new share. What should you do on Server1 before you run the New Share Wizard?

- A. Configure the Advanced system settings.
- B. Run the Install-WindowsFeature cmdlet.
- C. Run the Set-SmbShare cmdlet.
- D. Install the Share and Storage Management tool.

Answer: B

Explanation:

Install-WindowsFeature will install one or more Windows Server roles, role services, or features on either the local or a specified remote server that is running Windows Server 2012 R2. This cmdlet is equivalent to and replaces Add-WindowsFeature, the cmdlet that was used to install roles, role services, and features in Windows Server 2008 R2.

NEW QUESTION 140

- (Topic 2)

Your network contains an Active Directory domain named contoso.com. The domain contains a member server named Server 1. Server1 runs Windows Server 2012 R2 and has the DHCP Server server role installed.

You create two IPv4 scopes on Server1. The scopes are configured as shown in the following table.

Scope name	IPv4 scope
Subnet1	192.168.1.0/24
Subnet2	192.168.2.0/24

The DHCP clients in Subnet1 can connect to the client computers in Subnet2 by using an IP address or a FQDN.

You discover that the DHCP clients in Subnet2 can connect to client computers in Subnet1 by using an IP address only.

You need to ensure that the DHCP clients in both subnets can connect to any other DHCP client by using a FQDN.

What should you add?

- A. The 015 DNS Domain Name option to Subnet1
- B. The 015 DNS Domain Name option to Subnet2
- C. The 006 DNS Servers option to Subnet2
- D. The 006 DNS Servers option to Subnet1

Answer: C

Explanation:

References:

<http://technet.microsoft.com/en-us/library/ee941136%28v=WS.10%29.aspx>

Training Guide: Installing and Configuring Windows Server 2012 R2, Chapter 6: Network Administration, p.253

NEW QUESTION 144

- (Topic 2)

Your network contains several servers that run Windows Server 2012 R2 and client computers that run Windows 8.1.

You download several signed Windows PowerShell scripts from the Internet.

You need to run the PowerShell scripts on all of the servers and all of the client computers. What should you modify first?

- A. The environment variables on all of the servers
- B. The execution policy on all of the servers
- C. The execution policy on all of the client computers
- D. The environment variables on all client computers

Answer: C

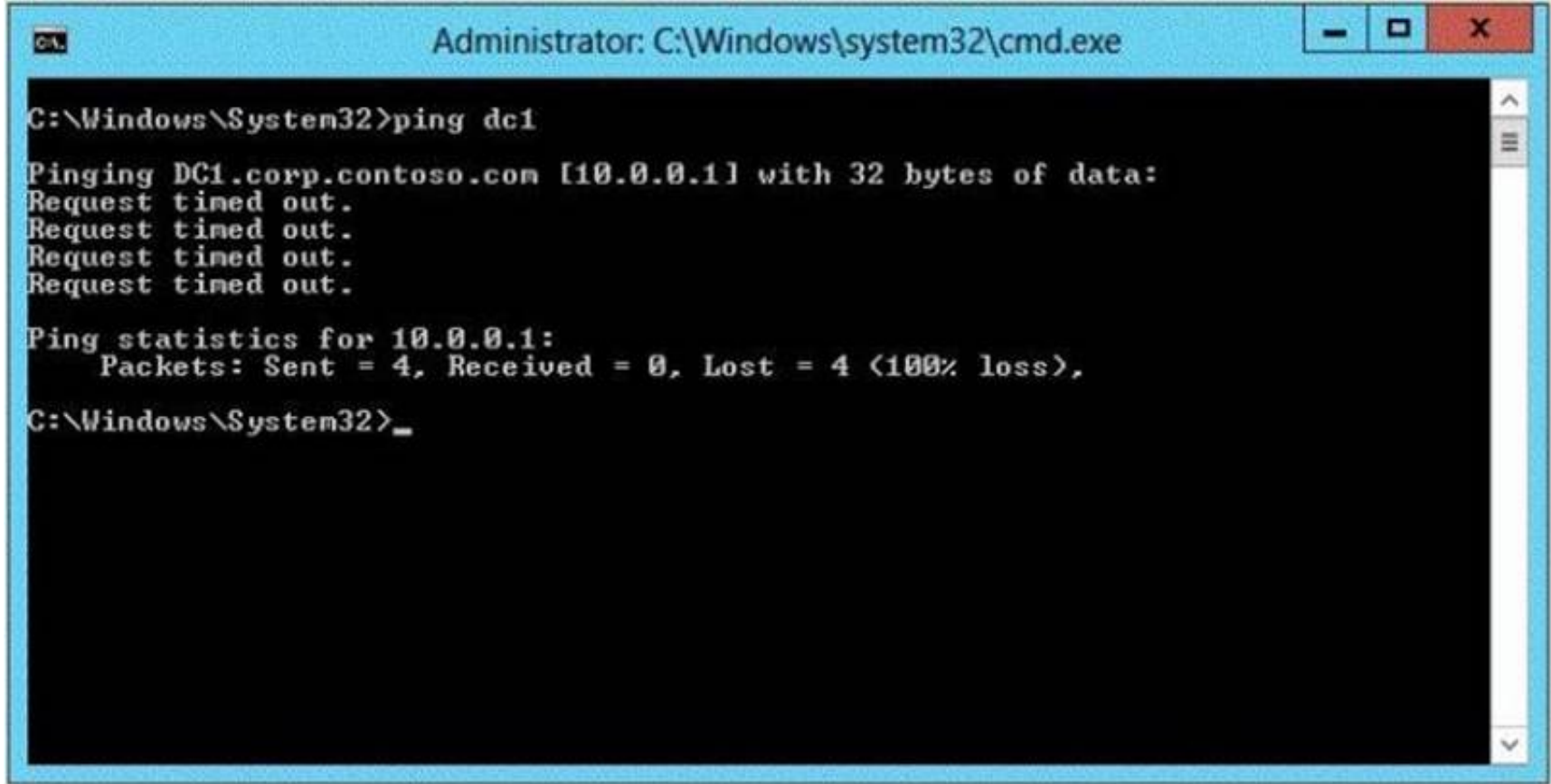
Explanation:

The default execution policy of Windows Server 2012 is RemoteSigned meaning that as long as a valid signature is used on the scripts, they will run. However, the client computers have a default execution policy of restricted meaning that no scripts will run in PowerShell whatsoever, so this would have to be changed before the scripts could be executed on the client computers.

NEW QUESTION 145

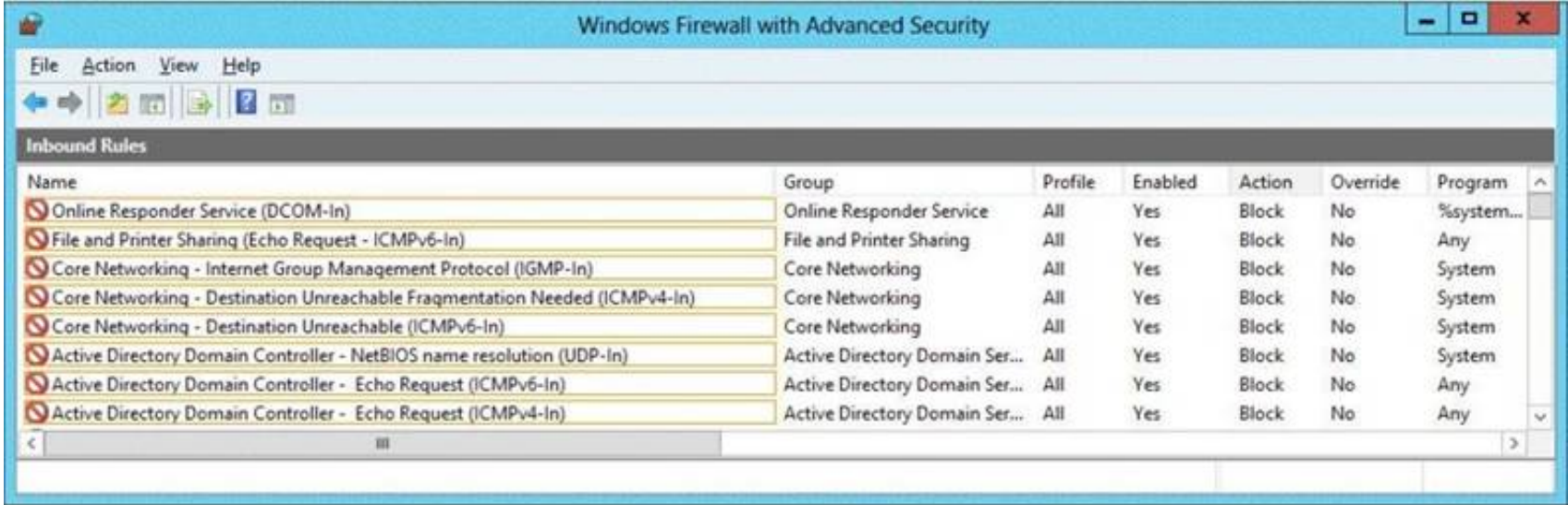
HOTSPOT - (Topic 2)

Your network contains an Active Directory domain named corp.contoso.com. The domain contains a domain controller named DC1. When you run ping dc1.corp.contoso.com, you receive the result as shown in the exhibit. (Click the Exhibit button.)



You need to ensure that DC1 can respond to the Ping command. Which rule should you modify?

To answer, select the appropriate rule in the answer area.



- A. Mastered
- B. Not Mastered

Answer: A

Explanation:

ICMP should have been enabled when ADDS was installed

NEW QUESTION 147

HOTSPOT - (Topic 2)

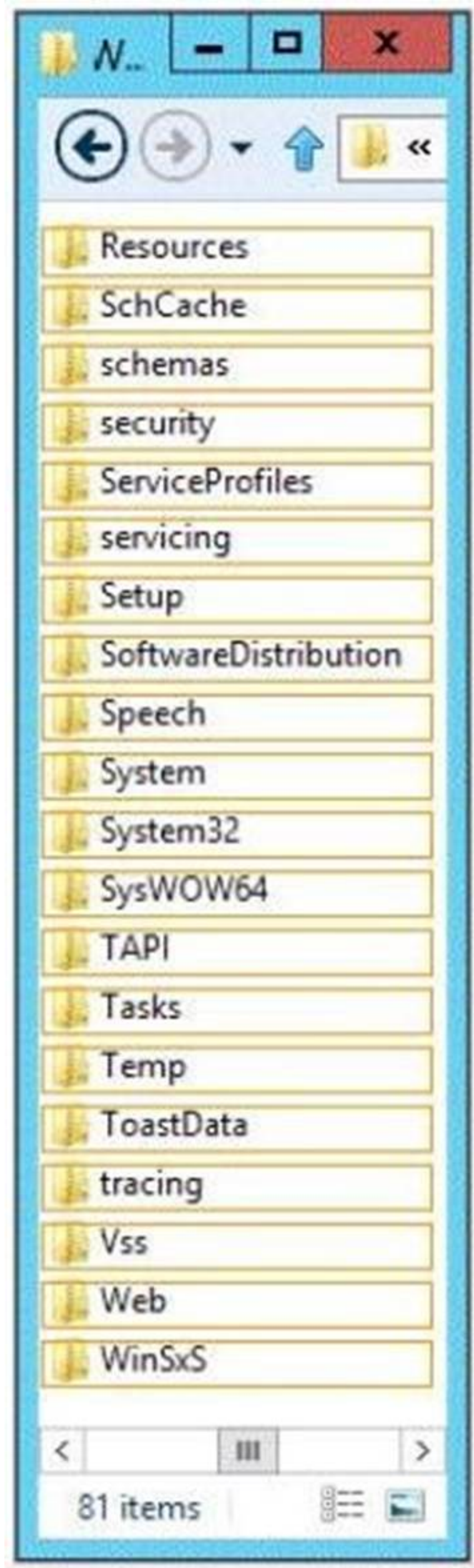
You have a server named DHCP1 that runs Windows Server 2012 R2. DHCP1 does not have access to the Internet.

All roles are removed completely from DHCP1.

You mount a Windows Server 2012 R2 installation image to the C:\Mount folder.

You need to install the DHCP Server server role on DHCP1 by using Server Manager. Which folder should you specify as the alternate path for the source files?

To answer, select the appropriate folder in the answer area.



- A. Mastered
- B. Not Mastered

Answer: A

Explanation:

WinSxS, the side-by-side component store enables administrators to activate any of the features included with Windows Server 2012 R2 without having to supply an installation medium.

NEW QUESTION 151

- (Topic 2)

You have a server named Server1 that runs Windows Server 2012 R2. Server1 has the Print and Document Services server role installed.

Server1 is connected to two identical print devices.

The solution must ensure that if one print device fails, the print jobs will print automatically on the other print device.

What should you do on Server1?

- A. Add two printers and configure the priority of each printer.
- B. Add one printer and configure printer pooling.
- C. Install the Network Load Balancing (NLB) feature, and then add one printer.
- D. Install the Failover Clustering feature, and then add one printer

Answer: B

Explanation:

A. expedite documents that need to be printed immediately

B. A printing pool is one logical printer connected to multiple printers through multiple ports of the print server.

The printer that is idle receives the next document sent to the logical printer. When printing to a printer pool, the spooler will send waiting jobs to alternate ports. If the original or alternate ports are not available

C. NLB for printing is not supported

D. Would need 2 nodes

A printing pool is one logical printer connected to multiple printers through multiple ports of the print server. The printer that is idle receives the next document sent to the logical printer. This is useful in a network with a high volume of printing because it decreases the time users wait for their documents.

A printing pool also simplifies administration because multiple printers can be managed from the same logical printer on a server. If one device within a pool stops printing, the current document is held at that device.

The succeeding documents print to other devices in the pool, while the delayed document waits until the nonfunctioning printer is fixed. Efficient printer pools have the following characteristics:

All printers in the pool are the same model.

Printer ports can be of the same type or mixed (parallel, serial, and network). It is recommended that all printers be in one location. Because it is impossible to predict which printer will receive the document, keep all printers in a pool in a single location. Otherwise, users might have a hard time finding their printed document. [http://technet.microsoft.com/en-us/library/cc757086\(v=ws.10\).aspx](http://technet.microsoft.com/en-us/library/cc757086(v=ws.10).aspx) [http://technet.microsoft.com/en-us/library/cc784619\(v=ws.10\).aspx](http://technet.microsoft.com/en-us/library/cc784619(v=ws.10).aspx) <http://technet.microsoft.com/en-us/library/cc958172.aspx>

You can create a printing pool to automatically distribute print jobs to the next available

printer. A printing pool is one logical printer connected to multiple printers through multiple ports of the print server. The printer that is idle receives the next document sent to the logical printer.

NEW QUESTION 152

- (Topic 2)

You have two servers named Server1 and Server2 that run Windows Server 2012 R2. Server1 and Server2 are part of a workgroup.

On Server1, you add Server2 to Server Manager.

When you attempt to connect to Server2 from Server Manager, you receive the following error message: "Credentials not valid."

You need to ensure that you can manage Server2 from Server1 by using Server Manager on Server1.

What should you do?

- A. On Server 2, run the Configure-SmRemoting cmdlet.
- B. On Server 1, run the Set-NetFirewallRule cmdlet.
- C. On Server 1, run the Set-Item cmdlet.
- D. On Server 2, install the Remote Server Administration Tools (RSAT).

Answer: C

Explanation:

Since they are both workgroup members, server 2 will have to be added to server 1 as a trusted host

NEW QUESTION 157

- (Topic 2)

Your network contains an Active Directory domain named contoso.com. The domain contains a domain controller named DC1 that runs Windows Server 2012 R2.

A user named User1 attempts to log on to DC1, but receives the error message shown in the exhibit. (Click the Exhibit button.)



You need to ensure that User1 can log on to DC1. What should you do?

- A. Add User1 to the Remote Management Users group.
- B. Grant User1 the Allow log on locally user right.
- C. Modify the Logon Workstations setting of the User1 account.
- D. Modify the Account is sensitive and cannot be delegated setting of the User1 account.

Answer: B

Explanation:

Domain controllers, by default, restrict the types of user accounts that have the ability to log on locally.

References:

Exam Ref 70-410: Installing and Configuring Windows Server 2012 R2, Chapter 6: Create and Manage Group Policy, Objective 6.2: Configure Security Policies, p. 321

Exam Ref 70-410: Installing and Configuring Windows Server 2012 R2, Chapter 2: Configure server roles and features, Objective 2.3: Configure servers for remote management, p. 114

[http://technet.microsoft.com/en-us/library/ee957044\(v=ws.10\).aspx](http://technet.microsoft.com/en-us/library/ee957044(v=ws.10).aspx)

NEW QUESTION 162

- (Topic 2)

Your network contains an Active Directory domain named contoso.com. The domain contains a domain controller named Server1 that runs Windows Server 2012 R2.

On Server1, you create a work folder named Work1.

A user named User1 connects to Work1 from a computer named Computer1.

You need to identify the last time the documents in Work1 were synchronized successfully from Computer1.

What should you do?

- A. From Server Manager, review the properties of Computer1.
- B. From Windows PowerShell, run the Get-SyncUserSettingscmdlet.
- C. From Windows PowerShell, run the Get-SyncSharecmdlet.
- D. From Server Manager, review the properties of User1.

Answer: D

NEW QUESTION 165

- (Topic 2)

Your network contains an Active Directory domain named contoso.com.

An organizational unit (OU) named OU1 contains the computer accounts for laptops and desktop computers.

A Group Policy object (GPO) named GP1 is linked to OU1.

You need to ensure that the configuration settings in GP1 are applied only to a user named User1.

What should you do?

- A. Modify the security settings of OU1.
- B. Modify the GPO Status of GP1.
- C. Modify the security settings of GP1.
- D. Configure the WMI Filter of GP1.

Answer: C

Explanation:

References:

Training Guide: Installing and Configuring Windows Server 2012 R2: Chapter 10:

Implementing Group Policy, p. 470, 482 <http://technet.microsoft.com/en-us/library/jj134176> WMI filtering using GPMC

NEW QUESTION 170

- (Topic 2)

Your company has a main office and four branch offices. The main office contains a server named Server1 that runs Windows Server 2012 R2. The IP configuration of each office is configured as shown in the following table.

Office name	Network ID	Router address
Main	10.10.0.0/22	10.10.0.1
Branch1	172.16.18.0/24	172.16.18.1
Branch2	172.16.17.0/24	172.16.17.1
Branch3	172.16.16.0/24	172.16.16.1
Branch4	172.16.19.0/24	172.16.19.1

You need to add a single static route on Server1 to ensure that Server1 can communicate with the hosts on all of the subnets. Which command should you run?

- A. route.exe add -p 10.10.0.0 mask 255.255.252.0 10.10.0.1
- B. route.exe add -p 172.16.16.0 mask 255.255.252.0 10.10.0.1
- C. route.exe add -p 10.10.0.0 mask 255.255.252.0 172.16.0.0
- D. route.exe add -p 172.16.18.0 mask 255.255.252.0 10.10.0.1

Answer: B

Explanation:

These parameters will allow communication with all the hosts.

CIDR prefix-length	Dotted-Decimal	# Individual Addresses	# of Classful Networks
/13	255.248.0.0	512 K	8 Bs or 2048 Cs
/14	255.252.0.0	256 K	4 Bs or 1024 Cs
/15	255.254.0.0	128 K	2 Bs or 512 Cs
/16	255.255.0.0	64 K	1 B or 256 Cs
/17	255.255.128.0	32 K	128 Cs
/18	255.255.192.0	16 K	64 Cs
/19	255.255.224.0	8 K	32 Cs
/20	255.255.240.0	4 K	16 Cs
/21	255.255.248.0	2 K	8 Cs
/22	255.255.252.0	1 K	4 Cs
/23	255.255.254.0	512	2 Cs
/24	255.255.255.0	256	1 C
/25	255.255.255.128	128	1/2 C
/26	255.255.255.192	64	1/4 C
/27	255.255.255.224	32	1/8 C

References:

Exam Ref: 70-410: Installing and Configuring Windows Server 2012 R2, Chapter4: Deploying and configuring core network services, Objective 4.1: Configure IPv4 and IPv6 addressing, p.192, 196

NEW QUESTION 171

- (Topic 2)

You have a server named Data1 that runs a Server Core Installation of Windows Server 2012 R2 Standard.

You need to configure Data1 to run a Server Core Installation of Windows Server 2012 R2 Enterprise. You want to achieve this goal by using the minimum amount of administrative effort.

What should you perform?

- A. a clean installation of Windows Server 2012
- B. an offline servicing by using Dism

- C. an online servicing by using Dism
D. an upgrade installation of Windows Server 2012

Answer: C

Explanation:

References:

Training Guide: Installing and Configuring Windows Server 2012 R2: Chapter 2: Deploying Servers, p. 44

Exam Ref 70-410: Installing and Configuring Windows Server 2012 R2: Chapter 1: Installing and Configuring Servers, p. 19-22

NEW QUESTION 176

- (Topic 2)

Your network contains three servers that run Windows Server 2012 R2. The servers are configured as shown in the following table.

Server name	Server role
Server1	Active Directory Domain Services DHCP Server DNS Server
Server2	Remote Access DHCP Server
Server3	File and Storage Services

Server3 is configured to obtain an IP address automatically.

You need to prevent Server3 from receiving an IP address from Server1. What should you create on Server1?

- A. A reservation
B. A filter
C. A scope option
D. An exclusion

Answer: B

Explanation:

A- For clients that require a constant IP address

B- Filter to exclude MAC address of Server3

C- Range of allowed IP's to be assigned

D- Exclude range of IP's

MAC address based filtering ensure that only a known set of devices in the system are able to obtain an IPAddress from the DHCP Reservation and Exclusion, two incredibly different concepts. An exclusion is an address or range of addresses taken from a DHCP scope that the DHCP server is not allowed to hand out. For example, if you have set a DHCP server to exclude the address range 192.168.0.1-192.168.0.10 then the only way a computer on your network would get an address of 192.168.0.4 would be if you assigned it statically on that machine. This is because DHCP knows NOT to give this range of IP addresses out.

A reservation is a specific IP addresses that is tied to a certain device through its MAC address. For example, if we have a workstation on the network that requires a certain IP address, but we don't want to go through to trouble of assigning it statically, then we can create a reservation for it. So if the MAC address of the NIC on the computer is AA-BB- 00FF-CC-AA and we want it to maintain the IP address of 192.168.0.100 then we would create a DHCP reservation under that particular scope saying that the IP address 192.168.0.100 is reserved only for the MAC address AA-BB-00-FF-CC-AA.

Reference: <http://technet.microsoft.com/en-us/magazine/ff521761.aspx>

NEW QUESTION 177

- (Topic 2)

Your network contains a Windows Server 2012 R2 image named Server12.wim.Server12.wim contains the images shown in the following table.

Index number	Image name
1	Windows Server 2012 R2 Standard Server Core
2	Windows Server 2012 R2 Standard
3	Windows Server 2012 R2 Datacenter Server Core
4	Windows Server 2012 R2 Datacenter

You need to enable the Windows Server Migration Tools feature in the Windows Server 2012 R2 Datacenter image.

You want to achieve this goal by using the minimum amount of administrative effort. Which command should you run first?

- A. `dism.exe /image:c:\Server12.wim /enable-feature /featurename:servermigration`
B. `dism.exe /mount-wim /wimfile:c:\Server12.wim /index:4 /mountdir:c:\mount`
C. `imagex.exe /capture c: c:\Server12.wim "windows server 2012 r2 datacenter"`
D. `imagex.exe /apply c:\Server12.wim 4 c:\`

Answer: B

Explanation:

This command will mount the image before making any changes.

References:

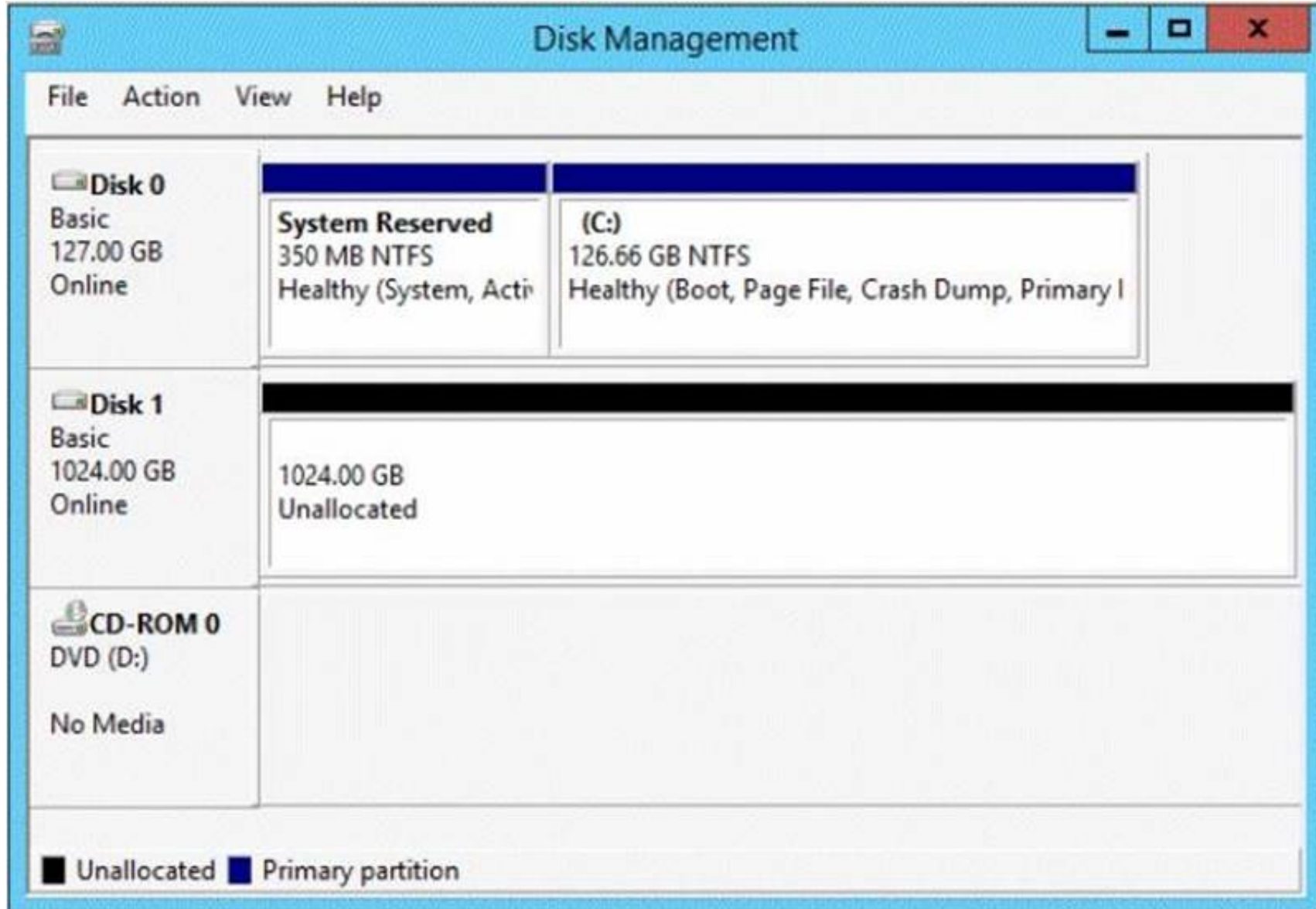
[http://technet.microsoft.com/en-us/library/cc749447\(v=ws.10\).aspx](http://technet.microsoft.com/en-us/library/cc749447(v=ws.10).aspx) [http://technet.microsoft.com/en-us/library/dd744382\(v=ws.10\).aspx](http://technet.microsoft.com/en-us/library/dd744382(v=ws.10).aspx)

NEW QUESTION 179

- (Topic 2)

You have a server named Server1 that runs Windows Server 2012 R2.

You add an additional disk to Server1 as shown in the exhibit. (Click the Exhibit button.)



You need to ensure that users can access the additional disk from drive C. What should you do?

- A. Convert Disk 0 to a dynamic disk and add a mirror.
- B. Create a simple volume on Disk 1 and mount the volume to a folder.
- C. Convert Disk 0 and Disk 1 to dynamic disks and extend a volume.
- D. Convert Disk 1 to a dynamic disk and create a spanned volume.

Answer: B

NEW QUESTION 183

- (Topic 2)

Your network contains an Active Directory domain named contoso.com. All servers run Windows Server 2012 R2. The domain contains a server named Server1.

You open Review Options in the Active Directory Domain Services Configuration Wizard, and then you click View script.

You need to ensure that you can use the script to promote Server1 to a domain controller. Which file extension should you use to save the script?

- A. .bat
- B. .cmd
- C. .ps1
- D. .xml

Answer: C

Explanation:

PowerShell scripts are saved with the extension ".ps1".

From <http://technet.microsoft.com/en-us/library/jj574105.aspx>

The Review Options page in Server Manager also offers an optional View Script button to create a Unicode text file that contains the current ADDS Deployment configuration as a single Windows PowerShell script. This enables you to use the Server Manager graphical interface as a Windows PowerShell deployment studio. Use the Active Directory Domain Services Configuration Wizard to configure options, export the configuration, and then cancel the wizard. This process creates a valid and syntactically correct sample for further modification or direct use.

NEW QUESTION 185

- (Topic 2)

Your network contains an Active Directory domain named contoso.com. The domain contains a server named Server1 that runs Windows Server 2012 R2.

Server1 has the Hyper-V server role installed. Server1 has a virtual switch named RDS Virtual.

You replace all of the network adapters on Server1 with new network adapters that support single-root I/O virtualization (SR-IOV). You need to enable SR-IOV for all of the virtual machines on Server1. Which two actions should you perform? (Each correct answer presents part of the solution. Choose two.)

- A. On each virtual machine, modify the Advanced Features settings of the network adapter.
- B. Modify the settings of the RDS Virtual virtual switch.
- C. On each virtual machine, modify the BIOS settings.
- D. Delete, and then recreate the RDS Virtual virtual switch.
- E. On each virtual machine, modify the Hardware Acceleration settings of the network adapter.

Answer: DE

Explanation:

The first step when allowing a virtual machine to have connectivity to a physical network is to create an external virtual switch using Virtual Switch Manager in Hyper-V Manager. The additional step that is necessary when using SR-IOV is to ensure the checkbox is checked when the virtual switch is being created. It is not possible to change a “non SR-IOV mode” external virtual switch into an “SR-IOV mode” switch. The choice must be made a switch creation time. Thus you should first delete the existing virtual switch and then recreate it. E: Once a virtual switch has been created, the next step is to configure a virtual machine. SR-IOV in Windows Server “8” is supported on x64 editions of Windows “8” as a guest operating system (as in Windows “8” Server, and Windows “8” client x64, but not x86 client). We have rearranged the settings for a virtual machine to introduce sub-nodes under a network adapter, one of which is the hardware acceleration node. At the bottom is a checkbox to enable SR-IOV.

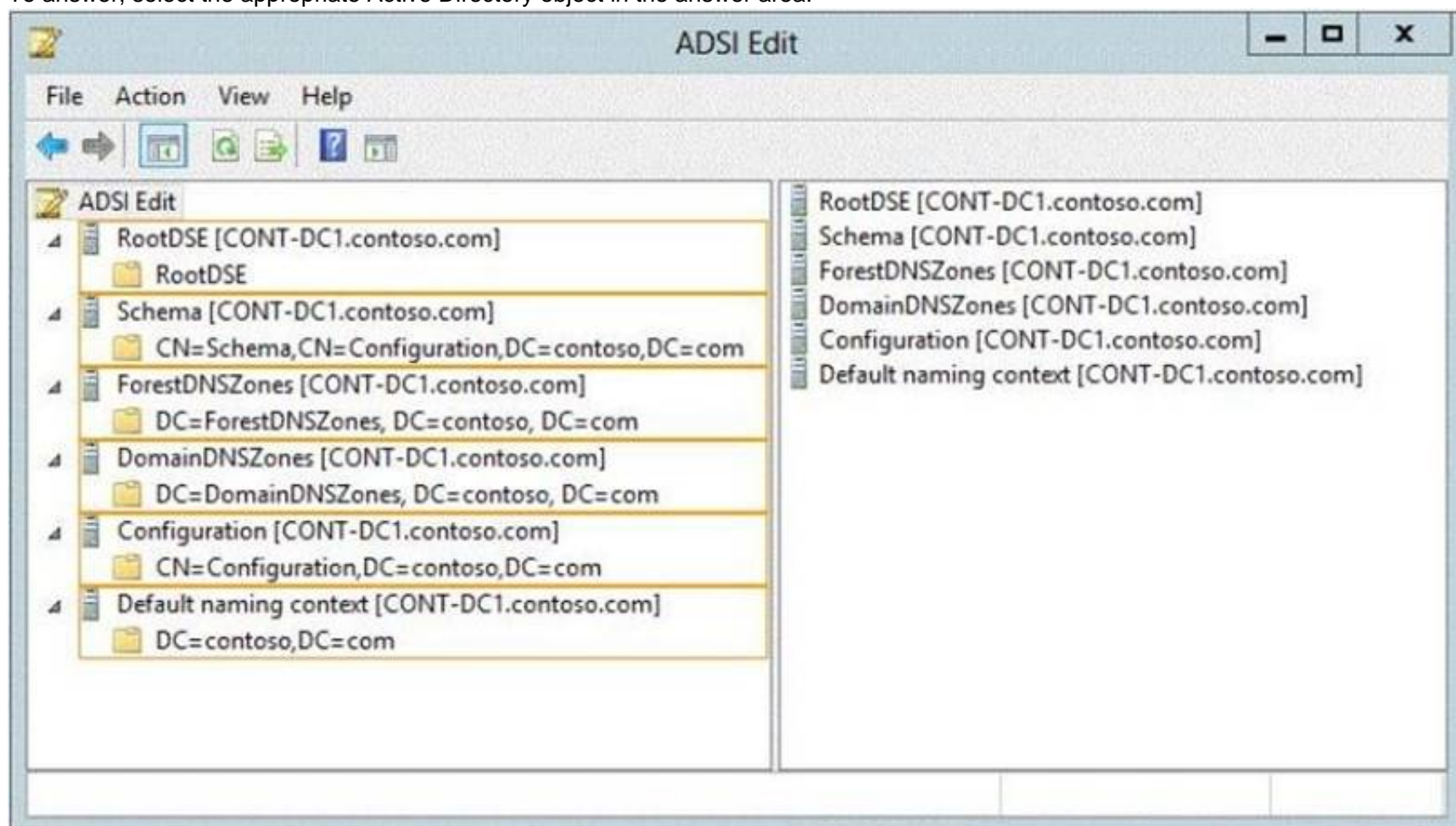
NEW QUESTION 188

HOTSPOT - (Topic 2)

Your network contains an Active Directory domain named contoso.com.

You need to identify whether the Company attribute replicates to the global catalog. Which part of the Active Directory partition should you view?

To answer, select the appropriate Active Directory object in the answer area.



- A. Mastered
- B. Not Mastered

Answer: A

Explanation:

Schema -Contains the Schema container, which stores class and attribute definitions for all existing and possible Active Directory objects in cn=schema,cn=configuration,dc= forestRootDomain. Updates to this container are replicated to all domain controllers in the forest. You can view the contents of the Schema container in the Active Directory Schema console.

An Active Directory Lightweight Directory Services (AD LDS) schema defines, using object classes and attributes, the types of objects and data that can be created and stored in an AD LDS directory. The schema can be extended with new classes and attributes, either by administrators or by the applications themselves. In addition, unneeded schema classes and attributes can be deactivated.

References:

<http://technet.microsoft.com/en-us/library/cc771975.aspx> <http://technet.microsoft.com/en-us/library/cc731547.aspx>

NEW QUESTION 190

HOTSPOT - (Topic 2)

You have two servers that run Windows Server 2012 R2. The servers are configured as shown in the following table.

Server name	Domain name or workgroup	Network profile
Server1	Contoso.com	Domain
Server2	Workgroup	Public

You need to ensure that Server2 can be managed by using Server Manager from Server1. In the table below, identify which actions must be performed on Server1 and Server2. Make only one selection in each row. Each correct selection is worth one point.

	Server1	Server2
Modify the TrustedHosts list.	<input type="radio"/>	<input type="radio"/>
Set the network profile to Private.	<input type="radio"/>	<input type="radio"/>
Override the User Account Control (UAC) restrictions by using the LocalAccountTokenFilterPolicy registry entry.	<input type="radio"/>	<input type="radio"/>

- A. Mastered
- B. Not Mastered

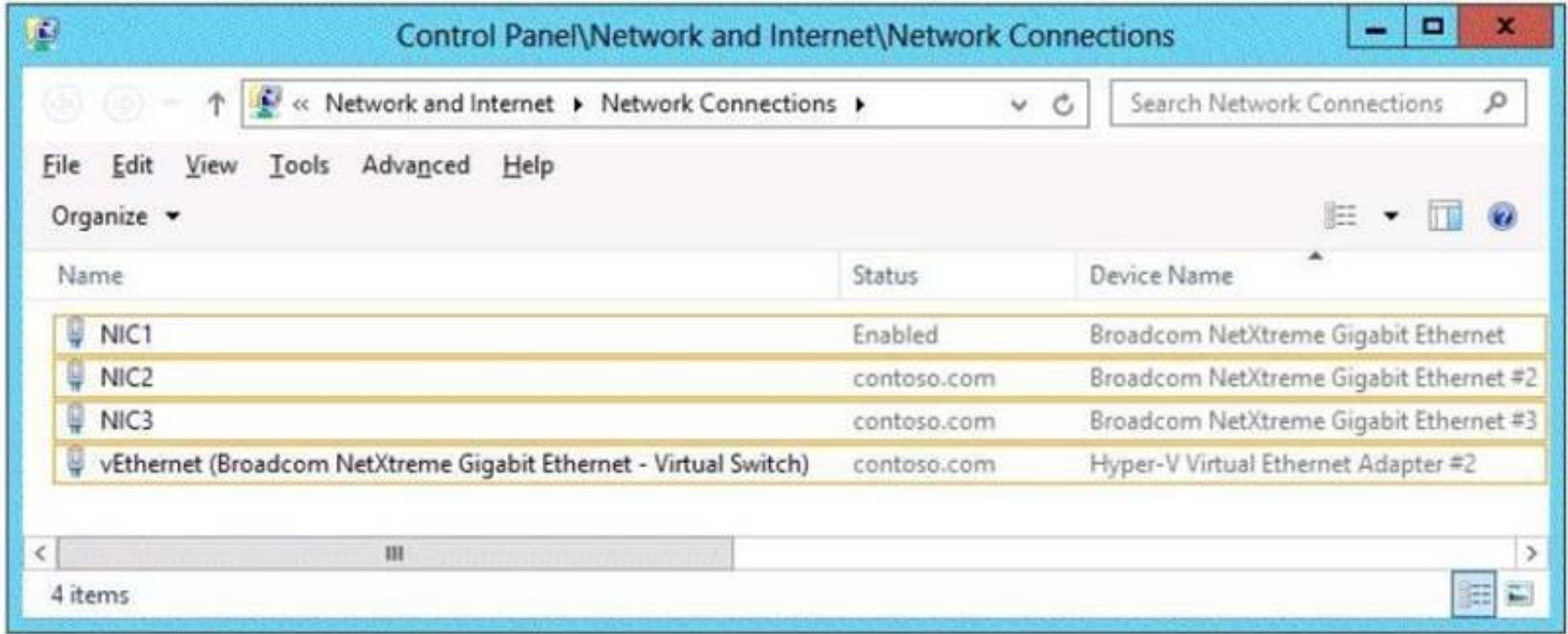
Answer: A

Explanation:

Modify the TrustedHosts list - Server1
Set the network profile to Private- Server2
Override the User Account Control (UAC) restrictions by using the LocalAccountTokenFilterPolicy registry entry - Server 2
On the computer that is running Server Manager, add the workgroup server name to the TrustedHosts list.

NEW QUESTION 194

HOTSPOT - (Topic 2)
You have a server named Server1 that runs Windows Server 2012 R2. Server1 has the Hyper-V server role installed.
You need to implement NIC teaming on Server1.
Which two network connections should you include on the NIC team? (To answer, select the two appropriate network connections in the answer area.)



- A. Mastered
- B. Not Mastered

Answer: A

Explanation:

NIC Teaming requires the presence of a single Ethernet network adapter, which can be used for separating traffic that is using VLANs. All modes that provide fault protection through failover require at least two Ethernet network adapters. NIC1 is already enabled, thus you should include NIC2 and NIC3.

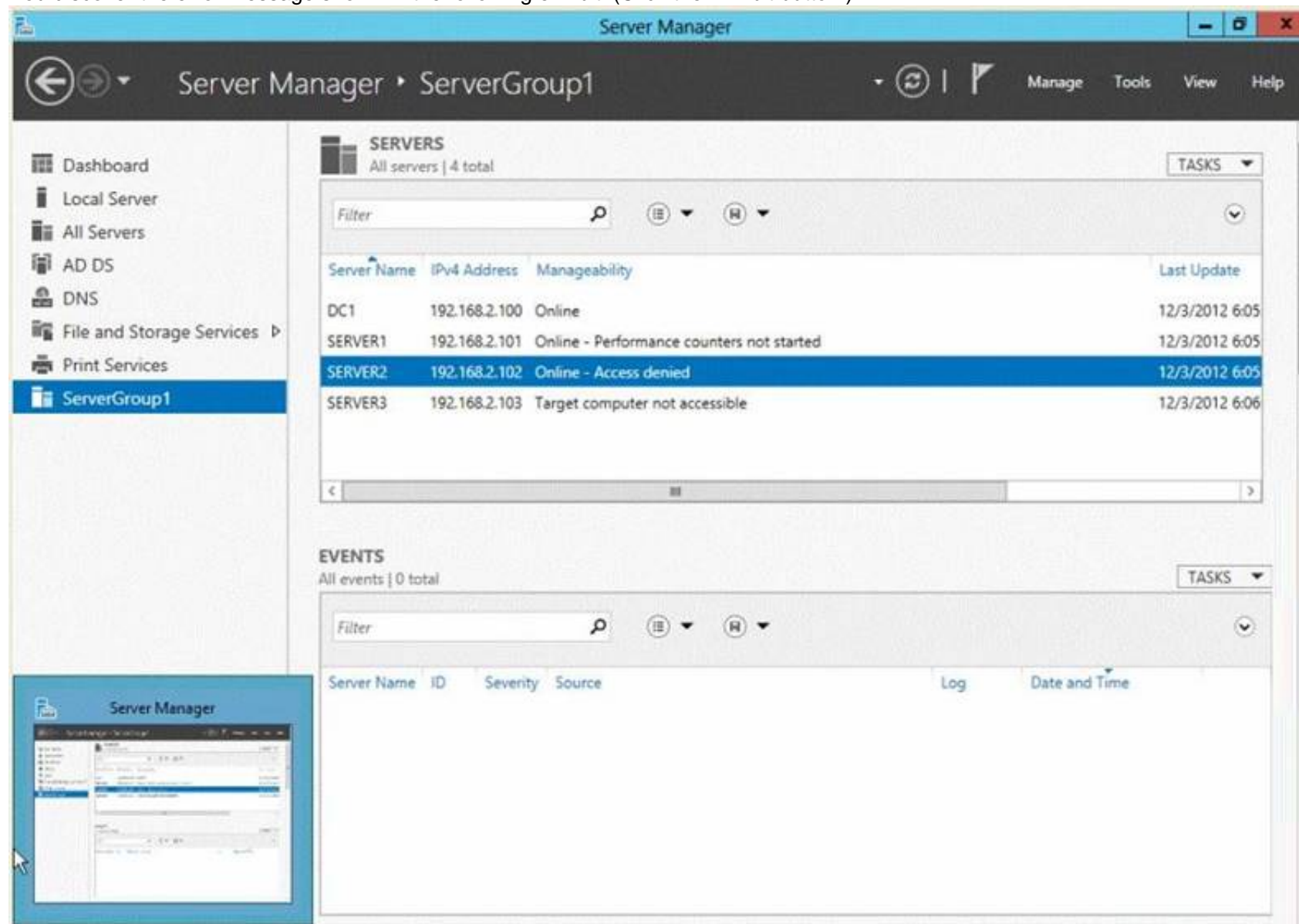
NEW QUESTION 197

- (Topic 2)

Your network contains an Active Directory domain named contoso.com. The domain contains three servers named Server1, Server2, and Server3.

You create a server group named ServerGroup1.

You discover the error message shown in the following exhibit. (Click the Exhibit button.)



You need to ensure that Server2 can be managed remotely by using Server Manager. What should you do?

- A. On DC1, run the Enable-PSSessionConfiguration cmdlet.
- B. On Server2, run the Add-Computer cmdlet.
- C. On Server2 modify the membership of the Remote Management Users group.
- D. From Active Directory Users and Computers, add a computer account named Server2, and then restart Server2.

Answer: C

Explanation:

This is a security issue. To be able to access Server2 remotely through Server Manager the user need to be a member of the Remote Management Users group.

Note:

* Name: BUILTIN\Remote Management Users

Description: A Builtin Local group. Members of this group can access WMI resources over management protocols (such as WS-Management via the Windows Remote Management service). This applies only to WMI namespaces that grant access to the user.

* Enable-ServerManagerStandardUserRemoting

Provides one or more standard, non-Administrator users access to event, service, performance counter, and role and feature inventory data for a server that you are managing by using Server Manager.

Syntax:

Parameter Set: Default

Enable-ServerManagerStandardUserRemoting [-User] <String[]> [-Force] [-Confirm] [- WhatIf]

[<CommonParameters>] Detailed Description

Provides one or more standard, non-Administrator users access to event, service, performance counter, and role and feature inventory data for a server that you are managing, either locally or remotely, by using Server Manager. The cmdlet must be run locally on the server that you are managing by using Server Manager. The cmdlet works by performing the following actions:

? Adds access rights for specified standard users to the root\cimv2 namespace on the local server (for access to role and feature inventory information).

? Adds specified standard users to required user groups (Remote Management Users, Event Log Readers, and Performance Log Readers) that allow remote access to event and performance counter logs on the managed server.

Changes access rights in the Service Control Manager to allow specified standard users remote access to the status of services on the managed server.

Incorrect:

Not A: the Enable-PSSessionConfiguration.This is an advanced cmdlet that is designed to be used by system administrators to manage customized session configurations for their users.

Reference: Enable-ServerManagerStandardUserRemoting

NEW QUESTION 200

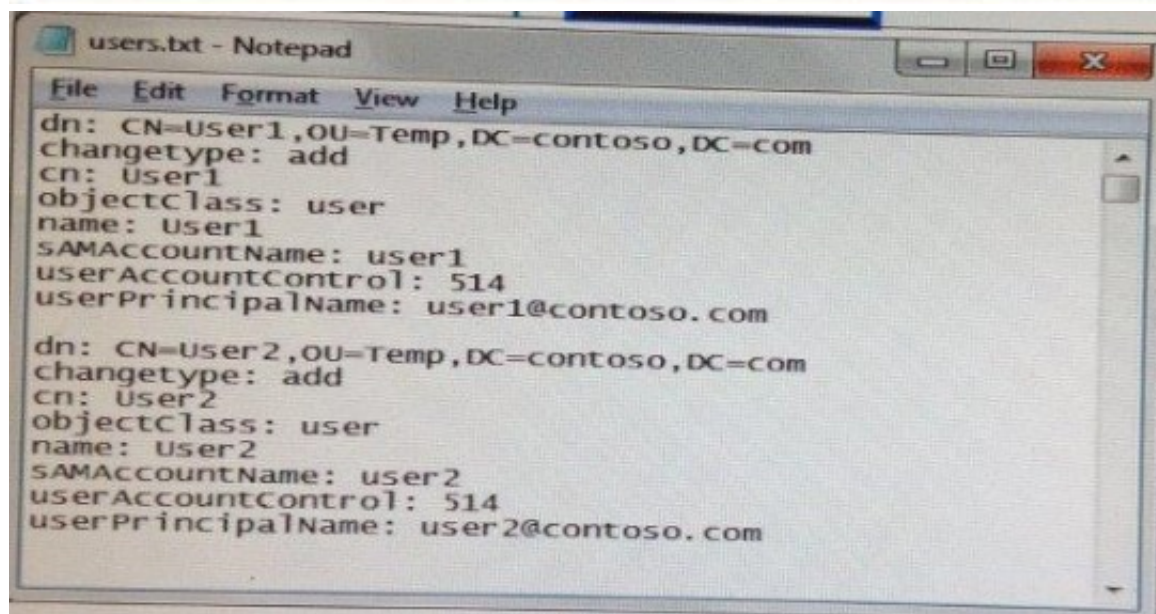
- (Topic 2)

Your network contains an Active Directory domain named contoso.com.

An administrator provides you with a file that contains the information to create user accounts for 200 temporary employees. The file is shown in the exhibit. (Click the Exhibit button.)



```
objectClass,dn,sAMAccountName,userPrincipalName,userAccountControl
user,"CN=User1,CN=Users,DC=contoso,DC=com",User1,User1@contoso.com,514
user,"CN=User2,CN=Users,DC=contoso,DC=com",User2,User1@contoso.com,514
user,"CN=User3,CN=Users,DC=contoso,DC=com",User3,User1@contoso.com,514
user,"CN=User4,CN=Users,DC=contoso,DC=com",User4,User1@contoso.com,514
user,"CN=User5,CN=Users,DC=contoso,DC=com",User5,User1@contoso.com,514
```



```
dn: CN=User1,OU=Temp,DC=contoso,DC=com
changetype: add
cn: User1
objectClass: user
name: User1
sAMAccountName: user1
userAccountControl: 514
userPrincipalName: user1@contoso.com

dn: CN=User2,OU=Temp,DC=contoso,DC=com
changetype: add
cn: User2
objectClass: user
name: User2
sAMAccountName: user2
userAccountControl: 514
userPrincipalName: user2@contoso.com
```

You need to automate the creation of the user accounts. You must achieve this goal by using the minimum amount of administrative effort. Which tool should you use?

- A. Ldifde
- B. csvde
- C. Dsadd
- D. Net user

Answer: B

Explanation:

csvde – Imports and exports data from Active Directory Domain Services (AD DS) using files that store data in the comma-separated value (CSV) format. You can also support batch operations based on the CSV file format standard.

Net user – Adds or modifies user accounts, or displays user account information.

Ldifde – Creates, modifies, and deletes directory objects. You can also use Ldifde to extend the schema, export Active Directory user and group information to other applications or services, and populate Active Directory Domain Services (AD DS) with data from other directory services.

Dsadd – Adds specific types of objects to the directory.

csvde.exe is the best option to add multiple users. As you just need to export the excel spreadsheet as a .csv file and make sure the parameters are correct.

You can use Csvde to import and export Active Directory data that uses the comma- separated value format.

Use a spreadsheet program such as Microsoft Excel to open this .csv file and view the header and value information.

References:

Exam Ref 70-410: Installing and Configuring Windows Server 2012 R2: Chapter 5: Install and administer Active Directory, Objective 5.2: Create and Manage Active Directory Users and Computers, p. 269

NEW QUESTION 202

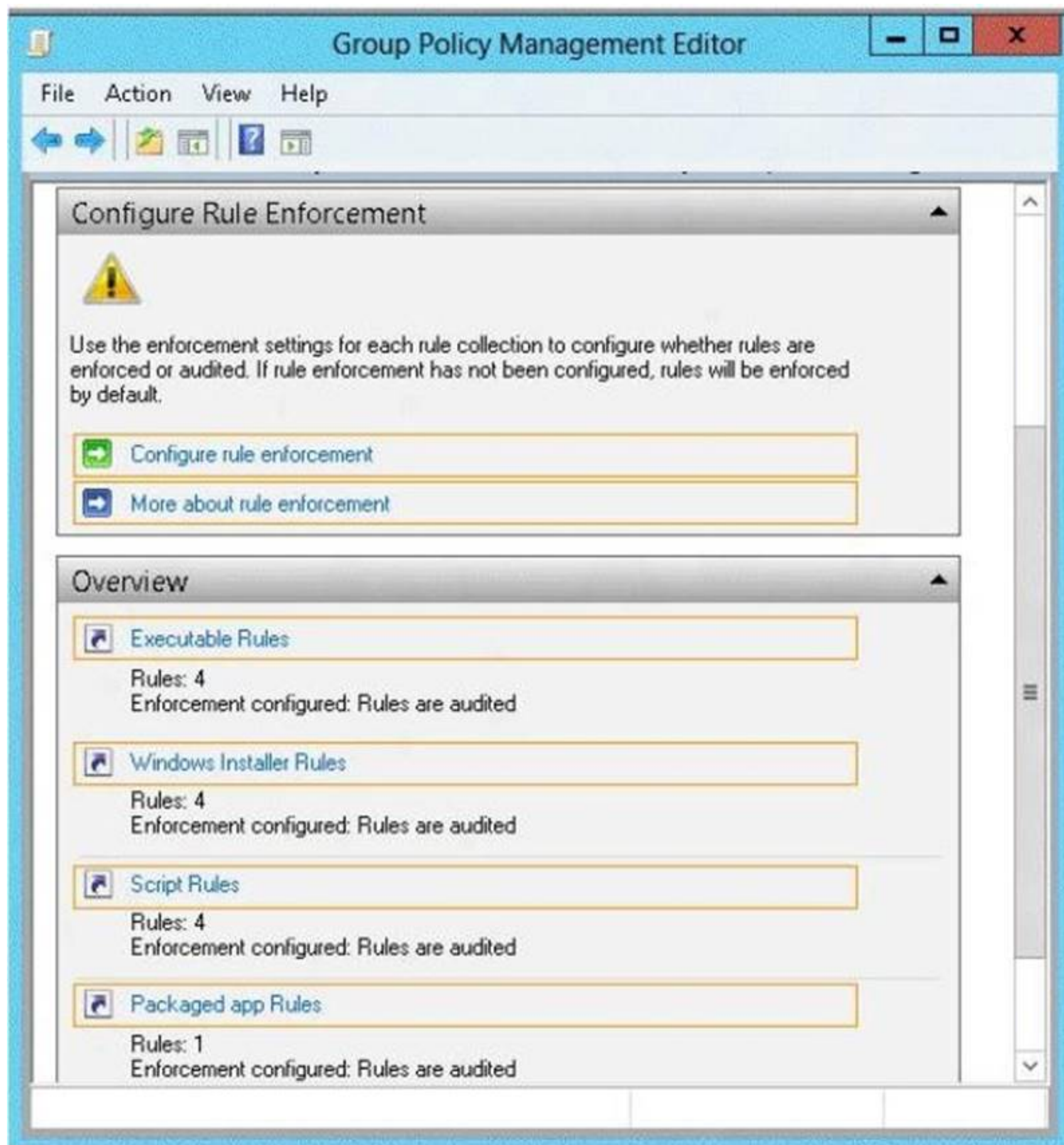
HOTSPOT - (Topic 3)

Your network contains an Active Directory domain named contoso.com. All client computers run Windows 8.

An administrator creates an application control policy and links the policy to an organizational unit (OU) named OU1. The application control policy contains several deny rules. The deny rules apply to the Everyone group.

You need to prevent users from running the denied application. What should you configure?

To answer, select the appropriate object in the answer area.



- A. Mastered
- B. Not Mastered

Answer: A

Explanation:

To enable the Enforce rules enforcement setting by using the Local Security Policy snap-in

1. Click Start, type secpol.msc in the Search programs and files box, and then press ENTER.
2. If the User Account Control dialog box appears, confirm that the action it displays is what you want, and then click Yes.
3. In the console tree, double-click Application Control Policies, right-click AppLocker, and then click Properties.
4. On the Enforcement tab, select the Configured check box for the rule collection that you want to enforce, and then verify that Enforce rules is selected in the list for that rule collection.
5. Repeat step 4 to configure the enforcement setting to Enforce rules for additional rule collections.
6. Click OK.

You should apply an application control policy for executable rules. When AppLocker policies from various GPOs are merged, both the rules and the enforcement modes are merged. The most similar Group Policy setting is used for the enforcement mode, and all rules from linked GPOs are applied.

References:

Exam Ref 70-410: Installing and Configuring Windows Server 2012 R2, Chapter 6: Create and Manage Group Policy, Objective 6.2: Local Users and Groups, p. 329. <http://technet.microsoft.com/en-us/library/dd759115.aspx>

NEW QUESTION 203

- (Topic 3)

Your network contains an Active Directory domain named contoso.com. All domain controllers run Windows Server 2012 R2.

The domain contains a server named Server1 that runs Windows Server 2012 R2. You need to ensure that when users log on to Server1, their user account is added

automatically to a local group named Group1 during the log on process.

Which Group Policy settings should you modify?

- A. User Rights Assignment
- B. Preferences
- C. Security Options
- D. Restricted Groups

Answer: B

Explanation:

With Preferences, local and domain accounts can be added to a local group without affecting the existing members of the group

References:

Training Guide: Installing and Configuring Windows Server 2012 R2: Chapter 8: File Services and Storage, p. 361.

[http://technet.microsoft.com/en-us/library/cc785631\(v=ws.10\).aspx](http://technet.microsoft.com/en-us/library/cc785631(v=ws.10).aspx) <http://www.grouppolicy.biz/2010/01/how-to-use-group-policy-preferences-to-secure-local-administrator-groups/>

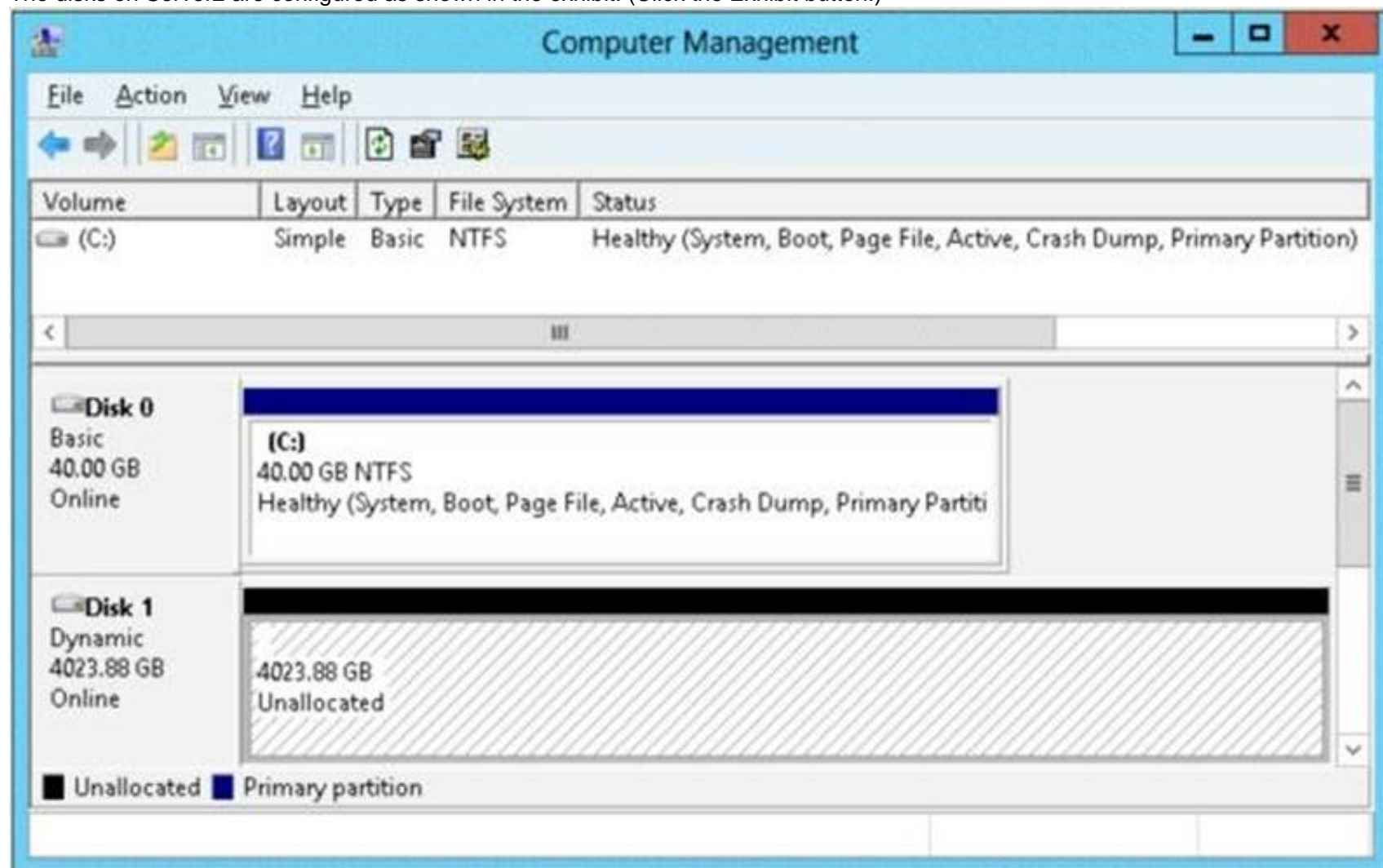
[http://technet.microsoft.com/en-us/library/cc780182\(v=ws.10\).aspx](http://technet.microsoft.com/en-us/library/cc780182(v=ws.10).aspx) <http://technet.microsoft.com/en-us/library/hh831424.aspx>

NEW QUESTION 206

- (Topic 3)

You have a server named Server2 that runs Windows Server 2012 R2. Server2 has the Hyper-V server role installed.

The disks on Server2 are configured as shown in the exhibit. (Click the Exhibit button.)



You create a virtual machine on Server2 named VM1.

You need to ensure that you can configure a pass-through disk for VM1. What should you do?

- A. Convert Disk 1 to a basic disk.
- B. Take Disk 1 offline.
- C. Create a partition on Disk 1.
- D. Convert Disk 1 to a MBR disk.

Answer: B

Explanation:

Pass-through Disk Configuration

Hyper-V allows virtual machines to access storage mapped directly to the Hyper-V server without requiring the volume be configured. The storage can either be a physical disk internal to the Hyper-V server or it can be a Storage Area Network (SAN) Logical Unit (LUN) mapped to the Hyper-V server. To ensure the Guest has exclusive access to the storage, it must be placed in an Offline state from the Hyper-V server perspective

NEW QUESTION 208

HOTSPOT - (Topic 3)

You have three servers named Server1, Server2, and DC1 that run Windows Server 2012 R2. IPv6 addresses and configurations are assigned to all of the servers by using DHCPv6.

The IPv6 routing on Server1 is shown in the following table.

ifIndex	DestinationPrefix	NextHop	RouteMetric	PolicyStore
12	ff00::/8	::	256	ActiveStore
1	ff00::/8	::	256	ActiveStore
12	fe80::107b:3378:3d15:cc7a/128	::	256	ActiveStore
14	fe80::5efe:192.168.0.221/128	::	256	ActiveStore
12	fe80::/64	::	256	ActiveStore
12	fddd:eef8:223b:ea3f:a54f:dca7:3106:2aa7/128	::	256	ActiveStore
12	fddd:eef8:223b:ea3f:a54f:dca7:3d15:cc7a/128	::	256	ActiveStore
1	::1/128	::	256	ActiveStore

You verify that Server2 can ping the IPv6 address of DC1.

You need to ensure that Server1 can ping the IPv6 address of DC1.

What command should you run on Server1? (To answer, select the appropriate options in the answer area.)

-DestinationPrefix

-InterfaceIndex

-NextHop

-DestinationPrefix

InterfaceIndex

-NextHop

New-NetRoute

Set-NetRoute

::

fddd:eef8:223b:ea3f::/64

fddd:eef8:223b:ea3f:a54f:dca7::/3

::

fddd:eef8:223b:ea3f::/64

fddd:eef8:223b:ea3f:a54f:dca7::/3

- A. Mastered
B. Not Mastered

Answer: A

Explanation:

Before a routing table is used, the destination cache is checked for an entry matching the destination address in the packet being forwarded. If the destination cache does not contain an entry for the destination address, the routing table is used to determine:

The next-hop address - For a direct delivery (in which the destination is on a local link), the next-hop address is the destination address in the packet. For an indirect delivery (in which the destination is not on a local link), the next-hop address is the address of a router.

The next-hop interface - The interface identifies the physical or logical interface that is used to forward the packet either to its destination or to the next router.

NEW QUESTION 212

DRAG DROP - (Topic 3)

Your network contains an Active Directory domain named contoso.com. The domain contains a member server named Server1. Server1 runs Windows Server 2012 R2 and has the File and Storage Services server role installed.

On Server1, you create a share named Documents. The Share permission for the Documents share is configured as shown in the following table.

Permission type	Group or user name	Permission
Allow	Domain Admins	Full control

The NTFS permission for the Documents share is configured as shown in the following table.

Permission type	Principal	Access
Allow	Domain Admins	Full control

You need to configure the Share and NTFS permissions for the Documents share.

The permissions must meet the following requirements:

? Ensure that the members of a group named Group1 can read files and run programs in Documents.

? Ensure that the members of Group1 can modify the permissions on only their own files in Documents.

? Ensure that the members of Group1 can create folders and files in Documents.

? Minimize the number of permissions assigned to users and groups.

How should you configure the permissions?

To answer, drag the appropriate permission to the correct location. Each permission may be used once, more than once, or not at all. You may need to drag the split bar between panes or scroll to view content.

Permissions	Answer Area
Allow Creator Owner Full control	Share permissions: Permission
Allow Creator Owner Modify	NTFS permissions: Permission
Allow Group1 Change	NTFS permissions: Permission
Allow Group1 Full control	
Allow Group1 Modify	
Allow Group1 Read & execute, List folder contents, Read, Write	

- A. Mastered
- B. Not Mastered

Answer: A

Explanation:

Granting a user Full Control NTFS permission on a folder enables that user to take ownership of the folder unless the user is restricted in some other way. Be cautious in granting Full Control.

If you want to manage folder access by using NTFS permissions exclusively, set share permissions to Full Control for the Everyone group.

NTFS permissions affect access both locally and remotely. NTFS permissions apply regardless of protocol. Share permissions, by contrast, apply only to network shares. Share permissions do not restrict access to any local user, or to any terminal server user, of the computer on which you have set share permissions. Thus, share permissions do not provide privacy between users on a computer used by several users, nor on a terminal server accessed by several users.

NEW QUESTION 216

- (Topic 3)

Your network contains an active directory domain named Contoso.com. The domain contains a server named Server1 that runs Windows Server 2012 R2 and has the Hyper-V server role installed. You have a virtual machine named VM1. VM1 has a snapshot. You need to modify the Snapshot File Location of VM1.

What should you do first?

- A. Copy the snapshot file
- B. Pause VM1
- C. Shut down VM1
- D. Delete the snapshot

Answer: D

Explanation:

Snapshot data files are stored as .avhd files. Taking multiple snapshots can quickly consume storage space. In the first release version of Hyper-V (KB950050) and in Hyper-V in Windows Server 2008 Service Pack 2, snapshot, snapshot data files usually are located in the same folder as the virtual machine by default. In Hyper-V in Windows Server 2008 R2, the files usually are located in the same folder as the virtual hard disk. The following exceptions affect the location of the snapshot data files: If the virtual machine was imported with snapshots, they are stored in their own folder. If the virtual machine has no snapshots and you configure the virtual machine snapshot setting, all snapshots you take afterwards will be stored in the folder you specify.

Caution

Do not delete .avhd files directly from the storage location. Instead, use Hyper-V Manager to select the virtual machine, and then delete the snapshots from the snapshot tree. Do not expand a virtual hard disk when it is used in a virtual machine that has snapshots. Doing so will make the snapshots unusable.

[http://technet.microsoft.com/en-us/library/dd560637\(v=ws.10\).aspx](http://technet.microsoft.com/en-us/library/dd560637(v=ws.10).aspx)

NEW QUESTION 221

- (Topic 3)

Your network contains an Active Directory domain named contoso.com. The domain contains a server named Server1. Server1 runs Windows Server 2012 R2 and has the Hyper-V server role installed.

You have a virtual machine named VM1. VM1 has a checkpoint. You need to modify the Checkpoint File Location of VM1.

What should you do first?

- A. Copy the checkpoint file.
- B. Delete the checkpoint.
- C. Shut down VM1.
- D. Pause VM1.

Answer: B

NEW QUESTION 222

- (Topic 3)

You work as a senior administrator at Contoso.com. The Contoso.com network consists of a single domain named Contoso.com. All servers on the Contoso.com network have Windows Server 2012 installed, and all workstations have Windows 8 installed.

You are running a training exercise for junior administrators. You are currently discussing the Always Offline Mode.

Which of the following is TRUE with regards to the Always Offline Mode? (Choose all that apply.)

- A. It allows for swifter access to cached files and redirected folders.
- B. To enable Always Offline Mode, you have to satisfy the forest and domain functional- level requirements, as well as schema requirements
- C. It allows for lower bandwidth usage due to users are always working offline.
- D. To enable Always Offline Mode, you must have workstations running Windows 7 or Windows Server 2008 R2.

Answer: AC

Explanation:

There are no domain/forest/schema requirements, but clients must be running Windows 8/Windows Server 2012 or later.

Offline Files have four modes of operation: Online

Slow link Auto offline Manual offline

Offline Files transition between the three modes online, slow link and auto offline depending on connection speed. The user can always override the automatic mode selection by manually switching to manual offline mode.

To determine the connection speed two pings with default packet size are sent to the file server. If the average round-trip time is below 80 ms (Windows 7) or 35 ms (Windows 8), the connection is put into online mode, otherwise into slow link mode. The latency value of 35/80 ms is configurable through the Group Policy setting Configure slow-link mode. Reads, Writes and Synchronization

In online mode, changes to files are made on the file server as well as in the local cache (this induces a performance hit – see this article for details). Reads are satisfied from the local cache (if in sync).

In slow link mode, changes to files are made in the local cache. The local cache is background-synchronized with the file server every 6 hours (Windows 7) or 2 hours (Windows 8), by default. This can be changed through the Group Policy setting Configure Background Sync. . In auto offline mode, all reads and writes go to the local cache. No synchronization occurs. . In manual offline mode, all reads and writes go to the local cache. No synchronization occurs by default, but background synchronization can be enabled through the Group Policy setting Configure Background Sync.

NEW QUESTION 225

- (Topic 3)

You have a server named Server1 that runs Windows Server 2012 R2. Server1 has the Hyper-V server role installed. You have fixed-size VHD named Files.vhd.

You need to make the contents in Files.vhd available to several virtual machines. The solution must meet the following requirements:

? Ensure that if the contents are changed on any virtual machine, the changes are not reflected on the other virtual machines.

? Minimize the amount of disk space used.

What should you do?

- A. Create a fixed-size VHD
- B. Transfer the information from Files.vhd to the new VHDX file.
- C. Convert Files.vhd to a dynamically expanding VHD?
- D. Create a dynamically expanding VHD
- E. Transfer the information from Files.vhd to the new VHDX file.
- F. Create differencing VHDXs that use Files.vhd as the parent disk.

Answer: D

Explanation:

A. A conversion would be needed from VHD to VHDX. Not available to multiple VM's

B. Single VHD not available to multiple VM's. Changes wouldn't be reflected

C. A conversion would be needed from VHD to VHDX. Not available to multiple VM's

D. Child disk for multiple VM's with Files.vhd as parent. A differencing disk is associated with another virtual hard disk that you select when you create the differencing disk. This means that the disk to which you want to associate the differencing disk must exist first. This virtual hard disk is called the "parent" disk and the differencing disk is the "child" disk. The parent disk can be any type of virtual hard disk.

The differencing disk stores all changes that would otherwise be made to the parent disk if the differencing disk was not being used. The differencing disk provides an ongoing way to save changes without altering the parent disk. You can use the differencing disk to store changes indefinitely, as long as there is enough space on the physical disk where the differencing disk is stored. The differencing disk expands dynamically as data is written to it and can grow as large as the maximum size allocated for the parent disk when the parent disk was created.

NEW QUESTION 229

- (Topic 3)

You have a server named Server1 that runs Windows Server 2012 R2.

You plan to create an image of Server1.

You need to remove the source files for all server roles that are not installed on Server1. Which tool should you use?

- A. servermanagercmd.exe
- B. imagex.exe
- C. ocsetup.exe
- D. dism.exe

Answer: D

Explanation:

servermanagercmd.exe – The ServerManagerCmd.exe command-line tool has been deprecated in

Windows Server 2008 R2. imagex.exe – ImageX is a command-line tool in Windows Vista that you can use to create and manage Windows image (.wim) files. A .wim file contains one or more volume images, disk volumes that contain images of an installed Windows operating system. dism.exe – Deployment Image Servicing and Management (DISM.exe) is a command-line tool that can be used to service a Windows image or to prepare a Windows Preinstallation Environment (Windows PE) image. It replaces Package Manager (Pkgmgr.exe), PEimg, and Intlcfg that were included in Windows Vista.

The functionality that was included in these tools is now consolidated in one tool (DISM.exe), and new functionality has been added to improve the experience for offline servicing. DISM can Add, remove, and enumerate packages. ocsetup.exe – The Ocsetup.exe tool is used as a wrapper for Package Manager (Pkgmgr.exe) and for Windows Installer (Msiexec.exe). Ocsetup.exe is a command-line utility that can be used to perform scripted installs and scripted uninstalls of Windows optional components. The Ocsetup.exe tool replaces the Sysocmgr.exe tool that Windows XP and Windows Server 2003i use.

The Dism utility can be used to create and mount an image of Server1. References:

[http://technet.microsoft.com/en-us/library/cc749447\(v=ws.10\).aspx](http://technet.microsoft.com/en-us/library/cc749447(v=ws.10).aspx)
[http://technet.microsoft.com/en-us/library/dd744382\(v=ws.10\).aspx](http://technet.microsoft.com/en-us/library/dd744382(v=ws.10).aspx)
Training Guide: Installing and Configuring Windows Server 2012 R2: Chapter 2: Deploying Servers, p. 44
Exam Ref 70-410: Installing and Configuring Windows Server 2012 R2: Chapter 1:
Installing and Configuring Servers, p. 19-22

NEW QUESTION 233

- (Topic 3)

You have a server named Server1 that runs Windows Server 2012 R2.

You need to remove Windows Explorer, Windows Internet Explorer, and all related components and files from Server1.

What should you run on Server1?

- A. Uninstall-WindowsFeature Server-Gui-Mgmt-Infra Remove
- B. Uninstall-WindowsFeature Server-Gui-Shell Remove
- C. `msiexec.exe /uninstall iexplore.exe /x`
- D. `msiexec.exe /uninstall explorer.exe /x`

Answer: B

Explanation:

- A. Would be a server core install
- B. No IE or taskbar, explorer or control panel
- C. Would leave components
- D. Would leave components

In Windows Server 2012 R2, you can remove the Server Graphical Shell, resulting in the “Minimal ServerInterface”.

This is similar to a Server with a GUI installation, but Internet Explorer 10, Windows Explorer, the desktop, and the Start screen are not installed.

Microsoft Management Console (MMC), Server Manager, and a subset of Control Panel are still present.

If the server has a full installation of Windows Server, and I need to bring the server down to minimal server interface, I only need to remove the Server-GUI-Shell.

NEW QUESTION 234

- (Topic 3)

Your network contains an Active Directory domain named contoso.com. The domain contains a member server named Server1. Server1 runs Windows Server 2012 R2 and has the Hyper-V server role installed.

You create an external virtual switch named Switch1. Switch1 has the following configurations:

? Connection type: External network

? Single-root I/O virtualization (SR-IOV): Enabled

? Ten virtual machines connect to Switch1.

You need to ensure that all of the virtual machines that connect to Switch1 are isolated from the external network and can connect to each other only. The solution must minimize network downtime for the virtual machines.

What should you do?

- A. Remove Switch1 and recreate Switch1 as an internal network.
- B. Change the Connection type of Switch1 to Private network.
- C. Change the Connection type of Switch1 to Internal network.
- D. Remove Switch1 and recreate Switch1 as a private network.

Answer: D

Explanation:

You cannot change the type of vswitch from external to private when SR-IOV is enabled at vswitch creation ->you need to recreate the vswitch.

NEW QUESTION 235

- (Topic 3)

Your network contains two servers named Server1 and Server2 that run Windows Server 2012 R2. Server1 is a DHCP server that is configured to have a scope named Scope1. Server2 is configured to obtain an IP address automatically.

In Scope1, you create a reservation named Res_Server2 for Server2. A technician replaces the network adapter on Server2.

You need to ensure that Server2 can obtain the same IP address. What should you modify on Server1?

- A. The Name Protection settings of Scope1
- B. The MAC address of Res_Server2
- C. The Advanced settings of Res_Server2
- D. The Network Access Protection Settings of Scope1

Answer: B

Explanation:

DHCP reservations are given based upon MAC address (at least on IPv4/DHCPv4).

For clients that require a constant IP address, you can either manually configure a static IP address, or assign a reservation on the DHCP server. Reservations are permanent lease assignments that are used to ensure that a specified client on a subnet can always use the same IP address. You can use DHCP reservations for hosts that require a consistent IP address, but do not need to be statically configured. DHCP reservations provide a mechanism by which IP addresses may be permanently assigned to a specific client based

on the MAC address of that client. The MAC address of a Windows client can be found running the `ipconfig /all` command.

For Linux systems the corresponding command is `ifconfig -a`. Once the MAC address has been identified, the reservation may be configured using either the DHCP console or at the command prompt using the `netsh` tool.

Media access control (MAC) address authorization functions in the same way as automatic number identification (ANI) authorization, but it is used for wireless clients and clients connecting to your network by using an 802.1X authenticating switch. Since the network adapter was replaced, you need to modify the MAC address on Server1 to ensure that Server2 can obtain the same IP address.

Reference: <http://technet.microsoft.com/en-us/library/dd197535%28v=WS.10%29.aspx>

NEW QUESTION 238

- (Topic 3)

Your network contains an Active Directory forest named contoso.com. The forest contains a child domain named corp.contoso.com. The network has Microsoft Exchange Server 2010 deployed. You need to create a mail-enabled distribution group. Which type of group should you create?

- A. Global
- B. Local
- C. Domain local
- D. Universal

Answer: D

Explanation:

Universal groups Groups that are used to grant permissions on a wide scale throughout a domain tree or forest. Members of global groups include accounts and groups from any domain in the domain tree or forest.

Microsoft Exchange Server 2007: Implementation and Administration. By Jim McBee, Benjamin Craig page 248: Only universal groups should be used as mail-enabled groups.

NEW QUESTION 239

DRAG DROP - (Topic 3)

Your network contains an Active Directory domain named contoso.com. The domain contains a server named Server1. Server1 runs Windows Server 2012 R2 and is configured as the only domain controller.

You need to retrieve a list of all the user accounts. The list must include the last time each user was authenticated successfully.

Which Windows PowerShell command should you run?

To answer, drag the appropriate cmdlet or property to the correct locations to complete the PowerShell command in the answer area. Each cmdlet or property may be used once, more than once, or not at all. You may need to drag the split bar between panes or scroll to view content.



- A. Mastered
- B. Not Mastered

Answer: A

Explanation:

The Get-ADUser cmdlet gets a user object or performs a search to retrieve multiple user objects.

lastLogondate is the correct parameter as the questions asks for the last time each user was authenticated successfully.

NEW QUESTION 240

- (Topic 3)

You have a virtual machine named VM1.

You install Windows Server 2012 R2 on VM1.

You plan to use VM1 as an image that will be distributed to sales users to demonstrate the features of a custom application. The custom application only requires the Web Server (IIS) server role to be installed.

You need to ensure that the VHD file for VM1 only contains the required Windows Server 2012 R2 source files.

Which tool should you use?

- A. servermanagercmd.exe
- B. dism.exe
- C. ocsetup.exe
- D. imagex.exe

Answer: B

Explanation:

You can use DISM to:

Add, remove, and enumerate packages and drivers. Enable or disable Windows features.

Apply changes based on the offline servicing section of an unattend.xml answer file. Configure international settings.

Upgrade a Windows image to a different edition. Prepare a Windows PE image.

Take advantage of better logging.

Service down-level operating systems like Windows Vista with SP1 and Windows Server 2008.

Service all platforms (32-bit, 64-bit, and Itanium).

Service a 32-bit image from a 64-bit host and service a 64-bit image from a 32-bit host. Make use of old Package Manager scripts. This command will mount the image before making any changes. This will ensure that only the required Windows Server 2012 R2 source files are contained.

NEW QUESTION 245

- (Topic 3)

Your network contains an Active Directory domain named contoso.com. All servers run Windows Server 2012 R2. The domain contains a member server named Server1. Server1 has the File Server server role installed.

On Server1, you create a share named Documents. The Documents share will contain the files and folders of all users.

You need to ensure that when the users connect to Documents, they only see the files to which they have access.

What should you do?

- A. Enable access-based enumeration.
- B. Configure Dynamic Access Control.
- C. Modify the Share permissions.
- D. Modify the NTFS permissions.

Answer: A

Explanation:

Access-based Enumeration is a new feature included with Windows Server 2003 Service Pack 1. This feature allows users of Windows Server 2003-Based file servers to list only the files and folders to which they have access when browsing content on the file server. This eliminates user confusion that can be caused when users connect to a file server and encounter a large number of files and folders that they cannot access. Access-based Enumeration filters the list of available files and folders on a server to include only those that the requesting user has access to. This change is important because this allows users to see only those files and directories that they have access to and nothing else. This mitigates the scenario where unauthorized users might otherwise be able to see the contents of a directory even though they don't have access to it.

Access-Based Enumeration (ABE) can be enabled at the Share properties through Server Manager

References:

Exam Ref 70-410: Installing and configuring Windows Server 2012 R2, Chapter 2: Configure server roles and features, Objective 2.1: Configure file and share access, p. 75- 80.

NEW QUESTION 250

- (Topic 3)

You have a server named Server1 that has the Print and Document Services server role installed.

You need to provide users with the ability to manage print jobs on Server1 by using a web browser.

What should you do?

- A. Start the Printer Extensions and Notifications service and set the service to start automatically.
- B. Install the LPD Service role service.
- C. Start the Computer Browser service and set the service to start automatically.
- D. Install the Internet Printing role service.

Answer: D

Explanation:

References:

Internet printing makes it possible for computers running Windows Server 2008 to use printers located anywhere in the world by sending print jobs using Hypertext Transfer Protocol (HTTP).

[http://technet.microsoft.com/en-us/library/cc731368\(v=ws.10\).aspx](http://technet.microsoft.com/en-us/library/cc731368(v=ws.10).aspx) <http://technet.microsoft.com/en-us/library/cc731857.aspx>

NEW QUESTION 251

- (Topic 3)

Your network contains an Active Directory domain named contoso.com. All servers run Windows Server 2012 R2.

When a domain user named User3 attempts to log on to a client computer named Client10, User3 receives the message shown in the following exhibit. (Click the Exhibit button.)



You need to ensure that User3 can log on to Client10. What should you do?

- A. From Active Directory Users and Computers, configure the Logon Workstations setting of User3.
- B. On Client10, modify the Allow log on locally User Rights Assignment.
- C. From Active Directory Users and Computers, configure the Personal Virtual Desktop property of User3.
- D. On Client10, modify the Deny log on locally User Rights Assignment.

Answer: A

NEW QUESTION 252

- (Topic 3)

Your network contains an Active Directory domain named contoso.com. The domain contains a domain controller named DC5. DC5 has a Server Core Installation of Windows Server 2012 R2.

You need to uninstall Active Directory from DC5 manually. Which tool should you use?

- A. The dsamain.exe command
- B. The ntdsutil.exe command
- C. The Remove-ADComputer cmdlet
- D. The Remove-WindowsFeature cmdlet

Answer: C

Explanation:

The Remove-ADComputer cmdlet removes an Active Directory computer. Example: Remove-ADComputer -Identity "FABRIKAM-SRV4" Remove one particular computer.

References:

<http://technet.microsoft.com/en-us/library/ee662310.aspx> <http://support.microsoft.com/kb/216498>

<http://technet.microsoft.com/en-us/library/ee617250.aspx>

NEW QUESTION 255

- (Topic 3)

Your network contains an Active Directory domain named contoso.com. The domain contains two domain controllers.

The domain controllers are configured as shown in the following table.

Name	Operating system	Operation master role
DC1	Windows Server 2012 R2	Domain naming master Schema master
DC2	Windows Server 2008 R2	PDC emulator RID master Infrastructure master

In the perimeter network, you install a new server named Server1 that runs Windows Server 2012 R2. Server1 is in a workgroup.

You need to perform an offline domain join of Server1 to the contoso.com domain. What should you do first?

- A. Transfer the PDC emulator role to Dc1.
- B. Run the djoin.exe command.
- C. Run the dsadd.exe command.
- D. Transfer the infrastructure master role to DC1.

Answer: B

Explanation:

- A. Creates a new Active Directory computer.
- B. Use djoin for offline join in the perimeter network
- C. Adds specific types of objects to the directory.
- D. Add the local computer to a domain or workgroup.

NEW QUESTION 257

- (Topic 3)

You have a domain controller named Server1 that runs Windows Server 2012 R2 and has the DNS Server server role installed. Server1 hosts a DNS zone named contoso.com and a GlobalNames zone.

You discover that the root hints were removed from Server1. You need to view the default root hints of Server1.

Which file should you open?

- A. Netlogon.dns
- B. Cache.dns
- C. Globalnames.dns
- D. Place.dns

Answer: B

Explanation:

DNS Server service implements root hints using a file, Cache.dns, stored in the systemroot\System32\Dns folder on the server. Thus viewing the Cache.dns file will show the root hints.

NEW QUESTION 260

.....

Thank You for Trying Our Product

We offer two products:

1st - We have Practice Tests Software with Actual Exam Questions

2nd - Questions and Answers in PDF Format

70-410 Practice Exam Features:

- * 70-410 Questions and Answers Updated Frequently
- * 70-410 Practice Questions Verified by Expert Senior Certified Staff
- * 70-410 Most Realistic Questions that Guarantee you a Pass on Your First Try
- * 70-410 Practice Test Questions in Multiple Choice Formats and Updates for 1 Year

100% Actual & Verified — Instant Download, Please Click
[Order The 70-410 Practice Test Here](#)