

Exam Questions 300-430

Implementing Cisco Enterprise Wireless Networks (ENWLSI)

<https://www.2passeasy.com/dumps/300-430/>



NEW QUESTION 1

A corporation has recently implemented a BYOD policy at their HQ. Which two risks should the security director be concerned about? (Choose two.)

- A. network analyzers
- B. malware
- C. lost and stolen devices
- D. keyloggers
- E. unauthorized users

Answer: BC

NEW QUESTION 2

Which two statements about the requirements for a Cisco Hyperlocation deployment are true? (Choose two.)

- A. After enabling Cisco Hyperlocation on Cisco CMX, the APs and the wireless LAN controller must be restarted.
- B. NTP can be configured, but that is not recommended.
- C. The Cisco Hyperlocation feature must be enabled on the wireless LAN controller and Cisco CMX.
- D. The Cisco Hyperlocation feature must be enabled only on the wireless LAN controller.
- E. If the Cisco CMX server is a VM, a high-end VM is needed for Cisco Hyperlocation deployments.

Answer: AC

NEW QUESTION 3

An engineer must use Cisco AVC on a Cisco WLC to prioritize Cisco IP cameras that use the wireless network. Which element do you configure in a rule?

- A. permit-ACL
- B. WMM required
- C. mark
- D. rate-limit

Answer: C

NEW QUESTION 4

Which three properties are used for client profiling of wireless clients? (Choose three.)

- A. HTTP user agent
- B. DHCP
- C. MAC OUI
- D. hostname
- E. OS version
- F. IP address

Answer: ABC

NEW QUESTION 5

What is the difference between PIM sparse mode and PIM dense mode?

- A. Sparse mode supports only one switch
- B. Dense mode supports multiswitch networks.
- C. Sparse mode flood
- D. Dense mode uses distribution trees.
- E. Sparse mode uses distribution tree
- F. Dense mode floods.
- G. Sparse mode supports multiswitch network
- H. Dense mode supports only one switch.

Answer: C

NEW QUESTION 6

Refer to the exhibit.

802.11a(5 GHz) > Media

Voice

Video

Media

Call Admission Control (CAC)

Admission Control (ACM)

☒ Enabled

CAC Method 4

Load Based ▾

Max RF Bandwidth (5-85) (%)

75

Reserved Roaming Bandwidth (0-25) (%)

6

Expedited bandwidth

☐

SIP CAC Support 3

☐ Enabled

Per-Call SIP Bandwidth 2

SIP Codec

G.711 ▾

SIP Bandwidth (kbps)

64

SIP Voice Sample Interval (msecs)

20 ▾

Which two items must be supported on the VoWLAN phones to take full advantage of this WLAN configuration? (Choose two.)

- A. TSPEC
- B. SIFS
- C. 802.11e
- D. WMM
- E. APSD

Answer: CD

NEW QUESTION 7

A user is trying to connect to a wireless network that is configured for WPA2-Enterprise security using a corporate laptop. The CA certificate for the authentication server has been installed on the Trusted Root Certification Authorities store on the laptop. The user has been prompted to enter the credentials multiple times, but the authentication has not succeeded. What is causing the issue?

- A. There is an IEEE invalid 802.1X authentication policy on the authentication server.
- B. The user Active Directory account is locked out after several failed attempts.
- C. There is an invalid 802.1X authentication policy on the authenticator.
- D. The laptop has not received a valid IP address from the wireless controller.

Answer: C

NEW QUESTION 8

A new MSE with wIPS service has been installed and no alarm information appears to be reaching the MSE from controllers. Which protocol must be allowed to reach the MSE from the controllers?

- A. SOAP/XML
- B. NMSP
- C. CAPWAP
- D. SNMP

Answer: A

NEW QUESTION 9

An engineer completed the basic installation for two Cisco CMX servers and is in the process of configuring high availability, but it fails. Which two statements about the root of the issue are true? (Choose two.)

- A. The Cisco CMX instances are installed in the same subnet.
- B. The types of the primary and secondary Cisco CMX installations differ.
- C. The delay between the primary and secondary instance is 200 ms.
- D. The sizes of the primary and secondary Cisco CMX installations differ.
- E. Both Cisco CMX installations are virtual.

Answer: BD

NEW QUESTION 10

The IT manager is asking the wireless team to get a report for all guest user associations during the past two weeks. In which two formats can Cisco Prime save

this report? (Choose two.)

- A. CSV
- B. PDF
- C. XLS
- D. DOC
- E. plain text

Answer: AB

Explanation:

Reference: https://www.cisco.com/c/en/us/td/docs/net_mgmt/prime/infrastructure/3-2/user/guide/bk_CiscoPrimeInfrastructure_3_2_0_UserGuide/bk_CiscoPrimeInfrastructure_3_2_0_UserGuide_chapter_01010.html

NEW QUESTION 10

An IT team is growing quickly and needs a solution for management device access. The solution must authenticate users from an external repository instead of the current local on the WLC, and it must also identify the user and determine what level of access users should have. Which protocol do you recommend to achieve these goals?

- A. network policy server
- B. RADIUS
- C. TACACS+
- D. LDAP

Answer: C

NEW QUESTION 14

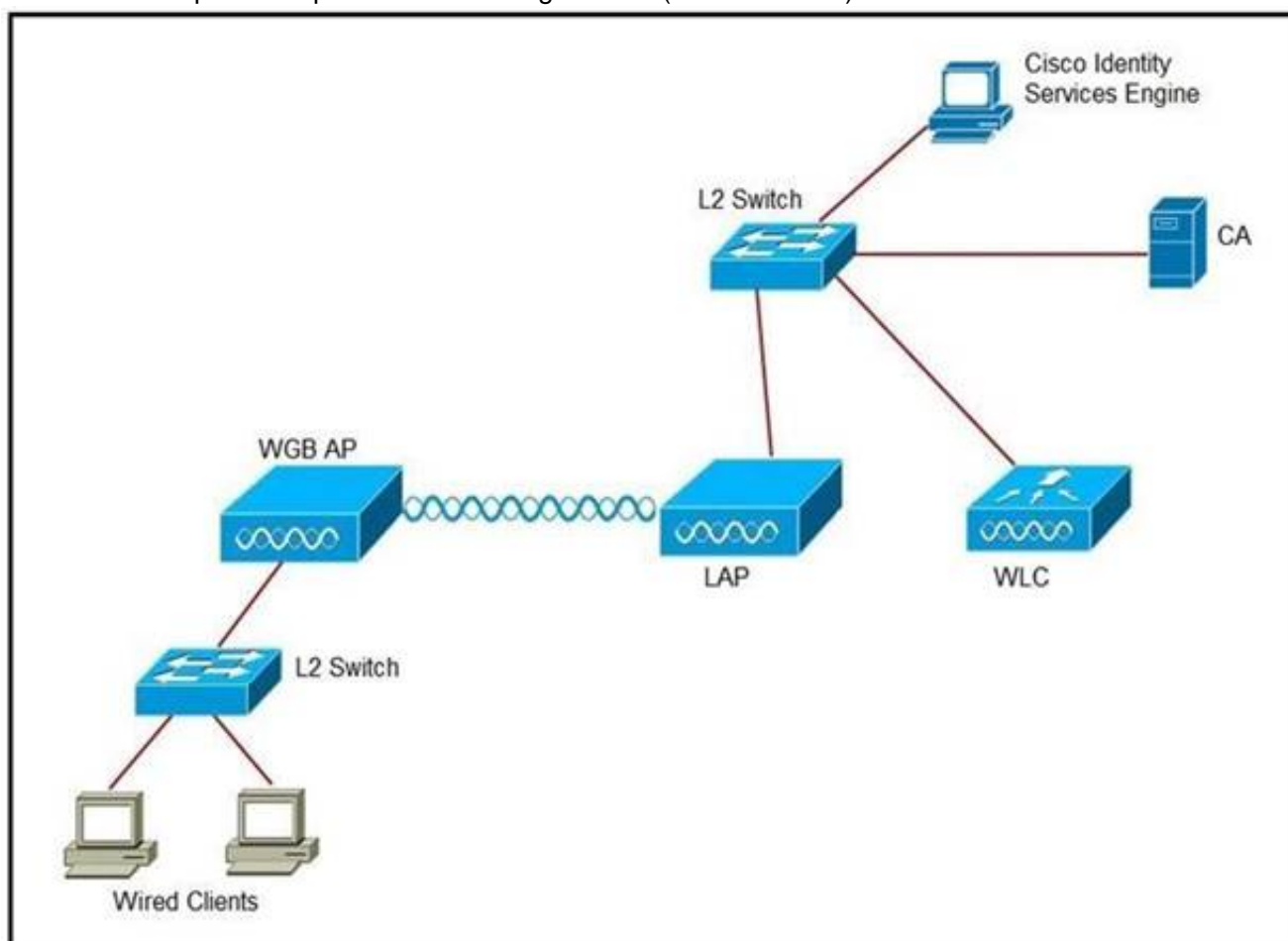
A network engineer observes a spike in controller CPU overhead and overall network utilization after multicast is enabled on a controller with 500 APs. Which feature connects the issue?

- A. controller IGMP snooping
- B. multicast AP multicast mode
- C. broadcast forwarding
- D. unicast AP multicast mode

Answer: B

NEW QUESTION 19

Refer to the exhibit. An engineer must connect a fork lift via a WGB to a wireless network and must authenticate the WGB certificate against the RADIUS server. Which three steps are required for this configuration? (Choose three.)



- A. Configure the certificate, WLAN, and radio interface on WGB.
- B. Configure the certificate on the WLC.
- C. Configure WLAN to authenticate using ISE.
- D. Configure the access point with the root certificate from ISE.
- E. Configure WGB as a network device in ISE.
- F. Configure a policy on ISE to allow devices to connect that validate the certificate.

Answer: ACF

NEW QUESTION 21

When using a Cisco Catalyst 9800 Series Wireless Controller, which statement about AutoQoS is true?

- A. It has a set of predefined profiles that you cannot modify further
- B. It matches traffic and assigns each matched packet to QoS groups
- C. It automates deployment of wired QoS and makes wireless QoS implementation easier
- D. It allows the output policy map to put specific QoS queues into specific subgroups

Answer: B

NEW QUESTION 22

What is the default NMSP echo interval between Cisco MSE and a Wireless LAN Controller?

- A. 10 seconds
- B. 15 seconds
- C. 30 seconds
- D. 60 seconds

Answer: B

Explanation:

Reference: https://www.cisco.com/en/US/docs/wireless/mse/3350/6.0/CAS/configuration/guide/msecg_ch4_CAS.html

NEW QUESTION 27

An engineer is following the proper upgrade path to upgrade a Cisco AireOS WLC from version 7.3 to 8.9. Which two ACLs for Cisco CWA must be configured when upgrading from the specified codes? (Choose two.)

- A. Permit 0.0.0.0 0.0.0.0 UDP any any
- B. Permit 0.0.0.0 0.0.0.0 any DNS any
- C. Permit 0.0.0.0 0.0.0.0 UDP DNS any
- D. Permit 0.0.0.0 0.0.0.0 UDP any DNS
- E. Permit any any any

Answer: AD

NEW QUESTION 30

Refer to the exhibit.

No.	Time	Source	Destination	Protocol	Length	Info
1	0.000000	10.48.39.251	10.48.71.21	UDP	162	9999 → 2003 Len=120
2	0.003747	10.48.39.251	10.48.71.21	UDP	146	9999 → 2003 Len=104
3	1.087479	10.48.39.214	10.48.71.21	UDP	130	9999 → 2003 Len=88
4	2.733577	10.48.39.214	10.48.71.21	UDP	130	9999 → 2003 Len=88
5	2.999859	10.48.39.251	10.48.71.21	UDP	178	9999 → 2003 Len=136
6	3.001227	10.48.39.251	10.48.71.21	UDP	162	9999 → 2003 Len=120
7	4.355249	10.48.39.214	10.48.71.21	UDP	146	9999 → 2003 Len=104
8	5.999538	10.48.39.251	10.48.71.21	UDP	178	9999 → 2003 Len=136
9	6.000959	10.48.39.251	10.48.71.21	UDP	146	9999 → 2003 Len=104
10	8.999418	10.48.39.251	10.48.71.21	UDP	146	9999 → 2003 Len=104
11	9.000791	10.48.39.251	10.48.71.21	UDP	178	9999 → 2003 Len=136
12	9.262904	10.48.39.214	10.48.71.21	UDP	146	9999 → 2003 Len=104
13	10.894785	10.48.39.214	10.48.71.21	UDP	130	9999 → 2003 Len=88
14	11.995126	10.48.39.251	10.48.71.21	UDP	194	9999 → 2003 Len=152
15	11.999193	10.48.39.251	10.48.71.21	UDP	162	9999 → 2003 Len=120
16	14.994902	10.48.39.251	10.48.71.21	UDP	178	9999 → 2003 Len=136
17	14.996368	10.48.39.251	10.48.71.21	UDP	162	9999 → 2003 Len=120
18	17.994857	10.48.39.251	10.48.71.21	UDP	146	9999 → 2003 Len=104
19	17.996231	10.48.39.251	10.48.71.21	UDP	162	9999 → 2003 Len=120
20	18.102843	10.48.39.251	10.48.71.21	UDP	130	9999 → 2003 Len=88
21	21.098408	10.48.39.251	10.48.71.21	UDP	146	9999 → 2003 Len=104
22	21.099952	10.48.39.251	10.48.71.21	UDP	162	9999 → 2003 Len=120
23	24.098574	10.48.39.251	10.48.71.21	UDP	146	9999 → 2003 Len=104
24	24.099804	10.48.39.251	10.48.71.21	UDP	162	9999 → 2003 Len=120
25	27.098099	10.48.39.251	10.48.71.21	UDP	162	9999 → 2003 Len=120
26	27.099839	10.48.39.251	10.48.71.21	UDP	130	9999 → 2003 Len=88
27	28.880307	10.48.39.164	10.48.71.21	UDP	146	9999 → 2003 Len=104
28	28.881569	10.48.39.214	10.48.71.21	CAPP	146	CAPP MD5 Encrypted
29	30.094237	10.48.39.251	10.48.71.21	UDP	178	9999 → 2003 Len=136
30	30.097812	10.48.39.251	10.48.71.21	UDP	146	9999 → 2003 Len=104
31	30.513451	10.48.39.214	10.48.71.21	UDP	130	9999 → 2003 Len=88
32	30.515926	10.48.39.164	10.48.71.21	UDP	130	9999 → 2003 Len=88

> Frame 1: 162 bytes on wire (1296 bits), 162 bytes captured (1296 bits)
> Ethernet II, Src: CiscInc_2a:c4:a3 (00:06:f6:2a:c4:a3), Dst: Vmware_99:4e:19 (00:50:56:99:4e:19)
> Internet Protocol Version 4, Src: 10.48.39.251, Dst: 10.48.71.21
> User Datagram Protocol, Src Port: 9999 (9999), Dst Port: 2003 (2003)
v Data (120 bytes)
Data: ae 2f 44 f0 00 00 b4 5f ef 06 fd cb b7 6c 03 c7 ...
[Length: 120]

The image shows a packet capture that was taken at the CLI of the Cisco CMX server. It shows UDP traffic from the WLC coming into the server. What does the capture prove?

- A. The Cisco CMX server receives NetFlow data from the WLC.
- B. The Cisco CMX server receives NMSP traffic from the WLC.
- C. The Cisco CMX server receives SNMP traffic from the WLC.
- D. The Cisco CMX server receives Angle-of-Arrival data from the WLC.

Answer: D

NEW QUESTION 35

A FlexConnect remote office deployment is using five 2702i APs indoors and two 1532i APs outdoors. When a code upgrade is performed and FlexConnect Smart AP Image Upgrade is leveraged, but no FlexConnect Master AP has been configured, how many image transfers between the WLC and APs will occur?

- A. 1
- B. 2
- C. 5
- D. 7

Answer: B

NEW QUESTION 37

Which three characteristics of a rogue AP pose a high security risk? (Choose three.)

- A. open authentication
- B. high RSSI
- C. foreign SSID
- D. accepts clients
- E. low RSSI

F. distant location

Answer: ACD

NEW QUESTION 38

Branch wireless users report that they can no longer access services from head office but can access services locally at the site. New wireless users can associate to the wireless while the WAN is down. Which three elements (Cisco FlexConnect state, operation mode, and authentication method) are seen in this scenario? (Choose three.)

- A. authentication-local/switch-local
- B. WPA2 personal
- C. authentication-central/switch-central
- D. lightweight mode
- E. standalone mode
- F. WEB authentication

Answer: ABE

NEW QUESTION 39

What is an important consideration when implementing a dual SSID design for BYOD?

- A. After using the provisioning SSID, an ACL that used to make the client switch SSIDs forces the user to associate and traverse the network by MAC filtering.
- B. If multiple WLCs are used, the WLAN IDs must be exact for the clients to be provisioned and traverse the network correctly.
- C. SSIDs for this setup must be configured with NAC State-RADIUS NAC for the clients to authenticate with Cisco ISE, or with NAC State-ISE NAC for Cisco ISE to associate the client.
- D. One SSID is for provisioning and the other SSID is for gaining access to the network
- E. The use of an ACL should not be enforced to make the client connect to the REAL SSID after provisioning.

Answer: D

NEW QUESTION 44

Which two protocols are used to communicate between the Cisco MSE and the Cisco Prime Infrastructure network management software? (Choose two.)

- A. HTTPS
- B. Telnet
- C. SOAP
- D. SSH
- E. NMSP

Answer: AE

NEW QUESTION 47

An engineer is configuring multicast for wireless for an all-company video meeting on a network using EIGRP and BGP within a single domain from a single source. Which type of multicast routing should be implemented?

- A. Protocol Independent Multicast Dense Mode
- B. Source Specific Multicast
- C. Multicast Source Discovery Protocol
- D. Protocol Independent Multicast Sparse Mode

Answer: D

NEW QUESTION 50

Which component must be integrated with Cisco DNA Center to display the location of a client that is experiencing connectivity issues?

- A. Cisco Hyperlocation Module
- B. Wireless Intrusion Prevention System
- C. Cisco Connected Mobile Experiences
- D. Cisco Mobility Services Engine

Answer: A

NEW QUESTION 54

A Cisco WLC has been added to the network and Cisco ISE as a network device, but authentication is failing. Which configuration within the network device configuration should be verified?

- A. SNMP RO community
- B. device interface credentials
- C. device ID
- D. shared secret

Answer: D

NEW QUESTION 57

.....

THANKS FOR TRYING THE DEMO OF OUR PRODUCT

Visit Our Site to Purchase the Full Set of Actual 300-430 Exam Questions With Answers.

We Also Provide Practice Exam Software That Simulates Real Exam Environment And Has Many Self-Assessment Features. Order the 300-430 Product From:

<https://www.2passeasy.com/dumps/300-430/>

Money Back Guarantee

300-430 Practice Exam Features:

- * 300-430 Questions and Answers Updated Frequently
- * 300-430 Practice Questions Verified by Expert Senior Certified Staff
- * 300-430 Most Realistic Questions that Guarantee you a Pass on Your FirstTry
- * 300-430 Practice Test Questions in Multiple Choice Formats and Updatesfor 1 Year