

# Microsoft

## Exam Questions MS-600

Building Applications and Solutions with Microsoft 365 Core Services



**NEW QUESTION 1**

- (Exam Topic 1)

You need to configure the initial login request in the access token JavaScript script. Which code segment should you insert at line 01?

- A. const scopes = ['https://graph.microsoft.com/.default'];
- B. const accessTokenRequest = {};
- C. const scopes = ['https://graph.microsoft.com/Files.Read.All', 'https://graph.microsoft.com/Mail.Send.All'];
- D. const accessTokenRequest = {scopes: ['https://graph.microsoft.com/Files.ReadWrite', 'https://graph.microsoft.com/Mail.Send']};

**Answer: D**

**Explanation:**

Scenario: ADatum identifies the following technical requirements for the planned E-invoicing capabilities:

- Ensure that all operations performed by E-invoicing against Office 365 are initiated by a user. Require that the user authorize E-invoicing to access the Office 365 data the first time the application attempts to access Office 365 data on the user's behalf.

Reference: <https://docs.microsoft.com/en-us/graph/permissions-reference>

**NEW QUESTION 2**

- (Exam Topic 1)

Which URI should you use to query all the emails that relate to an invoice?



- A. Option A
- B. Option B
- C. Option C
- D. Option D

**Answer: A**

**NEW QUESTION 3**

- (Exam Topic 2)

You need to develop an add-in for Microsoft Excel that can be used from the Windows, Mac, and web versions of Excel.

What are two ways to develop the add-in? Each correct answer presents a complete solution?

NOTE: Each correct selection is worth one point.

- A. From Microsoft Teams, install App Studio
- B. From Microsoft Visual Studio that has the Microsoft Office/SharePoint development workload installed, create a new project that uses a Web Add-in template
- C. From the Microsoft Office 365 portal, use Microsoft PowerApps
- D. Use the Yeoman generator for Microsoft Office Add-ins to create the project, and then open the project in Microsoft Visual Studio Code
- E. From Microsoft Visual Studio that has the Microsoft Office/SharePoint development workload installed, create a new project that uses a Visual Studio Tools for Office (VSTO) template

**Answer: DE**

**Explanation:**

D: Run the following command to create an add-in project using the Yeoman generator: yo office

Visual Studio Code is a great tool to help you develop your custom Office Add-ins regardless if they are for Outlook, Word, Excel, PowerPoint and run in the web clients, Windows clients, iOS clients or on macOS.

Open the project in Visual Studio Code by entering the following on the command line from within the same folder where you ran the generator: code.

E: You can create VSTO Add-ins for Excel.

To create a new Excel VSTO Add-in project in Visual Studio

- Start Visual Studio.
- On the File menu, point to New, and then click Project.
- In the templates pane, expand Visual C# or Visual Basic, and then expand Office/SharePoint.
- Under the expanded Office/SharePoint node, select the Office Add-ins node.
- In the list of project templates, select Excel 2010 Add-in or Excel 2013 Add-in.
- In the Name box, type FirstExcelAddIn.
- Click OK.

Visual Studio creates the FirstExcelAddIn project and opens the ThisAddIn code file in the editor. References: <https://docs.microsoft.com/en-us/office/dev/add-ins/tutorials/excel-tutorial> [https://code.visualstudio.com/docs/other/office#\\_use-visual-studio-code-to-develop-your-office-addin](https://code.visualstudio.com/docs/other/office#_use-visual-studio-code-to-develop-your-office-addin) <https://docs.microsoft.com/en-us/visualstudio/vsto/walkthrough-creating-your-first-vsto-add-in-for-excel>

#### NEW QUESTION 4

- (Exam Topic 2)

What should you add to a SharePoint Framework (SPFx) solution to ensure that the solution can be used as a Microsoft Teams tab?

- A. the TeamsTab value to the componentType property in the manifest file
- B. a manifest file to the Teams folder in the solution
- C. the TeamsTab value to the supportedHosts property in the manifest file
- D. a manifest file to the webparts folder in the solution

**Answer: D**

#### Explanation:

You need to update the web part manifest to make it available for Microsoft Teams. Locate the manifest json file for the web part you want to make available to Teams and modify the supportedHosts properties to include "TeamsTab".

Reference:

<https://docs.microsoft.com/en-us/sharepoint/dev/spfx/web-parts/get-started/using-web-part-as-msteams-tab>

#### NEW QUESTION 5

- (Exam Topic 2)

You are developing a server-based web app that will use OAuth2 on behalf of the user and will be registered with the Microsoft identity platform.

Which two types of token will the app retrieve as part of the authorization flow? Each correct answer presents part of the solution. NOTE: Each correct selection is worth one point.

- A. context token
- B. Kerberos token
- C. refresh token
- D. SAML token
- E. access token

**Answer: BD**

#### NEW QUESTION 6

- (Exam Topic 2)

You have a custom Microsoft Word add-in that was written by using Microsoft Visual Studio Code. A user reports that there is an issue with the add-in.

You need to debug the add-in for Word Online.

What should you do before you begin debugging in Visual Studio Code?

- A. Disable script debugging in your web browser
- B. Sideload the add-in
- C. Publish the manifest to the Microsoft SharePoint app catalog
- D. Add the manifest path to the trusted catalogs

**Answer: C**

#### Explanation:

Debug your add-in from Excel or Word on the web

To debug your add-in by using Office on the web (see step 3):

- \* 12. Deploy your add-in to a server that supports SSL.
- \* 13. In your add-in manifest file, update the SourceLocation element value to include an absolute, rather than a relative, URI.
- \* 14. Upload the manifest to the Office Add-ins library in the app catalog on SharePoint.
- \* 15. Launch Excel or Word on the web from the app launcher in Office 365, and open a new document.
- \* 16. On the Insert tab, choose My Add-ins or Office Add-ins to insert your add-in and test it in the app.
- \* 17. Use your favorite browser tool debugger to debug your add-in.

Reference: <https://docs.microsoft.com/en-us/office/dev/add-ins/testing/debug-add-ins-in-office-online>

#### NEW QUESTION 7

- (Exam Topic 2)

You have an API that is secured by using Azure Active Directory (Azure AD). You are designing a SharePoint Framework (SPFx) solution.

Which object should you use to connect to the API from the solution?

- A. SPHttpClient
- B. HttpClient
- C. AadHttpClient

**Answer: C**

#### Explanation:

By using the AadHttpClient, you can easily connect to APIs secured by using Azure AD without having to implement the OAuth flow yourself.

Reference: <https://docs.microsoft.com/en-us/sharepoint/dev/spfx/use-aadhttpclient>

#### NEW QUESTION 8

- (Exam Topic 2)

You are developing an application that will run as an overnight background service on a server. The service will access web-hosted resources by using the application's identity and the OAuth 2.0 client credentials grant flow.

You register the application and grant permissions. The tenant administrator grants admin consent to the application.

You need to get the access token from Azure Active Directory (Azure AD).

Which URI should you use for the POST request? To answer, select the appropriate options in the answer area.

NOTE: Each correct selection is worth one point.

https://login.microsoftonline.com/<TenantId>/oauth2/v2.0/  
?client\_id=<ClientID>  
&client\_secret=<ClientSecret>  
&scope=https://graph.microsoft.com/.default  
&grant\_type=

authorization\_code  
client\_credentials  
on\_behalf\_of  
refresh\_token  
urn:ietf:params:oauth:grant-type:jwt-bearer

authorize  
code  
keys  
token

- A. Mastered
- B. Not Mastered

Answer: A

**Explanation:**

Oauth2 client\_id client\_secret

The authorization code flow begins with the client directing the user to the /authorize endpoint. Box 1: token

Use the authorization code to request an access token.

Now that you've acquired an authorization code and have been granted permission by the user, you can redeem the code for an access token to the desired resource, by sending a POST request to the /token endpoint:

Box 2: authorization\_code

Use the authorization code to request an access token. Example:

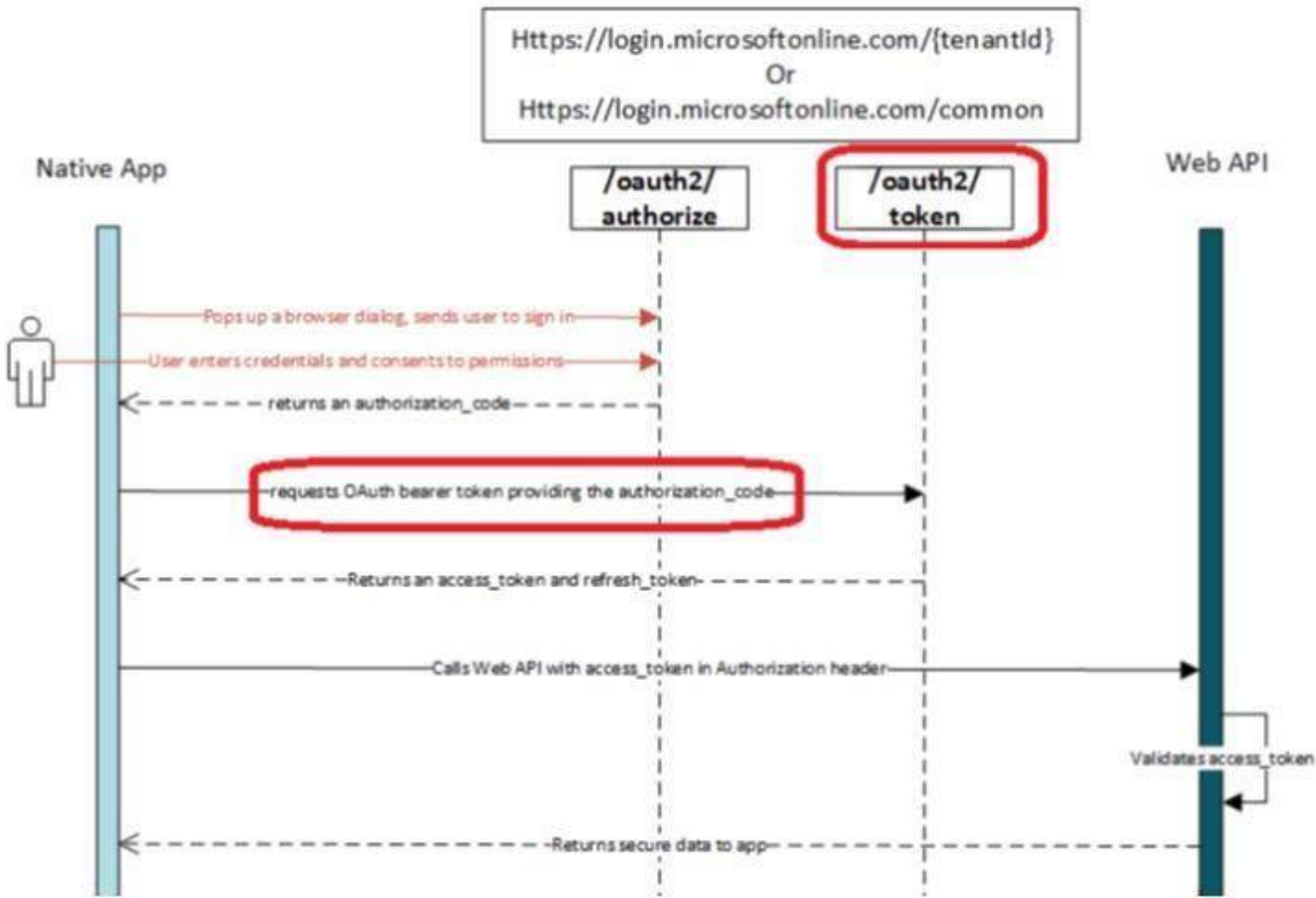
// Line breaks for legibility only

POST /{tenant}/oauth2/token HTTP/1.1 Host: https://login.microsoftonline.com

Content-Type: application/x-www-form-urlencoded grant\_type=authorization\_code

etc.

Note: At a high level, the entire authorization flow for an application looks a bit like this:



Reference: <https://docs.microsoft.com/en-us/azure/active-directory/develop/v1-protocols-oauth-code>

**NEW QUESTION 9**

- (Exam Topic 2)

For each of the following statements, select Yes if the statement is true. Otherwise, select No.

NOTE: Each correct selection is worth one point.

| Statements   | Yes                   | No                    |
|--|-----------------------|-----------------------|
| A Microsoft Office Add-in manifest must be stored in Azure Directory (Azure AD).                         | <input type="radio"/> | <input type="radio"/> |
| A Microsoft Office Add-in manifest must be in the JSON format.   | <input type="radio"/> | <input type="radio"/> |
| A Microsoft Office Add-in manifest must contain a URI that points to the location that hosts the add-in. | <input type="radio"/> | <input type="radio"/> |

- A. Mastered  
B. Not Mastered

**Answer:** A

**Explanation:**

Box 1: No

Box 2: No

The manifest is in XML format.

Box 3: Yes

SourceLocation is required and specifies the source file location(s) for your Office Add-in as a URL between 1 and 2018 characters long. The source location must be an HTTPS address, not a file path.

References: <https://docs.microsoft.com/en-us/office/dev/add-ins/develop/add-in-manifests> <https://docs.microsoft.com/en-us/office/dev/add-ins/reference/manifest/sourcelocation>

**NEW QUESTION 10**

- (Exam Topic 2)

You are building an application that will help Azure Active Directory (Azure AD) administrators manage Microsoft 365 groups.

You are building a details page that will display information about the groups.

You need to display the groups of which the current group is member. The results must contain the nested groups.

Which URI should you use?

`https://graph.microsoft.com/v1.0/groups/{id}/transitiveMembers`

`https://graph.microsoft.com/v1.0/groups/{id}/owners`

`https://graph.microsoft.com/v1.0/groups/{id}/memberOf`

`https://graph.microsoft.com/v1.0/groups/{id}/members`

`https://graph.microsoft.com/v1.0/groups/{id}/transitiveMemberOf`

- A. Option A  
B. Option B  
C. Option C  
D. Option D  
E. Option E

**Answer:** D

**NEW QUESTION 10**

- (Exam Topic 2)

You are building a Microsoft Outlook Web Add-in.

You need to persist user preferences between devices by using the minimum amount of development effort. Which API should you use?

- A. the Microsoft Graph API  
B. the REST API for the Blob service  
C. the JavaScript API for Microsoft Office  
D. the Table service REST API

**Answer:** C

**Explanation:**

You can persist add-in state and settings with the JavaScript API for Office.

The JavaScript API for Office provides the Settings, RoamingSettings, and CustomProperties objects for saving add-in state across sessions

Reference: <https://docs.microsoft.com/en-us/office/dev/add-ins/develop/persisting-add-in-state-and-settings>

**NEW QUESTION 11**

- (Exam Topic 2)



You are developing a front end web app.

You want to display the current username as part of the user interface.

You need to retrieve the current username from Microsoft Graph by using a REST request. The solution must minimize the amount of information returned.

To which URI should you send the request?

`https://graph.microsoft.com/v1.0/users/john@contoso.com/people?$select=displayName`

`https://graph.microsoft.com/v1.0/me?$search=displayName`

`https://graph.microsoft.com/v1.0/me`

`https://graph.microsoft.com/v1.0/me?$select=displayName`

- A. Option A
- B. Option B
- C. Option C
- D. Option D

**Answer:** A

#### NEW QUESTION 14

- (Exam Topic 2)

You are developing an Azure web app that will enable users to view a consolidated view of multiple users' tasks based on data in Microsoft Planner and Outlook.

The app will use the Microsoft identity platform and a certificate to establish an authorization flow between the app and Microsoft 365.

You obtain a certificate and you create an Azure Active Directory (Azure AD) application. You need to set up authorization for the application.

Which three actions should you perform? Each correct answer presents part of the solution. NOTE: Each correct selection is worth one point.

A. Add the application permissions to the Azure AD application.

- A. Create a secret in the Azure AD application.
- B. Add the required delegated permissions to the Azure AD application.
- C. Modify the code of the Azure web app to use the certificate to obtain an access token for Microsoft Graph.
- D. From the Azure portal, configure a certificate public key for the Azure AD application.

**Answer:** ACD

#### NEW QUESTION 18

- (Exam Topic 2)

This question requires that you evaluate the underlined BOLD text to determine if it is correct.

You can use App Studio for Microsoft Teams to develop all the components of a bot application.

Instructions: Review the underlined text. If it makes the statement correct, select "No change is needed". If the statement is incorrect, select the answer choice that makes the statement correct.

- A. No change is needed
- B. configure a Teams tab in an application
- C. develop a SharePoint Framework (SPFx) web part
- D. provision a bot by using the Bot Framework

**Answer:** B

#### Explanation:

Tabs provide a place for you to display rich interactive web content. You can define both personal and team tabs.

There can be only 1 team tab per app, but up to 16 personal tabs per app.

Reference: <https://blog.thoughtstuffs.co.uk/2019/04/what-is-app-studio-in-microsoft-teams-and-why-do-i-care/>

#### NEW QUESTION 23

- (Exam Topic 2)

You have a SharePoint Framework (SPFx) 1.5 solution.

You need to ensure that the solution can be used as a tab in Microsoft Teams. What should you do first?

- A. Convert the solution to use the Bot Framework
- B. Deploy the solution to a developer site collection
- C. Deploy the solution to the Microsoft AppSource store
- D. Upgrade the solution to the latest version of SPFx

**Answer:** D

#### Explanation:

Starting with the SharePoint Framework v1.8, you can implement your Microsoft Teams tabs using SharePoint Framework.

Reference:

<https://docs.microsoft.com/en-us/sharepoint/dev/spfx/web-parts/get-started/using-web-part-as-msteams-tab>

#### NEW QUESTION 26

- (Exam Topic 2)

You have an application that has the code shown in the exhibits. (Click the JavaScript Version tab or the C# Version tab.)

For each of the following statements, select Yes if the statement is true. Otherwise, select No. NOTE: Each correct selection is worth one point.

JavaScript Version

```
module.exports = function(context, myTrigger) {
    //...
    var group = {
        DisplayName: groupTitle,
        GroupTypes: ["Unified"],
        MailEnabled: true,
        SecurityEnabled: false,
        Visibility: "Private"
    };
    client.api('/groups').post(group).then((groupResult) => {
        client.api('/users/${userName}').get().then((userResult) => {
            var user = {
                "@odata.id": 'https://graph.microsoft.com/v1.0/directoryObjects/${UserResult.Id}'
            };
            client.api('/groups/${groupResult.Id}/members/${ref}').post(user).then(() => {
                context.done();
            });
        });
    });
};
```

C# Version

```
namespace MyProject
{
    public static class MainActivity
    {
        [FunctionName(nameof(MainActivity))]
        public static async Task Run([ActivityTrigger] string accessToken, string userEmail, string groupTitle)
        {
            var client = new GraphServiceClient(new GraphAuthProvider(accessToken));
            var group = new Group
            {
                DisplayName = groupTitle,
                GroupTypes = new string[] { "Unified" },
                MailEnabled = true,
                SecurityEnabled = false,
                Visibility = "Private"
            };
            var createdGroup = await client.Groups.Request().AddAsync(group);
            var user = await client.Users[userEmail].Request().GetAsync();
            await client.Groups[createdGroup.Id].Members.References.Request().AddAsync(user);
        }
    }
}
```

| Statements  | Yes                   | No                    |
|---|-----------------------|-----------------------|
| The code creates a unified group in Microsoft Office 365. | <input type="radio"/> | <input type="radio"/> |
| The code adds a member to a group.                        | <input type="radio"/> | <input type="radio"/> |
| The code adds an owner to a group.                        | <input type="radio"/> | <input type="radio"/> |
| The code creates a team in Microsoft Teams.               | <input type="radio"/> | <input type="radio"/> |

- A. Mastered
- B. Not Mastered

**Answer: A**

**Explanation:**

Box 1: Yes

Unified is specified in the code.

Note: You can create the following types of groups: Office 365 group (unified group)

Security group Box 2: Yes

A member is added to the group. Box 3: No

Box 4: No

Reference: <https://docs.microsoft.com/en-us/graph/api/group-post-groups>

#### NEW QUESTION 31

- (Exam Topic 2)

You are developing a mobile application that will display the current signed-in user's display name and the application settings. The application settings are stored as Microsoft graph extension of the user profile.

Users of the application have intermittent network connectivity.

You need to retrieve the least amount of data by using a single REST request. The solution must minimize network traffic.

Which URI Should you use to retrieve the data?

```
https://graph.microsoft.com/v1.0/me?$select=displayName,userType&$expand=extensions
```

```
https://graph.microsoft.com/v1.0/me?$select=displayName,id&$expand=extensions
```

```
https://graph.microsoft.com/v1.0/me
```

```
https://graph.microsoft.com/v1.0/me?$expand=extensions
```

- A. Option A
- B. Option B
- C. Option C
- D. Option D

**Answer: C**

### NEW QUESTION 35

- (Exam Topic 2)

Note: This question is part of a series of questions that present the same scenario. Each question in the series contains a unique solution that might meet the stated goals. Some question sets have more than one correct solution, while others might not have a correct solution.

After you answer a question in this section, you will NOT be able to return to it. As a result, these questions will not appear in the review screen.

You are developing a new application named App1 that uses the Microsoft identity platform to authenticate to Azure Active Directory (Azure AD).

Currently, App1 can read user profile information. You need to allow App1 to read the user's calendar.

Solution: From the Azure portal, add the Microsoft Graph API and the Calendar.Read permission by using the API permission list of App1. Grant tenant admin consent.

Does this meet the goal?

- A. Yes
- B. No

**Answer: A**

#### Explanation:

Microsoft Graph Calendars.Read allows the app to read events in user calendars.

For your app to access data in Microsoft Graph, the user or administrator must grant it the correct permissions via a consent process.

Application permissions are used by apps that run without a signed-in user present; for example, apps that run as background services or daemons. Application permissions can only be consented by an administrator.

References: <https://docs.microsoft.com/en-us/azure/active-directory/develop/v2-permissions-and-consent> <https://docs.microsoft.com/en-us/graph/permissions-reference>

### NEW QUESTION 39

- (Exam Topic 2)

You are developing an Azure function to provision a team in Microsoft Teams.

You need to create a group named Project A, add a classification of Private to the group, and then convert Project A to a team group.

How should you complete the REST requests? To answer, select the appropriate options in the answer area. NOTE: Each correct selection is worth one point.



Request 1:

▼

https://graph.microsoft.com/v1.0/groups

|       |
|-------|
| GET   |
| PATCH |
| POST  |
| PUT   |

```
{
  "description": "",
  "displayName": "Project A",
  "groupTypes": ["Unified"],
  "mailEnabled": true,
  "mailNickname": "projecta",
  "securityEnabled": "projecta",
  "securityEnabled": false
}
```

Request 2:

▼

https://graph.microsoft.com/v1.0/groups/{GroupID}

|       |
|-------|
| GET   |
| PATCH |
| POST  |
| PUT   |

```
{
  "classification": "Private"
}
```

Request 3:

▼

https://graph.microsoft.com/v1.0/groups/{GroupID}/team

|       |
|-------|
| GET   |
| PATCH |
| POST  |
| PUT   |

```
{
  "memberSettings": {
    "allowCreateUpdateChannels": true
  }
}
```

- A. Mastered
- B. Not Mastered

Answer: A

Explanation:

Box 1: post

You need to create a group named Project A.

The following example creates an Office 365 group. POST https://graph.microsoft.com/v1.0/groups Content-type: application/json

Content-length: 244

```
{
  "description": "Self help community for library", "displayName": "Library Assist",
  "groupTypes": [ "Unified"
],
  "mailEnabled": true, "mailNickname": "library", "securityEnabled": false
}
```

Box 2: PATCH

Add a classification of Private to the group.

You can set the classification property in a PATCH request for the group, if do not set it in the initial POST request that creates the group.

Box 3: put

Then convert Project A to a team group. Syntax: PUT /groups/{id}/team

References: <https://docs.microsoft.com/en-us/graph/api/group-post-groups> <https://docs.microsoft.com/en-us/graph/api/resources/group>

<https://docs.microsoft.com/en-us/graph/api/team-put-teams>

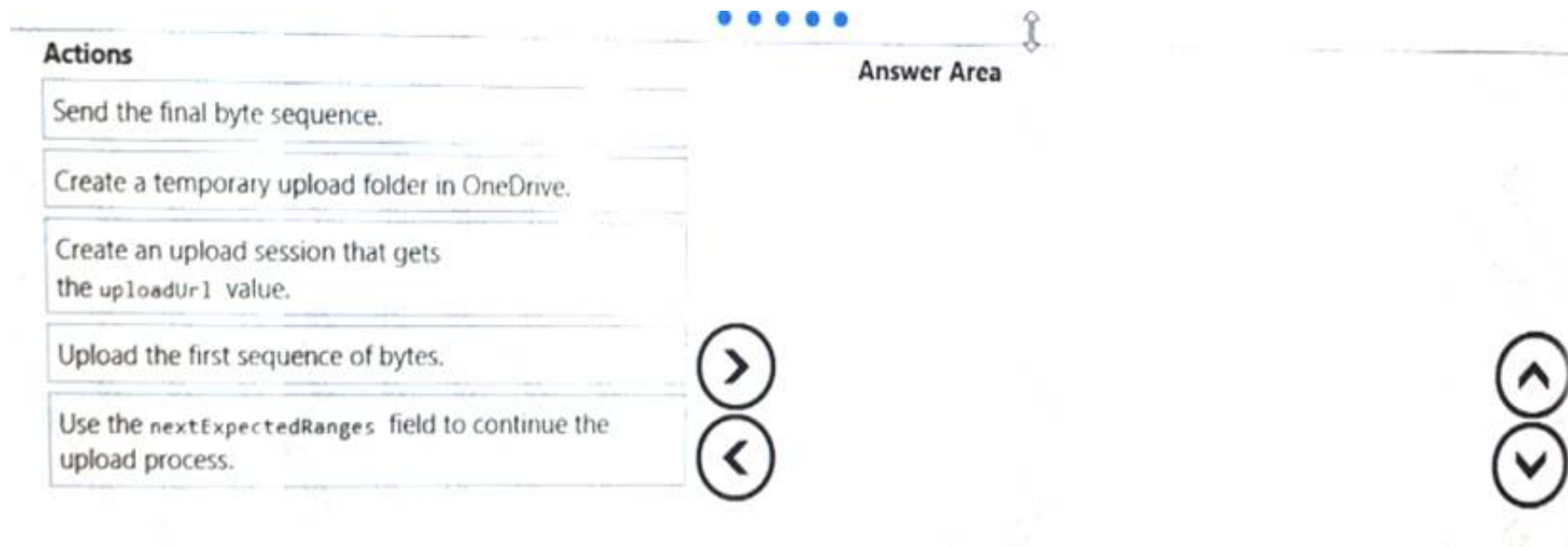
NEW QUESTION 42

- (Exam Topic 2)

You are developing an application that will upload files that are larger than 50 MB to Microsoft OneDrive.

You need to recommend an upload solution to ensure that the file upload process can resume if a network error occurs during the upload.

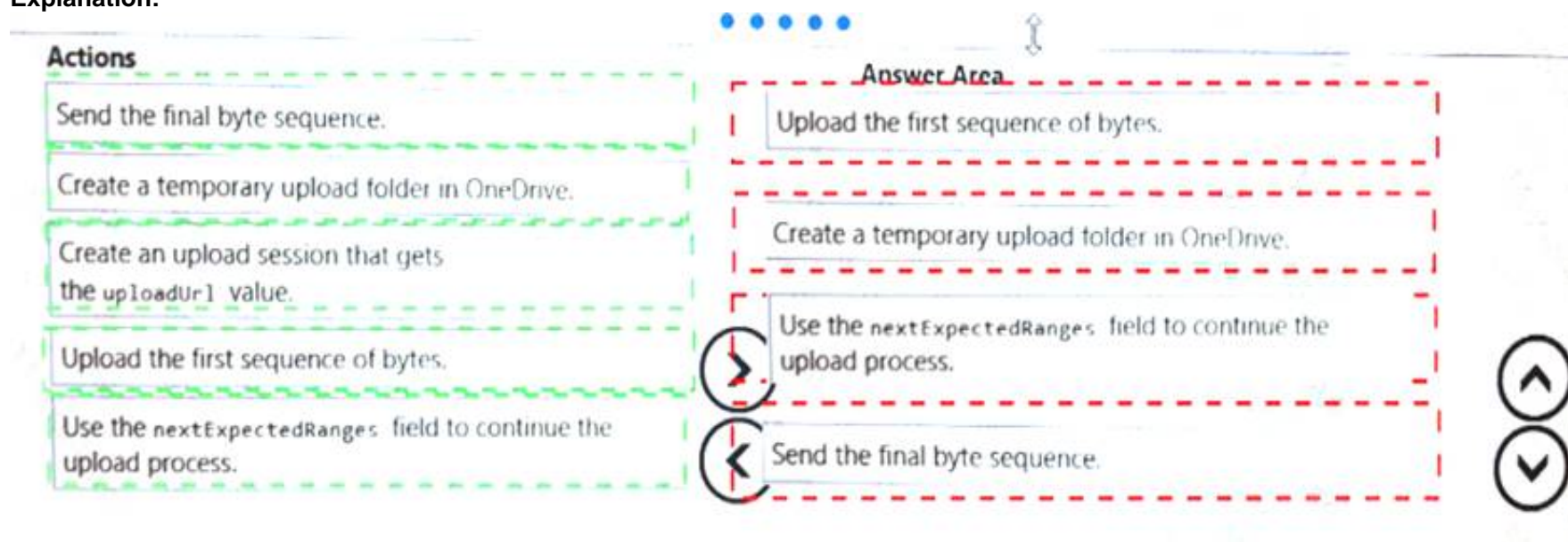
Which four actions should you perform in sequence? To answer, move the actions from the list of actions to the answer area and arrange them in the correct order.



- A. Mastered  
 B. Not Mastered

**Answer: A**

**Explanation:**



#### NEW QUESTION 45

- (Exam Topic 2)

You develop a web API named WebApi1.

When validating a token received from a client application, WebApi1 receives a `MsalUiRequiredException` exception from Azure Active Directory (Azure AD).

You need to formulate the response that WebApi1 will return to the client application. Which HTTP response should you send?

- A. HTTP 307 Temporary Redirect  
 B. HTTP 400 Bad Request  
 C. HTTP 403 Forbidden  
 D. HTTP 412 Precondition Failed

**Answer: D**

**Explanation:**

The HyperText Transfer Protocol (HTTP) 412 Precondition Failed client error response code indicates that access to the target resource has been denied. This happens with conditional requests on methods other than GET or HEAD when the condition defined by the `If-Unmodified-Since` or `If-None-Match` headers is not fulfilled. In that case, the request, usually an upload or a modification of a resource, cannot be made and this error response is sent back.

`MsalUiRequiredException`

The "Ui Required" is proposed as a specialization of `MsalServiceException` named `MsalUiRequiredException`. This means you have attempted to use a non-interactive method of acquiring a token (e.g. `AcquireTokenSilent`), but MSAL could not do it silently. this can be because:

- > you need to sign-in
- > you need to consent
- > you need to go through a multi-factor authentication experience.

The remediation is to call `AcquireTokenInteractive` try

```
{
app.AcquireTokenXXX(scopes, account) WithYYYY(...)
ExecuteAsync()
}
catch(MsalUiRequiredException ex)
{
app.AcquireTokenInteractive(scopes) WithAccount(account)
WithClaims(ex.Claims) ExecuteAsync();
}
```

#### NEW QUESTION 49

- (Exam Topic 2)

You are developing a single-page application (SPA).

You plan to access user data from Microsoft Graph by using an AJAX call.

You need to obtain an access token by the Microsoft Authentication Library (MSAL). The solution must minimize authentication prompts.

How should you complete the code segment? To answer, select the appropriate options in the answer area. NOTE: Each correct selection is worth one point.

```
var msalApp = new Msal.UserAgentApplication(msalConfig);
...
var loginRequest = {scopes: appConfig.scopes};
msalApp. 
        ▼
        

acquireTokenPopup
            acquireToken Silent
            loginPopup
            loginRedirect

 (loginRequest).then(function(loginResponse) {

var tokenRequest = {scopes: appConfig.scopes};
msalApp. 
        ▼
        

acquireTokenByAuthorizationCode
            acquireTokenPopup
            acquireTokenRedirect
            acquireTokenSilent

 (tokenRequest).then(function(tokenResponse) {

updateApplicationUI(tokenResponse);
}).catch(function (error) {

msalApp. 
        ▼
        

acquireTokenByAuthorizationCode
            acquireTokenPopup
            acquireTokenRedirect
            acquireTokenSilent

 (tokenRequest).then(function(tokenResponse) {

updateApplicationUI(tokenResponse);

});
```

- A. Mastered  
 B. Not Mastered

**Answer: A**

**Explanation:**

Box 1: loginPopup

Box 2: acquireTokenSilent

The pattern for acquiring tokens for APIs with MSAL.js is to first attempt a silent token request by using the acquireTokenSilent method. When this method is called, the library first checks the cache in browser storage to see if a valid token exists and returns it. When no valid token is in the cache, it sends a silent token request to Azure Active Directory (Azure AD) from a hidden iframe. This method also allows the library to renew tokens.

Box 3: acquireTokenPopup

//AcquireToken Failure, send an interactive request. Example:

```
userAgentApplication.loginPopup(applicationConfig.graphScopes).then(function (idToken) {
```

```
//Login Success
```

```
userAgentApplication.acquireTokenSilent(applicationConfig.graphScopes).then(function (accessToken) {
```

```
//AcquireToken Success updateUI();
```

```
}, function (error) {
```

```
//AcquireToken Failure, send an interactive request. userAgentApplication.acquireTokenPopup(applicationConfig.graphScopes).then(function (accessToken) {
updateUI();
```

```
}, function (error) { console.log(error);
```

```
});
```

```
});
```

```
}, function (error) { console.log(error);
```

```
});
```

Reference: <https://github.com/AzureAD/microsoft-authentication-library-for-js/issues/339>

**NEW QUESTION 54**

- (Exam Topic 2)

This question requires that you evaluate the underlined text to determine if it is correct.

Microsoft Visual Studio Code contains samples that you can use to quickly prototype a Microsoft Office Web Add-in for Microsoft Word.

Instructions: Review the underlined text. If it makes the statement correct, select "No change is needed." If the statement is incorrect, select the answer choice that makes the statement correct.

- A. No change is needed.  
 B. Microsoft AppSource  
 C. The Office UI Fabric



D. The Script Lab add-in

Answer: D

NEW QUESTION 59

- (Exam Topic 2)

When developing a tab in Microsoft teams, personal, group, and shared tabs can all be implemented as configurable tabs.

Instructions: Review the underlined BOLD text, if it makes the statement correct, select “ No change is needed if the statement is incorrect selct the answer choice that makes the statement correct.

- A. No change is needed.
- B. Share the same code
- C. Be used in a conversation
- D. Have a configuration panel

Answer: A

NEW QUESTION 64

- (Exam Topic 2)

You are developing an application that will use Microsoft Graph.

You attempt to retrieve a list of the groups in your organization by using a URI of https://graph.microsoft.eom/vi.0/groups on behalf of the user.

The application fails. The diagnostic logs show the following information:

- \* An HTTP 403 Forbidden status code
- \* An Authorization\_RequestDenied error code
- \* The following error message: "Insufficient privileges to complete the operation."

You need to ensure that the application can retrieve the list of groups. The solution must use the principle of least privilege. Which two actions should you perform?

Each correct answer presents part of the solution.

NOTE; Each correct selection is worth one point.

- A. In the permission request for the application, request the Grou
- B. Rea
- C. All permission.
- D. Grant tenant admin consent for the Group.Rea
- E. All permission.
- F. Configure the application to use application permissions.
- G. In the permission request for the application, request the Grou
- H. Readwrit
- I. All permission

Answer: AD

NEW QUESTION 66

- (Exam Topic 2)

For each of the following statements, select Yes if the statement is true. Otherwise, select NO. NOTE: Each correct selection is worth one point.

Answer Area

| Statements   | Yes                   | No                    |
|--|-----------------------|-----------------------|
| Search-based messaging extensions can query a third-party service and show the information on a card.  | <input type="radio"/> | <input type="radio"/> |
| Search-based messaging extensions can use the Bot Framework to interact with third-party applications. | <input type="radio"/> | <input type="radio"/> |
| Search-based messaging extensions can be used to display information on a tab.                         | <input type="radio"/> | <input type="radio"/> |

- A. Mastered
- B. Not Mastered

Answer: A

Explanation:

Answer Area

| Statements   | Yes                              | No                               |
|--|----------------------------------|----------------------------------|
| Search-based messaging extensions can query a third-party service and show the information on a card.  | <input type="radio"/>            | <input checked="" type="radio"/> |
| Search-based messaging extensions can use the Bot Framework to interact with third-party applications. | <input type="radio"/>            | <input checked="" type="radio"/> |
| Search-based messaging extensions can be used to display information on a tab.                         | <input checked="" type="radio"/> | <input type="radio"/>            |



NEW QUESTION 67

- (Exam Topic 2)

You are developing a Microsoft Teams solution to host an existing webpage as a Teams tab. Which requirement must the page meet?

- A. The page must adhere to HTML 5.0 standards
- B. The page must adhere to WCAG 2.0 accessibility guidelines
- C. The page must be hosted on a domain that is on the validDomains list of the manifest
- D. The page must use CSS3 stylesheets

Answer: C

Explanation:

Make sure that all domains used in your tab pages are listed in the manifest.json validDomains array. Reference: <https://docs.microsoft.com/en-us/microsoftteams/platform/tabs/how-to/create-tab-pages/configuration-page>

NEW QUESTION 71

- (Exam Topic 2)

For each of the following statements, select Yes if the statement is true. Otherwise, select No. NOTE: Each correct select is worth one point.

Answer Area

| Statements  | Yes                   | No                    |
|---|-----------------------|-----------------------|
| A Microsoft Office Web Add-in can be scaffolded by using a Yeoman generator.                | <input type="radio"/> | <input type="radio"/> |
| Microsoft Office Web Add-ins can be developed by using C#.                                  | <input type="radio"/> | <input type="radio"/> |
| The code for a Microsoft Office Web Add-in has access to the local file system of a device. | <input type="radio"/> | <input type="radio"/> |

- A. Mastered
- B. Not Mastered

Answer: A

Explanation:

Answer Area

| Statements  | Yes                              | No                    |
|---|----------------------------------|-----------------------|
| A Microsoft Office Web Add-in can be scaffolded by using a Yeoman generator.                | <input checked="" type="radio"/> | <input type="radio"/> |
| Microsoft Office Web Add-ins can be developed by using C#.                                  | <input checked="" type="radio"/> | <input type="radio"/> |
| The code for a Microsoft Office Web Add-in has access to the local file system of a device. | <input checked="" type="radio"/> | <input type="radio"/> |

NEW QUESTION 72

- (Exam Topic 2)

Note: This question is part of a series of questions that present the same scenario. Each question in the series contains a unique solution that might meet the stated goals. Some question sets have more than one correct solution, while others might not have a correct solution.

After you answer a question in this section, you will NOT be able to return to it. As a result, these questions will not appear in the review screen.

You are developing a new application named App1 that uses the Microsoft identity platform to authenticate to Azure Active Directory (Azure AD).

Currently, App1 can read user profile information. You need to allow App1 to read the user's calendar.

Solution: Add `https://graph.windows.net/user.read` to the list of scopes during the initial login request. Does this meet the goal?

- A. Yes
- B. No

Answer: B

Explanation:

Microsoft Graph Calendars.Read allows the app to read events in user calendars.

For your app to access data in Microsoft Graph, the user or administrator must grant it the correct permissions via a consent process.

Application permissions are used by apps that run without a signed-in user present; for example, apps that run as background services or daemons. Application permissions can only be consented by an administrator.

References: <https://docs.microsoft.com/en-us/azure/active-directory/develop/v2-permissions-and-consent> <https://docs.microsoft.com/en-us/graph/permissions-reference>

NEW QUESTION 77

- (Exam Topic 2)

You are building a Microsoft Teams application.

For each of the following statements, select Yes if the statement is true. Otherwise, select No.  
NOTE: Each correct selection is worth one point.

| Statements   | Yes                   | No                    |
|--|-----------------------|-----------------------|
| An outgoing webhook can reply to messages by using an adaptive card. | <input type="radio"/> | <input type="radio"/> |
| An outgoing webhook can post in Teams channels proactively.          | <input type="radio"/> | <input type="radio"/> |
| An outgoing webhook requires a callback URL.                         | <input type="radio"/> | <input type="radio"/> |

- A. Mastered
- B. Not Mastered

Answer: A

Explanation:

Box 1: Yes

Once an outgoing webhook is added to a team, it acts like bot, listening in channels for messages using @mention, sending notifications to external web services, and responding with rich messages that can include cards and images.

Box 2: Yes

Webhooks are a great way for Teams to integrate with external apps. A webhook is essentially a POST request sent to a callback URL. In Teams, outgoing webhooks provide a simple way to allow users to send messages to your web service without having to go through the full process of creating bots via the Microsoft Bot Framework. Outgoing webhooks post data from Teams to any chosen service capable of accepting a JSON payload.

Box 3: Yes

Create an outgoing webhook

- > Select the appropriate team and select Manage team from the (•••) drop-down menu.
- > Choose the Apps tab from the navigation bar.
- > From the window's lower right corner select Create an outgoing webhook.
- > In the resulting popup window complete the required fields:
- > Name - The webhook title and @mention tap.
- > Callback URL - The HTTPS endpoint that accepts JSON payloads and will receive POST requests from Teams.

Reference:

<https://docs.microsoft.com/en-us/microsoftteams/platform/webhooks-and-connectors/how-to/add-outgoing-web>

NEW QUESTION 79

- (Exam Topic 2)

You plan to integrate a web-based support ticketing system and Microsoft Teams.

You need to recommend a solution that will prompt users for specific information before a ticket is created. The solution must minimize development effort. What should you include in the recommendation?

- A. outgoing webhooks
- B. incoming webhooks
- C. a notification-only bot
- D. a conversational bot

Answer: A

Explanation:

Webhooks are a great way for Teams to integrate with external apps. A webhook is essentially a POST request sent to a callback URL. In Teams, outgoing webhooks provide a simple way to allow users to send messages to your web service without having to go through the full process of creating bots via the Microsoft Bot Framework. Outgoing webhooks post data from Teams to any chosen service capable of accepting a JSON payload. Once an outgoing webhook is added to a team, it acts like bot, listening in channels for messages using @mention, sending notifications to external web services, and responding with rich messages that can include cards and images.

Reference:

<https://docs.microsoft.com/en-us/microsoftteams/platform/webhooks-and-connectors/how-to/add-outgoing-web>

NEW QUESTION 80

- (Exam Topic 2)

You have a single-page application (SPA) named TodoListSPA and a server-based web app named TodoListService.

The permissions for the TodoList SPA API are configured as shown in the TodoList SPA exhibit. (Click the TodoListSPA tab.)

| API/PERMISSIONS NAME                | TYPE      | DESCRIPTION                          | ADMIN CONSENT REQUIRED |
|-------------------------------------|-----------|--------------------------------------|------------------------|
| ▼ TodoListService-OBO-sample-v2 (1) |           |                                      |                        |
| user_impersonation                  | Delegated | Access TodoListService-OBO-sample-v2 |                        |

The permissions for the TodoListService API are configured as shown in the TodoListService exhibit. (Click the TodoListService tab.)

| API/PERMISSIONS NAME | TYPE      | DESCRIPTION                   |
|----------------------|-----------|-------------------------------|
| Microsoft Graph (1)  |           |                               |
| UserRead             | Delegated | Sign in and read user profile |

You need to ensure that TodoListService can access a Microsoft OneDrive file of the signed-in user. The solution must use the principle of least privilege. Which permission should to grant?

- A. the Sites.Read.All delegated permission for TodoListService
- B. the Sites.Read.All delegated permission for TodoListSpa
- C. the Sites.Read.All application permission for TodoListSPA
- D. the Sites.Read.All application permission for TodoListService

Answer: A

Explanation:

A client application gains access to a resource server by declaring permission requests. Two types are available: "Delegated" permissions, which specify scope-based access using delegated authorization from the signed-in resource owner, are presented to the resource at run-time as "scp" claims in the client's access token. "Application" permissions, which specify role-based access using the client application's credentials/identity, are presented to the resource at run-time as "roles" claims in the client's access token. Reference: <https://docs.microsoft.com/en-us/azure/active-directory/develop/developer-glossary#permissions>

NEW QUESTION 84

- (Exam Topic 2)  
You are evaluating the SharePoint Framework (SPFx) ListView Command Set extension. For each of the following statements, select Yes if the statement is true. Otherwise, select No. NOTE: Each correct selection is worth one point.

| Statements   | Yes                   | No                    |
|--|-----------------------|-----------------------|
| The ListView Command Set extension is a client-side component that runs inside the context of a Microsoft SharePoint page. | <input type="radio"/> | <input type="radio"/> |
| You can create custom toolbar buttons in lists and libraries by using the ListView Command Set extension.                  | <input type="radio"/> | <input type="radio"/> |
| You can create context menu items in lists and libraries by using the ListView Command Set extension.                      | <input type="radio"/> | <input type="radio"/> |

- A. Mastered
- B. Not Mastered

Answer: A

Explanation:

Box 1: Yes  
Extensions are client-side components that run inside the context of a SharePoint page. Box 2: Yes  
ClientSideExtension.ListViewCommandSet.CommandBar: The top command set menu in a list or library. Box 3: Yes  
ClientSideExtension.ListViewCommandSet.ContextMenu: The context menu of the item(s). Reference: <https://docs.microsoft.com/en-us/sharepoint/dev/spfx/extensions/get-started/building-simple-cmdset-with-dialog>

NEW QUESTION 85

- (Exam Topic 2)  
You need to retrieve a list of the last 10 files that the current user opened from Microsoft OneDrive. The response must contain only the file ID and the file name. Which URI should you use to retrieve the results? To answer, select the appropriate options in the answer area. NOTE: Each correct selection is worth one point.

https://graph.microsoft.com/v1.0/me/drive /

children

files

recent

root

?

\$expand=id,name

\$select=id,name

\$filter=id,name

&\$top=10

- A. Mastered
- B. Not Mastered

**Answer:** A

**Explanation:**

"graph.microsoft.com" "drive" onedrive Box 1: root

/root - The root folder for the drive. Box 2: \$select=id,name

To specify a different set of properties to return than the default set provided by the Graph, use the \$select query option. The \$select option allows for choosing a subset or superset of the default set returned. For example, when retrieving your messages, you might want to select that only the from and subject properties of messages are returned.

References: <https://docs.microsoft.com/en-us/onedrive/developer/rest-api/concepts/addressing-driveitems> [https://developer.microsoft.com/en-us/graph/docs/overview/query\\_parameters](https://developer.microsoft.com/en-us/graph/docs/overview/query_parameters)

**NEW QUESTION 87**

.....



## Thank You for Trying Our Product

### We offer two products:

1st - We have Practice Tests Software with Actual Exam Questions

2nd - Questions and Answers in PDF Format

### MS-600 Practice Exam Features:

- \* MS-600 Questions and Answers Updated Frequently
- \* MS-600 Practice Questions Verified by Expert Senior Certified Staff
- \* MS-600 Most Realistic Questions that Guarantee you a Pass on Your FirstTry
- \* MS-600 Practice Test Questions in Multiple Choice Formats and Updatesfor 1 Year

**100% Actual & Verified — Instant Download, Please Click**  
**[Order The MS-600 Practice Test Here](#)**